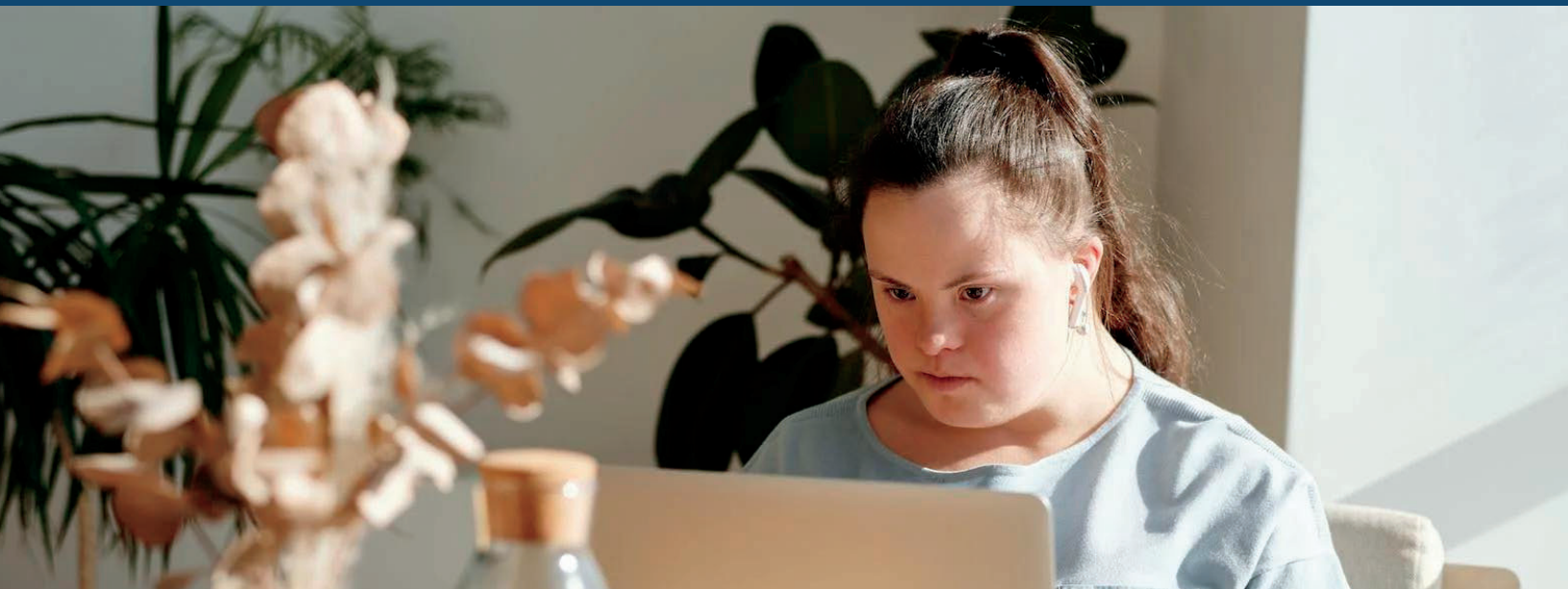


December 2022 Newsletter



Holiday Q&A

"My favorite part of the Holiday season is putting up the Christmas tree. Decorating it with lights and ornaments we have collected from our travels!" **-Silvia**

"A take-out Chinese food dinner on Christmas Eve, served at a festively-decorated table. This has been our family tradition for over 30 years!" **-Janet**

"My favorite part of the holiday season is experiencing it through my children's eyes! They are so excited to decorate the tree, see decorations around our community and sing holiday songs." **-Jackie**

"My favorite part of the holiday season is getting to spend extra time with family and friends while enjoying meals and fellowship." **-Jon**

"I really enjoy all of the Christmas decorations that get put up. Christmas trees, wreaths, and of course, the big inflatable Santa Claus in the front yard." **-Sam**

Food for Thought

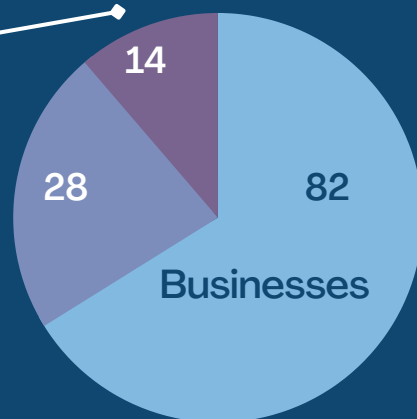
In October, we kicked off our Food For Thought: Lunch-Time Information Sessions. These are short webinars every third Wednesday of the month where we will cover a topic relating to the ESA Program. Last month, we covered the ESA Website and other online resources. This month, we will be covering our Parent and Provider Handbooks. Click the YouTube button below or scan the QR code to visit our YouTube channel to access the recordings of our previous sessions!



Provider Breakdown

Qualified Schools

Individuals



Employee Highlight

Sam joined the ESA Team in May and has recently taken on the role of External Communications Coordinator!



"I love coming to work and getting to help people - whether that be families or providers. This job is awesome because I can make a difference while learning something new everyday. Go ESA!" **-Sam**