

Attachment I: Top 5 Longest Distance Polling Location Changes with Satellite View

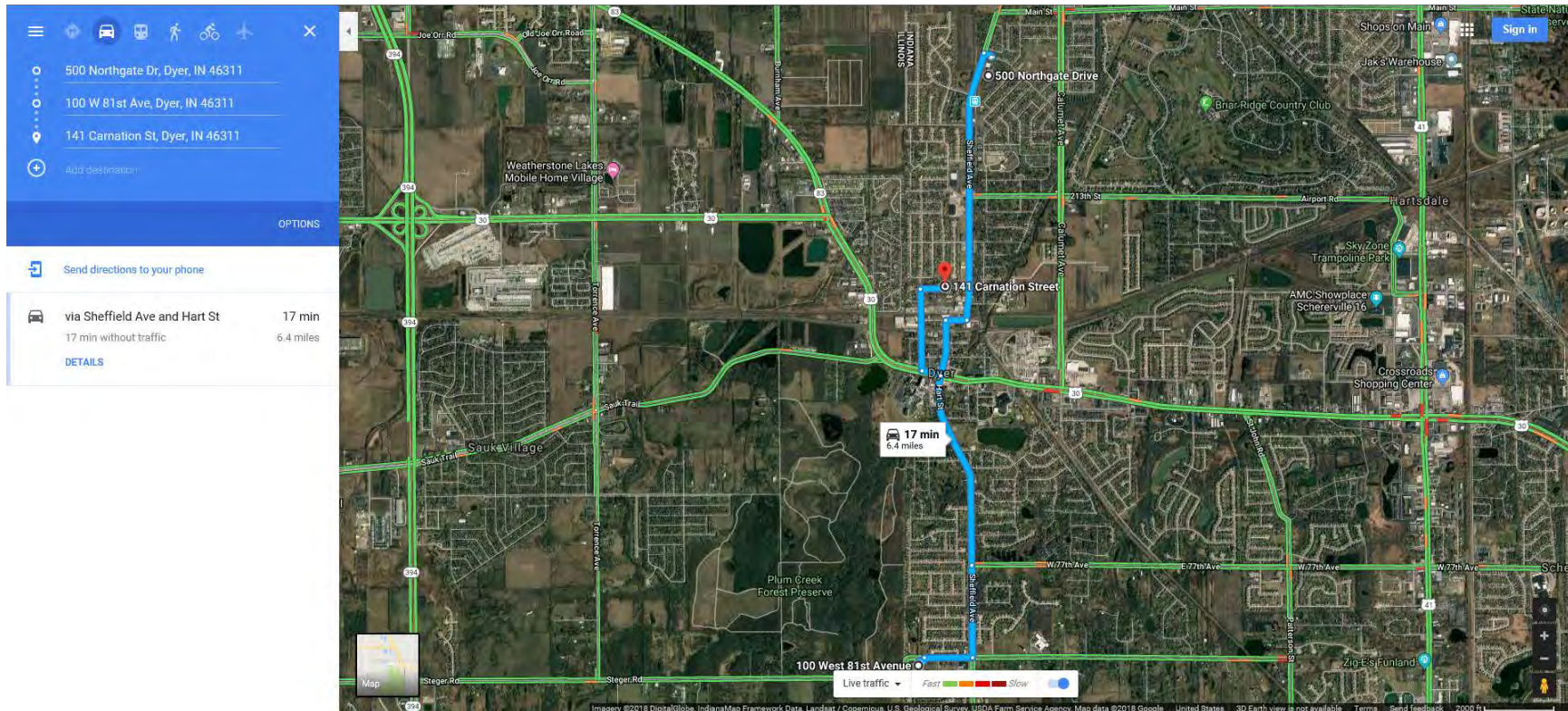
1. D-11 merged with D-15

Future Polling Location: 500 Northgate Dr, Dyer, IN 46311

Previous Polling Location: FAITH REFORMED CHURCH, 100 W 81st Ave, Dyer, IN 46311

New Mean Center Population Point: 41.5010635850309,-87.5213198464634

Observation: This is the largest difference in a polling location change (3.8 mi) in the Lake County precinct consolidation report. As a result of the precinct consolidation, the new mean center is 1.1 mi closer to the new polling location.



Attachment I: Top 5 Longest Distance Polling Location Changes with Satellite View

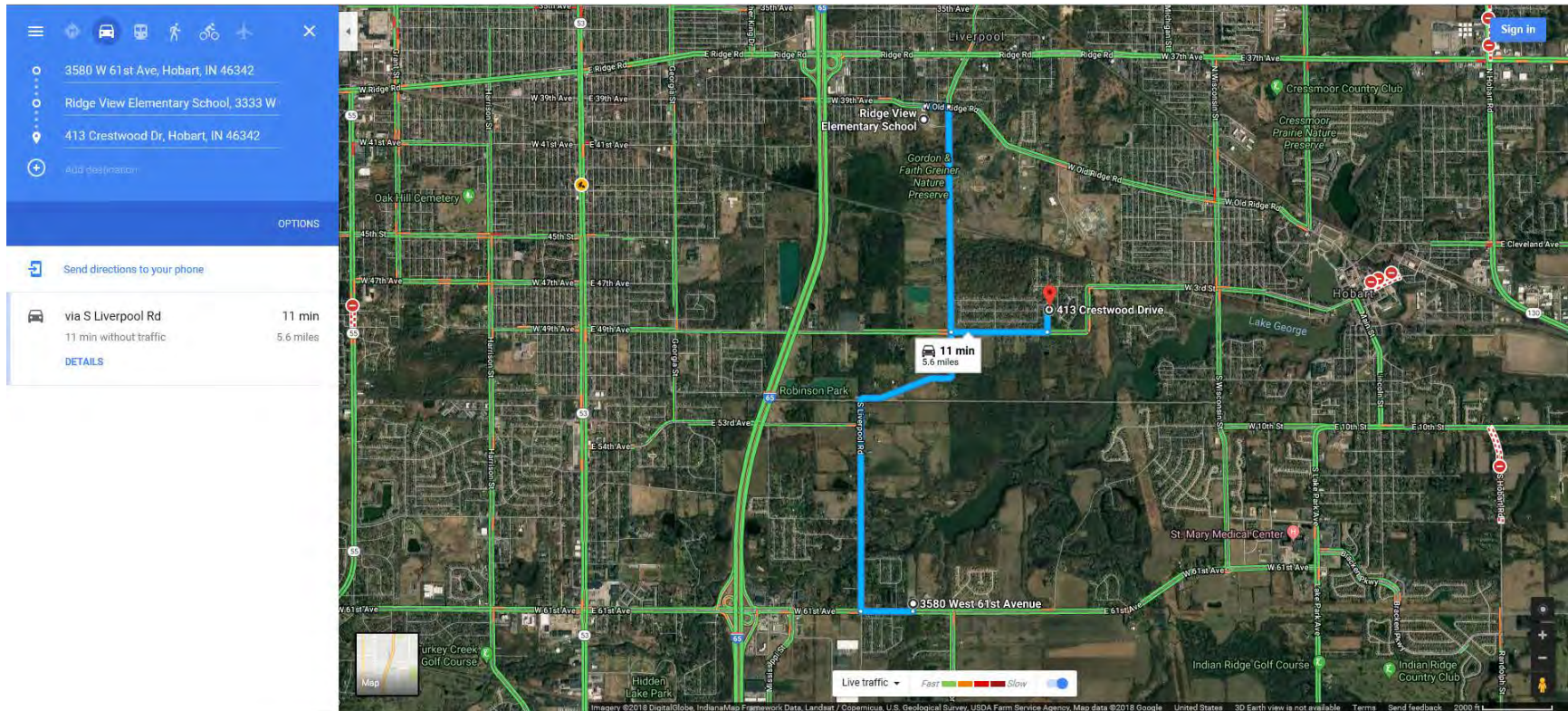
2. HO-22 merged with HO-17

Future Polling Location: 3580 W 61st Ave, Hobart, IN 46342

Previous Polling Location: Ridge View Elementary School 3333 W Old Ridge Rd, Hobart, IN 46342

New Mean Center Population Point: 41.53095542,-87.28671973

Observation: The new polling location is .8 mi further from the mean center than the HO-17 consolidated polling location, but is central in relation to the prior polling location and the new polling location. The new polling location is on the other side of park land, including Gordon & Faith Greiner Nature Preserve, Bur Oak Woods, Robinson Park, Hobart Woodland Trail, Glenwood Park, and Brookview Park.



Attachment I: Top 5 Longest Distance Polling Location Changes with Satellite View

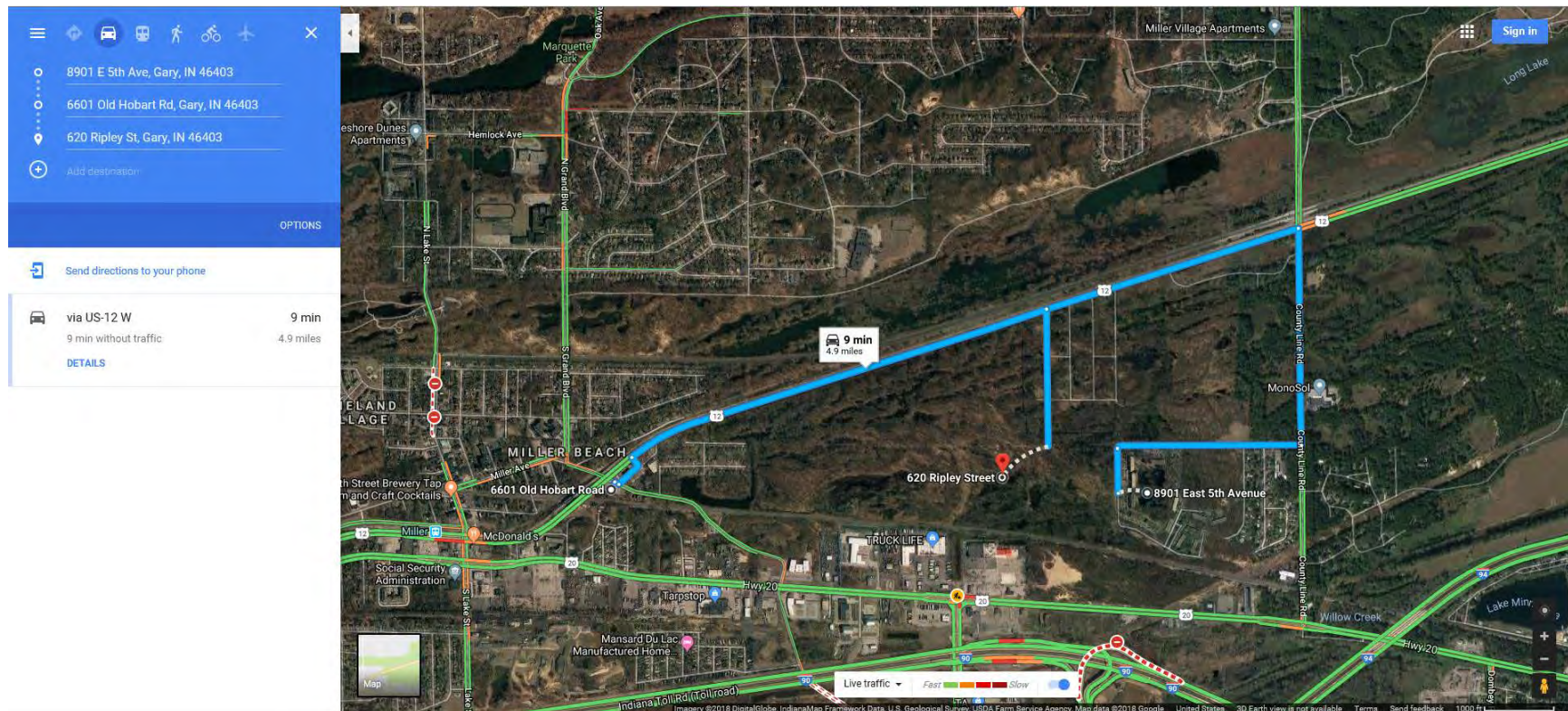
3. G1-03 merged with G1-06

Future Polling Location: 8901 E 5th Ave, Gary, IN 46403

Previous Polling Location: MILLER DUNES POST #279, 6601 Hobart Rd, Gary, IN 46403

New Mean Center Population Point: 41.5999845114639,-87.2381393128877

Observation: The new polling location is .6mi closer to the mean center than the G1 -06 consolidated polling location and is central in relation to the prior polling location and the new polling location. The new polling location is on the other side of park land John Merle Coulter Nature Preserve and the Indiana Dunes.



Attachment I: Top 5 Longest Distance Polling Location Changes with Satellite View

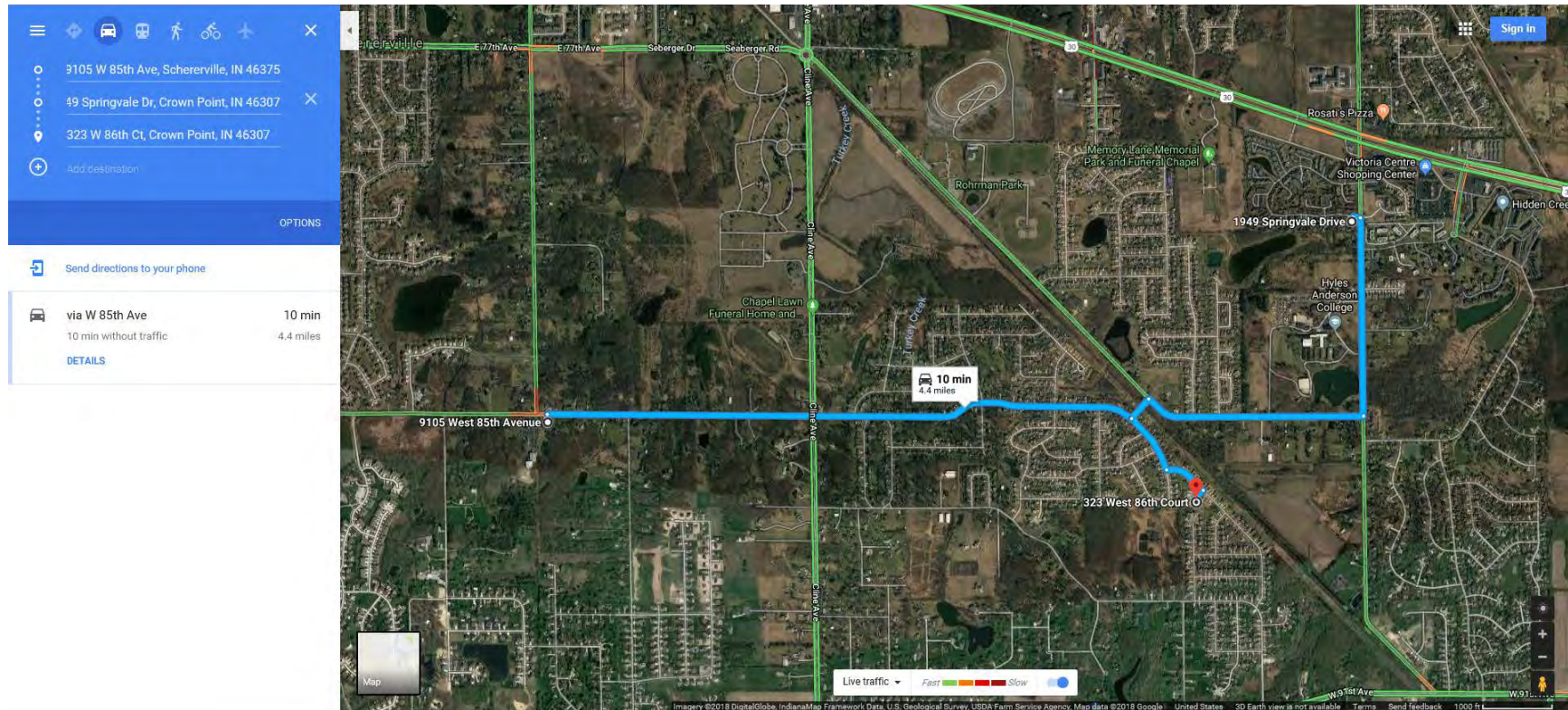
4. SJT-08 merged with SJT-06

Future Polling Location: 9105 W 85th Ave, Schererville, IN 46375

Previous Polling Location: SCHERERVILLE FIRE STATION# 3, 1949 Springvale Dr, Crown Point, IN 46307

New Mean Center Population Point: 41.46084345,-87.41145339

Observation: The new polling location is .3 mi further from the mean center than the SJT-06 consolidated polling location, but is central in relation to the prior polling location and the new polling location.



Attachment I: Top 5 Longest Distance Polling Location Changes with Satellite View

5. G4-22 merged with G4-19 and G4-20

Future Polling Location: 2367 E 21st Ave, Gary, IN 46407

Previous Polling Location (G4-19): IRONWOOD PARK, 1119 W 24th Ave, Gary, IN 46407

Previous Polling Location (G4-20): DORIE MILLER OFFICE, 1722 E 21st Ave, Gary, IN 46407

New Mean Center Population Point: 41.5793656393382,-87.3110688387414

Observation: The new polling location is closer to the mean center population (.2 mi) and only .04 mi from the G4-20 polling location.

