

# Arlington Community High School

## Benchmark Report: March 15, 2013

	Total	7 <sup>th</sup>	8 <sup>th</sup>	9 <sup>th</sup>	10 <sup>th</sup>	11 <sup>th</sup>	12 <sup>th</sup>
Enrollment, disaggregated by grade as of March 15 <sup>th</sup>	<b>478</b>	<b>102</b>	<b>113</b>	<b>87</b>	<b>74</b>	<b>64</b>	<b>38</b>
% of EL students by grade	<b>1.5%</b>	<b>2.0%</b>	<b>.09%</b>	<b>2.4%</b>	<b>1.3%</b>	<b>0%</b>	<b>3.7%</b>
% of students with an IEP or 504 plan by grade	<b>21.2%</b>	<b>28.3%</b>	<b>21.5%</b>	<b>18.4%</b>	<b>22.3%</b>	<b>23.3%</b>	<b>27.2%</b>
# of suspensions, disaggregating by in-school and out-of-school suspensions (February 1 <sup>st</sup> – March 1 <sup>st</sup> )	In-school (IS): Out-of-school (OSS): <b>328</b>	IS: OSS: <b>111</b>	IS: OSS: <b>87</b>	IS: OSS: <b>111</b>	IS: OSS: <b>14</b>	IS: OSS: <b>3</b>	IS: OSS: <b>2</b>
# of expulsions (February 1 <sup>st</sup> – March 1 <sup>st</sup> )	<b>5</b>	<b>0</b>	<b>1</b>	<b>0</b>	<b>1</b>	<b>2</b>	<b>1</b>
# of drop-outs (February 1 <sup>st</sup> – March 1 <sup>st</sup> )	<b>2</b>	<b>0</b>	<b>0</b>	<b>0</b>	<b>0</b>	<b>0</b>	<b>2</b>
Student Information System Audit ( <i>door to door follow up</i> )	<b>13</b>	<b>4</b>	<b>2</b>	<b>5</b>	<b>1</b>	<b>0</b>	<b>3</b>
Student attendance rate (February 1 <sup>st</sup> – March 1 <sup>st</sup> )	<b>88%</b>						
Faculty/staff attendance rate (February 1 <sup>st</sup> – March 1 <sup>st</sup> )	<b>Approximately 90%</b>						
# and description of new hires, staff leaving/terminated	<p><b>New Hires: 2</b> (Title I Reading Specialist, 1 Paraprofessional)</p> <p><b>Left or Terminated: 2</b> SPED Teachers</p>						
Community engagement report (e.g., number and type of events, attendance, future plans)	<p><b>Highlights:</b></p> <p>High School Varsity Boys Basketball team played in the Sectional Championship Game on Monday, March 4<sup>th</sup>.</p> <p>Arlington Robotics Club successfully competed in a Robotics competition at Purdue University and won a Rookie All-Star award</p> <p><b>February 2013 Programming</b></p> <p><b>Community Partner:</b> Abbott Farms</p> <p><b>Programming:</b> Abbott Farms of Oxford, MI adopted Arlington's JAG scholars for the month of February. Farmer Abbott sent a brief letter of encouragement to each scholar and provided a token of appreciation to each scholar for his or her assistance in assembling the Forest Manor room.</p> <p><b>Scholars Served: 20</b></p> <p><b>Community Engagement:</b> Arlington Scholars visit Notre Dame</p> <p>Programming: On Thursday, February 21st, 2013 (19) 9<sup>th</sup>-11<sup>th</sup> grade scholar's visited University of Notre Dame to learn more about the</p>						

campus, college life, and the importance of preparing themselves academically.

**Community Partner:** Gilchrist & Soames

**Programming:** Gilchrist & Soames, a distributor of hygiene products for major hotel chains such as the Hyatt will provide on an as needed basis personal items for Arlington scholars and families. Items consist of body wash, shampoo, conditioner, and lotion. These items will be distributed to scholars and families (as needed) via the Forest Manor room, school Social Worker, and PE teacher.

**Community Partner:** Forest Manor Job Readiness Workshops

**Programming:** Forest Manor is set to offer a series of job-readiness workshops at Arlington in the Forest Manor room during afterschool hours. The sign up for this series of workshops will be held during lunch hours the week of 2/25-3/1. The workshops are set to run weekly starting Tuesday 3/4 at 4:15pm.

**Stepping UP to Success Workshop Segments**

**Week 1: Step One: Getting to know yourself (values, characteristics, and skills assessments)**

**Week 2: Step Two: Finding your job (application completion, ways to job search)**

**Week 3: Step Three: Selling yourself (resumes and interviews)**

**Week 4: Step Four: Being your best self (what employers expect and value)**

**Week 5: Step Five: Sharing yourself (Presentation by Trusted Mentors and graduation)**

**Community Partner:** College Goal Sunday

**Programming:** Arlington is scheduled to host College Goal Sunday on Sunday February 24, 2013; 2-4pm. The purpose of College Goal Sunday is to assist local families with filling out the FAFSA and to provide information regarding the financial aid process. 100-200 local families have been projected to attend this event.

### **March 2013 Programming**

**Community Partner:** Forest Manor Multi-Service Center

**Website:** <http://www.fmmsc.org>

**Point Person(s):** Regina Marsh, Finda Fallah, Meg Jones, Andrea Hudson

**About:** Forest Manor Multi-Service Center (FMMSC) is a community based social service organization located on the near eastside of Indianapolis, which began extensive, outreach programs to youth and adults in 1980.

**Programming:** Forest Manor launched its first Job Readiness workshop series at Arlington High School. The workshop series entitled *Steppin' Up To Success* teaches students to be introspective, find and apply for jobs, market themselves wisely, and managing their finances wisely.

**Community Partner:** Indianapolis Latino Institute

**Website:** <http://www.indianalatinoinstitute.com>

**Point Person(s):** Danielle

**About:** The Indiana Latino Institute, Inc. provides advocacy, leadership and collaboration addressing evolving issues and essential needs that affect Latino communities. The Indiana Latino Institute, Inc. is the leader in the Latino community in Indiana for advocacy, resource and referral, research and community assessment and model program development for Latino adults and youth.

**Programming:** The Indianapolis Latino Institute spoke with Arlington students in regards Job Readiness and securing employment and internships for summer 2013. This was done Monday, March 11<sup>th</sup> thru 13<sup>th</sup>.

**Community Partner:** JAG (Jobs for America's Graduates) Arlington Chapter

**Website:** <http://jag.org>

**Point Person(s):** Tremayne Hore

**About:** Jobs for America's Graduates (JAG) is a state-based national non-profit organization dedicated to preventing dropouts among young people who are most at-risk

**Programming:** The JAG Arlington Chapter developed a field day for Arlington middle school students who were targeted for extended school day scheduling. Because these middle school students demonstrated significant academic progress, they were challenged to work together to play and win academically enhanced versions of basketball, volleyball, soccer, and baseball on Friday, March 8<sup>th</sup>.

On March 12th the JAG Arlington Chapter competed against other local

high school JAG chapters in the Career Development Competition. Arlington JAG students competed in the areas of Financial Literacy, Critical Thinking, Interviewing Skills, Writing Skills, and Presentation Skills.

**Community Partner:** Indianapolis Urban League: *I Need You To Listen, Hear and Understand Me tour* (INYLHUM)

**Website:** <http://www.indplsul.org>

**Point Person:** Diedre Colman

**About:** The Indianapolis Urban League was founded in the fall of 1965 as a non-profit, non-partisan, interracial community-based social service/civil rights organization. **Programming:** This tour focuses on teaching youth in the age range of 13-18 about bullying, STDs, and sexual safety. This is being done on Friday, March 15<sup>th</sup>.

**Community Partner:** Indianapolis Rotary Club

**Website:** <http://www.indyrotary.org>

**Point Person:** Pam Gatson

**About:** Rotary is an organization of business and professional leaders united worldwide, who provide humanitarian service, encourage high ethical standards in all vocations, and help build goodwill and peace in the world.

**Programming:** The Indianapolis Rotary Club selected one outstanding graduating senior from Arlington High School to represent Arlington during their 2013 luncheon.

**Community Partner:** St. Vincent Mici-AHEC

**Website:** [mici-ahec.stvincent.org/](http://mici-ahec.stvincent.org/)

**Point Person(s):** Erica Young, David McGuire

**About:** The mission of the Metropolitan Indianapolis–Central Indiana Area Health Education Center (MICI-AHEC) is to enhance the quality of and access to health care, to improve health care outcomes, and to address the health workforce needs of medically underserved communities and populations by establishing partnerships between the institutions that train health professionals and the communities that need them most.

**Programming:** St. Vincent Mici-AHEC presented to students about their upcoming Saturday Life Opportunity Conference. This is ongoing throughout the month of March

**Community Partner:** Arlington High School Alumni Class of 1986

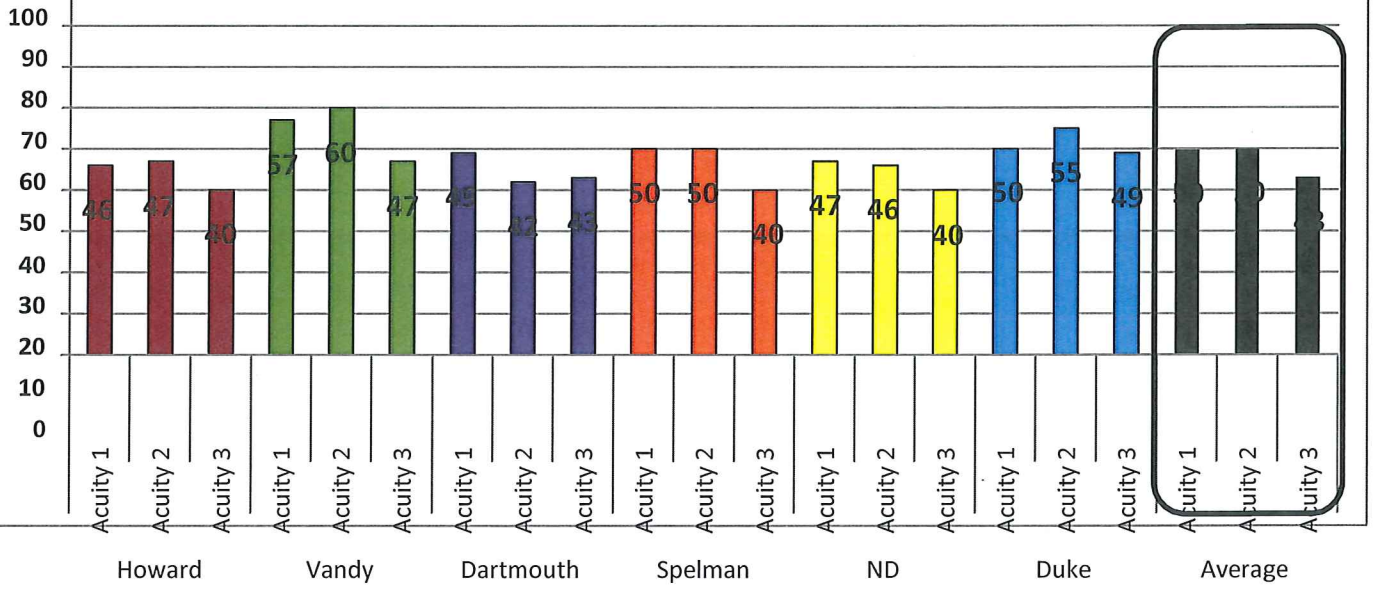
**Point Person(s):** Kim Sarver

**Programming:** On March 15th the Arlington High School Alumni Class of 1986 donated 3 bags of belts in various sizes to be distributed to Arlington students who currently do not have a belt to wear with their uniform.

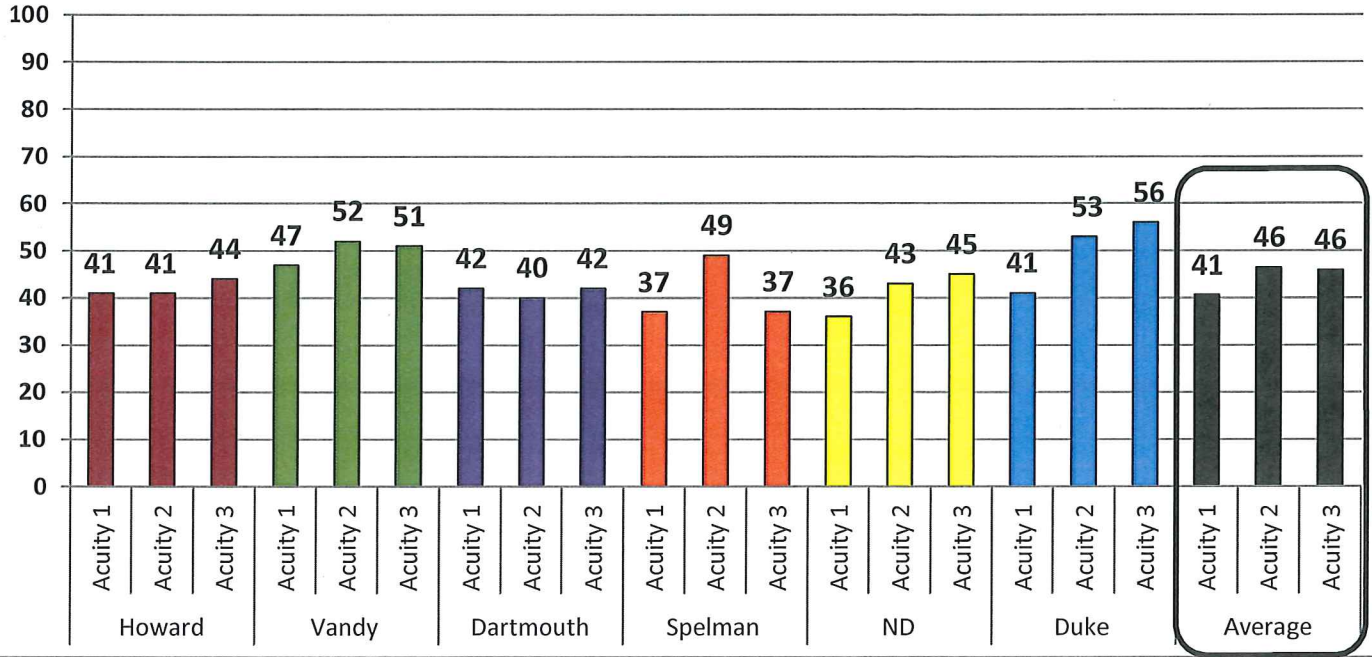
# Arlington Acuity Data



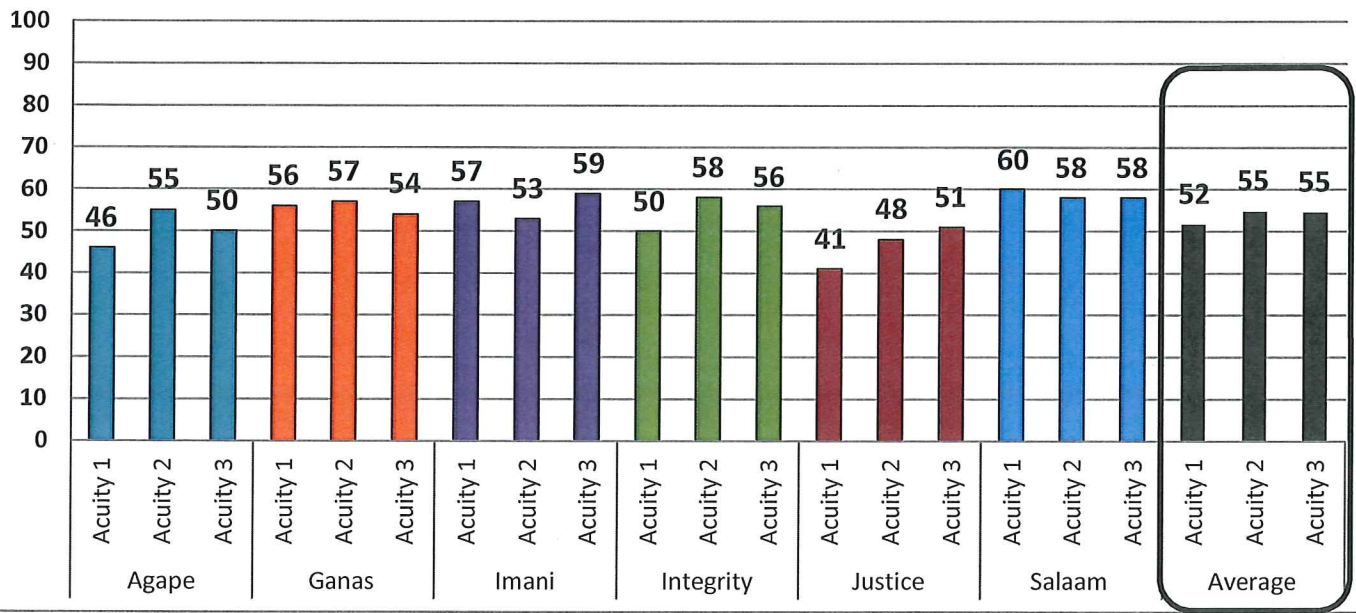
## 7th Grade Acuity Reading Scores



# 7th Grade Acuity Math Scores

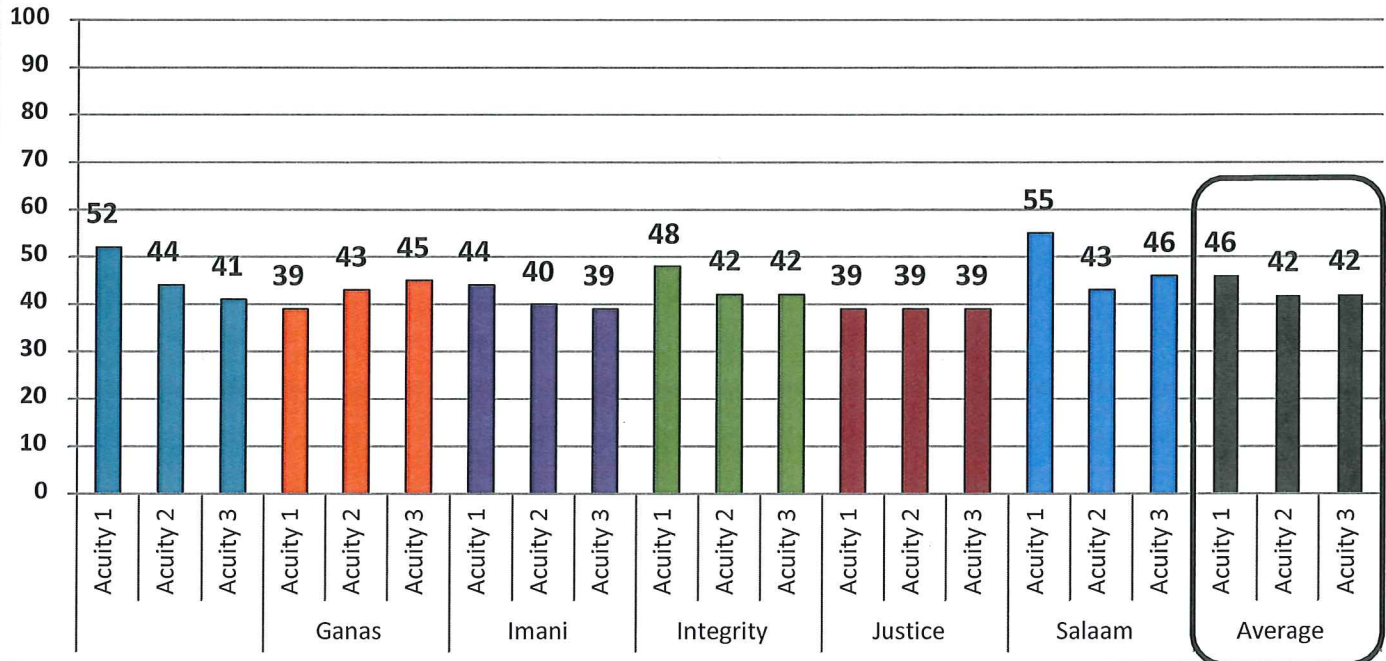


# 8th Grade Acuity Reading Scores

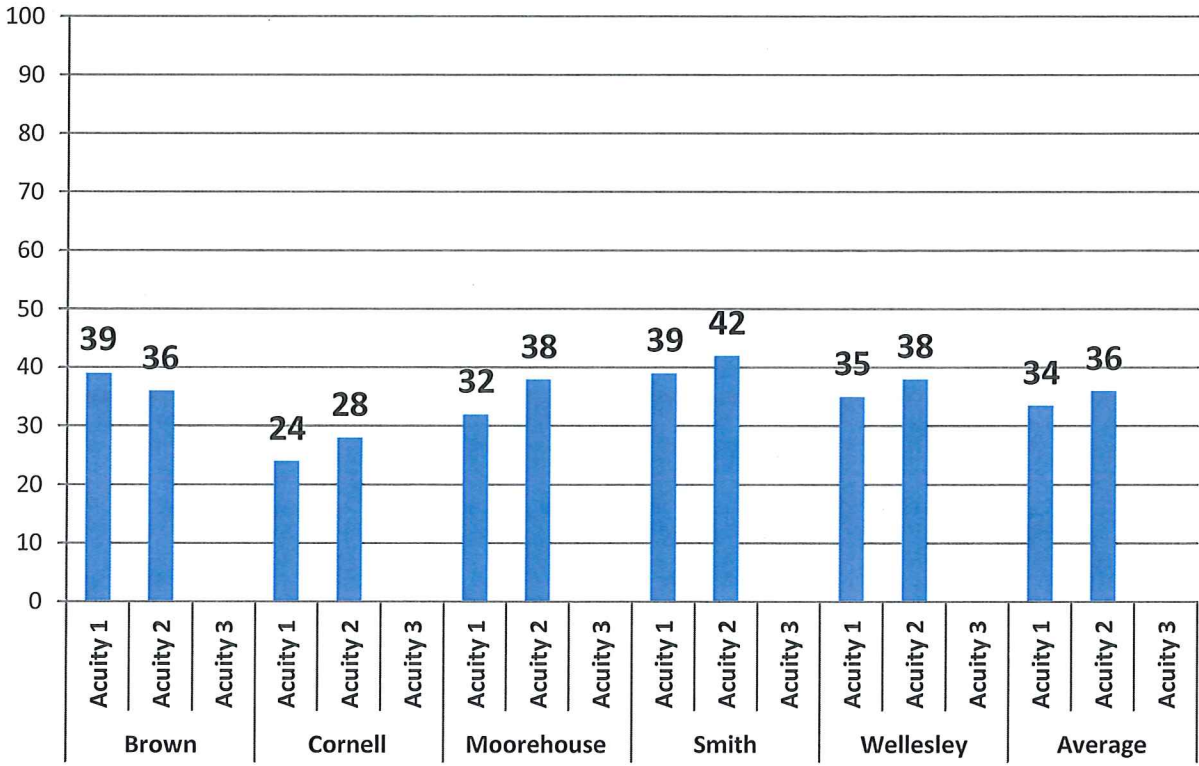




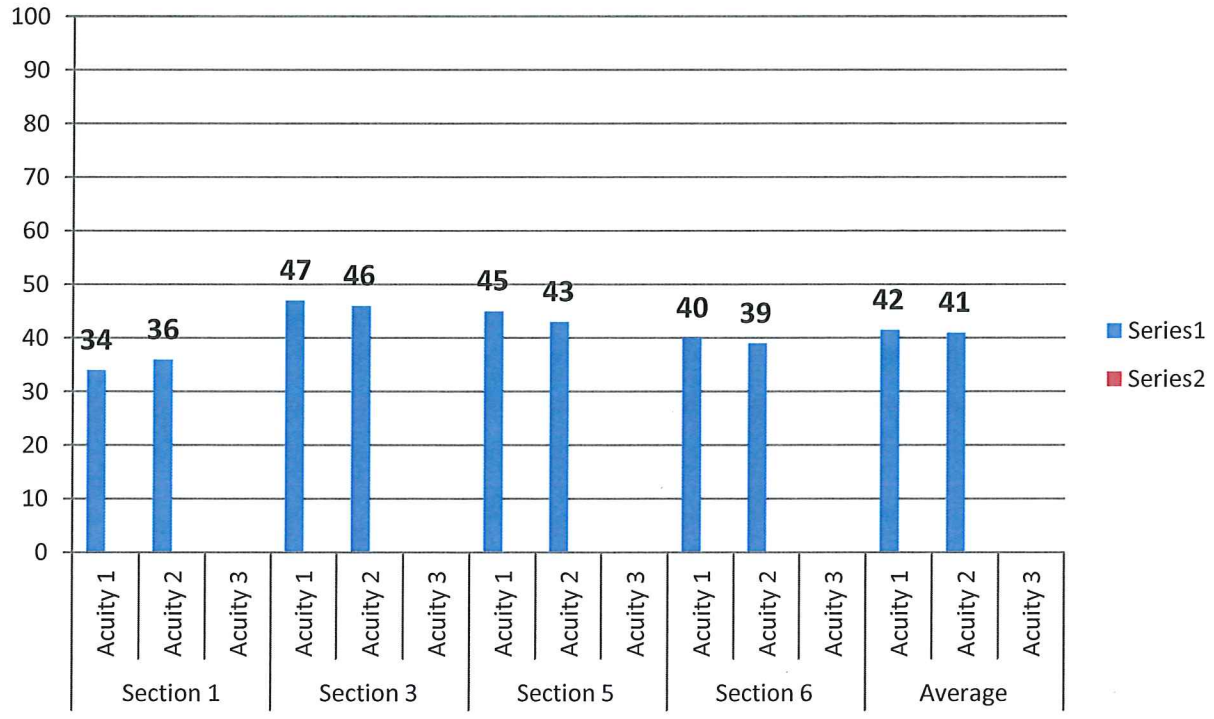
# 8th Grade Acuity Math Scores



# Algebra I Acuity Averages

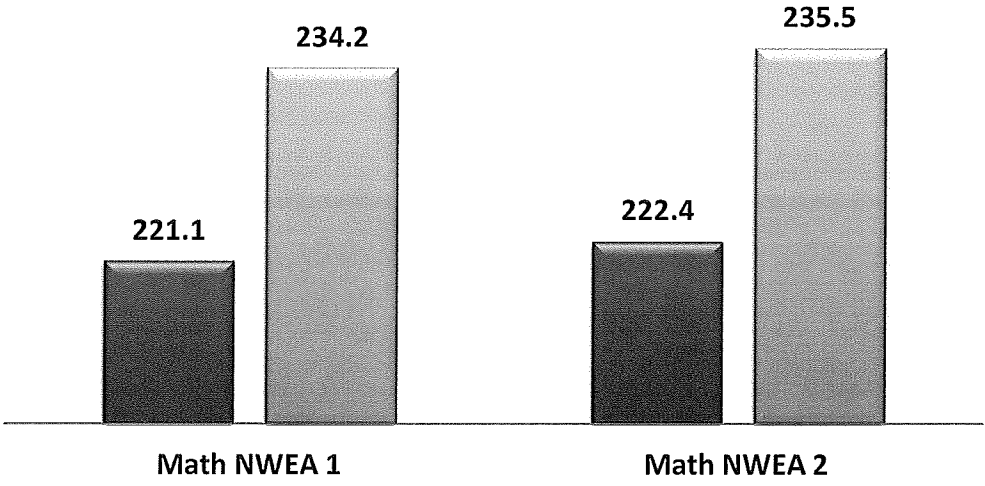


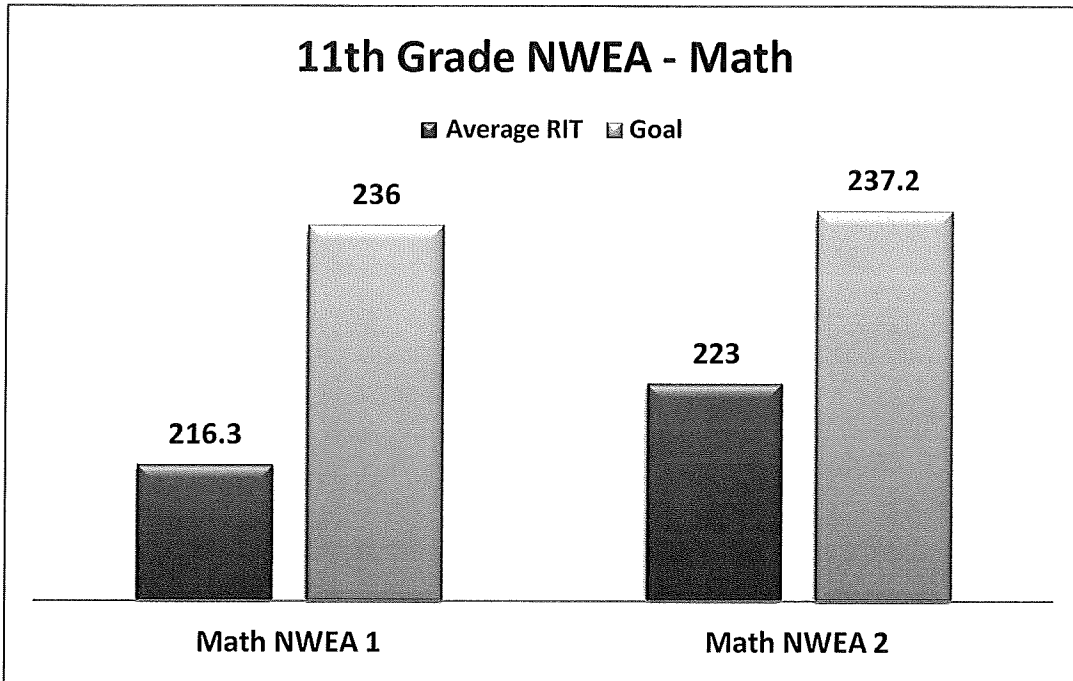
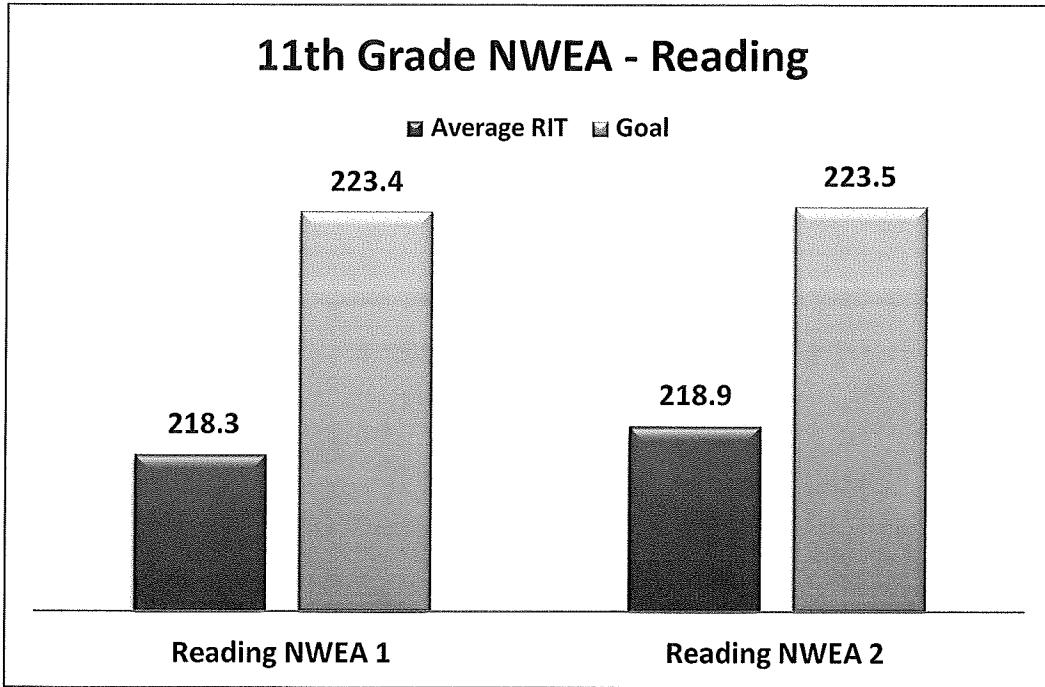
# English 10 Acuity Averages



# 10th Grade NWEA - Math

■ Average RIT   ■ Goal





## 12th Grade NWEA - Reading

Average RIT

Goal

223.7

223.7

217.8

221.8

Reading NWEA 1

Reading NWEA 2

## 12th Grade NWEA - Math

Average RIT

Goal

238.3

238.3

216.4

226.2

Math NWEA 1

Math NWEA 2

# Emma Donnan Middle School

## Benchmark Report: March 13, 2013

	Total	7 <sup>th</sup>	8 <sup>th</sup>
Enrollment, disaggregated by grade as of March 13 <sup>th</sup>	<b>365</b>	<b>165</b>	<b>200</b>
% of EL students by grade	<b>20/5.5%</b>	<b>4/2.4%</b>	<b>16/8%</b>
% of students with an IEP or 504 plan by grade	<b>IEP 90 – 24.7 % 504-2</b>	<b>IEP 35 – 21.2 % 504-2</b>	<b>IEP 55 – 27.5 % 504-0</b>
# of suspensions, disaggregating by in-school and out-of-school suspensions (February 1 <sup>st</sup> - March 13 <sup>th</sup> )	In-school (IS): n/a Out-of-school (OSS): <b>107</b>	IS: n/a OSS: <b>40</b>	IS: n/a OSS: <b>67</b>
# of expulsions (Feb. 1 <sup>st</sup> – Mar. 13 <sup>th</sup> )	<b>4</b>	<b>1</b>	<b>3</b>
# of drop-outs	<b>0</b>	<b>0</b>	<b>0</b>
Student attendance rate March 13 <sup>th</sup> )	<b>82.9%</b>		
Faculty/staff attendance rate (March 13 <sup>th</sup> )	<b>97%</b>		
# and description of new hires, staff leaving/terminated	<b>Hired Business Manager</b>		
Community engagement report (e.g., number and type of events, attendance, future plans)	<p><b>Community Engagement:</b></p> <p>March 12<sup>th</sup> Parent University 8<sup>th</sup> Graduation Recruitments / 21<sup>st</sup> Century Scholars Program 6pm – 7pm Attendance- 7</p> <p><b>Future Events:</b></p> <p>March. 21th: Parent University – School Tool, SIS, Achieve 3000, 21<sup>st</sup> Century Scholars Program / 8<sup>th</sup> Graduation Recruitments 6pm -7pm</p> <p>March 21, Recruitment Fair –EDMS 4:30 – 7:00 pm</p>		

# Emmerich Manual High School

## Benchmark Report: March 14, 2013

	Total	9 <sup>th</sup>	10 <sup>th</sup>	11 <sup>th</sup>	12 <sup>th</sup>
Enrollment, disaggregated by grade as of March 14	<b>451</b>	<b>134</b>	<b>100</b>	<b>104</b>	<b>113</b>
% of EL students by grade	<b>46/10%</b>	<b>8/6%</b>	<b>12/12%</b>	<b>16/15%</b>	<b>10/9%</b>
% of students with an IEP or 504 plan by grade	<b>57/13%</b>	<b>9/7%</b>	<b>15/15%</b>	<b>17/16%</b>	<b>16/14%</b>
# of suspensions, disaggregating by in-school and out-of-school suspensions (February 20 <sup>th</sup> – March 14 <sup>th</sup> )	In-school (IS): 0 Out-of-school (OSS): 62	<b>IS: 0 OSS: 23</b>	<b>IS: 0 OSS: 14</b>	<b>IS: 0 OSS: 16</b>	<b>IS: 0 OSS: 9</b>
# of expulsions (February 20 <sup>th</sup> – March 14 <sup>th</sup> )	<b>0</b>	<b>0</b>	<b>0</b>	<b>0</b>	<b>0</b>
# of drop-outs (February 20 <sup>th</sup> – March 14 <sup>th</sup> )	15	<b>0</b>	<b>3</b>	<b>5</b>	<b>7</b>
Student attendance rate (Open-March 14th)	<b>77%</b>				
Faculty/staff attendance rate (Open-March 14th)	<b>94%</b>				
# and description of new hires, staff leaving/terminated	Reading Specialist to start April 15 <sup>th</sup> Campus Monitor to replace a vacancy starts March 18 <sup>th</sup>				
Community engagement report (e.g., number and type of events, attendance, future plans)	February 25 Enrollment Session Incoming 9th-10th Graders February 27 Enrollment Session Incoming 11th-12th Graders March 4 <sup>th</sup> FASFA Night (27 Parents in attendance) March 7 <sup>th</sup> FASFA Morning Session (14 parents in attendance) March 6 <sup>th</sup> Manual Military Recognition Night put on by JROTC (150 in attendance)				



# Thomas Carr Howe High School

## Benchmark Report: March 20, 2013

	Total	7 <sup>th</sup>	8 <sup>th</sup>	9 <sup>th</sup>	10 <sup>th</sup>	11 <sup>th</sup>	12 <sup>th</sup>
Enrollment, disaggregated by grade as of March 20, 2013	<b>671</b>	<b>126</b>	<b>172</b>	<b>121</b>	<b>107</b>	<b>75</b>	<b>70</b>
% of EL students by grade	<b>52 or 7.7%</b>	<b>15 or 11.9%</b>	<b>9 or 5.2%</b>	<b>6 or 4.9%</b>	<b>4 or 3.7%</b>	<b>5 or 6.6%</b>	<b>13 or 18.6%</b>
% of students with an IEP or 504 plan by grade	<b>123 17.9% IEP</b>	<b>15 11.9% IEP</b>	<b>36 20.8% IEP</b>	<b>29 23.9% IEP</b>	<b>17 15.8% IEP</b>	<b>12 16% IEP</b>	<b>14 20%  0-504 0%</b>
# of suspensions, disaggregating by in-school and out-of-school suspensions (Open March 20, 2013)	Total: 79 In-school (IS): 0 Out-of-school (OSS): 79	Total: 25 IS:0 OSS:25	Total: 26 IS:0 OSS:26	Total: 11 IS:0 OSS:11	Total:12 IS:0 OSS- 12	Total: 5 IS: 0 OSS:5	Total: 2 IS: 0 OSS:2
# of expulsions (Open- March 20, 2013)	<b>3</b>	<b>1</b>	<b>1</b>	<b>0</b>	<b>1</b>	<b>0</b>	<b>0</b>
# of drop-outs (Open- March 20, 2013)	<b>0</b>	<b>0</b>	<b>0</b>	<b>0</b>	<b>0</b>	<b>0</b>	<b>0</b>
Student attendance rate (Open-March 20, 2013)	<b>87.1%</b>						
Faculty/staff attendance rate (Open-March 20, 2013)	<b>97.4%</b>						
# and description of new hires, staff leaving/terminated	CRT						
Community engagement report (e.g., number and type of events, attendance, future plans)	<p><b>Events:</b> Habitat For Humanity, Mobile Dental Visit, Community CPR Training, College Visits, S.W.A.G. Saturday Butler Partnership, Young Champions Program, SAT ACT Prep with Power Plus, Rockwall Competition JROT Manual vs. Howe, Work with local military, Community East Hospital – purchased cameras, Interact Club, Partnership with Alum for Homecoming, Community Open House, Gleaners Food bank, Hat, Glove, and Sock Drive for local Hoosier Veterans, Amos Brown Visits, Colts Players Visit</p> <p><b>Upcoming:</b> Keep Indianapolis Beautiful Project, 5k Community Run, Community Garden Project, Family FASFA night,</p>						



Community engagement report  
(e.g., number and type of events, attendance, future plans)

- Number and Types of Events:
- State Student Council Representative Assembly – 4 attendees (2 students/2 staff)
  - Region V Title I Parent Conference – 2 attendees (1 parent/1 staff)
  - Parent Meeting (0 Parents/3 Administrators/1 Community Partner)

eValuate Reading Data

Scholastic Reading Inventory (READ180/System44)

Metric: E/LA High School eValuate  
45% Average Score on Sept. eValuate  
54% Average Score on Oct. eValuate  
49% Average Score on Nov. eValuate  
55% Average Score on Dec. eValuate  
48% Average Score on Jan. eValuate  
50% Average Score on Feb. eValuate

Metric: eValuate 7<sup>th</sup>-8<sup>th</sup> Grade Reading  
41% Average Score on Sept. eValuate  
40% Average Score on Oct. eValuate  
39% Average Score on Nov. eValuate  
49% Average Score on Dec. eValuate  
43% Average Score on Jan. eValuate  
45% Average Score on Feb. eValuate

Summary Report for Baseline SRI Screening:  
7<sup>th</sup> – 10<sup>th</sup> Grades Overall General Population

	1 <sup>st</sup> Screening	2 <sup>nd</sup> Screening
Below Basic	23%	21%
Basic	55%	49%
Proficient	18%	26%
Advanced	4%	5%

7<sup>th</sup> Grade SRI Proficiency Growth Report

	1 <sup>st</sup> Screening	2 <sup>nd</sup> Screening
Below Basic	33%	23%
Basic	38%	49%
Proficient	23%	26%
Advanced	5%	3%

8<sup>th</sup> Grade SRI Proficiency Growth Report

	1 <sup>st</sup> Screening	2 <sup>nd</sup> Screening
Below Basic	31%	24%
Basic	48%	38%
Proficient	17%	33%
Advanced	5%	5%

9<sup>th</sup> Grade SRI Proficiency Growth Report

	1 <sup>st</sup> Screening	2 <sup>nd</sup> Screening
Below Basic	28%	23%
Basic	63%	57%
Proficient	6%	17%
Advanced	3%	3%

10<sup>th</sup> Grade SRI Proficiency Growth Report

	1 <sup>st</sup> Screening	2 <sup>nd</sup> Screening
Below Basic	11%	13%
Basic	60%	47%
Proficient	28%	32%
Advanced	2%	9%

Metric: Alg I High School eValuate  
30% Average Score on Sept. eValuate  
39% Average Score on Oct. eValuate  
44% Average Score on Nov. eValuate  
34% Average Score on Dec. eValuate  
40% Average Score on Jan. eValuate  
48% Average Score on Feb. eValuate

Metric: eValuate 7<sup>th</sup> – 8<sup>th</sup> Grade Math  
32% Average Score on Sept. eValuate  
32% Average Score on Oct. eValuate  
31% Average Score on Nov. eValuate  
33% Average Score on Dec. eValuate  
34% Average Score on Jan. eValuate  
32% Average Score on Feb. eValuate

SRI Screening Update:  
1<sup>st</sup> Screening vs. 2<sup>nd</sup> Screening Growth Data for students currently enrolled in READ180 Classes. The final screening is scheduled for May, 2013.

7<sup>th</sup> Grade SRI Proficiency Growth Report

	1 <sup>st</sup> Screening	2 <sup>nd</sup> Screening
Below Basic	52%	29%
Basic	48%	57%
Proficient	0%	14%
Advanced	0%	0%

8<sup>th</sup> Grade SRI Proficiency Growth Report

	1 <sup>st</sup> Screening	2 <sup>nd</sup> Screening
Below Basic	43%	33%
Basic	57%	40%
Proficient	0%	27%
Advanced	0%	0%

9<sup>th</sup> Grade SRI Proficiency Growth Report

	1 <sup>st</sup> Screening	2 <sup>nd</sup> Screening
Below Basic	17%	8%
Basic	83%	83%
Proficient	0%	8%
Advanced	0%	0%

10<sup>th</sup> Grade SRI Proficiency Growth Report

	1 <sup>st</sup> Screening	2 <sup>nd</sup> Screening
Below Basic	25%	19%
Basic	69%	75%
Proficient	6%	6%
Advanced	0%	0%

SPI Screening Report: System 44  
Scholastic Phonics Inventory

Achieve3000

Updated Summary Report for Baseline Achieve Lexile Level Screening: Student progress towards 1300 Lexile goal for College and Career readiness

7<sup>th</sup>:  
 Far Below Grade Level– 57%  
 Approaches – 38%  
 Meets – 4%  
 Exceeds –21%

8<sup>th</sup>:  
 Far Below Grade Level– 50%  
 Approaches – 39%  
 Meets – 8%  
 Exceeds –3%

9<sup>th</sup>:  
 Far Below Grade Level– 60%  
 Approaches – 37%  
 Meets – 3%  
 Exceeds –0%

10<sup>th</sup>:  
 Far Below Grade Level– 63%  
 Approaches – 31%  
 Meets – 6%  
 Exceeds –0%

11<sup>th</sup>:  
 Far Below Grade Level– 76%  
 Approaches – 19%  
 Meets – 5%  
 Exceeds –0%

12<sup>th</sup>:  
 Far Below Grade Level– 48%  
 Approaches – 40%  
 Meets – 9%  
 Exceeds –2%

School Total  
 Far Below Grade Level– 59%  
 Below Grade Level – 34%  
 On Grade Level – 6%  
 Above Grade Level – 1%

October Math Acuity Data:

	7 <sup>th</sup> Grade	8 <sup>th</sup> Grade
Number Sense	44%	45%
Computation	30%	42%
Algebra & Functions	31%	50%
Measurement	31%	29%

	1 <sup>st</sup> Screening	2 <sup>nd</sup> Screening
Advancing Decoder	13%	13%
Developing Decoder	31%	44%
Pre- or Beginning Decoder	56%	44%

Achieve Lexile Level Set:  
 First round of screening took place at the end of the 1<sup>st</sup> semester, second round scheduled for spring 2013

October Reading Acuity Data:

	7 <sup>th</sup> Grade	8 <sup>th</sup> Grade
Word Recog. & Vocabulary	50%	39%
Comprehension	36%	49%
Analysis of Lit Terms	46%	42%

Problem Solving	26%	28%
-----------------	-----	-----

Writing Process	36%	50%
Writing Applications	24%	38%
Conventions	27%	37%

Baseline ECA data on current students

Seniors Fall Baseline Data

*Algebra I:*  
176 students  
82 Did not Pass  
71 Pass  
23 No Results  
40% Pass Rate

*English 10:*  
176 students  
76 Did not Pass  
68 Pass  
32 No Results  
39% Pass Rate

Juniors Fall Baseline Data

*Algebra I:*  
189 students  
101 Did not Pass  
55 Pass  
33 No Records  
29% Pass Rate

*English 10:*  
189 students  
85 Did not Pass  
37 Pass  
67 No Records  
20% Pass Rate

Sophomores Fall Baseline Data

Seniors 2012-2013 Dec. Assessment Results

*Algebra I:*  
146 students  
59 Did not Pass  
63 Pass  
23 No Results (6 due to waiver)  
1 Undetermined (did not complete test)  
43.2% Pass Rate

*English 10:*  
146 students  
51 Did not Pass  
68 Pass  
24 No Results (6 due to waiver)  
2 Undetermined (did not complete test)  
46.6% Pass Rate

Juniors Dec 2012 ECA Assessment Results

*Algebra I:*  
162 students  
78 Did not Pass  
50 Pass  
33 No Results (some due to waiver)  
1 Undetermined (did not complete test)  
30.9% Pass Rate

*English 10:*  
162 students  
66 Did not Pass  
50 Pass  
46 No Results (some due to waiver)  
30.9% Pass Rate

Sophomore Data will be reported on at the end

	<p>Algebra I: 142 students 81 Did not Pass 15 Pass 46 No Records 11% Pass Rate</p> <p>English 10: 142 students 3 Did not Pass 0 Pass 139 No Results 0% Pass Rate</p>	of year window
--	--	----------------