



Indiana State Board of Education

Room 225 State House
Indianapolis, Indiana 46204-2798

MEMORANDUM

TO: Members of the State Board of Education
FROM: Becky Bowman
DATE: March 20, 2012
SUBJECT: Approval of Proposed Board Member Districts for Indianapolis Public Schools

As you are aware, the State Board is responsible for establishing the boundaries of the IPS board member districts. In establishing the boundaries, the State Board must ensure that the boundaries are drawn on the basis of precinct lines and, to the extent practicable, the districts are of equal population. In addition, the population of the largest district may not be more than 5% larger than the population of the smallest district.

Attached are the materials received from the IPS Board of School Commissioners and the proposal jointly submitted by the Department and its community partners. You will note that, because the IPS Board voted to approve the district boundaries proposed by the Department and its community partners, there are no distinctions between the proposals. Chris Greisl will provide a more detailed explanation of the considerations and proposals at the Board meeting and answer any questions you may have.

IPS BOARD OF COMMISSIONERS' PROPOSAL

Becky Bowman

From: Christopher Greisl
Sent: Tuesday, March 06, 2012 2:21 PM
To: Becky Bowman
Subject: FW: Submission of IPS Proposal for Electoral Redistricting
Attachments: IPS Board Item Electoral Districts 2011.doc; Plan #2 Electoral Redistricting 2012 For Board Item.pdf

Christopher P. Greisl

Legal Counsel
Indiana Department of Education
151 W. Ohio Street
Indianapolis, IN 46204
317-234-4378
CGreisl@doe.in.gov

CONFIDENTIALITY NOTICE

This communication is for the sole use of the intended recipient(s) and may contain information that is confidential, privileged, or otherwise exempt from disclosure under applicable law. If you are not the intended recipient(s), the dissemination, distribution, or copying of this message is strictly prohibited. If you have received this communication in error, please contact the sender immediately and destroy all copies of the original message and any attachments. Receipt by anyone other than the named recipient(s) does not constitute a waiver of any applicable privilege.

From: Tricia Frye [<mailto:FryeT@ips.k12.in.us>]
Sent: Thursday, March 01, 2012 4:18 PM
To: Christopher Greisl
Cc: Hud Pfeiffer
Subject: Submission of IPS Proposal for Electoral Redistricting

Chris,

Attached is the IPS proposal for electoral redistricting and the Board Item that was approved by the Board of School Commissioners on Tuesday, February 28th. Please let me know if you have questions.

Thanks,
Tricia



Tricia Frye | Supervisor
Planning Department | Facilities Management Division
Indianapolis Public Schools
1129 East 16th St. | Indpls., IN 46202
t. 317.226.4554 | f. 317.226.4550 | fryet@ips.k12.in.us

Learning is not attained by chance. It must be sought for with ardor and attended to with diligence. ~Abigail Adams~

**BOARD OF SCHOOL COMMISSIONERS
INDIANAPOLIS PUBLIC SCHOOLS
Indianapolis, Indiana**

Agenda Item No.
Related Page(s)

Date:

Presented By:	<i>Eugene White</i>
Strategic Plan:	<i>Provide safe, clean learning environment</i>

TOPIC: Board of School Commissioners Proposed Electoral District Plan for Submission to the Indiana State Board of Education.

BACKGROUND INFORMATION:

Indiana State Board of Education is required to redistrict Indianapolis Public School Board member electoral districts after each census. IPS and other interested parties must follow state statute (IC 20-25-3-4) to create electoral districts on the basis of Marion County precinct lines. The districts must, as nearly as practicable, be of equal population with the population of the largest district not to exceed the population of the smallest district by more than 5 percent (5%).

The Indiana State Board of Education will review all proposals submitted to them. The deadline for proposals is March 6, 2012.

ADMINISTRATIVE CONSIDERATION:

After carefully reviewing all census blocks to ensure they are within IPS, we calculate the total population to be 297,181. The total population of each census block was used for the analysis. Each split precinct was reassigned to a specific district. The plan also meets the 5% Rule. Below is a breakdown of the population analysis:

Total Population of Current Board Districts:

District 1 - 59,899
District 2 - 59,026
District 3 - 59,195
District 4 - 57,744
District 5 - 61,317
Total – 297,181

Total Population of Proposed Board Districts:

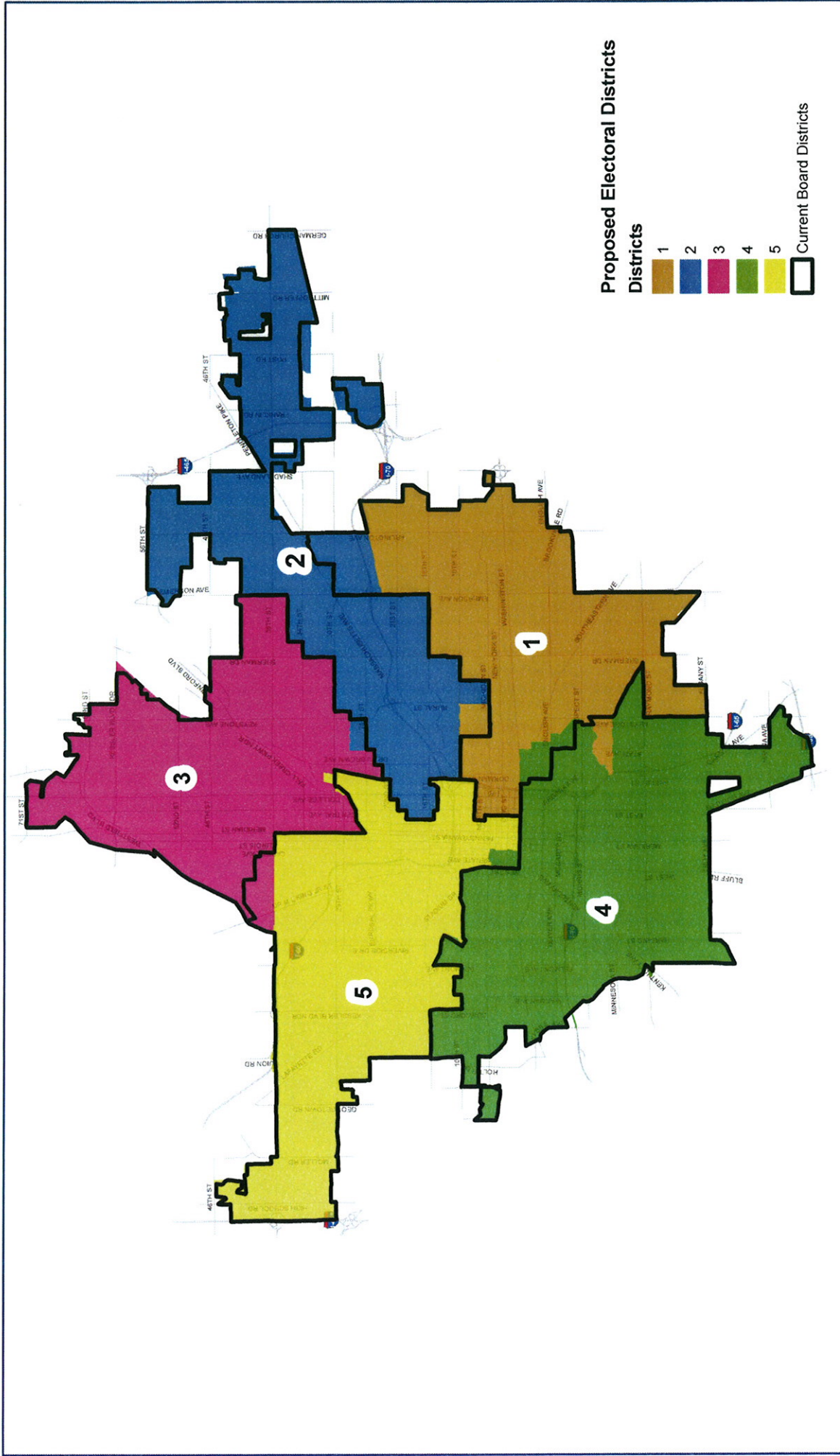
District 1 – 59,628
District 2 - 59,622
District 3 - 59,232
District 4 - 58,965
District 5 - 59,734
Total – 297,181

SUPERINTENDENT’S RECOMMENDATION:

I recommend the Board of School Commissioners approve the revised Indiana Department of Education proposed plan.



Proposal #2 Indianapolis Public Schools Electoral Districts



Source:
IPS Planning Department
Underlying Data Source: IMAGIS
and the Indiana Election Division
03 February 12



Proposed IPS Board Member Districts

This proposal is submitted by:

Christopher P. Greisl, Attorney, Indiana Department of Education

Joseph A. Slash, President & CEO, Indianapolis Urban League

Amos Brown, Host & Managing Editor, Afternoons with Amos, WTLC-AM

John R. Hammond III, Co-Chair, Public Affairs Group, Ice Miller, LLP

Michael B. O'Connor, Director, State Government Affairs, Lilly USA, LLC

M. Karega Rausch, Indianapolis Director, Stand for Children

Diana M. Daniels, Executive Director, National Council on
Educating Black Children

Honorable Bill Crawford, State Representative District 98

Honorable Mary Ann Sullivan, State Representative District 97

Angela Smith Jones, Director of Public Policy, Greater Indianapolis
Chamber of Commerce

Chrystal Ratcliffe, President, Greater Indianapolis National Association for the
Advancement of Colored People

Roderick E. Bohannon, Attorney, Greater Indianapolis National Association for the
Advancement of Colored People

Bill Taft, Executive Director, Local Initiatives Support Corporation - Indianapolis

Reverend C.L. Day, President, Concerned Clergy

Miriam Acevedo Davis, Executive Director, La Plaza, Inc.

March 2, 2012

Table of Contents

Introductory Letter to the State Board of Education.....	Page 3
Current Map of IPS Board Member Districts.....	Page 6
Current Map of IPS Board Member Districts (Split Precincts).....	Page 8
Proposed Map of IPS Board Member Districts.....	Page 10
Proposed Map of IPS Board Member Districts (Adjusted Splits).....	Page 12
Total Population Comparison.....	Page 14
Demographic Comparison.....	Page 15
Proposed Boundaries for Board District 1.....	Page 18
Proposed Boundaries for Board District 2.....	Page 20
Proposed Boundaries for Board District 3.....	Page 22
Proposed Boundaries for Board District 4.....	Page 24
Proposed Boundaries for Board District 5.....	Page 26



**Proposed IPS Board Member Districts
March 2, 2012**

Dear State Board of Education:

Indiana Code §20-25-3-4 instructs the State Board of Education to establish Indianapolis Public Schools' ("IPS") board member districts. The districts "must be drawn on the basis of precinct lines, and as nearly as practicable, of equal population with the population of the largest district not to exceed the population of the smallest district by more than five percent (5%). District lines must not cross precinct lines." *Indiana Code* § 20-25-3-4(f). According to the 2010 census data,¹ and the redistricting of Marion County's precincts,² IPS' current board member districts are unsustainable for two reasons: (1) the population of board member district five exceeds the population of board member district four by 6.3%; and (2) there are fourteen "split precincts," which encompass more than one board member district. Of those fourteen "split precincts," only ten have an effect on population. The remaining four are mapping disparities, which have no effect on population.³

The members of this committee represent a diversified group of individuals, whose knowledge of the IPS board member districts, and more specifically the areas affected by the split precincts, was highly influential in formulating this proposal. The experiences of each committee member, coupled with their positions as community leaders, provided significant guidance throughout this process. Represented groups include the National Association for the

¹ The 2010 census data was provided by the Indiana Election Board. In addition, IPS provided the Indiana Department of Education with 2010 census data and precinct GIS files. IPS received its census data from the Polis Center at IUPUI, and the GIS precinct files from the Indiana Election Board.

² Pursuant to recently enacted legislation (HEA 1601-2011), on August 3, 2011, Mayor Greg Ballard filed an objection with the Indiana Election Division of the United States Census Bureau over the Marion County precinct boundaries. City-County Councilor, Ryan Vaughn entered into a contract to redraw the precincts within Marion County so they complied with current Indiana law. While the proposed map was approved by the City-County Council on December 9, 2012, a finalized map was not made available until January 2012.

³ See "Current Map of IPS Board Member Districts (Split Precincts)," pp. 8-9. After census data and GIS mapping files were compiled, fourteen (14) precincts encompassed more than one board member district. Of those fourteen precincts, four (4) precincts encompassed an additional board member district which contained zero population. For example, these splits trickled over onto rivers and industrial areas; thus, although the boundaries of these four precincts had to be tightened to remain within one board member district, there was no overall effect on population by tightening the boundaries of these four precincts.



Indiana Department of Education

SUPPORTING STUDENT SUCCESS

Advancement of Colored People (“NAACP”), the Indianapolis Urban League, the National Council on Educating Black Children (“NCEBC”), Stand for Children, La Plaza, and locally elected state representatives.⁴ Community input, solicited through the committee members and their organizations, was the preeminent factor in developing this proposal.

In analyzing the areas directly affected by the ten split precincts, this committee examined the “communities of interest” associated with each split precinct, and determined whether the represented communities were more closely aligned with one board member district or the other. In constructing each board member district, this committee remained cognizant of discernible interest groups; used natural boundaries, when practical; and made the districts contiguous.⁵ In addition, this committee plotted the three IPS board members whose seats are not up for election in November 2012, with the intent of enforcing no negative impact on these board members.⁶

After this committee made its determination regarding the split precincts, and in accordance with the abovementioned factors, a proposed map was constructed. This map greatly reduced the population disparity that previously existed amongst the districts. In this proposal, the largest board member district (district five) exceeds the smallest board member district (district four) by only 1.3%. In addition, the population of each board member district was drawn “. . . as nearly as practicable, of equal population . . .” *Indiana Code* § 20-25-3-4(f).

⁴ In addition to Representatives Bill Crawford and Mary Ann Sullivan serving as committee members, Representatives John Bartlett, Gregory Porter, Vanessa Summers, and State Senator Greg Taylor all participated in a meeting regarding this proposal.

⁵ See 42 USCS §1973(a) “Voting Rights Act” (“[n]o voting qualification or prerequisite to voting or standard, practice, or procedure shall be imposed or applied by any State or political subdivision in a manner which results in a denial or abridgement of the right of any citizen of the United States to vote on account of race or color . . . (b) A violation of subsection (a) is established if, based on the totality of circumstances, it is shown that the political process leading to nomination or election in the State or political subdivision are not equally open to participation by members of a class of citizens protected by subsection (a) in that its members have less opportunity than other members of the electorate to participate in the political process and to elect representatives of their choice. . .”). See also *Thornburg v. Gingles*, 478 U.S. 30 (1986) (States and political subdivisions are prohibited from applying any voting prerequisite, practice, or procedure that denies or abridges a citizen’s right to vote based upon race).

⁶ The three incumbent board members are Dr. Michael D. Brown (District Five), Mrs. Samantha Adair-White (District Three), and Mrs. Andrea J. Roof (At-Large, District One). Pursuant to *Indiana Code* §20-25-3-4 (b), no more than two board members may reside in the same board member district.



Indiana Department of Education
SUPPORTING STUDENT SUCCESS

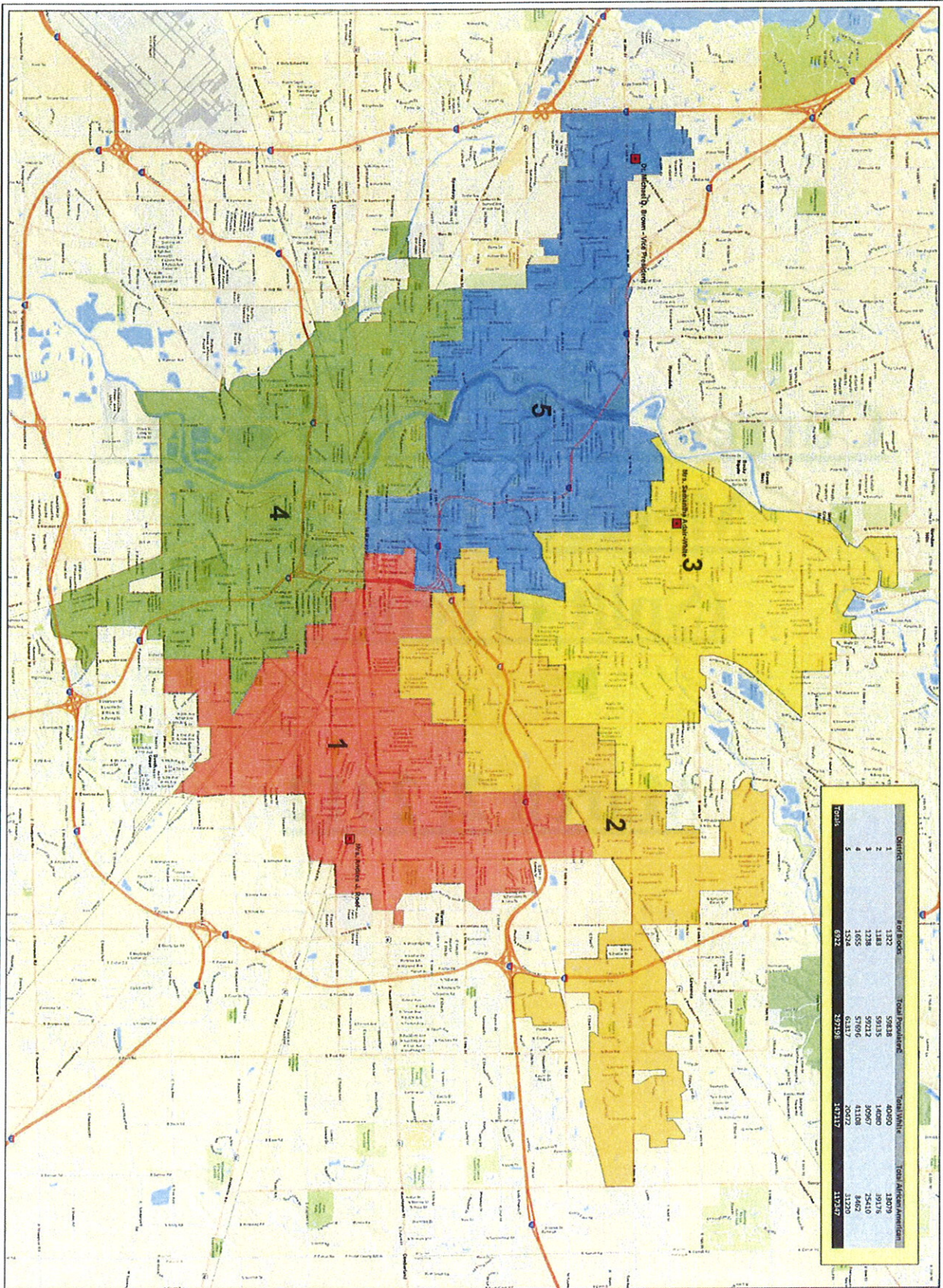
This committee appreciates the opportunity to present this proposal, and thanks the State Board of Education for its time and consideration.

Sincerely,

Christopher P. Greisl
Committee Chairperson
Legal Counsel, Indiana Department of Education
Office of Legal Affairs
cgreisl@doe.in.gov
(317) 234-4378

Current Map of IPS Board
Member Districts

March 2, 2012



Legend

- Incumbent Members
- Districts (Disolved)
- District
- 1
- 2
- 3
- 4
- 5

NORTH

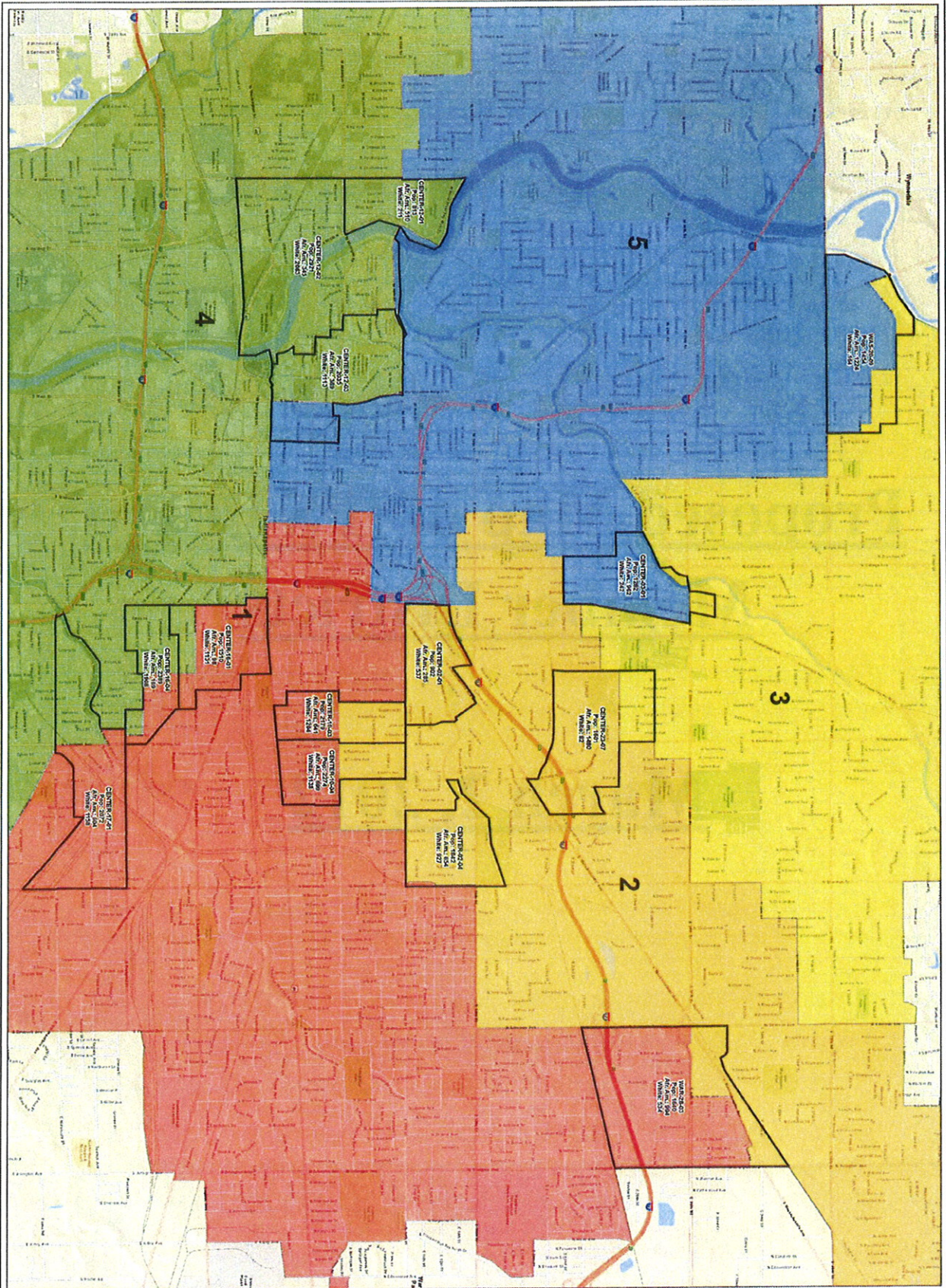
Source: U.S. Census Bureau, 2000 Census (Indianapolis, Indiana State Capitol, Central Business District, East (East Side), West (West Side), and University of Indianapolis).
 2000 Census of the United States, Census Bureau (Washington, DC: October 2001).
 Map created by: 2002 (October 2001) (www.2002.org)

Indianapolis Public Schools Districts

Date: February 6, 2012

Current Map of IPS Board
Member Districts
(Split Precincts)

March 2, 2012



Indianapolis Public Schools Split Precincts
 Date: February 6, 2012

Legend

- IPS Split Precincts
- Districts (Dissolved)
- District
- 1
- 2
- 3
- 4
- 5

NORTH

Source: Indianapolis Public Schools Districts (Copyright Indianapolis Public Schools)
 Updated Districts (Copyright Indianapolis Public Schools)
 2012 Districts (Copyright Indianapolis Public Schools)
 2012 Districts (Copyright Indianapolis Public Schools)
 2012 Districts (Copyright Indianapolis Public Schools)

Proposed Map of IPS Board
Member Districts

March 2, 2012

Proposed Map of IPS Board
Member Districts
(Adjusted Splits)

March 2, 2012

IPS Board Member Districts

Total Population

Current Map				
District	# of Blocks	Total Population	Total White	Total Black
1	1,322	59,838	40,490	13,079
2	1,183	59,135	14,080	39,176
3	1,238	59,212	30,967	25,410
4	1,655	57,696	41,108	8,462
5	1,524	61,317	20,472	31,220
Totals	6,922	297,198	147,117	117,347

District 5 (61,317) (-) District 4 (57,696) = 3,621
 3,621 / 57,696 = **6.2760%**

Proposed Map				
District	# of Blocks	Total Population	Total White	Total Black
1	1,295	59,628	40,473	12,701
2	1,220	59,622	13,594	40,341
*3	1,237	59,232	31,051	25,332
4	1,686	58,965	42,138	8,473
5	1,483	59,734	19,861	30,483
*Totals	6,921	297,181	147,117	117,330

*1 block was removed from District 3 because it was later determined to not be within IPS (17 people)
 297,198 (-) 297,181 = 17

District 5 (59,734) (-) District 4 (58,965) = 769
 769 / 58,965 = **1.304%**

IPS Board Member Districts Demographic Information

District	# of Blocks Current Map	# of Blocks Proposed Map	Differential	% Differential
1	1322	1295	-27	-2.04%
2	1183	1220	37	3.13%
3	1238	1237	-1	-0.08%
4	1655	1686	31	1.87%
5	1524	1483	-41	-2.69%
*Totals	6922	6921	-1	-0.01%

***1 District Block was removed from District 3 because it was later determined not to be within IPS**

District	Total Population Current Map	Total Population Proposed Map	Differential	% Differential
1	59838	59628	-210	-0.351%
2	59135	59622	487	0.824%
3	59212	59232	20	0.034%
4	57696	58965	1269	2.199%
5	61317	59734	-1583	-2.582%
*Totals	297198	297181	-17	-0.006%

*** 17 people were removed from "Current District 3," with the removal of the abovementioned block**

District	Total White Current Map	Total White Proposed Map	Differential	% Differential
1	40490	40473	-17	-0.042%
2	14080	13594	-486	-3.452%
3	30967	31051	84	0.271%
4	41108	42138	1030	2.506%
5	20472	19861	-611	-2.985%
Totals	147117	147117	0	0.000%

District	Total Black Current Map	Total Black Proposed Map	Differential	% Differential
1	13079	12701	-378	-2.890%
2	39176	40341	1165	2.974%
3	25410	25332	-78	-0.307%
4	8462	8473	11	0.130%
5	31220	30483	-737	-2.361%
*Totals	117347	117330	-17	-0.014%

*** The block removed from "Original District 3" contained 17 African Americans**

District	Total *AIAANA in Current Map	Total AIAANA in Proposed Map	Differential	% Differential
1	259	266	7	2.703%
2	178	161	-17	-9.551%
3	137	137	0	0.000%
4	350	360	10	2.857%
5	280	280	0	0.000%
Totals	1204	1204	0	0.000%

***American Indiana or Alaska Native ("AIAANA")**

District	Total Asian Current Map	Total Asian Proposed Map	Differential	% Differential
1	358	358	0	0.000%
2	254	249	-5	-1.969%
3	578	577	-1	-0.173%
4	717	894	177	24.686%
5	1015	844	-171	-16.847%
Totals	2922	2922	0	0.000%

District	Total *NHAOPI Current Map	Total NHAOPI Proposed Map	Differential	% Differential
1	40	31	-9	-22.500%
2	28	29	1	3.571%
3	14	13	-1	-7.143%
4	50	59	9	18.000%
5	24	24	0	0.000%
Totals	156	156	0	0.000%

***Native Hawaiian or Other Pacific Islander ("NHAOPI")**

District	Total Other Current Map	Total Other Proposed Map	Differential	% Differential
1	3716	3905	189	5.086%
2	3705	3559	-146	-3.941%
3	732	730	-2	-0.273%
4	5076	5049	-27	-0.532%
5	6374	6360	-14	-0.220%
Totals	19603	19603	0	0.000%

District	Two or More Current Map	Two or More Proposed Map	Differential	% Differential
1	1900	1894	-6	-0.316%
2	1707	1689	-18	-1.054%
3	1374	1392	18	1.310%
4	1936	1992	56	2.893%
5	1932	1882	-50	-2.588%
Totals	8849	8849	0	0.000%

**IPS BOARD MEMBER DISTRICTS
PROPOSED BOUNDARIES FOR BOARD MEMBER
DISTRICT 1**

March 2, 2012

Precinct	Population	District
CENTER-09-03	2183	1
CENTER-09-04	1568	1
CENTER-09-06	2354	1
CENTER-09-07	1820	1
CENTER-10-01	1163	1
CENTER-10-02	1854	1
CENTER-10-03	2179	1
CENTER-10-04	2274	1
CENTER-11-04	996	1
CENTER-11-05	2159	1
CENTER-16-02	1875	1
CENTER-16-03	1655	1
CENTER-17-01	2072	1
CENTER-17-03	1209	1
CENTER-17-04	1216	1
CENTER-17-05	1892	1
CENTER-25-01	1809	1
CENTER-25-02	2163	1
CENTER-25-03	1365	1

CENTER-25-04	2178	1
CENTER-25-05	1391	1
CENTER-30-07	2179	1
PER-PE-04	0	1
WAR-18-01	1302	1
WAR-18-02	1310	1
WAR-18-03	1430	1
WAR-18-04	1590	1
WAR-18-05	1173	1
WAR-18-06	1680	1
WAR-18-07	1196	1
WAR-28-04	1942	1
WAR-28-05	1274	1
WAR-28-06	1382	1
WAR-28-07	793	1
WAR-28-08	613	1
WAR-28-09	1407	1
WAR-28-10	1451	1
WAR-28-11	1261	1
WAR-WR-22	270	1
WAR-WR-30	0	1
Totals	59628	

**IPS BOARD MEMBER DISTRICTS
PROPOSED BOUNDARIES FOR BOARD MEMBER
DISTRICT 2**

March 2, 2012

Precinct	Population	District
CENTER-01-06	1450	2
CENTER-01-07	1352	2
CENTER-01-08	1046	2
CENTER-01-09	715	2
CENTER-01-10	744	2
CENTER-02-01	902	2
CENTER-02-02	1826	2
CENTER-02-03	1158	2
CENTER-02-04	1842	2
CENTER-03-03	490	2
CENTER-03-04	419	2
CENTER-03-05	767	2
CENTER-09-01	1096	2
CENTER-09-02	1833	2
CENTER-09-05	774	2
CENTER-10-05	773	2
CENTER-23-06	1007	2
CENTER-23-07	1601	2
CENTER-23-08	447	2
CENTER-23-09	420	2
LAW-27-01	1250	2
LAW-27-02	1422	2
LAW-27-03	1078	2
LAW-27-04	1332	2
LAW-27-05	1689	2
LAW-27-06	1136	2
LAW-27-07	1435	2
LAW-27-08	1556	2
LAW-27-09	1795	2
LAW-27-10	2090	2
LAW-27-11	1608	2

LAW-27-12	2089	2
LAW-27-13	1532	2
LAW-27-14	1776	2
LAW-LA-43	0	2
LAW-LA-51	271	2
LAW-LA-52	0	2
LAW-LA-57	494	2
LAW-LA-58	0	2
LAW-LA-63	0	2
LAW-LA-65	0	2
LAW-LA-66	334	2
WAR-28-01	1086	2
WAR-28-02	973	2
WAR-28-03	1640	2
WAR-28-12	1011	2
WAR-28-13	1776	2
WAR-28-14	1868	2
WAR-28-15	1539	2
WAR-28-16	3385	2
WAR-28-17	1585	2
WAR-WR-01	1096	2
WAR-WR-02	32	2
WAR-WR-03	0	2
WAS-WS-66	82	2
Totals	59622	

**IPS BOARD MEMBER DISTRICTS
PROPOSED BOUNDARIES FOR BOARD MEMBER
DISTRICT 3**

March 2, 2012

Precinct	Population	District
CENTER-01-01	1023	3
CENTER-01-02	867	3
CENTER-01-03	812	3
CENTER-01-04	812	3
CENTER-01-05	981	3
CENTER-04-01	1468	3
CENTER-04-02	1496	3
CENTER-04-03	1484	3
CENTER-04-04	1390	3
CENTER-04-05	825	3
CENTER-23-01	638	3
CENTER-23-02	569	3
CENTER-23-03	826	3
CENTER-23-04	1452	3
CENTER-23-05	657	3
WAS-20-01	619	3
WAS-20-02	978	3
WAS-20-03	3315	3
WAS-20-04	1009	3
WAS-20-05	1095	3
WAS-20-06	1439	3
WAS-20-07	798	3
WAS-20-08	846	3
WAS-20-09	1454	3
WAS-20-10	1211	3
WAS-20-11	809	3
WAS-20-12	1374	3
WAS-21-01	1237	3
WAS-21-02	1507	3
WAS-21-03	966	3
WAS-21-04	1005	3

WAS-21-05	1257	3
WAS-21-06	1279	3
WAS-21-07	1297	3
WAS-21-08	1164	3
WAS-21-09	1057	3
WAS-21-10	1042	3
WAS-21-11	1434	3
WAS-21-12	1350	3
WAS-21-13	1291	3
WAS-22-01	1031	3
WAS-22-02	497	3
WAS-22-03	470	3
WAS-22-04	1430	3
WAS-22-05	1390	3
WAS-22-06	949	3
WAS-22-07	1555	3
WAS-22-08	752	3
WAS-31-01	840	3
WAS-31-02	1907	3
WAS-31-03	824	3
WAS-31-04	1247	3
WAS-WS-42	88	3
WAS-WS-43	119	3
Totals	59232	

**IPS BOARD MEMBER DISTRICTS
PROPOSED BOUNDARIES FOR BOARD MEMBER
DISTRICT 4**

March 2, 2012

Precinct	Population	District
CENTER-12-01	813	4
CENTER-12-02	2921	4
CENTER-12-03	2035	4
CENTER-13-01	1832	4
CENTER-13-02	1205	4
CENTER-13-03	2366	4
CENTER-13-04	822	4
CENTER-13-05	2686	4
CENTER-14-01	1855	4
CENTER-14-02	2423	4
CENTER-15-01	1922	4
CENTER-15-02	1930	4
CENTER-16-01	1510	4
CENTER-16-04	2389	4
CENTER-16-05	2533	4
CENTER-17-02	2356	4
CENTER-30-01	1381	4
CENTER-30-02	1072	4
CENTER-30-03	928	4
CENTER-30-04	1862	4
CENTER-30-05	1316	4
CENTER-30-06	1714	4
DEC-DE-06	0	4
PER-26-01	1502	4
PER-26-02	3150	4
PER-26-03	1594	4
WAY-19-01	2085	4
WAY-19-04	1637	4
WAY-19-05	976	4
WAY-19-06	1207	4
WAY-24-01	1497	4
WAY-24-02	1023	4

WAY-24-03	1002	4
WAY-24-04	1572	4
WAY-24-05	1846	4
WAY-WY-27	0	4
WAY-WY-28	0	4
WAY-WY-36	3	4
WAY-WY-59	0	4
Totals	58965	

**IPS BOARD MEMBER DISTRICTS
PROPOSED BOUNDARIES FOR BOARD MEMBER
DISTRICT 5**

March 2, 2012

Precinct	Population	District
CENTER-03-01	1282	5
CENTER-03-02	1291	5
CENTER-05-01	1411	5
CENTER-05-02	440	5
CENTER-05-03	992	5
CENTER-05-04	1212	5
CENTER-05-05	316	5
CENTER-05-06	371	5
CENTER-06-01	883	5
CENTER-06-02	1270	5
CENTER-06-03	1221	5
CENTER-06-04	1142	5
CENTER-06-05	886	5
CENTER-06-06	1075	5
CENTER-07-01	771	5
CENTER-07-02	1323	5
CENTER-07-03	925	5
CENTER-08-01	1783	5
CENTER-08-02	1128	5
CENTER-08-03	1179	5
CENTER-11-01	1435	5
CENTER-11-02	585	5
CENTER-11-03	1101	5
PIKE-32-01	924	5
PIKE-32-02	1413	5
PIKE-32-03	2061	5
PIKE-PI-49	0	5
PIKE-PI-50	0	5
PIKE-PI-51	0	5
WAS-WS-67	0	5
WAY-19-02	774	5

WAY-19-03	1132	5
WAY-29-01	1367	5
WAY-29-02	2149	5
WAY-29-03	1580	5
WAY-29-04	2245	5
WAY-29-05	2064	5
WAY-29-06	1373	5
WAY-29-07	2252	5
WAY-29-08	716	5
WAY-29-09	825	5
WAY-29-10	4137	5
WAY-29-11	1979	5
WAY-29-12	364	5
WAY-29-13	1209	5
WAY-29-14	937	5
WAY-29-15	1571	5
WAY-29-16	1420	5
WAY-29-17	1382	5
WAY-29-18	1838	5
WAY-WY-10	0	5
Totals	59734	