

# Growth in the Evansville Vanderburgh School Corporation

Best Practices – Innovations in Education – Student Successes



# Students Served

**22,558** students in grades PK-12

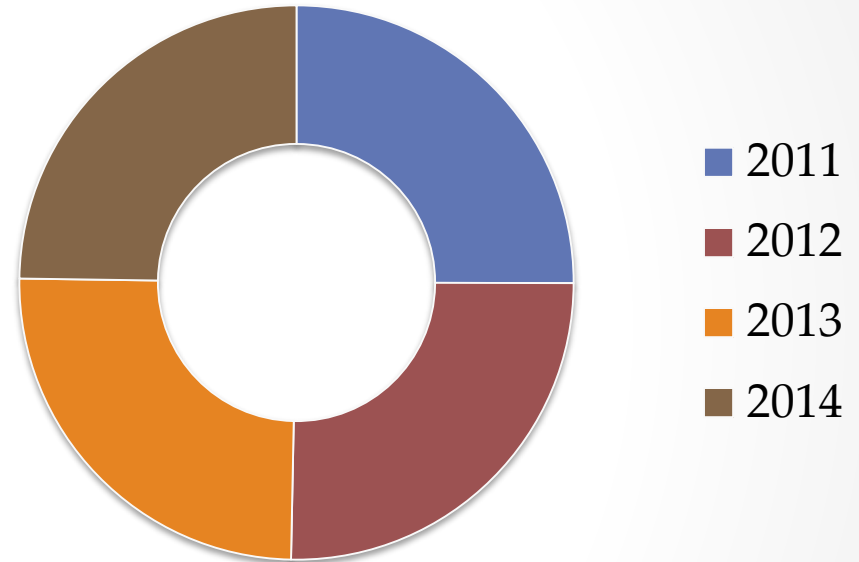
- **60%** qualify for free and reduced lunch
- **71%** white
- **14%** Black or African American
- **1.3%** Asian
- **3.7%** Hispanic/Latino

**39** schools

**1,419** teachers

**\$227.2** FY14 board approved budget

## EVSC Enrollment



**More than half of EVSC's student population lives in poverty.  
Transformation Zone School population = >92% poverty**

## INDIANA

## Education, From The Capitol To The Classroom

LEARNING ▾

TEACHING ▾

PERFORMANCE ▾

POLICY ▾

FUNDING ▾

Search This Site



## Evansville Has The Secret Recipe To School Turnaround Success

NOVEMBER 3, 2014 11:37 AM

Comment

BY CLAIRE MCINERNY

Tweet &lt; 28

Last year, the school district in Evansville did something unheard of. They had five schools consistently receiving F's from the state, and some of those schools were performing so poorly that the state was on the verge of taking them over. So the superintendent, teachers union and community came up with a plan that is exceeding expectations: they accepted that some of their schools needed



CLAIRE MCINERNY (STATEIMPACT INDIANA)

## ABOUT STATEIMPACT INDIANA

StateImpact Indiana is a collaboration of [WFIU](#) and Indiana Public Broadcasting stations to explain the effects of state education policy on people's lives.

[Learn More »](#) [Support StateImpact Indiana »](#)



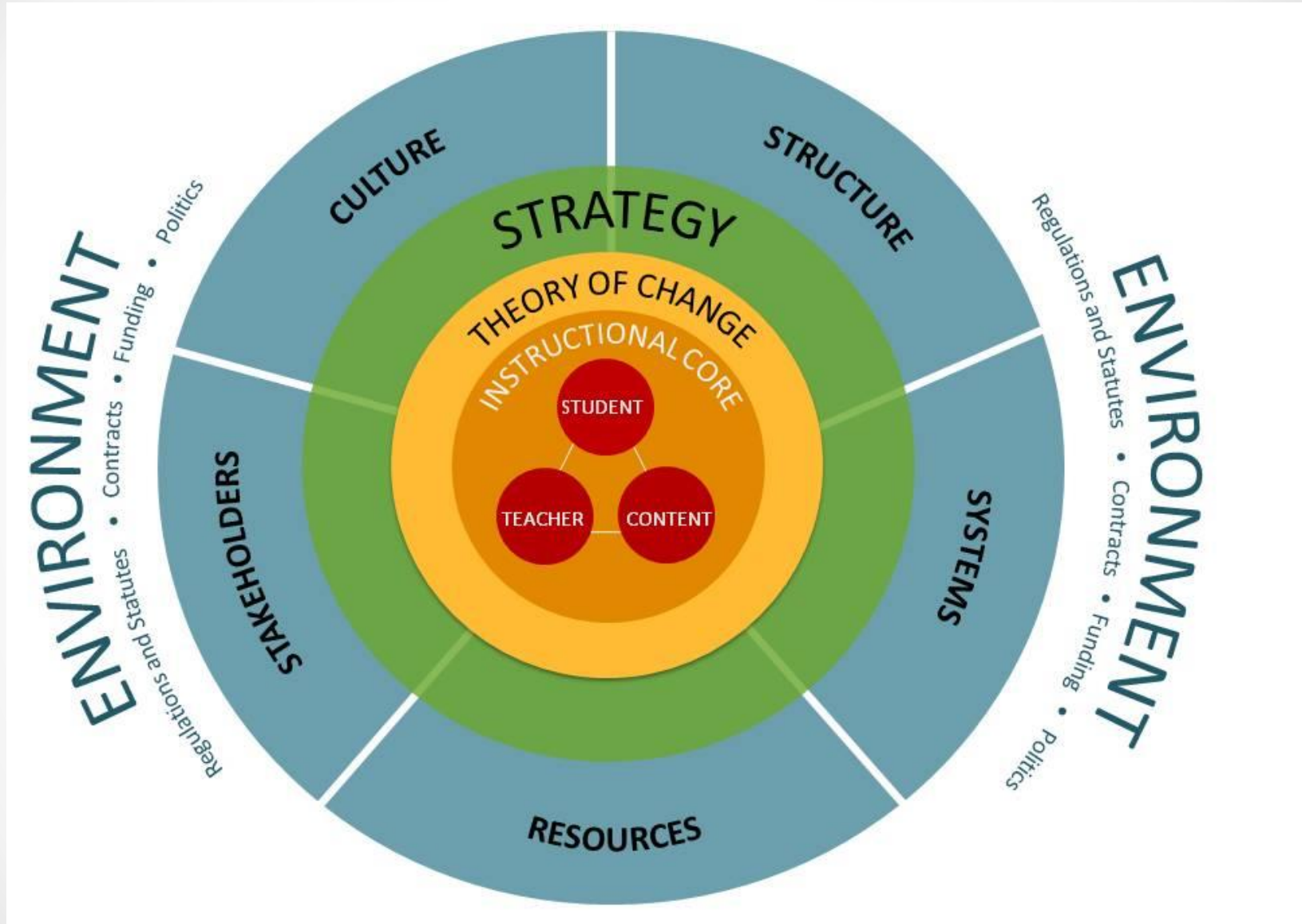
SUPPORT FOR STATEIMPACT INDIANA COMES FROM

- Hardwood Flooring
- Bamboo Flooring
- Cork Flooring

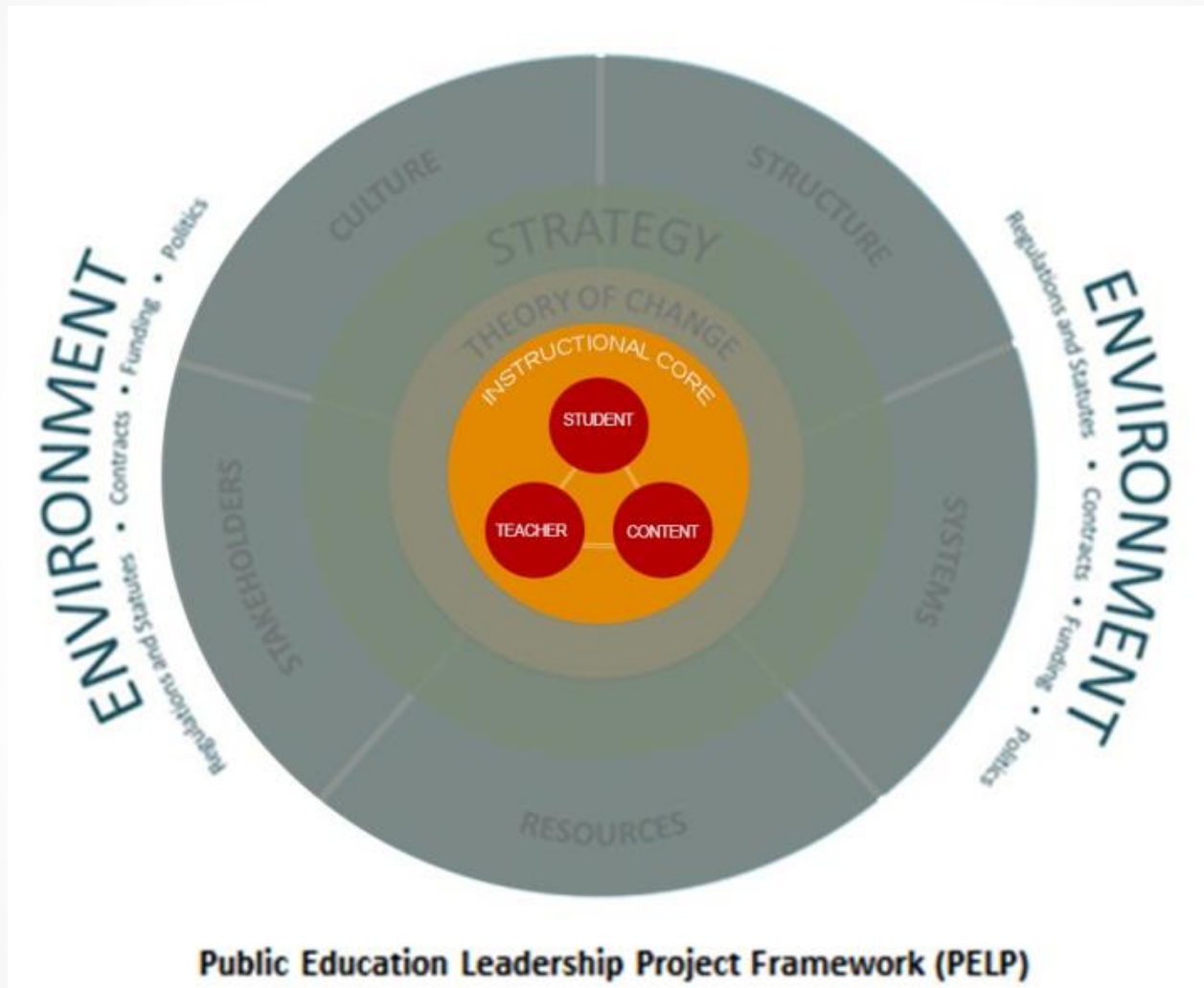
HARDWOOD FLOORS FOR LESS!  
LUMBER LIQUIDATORS

**“There must be something different in the water in Evansville”**  
- Said during interview by Reporter Claire McInerney

# Public Education Leadership Project Framework (PELP)



# Focus on the Instructional Core



# Continuous Improvement Process

## Three Priorities

### STUDENT LEARNING

Ensure highly effective teachers and school leaders deliver rigorous curriculum, instruction and assessment to all students

### INVESTING IN EFFECTIVE TEACHERS AND LEADERS

Develop a human capital strategy focused upon the development and retention of effective teachers and leaders

### INFRASTRUCTURE

Develop the infrastructure to support student success

# EVSC's Alignment to Best Practices

Rtl & PBIS	Collaborative Relationship with ETA	Learning Leadership Cadre
School Planning Process	Professional Learning Communities	Performance Management
Operational Excellence	Full-Day Kindergarten (for past 25 years)	Leader in Pre-K Education
Equity Model to Transformation Zone	Data Warehouse	Full Service Community Schools

**There is intentionality behind the decision making process within the EVSC to constantly align the organization to the most current best practices.**

# Full-Day Kindergarten

EVSC has been a Leader in  
Full-Day Kindergarten for Past 25 Years



# Pre-Kindergarten

EVSC has been a leader in offering  
Pre-kindergarten education since 2009

# Collaboration

Our collaborative relationship with the  
Evansville Teachers Association led to the  
creation of our Equity Model...the precursor  
to the

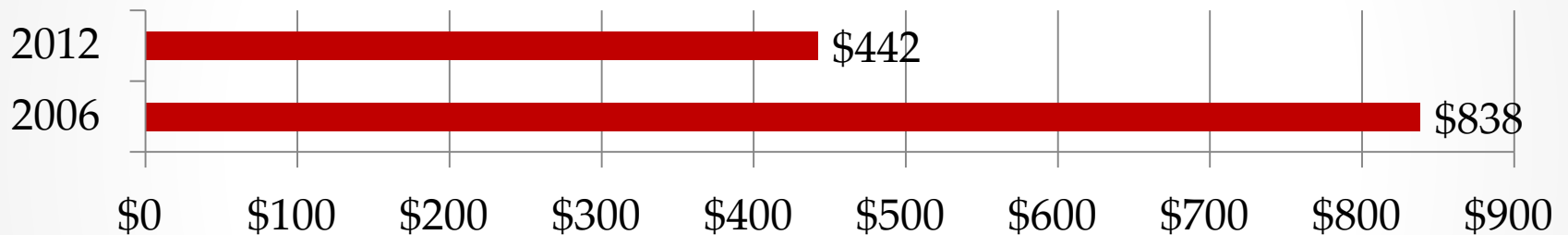
EVSC TRANSFORMATION ZONE

# Performance Management

Intentional use of Performance  
Management sessions to drive  
school improvement

# Operational Excellence

## Central Office Costs Per Student



**A lean central office** has allowed the EVSC to use funds saved for the core work of the corporation -- educating students in and outside of the classroom

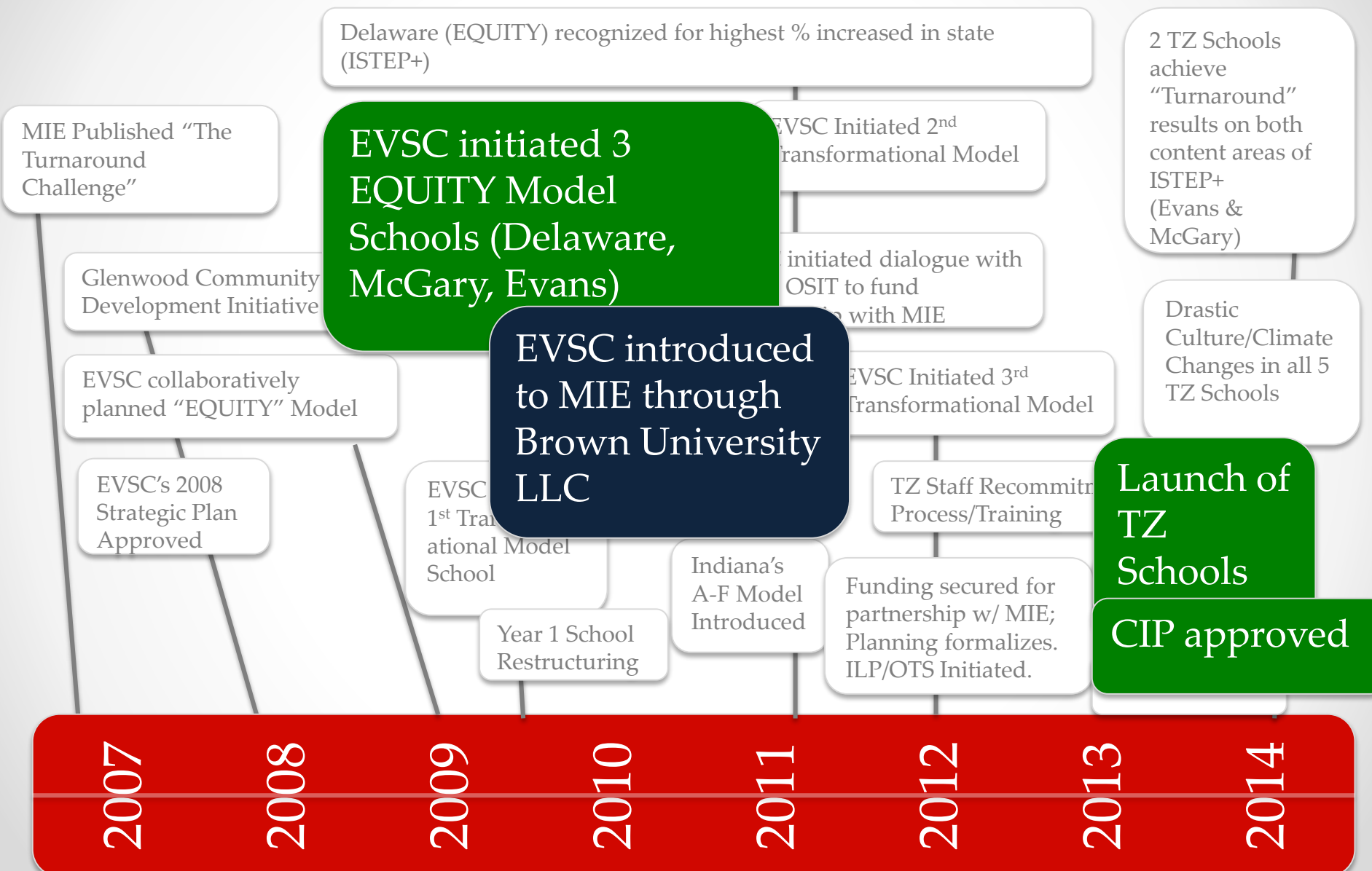
# Changes that Impact Students

---

- Individual & classroom technology
- Added 34 minutes to the instructional day for elementary students
- New evaluation tool for teachers
- Job-embedded professional development
- Response to Intervention (RtI)
- Creation of Transformation Zone
- Many more!



# Transformation Timeline



MIE Published "The Turnaround Challenge"

Glenwood Community Development Initiative

EVSC collaboratively planned "EQUITY" Model

EVSC's 2008 Strategic Plan Approved

**EVSC initiated 3 EQUITY Model Schools (Delaware, McGary, Evans)**

**EVSC introduced to MIE through Brown University LLC**

EVSC 1st Transformational Model School

Year 1 School Restructuring

Indiana's A-F Model Introduced

EVSC Initiated 2nd Transformational Model

initiated dialogue with OSIT to fund partnership with MIE

EVSC Initiated 3rd Transformational Model

TZ Staff Recommitment Process/Training

Funding secured for partnership w/ MIE; Planning formalizes. ILP/OTS Initiated.

2 TZ Schools achieve "Turnaround" results on both content areas of ISTEP+ (Evans & McGary)

Drastic Culture/Climate Changes in all 5 TZ Schools

**Launch of TZ Schools**

**CIP approved**

2007 2008 2009 2010 2011 2012 2013 2014

# EVSC Develops Internal Lead Partner

---

2009

EVSC works with local Teacher's Association to create Equity Schools model

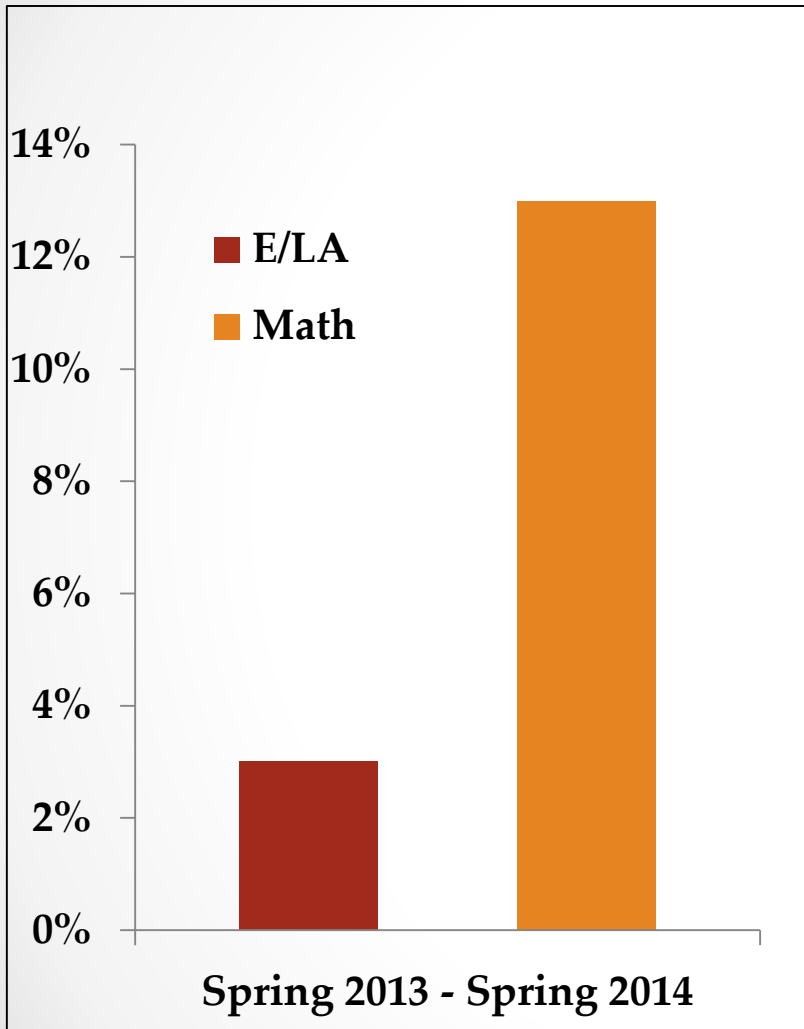
2012

EVSC works with Mass Insight to develop internal lead partner

2013

Office of Transformational Support Oversees Five EVSC schools

# Transformation Zone – First Year



## Year One Improvement Highlights

### Evans Elementary

11.6% in E/LA

13.7% Math

### McGary Middle School

5.2 E/LA

12% Math



# Unprecedented Growth in 2014 School Accountability Grades

Delaware  
Elementary  
School

- 96.4% Poverty
- Since Equity:  
+19.2% in ELA  
+22.2% in Math

A

2014 = A

2013 = B

2012 = C

Evans  
School

- 93.1% Poverty
- Since Equity  
+14% in ELA  
+29.7% in Math

A

2014 = A

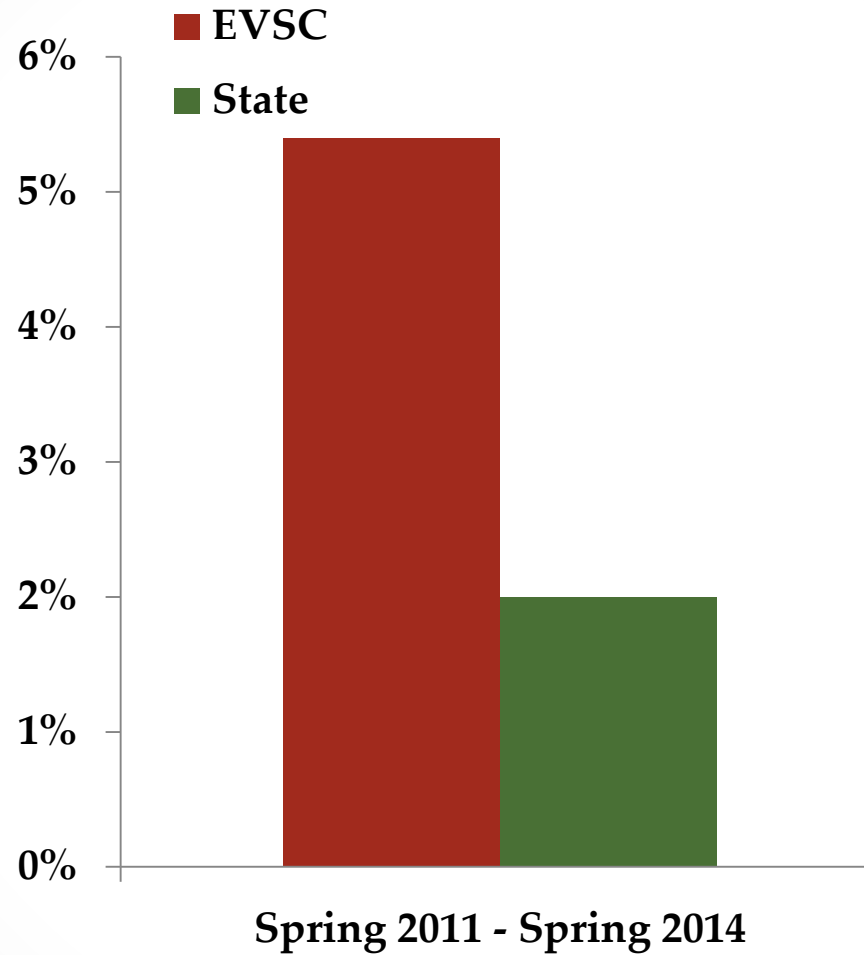
2013 = F

2012 = C

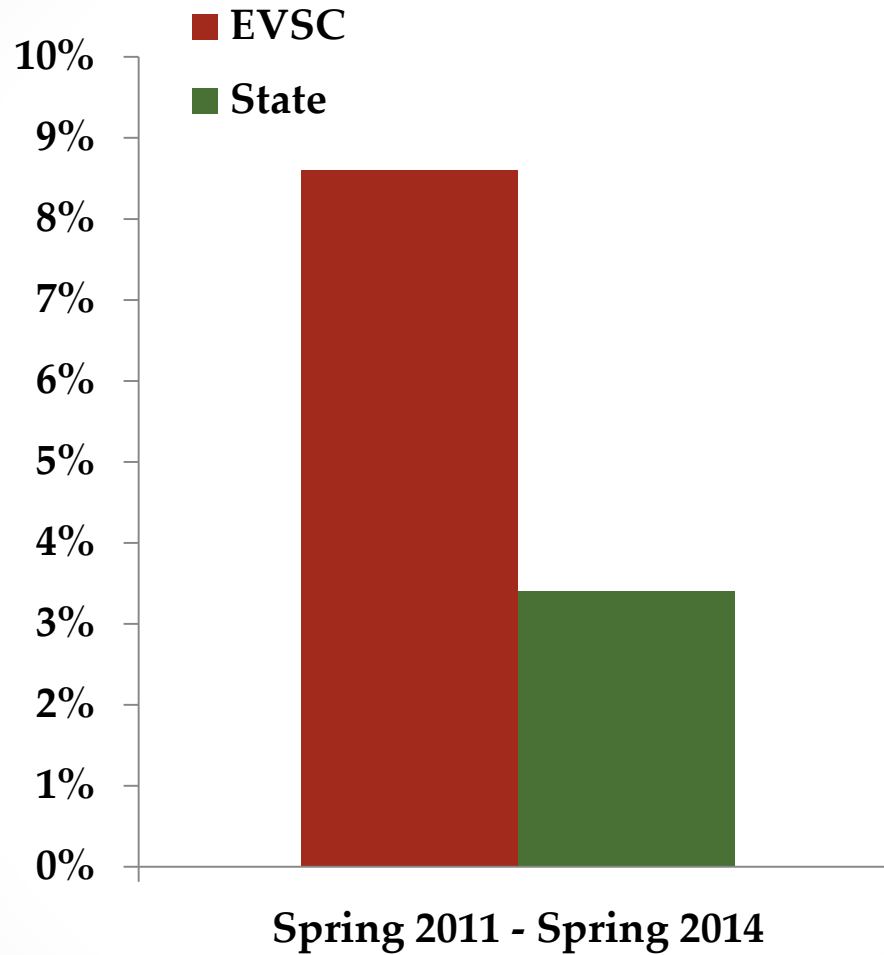
# EVSC Sees Double % Growth in ISTEP+ Scores

Grade	English/Language Arts			Math		
	<u>2010</u>	<u>2014</u>	<u>4-year increase</u>	<u>2010</u>	<u>2014</u>	<u>4-year increase</u>
3	75%	75%	0%	68%	70%	2%
4	70%	81%	11%	65%	76%	11%
5	64%	74%	10%	72%	84%	12%
6	61%	74%	13%	61%	81%	20%
7	64%	72%	8%	62%	76%	14%
8	61%	69%	8%	60%	74%	14%

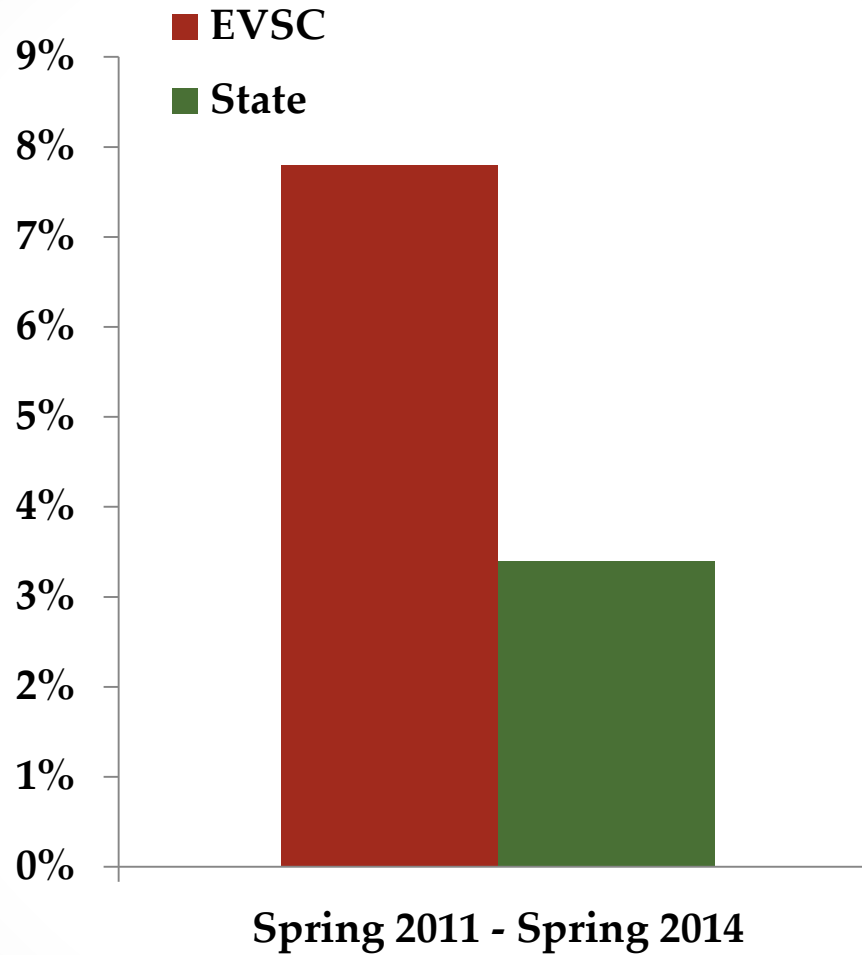
# ISTEP Growth Rate (E/LA)



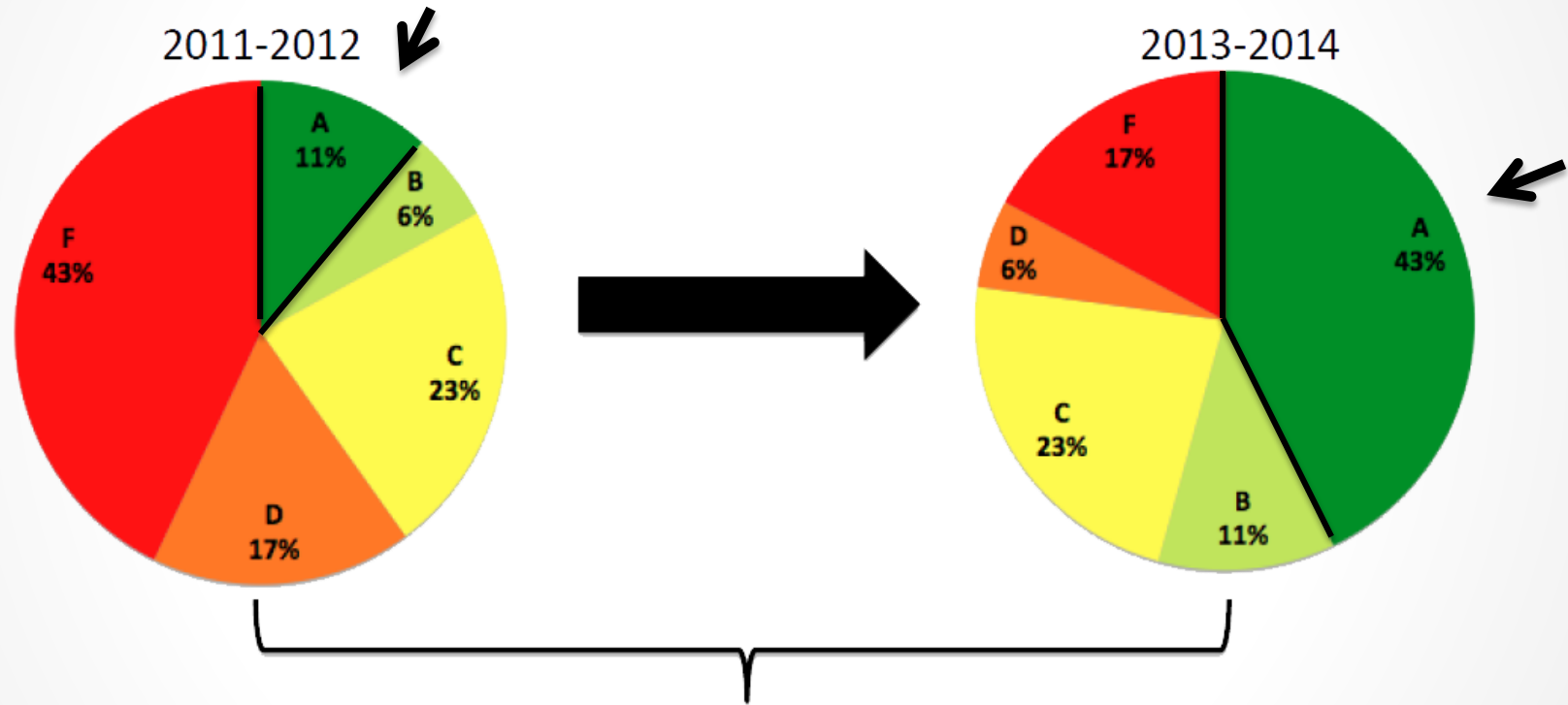
# ISTEP Growth Rate (Math)



# ISTEP Growth Rate (Passing Both)



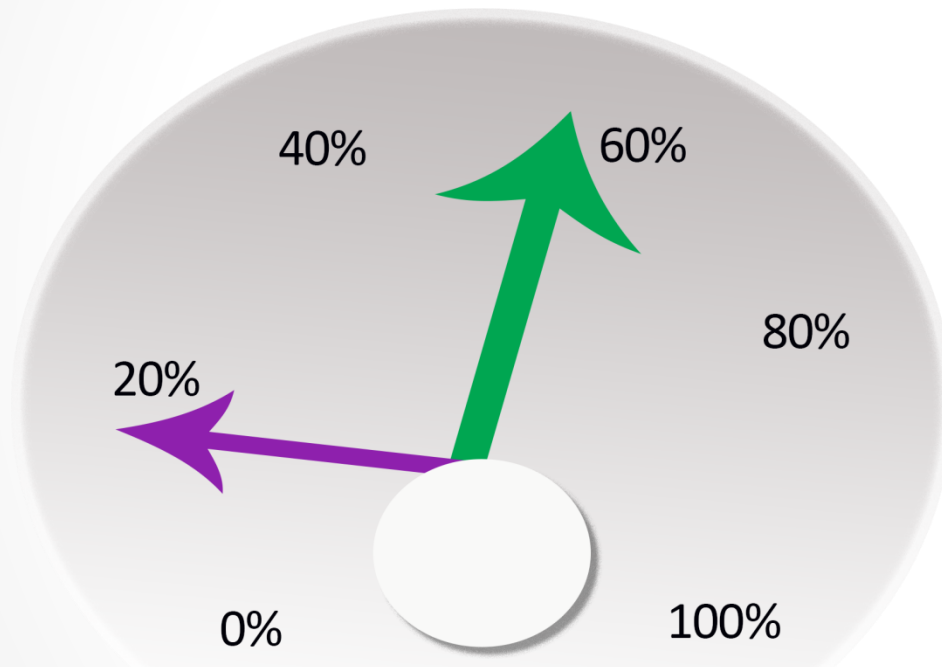
# Unprecedented Growth in School Accountability Grades



300 % growth in the percentage of "A" and "B" Schools in just two years

# Unprecedented Growth in School Accountability Grades

---



**% of Schools Earning As and Bs**

# Named to College Board's Advanced Placement District Honor Roll

---

The EVSC was one of *20 Indiana districts* and one of 547 districts across the **United States** and **Canada** to be named to the 5<sup>th</sup> annual AP District Honor Roll.



The award recognizes districts who increased access to AP course work while simultaneously maintaining or increasing the percentage of students earning scores of 3 or higher on AP exams.



# National Award for District Use of Data



## Our Vision

Excellence in Student Achievement



## Our Mission

Providing Outstanding Educational Opportunities Through Shared, Committed Responsibility

## Our Values

- Students Come First
- Intentionality
- Responsibility
- Collaboration
- Great People Matter

