

*my*IPS



# ARLINGTON COMMUNITY HIGH SCHOOL UPDATE

December 2, 2015

Dr. Lewis D. Ferebee, Superintendent

Dr. Wanda Legrand, Deputy Superintendent for Academics

## transitional tasks

- operations
- parents and community
- student records
- student services
- special education
- human capital
- performance targets

## current state

- enrollment update
- successes
- initial challenges
- support provided
- current conditions
- next steps

## needs assessment

- technology
- facilities management
- food service
- school police
- transportation

# operations



5

## needs identified

HVAC system	\$2,500,000
Plumbing	2,200,000
Technology	1,222,000
Roof replacement	600,000
<b>Estimated Total:</b>	<b>\$6,522,000</b>

## other needs identified

- reactivate phone system
- copiers and printing
- security hardware
- textbooks
- supplies (*musical instruments, art & science*)

# parents and community



7

Community Meetings

Surveys

ConnectEd Phone Calls

Transition Activities

## timeline

March – June 2015

### Student Records

Transcripts

Electronic  
Records

Verification  
Processes

### Special Education

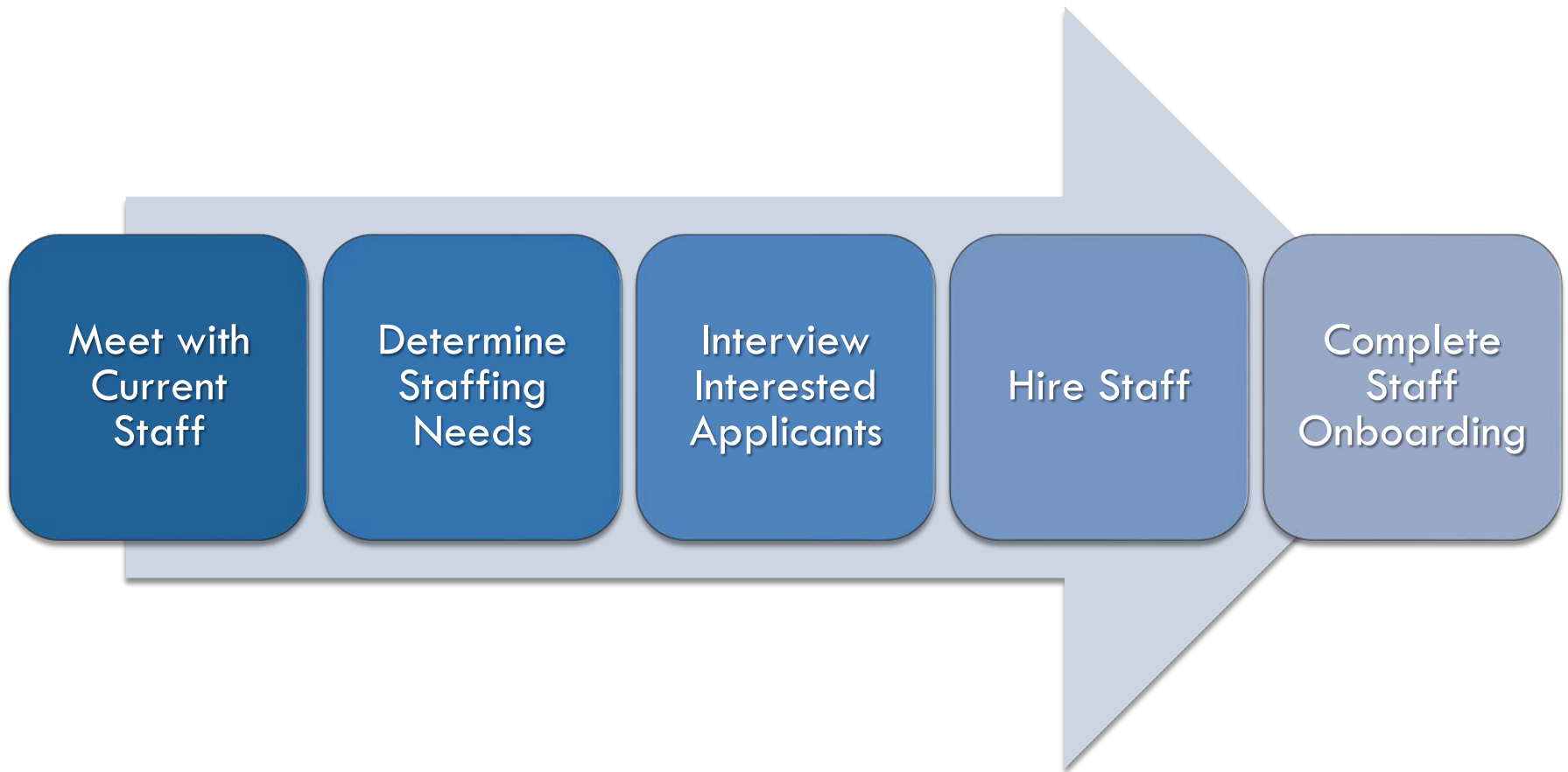
Records & Files

Self-contained  
Classrooms

Staffing  
Allocations



# human capital



# performance targets



10

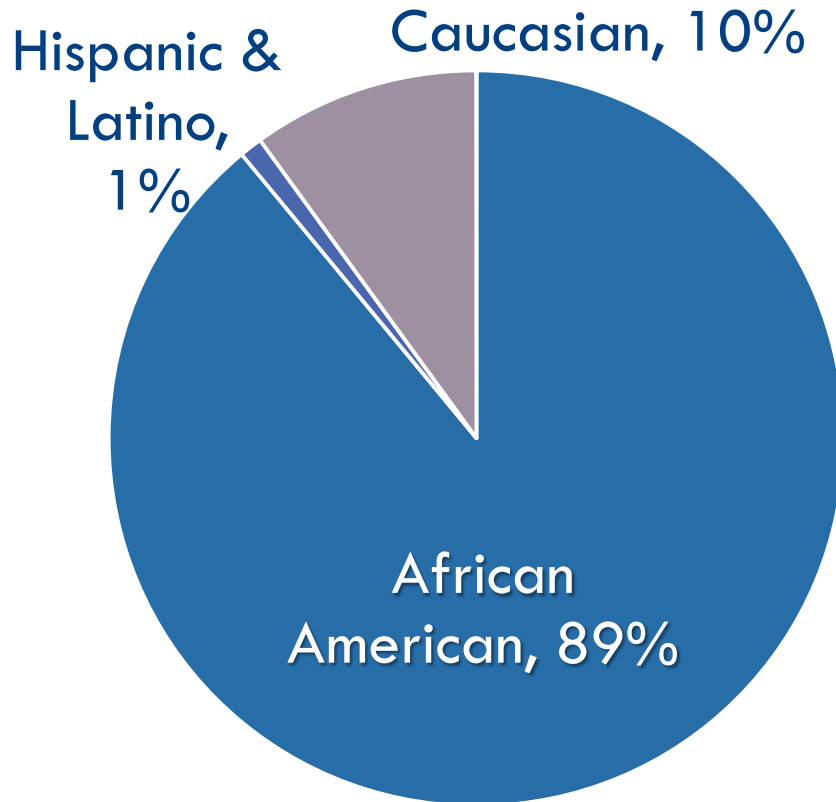
- increase graduation rate
- reduce non-proficiency by  $\geq 10\%$  annually
- increase scholarship dollars earned
- AP (Advanced Placement)
  - ▣ performance
  - ▣ participation



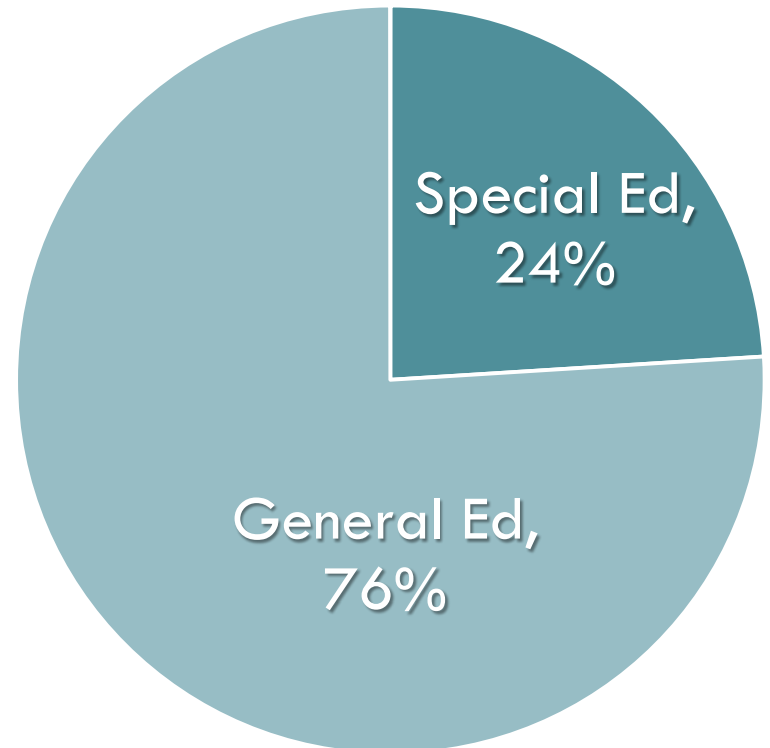
11

current state

## race/ethnicity



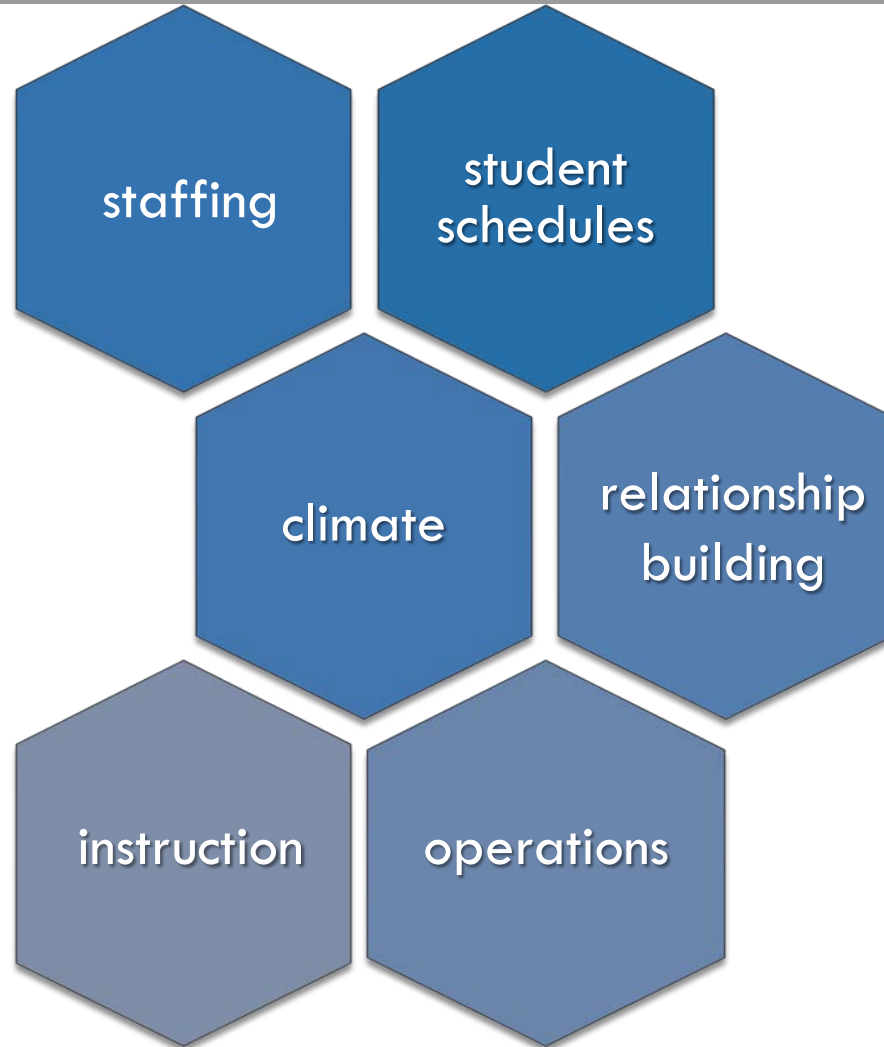
## program



# successes



# initial challenges



# support provided



15

## Transformation Zone

- AIO
- Director
- Academic Coaches

## Additional Positions

- Dean
- Behavior Intervention Specialist (3)

## Mass Insight

- School Readiness Assessment
- Instructional Support

## Community

- Alumni Volunteers & Donations
- Mentoring
- Monitors
- NAACP

# current conditions

November

- Class locations adjusted
- Grade level assemblies
- Increased accountability

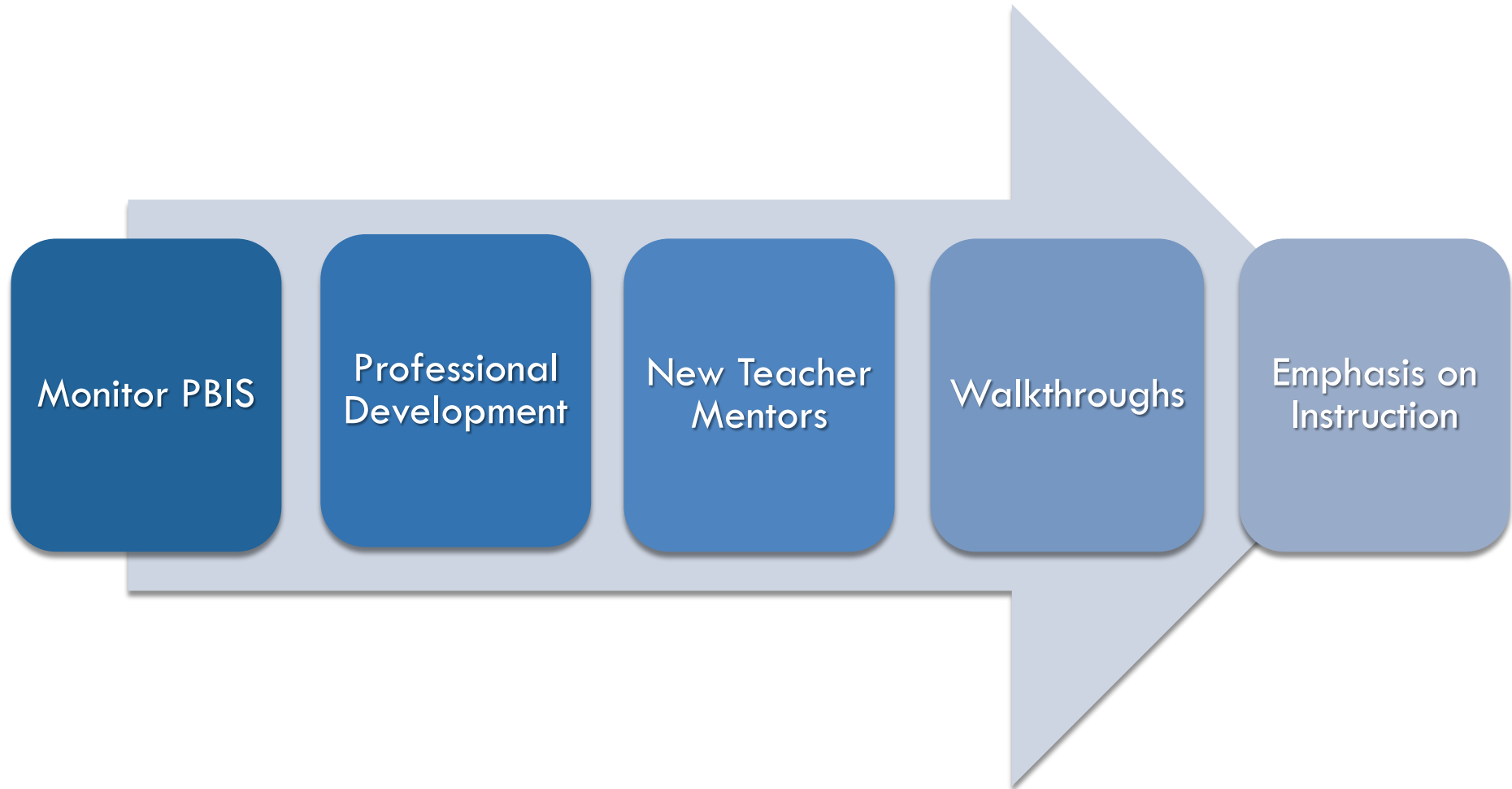
October

- Positive Behavior Intervention Supports
- Professional Development





# next steps



*my*IPS

