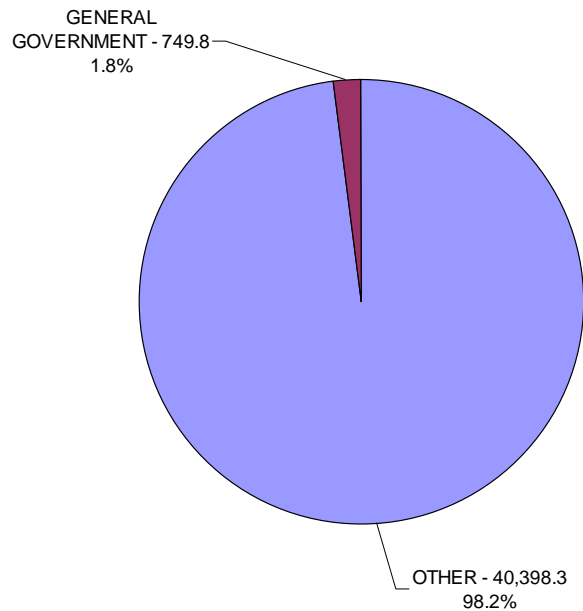


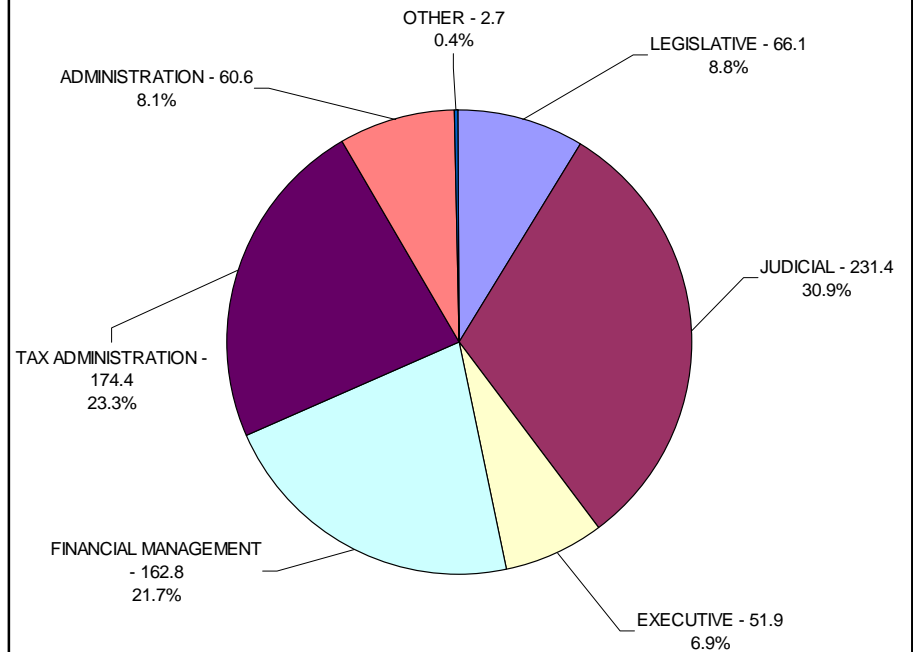
RECOMMENDED OPERATING EXPENDITURES

2003-2005 Biennium

General Government's Share
\$749,827,843 of \$41,148,152,604



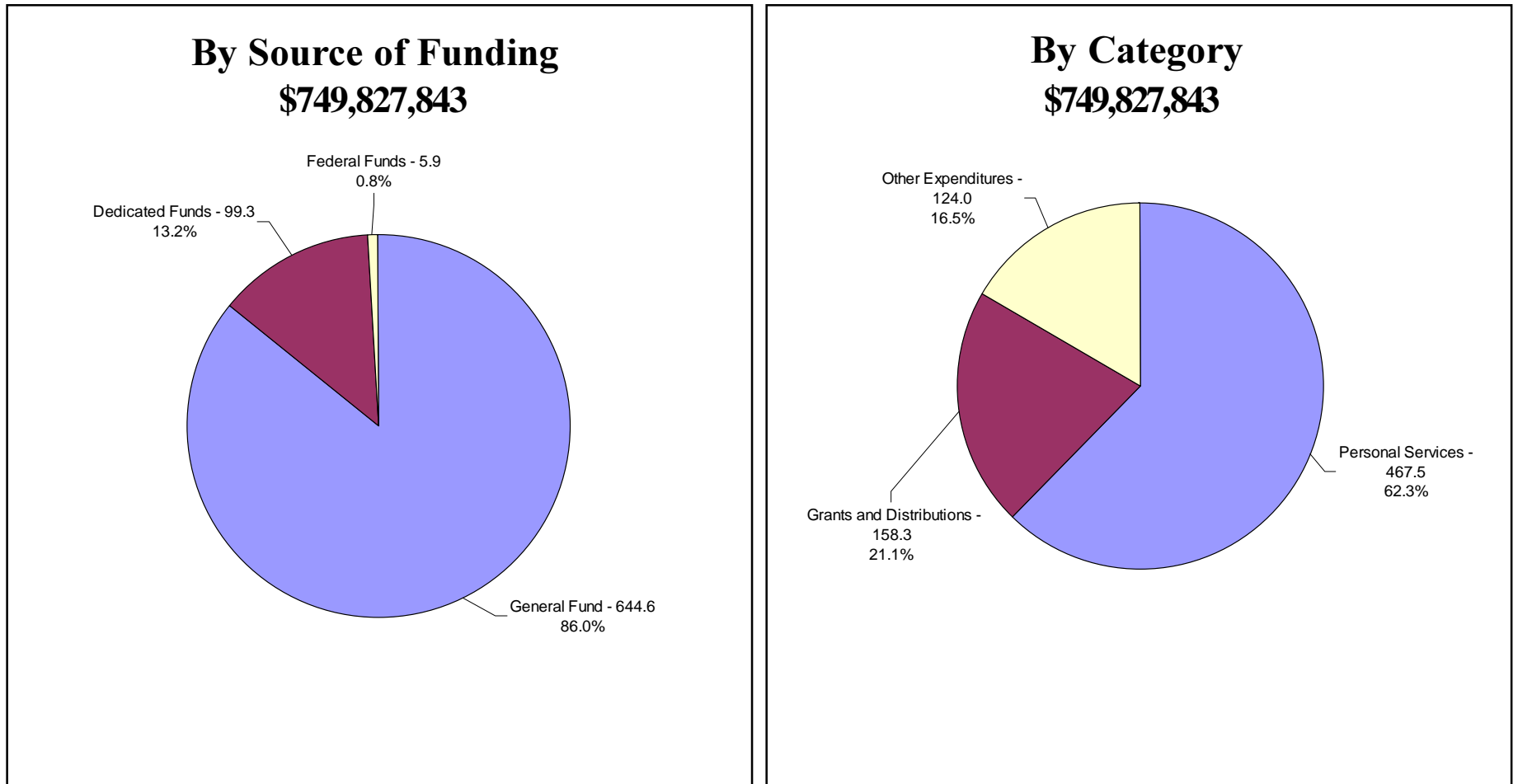
By Function
\$749,827,843



Sector Values in Millions of Dollars
 Source: Indiana State Budget Agency

RECOMMENDED OPERATING EXPENDITURES

2003-2005 Biennium



Sector Values in Millions of Dollars
Source: Indiana State Budget Agency