



Indiana State University
2019-2021 Biennial Budget Presentation

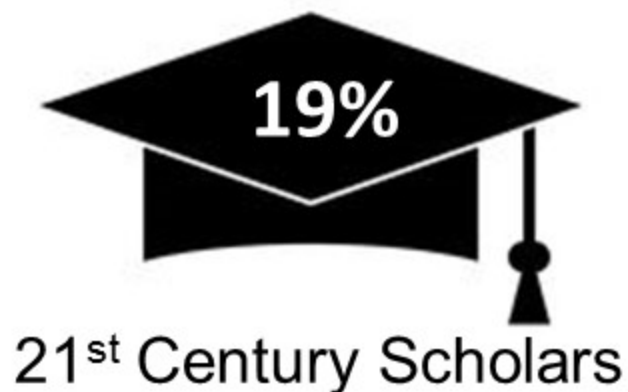
State Budget Committee

President Deborah J. Curtis

November 19, 2018



2018 Freshman Class



Indiana State is *the* State's University serving the needs of Indiana

Significant enrollment growth in last decade

2008
10,457



2018
13,045

2018 freshman class best academically prepared in recorded history

Who are our students?

Indiana State's enrollment growth has included significant increase high-achieving students

STATE's freshmen earning a high school grade point average of **3.5** or higher **31%**

Avg. high school GPA of all Indiana State students **3.17**

Students in Honors College, up **35%** since 2012 **1,000+**



Alignment of Strategic Goals



AFFORDABILITY



COMPLETION



CAREER

Aligning with State's workforce needs



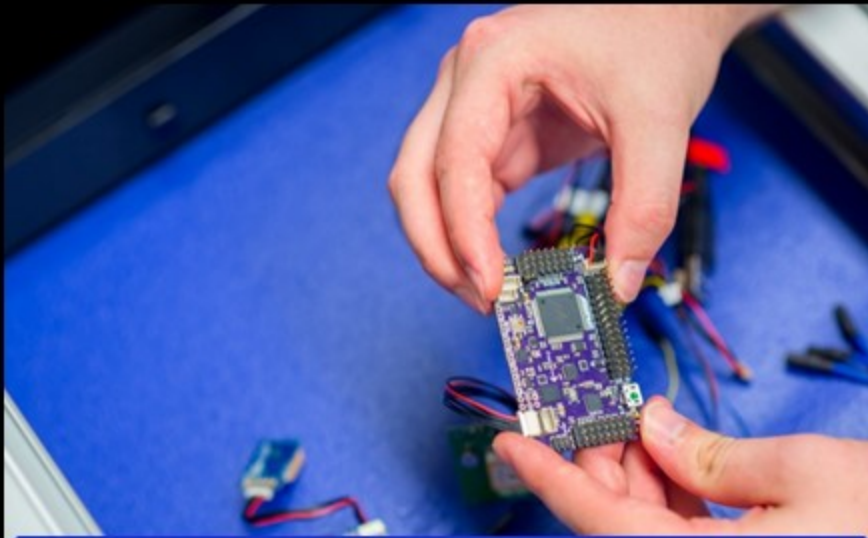
BUSINESS



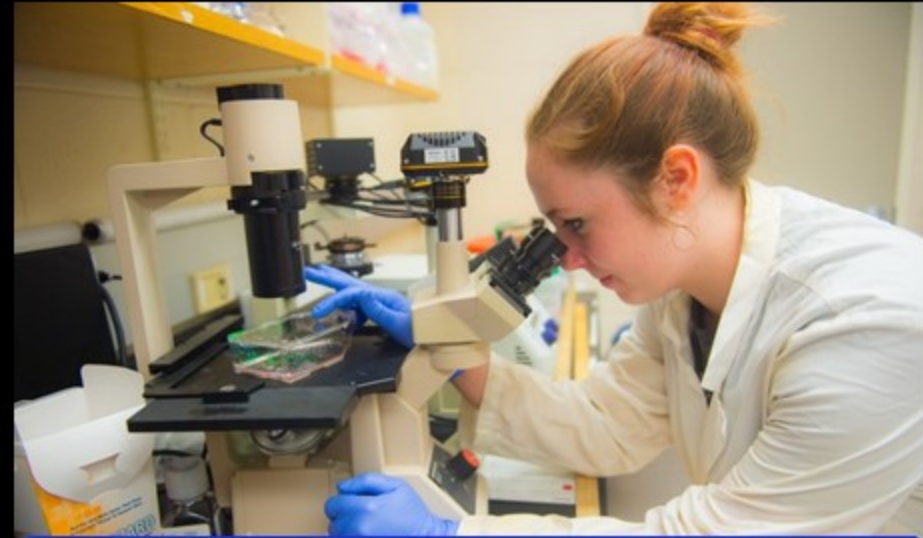
TEACHER PREPARATION



HEALTH-CARE FIELDS



TECHNOLOGY



ARTS AND SCIENCES

Aligning with State's workforce needs



Insurance and Risk Management



Teacher Education/Principal Leadership



Physical Therapy



Aviation/Professional Pilot



Construction Management



Criminology

Preparing the State's workforce



On-time grad
rate for all
students
up **9.3**
percentage
points in last
3 years

**Student Success =
Degree Completion**



21st Century Scholars outperforming other students



% earning 30+ credits

All Students	40%
21 st Century Scholars	47%

% persisting to second year

All Students	76%
21 st Century Scholars	77%

ISU's 21st Century Scholar on-time Graduation Rate has improved by 11.8 percentage points in the last five years.

Source: ICHE 2018 Indiana College Completion Report

First-Destination Survey of 2017 Grads

94%

placement rate
(employment, graduate school, military service)



- **7 out of 10** stay in Indiana to live and work
- **\$47,600** average starting salary

Sycamore Pride



Mike Alley
Chairman and Owner
Patriot Investments



Carolene Mays-Medley
Executive Director
White River State Park
Development Comm.



Brian Burton
President & CEO
Indiana Manufacturers
Association



Lea Anne Crooks
Chancellor
Ivy Tech Terre Haute



Bob Heaton
Majority Whip
Indiana House of
Representatives



Rob Baker
Kokomo Police
Chief



Eva Kor
Founder, CANDLES
Holocaust Museum



Maggie A. Lewis
Indianapolis City Council
CEO Indianapolis Boys
and Girls Club



Robert Casey
Chief Security Officer
Eli Lilly & Co.



George Pillow
President and Owner
Pillow Express

Driving economic development

\$475 million State-wide economic impact

\$300 million

Construction projects at ISU in last 10 years

5,000 jobs

Supported by ISU's economic impact

76,000 visitors

Annually to the university



- RiverFront Lofts -- Partnership between Indiana State, City of Terre Haute Department of Redevelopment, Core Redevelopment and IEDC
- Converted abandoned industrial property into riverfront housing.

Indiana State's performance on ICHE priorities

Degree Completion	FY12	FY17
1. Total degree completion	1402	1885
2. At-Risk Student On-Time Rate	12.7%	21.5%
At-Risk Degrees Conferred	436	615
Productivity Metrics		
1. On-Time Graduation Rate (IN res)	18.3%	26.9%
Indiana Residents in FTFT Freshmen Cohort	1598	2178
Persistence Success Rates		
1. 30 Credits	36.0%	50.0%
2. 60 Credits	21.9%	35.2%
3. 90 Credits	23.3%	33.7%

Progress across the board!

- Overall Degree Completion, **up 34%**
- Pell-eligible (“At-Risk”) Student Degrees Conferred, **up 41%**
- On-time Graduation Rate for Indiana residents, **up 8.6 percentage points**
- Persistence Success Rates, **up 10 to 14 percentage points**

Priorities: “Delivering Value”



Indiana State
University

1

Student Success!

2

**Economic and Workforce
Development to align
with state’s needs**

3

**Philanthropic development
to maintain commitment
to affordability**



State Capital Project: Academic Facility Renovation – Phase II



Dreiser Hall

Proposed \$18.4 million renovation

- Currently houses high-impact academic programs and experiences including **communications** classes and services, **student media, student-operated radio** stations, and a **theater**.
- Used by approximately 6,000 students each year.
- Serves as epicenter of **distance education** programs/classrooms



Increased efficiency and productivity

OPERATING APPROPRIATION



SINCE 2009 (\$11,756,684 DECLINE)

ENROLLMENT



SINCE 2009 (2,511 INCREASE)

Line-Item Requests

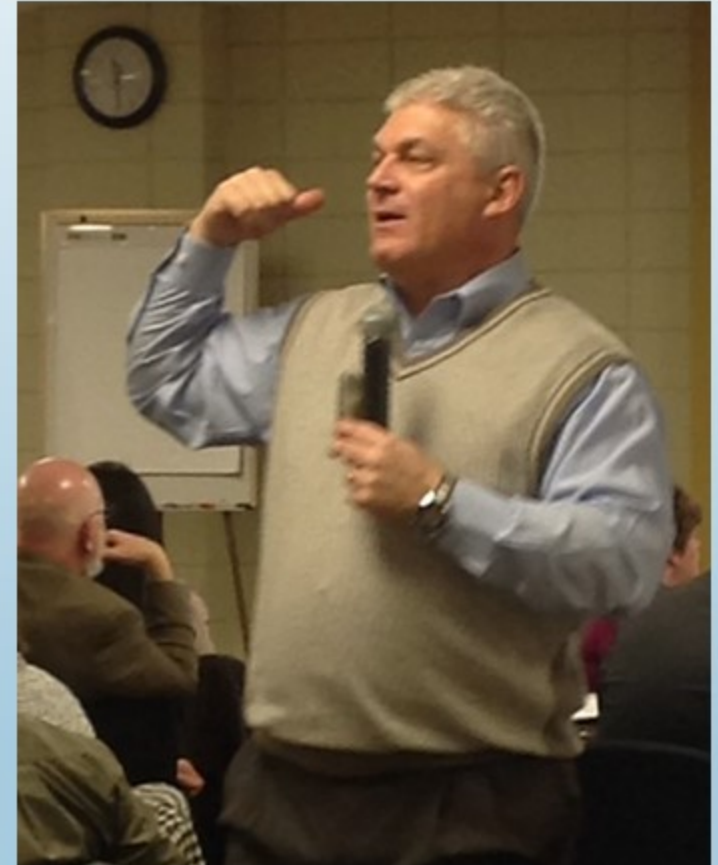
Indiana State requests a 2.5 percent increase in the following line items:



Degree Link
\$457,600



Nursing Program
\$209,100



**Indiana Principal
Leadership Institute**
\$615,000

Indiana Principal Leadership Institute



298

Principals have participated!



Created by the Indiana General Assembly in 2013
to build leadership capacity among the state's principals

- **436+** teachers have participated with their principals
- **193,061** directly impacted students in schools served by these principals
- **13,125** directly impacted teachers in schools served by these principals



Indiana State University
2019-2021 Biennial Budget Presentation

State Budget Committee

President Deborah J. Curtis

November 19, 2018

