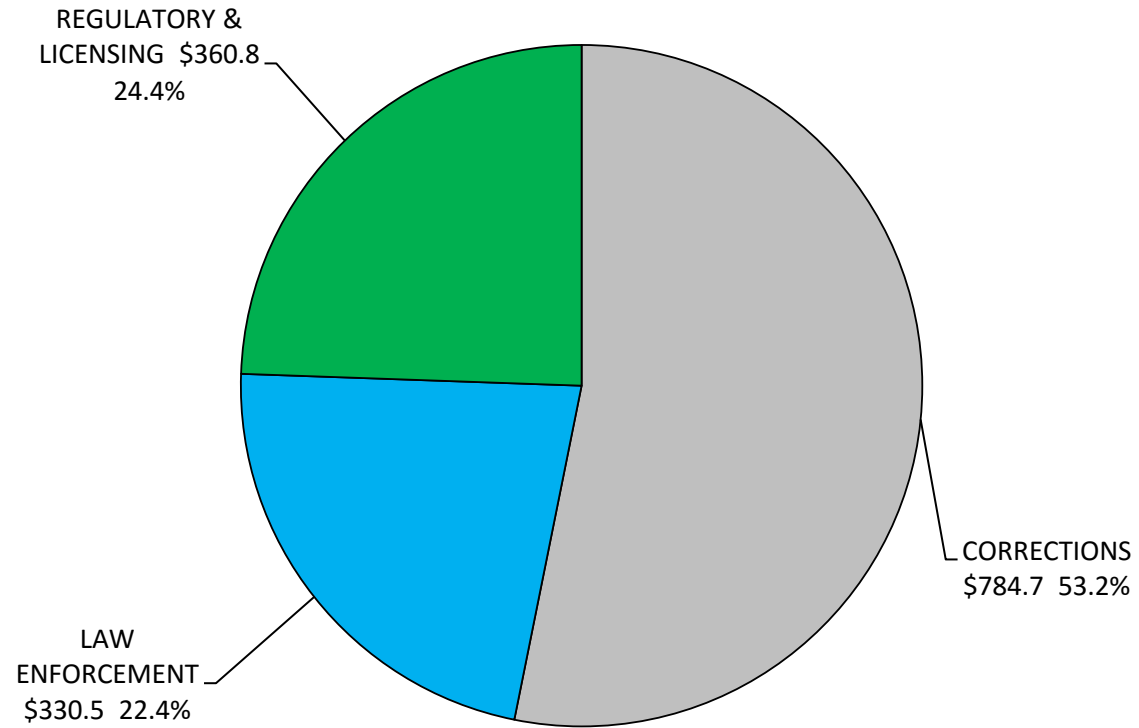


II — PUBLIC SAFETY

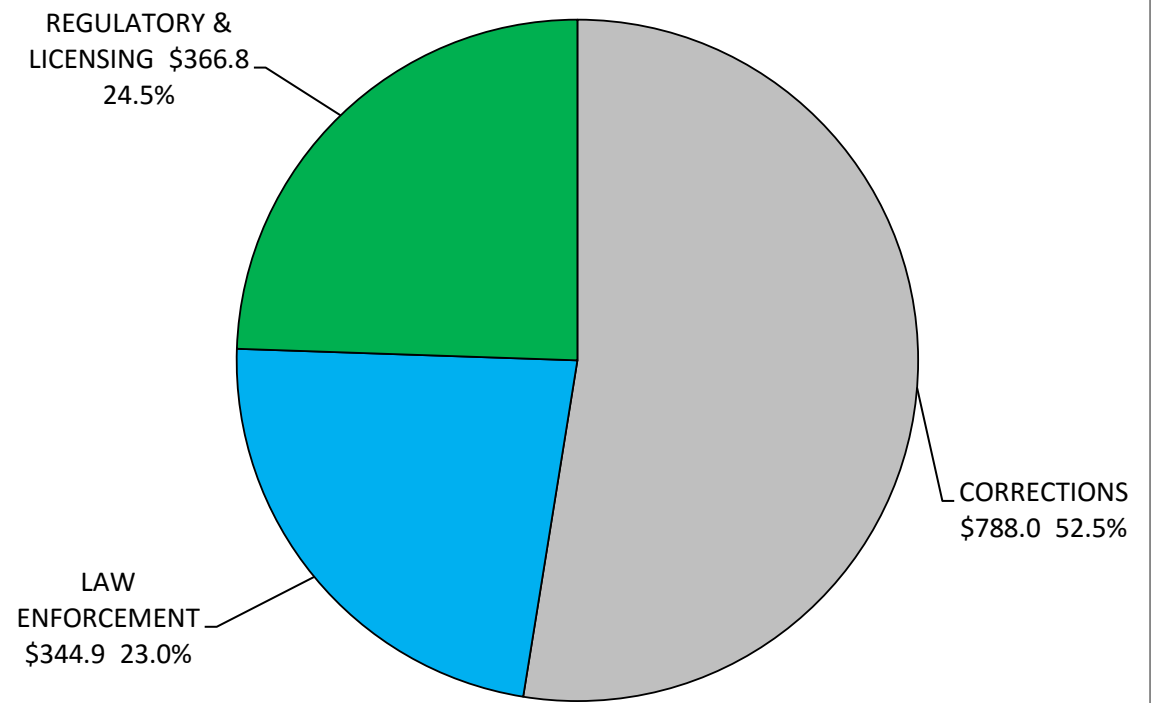
**PUBLIC SAFETY
 APPROPRIATIONS BY SUB-DIVISION SHARE
 2017-2019 BIENNIUM
 \$2,975.6 Million**

FY 2017-2018 \$1,476.0 Million



Sector Values in Millions of Dollars
 Source: Indiana State Budget Agency

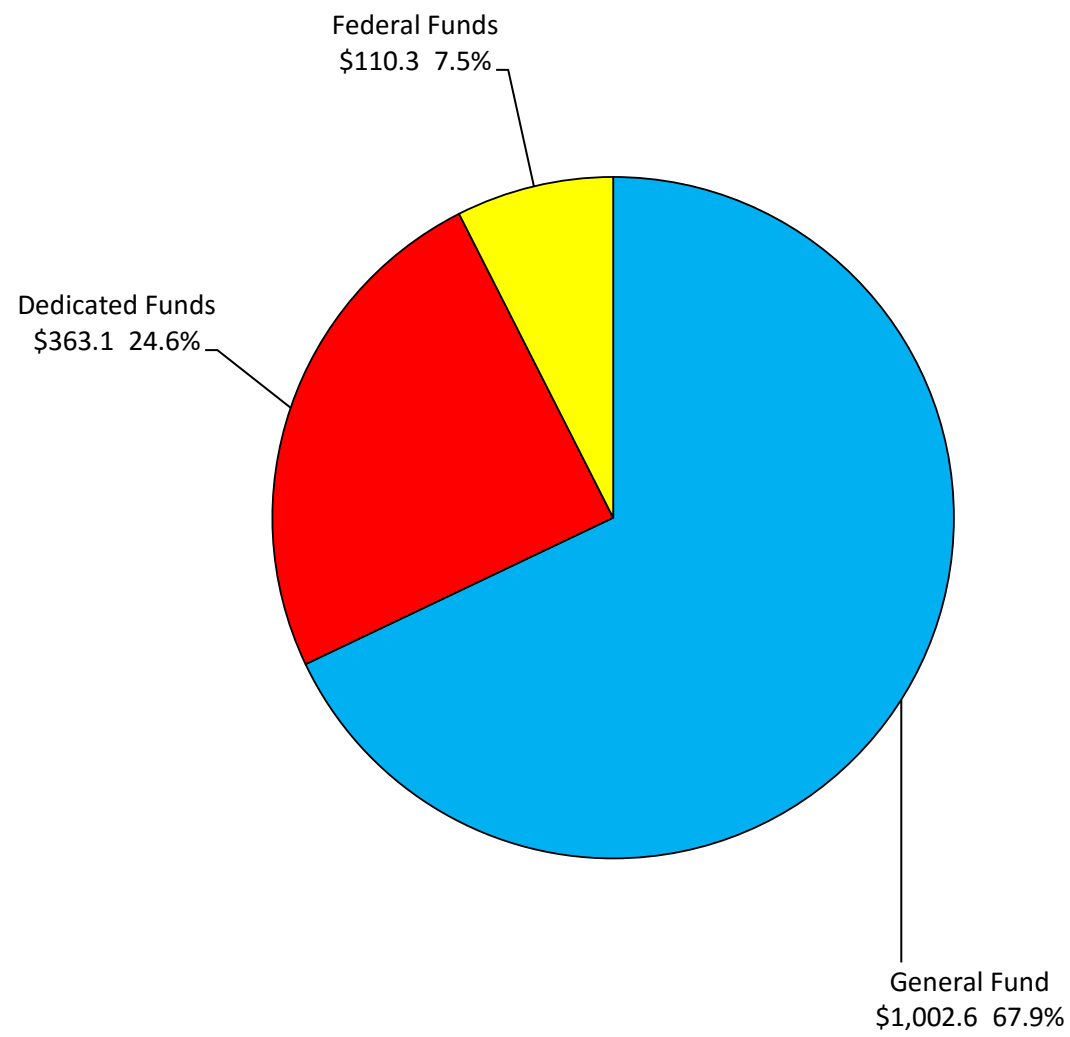
FY 2018-2019 \$1,499.6 Million



Sector Values in Millions of Dollars
 Source: Indiana State Budget Agency

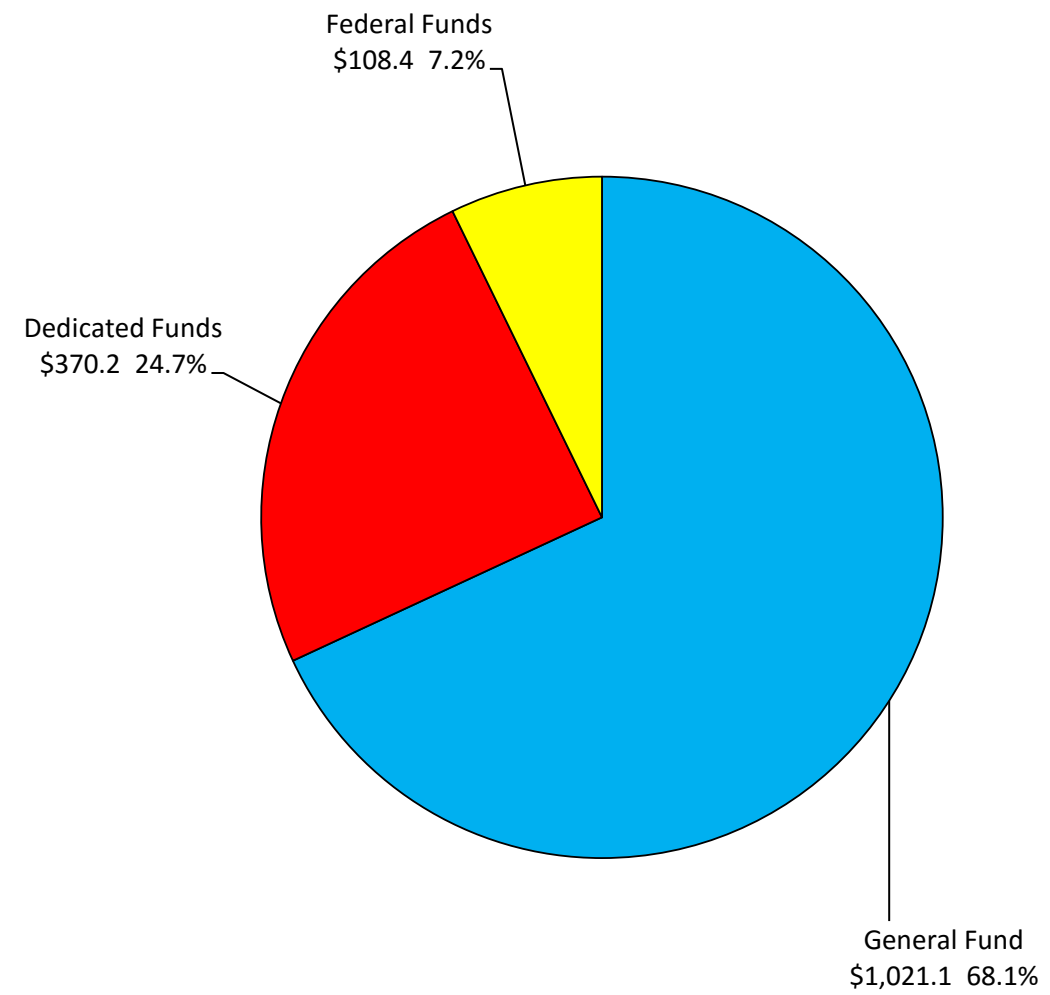
**PUBLIC SAFETY
APPROPRIATIONS BY FUND TYPE
2017-2019 BIENNIUM
\$2,975.6 Million**

FY 2017-2018 \$1,476.0 Million



Sector Values in Millions of Dollars
Source: Indiana State Budget Agency

FY 2018-2019 \$1,499.6 Million



Sector Values in Millions of Dollars
Source: Indiana State Budget Agency

Public Safety

Fund	State Agency	Appropriations	
	Appropriation Name	FY 2017-2018	FY 2018-2019
PUBLIC SAFETY			
CORRECTIONS			
Department of Correction			
Administration			
13370-057	Medical Service Payments		
	General Fund	25,000,000	25,000,000
13390-615	Escapsee Counsel and Trial Expense		
	General Fund	284,489	284,489
13400-615	County Jail Misdemeanant Housing		
	General Fund	4,152,639	4,152,639
13430-615	Food Services		
	General Fund	36,381,682	36,381,682
13460-615	Adult Contract Beds		
	General Fund	1,090,304	1,090,304
13470-615	Staff Development and Training		
	General Fund	1,589,246	1,589,246
13500-615	Central Office		
	General Fund	39,802,182	42,565,685
13510-615	Parole Board		
	General Fund	770,556	770,556
13580-615	Information Management Services		
	General Fund	1,111,542	1,111,542
13770-615	Educational Services		
	General Fund	8,782,170	8,782,170
13830-615	Juvenile Transition		
	General Fund	1,133,227	1,133,227
15360-615	Central Emergency Response		
	General Fund	1,199,273	1,199,273
16420-615	County Jail Maintenance Contingency Fund		
	General Fund	17,895,366	17,895,366
17006-615	Juvenile Detention Alternatives Initiative (JDAI)		
	General Fund	3,000,000	3,000,000
17790-615	Community Corrections Programs		
	General Fund	72,424,747	72,424,747
18790-615	Medical Services		
	General Fund	68,772,099	68,772,099
	Ded-6000-46270-Offender Medical Co-Payment	230,000	230,000
	Tfr-1000-13370-Medical Service Payments	25,000,000	25,000,000
	Total	94,002,099	94,002,099

Public Safety

Fund	State Agency Appropriation Name	Appropriations	
		FY 2017-2018	FY 2018-2019
31320-615	DOC Victim & Witness Assistance		
	Dedicated Funds	240,000	240,000
33310-615	Drug Abuse Prevention		
	Dedicated Funds	150,000	150,000
43912-615	Correctional Facilities Calling System		
	Dedicated Funds	7,600,000	7,600,000
48677-615	DOC Child Support		
	Dedicated Funds	60,000	60,000
62500-615-ABEGRANT	Adult Basic Education		
	Federal Funds	499,502	499,502
62500-615-PARTBHAN	Chapter I, Part B Handicapped		
	Federal Funds	248,998	248,998
62500-615-STATEVOC	State Vocational Reimbursement Fund		
	Federal Funds	150,000	150,000
62500-615-TITLEONE	Title I-Youth Account		
	Federal Funds	541,539	541,539
62510-615-SCAAP	State Criminal Alien Assistance Program		
	Federal Funds	554,634	554,634
62540-615	DOC DHHS Fund		
	Federal Funds	120,346	120,346
62555-615	School Food Program		
	Federal Funds	766,000	766,000
71350-515	PEN Products Operating		
	Dedicated Funds	3,757,174	3,781,953
Administration Totals			
	General Fund	283,389,522	286,153,025
	Dedicated Funds	12,037,174	12,061,953
	Federal Funds	2,881,019	2,881,019
	Total	298,307,715	301,095,997
Parole Division			
13490-621	Parole Division		
	General Fund	11,738,041	11,738,041
First Time Offenders at Heritage Trails			
13450-623	First Time Offenders Facility at Heritage Trails		
	General Fund	9,542,860	9,542,860

Public Safety

Fund	State Agency	Appropriations	
	Appropriation Name	FY 2017-2018	FY 2018-2019
South Bend Work Release Center			
41714-622	South Bend Work Release Center		
	Gen-1000-13480-Social Serv Block Grnt Title XX	2,278,033	2,278,033
	Ded-1000-17800-Work Release IC 11-10-8-6.5	350,000	350,000
	Total	2,628,033	2,628,033
Correctional Facilities			
Indiana State Prison			
13550-620	Indiana State Prison		
	General Fund	37,902,702	37,902,702
71420-515	State Prison - PEN/Industries		
	Dedicated Funds	811,771	820,129
Indiana State Prison Totals			
	General Fund	37,902,702	37,902,702
	Dedicated Funds	811,771	820,129
	Total	38,714,473	38,722,831
Pendleton Correctional Facility			
13610-630	Pendleton Correctional Facility		
	General Fund	33,997,931	33,997,931
71430-515	Pendleton Correctional Facility - PEN/Industries		
	Dedicated Funds	25,000	25,000
71520-515	Pendleton Correctional Facility - PEN/Farm		
	Dedicated Funds	10,000	10,000
Pendleton Correctional Facility Totals			
	General Fund	33,997,931	33,997,931
	Dedicated Funds	35,000	35,000
	Total	34,032,931	34,032,931
Correctional Industrial Facility			
13620-635	Correctional Industrial Facility		
	General Fund	20,996,514	20,996,514
71490-515	Correctional Industrial Facility - Food		
	Dedicated Funds	1,032,588	1,061,721
Correctional Industrial Facility Totals			
	General Fund	20,996,514	20,996,514
	Dedicated Funds	1,032,588	1,061,721
	Total	22,029,102	22,058,235

Public Safety

Fund	State Agency	Appropriations	
	Appropriation Name	FY 2017-2018	FY 2018-2019
Indiana Women's Prison			
13640-640	Indiana Women's Prison		
	General Fund	11,929,006	11,929,006
Putnamville Correctional Facility			
13670-650	Putnamville Correctional Facility		
	General Fund	31,349,510	31,349,510
71440-515	Putnamville Correctional Facility - PEN/Industries		
	Dedicated Funds	210,695	211,479
Putnamville Correctional Facility Totals			
	General Fund	31,349,510	31,349,510
	Dedicated Funds	210,695	211,479
	Total	31,560,205	31,560,989
Wabash Valley Correctional Facility			
13730-665	Wabash Valley Correctional Facility		
	General Fund	40,019,290	40,019,290
71470-515	Wabash Valley Correctional Facility - PEN		
	Dedicated Funds	3,412,946	3,101,130
Wabash Valley Correctional Facility Totals			
	General Fund	40,019,290	40,019,290
	Dedicated Funds	3,412,946	3,101,130
	Total	43,432,236	43,120,420
Indianapolis Re-Entry Education Facility			
13710-660	Indianapolis Re-Entry Education Facility		
	General Fund	7,202,026	7,202,026
Branchville Correctional Facility			
13760-675	Branchville Correctional Facility		
	General Fund	17,342,954	17,342,954
71480-515	Branchville Correctional Facility - PEN/Industries		
	Dedicated Funds	496,301	498,148
Branchville Correctional Facility Totals			
	General Fund	17,342,954	17,342,954
	Dedicated Funds	496,301	498,148
	Total	17,839,255	17,841,102

Public Safety

Fund	State Agency	Appropriations	
	Appropriation Name	FY 2017-2018	FY 2018-2019
Westville Correctional Facility			
13780-680	Westville Correctional Facility		
	General Fund	45,984,647	45,984,647
71460-515	Westville Correctional Facility - PEN/Industries		
	Dedicated Funds	1,107,954	1,145,332
<hr/>			
Westville Correctional Facility Totals			
	General Fund	45,984,647	45,984,647
	Dedicated Funds	1,107,954	1,145,332
<hr/>			
	Total	47,092,601	47,129,979
Rockville Correctional Facility for Women			
13810-685	Rockville Correctional Facility for Women		
	General Fund	16,082,152	16,082,152
71500-515	Rockville Correctional Facility - PEN/Industries		
	Dedicated Funds	241,301	248,692
<hr/>			
Rockville Correctional Facility for Women Totals			
	General Fund	16,082,152	16,082,152
	Dedicated Funds	241,301	248,692
<hr/>			
	Total	16,323,453	16,330,844
Plainfield Correctional Facility			
13840-690	Plainfield Correctional Facility		
	General Fund	23,377,780	23,377,780
71380-515	Plainfield Correctional Facility - PEN/Industries		
	Dedicated Funds	1,360,515	1,408,554
71400-515	Commissary		
	Dedicated Funds	19,543,824	20,072,343
<hr/>			
Plainfield Correctional Facility Totals			
	General Fund	23,377,780	23,377,780
	Dedicated Funds	20,904,339	21,480,897
<hr/>			
	Total	44,282,119	44,858,677
Reception and Diagnostic Center			
13850-695	Reception and Diagnostic Center		
	General Fund	13,951,007	13,951,007

Public Safety

Fund	State Agency Appropriation Name	Appropriations	
		FY 2017-2018	FY 2018-2019
Miami Correctional Facility			
13600-618	Miami Correctional Facility		
	General Fund	33,685,587	33,685,587
71540-515	Miami Correctional Facility - PEN/Industries		
	Dedicated Funds	4,517,397	4,706,969
<hr/>			
Miami Correctional Facility Totals			
	General Fund	33,685,587	33,685,587
	Dedicated Funds	4,517,397	4,706,969
<hr/>			
	Total	38,202,984	38,392,556
New Castle Correctional Facility			
13650-645	New Castle Correctional Facility		
	General Fund	41,130,553	41,130,553
<hr/>			
Correctional Facilities Totals			
	General Fund	374,951,659	374,951,659
	Dedicated Funds	32,770,292	33,309,497
<hr/>			
	Total	407,721,951	408,261,156
Correctional Units			
13520-614	Chain O' Lakes Correctional Facility		
	General Fund	1,666,622	1,666,622
13740-667	Madison Correctional Facility		
	General Fund	9,115,985	9,115,985
13860-697	Edinburgh Correctional Facility		
	General Fund	4,208,399	4,208,399
<hr/>			
Correctional Units Totals			
	General Fund	14,991,006	14,991,006
Juvenile Residential			
13700-616	North Central Juvenile Correctional Facility		
	General Fund	12,266,263	12,266,263
13720-661	Camp Summit		
	General Fund	3,880,234	3,880,234
13680-655	Pendleton Juvenile Correctional Facility		
	General Fund	17,277,135	17,277,135
14535-672	Madison Juvenile Correctional Facility		
	General Fund	6,156,907	6,156,907
<hr/>			
Juvenile Residential Totals			
	General Fund	39,580,539	39,580,539

Public Safety

Fund	State Agency Appropriation Name	Appropriations	
		FY 2017-2018	FY 2018-2019
Department of Correction Totals			
	General Fund	736,471,660	739,235,163
	Dedicated Funds	45,157,466	45,721,450
	Federal Funds	2,881,019	2,881,019
	Total	784,510,145	787,837,632
Other Correction			
Department of Administration			
11640-061	Department of Correction Ombudsman Bureau		
	General Fund	146,644	146,644
CORRECTIONS TOTALS			
	General Fund	736,618,304	739,381,807
	Dedicated Funds	45,157,466	45,721,450
	Federal Funds	2,881,019	2,881,019
	Total	784,656,789	787,984,276
LAW ENFORCEMENT			
State Police			
12755-100	Indiana Intelligence Fusion Center		
	General Fund	1,372,939	1,372,939
13076-100	ISP OPEB Contribution		
	General Fund	13,350,700	12,575,902
13117-100	Forensic and Health Sciences Laboratories		
	General Fund	11,317,003	11,317,003
	Ded-2270-32830-Motor Carrier Regulation Fund	398,320	398,320
	Total	11,715,323	11,715,323
14900-100	Indiana State Police and Motor Carrier Inspection		
	General Fund	119,097,359	119,097,359
	Ded-2270-32830-Motor Carrier Regulation Fund	4,191,833	4,191,833
	Tfr-6000-47410-Excess Handgun License Fees	2,498,434	2,498,434
	Total	125,787,626	125,787,626
14910-100	Pension Fund		
	General Fund	20,650,000	24,150,000
14920-100	Supplemental Pension		
	General Fund	3,125,000	3,125,000
14990-100	Benefit Fund		
	General Fund	5,500,000	5,600,000

Public Safety

Fund	State Agency Appropriation Name	Appropriations	
		FY 2017-2018	FY 2018-2019
15158-100	ISP Salary Matrix Adjustment		
	General Fund	8,676,646	20,823,950
16720-100	Enforcement Aid		
	General Fund	72,518	72,518
17025-100	Motor Carrier Inspector Salary Matrix Adjustment		
	General Fund	208,488	500,370
17027-100	Capitol Police Salary Matrix Adjustment		
	General Fund	291,582	699,798
32210-100	State Police Training		
	Dedicated Funds	500,000	500,000
32720-100	Odometer Fraud Investigation		
	Dedicated Funds	94,200	94,200
33210-100	Drug Interdiction		
	Dedicated Funds	208,550	208,550
38110-100	Accident Reporting		
	Dedicated Funds	5,000	5,000
44180-100	Project Income/Grant		
	Dedicated Funds	850,180	850,180
44470-100	Fingerprint (FBI Print)		
	Dedicated Funds	1,400,000	1,400,000
44510-100	Donation Not For Profits		
	Dedicated Funds	3,000,000	3,000,000
44860-100	US Attorney General Forfeited		
	Dedicated Funds	963,650	963,650
47410-100	Excess Handgun License Fees		
	Dedicated Funds	3,727,134	3,727,134
48360-100	DNA Sample Processing Fund		
	Dedicated Funds	1,312,304	1,312,304
48450-100	ISP Youth Education, Museum & Memorial		
	Dedicated Funds	182,351	182,351
60800-100	Criminal Justice Planning		
	Ded-6000-44860-US Attorney General Forfeited	85,546	85,546
	Transferred Funds	342,185	342,185
	Total	427,731	427,731
60800-100-CANNABIS	Marijuana Eradication		
	Federal Funds	408,000	408,000
60800-100-CHLDCRME	Crimes Against Children Program		
	Federal Funds	387,423	387,423
60800-100-DRUGGRNT	Drug Enforcement Grant		
	Transferred Funds	273,980	273,980

Public Safety

Fund	State Agency Appropriation Name	Appropriations	
		FY 2017-2018	FY 2018-2019
60800-100-FORENSIC	Forensic Science		
	Federal Funds	728,110	728,110
	Transferred Funds	80,770	80,770
	Total	808,880	808,880
60800-100-METHGRNT	Meth Suppression Grant		
	Federal Funds	567,000	567,000
	Transferred Funds	393,806	393,806
	Total	960,806	960,806
60810-100-ACCIDENT	Fatal Accident Reporting System		
	Federal Funds	142,500	142,500
60810-100-ISPMCSAP	Motor Carrier Safety Assistance Program		
	Federal Funds	5,791,998	5,791,998
	Transferred Funds	1,447,999	1,447,999
	Total	7,239,997	7,239,997
60810-100-NEWENTRN	Motor Carrier Safety Assistance Program New Entrant		
	Federal Funds	889,335	889,335
60810-100-TRAFSAFE	Traffic Safety		
	Transferred Funds	1,166,000	1,166,000
60820-100-FUSNCNTR	Fusion Center		
	Transferred Funds	199,458	199,458
71671-100	ISP Aviation Rotary Fund		
	Dedicated Funds	202,950	202,950
State Police Totals			
	General Fund	183,662,235	199,334,839
	Dedicated Funds	17,122,018	17,122,018
	Federal Funds	8,914,366	8,914,366
	Total	209,698,619	225,371,223
Adjutant General			
10495-110	Camp Atterbury Muscatatuck Center for Complex Operations		
	General Fund	577,191	577,191
11030-110	Adjutant General		
	General Fund	7,509,573	7,509,573
11080-110	Disabled Soldiers' Pension		
	General Fund	1	1
15250-110	MUTC - Muscatatuck Urban Training Center		
	General Fund	933,306	933,306
	Fed-8012-60900-Department of Defense	1,385,381	1,385,381
	Total	2,318,687	2,318,687
15260-110	Hoosier Youth Challenge Academy		
	General Fund	2,438,850	2,438,850

Public Safety

Fund	State Agency Appropriation Name	Appropriations	
		FY 2017-2018	FY 2018-2019
18213-110	Governor's Civil and Military Contingency Fund		
	General Fund	119,004	119,004
47945-110	AGO Asset Forfeiture & Seizure		
	Dedicated Funds	10,000	10,000
60900-110-APPENDX1	Advance Appendix 1 - Real Property Operations and Maintenance		
	Federal Funds	20,135,887	20,135,887
	Tfr-1000-11030-Adjutant General	3,946,727	3,946,727
	Total	24,082,614	24,082,614
60900-110-APPENDX2	Advance Appendix 2 - Environmental		
	Federal Funds	1,188,000	1,188,000
60900-110-APPENDX3	Advance Appendix 3 - Physical Security		
	Federal Funds	2,021,992	2,021,992
60900-110-APPENDX4	Advance Appendix 4 - Electronic Security		
	Federal Funds	444,768	444,768
60900-110-APPENDX5	Advance Appendix 5 - Telecommunications		
	Federal Funds	1,991,111	1,991,111
	Tfr-1000-11030-Adjutant General	26,333	26,333
	Total	2,017,444	2,017,444
60900-110-APPENDX7	Advance Appendix 7 - Range and Training Land Program		
	Federal Funds	1,780,000	1,780,000
60900-110-APPENDX10	Advance Appendix 10 - Anti-Terrorism		
	Federal Funds	85,000	85,000
60900-110-APPENDX11	Advance Appendix 11 - Emergency Management		
	Federal Funds	80,000	80,000
60900-110-APPENDX40	Advance Appendix 40 - Distance Learning Center		
	Federal Funds	234,800	234,800
60900-110-BAERCOOP	Baer Field Federal Coop Agreement		
	Federal Funds	3,393,570	3,393,570
	Tfr-1000-11030-Adjutant General	441,926	441,926
	Total	3,835,496	3,835,496
60900-110-CNSTRCTN	Major Construction Cooperative Agreements		
	Federal Funds	5,734,681	5,734,681
60900-110-HLMNCOOP	Hulman Field Federal Coop Agreement		
	Federal Funds	2,069,516	2,069,516
	Tfr-1000-11030-Adjutant General	431,421	431,421
	Total	2,500,937	2,500,937
60900-110-HYCACOOP	Hoosier Youth Challenge Academy		
	Federal Funds	3,195,001	3,195,001
	Tfr-1000-15260-Hoosier Youth Challenge Academy	1,064,999	1,064,999
	Total	4,260,000	4,260,000

Public Safety

Fund	State Agency Appropriation Name	Appropriations	
		FY 2017-2018	FY 2018-2019
60900-110-STARBASE	Advance Appendix 4002 - Starbase		
	Federal Funds	681,000	681,000
60910-110	State Active Duty FEMA Reimbursement		
	Federal Funds	60,000	60,000
Adjutant General Totals			
	General Fund	11,577,925	11,577,925
	Dedicated Funds	10,000	10,000
	Federal Funds	44,480,707	44,480,707
	Total	56,068,632	56,068,632
Criminal Justice Institute			
15150-032	Criminal Justice Institute - Admin. Match		
	General Fund	402,002	402,002
	Tfr-2090-31310-Victim and Witness Assistance Fund	396,617	396,617
	Tfr-2540-34510-State Drug Free Communities Fund	260,013	260,013
	Tfr-2780-36310-Indiana Safe Schools Fund	86,244	86,244
	Tfr-3180-38410-Violent Crime Victims Compensation Fund	55,926	55,926
	Tfr-3320-39010-Domestic Violence Prevention and Treatment F	55,560	55,560
	Tfr-8016-60100-Department of Justice	1,695,522	1,695,522
	Tfr-8020-60110-Department of Transportation	824,627	824,627
	Tfr-8093-60117-Department of Health and Human Services	60,545	60,545
	Total	3,837,056	3,837,056
15171-032	Enhanced Enforcement Drug Mitigation Area Pilot Program		
	General Fund	250,000	250,000
16870-032	Drug Enforcement Match		
	General Fund	869,347	869,347
16950-032	Child Restraint System Fund		
	Dedicated Funds	145,500	145,500
17120-032	Sexual Assault Victims' Assistance		
	General Fund	1,500,000	1,500,000
	Dedicated Funds	25,000	25,000
	Total	1,525,000	1,525,000
31310-032	Victim and Witness Assistance Fund		
	Dedicated Funds	723,609	723,609
32610-032	Alcohol and Drug Countermeasures		
	Dedicated Funds	337,765	337,765
34510-032	State Drug Free Communities Fund		
	Dedicated Funds	560,662	560,662

Public Safety

Fund	State Agency Appropriation Name	Appropriations	
		FY 2017-2018	FY 2018-2019
36310-032	Indiana Safe Schools		
	Gen-1000-14870-Indiana Safe Schools	1,095,340	1,095,340
	Dedicated Funds	400,053	400,053
	Total	1,495,393	1,495,393
38410-032	Victims of Violent Crime Administration		
	Gen-1000-15264-State Supplement to SSBG CJJ	636,763	636,763
	Dedicated Funds	2,562,000	2,562,000
	Total	3,198,763	3,198,763
39010-032	Domestic Violence Prevention and Treatment		
	Gen-1000-11590-Domest Violnce Prev & Trtmnt Pr	5,000,000	5,000,000
	Dedicated Funds	1,064,334	1,064,334
	Total	6,064,334	6,064,334
44295-032	Ford Driving Skills for Life		
	Dedicated Funds	12,566	12,566
44297-032	Third Party Grant Fund		
	Dedicated Funds	14,459	14,459
60100-032-BYRNEJAG	Justice Assistance Grant		
	Federal Funds	3,574,418	3,574,418
60100-032-CJIOJJDP	Office of Juvenile Justice and Delinquency Prevention		
	Federal Funds	549,682	549,682
60100-032-ICJIRSAT	Residential Substance Abuse Treatment		
	Federal Funds	121,290	121,290
60100-032-STOPVAWA	Stop Violence Against Women Formula		
	Federal Funds	2,523,480	2,523,480
60100-032-VCTMASST	Victim Assistance Formula Grant Program		
	Federal Funds	8,643,197	8,643,197
60110-032-CJINHTSA	Highway Passenger & Commercial Vehicle Grant		
	Gen-1000-13118-Office of Traffic Safety	507,633	507,633
	Federal Funds	10,572,365	10,572,365
	Total	11,079,998	11,079,998
60117-032-FAMVLNCE	Federal Family Violence		
	Federal Funds	1,870,151	1,870,151
60117-032-ICJISSBG	SSBG - Criminal Justice Institute		
	Federal Funds	485,000	485,000
Criminal Justice Institute Totals			
	General Fund	10,261,085	10,261,085
	Dedicated Funds	5,845,948	5,845,948
	Federal Funds	28,339,583	28,339,583
	Total	44,446,616	44,446,616

Public Safety

Fund	State Agency	Appropriations	
	Appropriation Name	FY 2017-2018	FY 2018-2019
Law Enforcement Training Academy			
38920-103	Law Enforcement Training Academy		
	Gen-1000-10870-Law Enforcement Training Acadmy	1,927,671	1,927,671
	Dedicated Funds	2,125,467	2,125,467
	Total	4,053,138	4,053,138
Coroners' Training Board			
36110-240	Coroners' Training Board		
	Dedicated Funds	388,000	388,000
Integrated Public Safety Commission			
37110-286	Integrated Public Safety Commission - Project SAFE-T		
	Dedicated Funds	11,874,947	11,874,947
61560-286	National Public Safety Broadband Network		
	Federal Funds	1,311,456	0
Integrated Public Safety Commission Totals			
	Dedicated Funds	11,874,947	11,874,947
	Federal Funds	1,311,456	0
	Total	13,186,403	11,874,947
Toxicology			
11505-115	State Department of Toxicology		
	General Fund	2,344,728	2,344,728
	Tfr-6000-44271-Breath Test Train & Certificat	355,000	355,000
	Total	2,699,728	2,699,728
44271-115	State Department of Toxicology		
	Dedicated Funds	355,000	355,000
Toxicology Totals			
	General Fund	2,344,728	2,344,728
	Dedicated Funds	355,000	355,000
	Total	2,699,728	2,699,728
LAW ENFORCEMENT TOTALS			
	General Fund	209,773,644	225,446,248
	Dedicated Funds	37,721,380	37,721,380
	Federal Funds	83,046,112	81,734,656
	Total	330,541,136	344,902,284

Public Safety

Fund	State Agency	Appropriations	
	Appropriation Name	FY 2017-2018	FY 2018-2019
REGULATORY & LICENSING			
Motor Vehicles			
Bureau of Motor Vehicles			
13077-235	Bureau of Motor Vehicles		
	General Fund	27,946,884	27,946,884
13119-235	License Plates		
	Ded-3590-40910-Motor Vehicle Commission Fund	8,605,503	14,205,503
36510-235	Financial Responsibility Compliance Verification		
	Dedicated Funds	6,183,531	6,183,531
43210-235	Motorcycle Operator Safety		
	Dedicated Funds	1,080,251	1,080,251
50210-235	State Motor Vehicle Technology		
	Dedicated Funds	4,950,726	4,950,726
	Transferred Funds	4,796,595	4,796,595
	Total	9,747,321	9,747,321
61325-235	BMV - DHS Fund		
	Federal Funds	521,680	0
Bureau of Motor Vehicles Totals			
	General Fund	27,946,884	27,946,884
	Dedicated Funds	20,820,011	26,420,011
	Federal Funds	521,680	0
	Total	49,288,575	54,366,895
Bureau of Motor Vehicles Commission			
40910-340	License Branches		
	Dedicated Funds	83,893,560	83,893,560
Motor Vehicles Totals			
	General Fund	27,946,884	27,946,884
	Dedicated Funds	104,713,571	110,313,571
	Federal Funds	521,680	0
	Total	133,182,135	138,260,455
Department of Labor			
11960-225	Department of Labor		
	General Fund	792,476	792,476
	Tfr-8017-61300-Department of Labor	211,557	211,557
	Total	1,004,033	1,004,033

Public Safety

Fund	State Agency Appropriation Name	Appropriations	
		FY 2017-2018	FY 2018-2019
11980-225	Bureau of Mines and Mining		
	General Fund	203,368	203,368
12000-225	Quality, Metrics, and Statistics (MIS)		
	General Fund	120,794	120,794
15110-225	Occupational Safety and Health		
	General Fund	2,210,830	2,210,830
35510-225	Employment of Youth		
	Dedicated Funds	162,791	162,791
40810-225	INSafe		
	Dedicated Funds	384,260	384,260
61300-225-21D	21D Grant		
	Federal Funds	866,400	866,400
	Transferred Funds	384,260	384,260
	Total	1,250,660	1,250,660
61300-225-23G	OSHA		
	Federal Funds	2,263,400	2,263,400
	Tfr-1000-15110-Occupational Health & Safety	2,210,830	2,210,830
	Total	4,474,230	4,474,230
61300-225-OSHS	OSHS Grant		
	Federal Funds	119,464	119,464
	Tfr-1000-12000-M.I.S. Proj Stat(Tfr)	120,794	120,794
	Total	240,258	240,258
Department of Labor Totals			
	General Fund	3,327,468	3,327,468
	Dedicated Funds	547,051	547,051
	Federal Funds	3,249,264	3,249,264
	Total	7,123,783	7,123,783
Department of Insurance			
36410-210	Department of Insurance - Operating		
	Dedicated Funds	6,556,881	6,556,881
37920-210	Bail Bond Division		
	Dedicated Funds	131,607	131,607
48810-210	Patients' Compensation Fund		
	Dedicated Funds	100,000,000	100,000,000
48820-210	Patients' Compensation Authority		
	Dedicated Funds	1,503,040	1,503,040
50910-210	Political Subdivision Risk Management		
	Dedicated Funds	119,932	119,932
51020-210	Mine Subsidence Insurance		
	Dedicated Funds	637,758	637,758

Public Safety

Fund	State Agency	Appropriations	
	Appropriation Name	FY 2017-2018	FY 2018-2019
54510-210	Title Insurance Enforcement Operating		
	Dedicated Funds	896,752	896,752
61200-210	Ind. Dept. of Insurance/U.S. Dept. of Health and Human Services		
	Federal Funds	1,288,168	1,288,168
<hr/>			
Department of Insurance Totals			
	Dedicated Funds	109,845,970	109,845,970
	Federal Funds	1,288,168	1,288,168
<hr/>			
	Total	111,134,138	111,134,138
<hr/>			
Alcohol and Tobacco Commission			
37620-230	Alcohol and Tobacco Commission		
	Dedicated Funds	11,784,695	11,784,695
	Tfr-3230-38610-Addiction Services Fund	250,000	250,000
<hr/>			
	Total	12,034,695	12,034,695
37620-230-OPEB	ATC OPEB Contribution		
	Dedicated Funds	438,593	410,537
37630-230	ATC Salary Matrix Adjustment		
	Dedicated Funds	606,318	1,455,164
47530-230	Youth Tobacco Education and Enforcement		
	Dedicated Funds	85,704	85,704
<hr/>			
Alcohol and Tobacco Commission Totals			
	Dedicated Funds	12,915,310	13,736,100
<hr/>			
Department of Financial Institutions			
39220-208	Department of Financial Institutions		
	Dedicated Funds	8,139,057	8,179,604
<hr/>			
Professional Licensing Agency			
12030-250	Professional Licensing Agency		
	General Fund	4,785,153	4,785,153
	Tfr-1000-17130-Impaired Nurses Program	285,308	285,308
	Tfr-1000-17350-Impaired Pharmacists	131,830	131,830
	Tfr-1000-18010-Architect and Landscape Archt	10,668	10,668
	Tfr-2910-30810-Dental Compliance Fund	59,624	59,624
	Tfr-6000-45290-Controlled Substances Data Fund	464,285	464,285
	Tfr-6000-47350-Investigative Fund	70,150	70,150
	Tfr-6000-47355-Accountant Investigative Fund	62,266	62,266
	Tfr-8093-61390-Department of Health and Human Services	48,220	48,220
<hr/>			
	Total	5,917,504	5,917,504
17130-250	Impaired Nurses Program		
	Dedicated Funds	910,361	910,361

Public Safety

Fund	State Agency Appropriation Name	Appropriations	
		FY 2017-2018	FY 2018-2019
17350-250	Impaired Pharmacists Account		
	Dedicated Funds	208,735	208,735
30810-250	Dental Profession Investigation		
	Dedicated Funds	107,419	107,419
30910-250	Physician Investigation		
	Dedicated Funds	8,000	8,000
32510-250	Recovery Auctioneer		
	Dedicated Funds	19,400	19,400
35610-250	Preneed Consumer Protection		
	Dedicated Funds	48,500	48,500
40310-250	Board of Funeral and Cemetery Service		
	Dedicated Funds	250	250
45290-250	Controlled Substances Data Fund (INSPECT)		
	Dedicated Funds	684,273	684,273
47340-250	Real Estate Appraiser Federal Registration Fee		
	Dedicated Funds	70,000	70,000
47350-250	Investigative Fund		
	Dedicated Funds	95,758	95,758
47355-250	Accountant Investigative Fund		
	Dedicated Funds	78,829	78,829
<hr/>			
Professional Licensing Agency Totals			
	General Fund	4,785,153	4,785,153
	Dedicated Funds	2,231,525	2,231,525
	Total	7,016,678	7,016,678

Civil Rights Commission

12080-258	Civil Rights Commission		
	General Fund	1,776,865	1,776,865
12081-258	Commission on Hispanic/Latino Affairs		
	General Fund	102,432	102,432
12082-258	Women's Commission		
	General Fund	98,115	98,115
12083-258	Native American Indian Affairs Commission		
	General Fund	74,379	74,379
12084-258	Commission on the Social Status of Black Males		
	General Fund	135,431	135,431
17100-258	Martin Luther King Jr. Holiday Commission		
	General Fund	19,400	19,400
45870-258	ICRC Workshops		
	Dedicated Funds	8,354	8,354

Public Safety

Fund	State Agency Appropriation Name	Appropriations	
		FY 2017-2018	FY 2018-2019
47951-258	Indiana Native American Affairs Trust Fund		
	Dedicated Funds	7,348	7,348
61400-258-FAIRHOUS	2000 Fair Housing Improvement Program Grant		
	Federal Funds	644,022	644,022
61401-258	CRC EEOC Fund		
	Federal Funds	407,952	407,952
Civil Rights Commission Totals			
	General Fund	2,206,622	2,206,622
	Dedicated Funds	15,702	15,702
	Federal Funds	1,051,974	1,051,974
	Total	3,274,298	3,274,298
Utility Consumer Counselor			
38550-205	Gas Cost Adjustment Settlement		
	Dedicated Funds	97,000	97,000
38560-205	Utility Consumer Counselor		
	Dedicated Funds	6,512,777	6,512,777
38570-205	Expert Witness Fees and Audit		
	Dedicated Funds	839,678	839,678
Utility Consumer Counselor Totals			
	Dedicated Funds	7,449,455	7,449,455
Utility Regulatory Commission			
38520-200	Utility Regulatory Commission		
	Dedicated Funds	9,406,819	9,406,819
48691-200	Underground Plant Protection Account		
	Dedicated Funds	971,720	971,720
61100-200	Natural Gas Base Grant		
	Federal Funds	1,112,624	1,112,624
	Transferred Funds	561,000	561,000
	Total	1,673,624	1,673,624
Utility Regulatory Commission Totals			
	Dedicated Funds	10,378,539	10,378,539
	Federal Funds	1,112,624	1,112,624
	Total	11,491,163	11,491,163

Public Safety

Fund	State Agency Appropriation Name	Appropriations	
		FY 2017-2018	FY 2018-2019
Worker's Compensation Board			
11940-220	Worker's Compensation Board		
	General Fund	1,917,186	1,917,186
	Tfr-6000-48270-Second Injury Fund	102,118	102,118
	Total	2,019,304	2,019,304
35010-220	Worker's Compensation Supplemental Administrative Fund		
	Dedicated Funds	145,007	145,007
48270-220	Second Injury Fund		
	Dedicated Funds	7,046,791	7,046,791
50410-220	Residual Asbestos Injury Fund		
	Dedicated Funds	16,691	16,691
Worker's Compensation Board Totals			
	General Fund	1,917,186	1,917,186
	Dedicated Funds	7,208,489	7,208,489
	Total	9,125,675	9,125,675
Board of Animal Health			
12680-351	Board of Animal Health		
	General Fund	5,071,173	5,142,217
	Tfr-5730-57300-Captive Cervidae Programs	12,000	12,000
	Tfr-6000-44223-Equine Health & Care Programs	149,000	149,000
	Tfr-6000-48687-Dog Breeder / Broker Registrat	15,000	15,000
	Tfr-8010-61700-Department of Agriculture	125,374	125,374
	Total	5,372,547	5,443,591
18211-351	Indemnity Fund		
	General Fund	80,000	50,000
38020-351	Dairy Drug Residue Abatement Fund		
	Dedicated Funds	500	500
44223-351	Equine Health & Care Programs		
	Tfr-6000-43910-Gaming Integrity Fund-IHRC	150,000	150,000
44224-351	Advisors Charitable Gift		
	Dedicated Funds	16,000	16,000
45510-351	Workshop Clearing Account		
	Dedicated Funds	375	375
48687-351	Dog Breeder / Broker Registration		
	Dedicated Funds	21,000	21,000
57300-351	Captive Cervidae Programs		
	Dedicated Funds	30,000	30,000

Public Safety

Fund	State Agency Appropriation Name	Appropriations	
		FY 2017-2018	FY 2018-2019
61700-351-CISGRANT	Interstate Shipment Cooperative Agreement with the USDA		
	Gen-1000-15170-Transfer to Meat & Poultry	49,647	49,647
	Federal Funds	74,469	74,469
	Total	124,116	124,116
61700-351-DAPHDCIS	Public Health Data Comm. Infrastructure System		
	Gen-1000-15170-Transfer to Meat & Poultry	9,039	9,039
	Federal Funds	9,041	9,041
	Total	18,080	18,080
61700-351-MEATPLTY	Meat & Poultry Inspection		
	Gen-1000-15170-Transfer to Meat & Poultry	1,602,306	1,602,306
	Federal Funds	1,602,307	1,602,307
	Total	3,204,613	3,204,613
61700-351-SCRAPIEP	Scrapie Program		
	Federal Funds	57,457	57,457
61700-351-TRACEAB	Traceability		
	Federal Funds	130,000	130,000
Board of Animal Health Totals			
	General Fund	6,812,165	6,853,209
	Dedicated Funds	67,875	67,875
	Federal Funds	1,873,274	1,873,274
	Total	8,753,314	8,794,358
Homeland Security			
12420-385	Radiological Health		
	General Fund	74,955	74,955
17390-385	Emergency Management Contingency Fund		
	General Fund	114,456	114,456
37720-385	Fire and Building Services		
	Dedicated Funds	13,807,520	13,807,520
37740-385	Fire Training Infrastructure Fund (IC 22-14-6-1)		
	Tfr-5240-53210-Regional Public Safety Training Fund	470,450	470,450
44035-385	Nuclear Response Fund (IC 10-8-3-6)		
	Dedicated Funds	121,711	121,711
44036-385	Indiana Secured School Fund		
	Gen-1000-13084-Secured School Safety Grants	9,000,000	9,000,000
44152-385	Reduced Ignition Propensity Standards for Cigarettes Fund		
	Dedicated Funds	31,026	31,026
44530-385	Individual and Family Assistance		
	Dedicated Funds	2,000	2,000
44820-385	Medical Services Education Fund		
	Dedicated Funds	800	800

Public Safety

Fund	State Agency Appropriation Name	Appropriations	
		FY 2017-2018	FY 2018-2019
45240-385	Statewide Fire and Building Safety Education Fund		
	Dedicated Funds	98,089	98,089
45590-385	Radiological Emergency Preparedness		
	Dedicated Funds	165,647	165,647
47460-385	Fire Safety Awareness Program		
	Dedicated Funds	7,500	7,500
47880-385	Emergency Medical Services Fund		
	Dedicated Funds	5,000	5,000
51110-385	Indiana Emergency Response Commission		
	Dedicated Funds	71,407	71,407
51610-385	State Disaster Relief Fund		
	Dedicated Funds	485,000	485,000
53210-385	Regional Public Safety Training		
	Dedicated Funds	1,940,000	1,940,000
54610-385	Emergency Medical Services Restitution		
	Dedicated Funds	485	485
61800-385-DHSCTASC	Counter Terrorism and Security Council (C-TASC)		
	Federal Funds	2,500	2,500
61800-385-DISASTER	Pre-Disaster Mitigation Program		
	Federal Funds	176,340	176,340
61800-385-FIREGRNT	National Fire Academy Training Grants		
	Federal Funds	22,000	22,000
61800-385-HZARDMAP	Hazard Mitigation Assistance Program		
	Federal Funds	1,217,129	1,217,129
61800-385-IDHSEMPG	Emergency Management Performance Grant		
	Federal Funds	4,556,821	4,556,821
61800-385-IDHSHSGP	Homeland Security Grant Program		
	Federal Funds	7,939,342	7,939,342
61800-385-PUBLICCPA	Public Assistance		
	Gen-1000-15860-Public Assistance Match	1	1
	Federal Funds	800,351	800,351
	Total	800,352	800,352
61820-385-IDHSHMEP	Hazardous Materials Emergency Preparedness		
	Federal Funds	521,152	521,152
61821-385	DHS ED FUND		
	Federal Funds	6,126	6,126
Homeland Security Totals			
	General Fund	9,189,412	9,189,412
	Dedicated Funds	16,736,185	16,736,185
	Federal Funds	15,241,761	15,241,761
	Total	41,167,358	41,167,358

Public Safety

Fund	State Agency	Appropriations	
	Appropriation Name	FY 2017-2018	FY 2018-2019
REGULATORY & LICENSING TOTALS			
	General Fund	56,184,890	56,225,934
	Dedicated Funds	280,248,729	286,710,066
	Federal Funds	24,338,745	23,817,065
	Total	360,772,364	366,753,065
PUBLIC SAFETY TOTALS			
	General Fund	1,002,576,838	1,021,053,989
	Dedicated Funds	363,127,575	370,152,896
	Federal Funds	110,265,876	108,432,740
	Total	1,475,970,289	1,499,639,625