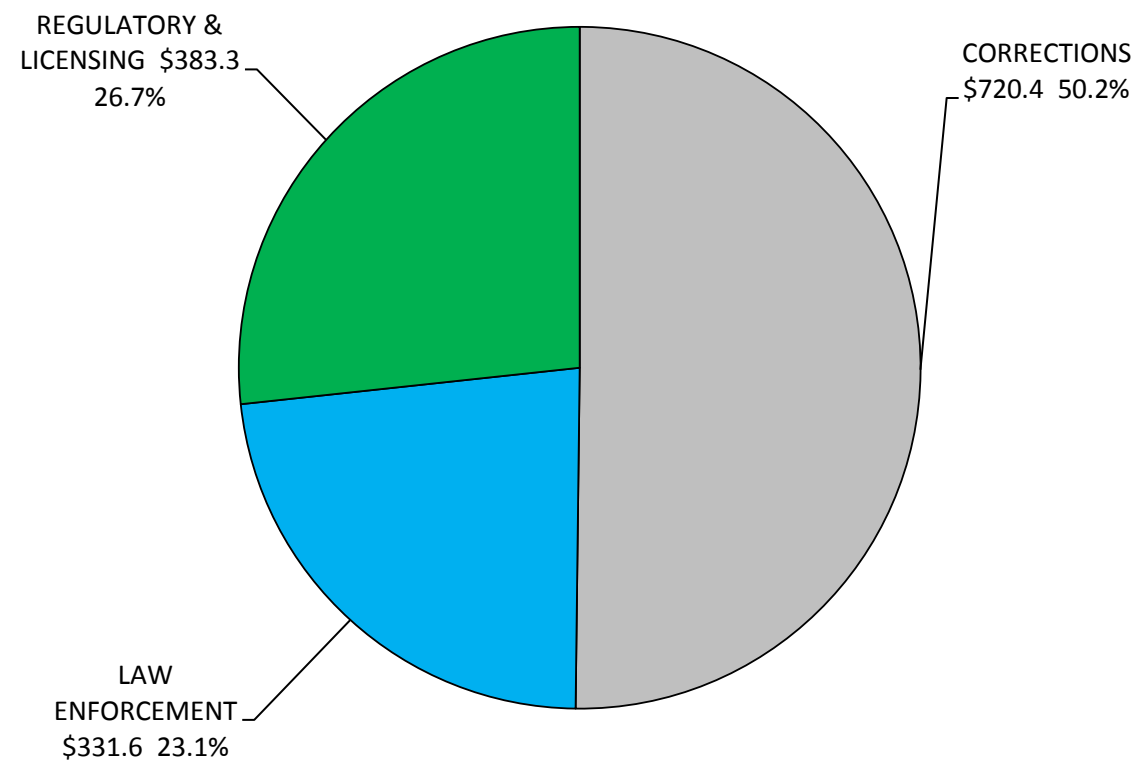


## **II — PUBLIC SAFETY**

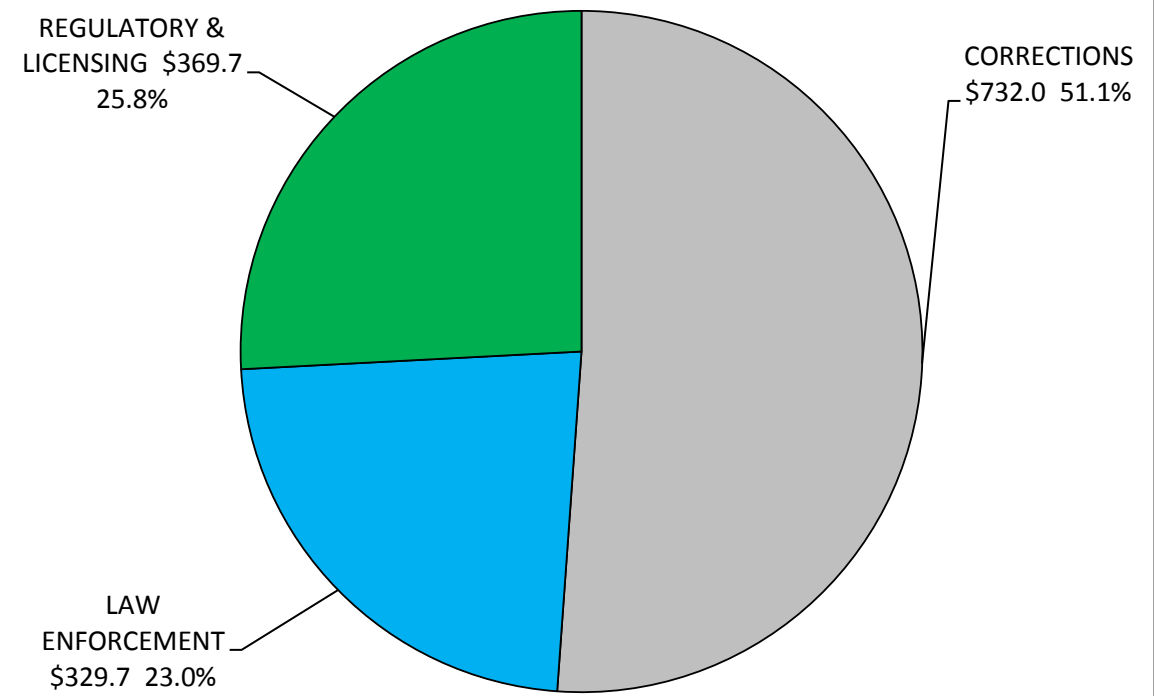


**PUBLIC SAFETY  
APPROPRIATIONS BY SUB-DIVISION SHARE  
2013-2015 BIENNIUM  
\$2,866.7 Million**

**FY 2013-2014 \$1,435.3 Million**

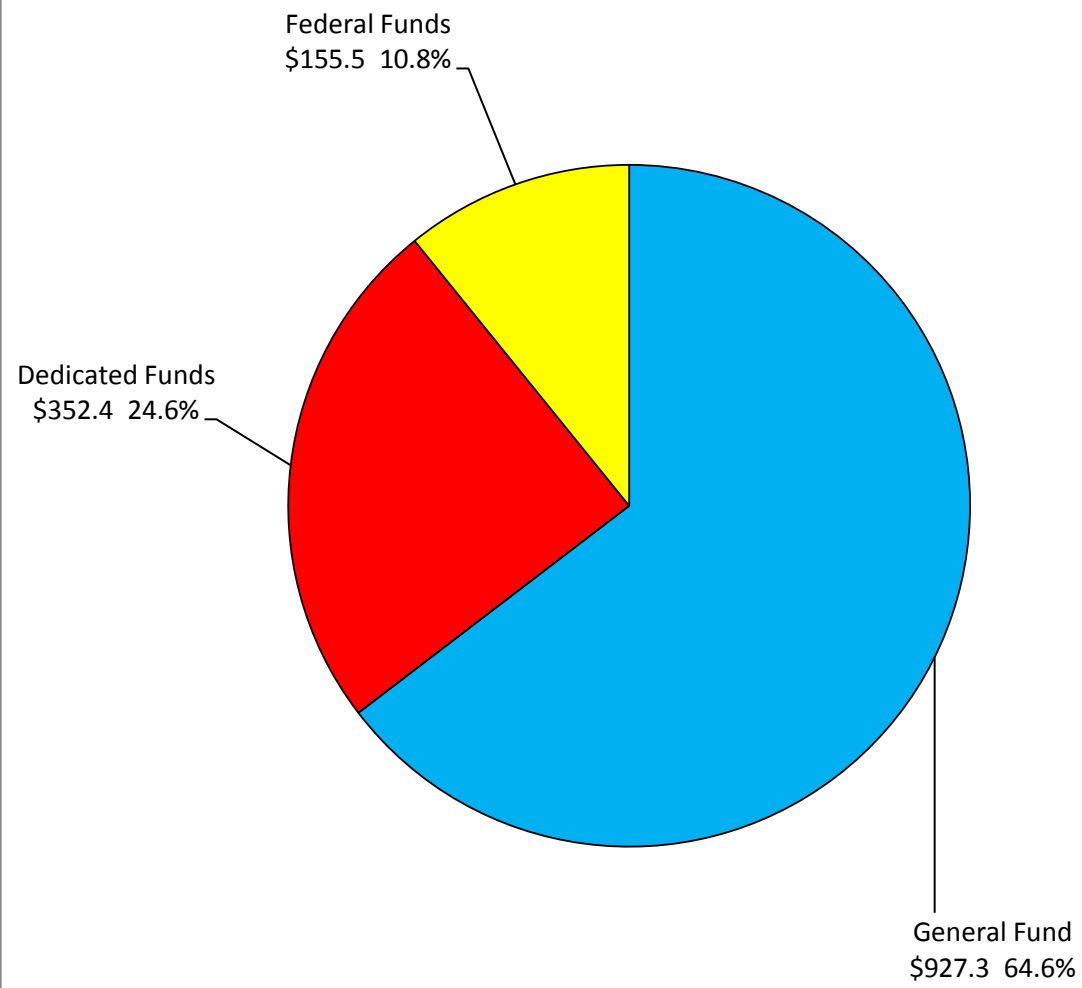


**FY 2014-2015 \$1,431.4 Million**

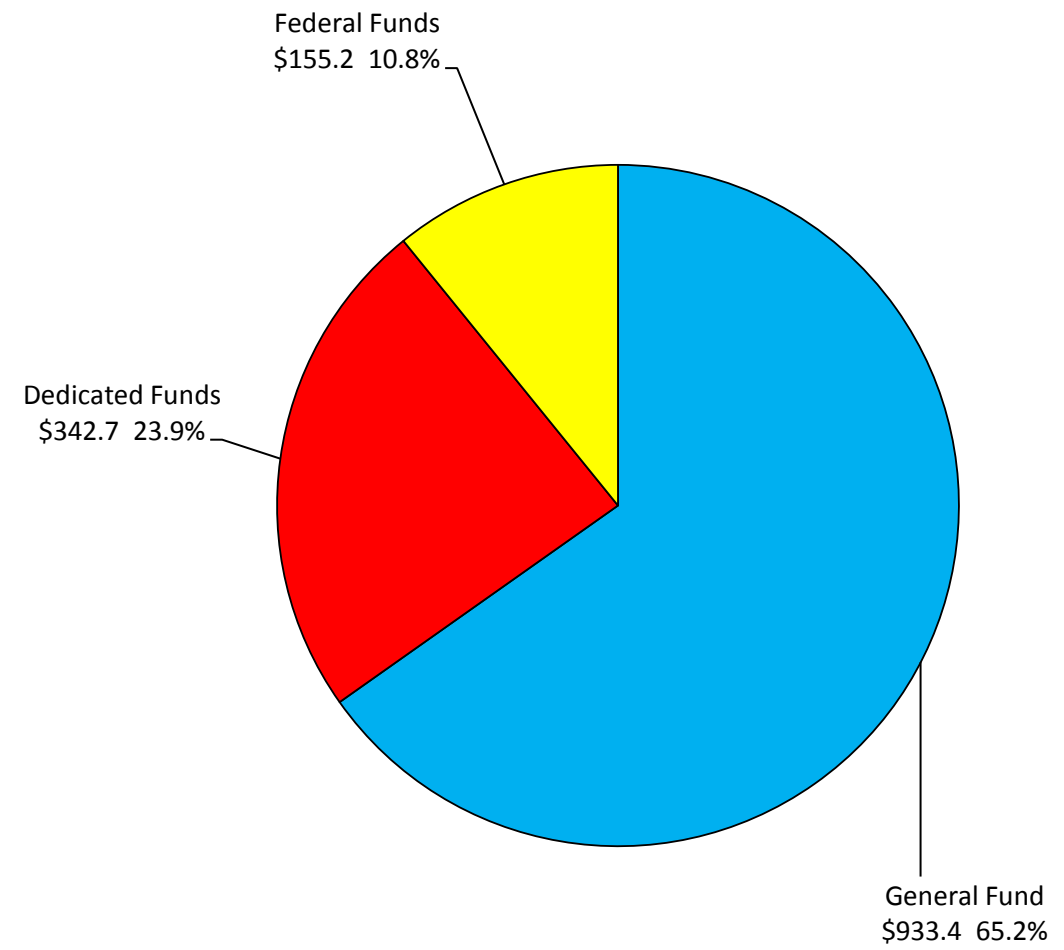


**PUBLIC SAFETY  
APPROPRIATIONS BY FUND TYPE  
2013-2015 BIENNIUM  
\$2,866.7 Million**

**FY 2013-2014 \$1,435.3 Million**



**FY 2014-2015 \$1,431.4 Million**



## Public Safety

Fund	State Agency	Appropriations	
	Appropriation Name	FY 2013-2014	FY 2014-2015
<b>PUBLIC SAFETY</b>			
<b>CORRECTIONS</b>			
<b>Department of Correction</b>			
<b>Administration</b>			
13370-057	Medical Service Payments		
	General Fund	25,000,000	25,000,000
11070-615	Drug Prevention and Offender Transition		
	General Fund	116,594	116,594
13390-615	Escaptee Counsel and Trial Expense		
	General Fund	284,489	284,489
13400-615	County Jail Misdemeanant Housing		
	General Fund	4,281,071	4,281,071
13430-615	Food Services		
	General Fund	36,519,291	37,851,221
13460-615	Adult Contract Beds		
	General Fund	5,567,488	5,567,488
13470-615	Staff Development and Training		
	General Fund	1,128,385	1,128,385
13490-615	Parole Division		
	General Fund	9,502,524	9,502,524
13500-615	Central Office		
	General Fund	18,674,440	18,674,440
13510-615	Parole Board		
	General Fund	752,206	752,206
13580-615	Information Management Services		
	General Fund	1,108,926	1,108,926
13770-615	Educational Services		
	General Fund	8,919,470	8,919,470
13830-615	Juvenile Transition		
	General Fund	4,830,264	5,830,264
15360-615	Central Emergency Response		
	General Fund	820,260	820,260
16420-615	County Jail Maintenance Contingency Fund		
	General Fund	18,448,831	18,448,831
17790-615	Community Corrections Programs		
	General Fund	43,262,752	47,262,752

## Public Safety

Fund	State Agency Appropriation Name	Appropriations	
		FY 2013-2014	FY 2014-2015
18790-615	Medical Services		
	General Fund	71,341,280	75,432,096
	Ded-6000-46270-OFFENDER MEDICAL CO-PAYMENT	230,000	230,000
	Tfr-1000-13370-MEDICAL SERVICE PAYMENTS	25,000,000	25,000,000
	Total	96,571,280	100,662,096
33310-615	Drug Abuse Prevention		
	Dedicated Funds	150,000	150,000
48677-615	DOC Child Support		
	Dedicated Funds	100,000	100,000
55310-615	Youth Services Transitional Program		
	Dedicated Funds	1	1
62500-615-ABEGRANT	Adult Basic Education		
	Federal Funds	247,800	247,800
62500-615-PARTBHAN	Chapter I, Part B Handicapped		
	Federal Funds	355,180	355,180
62500-615-TITLEONE	Title I-Youth Account		
	Federal Funds	573,838	573,838
62510-615-SCAAP	State Criminal Alien Assistance Program - SCAAP		
	Federal Funds	693,074	693,074
62540-615	Therapeutic Community		
	Federal Funds	1,668,000	1,668,000
62555-615	School Food Program		
	Federal Funds	900,000	900,000
71350-515	PEN Products Operating		
	Dedicated Funds	4,512,020	4,512,020
<b>Administration Totals</b>			
	General Fund	250,558,271	260,981,017
	Dedicated Funds	4,992,021	4,992,021
	Federal Funds	4,437,892	4,437,892
	Total	259,988,184	270,410,930
<b>Correctional Facilities</b>			
<b>Indiana State Prison</b>			
13550-620	Indiana State Prison		
	General Fund	34,688,270	34,688,270
71420-515	State Prison - PEN/Industries		
	Dedicated Funds	5,226,591	5,180,779
71510-515	State Prison - PEN/Farm		
	Dedicated Funds	7,000	7,000

## Public Safety

Fund	State Agency	Appropriations	
	Appropriation Name	FY 2013-2014	FY 2014-2015
<b>Indiana State Prison Totals</b>			
	General Fund	34,688,270	34,688,270
	Dedicated Funds	5,233,591	5,187,779
	<b>Total</b>	<b>39,921,861</b>	<b>39,876,049</b>
<b>Pendleton Correctional Facility</b>			
13610-630	Pendleton Correctional Facility		
	General Fund	30,006,109	30,006,109
71430-515	Pendleton Correctional Facility - PEN/Industries		
	Dedicated Funds	962,635	993,525
71520-515	Pendleton Correctional Facility - PEN/Farm		
	Dedicated Funds	10,000	10,000
	<b>Pendleton Correctional Facility Totals</b>		
	General Fund	30,006,109	30,006,109
	Dedicated Funds	972,635	1,003,525
	<b>Total</b>	<b>30,978,744</b>	<b>31,009,634</b>
<b>Correctional Industrial Facility</b>			
13620-635	Correctional Industrial Facility		
	General Fund	19,374,586	19,374,586
71490-515	Correctional Industrial Facility - Food		
	Dedicated Funds	753,934	753,934
	<b>Correctional Industrial Facility Totals</b>		
	General Fund	19,374,586	19,374,586
	Dedicated Funds	753,934	753,934
	<b>Total</b>	<b>20,128,520</b>	<b>20,128,520</b>
<b>Indiana Women's Prison</b>			
13640-640	Indiana Women's Prison		
	General Fund	11,506,854	11,506,854
71450-515	Women's Prison - PEN/Industries		
	Dedicated Funds	10,000	10,000
	<b>Indiana Women's Prison Totals</b>		
	General Fund	11,506,854	11,506,854
	Dedicated Funds	10,000	10,000
	<b>Total</b>	<b>11,516,854</b>	<b>11,516,854</b>
<b>Putnamville Correctional Facility</b>			
13670-650	Putnamville Correctional Facility		
	General Fund	30,111,938	30,111,938
71440-515	Putnamville Correctional Facility - PEN/Industries		
	Dedicated Funds	278,085	316,850

## Public Safety

Fund	State Agency Appropriation Name	Appropriations	
		FY 2013-2014	FY 2014-2015
71530-515	Putnamville Correctional Facility - PEN/Farm		
	Dedicated Funds	9,000	9,000
<hr/>			
	Putnamville Correctional Facility Totals		
	General Fund	30,111,938	30,111,938
	Dedicated Funds	287,085	325,850
	Total	30,399,023	30,437,788
<hr/>			
<b>Wabash Valley Correctional Facility</b>			
13730-665	Wabash Valley Correctional Facility		
	General Fund	38,155,137	38,155,137
71470-515	Wabash Valley Correctional Facility - PEN		
	Dedicated Funds	2,702,193	2,710,806
<hr/>			
	Wabash Valley Correctional Facility Totals		
	General Fund	38,155,137	38,155,137
	Dedicated Funds	2,702,193	2,710,806
	Total	40,857,330	40,865,943
<hr/>			
<b>Indianapolis Re-Entry Education Facility</b>			
13710-660	Indianapolis Re-Entry Education Facility		
	General Fund	7,447,556	7,447,556
<hr/>			
<b>Branchville Correctional Facility</b>			
13760-675	Branchville Correctional Facility		
	General Fund	18,888,874	18,888,874
71480-515	Branchville Correctional Facility - PEN/Industries		
	Dedicated Funds	1,199,526	1,199,526
<hr/>			
	Branchville Correctional Facility Totals		
	General Fund	18,888,874	18,888,874
	Dedicated Funds	1,199,526	1,199,526
	Total	20,088,400	20,088,400
<hr/>			
<b>Westville Correctional Facility</b>			
13780-680	Westville Correctional Facility		
	General Fund	46,806,301	46,806,301
71460-515	Westville Correctional Facility - PEN/Industries		
	Dedicated Funds	1,617,881	1,629,860
<hr/>			
	Westville Correctional Facility Totals		
	General Fund	46,806,301	46,806,301
	Dedicated Funds	1,617,881	1,629,860
	Total	48,424,182	48,436,161



## Public Safety

Fund	State Agency Appropriation Name	Appropriations	
		FY 2013-2014	FY 2014-2015
<b>Rockville Correctional Facility for Women</b>			
13810-685	Rockville Correctional Facility for Women		
	General Fund	14,576,892	14,576,892
71500-515	Rockville Correctional Facility - PEN/Industries		
	Dedicated Funds	961,277	998,417
<hr/>			
Rockville Correctional Facility for Women Totals			
	General Fund	14,576,892	14,576,892
	Dedicated Funds	961,277	998,417
<hr/>			
	Total	15,538,169	15,575,309
<b>Plainfield Correctional Facility</b>			
13840-690	Plainfield Correctional Facility		
	General Fund	23,091,486	23,091,486
71380-515	Plainfield Correctional Facility - PEN/Industries		
	Dedicated Funds	361,803	361,803
71400-515	Commissary		
	Dedicated Funds	20,005,994	20,005,994
<hr/>			
Plainfield Correctional Facility Totals			
	General Fund	23,091,486	23,091,486
	Dedicated Funds	20,367,797	20,367,797
<hr/>			
	Total	43,459,283	43,459,283
<b>Reception and Diagnostic Center</b>			
13850-695	Reception and Diagnostic Center		
	General Fund	13,245,631	13,245,631
<b>Miami Correctional Facility</b>			
13600-618	Miami Correctional Facility		
	General Fund	32,309,794	32,309,794
71540-515	Miami Correctional Facility - PEN/Industries		
	Dedicated Funds	4,317,083	4,620,477
<hr/>			
Miami Correctional Facility Totals			
	General Fund	32,309,794	32,309,794
	Dedicated Funds	4,317,083	4,620,477
<hr/>			
	Total	36,626,877	36,930,271
<b>New Castle Correctional Facility</b>			
13650-645	New Castle Correctional Facility		
	General Fund	38,285,030	39,064,507
<hr/>			

## Public Safety

Fund	State Agency Appropriation Name	Appropriations	
		FY 2013-2014	FY 2014-2015
<b>Correctional Facilities Totals</b>			
	General Fund	358,494,458	359,273,935
	Dedicated Funds	38,423,002	38,807,971
	<b>Total</b>	<b>396,917,460</b>	<b>398,081,906</b>
<b>Correctional Units</b>			
13440-607	Henryville Correctional Facility		
	General Fund	2,525,339	2,525,339
13520-614	Chain O' Lakes Correctional Facility		
	General Fund	1,873,307	1,873,307
13740-667	Madison Correctional Facility		
	General Fund	7,706,638	7,706,638
13860-697	Edinburgh Correctional Facility		
	General Fund	3,425,018	3,425,018
13450-615	Plainfield STOP (Short Term Offender Placement)		
	General Fund	9,096,371	9,096,371
<b>Correctional Units Totals</b>			
	General Fund	24,626,673	24,626,673
<b>Juvenile Residential</b>			
13700-616	North Central Juvenile Correctional Facility		
	General Fund	10,897,207	10,897,207
	Tfr-8084-62500-DOC DOEd Fund	143,459	143,459
	<b>Total</b>	<b>11,040,666</b>	<b>11,040,666</b>
13720-661	Camp Summit		
	General Fund	3,737,484	3,737,484
	Tfr-8084-62500-DOC DOEd Fund	143,459	143,459
	<b>Total</b>	<b>3,880,943</b>	<b>3,880,943</b>
13680-655	Pendleton Juvenile Correctional Facility		
	General Fund	16,383,128	16,383,128
	Tfr-8084-62500-DOC DOEd Fund	143,460	143,460
	<b>Total</b>	<b>16,526,588</b>	<b>16,526,588</b>
14535-672	Madison Juvenile Correctional Facility		
	General Fund	5,630,264	5,630,264
	Tfr-8084-62500-DOC DOEd Fund	143,460	143,460
	<b>Total</b>	<b>5,773,724</b>	<b>5,773,724</b>
<b>Juvenile Residential Totals</b>			
	General Fund	36,648,083	36,648,083
	<b>Total</b>	<b>36,648,083</b>	<b>36,648,083</b>

## Public Safety

Fund	State Agency	Appropriations	
	Appropriation Name	FY 2013-2014	FY 2014-2015
<b>Social Services Block Grant (Title XX)</b>			
41714-615	Title XX Work Release - South Bend Work Release Center		
	Gen-1000-13480-SOCIAL SERV BLOCK GRNT TITLE XX	1,732,641	1,732,641
	Ded-1000-17800-WORK RELEASE IC 11-10-8-6.5	350,000	350,000
	<b>Total</b>	<b>2,082,641</b>	<b>2,082,641</b>
<b>Industry and Farms Division</b>			
<b>Industries and Farms</b>			
60011-515	PEN Federal Fund		
	Federal Funds	20,000	0
<b>Department of Correction Totals</b>			
	General Fund	672,060,126	683,262,349
	Dedicated Funds	43,765,023	44,149,992
	Federal Funds	4,457,892	4,437,892
	<b>Total</b>	<b>720,283,041</b>	<b>731,850,233</b>
<b>Other Correction</b>			
<b>Department of Administration</b>			
11640-061	Department of Correction Ombudsman Bureau		
	General Fund	151,179	151,179
<b>CORRECTIONS TOTALS</b>			
	General Fund	672,211,305	683,413,528
	Dedicated Funds	43,765,023	44,149,992
	Federal Funds	4,457,892	4,437,892
	<b>Total</b>	<b>720,434,220</b>	<b>732,001,412</b>
<b>LAW ENFORCEMENT</b>			
<b>State Police</b>			
14900-100	Indiana State Police and Motor Carrier Inspection		
	General Fund	120,660,465	120,660,465
	Ded-2270-32830-Motor Carrier Regulation	4,246,537	4,246,537
	Tfr-6000-47410-EXCESS HANDGUN LICENSE FEES	2,129,650	2,129,650
	Tfr-8020-60810-ISP DOT Fund	1,292,925	1,292,925
	<b>Total</b>	<b>128,329,577</b>	<b>128,329,577</b>
12755-100	Indiana Intelligence Fusion Center		
	General Fund	799,145	799,145
13076-100	ISP OPEB Contribution		
	General Fund	12,712,746	11,290,241

## Public Safety

Fund	State Agency Appropriation Name	Appropriations	
		FY 2013-2014	FY 2014-2015
13117-100	Forensic and Health Sciences Laboratories		
	General Fund	9,820,346	9,820,346
	Ded-2270-32830-Motor Carrier Regulation	345,641	345,641
	Total	10,165,987	10,165,987
14910-100	Pension Fund		
	General Fund	10,608,000	10,218,000
14920-100	Supplemental Pension		
	General Fund	2,982,000	2,882,000
14990-100	Benefit Fund		
	General Fund	4,580,000	4,680,000
16720-100	Enforcement Aid		
	General Fund	74,761	74,761
17380-100	Insurance Recovery		
	Dedicated Funds	127,541	127,541
32210-100	State Police Training		
	Dedicated Funds	491,600	491,600
32720-100	Odometer Fraud Investigation		
	Dedicated Funds	97,113	97,113
33210-100	Drug Interdiction		
	Dedicated Funds	215,000	215,000
38110-100	Accident Reporting		
	Dedicated Funds	25,500	25,500
44000-100	Airport Task Force		
	Dedicated Funds	862	862
44180-100	Project Income/Grant		
	Dedicated Funds	250,000	250,000
44470-100	Fingerprint (FBI Print)		
	Dedicated Funds	1,017,094	1,017,094
44860-100	US Attorney General Forfeited		
	Dedicated Funds	250,000	250,000
47410-100	Excess Handgun License Fees		
	Dedicated Funds	2,968,800	2,968,800
48360-100	DNA Sample Processing Fund		
	Dedicated Funds	1,352,891	1,352,891
48450-100	ISP Youth Education, Museum & Memorial		
	Dedicated Funds	85,972	85,972
60800-100	Criminal Justice Planning		
	Federal Funds	423,800	423,800
	Transferred Funds	391,200	391,200
	Total	815,000	815,000
60800-100-CHLDCRME	Crimes Against Children Program		
	Federal Funds	340,767	340,767

## Public Safety

Fund	State Agency Appropriation Name	Appropriations	
		FY 2013-2014	FY 2014-2015
60800-100-GANGINTL	Gang Intelligence Sharing Project		
	Transferred Funds	91,925	91,925
60800-100-STPOLLAB	Forensic Science		
	Federal Funds	599,821	599,821
	Transferred Funds	531,916	531,916
	Total	1,131,737	1,131,737
60800-100-SUPPRESS	Meth Suppression Grant		
	Transferred Funds	393,806	393,806
60810-100-FATLCRSH	Highway Safety Plan 100 - Fatal Crashes		
	Federal Funds	114,000	114,000
60810-100-ISPMCSAP	Motor Carrier Safety Assistance Program		
	Federal Funds	6,039,232	6,039,232
	Transferred Funds	1,509,808	1,509,808
	Total	7,549,040	7,549,040
60810-100-ISPNTSA	Highway Safety Plan 100 - NHSTA		
	Transferred Funds	1,698,453	1,698,453
60810-100-NEWENTRN	Motor Carrier Safety Assistance Program New Entrant		
	Federal Funds	964,722	964,722
60820-100	Homeland Security		
	Transferred Funds	300,000	300,000
<b>State Police Totals</b>			
	General Fund	162,237,463	160,424,958
	Dedicated Funds	11,474,551	11,474,551
	Federal Funds	8,482,342	8,482,342
	Total	182,194,356	180,381,851
<b>Adjutant General</b>			
10495-110	Camp Atterbury Muscatatuck Center for Complex Operations		
	General Fund	837,350	837,350
11030-110	Adjutant General		
	General Fund	8,573,235	8,573,235
11080-110	Disabled Soldiers' Pension		
	General Fund	1	1
15250-110	MUTC - Muscatatuck Urban Training Center		
	General Fund	1,143,499	1,143,499
15260-110	Hoosier Youth Challenge Academy		
	General Fund	1,800,000	1,800,000
	Ded-6000-47942-STATE ARMORY	405,000	405,000
	Total	2,205,000	2,205,000
18213-110	Governor's Civil and Military Contingency Fund		
	General Fund	122,685	122,685

## Public Safety

Fund	State Agency	Appropriations	
	Appropriation Name	FY 2013-2014	FY 2014-2015
60900-110	Advance Appendix 3		
	Federal Funds	5,909,704	5,909,704
	Tfr-1000-11030-ADJUTANT GENERAL	25,000	25,000
	Total	5,934,704	5,934,704
60900-110-ADVNAPP1	Advance Appendix I		
	Federal Funds	6,298,029	6,298,029
	Tfr-1000-11030-ADJUTANT GENERAL	2,638,721	2,638,721
	Total	8,936,750	8,936,750
60900-110-ADVNAPP2	Advance Appendix 2		
	Federal Funds	894,122	894,122
60900-110-BAERCOOP	Baer Field Federal Coop Agreement		
	Federal Funds	3,067,438	3,067,438
	Tfr-1000-11030-ADJUTANT GENERAL	427,378	427,378
	Total	3,494,816	3,494,816
60900-110-CAMP RPOM	Camp Atterbury - Real Property Operations and Maintenance		
	Federal Funds	6,776,110	6,776,110
60900-110-CNSTRCTN	Advance Appendix 10 - Military Construction Army		
	Federal Funds	82,869	82,869
60900-110-ELECTSEC	Electronic Security		
	Federal Funds	242,555	242,555
60900-110-HLMNCOOP	Hulman Field Federal Coop Agreement		
	Federal Funds	1,354,229	1,354,229
	Tfr-1000-11030-ADJUTANT GENERAL	403,782	403,782
	Total	1,758,011	1,758,011
60900-110-HYCACOOP	Hoosier Youth Challenge Academy		
	Federal Funds	2,625,000	2,625,000
	Tfr-1000-15260-HOOSIER YOUTH CHALLENGE ACADEMY	875,000	875,000
	Total	3,500,000	3,500,000
60900-110-MUTCCOOP	MUTC - Muscatatuck Urban Training Center		
	Federal Funds	3,744,422	3,744,422
	Tfr-1000-15250-MUTC-MUSCATATUCK URBAN TRNG CTR	250,000	250,000
	Total	3,994,422	3,994,422
60900-110-RESERVE C	Greenwood/Franklin Armed Forces Reserve Center		
	Federal Funds	46,398,319	46,398,319
60900-110-TRAINING	Range and Training Land Program		
	Federal Funds	1,742,212	1,742,212
60910-110	State Active Duty FEMA Reimbursement		
	Federal Funds	60,000	60,000

## Public Safety

Fund	State Agency	Appropriations	
	Appropriation Name	FY 2013-2014	FY 2014-2015
<b>Adjutant General Totals</b>			
	General Fund	12,476,770	12,476,770
	Dedicated Funds	405,000	405,000
	Federal Funds	79,195,009	79,195,009
	<b>Total</b>	<b>92,076,779</b>	<b>92,076,779</b>
<b>Criminal Justice Institute</b>			
15150-032	Criminal Justice Institute - Admin. Match		
	General Fund	414,435	414,435
16870-032	Drug Enforcement Match		
	General Fund	973,554	973,554
16950-032	Child Restraint System Fund		
	Dedicated Funds	150,000	150,000
17120-032	Sexual Assault Victims' Assistance		
	Dedicated Funds	25,000	25,000
31310-032	Victim and Witness Assistance Fund		
	Dedicated Funds	745,989	745,989
32610-032	Alcohol and Drug Countermeasures		
	Dedicated Funds	348,211	348,211
34510-032	State Drug Free Communities Fund		
	Dedicated Funds	578,000	578,000
36310-032	Indiana Safe Schools		
	Gen-1000-14870-INDIANA SAFE SCHOOLS	1,095,340	1,095,340
	Dedicated Funds	400,053	400,053
	<b>Total</b>	<b>1,495,393</b>	<b>1,495,393</b>
38410-032	Victims of Violent Crime Administration		
	Gen-1000-15264-State Supplement to SSBG CJI	636,763	636,763
	Dedicated Funds	2,562,000	2,562,000
	<b>Total</b>	<b>3,198,763</b>	<b>3,198,763</b>
39010-032	Domestic Violence Prevention and Treatment		
	Gen-1000-11590-DOMEST VIOLNCE PREV & TRTMNT PR	2,500,000	2,500,000
	Dedicated Funds	1,064,334	1,064,334
	<b>Total</b>	<b>3,564,334</b>	<b>3,564,334</b>

## Public Safety

Fund	State Agency	Appropriations	
	Appropriation Name	FY 2013-2014	FY 2014-2015
54010-032	Criminal Justice Institute		
	Tfr-1000-15150-JUVENILE JUSTICE	414,435	414,435
	Tfr-2090-31310-VICTIM & WITNESS ASSISTANCE	370,989	370,989
	Tfr-2540-34510-DRUG FREE COMMUNITIES	351,389	351,389
	Tfr-2780-36310-INDIANA SAFE SCHOOLS	207,876	207,876
	Tfr-3180-38410-VIOLENT CRIME ADMINISTRATION	236,180	236,180
	Tfr-3320-39010-DOMESTIC VIOLENCE PREV/TREAT	194,067	194,067
	Tfr-8016-60100-ICJI DOJ Fund	1,028,830	1,028,830
	Tfr-8020-60110-ICJI DOT Fund	848,729	848,729
	Tfr-8093-60117-ICJI DHHS Fund	79,165	79,165
	<b>Total</b>	<b>3,731,660</b>	<b>3,731,660</b>
60100-032-BYRNEJAG	Justice Assistance Grant		
	Federal Funds	3,875,920	3,875,920
60100-032-CJIOJJD	Office of Juvenile Justice and Delinquency Prevention		
	Federal Funds	531,091	531,091
60100-032-JUVENILE	Juvenile Accountability Block Grant		
	Federal Funds	753,096	753,096
60100-032-STOPVAWA	Stop Violence Against Women Formula		
	Federal Funds	2,102,900	2,102,900
60100-032-SUBABUSE	Residential Substance Abuse Treatment		
	Federal Funds	220,000	220,000
60100-032-VAFGRANT	Victim Assistance Formula Grant Program		
	Federal Funds	7,515,823	7,515,823
60110-032-CJINHTSA	Highway Passenger & Commercial Vehicle Grant		
	Gen-1000-13118-Office of Traffic Safety	523,333	523,333
	Federal Funds	11,352,333	11,352,333
	<b>Total</b>	<b>11,875,666</b>	<b>11,875,666</b>
60117-032-FAMVLNCE	Federal Family Violence		
	Federal Funds	1,655,000	1,655,000
<b>Criminal Justice Institute Totals</b>			
	General Fund	6,143,425	6,143,425
	Dedicated Funds	5,873,587	5,873,587
	Federal Funds	28,006,163	28,006,163
	<b>Total</b>	<b>40,023,175</b>	<b>40,023,175</b>
<b>Law Enforcement Training Academy</b>			
38920-103	Law Enforcement Training Academy		
	Gen-1000-10870-LAW ENFORCEMENT TRAINING ACADEMY	1,987,206	1,987,206
	Dedicated Funds	2,191,286	2,191,286
	<b>Total</b>	<b>4,178,492</b>	<b>4,178,492</b>



## Public Safety

Fund	State Agency	Appropriations	
	Appropriation Name	FY 2013-2014	FY 2014-2015
<b>Coroners' Training Board</b>			
36110-240	Coroners' Training Board		
	Dedicated Funds	400,000	400,000
<b>Integrated Public Safety Commission</b>			
37110-286	Integrated Public Safety Commission - Project SAFE-T		
	Dedicated Funds	10,669,612	10,594,612
<b>Department of Toxicology</b>			
44271-115	State Department of Toxicology		
	Dedicated Funds	2,031,056	2,031,056
<b>LAW ENFORCEMENT TOTALS</b>			
	General Fund	182,844,864	181,032,359
	Dedicated Funds	33,045,092	32,970,092
	Federal Funds	115,683,514	115,683,514
	Total	331,573,470	329,685,965
<b>REGULATORY &amp; LICENSING</b>			
<b>Motor Vehicles</b>			
<b>Bureau of Motor Vehicles</b>			
13077-235	Bureau of Motor Vehicles		
	General Fund	28,811,221	28,811,221
13119-235	License Plates		
	General Fund	15,021,750	11,758,250
13121-235	Commercial Driver Training Schools		
	General Fund	63,675	63,675
36510-235	Financial Responsibility Compliance Verification		
	Dedicated Funds	6,374,774	6,374,774
43210-235	Motorcycle Operator Safety		
	Dedicated Funds	1,113,661	1,113,661
50210-235	State Motor Vehicle Technology		
	Dedicated Funds	5,103,841	5,103,841
61320-235	Commercial Driver License Grant		
	Federal Funds	298,800	0
<b>Bureau of Motor Vehicles Totals</b>			
	General Fund	43,896,646	40,633,146
	Dedicated Funds	12,592,276	12,592,276
	Federal Funds	298,800	0
	Total	56,787,722	53,225,422

## Public Safety

Fund	State Agency	Appropriations	
	Appropriation Name	FY 2013-2014	FY 2014-2015
<b>Bureau of Motor Vehicles Commission</b>			
40910-340	License Branches		
	Dedicated Funds	86,488,206	86,488,206
<hr/>			
Bureau of Motor Vehicles Commission Totals			
	Dedicated Funds	86,488,206	86,488,206
<hr/>			
Motor Vehicles Totals			
	General Fund	43,896,646	40,633,146
	Dedicated Funds	99,080,482	99,080,482
	Federal Funds	298,800	0
	Total	143,275,928	139,713,628
<hr/>			
<b>Department of Labor</b>			
11960-225	Department of Labor		
	General Fund	832,414	832,414
	Tfr-8017-61300-DOL DOL Fund	200,613	200,613
	Total	1,033,027	1,033,027
11980-225	Bureau of Mines and Mining		
	General Fund	194,230	194,230
12000-225	Quality, Metrics, and Statistics (MIS)		
	General Fund	124,530	124,530
15110-225	Occupational Safety and Health		
	General Fund	2,021,475	2,021,475
35510-225	Employment of Youth		
	Dedicated Funds	167,826	167,826
40810-225	INSafe		
	Dedicated Funds	182,206	182,206
61300-225-21D	21D Grant		
	Federal Funds	867,000	867,000
	Transferred Funds	182,206	182,206
	Total	1,049,206	1,049,206
61300-225-23G	OSHA		
	Federal Funds	2,188,000	2,188,000
	Tfr-1000-15110-OCCUPATIONAL HEALTH & SAFETY	2,021,475	2,021,475
	Total	4,209,475	4,209,475
61300-225-OSHS	OSHS Grant		
	Federal Funds	162,432	162,432
	Tfr-1000-12000-M.I.S. PROJ STAT(TFR)	124,530	124,530
	Total	286,962	286,962

## Public Safety

Fund	State Agency	Appropriations	
	Appropriation Name	FY 2013-2014	FY 2014-2015
<b>Department of Labor Totals</b>			
	General Fund	3,172,649	3,172,649
	Dedicated Funds	350,032	350,032
	Federal Funds	3,217,432	3,217,432
	<b>Total</b>	<b>6,740,113</b>	<b>6,740,113</b>
<b>Department of Insurance</b>			
36410-210	Department of Insurance - Operating		
	Dedicated Funds	6,046,471	6,046,471
37920-210	Bail Bond Division		
	Dedicated Funds	207,609	207,609
48810-210	Patients' Compensation Fund		
	Dedicated Funds	100,000,000	100,000,000
48820-210	Patients' Compensation Authority		
	Dedicated Funds	1,549,526	1,549,526
50910-210	Political Subdivision Risk Management		
	Dedicated Funds	66,940	66,940
51020-210	Mine Subsidence Insurance		
	Dedicated Funds	10,657,482	657,482
54510-210	Title Insurance Enforcement Operating		
	Dedicated Funds	381,518	381,518
61200-210	Ind. Dept. of Insurance/U.S. Dept. of Health and Human Services		
	Federal Funds	2,403,423	2,403,423
<b>Department of Insurance Totals</b>			
	Dedicated Funds	118,909,546	108,909,546
	Federal Funds	2,403,423	2,403,423
	<b>Total</b>	<b>121,312,969</b>	<b>111,312,969</b>
<b>Alcohol and Tobacco Commission</b>			
37620-230	Alcohol and Tobacco Commission		
	Dedicated Funds	10,033,223	9,997,671
	Tfr-3230-38610-ADDICTIVE SERV ADMIN	519,800	519,800
	Tfr-8093-61405-ATC DHHS Fund	435,095	435,095
	<b>Total</b>	<b>10,988,118</b>	<b>10,952,566</b>
47530-230	Youth Tobacco Education and Enforcement		
	Dedicated Funds	170,000	170,000
61310-230	Enforcing Underage Drinking Laws		
	Federal Funds	300,000	300,000
61405-230	ATC DHHS Fund		
	Federal Funds	773,954	773,954

## Public Safety

Fund	State Agency	Appropriations	
	Appropriation Name	FY 2013-2014	FY 2014-2015
<b>Alcohol and Tobacco Commission Totals</b>			
	Dedicated Funds	10,203,223	10,167,671
	Federal Funds	1,073,954	1,073,954
	Total	11,277,177	11,241,625
<b>Department of Financial Institutions</b>			
39220-208	Department of Financial Institutions		
	Dedicated Funds	7,451,491	7,451,491
<b>Licensing</b>			
<b>Professional Licensing Agency</b>			
12030-250	Professional Licensing Agency		
	General Fund	4,933,148	4,933,148
	Tfr-1000-17130-IMPAIRED NURSES PROGRAM	101,621	101,621
	Tfr-1000-17350-IMPAIRED PHARMACISTS	110,320	110,320
	Tfr-6000-45290-CONTROLLED SUBSTANCES DATA FUND	271,511	271,511
	Tfr-6000-47350-INVESTIGATIVE FUND	63,502	63,502
	Tfr-6000-47355-ACCOUNTANT INVESTIGATIVE FUND	99,828	99,828
	Tfr-8016-61395-PLA DOJ Fund	58,768	58,768
	Total	5,638,698	5,638,698
17130-250	Impaired Nurses Program		
	Dedicated Funds	593,889	593,889
17350-250	Impaired Pharmacists Account		
	Dedicated Funds	173,035	173,035
30810-250	Dental Profession Investigation		
	Dedicated Funds	1	1
30910-250	Physician Investigation		
	Dedicated Funds	1	1
32310-250	Recovery Real Estate		
	Dedicated Funds	20,000	20,000
32410-250	Recovery Plumbers		
	Dedicated Funds	20,000	20,000
32510-250	Recovery Auctioneer		
	Dedicated Funds	20,000	20,000
35610-250	Preneed Consumer Protection		
	Dedicated Funds	50,000	50,000
40310-250	Board of Funeral and Cemetery Service		
	Dedicated Funds	250	250
45290-250	Controlled Substance Data Fund		
	Dedicated Funds	314,876	314,876
45290-250-INSPECT	Controlled Substances Data Fund - INSPECT Program		
	Dedicated Funds	1,000,000	1,000,000

## Public Safety

Fund	State Agency Appropriation Name	Appropriations	
		FY 2013-2014	FY 2014-2015
45291-250	Cosmetology and Barber Examiners Compliance		
	Dedicated Funds	1	1
47340-250	Real Estate Appraiser Federal Registration Fee		
	Dedicated Funds	48,000	76,000
47350-250	Investigative Fund		
	Dedicated Funds	74,622	74,622
47355-250	Accountant Investigative Fund		
	Dedicated Funds	115,853	115,853
61395-250-INSPECT	Professional Licensing Agency - Dept. of Justice Fund - INSPECT		
	Federal Funds	327,396	327,396
<hr/>			
Licensing Totals			
	General Fund	4,933,148	4,933,148
	Dedicated Funds	2,430,528	2,458,528
	Federal Funds	327,396	327,396
<hr/>			
	Total	7,691,072	7,719,072
<b>Civil Rights Commission</b>			
12080-258	Civil Rights Commission		
	General Fund	1,831,820	1,831,820
	Tfr-1000-12081-Commission on Hispanic /Latino	57,626	57,626
	Tfr-1000-12082-Women's Commission	81,770	81,770
	Tfr-1000-12083-Native American Indian Affairs	45,773	45,773
	Tfr-1000-12084-Commission on the Social Stat.	109,982	109,982
<hr/>			
	Total	2,126,971	2,126,971
12081-258	Commission on Hispanic/Latino Affairs		
	General Fund	102,432	102,432
12082-258	Women's Commission		
	General Fund	98,115	98,115
12083-258	Native American Indian Affairs Commission		
	General Fund	74,379	74,379
12084-258	Commission on the Social Status of Black Males		
	General Fund	135,431	135,431
17100-258	Martin Luther King Jr. Holiday Commission		
	General Fund	19,400	19,400
61400-258-FAIRHOUS	2000 Fair Housing Improvement Program Grant		
	Federal Funds	226,000	226,000
61401-258	CRC EEOC Fund		
	Federal Funds	222,500	222,500
<hr/>			
Civil Rights Commission Totals			
	General Fund	2,261,577	2,261,577
	Federal Funds	448,500	448,500
<hr/>			
	Total	2,710,077	2,710,077

## Public Safety

Fund	State Agency	Appropriations	
	Appropriation Name	FY 2013-2014	FY 2014-2015
<b>Utility Consumer Counselor</b>			
38550-205	Gas Cost Adjustment Settlement		
	Dedicated Funds	100,000	100,000
38560-205	Utility Consumer Counselor		
	Dedicated Funds	5,627,974	5,634,690
38570-205	Expert Witness Fees and Audit		
	Dedicated Funds	852,000	852,000
<hr/>			
Utility Consumer Counselor Totals			
	Dedicated Funds	6,579,974	6,586,690
<b>Utility Regulatory Commission</b>			
38520-200	Utility Regulatory Commission		
	Dedicated Funds	8,741,538	8,741,538
	Federal Funds	495,400	495,400
<hr/>			
	Total	9,236,938	9,236,938
38580-200	Pipeline Safety Training		
	Dedicated Funds	15,432	15,432
61100-200	State Damage Prevention Program		
	Federal Funds	45,000	45,000
<hr/>			
Utility Regulatory Commission Totals			
	Dedicated Funds	8,756,970	8,756,970
	Federal Funds	540,400	540,400
<hr/>			
	Total	9,297,370	9,297,370
<b>Worker's Compensation Board</b>			
11940-220	Worker's Compensation Board		
	General Fund	1,769,110	1,769,110
	Ded-2610-35010-WORKER COMP SUPPLEMENTAL ADMIN	145,007	145,007
	Tfr-6000-48270-SECOND INJURY FUND	43,000	43,000
<hr/>			
	Total	1,957,117	1,957,117
48270-220	Second Injury Fund		
	Dedicated Funds	5,206,245	5,206,245
50410-220	Residual Asbestos Injury Fund		
	Dedicated Funds	15,408	15,408
<hr/>			
Worker's Compensation Board Totals			
	General Fund	1,769,110	1,769,110
	Dedicated Funds	5,366,660	5,366,660
<hr/>			
	Total	7,135,770	7,135,770

## Public Safety

Fund	State Agency	Appropriations	
	Appropriation Name	FY 2013-2014	FY 2014-2015
<b>Board of Animal Health</b>			
12680-351	Board of Animal Health		
	General Fund	4,541,384	4,541,384
	Tfr-3120-38020-DAIRY DRUG RESIDUE ABATEMENT FD	4,400	4,400
	Tfr-6000-44223-Equine Health & Care Programs	72,000	72,000
	Tfr-6000-48687-Dog Breeder / Broker Registrat	7,745	7,745
	Tfr-8010-61700-BOAH DOAg Fund	94,194	94,194
	<b>Total</b>	<b>4,719,723</b>	<b>4,719,723</b>
18211-351	Indemnity Fund		
	General Fund	1	1
38020-351	Dairy Drug Residue Abatement Fund		
	Dedicated Funds	2,500	2,500
44223-351	Equine Health & Care Programs		
	Tfr-6000-43910-GAMING INTEGRITY FUND-IHRC	150,000	150,000
48687-351	Dog Breeder / Broker Registration		
	Dedicated Funds	8,190	8,190
61700-351-DAPHDCIS	Public Health Data Comm. Infrastructure System		
	Gen-1000-12680-BD OF ANIMAL HEALTH	7,963	7,963
	Federal Funds	7,962	7,962
	<b>Total</b>	<b>15,925</b>	<b>15,925</b>
61700-351-MEATPLTY	Meat & Poultry Inspection		
	Gen-1000-15170-TRANSFER TO MEAT & POULTRY	1,465,000	1,465,000
	Federal Funds	1,465,000	1,465,000
	<b>Total</b>	<b>2,930,000</b>	<b>2,930,000</b>
61700-351-SCRAPIEP	Scrapie Program		
	Federal Funds	35,930	35,930
61700-351-TRACEAB	Traceability		
	Federal Funds	50,000	50,000
<b>Board of Animal Health Totals</b>			
	General Fund	6,014,348	6,014,348
	Dedicated Funds	10,690	10,690
	Federal Funds	1,558,892	1,558,892
	<b>Total</b>	<b>7,583,930</b>	<b>7,583,930</b>
<b>Homeland Security</b>			
12420-385	Radiological Health		
	General Fund	77,273	77,273
13084-385	Secured School Safety Grants		
	General Fund	10,000,000	10,000,000
17390-385	Emergency Management Contingency Fund		
	General Fund	117,996	117,996

## Public Safety

Fund	State Agency Appropriation Name	Appropriations	
		FY 2013-2014	FY 2014-2015
37720-385	Fire and Building Services		
	Dedicated Funds	13,467,065	13,467,065
37740-385	Fire Training Infrastructure Fund (IC 22-14-6-1)		
	Tfr-5240-53210-REGIONAL PUBLIC SAFETY TRAINING	485,000	485,000
44035-385	Nuclear Response Fund (IC 10-8-3-6)		
	Dedicated Funds	4,807	4,807
44152-385	Reduced Ignition Propensity Standards for Cigarettes Fund		
	Dedicated Funds	1,475	1,475
45240-385	Statewide Fire and Building Safety Education Fund		
	Dedicated Funds	101,123	101,123
45590-385	Radiological Emergency Preparedness		
	Dedicated Funds	170,770	170,770
47920-385	Homeland Security Fund - Foundation		
	Dedicated Funds	141,200	141,200
51110-385	Indiana Emergency Response Commission		
	Dedicated Funds	73,615	73,615
51610-385	State Disaster Relief Fund		
	Dedicated Funds	500,000	500,000
53210-385	Regional Public Safety Training		
	Dedicated Funds	2,000,000	2,000,000
54610-385	Emergency Medical Services Restitution		
	Dedicated Funds	500	500
55115-385	Communications		
	Dedicated Funds	16,657	16,657
60211-385	DHS - Department of Energy Fund		
	Federal Funds	7,820	7,820
61800-385	Counter Terrorism and Security Council (C-TASC)		
	Federal Funds	8,176,960	8,176,960
61800-385-BFFRZONE	Buffer Zone Protection Program		
	Federal Funds	532,595	532,595
61800-385-DISASTER	Pre-Disaster Mitigation Program		
	Federal Funds	181,794	181,794
61800-385-HZARDMAP	Hazard Mitigation Assistance Program		
	Federal Funds	3,128,500	3,128,500
61800-385-IDHSEMPG	Emergency Management Performance Grant		
	Federal Funds	4,697,805	4,697,805
61800-385-IDHSHSGP	State Domestic Preparedness Equipment Program		
	Federal Funds	8,184,889	8,184,889
61800-385-INASSIST	Public Assistance		
	Gen-1000-15860-PUBLIC ASSISTANCE MATCH	1	1
61820-385-DHSNHTSA	Traffic Safety Data Strategic Plan		
	Federal Funds	89,500	89,500
61820-385-IDHSHMEP	Hazardous Materials Emergency Preparedness		
	Federal Funds	537,270	537,270



## Public Safety

Fund	State Agency	Appropriations	
	Appropriation Name	FY 2013-2014	FY 2014-2015
<b>Homeland Security Totals</b>			
	General Fund	10,195,270	10,195,270
	Dedicated Funds	16,477,212	16,477,212
	Federal Funds	25,537,133	25,537,133
	<b>Total</b>	<b>52,209,615</b>	<b>52,209,615</b>
<b>REGULATORY &amp; LICENSING TOTALS</b>			
	General Fund	72,242,748	68,979,248
	Dedicated Funds	275,616,808	265,615,972
	Federal Funds	35,405,930	35,107,130
	<b>Total</b>	<b>383,265,486</b>	<b>369,702,350</b>
<b>PUBLIC SAFETY TOTALS</b>			
	General Fund	927,298,917	933,425,135
	Dedicated Funds	352,426,923	342,736,056
	Federal Funds	155,547,336	155,228,536
	<b>Total</b>	<b>1,435,273,176</b>	<b>1,431,389,727</b>

## Public Safety

Fund	State Agency Appropriation Name	Appropriations FY 2013-2014	FY 2014-2015
------	------------------------------------	--------------------------------	--------------

---

(This page intentionally left blank.)