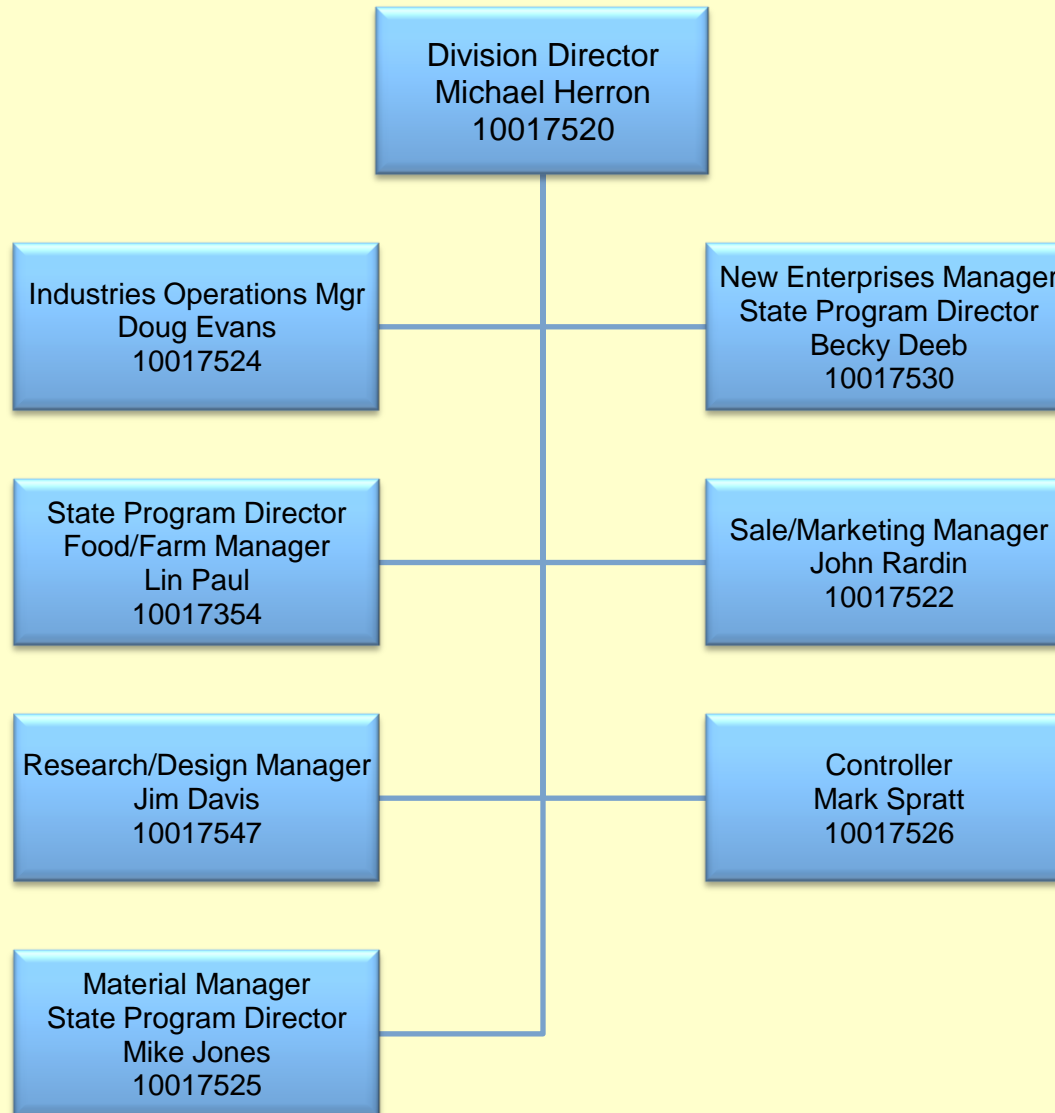
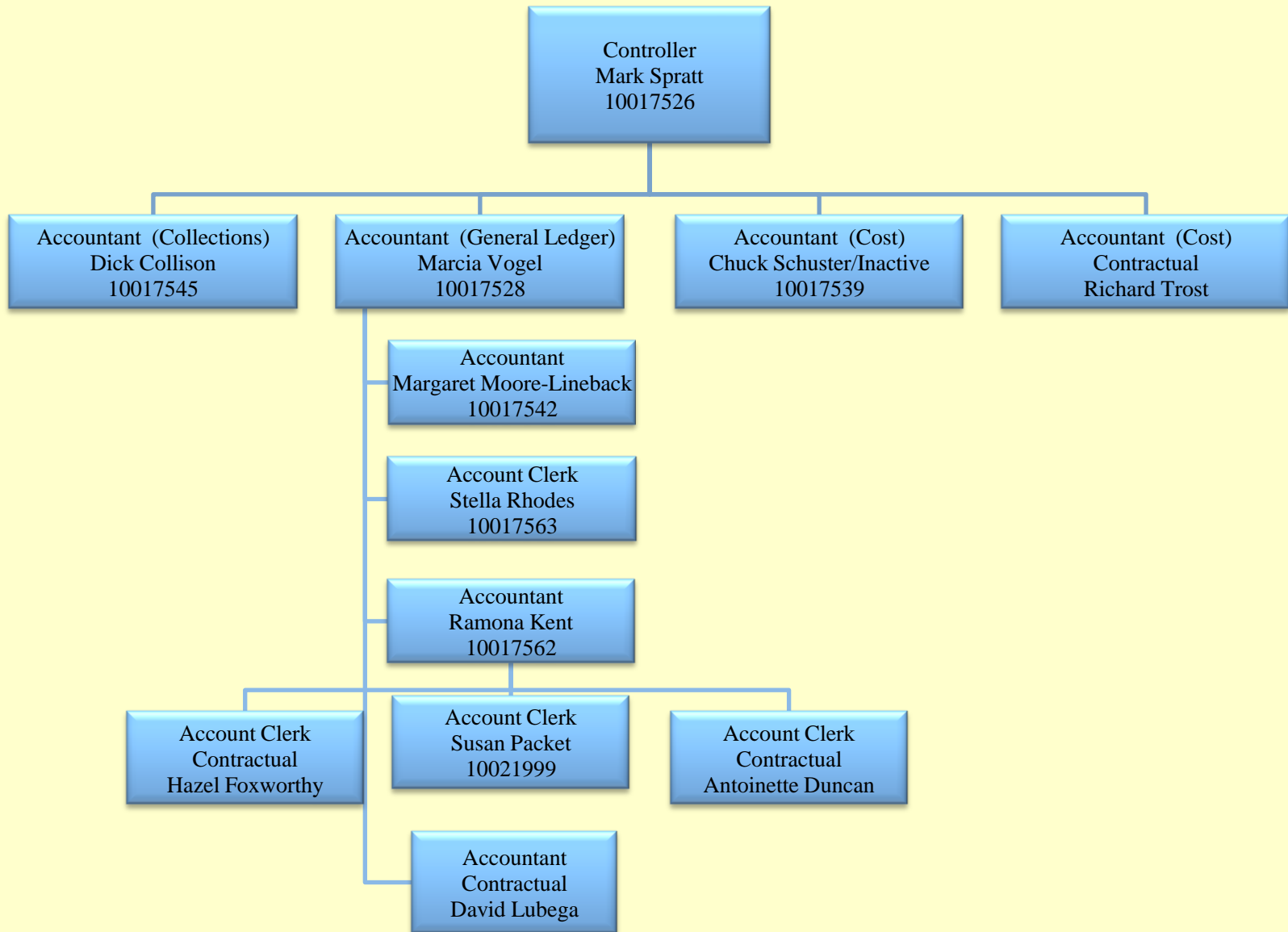


# PEN Products Office of the Director



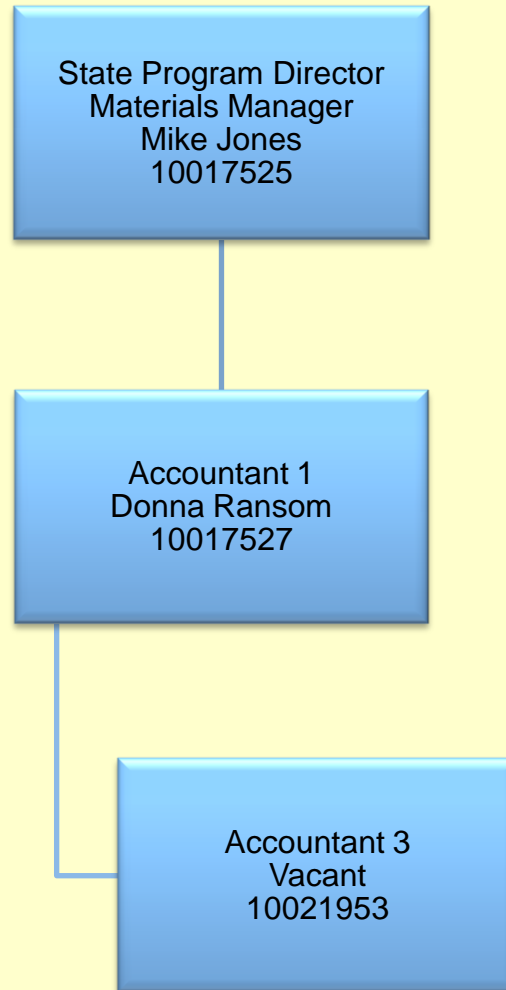
August, 2010

# PEN Products Division-Fiscal Section A



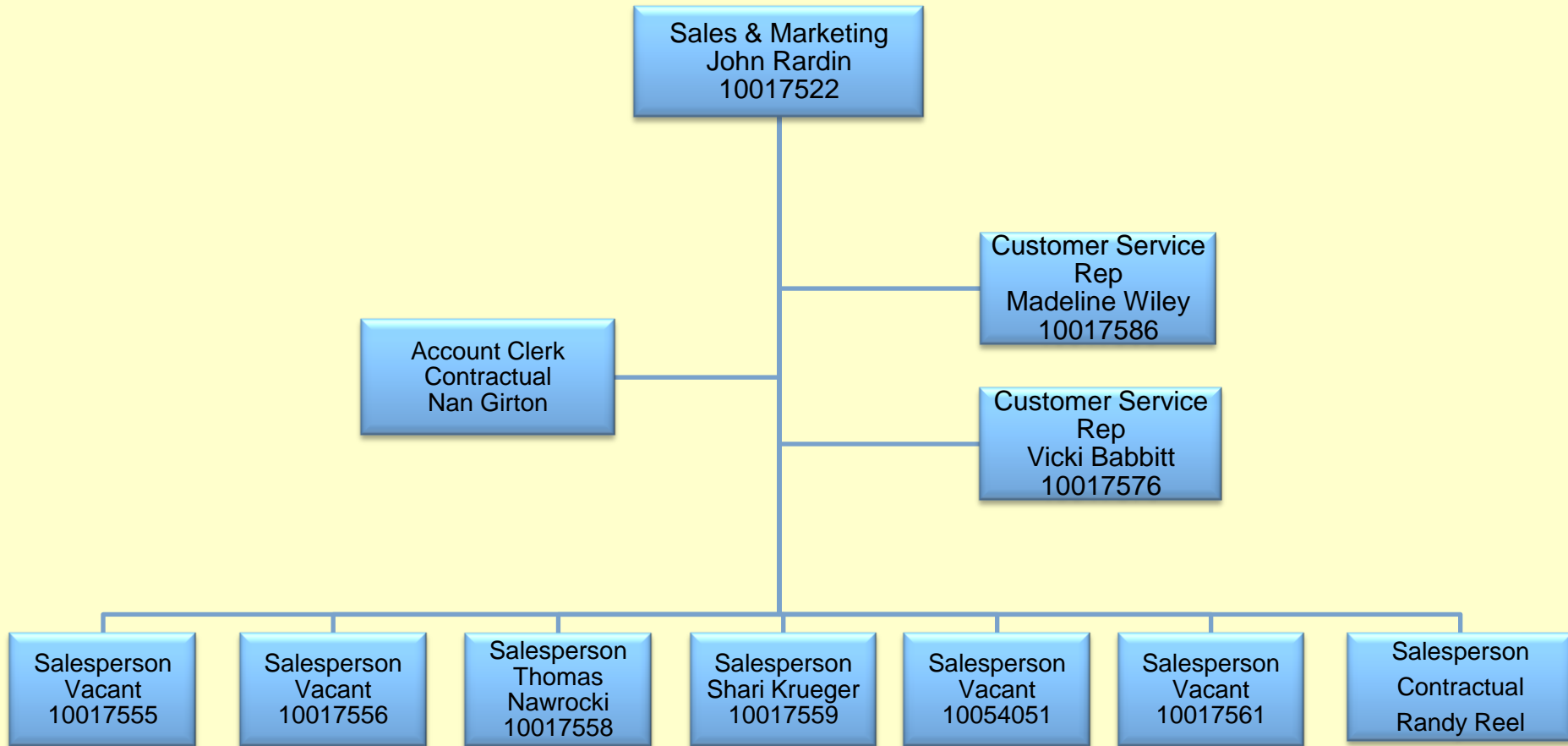
August, 2010

# PEN Products Division – Fiscal Section B



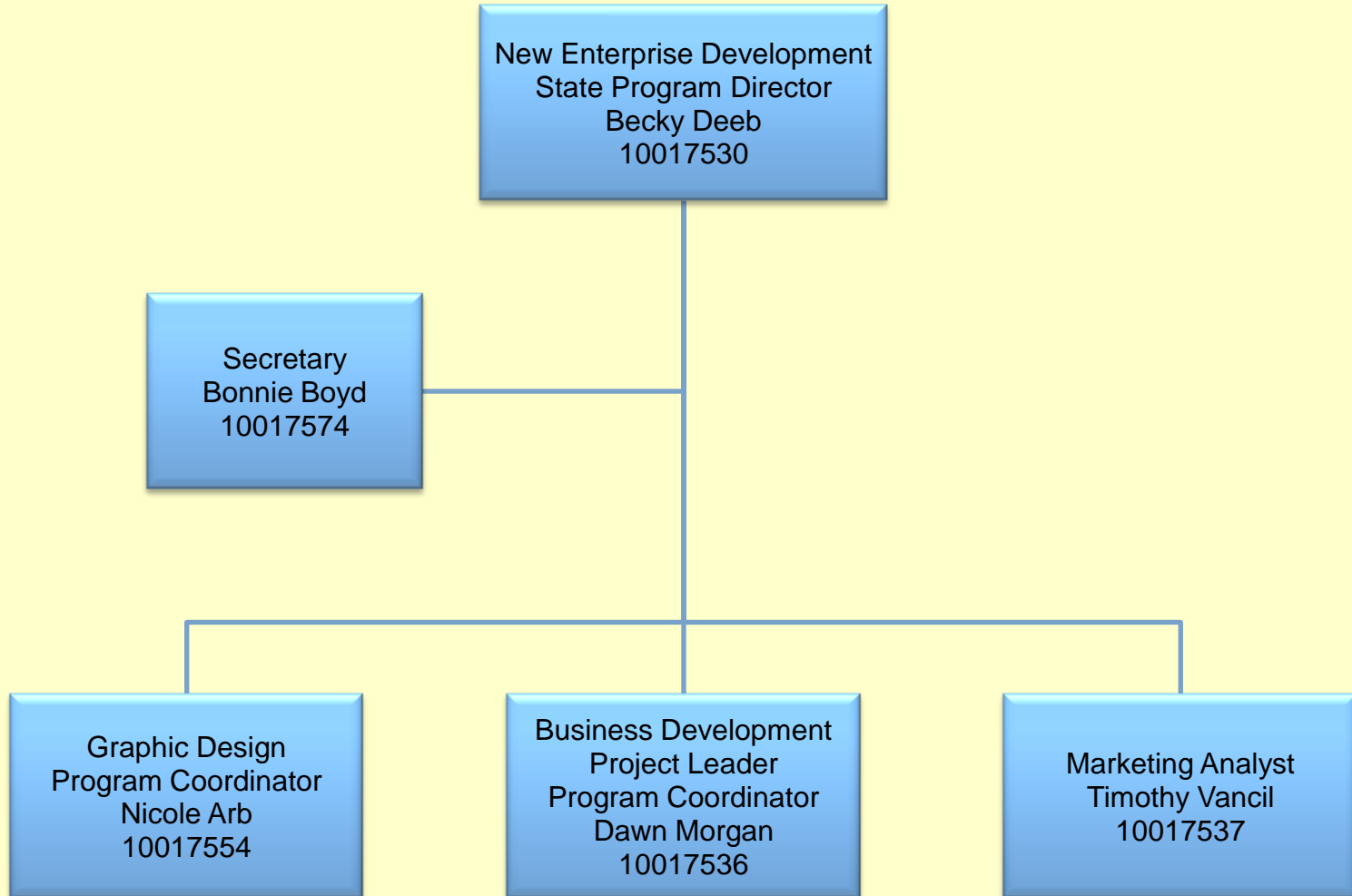
August, 2010

# PEN Products Sales & Marketing

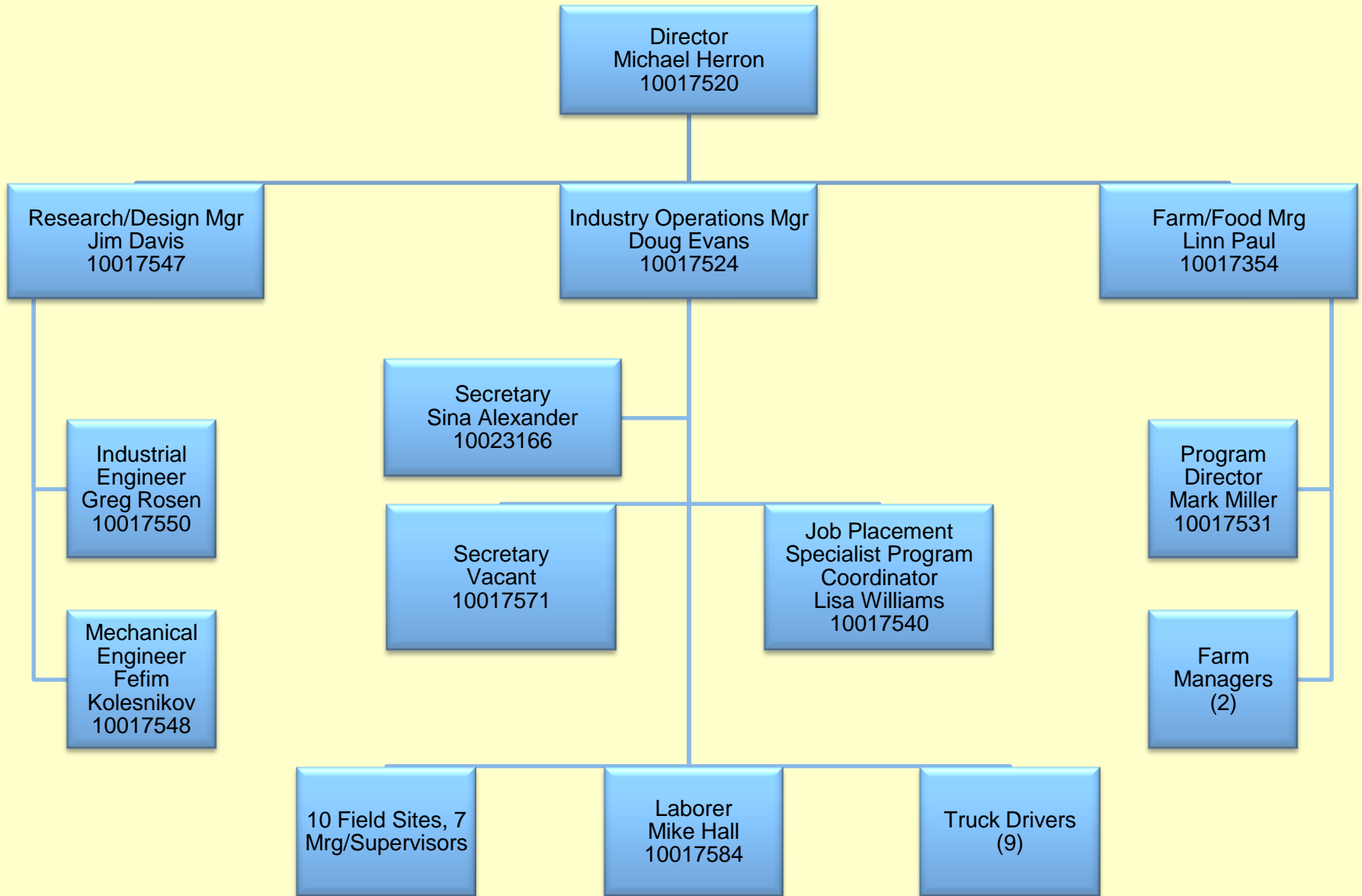


August, 2010

# PEN Products Division-New Enterprise

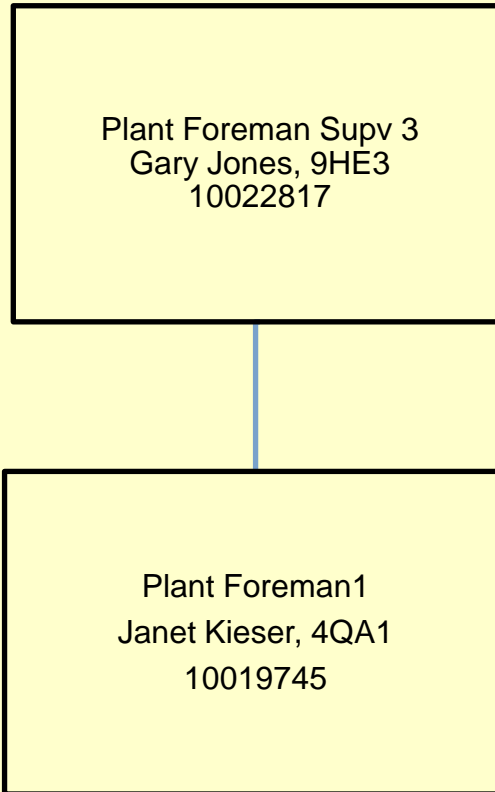


# PEN Products Division - Operations



August, 2010

# Branchville Correctional Facility PEN PRODUCTS Organizational Chart



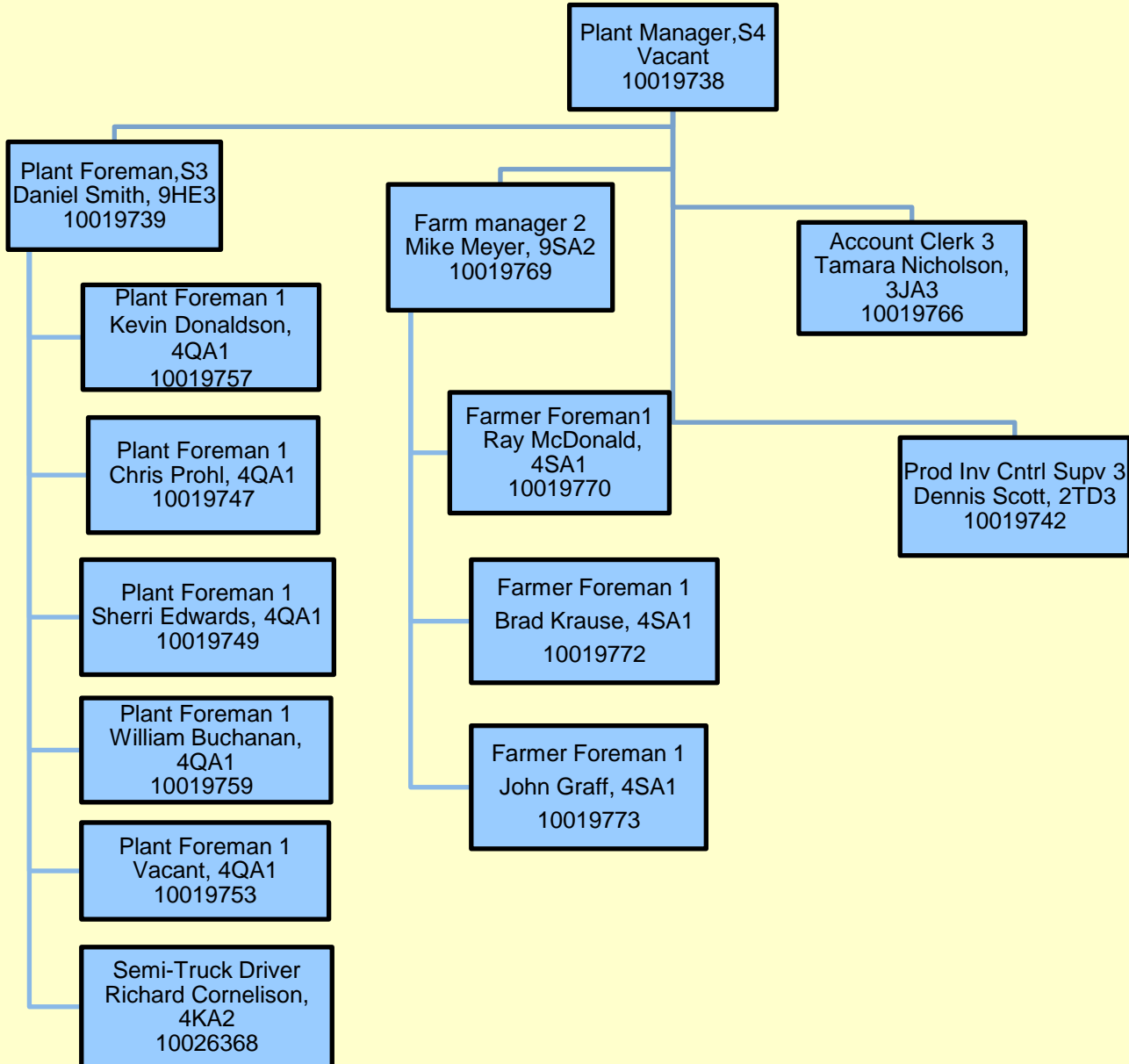
# Correctional Industrial Facility PEN PRODUCTS Organizational Chart



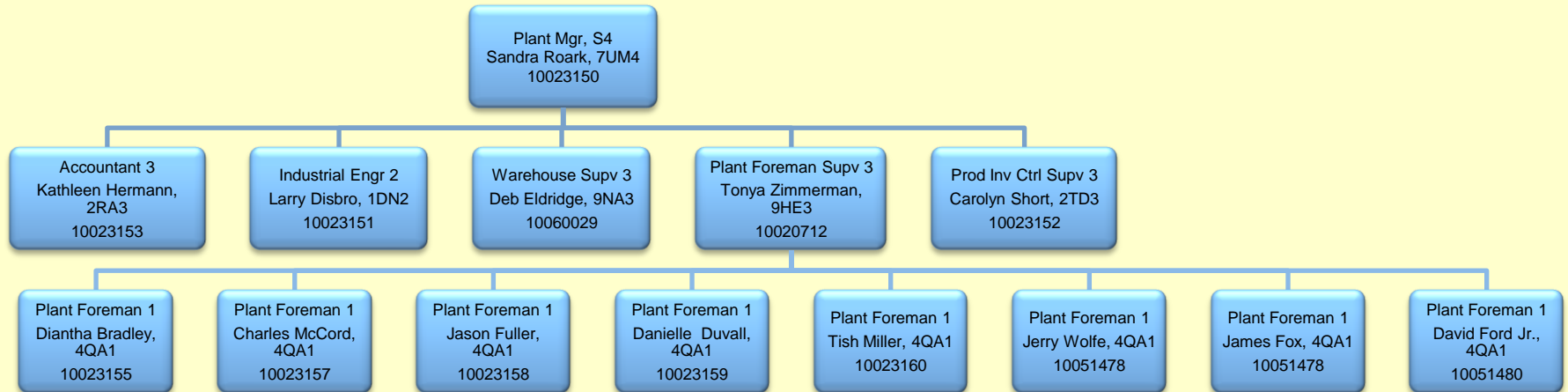
Meat Prod, S3  
Thomas Zell, 9CC3  
10021963



# Indiana State Prison PEN PRODUCTS Organizational Chart



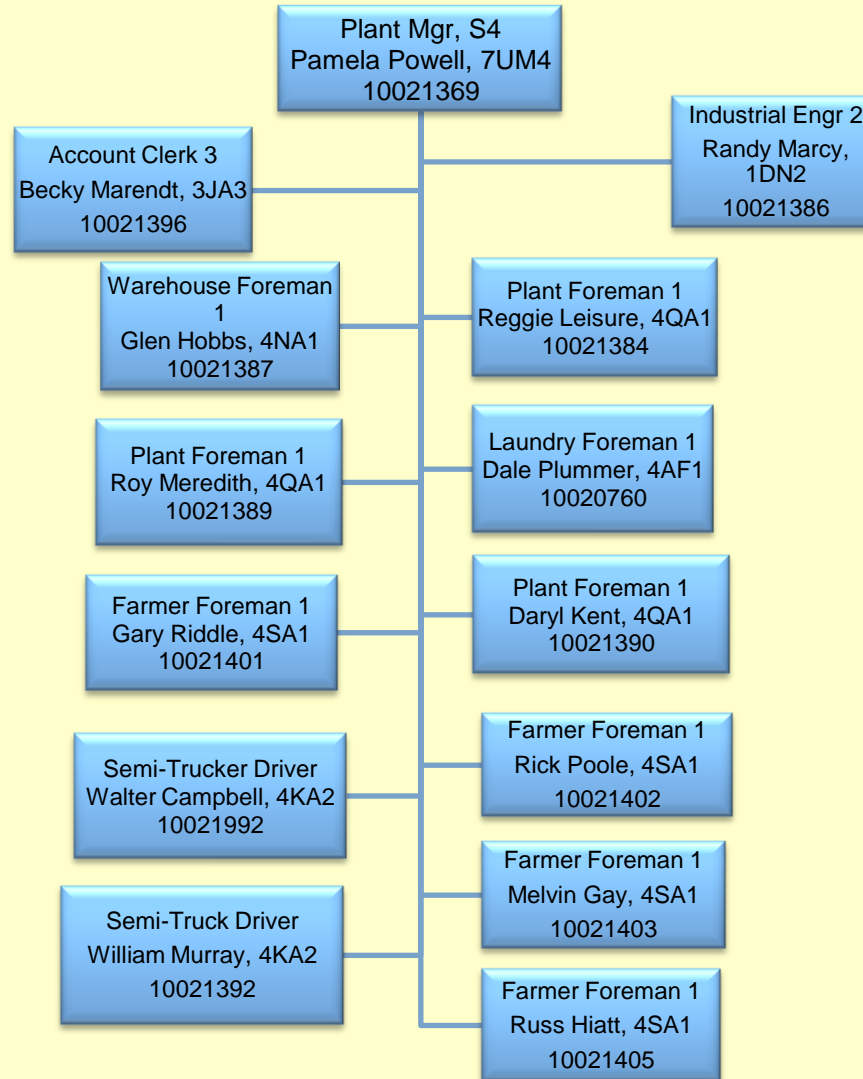
# Miami Correctional Facility PEN PRODUCTS Organizational Chart



\* Semi-Truck Driver positions moved to Central Office Staffing Report

August, 2010

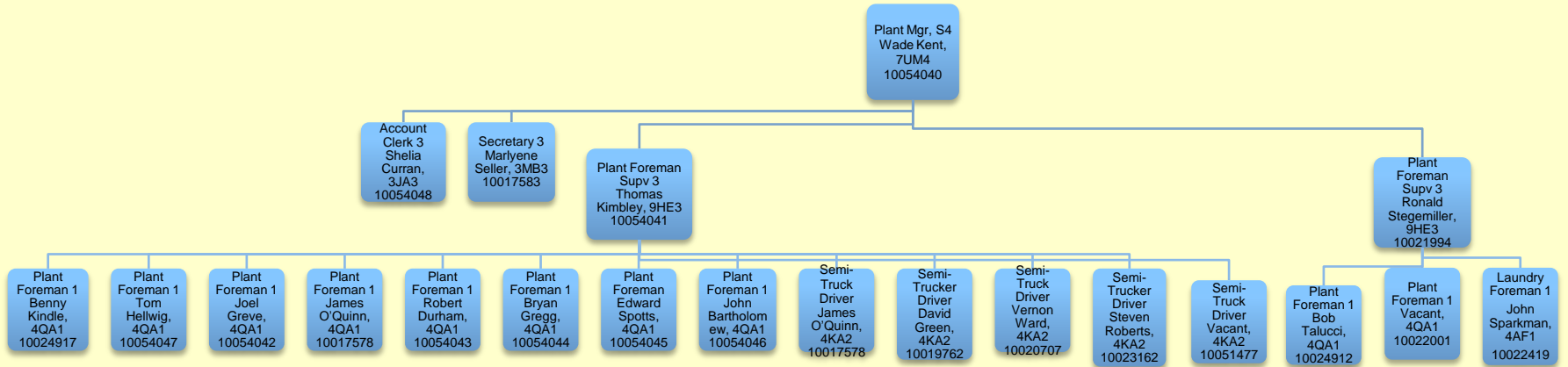
# Pendleton Correctional Facility PEN PRODUCTS Organizational Chart



\* Semi-Truck Driver positions moved to Central Office Staffing Report

August, 2010

# Plainfield Correctional Facility PEN PRODUCTS Organizational Chart



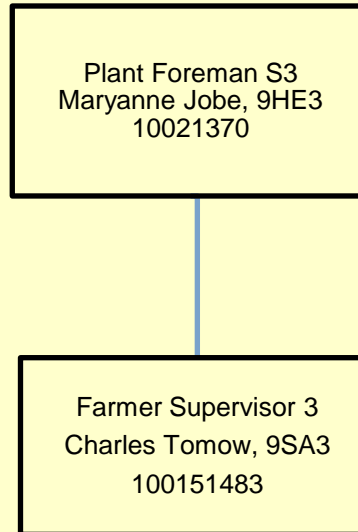
\* Semi-Truck Driver positions moved to Central Office Staffing Report

August, 2010

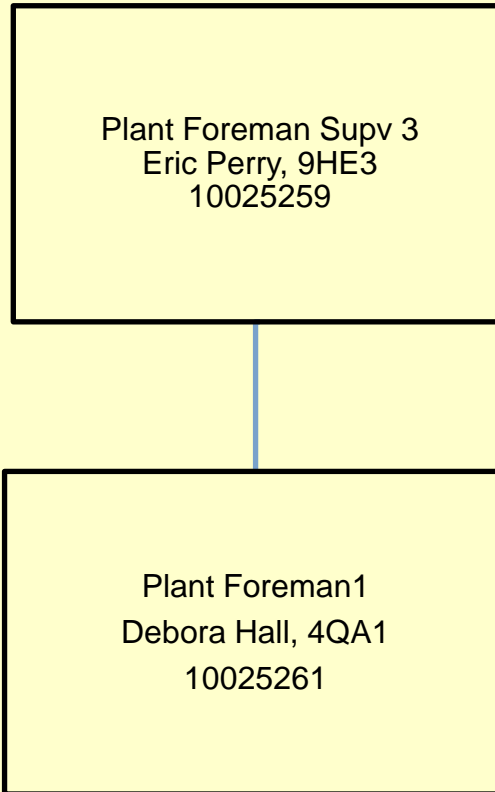
# Putnamville Correctional Facility

## PEN PRODUCTS

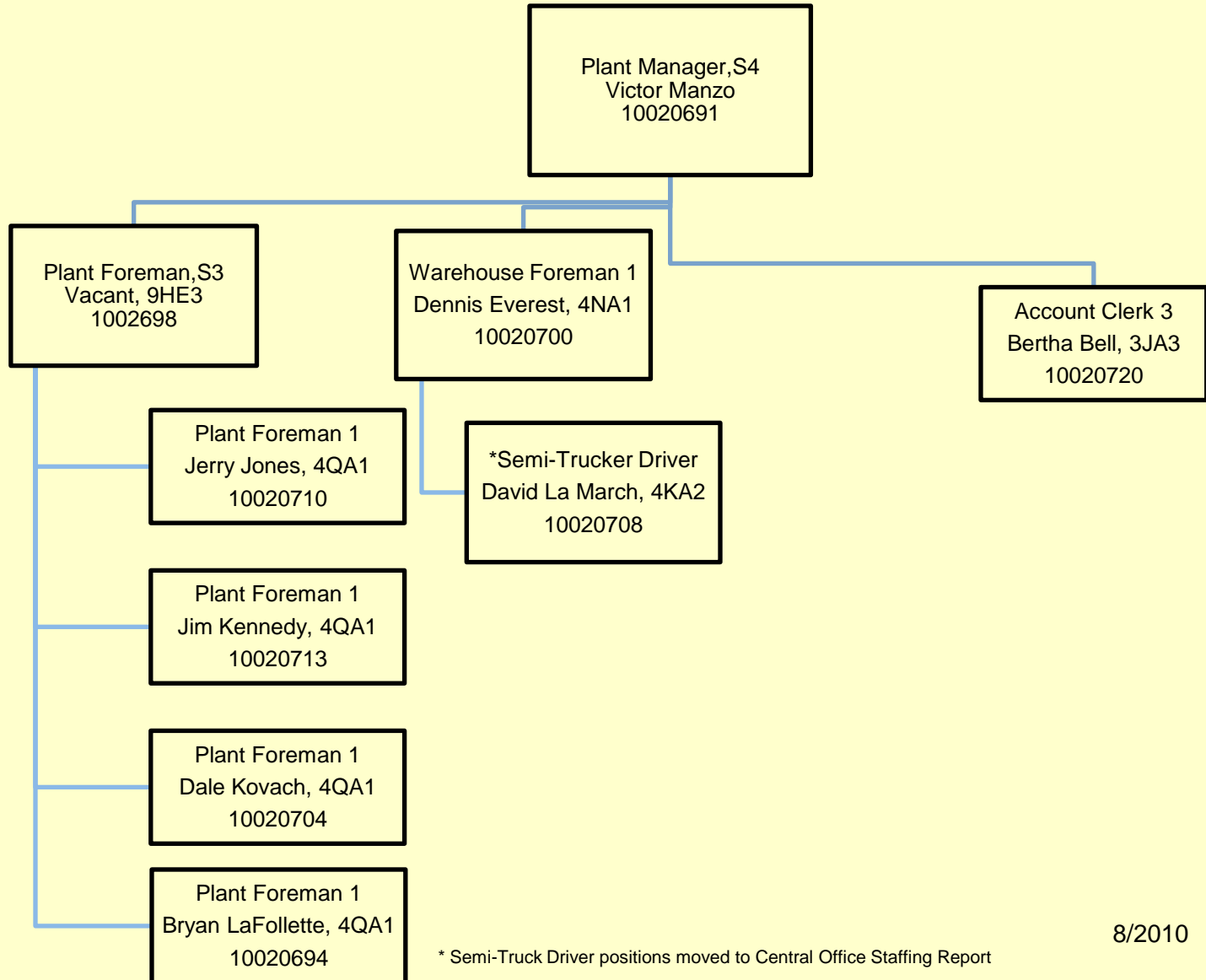
### Organizational Chart



# Rockville Correctional Facility PEN PRODUCTS Organizational Chart



# Wabash Valley Correctional Facility PEN PRODUCTS Organizational Chart



\* Semi-Truck Driver positions moved to Central Office Staffing Report

8/2010

# Westville Correctional Facility PEN PRODUCTS Organizational Chart

