



FSSA Budget Committee Presentation

Jennifer Walthall, MD MPH

December 10, 2018





Overview

- FSSA Mission
- FSSA Divisions
- New Team Members
- Agency Priorities
- 2018 Successes
- 2019 Legislative Priorities
- SFY 2020-2021 Budget Request

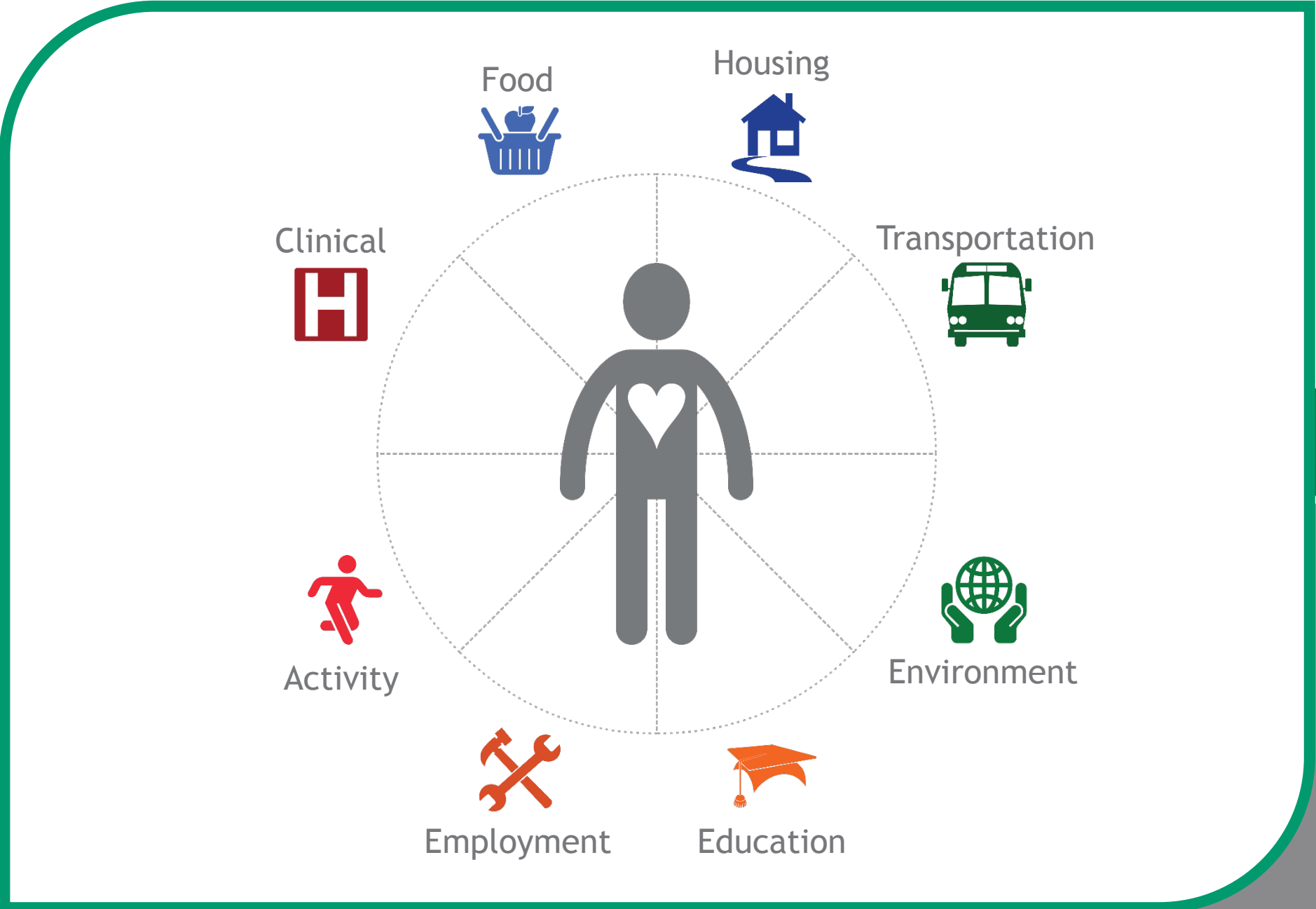
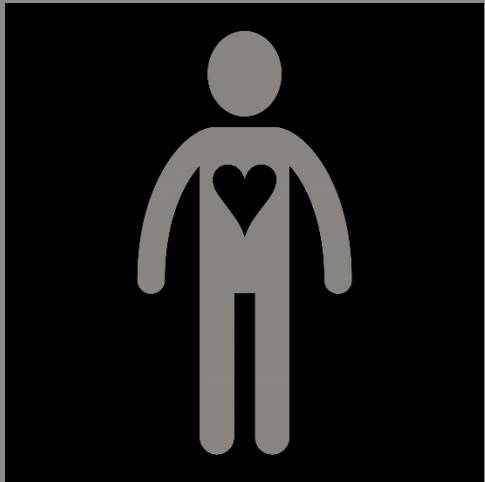




Sometimes I believe as many
as six impossible things
before breakfast.

—*Lewis Carroll*







FSSA Divisions





Division of Aging

The **Division of Aging** supports the development of alternatives to nursing home care and coordinates services through a network of area agencies on aging.

- Adult Protective Services
- Money Follows the Person
- Home- and Community-based services
- Long-term care ombudsman
- INconnect Alliance
- Golden Hoosier Awards





Division of Disability & Rehabilitative Services

The **Division of Disability & Rehabilitative Services** manages the delivery of services to children and adults with intellectual and developmental disabilities.

- Bureau of Developmental Disabilities Services
- Bureau of Quality Improvement
- First Steps
- Vocational Rehabilitation Services
- Blind & Visual Impaired Services
- Deaf & Hard-of-Hearing Services





Office of Early Childhood and Out-of-School Learning

The **Office of Early Childhood and Out-of-School Learning** supervises early care and education and out-of-school time programs.

- Paths to QUALITY
- Childcarefinder.in.gov
- Head Start/Early Head Start
- Becoming a child care provider
- Low-income assistance for child care
- On My Way Pre-K





Division of Family Resources

The **Division of Family Resources** receives applications and approves eligibility for Medicaid, Supplemental Nutrition Assistance Program (SNAP) and the cash assistance program, Temporary Assistance for Needy Families (TANF).

- Supplemental Nutrition Assistance Program (SNAP)
- Temporary Assistance for Needy Families (TANF)
- Refugee assistance
- Repatriation





Office of Medicaid Policy and Planning

The **Office of Medicaid Policy and Planning** administers health coverage programs, including the Healthy Indiana Plan, Hoosier Healthwise and other Indiana Medicaid programs.

- Healthy Indiana Plan (HIP)
- Hoosier Healthwise
- CHIP
- Breast & Cervical Cancer Program
- Hoosier Care Connect
- HoosierRx





Division of Mental Health and Addiction

The **Division of Mental Health and Addiction** works with a network of mental health care providers. DMHA operates six psychiatric hospitals and funds addiction prevention and treatment programs.

- Addiction services
- Mental health services
- Recovery works
- Indiana Primary Care and Behavioral Health Integration
- Opiate coordination





Disability Determination Bureau

The **Disability Determination Bureau** makes medical determinations of eligibility for Social Security Disability and Social Security Income

- Evaluate Impairment Severity
- Investigate Vocational Implications
- Determine Residual Functional Capacity





New team members





Welcome new team members

CMO and Healthy Opportunities Team





Welcome new team members

Data Team





Welcome new team members

Legislative Team





Welcome new team members

Division of Aging Leadership





Welcome new team members

OMPP Team





Welcome new team members

DDRS Associate Director Kim Opsahl, J.D.





Agency Priorities





Embrace the economy of trust

- Gateway to Work self-attestation
- Pre-K expansion and creativity
- DDRS Revamping person centered planning for HCBS





Support public health initiatives

- Infant mortality
- Community Health integration
- Opiates – SUD waiver
- Naloxone billing





Make the social service process easier, such that being a recipient is not a full-time job

- IEDSS project
- Communication initiative
- Envelope project
- EBT RFP
- Co-location
- DOC/Medicaid pilot
- TANF/SNAP/CCDF





Apply population health principles across healthcare, public health and social service networks to decrease variability and increase health equity

- Open source Medicaid data
- Healthy opportunities office
- 1102 Task Force ID/DD population





Weave social determinants of health into the fabric of health care delivery

- OpenBeds/2-1-1
- SNAP/TANF application
- Person-centered case management
- Non-emergency medical transportation





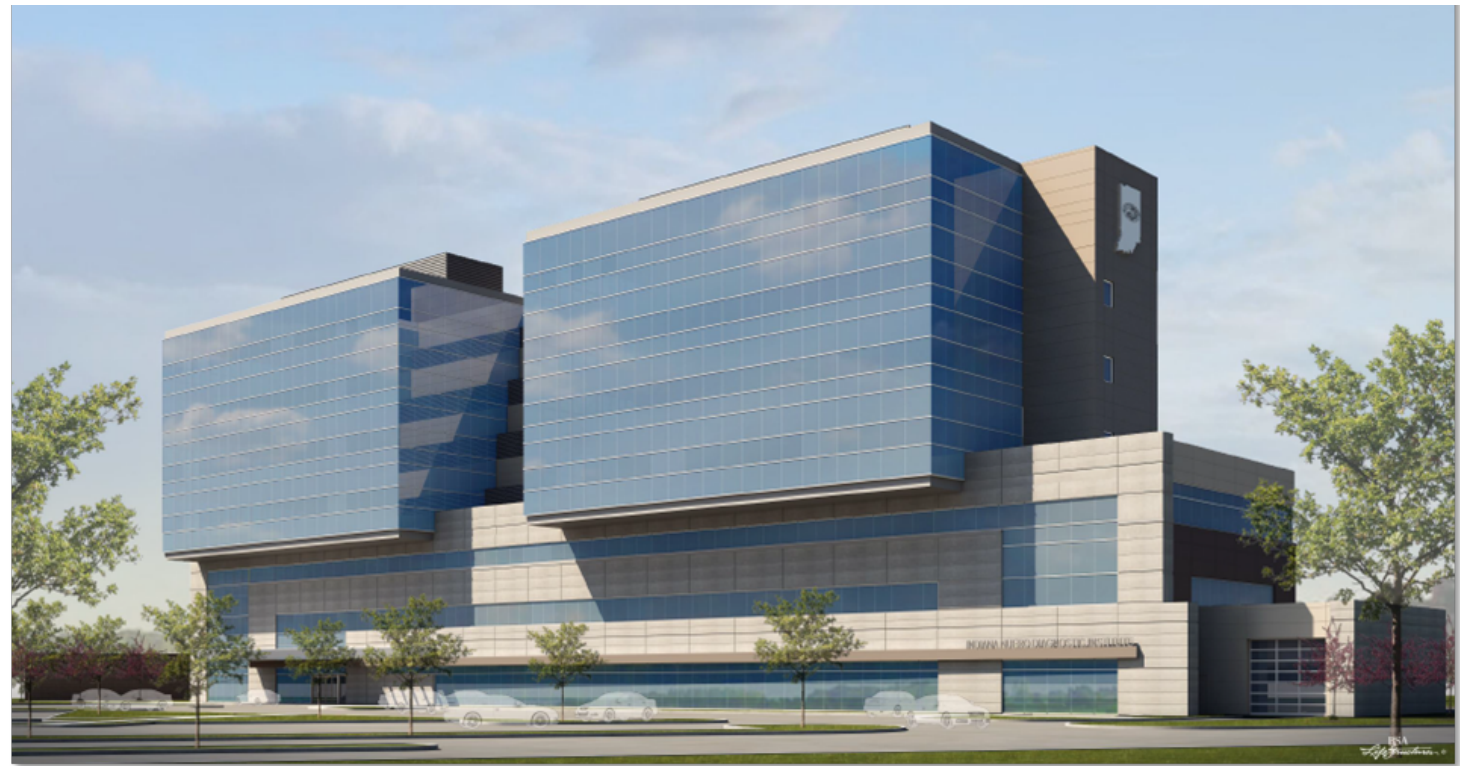
Be precise: Data matters at the macro-level, but even more at the micro-level

- Drug Dashboard
- NGA Data project
- MPH/OTP locations/bed assessment
- CMHC Medicaid data
- New expertise – data scientist, actuary, CMO





Indiana Neuro-Diagnostic Institute (NDI)





Benefits Portal

The screenshot shows the homepage of the FSA Benefits Portal. At the top left is the FSA logo. To the right are three buttons: 'LOGIN/REGISTER', 'CONTACT US', and 'NAVIGATOR'. Below these is the heading 'WELCOME TO THE FSA BENEFITS PORTAL' followed by the text 'Apply for SNAP, Cash Assistance, Health Coverage, or check the status of your case'. There are two orange buttons: 'APPLY FOR SNAP AND/OR CASH ASSISTANCE ONLINE' and 'APPLY FOR HEALTH COVERAGE ONLINE'. Below these are two white buttons: 'GO TO GATEWAY TO WORK' and 'CASE INFORMATION'. The background of the page features a photograph of a woman and four children holding hands and running in a field at sunset. At the bottom of the page, it says 'Indiana Family and Social Service Administration'.

Add Member Activity

Member:	ANGELA RUMMANS
Date *	10/25/2018
Category:*	Serve
Activity:*	Community Service
City *	Indianapolis
Location *	Salvation Army
Hours *	4
Description	Volunteered at the Salvation Army Ruth Lilly Women and Children's Center-Block of Hope 170 / 256
Activity Document:	<input type="text"/>
Document Type:	





FSSA EnCred

- One-stop shop for provider enrollment, credentialing, and profile updates. Will also capture revalidation / recredentialing.
- Goal is to reduce duplication of effort and deliver a single decision on enrollment and credentialing.
- Some functions will transition from DXC Technology and managed care entities (MCEs) to Conduent, Inc.
- MCEs will still need to collect some information from providers, such as banking information.
- **Go live is set for July 1, 2019.**





SMI/SED 1115 Waiver

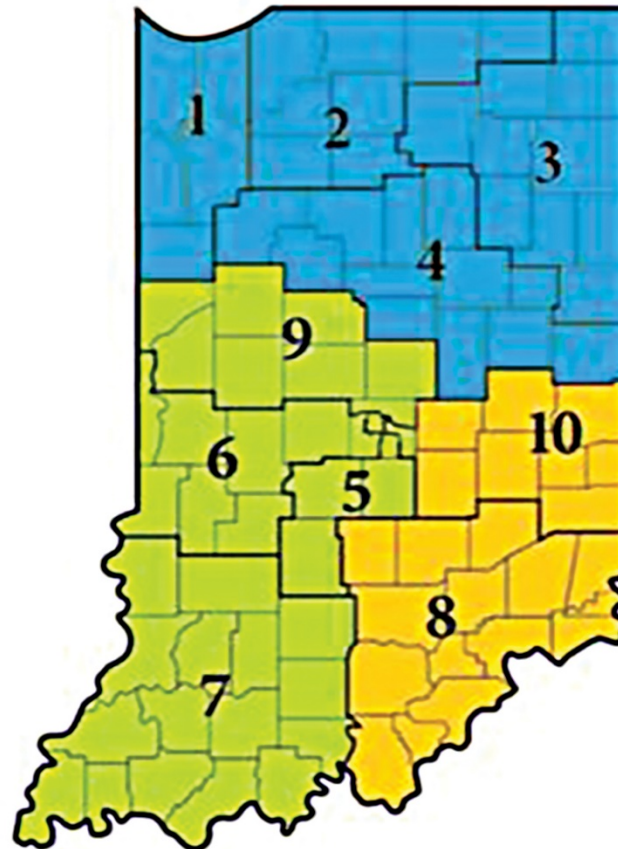
- The opportunity will allow states, upon CMS approval, to receive FFP for services furnished during short term stays for acute care in psychiatric hospitals or residential treatment settings that qualify as IMDs.
- States must ensure good quality of care in IMDs and improve access to community-based services.
- Allows access to earlier identification and engagement in treatment of conditions and improved access to mental health services through schools and increased development of data-sharing capabilities.





New Eligibility System

IEDSS Rollout Schedule



Wave 1

Go-Live 7/29/2019

Wave 2

(Including Marion County East)

Go-Live 9/30/2019

Pilot

(Excluding Marion County East)

Go-Live 4/29/2019





Gateway to Work

Gateway to Work is part of the Healthy Indiana Plan (HIP) and will start on **January 1, 2019**.

- Approx. 20% of HIP members will be required to engage and report hours completed in Gateway to Work Qualifying Activities.
- Required hours start at zero and phase-in over 18 months.
- Starting in July 1, 2020, required hours will be 80 hours per month for 8 of 12 months in a calendar year.





Gateway to Work (cont'd)

Gateway To Work Member-Friendly Resources

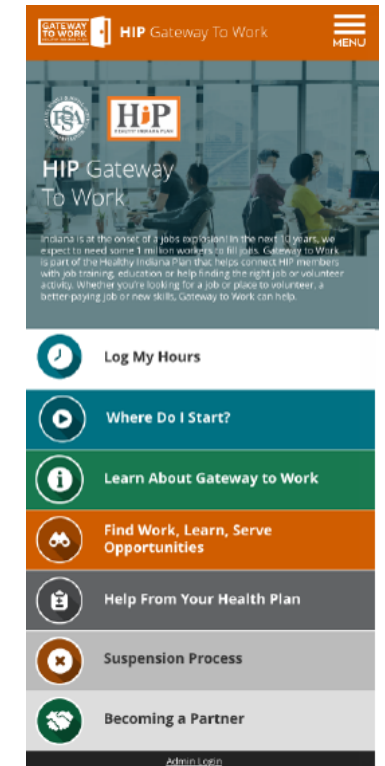
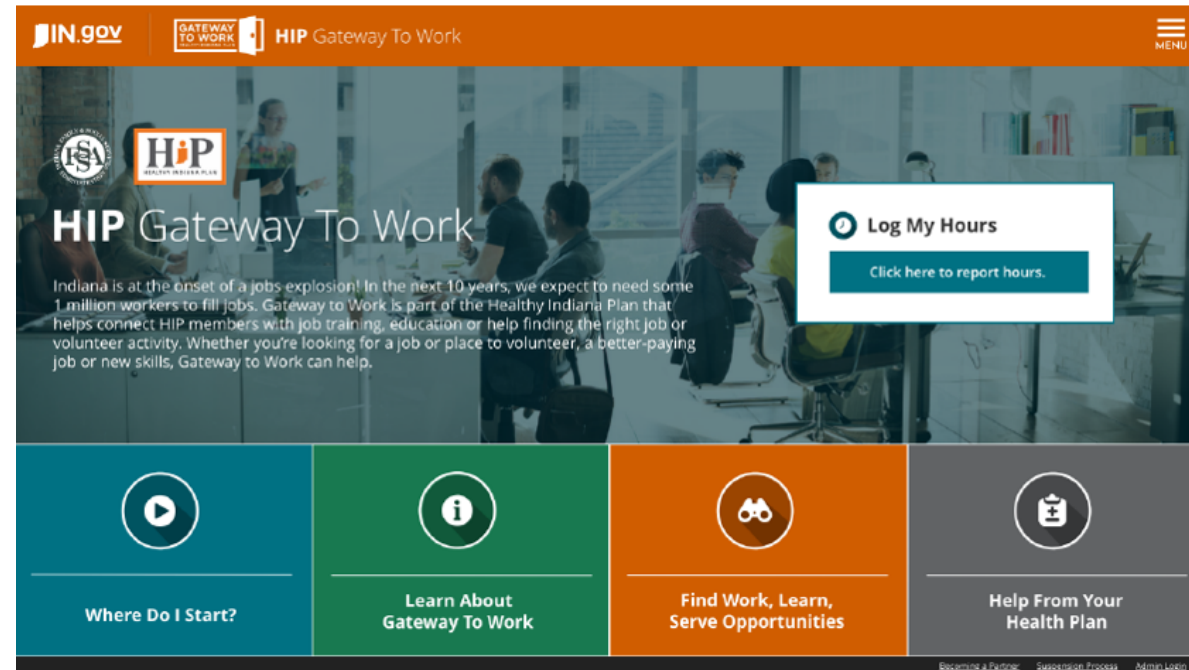
- **Website and searchable database**
- **Member assessment tool and recommendations**
- **Health plans assistance:** Education, communications and assistance to their members who can't utilize web based resources
- **Hours reporting online via the FSSA Benefit Portal**
- **Hours reporting via phone:** Health plans can take hours over the phone and record
- **Monthly status:** Gateway to Work status will be included on member's monthly POWER Account statement starting in March 2019





Gateway to Work (cont'd)

Gateway to Work Website effective Jan. 2019





Gateway to Work (cont'd)

Gateway to Work is partnering with Indiana nonprofits, religious organizations, government agencies and businesses

- Partner may offer a program and/or a resource including:
 - Volunteer opportunities
 - Public computer access
 - Programs related to qualifying activities
 - Assist HIP Members with the Gateway to Work program
- **Database:** Partners will be listed in the searchable database for HIP members to identify local programs and resources.
- **Partner details** can be found at www.HIP.IN.gov click “Gateway to Work” and click “Partners” or email FSSA.GatewayToWork@fssa.in.gov.





NEMT

- Central hub service to enhance transportation benefit to Fee-For-Service Medicaid members
- Improved visibility to close gaps in coverage
- Enhanced member service through single number/portal
- Improved EMS policy





NEMT (cont'd)

- **SFY2018:** 240,000 individuals in traditional Medicaid; ridership between 30,000 to 35,000 rides a month; around 3,000 unique members served each month
- **Since 6/1/18:** Average 42,500 rides a month; 5,000 unique members each month; upwards of 14,000 unique members have been served since June 1, 2018
- Providers required to drive most direct route
- 246 active providers with 20+ in credentialing process; an additional 4 to 5 signing on each week and over 1,200 vehicles on road





NEMT (cont'd)

- Claims payment rate is 99+ percent, claims processed and paid the same week for those using EFT
- Over 1,200 vehicles on road
- Expanded the gas reimbursement program
- Call center stats stabilized – over 100 Indiana staff plus dedicated nursing facility line





First Steps

- Strengthen comprehensive system of professional development to ensure qualified personnel
 - Leveraging CURES funding to support providers working with families with substance use disorder
 - Updated and simplified First Steps Policy Manual around credentialing to support recruitment and retention of providers
- Collaboration across early childhood systems
 - Supporting ISDH & DCS in implementing Help Me Grow Indiana
 - Collaborating with early childhood partners to improve and build a consistent transition process



First Steps



Vocational Rehabilitation

- VR Vision: High-quality program that is effective, equitable and sustainable
- Since implementing order of selection on August 1, 2017:
 - 71% of eligible individuals prioritized for services
 - 29% of eligible individuals deferred
 - Information on other organizations and resources are shared with individuals deferred





2018 Successes





2018 Successes

- Community health worker integration
- Department of Corrections/Medicaid enrollment
- HIP renewal
- Substance use disorder waiver
- Expanded On My Way Pre-K to 20 counties
- Methadone policy turns one
- First statewide judicial MAT conference





2018 Successes (cont'd)

- SNAP Timeliness rate of 99 percent
- 21st Century Cures grant administration
- OpenBeds/2-1-1 program
- Expansion of opioid treatment programs
- Online payment system for First Steps
- Logansport State Hospital turns 130





2018 Successes (cont'd)

- Home & Community Based Services waiver amendment for direct service professional wages
- Implementation of LifeCourse framework innovation in case management
- APS 211 24-hour call center
- Social determinants of health assessment tool
- Leadership development program: Natural Born Pilots
- Open Source Medicaid data hub





2019 Legislative Priorities





Governor Holcomb's Pillars

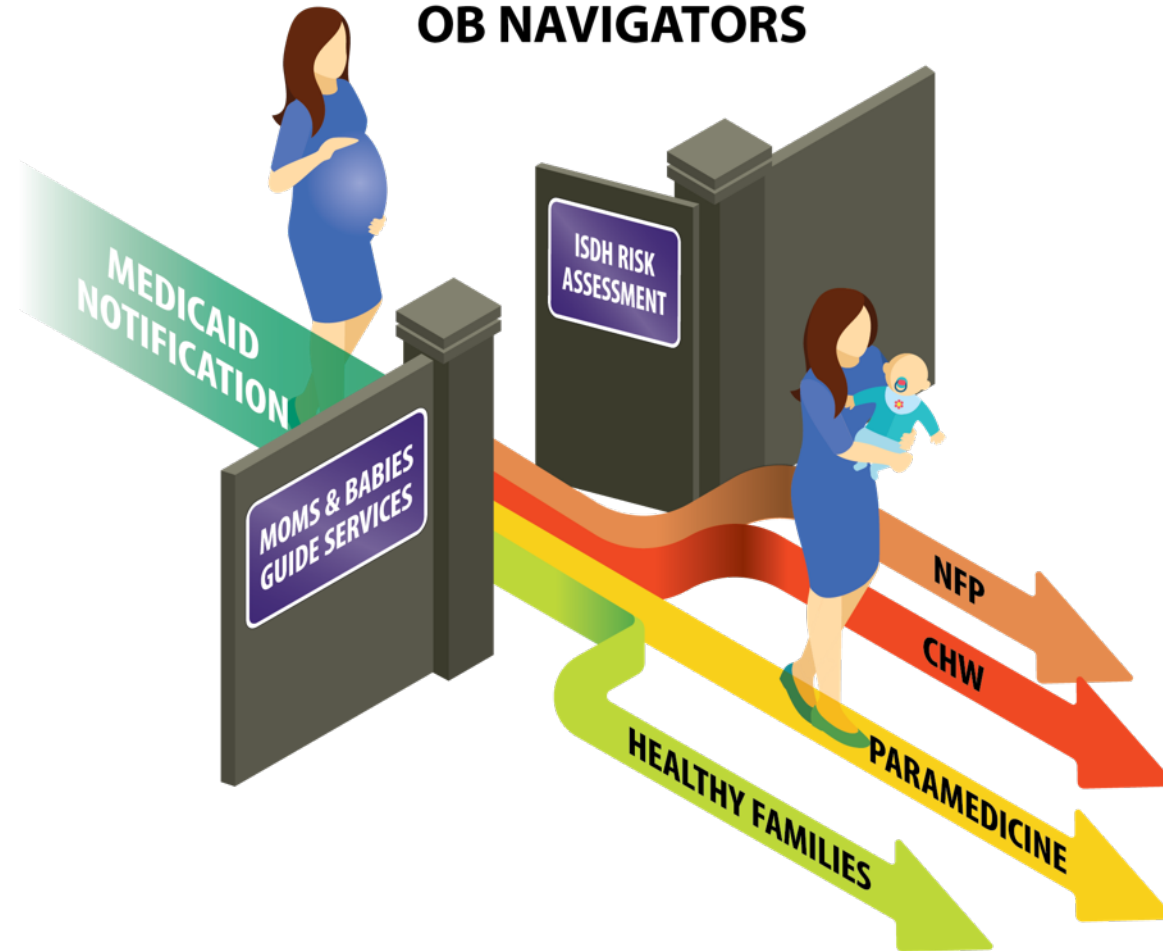
1. Economy
2. Workforce
3. Infrastructure
4. Opiate Epidemic
5. Great Government Service
6. Civility





OB Navigator

OB NAVIGATORS





Fixing the Cliff: HIP Bridge



If people are constantly falling off a cliff, you could place ambulances under the cliff or build a fence on the top of the cliff. We are placing all too many ambulances under the cliff.

—*Dr. Burkitt*





SFY 2020-2021 Budget Request



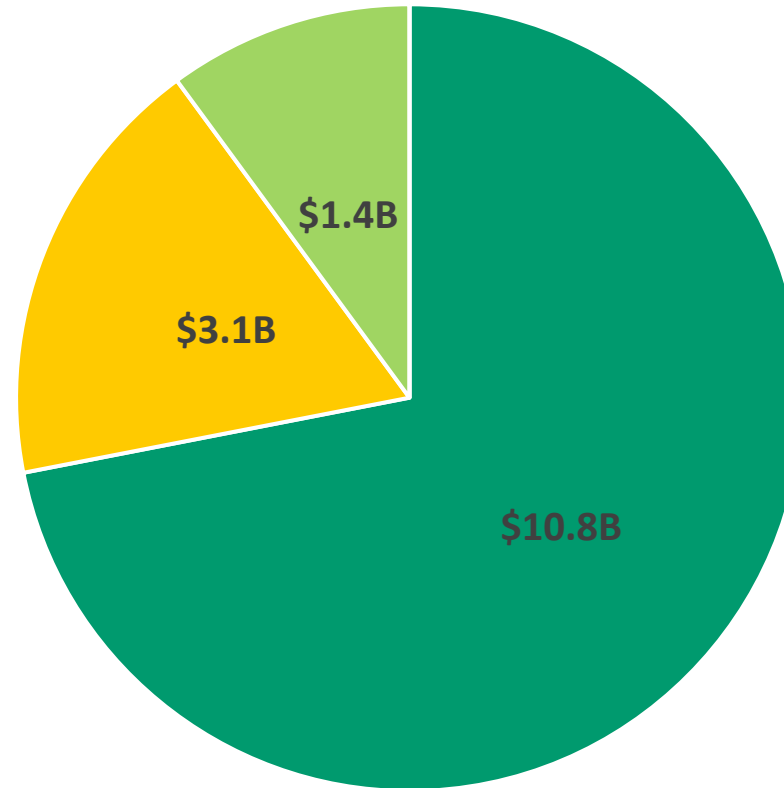


Medicaid Forecast

- Medicaid Forecast will be presented at December 17th Budget Committee Meeting.



Current Funding Breakdown



■ Federal ■ State ■ Dedicated



Appropriation Request

	General Fund	Dedicated	Total
Current Appropriation SFY2019	745,349,334	83,487,026	828,836,360
Base	639,903,934	64,305,968	704,209,902
Change	(105,445,401)	(19,181,058)	(124,626,459)
SFY 2020 Change Package Request	14,779,383	22,922,551	37,701,934
Total Funding Request SFY2020	654,683,317	87,228,519	741,911,836
Increase from Current Approp.	(90,666,018)	3,741,493	(86,924,525)
SFY2021 Change Package Request	13,920,383	50,993,507	64,913,890
Total Funding Request SFY2021	653,824,317	115,299,475	769,123,792
Increase from Current Approp.	(91,525,018)	31,812,449	(59,712,569)



Summary of Change Packages

- Increase in CHIP appropriation of \$18.9M in SFY2020 and \$43.7M in SFY2021
- New appropriation of \$1.5M in SFY2020 and 2021 for School Safety program
- Adjustment to State psychiatric hospitals funding to account for closing of Larue Carter and opening of new NDI facility. \$11.9M in SFY 2020 and \$14.3M in SFY2021
- Appropriation for 3.3% salary increase in the amount of \$3.7M annually



Consolidations Included in Request

- \$92.9M in funding moved from Residential Services to Medicaid Assistance
- Centers for Independent Living appropriations consolidated into one appropriation
- Medical Assistance for Wards (\$13.1M) and Hospital Care for the Indigent (\$29.5M) appropriations added in as part of Medicaid Assistance Appropriation



Questions & Contact Information

Jennifer Walthall, Secretary:

Jennifer.Walthall@fssa.in.gov

FSSA Website: www.fssa.in.gov

Follow us on Twitter:

[@FSSAIndiana](https://twitter.com/FSSAIndiana)

[@confectionsmd](https://twitter.com/confectionsmd)

