

Indiana State Department of Health

**State Budget Committee
Biennium Budget Presentation
December 10, 2018**

Kris Box, MD, FACOG
State Health Commissioner



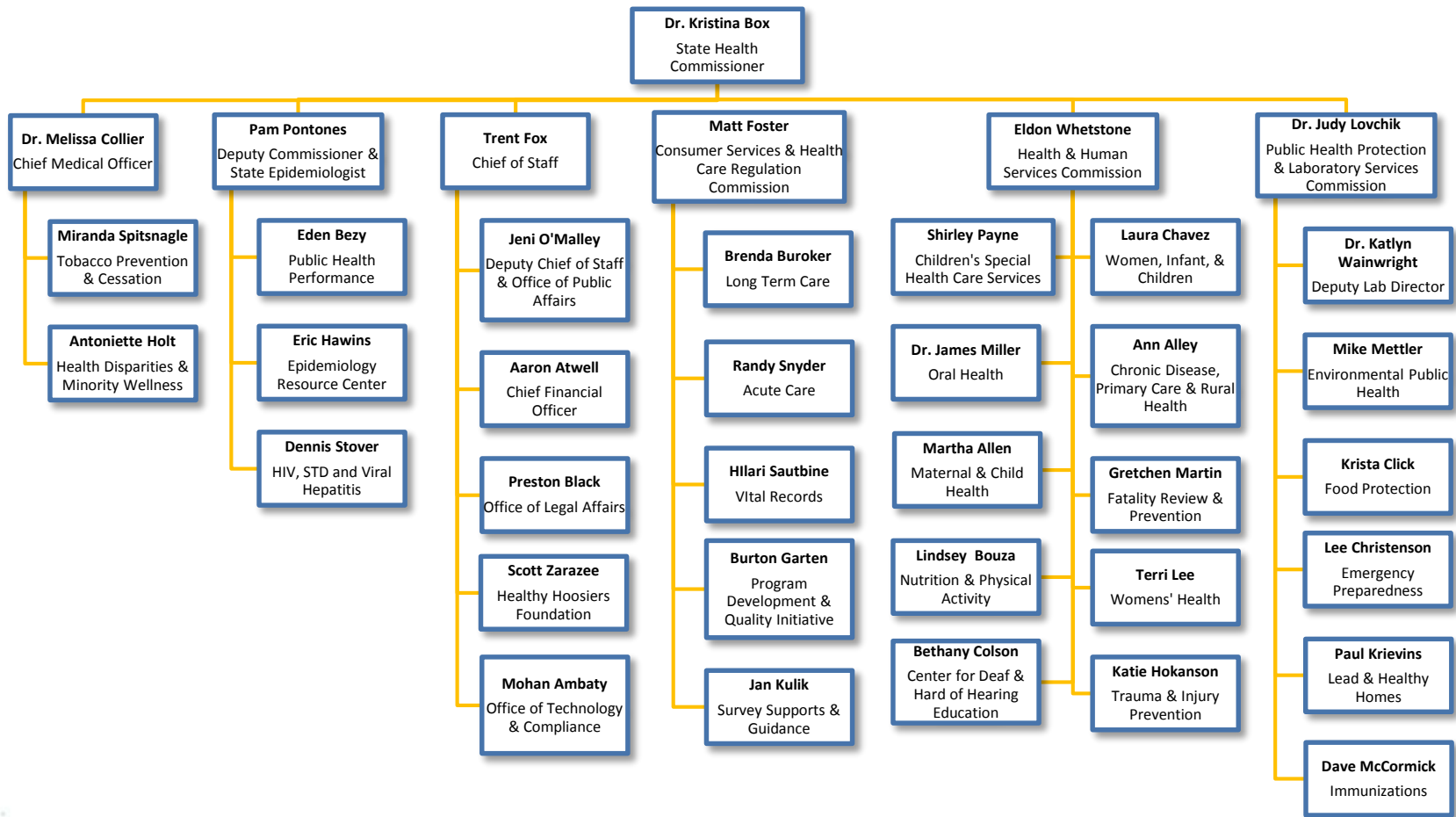
Indiana State
Department of Health

ISDH Mission & Vision

- ISDH Mission
 - To promote, protect, and improve the health and safety of all Hoosiers
- ISDH Vision
 - A healthier and safer Indiana

Agency Structure

- State Health Commissioner
 - Deputy Health Commissioner
 - Chief of Staff
 - Chief Medical Officer
 - Assistant Commissioners (3)
- Three Commissions
 - Health and Human Services
 - Consumer Services & Health Care Regulation
 - Public Health Protection and Laboratory Services



ISDH Priorities

- Infant Mortality
- Opioid Epidemic
- Smoking Cessation
- Obesity/Chronic Disease

Infant Mortality

- The 2016 infant mortality rate was 7.5 deaths per 1000 live births – that means 623 babies didn't make it to their first birthday
- Indiana has lost nearly 3,000 babies in the past five years
- 7th highest infant mortality in the nation
- 3rd highest maternal mortality in the nation

Infant Mortality: Roadmap to 2024

- Perinatal Levels of Care
- OB Navigator for at-risk populations through Medicaid
- Investment in APRN or CNM for rural areas, care closer to home
- Identify mothers with prior preterm birth/IM progesterone
- Hypertension Pilot to decrease the risk of severe preeclampsia
- Decrease maternal smoking
- Maternal Mortality Review Committee/IPQIC Hemorrhage Committee
- Safe Sleep Campaign
- Perinatal Substance Use/NAS

Opioid Epidemic

- 785 opioid-involved overdose deaths in 2016
 - 52% of drug overdose deaths involve opioids
 - 1,518 total drug overdose deaths in 2016
- 1,138 opioid-involved overdose deaths in 2017
 - 63% of drug overdose deaths involve opioids
 - 1,809 total drug overdose deaths in 2017
- 6,934 people treated in ED for opioid overdose in 2016
- 8,169 people treated in ED for opioid overdose in 2017

Opioid Epidemic

- Naloxone distribution and training
- Faith-based Outreach
- Overdose Response Project/Toolkit
- Coroner Toxicology Program
- IU Hospital pilot to analyze drug trends
- Overdose Fatality Review
- Syringe Service and Harm Reduction Sites
- Fresh Start Recovery Centers

Smoking Cessation: Impact

- 10th highest smoking rate in the nation - 21% adults
- 13.5% pregnant women smoke (2x the national average)
- 24% Medicaid moms smoke
- 2018 data shows 45% increase in high school seniors vaping

Smoking Cessation: Cost

- Single most preventable cause of death and disease
- 11,100 Hoosier lives lost due to tobacco use every year
- Everyone shares in the costs for smoking – over \$900 per Hoosier household per year
- Nearly \$3 billion annually in medical expenditures/\$3.1 billion annually in lost productivity
- For every pack of cigarettes sold in Indiana, the state spends \$15.90 in health care costs, lost productivity and premature death related to tobacco

Smoking Cessation

- Indiana Tobacco Quitline
- Baby & Me Tobacco Free
- Medicaid coverage for FDA-approved smoking cessation treatments
- Community-based tobacco control partnerships

Obesity/Chronic Disease

- 12th most obese state in the nation
- 2/3 adults overweight or have obesity
- 1/3 children overweight or have obesity
- Obesity increases risk for hypertension and diabetes, thereby increasing heart disease and stroke
- \$3.5 billion in obesity related health care costs per year
 - 37% of these costs are covered by Medicaid or Medicare

Obesity/Chronic Disease

- Help fund bicycle and pedestrian master plans in selected communities
- Fund physical activity trainings for child care program staff
- Help schools find creative ways to incorporate more physical activity, including physical activity ideas for students with disabilities
- Increase access to healthy foods through SNAP education and encouraging farmers market managers to accept SNAP/WIC benefits
- Train employers on worksite wellness best practices
- Train community wellness coordinators on best practices for obesity prevention
- WIC collaboration with hospitals
- National Diabetes Prevention Program

Other Top Priorities

- Ensure preparedness for infectious disease outbreaks and other public health emergencies
- Strategic partnerships
- Quality improvement
 - PHAB Accreditation
 - ISDH Strategic Plan
 - State Health Improvement Plan

Agency Updates

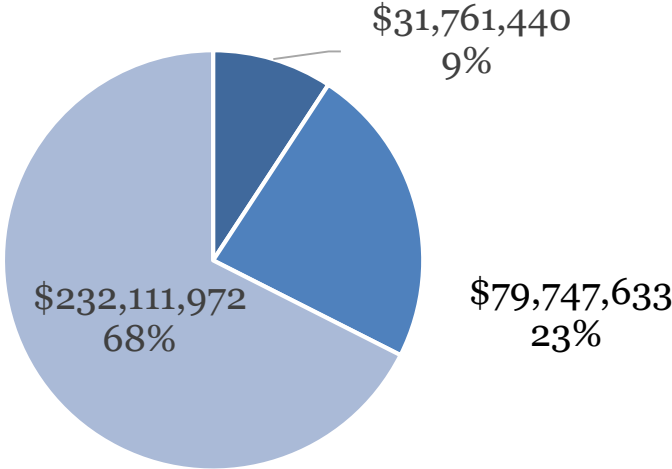
- Hepatitis A Outbreak Response
- Vital Records System Upgrade
- Cervical Cancer Strategic Plan
- Maternal Mortality Review



SFY 20-21 Budget Request

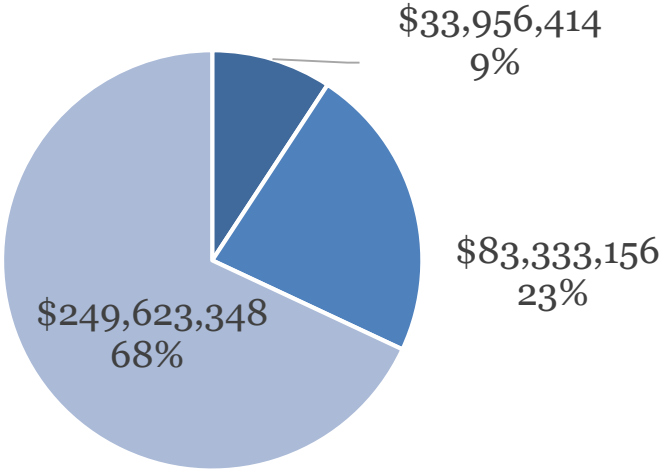
ISDH Funding Sources

SFY 19



- General Fund
- Dedicated Funds
- Federal Funds

SFY 20 - 21



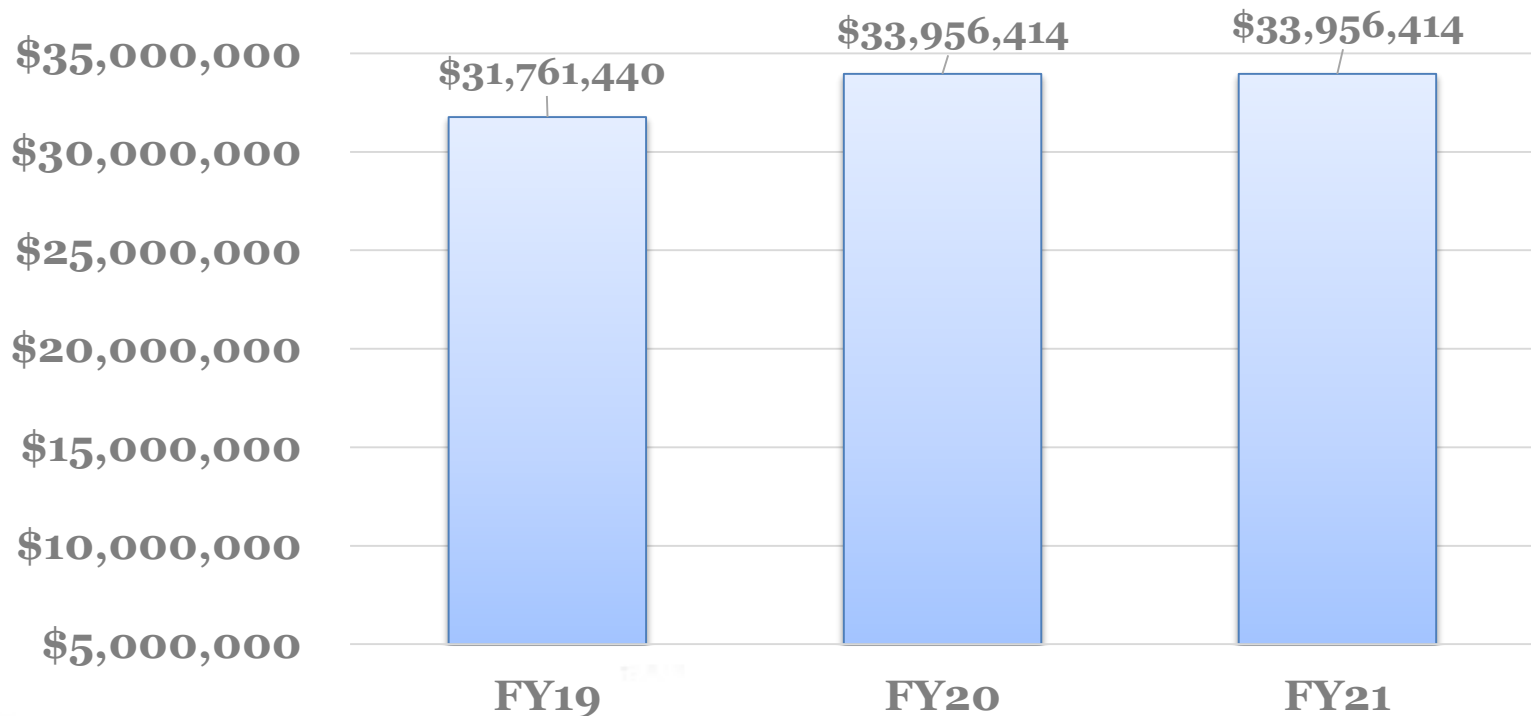
- General Fund
- Dedicated Funds
- Federal Funds

ISDH Budget Request

State Fiscal Year	Total State Appropriation (General & Dedicated)
SFY 2018	\$111.5 million
Base Budget	\$107.9 million
Requested for SFY 2020	\$117.3 million
Requested for SFY 2021	\$117.3 million

General Fund Request

General Fund Portion of ISDH Budget



Change Packages

1. OB Navigator Program – \$6.6 million (\$3.3M/Year)
 - Establish an obstetric (OB) navigator program to connect pregnant women on Medicaid with a community health worker, targeting the state’s highest risk zip codes and counties for infant mortality.
2. Youth Risk Behavior Survey (YRBS) - \$2.2 million (\$1.1M/year)
 - Administer the YRBS in all Indiana high schools (public and nonpublic) to provide schools and communities with better data to monitor and implement informed responses to risks and threats facing our children in school.

Questions



Indiana State
Department of Health