

NORTHWEST INDIANA TRANSIT DEVELOPMENT DISTRICTS

Beverly Shores/Pines

Public Hearing #1

05/08/2025



AGENDA

What we will discuss

1 Beverly Shores/Pines TDD Boundary

A map of the Beverly Shores/Pines area, showing the TDD boundary. The map is overlaid with a dark blue semi-transparent rectangle. A yellow line with circular markers traces a path along the left and top edges of the rectangle. A green line with circular markers traces a path along the bottom and right edges of the rectangle. The background is a light gray map showing streets and land parcels.

Beverly Shores: 34.4 acres
Town of Pines: 130.9 acres

Town of Pines: 130.9 acres

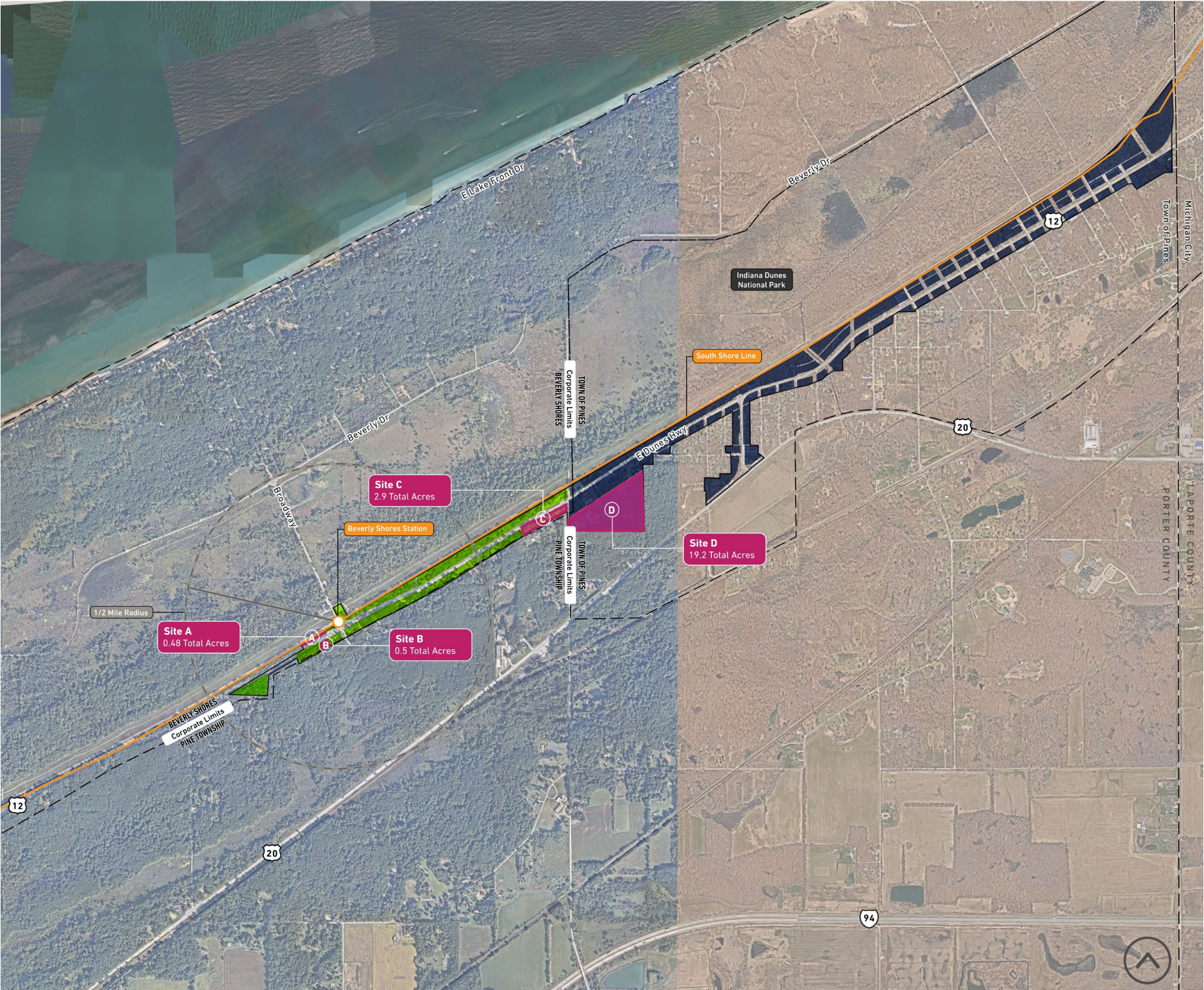


BEVERLY SHORES/PINES OPPORTUNITY SITES

Total Acres: 165.3 acres

Beverly Shores: 34.4 acres

Town of Pines: 130.9 acres



BEVERLY SHORES/PINES MEETINGS & KEY MILESTONES

- 6/12/2025 – TDD Public Hearing #2 - upcoming
- 5/8/2025 – TDD Public Hearing #1
- 3/12/2025 – Beverly Shores LOS Received
- 2/12/2025 – Pines LOS Received
- **1/8/2025 – Public Engagement Session**
- **4/23/2024 – Public Engagement Session**
- 8/19/2024 – Review Session with Beverly Shores and Pines
- 2/10/2021 – Initial Engagement with Beverly Shores and Pines

RDA TDD BOUNDARY PUBLIC COMMENT PERIOD

The RDA Board of Directors will receive public comment on the TDD Boundary limited to the following:

- Persons wishing to comment will need to sign up, write, and verbally state their name and address while approaching the podium
- For persons attending virtually:
 - » Please type your name and address in the chat function if you wish to make a comment and you will be called on individually
 - » When called on, state your name and address verbally
 - » If you wish to make a comment in writing only, please type your name and address in the chat function along with your comment or send via email to dwellman@rda.in.gov
- Public comments will be limited to three minutes per person
- Only comments related to the TDD boundaries will be in order
- Commentary on NICTD and rail planning of TOD developments within each community will be ruled out of order