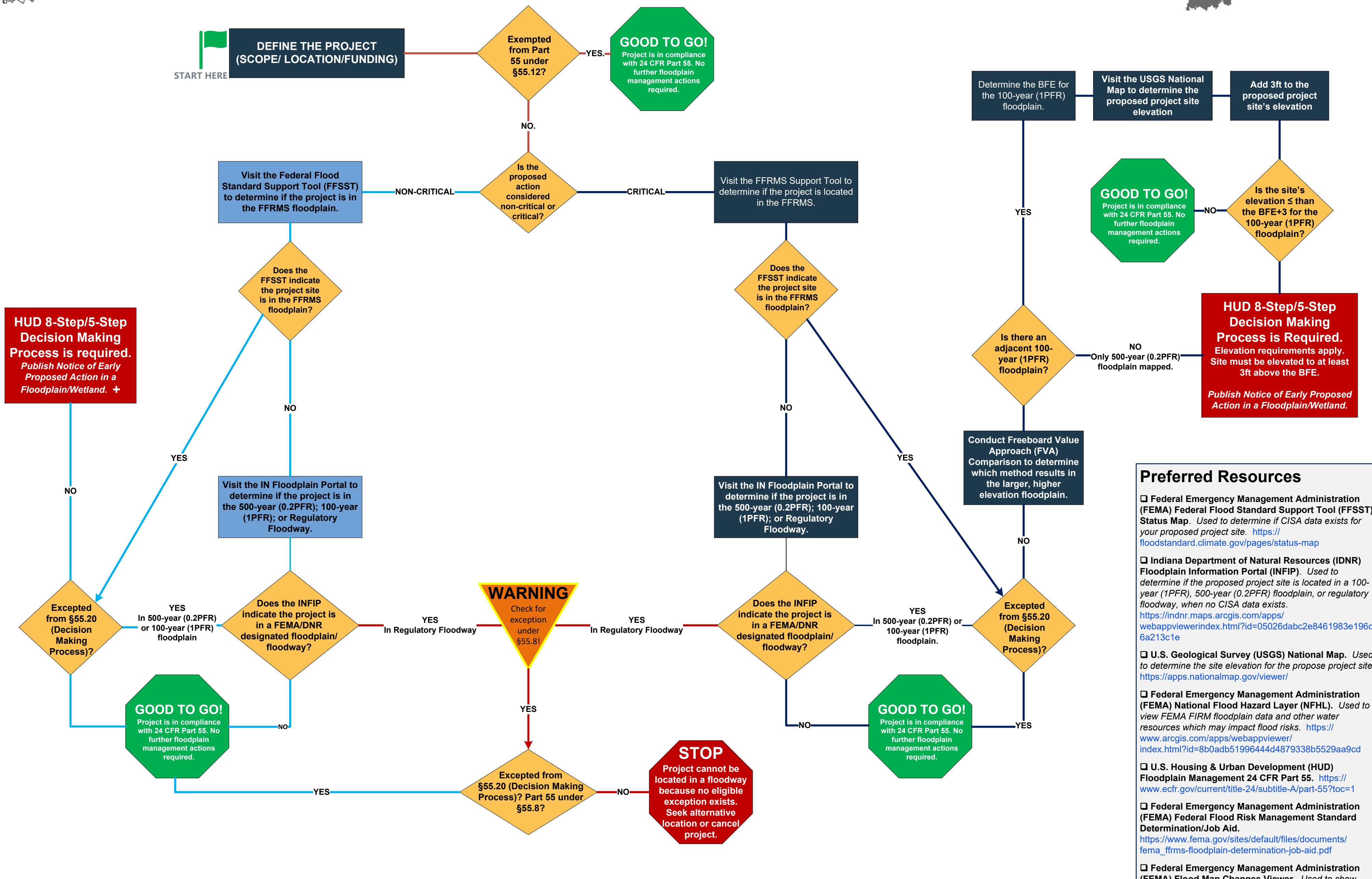


State CDBG Program 24 CFR Part 55 FFRMS Process Flow



- ### Preferred Resources
- Federal Emergency Management Administration (FEMA) Federal Flood Standard Support Tool (FFSST) Status Map. Used to determine if CISA data exists for your proposed project site. <https://floodstandard.climate.gov/pages/status-map>
 - Indiana Department of Natural Resources (IDNR) Floodplain Information Portal (INFIP). Used to determine if the proposed project site is located in a 100-year (1PFR), 500-year (0.2PFR) floodplain, or regulatory floodway, when no CISA data exists. <https://indnr.maps.arcgis.com/apps/webappviewer/index.html?id=05026dabc2e8461983e196d56a213c1e>
 - U.S. Geological Survey (USGS) National Map. Used to determine the site elevation for the proposed project site. <https://apps.nationalmap.gov/viewer/>
 - Federal Emergency Management Administration (FEMA) National Flood Hazard Layer (NFHL). Used to view FEMA FIRM floodplain data and other water resources which may impact flood risks. <https://www.arcgis.com/apps/webappviewer/index.html?id=8b0adb51996444d4879338b5529aa9cd>
 - U.S. Housing & Urban Development (HUD) Floodplain Management 24 CFR Part 55. <https://www.ecfr.gov/current/title-24/subtitle-A/part-55?toc=1>
 - Federal Emergency Management Administration (FEMA) Federal Flood Risk Management Standard Determination/Job Aid. https://www.fema.gov/sites/default/files/documents/fema_ffrms-floodplain-determination-job-aid.pdf
 - Federal Emergency Management Administration (FEMA) Flood Map Changes Viewer. Used to show pending changes/updates to FEMA FIRMS mapping. <https://fema.maps.arcgis.com/apps/webappviewer/index.html?id=e7a7dc3ebd7f4ad39bb8e485bb64ce44&extent=-8918605.50792118,4606308.619686073,-8918482.49207882,4606485.380313927,102100&level=19>

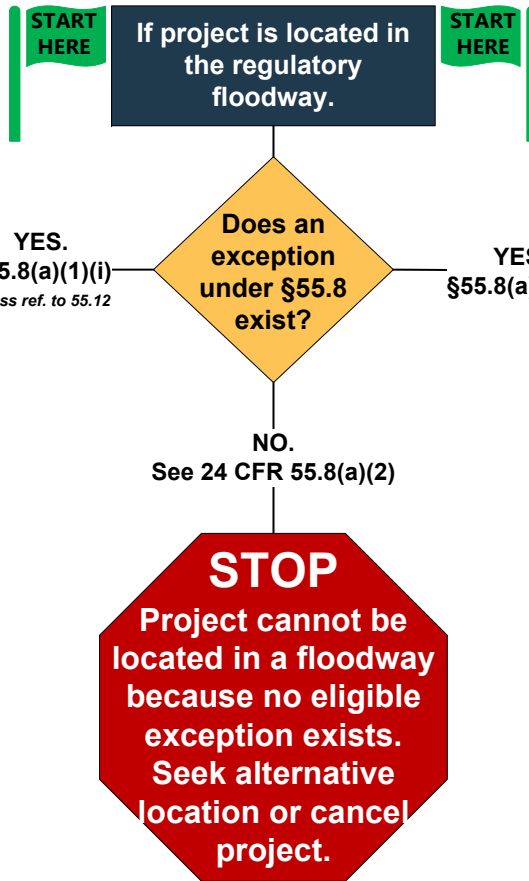
+ Although the project may not be a critical action, elevation requirements (BFE+2) may still apply. Consult an engineer or qualified environmental professional to determine if elevation or other hazard mitigation strategies must be implemented.

* For critical actions, elevation requirements apply (BFE+3). Consult an engineer or qualified environmental professional to determine if elevation or other hazard mitigation strategies must be implemented.

* Based on "best available data", it was determined the proposed project site is located in the 500-year (0.2PFR) floodplain. However, there is no nearby 100-year (1PFR) floodplain for base flood elevation reference. Elevation requirements still apply (BFE+3) because this is a critical action. Consult an engineer or qualified environmental professional to determine the best way to implement the elevation requirements and other mitigation strategies, as required by 24 CFR Part 55.

CHECK THE APPROPRIATE EXEMPTION

- §55.12(a)** – Activity is Exempt or CENST under §58.34 and 58.35
- §55.12(c)** – Activity is restoration/preservation of beneficial functions of floodplain/wetland and a permanent covenant restricts land use to flood control, wetland protection, open green space, or a park.
- §55.12(f)** – A minor amendment to a previously approved action so long as it does not adversely impact the floodplain/wetland.
- §55.12(g)** – An “incidental” portion of the project site is in the floodplain but there are no existing buildings or improvements within the floodplain and no new buildings or improvements will be added.
- §55.12(i)** – Activity is for the removal of material/architectural barriers that restrict mobility/accessibility for persons with disabilities.



CHECK THE APPROPRIATE EXEMPTION

- §55.8(a)(1)(ii)** – A permanent covenant/restriction will preserve onsite FFRMS floodplain and/or wetland areas from future development & expansion of existing uses. May include rehabilitation/reconstruction of properties affected by Presidentially declared disasters, does not occur within the regulatory floodway and won't expand footprint/capacity.
- §55.8(a)(1)(ii)(A)** – Activity is a functionally dependent use that must be necessarily located close/adjacent to water (e.g., dams, marinas, ports, waterfront parks, bridges, walking trails).
- §55.8(a)(1)(ii)(B)** – Activity is limited to de minimis improvements including minimal ground disturbance or placement of impervious surface area for improved accessibility, and it will not increase floodplain.
- §55.8(a)(1)(ii)(C)** – Activity is limited to removal/clearance of buildings and improvements in the floodway or floodplain.

START
HERE

If the Decision Making
Process Applies...

START
HERE

CHECK THE APPROPRIATE EXEMPTION

- ☐ **§55.14(c)** – Activity involves the repair, rehabilitation, modernization, weatherization, or improvement of multi-family housing; long-term care facilities such as hospitals, nursing homes, assisted living facilities, board/care facilities, intermediate care facilities; and one-to-four-family properties.
- ☐ **§55.14(d)** – Activity involves the repair, rehabilitation, modernization, weatherization, or improvement of existing non-residential buildings and structures.
- ☐ **§55.14(e)** – Activity involves the repair, rehabilitation, replacement of existing nonstructural improvements such as streets, curbs, and gutters where increases in impervious surface areas are de minimis.



YES

YES.
§55.8(a)(1)(ii)

HUD 8-Step/5-Step Decision Making Process is required.
*Publish Notice of Early Proposed Action in a Floodplain/Wetland. **

END HERE.

END HERE.



NO.

STOP
Community is NOT participating in NFIP. Activities must be relocated outside the floodplain or cancelled.



YES.

YES.

8-Step Process is required.
Publish Notice of Early Proposed Action in a Floodplain/Wetland.

NO.



YES.