

IHCP *bulletin*

INDIANA HEALTH COVERAGE PROGRAMS

BT2025169

NOVEMBER 26, 2025

IHCP and DDARS announce changes to waiver services, effective Jan. 1, 2026

The Indiana Health Coverage Programs (IHCP), Office of Medicaid Policy and Planning (OMPP), and the Division of Disability, Aging and Rehabilitative Services (DDARS) announce changes to waiver services for the Community Integration and Habilitation (CIH), Family Supports (FS), Health and Wellness (H&W), Indiana PathWays for Aging (PathWays), and Traumatic Brain Injury (TBI) waivers, pending approval from the Centers for Medicare & Medicaid Services (CMS). The DDARS will be sunsetting some services and adding new services to these waivers.

Behavior Management, Basic, available on the CIH and FS waivers will be end dated and replaced with the new Behavioral Support Services model. Beginning Jan. 1, 2026, Behavioral Support Services will be authorized quarterly instead of annually, and will include three unique components:

- Consultation – limited to three hours a month
- Comprehensive – limited to 12 hours a month or 144 hours a year
- Functional behavioral assessment (FBA) – 20 hours total within 60 days

Beginning Jan. 1, 2026, self-directed service options will be made available on the CIH, FS, H&W, TBI and PathWays waivers. These services will be authorized annually to allow for life of plan and will be authorized based upon a self-directed budget calculation that includes the member's assessed needs and limitations within the services and waiver they are utilizing. Members will now have the ability to self-direct the following services:

- CIH: Residential Habilitation and Support (hourly) RH10 and RH20, Respite, and Workplace Assistance
- FS: Participant Assistance and Care, Respite, and Workplace Assistance
- H&W, TBI and PathWays: Attendant Care, Respite Care Services, and Home and Community Assistance

Effective Dec. 31, 2025, the DDARS and OMPP will be sunsetting several services for CIH, FS, H&W, TBI and PathWays waivers, which are reflected in [Table 1](#). These services will no longer be available after Dec. 31, 2025. The DDARS will also add several new services to CIH, FS, H&W, TBI and PathWays waivers as presented in [Table 2](#), effective Jan. 1, 2026.

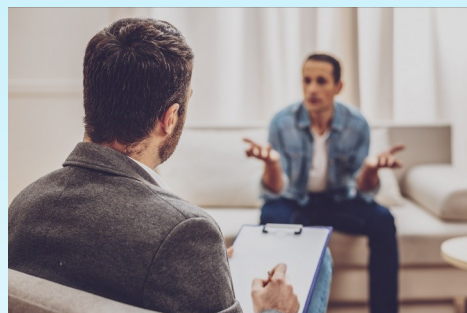


Table 1 – Waiver services being sunsetted, effective Dec. 31, 2025

Procedure code	Modifiers	Service description	Waiver
H0004	U7 U5 U2	Behavior Management, Basic	CIH, FS
H2020	U7 U5 U1	Intensive Behavioral Intervention, Level 1	CIH, FS
H2020	U7 U5 U2	Intensive Behavioral Intervention, Level 2	CIH, FS
S5125	U7 U1	Attendant Care, Consumer-Directed	H&W, PathWays
S5125	U7 U1 TU	Attendant Care, Consumer-Directed Overtime	H&W, PathWays
S5125	U7 U2 UA	Participant-Directed Home Care Services (PDHCS) – Skilled	H&W, PathWays
S5125	U7 U2 U9	Participant-Directed Attendant Care (PDAC) – Unskilled	H&W, PathWays

Table 2 – Waiver services added, effective Jan. 1, 2026

Procedure code	Modifiers	Service description	Rate	Time/Limit	Waiver
H0004	U7 U5 UA	Behavior Management, Consultation	\$18.56	Per 15 minutes; limited to three hours/month	CIH, FS
H0004	U7 U5 UB	Behavior Management, Comprehensive	\$18.56	Per 15 min.; limited to 12 hours/month or 144 hours/year	CIH, FS
H0004	U7 U5 UC	Behavior Management, FBA	\$18.56	Per 15 minutes; 20 hours total over 60 days	CIH, FS
S5125	U7 U1 UB	Attendant Care, Self-Directed	Budgeted	Per hour	H&W, TBI, PathWays
S5130	U7 U9	Self-Directed Home and Community Assistance	Budgeted	Per hour	H&W, TBI, PathWays
S5150	U7 UA U9 U1	Self-Directed Respite Care Services, HHA	Budgeted	Per hour	H&W, TBI, PathWays
S5151	U7 U5 U9	Self-Directed Respite Care Services, HHA	Budgeted	Per hour	CIH, FS
T1005	U7 UA U1 TE	Self-Directed Respite Care Services, LPN	Budgeted	Per hour	H&W, TBI, PathWays
T1005	U7 UA U1 TD	Self-Directed Respite Care Services, RN	Budgeted	Per hour	H&W, TBI, PathWays
T1016	U7 U5 U8	Self-Directed Residential Habilitation (RH2O)	Budgeted	Per hour	CIH
T1016	U7 U5 UA U8	Self-Directed Residential Habilitation (RH1O)	Budgeted	Per hour	CIH
T1020	U7 U5 UA	Self-Directed Workplace Assistance	Budgeted	Per hour	CIH, FS
T2025	U7 UA	Extended Services – Employment Support	\$52.85	Per hour	H&W, TBI
T2033	U7 U5 UA	Self-Directed Participant Assistance & Care (PAC)	Budgeted	Per hour	FS
T2040	U7 U5	Benefits Counseling	\$50.00	Per hour	CIH, FS
T2040	U7	Benefits Counseling	\$50.00	Per hour	H&W, TBI

QUESTIONS?

If you have questions about this publication, please contact Customer Assistance at 800-457-4584.

COPIES OF THIS PUBLICATION

If you need additional copies of this publication, please download them from the [IHCP Bulletins](#) page of the IHCP provider website at in.gov/medicaid/providers.

SIGN UP FOR IHCP EMAIL NOTIFICATIONS

To receive email notices of IHCP publications, subscribe by clicking the blue subscription envelope or sign up from the [IHCP provider website](#) at in.gov/medicaid/providers.

