

IHCP *bulletin*

INDIANA HEALTH COVERAGE PROGRAMS BT202288 OCTOBER 4, 2022

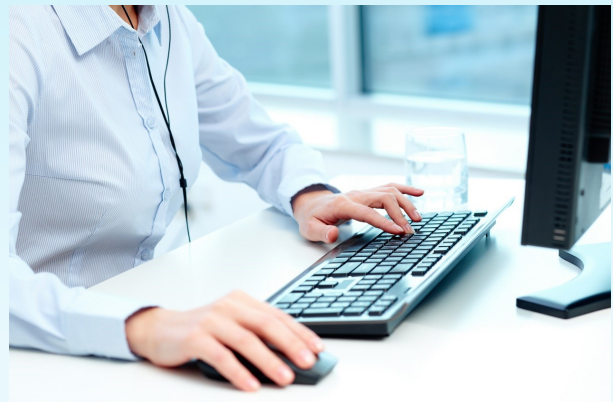
Annual update of ICD-10 codes is effective Oct. 1, 2022

The annual update of the International Classification of Diseases, Tenth Revision (ICD-10) Clinical Modification (CM) diagnosis codes and Procedure Coding System (PCS) procedure codes will be effective for the Indiana Health Coverage Programs (IHCP) on Oct. 1, 2022 (federal fiscal year [FFY] 2023). The IHCP has updated its policies to reflect the updates to the ICD-10-CM and ICD-10-PCS codes.

To review the full list of new, revised and discontinued ICD codes, see the [2023 ICD-10-CM](#) page and the [2023 ICD-10-PCS](#) page on the Centers for Medicare & Medicaid Services (CMS) website at [cms.gov](https://www.cms.gov).

See the following sections in this bulletin for more information:

- [Behavioral and Primary Healthcare Coordination](#)
- [Behavioral health services – Bridge appointments](#)
- [Family Planning Eligibility Program](#)
- [Hospital-acquired conditions \(HACs\) and present-on-admission \(POA\) codes](#)
- [Medicaid Rehabilitation Option](#)
- [Obstetrical and gynecological services – High-risk pregnancy](#)
- [Presumptive Eligibility for Pregnant Women](#)
- [Renal dialysis](#)



Updates to the *Emergency Department Autopay List* for managed care health plans will be announced in a future bulletin.

QUESTIONS?

If you have questions about this publication, please contact Customer Assistance at 800-457-4584.

TO PRINT

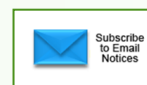
A [printer-friendly version](#) of this publication, in black and white and without photos, is available for your convenience.

COPIES OF THIS PUBLICATION

If you need additional copies of this publication, please download them from the [Bulletins](#) page of the IHCP provider website at in.gov/medicaid/providers.

SIGN UP FOR IHCP EMAIL NOTIFICATIONS

To receive email notices of IHCP publications, subscribe by clicking the blue subscription envelope or sign up from the [IHCP provider website](#) at in.gov/medicaid/providers.



Behavioral and Primary Healthcare Coordination

The Behavioral and Primary Healthcare Coordination (BPHC) program was designed to help individuals with serious mental illness (SMI) and co-occurring physical healthcare needs manage their care by providing logistical support, advocacy, and education. The BPHC service is targeted to individuals who meet the BPHC eligibility criteria, which includes a qualifying primary mental health diagnosis.

Effective for DOS on or after Oct. 1, 2022, the IHCP will add the diagnosis codes in Table 1 to the list of qualifying BPHC diagnosis codes. Corresponding updates will be made to *Behavioral and Primary Healthcare Coordination (BPHC) Codes*, accessible from the [Codes Sets](#) page at in.gov/medicaid/providers.

Table 1 – Qualifying ICD-10 diagnosis codes added for BPHC, effective for DOS on or after Oct. 1, 2022

Diagnosis code	Description
F1090	Alcohol use, unspecified, uncomplicated
F1091	Alcohol use, unspecified, in remission
F1191	Opioid use, unspecified, in remission
F1291	Cannabis use, unspecified, in remission
F1391	Sedative, hypnotic or anxiolytic use, unspecified, in remission
F1491	Cocaine use, unspecified, in remission
F1591	Other stimulant use, unspecified, in remission
F1691	Hallucinogen use, unspecified, in remission
F1891	Inhalant use, unspecified, in remission
F1991	Other psychoactive substance use, unspecified, in remission
T43652D	Poisoning by methamphetamines intentional self-harm, subsequent encounter
T43652S	Poisoning by methamphetamines intentional self-harm, sequela

Behavioral health services– Bridge appointments

Bridge appointments are follow-up appointments after inpatient hospitalization for behavioral health issues, when no outpatient appointment is available within seven days of discharge. Members must have an appropriate diagnosis to justify the medical necessity of a bridge appointment. For more information, see the *Behavioral Health Services* provider reference module.

Effective for DOS on or after Oct. 1, 2022, the ICD-10 diagnosis codes in Table 2 will be added to the list of allowable diagnosis codes for bridge appointments. This update will be reflected in the ICD-10 Diagnosis Codes for Bridge Appointments table on *Behavioral Health Services Codes*, accessible from the *Code Sets* page at in.gov/medicaid/providers.

Table 2 – Qualifying ICD-10 diagnosis codes added for bridge appointments, effective for DOS on or after Oct. 1, 2022

Diagnosis code	Description
F01511	Vascular dementia, unspecified severity, with agitation
F01518	Vascular dementia, unspecified severity, with other behavioral disturbance
F0152	Vascular dementia, unspecified severity, with psychotic disturbance
F0153	Vascular dementia, unspecified severity, with mood disturbance
F0154	Vascular dementia, unspecified severity, with anxiety
F01A0	Vascular dementia, mild, without behavioral disturbance, psychotic disturbance, mood disturbance, and anxiety
F01A11	Vascular dementia, mild, with agitation
F01A18	Vascular dementia, mild, with other behavioral disturbance
F01A2	Vascular dementia, mild, with psychotic disturbance
F01A3	Vascular dementia, mild, with mood disturbance
F01A4	Vascular dementia, mild, with anxiety

Table 2 – Qualifying ICD-10 diagnosis codes added for bridge appointments, effective for DOS on or after Oct. 1, 2022

Diagnosis code	Description
F01B0	Vascular dementia, moderate, without behavioral disturbance, psychotic disturbance, mood disturbance, and anxiety
F01B11	Vascular dementia, moderate, with agitation
F01B18	Vascular dementia, moderate, with other behavioral disturbance
F01B2	Vascular dementia, moderate, with psychotic disturbance
F01B3	Vascular dementia, moderate, with mood disturbance
F01B4	Vascular dementia, moderate, with anxiety
F01C0	Vascular dementia, severe, without behavioral disturbance, psychotic disturbance, mood disturbance, and anxiety
F01C11	Vascular dementia, severe, with agitation
F01C18	Vascular dementia, severe, with other behavioral disturbance
F01C2	Vascular dementia, severe, with psychotic disturbance
F01C3	Vascular dementia, severe, with mood disturbance
F01C4	Vascular dementia, severe, with anxiety
F02811	Dementia in other diseases classified elsewhere, unspecified severity, with agitation
F02818	Dementia in other diseases classified elsewhere, unspecified severity, with other behavioral disturbance
F0282	Dementia in other diseases classified elsewhere, unspecified severity, with psychotic disturbance
F0283	Dementia in other diseases classified elsewhere, unspecified severity, with mood disturbance
F0284	Dementia in other diseases classified elsewhere, unspecified severity, with anxiety
F02A0	Dementia in other diseases classified elsewhere, mild, without behavioral disturbance, psychotic disturbance, mood disturbance, and anxiety
F02A11	Dementia in other diseases classified elsewhere, mild, with agitation
F02A18	Dementia in other diseases classified elsewhere, mild, with other behavioral disturbance
F02A2	Dementia in other diseases classified elsewhere, mild, with psychotic disturbance
F02A3	Dementia in other diseases classified elsewhere, mild, with mood disturbance
F02A4	Dementia in other diseases classified elsewhere, mild, with anxiety
F02B0	Dementia in other diseases classified elsewhere, moderate, without behavioral disturbance, psychotic disturbance, mood disturbance, and anxiety
F02B11	Dementia in other diseases classified elsewhere, moderate, with agitation
F02B18	Dementia in other diseases classified elsewhere, moderate, with other behavioral disturbance
F02B2	Dementia in other diseases classified elsewhere, moderate, with psychotic disturbance
F02B3	Dementia in other diseases classified elsewhere, moderate, with mood disturbance
F02B4	Dementia in other diseases classified elsewhere, moderate, with anxiety
F02C0	Dementia in other diseases classified elsewhere, severe, without behavioral disturbance, psychotic disturbance, mood disturbance, and anxiety
F02C11	Dementia in other diseases classified elsewhere, severe, with agitation
F02C18	Dementia in other diseases classified elsewhere, severe, with other behavioral disturbance
F02C2	Dementia in other diseases classified elsewhere, severe, with psychotic disturbance
F02C3	Dementia in other diseases classified elsewhere, severe, with mood disturbance
F02C4	Dementia in other diseases classified elsewhere, severe, with anxiety
F03911	Unspecified dementia, unspecified severity, with agitation
F03918	Unspecified dementia, unspecified severity, with other behavioral disturbance
F0392	Unspecified dementia, unspecified severity, with psychotic disturbance
F0393	Unspecified dementia, unspecified severity, with mood disturbance
F0394	Unspecified dementia, unspecified severity, with anxiety
F03A0	Unspecified dementia, mild, without behavioral disturbance, psychotic disturbance, mood disturbance, and anxiety
F03A11	Unspecified dementia, mild, with agitation
F03A18	Unspecified dementia, mild, with other behavioral disturbance
F03A2	Unspecified dementia, mild, with psychotic disturbance
F03A3	Unspecified dementia, mild, with mood disturbance
F03A4	Unspecified dementia, mild, with anxiety

Table 2 – Qualifying ICD-10 diagnosis codes added for bridge appointments, effective for DOS on or after Oct. 1, 2022

Diagnosis code	Description
F03B0	Unspecified dementia, moderate, without behavioral disturbance, psychotic disturbance, mood disturbance, and anxiety
F03B11	Unspecified dementia, moderate, with agitation
F03B18	Unspecified dementia, moderate, with other behavioral disturbance
F03B2	Unspecified dementia, moderate, with psychotic disturbance
F03B3	Unspecified dementia, moderate, with mood disturbance
F03B4	Unspecified dementia, moderate, with anxiety
F03C0	Unspecified dementia, severe, without behavioral disturbance, psychotic disturbance, mood disturbance, and anxiety
F03C11	Unspecified dementia, severe, with agitation
F03C18	Unspecified dementia, severe, with other behavioral disturbance
F03C2	Unspecified dementia, severe, with psychotic disturbance
F03C3	Unspecified dementia, severe, with mood disturbance
F03C4	Unspecified dementia, severe, with anxiety
F0670	Mild neurocognitive disorder due to known physiological condition without behavioral disturbance
F0671	Mild neurocognitive disorder due to known physiological condition with behavioral disturbance
F1090	Alcohol use, unspecified, uncomplicated
F1091	Alcohol use, unspecified, in remission
F1191	Opioid use, unspecified, in remission
F1291	Cannabis use, unspecified, in remission
F1391	Sedative, hypnotic or anxiolytic use, unspecified, in remission
F1491	Cocaine use, unspecified, in remission
F1591	Other stimulant use, unspecified, in remission
F1691	Hallucinogen use, unspecified, in remission
F1891	Inhalant use, unspecified, in remission
F4381	Prolonged grief disorder
F4389	Other reactions to severe stress
T43652D	Poisoning by methamphetamines intentional self-harm, subsequent encounter
T43652S	Poisoning by methamphetamines intentional self-harm, sequela

Family Planning Eligibility Program

When billing for services provided to Family Planning Eligibility Program members, providers must use appropriate diagnosis codes for the claim, as described in the [Family Planning Eligibility Program](#) provider reference module.

Effective Oct. 1, 2022, the diagnosis codes listed in Table 3 may be used when billing for services provided to Family Planning Eligibility Program members. These diagnosis codes will be added to the applicable table in *Family Planning Eligibility Program Codes*, accessible from the [Code Sets](#) page at in.gov/medicaid/providers.

Table 3 – Qualifying ICD-10 diagnosis codes added for the Family Planning Eligibility Program, effective Oct. 1, 2022

Diagnosis code	Description
B3731	Acute candidiasis of vulva and vagina
B3732	Chronic candidiasis of vulva and vagina
N7682	Fournier disease of vagina and vulva

HAC and POA

The IHCP follows the CMS determinations for hospital-acquired conditions (HACs) that will not be considered for payment if the diagnoses were not present on admission (POA). The IHCP also follows the CMS determination for

codes exempt from POA reporting. The [ICD-10 HAC Diagnoses](#) and the [ICD-10 Diagnosis Codes Exempt from POA](#), effective Oct. 1, 2022, are available as downloadable files on the CMS website at [cms.gov](https://www.cms.gov).

Medicaid Rehabilitation Option

Medicaid Rehabilitation Option (MRO) services are designed to assist in the rehabilitation of a member's optimum functional ability in daily living. IHCP members with a qualifying diagnosis and level of need (LON) may be eligible for an MRO service package in addition to the outpatient behavioral health services covered under their existing benefit plan.

Effective for DOS on or after Oct. 1, 2022, the diagnosis codes in Table 4 will be added as qualifying behavioral health diagnoses for MRO services. Note that separate diagnosis lists are used for adults (Adults Needs and Strengths Assessment – ANSA), and children or adolescents (Child and Adolescent Needs and Strengths – CANS).

A "Yes" under the ANSA or CANS column indicates a qualifying MRO diagnosis for the applicable age group. A member must have at least one qualifying diagnosis to be eligible for an MRO service package. The qualifying diagnosis for each member must be entered in the Division of Mental Health and Addiction (DMHA) Data Assessment Registry for Mental Health and Addiction (DARMHA) database for a service package to be assigned. For more information, see the [Medicaid Rehabilitation Option Services](#) provider reference module.

The diagnosis codes in Table 4 will be added to the applicable table in *Medicaid Rehabilitation Option (MRO) Services Codes*, accessible from the [Code Sets](#) page at in.gov/medicaid/providers.

Table 4 – Qualifying ICD-10 diagnosis codes added for MRO services, effective for DOS on or after Oct. 1, 2022

Diagnosis code	Description	ANSA	CANS
F1090	Alcohol use, unspecified, uncomplicated	Yes	Yes
F1091	Alcohol use, unspecified, in remission	Yes	Yes
F1191	Opioid use, unspecified, in remission	Yes	Yes
F1291	Cannabis use, unspecified, in remission	Yes	Yes
F1391	Sedative, hypnotic or anxiolytic use, unspecified, in remission	Yes	Yes
F1491	Cocaine use, unspecified, in remission	Yes	Yes
F1591	Other stimulant use, unspecified, in remission	Yes	Yes
F1691	Hallucinogen use, unspecified, in remission	Yes	Yes
F1891	Inhalant use, unspecified, in remission	Yes	Yes
F1991	Other psychoactive substance use, unspecified, in remission	Yes	Yes
T43652D	Poisoning by methamphetamines intentional self-harm, subsequent encounter	Yes	Yes
T43652S	Poisoning by methamphetamines intentional self-harm, sequela	Yes	Yes

Obstetrical and gynecological services – High-risk pregnancy

Risk factors that may adversely affect the outcome of a pregnancy if not adequately treated may place the member in a high-risk pregnancy category that requires greater prenatal care management. Therefore, the IHCP reimburses physicians, physician assistants and advanced practice registered nurses (APRNs) practicing obstetrics an additional \$10 per prenatal-visit procedure code when the provider indicates a high-risk pregnancy diagnosis code on the claim. Additionally, members identified as high-risk may receive extra prenatal care visits beyond the maximum of 14 allowed for a normal pregnancy. Claims for these additional visits must indicate one of the high-risk pregnancy diagnosis codes. For additional requirements, see the *Obstetrical and Gynecological Services* provider reference module.

Effective Oct. 1, 2022, the diagnosis codes in Table 5 will be added to the list of high-risk-pregnancy diagnosis codes that allow for increased reimbursement and additional visits for prenatal care. These diagnosis codes are listed in the *ICD-10 Diagnosis Codes for High-Risk Pregnancy* table in *Obstetrical and Gynecological Services Codes*, accessible from the [Code Sets](#) page at in.gov/medicaid/providers.

Table 5 – ICD-10 diagnosis codes added for high-risk pregnancy, effective Oct. 1, 2022

Diagnosis code	Description
O3500X0	Maternal care for (suspected) central nervous system malformation or damage in fetus, unspecified, not applicable or unspecified
O3500X1	Maternal care for (suspected) central nervous system malformation or damage in fetus, unspecified, fetus 1
O3500X2	Maternal care for (suspected) central nervous system malformation or damage in fetus, unspecified, fetus 2
O3500X3	Maternal care for (suspected) central nervous system malformation or damage in fetus, unspecified, fetus 3
O3500X4	Maternal care for (suspected) central nervous system malformation or damage in fetus, unspecified, fetus 4
O3500X5	Maternal care for (suspected) central nervous system malformation or damage in fetus, unspecified, fetus 5
O3500X9	Maternal care for (suspected) central nervous system malformation or damage in fetus, unspecified, other fetus
O3501X0	Maternal care for (suspected) central nervous system malformation or damage in fetus, agenesis of the corpus callosum, not applicable or unspecified
O3501X1	Maternal care for (suspected) central nervous system malformation or damage in fetus, agenesis of the corpus callosum, fetus 1
O3501X2	Maternal care for (suspected) central nervous system malformation or damage in fetus, agenesis of the corpus callosum, fetus 2
O3501X3	Maternal care for (suspected) central nervous system malformation or damage in fetus, agenesis of the corpus callosum, fetus 3
O3501X4	Maternal care for (suspected) central nervous system malformation or damage in fetus, agenesis of the corpus callosum, fetus 4
O3501X5	Maternal care for (suspected) central nervous system malformation or damage in fetus, agenesis of the corpus callosum, fetus 5
O3501X9	Maternal care for (suspected) central nervous system malformation or damage in fetus, agenesis of the corpus callosum, other fetus
O3502X0	Maternal care for (suspected) central nervous system malformation or damage in fetus, anencephaly, not applicable or unspecified
O3502X1	Maternal care for (suspected) central nervous system malformation or damage in fetus, anencephaly, fetus 1
O3502X2	Maternal care for (suspected) central nervous system malformation or damage in fetus, anencephaly, fetus 2
O3502X3	Maternal care for (suspected) central nervous system malformation or damage in fetus, anencephaly, fetus 3
O3502X4	Maternal care for (suspected) central nervous system malformation or damage in fetus, anencephaly, fetus 4
O3502X5	Maternal care for (suspected) central nervous system malformation or damage in fetus, anencephaly, fetus 5
O3502X9	Maternal care for (suspected) central nervous system malformation or damage in fetus, anencephaly, other fetus
O3503X0	Maternal care for (suspected) central nervous system malformation or damage in fetus, choroid plexus cysts, not applicable or unspecified
O3503X1	Maternal care for (suspected) central nervous system malformation or damage in fetus, choroid plexus cysts, fetus 1
O3503X2	Maternal care for (suspected) central nervous system malformation or damage in fetus, choroid plexus cysts, fetus 2
O3503X3	Maternal care for (suspected) central nervous system malformation or damage in fetus, choroid plexus cysts, fetus 3
O3503X4	Maternal care for (suspected) central nervous system malformation or damage in fetus, choroid plexus cysts, fetus 4
O3503X5	Maternal care for (suspected) central nervous system malformation or damage in fetus, choroid plexus cysts, fetus 5

Table 5 – ICD-10 diagnosis codes added for high-risk pregnancy, effective Oct. 1, 2022

Diagnosis code	Description
O3503X9	Maternal care for (suspected) central nervous system malformation or damage in fetus, choroid plexus cysts, other fetus
O3504X0	Maternal care for (suspected) central nervous system malformation or damage in fetus, encephalocele, not applicable or unspecified
O3504X1	Maternal care for (suspected) central nervous system malformation or damage in fetus, encephalocele, fetus 1
O3504X2	Maternal care for (suspected) central nervous system malformation or damage in fetus, encephalocele, fetus 2
O3504X3	Maternal care for (suspected) central nervous system malformation or damage in fetus, encephalocele, fetus 3
O3504X4	Maternal care for (suspected) central nervous system malformation or damage in fetus, encephalocele, fetus 4
O3504X5	Maternal care for (suspected) central nervous system malformation or damage in fetus, encephalocele, fetus 5
O3504X9	Maternal care for (suspected) central nervous system malformation or damage in fetus, encephalocele, other fetus
O3505X0	Maternal care for (suspected) central nervous system malformation or damage in fetus, holoprosencephaly, not applicable or unspecified
O3505X1	Maternal care for (suspected) central nervous system malformation or damage in fetus, holoprosencephaly, fetus 1
O3505X2	Maternal care for (suspected) central nervous system malformation or damage in fetus, holoprosencephaly, fetus 2
O3505X3	Maternal care for (suspected) central nervous system malformation or damage in fetus, holoprosencephaly, fetus 3
O3505X4	Maternal care for (suspected) central nervous system malformation or damage in fetus, holoprosencephaly, fetus 4
O3505X5	Maternal care for (suspected) central nervous system malformation or damage in fetus, holoprosencephaly, fetus 5
O3505X9	Maternal care for (suspected) central nervous system malformation or damage in fetus, holoprosencephaly, other fetus
O3506X0	Maternal care for (suspected) central nervous system malformation or damage in fetus, hydrocephaly, not applicable or unspecified
O3506X1	Maternal care for (suspected) central nervous system malformation or damage in fetus, hydrocephaly, fetus 1
O3506X2	Maternal care for (suspected) central nervous system malformation or damage in fetus, hydrocephaly, fetus 2
O3506X3	Maternal care for (suspected) central nervous system malformation or damage in fetus, hydrocephaly, fetus 3
O3506X4	Maternal care for (suspected) central nervous system malformation or damage in fetus, hydrocephaly, fetus 4
O3506X5	Maternal care for (suspected) central nervous system malformation or damage in fetus, hydrocephaly, fetus 5
O3506X9	Maternal care for (suspected) central nervous system malformation or damage in fetus, hydrocephaly, other fetus
O3507X0	Maternal care for (suspected) central nervous system malformation or damage in fetus, microcephaly, not applicable or unspecified
O3507X1	Maternal care for (suspected) central nervous system malformation or damage in fetus, microcephaly, fetus 1
O3507X2	Maternal care for (suspected) central nervous system malformation or damage in fetus, microcephaly, fetus 2
O3507X3	Maternal care for (suspected) central nervous system malformation or damage in fetus, microcephaly, fetus 3
O3507X4	Maternal care for (suspected) central nervous system malformation or damage in fetus, microcephaly, fetus 4
O3507X5	Maternal care for (suspected) central nervous system malformation or damage in fetus, microcephaly, fetus 5

Table 5 – ICD-10 diagnosis codes added for high-risk pregnancy, effective Oct. 1, 2022

Diagnosis code	Description
O3507X9	Maternal care for (suspected) central nervous system malformation or damage in fetus, microcephaly, other fetus
O3508X0	Maternal care for (suspected) central nervous system malformation or damage in fetus, spina bifida, not applicable or unspecified
O3508X1	Maternal care for (suspected) central nervous system malformation or damage in fetus, spina bifida, fetus 1
O3508X2	Maternal care for (suspected) central nervous system malformation or damage in fetus, spina bifida, fetus 2
O3508X3	Maternal care for (suspected) central nervous system malformation or damage in fetus, spina bifida, fetus 3
O3508X4	Maternal care for (suspected) central nervous system malformation or damage in fetus, spina bifida, fetus 4
O3508X5	Maternal care for (suspected) central nervous system malformation or damage in fetus, spina bifida, fetus 5
O3508X9	Maternal care for (suspected) central nervous system malformation or damage in fetus, spina bifida, other fetus
O3509X0	Maternal care for (suspected) other central nervous system malformation or damage in fetus, not applicable or unspecified
O3509X1	Maternal care for (suspected) other central nervous system malformation or damage in fetus, fetus 1
O3509X2	Maternal care for (suspected) other central nervous system malformation or damage in fetus, fetus 2
O3509X3	Maternal care for (suspected) other central nervous system malformation or damage in fetus, fetus 3
O3509X4	Maternal care for (suspected) other central nervous system malformation or damage in fetus, fetus 4
O3509X5	Maternal care for (suspected) other central nervous system malformation or damage in fetus, fetus 5
O3509X9	Maternal care for (suspected) other central nervous system malformation or damage in fetus, other fetus
O3510X0	Maternal care for (suspected) chromosomal abnormality in fetus, unspecified, not applicable or unspecified
O3510X1	Maternal care for (suspected) chromosomal abnormality in fetus, unspecified, fetus 1
O3510X2	Maternal care for (suspected) chromosomal abnormality in fetus, unspecified, fetus 2
O3510X3	Maternal care for (suspected) chromosomal abnormality in fetus, unspecified, fetus 3
O3510X4	Maternal care for (suspected) chromosomal abnormality in fetus, unspecified, fetus 4
O3510X5	Maternal care for (suspected) chromosomal abnormality in fetus, unspecified, fetus 5
O3510X9	Maternal care for (suspected) chromosomal abnormality in fetus, unspecified, other fetus
O3511X0	Maternal care for (suspected) chromosomal abnormality in fetus, Trisomy 13
O3511X1	Maternal care for (suspected) chromosomal abnormality in fetus, Trisomy 13
O3511X2	Maternal care for (suspected) chromosomal abnormality in fetus, Trisomy 13
O3511X3	Maternal care for (suspected) chromosomal abnormality in fetus, Trisomy 13
O3511X4	Maternal care for (suspected) chromosomal abnormality in fetus, Trisomy 13
O3511X5	Maternal care for (suspected) chromosomal abnormality in fetus, Trisomy 13
O3511X9	Maternal care for (suspected) chromosomal abnormality in fetus, Trisomy 13
O3512X0	Maternal care for (suspected) chromosomal abnormality in fetus, Trisomy 18
O3512X1	Maternal care for (suspected) chromosomal abnormality in fetus, Trisomy 18
O3512X2	Maternal care for (suspected) chromosomal abnormality in fetus, Trisomy 18
O3512X3	Maternal care for (suspected) chromosomal abnormality in fetus, Trisomy 18
O3512X4	Maternal care for (suspected) chromosomal abnormality in fetus, Trisomy 18
O3512X5	Maternal care for (suspected) chromosomal abnormality in fetus, Trisomy 18

Table 5 – ICD-10 diagnosis codes added for high-risk pregnancy, effective Oct. 1, 2022

Diagnosis code	Description
O3512X9	Maternal care for (suspected) chromosomal abnormality in fetus, Trisomy 18
O3513X0	Maternal care for (suspected) chromosomal abnormality in fetus, Trisomy 21
O3513X1	Maternal care for (suspected) chromosomal abnormality in fetus, Trisomy 21
O3513X2	Maternal care for (suspected) chromosomal abnormality in fetus, Trisomy 21
O3513X3	Maternal care for (suspected) chromosomal abnormality in fetus, Trisomy 21
O3513X4	Maternal care for (suspected) chromosomal abnormality in fetus, Trisomy 21
O3513X5	Maternal care for (suspected) chromosomal abnormality in fetus, Trisomy 21
O3513X9	Maternal care for (suspected) chromosomal abnormality in fetus, Trisomy 21
O3514X0	Maternal care for (suspected) chromosomal abnormality in fetus, Turner Syndrome, not applicable or unspecified
O3514X1	Maternal care for (suspected) chromosomal abnormality in fetus, Turner Syndrome, fetus 1
O3514X2	Maternal care for (suspected) chromosomal abnormality in fetus, Turner Syndrome, fetus 2
O3514X3	Maternal care for (suspected) chromosomal abnormality in fetus, Turner Syndrome, fetus 3
O3514X4	Maternal care for (suspected) chromosomal abnormality in fetus, Turner Syndrome, fetus 4
O3514X5	Maternal care for (suspected) chromosomal abnormality in fetus, Turner Syndrome, fetus 5
O3514X9	Maternal care for (suspected) chromosomal abnormality in fetus, Turner Syndrome, other fetus
O3515X0	Maternal care for (suspected) chromosomal abnormality in fetus, sex chromosome abnormality, not applicable or unspecified
O3515X1	Maternal care for (suspected) chromosomal abnormality in fetus, sex chromosome abnormality, fetus 1
O3515X2	Maternal care for (suspected) chromosomal abnormality in fetus, sex chromosome abnormality, fetus 2
O3515X3	Maternal care for (suspected) chromosomal abnormality in fetus, sex chromosome abnormality, fetus 3
O3515X4	Maternal care for (suspected) chromosomal abnormality in fetus, sex chromosome abnormality, fetus 4
O3515X5	Maternal care for (suspected) chromosomal abnormality in fetus, sex chromosome abnormality, fetus 5
O3515X9	Maternal care for (suspected) chromosomal abnormality in fetus, sex chromosome abnormality, other fetus
O3519X0	Maternal care for (suspected) chromosomal abnormality in fetus, other chromosomal abnormality, not applicable or unspecified
O3519X1	Maternal care for (suspected) chromosomal abnormality in fetus, other chromosomal abnormality, fetus 1
O3519X2	Maternal care for (suspected) chromosomal abnormality in fetus, other chromosomal abnormality, fetus 2
O3519X3	Maternal care for (suspected) chromosomal abnormality in fetus, other chromosomal abnormality, fetus 3
O3519X4	Maternal care for (suspected) chromosomal abnormality in fetus, other chromosomal abnormality, fetus 4
O3519X5	Maternal care for (suspected) chromosomal abnormality in fetus, other chromosomal abnormality, fetus 5
O3519X9	Maternal care for (suspected) chromosomal abnormality in fetus, other chromosomal abnormality, other fetus
O35AXX0	Maternal care for other (suspected) fetal abnormality and damage, fetal facial anomalies, not applicable or unspecified
O35AXX1	Maternal care for other (suspected) fetal abnormality and damage, fetal facial anomalies, fetus 1
O35AXX2	Maternal care for other (suspected) fetal abnormality and damage, fetal facial anomalies, fetus 2
O35AXX3	Maternal care for other (suspected) fetal abnormality and damage, fetal facial anomalies, fetus 3
O35AXX4	Maternal care for other (suspected) fetal abnormality and damage, fetal facial anomalies, fetus 4

Table 5 – ICD-10 diagnosis codes added for high-risk pregnancy, effective Oct. 1, 2022

Diagnosis code	Description
O35AXX5	Maternal care for other (suspected) fetal abnormality and damage, fetal facial anomalies, fetus 5
O35AXX9	Maternal care for other (suspected) fetal abnormality and damage, fetal facial anomalies, other fetus
O35BXX0	Maternal care for other (suspected) fetal abnormality and damage, fetal cardiac anomalies, not applicable or unspecified
O35BXX1	Maternal care for other (suspected) fetal abnormality and damage, fetal cardiac anomalies, fetus 1
O35BXX2	Maternal care for other (suspected) fetal abnormality and damage, fetal cardiac anomalies, fetus 2
O35BXX3	Maternal care for other (suspected) fetal abnormality and damage, fetal cardiac anomalies, fetus 3
O35BXX4	Maternal care for other (suspected) fetal abnormality and damage, fetal cardiac anomalies, fetus 4
O35BXX5	Maternal care for other (suspected) fetal abnormality and damage, fetal cardiac anomalies, fetus 5
O35BXX9	Maternal care for other (suspected) fetal abnormality and damage, fetal cardiac anomalies, other fetus
O35CXX0	Maternal care for other (suspected) fetal abnormality and damage, fetal pulmonary anomalies, not applicable or unspecified
O35CXX1	Maternal care for other (suspected) fetal abnormality and damage, fetal pulmonary anomalies, fetus 1
O35CXX2	Maternal care for other (suspected) fetal abnormality and damage, fetal pulmonary anomalies, fetus 2
O35CXX3	Maternal care for other (suspected) fetal abnormality and damage, fetal pulmonary anomalies, fetus 3
O35CXX4	Maternal care for other (suspected) fetal abnormality and damage, fetal pulmonary anomalies, fetus 4
O35CXX5	Maternal care for other (suspected) fetal abnormality and damage, fetal pulmonary anomalies, fetus 5
O35CXX9	Maternal care for other (suspected) fetal abnormality and damage, fetal pulmonary anomalies, other fetus
O35DXX0	Maternal care for other (suspected) fetal abnormality and damage, fetal gastrointestinal anomalies, not applicable or unspecified
O35DXX1	Maternal care for other (suspected) fetal abnormality and damage, fetal gastrointestinal anomalies, fetus 1
O35DXX2	Maternal care for other (suspected) fetal abnormality and damage, fetal gastrointestinal anomalies, fetus 2
O35DXX3	Maternal care for other (suspected) fetal abnormality and damage, fetal gastrointestinal anomalies, fetus 3
O35DXX4	Maternal care for other (suspected) fetal abnormality and damage, fetal gastrointestinal anomalies, fetus 4
O35DXX5	Maternal care for other (suspected) fetal abnormality and damage, fetal gastrointestinal anomalies, fetus 5
O35DXX9	Maternal care for other (suspected) fetal abnormality and damage, fetal gastrointestinal anomalies, other fetus
O35EXX0	Maternal care for other (suspected) fetal abnormality and damage, fetal genitourinary anomalies, not applicable or unspecified
O35EXX1	Maternal care for other (suspected) fetal abnormality and damage, fetal genitourinary anomalies, fetus 1
O35EXX2	Maternal care for other (suspected) fetal abnormality and damage, fetal genitourinary anomalies, fetus 2
O35EXX3	Maternal care for other (suspected) fetal abnormality and damage, fetal genitourinary anomalies, fetus 3

Table 5 – ICD-10 diagnosis codes added for high-risk pregnancy, effective Oct. 1, 2022

Diagnosis code	Description
O35EXX4	Maternal care for other (suspected) fetal abnormality and damage, fetal genitourinary anomalies, fetus 4
O35EXX5	Maternal care for other (suspected) fetal abnormality and damage, fetal genitourinary anomalies, fetus 5
O35EXX9	Maternal care for other (suspected) fetal abnormality and damage, fetal genitourinary anomalies, other fetus
O35FXX0	Maternal care for other (suspected) fetal abnormality and damage, fetal musculoskeletal anomalies of trunk, not applicable or unspecified
O35FXX1	Maternal care for other (suspected) fetal abnormality and damage, fetal musculoskeletal anomalies of trunk, fetus 1
O35FXX2	Maternal care for other (suspected) fetal abnormality and damage, fetal musculoskeletal anomalies of trunk, fetus 2
O35FXX3	Maternal care for other (suspected) fetal abnormality and damage, fetal musculoskeletal anomalies of trunk, fetus 3
O35FXX4	Maternal care for other (suspected) fetal abnormality and damage, fetal musculoskeletal anomalies of trunk, fetus 4
O35FXX5	Maternal care for other (suspected) fetal abnormality and damage, fetal musculoskeletal anomalies of trunk, fetus 5
O35FXX9	Maternal care for other (suspected) fetal abnormality and damage, fetal musculoskeletal anomalies of trunk, other fetus
O35GXX0	Maternal care for other (suspected) fetal abnormality and damage, fetal upper extremities anomalies, not applicable or unspecified
O35GXX1	Maternal care for other (suspected) fetal abnormality and damage, fetal upper extremities anomalies, fetus 1
O35GXX2	Maternal care for other (suspected) fetal abnormality and damage, fetal upper extremities anomalies, fetus 2
O35GXX3	Maternal care for other (suspected) fetal abnormality and damage, fetal upper extremities anomalies, fetus 3
O35GXX4	Maternal care for other (suspected) fetal abnormality and damage, fetal upper extremities anomalies, fetus 4
O35GXX5	Maternal care for other (suspected) fetal abnormality and damage, fetal upper extremities anomalies, fetus 5
O35GXX9	Maternal care for other (suspected) fetal abnormality and damage, fetal upper extremities anomalies, other fetus
O35HXX0	Maternal care for other (suspected) fetal abnormality and damage, fetal lower extremities anomalies, not applicable or unspecified
O35HXX1	Maternal care for other (suspected) fetal abnormality and damage, fetal lower extremities anomalies, fetus 1
O35HXX2	Maternal care for other (suspected) fetal abnormality and damage, fetal lower extremities anomalies, fetus 2
O35HXX3	Maternal care for other (suspected) fetal abnormality and damage, fetal lower extremities anomalies, fetus 3
O35HXX4	Maternal care for other (suspected) fetal abnormality and damage, fetal lower extremities anomalies, fetus 4
O35HXX5	Maternal care for other (suspected) fetal abnormality and damage, fetal lower extremities anomalies, fetus 5
O35HXX9	Maternal care for other (suspected) fetal abnormality and damage, fetal lower extremities anomalies, other fetus

Presumptive Eligibility for Pregnant Women

Benefits for Presumptive Eligibility for Pregnant Women (PEPW) members are limited to ambulatory prenatal care for certain qualifying diagnoses. Effective for DOS on or after Oct. 1, 2022, the codes in Table 6 will be added as qualifying diagnoses for PEPW services. These diagnosis codes will be added to *Presumptive Eligibility for Pregnant Women Codes*, accessible from the [Code Sets](#) page at in.gov/medicaid/providers.

Table 6 – Qualifying ICD-10 diagnosis codes added for PEPW services, effective for DOS on or after Oct. 1, 2022

Diagnosis code	Description
O3500X0	Maternal care for (suspected) central nervous system malformation or damage in fetus, unspecified, not applicable or unspecified
O3500X1	Maternal care for (suspected) central nervous system malformation or damage in fetus, unspecified, fetus 1
O3500X2	Maternal care for (suspected) central nervous system malformation or damage in fetus, unspecified, fetus 2
O3500X3	Maternal care for (suspected) central nervous system malformation or damage in fetus, unspecified, fetus 3
O3500X4	Maternal care for (suspected) central nervous system malformation or damage in fetus, unspecified, fetus 4
O3500X5	Maternal care for (suspected) central nervous system malformation or damage in fetus, unspecified, fetus 5
O3500X9	Maternal care for (suspected) central nervous system malformation or damage in fetus, unspecified, other fetus
O3501X0	Maternal care for (suspected) central nervous system malformation or damage in fetus, agenesis of the corpus callosum, not applicable or unspecified
O3501X1	Maternal care for (suspected) central nervous system malformation or damage in fetus, agenesis of the corpus callosum, fetus 1
O3501X2	Maternal care for (suspected) central nervous system malformation or damage in fetus, agenesis of the corpus callosum, fetus 2
O3501X3	Maternal care for (suspected) central nervous system malformation or damage in fetus, agenesis of the corpus callosum, fetus 3
O3501X4	Maternal care for (suspected) central nervous system malformation or damage in fetus, agenesis of the corpus callosum, fetus 4
O3501X5	Maternal care for (suspected) central nervous system malformation or damage in fetus, agenesis of the corpus callosum, fetus 5
O3501X9	Maternal care for (suspected) central nervous system malformation or damage in fetus, agenesis of the corpus callosum, other fetus
O3502X0	Maternal care for (suspected) central nervous system malformation or damage in fetus, anencephaly, not applicable or unspecified
O3502X1	Maternal care for (suspected) central nervous system malformation or damage in fetus, anencephaly, fetus 1
O3502X2	Maternal care for (suspected) central nervous system malformation or damage in fetus, anencephaly, fetus 2
O3502X3	Maternal care for (suspected) central nervous system malformation or damage in fetus, anencephaly, fetus 3
O3502X4	Maternal care for (suspected) central nervous system malformation or damage in fetus, anencephaly, fetus 4
O3502X5	Maternal care for (suspected) central nervous system malformation or damage in fetus, anencephaly, fetus 5
O3502X9	Maternal care for (suspected) central nervous system malformation or damage in fetus, anencephaly, other fetus
O3503X0	Maternal care for (suspected) central nervous system malformation or damage in fetus, choroid plexus cysts, not applicable or unspecified

Table 6 – Qualifying ICD-10 diagnosis codes added for PEPW services, effective for DOS on or after Oct. 1, 2022

Diagnosis code	Description
O3503X1	Maternal care for (suspected) central nervous system malformation or damage in fetus, choroid plexus cysts, fetus 1
O3503X2	Maternal care for (suspected) central nervous system malformation or damage in fetus, choroid plexus cysts, fetus 2
O3503X3	Maternal care for (suspected) central nervous system malformation or damage in fetus, choroid plexus cysts, fetus 3
O3503X4	Maternal care for (suspected) central nervous system malformation or damage in fetus, choroid plexus cysts, fetus 4
O3503X5	Maternal care for (suspected) central nervous system malformation or damage in fetus, choroid plexus cysts, fetus 5
O3503X9	Maternal care for (suspected) central nervous system malformation or damage in fetus, choroid plexus cysts, other fetus
O3504X0	Maternal care for (suspected) central nervous system malformation or damage in fetus, encephalocele, not applicable or unspecified
O3504X1	Maternal care for (suspected) central nervous system malformation or damage in fetus, encephalocele, fetus 1
O3504X2	Maternal care for (suspected) central nervous system malformation or damage in fetus, encephalocele, fetus 2
O3504X3	Maternal care for (suspected) central nervous system malformation or damage in fetus, encephalocele, fetus 3
O3504X4	Maternal care for (suspected) central nervous system malformation or damage in fetus, encephalocele, fetus 4
O3504X5	Maternal care for (suspected) central nervous system malformation or damage in fetus, encephalocele, fetus 5
O3504X9	Maternal care for (suspected) central nervous system malformation or damage in fetus, encephalocele, other fetus
O3505X0	Maternal care for (suspected) central nervous system malformation or damage in fetus, holoprosencephaly, not applicable or unspecified
O3505X1	Maternal care for (suspected) central nervous system malformation or damage in fetus, holoprosencephaly, fetus 1
O3505X2	Maternal care for (suspected) central nervous system malformation or damage in fetus, holoprosencephaly, fetus 2
O3505X3	Maternal care for (suspected) central nervous system malformation or damage in fetus, holoprosencephaly, fetus 3
O3505X4	Maternal care for (suspected) central nervous system malformation or damage in fetus, holoprosencephaly, fetus 4
O3505X5	Maternal care for (suspected) central nervous system malformation or damage in fetus, holoprosencephaly, fetus 5
O3505X9	Maternal care for (suspected) central nervous system malformation or damage in fetus, holoprosencephaly, other fetus
O3506X0	Maternal care for (suspected) central nervous system malformation or damage in fetus, hydrocephaly, not applicable or unspecified
O3506X1	Maternal care for (suspected) central nervous system malformation or damage in fetus, hydrocephaly, fetus 1
O3506X2	Maternal care for (suspected) central nervous system malformation or damage in fetus, hydrocephaly, fetus 2
O3506X3	Maternal care for (suspected) central nervous system malformation or damage in fetus, hydrocephaly, fetus 3
O3506X4	Maternal care for (suspected) central nervous system malformation or damage in fetus, hydrocephaly, fetus 4

Table 6 – Qualifying ICD-10 diagnosis codes added for PEPW services, effective for DOS on or after Oct. 1, 2022

Diagnosis code	Description
O3506X5	Maternal care for (suspected) central nervous system malformation or damage in fetus, hydrocephaly, fetus 5
O3506X9	Maternal care for (suspected) central nervous system malformation or damage in fetus, hydrocephaly, other fetus
O3507X0	Maternal care for (suspected) central nervous system malformation or damage in fetus, microcephaly, not applicable or unspecified
O3507X1	Maternal care for (suspected) central nervous system malformation or damage in fetus, microcephaly, fetus 1
O3507X2	Maternal care for (suspected) central nervous system malformation or damage in fetus, microcephaly, fetus 2
O3507X3	Maternal care for (suspected) central nervous system malformation or damage in fetus, microcephaly, fetus 3
O3507X4	Maternal care for (suspected) central nervous system malformation or damage in fetus, microcephaly, fetus 4
O3507X5	Maternal care for (suspected) central nervous system malformation or damage in fetus, microcephaly, fetus 5
O3507X9	Maternal care for (suspected) central nervous system malformation or damage in fetus, microcephaly, other fetus
O3508X0	Maternal care for (suspected) central nervous system malformation or damage in fetus, spina bifida, not applicable or unspecified
O3508X1	Maternal care for (suspected) central nervous system malformation or damage in fetus, spina bifida, fetus 1
O3508X2	Maternal care for (suspected) central nervous system malformation or damage in fetus, spina bifida, fetus 2
O3508X3	Maternal care for (suspected) central nervous system malformation or damage in fetus, spina bifida, fetus 3
O3508X4	Maternal care for (suspected) central nervous system malformation or damage in fetus, spina bifida, fetus 4
O3508X5	Maternal care for (suspected) central nervous system malformation or damage in fetus, spina bifida, fetus 5
O3508X9	Maternal care for (suspected) central nervous system malformation or damage in fetus, spina bifida, other fetus
O3509X0	Maternal care for (suspected) other central nervous system malformation or damage in fetus, not applicable or unspecified
O3509X1	Maternal care for (suspected) other central nervous system malformation or damage in fetus, fetus 1
O3509X2	Maternal care for (suspected) other central nervous system malformation or damage in fetus, fetus 2
O3509X3	Maternal care for (suspected) other central nervous system malformation or damage in fetus, fetus 3
O3509X4	Maternal care for (suspected) other central nervous system malformation or damage in fetus, fetus 4
O3509X5	Maternal care for (suspected) other central nervous system malformation or damage in fetus, fetus 5
O3509X9	Maternal care for (suspected) other central nervous system malformation or damage in fetus, other fetus
O3510X0	Maternal care for (suspected) chromosomal abnormality in fetus, unspecified, not applicable or unspecified
O3510X1	Maternal care for (suspected) chromosomal abnormality in fetus, unspecified, fetus 1
O3510X2	Maternal care for (suspected) chromosomal abnormality in fetus, unspecified, fetus 2
O3510X3	Maternal care for (suspected) chromosomal abnormality in fetus, unspecified, fetus 3

Table 6 – Qualifying ICD-10 diagnosis codes added for PEPW services, effective for DOS on or after Oct. 1, 2022

Diagnosis code	Description
O3510X4	Maternal care for (suspected) chromosomal abnormality in fetus, unspecified, fetus 4
O3510X5	Maternal care for (suspected) chromosomal abnormality in fetus, unspecified, fetus 5
O3510X9	Maternal care for (suspected) chromosomal abnormality in fetus, unspecified, other fetus
O3511X0	Maternal care for (suspected) chromosomal abnormality in fetus, Trisomy 13
O3511X1	Maternal care for (suspected) chromosomal abnormality in fetus, Trisomy 13
O3511X2	Maternal care for (suspected) chromosomal abnormality in fetus, Trisomy 13
O3511X3	Maternal care for (suspected) chromosomal abnormality in fetus, Trisomy 13
O3511X4	Maternal care for (suspected) chromosomal abnormality in fetus, Trisomy 13
O3511X5	Maternal care for (suspected) chromosomal abnormality in fetus, Trisomy 13
O3511X9	Maternal care for (suspected) chromosomal abnormality in fetus, Trisomy 13
O3512X0	Maternal care for (suspected) chromosomal abnormality in fetus, Trisomy 18
O3512X1	Maternal care for (suspected) chromosomal abnormality in fetus, Trisomy 18
O3512X2	Maternal care for (suspected) chromosomal abnormality in fetus, Trisomy 18
O3512X3	Maternal care for (suspected) chromosomal abnormality in fetus, Trisomy 18
O3512X4	Maternal care for (suspected) chromosomal abnormality in fetus, Trisomy 18
O3512X5	Maternal care for (suspected) chromosomal abnormality in fetus, Trisomy 18
O3512X9	Maternal care for (suspected) chromosomal abnormality in fetus, Trisomy 18
O3513X0	Maternal care for (suspected) chromosomal abnormality in fetus, Trisomy 21
O3513X1	Maternal care for (suspected) chromosomal abnormality in fetus, Trisomy 21
O3513X2	Maternal care for (suspected) chromosomal abnormality in fetus, Trisomy 21
O3513X3	Maternal care for (suspected) chromosomal abnormality in fetus, Trisomy 21
O3513X4	Maternal care for (suspected) chromosomal abnormality in fetus, Trisomy 21
O3513X5	Maternal care for (suspected) chromosomal abnormality in fetus, Trisomy 21
O3513X9	Maternal care for (suspected) chromosomal abnormality in fetus, Trisomy 21
O3514X0	Maternal care for (suspected) chromosomal abnormality in fetus, Turner Syndrome, not applicable or unspecified
O3514X1	Maternal care for (suspected) chromosomal abnormality in fetus, Turner Syndrome, fetus 1
O3514X2	Maternal care for (suspected) chromosomal abnormality in fetus, Turner Syndrome, fetus 2
O3514X3	Maternal care for (suspected) chromosomal abnormality in fetus, Turner Syndrome, fetus 3
O3514X4	Maternal care for (suspected) chromosomal abnormality in fetus, Turner Syndrome, fetus 4
O3514X5	Maternal care for (suspected) chromosomal abnormality in fetus, Turner Syndrome, fetus 5
O3514X9	Maternal care for (suspected) chromosomal abnormality in fetus, Turner Syndrome, other fetus
O3515X0	Maternal care for (suspected) chromosomal abnormality in fetus, sex chromosome abnormality, not applicable or unspecified
O3515X1	Maternal care for (suspected) chromosomal abnormality in fetus, sex chromosome abnormality, fetus 1
O3515X2	Maternal care for (suspected) chromosomal abnormality in fetus, sex chromosome abnormality, fetus 2
O3515X3	Maternal care for (suspected) chromosomal abnormality in fetus, sex chromosome abnormality, fetus 3
O3515X4	Maternal care for (suspected) chromosomal abnormality in fetus, sex chromosome abnormality, fetus 4
O3515X5	Maternal care for (suspected) chromosomal abnormality in fetus, sex chromosome abnormality, fetus 5
O3515X9	Maternal care for (suspected) chromosomal abnormality in fetus, sex chromosome abnormality, other fetus
O3519X0	Maternal care for (suspected) chromosomal abnormality in fetus, other chromosomal abnormality, not applicable or unspecified
O3519X1	Maternal care for (suspected) chromosomal abnormality in fetus, other chromosomal abnormality, fetus 1

Table 6 – Qualifying ICD-10 diagnosis codes added for PEPW services, effective for DOS on or after Oct. 1, 2022

Diagnosis code	Description
O3519X2	Maternal care for (suspected) chromosomal abnormality in fetus, other chromosomal abnormality, fetus 2
O3519X3	Maternal care for (suspected) chromosomal abnormality in fetus, other chromosomal abnormality, fetus 3
O3519X4	Maternal care for (suspected) chromosomal abnormality in fetus, other chromosomal abnormality, fetus 4
O3519X5	Maternal care for (suspected) chromosomal abnormality in fetus, other chromosomal abnormality, fetus 5
O3519X9	Maternal care for (suspected) chromosomal abnormality in fetus, other chromosomal abnormality, other fetus
O35AXX0	Maternal care for other (suspected) fetal abnormality and damage, fetal facial anomalies, not applicable or unspecified
O35AXX1	Maternal care for other (suspected) fetal abnormality and damage, fetal facial anomalies, fetus 1
O35AXX2	Maternal care for other (suspected) fetal abnormality and damage, fetal facial anomalies, fetus 2
O35AXX3	Maternal care for other (suspected) fetal abnormality and damage, fetal facial anomalies, fetus 3
O35AXX4	Maternal care for other (suspected) fetal abnormality and damage, fetal facial anomalies, fetus 4
O35AXX5	Maternal care for other (suspected) fetal abnormality and damage, fetal facial anomalies, fetus 5
O35AXX9	Maternal care for other (suspected) fetal abnormality and damage, fetal facial anomalies, other fetus
O35BXX0	Maternal care for other (suspected) fetal abnormality and damage, fetal cardiac anomalies, not applicable or unspecified
O35BXX1	Maternal care for other (suspected) fetal abnormality and damage, fetal cardiac anomalies, fetus 1
O35BXX2	Maternal care for other (suspected) fetal abnormality and damage, fetal cardiac anomalies, fetus 2
O35BXX3	Maternal care for other (suspected) fetal abnormality and damage, fetal cardiac anomalies, fetus 3
O35BXX4	Maternal care for other (suspected) fetal abnormality and damage, fetal cardiac anomalies, fetus 4
O35BXX5	Maternal care for other (suspected) fetal abnormality and damage, fetal cardiac anomalies, fetus 5
O35BXX9	Maternal care for other (suspected) fetal abnormality and damage, fetal cardiac anomalies, other fetus
O35CXX0	Maternal care for other (suspected) fetal abnormality and damage, fetal pulmonary anomalies, not applicable or unspecified
O35CXX1	Maternal care for other (suspected) fetal abnormality and damage, fetal pulmonary anomalies, fetus 1
O35CXX2	Maternal care for other (suspected) fetal abnormality and damage, fetal pulmonary anomalies, fetus 2
O35CXX3	Maternal care for other (suspected) fetal abnormality and damage, fetal pulmonary anomalies, fetus 3
O35CXX4	Maternal care for other (suspected) fetal abnormality and damage, fetal pulmonary anomalies, fetus 4
O35CXX5	Maternal care for other (suspected) fetal abnormality and damage, fetal pulmonary anomalies, fetus 5
O35CXX9	Maternal care for other (suspected) fetal abnormality and damage, fetal pulmonary anomalies, other fetus
O35DXX0	Maternal care for other (suspected) fetal abnormality and damage, fetal gastrointestinal anomalies, not applicable or unspecified
O35DXX1	Maternal care for other (suspected) fetal abnormality and damage, fetal gastrointestinal anomalies, fetus 1

Table 6 – Qualifying ICD-10 diagnosis codes added for PEPW services, effective for DOS on or after Oct. 1, 2022

Diagnosis code	Description
O35DXX2	Maternal care for other (suspected) fetal abnormality and damage, fetal gastrointestinal anomalies, fetus 2
O35DXX3	Maternal care for other (suspected) fetal abnormality and damage, fetal gastrointestinal anomalies, fetus 3
O35DXX4	Maternal care for other (suspected) fetal abnormality and damage, fetal gastrointestinal anomalies, fetus 4
O35DXX5	Maternal care for other (suspected) fetal abnormality and damage, fetal gastrointestinal anomalies, fetus 5
O35DXX9	Maternal care for other (suspected) fetal abnormality and damage, fetal gastrointestinal anomalies, other fetus
O35EXX0	Maternal care for other (suspected) fetal abnormality and damage, fetal genitourinary anomalies, not applicable or unspecified
O35EXX1	Maternal care for other (suspected) fetal abnormality and damage, fetal genitourinary anomalies, fetus 1
O35EXX2	Maternal care for other (suspected) fetal abnormality and damage, fetal genitourinary anomalies, fetus 2
O35EXX3	Maternal care for other (suspected) fetal abnormality and damage, fetal genitourinary anomalies, fetus 3
O35EXX4	Maternal care for other (suspected) fetal abnormality and damage, fetal genitourinary anomalies, fetus 4
O35EXX5	Maternal care for other (suspected) fetal abnormality and damage, fetal genitourinary anomalies, fetus 5
O35EXX9	Maternal care for other (suspected) fetal abnormality and damage, fetal genitourinary anomalies, other fetus
O35FXX0	Maternal care for other (suspected) fetal abnormality and damage, fetal musculoskeletal anomalies of trunk, not applicable or unspecified
O35FXX1	Maternal care for other (suspected) fetal abnormality and damage, fetal musculoskeletal anomalies of trunk, fetus 1
O35FXX2	Maternal care for other (suspected) fetal abnormality and damage, fetal musculoskeletal anomalies of trunk, fetus 2
O35FXX3	Maternal care for other (suspected) fetal abnormality and damage, fetal musculoskeletal anomalies of trunk, fetus 3
O35FXX4	Maternal care for other (suspected) fetal abnormality and damage, fetal musculoskeletal anomalies of trunk, fetus 4
O35FXX5	Maternal care for other (suspected) fetal abnormality and damage, fetal musculoskeletal anomalies of trunk, fetus 5
O35FXX9	Maternal care for other (suspected) fetal abnormality and damage, fetal musculoskeletal anomalies of trunk, other fetus
O35GXX0	Maternal care for other (suspected) fetal abnormality and damage, fetal upper extremities anomalies, not applicable or unspecified
O35GXX1	Maternal care for other (suspected) fetal abnormality and damage, fetal upper extremities anomalies, fetus 1
O35GXX2	Maternal care for other (suspected) fetal abnormality and damage, fetal upper extremities anomalies, fetus 2
O35GXX3	Maternal care for other (suspected) fetal abnormality and damage, fetal upper extremities anomalies, fetus 3
O35GXX4	Maternal care for other (suspected) fetal abnormality and damage, fetal upper extremities anomalies, fetus 4
O35GXX5	Maternal care for other (suspected) fetal abnormality and damage, fetal upper extremities anomalies, fetus 5

Table 6 – Qualifying ICD-10 diagnosis codes added for PEPW services, effective for DOS on or after Oct. 1, 2022

Diagnosis code	Description
O35GXX9	Maternal care for other (suspected) fetal abnormality and damage, fetal upper extremities anomalies, other fetus
O35HXX0	Maternal care for other (suspected) fetal abnormality and damage, fetal lower extremities anomalies, not applicable or unspecified
O35HXX1	Maternal care for other (suspected) fetal abnormality and damage, fetal lower extremities anomalies, fetus 1
O35HXX2	Maternal care for other (suspected) fetal abnormality and damage, fetal lower extremities anomalies, fetus 2
O35HXX3	Maternal care for other (suspected) fetal abnormality and damage, fetal lower extremities anomalies, fetus 3
O35HXX4	Maternal care for other (suspected) fetal abnormality and damage, fetal lower extremities anomalies, fetus 4
O35HXX5	Maternal care for other (suspected) fetal abnormality and damage, fetal lower extremities anomalies, fetus 5
O35HXX9	Maternal care for other (suspected) fetal abnormality and damage, fetal lower extremities anomalies, other fetus
Z5982	Transportation insecurity
Z5986	Financial insecurity
Z5987	Material hardship
Z91110	Patient's noncompliance with dietary regimen due to financial hardship
Z91118	Patient's noncompliance with dietary regimen for other reason
Z91119	Patient's noncompliance with dietary regimen due to unspecified reason
Z91190	Patient's noncompliance with other medical treatment and regimen due to financial hardship
Z91198	Patient's noncompliance with other medical treatment and regimen for other reason
Z91199	Patient's noncompliance with other medical treatment and regimen due to unspecified reason

Renal dialysis

Specific diagnosis codes are required when billing for hemodialysis and peritoneal dialysis services rendered in a hospital outpatient setting, in an independent renal dialysis facility (also known as end-stage renal disease [ESRD] dialysis facilities), or in a patient's home.

Effective for DOS on or after Oct. 1, 2022, the IHCP will add the diagnosis codes in Table 7 to the list of principal diagnosis codes allowable for renal dialysis. These diagnosis codes will be added to the *ICD-10 Diagnosis Codes for Renal Dialysis* table in *Renal Dialysis Services Codes*, accessible from the [Code Sets](#) page at in.gov/medicaid/providers.

Table 7 – Qualifying ICD-10 principal diagnosis codes added for renal dialysis services, effective for DOS on or after Oct. 1, 2022

Diagnosis code	Description
D5930	Hemolytic-uremic syndrome, unspecified
D5931	Infection-associated hemolytic-uremic syndrome
D5932	Hereditary hemolytic-uremic syndrome
D5939	Other hemolytic-uremic syndrome
N1419	Nephropathy induced by other drugs, medicaments and biological substances