

# **2009 Residential Bill Survey**

## **Jurisdictional Electric Utilities**

### **July 1, 2009 Billing**

Commission Staff presents a survey of electric utility billings for residential customers served under Indiana state rate-setting jurisdiction. The surveyed providers to these customers include 5 investor-owned, 4 co-operative and 15 municipal Utilities. We note that 61 municipal and 38 co-operative electricity providers within the state are excluded as non-jurisdictional.

We present the results in a variety of ways to improve the transparency of data collected. All rates included in this survey are those applicable on customer bills issued July 1. The initial tables show the July 1, 2009 bill applicable to simple tariff residential customers at 500, 1000, 1500, and 2000 kWh monthly consumption levels first alphabetically and then ranked by 1000 kWh cost, highest being 1<sup>st</sup>. Next we present the year over year change to the customer bills at 1000 kWh. The survey includes all rate trackers but excludes taxes. Expense and capital trackers provide a means to include cost changes in customer rates outside of a traditional rate case. The fuel and power cost tracker for each municipal in 2009 is compared to 2008 in Table 4. The investor-owned group employs a variety of tracking mechanisms for which the 2009 and 2008 charges are listed for comparison. Table 6 has been added to disaggregate the base and variable cost components of 1000 kWh consumption. Figure Nos. 1 and 2 show the investor-owned electric utilities 1000 kWh residential customer bills for the current and historical periods, respectively.

#### **Table/Figure List**

Table 1	Jurisdictional Electric Utility Residential Customer Bill Survey: By Type and Utility Name Alphabetically
Table 2	Jurisdictional Electric Utility Residential Customer Bills: Ranking @ 1000 kWh
Table 3	Jurisdictional Electric Utility Residential Customer Bill: 2009 vs. 2008 Comparison
Table 4	Jurisdictional Municipal Electric Utility Residential Customer Bills: Fuel/Power Cost Tracker 2009 vs. 2008 Comparison
Table 5	Investor-owned Electric Utility Residential Customer Bills: Rate Tracker 2009 vs. 2008 Comparison
Table 6	Investor-owned Electric Utility Residential Customer Bills: Base and Variable Cost Components
Figure 1	Investor-owned Electric Utility Residential Customer Bills: 1000 kWh Consumption, July 1, 2009 Billing
Figure 2	Investor-owned Electric Utility Residential Customer Bills: 1000 kWh Consumption, Historically

Table 1

**JURISDICTIONAL ELECTRIC UTILITY RESIDENTIAL CUSTOMER BILL SURVEY**  
**[July 1, 2009 Billing] By Utility Name and Type**

MUNICIPAL UTILITIES	kWh Consumption				Overall Ranking*
	500	1000	1500	2000	
Anderson Municipal	\$ 53.77	\$ 97.69	\$ 141.62	\$ 183.34	10
Auburn Municipal	29.16	53.32	77.48	101.64	24
Columbia City Municipal	47.10	86.70	126.31	165.91	16
Crawfordsville Municipal	47.51	88.04	126.36	164.68	15
Frankfort Municipal	46.42	82.57	118.72	150.57	21
Kingsford Heights Municipal	50.19	96.87	143.56	190.25	11
Knightstown Municipal	49.12	93.63	133.84	174.05	14
Lebanon Municipal	46.24	85.72	121.39	157.06	17
Logansport Municipal	53.42	98.02	140.21	181.40	9
Mishawaka Municipal	45.30	80.61	115.92	151.23	22
Peru Municipal	51.24	95.91	138.97	182.03	12
Richmond Municipal	55.24	94.93	134.63	172.59	13
Straughn Municipal	38.92	76.04	113.17	150.29	23
Tipton Municipal	44.52	83.04	119.27	155.50	20
Troy Municipal	60.59	115.45	170.32	225.18	3
<b>COOPERATIVE UTILITIES</b>					
Harrison County REMC	\$ 62.77	\$ 106.56	\$ 146.35	\$ 181.58	6
Jackson County REMC	60.54	106.08	151.61	197.15	7
Marshall County REMC	73.11	128.68	173.74	218.81	2
Northeastern REMC	63.65	108.86	154.06	193.76	4
<b>INVESTOR OWNED UTILITIES</b>					
Duke Energy Indiana	\$ 59.90	\$ 98.75	\$ 132.77	\$ 166.77	8
Indiana Michigan Power D/B/A AEP	45.72	84.64	123.56	162.48	18
Indianapolis Power & Light Co.	52.97	83.43	113.91	144.38	19
Northern Indiana Public Service Co.	57.61	108.56	159.51	210.46	5
So. Indiana Gas & Electric Co. D/B/A Vectren	69.23	128.90	188.58	248.25	1
*Overall Ranking based on Total Rate at 1000 kWh consumption.					

Table 2

**JURISDICTIONAL ELECTRIC UTILITY RESIDENTIAL CUSTOMER BILLS**

[July 1, 2009 Billing]

**Overall Ranking for 1,000 kWh of Consumption**

	NAME	<-----kWh Consumption----->			
		500 kWh	1000 kWh	1500 kWh	2000 kWh
1	So. Indiana Gas & Electric Co. D/B/A Vectren	\$ 69.23	\$ 128.90	\$ 188.58	\$ 248.25
2	Marshall County REMC	\$ 73.11	\$ 128.68	\$ 173.74	\$ 218.81
3	Troy Municipal	\$ 60.59	\$ 115.45	\$ 170.32	\$ 225.18
4	Northeastern REMC	\$ 63.65	\$ 108.86	\$ 154.06	\$ 193.76
5	Northern Indiana Public Service Co.	\$ 57.61	\$ 108.56	\$ 159.51	\$ 210.46
6	Harrison County REMC	\$ 62.77	\$ 106.56	\$ 146.35	\$ 181.58
7	Jackson County REMC	\$ 60.54	\$ 106.08	\$ 151.61	\$ 197.15
8	Duke Energy Indiana	\$ 59.90	\$ 98.75	\$ 132.77	\$ 166.77
9	Logansport Municipal	\$ 53.42	\$ 98.02	\$ 140.21	\$ 181.40
10	Anderson Municipal	\$ 53.77	\$ 97.69	\$ 141.62	\$ 183.34
11	Kingsford Heights Municipal	\$ 50.19	\$ 96.87	\$ 143.56	\$ 190.25
12	Peru Municipal	\$ 51.24	\$ 95.91	\$ 138.97	\$ 182.03
13	Richmond Municipal	\$ 55.24	\$ 94.93	\$ 134.63	\$ 172.59
14	Knightstown Municipal	\$ 49.12	\$ 93.63	\$ 133.84	\$ 174.05
15	Crawfordsville Municipal	\$ 47.51	\$ 88.04	\$ 126.36	\$ 164.68
16	Columbia City Municipal	\$ 47.10	\$ 86.70	\$ 126.31	\$ 165.91
17	Lebanon Municipal	\$ 46.24	\$ 85.72	\$ 121.39	\$ 157.06
18	Indiana Michigan Power D/B/A AEP	\$ 45.72	\$ 84.64	\$ 123.56	\$ 162.48
19	Indianapolis Power & Light Co.	\$ 52.97	\$ 83.43	\$ 113.91	\$ 144.38
20	Tipton Municipal	\$ 44.52	\$ 83.04	\$ 119.27	\$ 155.50
21	Frankfort Municipal	\$ 46.42	\$ 82.57	\$ 118.72	\$ 150.57
22	Mishawaka Municipal	\$ 45.30	\$ 80.61	\$ 115.92	\$ 151.23
23	Straughn Municipal	\$ 38.92	\$ 76.04	\$ 113.17	\$ 150.29
24	Auburn Municipal	\$ 29.16	\$ 53.32	\$ 77.48	\$ 101.64
	Average	\$ 52.68	\$95.13	\$136.08	\$176.22
	2008 Survey	\$ 48.33	\$86.28	\$122.72	\$158.37
	% Change	8.99%	10.26%	10.88%	11.27%

Table 3

**Jurisdictional Electric Utility Residential Customer Bill  
1000 kWh Usage, July 1 Billing (By Name)  
Year to Year Comparison**

<b>MUNICIPAL UTILITIES</b>	<b>2009</b>	<b>2008</b>	<b>% Change</b>
Anderson Municipal	\$ 97.69	\$ 84.41	15.73%
Auburn Municipal	\$ 53.32	\$ 48.50	9.93%
Columbia City Municipal	\$ 86.70	\$ 84.25	2.91%
Crawfordsville Municipal	\$ 88.04	\$ 81.85	7.57%
Frankfort Municipal	\$ 82.57	\$ 76.60	7.80%
Kingsford Heights Municipal	\$ 96.87	\$ 80.08	20.97%
Knightstown Municipal	\$ 93.63	\$ 82.12	14.01%
Lebanon Municipal	\$ 85.72	\$ 79.39	7.97%
Logansport Municipal	\$ 98.02	\$ 91.34	7.32%
Mishawaka Municipal	\$ 80.61	\$ 63.53	26.90%
Peru Municipal	\$ 95.91	\$ 82.08	16.85%
Richmond Municipal	\$ 94.93	\$ 81.33	16.72%
Straughn Municipal	\$ 76.04	\$ 77.17	-1.46%
Tipton Municipal	\$ 83.04	\$ 81.32	2.12%
Troy Municipal	\$ 115.45	\$ 103.84	11.18%
<b>Muni Averages</b>	<b>88.57</b>	<b>79.85</b>	<b>10.91%</b>
<b>COOPERATIVE UTILITIES</b>			
Harrison County REMC	\$ 106.56	\$ 97.85	8.90%
Jackson County REMC	\$ 106.08	\$ 87.57	21.13%
Marshall County REMC	\$ 128.68	\$ 118.63	8.47%
Northeastern REMC	\$ 108.86	\$ 99.34	9.58%
<b>Co-op Averages</b>	<b>112.54</b>	<b>100.85</b>	<b>11.60%</b>
<b>INVESTOR OWNED UTILITIES</b>			
Duke Energy Indiana	\$ 98.75	\$ 96.62	2.20%
Indiana Michigan Power D/B/A AEP	\$ 84.64	\$ 73.66	14.90%
Indianapolis Power & Light Co.	\$ 83.43	\$ 74.72	11.66%
Northern Indiana Public Service Co.	\$ 108.56	\$ 105.37	3.03%
So. Indiana Gas & Electric Co. D/B/A Vectren	\$ 128.90	\$ 119.04	8.29%
<b>IOU Averages</b>	<b>100.86</b>	<b>93.88</b>	<b>7.43%</b>

**Table 4**

**Jurisdictional Municipal Electric Utility Residential Customer Bill  
1000 kWh Usage, July 1 Billing (By Name)  
Year to Year Comparison  
Fuel/Power Factor Adjustment Mechanism**

<b>Fuel/Power Factor Charge @ 1000 kWh</b>	<b>2009</b>	<b>2008</b>	<b>Change</b>
Anderson Municipal	\$29.42	\$21.66	\$7.76
Auburn Municipal	9.73	4.92	4.82
Columbia City Municipal	25.99	23.54	2.45
Crawfordsville Municipal	23.34	17.14	6.19
Frankfort Municipal	26.21	20.24	5.97
Kingsford Heights Municipal	29.47	12.68	16.79
Knightstown Municipal	28.62	17.12	11.50
Lebanon Municipal	21.25	14.92	6.33
Logansport Municipal	24.03	22.70	1.33
Mishawaka Municipal	21.26	4.18	17.09
Peru Municipal	21.40	7.57	13.83
Richmond Municipal	30.30	16.70	13.60
Straughn Municipal	10.86	11.98	(1.13)
Tipton Municipal	17.40	15.68	1.72
Troy Municipal	56.83	45.22	11.61

Table 5

**Indiana Investor-Owned Electric Utilities**  
**Year to Year Comparison**  
**Adjustable Rate Mechanisms on Residential Bills**  
**1000 kWh Usage, July 1 Billing**

	2009	2008	Change
	\$	\$	\$
<b>Indiana Michigan Power D/B/A AEP</b>			
FAC	8.72	6.10	2.62
DSM	0.00	0.00	0.00
Off-System Sales Sharing	(1.77)	0.00	(1.77)
RTO	2.78	0.00	2.78
QPCP & QPCP O&M	0.00	0.00	0.00
EA	0.60	0.00	0.60
Merger Savings (Settlement)	0.00	(0.93)	0.93
Total	10.34	5.17	5.17
<b>Indianapolis Power &amp; Light Co.</b>			
FAC	8.91	7.81	1.10
Voluntary Credit applied via FAC	0.00	(7.30)	7.30
QPCP & QPCP O&M	7.00	6.96	0.04
DSM	0.73	0.56	0.17
ACLM	0.30	0.20	0.11
Total	16.93	8.22	8.71
<b>Northern Indiana Public Service Co.</b>			
FAC	7.16	4.69	2.47
QPCP	3.03	2.28	0.75
QPCP O&M	1.31	1.02	0.29
Customer Credit (Settlement)	(6.36)	(6.04)	(0.32)
Total	5.14	1.95	3.19
<b>Duke Energy Indiana</b>			
FAC	12.90	13.52	(0.62)
QPCP	4.36	3.03	1.33
QPCP O&M	4.04	2.62	1.42
EA	(0.17)	0.39	(0.56)
DSM	0.55	0.87	(0.32)
MISO	0.75	1.43	(0.68)
IGCC	1.49	0.00	1.49
Summer Reliability	0.22	0.12	0.10
Amortization Phase Out	(0.59)	(0.56)	(0.03)
Total	23.55	21.42	2.13
<b>So. Indiana Gas &amp; Electric Co. D/B/A Vectren</b>			
FAC	9.93	(1.37)	11.30
QPCP	3.47	1.33	2.14
QPCP O&M	3.12	0.00	3.12
MISO	(3.35)	1.58	(4.93)
Reliability (RCRA)	(3.27)	(1.41)	(1.85)
DSM	0.09	0.00	0.09
Total	10.00	0.13	9.78

FAC = Fuel Adjustment Charge

QPCP = Qualified Pollution Control Property

DSM = Demand Side Management

ACLM = Air Conditioning Load Management

QPCP O&amp;M = Qualified Pollution Control Property Operation &amp; Maintenance

EA = Emission Allowance

IGCC = Clean Coal Tracker for Gasification Plant

RTO = Midwest ISO or PJM ISO Non-fuel

**Table 6**

**Indiana Investor-Owned Electric Utilities  
Base and Variable (Tracker) Bill Components  
1000 kWh Usage, July 1, 2009 Billing**

	<b>Base</b>	<b>Variable</b>	<b>Total</b>
	<b>\$</b>	<b>\$</b>	<b>\$</b>
Indiana Michigan Power D/B/A AEP	74.30	10.34	84.64
Indianapolis Power & Light Co.	66.50	16.93	83.43
Northern Indiana Public Service Co.	97.06	11.50	108.56
Duke Energy Indiana	74.61	24.14	98.75
So. Indiana Gas & Electric Co. D/B/A Vectren	118.90	10.00	128.90

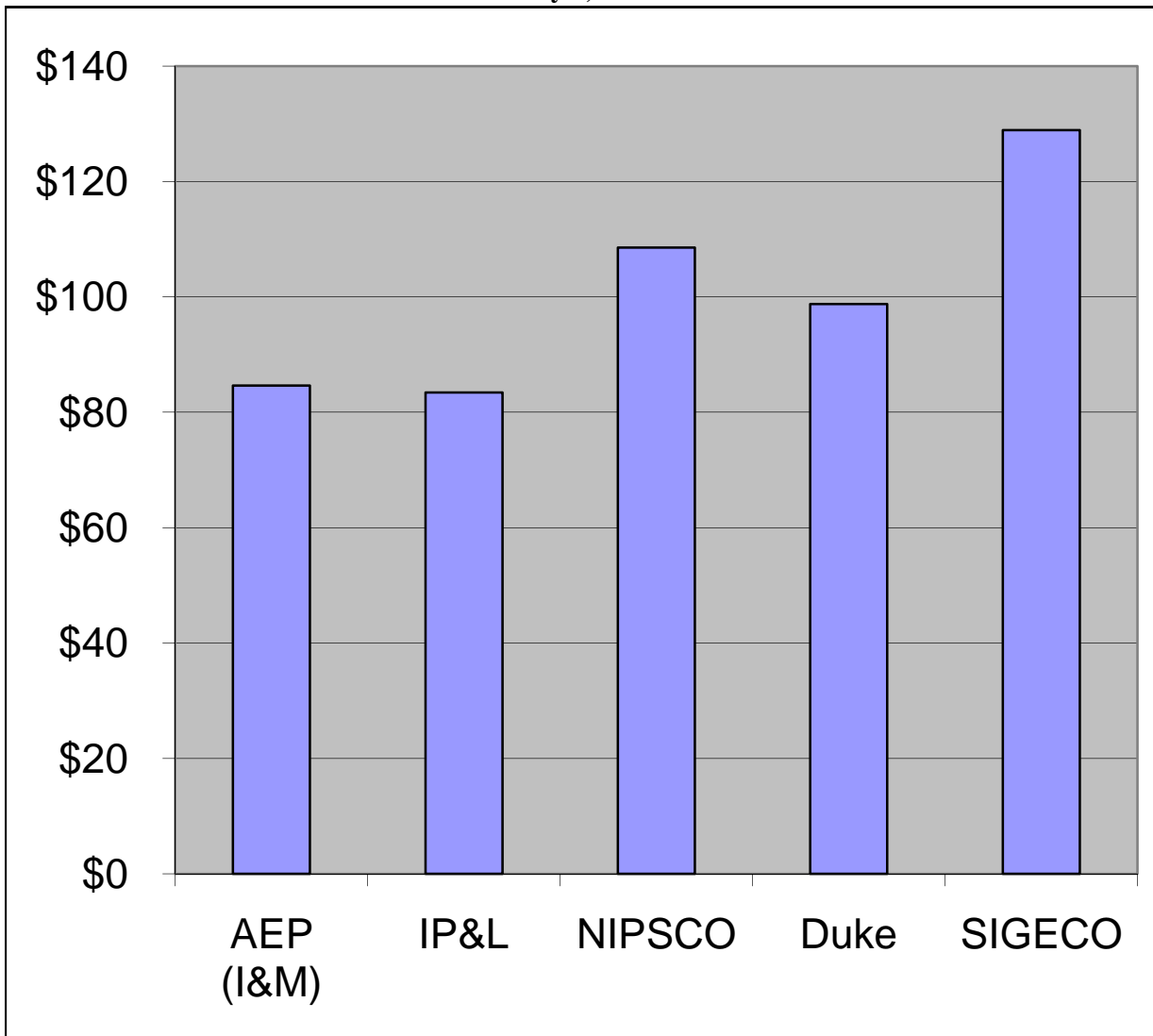
Notes:

Northern Indiana Public Service Co. Base amount includes a \$6.36 credit applied through the FAC

Duke Energy Indiana Base amount includes a \$0.59 amortization removal credit

**Figure 1**

**Comparison of Investor Owned Utilities  
Residential Electric Bills at 1,000 kWh  
July 1, 2009**



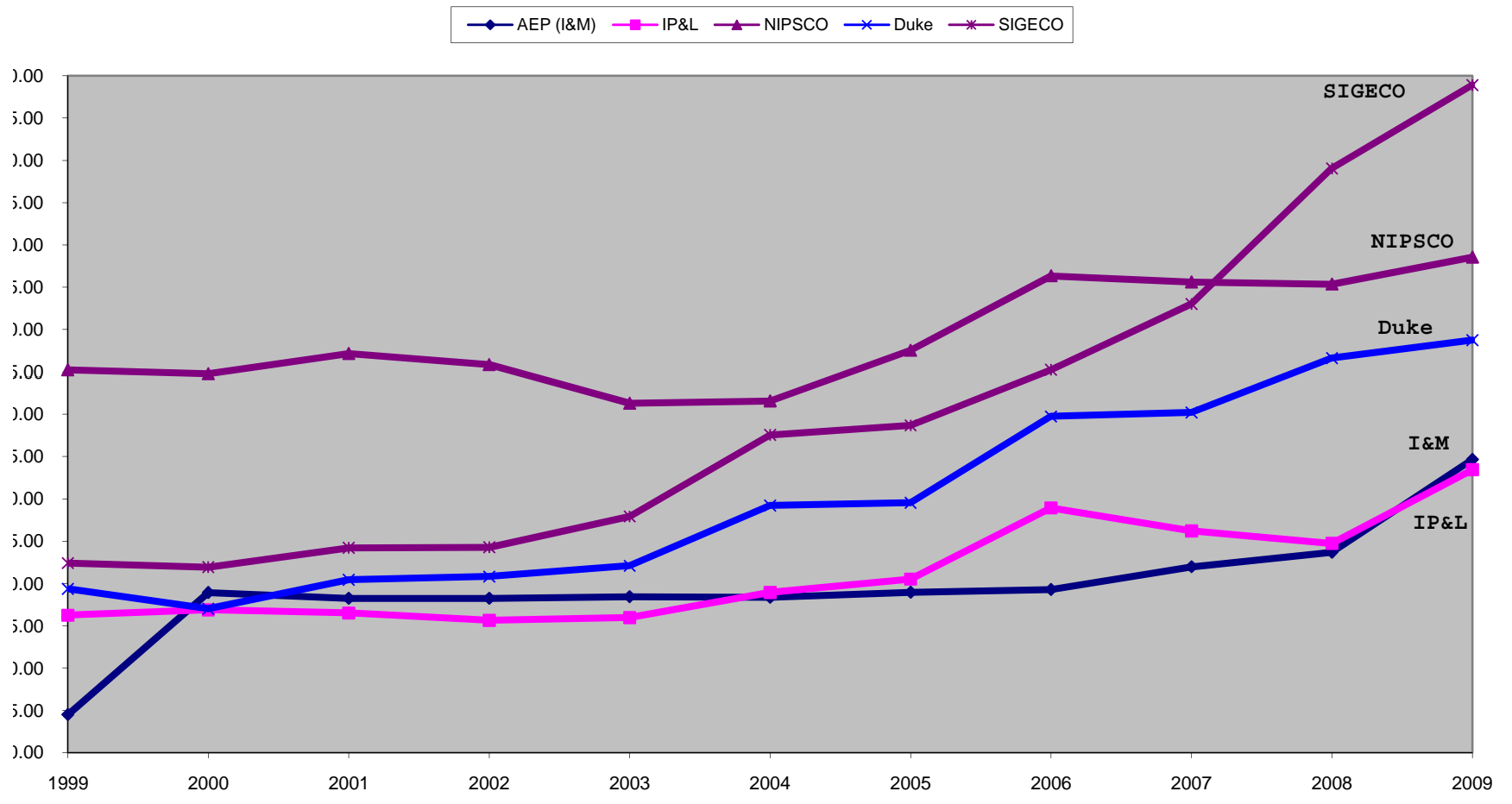
	<b>1,000 kWh</b>	<b>Overall Ranking*</b>
Indiana Michigan Power D/B/A AEP	\$ 84.64	18
Indianapolis Power & Light Co.	\$ 83.43	19
Northern Indiana Public Service Co.	\$ 108.56	5
Duke Energy Indiana	\$ 98.75	8
So. Indiana Gas & Electric Co. D/B/A Vectren	\$ 128.90	1

\*Overall Ranking based on evaluation of 24 utilities.



Figure 2

10 Year Comparison of Investor Owned Utility Residential Electric Bills at 1,000 kWh



Utility	Change	5 Years		10 Years	
		Amount	%	Amount	%
American Electric Power Co. (I&M)	AEP (I&M)	\$16.30	23.9%	\$30.16	55.4%
Indianapolis Power & Light	IP&L	\$14.51	21.1%	\$17.21	26.0%
Northern Indiana Public Service Co.	NIPSCO	\$17.01	18.6%	\$13.34	14.0%
Duke Energy Indiana	Duke	\$19.55	24.7%	\$29.39	42.4%
Southern Indiana Gas & Electric Co.	SIGECO	\$41.36	47.2%	\$56.51	78.1%