

HOOSIER HEARTLAND HIGHWAY

SR 25 - Segment 4

FROM 0.61 mile east of CR325W
TO US 24/US 35

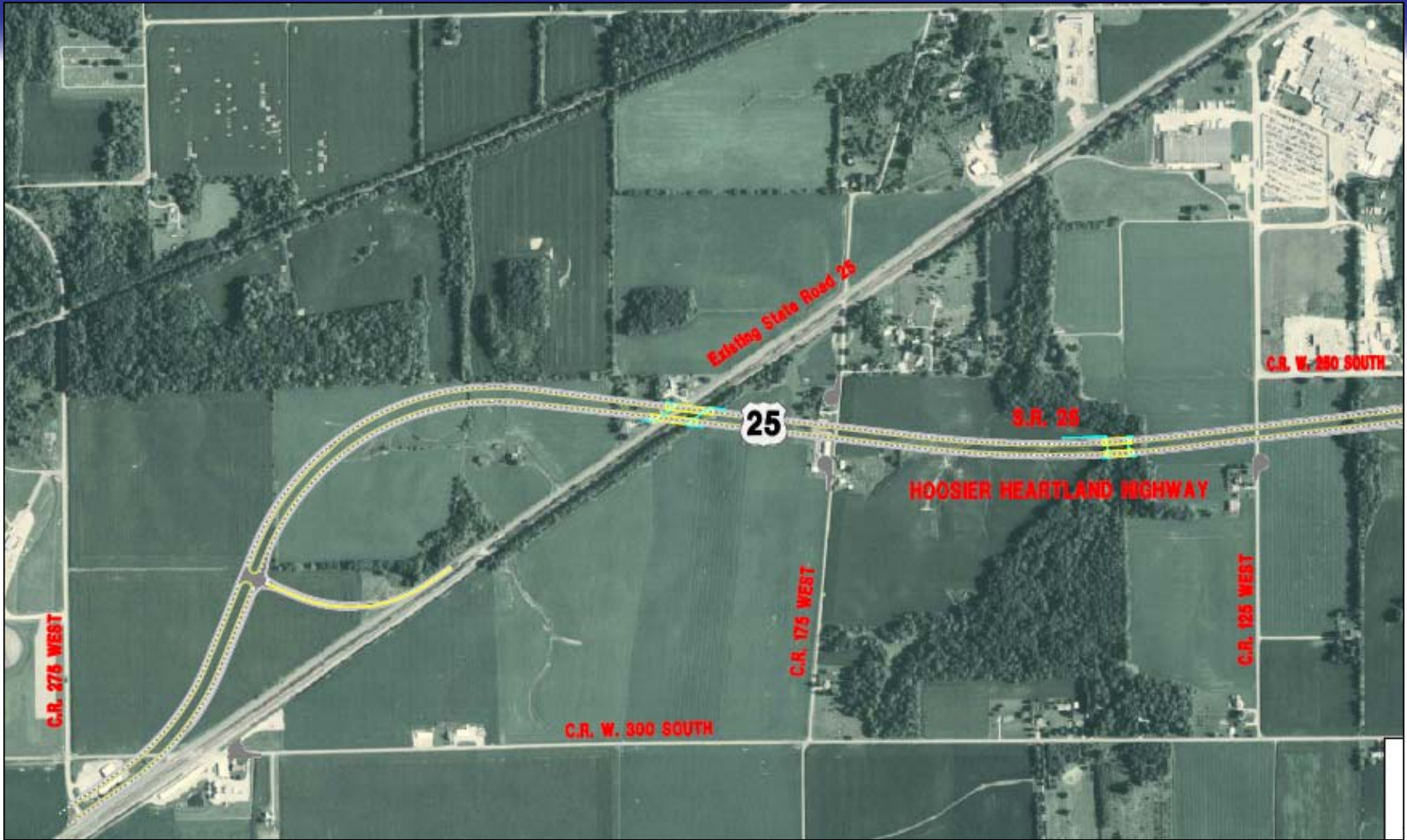
United Consulting, Inc.



Project Description

- From SR 25 to US 24/35
- 4 Lane Divided Highway
- 60 Foot Median
- Connector to existing SR 25 (“Old” SR 25)
- Bridge over Old SR 25 and Railroad
- Bridge over Kokomo Pike





Project Description (cont'd)

- Split Diamond Interchange – SR 29 & Burlington Avenue
 - SR 29 – Extend 4 Lane Section from US 24/35 to Interchange
 - Burlington Avenue – 4 Lane at Interchange
 - Frontage Roads Connect SR 29 to Burlington Avenue





Status

- Creek realignment request November 1, 2005
- Additional Survey Complete
- Permit Coordination December 11, 2007
- Revised Alignment Established March 10, 2008
- Final Hydraulic Information October 28, 2008
- Stage One Submittal April 3, 2009
- Preliminary Field Check August 5, 2009
- Public Information Meeting December 10, 2009
- Start R/W Engineering January 2010
- Start R/W Acquisition August 2010
- Contract Lettings Begin Fall 2011
- Begin Construction Early 2012
- Construction Complete End of 2013



Summary

- Permit applications are complete.
- Utility and railroad coordination is started.
- Right-of-way activities are underway.
- Design is about 40% complete.
- First Contract (4B) will let Fall 2011.
- Construction anticipated to begin early 2012.
- Entire segment will be under construction by the summer of 2012.

