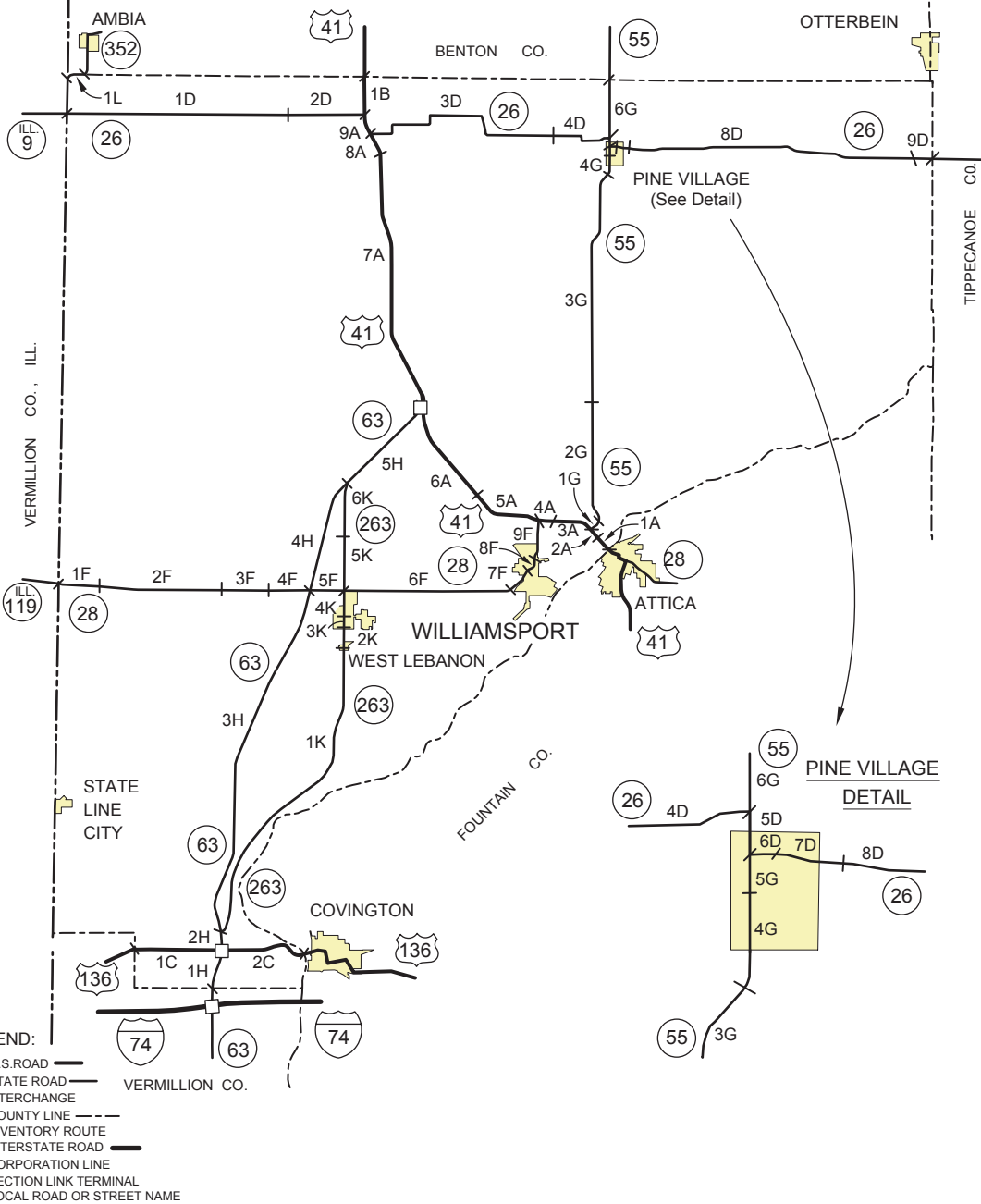


# WARREN



- LEGEND:**
- U.S. ROAD
  - STATE ROAD
  - INTERCHANGE
  - COUNTY LINE
  - INVENTORY ROUTE
  - INTERSTATE ROAD
  - CORPORATION LINE
  - SECTION LINK TERMINAL
  - LOCAL ROAD OR STREET NAME

ROAD NO.	CODE	DAILY TRAFFIC VOLUME	DESCRIPTION OF SECTION LINK TERMINI	ROAD NO.	CODE	DAILY TRAFFIC VOLUME	DESCRIPTION OF SECTION LINK TERMINI
US-41	1A	9560	Fountain County Line	SR-28	1F	930	Illinois State Line
	2A	7690	IR-165 ( River Rd. )		2F	1710	IR-71 ( 1000 West )
	3A	7260	SR-55		3F	1140	IR-17 ( 675 West )
	4A	6990	IR-90 ( 1050 South )		4F	1190	IR-21 ( 550 West )
	5A	1840	SR-28		5F	2010	SR-63
	6A	1570	IR-20 ( Five Points Rd. )		6F	3960	SR-263
	7A	5230	SR-63		7F	3460	IR-166
	8A	4500	IR-285		8F	4870	Monroe St. ( Williamsport )
	9A	4450	SR-26 ( Jct. East )		9F	5710	Depot St. ( Williamsport )
	1B	4380	SR-26 ( Jct. West )				US-41
US-136			Benton County Line				( SR-28 follows over US-41 )
	1C	4500	Vermillion County Line	1G	2230	US-41	
	2C	5670	SR-63	2G	1520	IR-141 ( 350 East )	
			Fountain County Line	3G	1330	IR-100 ( 250 North )	
				4G	2010	IR-41 ( Pine Village Rd. )	
SR-26				5G	1800	Fenton St. ( Pine Village )	
	1D	750	Illinois State Line			SR-26 ( Jct. East )	
	2D	820	IR-167 ( 500 West )			( SR-55 Travels Over SR-26 )	
			US-41 ( Jct. North )	6G	830	SR-26 ( Jct. West )	
			( SR-26 follows over US-41 )			Benton County Line	
	3D	430	US-41 ( Jct. South )	SR-63	1H	5280	Vermillion County Line
	4D	710	IR-139 ( 200 East )		2H	5270	US-136 Interchange
	5D	1440	SR-55 ( Jct. North )		3H	4310	SR-263
	6D	1690	SR-55 ( Jct. South )		4H	3030	SR-28
	7D	1750	Cobb St. ( Pine Village )		5H	3380	SR-263
8D	1480	IR-215 ( 3rd Ave. )			US-41		
9D	1650	IR-159 ( 1125 East )	SR-263	1K	1160	SR-63	
		Tiptecanoe County Line		2K	1580	Main St. ( West Lebanon )	
				3K	2340	Sixth St. ( West Lebanon )	
				4K	3120	Third St. ( West Lebanon )	
				5K	1060	SR-28	
				6K	280	IR-16	
SR-352						SR-63	
				1L	240	Illinois State Line	
						Benton County Line	