


Lake County



INTERCHANGE: IC_I90_13{14A}

IC_U12_9

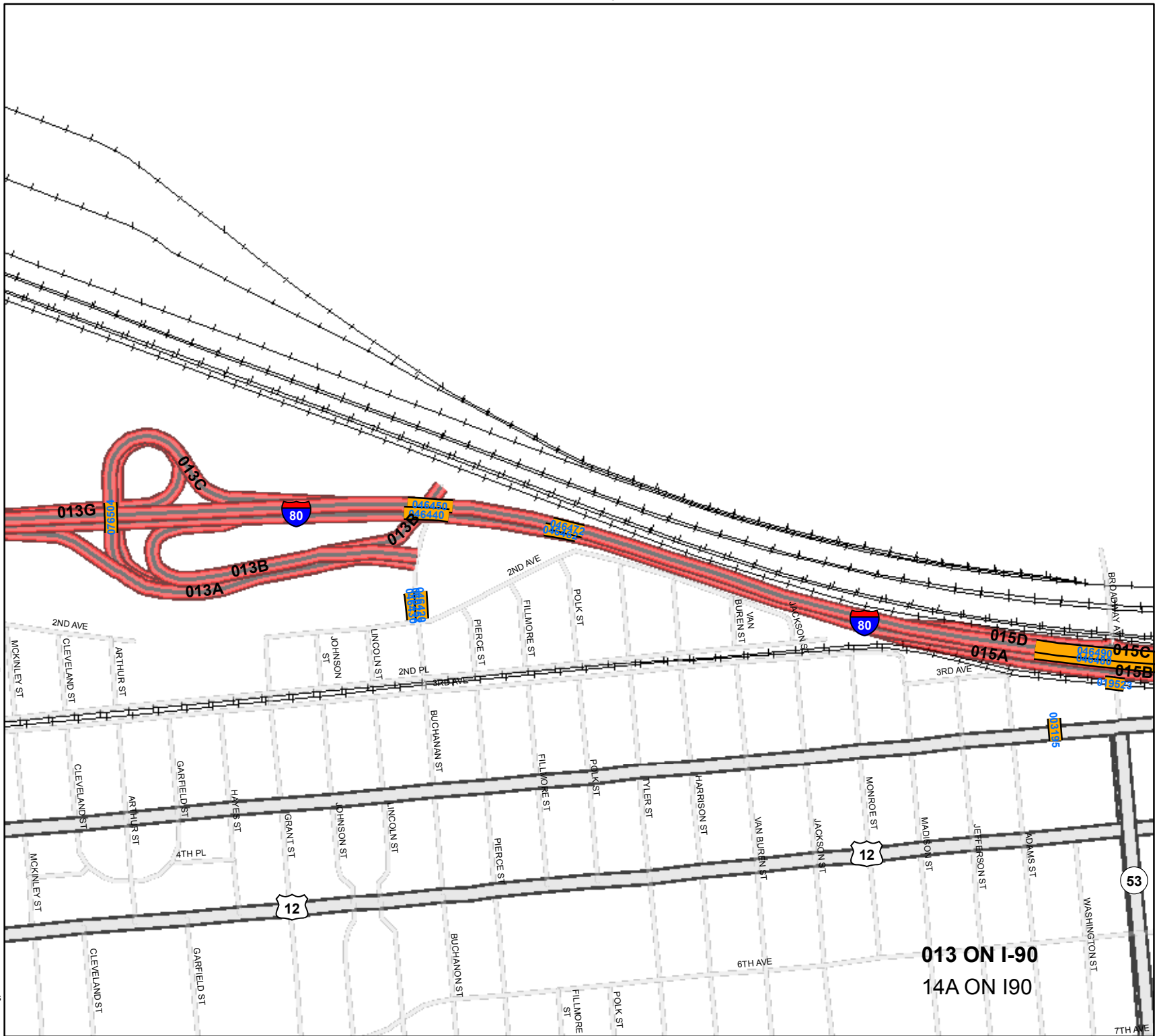
-  Bridge NBI#
-  Local Streets
-  Corp Boundary



Date: 8/28/2018

Indot Disclaimer: The Indiana Department of Transportation (INDOT) provides these geographic data "as is" and the user accepts the data "as is", and assumes all risks associated with its use. By acceptance of this data, the user agrees not to transmit this data or provide access to it, or any part of it, to another party unless the user shall include with the data a copy of this disclaimer. INDOT makes no guarantee or warranty concerning the accuracy of information contained in the geographic data. INDOT further makes no warranties, either expressed or implied as to any other matter whatsoever, including, without limitation, the condition of any product, or its fitness for any particular purpose. The burden for determining fitness for use lies entirely with the user. Although these data have been processed successfully on computers of INDOT, no warranty, expressed or implied, is made by INDOT regarding the use of these data on any other system, nor does the fact of distribution constitute or imply any such warranty. In no event shall INDOT have any liability whatsoever for payment of any consequential, incidental, indirect, special, or tort damages of any kind, including, but not limited to, any loss of profits arising out of or reliance on the geographic data or arising out of the delivery, installation, operation, or support by INDOT.

Document Name:
New_Interchange_Updates_without_DD_Pages
Map created by INDOT GIS
Services Using data from
Engineering & Asset Management



013 ON I-90
14A ON I90

825 412.5 0 825 Feet