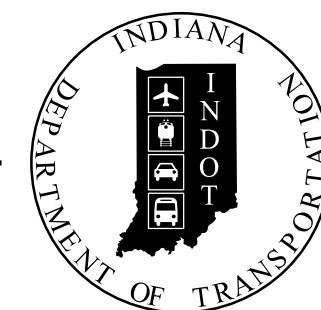


PROJECT	DESIGNATION
1900066	1900066
CONTRACT	BRIDGE FILE
B-42399	064-31-10475

Excerpt

INDIANA DEPARTMENT OF TRANSPORTATION



STRUCTURE INFORMATION				
STRUCTURE	TYPE	SPAN AND SKEW	OVER	STATION
064-31-10475	Cast-in Place 3-Sided, Flat Top Concrete Structure	1 Span: 26'-0" Skew: 45° Lt.	Branch Blue River	47+44.00 Line "A"

BRIDGE PLANS

FOR SPANS OVER 20 FEET

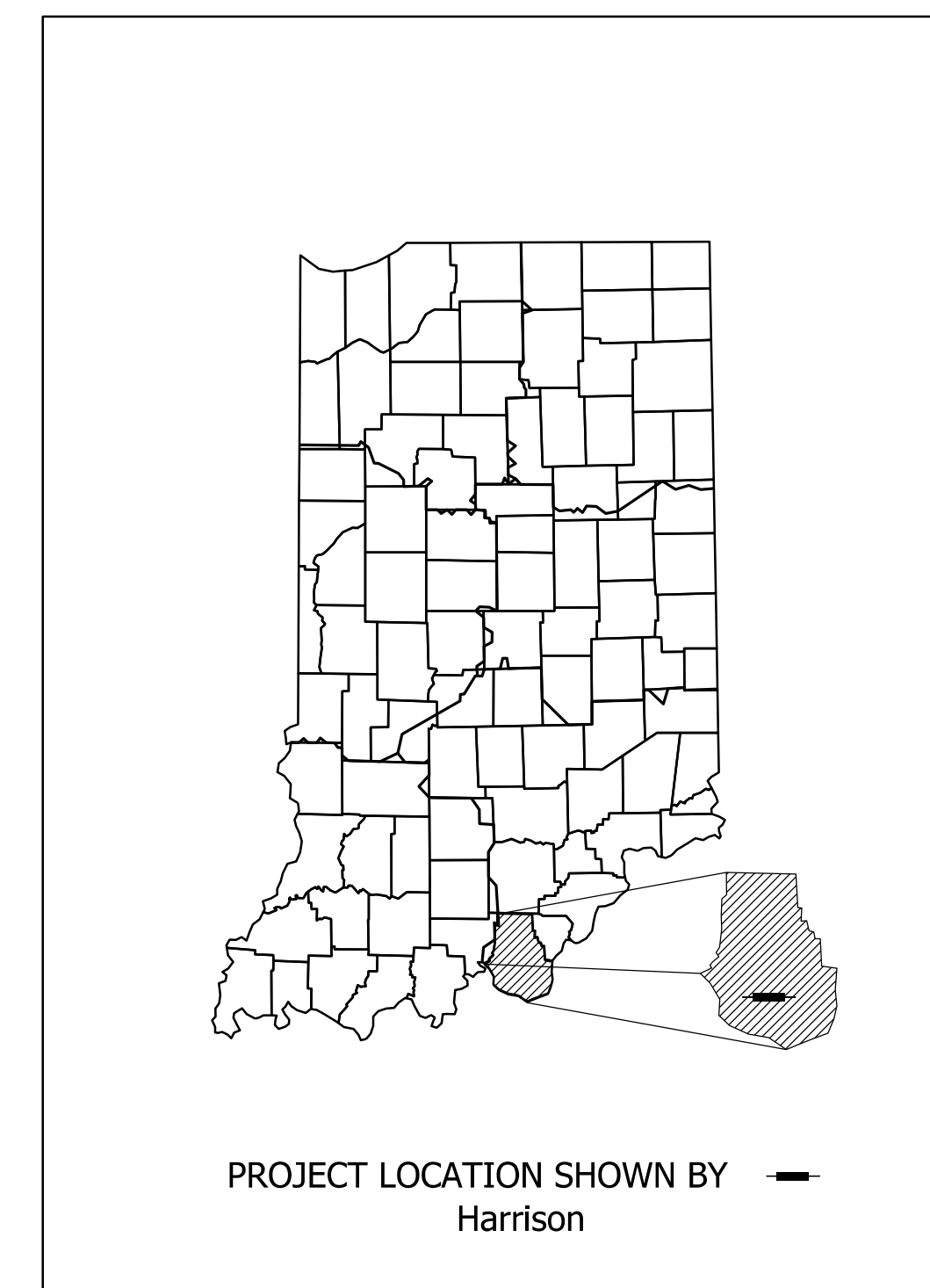
ROUTE: SR 64 AT: RP 90+9

PROJECT NO. 1900066 P.E.
1900066 R/W
1900066 CONST.

Bridge Replacement on SR 64 over Branch Blue River
Located 0.11 Miles East of SR 337
Section 17, T-2-S, R-3-E, Blue River Township, Harrison County, Indiana

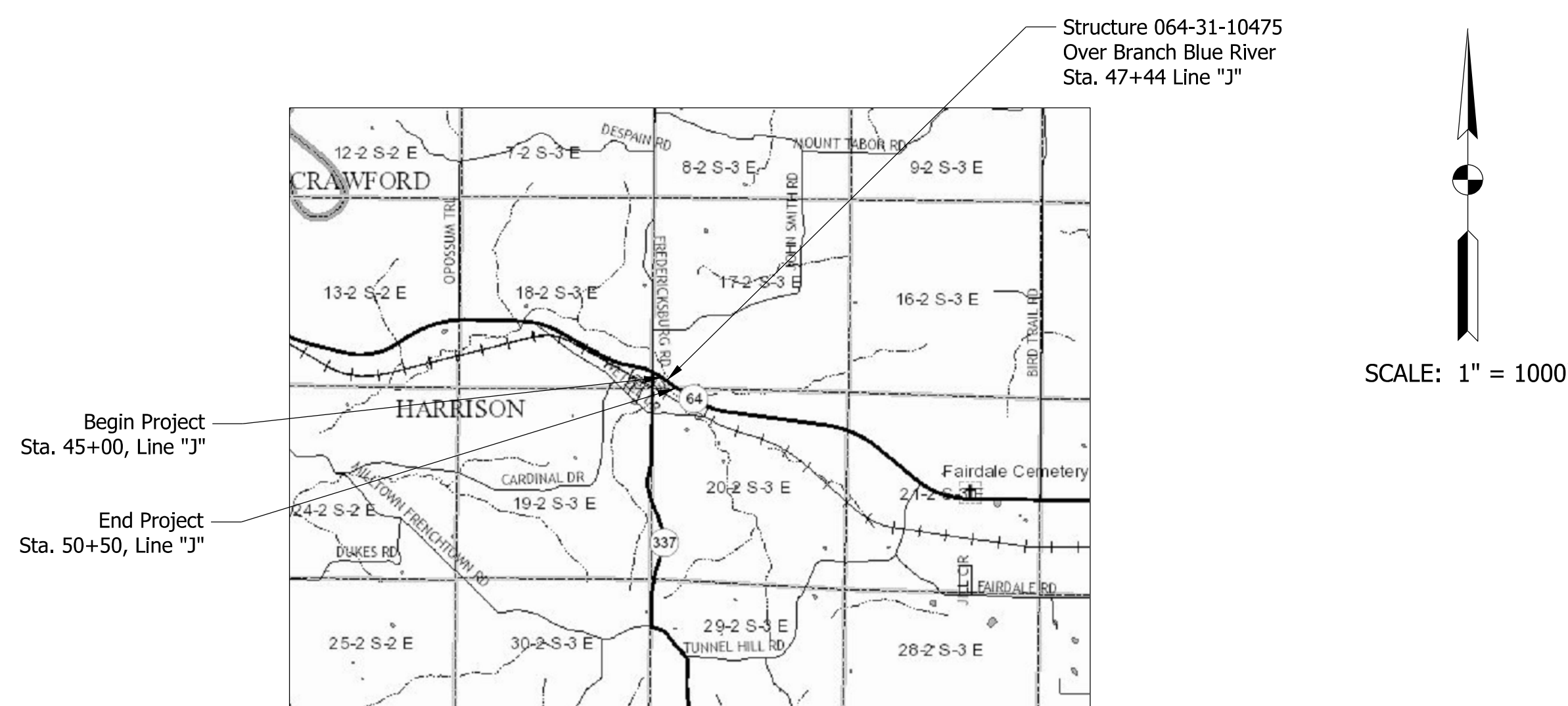
TRAFFIC DATA		
A.A.D.T. (2024)		4290 V.P.D.
A.A.D.T. (2044)		4368 V.P.D.
D.H.V (2044)		478 V.P.H.
DIRECTIONAL DISTRIBUTION		51 %
TRUCKS		7 % A.A.D.T. 6 % D.H.V.

DESIGN DATA	
DESIGN SPEED	55 M.P.H.
PROJECT DESIGN CRITERIA	3R (NON-FREEWAY)
FUNCTIONAL CLASSIFICATION	STATE COLLECTOR
RURAL/URBAN	RURAL
TERRAIN	LEVEL
ACCESS CONTROL	NONE



LATITUDE: N 38°20'8" LONGITUDE: W 86°12'58"

BRIDGE LENGTH:	0.008	MI.
ROADWAY LENGTH:	0.058	MI.
TOTAL LENGTH:	0.066	MI.
MAX. GRADE:	+0.50	%



STAGE 2 PLANS
9/1/2023

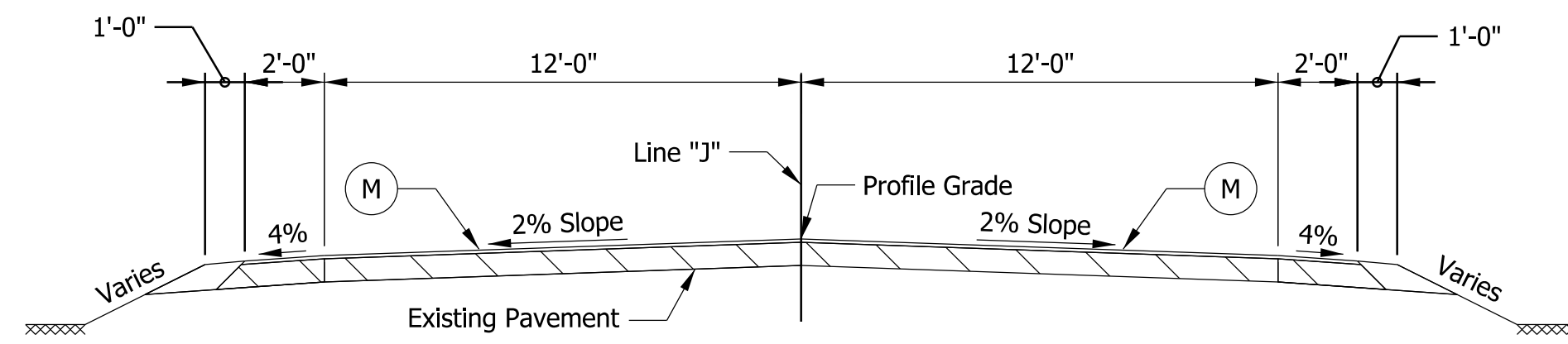
INDIANA DEPARTMENT OF TRANSPORTATION
STANDARD SPECIFICATIONS DATED 2024
TO BE USED WITH THESE PLANS.

PLANS PREPARED BY: _____	PHONE NUMBER _____
CERTIFIED BY: _____	DATE _____
RECOMMENDED FOR LETTING: _____	DATE _____
INDIANA DEPARTMENT OF TRANSPORTATION	

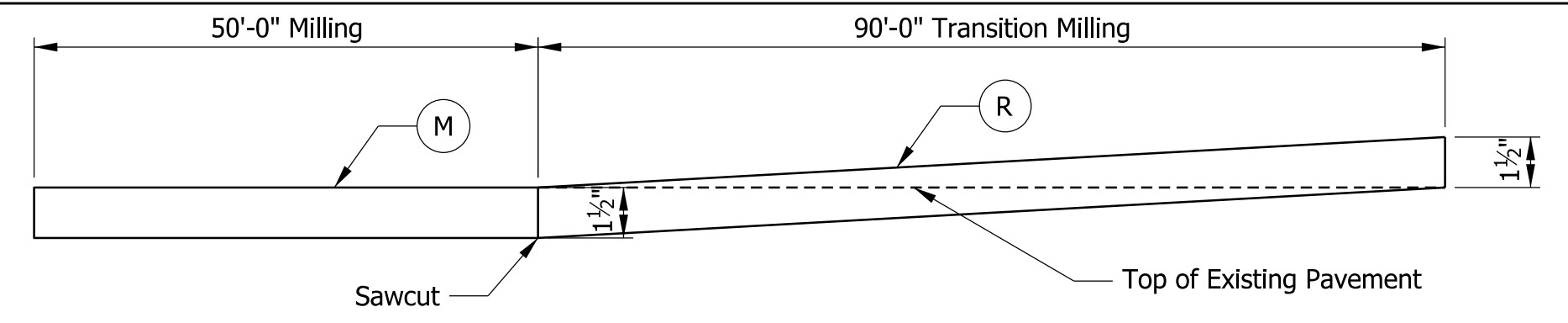
BRIDGE FILE	
064-31-10475	
DESIGNATION	
1900066	
SHEETS	
1	of 22
CONTRACT	PROJECT
B-42399	1900066

Plot: 8/31/2023 9:30 AM

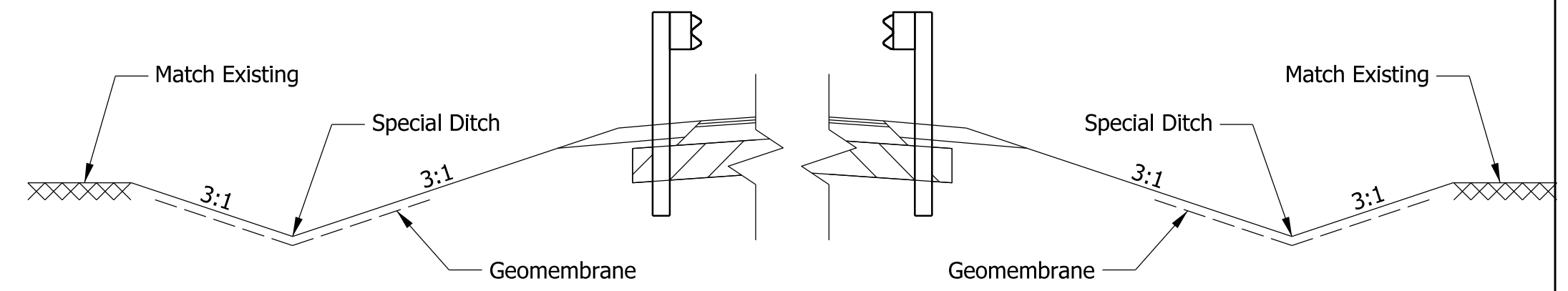
File: pw:\indot-pw.bentley.com\indot-pw-01\Documents\Seymour\1900066\Design\MS\Ttl Title.dgn
Model:BR_Title Sheet



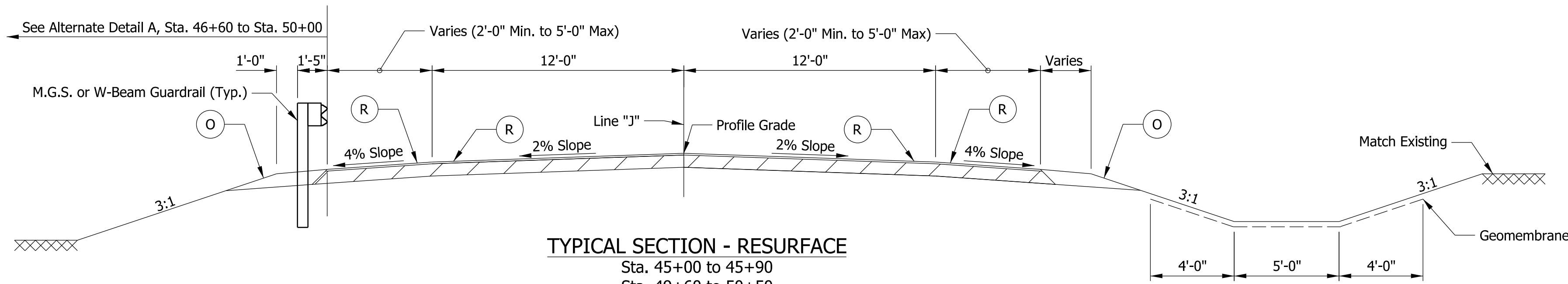
TYPICAL SECTION - INCIDENTAL Line "J"
 Sta. 44+50 to 45+00
 Sta. 50+50 to 51+00
 Scale: 1/4" = 1'-0"



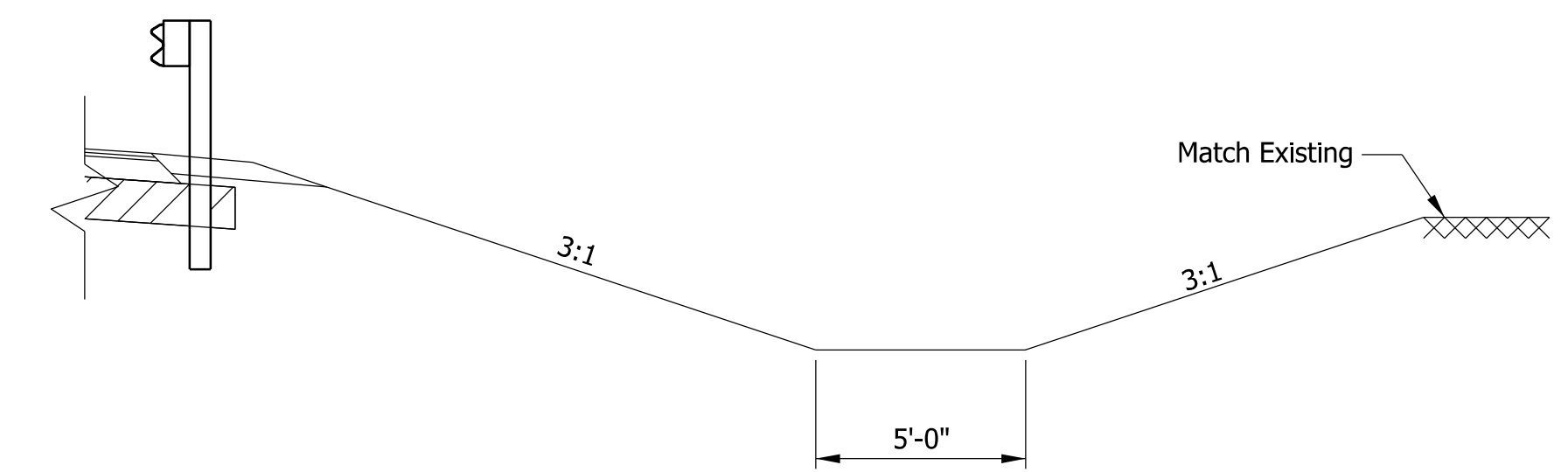
TRANSITION MILLING DETAIL
 Sta. 45+00 to 45+90
 Sta. 49+60 to 50+50
 Scale: None



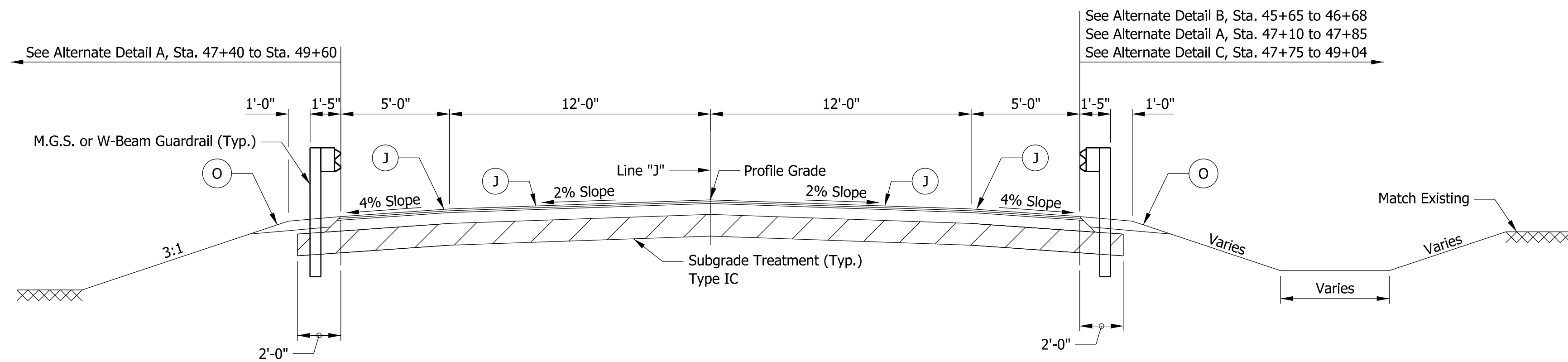
ALTERNATE DETAIL A
 Sta. 47+40 to 50+05 Lt.
 Sta. 47+10 to 47+85 Rt.
 Scale: 1/4" = 1'-0"



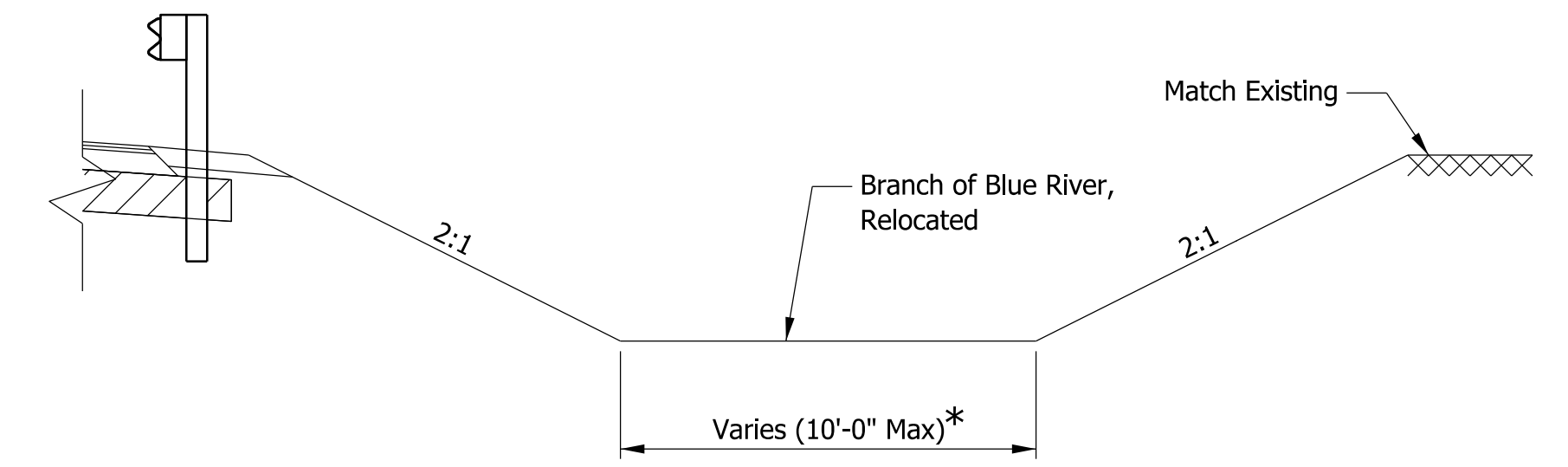
TYPICAL SECTION - RESURFACE
 Sta. 45+00 to 45+90
 Sta. 49+60 to 50+50
 Scale: 1/4" = 1'-0"



ALTERNATE DETAIL B
 Sta. 45+65.00 to 46+68.00
 Scale: 1/4" = 1'-0"



TYPICAL SECTION - FULL DEPTH
 Sta. 45+90 to 49+60
 Scale: 1/4" = 1'-0"



ALTERNATE DETAIL C
 Sta. 47+75.00 to 49+04.00
 Scale: 1/4" = 1'-0"

* See Layout Sheet for Bottom Width and Location of Branch of Blue River, Relocated

LEGEND

- (J) 165 lbs/syd QC/QA-HMA, 3, 64, Surface, 9.5 mm on 275 lbs/syd QC/QA-HMA, 3, 64, Intermediate, 19.0 mm on 660 lbs/syd QC/QA-HMA, 3, 64, Base, 25.0 mm on Subgrade Treatment Type IC on Geotextile for Pavement, Type 2B
- (R) 165 lbs/syd QC/QA-HMA, 3, 64, Surface, 9.5 mm
- (M) Milling 1 1/2 in., 165 lbs/syd QC/QA-HMA, 3, 64, Surface, 9.5 mm
- (O) Compacted Aggregate No. 53

DATE	REVISION

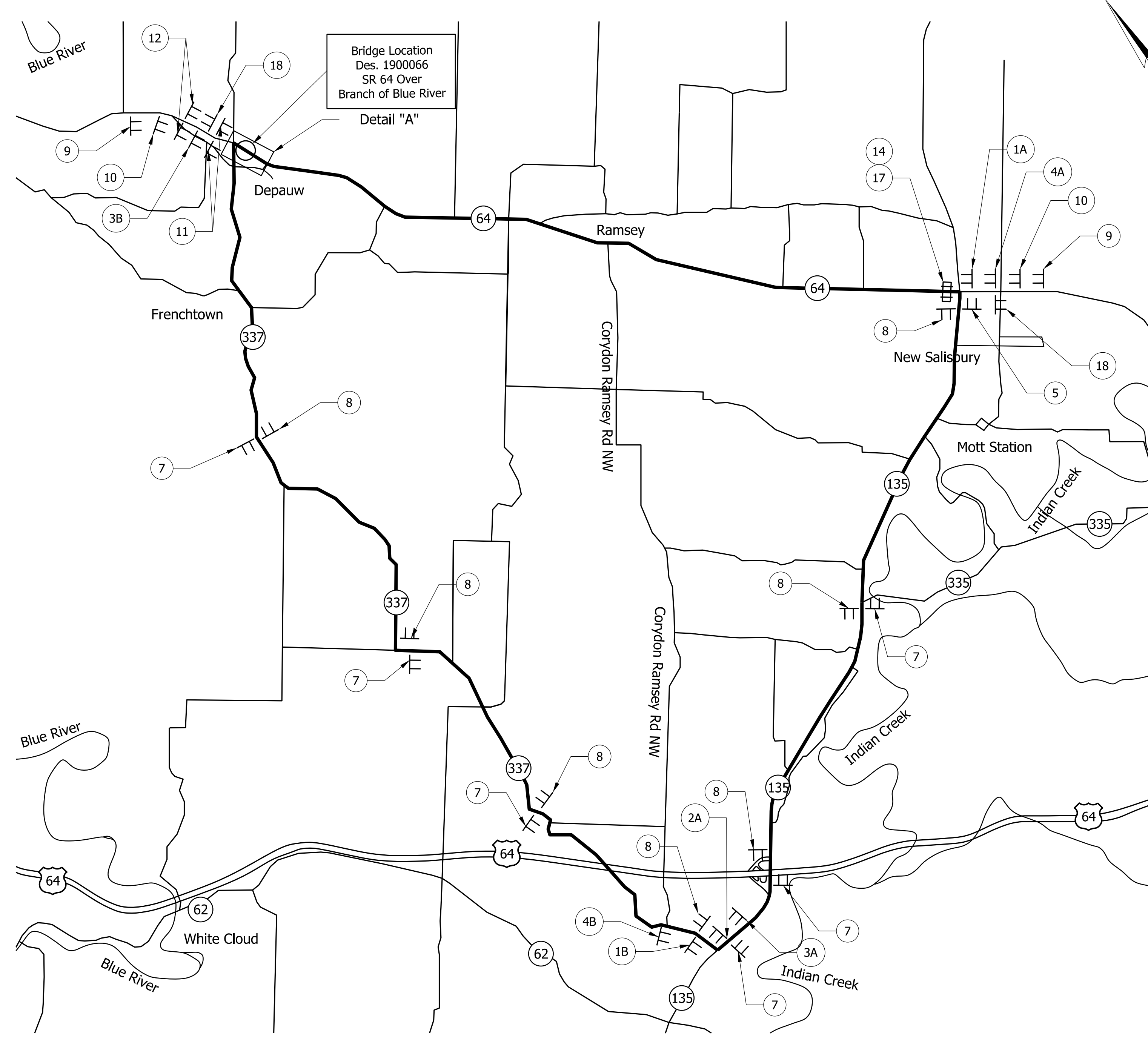
RECOMMENDED FOR APPROVAL	DESIGN ENGINEER	DATE
DESIGNED: ARS	7/2023	DRAWN: ARS
CHECKED: JRL	8/2023	CHECKED: JRL

INDIANA DEPARTMENT OF TRANSPORTATION	
TYPICAL CROSS SECTIONS	

SCALE	BRIDGE FILE
1/4" = 1'-0"	064-31-10475
	DESIGNATION
	1900066
	SHEETS
	4 of 22
CONTRACT	PROJECT
B-42399	1900066

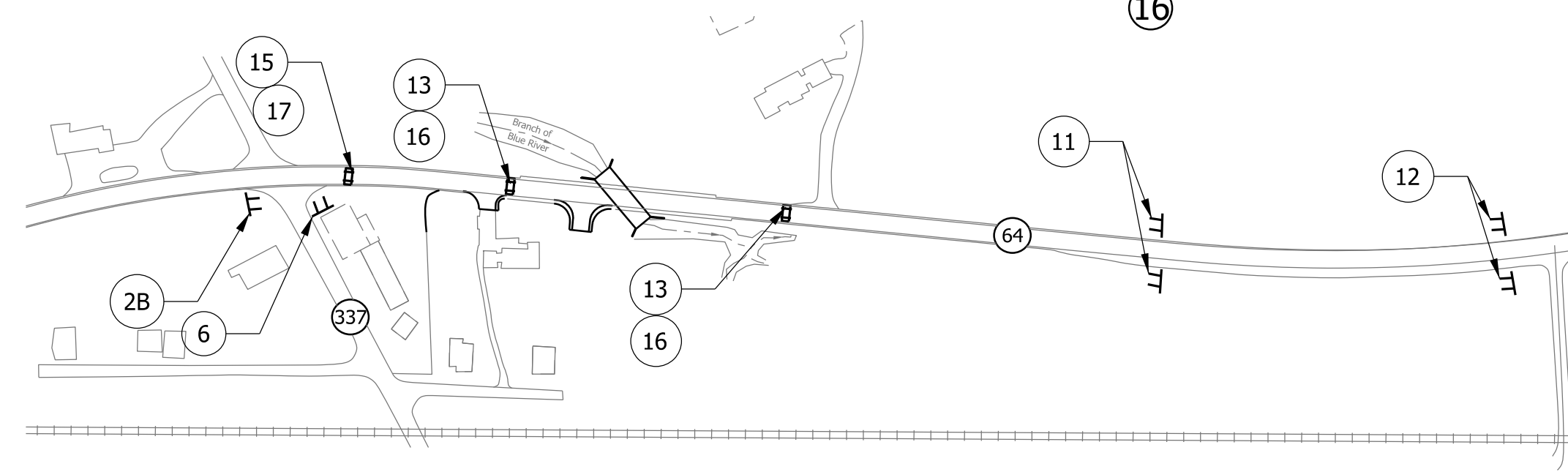
Plot: 8/31/2023 9:30 AM

File: pw:\indot-pw.bentley.com\indot-pw-01\Documents\Seymour\1900066\Design\MS\Tht Typical Section.dgn
 Model: BR_Detail Sheet



Bridge Location
Des. 1900066
SR 64 Over
Branch of Blue River
Detail "A"

DETOUR PLAN
Scale: None



DETAIL A
Scale: 200' = 1"

	XM 4-8 M3-4 (S)		XM 4-8 M3-4 (S)		XM 4-8 M3-4 (S)		XM 4-8 M3-4 (S)		XM 4-6S XM 4-8 M1-4 or M1-6 M6-1S
	XM 4-6S XM 4-8 M1-4 or M1-6 M6-1S		XM 4-8 M3-2 (S)		XM 4-8 M3-4 (S)				

QUANTITY SUMMARY TABLE	
ITEM	QUANTITY
Construction Sign Type A	14 Each
Road Closure Sign Assembly	4 Each
Detour Route Marker Assembly	23 Each
Barricade Type III-A	48 Lft.
Barricade Type III-B	48 Lft.

DATE	REVISION

RECOMMENDED FOR APPROVAL	DESIGN ENGINEER	DATE
DESIGNED: CMB	10/2020	DRAWN: TLA
CHECKED: ARS	10/2020	CHECKED: CMB

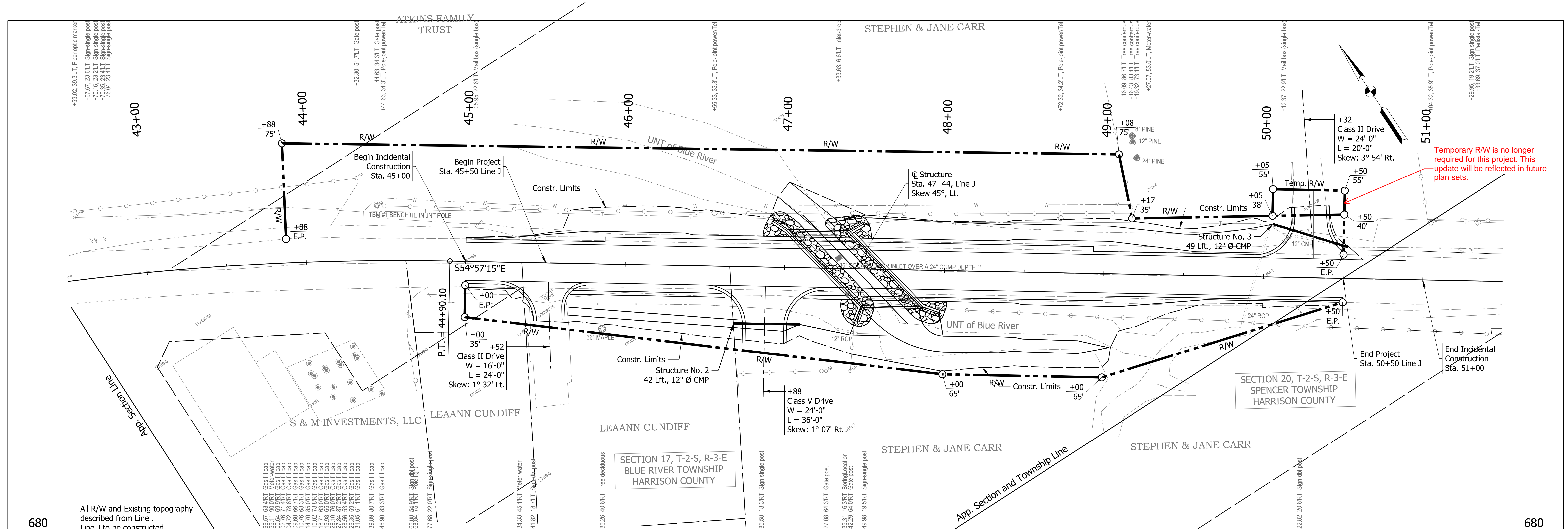
INDIANA
DEPARTMENT OF TRANSPORTATION

DETOUR

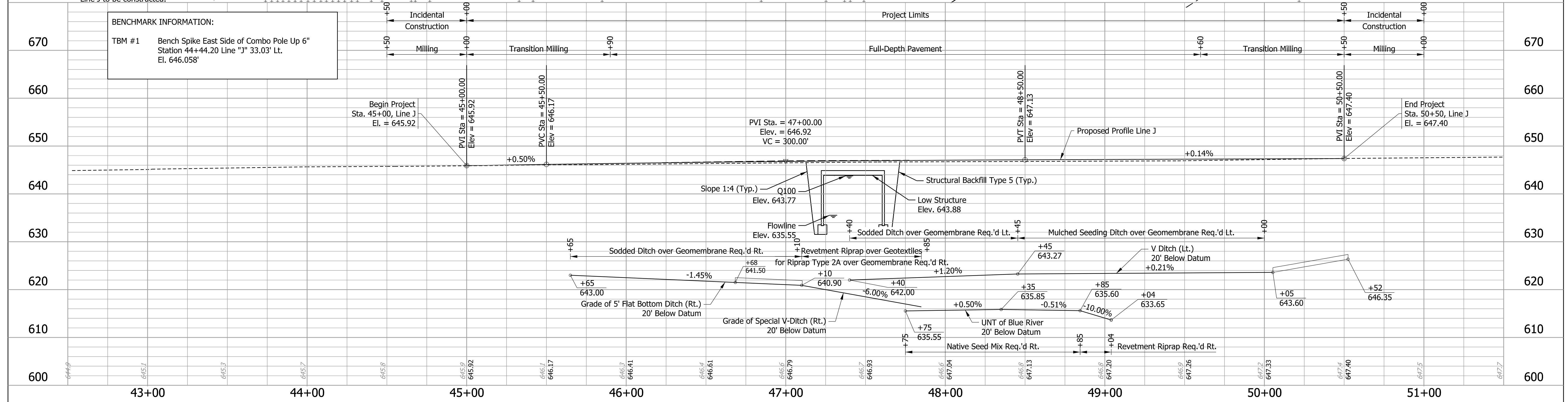
SCALE AS SHOWN	BRIDGE FILE 064-31-10475
DESIGNATION 1900066	SHEETS 5 of 22
CONTRACT B-42399	PROJECT 1900066

Plot: 8/31/2023 9:30 AM

File: pw:\indot-pw.bentley.com\indot-pw-01\Documents\Seymour\1900066\Design\MS\Tht Detour Model:BR_Detail Sheet



Temporary R/W is no longer required for this project. This update will be reflected in future plan sets.

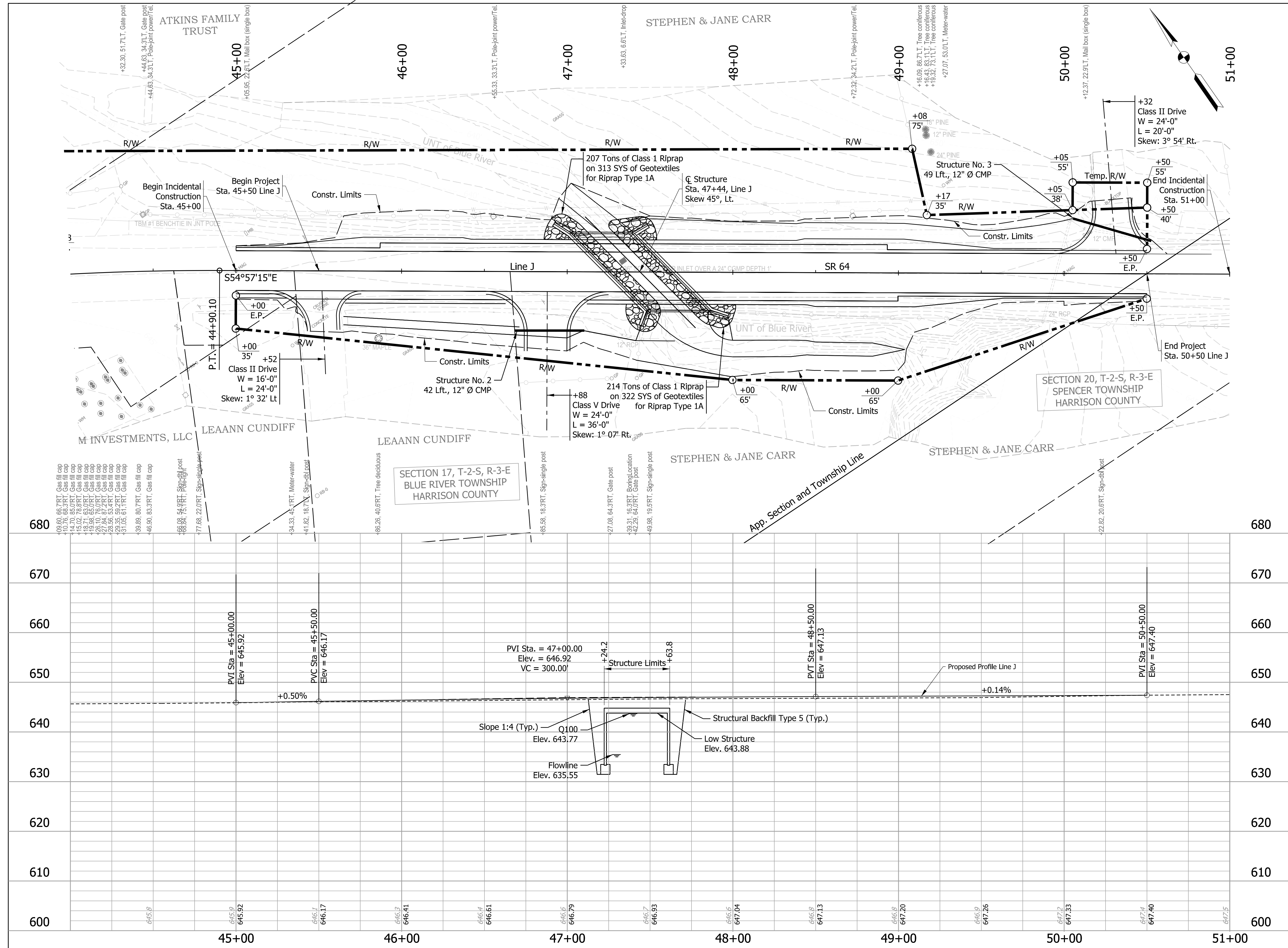


BENCHMARK INFORMATION:
TBM #1 Bench Spike East Side of Combo Pole Up 6" Station 44+44.20 Line "J" 33.03' Lt. El. 646.058'

RECOMMENDED FOR APPROVAL DESIGNED: ARS 7/2023 CHECKED: JRL 8/2023	DESIGN ENGINEER DATE	INDIANA DEPARTMENT OF TRANSPORTATION PLAN AND PROFILE - LINE "J"	SCALE 1" = 30'-0" Horizontal 1" = 10'-0" Vertical	BRIDGE FILE 064-31-10475 DESIGNATION 1900066
	DRAWN: ARS 7/2023 CHECKED: JRL 8/2023		SURVEY BOOK 6	SHEETS of 22
	CONTRACT B-42399		PROJECT 1900066	

Plot: 8/31/2023 9:30 AM

File: pw:\indot-pw.bentley.com\indot-pw-01\Documents\Seymour\1900066\Design\MS\Sh Plan and Profile Model: Line J - Plan and Profile [Sheet]



PRESENT STRUCTURE
 The existing structure (064-31-06286 A) is a precast three-sided structure built in 1950. The clear roadway width is 28 ft with a single span of 24 ft. The structure has a 45 deg. skew Lt. The existing structure is to be removed.

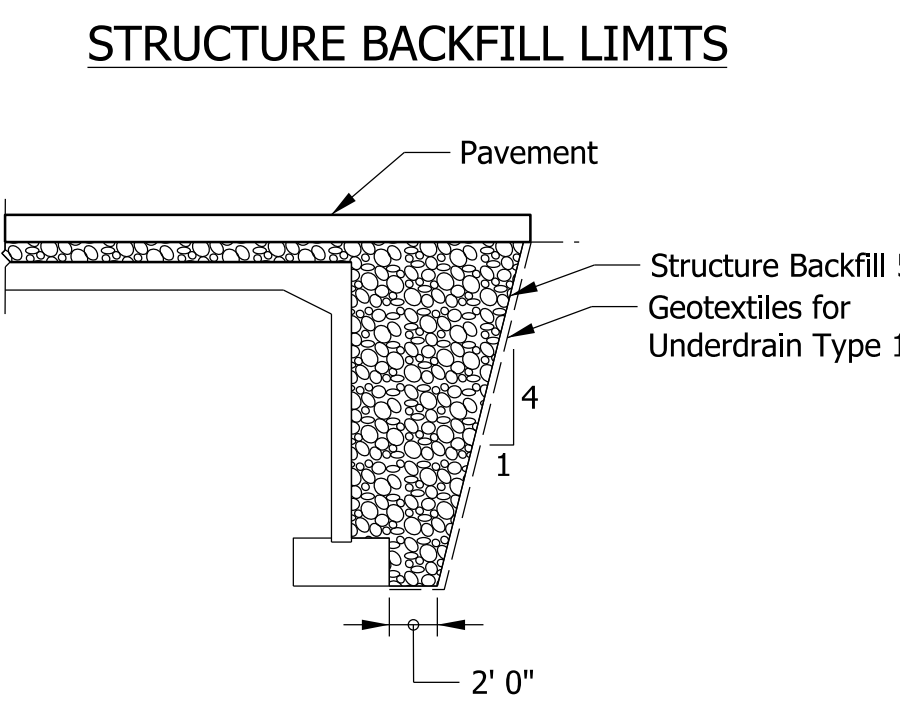
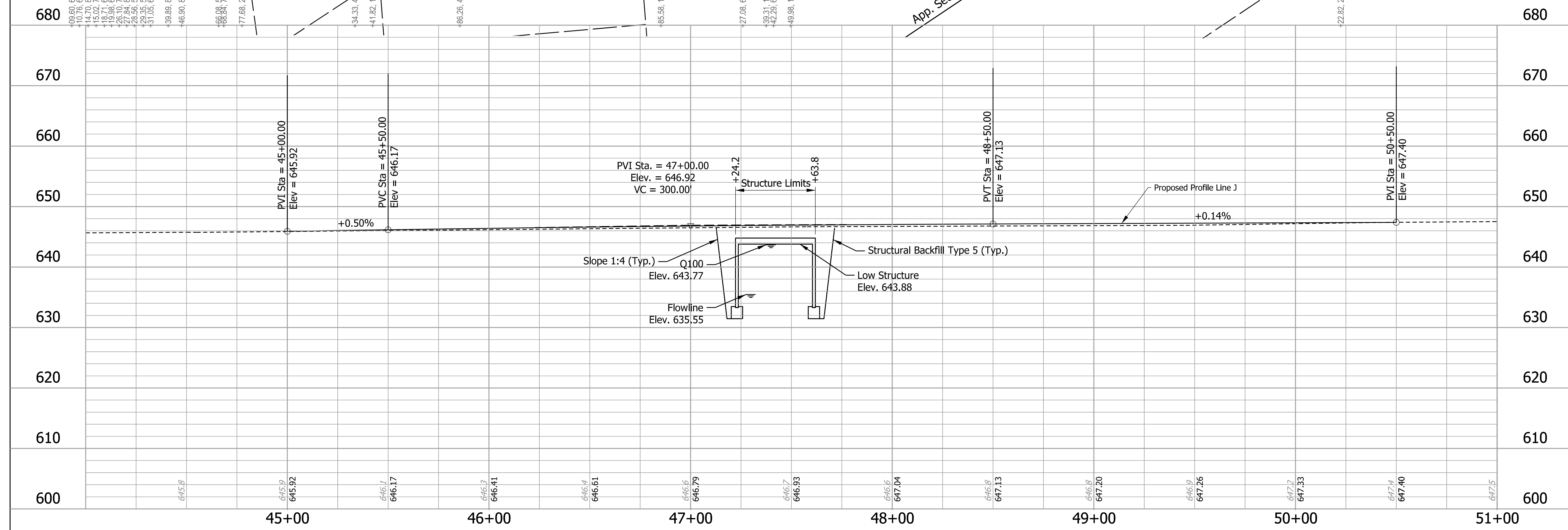
HYDRAULIC DATA

Waterway Opening Required	150.96 Sq. ft.
Waterway Opening Provided	213.7 Sq. ft.
Drainage Area	2.45 Sq. mi.
Design Discharge, Q100	900 Cfs.
Velocity Q100 Elev.	643.77 ft.
Estimated Scour Elev.	N/A
Backwater at Q100	0.43 ft.
Existing Waterway Opening	142.3 Sq. ft.
Existing Backwater	0.52 ft.
Upper Limit of Wet Exc. Elev.	N/A
Low Structure Elev.	643.80 ft.
Existing Low Structure Elev.	643.67 ft.

EARTHWORK TABULATION

Fill + 20%	483 Cys.
Common Excavation	873 Cys.
Usable Waterway Excavation (70%)	147 Cys.
Surplus Foundation Excavation	333 Cys.
Waste	870 Cys.
Total Waterway Excavation	210 Cys.
Benching (Estimated)	531 Cys.

No direct payment. Benching will not be paid for as Common Excavation.



CAST-IN-PLACE THREE-SIDED, FLAT TOP CONCRETE STRUCTURE
 SPAN: AT 26'-0"; RISE: 10'-4",
 34'-0" CLEAR ROADWAY; 45° SKEW LT.
 SR 64 OVER UNT OF BLUE RIVER
 IN HARRISON COUNTY

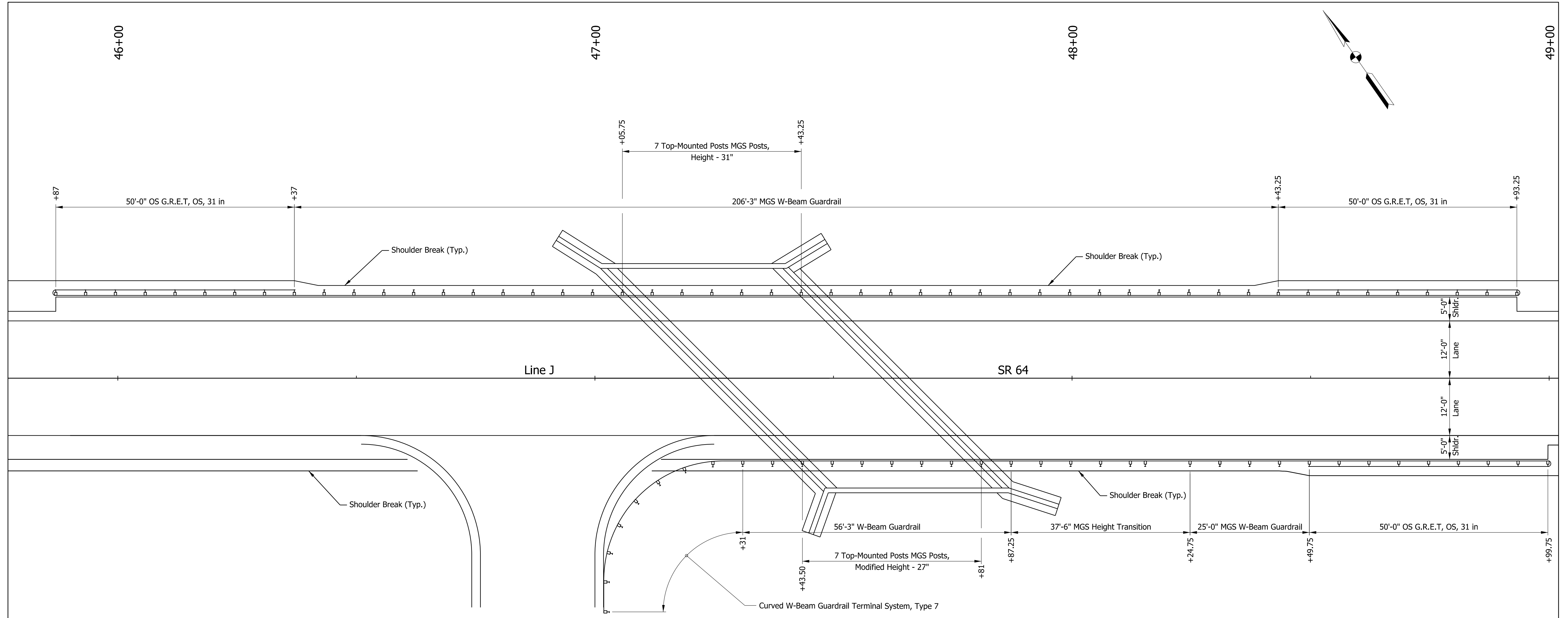
Plot: 8/31/2023 9:31 AM

File: pw:\indot-pw.bentley.com\indot-pw-01\Documents\Seymour\1900066\Design\MS\Sh Layout Model:Line J-1 - Layout Sheet [Sheet]

RECOMMENDED FOR APPROVAL	DESIGN ENGINEER	DATE	
DESIGNED: ARS	7/2023	DRAWN: ARS	7/2023
CHECKED: JRL	8/2023	CHECKED: JRL	8/2023

INDIANA DEPARTMENT OF TRANSPORTATION	
LAYOUT	

HORIZONTAL SCALE	BRIDGE FILE
1"=30'	064-31-10475
VERTICAL SCALE	DESIGNATION
1"=10'	1900066
SURVEY BOOK	SHEETS
10	of 22
CONTRACT	PROJECT
B-42399	1900066



GUARDRAIL LAYOUT
Scale: 1" = 10'-0"

LOCATION		MGS W-BEAM GUARDRAIL LENGTH																				REMARKS			
FROM STATION	TO STATION	LEFT	MEDIAN LEFT	MEDIAN RIGHT	RIGHT	STANDARD POST AT 6 FT 3 IN. SPA.	STANDARD POST AT 3 FT 1.5 IN. SPA.	DOUBLE FACED AT 6 FT 3 IN. SPA.	DOUBLE FACED AT 3 FT 1.5 IN. SPA.	HEIGHT TRANSITION	GUARDRAIL TRANSITION WITH CURB	GUARDRAIL TRANSITION WITHOUT CURB	STRUCTURE TOP-MOUNTED POST	CABLE TERMINAL ANCHOR	SHOP CURVED AT ____ FT. SPA.	LONG-SPAN GUARDRAIL	GUARDRAIL END TREATMENT TYPE OS	GUARDRAIL END TREATMENT TYPE MS	GUARDRAIL TRANSITION TYPE TGB	GUARDRAIL W-BEAM, 6 FT 3 IN. SPACING	GUARDRAIL, TERMINAL SYSTEM, W-BEAM CURVED, 7		GUARDRAIL REMOVE	GUARDRAIL RESET	IMPACT ATTENUATOR TYPE ____
						LFT	LFT	LFT	LFT	EACH	EACH	EACH	EACH	EACH	EACH	LFT	EACH	EACH	EACH	EACH	LFT		EACH	LFT	LFT
45+87.00	48+93.25	X				206.25											2								
47+31.00	48+99.75		X			25				1							1			56.25	1				
TOTALS						231.25				1			14				3			56.25	1				

RECOMMENDED FOR APPROVAL _____
DESIGN ENGINEER DATE

DESIGNED: ARS 7/2023 DRAWN: ARS 7/2023

CHECKED: JRL 8/2023 CHECKED: JRL 8/2023

INDIANA DEPARTMENT OF TRANSPORTATION

GUARDRAIL LAYOUT

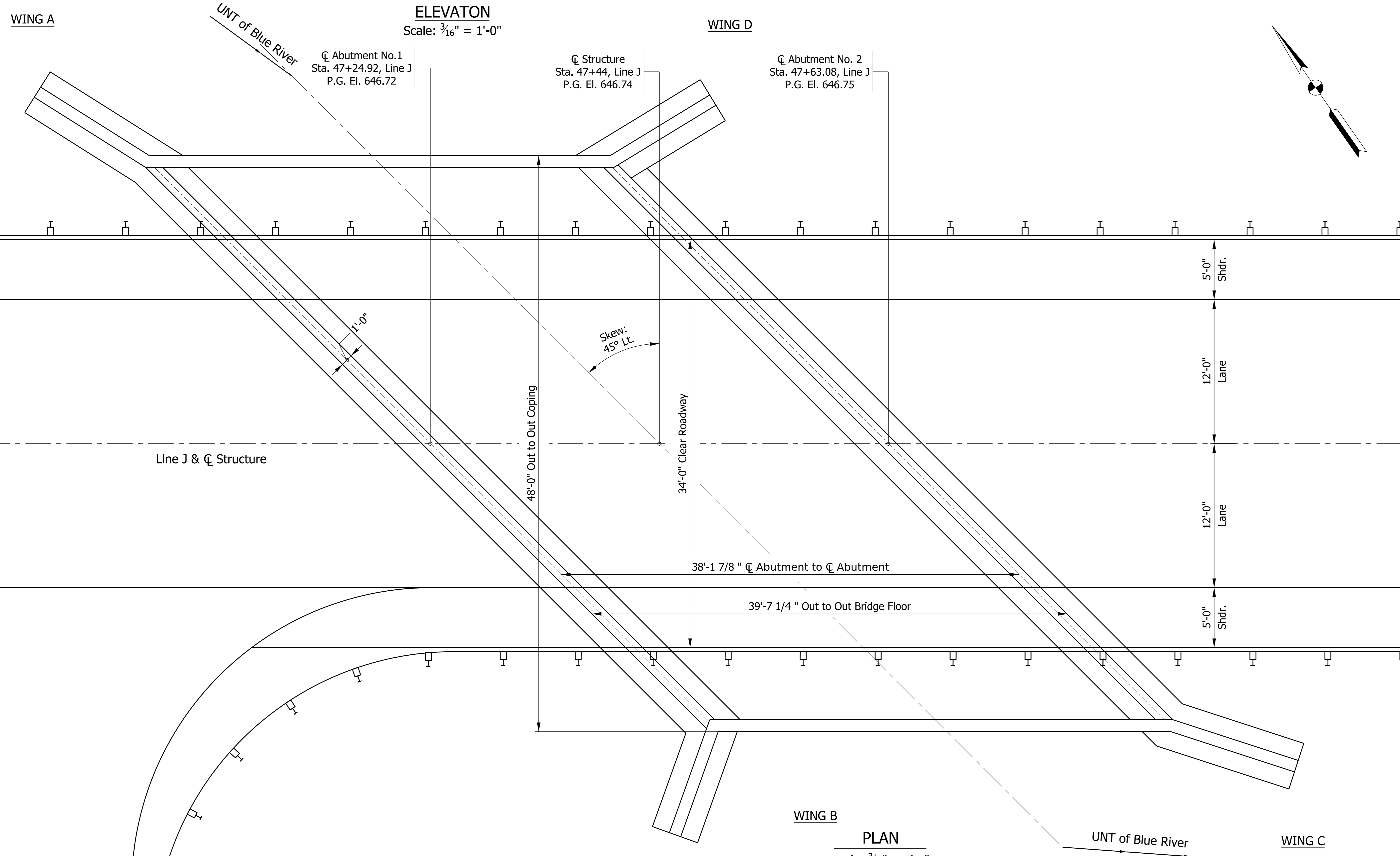
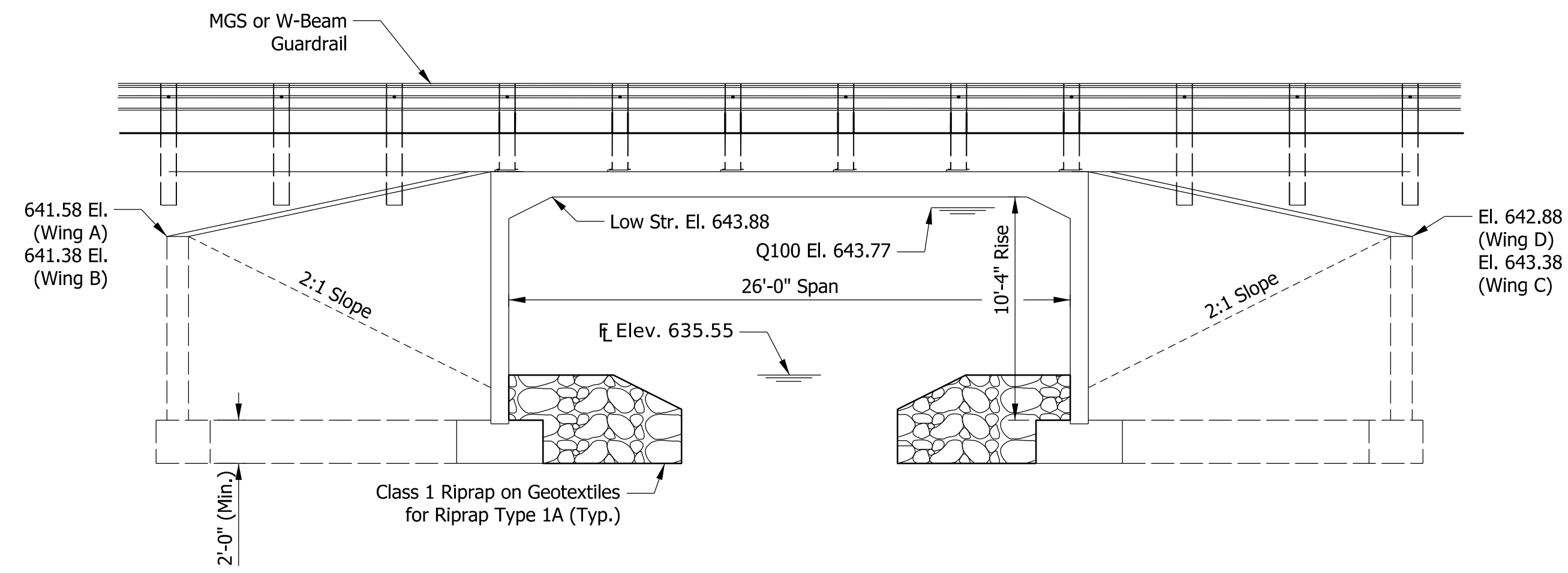
SCALE AS NOTED BRIDGE FILE 064-31-10475 DESIGNATION 1900066

SURVEY BOOK SHEETS 11 of 22

CONTRACT PROJECT 8-42399 1900066

Plot: 8/31/2023 9:31 AM

File: pw:\indot-pw.bentley.com\indot-pw-01\Documents\Seymour\1900066\Design\MS\Sh Guardrail Layout Model: Line J - Guardrail Plan View [Sheet]



ELEVATION
Scale: 3/16" = 1'-0"

PLAN
Scale: 3/16" = 1'-0"

CAST-IN-PLACE THREE-SIDED, FLAT TOP CONCRETE STRUCTURE
SPAN: AT 26'-0"; RISE: 10'-4",
34'-0" CLEAR ROADWAY; 45° SKEW LT.
SR 64 OVER UNT OF BLUE RIVER
IN HARRISON COUNTY

DATE	REVISION

RECOMMENDED FOR APPROVAL	DESIGN ENGINEER	DATE
DESIGNED: ARS	7/2023	DRAWN: ARS
		7/2023
CHECKED: JRL	8/2023	CHECKED: JRL
		8/2023

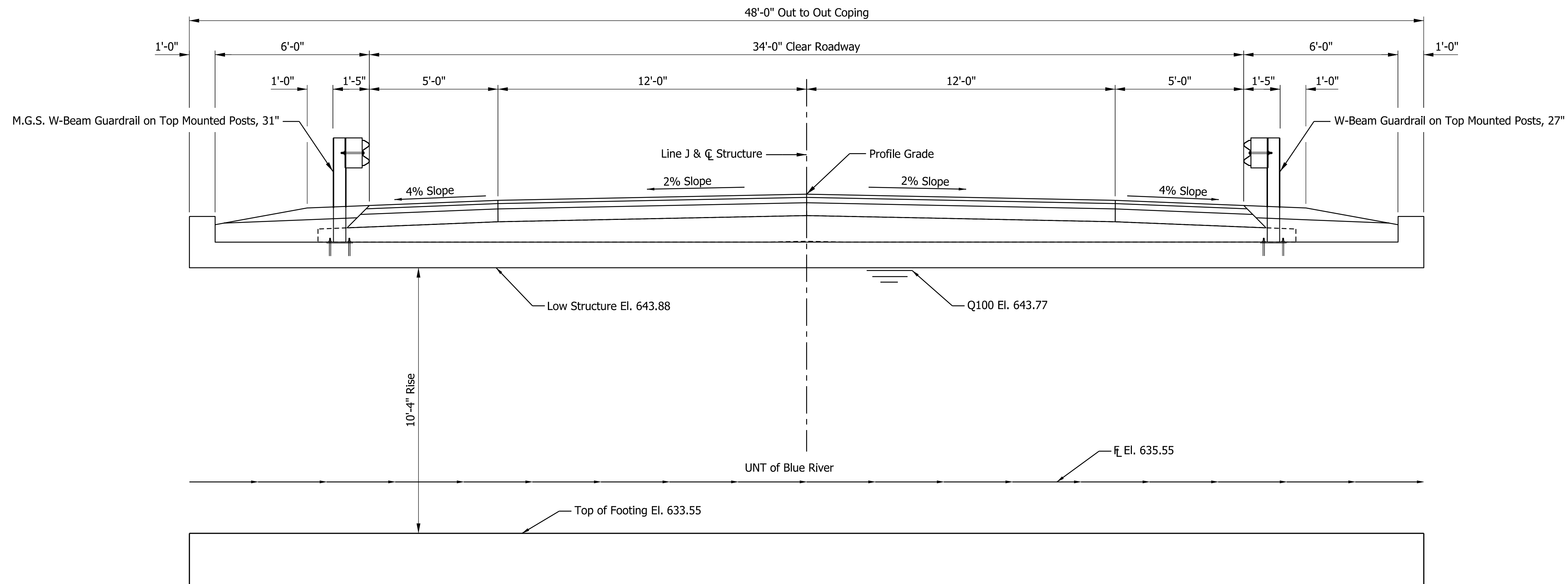
INDIANA
DEPARTMENT OF TRANSPORTATION

GENERAL PLAN

SCALE	BRIDGE FILE
AS NOTED	064-31-10475
	DESIGNATION
	1900066
	SHEETS
	12 of 22
CONTRACT	PROJECT
B-42399	1900066

Plot: 8/31/2023 9:31 AM

File: pw:\indot-pw.bentley.com\indot-pw-01\Documents\Seymour\1900066\Design\MS\Sht General Plan Model:BR_Detail Sheet



TYPICAL SECTION

Scale: 1/4" = 1'-0"

GENERAL NOTES

Reinforcing steel cover shall be 2 1/2" in top and 1" minimum in bottom of floor slab, 3" in footings, except bottom steel which shall be 4", and 2" in all other parts, unless noted.

DESIGN DATA

Designed for HL-93 loading, in accordance with AASHTO LRFD Bridge Design Specifications, Ninth Edition, 2020.

DEAD LOAD:
Actual weight plus 35 lb/ft² for future wearing surface.

DESIGN STRESSES

CONCRETE:
Class C f_c=4,000 psi
Class B f_c=3,000 psi
Class A f_c=3,500 psi

REINFORCING STEEL:
Grade 60 f_y=60,000 psi

WIND LOAD:
Designed for 70 mph horizontal wind loading in accordance with LRFD 3.8.1

SEISMIC DESIGN DATA:
Seismic Performance Zone ???
Acceleration Coefficient ???
Seismic Soil Profile Type ???

NOTE TO REVIEWER:
Seismic Design Data will be filled out when Geotechnical Addendum is provided.

CAST-IN-PLACE THREE-SIDED, FLAT TOP CONCRETE STRUCTURE
SPAN: AT 26'-0"; RISE: 10'-4",
34'-0" CLEAR ROADWAY; 45° SKEW LT.
SR 64 OVER UNT OF BLUE RIVER
IN HARRISON COUNTY

Plot: 8/31/2023 9:31 AM

DATE	REVISION

RECOMMENDED FOR APPROVAL	DESIGN ENGINEER	DATE
DESIGNED: ARS	7/2023	DRAWN: ARS
CHECKED: JRL	8/2023	CHECKED: JRL

INDIANA DEPARTMENT OF TRANSPORTATION	
GENERAL PLAN - TYPICAL SECTIONS	

SCALE	BRIDGE FILE
	064-31-10475
	DESIGNATION
	1900066
SHEETS	
	13 of 22
CONTRACT	PROJECT
8-42399	1900066

File: pw:\indot-pw.bentley.com\indot-pw-01\Documents\Seymour\1900066\Design\MS\Sht General Plan - Typical Section Model:BR_Detail Sheet