

To view this email as a web page, click [here](#).



## Indiana Department of Transportation Construction Update

September 19, 2025

### **UPDATE: Corridor improvement work continues on U.S. 31 in Franklin**

*New traffic changes for Phase 1 of construction*

**JOHNSON COUNTY, Ind.** - Indiana Department of Transportation contractor Milestone Contractors, L.P. is continuing work on Phase 1 and 2 of a six-phase intersection improvement project on U.S. 31 in Franklin.

#### *Phase 1:*

Phase 1 box culvert replacement work continues on U.S. 31 over Canary Ditch located between Acorn Drive and Schoolhouse Road. Beginning on or after Monday, September 22, drivers can expect the following traffic restrictions and changes for Phase 1 through late November, weather permitting:

- The left lane of southbound U.S. 31 will be closed between Lemley Street and Simon Road.
- The left lane of northbound U.S. 31 will be closed between Lemley Street and Simon Road.
- The right lane of northbound U.S. 31 traffic will be shifted to use the left lane of southbound U.S. 31.
- Traffic will be unable to turn left onto northbound U.S. 31 from Cedar Lane and Acorn Drive.

- Traffic will be unable to turn left onto Cedar Lane and Acorn Drive from northbound U.S. 31.

Phase 1 work is anticipated to be complete in late November, weather permitting. The previous update on Phase 1 can be found [here](#).

### Phase 2:

Phase 2 intersection improvement work continues on U.S. 31 between South Main Street and West Jefferson Street in Franklin. Information on this phase of the project can be found [here](#). Overall work on Phase 2 is expected to be complete by the end of 2025.

INDOT will continue to provide additional updates as work progresses. Motorists can receive updates and information from INDOT Southeast via [Facebook](#) and [X](#). Additional information on what is coming to U.S. 31 in Franklin is [here](#).

This project is part of a \$66.2 million intersection improvement contract awarded to Milestone in February 2025. Overall contract work is anticipated to be complete in 2028. Additional information about the overall contract can be found [here](#).

INDOT reminds drivers to slow down, use extra caution, and avoid distractions when traveling in and near work zones. All work is weather-dependent and schedules are subject to change.

---



## Intersection improvement work continues on U.S. 31 in Franklin

### PHASE 1 (shown on map)

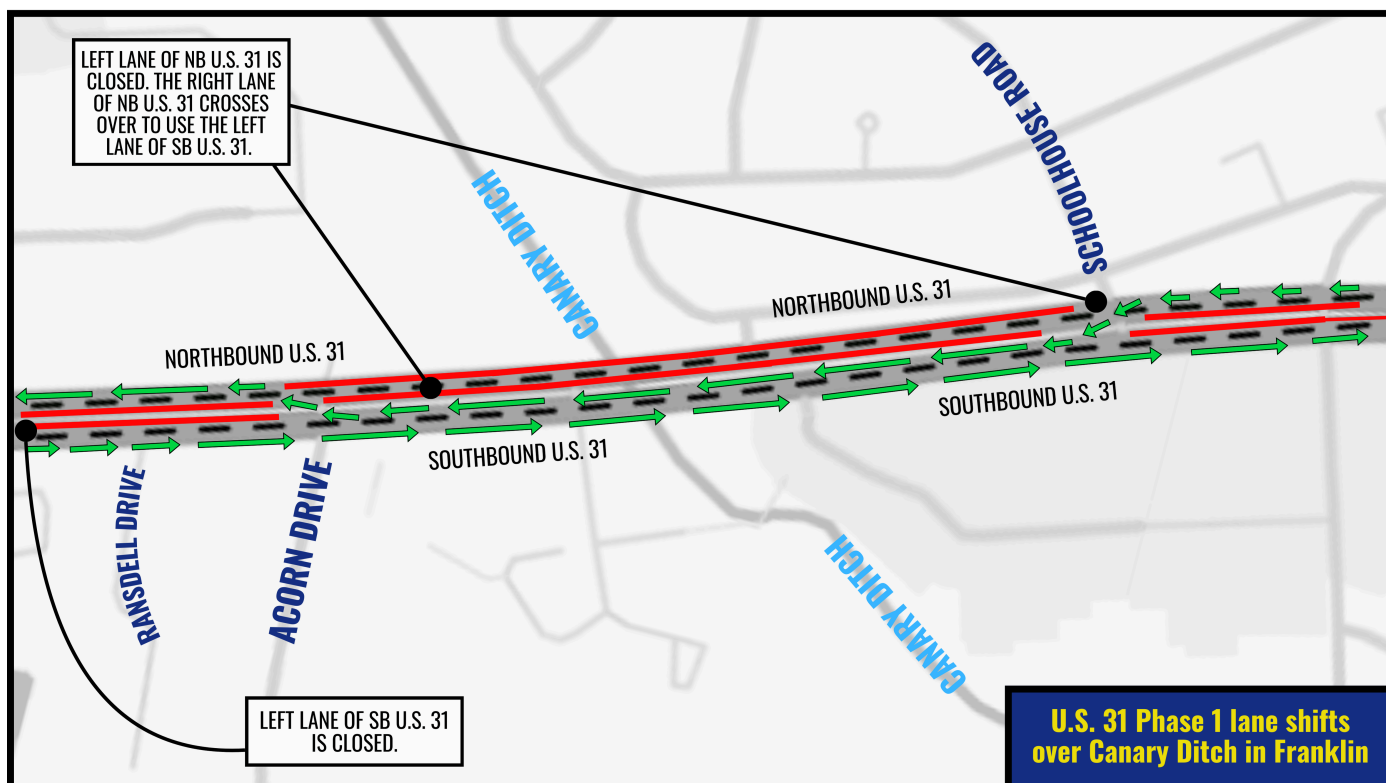
Phase 1 box culvert replacement work continues on U.S. 31 over Canary Ditch located between Acorn Drive and Schoolhouse Road. Beginning on or after Monday, September 22, drivers can expect the following traffic restrictions and changes for Phase 1 through late November, weather permitting:

- The left lane of southbound U.S. 31 will be closed between Lemley Street and Simon Road.
- The left lane of northbound U.S. 31 will be closed between Lemley Street and Simon Road.
- The right lane of northbound U.S. 31 traffic will be shifted to use the left lane of southbound U.S. 31.
- Traffic will be unable to turn left onto northbound U.S. 31 from Cedar Lane and Acorn Drive.
- Traffic will be unable to turn left onto Cedar Lane and Acorn Drive from northbound U.S. 31.

### PHASE 2

Phase 2 intersection improvement work continues on U.S. 31 between South Main Street and West Jefferson Street in Franklin.

(Map display: U.S. 31 Phase 1 box culvert replacement project area over Canary Ditch in Franklin. See [Facebook](#) and [X](#) for larger copy of map.)



(Map display: U.S. 31 Phase 1 lane shifts over Canary Ditch for box culvert replacement in Franklin. Not to scale.)

## Stay Informed

Motorists in Southeast Indiana can monitor road closures, road conditions, and traffic alerts any time via:

- Facebook: [facebook.com/INDOTSoutheast](https://facebook.com/INDOTSoutheast)
- Twitter: [@INDOTSoutheast](https://twitter.com/INDOTSoutheast)
- TrafficWise: [511in.org](https://511in.org)
- Mobile App: [iTunes App Store](https://itunes.apple.com) and the [Google Play store for Android](https://play.google.com/store/apps/details?id=com.indot)

## About the Indiana Department of Transportation

INDOT is responsible for planning, constructing, maintaining, and operating the State of Indiana's more than 29,000 highway lane miles and 5,700 bridges, and providing support for 4,500 rail miles and 127 aviation facilities throughout the Hoosier State. With six district offices and over 3,500 employees, INDOT works to ensure safe, efficient, and reliable transportation infrastructure while supporting the state's economic vitality. The department is committed to fostering innovation, sustainability, and safety in transportation planning and development, in addition to collaborating with local governments and private sector partners to meet the state's transportation needs. For the eighth consecutive year, Indiana has placed in the top ten in the nation for infrastructure in CNBC's "America's Top States for Business" rankings. Learn more at [in.gov/indot](https://in.gov/indot).

## About Buckle Up Phone Down

Buckle Up Phone Down is a safety initiative adopted by the Indiana Department of Transportation in late 2023. Unrestrained motorists and passengers, as well as distracted driving continue to be contributing factors in fatal and serious injury crashes on Indiana roadways. Buckle Up Phone Down is one of many efforts to change driver behavior and improve roadway safety across Indiana.

The actions are simple: when you get into a vehicle, buckle up. If you are the driver, put the phone down. Every trip. Every time. Learn more and accept the challenge at [BUPDIN.com](https://BUPDIN.com).

## Customer Service

1-855-463-6848

[www.indot4u.com](https://www.indot4u.com)

## Media Contact

Sidney Nierman

812-525-4548

[snierman@indot.in.gov](mailto:snierman@indot.in.gov)

---

This email was sent by: Indiana Department of Transportation  
100 N. Senate Ave., Indianapolis, IN, 46204 US

## Privacy Notice

[Manage Preferences](#)

[Unsubscribe](#)