



BRIDGE REPLACEMENT

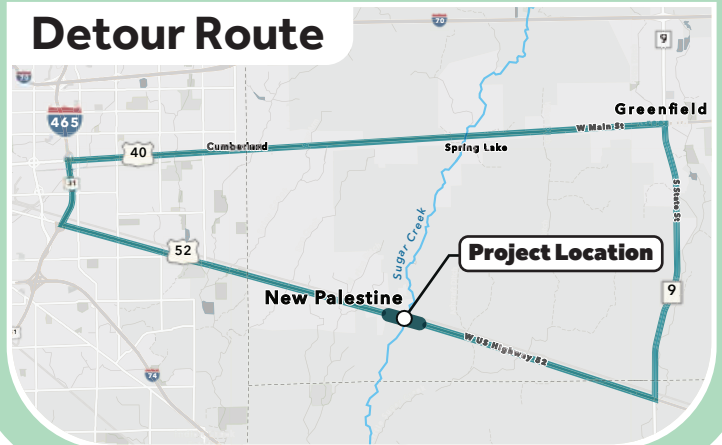
Sugar Creek



Project Information Sheet

Replace existing bridge, maintain wildlife crossings to reduce crashes from animal strikes, raise the elevation of US 52 to eliminate ponding on the bridge, add sidewalks to the bridge only on both sides of US 52 to align with the Town of New Palestine's future plans for the corridor, add lights to the north side of the bridge as a continuation of the lighting in Town.

Detour Route



FAQs

What is the purpose of this project?

The purpose of this project is to address poor existing structure conditions and improve safety by replacing the bridge on US 52 over Sugar Creek.

Will residents have access to private driveways during construction?

Access to all private drives will be maintained during construction.

When will the bridge close for construction?

US 52 will be closed during construction with a signed detour between Spring and Summer 2027.

Will the new bridge include any new safety features?

The new bridge will include sidewalks on both sides of US 52 and lighting along the north side as a continuation of the lighting in town.

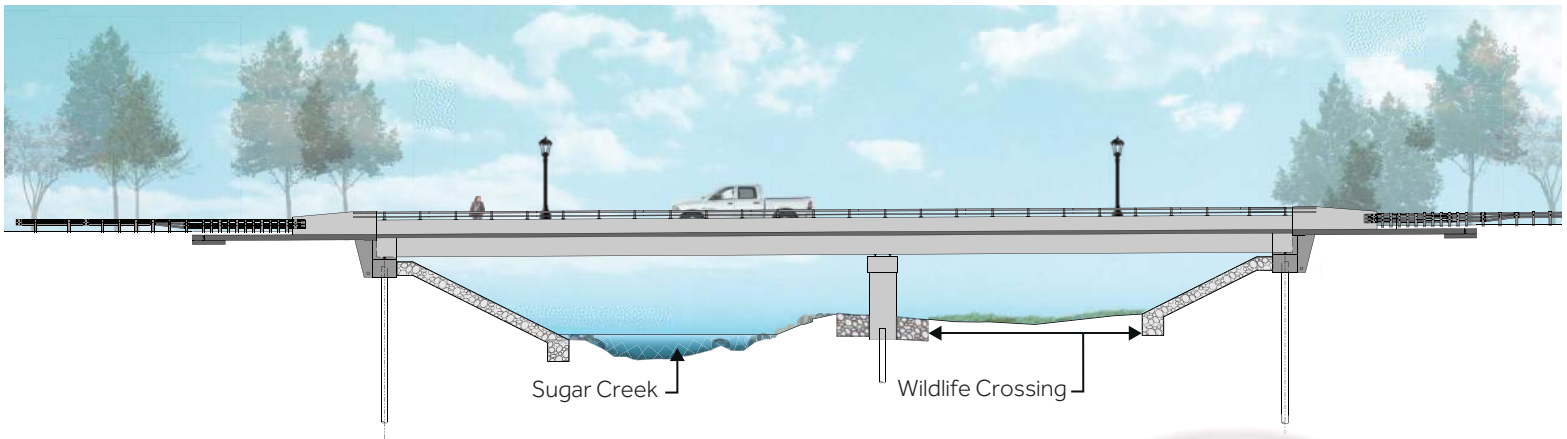


BRIDGE REPLACEMENT

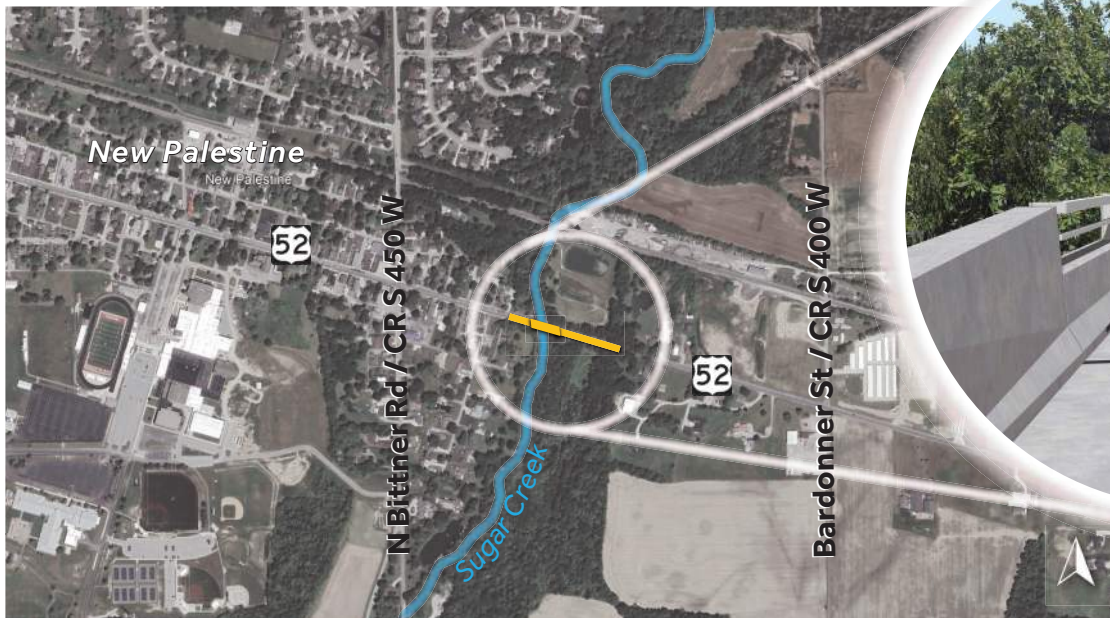
Sugar Creek



US 52 Bridge Elevation



Project Area



Project Schedule

