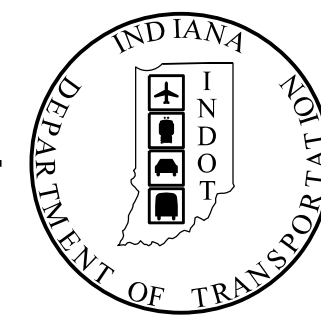


PROJECT	DESIGNATION
2100026	2100026
CONTRACT	
R-43755	

INDIANA DEPARTMENT OF TRANSPORTATION



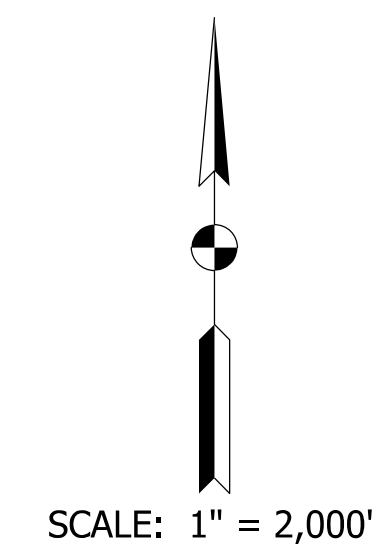
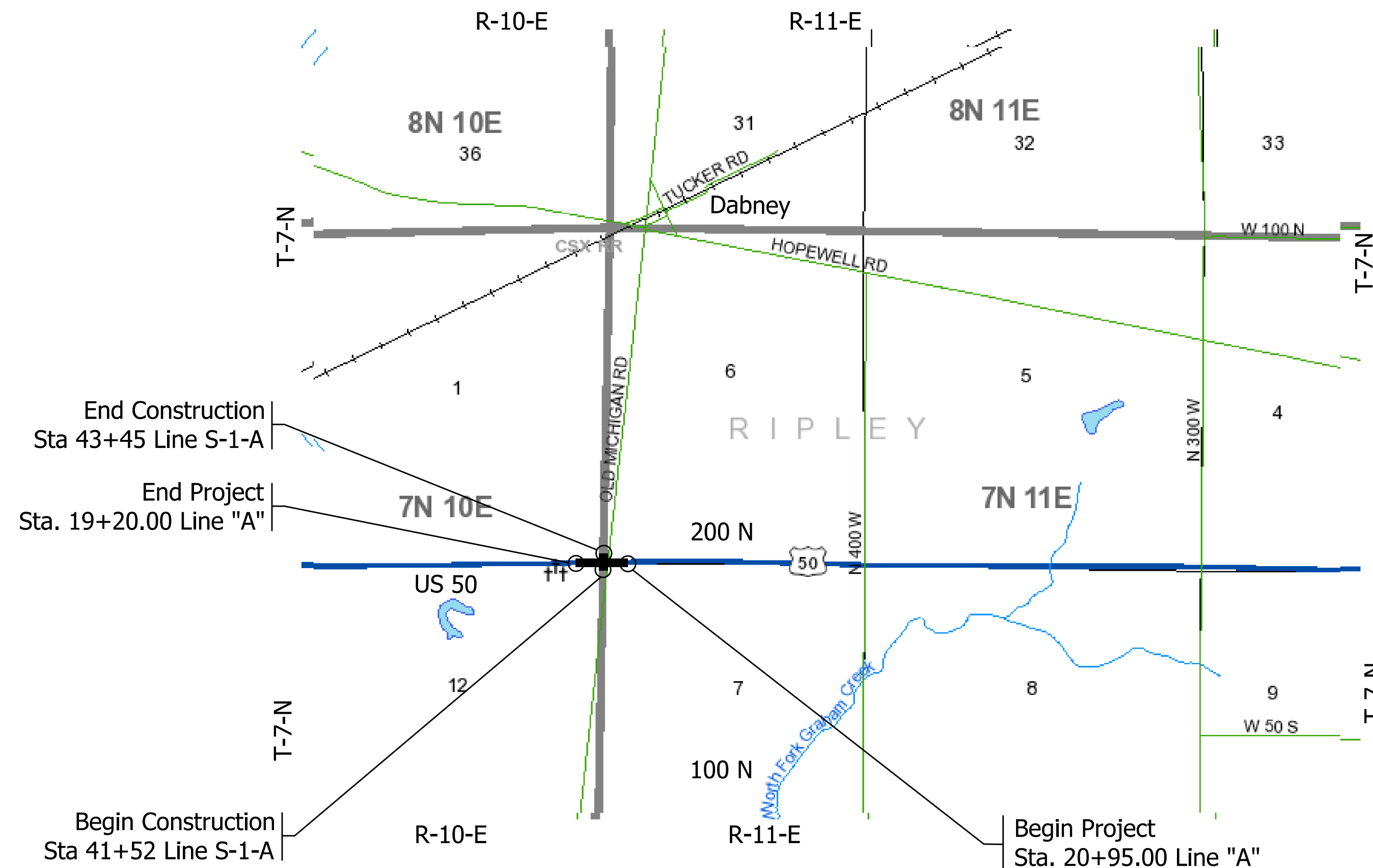
ROAD PLANS

Design Hearing Plans
October 2024

ROUTE: US 50 AT: OLD MICHIGAN ROAD

PROJECT NO. 2100026 P.E.
2100026 R/W
2100026 CONST.

US 50 & OLD MICHIGAN ROAD INTERSECTION IMPROVEMENT
Located approximately 2 Miles west of Town of Holton and 1 mile south of City of Dabney
Section 1,12, 6 & 7, T7N, R10E & R11E, Otter Township, Ripley County, Indiana

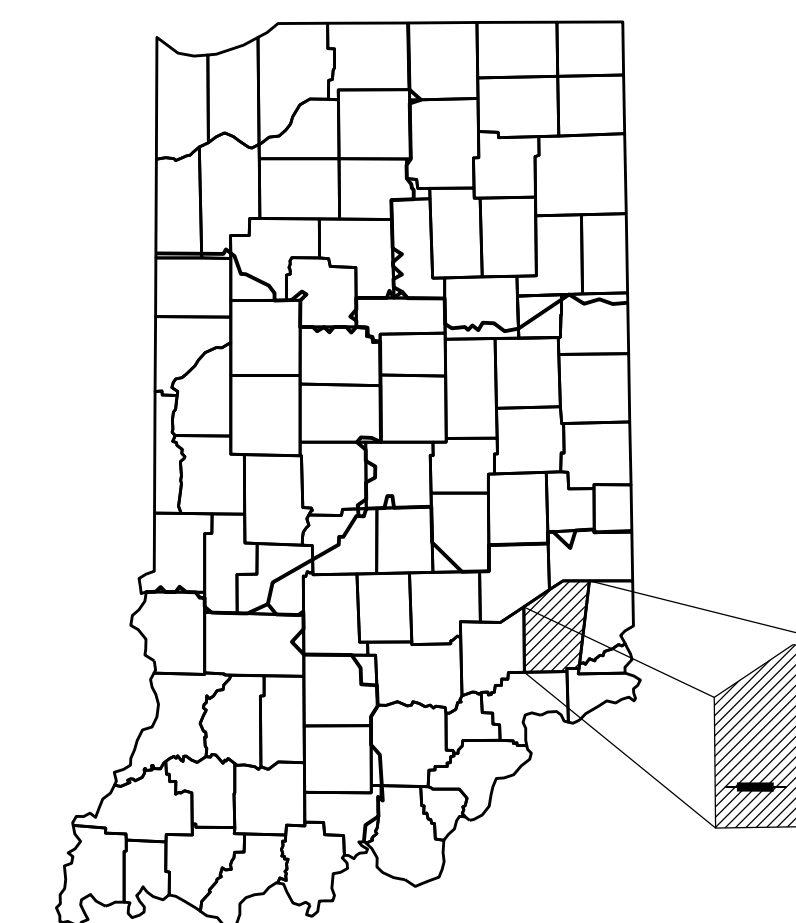


TRAFFIC DATA US 50	
A.A.D.T. (2026)	4041 V.P.D.
A.A.D.T. (2046)	4356 V.P.D.
D.H.V (2046)	436 V.P.H.
DIRECTIONAL DISTRIBUTION	Eastbound 59% & Westbound 41%
TRUCKS	24% A.A.D.T. 24% D.H.V.

DESIGN DATA	
DESIGN SPEED	55 M.P.H.
PROJECT DESIGN CRITERIA	Partial 3R (NON-FREEWAY)
FUNCTIONAL CLASSIFICATION	PRINCIPAL ARTERIAL
RURAL/URBAN	RURAL
TERRAIN	LEVEL
ACCESS CONTROL	NONE

TRAFFIC DATA Old Michigan Road	
A.A.D.T. (2026)	1109 V.P.D.
A.A.D.T. (2046)	1196 V.P.D.
D.H.V (2046)	120 V.P.H.
DIRECTIONAL DISTRIBUTION	Northbound 35% Westbound 65%
TRUCKS	5% A.A.D.T. 5% D.H.V.

DESIGN DATA	
DESIGN SPEED	45 M.P.H.
PROJECT DESIGN CRITERIA	Partial 3R (NON-FREEWAY)
FUNCTIONAL CLASSIFICATION	MINOR COLLECTOR
RURAL/URBAN	RURAL
TERRAIN	LEVEL
ACCESS CONTROL	NONE



PROJECT LOCATION SHOWN BY
Ripley County

LATITUDE: 39°04'30"N LONGITUDE: 85°20'55"W

ROADWAY LENGTH: 0.07 MI.
TOTAL LENGTH: 0.07 MI.
MAX. GRADE: 2.10 %

INDIANA DEPARTMENT OF TRANSPORTATION
STANDARD SPECIFICATIONS DATED 2024
TO BE USED WITH THESE PLANS.

X:\Projects\2022\2263\208150_INDOT_US_50_Sight\01_Const\Docs\CAD\Sheets\2018CV1.dgn

CERTIFIED BY: _____ DATE _____
REGISTERED PROFESSIONAL ENGINEER
STATE OF INDIANA NO. 910382
COVERING OVERALL DESIGN

NOT FOR
CONSTRUCTION
DLZ INDIANA, LLC



PLANS PREPARED BY:
DLZ INDIANA, LLC
138 N Delaware St,
Indianapolis, IN 46204
(317) 633-4120

APPROVED FOR LETTING: _____ DATE _____
INDIANA DEPARTMENT OF TRANSPORTATION

SCALE	1:2000
DESIGNATION	2100026
SHEETS	1 of 19
CONTRACT	R-43755
PROJECT	2100026

UTILITIES

TELEPHONE
Frontier
8001 W Jefferson Blvd
Fort Wayne, IN 46804
Mark Gibson
(260) 908-2444
utilitycordreg@ftr.com

WATER
Holton Community
Water Corporation
36 N. Old Michigan Rd.
Holton, IN 47023
Shawn Farrell
(812)689-6736
holtonwater@gmail.com

FIBER OPTIC/ TELEPHONE
SEI Communications
14005 US 50
Dillsboro, IN 47018
Colton Viel
(812) 667-5100
vielc@seidata.com

ELECTRIC
Southeastern Indiana
R.E.M.C. Electrical
PO Box 196
Osgood, IN 47037
Matt Probst
(812) 689-4111 Ext. 267
mattp@seiremc.com

COMMUNICATIONS
Great Plains Communications
P.O. Box 500
Blair, NE 68008
Brayden Linkel
(812) 623-3300 Ext. 5230
blinkel@gpcom.com

COMMUNICATIONS
Comcast
1600 W Fountain Dr
Bloomington, IN 47403
Steve McArtor
(812) 360-3090
steve_mcartor@comcast.com

GENERAL NOTES

It Is The Responsibility of the Contractor to Notify School Corporations and Emergency Services At Least Two Weeks Prior to Any Construction That Would Block or Limit Access. Contacts for School Corporations and Emergency Services:

- | | |
|--|---------------|
| 1. South Ripley Community School Corporation | (812)689-6282 |
| 2. Ripley County Sheriff Department | (812)689-5558 |
| 3. Versailles Fire Rescue | (812)689-5222 |

INDEX

SHEET NO.	SUBJECT
1	TITLE
2	INDEX
3	PLAT #1
4	TYPICAL SECTIONS
5	DETOUR ROUTE
6-8	MAINTENANCE OF TRAFFIC
9-11	PLAN AND PROFILE
12	INTERSECTION DETAIL
13	PAVEMENT MARKING AND SIGNING
14	MISCELLANEOUS TABLES
15-19	CROSS SECTIONS

REVISIONS

SHEET NO.	DATE	REVISED

X:\Projects\2022\263\208150_INDOT US 50_Sight\01_Constr\Drawings\CAD\Sheets\2018_IS01.dgn



**NOT FOR
CONSTRUCTION**

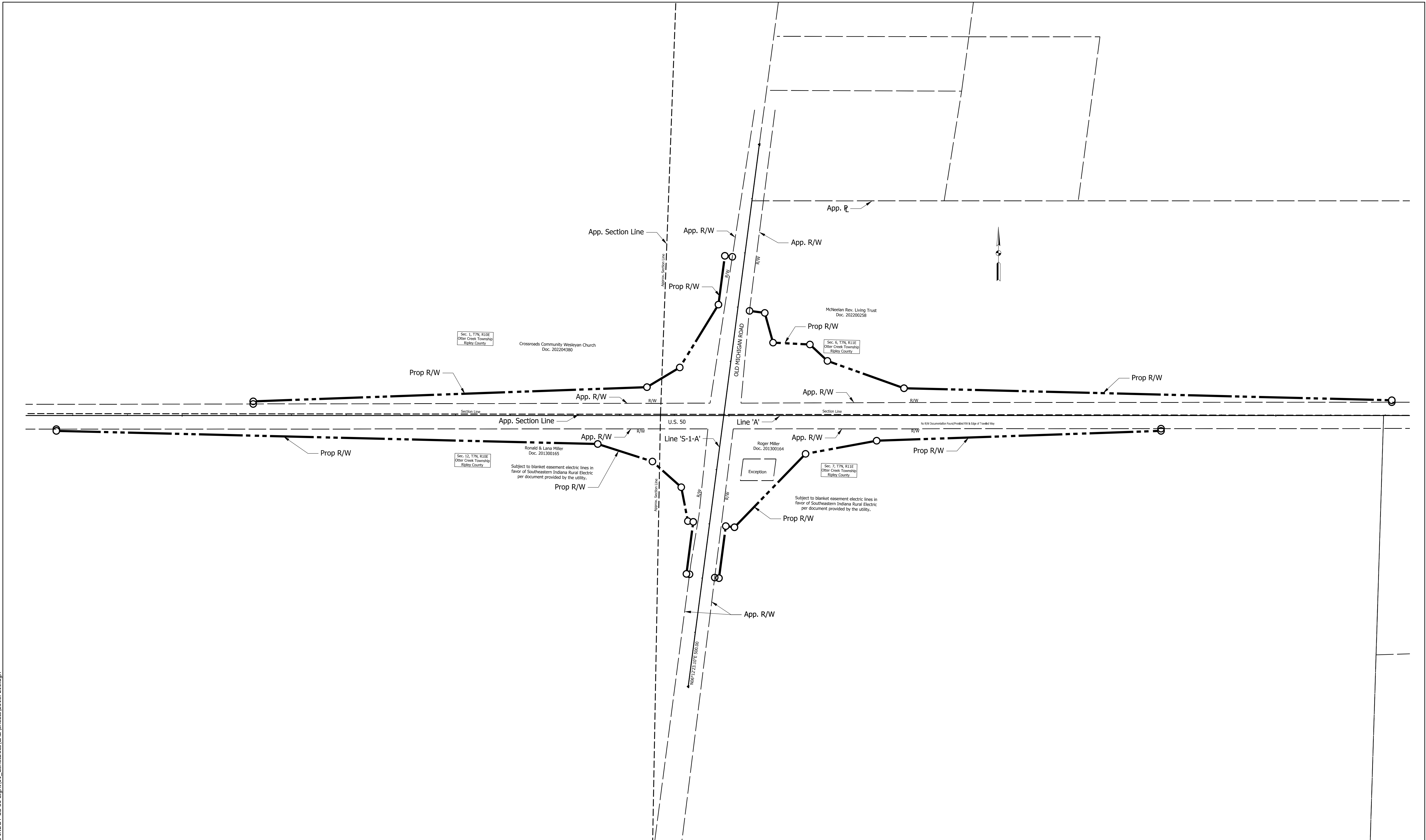
DLZ INDIANA, LLC

RECOMMENDED FOR APPROVAL _____	DESIGN ENGINEER _____	DATE _____
DESIGNED: AH	04/2024	DRAWN: DPH
04/2024	CHECKED: FS	04/2024

INDIANA DEPARTMENT OF TRANSPORTATION		
INDEX		

SCALE NONE	IMPROVEMENT 2100026
DESIGNATION 2100026	
SHEETS 2 of 19	
CONTRACT R-43755	PROJECT 2100026

X:\Projects\2022\263\208150_INDOT US 50_Sight\01_Const\Drawings\CAD\Sheets\2018PL10.dgn



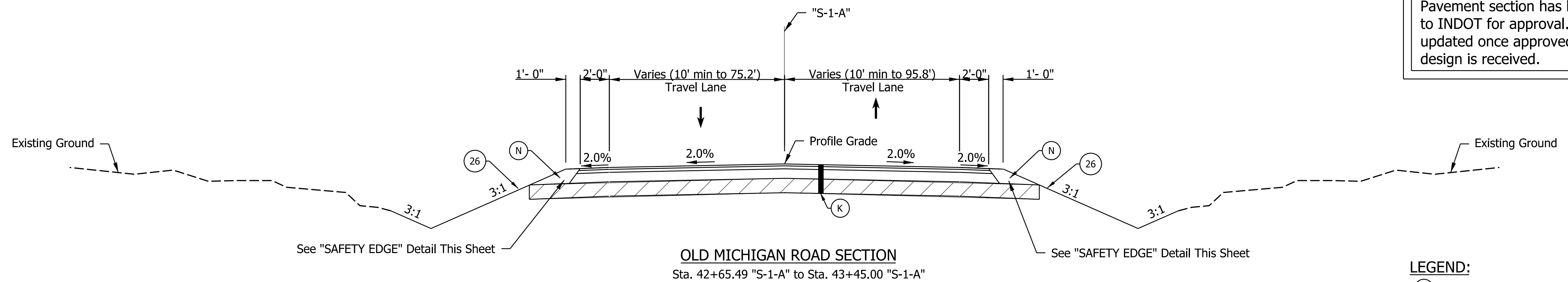
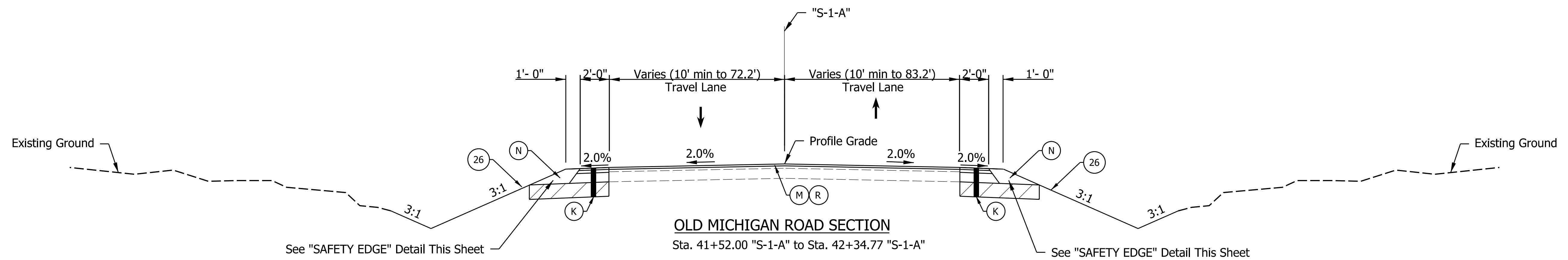
NOT FOR CONSTRUCTION
DLZ INDIANA, LLC

RECOMMENDED FOR APPROVAL	DESIGN ENGINEER:	DATE
DESIGNED: AH	04/2024	DRAWN: DPH
CHECKED: FS	04/2024	CHECKED: FS

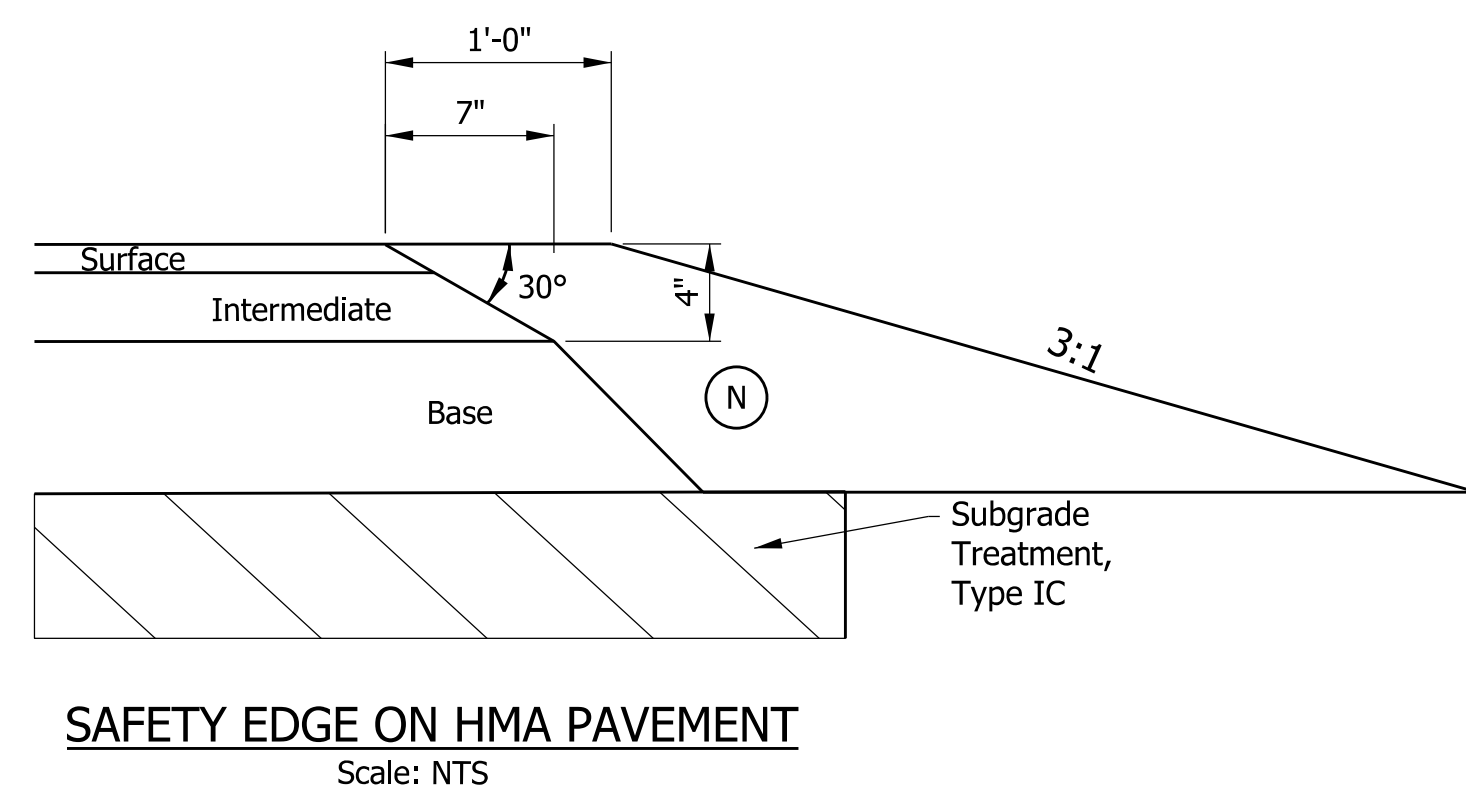
INDIANA DEPARTMENT OF TRANSPORTATION

PLAT #1

SCALE	IMPROVEMENT
1"=40'	
	DESIGNATION
	2100026
SURVEY BOOK	SHEETS
ELECTRONIC	3 of 19
CONTRACT	PROJECT
R-43755	2100026



Note to Reviewer:
Pavement section has been submitted to INDOT for approval. Plans will be updated once approved pavement design is received.



- LEGEND:**
- (F) Concrete Sidewalk, 6"
 - (K) HMA for Sidewalk Consisting of:
165 lbs/syd HMA Surface, Type A, on
220 lbs/syd HMA Intermediate, Type A, on
6" Compacted Aggregate, No. 53, on
Geotextile, Type 2A, on
Subgrade Treatment, Type IC
 - (M) Milling, Asphalt, 1.5 IN.
 - (P) 880 lbs/syd HMA for Patching, Type C,
165 lbs/syd HMA Surface, Type C, 9.5 mm, on
275 lbs/syd HMA Intermediate, Type C, 19.0 mm, on
440 lbs/syd HMA Base, Type C, 25.0 mm, on
3" Compacted Aggregate No. 53, on
Geotextile, Type 2A, on
Subgrade Treatment, Type IC
 - (R) 165 lbs/syd HMA Surface, Type A
 - (15) Combined Concrete Curb and Gutter
 - (26) Mulched Seeding, U

X:\Projects\2022\263\208150_INDOT US 50_Sight\01_Const\Draws\CAD\Sheets\2081Typ10.dgn



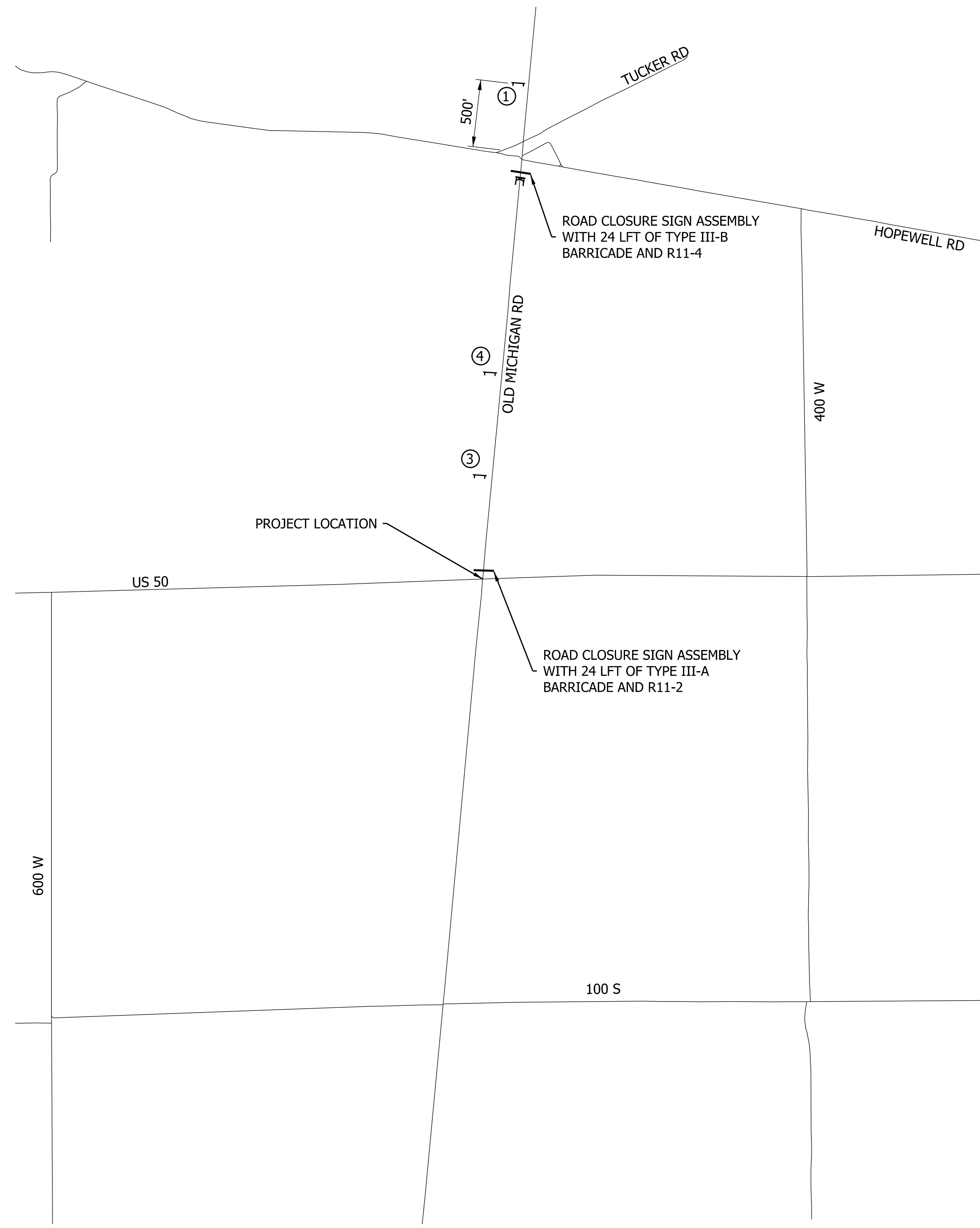
NOT FOR CONSTRUCTION
DLZ INDIANA, LLC

RECOMMENDED FOR APPROVAL	DESIGN ENGINEER	DATE
DESIGNED: AH	04/2024	DRAWN: DPH
CHECKED: FS	04/2024	CHECKED: FS

INDIANA DEPARTMENT OF TRANSPORTATION

TYPICAL SECTIONS

SCALE	IMPROVEMENT
1/4" = 1'-0"	
	DESIGNATION
	2100026
SURVEY BOOK	SHEETS
ELECTRONIC	4 of 19
CONTRACT	PROJECT
R-43755	2100026

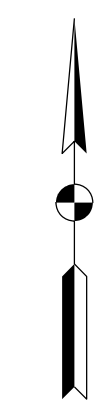


ROAD CLOSURE - SIGNS AND MARKERS

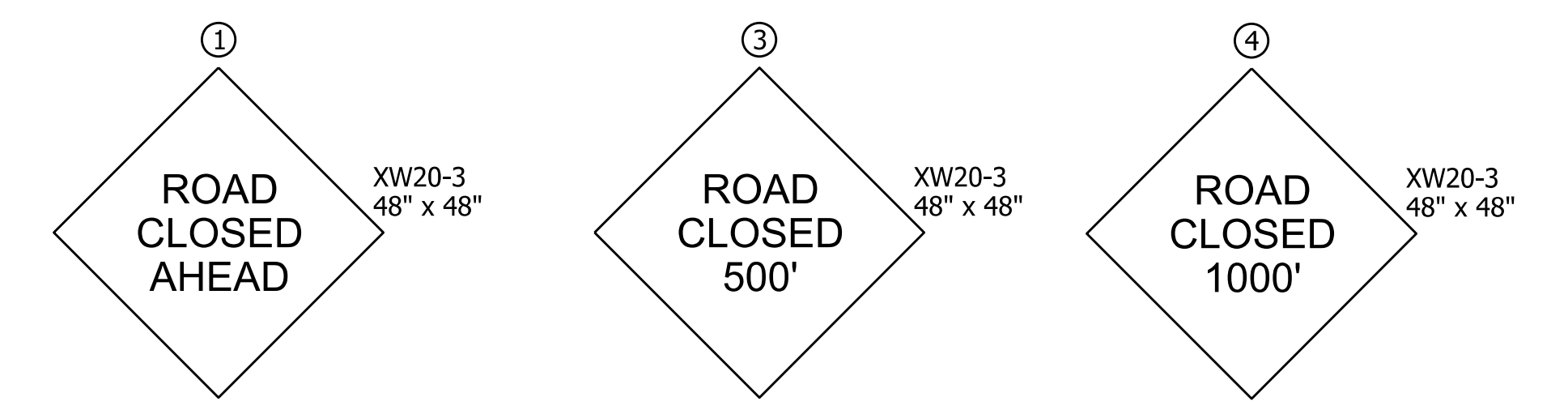
SCALE: Not to Scale

LEGEND

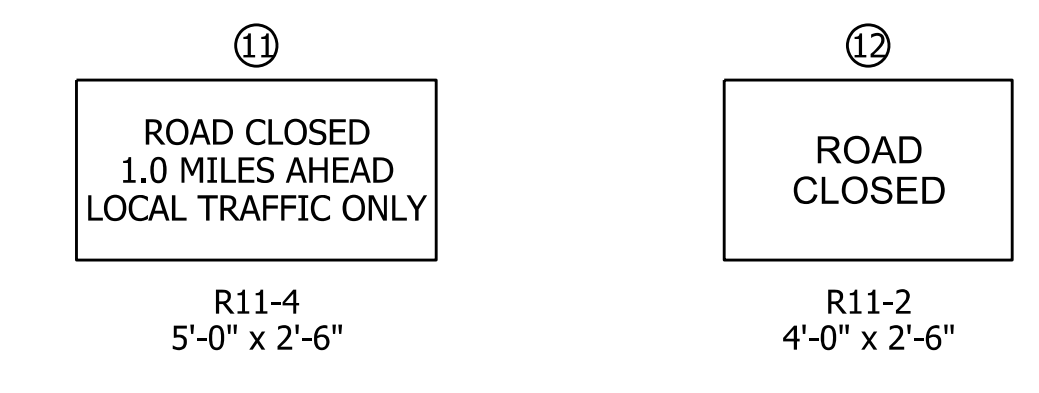
- Barricade
- ▭ Road Closure Sign Assembly
- ▭ Typical Construction Sign Standard



CONSTRUCTION SIGNS, TYPE "A"



ROAD CLOSURE SIGN ASSEMBLIES



Note to Reviewer:
 INDOT requested at PFC meeting to remove detour assemblies from the plans and show only Road Closed Ahead assemblies along Old Michigan Road. Plans were updated based on this discussion.

CONSTRUCTION SIGN SCHEDULE

ITEM	TOTALS
TYPE 'A' SIGN	
XW20-3	3 EACH
R11-2	1 EACH
R11-4	1 EACH
TOTAL TYPE 'A' SIGN	5 EACH
TYPE 'B' SIGN	
TOTAL TYPE 'B' SIGN	0 EACH
ROAD CLOSURE SIGN ASSEMBLY	
TYPE III-A BARRICADE	24 LFT
TYPE III-B BARRICADE	24 LFT
DETOUR ROUTE MARKER ASSEMBLY	0 EACH

GENERAL NOTES

1. Exact sign locations to be field determined.
2. Contractor to erect and maintain all signs and barricades.
3. Access to all properties shall be maintained by the contractor at all times.
4. Type B construction warning lights shall be used with all signs located at barricades.
5. Type A construction warning lights shall be used at all other construction signs.

X:\Projects\2022\263\208150_INDOT US 50_Sight\01_Const\Draws\CAD\Sheets\208150.mt1.0.dgn



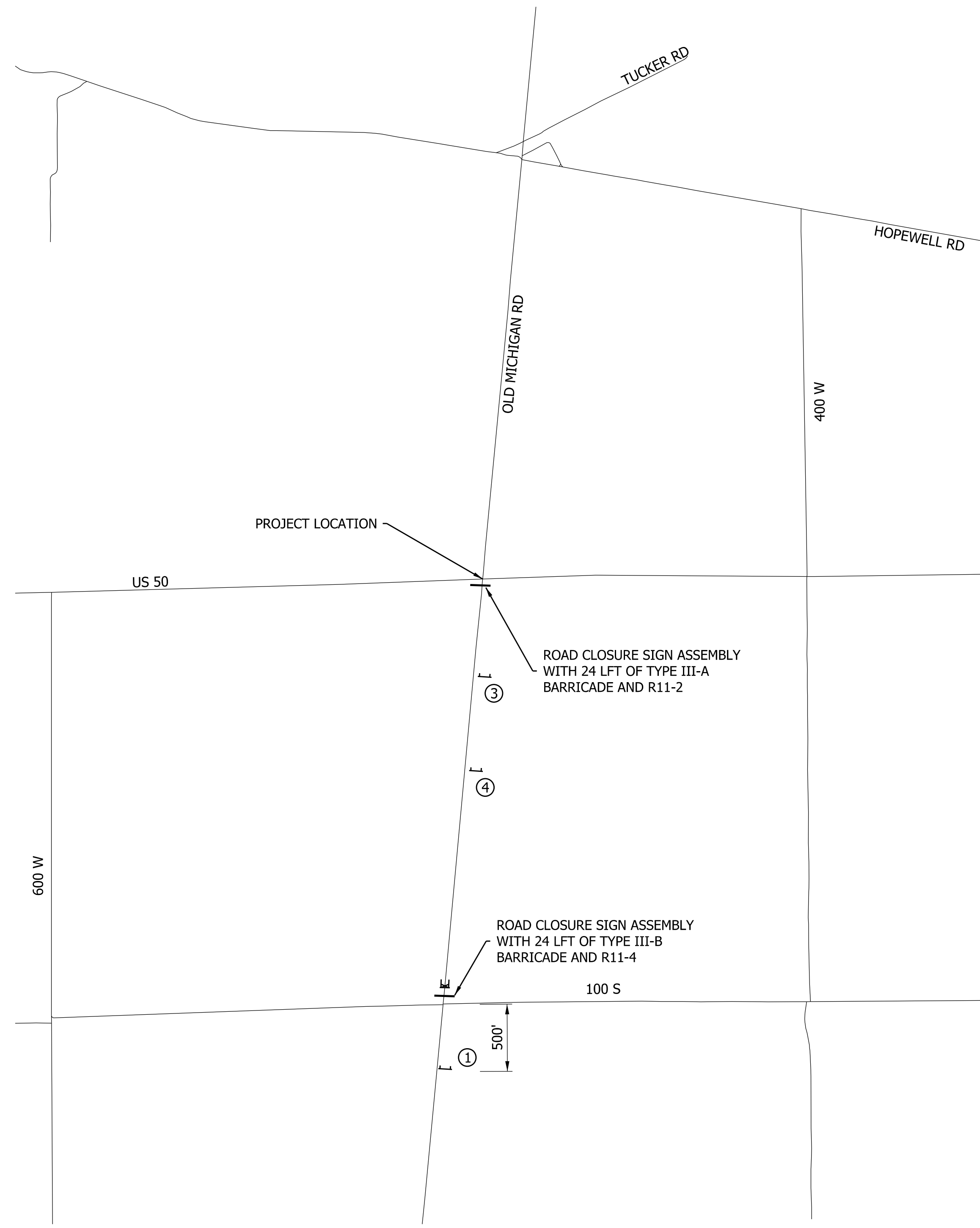
NOT FOR CONSTRUCTION
DLZ INDIANA, LLC

RECOMMENDED FOR APPROVAL	DESIGN ENGINEER	DATE
DESIGNED: AH	04/2024	DRAWN: DPH
CHECKED: FS	04/2024	CHECKED: FS

INDIANA DEPARTMENT OF TRANSPORTATION

MAINTENANCE OF TRAFFIC PHASE 1

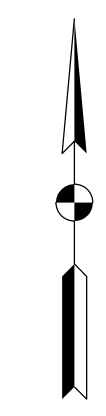
SCALE AS NOTED	IMPROVEMENT
	DESIGNATION
	2100026
SURVEY BOOK	SHEETS
ELECTRONIC	5 of 19
CONTRACT	PROJECT
R-43755	2100026



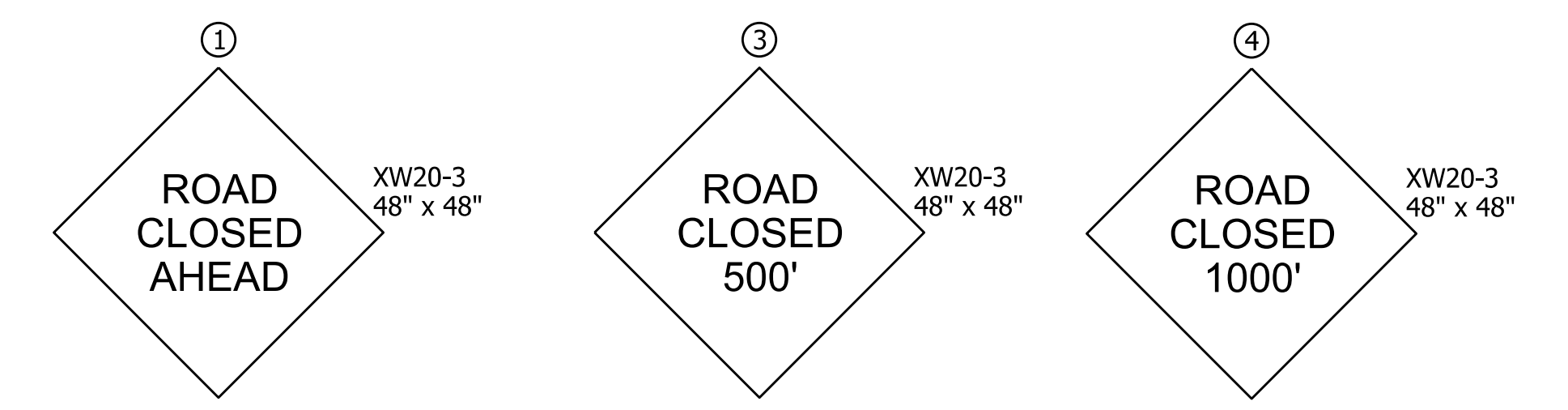
ROAD CLOSURE - SIGNS AND MARKERS
SCALE: Not to Scale

LEGEND

- Barricade
- ▭ Road Closure Sign Assembly
- ▭ Typical Construction Sign Standard



CONSTRUCTION SIGNS, TYPE "A"



ROAD CLOSURE SIGN ASSEMBLIES



Note to Reviewer:
INDOT requested at PFC meeting to remove detour assemblies from the plans and show only Road Closed Ahead assemblies along Old Michigan Road. Plans were updated based on this discussion.

CONSTRUCTION SIGN SCHEDULE

ITEM	TOTALS
TYPE 'A' SIGN	
XW20-3	3 EACH
R11-2	1 EACH
R11-4	1 EACH
TOTAL TYPE 'A' SIGN	5 EACH
TYPE 'B' SIGN	
TOTAL TYPE 'B' SIGN	0 EACH
ROAD CLOSURE SIGN ASSEMBLY	
TYPE III-A BARRICADE	24 LFT
TYPE III-B BARRICADE	24 LFT
DETOUR ROUTE MARKER ASSEMBLY	0 EACH

* Signs and barricades from Phase 1 can be reused in Phase 2.

GENERAL NOTES

1. Exact sign locations to be field determined.
2. Contractor to erect and maintain all signs and barricades.
3. Access to all properties shall be maintained by the contractor at all times.
4. Type B construction warning lights shall be used with all signs located at barricades.
5. Type A construction warning lights shall be used at all other construction signs.

X:\Projects\2022\263\208150_Indot US 50_Sight\01_Const\Drawings\CAD\Sheets\208150.mxd

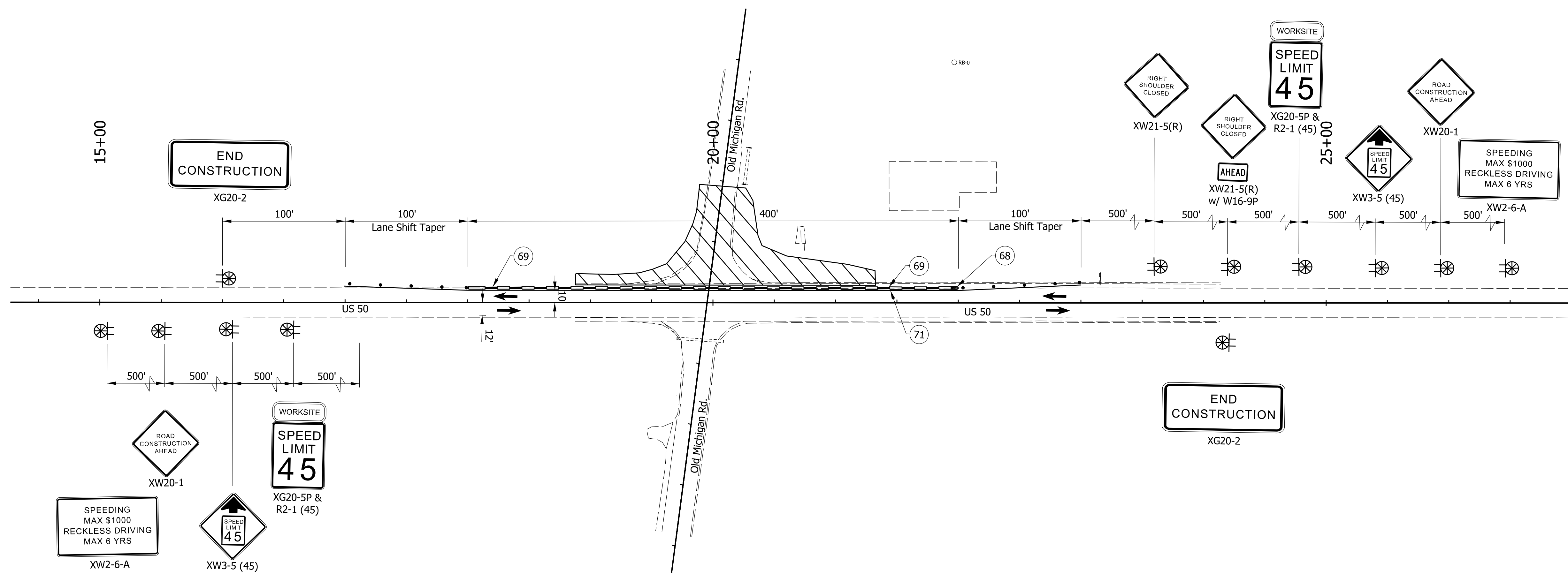


NOT FOR CONSTRUCTION
DLZ INDIANA, LLC

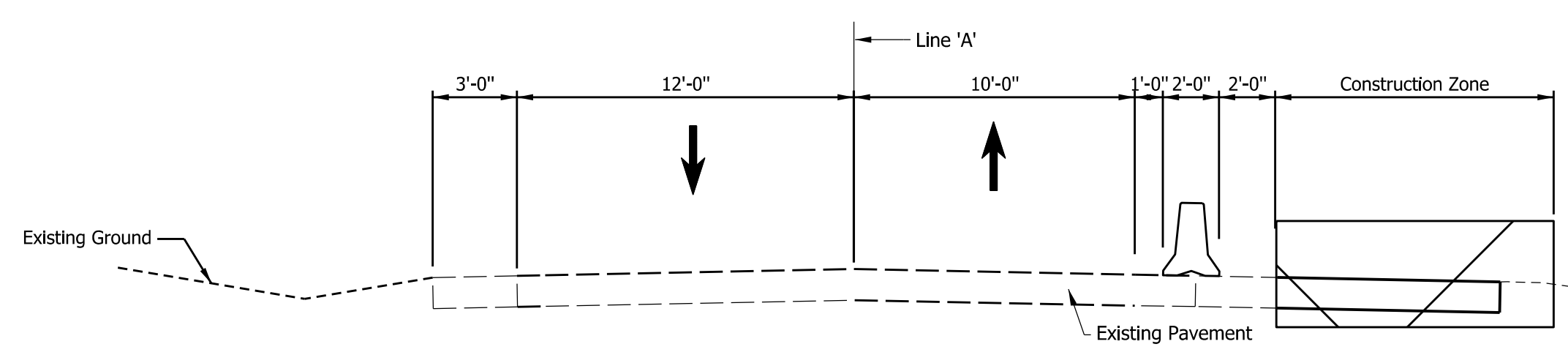
RECOMMENDED FOR APPROVAL	DESIGN ENGINEER	DATE
DESIGNED: AH	04/2024	DRAWN: DPH
CHECKED: FS	04/2024	CHECKED: FS

INDIANA DEPARTMENT OF TRANSPORTATION
MAINTENANCE OF TRAFFIC PHASE 2

SCALE AS NOTED	IMPROVEMENT
	DESIGNATION
	2100026
SURVEY BOOK	SHEETS
ELECTRONIC	6 of 19
CONTRACT	PROJECT
R-43755	2100026



CONSTRUCTION SIGN SCHEDULE	
ITEM	TOTALS
TYPE 'A' SIGN	
XW2-6-A	2 EACH
XW3-5	2 EACH
XW20-1	2 EACH
XW21-5(R)	2 EACH
XG20-2	2 EACH
TOTAL TYPE 'A' SIGN	10 EACH
TYPE 'B' SIGN	
R2-1	2 EACH
XG20-5P	2 EACH
W16-9P	1 EACH
TOTAL TYPE 'B' SIGN	5 EACH
DETOUR ROUTE MARKER ASSEMBLY	0 EACH
ROAD CLOSURE SIGN ASSEMBLY	0 EACH
TYPE III-A BARRICADE	0 LFT
TYPE III-B BARRICADE	0 LFT



SIGN LEGEND		
SIGN	DESCRIPTION	SIZE (in x in)
R2-1	"SPEED LIMIT" (45 MPH)	24 X 30
W16-9P	"AHEAD" SIGN	24 X 12
XW2-6-A	"WORKSITE ADDED PENALTY" SIGN	78 X 42
XW3-5	"REDUCED SPEED LIMIT AHEAD" SIGN	36 X 36
XW20-1	"ROAD CONSTRUCTION AHEAD" SIGN	36 X 36
XW21-5(R)	"SHOULDER CLOSED" SIGN	36 X 36
XG20-2	"END ROAD WORK" SIGN	48 X 18
XG20-5P	"WORKSITE" SIGN	24 X 18

- NOTES**
- All signs, barricades, and pavement markings shall conform to the Indiana Manual on Traffic Control Devices for Streets and Highways, 2011 and any current supplements thereto.
 - Contractor shall maintain access to all commercial and private properties during construction.
 - Spacing of channelizing devices on tangents shall be 90' unless otherwise noted.
 - Spacing of channelizing devices on tapers shall be 45' unless otherwise noted.
 - Warning lights shall be installed on all channelizing devices.
 - One week prior to all traffic pattern changes, Contractor shall notify local fire department, police, and ambulance services of work schedule and temporary traffic layouts.

- LEGEND:**
- (68) Energy Absorbing Terminal, CZ, TL-3
 - (69) Temporary Traffic Barrier, Type 2
 - (71) Temp. Pavement Marking, Removable, Solid, White, 4in
 - [Hatched Area] Area Under Construction
 - [Light Symbol] Type 'A' Construction Warning Light
 - [Sign Symbol] Construction Sign
 - [Dot Symbol] Standard Drum
 - [Arrow Symbol] Direction of Traffic
 - [Barrier Symbol] Temporary Traffic Barrier, Type 2

Construction Zone Design Speed = 45 mph (US-50)

X:\Projects\2022\2263\208150_INDOT US 50_Sight\01_ConstrDocs\CAD\Sheets\208150.mxd

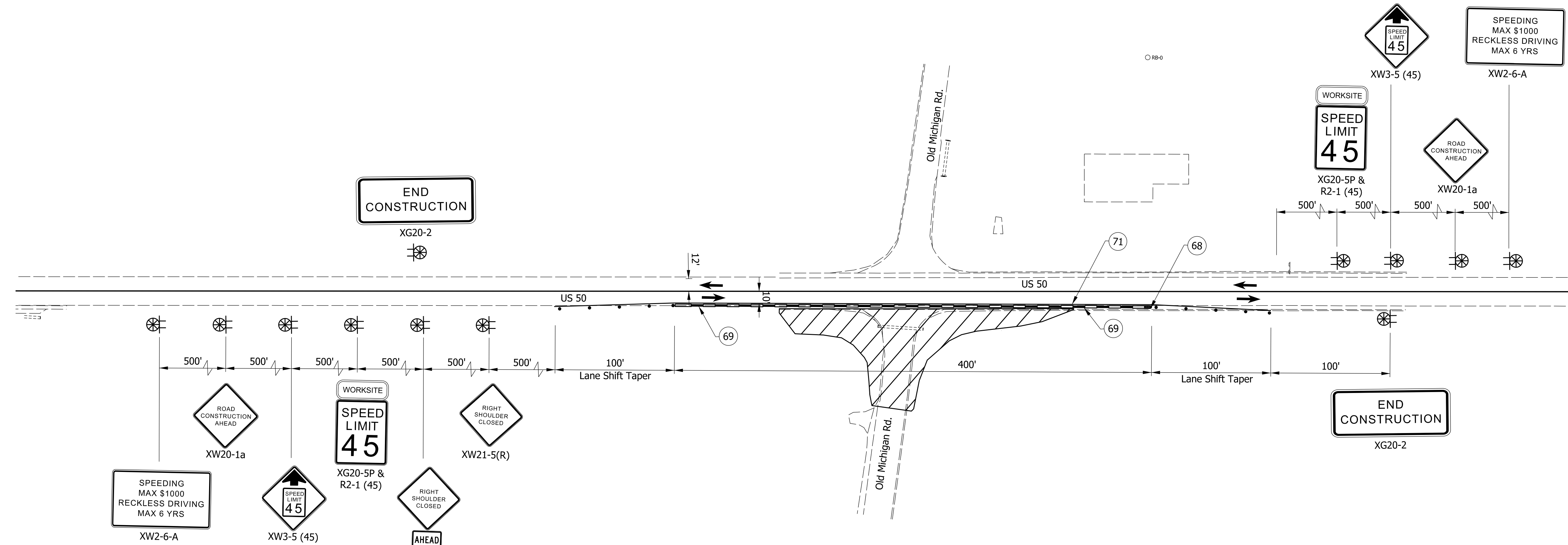
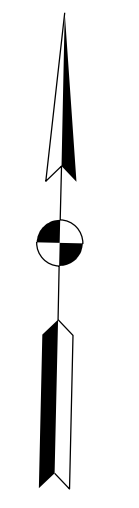


NOT FOR CONSTRUCTION
DLZ INDIANA, LLC

RECOMMENDED FOR APPROVAL	DESIGN ENGINEER	DATE
DESIGNED: AH	04/2024	DRAWN: DPH
CHECKED: FS	04/2024	CHECKED: FS

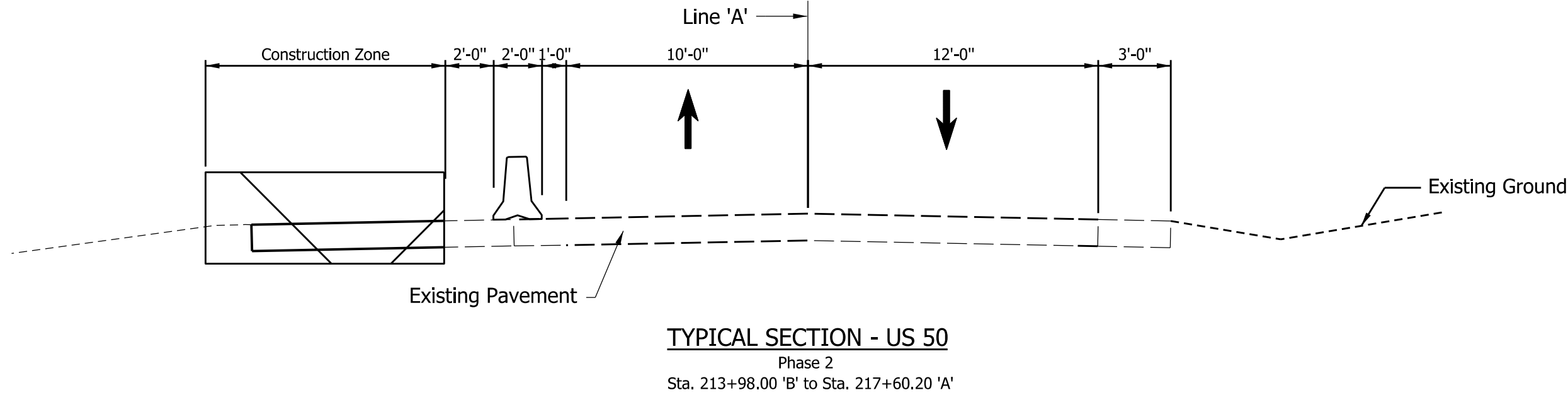
INDIANA DEPARTMENT OF TRANSPORTATION
MAINTENANCE OF TRAFFIC PHASE 1

SCALE	IMPROVEMENT
1"=50'	
	DESIGNATION
	2100026
SURVEY BOOK	SHEETS
ELECTRONIC	7 of 19
CONTRACT	PROJECT
R-43755	2100026



CONSTRUCTION SIGN SCHEDULE	
ITEM	TOTALS
TYPE 'A' SIGN	
XW2-6-A	2 EACH
XW3-5	2 EACH
XW20-1	2 EACH
XW21-5(R)	2 EACH
XG20-2	2 EACH
TOTAL TYPE 'A' SIGN	10 EACH
TYPE 'B' SIGN	
R2-1	2 EACH
XG20-5P	2 EACH
W16-9P	1 EACH
TOTAL TYPE 'B' SIGN	5 EACH
DETOUR ROUTE MARKER ASSEMBLY	0 EACH
ROAD CLOSURE SIGN ASSEMBLY	0 EACH
TYPE III-A BARRICADE	0 LFT
TYPE III-B BARRICADE	0 LFT

SIGN LEGEND		
SIGN	DESCRIPTION	SIZE (in x in)
R2-1	"SPEED LIMIT" (45 MPH)	24 X 30
W16-9P	"AHEAD" SIGN	24 X 12
XW2-6-A	"WORKSITE ADDED PENALTY" SIGN	78 X 42
XW3-5	"REDUCED SPEED LIMIT AHEAD" SIGN	36 X 36
XW20-1	"ROAD CONSTRUCTION AHEAD" SIGN	36 X 36
XW21-5(R)	"SHOULDER CLOSED" SIGN	36 X 36
XG20-2	"END ROAD WORK" SIGN	48 X 18
XG20-5P	"WORKSITE" SIGN	24 X 18



- NOTES**
- All signs, barricades, and pavement markings shall conform to the Indiana Manual on Traffic Control Devices for Streets and Highways, 2011 and any current supplements thereto.
 - Contractor shall maintain access to all commercial and private properties during construction.
 - Spacing of channelizing devices on tangents shall be 90' unless otherwise noted.
 - Spacing of channelizing devices on tapers shall be 45' unless otherwise noted.
 - Warning lights shall be installed on all channelizing devices.
 - One week prior to all traffic pattern changes, Contractor shall notify local fire department, police, and ambulance services of work schedule and temporary traffic layouts.

- LEGEND:**
- (68) Energy Absorbing Terminal, CZ, TL-3
 - (69) Temporary Traffic Barrier, Type 2
 - (71) Temp. Pavement Marking, Removable, Solid, White, 4in
 - Area Under Construction
 - Type 'A' Construction Warning Light
 - Construction Sign
 - Standard Drum
 - Direction of Traffic
 - Temporary Traffic Barrier, Type 2

Construction Zone Design Speed = 45 mph (US-50)

X:\Projects\2022\2263\208150_INDOT US 50_Sight\01_ConstDocs\CAD\Sheets\2081.mxd.dgn

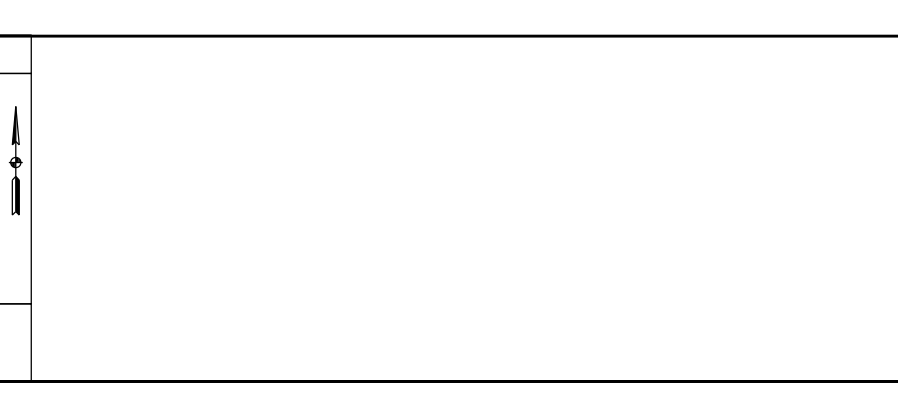
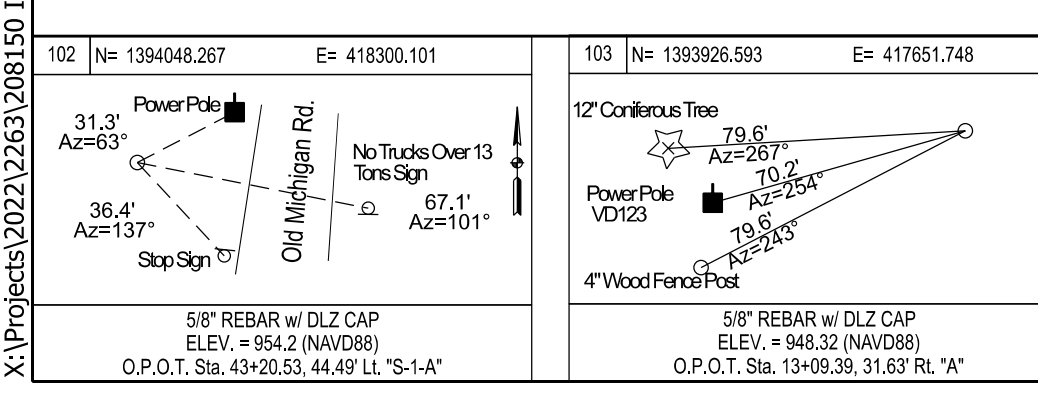
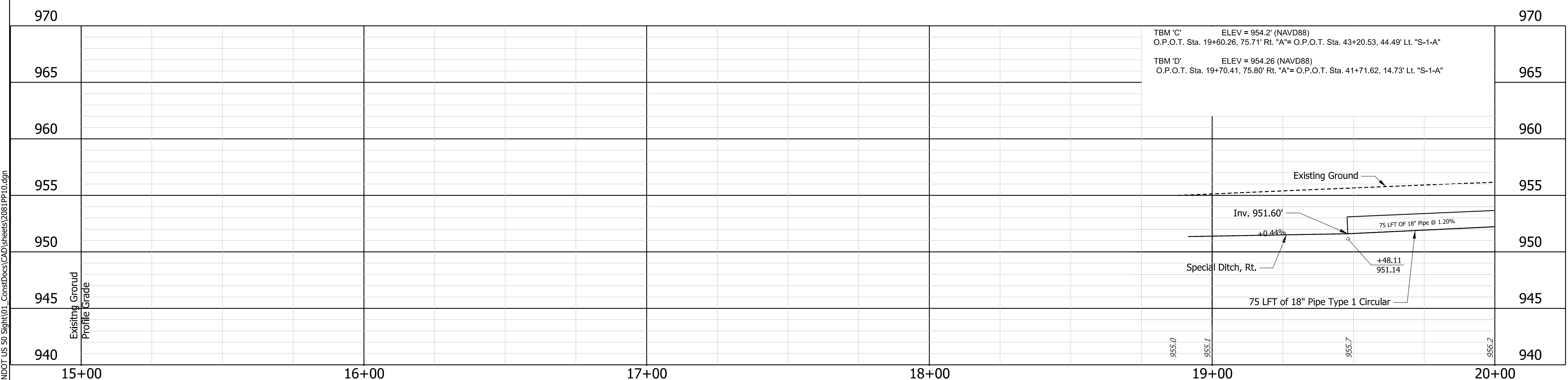


NOT FOR CONSTRUCTION
DLZ INDIANA, LLC

RECOMMENDED FOR APPROVAL	DESIGN ENGINEER	DATE
DESIGNED: AH	04/2024	DRAWN: DPH
CHECKED: FS	04/2024	CHECKED: FS

INDIANA DEPARTMENT OF TRANSPORTATION
MAINTENANCE OF TRAFFIC PHASE 2

SCALE	IMPROVEMENT
1"=50'	DESIGNATION
	2100026
SURVEY BOOK	SHEETS
ELECTRONIC	8 of 19
CONTRACT	PROJECT
R-43755	2100026



NOT FOR CONSTRUCTION
DLZ INDIANA, LLC

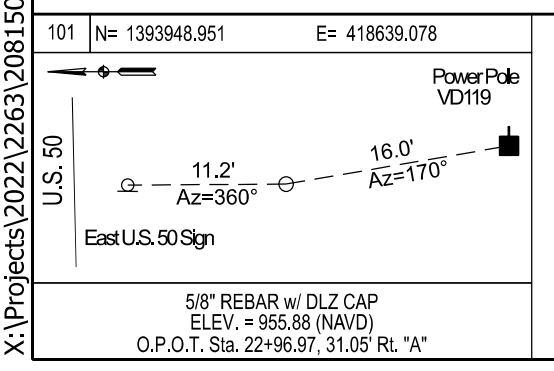
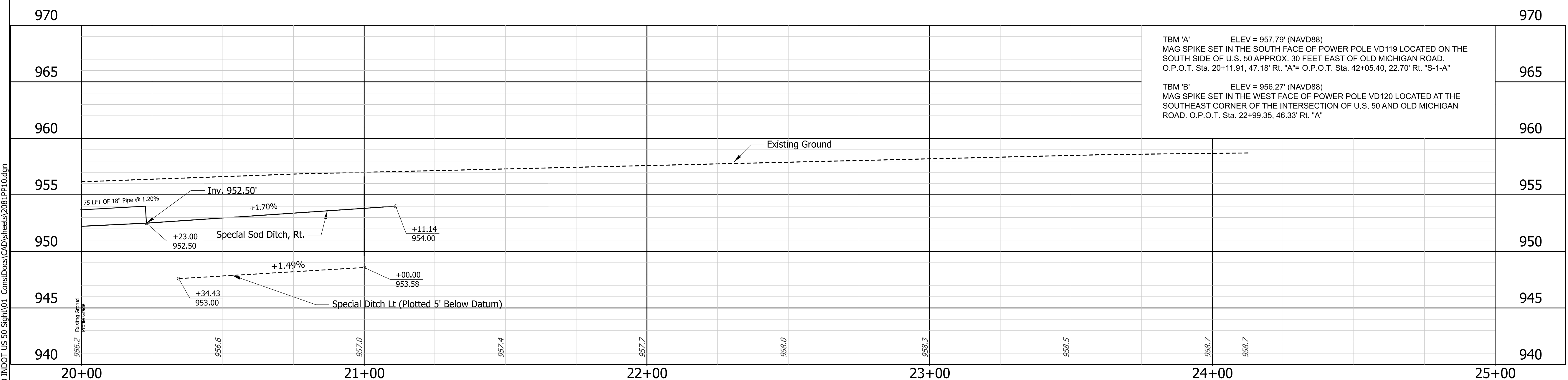
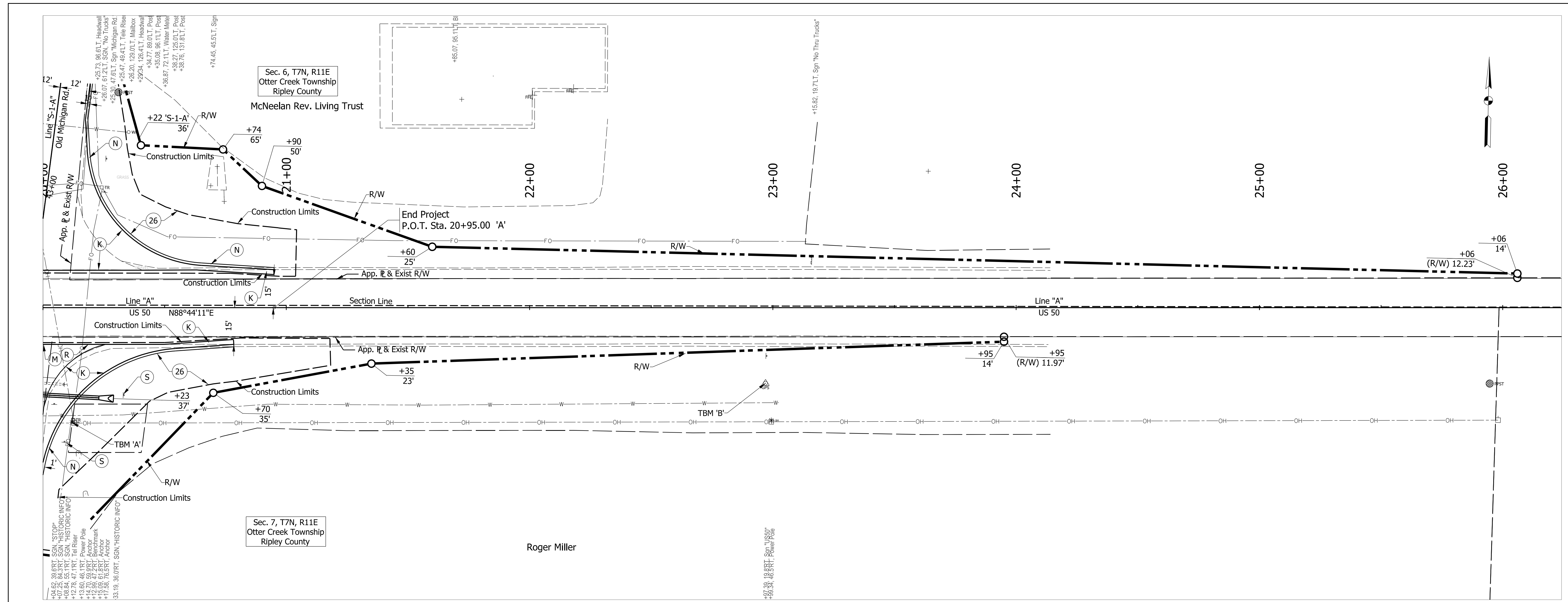
RECOMMENDED FOR APPROVAL	DESIGN ENGINEER	DATE
DESIGNED: AH	04/2024	DRAWN: DPH
CHECKED: FS	04/2024	CHECKED: FS

INDIANA DEPARTMENT OF TRANSPORTATION
PLAN AND PROFILE LINE "A"

HORIZONTAL SCALE	IMPROVEMENT
1"=20'	
VERTICAL SCALE	DESIGNATION
1"=5'	2100026
SURVEY BOOK	SHEETS
ELECTRONIC	9 of 19
CONTRACT	PROJECT
R-43755	2100026

- LEGEND:**
- (K) 165 lbs/syd QC/QA-HMA 2, 58S, Surface 9.5 mm on HMA for Approaches, Type B (Consisting of: 385 lbs/syd HMA Intermediate, Type B, on 385 lbs/syd HMA Base, Type B), on 3" Compacted Aggregate, No. 53, on Subgrade Treatment IC
 - (M) Milling, Asphalt, 1.5 IN.
 - (N) 12 IN. Depth Compacted Aggregate No. 53
 - (R) 165 lbs/syd QC/QA-HMA 2, 58S, Surface 9.5 mm
 - (S) Sign, Relocate Historic Marker Sign to R/W Line
 - (11) Sawcut
 - (26) Mulched Seeding R
 - (29) Remove
 - (70) Protect
- Notes:**
- All R/W and existing topography described from Line "A", Unless noted otherwise.

X:\Projects\2022\2263\2081\INDOT US 50_Sight\01_Constr\Drawings\2081\PP10.dgn



INDIANA DEPARTMENT OF TRANSPORTATION
DLZ
 NOT FOR CONSTRUCTION
 DLZ INDIANA, LLC

RECOMMENDED FOR APPROVAL	DESIGN ENGINEER	DATE
DESIGNED: AH	04/2024	DRAWN: DPH
CHECKED: FS	04/2024	CHECKED: FS

INDIANA DEPARTMENT OF TRANSPORTATION	
PLAN AND PROFILE LINE "A"	

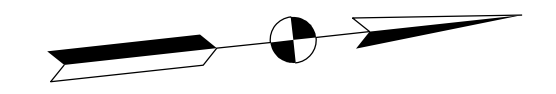
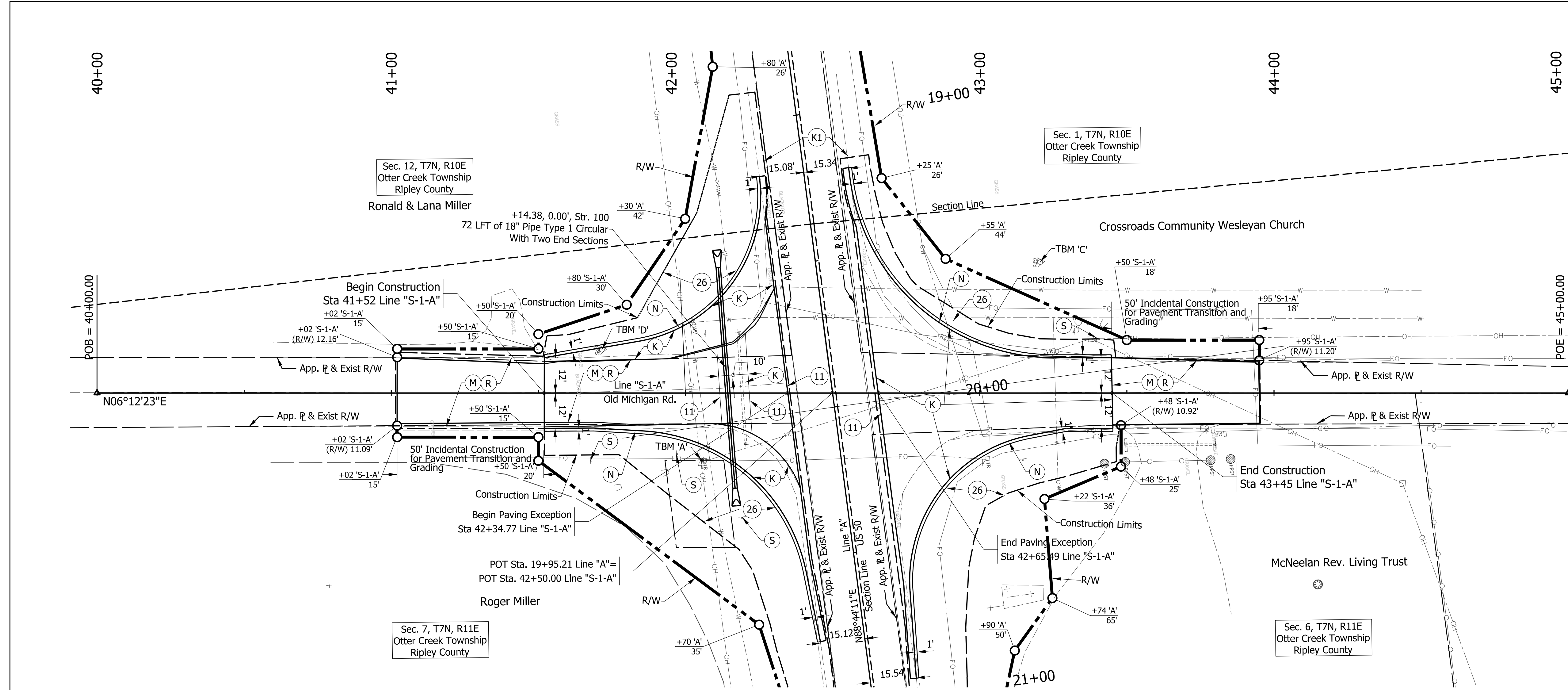
- LEGEND:**
- (K) 165 lbs/syd QC/QA-HMA 2, 58S, Surface 9.5 mm on HMA for Approaches, Type B (Consisting of: 385 lbs/syd HMA Intermediate, Type B, on 385 lbs/syd HMA Base, Type B), on 3" Compacted Aggregate, No. 53, on Subgrade Treatment IC
 - (M) Milling, Asphalt, 1.5 IN.
 - (N) 12 IN. Depth Compacted Aggregate No. 53
 - (R) 165 lbs/syd QC/QA-HMA 2, 58S, Surface 9.5 mm
 - (S) Sign, Relocate Historic Marker Sign to R/W Line
 - (11) Sawcut
 - (26) Mulched Seeding R
 - (70) Protect

Notes:

- All R/W and existing topography described from Line "A", Unless noted otherwise.

HORIZONTAL SCALE	IMPROVEMENT
1"=20'	
VERTICAL SCALE	DESIGNATION
1"=5'	2100026
SURVEY BOOK	SHEETS
ELECTRONIC	10 of 19
CONTRACT	PROJECT
R-43755	2100026

X:\Projects\2022\263\2081\INDOT US 50 Sight\01_Constr\Drawings\CAD\Sheets\2081_P10.dgn

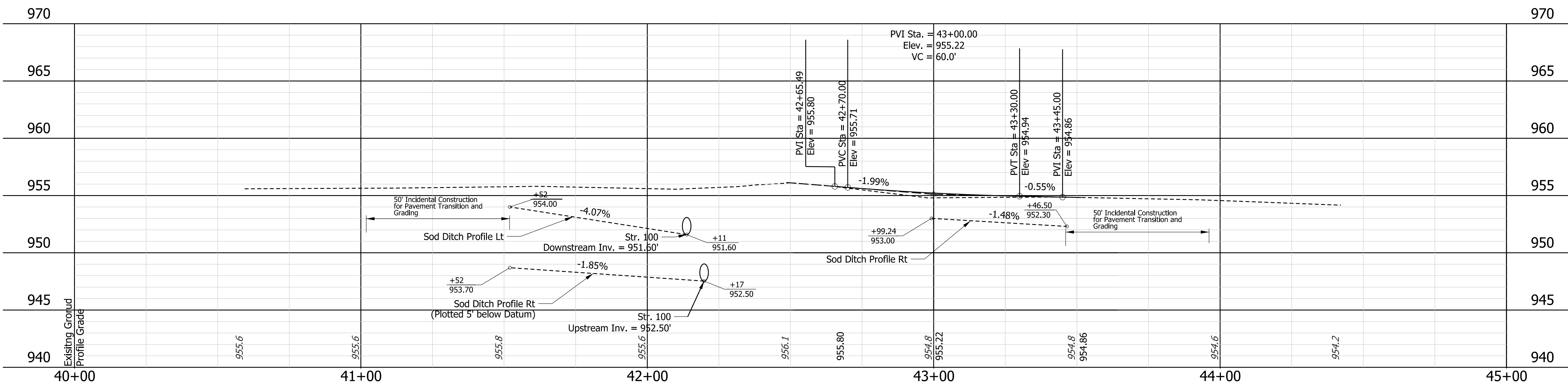


LEGEND:

- (K) 165 lbs/syd QC/QA-HMA 2, 58S, Surface 9.5 mm on HMA for Approaches, Type B (Consisting of: 385 lbs/syd HMA Intermediate, Type B, on 385 lbs/syd HMA Base, Type B), on 3" Compacted Aggregate, No. 53, on Subgrade Treatment IC
- (M) Milling, Asphalt, 1.5 IN.
- (N) 12 IN. Depth Compacted Aggregate No. 53
- (R) 165 lbs/syd QC/QA-HMA 2, 58S, Surface 9.5 mm
- (S) Sign, Relocate Historic Marker Sign to R/W Line
- (11) Sawcut
- (26) Mulched Seeding R
- (70) Protect

Notes:

1. All R/W and existing topography described from Line "S-1-A", Unless noted otherwise.
2. See Line "A" sheets for topo survey callouts.



X:\Projects\2022\2263\208150_INDOT US 50_Sight\01_Const\Drawings\CAD\Sheets\2081PP20.dgn

100	No 1303897.01	E= 418313.589
102	No 1394048.267	E= 418300.101

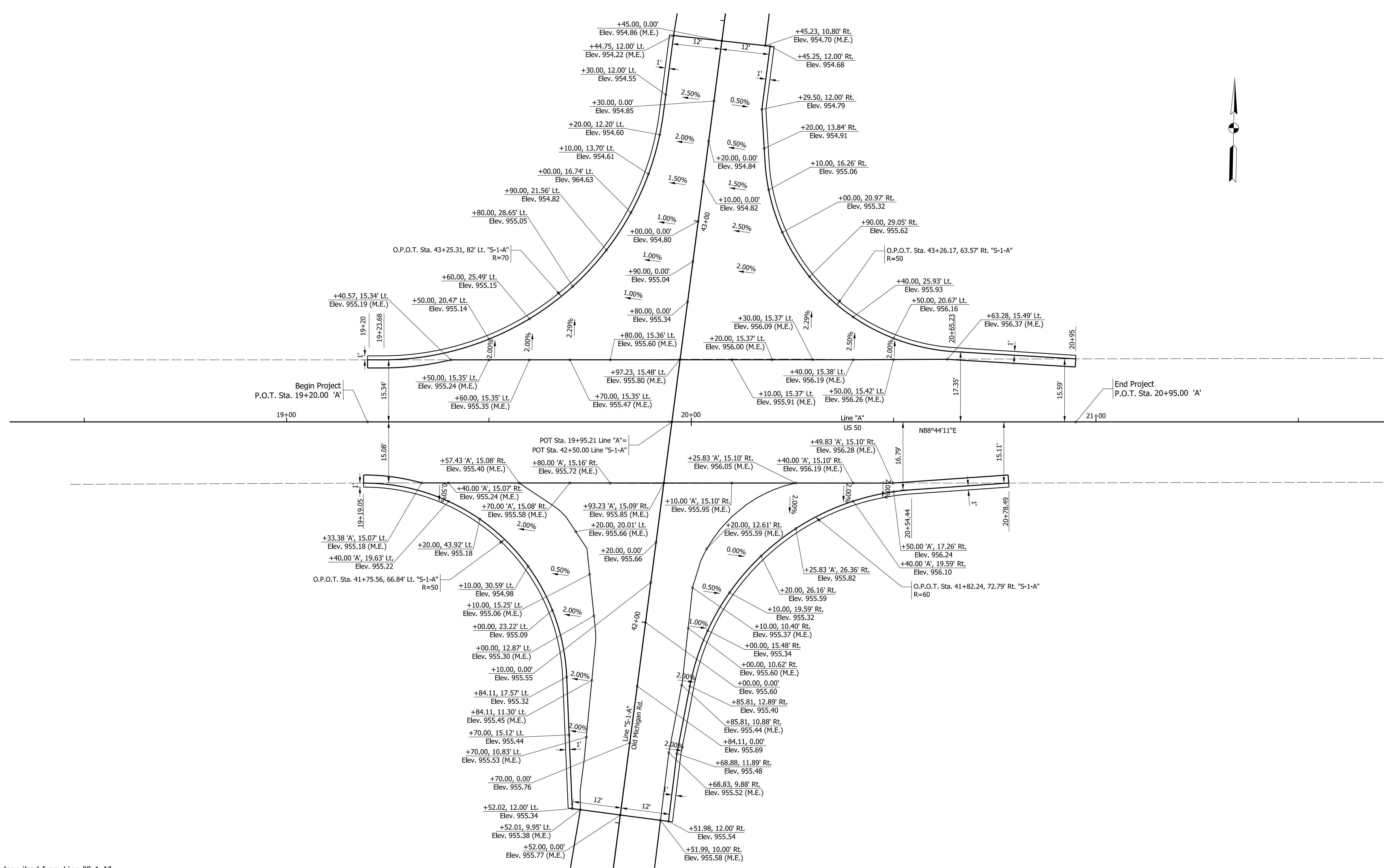
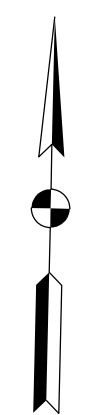


NOT FOR CONSTRUCTION
DLZ INDIANA, LLC

RECOMMENDED FOR APPROVAL	DESIGN ENGINEER	DATE
DESIGNED: AH	04/2024	DRAWN: DPH
CHECKED: FS	04/2024	CHECKED: FS

INDIANA DEPARTMENT OF TRANSPORTATION
PLAN AND PROFILE LINE "S-1-A"

HORIZONTAL SCALE	IMPROVEMENT
1"=20'	
VERTICAL SCALE	DESIGNATION
1"=5'	2100026
SURVEY BOOK	SHEETS
ELECTRONIC	11 of 19
CONTRACT	PROJECT
R-43755	2100026



- Notes:**
1. All Spot Elevations described from Line "S-1-A" Unless Noted Otherwise.
 2. M.E. = Match Existing

X:\Projects\2022\2263\208150_INDOT US 50_Sight\01_Constr\Drawings\CAD\Sheets\2018DT10.dgn



NOT FOR CONSTRUCTION
DLZ INDIANA, LLC

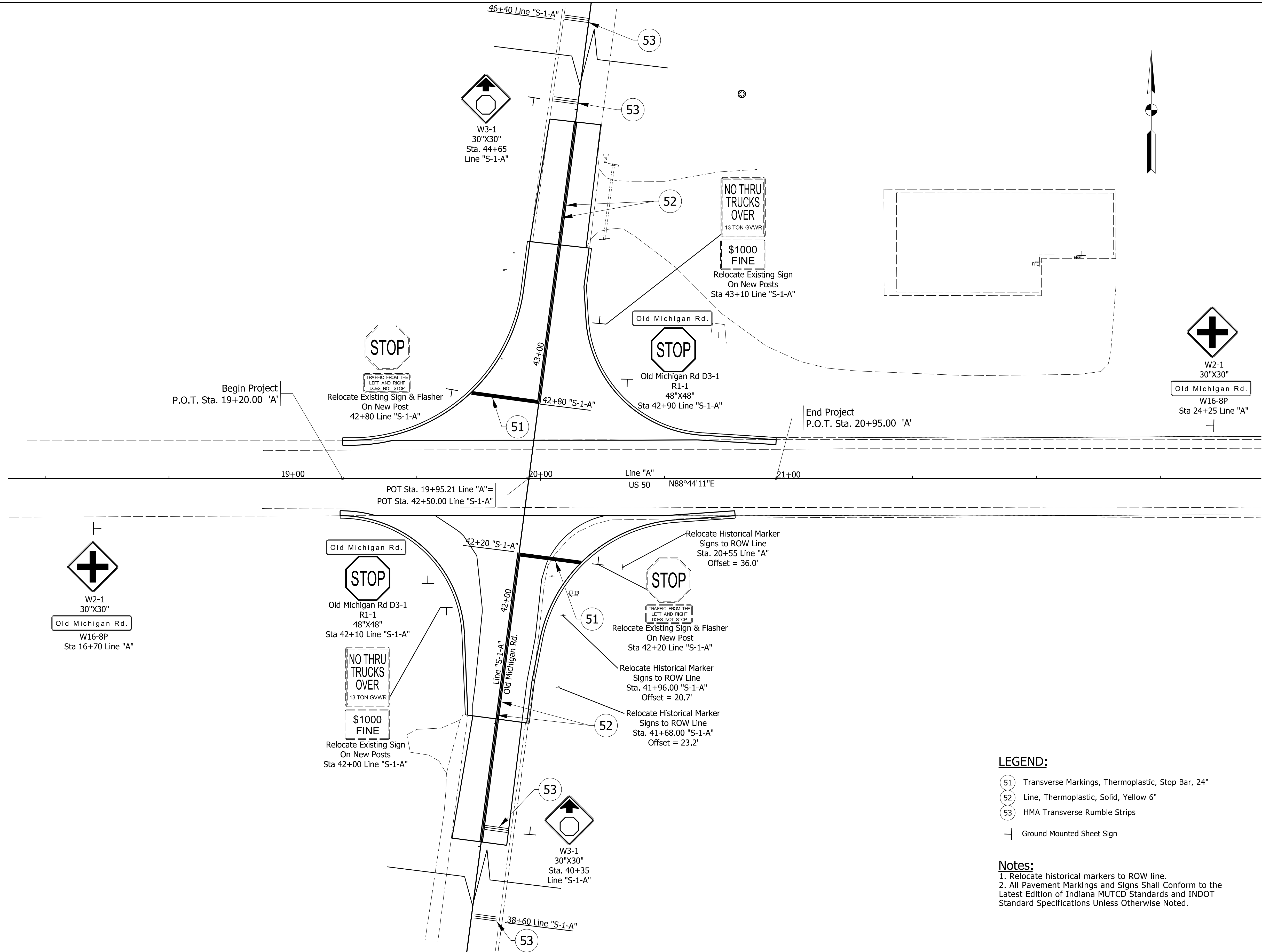
RECOMMENDED FOR APPROVAL	DESIGN ENGINEER	DATE
DESIGNED: AH	04/2024	DRAWN: DPH
CHECKED: FS	04/2024	CHECKED: FS

INDIANA
DEPARTMENT OF TRANSPORTATION

INTERSECTION DETAIL

SCALE	IMPROVEMENT
1"=15'	DESIGNATION
	2100026
SURVEY BOOK	SHEETS
ELECTRONIC	12 of 19
CONTRACT	PROJECT
R-43755	2100026

X:\Projects\2022\2263\208150_INDOT US 50_Sight\01_Constr\Drawings\CAD\Sheets\2018pm10.dgn



LEGEND:

- (51) Transverse Markings, Thermoplastic, Stop Bar, 24"
- (52) Line, Thermoplastic, Solid, Yellow 6"
- (53) HMA Transverse Rumble Strips
- Ground Mounted Sheet Sign

Notes:

1. Relocate historical markers to ROW line.
2. All Pavement Markings and Signs Shall Conform to the Latest Edition of Indiana MUTCD Standards and INDOT Standard Specifications Unless Otherwise Noted.



NOT FOR CONSTRUCTION
DLZ INDIANA, LLC

RECOMMENDED FOR APPROVAL	DESIGN ENGINEER	DATE
DESIGNED: AH	04/2024	DRAWN: DPH
CHECKED: FS	04/2024	CHECKED: FS

INDIANA DEPARTMENT OF TRANSPORTATION	
SIGNING AND PAVEMENT MARKING	

SCALE	IMPROVEMENT
1"=20'	
	DESIGNATION
	2100026
SURVEY BOOK	SHEETS
ELECTRONIC	13 of 19
CONTRACT	PROJECT
R-43755	2100026

PAVEMENT QUANTITIES AND APPROACH TABLE																									
LOCATION	DESCRIPTION (APPROACH TYPE OR CLASS)	WIDTH	LENGTH	RADIUS	DISTANCE BEYOND R/W LINE	MILLING, ASPHALT, 1.5 IN.	HMA FOR APPROACHES			HMA FOR ROADWAY PAVEMENT			ASPHALT FOR TACK COAT	JOINT ADHESIVE, SURFACE	JOINT ADHESIVE, INTERMEDIATE	LIQUID ASPHALT SEALANT	COMPACTED AGGREGATE NO. 53		COMP. AGG. SAFETY EDGE & SHOULDER, NO. 53		SUBGRADE TREATMENT, TYPE I	SUBGRADE TREATMENT, TYPE IC	SUBGRADE TREATMENT, TYPE II	GEOTEXTILE FOR PAVEMENT, TYPE 2B	REMARKS
							SURFACE TYPE B	INTERMEDIATE TYPE B	BASE TYPE B	QC/QA-HMA SURFACE	QC/QA-HMA INTERMEDIATE	QC/QA-HMA BASE					DEPTH		DEPTH						
							165#/SYD	385#/SYD	385#/SYD	2,585	2,585	2,585					3'	6'	Var.						
							TONS	TONS	TONS	TONS	TONS	TONS					CYS	CYS	TON	TON					
LINE "S-1-A" 41+02.00 to 43+95.00						528		125	125	93			1	619	513	619	52		39			825			
TOTAL						528		125	125	93			1	619	513	619	52		39			825			

STRUCTURE DATA																																					
STRUCTURE NUMBER	LOCATION					DESCRIPTION MANHOLE, INLET, CATCH BASIN, OR SPECIALTY STRUCTURE	LENGTH LFT	SKEW	FLOWLINE										STRUCTURE BACKFILL TYPE CYS	FLOWABLE BACKFILL TYPE CYS	REVETMENT RIP-RAP TON	CONCRETE CLASS A, FOR STR. EA	VIDEO INSPECTION LFT	PIPE END SECTION EA	GRATED BOX END SECTION		SAFETY METAL END SECTION		CONNECT TO STR.	NOTES/REMARKS							
	STATION	LEFT	RIGHT	CROSS	OFFSET				PIPE TYPE	COVER	UPSTREAM INVERT	DOWNSTREAM INVERT	TOP OF CASTING	SERVICE LIFE	SITE DESIGNATION	pH	BACKFILL METHOD	TYPE							CYS	TYPE	CYS	EA			LFT	EA	TYPE	SLOPE	EA	SLOPE	EA
	FT	IN	FT	ELEV.	ELEV.				ELEV.	YR																											
Line "A" 100	19+51	X				18	1	CMP PIPE	75		0.7	952.50	951.60	955.66	75	NA	7.0	1	1	16													outfall				

EARTHWORK SUMMARY TABLE		
Common Excavation		
LINE 'A' US 50 (Sta. 19+20.00 to 20+95.00)	133	CYS
LINE 'S-1-A' (Sta. 41+52.00 to 43+45.00)	200	CYS
Total Common Excavation	333	CYS
Fill		
LINE 'A' US 50 (Sta. 19+20.00 to 20+95.00)	51	CYS
LINE 'S-1-A' (Sta. 41+52.00 to 43+45.00)	56	CYS
Subtotal Fill	107	CYS
Subtotal + 25% Swell	134	CYS
Less Usable Common Excavation (Assumed 25% of Total Common Excavation)	83	CYS
Total Borrow Required	51	CYS

Note to Reviewer:
Remainder of tables to be provided
with Stage 3 submittal.

X:\Projects\2022\263\208150_INDOT US 50_Sight\01_Const\Drawings\CAD\Sheets\20811b10.dgn

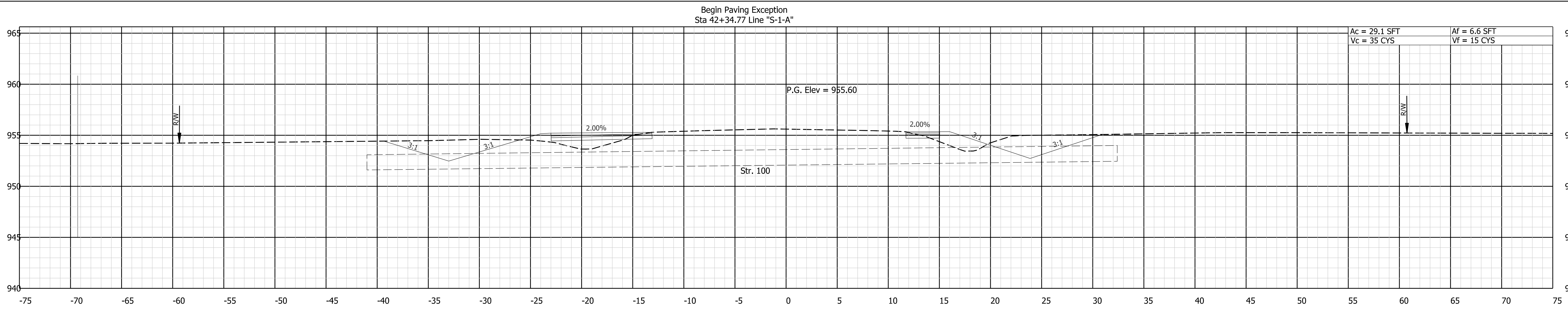


NOT FOR CONSTRUCTION
DLZ INDIANA, LLC

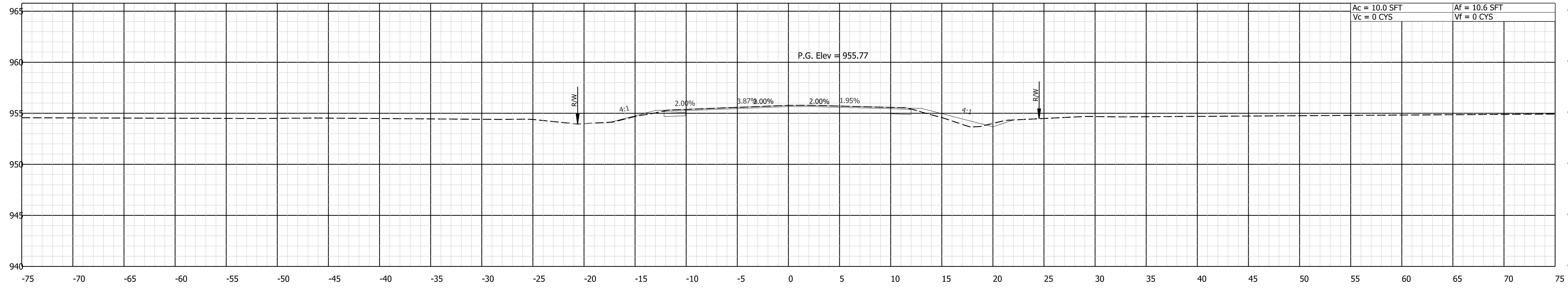
RECOMMENDED FOR APPROVAL	DESIGN ENGINEER	DATE
DESIGNED: AH	04/2024	DRAWN: DPH
CHECKED: FS	04/2024	CHECKED: FS

INDIANA DEPARTMENT OF TRANSPORTATION	
MISCELLANEOUS TABLES	

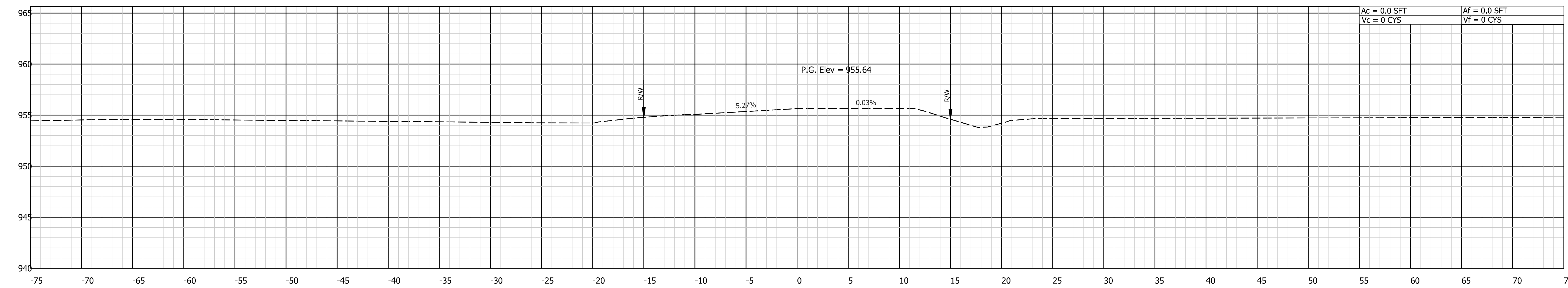
SCALE	IMPROVEMENT
	DESIGNATION
	2100026
SURVEY BOOK	SHEETS
ELECTRONIC	14 of 19
CONTRACT	PROJECT
R-43755	2100026



42+00.00



41+52.00



41+02.00

X:\Projects\2022\263\208150_INDOT US 50_Sight\01_Constr\Drawings\CAD\Sheets\208150_S10.dgn



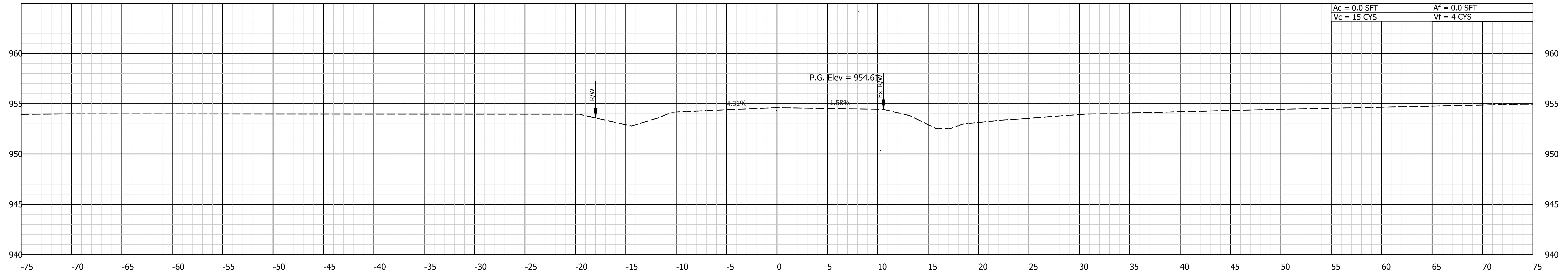
NOT FOR CONSTRUCTION
DLZ INDIANA, LLC

RECOMMENDED FOR APPROVAL	DESIGN ENGINEER	DATE
DESIGNED: AH	04/2024	DRAWN: DPH
		04/2024
CHECKED: FS	04/2024	CHECKED: FS
		04/2024

INDIANA DEPARTMENT OF TRANSPORTATION

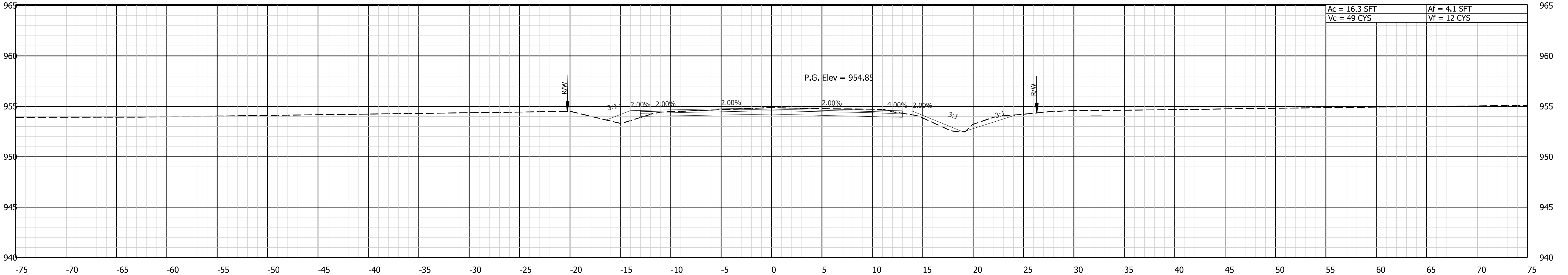
SCALE 1"=5'	IMPROVEMENT
	DESIGNATION 2100026
SURVEY BOOK ELECTRONIC	SHEETS 15 of 19
CONTRACT R-43755	PROJECT 2100026

End Incidental Construction
Sta 43+95 Line "S-1-A"



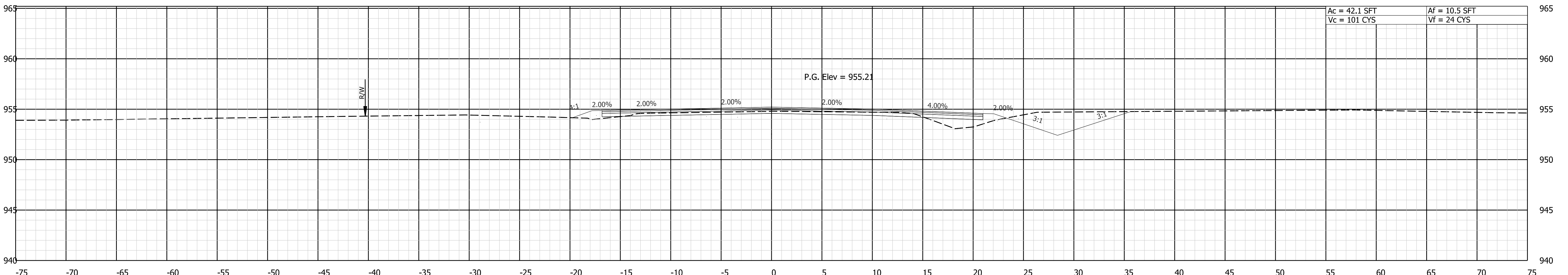
43+95.00

End Construction
Sta 43+45 Line "S-1-A"



43+45.00

End Paving Exception
Sta 42+65.49 Line "S-1-A"



43+00.00

X:\Projects\2022\263\208150_INDOT US 50_Sight\01_Constr\Drawings\CAD\Sheets\208150_S10.dgn

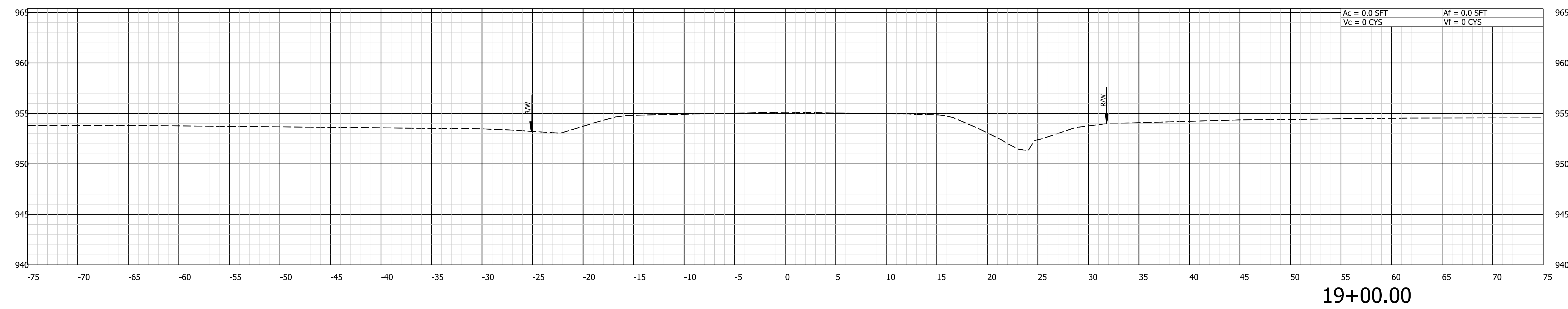
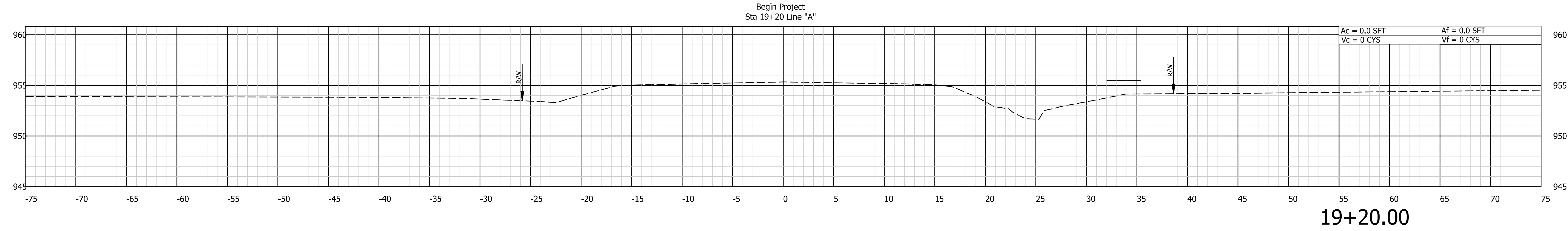
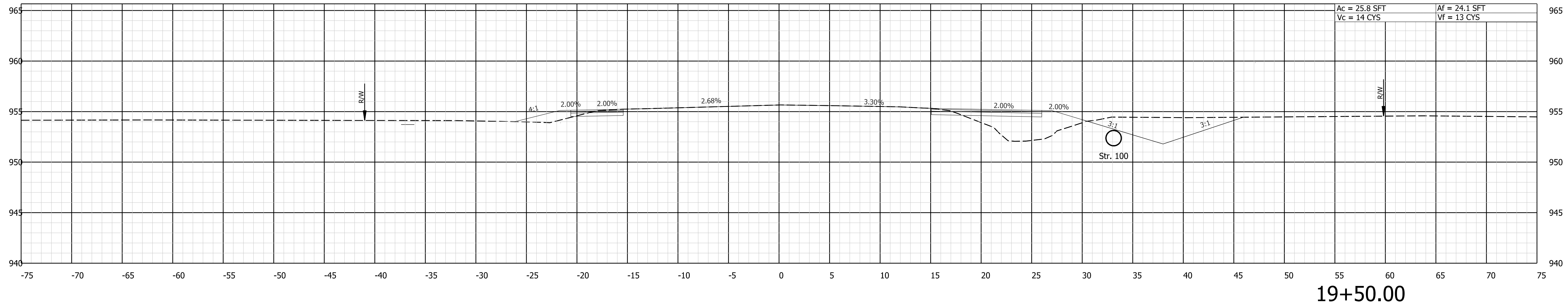


NOT FOR
CONSTRUCTION
DLZ INDIANA, LLC

RECOMMENDED FOR APPROVAL	DESIGN ENGINEER	DATE
DESIGNED: AH	04/2024	DRAWN: DPH
CHECKED: FS	04/2024	CHECKED: FS

INDIANA
DEPARTMENT OF TRANSPORTATION

SCALE	IMPROVEMENT
1"=5'	DESIGNATION
	2100026
SURVEY BOOK	SHEETS
ELECTRONIC	16 of 19
CONTRACT	PROJECT
R-43755	2100026



X:\Projects\2022\263\208150_INDOT US 50_Sight\01_Const\Draws\CAD\Sheets\2081\XS10.dgn

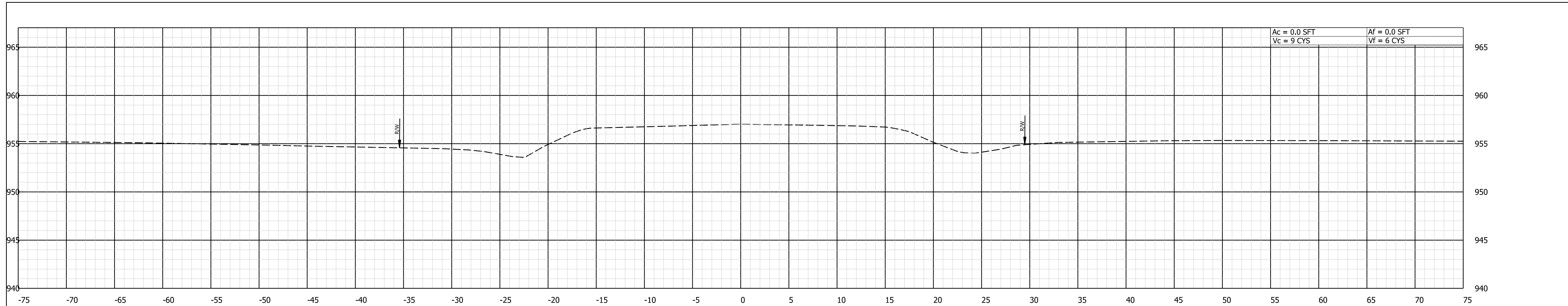


**NOT FOR
CONSTRUCTION**
DLZ INDIANA, LLC

RECOMMENDED FOR APPROVAL	DESIGN ENGINEER	DATE
DESIGNED: AH	04/2024	DRAWN: DPH
04/2024		04/2024
CHECKED: FS	04/2024	CHECKED: FS
		04/2024

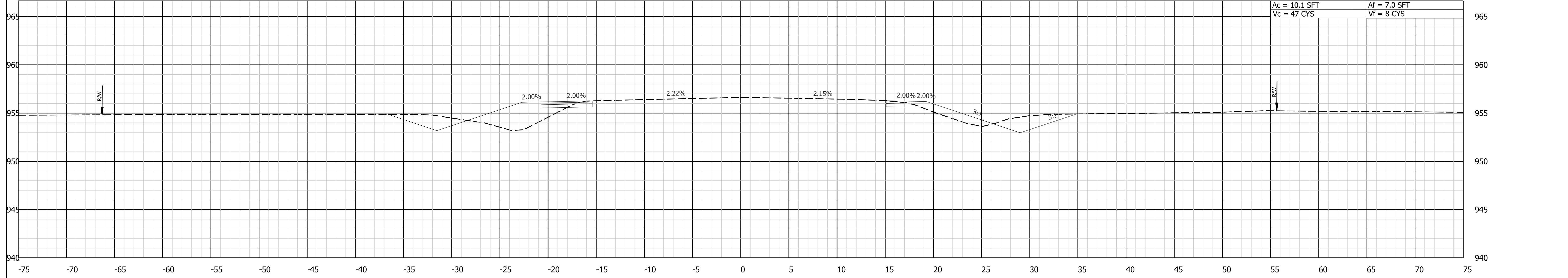
**INDIANA
DEPARTMENT OF TRANSPORTATION**

SCALE	IMPROVEMENT
	DESIGNATION
	2100026
SURVEY BOOK	SHEETS
ELECTRONIC	17 of 19
CONTRACT	PROJECT
R-43755	2100026

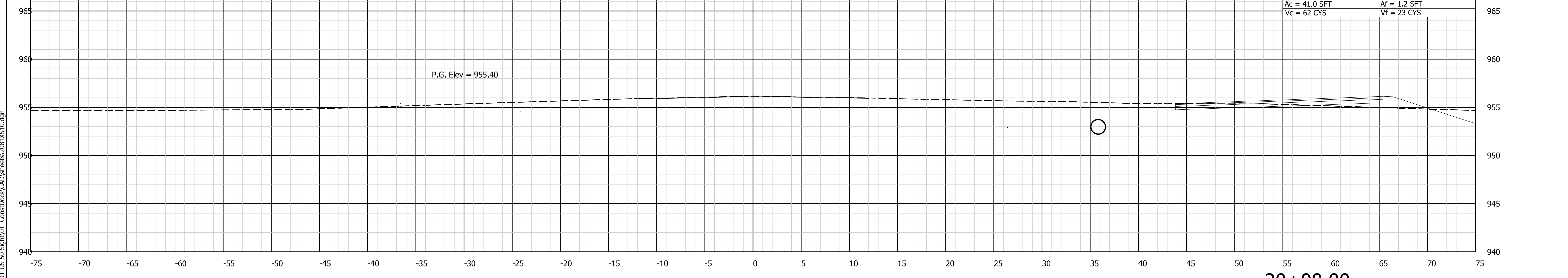


End Project
Sta 20+95 Line "A"

21+00.00



20+50.00



20+00.00

X:\Projects\2022\263\208150_INDOT US 50_Sight\01_Const\Drawings\CAD\Drawings\208150.dgn

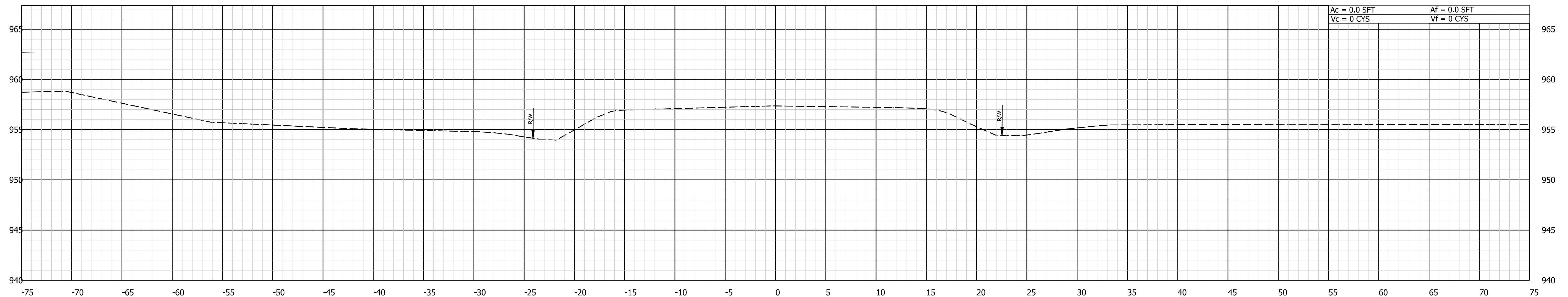


NOT FOR
CONSTRUCTION
DLZ INDIANA, LLC

RECOMMENDED FOR APPROVAL	DESIGN ENGINEER	DATE
DESIGNED: AH	04/2024	DRAWN: DPH
CHECKED: FS	04/2024	CHECKED: FS

INDIANA
DEPARTMENT OF TRANSPORTATION

SCALE	IMPROVEMENT
	DESIGNATION
	2100026
SURVEY BOOK	SHEETS
ELECTRONIC	18 of 19
CONTRACT	PROJECT
R-43755	2100026



21+50.00

X:\Projects\2022\263\208150_INDOT US 50_Sight\01_Const\Drawings\CAD\Sheets\208150.dgn



NOT FOR
CONSTRUCTION
DLZ INDIANA, LLC

RECOMMENDED FOR APPROVAL	DESIGN ENGINEER	DATE
DESIGNED: AH	04/2024	DRAWN: DPH
CHECKED: FS	04/2024	CHECKED: FS
	04/2024	

INDIANA
DEPARTMENT OF TRANSPORTATION

SCALE	IMPROVEMENT
	DESIGNATION
	2100026
SURVEY BOOK	SHEETS
ELECTRONIC	19 of 19
CONTRACT	PROJECT
R-43755	2100026