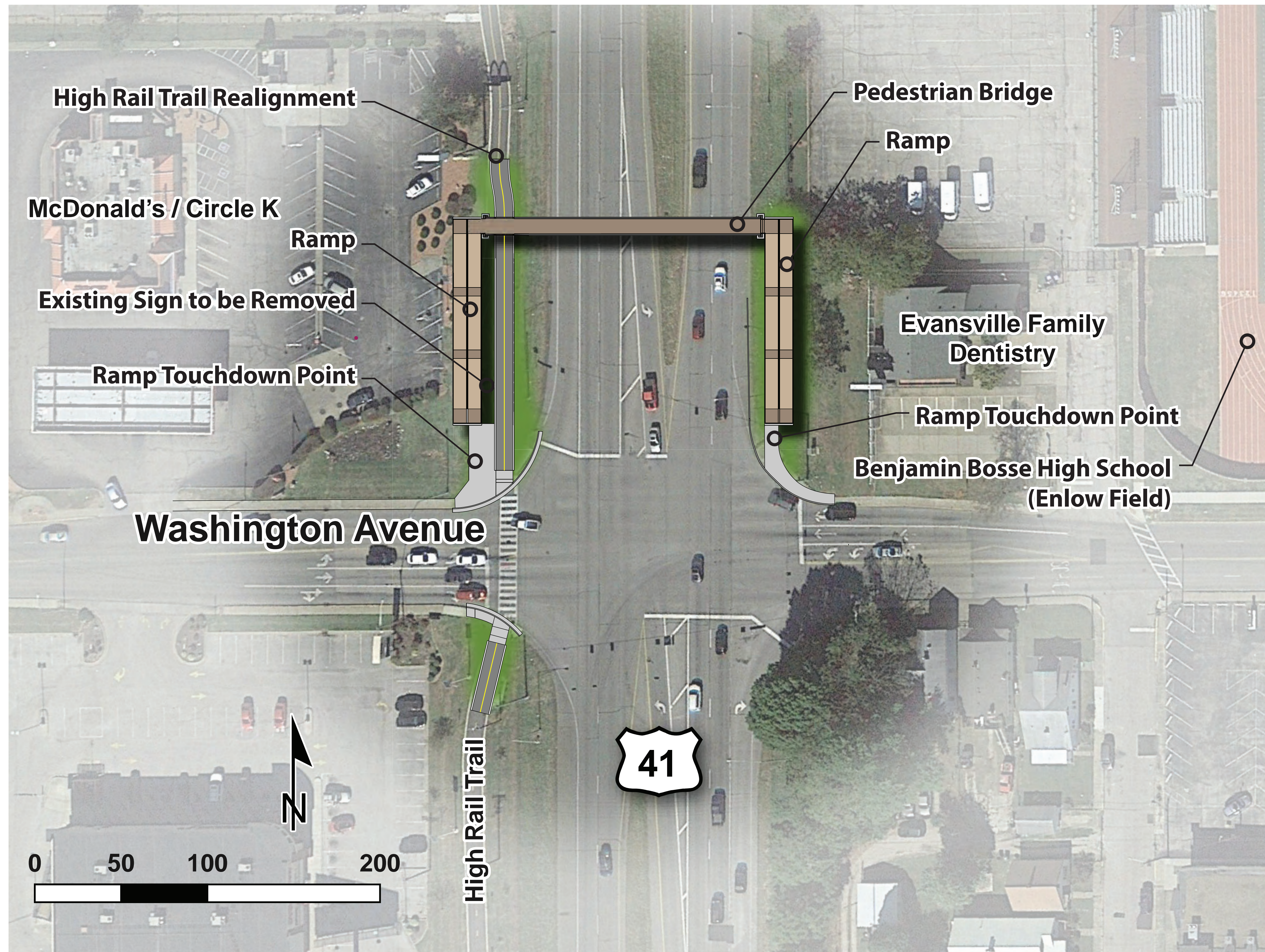


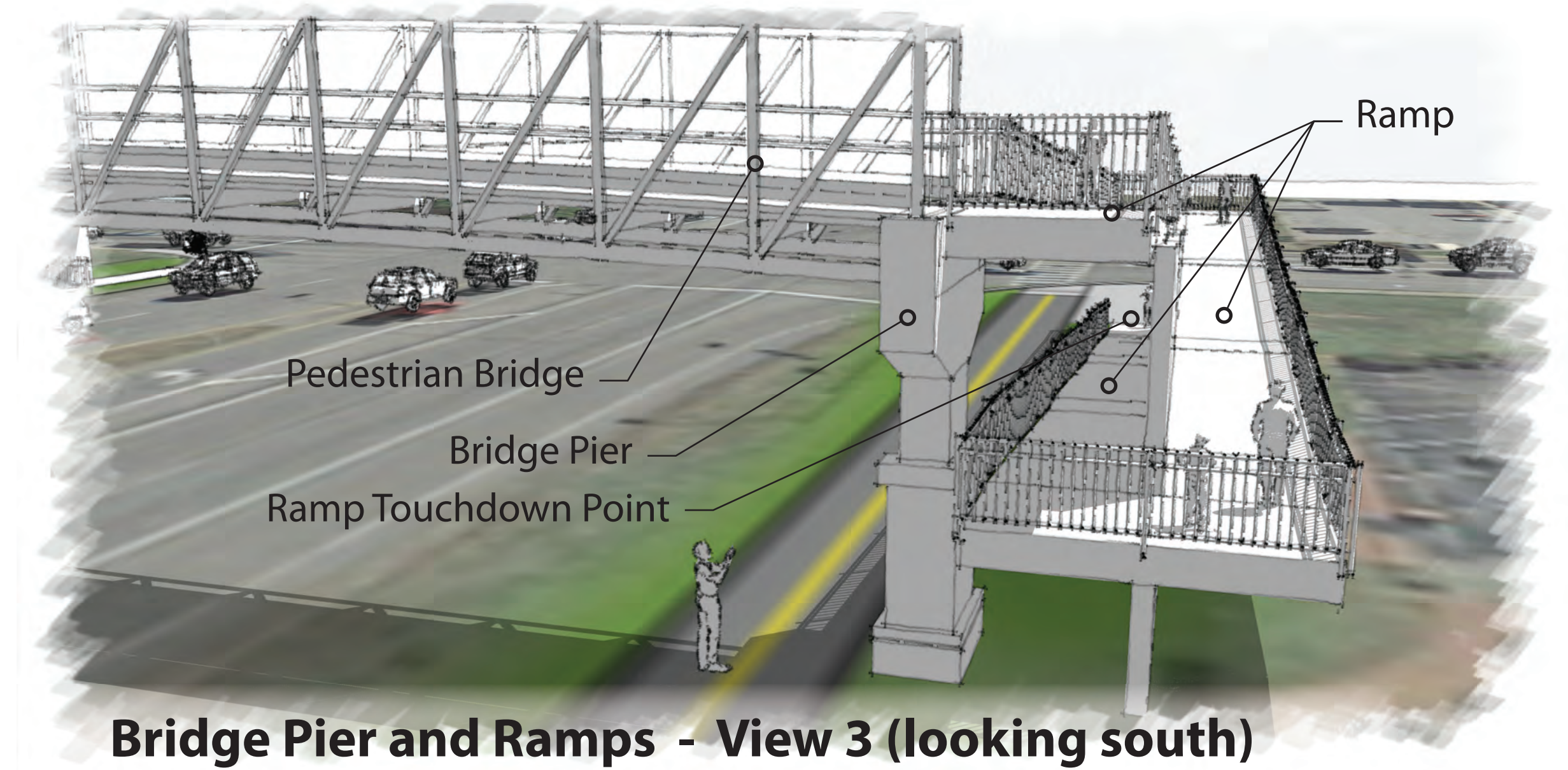
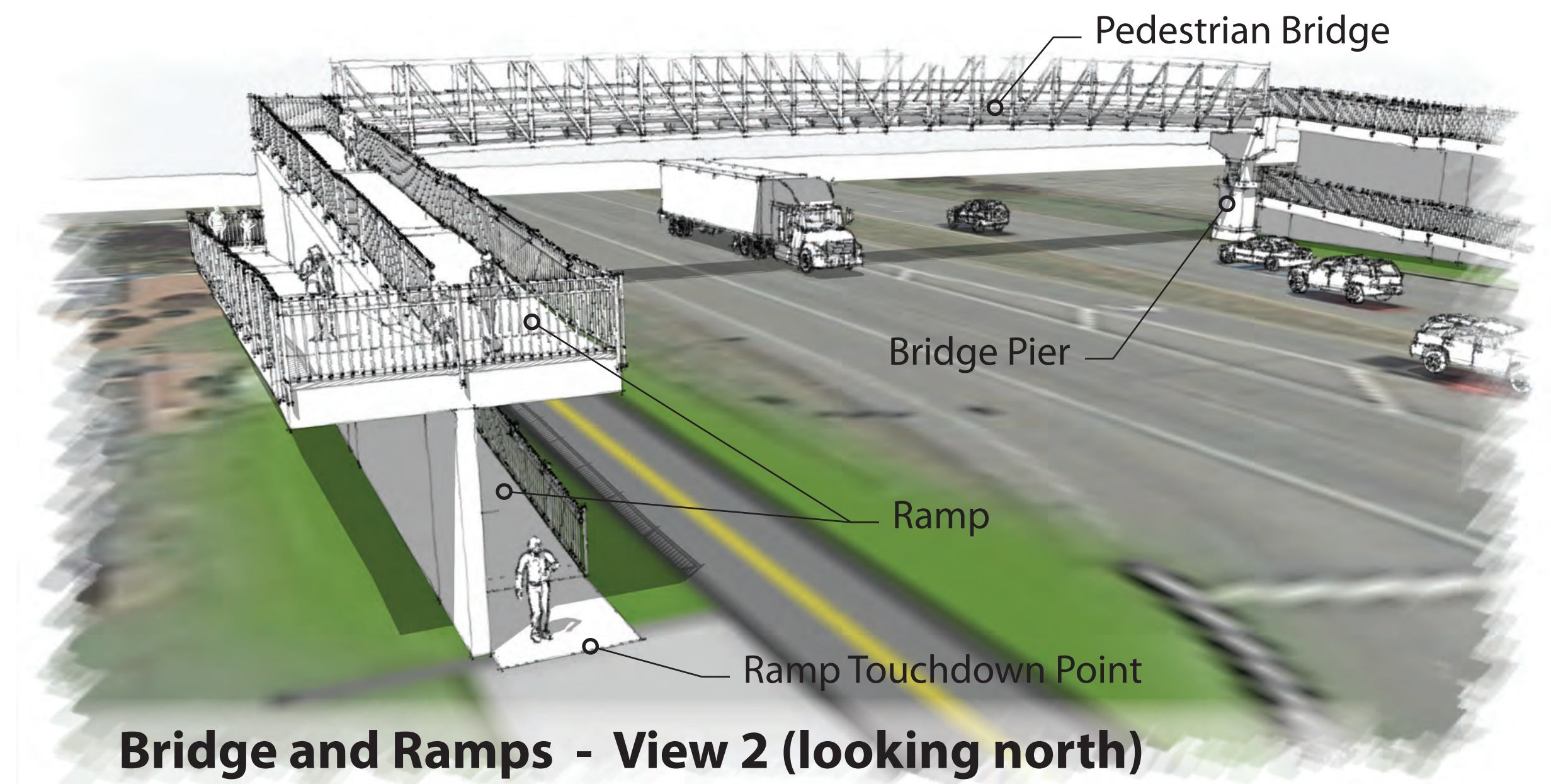
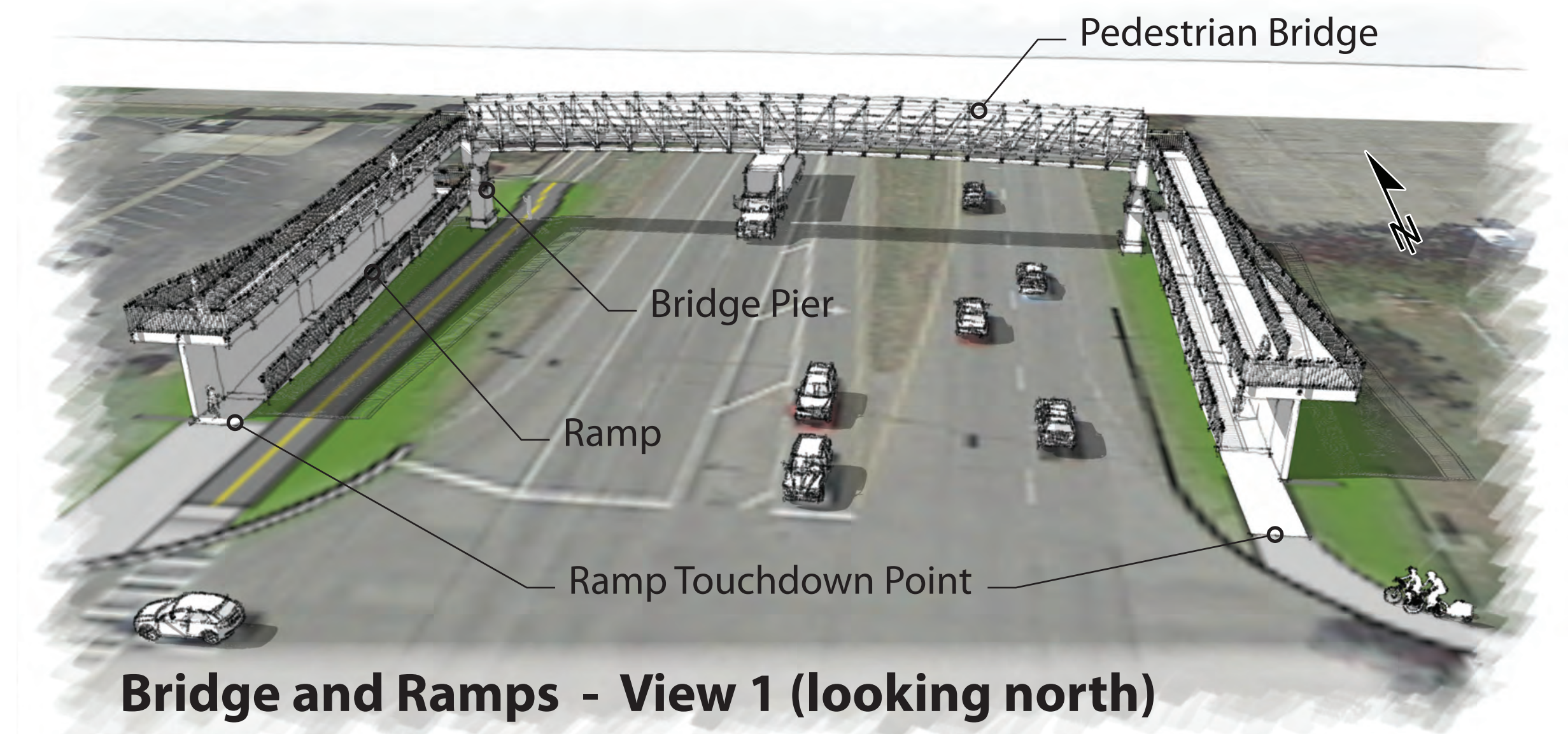
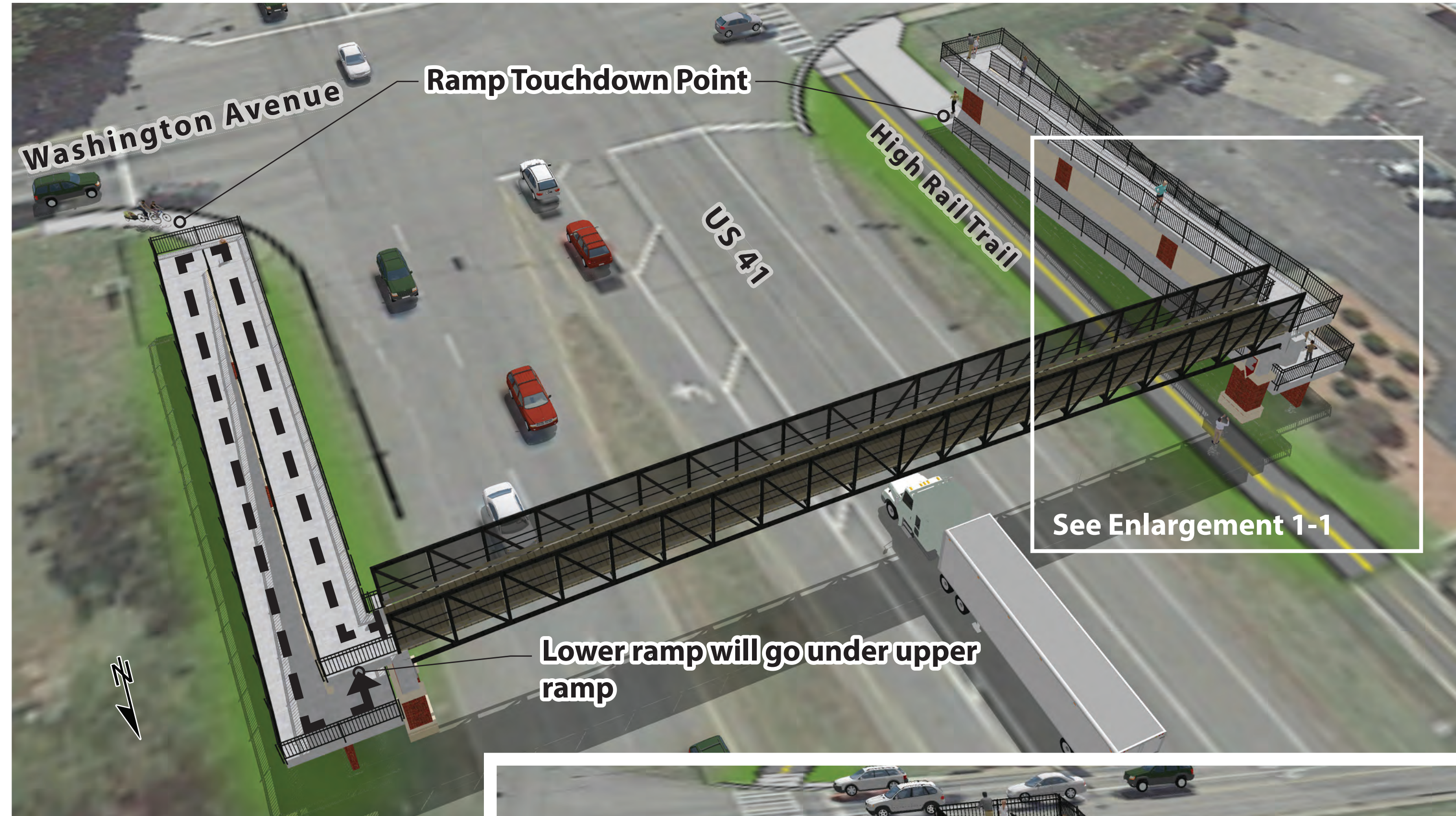
Location Plan - Pedestrian Bridge



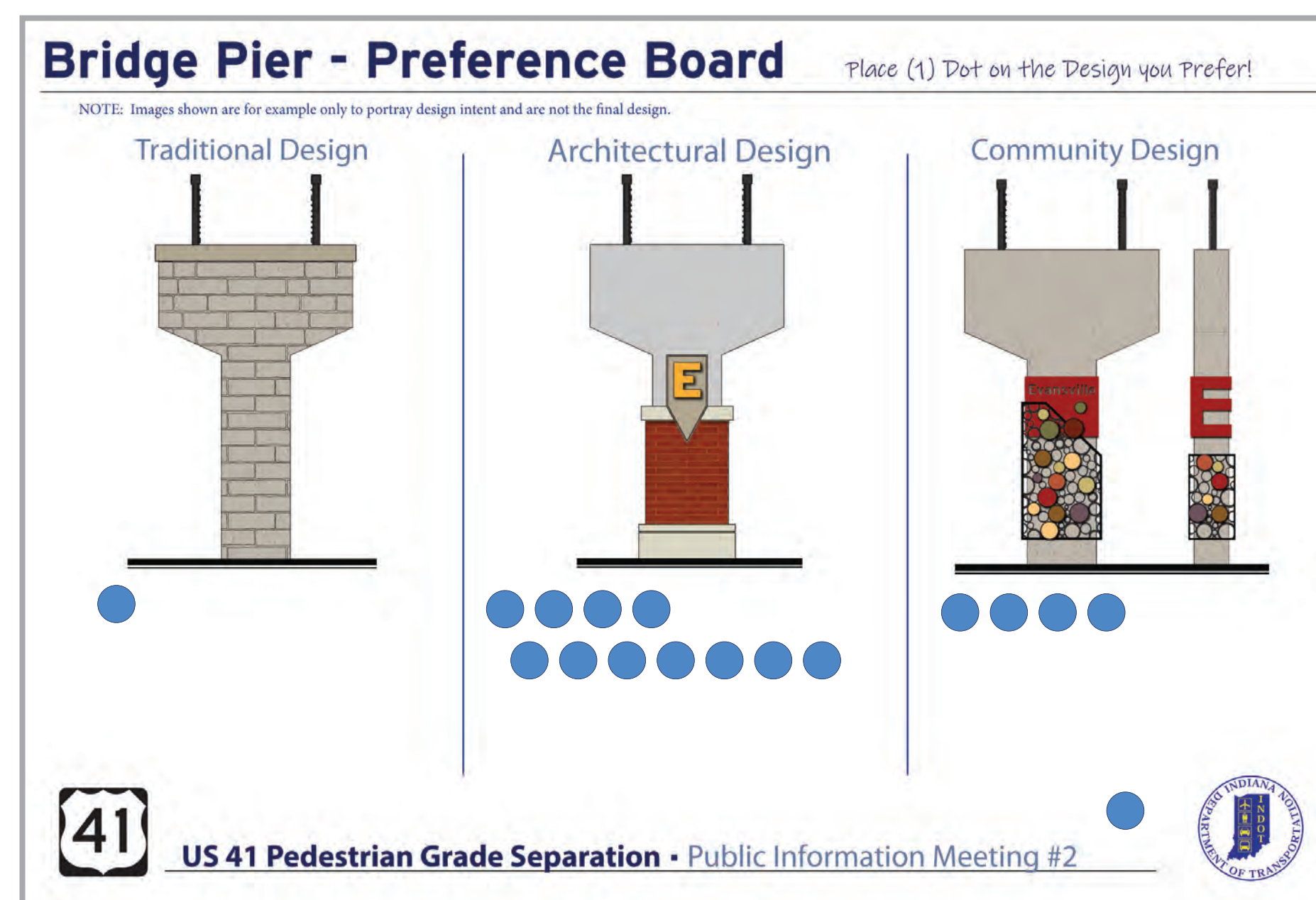
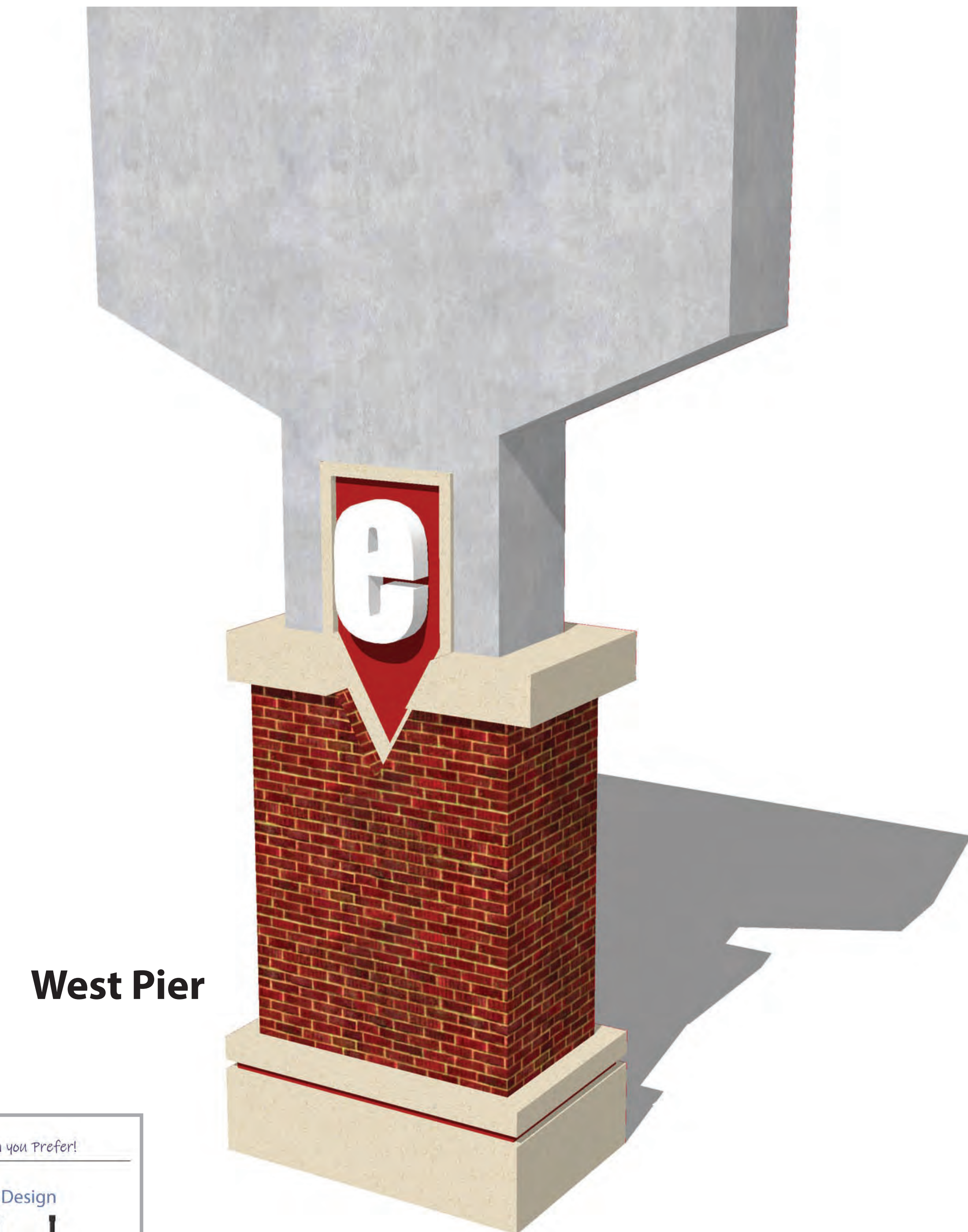
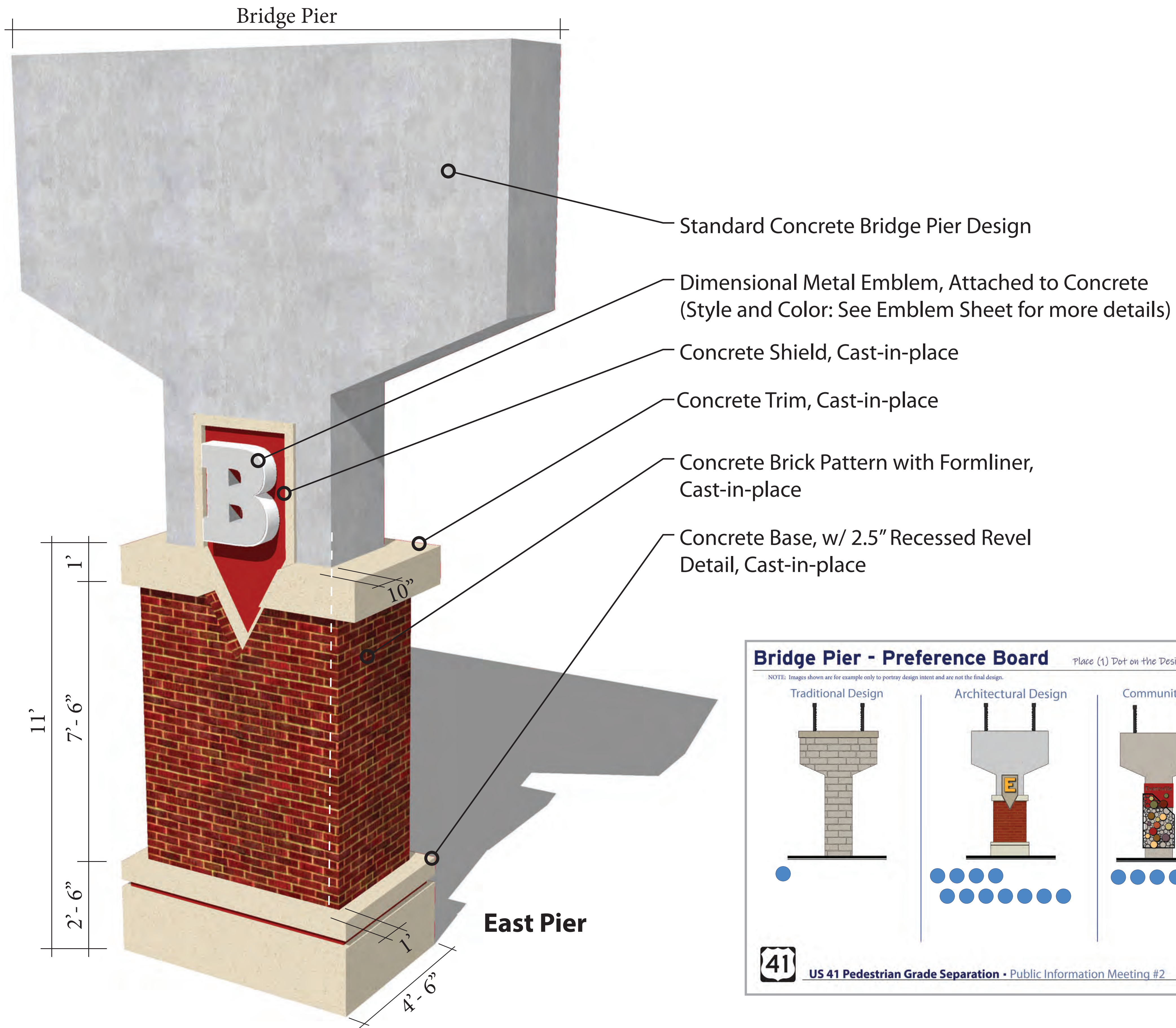
US 41 Pedestrian Bridge Project - Public Hearing



Pedestrian Bridge - Ramp Schematics



Pier Aesthetics



Public Meeting #2
Preference Results



US 41 Pedestrian Bridge Project - Public Hearing



Bridge Truss Design

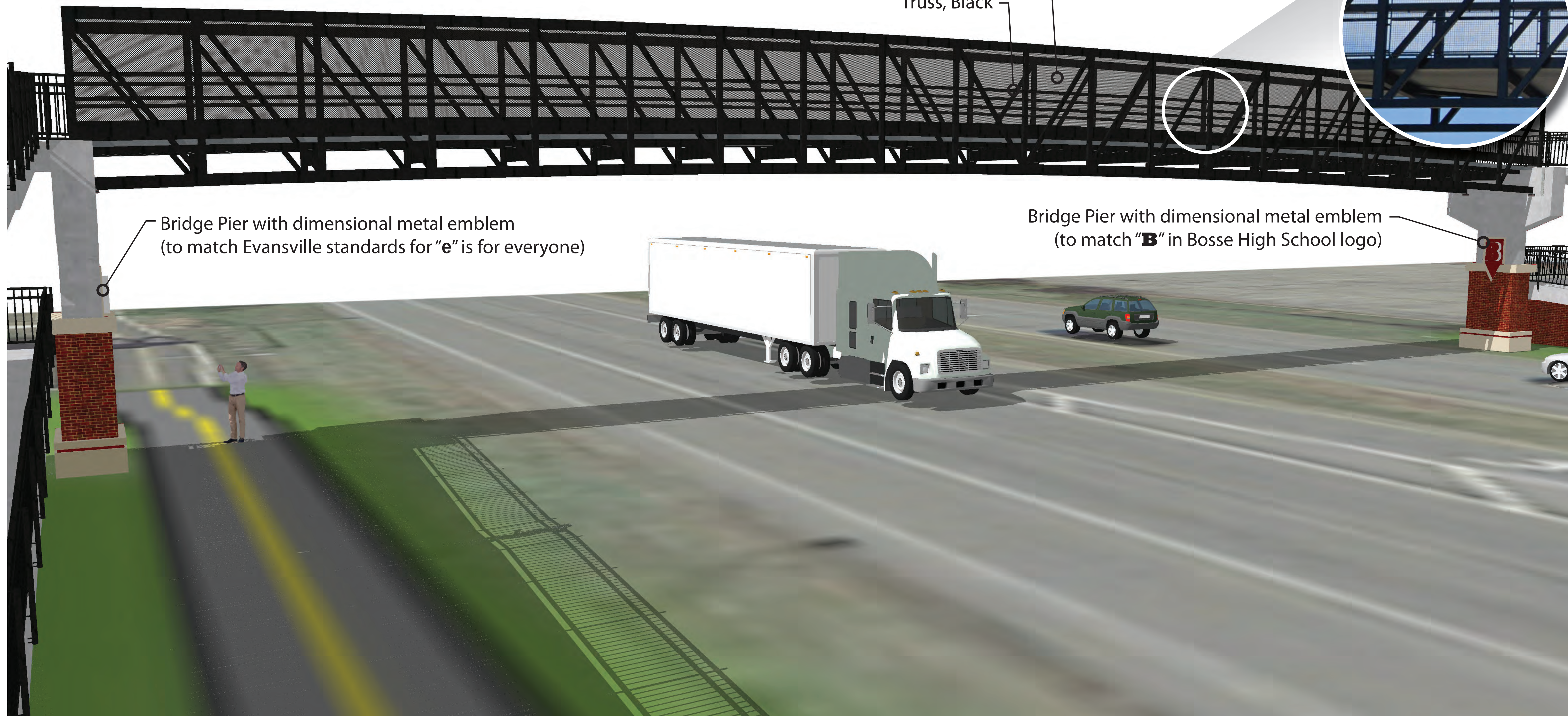
Example of Metal Mesh Panel at Vann Avenue Bridge:

Metal Mesh Panels, Black (same as Llyod Expressway)

Truss, Black

Bridge Pier with dimensional metal emblem
(to match Evansville standards for "e" is for everyone)

Bridge Pier with dimensional metal emblem
(to match "B" in Bosse High School logo)

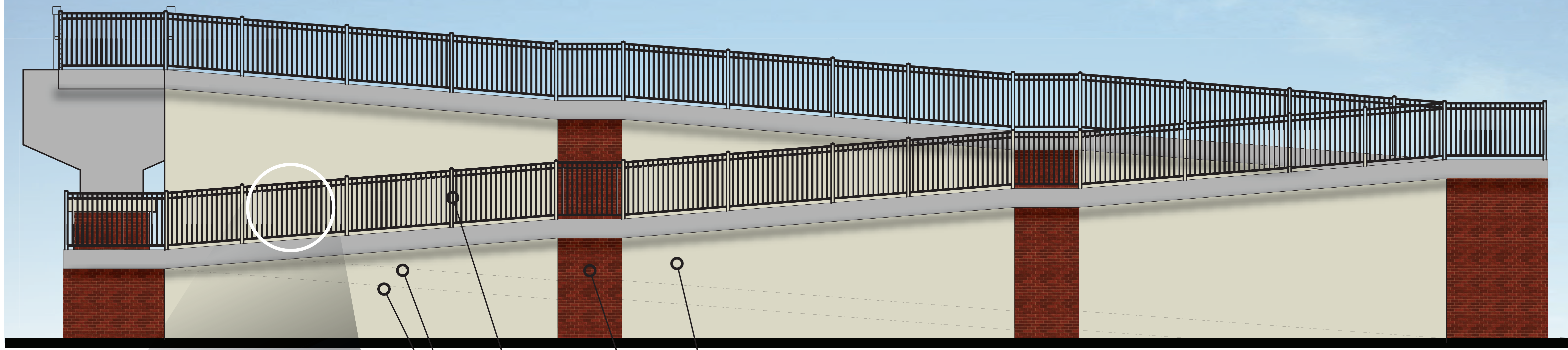


US 41 Pedestrian Bridge Project ▪ Public Hearing



Ramp Rail Design

Proposed Ramp Elevation with Railing (west side ramp looking east)



Concrete Stem Wall (ramp support wall), Smooth Texture, Color: AMS STD 37769

Concrete Brick Pattern with Formliner, Cast-in-place (Typ.)

Standard Railing, Black (same as Llyod Expressway)

Ramp behind Stem Wall



Example of Standard Railing at Llyod Expressway



Standard Railing Design



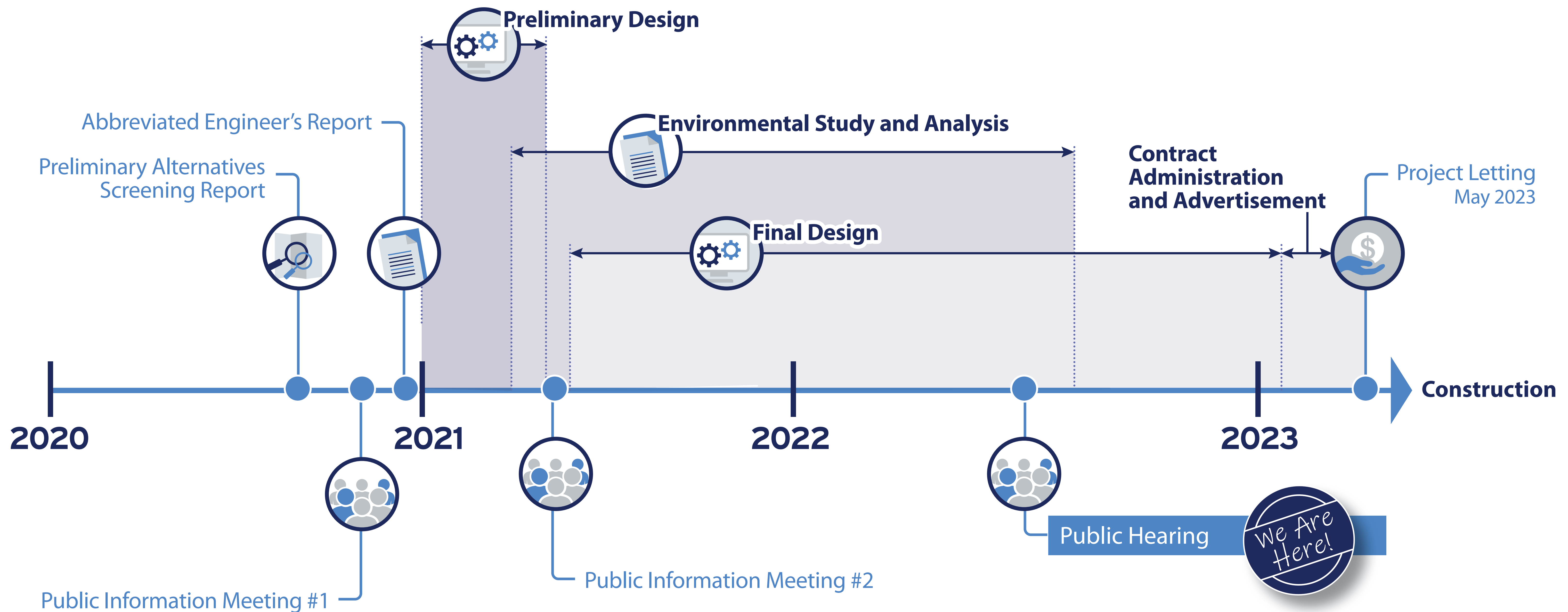
Perspective of Proposed Ramp



US 41 Pedestrian Bridge Project - Public Hearing



Project Schedule



US 41 Pedestrian Bridge Project - Public Hearing



Environmental Documentation

RECREATIONAL RESOURCES

CULTURAL RESOURCES

COMMUNITY RESOURCES

PREPARE CATEGORICAL EXCLUSION 4

□ Section 4(f)

- Historic properties and publicly owned recreational resources

□ Lincolnshire Historic District

- No Section 4(f) use of the historic district.

□ Benjamin Bosse High School and Enlow Field

- No public recreational use of the high school or Enlow Field
- No Section 4(f) use of the historic district

□ Hi-Rail Trail

- Publicly-owned and/or managed trail
- Relocation of trail and acquisition of property
- Coordination with Official with Jurisdiction
- The project is anticipated to be a *de minimis* impact to the trail.
- A *de minimis* impact is one that, after taking into account any measure to minimize harm (such as avoidance, minimization, mitigation or enhancement measures), the project will not adversely affect the activities, features, or attributes qualifying a park, recreation area, or refuge for protection under Section 4(f). A *de minimis* impact determination requires public involvement and concurrence from the official with jurisdiction. The official with jurisdiction for the trail is the City of Evansville.

□ Invitation to Consulting Parties (January 8, 2021)

□ Archaeology: No known sites

□ Historic Property Report:

- Lincolnshire Historic District (NR-0908) was identified as being listed in the NRHP.
- Publicly owned resources within the district include Benjamin Bosse High School (IHSSI No. 163-196-41045), “Outstanding;” and Enlow Field (IHSSI No. 163-196-41044), “Outstanding.” Documentation of Effects: Section 800.11 finding of No Adverse Effect



□ Coordination:

- Early Coordination
- Two stakeholder meetings
- Two Public Meetings
- Extensive stakeholder and interested parties mailing list

□ Environmental Justice

- Inclusion of multiple agencies in project review
- Promise Zone
- No negative impacts to low income or minority populations



US 41 Pedestrian Bridge Project ▪ Public Hearing



Historic Resource Review

The Section 106 Process



Before a review begins, the federal agency must decide if Section 106 applies.



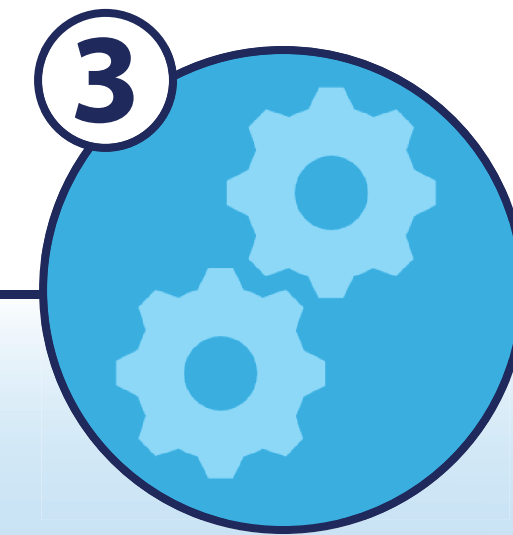
1. Initiating Section 106

The federal agency identifies who should be involved in consultation and plans to involve the public.



2. Identifying Historic Properties

The federal agency identifies historic properties in the area where the projects could have effects.



3. Assessing Effects

The federal agency consults to assess the effects of the project on historic properties.



4. Achieving a Resolution

The federal agency explores alternatives to avoid, minimize, or mitigate adverse effects.



Our Timeline

1. Initiating Section 106

Early coordination sent in January 8, 2021 with invitation to be a Consulting Party to local, state and tribal parties. Identified the State Historic Preservation Officer, the Evansville Historic Preservation Officer, Indiana Landmarks, Miami Tribe of Oklahoma, and Shawnee Tribe accepted consulting party status.

2. Identifying Historic Properties:

Below Ground – Project reviewed by an archaeologist and found to be disturbed

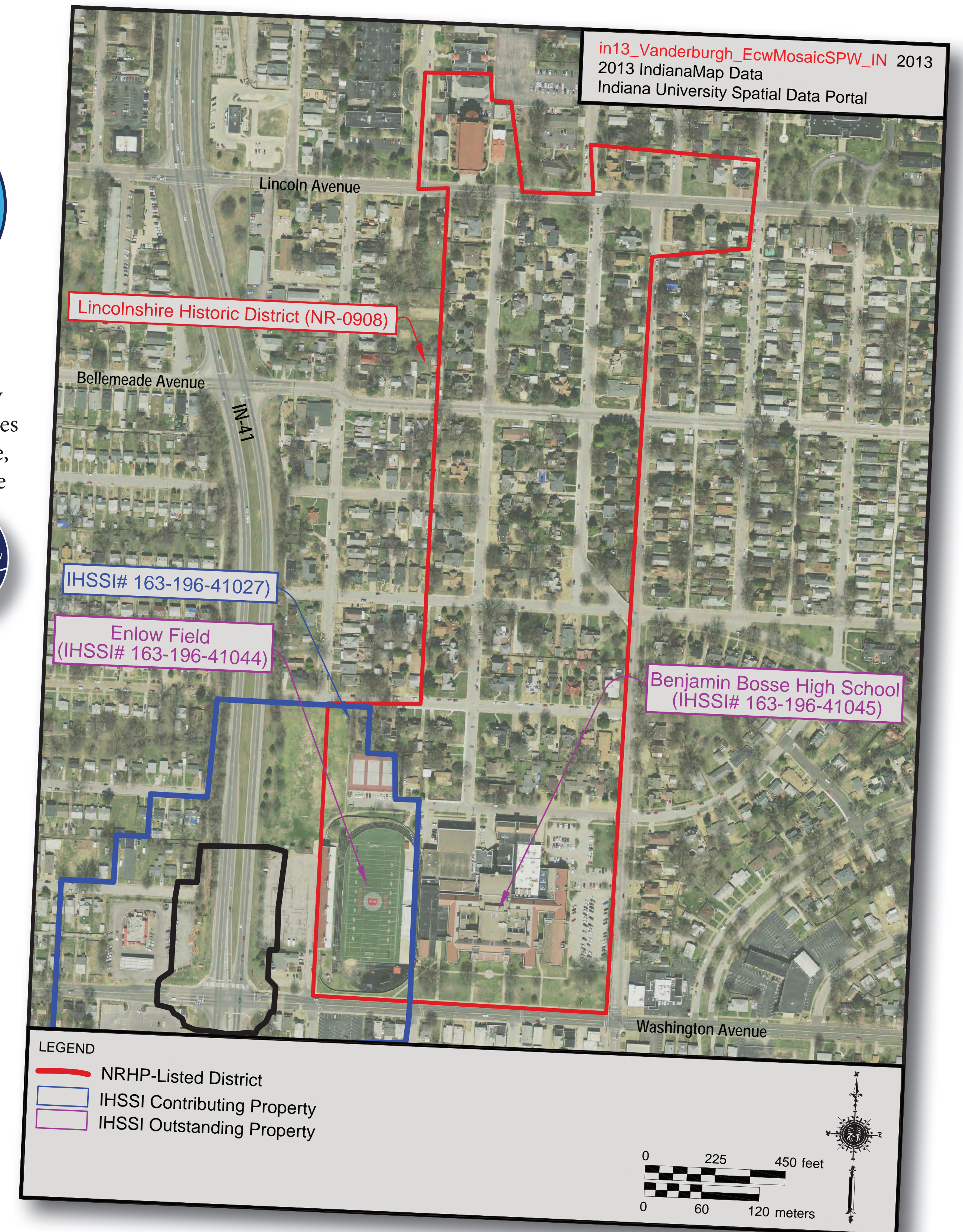
Above Ground - Historic Property Report identified one property listed in the NRHP, the Lincolnshire Historic District which contains both Enlow Field and Benjamin Bosse High School.

3. Assess Effects:

Prepare Effects Letter and Section 800.11 to document effects. No Adverse Effect.

4. Achieve Resolution:

Consulting Parties concurrence with No Adverse Effect and Aesthetic Treatments.



US 41 Pedestrian Bridge Project - Public Hearing

