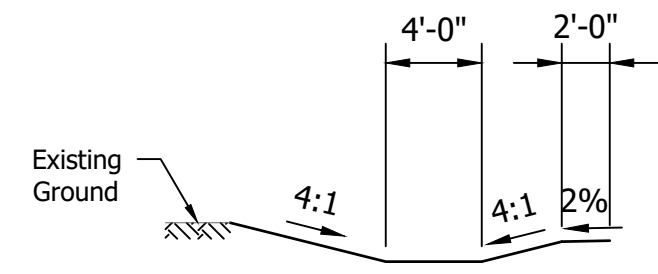
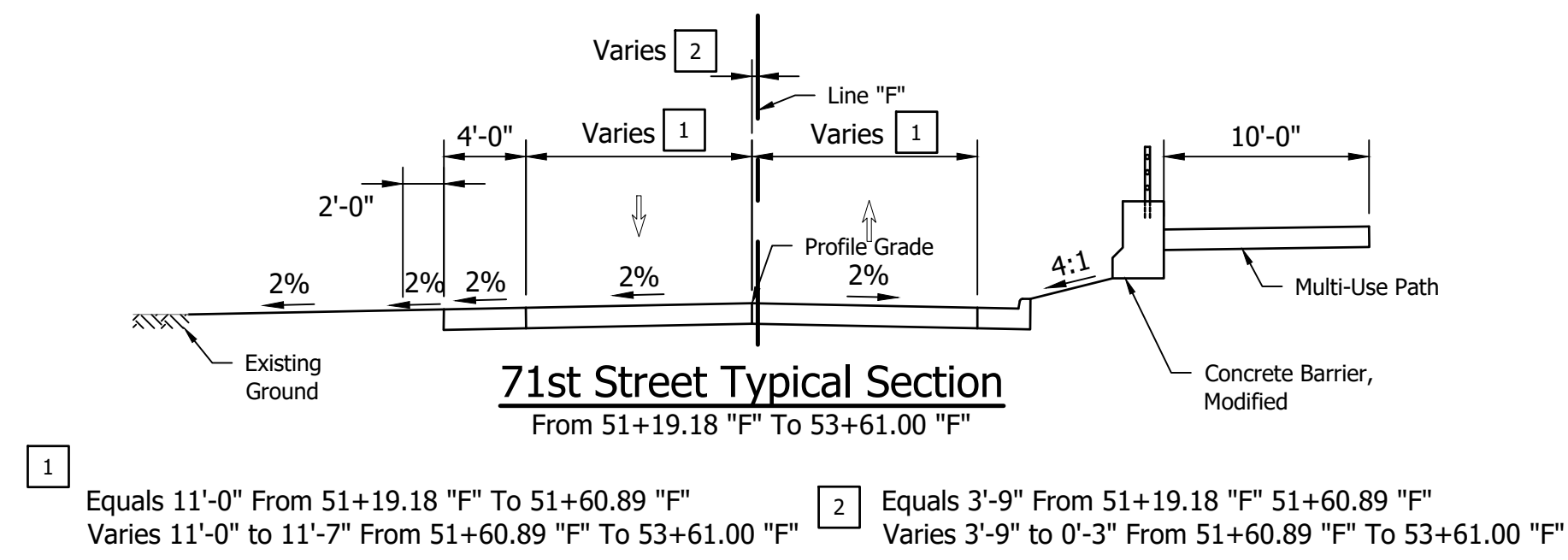


Preliminary Plans - Excerpts

East 71st Street Multi-Use Trail



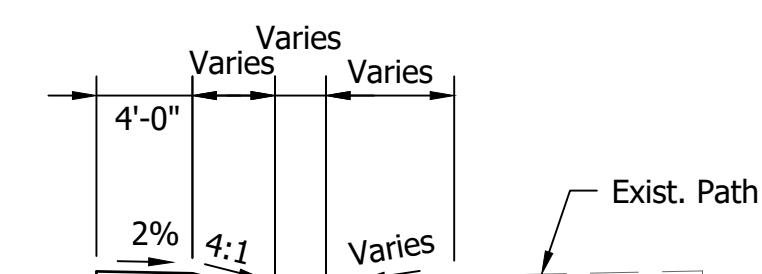
71st Street Ditch Detail
From 51+19.18 "F" To 53+04.38 "F"



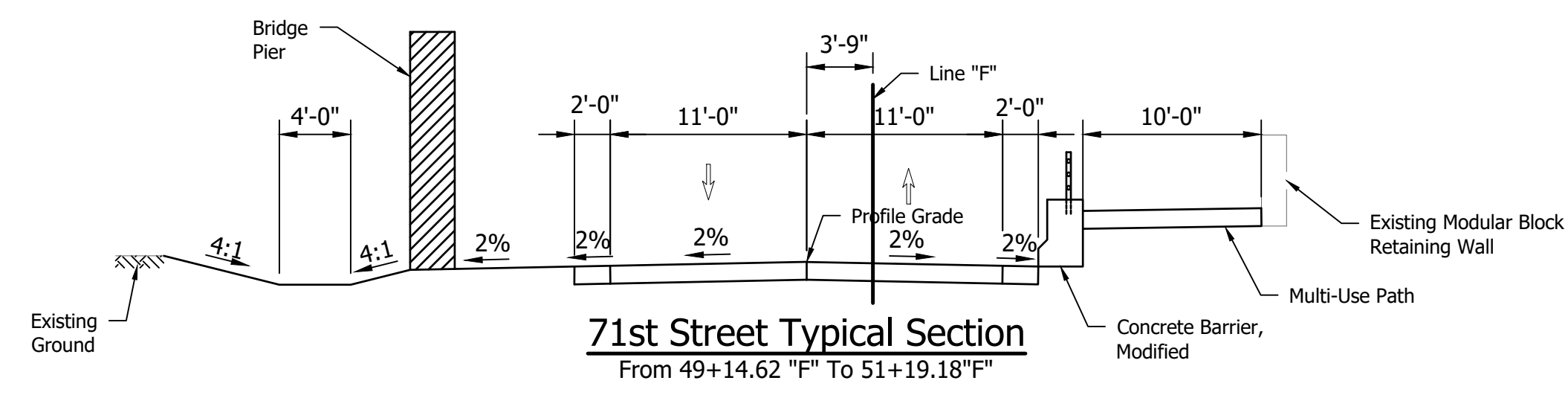
71st Street Typical Section
From 51+19.18 "F" To 53+61.00 "F"

1 Equals 11'-0" From 51+19.18 "F" To 51+60.89 "F"
Varies 11'-0" to 11'-7" From 51+60.89 "F" To 53+61.00 "F"

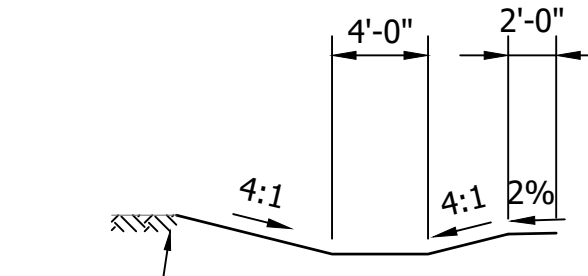
2 Equals 3'-9" From 51+19.18 "F" To 51+60.89 "F"
Varies 3'-9" to 0'-3" From 51+60.89 "F" To 53+61.00 "F"



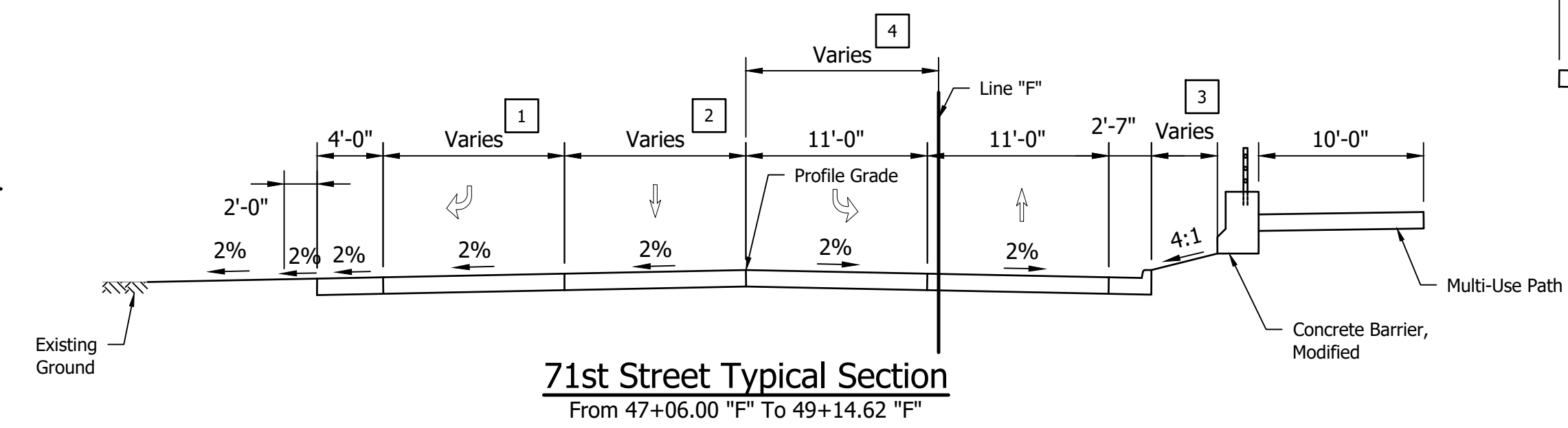
71st Street Ditch Detail
From 52+37.56 "F" To 53+61.00 "F"
Proposed Path & Concrete Barrier End Sta. 51+49.55 "F"



71st Street Typical Section
From 49+14.62 "F" To 51+19.18 "F"



71st Street Ditch Detail
From 48+69.22 "F" To 49+14.62 "F"



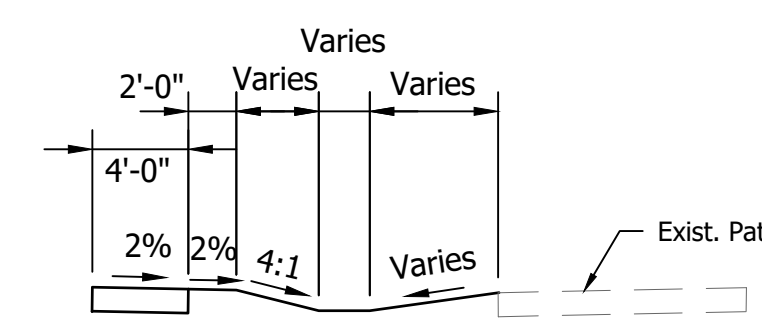
71st Street Typical Section
From 47+06.00 "F" To 49+14.62 "F"

1 Equals 11'-0" From 47+06 "F" To 48+14.59 "F"
Varies 11'-0" to 0'-0" From 48+14.59 "F" To 48+70.00 "F"

2 Equals 11'-0" From 47+06 "F" To 48+70.00 "F"
Varies 11'-0" to 0'-0" From 48+70.00 "F" To 49+14.62 "F"

3 Varies 8'-0" To 0'-0" From 48+44.09 "F" To 48+84.77 "F"

4 Varies 11'-8" To 12'-1" From 47+06.00 "F" To 48+14.59 "F"
Varies 12'-1" To 3'-9" From 48+14.59 "F" To 49+14.62 "F"



71st Street Ditch Detail
From 47+06.00 "F" To 48+06.86 "F"
Proposed Path Begins Sta. 47+84.95 "F"

File Name: P:\BR\CD\16-23\Road\Draw\Plans\Typical Sections.dwg Plot Date: 5/11/2020 Plotted By: Andy Allison



8440 Allison Pointe Blvd.
Suite 200
Indianapolis, IN 46250
Phone 317-895-2585
www.ucindy.com



RECOMMENDED FOR APPROVAL	DESIGN ENGINEER	DATE
DESIGNED: AJA	DRAWN: JNII	
CHECKED: WRC	CHECKED: WRC	

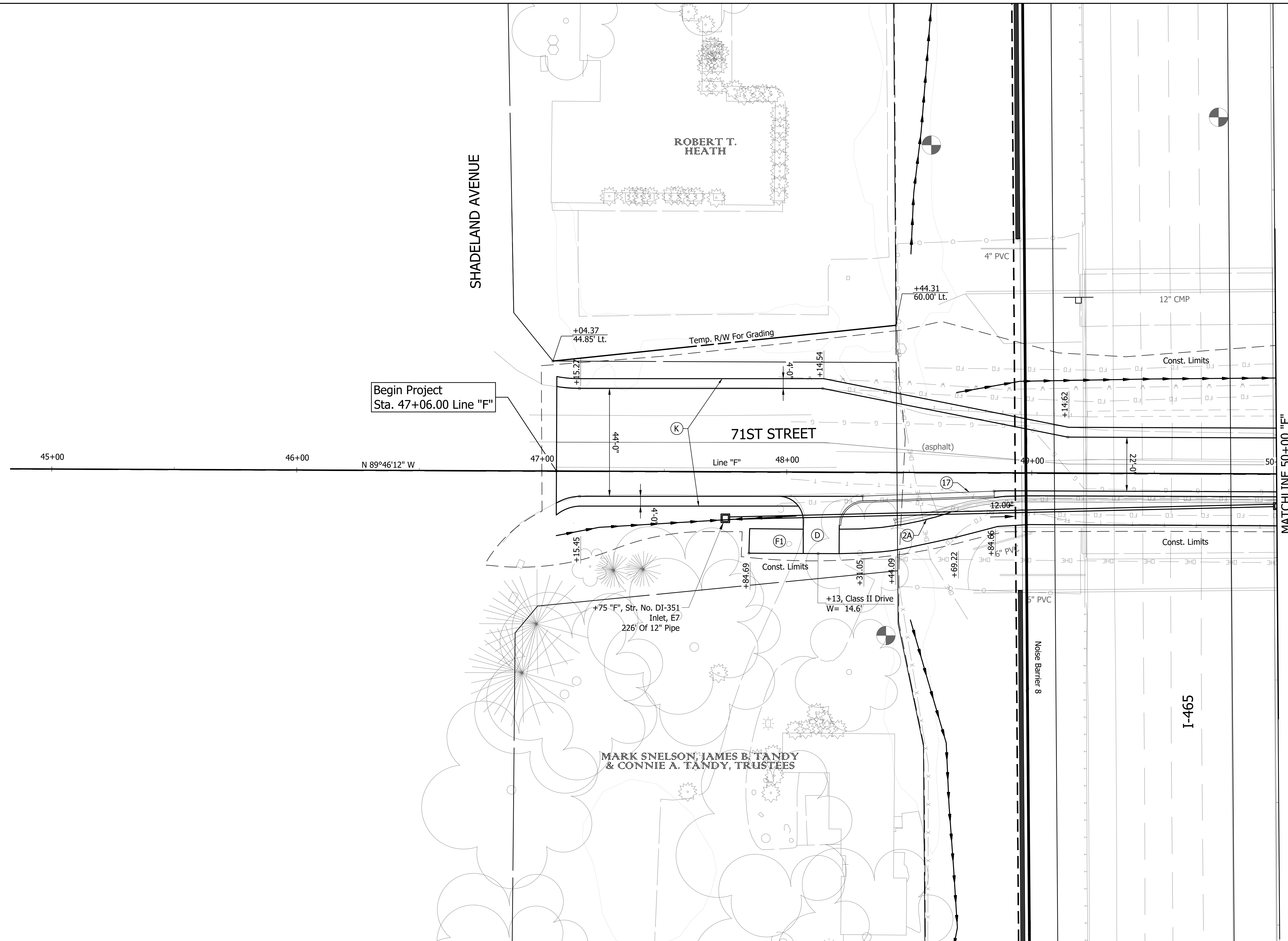
INDIANA
DEPARTMENT OF TRANSPORTATION

TYPICAL
SECTIONS

HORIZONTAL SCALE	BRIDGE FILE
AS SHOWN	
VERTICAL SCALE	DESIGNATION
AS SHOWN	1400075
SURVEY BOOK	SHEETS
	40 of 1675
CONTRACT	PROJECT
R-38526	1400075

File Name: P:\BR\16223\Road\Draw\Plans\Plan & Profile Line PRF.dwg Plot Date: 5/11/2020 Plotted By: Civil 3D User

- (2A) Concrete Barrier, Modified
- (17) Curb and Gutter, Concrete
- (D) HMA For Drives
- (K) Full Depth HMA - 71st Street
- (F1) HMA For Sidewalk
- (M) Milling, Asphalt, 1.5"
- (R) Resurfacing
- (R1) Approach Resurfacing



8440 Allison Pointe Blvd.
Suite 200
Indianapolis, IN 46250
Phone 317-895-2585
www.ucindy.com



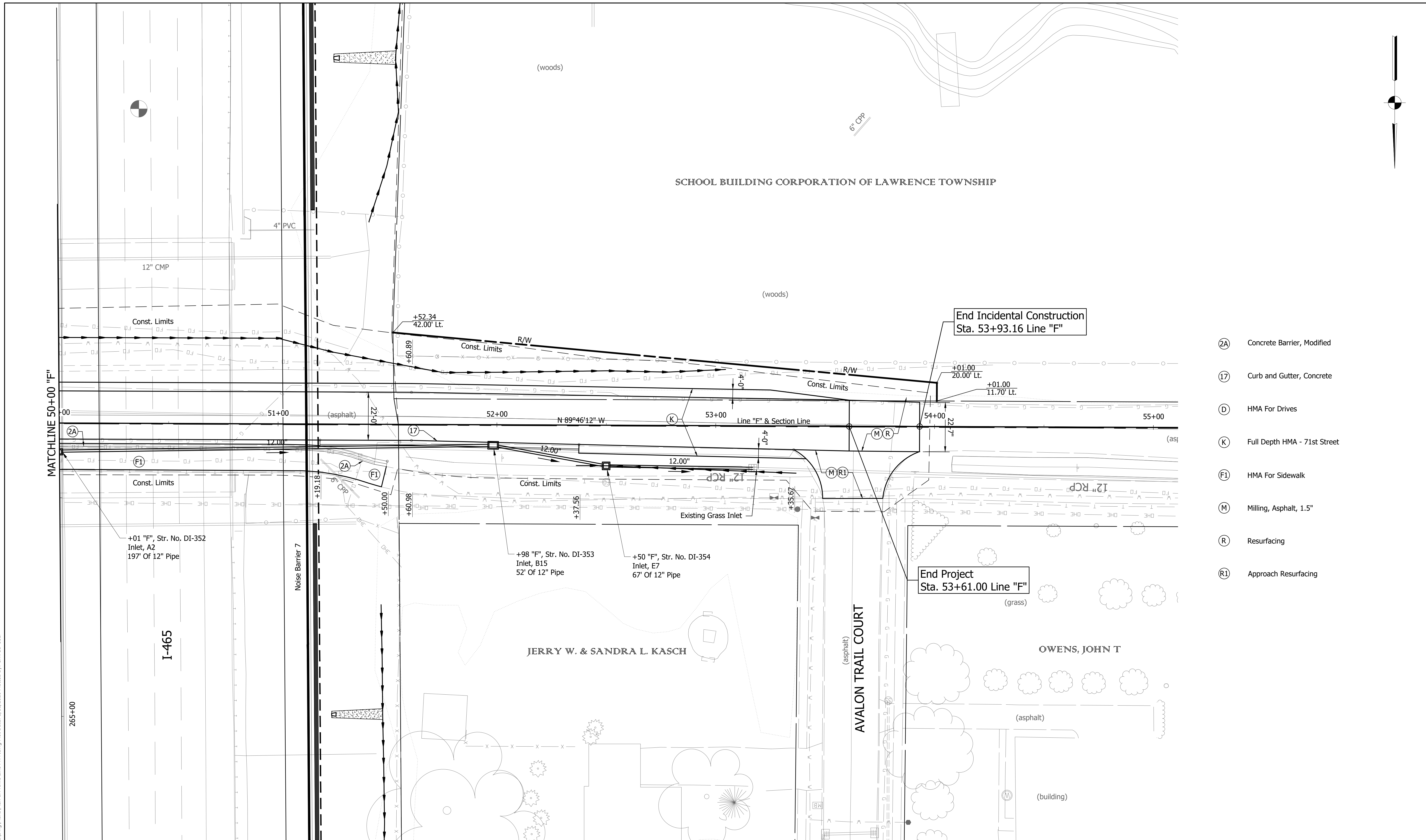
RECOMMENDED FOR APPROVAL		DESIGN ENGINEER	DATE
DESIGNED: HEK	DRAWN: JNII		
CHECKED: WRC	CHECKED: WRC		

INDIANA
DEPARTMENT OF TRANSPORTATION

PLAN
LINE "F"

HORIZONTAL SCALE	BRIDGE FILE
1" = 20'	
VERTICAL SCALE	DESIGNATION
N/A	1400075
SURVEY BOOK	SHEETS
	790 of 1675
CONTRACT	PROJECT
R-38526	1400075

File Name: P:\BR\CD\16-23\Board\Draw\Plans\Plan & Profile Line PRF.dwg Plot Date: 5/11/2020 Plotted By: Civil 3D User



- Ⓐ Concrete Barrier, Modified
- Ⓙ Curb and Gutter, Concrete
- Ⓓ HMA For Drives
- Ⓚ Full Depth HMA - 71st Street
- Ⓛ HMA For Sidewalk
- Ⓜ Milling, Asphalt, 1.5"
- Ⓡ Resurfacing
- Ⓡ1 Approach Resurfacing



8440 Allison Pointe Blvd.
Suite 200
Indianapolis, IN 46250
Phone 317-895-2585
www.ucindy.com



RECOMMENDED FOR APPROVAL	DESIGN ENGINEER	DATE
DESIGNED: HEK	DRAWN: JNII	
CHECKED: WRC	CHECKED: WRC	

INDIANA
DEPARTMENT OF TRANSPORTATION

PLAN
LINE "F"

HORIZONTAL SCALE	BRIDGE FILE
1" = 20'	
VERTICAL SCALE	DESIGNATION
N/A	1400075
SURVEY BOOK	SHEETS
	792 of 1675
CONTRACT	PROJECT
R-38526	1400075