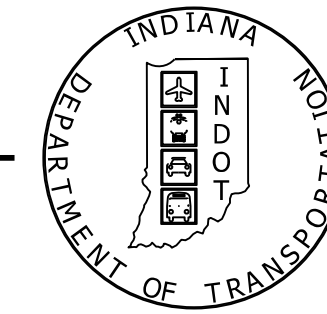


PROJECT	DESIGNATION
1700166	1700166
CONTRACT	BRIDGE FILE
B-40553	065-63-10332

INDIANA DEPARTMENT OF TRANSPORTATION



STRUCTURE	TYPE	SPAN AND SKEW	OVER	STATION
065-63-10332	REINFORCED CONCRETE BOX CULVERT	SINGLE SPAN: 22'-0" SKEW: 21° LT.	BRANCH HARDIN CREEK	104+90.89 LINE "A"

TRAFFIC DATA			
A.A.D.T.	(2022)	377	V.P.D.
A.A.D.T.	(2042)	377	V.P.D.
D.H.V	(2042)	38	V.P.H.
DIRECTIONAL DISTRIBUTION		52.26	%
TRUCKS		10.88	% A.A.D.T.
		23.68	% D.H.V.

DESIGN DATA			
DESIGN SPEED	50	M.P.H.	
PROJECT DESIGN CRITERIA	3R (NON-FREEWAY)		
FUNCTIONAL CLASSIFICATION	MAJOR COLLECTOR		
RURAL/URBAN	RURAL		
TERRAIN	LEVEL		
ACCESS CONTROL	NONE		

BRIDGE PLANS

FOR SPANS OVER 20 FEET

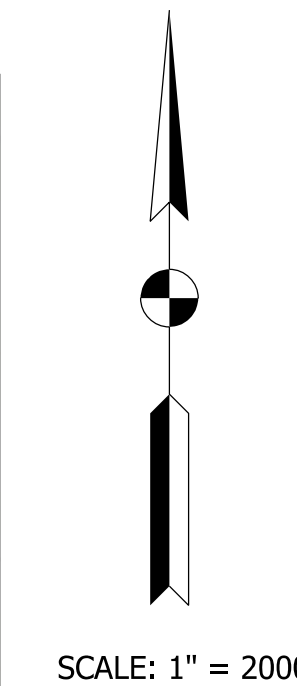
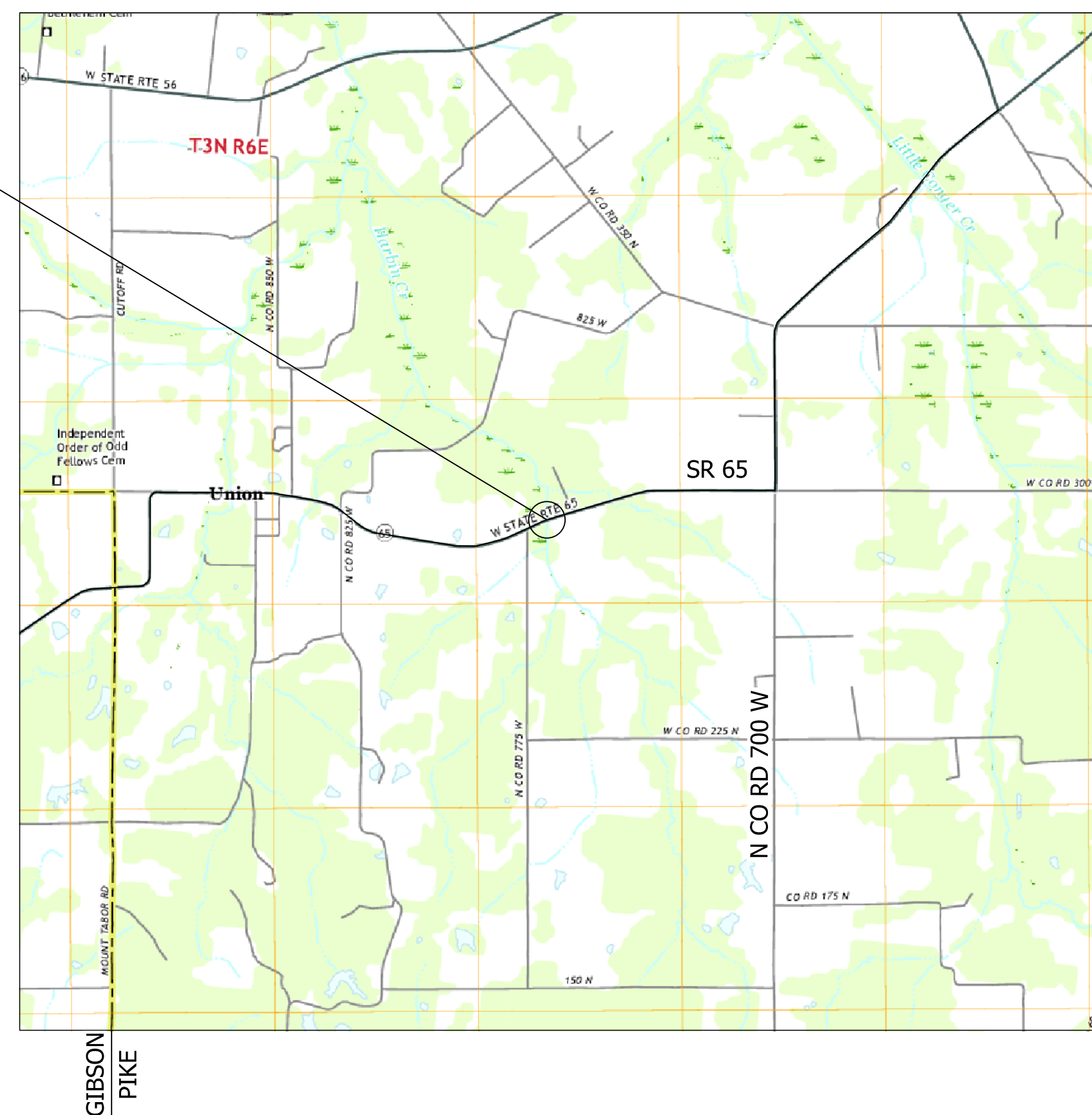
ROUTE: SR 65 AT: RP 44+55

PROJECT NO. 1700166 (P.E., R/W, CONST.)

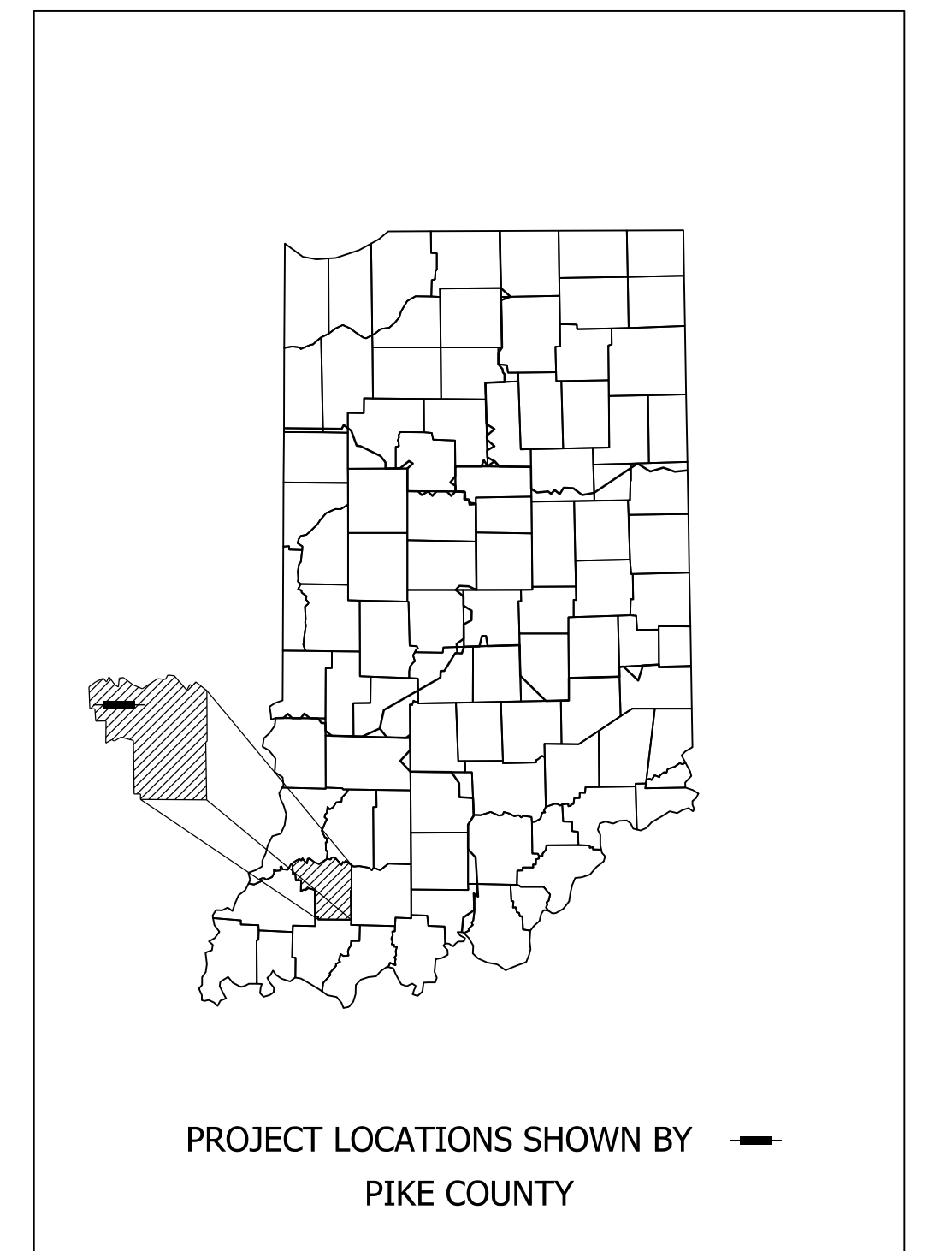
KIN PROJECT INFORMATION		
DESIGNATION	PROJECT DESCRIPTION	LEAD DES
1700150	SR 356 OVER MUD CREEK	
1700166	SR 65 OVER BRANCH HARDIN CREEK	
1700160	SR 65 OVER HARDIN CREEK	
1700165	SR 65 OVER BLACK RIVER	

BRIDGE REPLACEMENT ON SR 65 OVER BRANCH HARDIN CREEK, LOCATED APPROXIMATELY 2.16 MILES SOUTH OF SR 56, SECTION 4, T-1-S, R-9-W, CLAY TOWNSHIP, PIKE COUNTY, INDIANA.

SR 65 OVER BRANCH HARDIN CREEK
BRIDGE FILE NO. 065-63-10332
STA. 104+90.89 LINE "A"
BEGIN PROJECT 104+35.00
END PROJECT 105+34.00



SCALE: 1" = 2000'



LATITUDE: 38° 27' 51" LONGITUDE: -87° 25' 12"

BRIDGE LENGTH: 0.005 MI.
ROAD LENGTH: 0.014 MI.
TOTAL LENGTH: 0.019 MI.
MAX. GRADE: -0.88 %

HUC: 051202021004

STAGE 1 PLANS
SEPTEMBER 6, 2019

NOTE TO REVIEWER
PLEASE SEE CORRESPONDENCE FILE FOR DOCUMENTATION OF DESIGN DECISIONS.

LOCATION MAP
(PIKE COUNTY)

INDIANA DEPARTMENT OF TRANSPORTATION
STANDARD SPECIFICATIONS DATED 2020
TO BE USED WITH THESE PLANS.

arecken
9/6/2019 1:51:26 pm
model:Sheet_1
file: \\inrav001\289projects\70946_indot\2018_bridges\1090-sr65_brdge\des\1700166\cadd\cas\70946-sr-r101.dgn



HNTB Corporation
The HNTB Companies
Engineers Architects Planners
111 Monument Circle
Suite 1200
Indianapolis, IN 46204

DRAFT
NOT FOR CONSTRUCTION

PLANS PREPARED BY: HNTB Indiana, Inc. (317) 636-4682
PHONE NUMBER
CERTIFIED BY: _____ DATE
APPROVED FOR LETTING: _____ DATE
INDIANA DEPARTMENT OF TRANSPORTATION

BRIDGE FILE	
065-63-10332	
DESIGNATION	
1700166	
SURVEY BOOK	SHEETS
ELECTRONIC	1 of 12
CONTRACT	PROJECT
B-40553	1700166

UTILITIES

NOTE TO REVIEWER

UTILITY CONTACTS WILL BE
UPDATED FOR FUTURE
SUBMITTALS.



SHEET INDEX

SHEET NO.	DRAWINGS INDEX
1	TITLE SHEET
2	INDEX
3	TYPICAL SECTIONS
4	PLAN AND PROFILE
5	MAINTENANCE OF TRAFFIC DETAILS
6	LAYOUT
7	GENERAL PLAN
8	BRIDGE SUMMARY
9 - 12	CROSS SECTIONS

NOTE TO REVIEWER

PLEASE SEE CORRESPONDENCE
FILE FOR DOCUMENTATION OF
DESIGN DECISIONS.

REVISIONS

SHEET NO.	DATE	REVISED

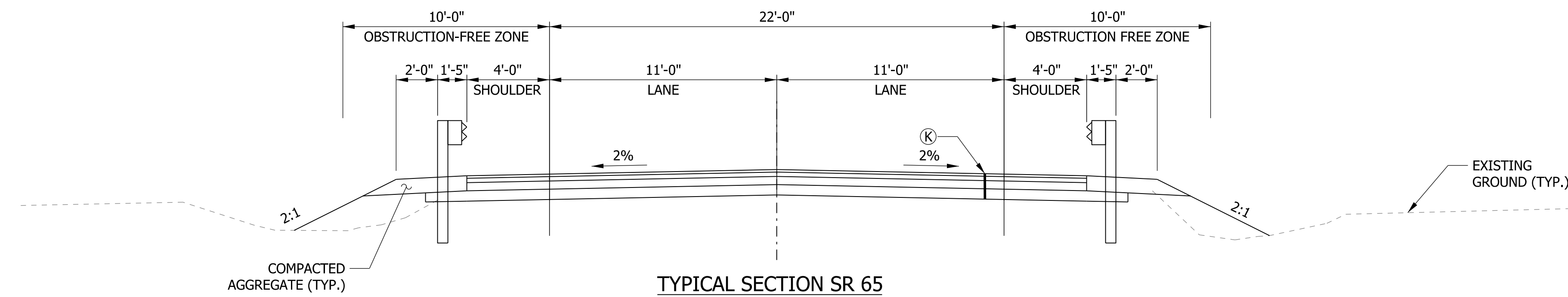
DRAFT
NOT FOR CONSTRUCTION

RECOMMENDED FOR APPROVAL	DESIGN ENGINEER	DATE
DESIGNED: JAM	DRAWN: JAM	
CHECKED: ALR	CHECKED: ENH	

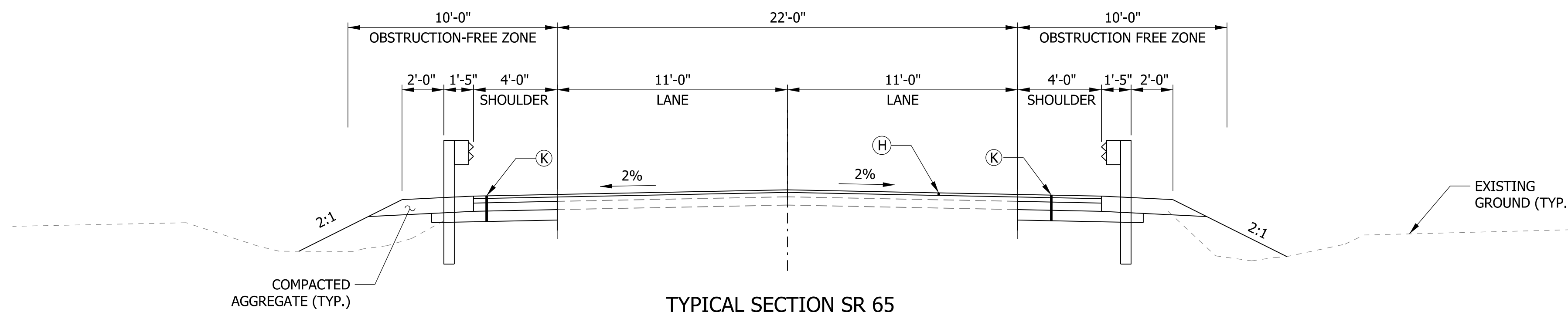
**INDIANA
DEPARTMENT OF TRANSPORTATION**

INDEX

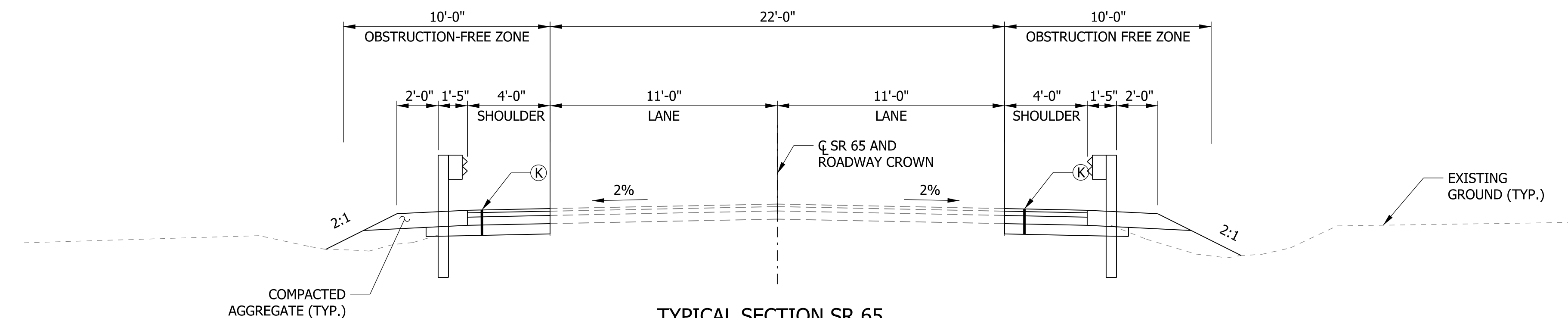
HORIZONTAL SCALE	BRIDGE FILE
N/A	065-63-10332
VERTICAL SCALE	DESIGNATION
N/A	1700166
SURVEY BOOK	SHEETS
ELECTRONIC	2 of 12
CONTRACT	PROJECT
B-40553	1700166



TYPICAL SECTION SR 65
 STA. 104+35.00 TO 104+77.97
 STA. 105+03.76 TO 105+34.00



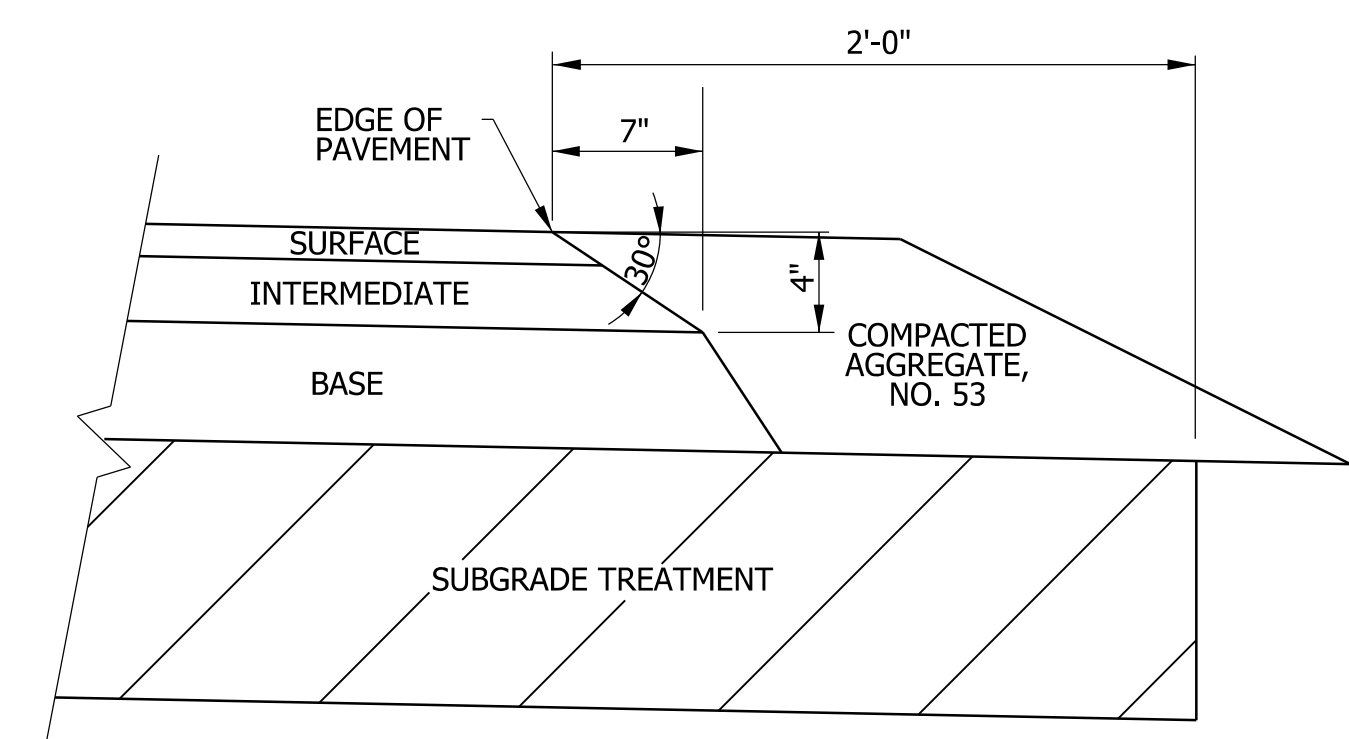
TYPICAL SECTION SR 65
 STA. 104+05.00 TO 104+35.00
 STA. 105+34.00 TO 105+64.00



TYPICAL SECTION SR 65
 STA. 103+46.38 TO 104+05.00
 STA. 105+64.00 TO 106+33.00

NOTE TO REVIEWER

FINAL PAVEMENT SECTION WILL BE DETERMINED FOR FUTURE SUBMISSIONS FOLLOWING APPROVED PAVEMENT DESIGN.



SAFETY EDGE ON HMA PAVEMENT
 N.T.S.

- (H) QC/QA-HMA, 2, 64, SURFACE, 9.5 MM
- (K) QC/QA-HMA, 2, 64, SURFACE, 9.5 MM ON QC/QA-HMA, 2, 64, INTERMEDIATE, 19.0 MM ON QC/QA-HMA, 2, 64, BASE, 25.0 MM ON 6 IN. COMPACTED AGGREGATE NO. 5, BASE ON SUBGRADE TREATMENT, TYPE IC

arecten
 9/6/2019 2:02:19 pm
 model: Typical sections
 file: \\indiv001\289projects\70946_indiv.v.2018_bridges\1090-sr65_bhardin_des\700166\cadd\cads\70946-sr-tso1.dgn

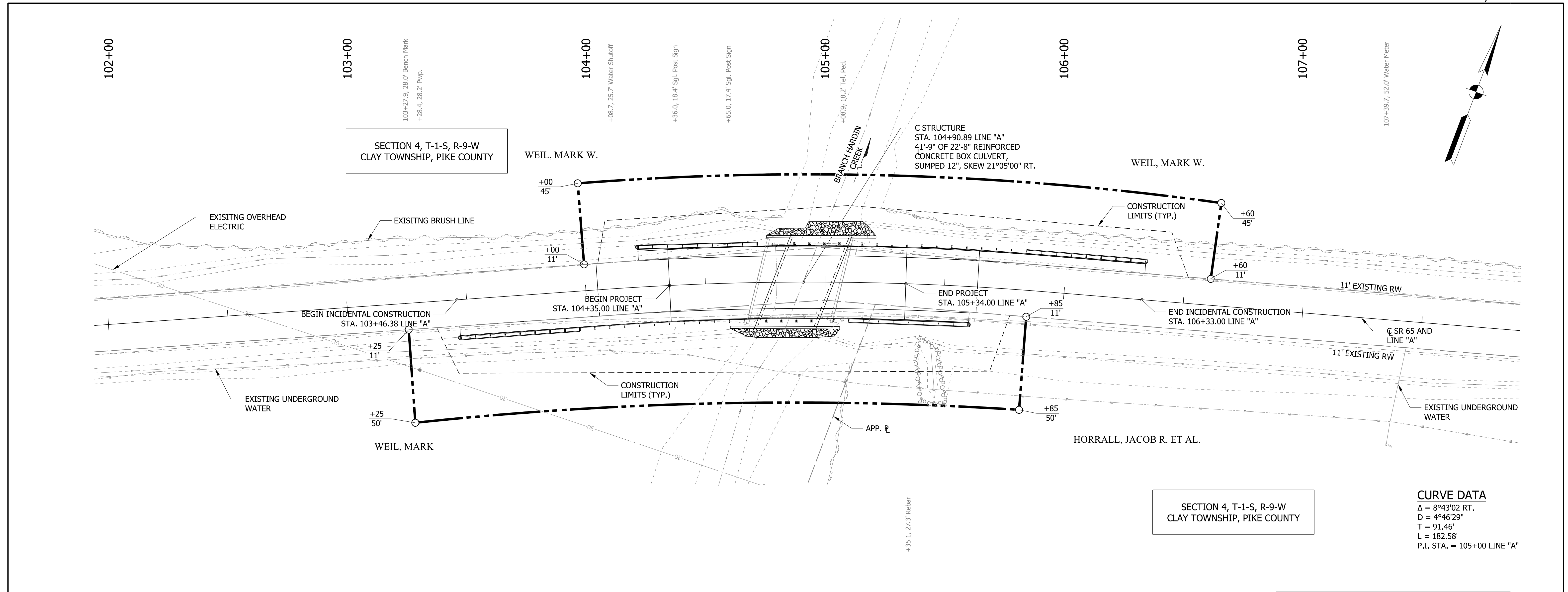
DRAFT
 NOT FOR CONSTRUCTION

RECOMMENDED FOR APPROVAL _____	DESIGN ENGINEER _____	DATE _____
DESIGNED: JAM	DRAWN: JAM	
CHECKED: ALR	CHECKED: ENH	

INDIANA DEPARTMENT OF TRANSPORTATION

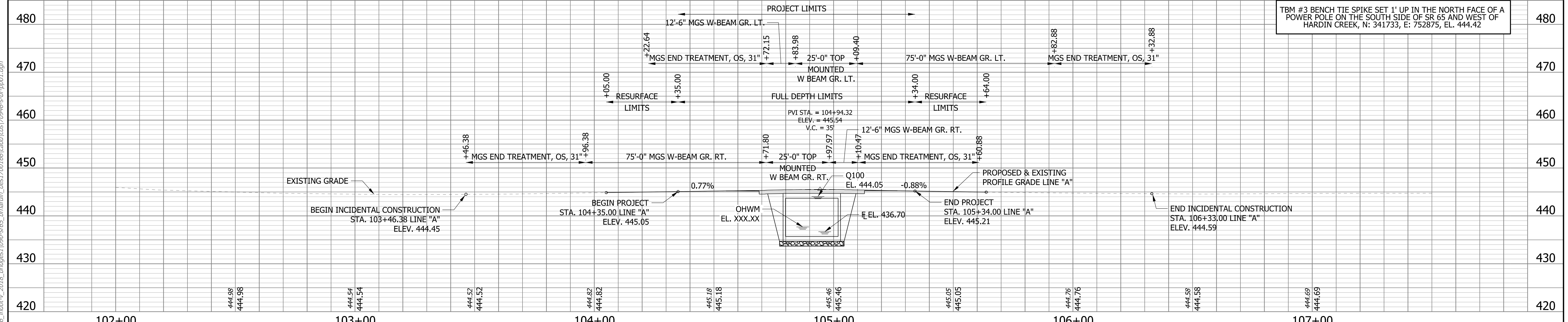
TYPICAL SECTIONS

HORIZONTAL SCALE	BRIDGE FILE
1/4" = 1'-0"	065-63-10332
VERTICAL SCALE	DESIGNATION
1/4" = 1'-0"	1700166
SURVEY BOOK	SHEETS
ELECTRONIC	3 of 12
CONTRACT	PROJECT
B-40553	1700166



SECTION 4, T-1-S, R-9-W
CLAY TOWNSHIP, PIKE COUNTY

CURVE DATA
 $\Delta = 8^{\circ}43'02''$ RT.
 $D = 4^{\circ}46'29''$
 $T = 91.46'$
 $L = 182.58'$
 P.I. STA. = 105+00 LINE "A"



TBM #3 BENCH TIE SPIKE SET 1' UP IN THE NORTH FACE OF A POWER POLE ON THE SOUTH SIDE OF SR 65 AND WEST OF HARDIN CREEK, N: 341733, E: 752875, EL. 444.42

<p>103 NORTH: 341710.9465 EAST: 752705.8865</p> <p>Primary Control</p>	<p>104 NORTH: 341867.3303 EAST: 753045.9841</p> <p>Primary Control</p>	<p>105 NORTH: 341957.1012 EAST: 753513.7034</p> <p>Primary Control</p>	<p>500 NORTH: 341622.0468 EAST: 752565.7544</p> <p>P.O.T. 100+00.00 LINE "A"</p>	<p>501 NORTH: 341831.3611 EAST: 753019.8332</p> <p>P.O.T. 105+00.00 LINE "A"</p>	<p>502 NORTH: 341969.4371 EAST: 753590.3901</p> <p>P.O.T. 110+00.00 LINE "A"</p>
--	--	--	--	--	--

NOTE TO REVIEWER
 PROPOSED DITCHES WILL BE
 ADDED PRIOR TO THE
 PRELIMINARY FIELD CHECK.

DRAFT
 NOT FOR CONSTRUCTION

RECOMMENDED FOR APPROVAL	DESIGN ENGINEER	DATE
DESIGNED: JAM	DRAWN: JAM	
CHECKED: ALR	CHECKED: ENH	

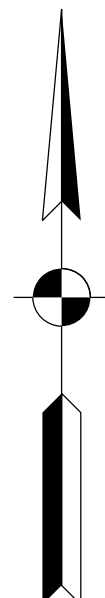
INDIANA
 DEPARTMENT OF TRANSPORTATION

PLAN AND PROFILE

SCALE 1" = 20'	BRIDGE FILE 065-63-10332
VERTICAL SCALE 1" = 10'	DESIGNATION 1700166
SURVEY BOOK ELECTRONIC	SHEETS 4 of 11
CONTRACT B-40553	PROJECT 1700166

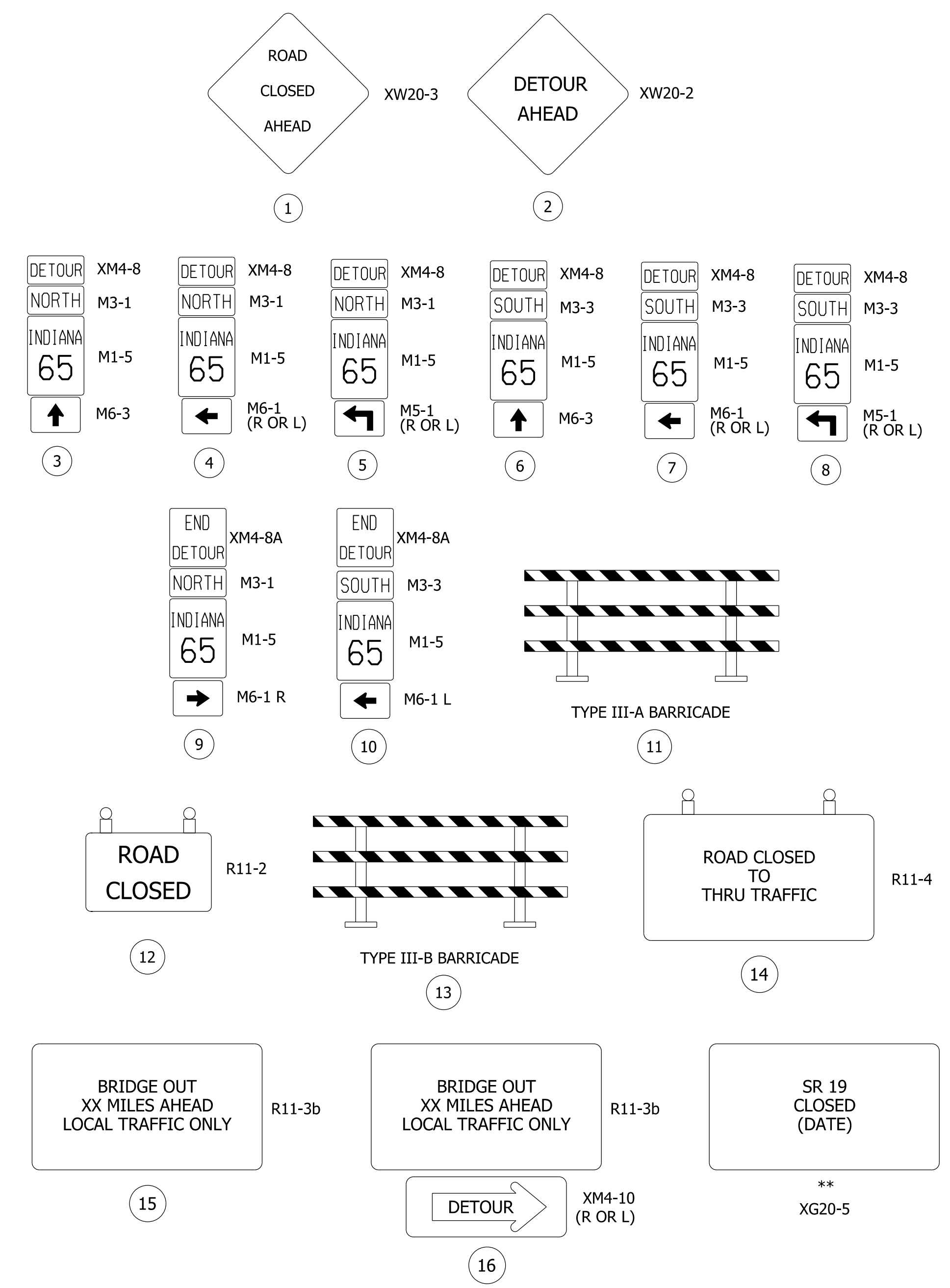
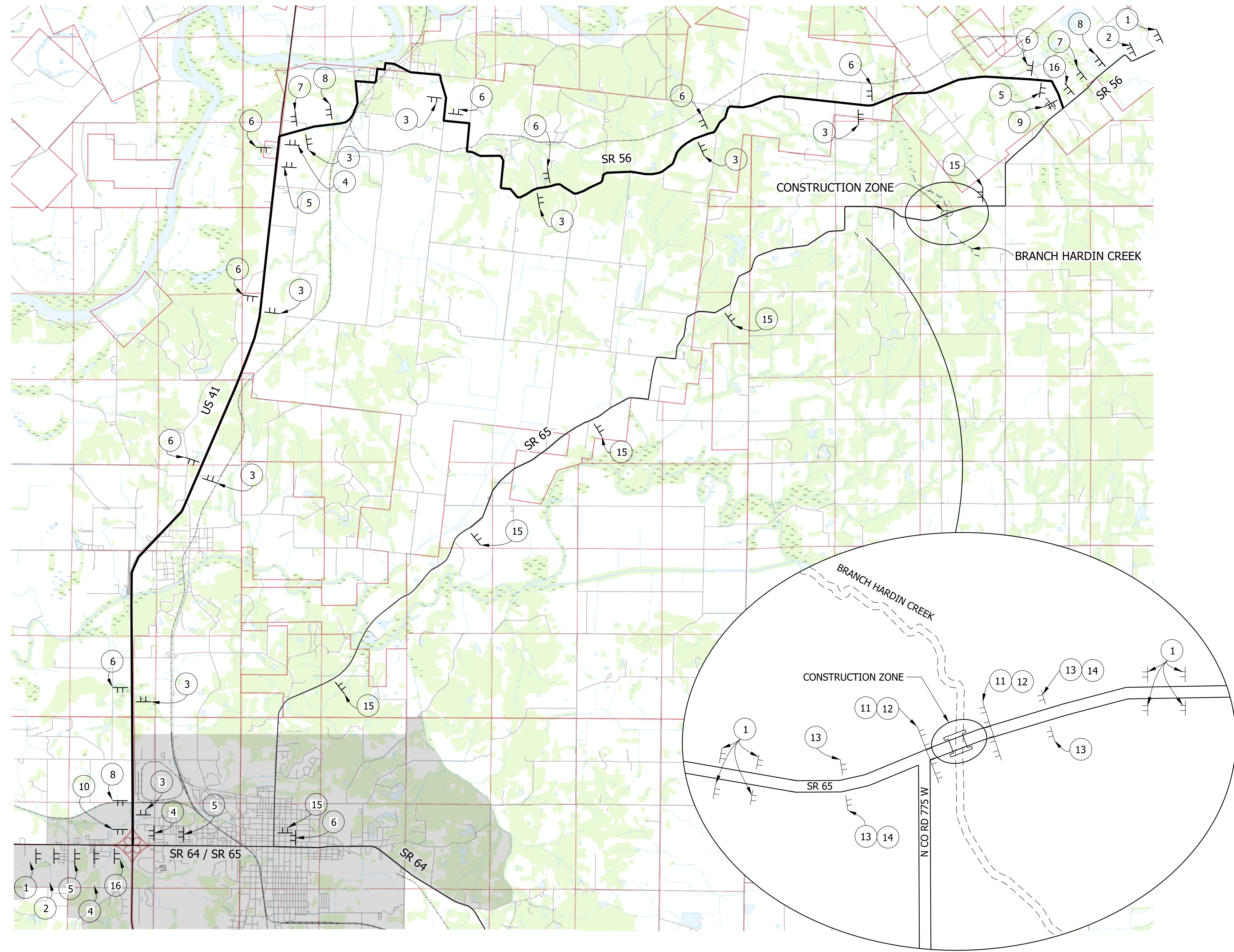
arectken
 9/6/2019 2:05:31 pm
 model: Plan and profile
 file: \\indiv001\289\projects\70946_indiv_v_2018_bridges\1090-s65-br-hardin_des\700166\cadd\cads\70946-s-dr-pp01.dgn

amatingwa
 3/30/2020 3:58:50 pm
 model: Maintenance of traffic details
 file: \\indiv001\289projects\70946_indiv_v_2018_bridges\1090-sr65_bhardin_des\700166\cadd\cads\70946-sr-mot01.dgn



MOT SUMMARY		
ITEM	UNITS	TOTALS
DETOUR ROUTE MARKER ASSEMBLIES	EA	33
CONSTRUCTION SIGN, A	EA	20
CONSTRUCTION SIGN, B	EA	2
ROAD CLOSURE SIGN ASSEMBLY	EA	6
BARRICADE, III-A	LFT	96
BARRICADE, III-B	LFT	96

** INCLUDES 2 XG20-5 ROUTE CLOSURE NOTICE SIGNS TO BE FIELD LOCATED BY ENGINEER.



LEGEND

URBAN AREA BOUNDARY

NOTES:

- ACCESS TO ALL PRIVATE DRIVES SHALL BE MAINTAINED DURING CONSTRUCTION. DRIVES ARE LOCATED AT VARIOUS LOCATIONS ALONG SR 65 WITHIN 1/2 MILE EAST AND WEST OF THE STRUCTURE.
- FOR ADDITIONAL INFORMATION ON DETOUR SIGN PLACEMENT, SEE STANDARD DRAWING E 801-TCDT-01 THRU E 801-TCDT-04.
- PUBLIC SCHOOLS, PUBLIC TRANSIT, EMERGENCY SERVICES, AND POSTAL SERVICES SHALL BE CONTACTED A MINIMUM OF 14 DAYS PRIOR TO BEGINNING CONSTRUCTION.

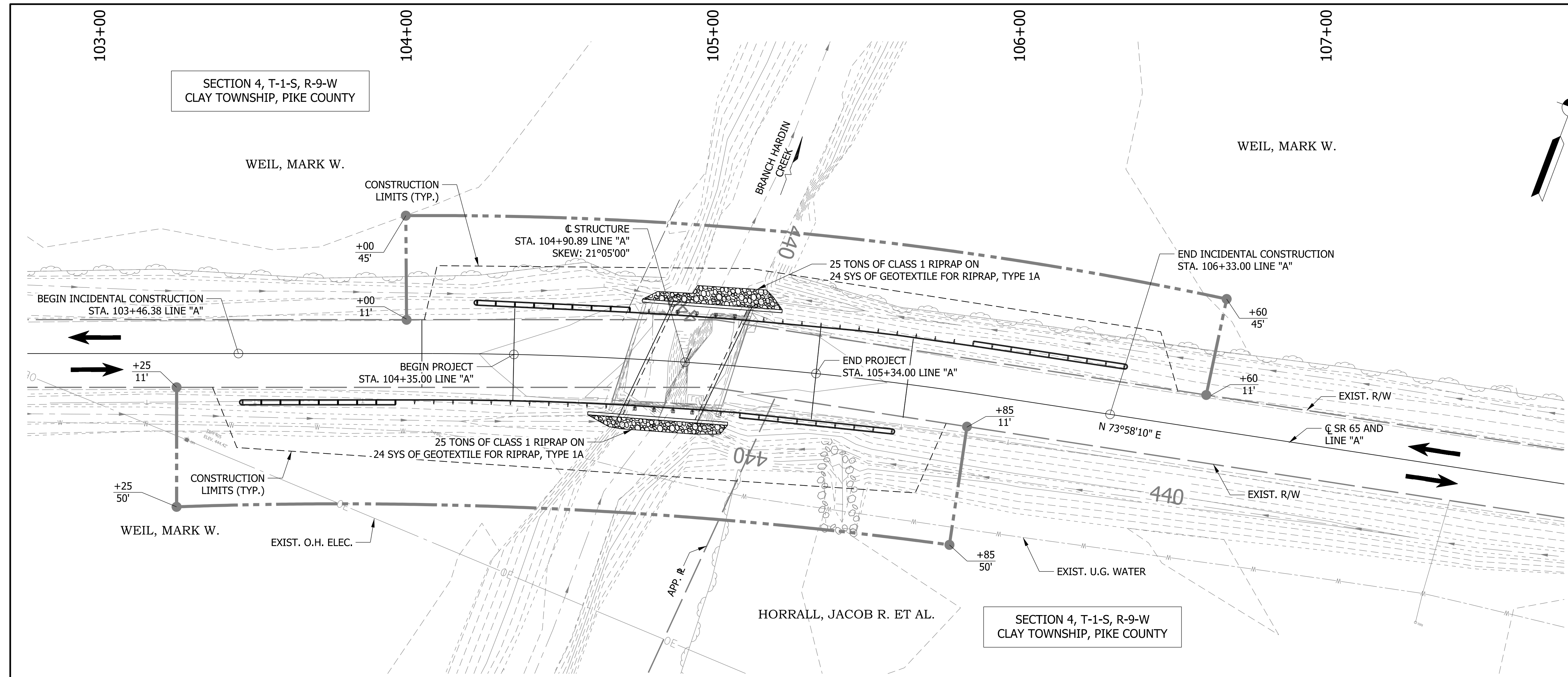
DRAFT
NOT FOR CONSTRUCTION

RECOMMENDED FOR APPROVAL _____	DESIGN ENGINEER _____	DATE _____
DESIGNED: CDC	DRAWN: JAM	
CHECKED: ENH	CHECKED: ENH	

INDIANA
DEPARTMENT OF TRANSPORTATION

MAINTENANCE OF TRAFFIC DETAILS

HORIZONTAL SCALE	BRIDGE FILE
N.T.S.	065-63-10332
VERTICAL SCALE	DESIGNATION
N.T.S.	1700166
SURVEY BOOK	SHEETS
ELECTRONIC	5 of 12
CONTRACT	PROJECT
B-40553	1700166



EXISTING STRUCTURE

THE EXISTING STRUCTURE IS A SINGLE SPAN PRESTRESSED CONCRETE BOX BEAM BRIDGE WITH AN OUT-TO-OUT LENGTH OF 36'-0" AND A CLEAR ROADWAY WIDTH OF 28'-6" (EXISTING STRUCTURE TO BE REMOVED)

HYDRAULIC DATA

WATERWAY OPENING REQUIRED	153 SFT
WATERWAY OPENING PROVIDED	154 SFT
DRAINAGE AREA	1.74 SQ MI
DESIGN DISCHARGE, Q100	1000 CFS
VELOCITY	3.92 FT/S
Q100 ELEV.	444.05 FT
BACKWATER AT Q100	0.65 FT
EXISTING WATERWAY OPENING	147 SFT
EXISTING BACKWATER	0.67 FT
MIN. LOW STRUCTURE ELEV. REQ.	443.70 FT
EXISTING LOW STRUCTURE ELEV.	443.70 FT

EARTHWORK TABULATION

FILL + 20%	CYS
COMMON EXCAVATION	CYS
USABLE WATERWAY EXCAVATION (70%)	CYS
SURPLUS FOUNDATION EXCAVATION (70%)	CYS
BORROW	CYS
TOTAL WATERWAY EXCAVATION	CYS
EXCAVATION UNCLASSIFIED	CYS
BENCHING (ESTIMATED)	CYS

NO DIRECT PAYMENT FOR BENCHING. BENCHING WILL NOT BE PAID FOR AS COMMON EXCAVATION.

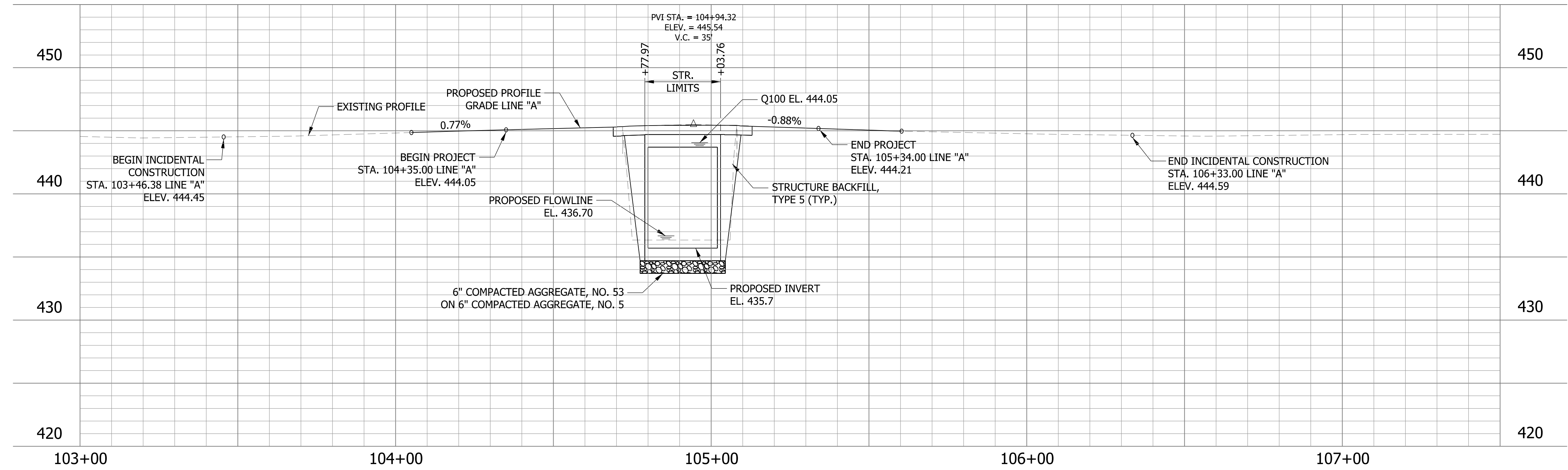
NOTE TO REVIEWER

CHANNEL CLEARING AND OHWM ELEVATIONS WILL BE PROVIDED IN A FUTURE SUBMITTAL AFTER THE WATERS REPORT HAS BEEN COMPLETED.

NOTE TO REVIEWER

EARTHWORK QUANTITIES WILL BE PROVIDED IN A FUTURE SUBMITTAL

REINFORCED CONCRETE BOX CULVERT
 1 SPAN: 22'-0"
 SKEW: 21°05'00" RT.
 30'-0" CLEAR ROADWAY
 SR 65 OVER BRANCH HARDIN CREEK
 PIKE COUNTY



DRAFT
NOT FOR CONSTRUCTION

RECOMMENDED FOR APPROVAL	DESIGN ENGINEER	DATE
DESIGNED: ALR	DRAWN: ALR	
CHECKED: ENH	CHECKED: ENH	

INDIANA
DEPARTMENT OF TRANSPORTATION

LAYOUT

HORIZONTAL SCALE	BRIDGE FILE
1"=20'-0"	065-63-10332
VERTICAL SCALE	DESIGNATION
1"=5'-0"	1700166
SURVEY BOOK	SHEETS
ELECTRONIC	6 of 12
CONTRACT	PROJECT
B-40553	1700166

ehaas
 3/10/2020 7:06:39 pm
 model: Layout
 file: \\indiv001\289projects\70946_indiv-v_2018_bridges\1090-sr65-brhardin_cds\700166\cadd\cadd\70946-sr-br-hardin.dgn

GENERAL NOTES

PLANS FOR THE EXISTING BRIDGE ARE ON FILE IN THE RECORDS UNIT OF THE INDIANA DEPARTMENT OF TRANSPORTATION AS BRIDGE FILE 065-63-6288 B.

FOOTING DIMENSIONS SHALL BE DETERMINED BY THE PRECAST UNIT MANUFACTURER.

ALL PAVEMENT MARKINGS DISTURBED DURING CONSTRUCTION SHALL BE REPLACED IN KIND.

ALL DIMENSIONS AND ELEVATIONS ARE IN FEET (FT) UNLESS OTHERWISE NOTED.

MAXIMUM NOMINAL SOIL BEARING RESISTANCE = XXX PSF.

CONTRACTOR SHALL NOT USE BROKEN CONCRETE IN PLACE OF RIPRAP.

DESIGN DATA

LIVE LOAD
STRUCTURE SHALL BE DESIGNED FOR HL-93 LOADING IN ACCORDANCE WITH AASHTO LRFD BRIDGE DESIGN SPECIFICATIONS, 8TH EDITION, 2017, AND ITS SUBSEQUENT ITERIMS.

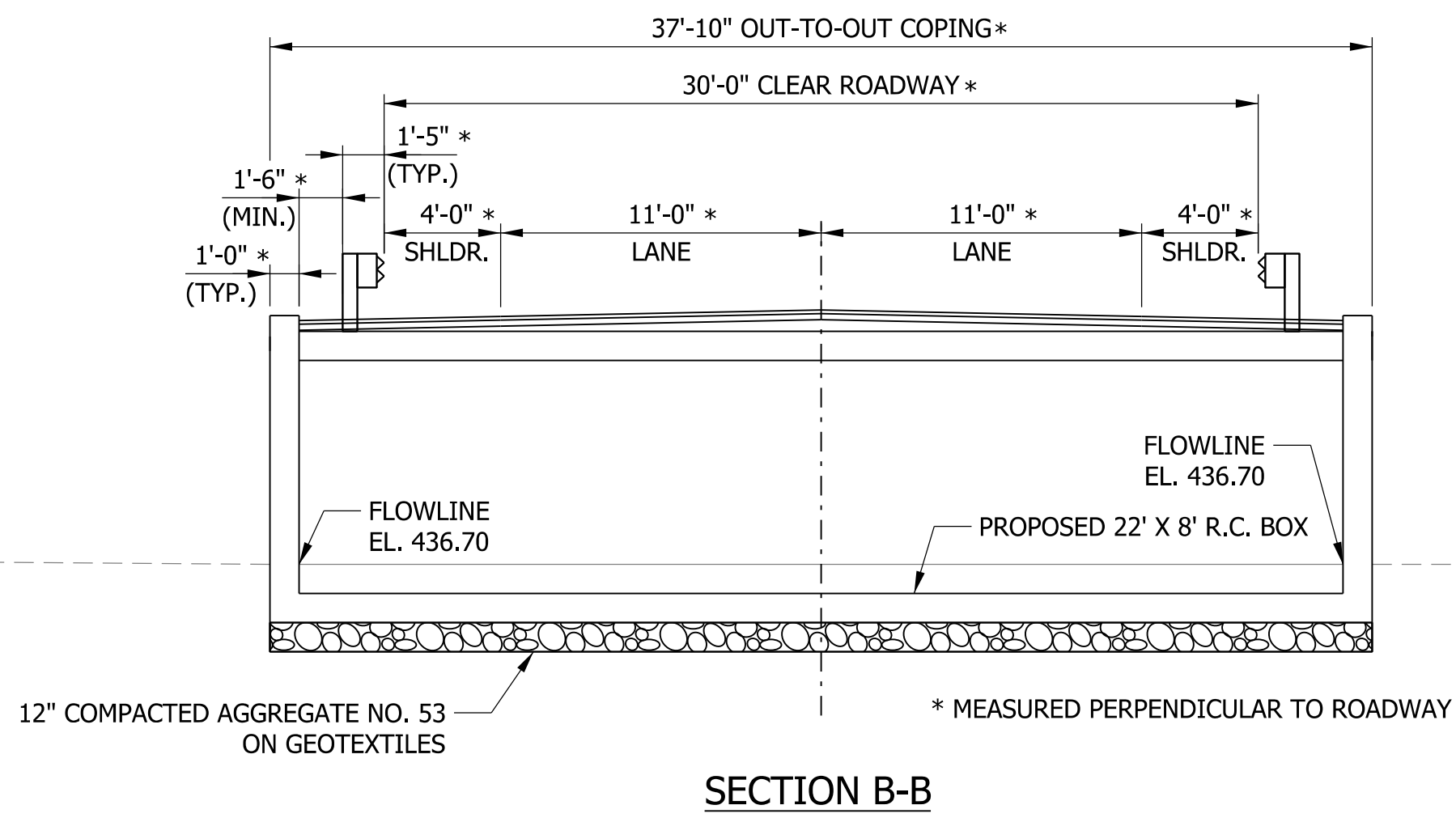
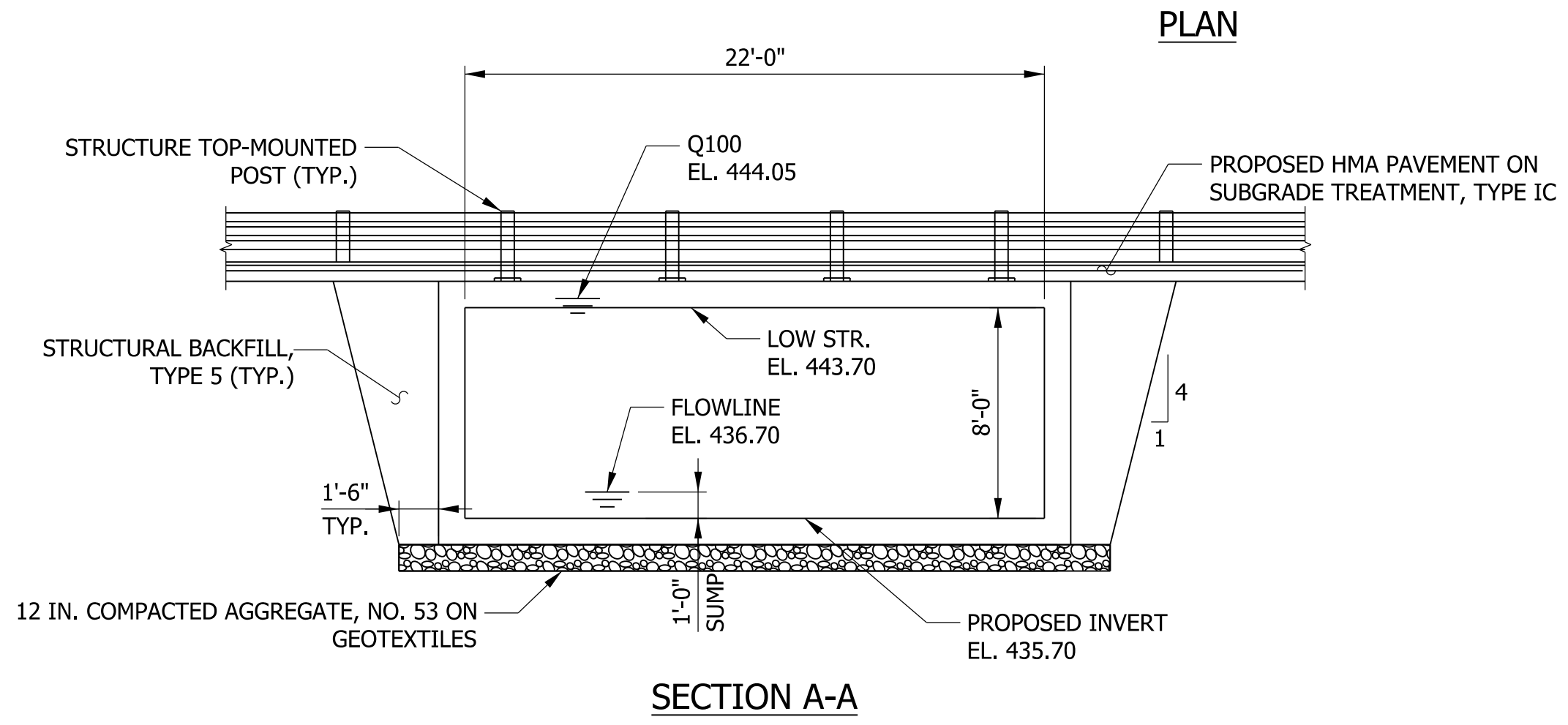
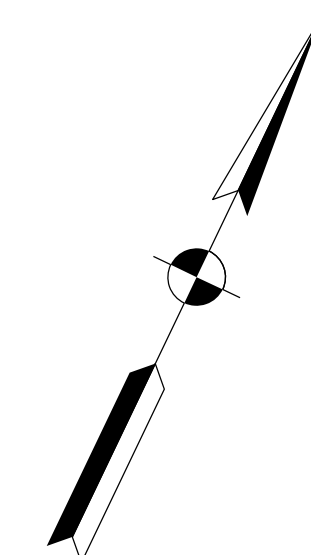
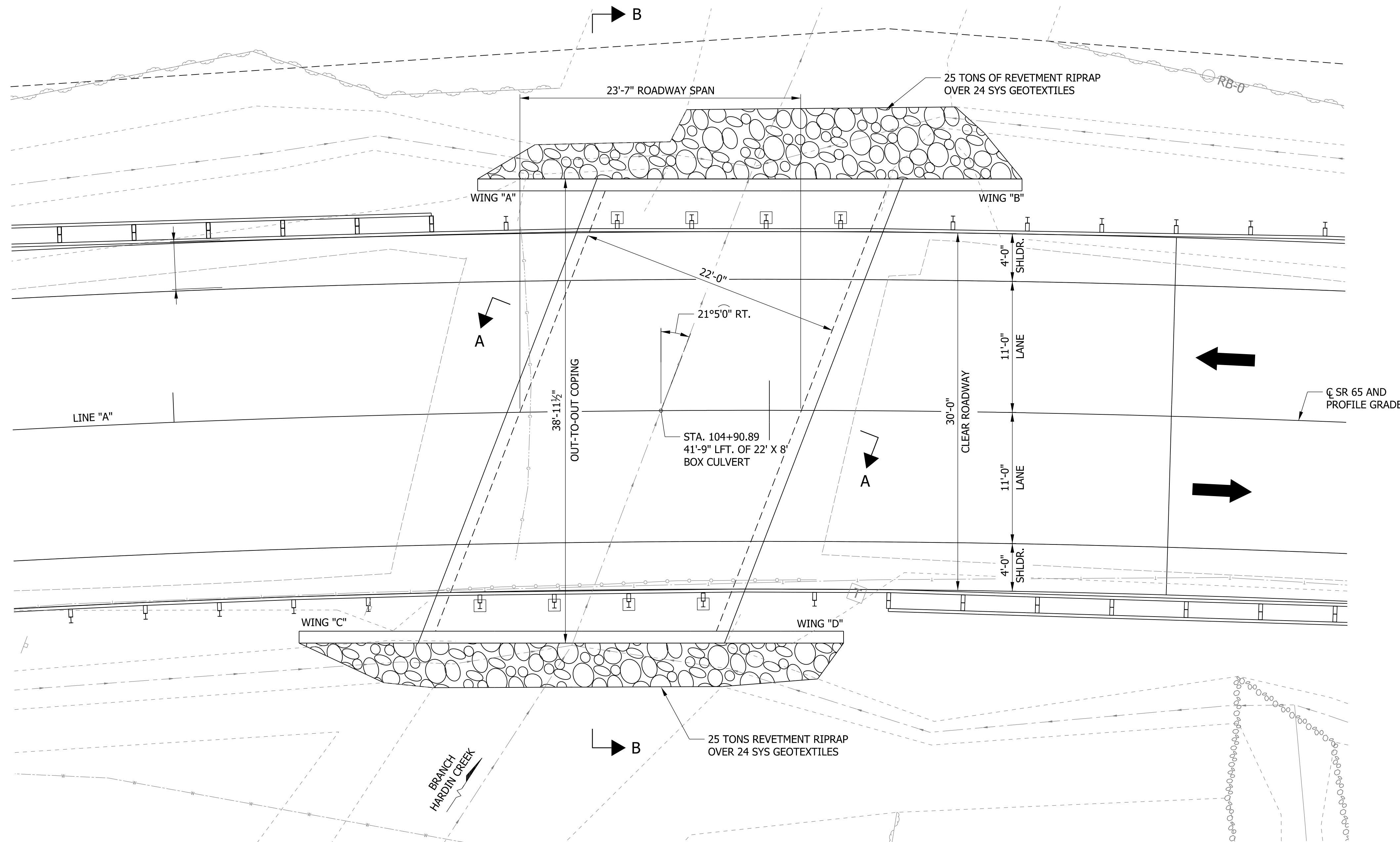
DEAD LOAD
DESIGNED FOR ACTUAL DEAD LOAD PLUS 35 PSF OF FUTURE WEARING SURFACE.

SEISMIC DESIGN DATA

SEISMIC PERFORMANCE ZONE = XX
ACCELERATION COEFFICIENT = XX
SEISMIC SOIL PROFILE TYPE = XX

DESIGN STRENGTHS

THE MINIMUM DESIGN CONCRETE COMPRESSIVE STRENGTH FOR STRUCTURE SECTIONS SHALL BE 5000 PSI. FOR WINGWALLS AND HEADWALLS, IT SHALL BE 4000 PSI.



REINFORCED CONCRETE BOX CULVERT
1 SPAN: 22'-0"
SKEW: 21°05'00" RT.
30'-0" CLEAR ROADWAY
SR 65 OVER BRANCH HARDIN CREEK
PIKE COUNTY

NOTE TO REVIEWER
MATERIAL PLACED UNDER THE REINFORCED CONCRETE BOX WILL BE CONFIRMED AFTER GEOTECHNICAL REPORT IS COMPLETE.

NOTE TO REVIEWER
WINGWALL LENGTHS SHOWN ARE APPROXIMATE AND WILL BE DETERMINED AT THE NEXT SUBMITTAL.

DRAFT
NOT FOR CONSTRUCTION

RECOMMENDED FOR APPROVAL	DESIGN ENGINEER	DATE
DESIGNED: JAM	DRAWN: JAM	
CHECKED: ALR	CHECKED: ENH	

INDIANA DEPARTMENT OF TRANSPORTATION
GENERAL PLAN

HORIZONTAL SCALE	BRIDGE FILE
3/8" = 1'-0"	065-63-10332
VERTICAL SCALE	DESIGNATION
3/8" = 1'-0"	1700166
SURVEY BOOK	SHEETS
ELECTRONIC	7 of 12
CONTRACT	PROJECT
B-40553	1700166

amatungwa
 3/30/2020 4:07:59 pm
 model: General plan
 file: \\invtv001\289\projects\70946_indor\2018_bridges\1090-sr65_bhardin_dcs\700166\cadd\cads\70946-sr-phn01.dgn

SUMMARY OF BRIDGE QUANTITIES

ITEM	PAVEMENT REMOVAL	PRESENT STRUCTURE, REMOVE PORTIONS	EXCAVATION, COMMON	SUBBASE FOR PCCP, MODIFIED	DENSE GRADED SUBBASE	MILLING, ASPHALT, 1 1/2 IN.	CC/OA-HMA, 4, 70, SURFACE, 9.5 MM	JOINT ADHESIVE, SURFACE	LIQUID ASPHALT SEALANT	ASPHALT FOR TACK COAT	RETROFITTED TIE BARS	TERMINAL JOINT	PCCP PATCHING, FULL DEPTH	GUARDRAIL, REMOVE	GUARDRAIL MGS W-BEAM, 6 FT 3 IN SPACING	GUARDRAIL MGS W-BEAM, DOUBLE FACED 6 FT 3 IN SPACING	GUARDRAIL MGS TRANSITION WITHOUT CURB	GUARDRAIL, END TREATMENT, OS	GUARDRAIL, END TREATMENT, MS	BARRIER, DELINEATORS	MILLED HMA CORRUGATIONS	REINFORCED CONCRETE BRIDGE APPROACH, 12 IN	MOBILIZATION AND DEMOBILIZATION FOR SEEDING	MULCHED SEEDING, U	FIELD DRILLED HOLE IN CONCRETE	REINFORCING BARS, EPOXY COATED	CONCRETE, C, SUPERSTRUCTURE	RAILING, CONCRETE, FC	CONCRETE BRIDGE RAILING TRANSITION, T/C	SURFACE SEAL*	PATCHING CONCRETE STRUCTURES	PIPE, TYPE 4, CIRCULAR 6 IN	GEOTEXTILES FOR UNDERDRAINS, TYPE 1A	AGGREGATE FOR UNDERDRAINS	BRIDGE DECK OVERLAY	
	SYS	LS	CYS	CYS	CYS	SYS	TONS	LFT	LFT	SYS	EACH	LFT	SYS	LFT	LFT	LFT	EACH	EACH	EACH	EACH	LFT	SYS	EACH	SYS	EACH	LBS	CYS	LFT	EACH	SFT	SFT	LFT	SYS	CYS	SYS	
TOTAL	0	0	0	0	0	0	0	0	0	0	0	0	0	0	0	0	0	0	0	0	0	0	0	0	0	0	0	0	0	0	0	0	0	0	0	0

* FOR INFORMATION ONLY. ESTIMATED QUANTITY PAID FOR AS LUMP SUM PER BRIDGE.

NOTE TO REVIEWER

SUMMARY TO BE COMPLETED FOR FUTURE SUBMISSIONS.

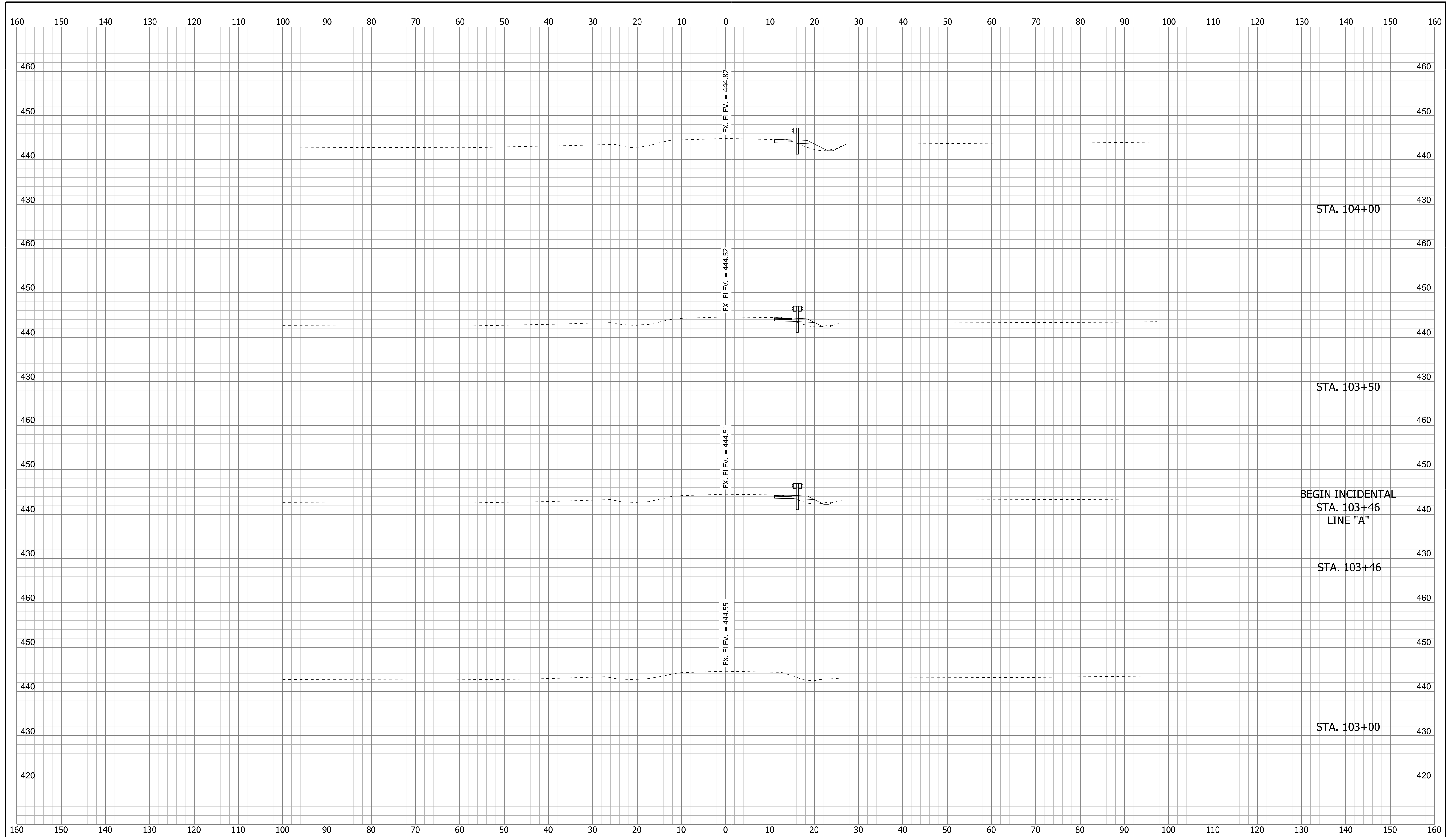
DRAFT
NOT FOR CONSTRUCTION

RECOMMENDED FOR APPROVAL _____	DESIGN ENGINEER _____	DATE _____
DESIGNED: ALR _____	DRAWN: ALR _____	
CHECKED: ENH _____	CHECKED: ENH _____	

INDIANA DEPARTMENT OF TRANSPORTATION

BRIDGE SUMMARY

HORIZONTAL SCALE	BRIDGE FILE
N/A	065-63-10332
VERTICAL SCALE	DESIGNATION
N/A	1700166
SURVEY BOOK	SHEETS
ELECTRONIC	8 of 12
CONTRACT	PROJECT
B-40553	1700166



NOTE TO REVIEWER
 SIDESLOPE CALLOUTS TO BE INCLUDED
 IN A FUTURE SUBMITTAL, PENDING
 SPECIAL DITCH PROFILE DESIGN.

NOTE TO REVIEWER
 BENCHING, PROPOSED AND
 EXISTING ROW, AND DRIVES WILL
 BE ADDED IN FUTURE SUBMITTALS.

NOTE TO REVIEWER
 CUT AND FILL AREAS
 AND VOLUMES WILL BE ADDED
 IN FUTURE SUBMITTALS.

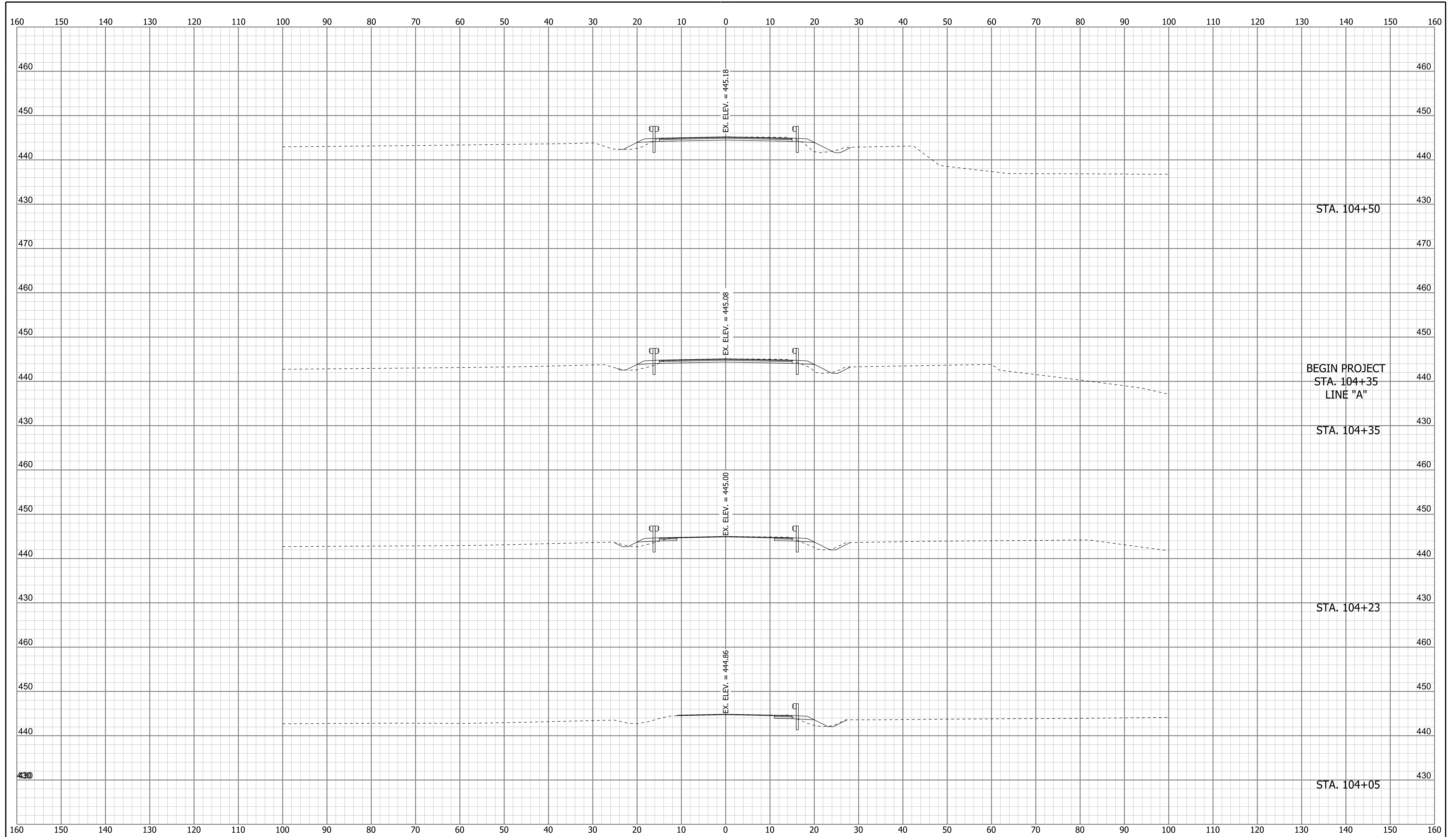
DRAFT
 NOT FOR CONSTRUCTION

RECOMMENDED FOR APPROVAL _____	DESIGN ENGINEER _____	DATE _____
DESIGNED: _____ NIK _____	DRAWN: _____ NIK _____	
CHECKED: _____ ALR _____	CHECKED: _____ ALR _____	

INDIANA
 DEPARTMENT OF TRANSPORTATION

**CROSS SECTIONS
 LINE "A"**

HORIZONTAL SCALE 1" = 10'	BRIDGE FILE 065-63-10332
VERTICAL SCALE 1" = 10'	DESIGNATION 1700166
SURVEY BOOK ELECTRONIC	SHEETS 9 of 12
CONTRACT B-40553	PROJECT 1700166



NOTE TO REVIEWER
 SIDESLOPE CALLOUTS TO BE INCLUDED
 IN A FUTURE SUBMITTAL, PENDING
 SPECIAL DITCH PROFILE DESIGN.

NOTE TO REVIEWER
 BENCHING, PROPOSED AND
 EXISTING ROW, AND DRIVES WILL
 BE ADDED IN FUTURE SUBMITTALS.

NOTE TO REVIEWER
 CUT AND FILL AREAS
 AND VOLUMES WILL BE ADDED
 IN FUTURE SUBMITTALS.

DRAFT
 NOT FOR CONSTRUCTION

RECOMMENDED FOR APPROVAL _____ DESIGN ENGINEER _____ DATE _____

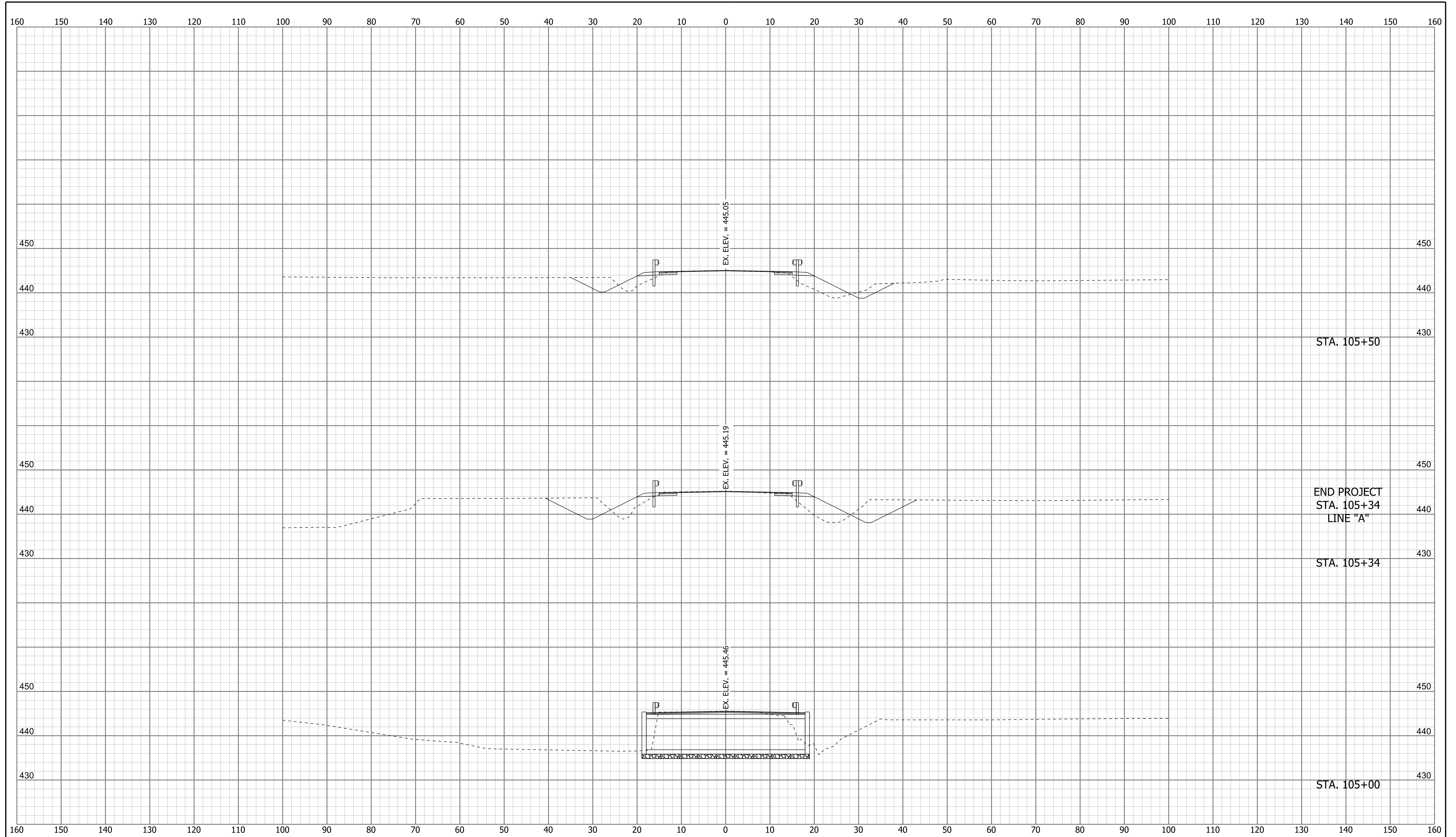
DESIGNED: _____ NIK _____ DRAWN: _____ NIK _____

CHECKED: _____ ALR _____ CHECKED: _____ ALR _____

INDIANA
 DEPARTMENT OF TRANSPORTATION

**CROSS SECTIONS
 LINE "A"**

HORIZONTAL SCALE 1" = 10'	BRIDGE FILE 065-63-10332
VERTICAL SCALE 1" = 10'	DESIGNATION 1700166
SURVEY BOOK ELECTRONIC	SHEETS 10 of 12
CONTRACT B-40553	PROJECT 1700166



NOTE TO REVIEWER
 SIDESLOPE CALLOUTS TO BE INCLUDED IN A FUTURE SUBMITTAL, PENDING SPECIAL DITCH PROFILE DESIGN.

NOTE TO REVIEWER
 BENCHING, PROPOSED AND EXISTING ROW, AND DRIVES WILL BE ADDED IN FUTURE SUBMITTALS.

NOTE TO REVIEWER
 CUT AND FILL AREAS AND VOLUMES WILL BE ADDED IN FUTURE SUBMITTALS.

DRAFT
 NOT FOR CONSTRUCTION

RECOMMENDED FOR APPROVAL _____ DESIGN ENGINEER _____ DATE _____

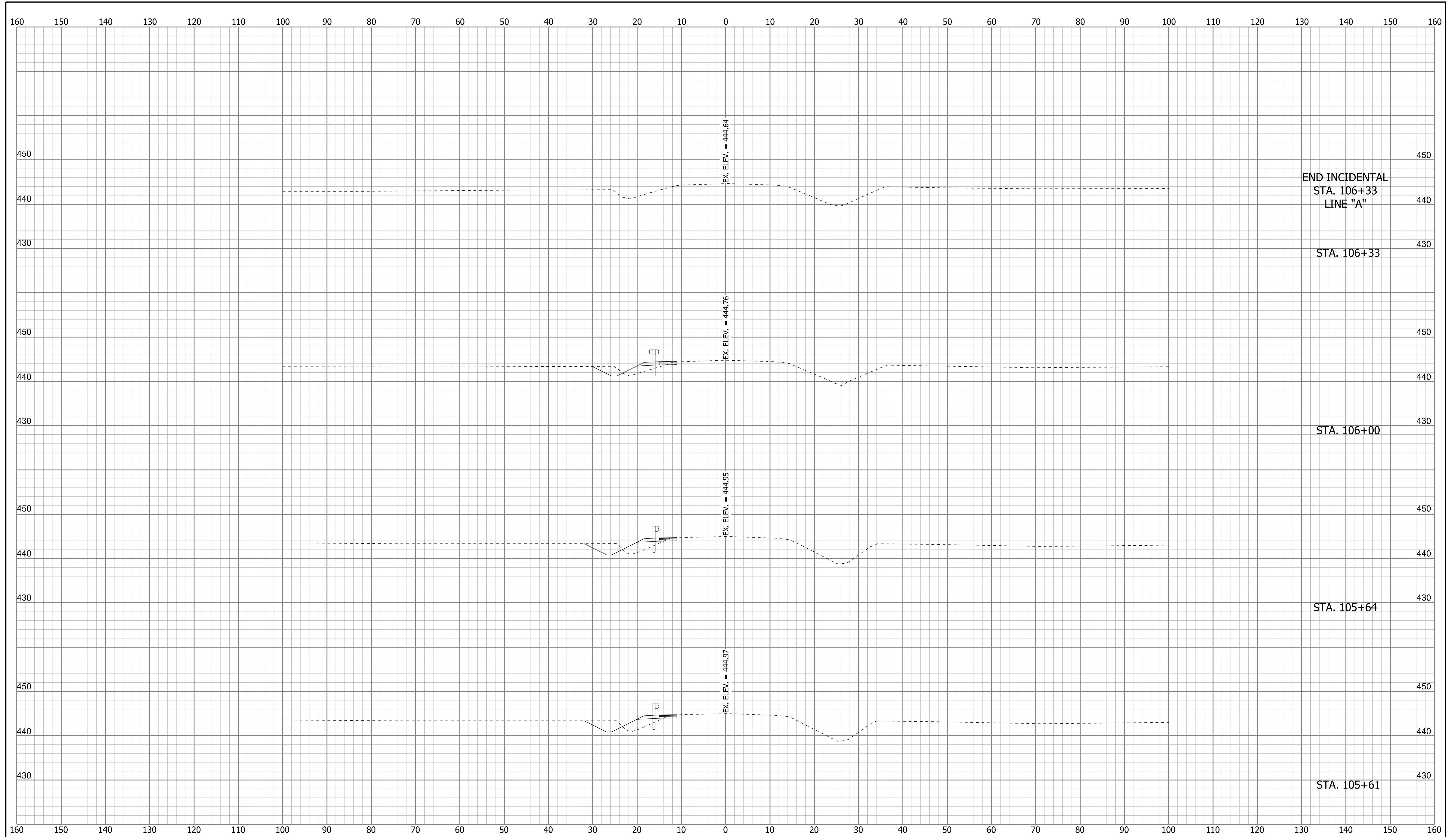
DESIGNED: _____ NIK _____ DRAWN: _____ NIK _____

CHECKED: _____ ALR _____ CHECKED: _____ ALR _____

INDIANA DEPARTMENT OF TRANSPORTATION

CROSS SECTIONS LINE "A"

HORIZONTAL SCALE 1" = 10'	BRIDGE FILE 065-63-10332
VERTICAL SCALE 1" = 10'	DESIGNATION 1700166
SURVEY BOOK ELECTRONIC	SHEETS 11 of 12
CONTRACT B-40553	PROJECT 1700166



NOTE TO REVIEWER
 SIDESLOPE CALLOUTS TO BE INCLUDED
 IN A FUTURE SUBMITTAL, PENDING
 SPECIAL DITCH PROFILE DESIGN.

NOTE TO REVIEWER
 BENCHING, PROPOSED AND
 EXISTING ROW, AND DRIVES WILL
 BE ADDED IN FUTURE SUBMITTALS.

NOTE TO REVIEWER
 CUT AND FILL AREAS
 AND VOLUMES WILL BE ADDED
 IN FUTURE SUBMITTALS.

DRAFT
 NOT FOR CONSTRUCTION

RECOMMENDED FOR APPROVAL _____	DESIGN ENGINEER _____	DATE _____
DESIGNED: NIK _____	DRAWN: NIK _____	
CHECKED: ALR _____	CHECKED: ALR _____	

INDIANA
 DEPARTMENT OF TRANSPORTATION

**CROSS SECTIONS
 LINE "A"**

HORIZONTAL SCALE 1" = 10'	BRIDGE FILE 065-63-10332
VERTICAL SCALE 1" = 10'	DESIGNATION 1700166
SURVEY BOOK ELECTRONIC	SHEETS 12 of 12
CONTRACT B-40553	PROJECT 1700166