

U.S. 20 Added Travel Lanes Project
0.8 mile east of C.R. 17 to S.R. 15 in Elkhart
County

Thursday, October 27, 2011

6:30pm Presentation

Northridge High School in Middlebury



WELCOME

- U.S. 20 Project Manager, Kenny Franklin
- Project Introduction / Opening Remarks
- Informal Q & A in project display area with project engineers and INDOT project officials prior to and following formal presentation and comment session
- Major Moves Construction Program



WELCOME

- Rickie Clark, INDOT Office of Public Involvement
- Purpose/Explanation of Public Hearing
- Public Hearing Format
- Visit our sign-in table
- Informational Handouts
- Submitting public comments for hearings transcript
- Project display area



Public Hearing

- Sign-in at attendance table to be added to project mailing list
- A public hearing notice was mailed to known property owners within project area
- Announcement of this hearing was posted to INDOT website. A media release was also issued
- Legal notice of public hearing published in Elkhart Truth on 10/11, 10/17 & 10/24; Middlebury Independent on 10/12, 10/19 & 10/26



INDOT Project Team

- Introduction of INDOT Project Officials
 - Project Management
 - Fort Wayne District
 - Real Estate
 - Public Involvement
- Design – Lawson-Fisher & Associates P.C.,
 - Environmental – Burgess & Niple
- Elkhart County / Local Municipalities
- Michiana Area Council of Governments (MACOG)
- Recognition of Elected Public Officials

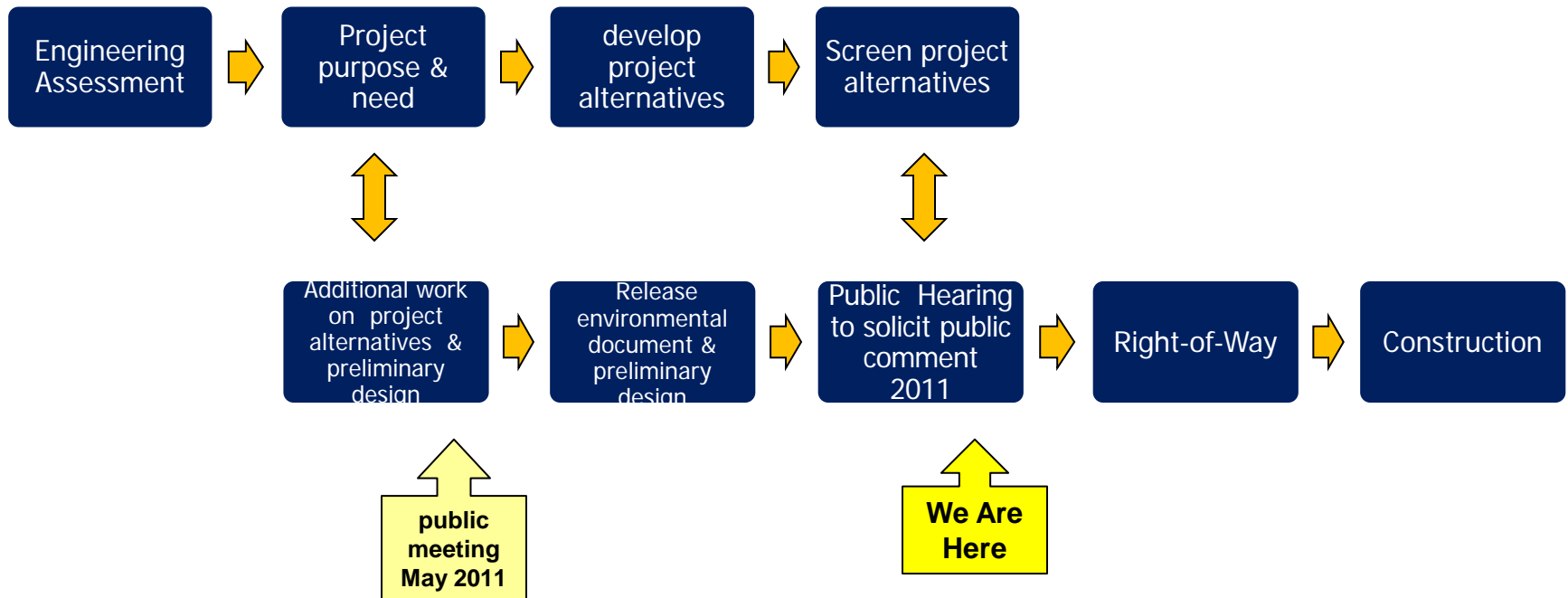


Project Stakeholders

- Indiana Department of Transportation
- Indiana Division Federal Highways Administration
- Michiana Area Council of Governments (MACOG)
- Elkhart County
- Local communities (Elkhart, Goshen, Bristol, Middlebury, others)
- Elected Public Officials
- Community residents and citizens
- Commuters
- Trucking industry



Project Development Process



Environmental Document

- Requirement of the National Environmental Policy Act (NEPA)
 - Requires INDOT to analyze and evaluate the impacts of a proposed project to the natural and socio-economic environments
 - Impacts are described in environmental document
 - Environmental document was released for public involvement September 2011



Environmental Document

- Development of document begins once purpose of need for the project has been clearly identified
- Develop a number of possible alternatives including a “Do Nothing” alternative as a baseline for comparison
- Screen alternatives to identify a preferred alternative
- Solicit public comment on environmental document and preliminary design plan
- Solicit, address, and fully consider public comments as part of decision making process



Elements of the Environmental Documentation

Relocations

Air Quality

Noise

Farmland

Hazardous Materials

Historic/Archaeological

Community Impacts

Wetlands and Waterways

Floodplains

Threatened and Endangered

Species



Environmental Document

- Middlebury Community Public Library, 101 East Winslow Street, Middlebury, Indiana 46540; PHONE (574) 825-5601
- INDOT Website at:
<http://www.in.gov/indot/2366.htm> “Public Involvement” page, select “US 20 Project Documents”

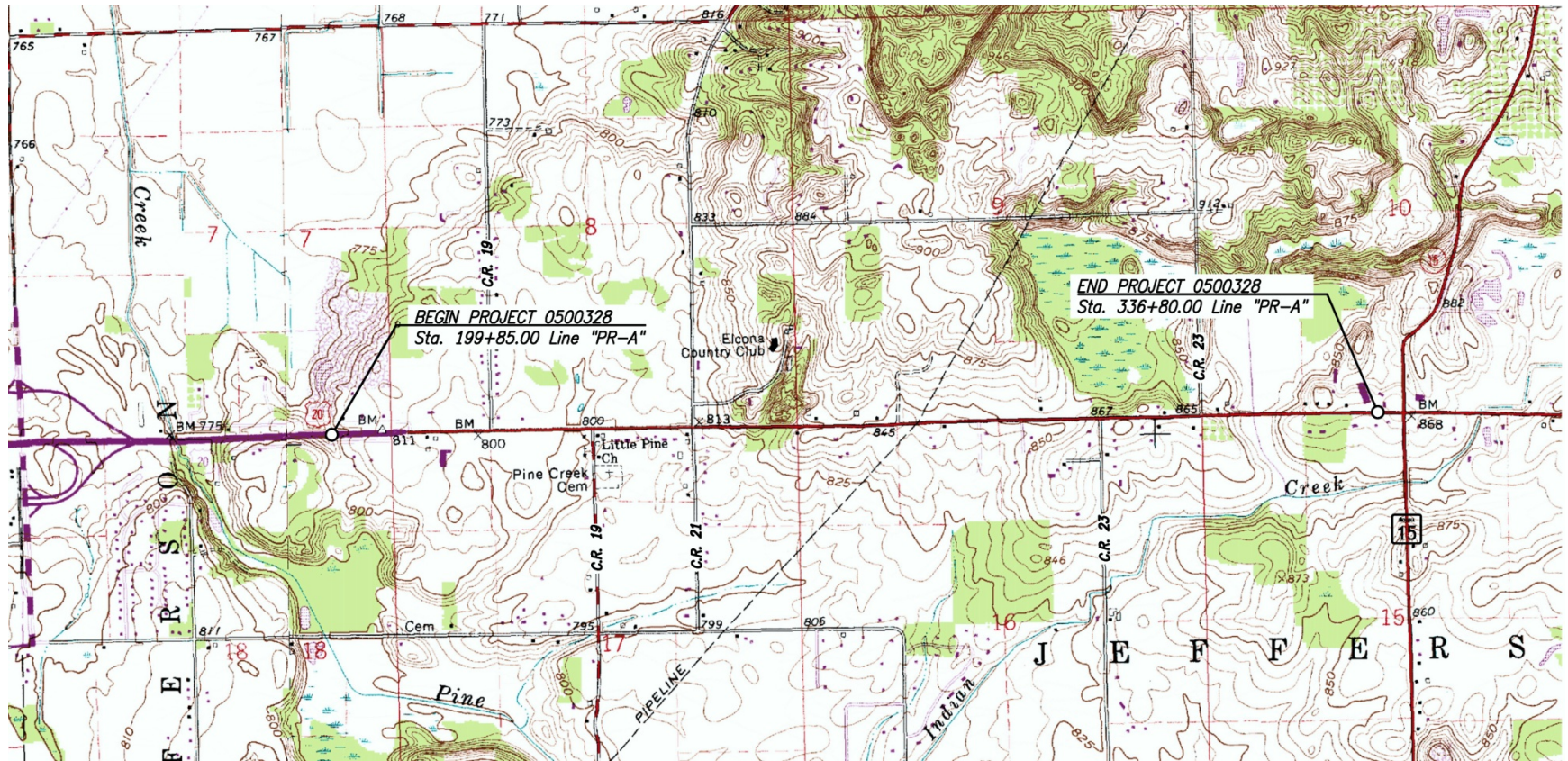


Location and Limits

- Project begins on East side of Elkhart approximately 0.75 miles East of CR 17
- Extends to S.R. 15 ending 300 ft West of the intersection



Location and Limits



Purpose and Need

- U.S. 20 is currently a two lane facility
- Posted Speed 50 mph
- Average Annual Daily Traffic (AADT)
- 2009 – 16,890 V.P.D. with 22% Trucks
- 2035 – 24,069 V.P.D.



Purpose and Need

- Indiana State Police Crash database indicates a high number of rear end crashes
- Travel demand models indicate continued increase in traffic
- Level of Service (LOS) improvements



Project Alternatives

- No Action / Do nothing alternative
- Construction/Reconstruction of 4 lane cross section with 16 ft flush median on existing alignment
- Construction/Reconstruction of 4 lane cross section with 16 ft flush median on new alignment
- Construction/Reconstruction of 4 lane divided highway with 30 ft grassed median on existing alignment



Project Description

- Enhance mobility by addressing existing and anticipated congestion/delay on U.S. 20
- Upgrade roadway to current standards
- Improve Roadside Safety
- Improvements to intersections for safer access



Project Description

- 4 lane cross section with 14 ft flush median
- 8 ft shoulders with sloped curb and gutter
- Or 10 ft shoulders with roadside ditches
- 14 ft flush median – center turn lane

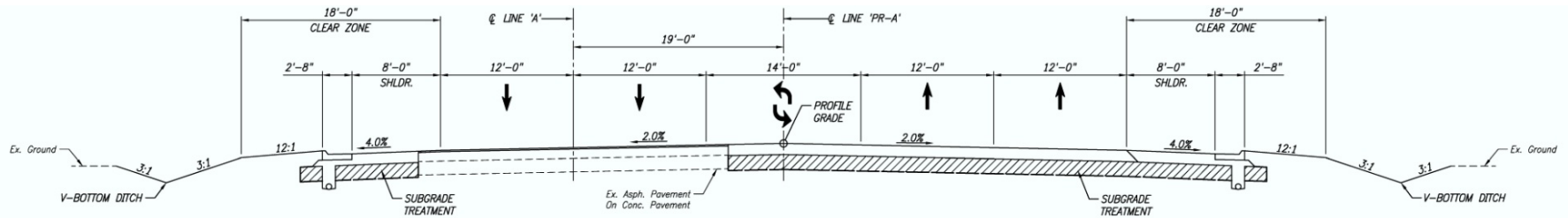


Typical Sections

- U.S. 20 Urban Section
 - 8 ft shoulder
 - Sloped concrete curb and gutter
 - Inlets and drainage structures
- U.S. 20 Rural Section
 - 10 ft shoulder
 - Roadside ditches



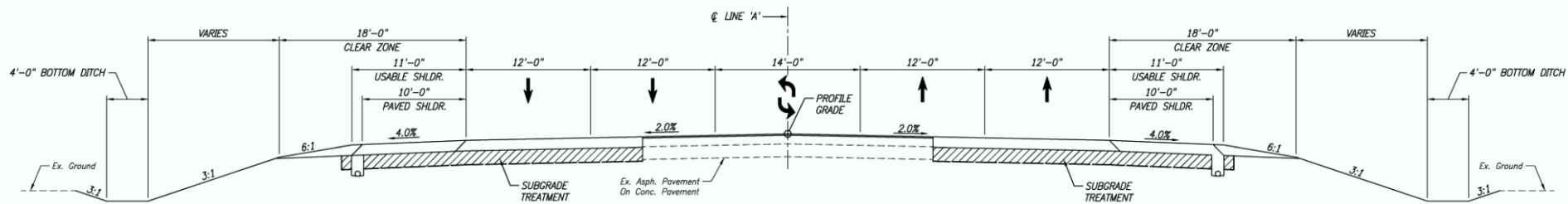
Typical Section



U.S. 20 TYPICAL URBAN SECTION

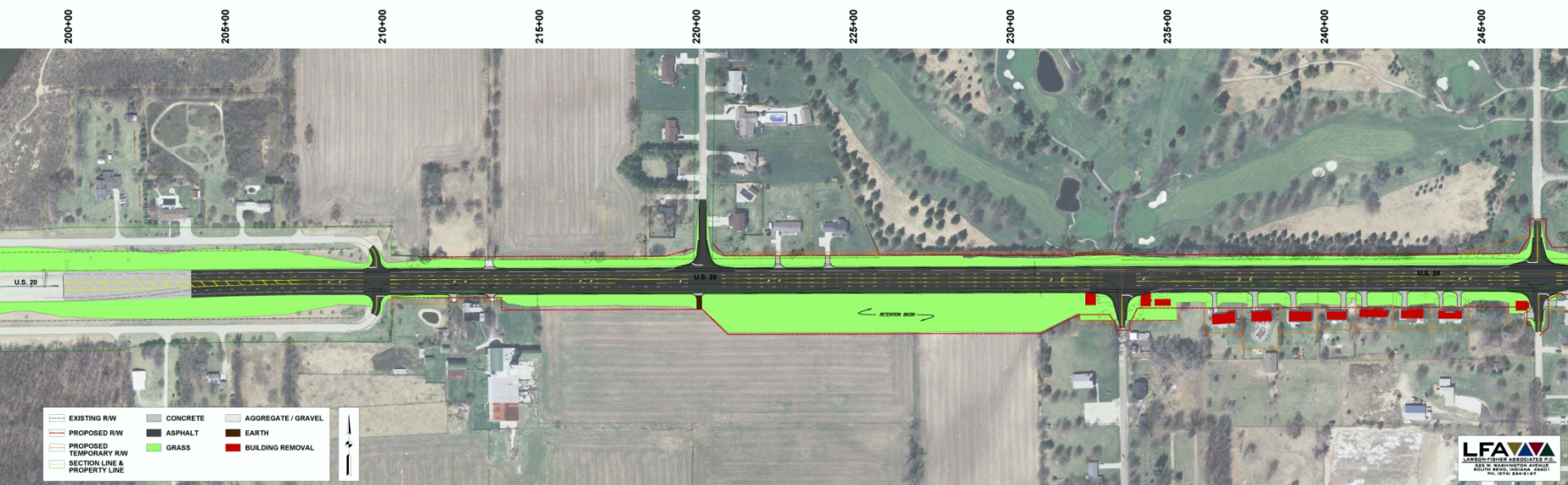


Typical Section



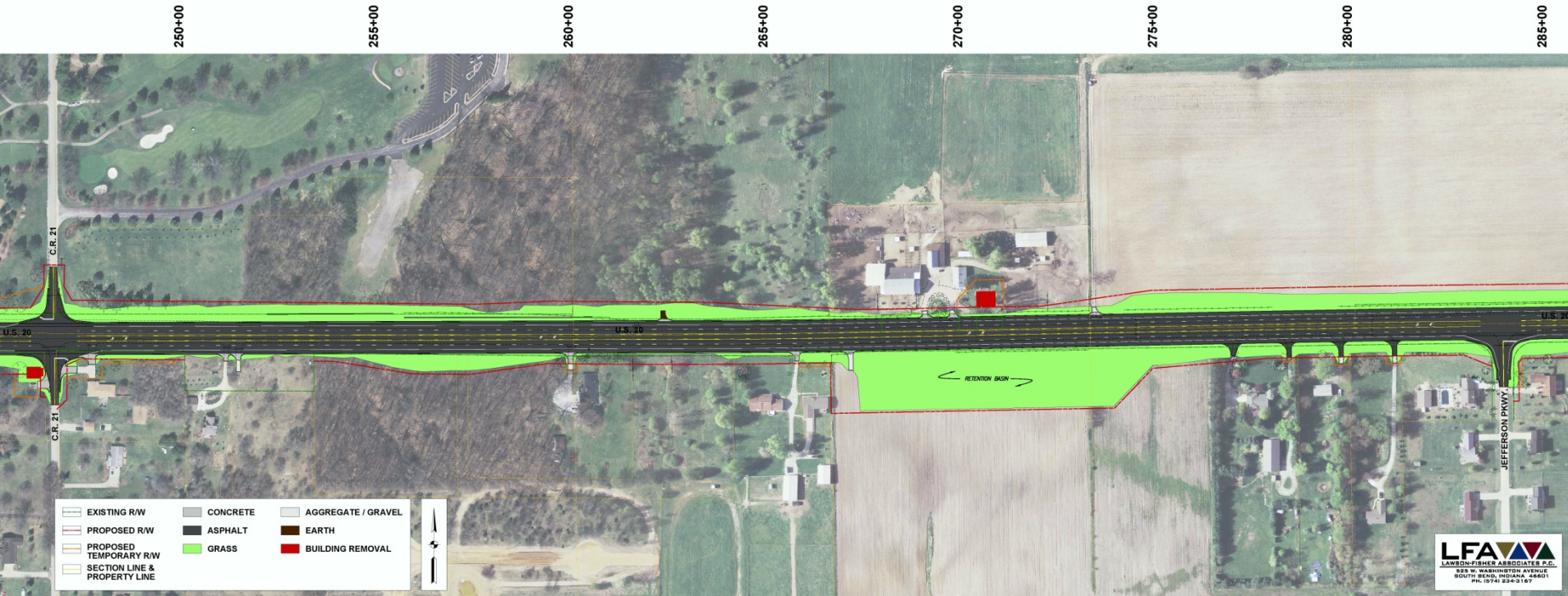
U.S. 20 TYPICAL RURAL SECTION





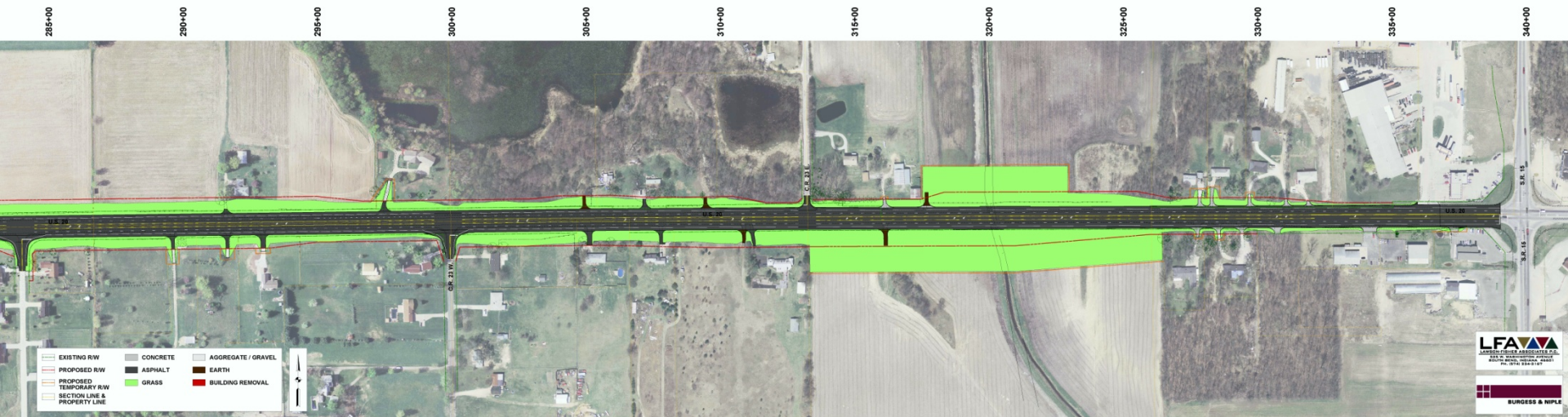
Project Overview

C.R. 21 to Jefferson Pkwy



Project Overview

Jefferson Pkwy to S.R. 15



Maintenance of Traffic

- Two Major Phases for Construction
- Open to through traffic through Construction



Maintenance of Traffic

- Advance Work Construction Activities
 - Asphalt widening at select areas
 - Culvert installations
 - Guardrail installations



Maintenance of Traffic

- Phase I Major Construction Activities
 - South portion roadway widening
 - South roadside ditch and basins
 - South driveway and public road approaches



Maintenance of Traffic

- Phase II Major Construction Activities
 - North portion of U.S. 20 construction
 - North roadside ditch and basins
 - North driveway and public road approaches

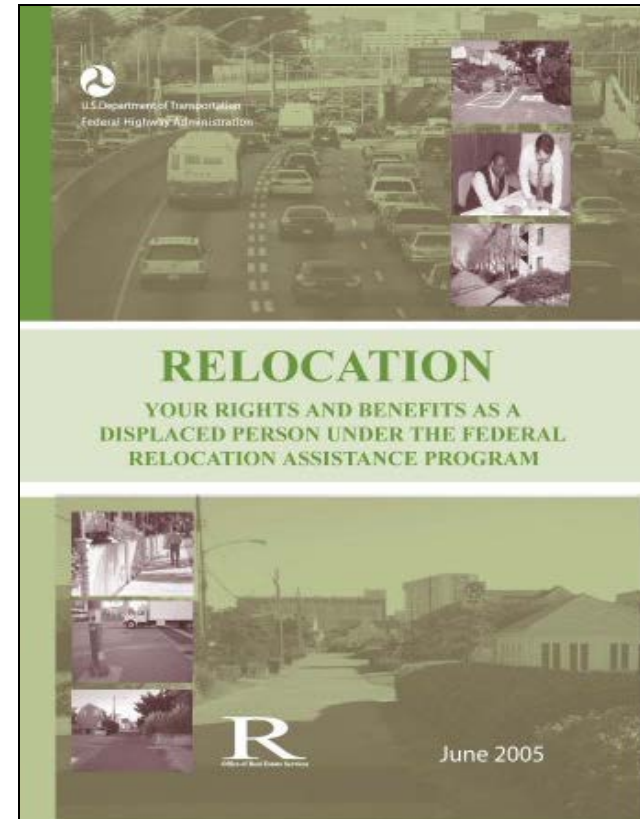
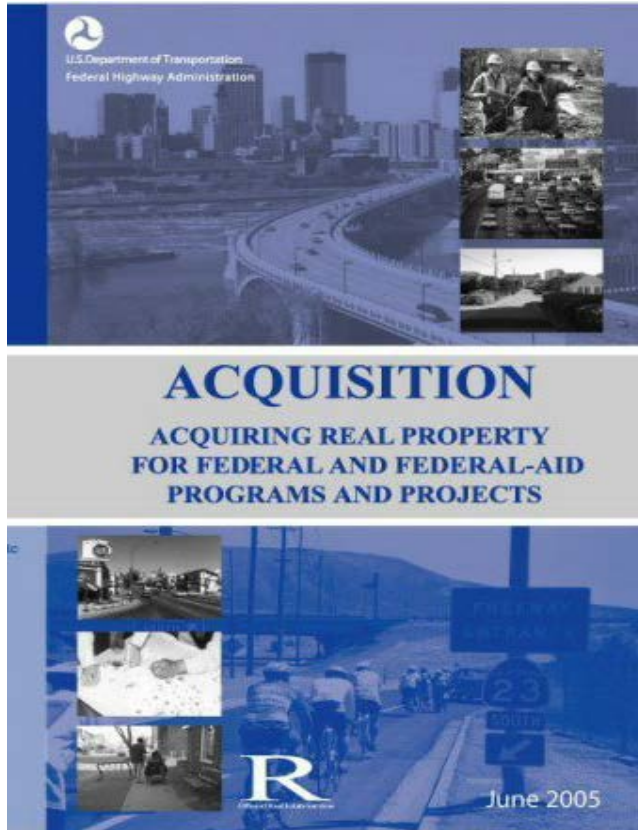


Maintenance of Traffic

- Post Phase II Construction Activities
 - Pavement surface course
 - Finalize Signing
 - Pavement markings



Real Estate Acquisition Process



Real Estate Acquisition Process

- Relocation Entitlement Program
 - Explains the process of relocation
- How Land Is Purchased
 - Explains the process of buying property needed for highway improvements



Real Estate Acquisition

Residential	7.4 Acres
Commercial	1.3 Acres
Agricultural	13.5 Acres
<u>Wooded</u>	<u>2.2 Acres</u>
Permanent R/W	24.4 Acres

- 24.4 acres permanent r/w with 50 parcels impacted
- 7.5 acres temporary r/w with 33 parcels impacted
- Project proposes 11 residential relocations
- R/W Estimates based on information available at this time.



Real Estate Acquisition Process

- **"Uniform Act of 1970"**
 - All federal, state, and local governments must comply
 - Requires an offer for just compensation
- **Acquisition Process**
 - Appraisals
 - Review Appraisals
 - Negotiations



Project Schedule & Cost

- Preliminary Engineering (2010)
- Initial project area survey work (2011)
- Project kick-off Public Meeting (May 2011)
- Project Design & Environmental Document (2011)
- Public Hearing (Fall 2011)
- Complete Environmental and Design Phases (late 2011 / early 2012)
- Real Estate Acquisition Activities (Winter/Spring 2012)
- Project Letting (advertised for bid) Winter 2013
- Anticipated Construction (Spring/Summer 2013)
- Anticipated Project Completion (Fall 2014)
- Estimated cost of project – \$14 million



INDOT would like to hear from you

- Talk with INDOT project team members
- Comment sheet in information packet
- E-mail or Mail comments to INDOT
- Sign-in sheet to be added to project mailing list
- Visit INDOT website at www.in.gov/indot/2366.htm
“Public Involvement” page
- All comments are very much appreciated and will be given full consideration by project team



Public Involvement Team

- Rickie Clark, INDOT Office of Public Involvement
(317) 232-6601 rclark@indot.in.gov
- Toni Mayo, Fort Wayne District Customer Service
Manager, (866) 227-3555 tmayo@indot.in.gov
- Kenny Franklin, US 20 Project Manager, (317) 232-
5007 kfranklin@indot.in.gov



Project Resource Location

- Fort Wayne District Office, 5333 Hatfield Road in Fort Wayne
- Responsible for transportation construction, maintenance and development activities in Northeast Indiana
- Neinformation@indot.in.gov 1-866-227-3555
- Bob Alderman, District Deputy Commissioner
 - Toni Mayo, Customer Service Manager / Media Relations Director
 - John Leckie, Planning & Production Director



Submit Public Comments

- Submit public comments using the options described in 1st page of information packet
 - Public Comment Form
 - Via e-mail
 - Participating during public comment session via microphone
 - Verbal comments recorded and transcribed for inclusion into to public hearings transcript
- **INDOT respectfully requests comments be submitted by Monday, November 14, 2011**
- All comments submitted will become part of public record, entered into transcript, reviewed, evaluated and given full consideration during decision making process



THANK YOU

- Please visit with INDOT project officials following the public comment session
- Project Open House
 - Project maps, displays, real estate acquisition table, INDOT project officials, informal Q & A
 - Thank you for your attendance this evening

