

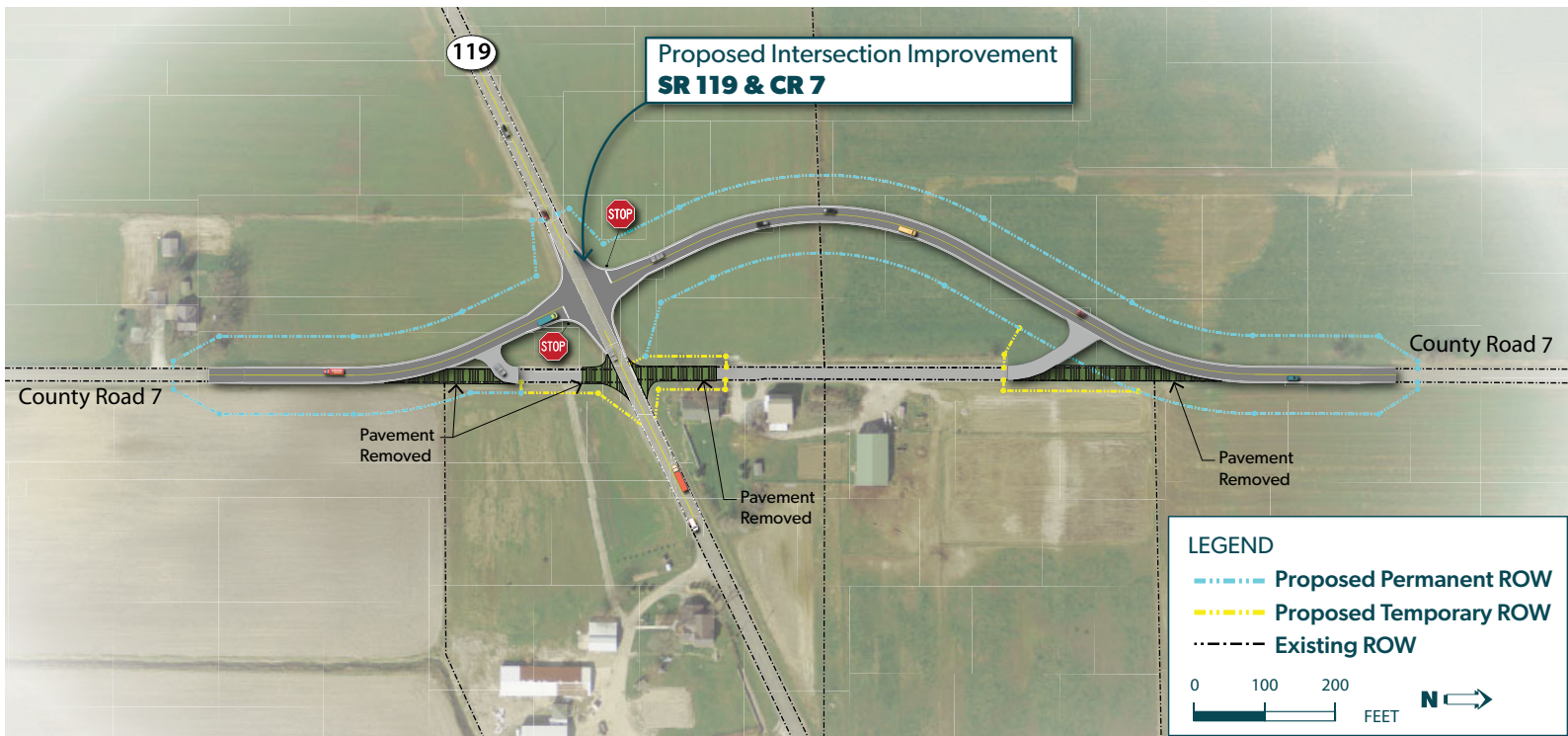


# SR 119 and CR 7 Intersection Improvement Project

Des No. 1800045

## PURPOSE:

Located in Elkhart County, this project will realign the existing intersection of SR 119 and CR 7 by eliminating the 65-degree skew, resulting in a 90-degree intersection reconstruction. This improvement is needed to reduce the frequency and severity of crashes at the SR 119 and CR 7 intersection.



## HAVE A QUESTION?



INDOT4U.com



855-INDOT4U  
855-463-6848

