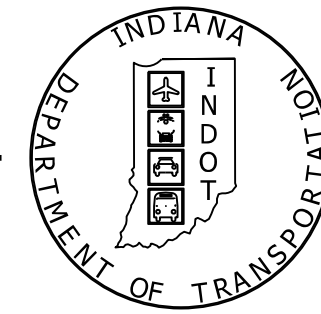


PROJECT	DESIGNATION
1700173	1700173
CONTRACT	BRIDGE FILE
B-40453	060-88-10268

INDIANA DEPARTMENT OF TRANSPORTATION



STRUCTURE	TYPE	SPAN AND SKEW	OVER	STATION
060-88-10268	CONTINUOUS PRESTRESSED CONCRETE 36X49 BULB-TEE BEAM	3 SPANS: 58'-0", 75'-0", 58'-0" SKEW: 15°00'00" RT.	SOUTH FORK BLUE RIVER	110+61.85 LINE "G"

KIN PROJECT INFORMATION		
DESIGNATION	DESCRIPTION	
1700173	SR 60 OVER SOUTH FORK BLUE RIVER	LEAD DES
1701449	SR 60 OVER MONEYS BRANCH	

BRIDGE PLANS

FOR SPANS OVER 20 FEET

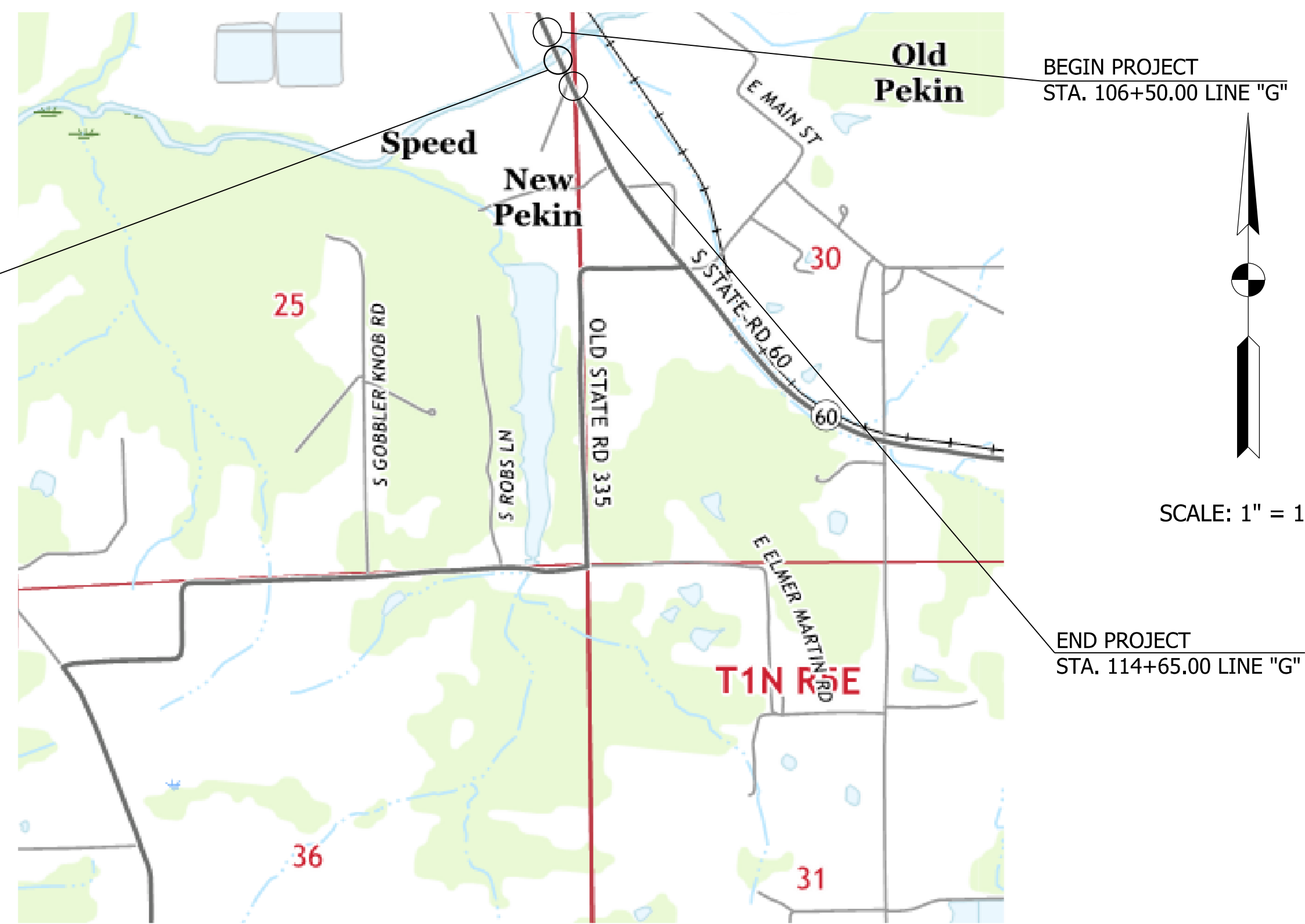
ROUTE: SR 60 AT: RP 42+62

PROJECT NO. 1700173 (P.E, CONST., R/W)

ADDITIONAL RIGHT-OF-WAY
REQUIRED FOR THIS PROJECT

BRIDGE REPLACEMENT ON SR 60 OVER SOUTH FORK BLUE RIVER, LOCATED APPROXIMATELY 0.42 MILES WEST OF SR 335, IN SECTION 25, T-1-N, R-4-E, PIERCE TOWNSHIP, WASHINGTON COUNTY, INDIANA

BRIDGE FILE NO. 060-88-10268
SR 60 OVER SOUTH FORK BLUE RIVER
STA. 110+61.85 LINE "G"

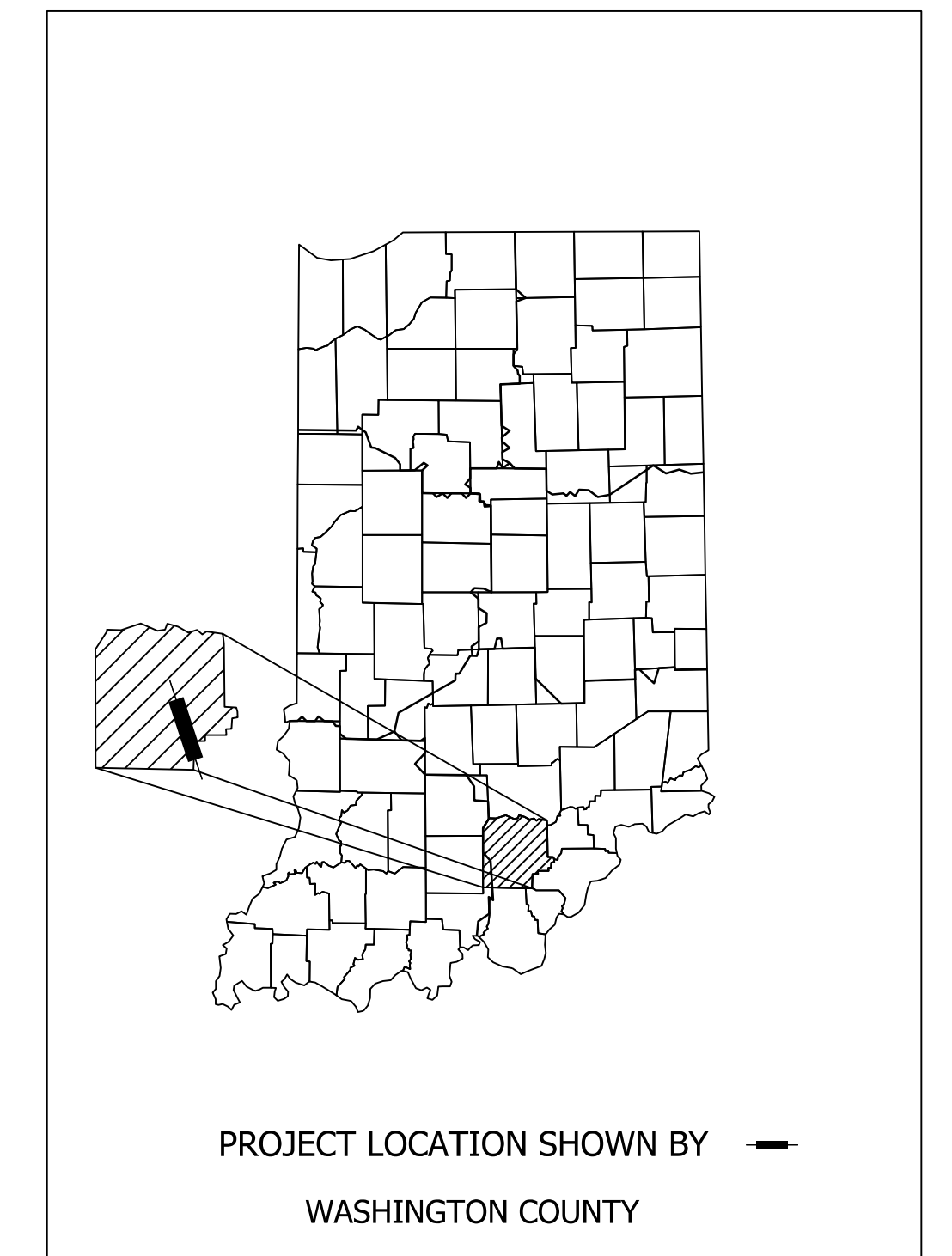


SCALE: 1" = 1000'

LOCATION MAP
(WASHINGTON COUNTY)

TRAFFIC DATA			
A.A.D.T.	(2022)	7,408	V.P.D.
A.A.D.T.	(2042)	7,492	V.P.D.
D.H.V	(2042)	836	V.P.H.
DIRECTIONAL DISTRIBUTION		50.02	%
TRUCKS		8.40	% A.A.D.T.
		7.90	% D.H.V.

DESIGN DATA		
DESIGN SPEED	60	M.P.H.
PROJECT DESIGN CRITERIA	4R (NON-FREEWAY)	
FUNCTIONAL CLASSIFICATION	PRINCIPAL ARTERIAL	
RURAL/URBAN	RURAL	
TERRAIN	LEVEL	
ACCESS CONTROL	NONE	



LATITUDE: 38° 29' 58" LONGITUDE: -86° 0' 47"

BRIDGE LENGTH: 0.036 MI.
ROADWAY LENGTH: 0.119 MI.
TOTAL LENGTH: 0.155 MI.
MAX. GRADE: -2.20 %

HYDROLOGIC UNIT CODE: 051401040602

INDIANA DEPARTMENT OF TRANSPORTATION
STANDARD SPECIFICATIONS DATED 2020
TO BE USED WITH THESE PLANS.



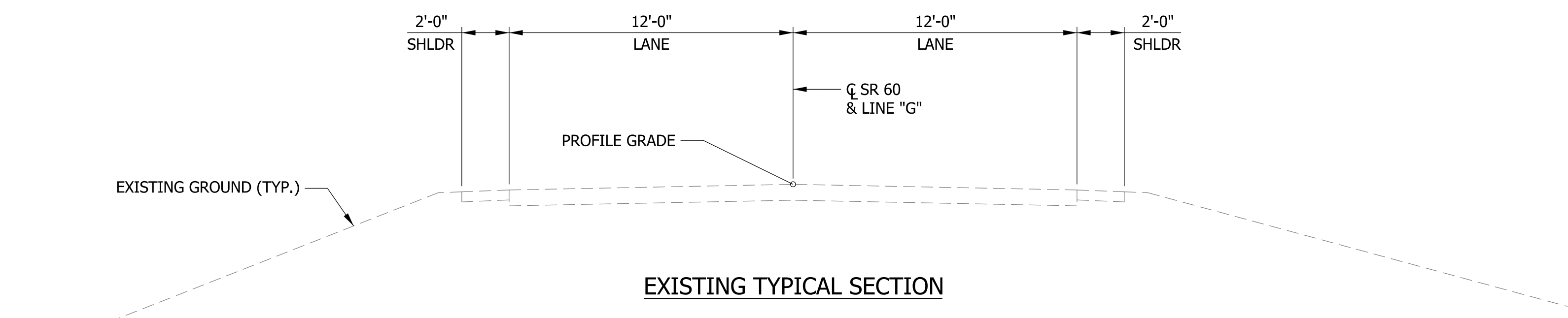
HNTB Indiana, Inc.
The HNTB Companies
Infrastructure Solutions
111 Monument Circle
Suite 1200
Indianapolis, IN 46204

DRAFT
NOT FOR CONSTRUCTION

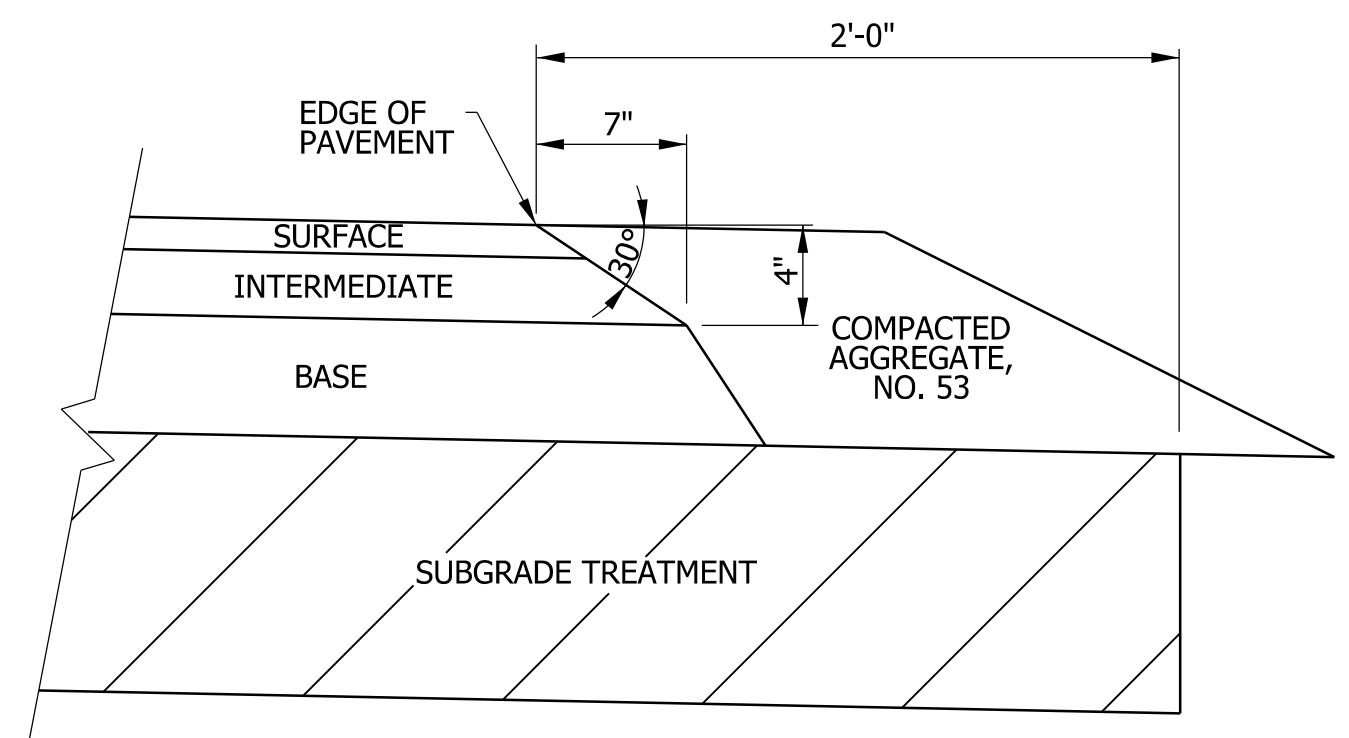
PLANS PREPARED BY: HNTB Indiana, Inc. (317) 636-4682
PHONE NUMBER
CERTIFIED BY: _____ DATE
APPROVED FOR LETTING: _____ DATE
INDIANA DEPARTMENT OF TRANSPORTATION

BRIDGE FILE	
060-88-10268	
DESIGNATION	
1700173	
SURVEY BOOK	SHEETS
ELECTRONIC	1 of 15
CONTRACT	PROJECT
B-40453	1700173

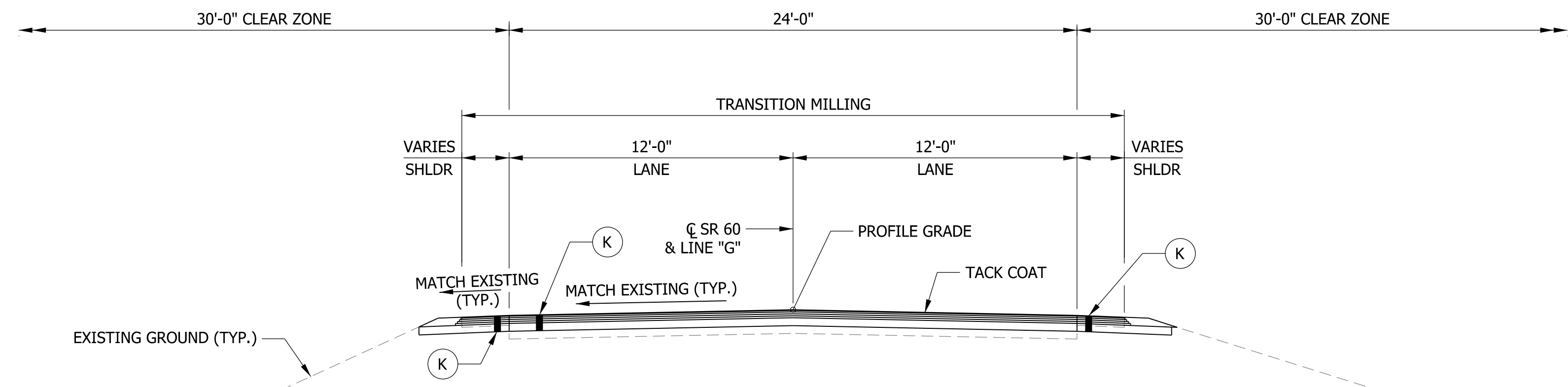
c:\its 11/08/2019 4:24:17 pm
 model: Title sheet
 file: n:\171797_indot-symour_oncall\090-sr60_sfb\ue_des\1700173\cadd\cas\171797-s-br-tb01.dgn



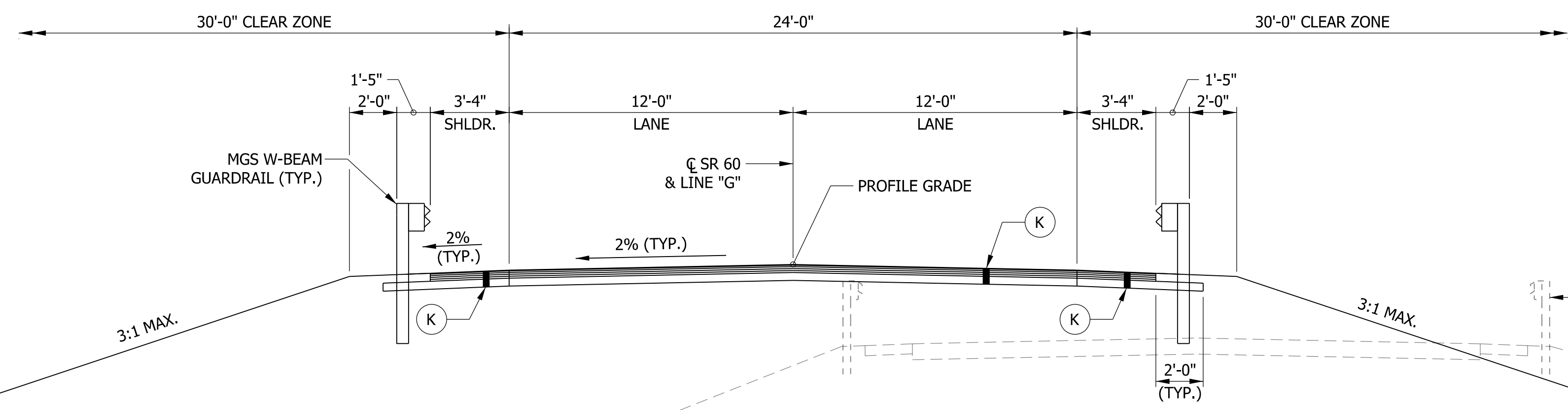
EXISTING TYPICAL SECTION



SAFETY EDGE ON HMA PAVEMENT
N.T.S.



TYPICAL INCIDENTAL SECTION
STA. 104+75.00 TO 105+50.00
STA. 117+01.40 TO 117+51.40



TYPICAL FULL DEPTH SECTION
STA. 105+50.00 TO 109+37.18
STA. 111+78.77 TO 117+01.40

NOTE TO REVIEWER
GRADING AND PROPOSED R/W LIMITS TO BE REFINED PRIOR TO THE NEXT SUBMISSION.

NOTE TO REVIEWER
PAVEMENT COMPOSITION TO BE REVISED UPON RECEIPT OF PAVEMENT DESIGN.

- (H) 165 LB/SYS QC/QA - HMA, 2, 64, SURFACE, 9.5 MM
- (K) 165 LB/SYS QC/QA - HMA, 2, 64, SURFACE 9.5 MM ON 275 LB/SYS QC/QA - HMA, 2, 64, INTERMEDIATE 19.0 MM ON 330 LB/SYS QC/QA - HMA, 2, 64, BASE 19.0 MM ON 3" COMPACTED AGGREGATE, NO. 53 ON SUBGRADE TREATMENT TYPE IC

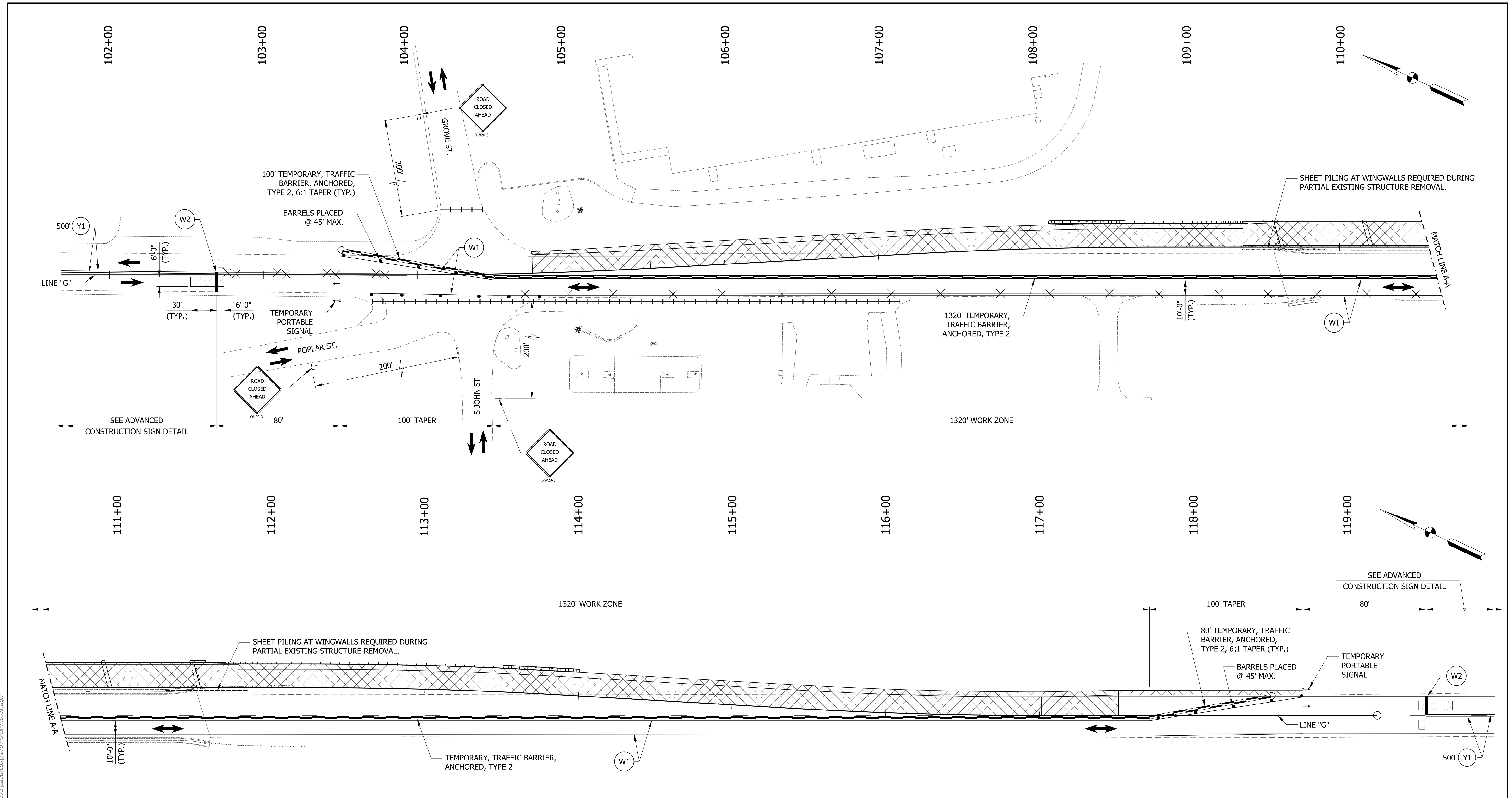
j:\modrck\12/11/2019 2:58:33 pm\modrck\layout\file: n:\171797_indot-symour oncall\090-s60-sfblue des\700173\cadd\cadd\171797-s-br-tso1.dgn

DRAFT
NOT FOR CONSTRUCTION

RECOMMENDED FOR APPROVAL	DESIGN ENGINEER	DATE
DESIGNED: MSS	DRAWN: MSS	
CHECKED: AKP	CHECKED: AKP	

INDIANA DEPARTMENT OF TRANSPORTATION
TYPICAL CROSS SECTIONS

HORIZONTAL SCALE	BRIDGE FILE
AS NOTED	060-88-10268
VERTICAL SCALE	DESIGNATION
AS NOTED	1700173
SURVEY BOOK	SHEETS
ELECTRONIC	3 of 15
CONTRACT	PROJECT
B-40453	1700173



PLAN - PHASE I

NOTE:
 1. FOR ADVANCED CONSTRUCTION SIGN DETAIL, SIGNAL PHASING, SIGNALIZATION NOTES, MOT SUMMARY, AND ADDITIONAL NOTES, SEE SHEET NO. 6.

LEGEND

	CONSTRUCTION SIGN		CONSTRUCTION ZONE		TEMPORARY PORTABLE SIGNAL		T.P.M., REMOVABLE, SOLID, WHITE 4"
	STANDARD DRUM		VEHICLE DETECTION AREA		TEMP. PVMT. MARKING		T.P.M., REMOVABLE, SOLID, WHITE, 24", STOP BAR
	TRAFFIC FLOW		LANE LINE REMOVAL		ENERGY ABSORBING TERMINAL, CZ, TL-2		T.P.M., REMOVABLE, SOLID, YELLOW 4"
	BARRICADE III-B W/ ROAD CLOSURE SIGN ASSEMBLY		TEMPORARY TRAFFIC BARRIER, ANCHORED, TYPE 2				

DRAFT
 NOT FOR CONSTRUCTION

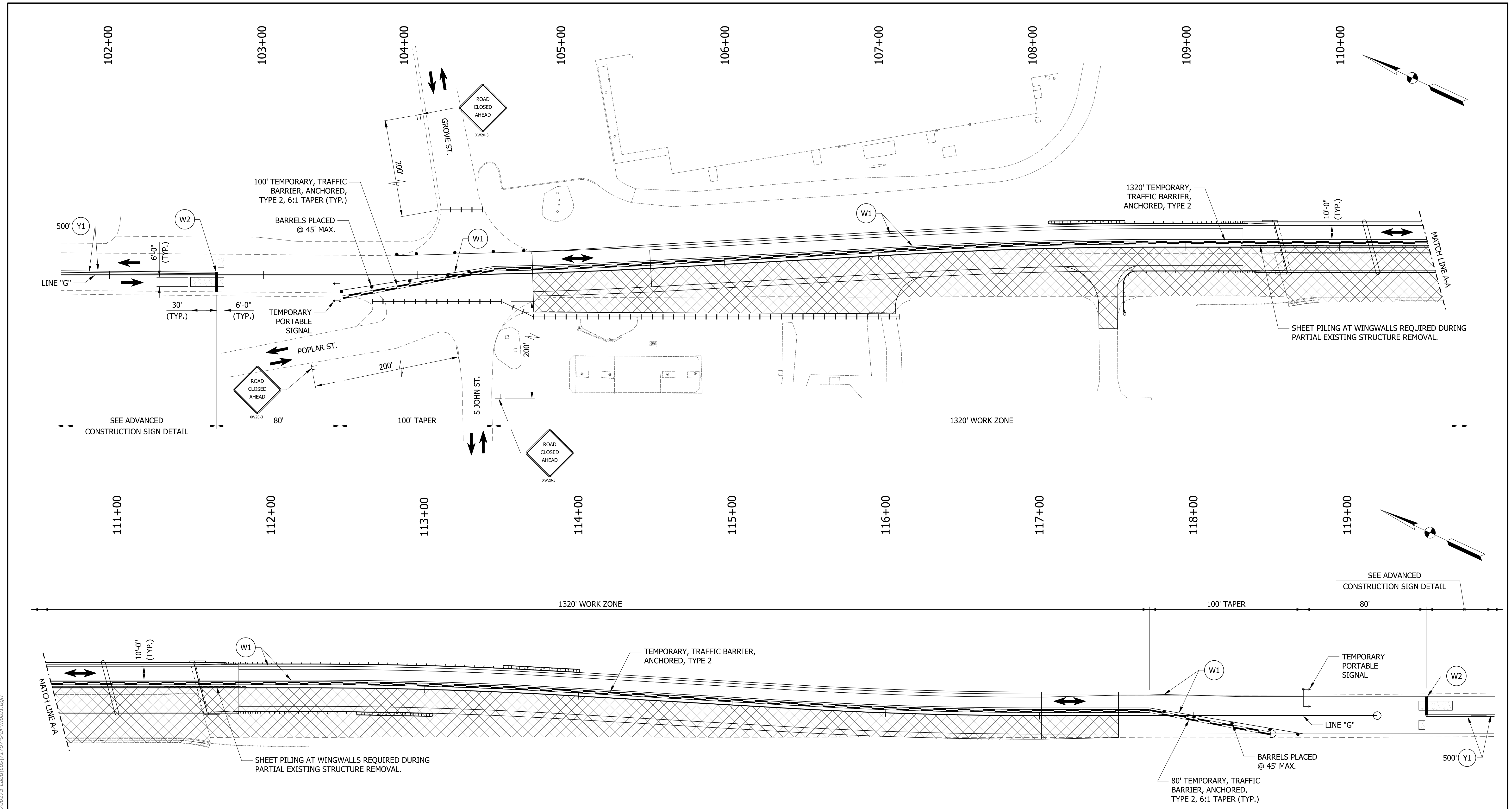
RECOMMENDED FOR APPROVAL _____	DESIGN ENGINEER _____	DATE _____
DESIGNED: CLF	DRAWN: CLF	
CHECKED: JJO	CHECKED: JJO	

INDIANA
 DEPARTMENT OF TRANSPORTATION

MAINTENANCE OF TRAFFIC

HORIZONTAL SCALE 1"=30'-0"	BRIDGE FILE 060-88-10268
VERTICAL SCALE 1"=30'-0"	DESIGNATION 1700173
SURVEY BOOK ELECTRONIC	SHEETS 4 of 15
CONTRACT B-40453	PROJECT 1700173

c:\its 11/14/2019 2:10:38 pm
 model: Mot 01
 file: r171797_indot-seymour_oncall\090-sr60_sfb\ue_dsl\700173\cadd\cas\171797-s-br-mot01.dgn



PLAN - PHASE II

NOTE:
 1. FOR ADVANCED CONSTRUCTION SIGN DETAILS, SIGNAL PHASING, SIGNALIZATION NOTES, MOT SUMMARY, AND ADDITIONAL NOTES, SEE SHEET NO. 6.

LEGEND

	CONSTRUCTION SIGN		CONSTRUCTION ZONE		TEMPORARY PORTABLE SIGNAL		T.P.M., REMOVABLE, SOLID, WHITE 4"
	STANDARD DRUM		VEHICLE DETECTION AREA		TEMP. PVMT. MARKING		T.P.M., REMOVABLE, SOLID, WHITE, 24", STOP BAR
	TRAFFIC FLOW		LANE LINE REMOVAL		ENERGY ABSORBING TERMINAL, CZ, TL-2		T.P.M., REMOVABLE, SOLID, YELLOW 4"
	BARRICADE III-B W/ ROAD CLOSURE SIGN ASSEMBLY		TEMPORARY TRAFFIC BARRIER, ANCHORED, TYPE 2				

DRAFT
 NOT FOR CONSTRUCTION

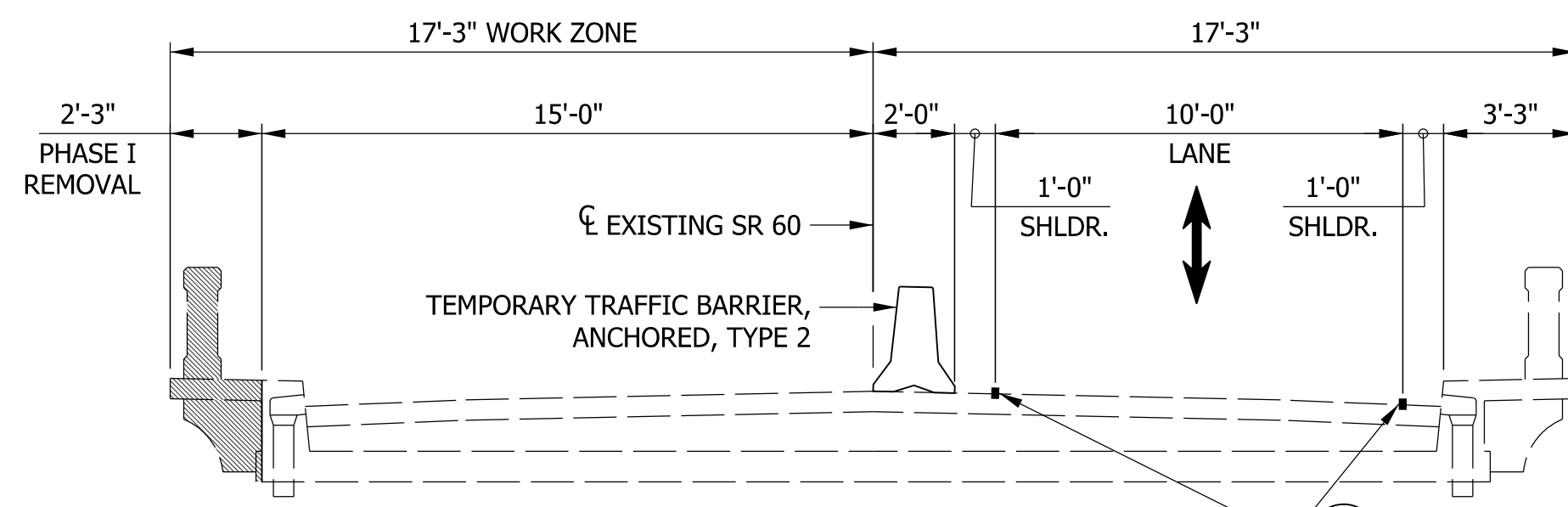
RECOMMENDED FOR APPROVAL _____	DESIGN ENGINEER _____	DATE _____
DESIGNED: CLF	DRAWN: CLF	
CHECKED: JJO	CHECKED: JJO	

INDIANA
 DEPARTMENT OF TRANSPORTATION

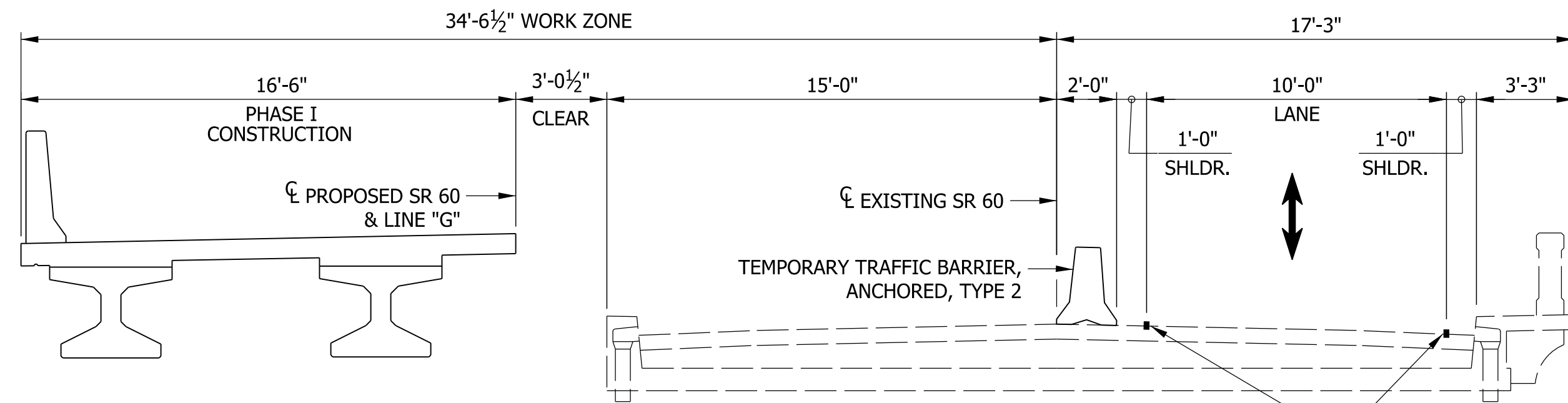
MAINTENANCE OF TRAFFIC

HORIZONTAL SCALE 1"=30'-0"	BRIDGE FILE 060-88-10268
VERTICAL SCALE 1"=30'-0"	DESIGNATION 1700173
SURVEY BOOK ELECTRONIC	SHEETS 5 of 15
CONTRACT B-40453	PROJECT 1700173

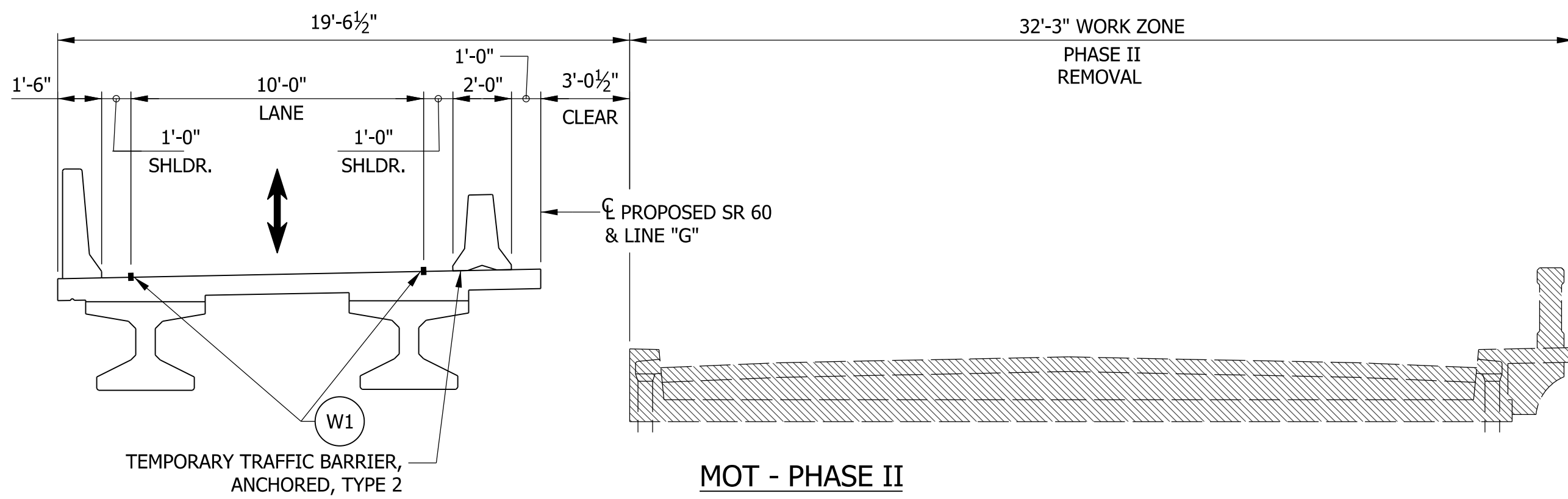
c:\its 11/14/2019 2:10:38 pm
 model: Mot 02
 file: r171797_indot-seymour_oncall\090-sr60_sfb\ue_dsl\700173\cadd\cas\171797-s-br-mot01.dgn



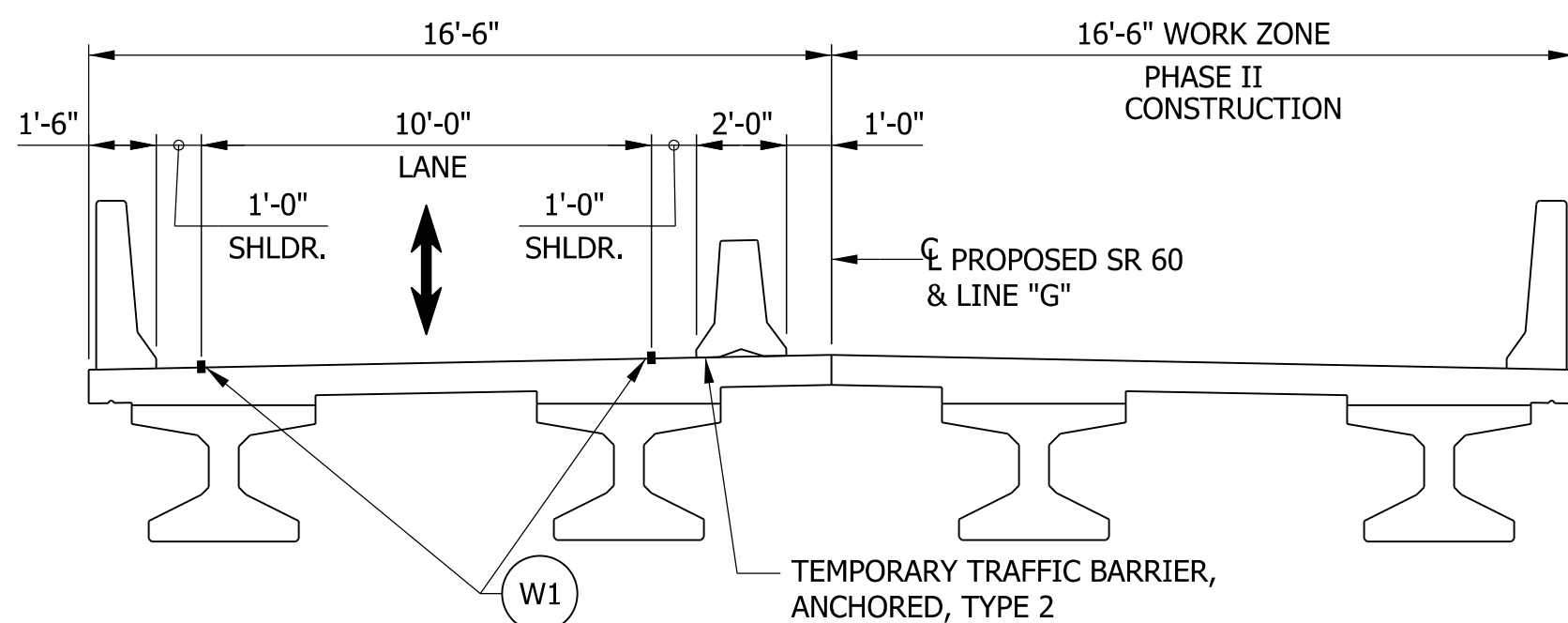
**MOT - PHASE I
(REMOVAL)**
SCALE: 1/4"=1'-0"



**MOT - PHASE I
(CONSTRUCTION)**
SCALE: 1/4"=1'-0"



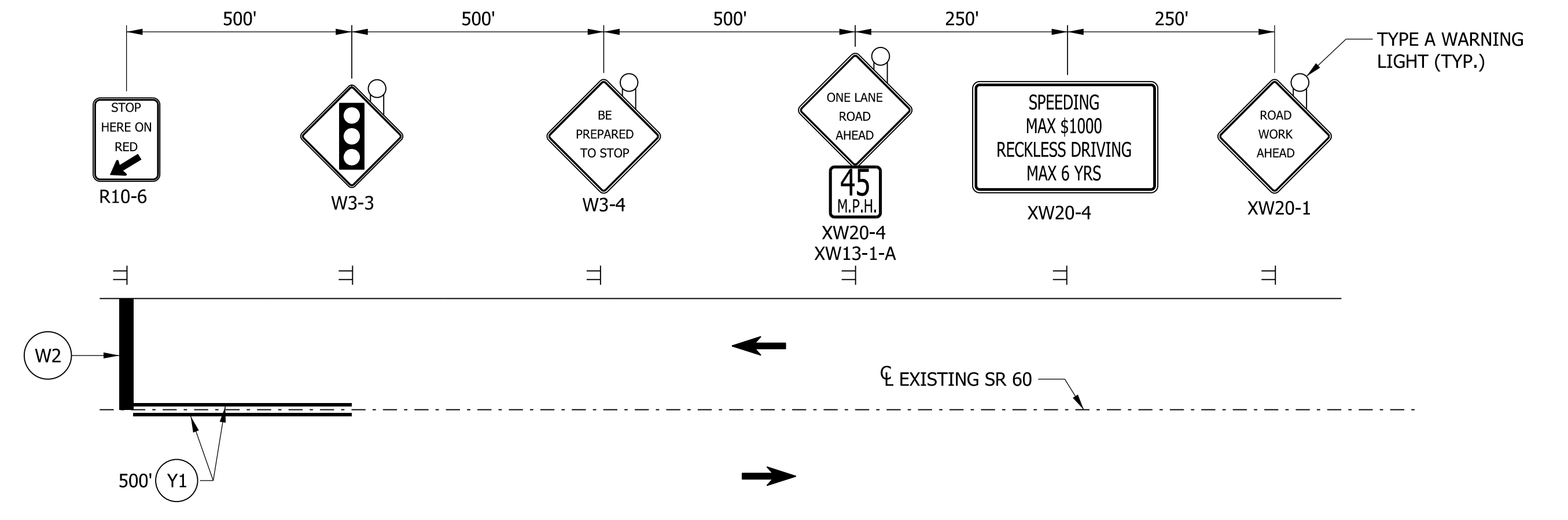
**MOT - PHASE II
(REMOVAL)**
SCALE: 1/4"=1'-0"



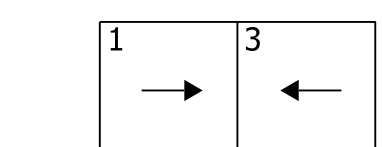
**MOT - PHASE II
(CONSTRUCTION)**
SCALE: 1/4"=1'-0"

LEGEND

- ≡ CONSTRUCTION SIGN
- TRAFFIC FLOW
- ▨ REMOVAL LIMITS
- T.P.M. TEMP. PVMT. MARKING
- W1 T.P.M., REMOVABLE, SOLID, WHITE 4"
- W2 T.P.M., REMOVABLE, SOLID, WHITE, 24", STOP BAR
- Y1 T.P.M., REMOVABLE, SOLID, YELLOW 4"



ADVANCED CONSTRUCTION SIGN DETAIL
NOT TO SCALE



SIGNAL PHASING

SIGNALIZATION NOTES:

- WIRELESS DETECTION FOR TEMPORARY PORTABLE SIGNALS IS REQUIRED.
- PORTABLE TRAFFIC SIGNAL SHALL BE COVERED OR REMOVED WHEN NOT IN USE.
- ALTERNATING TRAFFIC SHALL BE MAINTAINED THROUGHOUT THE LENGTH OF THE PROJECT.
- CONSTRUCTION CLEAR ZONE WIDTH = 10'

NOTES:

1. CONSTRUCTION ZONE DESIGN SPEED = 45 M.P.H.
2. EXISTING CONFLICTING PAVEMENT MARKINGS SHALL BE REMOVED WITHIN PROJECT LIMITS.
3. ALL EXISTING CONFLICTING RAISED PAVEMENT MARKER REFLECTORS SHALL BE REMOVED WITHIN PROJECT LIMITS.
4. CONTRACTOR SHALL REPLACE EDGE LINE STRIPING, CENTER LINE STRIPING, AND RAISED PAVEMENT MARKER REFLECTORS WITHIN PROJECT LIMITS.
5. TYPE A WARNING LIGHTS REQUIRED ON ALL CONSTRUCTION SIGNS.

MOT SUMMARY		
ITEM	UNITS	TOTAL
CONSTRUCTION SIGN A	EA	-
CONSTRUCTION SIGN B	EA	-
ROAD CLOSURE SIGN ASSEMBLY	EA	-
BARRICADE, III-B	LFT	-
TEMPORARY PAVEMENT MARKING, REMOVABLE, 4 IN. LINE, REMOVE	LFT	-
TEMPORARY TRANSVERSE PAVEMENT MARKING, REMOVEABLE, 24 IN.	LFT	-
PORTABLE TEMPORARY TRAFFIC SIGNAL	LS	-
TEMPORARY TRAFFIC BARRIER, ANCHORED, TYPE 2	LFT	-
SNOWPLOWABLE RAISED PAVEMENT MARKER, REMOVE	EA	-
SIGN GROUND MOUNT RESET	EA	-
MAINTENANCE OF TRAFFIC	LS	-

DRAFT
NOT FOR CONSTRUCTION

RECOMMENDED FOR APPROVAL _____	DESIGN ENGINEER _____	DATE _____
DESIGNED: _____ CLF _____	DRAWN: _____ CLF _____	
CHECKED: _____ JJO _____	CHECKED: _____ JJO _____	

**INDIANA
DEPARTMENT OF TRANSPORTATION**

MAINTENANCE OF TRAFFIC

HORIZONTAL SCALE	BRIDGE FILE
AS NOTED	060-88-10268
VERTICAL SCALE	DESIGNATION
AS NOTED	1700173
SURVEY BOOK	SHEETS
ELECTRONIC	6 of 15
CONTRACT	PROJECT
B-40453	1700173

c:\its 11/14/2019 2:10:38 pm
 mode: Mot 03
 file: r171797_indot-seymour oncall\090-sr60-sr60-sr60\cadd\cadd\1700173\cadd\cadd\171797-s-br-mot01.dgn

**SECTION 24, T-1-N,
R-4-E, PIERCE
TOWNSHIP,
WASHINGTON COUNTY**

VIRGINIA HANSON

CURVE DATA
 P.I. = STA. 104+73.90
 P.C. = STA. 103+95.94
 P.T. = STA. 105+51.81
 R = 2840.00'
 Δ = 3°08'40" LT.
 D = 2°01'03"
 T = 77.95'
 L = 155.87'

CURVE DATA
 P.I. = STA. 108+02.76
 P.C. = STA. 107+24.80
 P.T. = STA. 108+80.67
 R = 2840.00'
 Δ = 3°08'40" RT.
 D = 2°01'03"
 T = 77.95'
 L = 155.87'

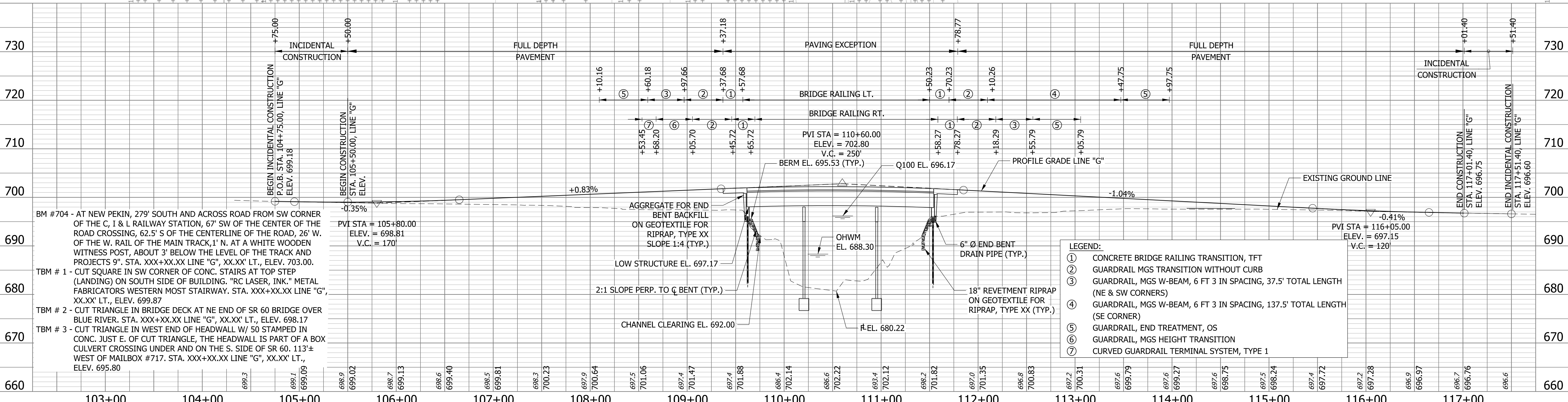
NOTE:
 1. SIGN, RIVER IDENTIFICATION

CURVE DATA

P.I. = STA. 116+19.67
 P.C. = STA. 115+37.91
 P.T. = STA. 117+01.40
 R = 2840.00'
 Δ = 3°17'54" RT.
 D = 2°01'03"
 T = 81.77'
 L = 163.49'

**SECTION 30, T-1-N, R-5-E, POLK
TOWNSHIP, WASHINGTON COUNTY**

**SECTION 25, T-1-N, R-4-E, PIERCE
TOWNSHIP, WASHINGTON COUNTY**



NOTE TO REVIEWER
 TRANSITION OF PROPOSED FULL DEPTH SHOULDERS TO EXISTING SHOULDER WIDTH TO BE DISCUSSED AT THE PFC.

**DRAFT
NOT FOR CONSTRUCTION**

RECOMMENDED FOR APPROVAL	DESIGN ENGINEER	DATE
DESIGNED: MSS	DRAWN: MSS	
CHECKED: TMB	CHECKED: TMB	

**INDIANA
DEPARTMENT OF TRANSPORTATION**

PLAN AND PROFILE

HORIZONTAL SCALE 1" = 50'	BRIDGE FILE 060-88-10268
VERTICAL SCALE 1" = 10'	DESIGNATION 1700173
SURVEY BOOK ELECTRONIC	SHEETS 7 of 15
CONTRACT B-40453	PROJECT 1700173

j:\mcdrick
 12/20/2019 8:49:38 am
 model: final option
 file: n:\17197_indot-seymour oncall\090-sr60_sfbuue_des\1700173\add\cadd\17197-s-br-ph01_50_scale.dgn

107+00

108+00

109+00

110+00

111+00

112+00

113+00

114+00

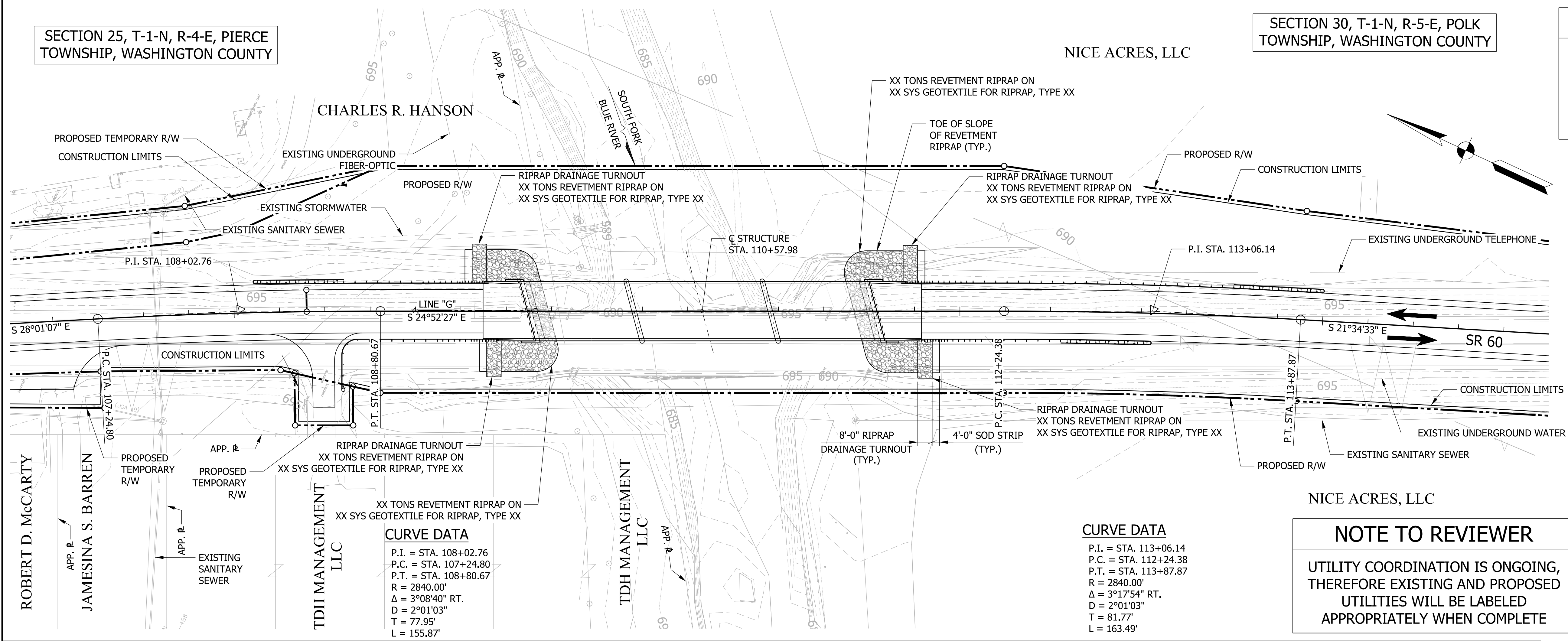
115+00

SECTION 25, T-1-N, R-4-E, PIERCE TOWNSHIP, WASHINGTON COUNTY

SECTION 30, T-1-N, R-5-E, POLK TOWNSHIP, WASHINGTON COUNTY

NOTE TO REVIEWER

RIGHT-OF-WAY WILL NEED TO BE ACQUIRED FOR THIS PROJECT. COORDINATION IS ONGOING. EXISTING AND PROPOSED RIGHT-OF-WAY WILL BE LABELED APPROPRIATELY WHEN COMPLETE



EXISTING STRUCTURE

EXISTING STRUCTURE IS A THREE SPAN REINFORCED CONCRETE ARCH BRIDGE BUILT IN 1937. EACH SPAN IS 50'-0", WITH A CLEAR ROADWAY WIDTH OF 28'-0". EXISTING STRUCTURE IS TO BE REMOVED

HYDRAULIC DATA

WATERWAY OPENING REQUIRED	1934.95	SFT
WATERWAY OPENING PROVIDED	1935.83	SFT
DRAINAGE AREA	41.97	SQ MI
DESIGN DISCHARGE, Q100	11,100	CFS
VELOCITY	5.99	FT/S
Q100 ELEV.	696.17	FT
BACKWATER AT Q100	0.3	FT
EXISTING WATERWAY OPENING	1434.54	SFT
EXISTING BACKWATER	1.31	FT
MIN. LOW STRUCTURE ELEV. REQ.	697.17	FT
EXISTING LOW STRUCTURE ELEV.	695.75	FT

HYDRAULIC SCOUR DATA

Q100 DISCHARGE	11,100	CFS
Q100 ELEV.	696.17	FT
VELOCITY AT Q100 (MAX.)	7.47	FT/S
SCOUR DEPTH (CONTRACTION)	3.02	FT
SCOUR DEPTH (TOTAL)	9.02	FT
LOW SCOUR ELEV.	671.20	FT
Q500 DISCHARGE	15,540	CFS
Q500 ELEV.	698.51	FT
VELOCITY AT Q500 (MAX.)	9.63	FT/S
SCOUR DEPTH (CONTRACTION)	5.57	FT
SCOUR DEPTH (TOTAL)	14.09	FT
LOW SCOUR ELEV.	666.13	FT

NOTE TO REVIEWER

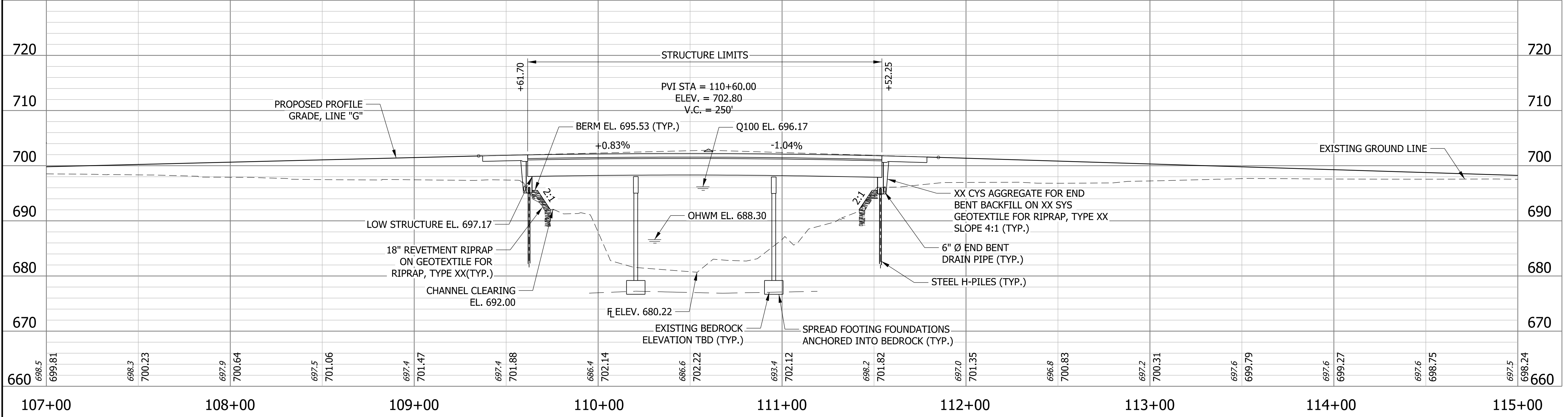
UTILITY COORDINATION IS ONGOING, THEREFORE EXISTING AND PROPOSED UTILITIES WILL BE LABELED APPROPRIATELY WHEN COMPLETE

CURVE DATA

P.I. = STA. 108+02.76
 P.C. = STA. 107+24.80
 P.T. = STA. 108+80.67
 R = 2840.00'
 Δ = 3°08'40" RT.
 D = 2°01'03"
 T = 77.95'
 L = 155.87'

CURVE DATA

P.I. = STA. 113+06.14
 P.C. = STA. 112+24.38
 P.T. = STA. 113+87.87
 R = 2840.00'
 Δ = 3°17'54" RT.
 D = 2°01'03"
 T = 81.77'
 L = 163.49'



CONTINUOUS COMPOSITE PRESTRESSED CONCRETE BULB-TEE BEAM BRIDGE
 3 SPANS: 58'-0", 75'-0", 58'-0"
 SKEW: 15°00'00" LT.
 CLEAR ROADWAY: 30'-0"
 SR 60 OVER SOUTH FORK BLUE RIVER
 WASHINGTON COUNTY

NOTE TO REVIEWER

REFERENCE TIES TO BE PROVIDED ON LCRS IN FUTURE SUBMITTALS

DRAFT
 NOT FOR CONSTRUCTION

RECOMMENDED FOR APPROVAL	DESIGN ENGINEER	DATE
DESIGNED: MSS	DRAWN: MSS	
CHECKED: AKP	CHECKED: AKP	

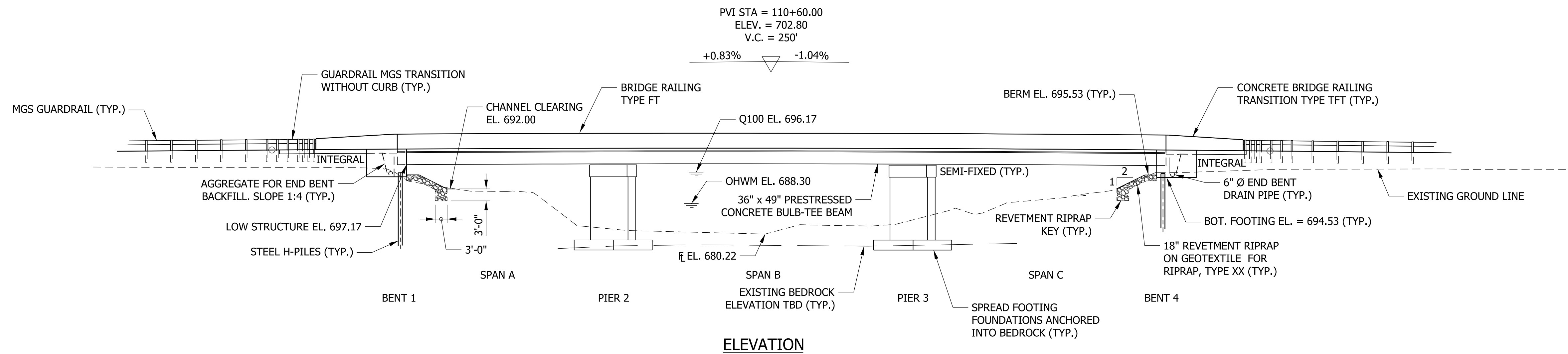
INDIANA
 DEPARTMENT OF TRANSPORTATION

LAYOUT

HORIZONTAL SCALE	BRIDGE FILE
1/2" = 1'-0"	060-88-10268
VERTICAL SCALE	DESIGNATION
1/2" = 1'-0"	1700173
SURVEY BOOK	SHEETS
ELECTRONIC	8 of 15
CONTRACT	PROJECT
B-40453	1700173

jmmcdrick
 12/20/2019 8:49:47 am
 model: Final option
 file: n:\171797_indot-seymour_oncall\090-s60_sblue_des\1700173\add\cads\171797-s-br-ly01.dgn

STRUCTURE TO BE BUILT ON A 250' VERTICAL CURVE



NOTE TO REVIEWER

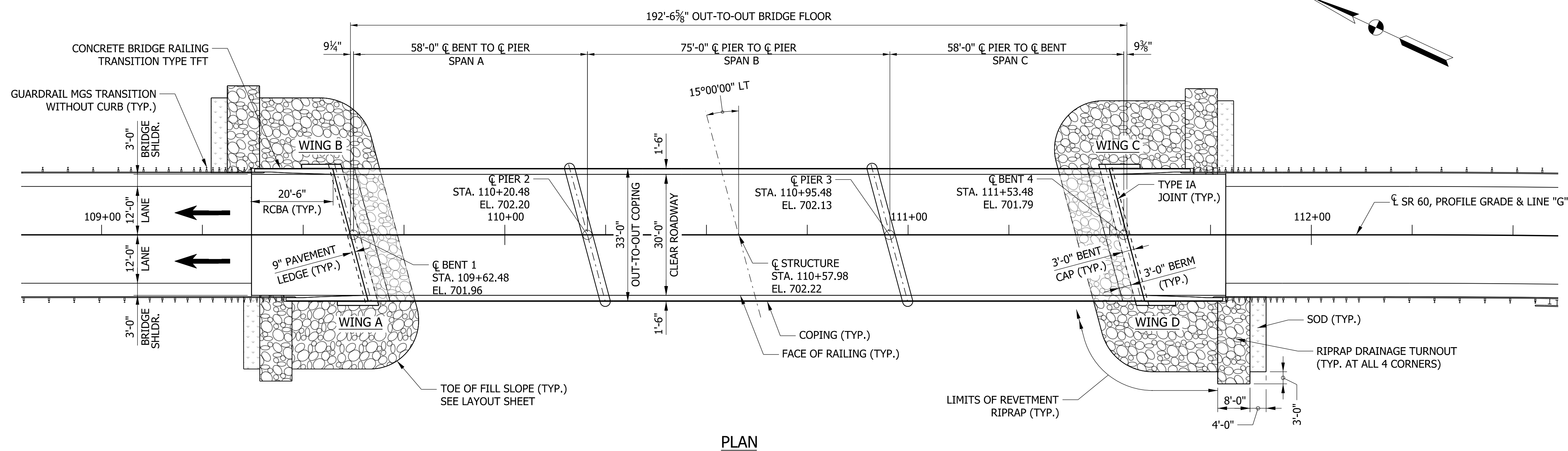
PAVEMENT LEDGE HAS BEEN INCREASED TO 9" PER COORDINATION WITH THE INDOT STRUCTURES COMMITTEE

NOTE TO REVIEWER

PER COORDINATION WITH SEYMOUR DISTRICT AND INDOT HYDRAULICS, 1 FOOT OF FREEBOARD TO BE PROVIDED AT THIS STRUCTURE.

NOTE TO REVIEWER

DUE TO BRIDGE SKEW, BENT CAP WIDTH WILL BE EVALUATED AT STG3.



CONTINUOUS COMPOSITE PRESTRESSED CONCRETE BULB-TEE BEAM BRIDGE
3 SPANS: 58'-0", 75'-0", 58'-0"
SKEW: 15°00'00" LT.
CLEAR ROADWAY: 30'-0"
SR 60 OVER SOUTH FORK BLUE RIVER
WASHINGTON COUNTY

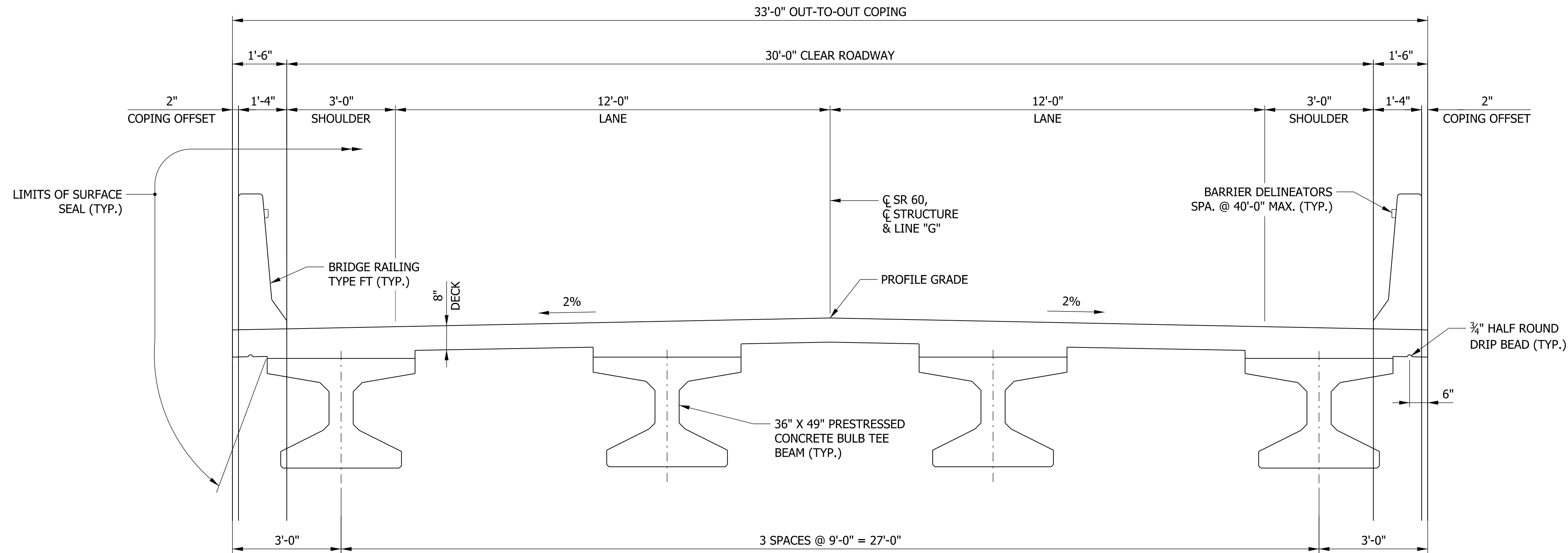
DRAFT
NOT FOR CONSTRUCTION

RECOMMENDED FOR APPROVAL	DESIGN ENGINEER	DATE
DESIGNED: MSS	DRAWN: MSS	
CHECKED: SL	CHECKED: AKP	

INDIANA DEPARTMENT OF TRANSPORTATION
GENERAL PLAN

HORIZONTAL SCALE	BRIDGE FILE
1/16" = 1'-0"	060-88-10268
VERTICAL SCALE	DESIGNATION
1/16" = 1'-0"	1700173
SURVEY BOOK	SHEETS
ELECTRONIC	9 of 15
CONTRACT	PROJECT
B-40453	1700173

J:\mrodrick
12/20/2019 8:46:40 am
mrodrick.dwg
file: r:\171797_indot-seymour_oncall\090-sr60_sblue.dwg 700173\cadd\cadd\171797-s-br-p\m01.dgn



TYPICAL SECTION
(LOOKING AHEAD STATION)

GENERAL NOTES

REINFORCING BAR COVER SHALL BE 2½" MIN. IN TOP AND 1" MIN. IN BOTTOM OF FLOOR SLABS, AND 2" MIN. IN ALL OTHER PARTS, UNLESS NOTED.

ALL DIMENSIONS AND ELEVATIONS ARE IN FEET (FT) UNLESS OTHERWISE NOTED.

ALL CONCRETE TO BE CLASS "C". REINFORCING BARS IN DECK, BARRIER, BARRIER TRANSITIONS, AND END BENTS SHALL BE EPOXY COATED.

ALL THE EXPOSED FACES OF THE END BENTS, PIERS, BARRIERS, BARRIER TRANSITIONS THE TOP OF DECK, THE FACE OF THE DECK COPING, THE REINFORCED CONCRETE BRIDGE APPROACH SLABS, AND THE UNDERSIDE OF THE DECK FROM COPING TO THE FACE OF THE EXTERIOR BEAM SHALL RECEIVE SURFACE SEAL. ALL SURFACE SEAL WILL BE PAID FOR AS LUMP SUM.

DESIGN DATA

LIVE LOAD
SUPERSTRUCTURE AND SUBSTRUCTURE DESIGNED FOR HL-93 LOADING IN ACCORDANCE WITH AASHTO LRFD BRIDGE DESIGN SPECIFICATIONS, 8TH EDITION, 2017.

DEAD LOAD
DESIGNED FOR ACTUAL DEAD LOAD PLUS 35 PSF OF FUTURE WEARING SURFACE AND 15 PSF FOR PERMANENT METAL DECK FORMS.

FLOOR SLAB
DESIGNED WITH A 7½" STRUCTURAL DEPTH PLUS ½" SACRIFICIAL WEARING SURFACE.

SEISMIC DESIGN DATA

SEISMIC PERFORMANCE ZONE = XX
ACCELERATION COEFFICIENT = XX
SEISMIC SOIL PROFILE TYPE = XX

DESIGN STRENGTHS

PRESTRESSED CONCRETE f_c = 8,000 psi @ 28 DAYS
 PRESTRESSED CONCRETE f_c = 6,500 psi @ RELEASE
 CLASS "C" CONCRETE f_c = 4,000 psi
 CLASS "A" CONCRETE f_c = 3,500 psi
 CLASS "B" CONCRETE f_c = 3,000 psi
 REINFORCING BARS, GRADE 60 STEEL f_y = 60,000 psi

CONSTRUCTION LOADING

THE EXTERIOR BEAM HAS BEEN CHECKED FOR STRENGTH, DEFLECTION, AND OVERTURNING USING THE CONSTRUCTION LOADS SHOWN BELOW. CANTILEVER OVERHANG BRACKETS WERE ASSUMED FOR SUPPORT OF THE DECK OVERHANG PAST THE EDGE OF THE EXTERIOR BEAM. THE FINISHING MACHINE WAS ASSUMED TO BE SUPPORTED 6 IN. OUTSIDE THE VERTICAL COPING FORM. THE TOP OVERHANG BRACKETS WERE ASSUMED TO BE LOCATED 6 IN. PAST THE EDGE OF THE VERTICAL COPING FORM. THE BOTTOM OVERHANG BRACKETS WERE ASSUMED TO BE BRACED AGAINST THE INTERSECTION OF THE GIRDER BOTTOM FLANGE AND WEB.

DECK FALSEWORK LOADS
DESIGNED FOR 15 PSF FOR PERMANENT METAL STAY-IN-PLACE DECK FORMS, REMOVABLE DECK FORMS, AND 2 FT EXTERIOR WALKWAY.

CONSTRUCTION LIVE LOAD
DESIGNED FOR 20 PSF EXTENDING 2 FT PAST THE EDGE OF COPING AND 75 LB/FT VERTICAL FORCE APPLIED AT A DISTANCE OF 6 IN. OUTSIDE THE FACE OF COPING OVER A 30 FT LENGTH OF THE DECK CENTERED WITH THE FINISHING MACHINE.

FINISHING-MACHINE LOAD
4500 LB DISTRIBUTED OVER 10 FT ALONG THE COPING.

WIND LOAD
STRUCTURE DESIGNED FOR 70 MPH HORIZONTAL WIND LOADING IN ACCORDANCE WITH AASHTO LRFD 3.8.1.

STRENGTH III: 115 MPH
 STRENGTH V: 80 MPH
 SERVICE I: 70 MPH

CONTINUOUS COMPOSITE PRESTRESSED
 CONCRETE BULB-TEE BEAM BRIDGE
 3 SPANS: 58'-0", 75'-0", 58'-0"
 SKEW: 15°00'00" LT.
 CLEAR ROADWAY: 30'-0"
 SR 60 OVER SOUTH FORK BLUE RIVER
 WASHINGTON COUNTY

jmmadrck
 12/20/2019 8:47:35 am
 model: Typical sections - proposed
 file: r:\171797_indot-seymour_oncall\090-sr60_sfb\ue_dsl\700173\cadd\cads\171797-s-br-ph01.dgn

DRAFT
NOT FOR CONSTRUCTION

RECOMMENDED FOR APPROVAL _____	DESIGN ENGINEER _____	DATE _____
DESIGNED: _____ MSS _____	DRAWN: _____ MSS _____	
CHECKED: _____ SL _____	CHECKED: _____ AKP _____	

INDIANA
 DEPARTMENT OF TRANSPORTATION

GENERAL PLAN

HORIZONTAL SCALE	BRIDGE FILE
1/2" = 1'-0"	060-88-10268
VERTICAL SCALE	DESIGNATION
1/2" = 1'-0"	1700173
SURVEY BOOK	SHEETS
ELECTRONIC	10 of 15
CONTRACT	PROJECT
B-40453	1700173