



# **Virginia Avenue and Fletcher Avenue Bridge Improvements**

## ***Informational Meeting for Businesses***

July 31 | 3:30 p.m.

Southeast Community Services

INDOT Projects 2200722 & 2200723

# Presenters

---



- **Kyle Muellner**, Project Manager, Parsons



- **Mindy Peterson**, Public Involvement Director, Parsons



# Project Overview

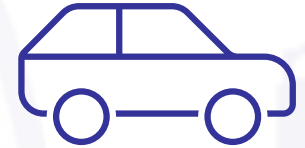
- **Virginia and Fletcher Avenue Bridge Improvements** in downtown Indianapolis will extend the life of the existing bridges over I-65 and I-70
- Improvements include:
  - Replacing bridge decks and railings
  - Repairing concrete, sidewalks, and barriers
  - Improved safety
- Construction is expected to begin in early 2027 and last up to two years



# What to Expect

---

- **Virginia Avenue** bridge expected to close first for improvements; **Fletcher Avenue** bridge expected to follow in 2028 (tentative)
- Each bridge closure to last about **eight months**
- Occasional weekend lane restrictions on I-65/I-70
- **Indianapolis Cultural Trail** to be detoured for about four months
- Signed detours to guide cars, bikes and pedestrians



# What to Expect

## ANTICIPATED TIMELINE

- Construction Begins
- Virginia Avenue Bridge Closes
- Cultural Trail Temporary Closure/  
Trail Detour Begins

Virginia Avenue Bridge Reopens

- Fletcher Avenue Bridge Reopens
- **Project Completion**

**2027**

Trail Detour Ends

**2028**

Fletcher Avenue Bridge Closes

**2029**



# Virginia Avenue Bridge – Project Limits

- Virginia Avenue bridge over I-65 between Calvary Street and Grove Avenue
- About 250 feet long



# Virginia Avenue Bridge Improvements

- New bridge deck and railing
- Eliminate bridge joints
- New sidewalk (north side)
- Cultural trail lighting and trail hex-blocks restored (south side)
- Improved safety features





# Virginia Avenue Bridge Detour

*Vehicular traffic will be detoured around the bridge for about eight months using Calvary Street and Fletcher Avenue.*

- **Westbound Detour:**

- Shelby Street > Fletcher Avenue > Calvary Street

- **Eastbound Detour:**

- Calvary Street > Fletcher Avenue > Shelby Street > Woodlawn Avenue

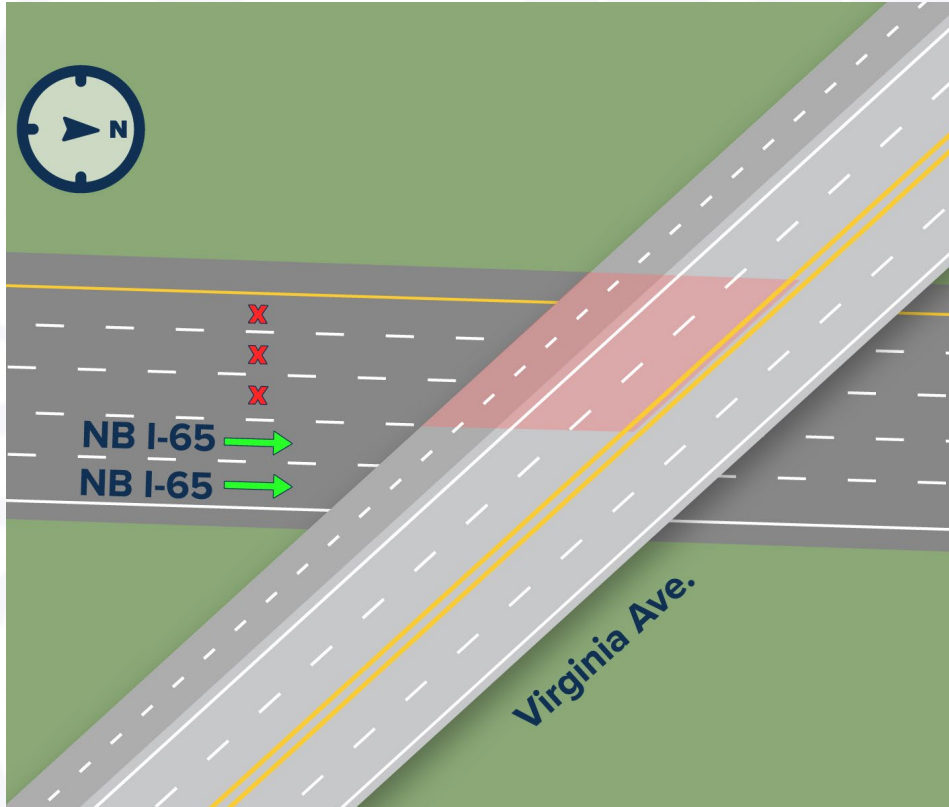
*In-bound traffic will use the Fletcher Avenue bridge.*





# Virginia Avenue – Maintenance of Traffic

Phase 1A (Demo) & 1B (Deck Pan Placement)



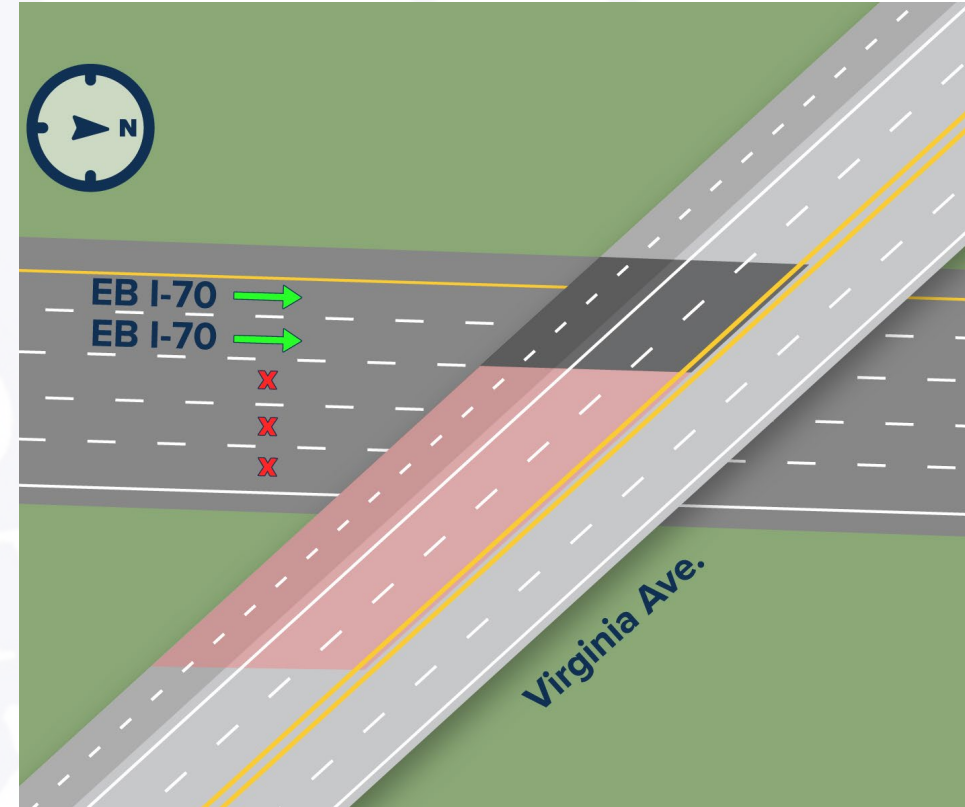
Virginia Avenue: Closed (duration)

Pedestrian Traffic: Open (duration)

Eastbound I-70: Closed (weekend)

Phase 1 can be flipped with Phase 2.

Phase 2A (Demo) & 2B (Deck Pan Placement)



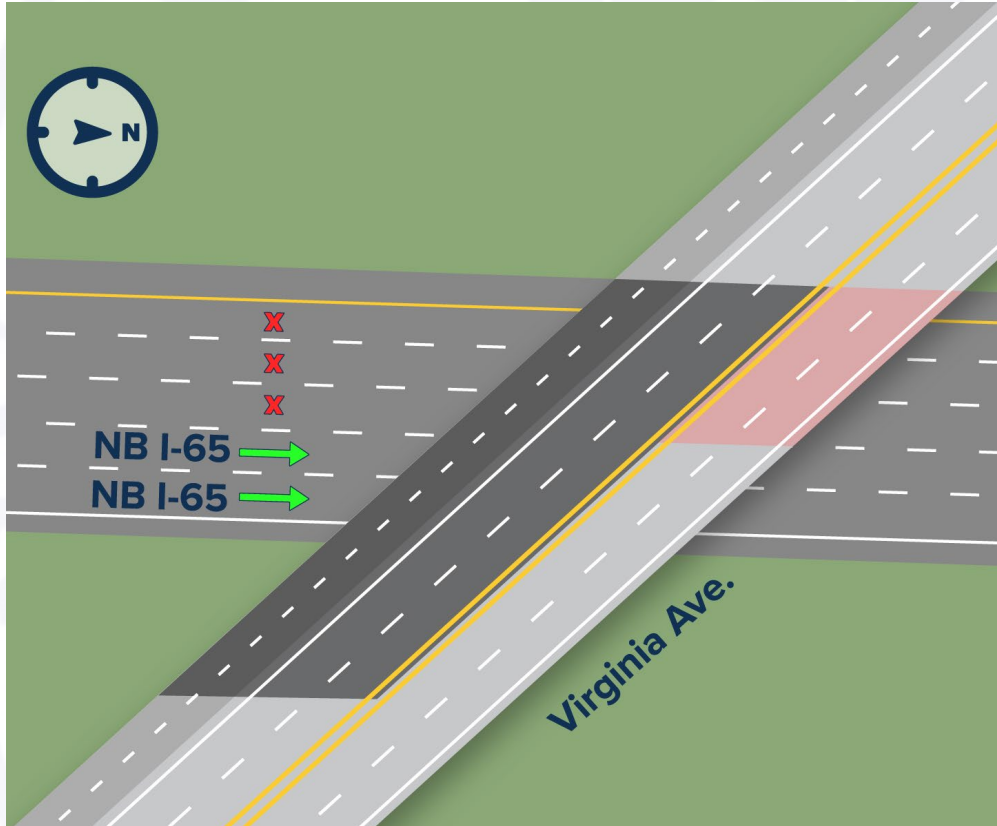
Virginia Avenue: Closed (duration)

Pedestrian Traffic: Open (duration)

Northbound I-65: Closed (weekend)

# Virginia Avenue – Maintenance of Traffic

Phase 3A (Demo) & 3B (Deck Pan Placement)



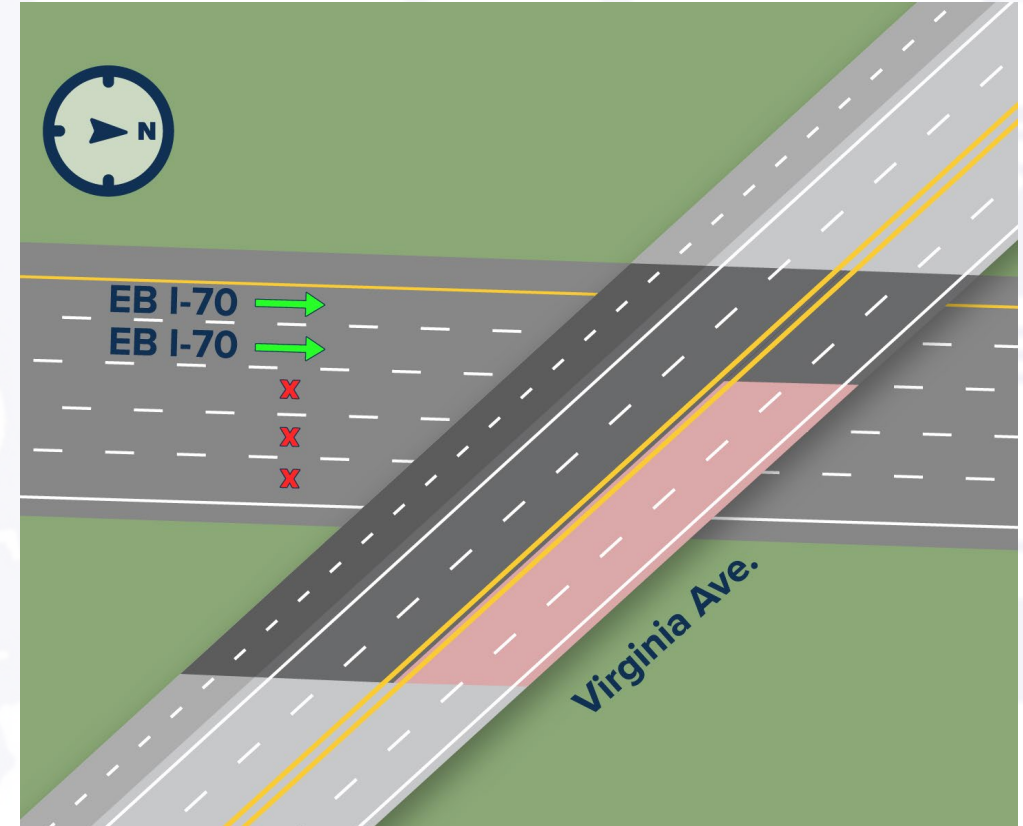
Virginia Avenue: Closed (duration)

Pedestrian Traffic: Open (duration)

Eastbound I-70: Closed (weekend)

Cultural trail must be complete before Phase 3 can begin.

Phase 4A (Demo) & 4B (Deck Pan Placement)



Virginia Avenue: Closed (duration)

Pedestrian Traffic: Open (duration)

Northbound I-65: Closed (weekend)

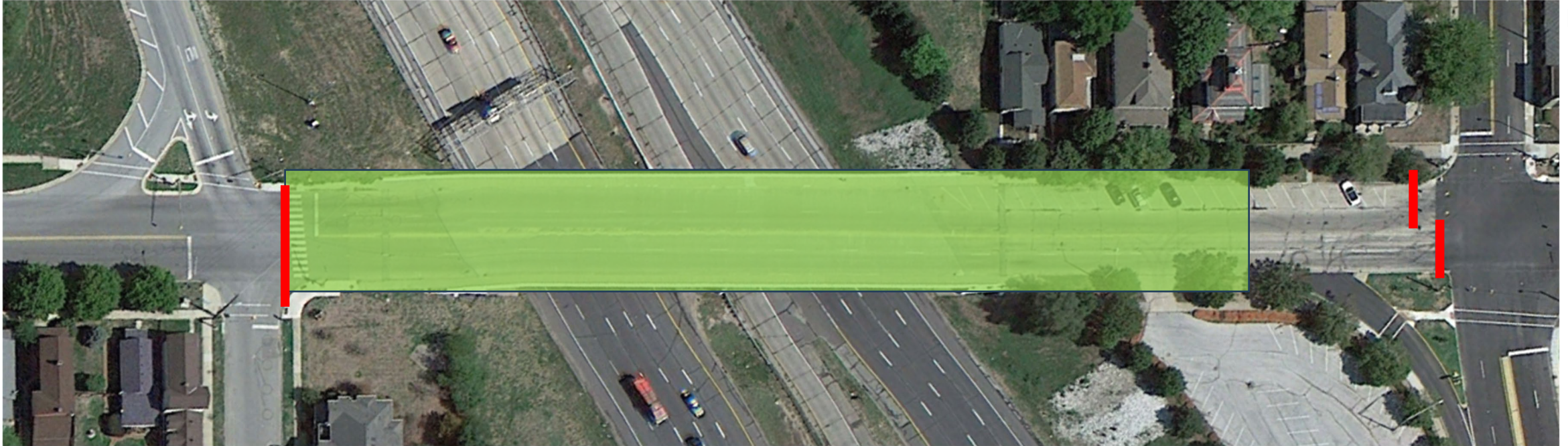
Phase 3 can be flipped with Phase 4.



# Fletcher Avenue – Project Limits

---

- Fletcher Avenue bridge over I-65 and I-70 between South Pine Street and Calvary Street
- About 600 feet long





# Fletcher Avenue Bridge Improvements

---

- New bridge deck and railing
- Eliminate bridge joints
- New sidewalk (both sides)
- Improved safety features and traffic detectors



# Fletcher Avenue Bridge Detour

*Vehicular traffic will be detoured around the bridge for about eight months using Calvary Street and Virginia Avenue.*

- **Westbound Detour:**

- Calvary Street > Virginia Avenue  
College Avenue

- **Eastbound Detour:**

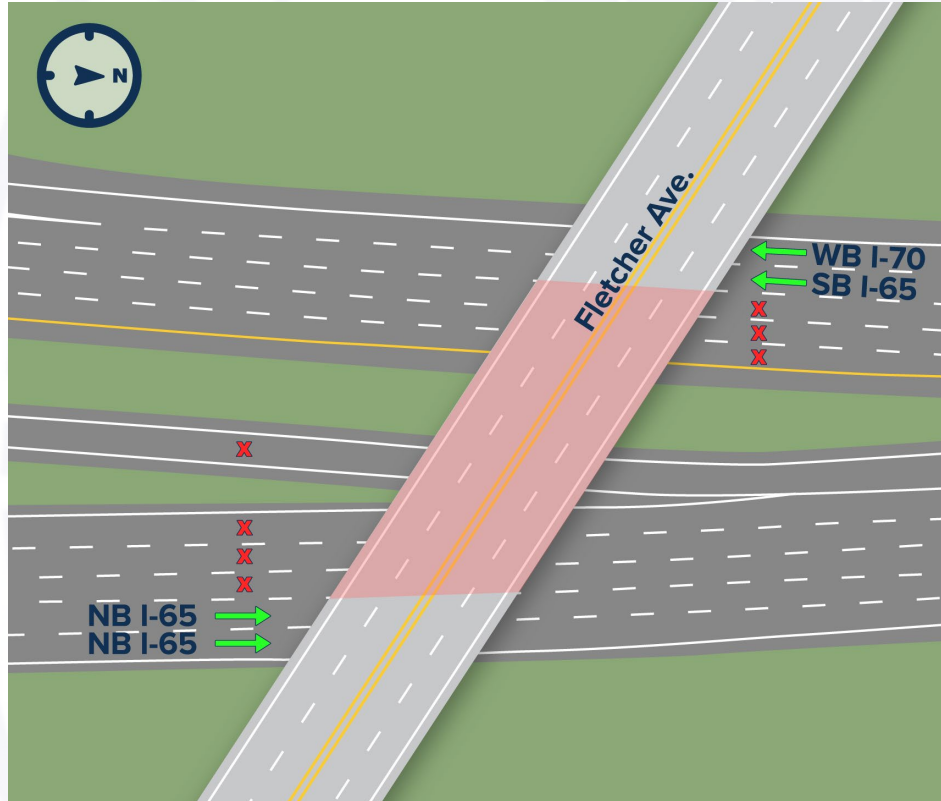
- Virginia Avenue > Calvary Street

*In-bound traffic will use the Virginia Avenue bridge.*



# Fletcher Avenue – Maintenance of Traffic

Phase 1 (Demo) & 4 (Deck Pan Placement)



**Fletcher Avenue: Closed (duration)**

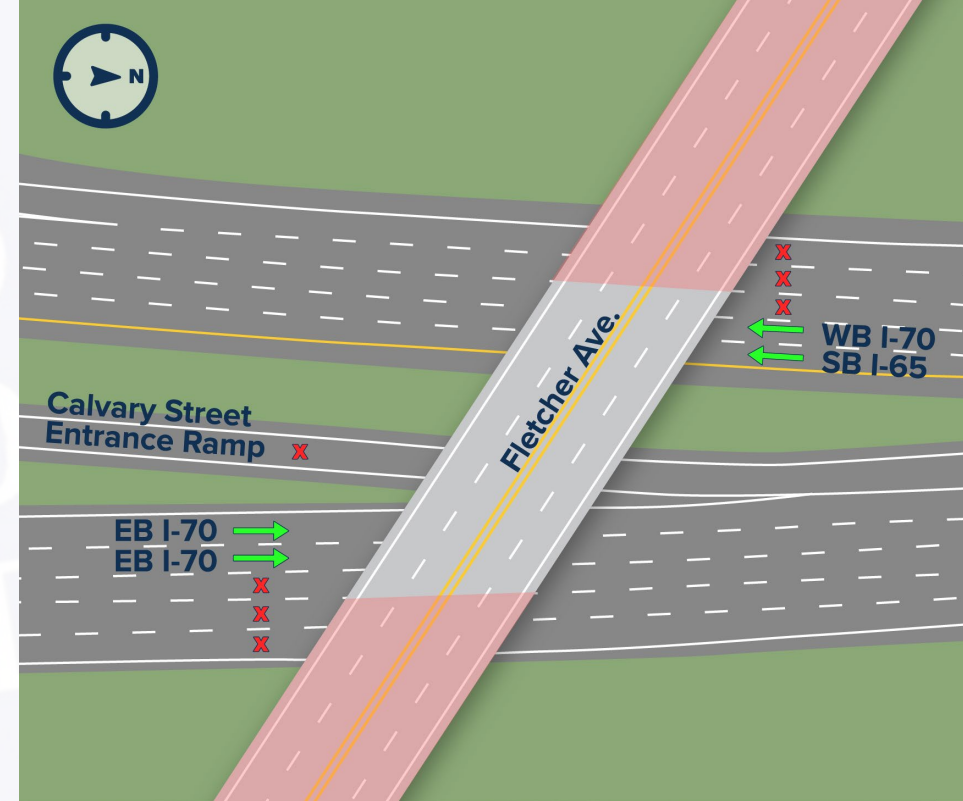
**Calvary Street: Closed (duration)**

**Collector-Distributor System: Closed (duration)**

**Eastbound I-70: Closed (weekend)**

**Westbound I-70 & Southbound I-65: Single Lane Closed**

Phase 2 (Demo) & 3 (Deck Pan Placement)



**Fletcher Avenue: Closed (duration)**

**Calvary Street: Closed (duration)**

**Collector-Distributor System: Closed (duration)**

**Northbound I-65: Closed (weekend)**

**Westbound I-70 & Southbound I-65: Single Lane Closed**



# Pedestrian Detours

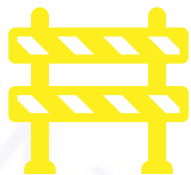
*Trail users and pedestrians will be rerouted safely using alternate sidewalks or temporary shared-use paths.*

- **Fletcher Avenue**

- Calvary Street, Virginia Avenue and Fletcher Avenue (ADA compliant route)
- Detour in place for about 8 months

- **Indianapolis Cultural Trail**

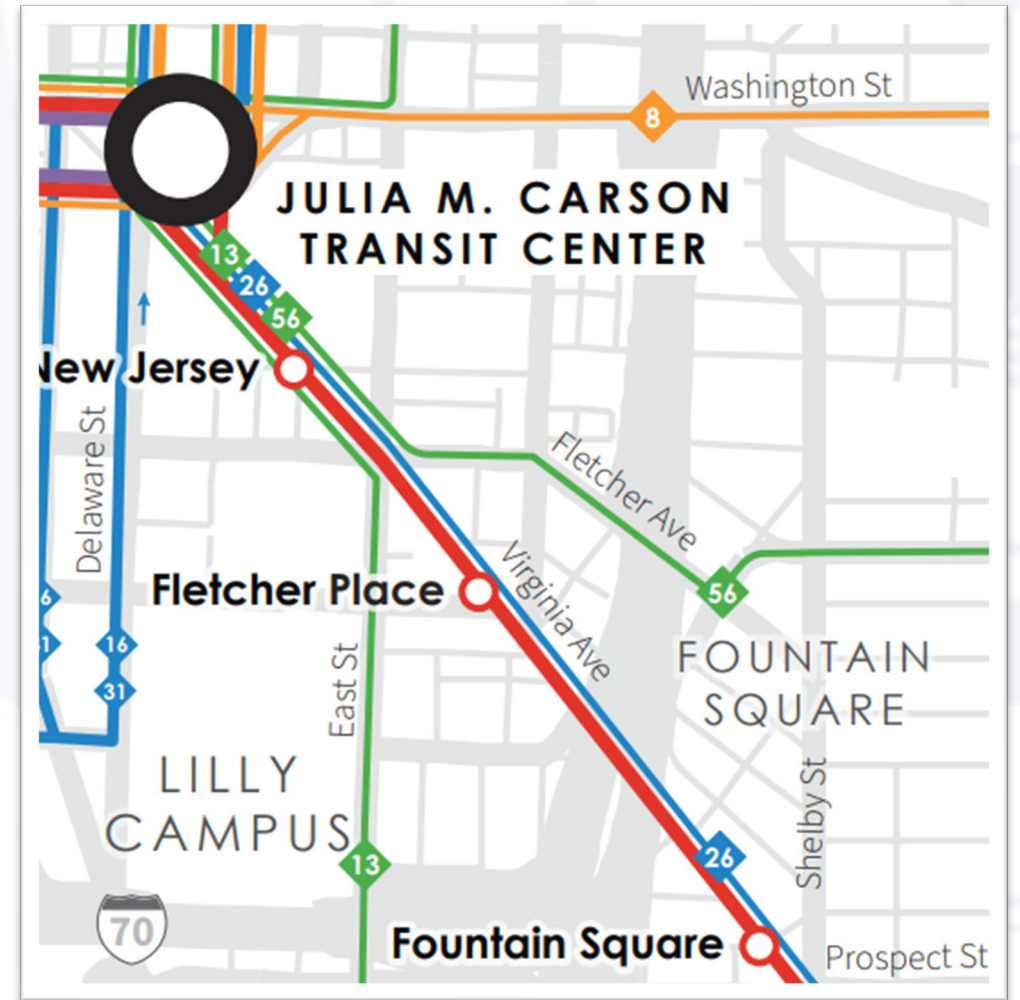
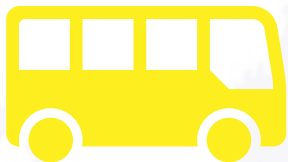
- North side of the Virginia Avenue bridge
- Detour in place for about four months



# Bus Detours

*The Project Team is coordinating with IndyGo.  
The following routes will be impacted:*

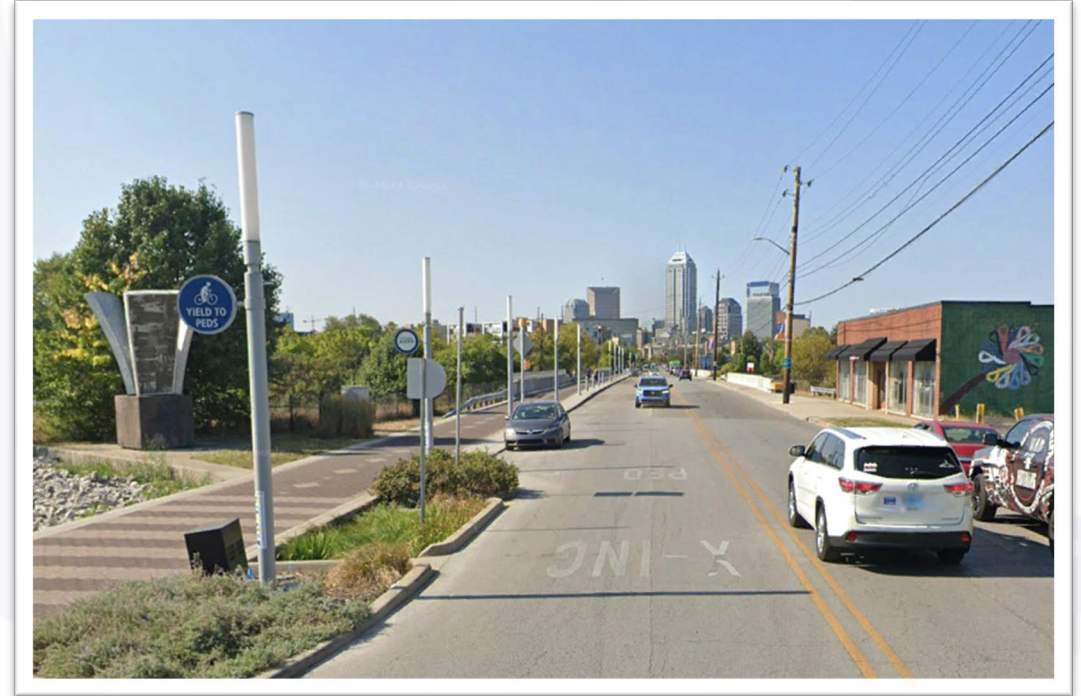
- **Virginia Detour**
  - Route 26 and Red Line
- **Fletcher Detour**
  - Route 56





# What This Means for Your Business

- Access will be maintained to nearby businesses, parks, and residences.
- Expect detour signage, traffic shifts, and occasional weekend closures on the interstate.
- Some street parking may be restricted during bridge work.
- Intersecting streets will remain open with occasional traffic shifts.





# Staying Informed



## Contact INDOT Customer Service

Mention “Virginia and Fletcher Avenue bridge improvements” in correspondence



**1-855-INDOT4U**

(463-6848)



**INDOT4U.com**

**INDOT Project Webpage:**

<https://bit.ly/VirginiaFletcherBridges>

## Greenfield District (East Central Marion County)



Scan the QR code with  
your camera phone to  
sign up for project  
updates, including dates  
of closures and detours



**INDOTEast**



**Questions?**