

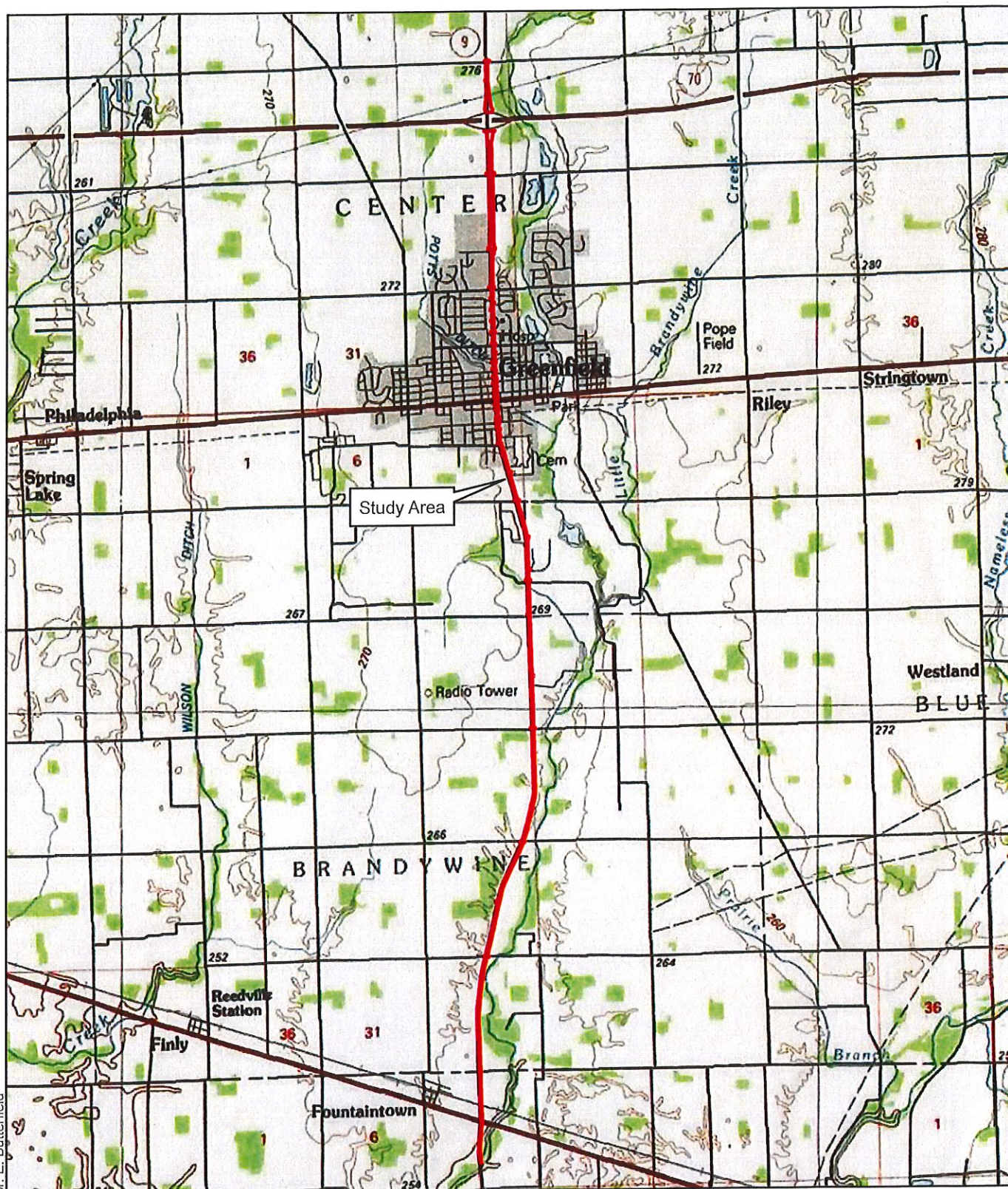


Date Saved: 9/5/2019 • Author: E. Butterfield

	Indiana Department of Transportation 		Exhibit 1 - State Location Map SR 9 HMA Overlay Hancock & Shelby Counties, Indiana
	Scale 1" = 28,000'	DES No. 1602146 & 1601961	<i>County boundaries and transportation network courtesy of the Indiana Spatial Data Portal</i>



Date Saved: 9/5/2019 - Author: E. Butterfield



Indiana Department of Transportation



Scale 1" = 6000'

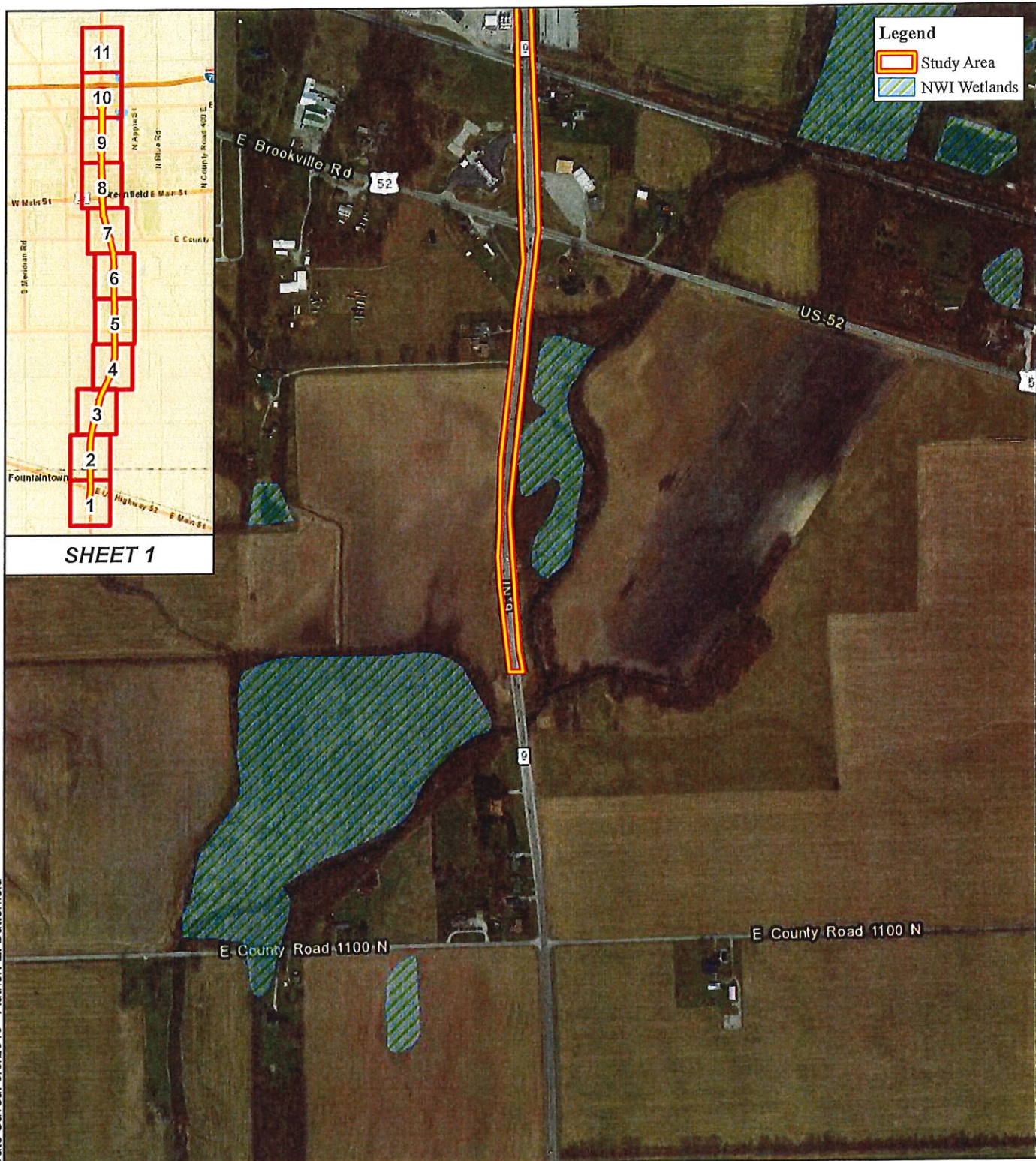
DES No.
1602146 & 1601961

USGS Project Location Map

SR 9 HMA Overlay
Hancock & Shelby Counties, Indiana

Service Layer Credits:
Copyright: © 2013 National Geographic Society, I-cubed
Greenfield & Fountaintown USGS Quadrangles Date: 1983 & 1984

SEE SHEET 2



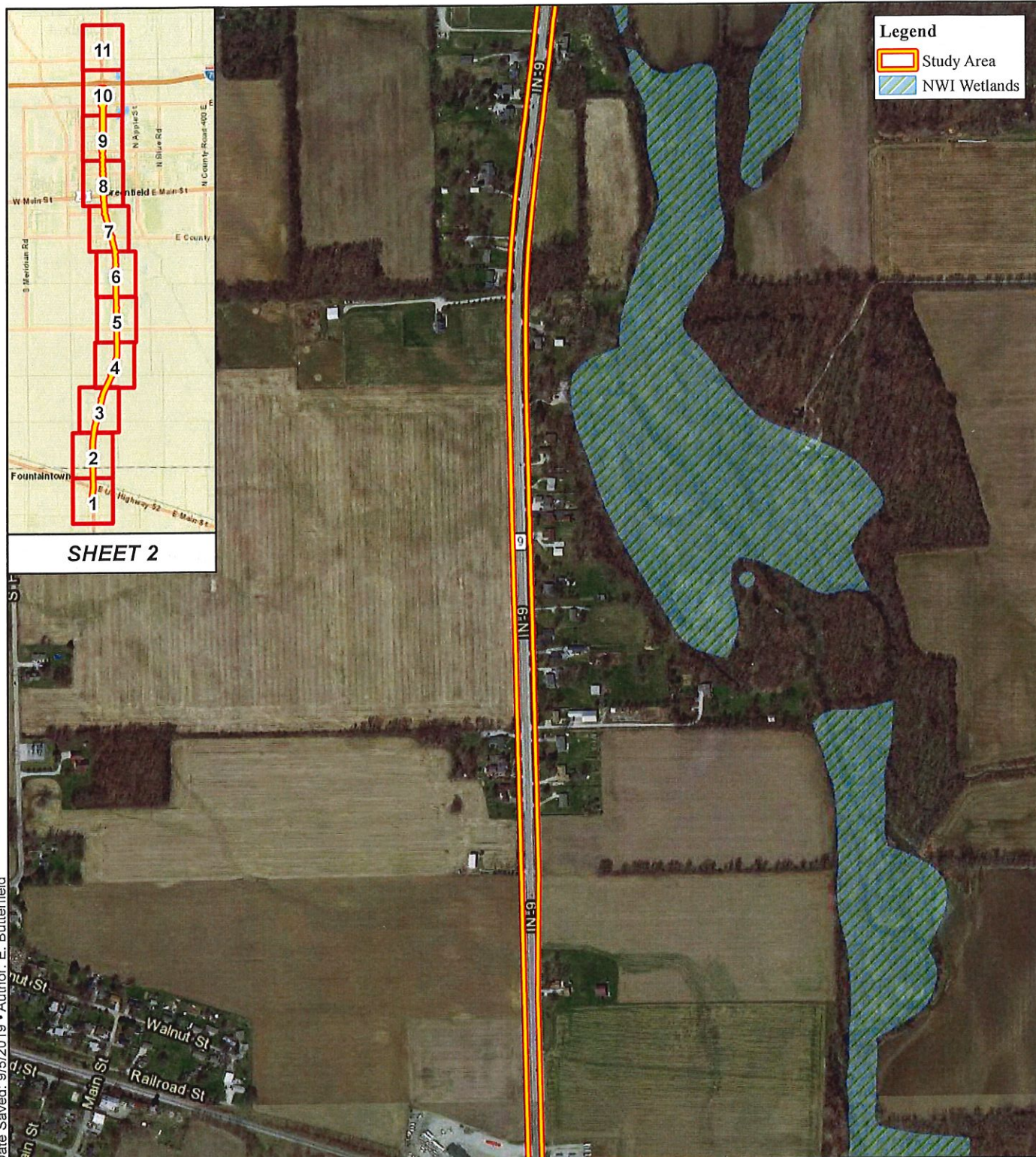
SHEET 1

Date Saved: 9/5/2019 • Author: E. Butterfield



START

	Indiana Department of Transportation 		NWI Wetlands Map SR 9 HMA Overlay Hancock & Shelby Counties, Indiana
	Scale 1" = 600'	DES No. 1602146 & 1601961	<i>Image Courtesy of the IndianaMap</i> <i>Photo Date: 2017</i> <i>NWI Wetland data courtesy of the</i> <i>National Wetlands Inventory produced by the U.S. Fish and Wildlife Service</i>

SEE SHEET 3





Legend

-  Study Area
-  NWI Wetlands

SHEET 2



Date Saved: 9/5/2019 • Author: E. Butterfield

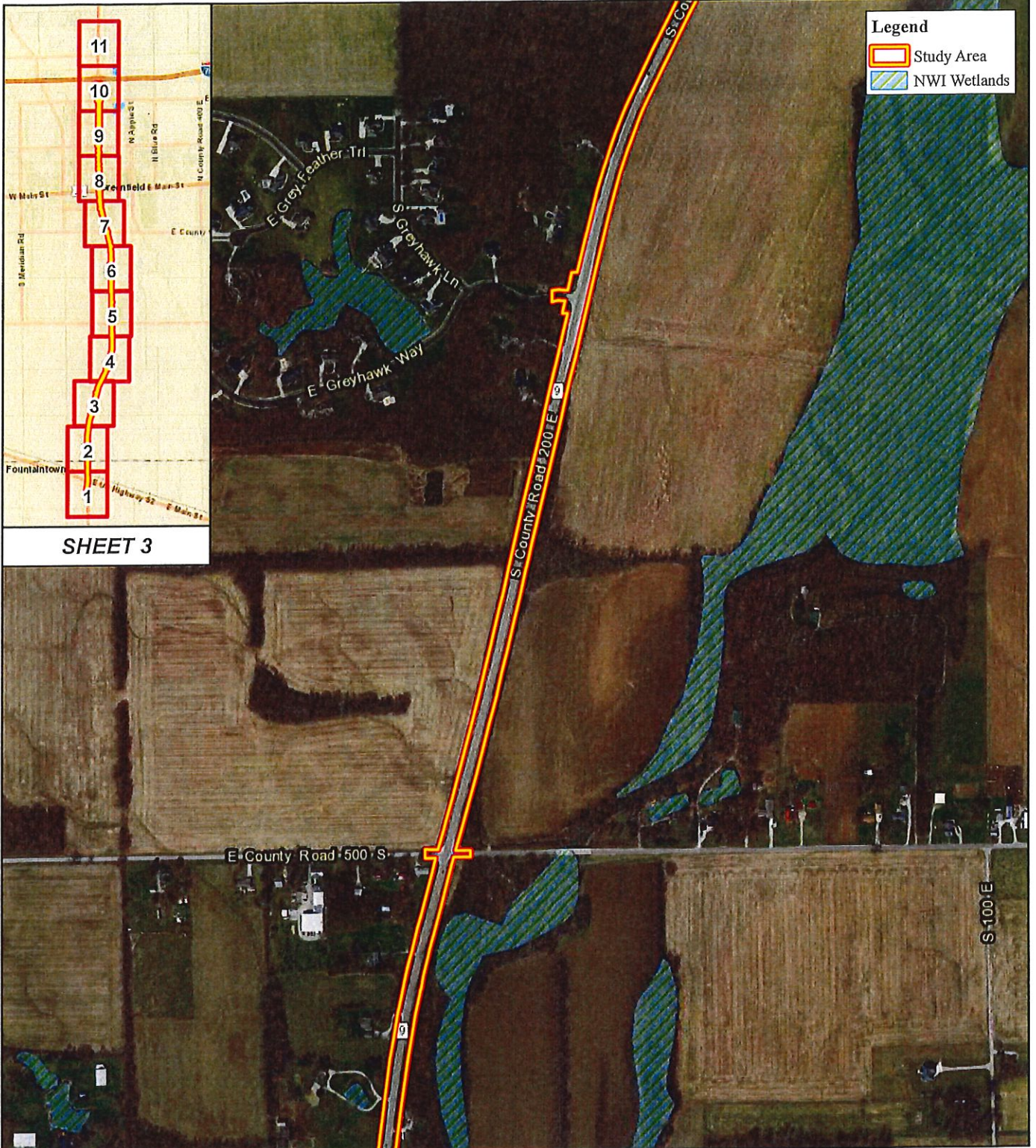
SEE SHEET 1

	Indiana Department of Transportation 	NWI Wetlands Map SR 9 HMA Overlay Hancock & Shelby Counties, Indiana
	Scale 1" = 600' DES No. 1602146 & 1601961	<small>Image Courtesy of the IndianaMap Photo Date: 2017 NWI Wetland data courtesy of the National Wetlands Inventory produced by the U.S. Fish and Wildlife Service</small>

SEE SHEET 4

Legend



-  Study Area
-  NWI Wetlands



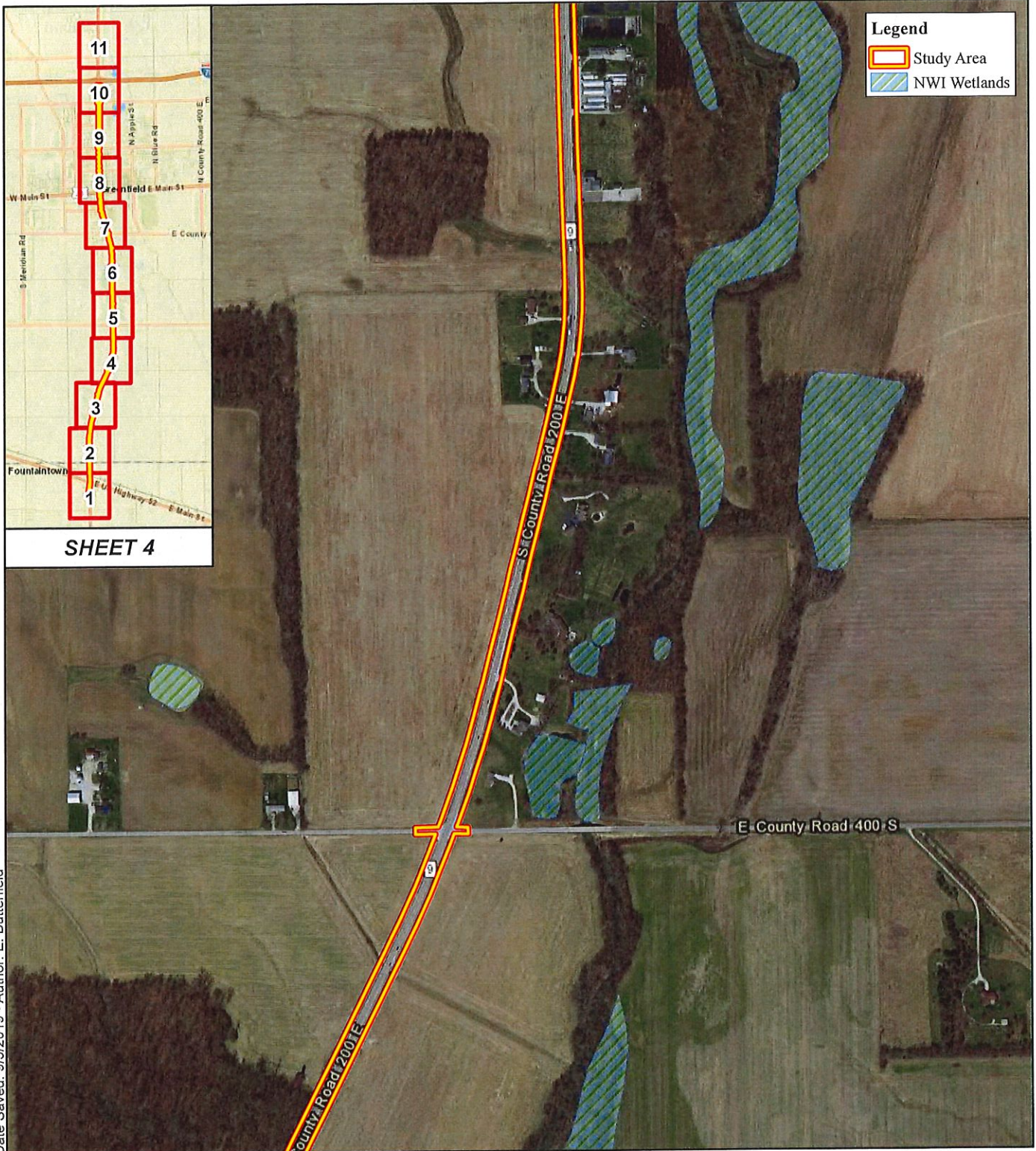
SHEET 3

Date Saved: 9/5/2019 • Author: E. Butterfield



SEE SHEET 2

	Indiana Department of Transportation 	NWI Wetlands Map SR 9 HMA Overlay Hancock & Shelby Counties, Indiana
	Scale 1" = 600' DES No. 1602146 & 1601961	<i>Image Courtesy of the IndianaMap</i> Photo Date: 2017 NWI Wetland data courtesy of the National Wetlands Inventory produced by the U.S. Fish and Wildlife Service

SEE SHEET 5





Legend

-  Study Area
-  NWI Wetlands

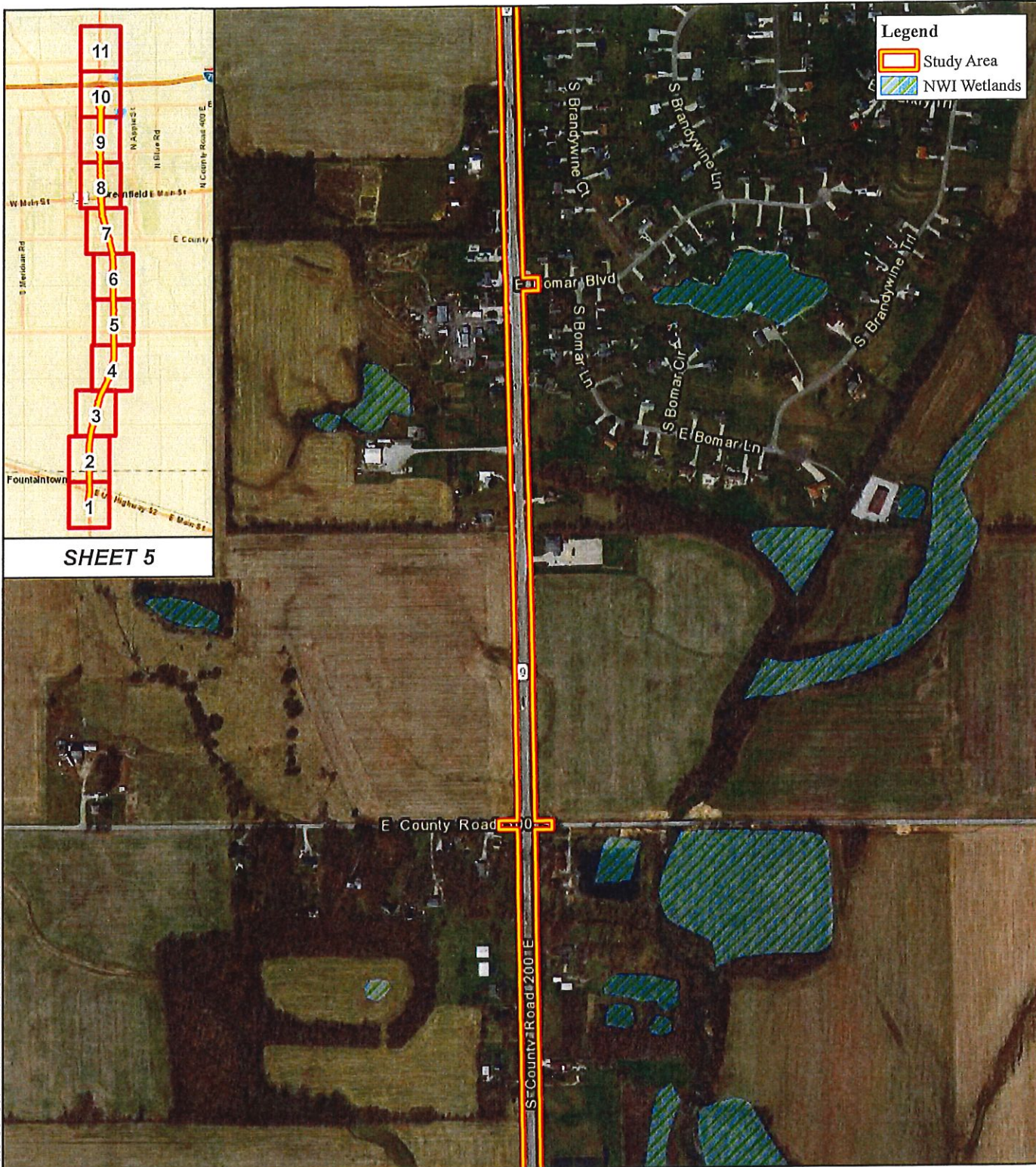
SHEET 4

Date Saved: 9/5/2019 • Author: E. Butterfield

SEE SHEET 3

	Indiana Department of Transportation 	NWI Wetlands Map SR 9 HMA Overlay Hancock & Shelby Counties, Indiana
	Scale 1" = 600' DES No. 1602146 & 1601961	<small>Image Courtesy of the IndianaMap Photo Date: 2017 NWI Wetland data courtesy of the National Wetlands Inventory produced by the U.S. Fish and Wildlife Service</small>

SEE SHEET 6



Legend

- Study Area
- NWI Wetlands

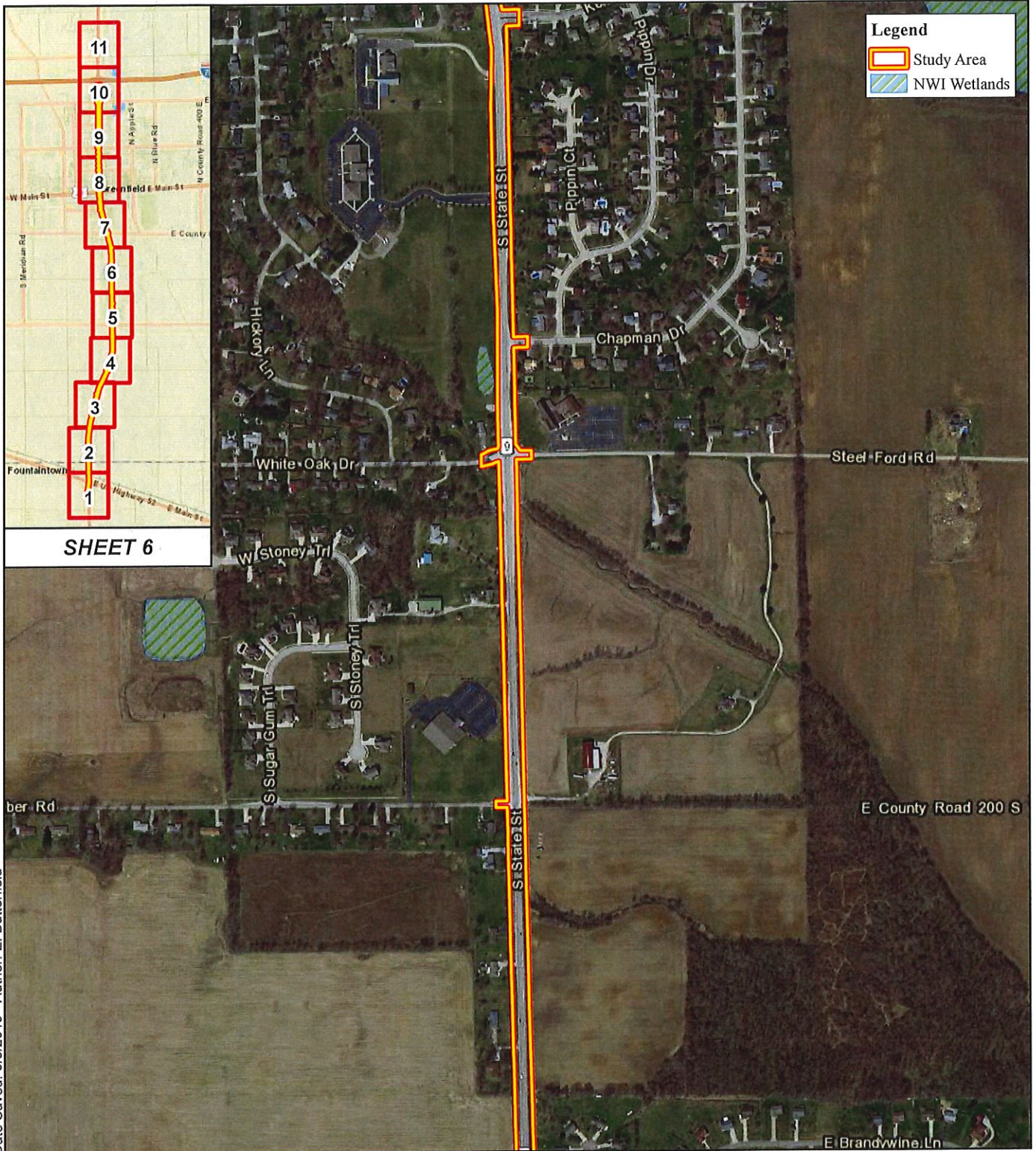
SHEET 5

SEE SHEET 4

Date Saved: 9/5/2019 • Author: E. Butterfield

	Indiana Department of Transportation 	NWI Wetlands Map SR 9 HMA Overlay Hancock & Shelby Counties, Indiana
	Scale 1" = 600' DES No. 1602146 & 1601961	<small>Image Courtesy of the IndianaMap Photo Date: 2017 NWI Wetland data courtesy of the National Wetlands Inventory produced by the U.S. Fish and Wildlife Service</small>



SEE SHEET 7



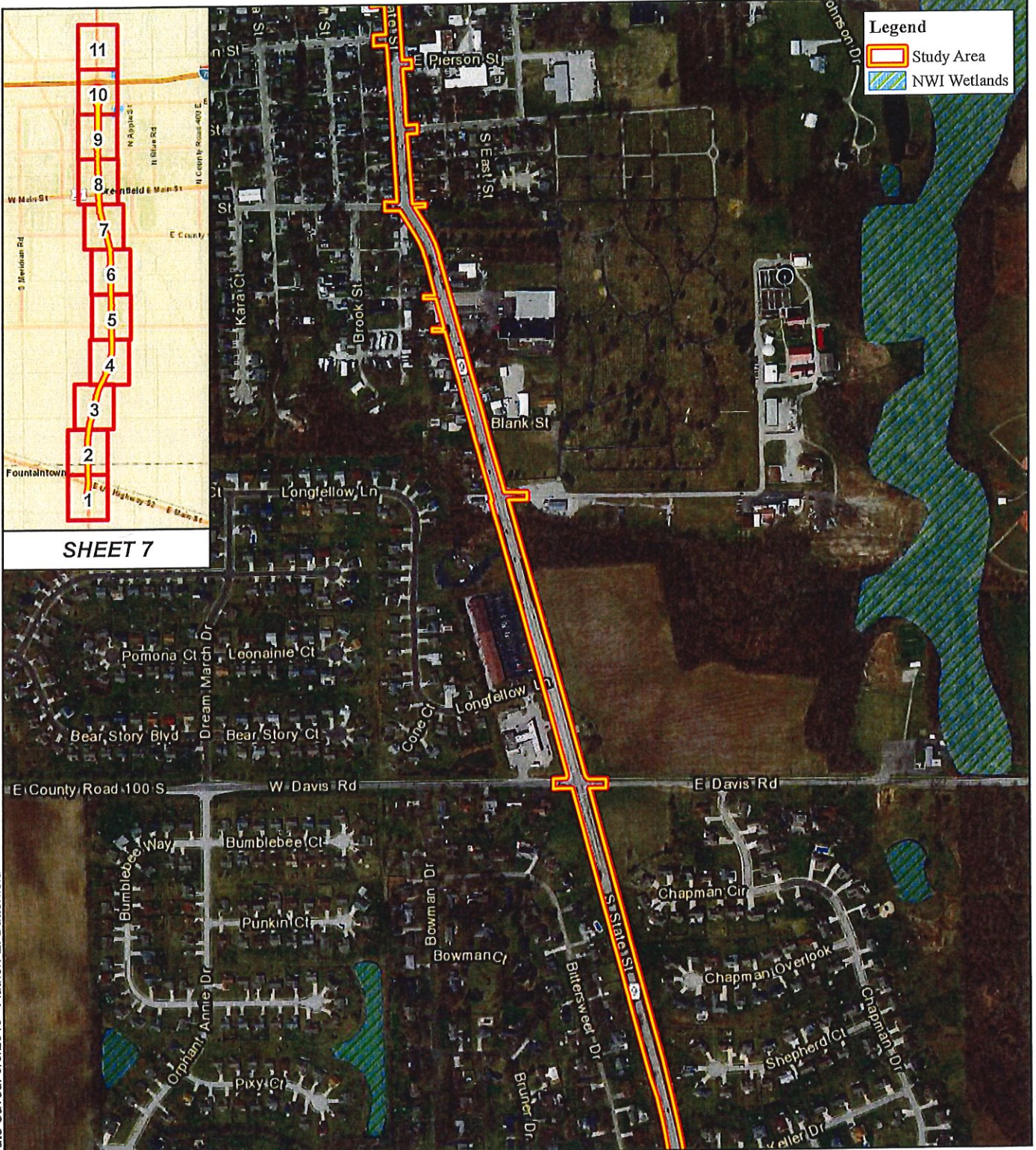
SHEET 6

SEE SHEET 5

Date Saved: 9/5/2019 • Author: E. Butterfield

	Indiana Department of Transportation 	NWI Wetlands Map SR 9 HMA Overlay Hancock & Shelby Counties, Indiana
	Scale 1" = 600' DES No. 1602146 & 1601961	<small>Image Courtesy of the IndianaMap Photo Date: 2017 NWI Wetland data courtesy of the National Wetlands Inventory produced by the U.S. Fish and Wildlife Service</small>

SEE SHEET 8





Legend

- Study Area
- NWI Wetlands

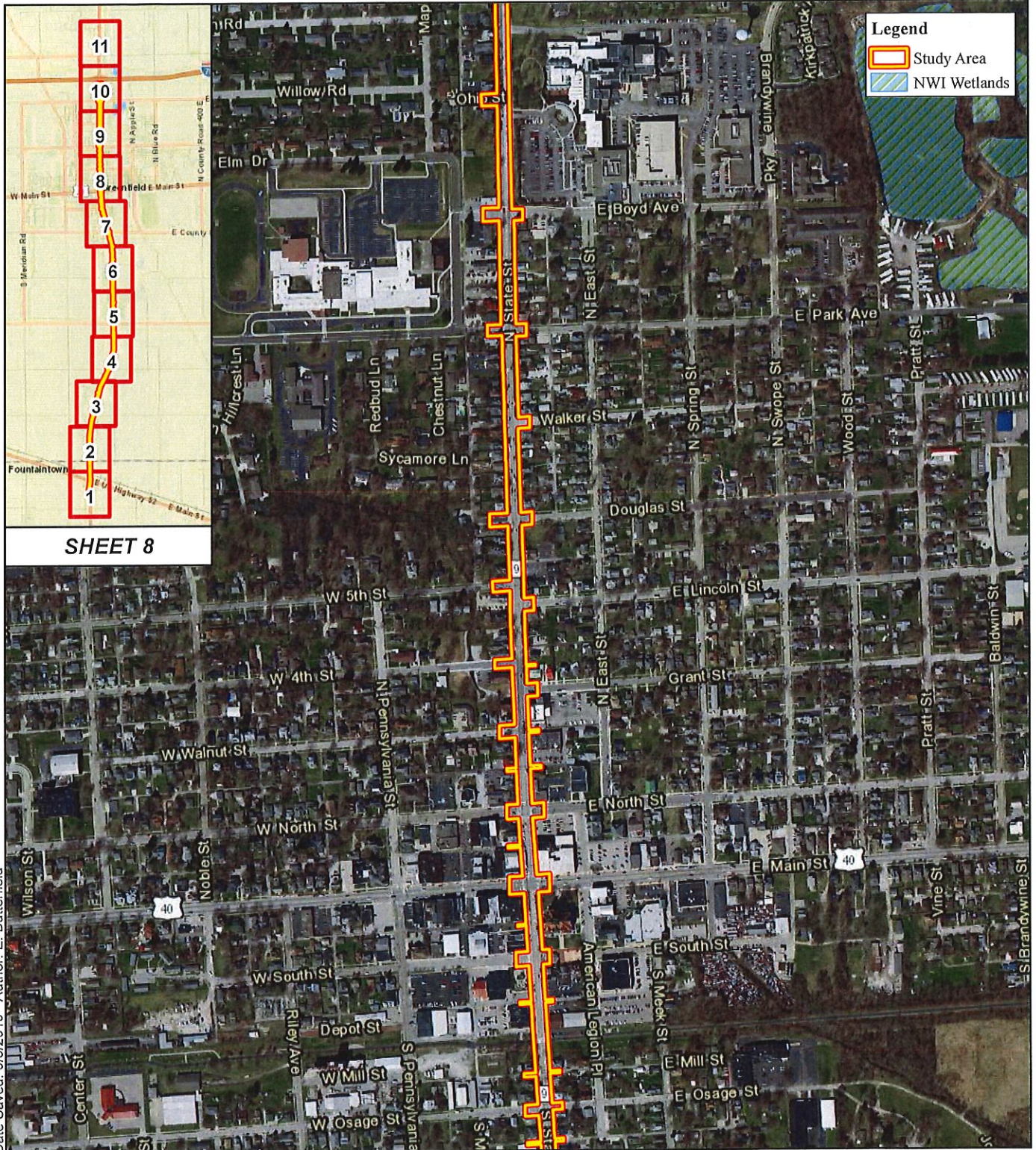
SHEET 7

SEE SHEET 6

Date Saved: 9/5/2019 • Author: E. Butterfield

	Indiana Department of Transportation 	NWI Wetlands Map SR 9 HMA Overlay Hancock & Shelby Counties, Indiana
	Scale 1" = 600'	DES No. 1602146 & 1601961



SEE SHEET 9



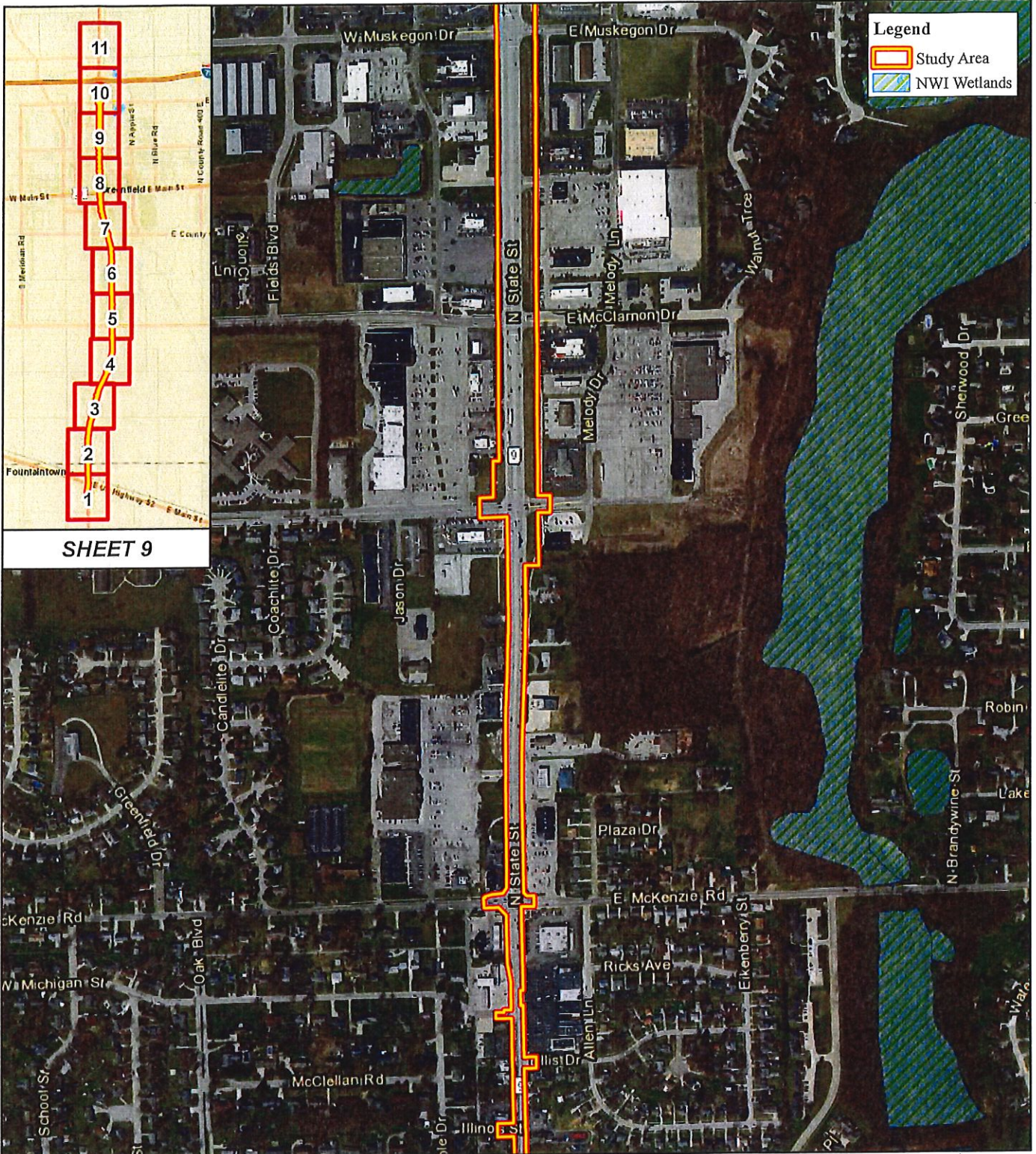
SHEET 8

SEE SHEET 7

Date Saved: 9/5/2019 • Author: E. Butterfield



	Indiana Department of Transportation 	NWI Wetlands Map SR 9 HMA Overlay Hancock & Shelby Counties, Indiana
	Scale 1" = 600' DES No. 1602146 & 1601961	Image Courtesy of the IndianaMap Photo Date: 2017 NWI Wetland data courtesy of the National Wetlands Inventory produced by the U.S. Fish and Wildlife Service

SEE SHEET 10

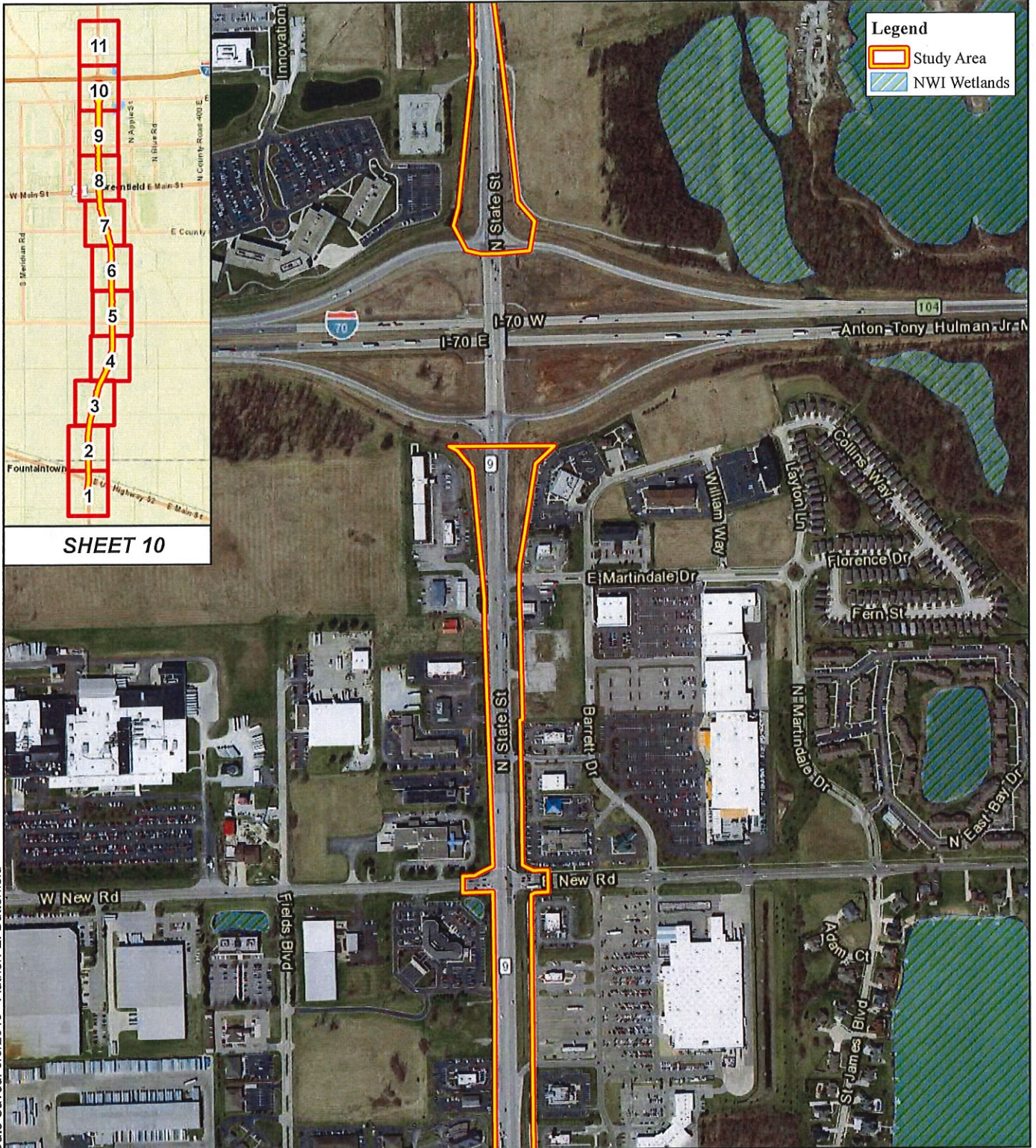


Date Saved: 9/5/2019 • Author: E. Butterfield

SEE SHEET 8

	Indiana Department of Transportation 	NWI Wetlands Map SR 9 HMA Overlay Hancock & Shelby Counties, Indiana
	Scale 1" = 600' DES No. 1602146 & 1601961	Image Courtesy of the IndianaMap Photo Date: 2017 NWI Wetland data courtesy of the National Wetlands Inventory produced by the U.S. Fish and Wildlife Service



SEE SHEET 11



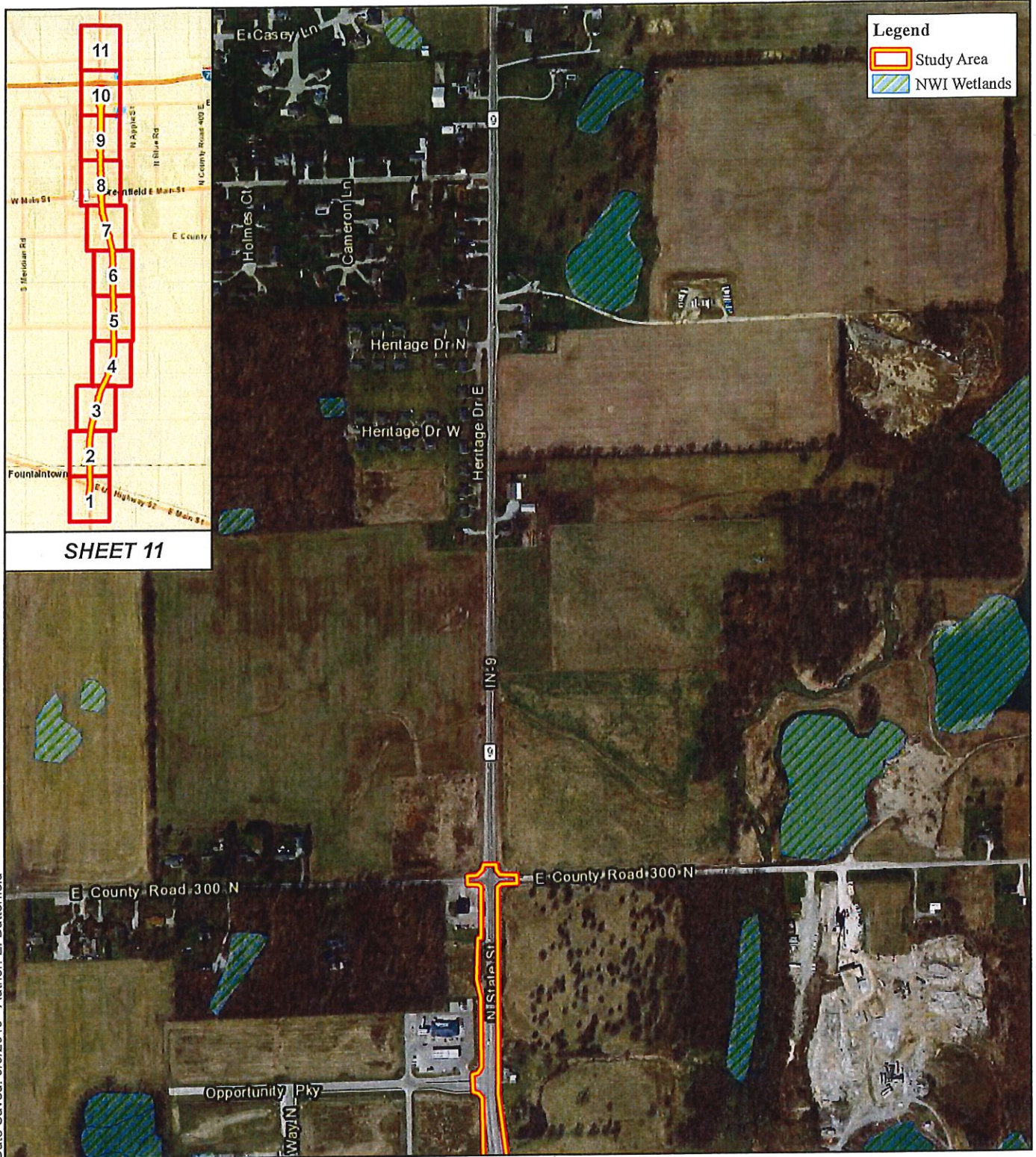
SHEET 10

Date Saved: 9/5/2019 • Author: E. Butterfield

SEE SHEET 9

	Indiana Department of Transportation 	NWI Wetlands Map SR 9 HMA Overlay Hancock & Shelby Counties, Indiana
	Scale 1" = 600' DES No. 1602146 & 1601961	Image Courtesy of the IndianaMap Photo Date: 2017 NWI Wetland data courtesy of the National Wetlands Inventory produced by the U.S. Fish and Wildlife Service

END



SHEET 11

Legend

- Study Area
- NWI Wetlands

Date Saved: 9/5/2019 • Author: E. Butterfield

SEE SHEET 10

	Indiana Department of Transportation 	NWI Wetlands Map SR 9 HMA Overlay Hancock & Shelby Counties, Indiana
	Scale 1" = 600' DES No. 1602146 & 1601961	Image Courtesy of the IndianaMap Photo Date: 2017 NWI Wetland data courtesy of the National Wetlands Inventory produced by the U.S. Fish and Wildlife Service