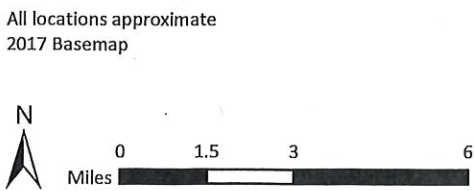
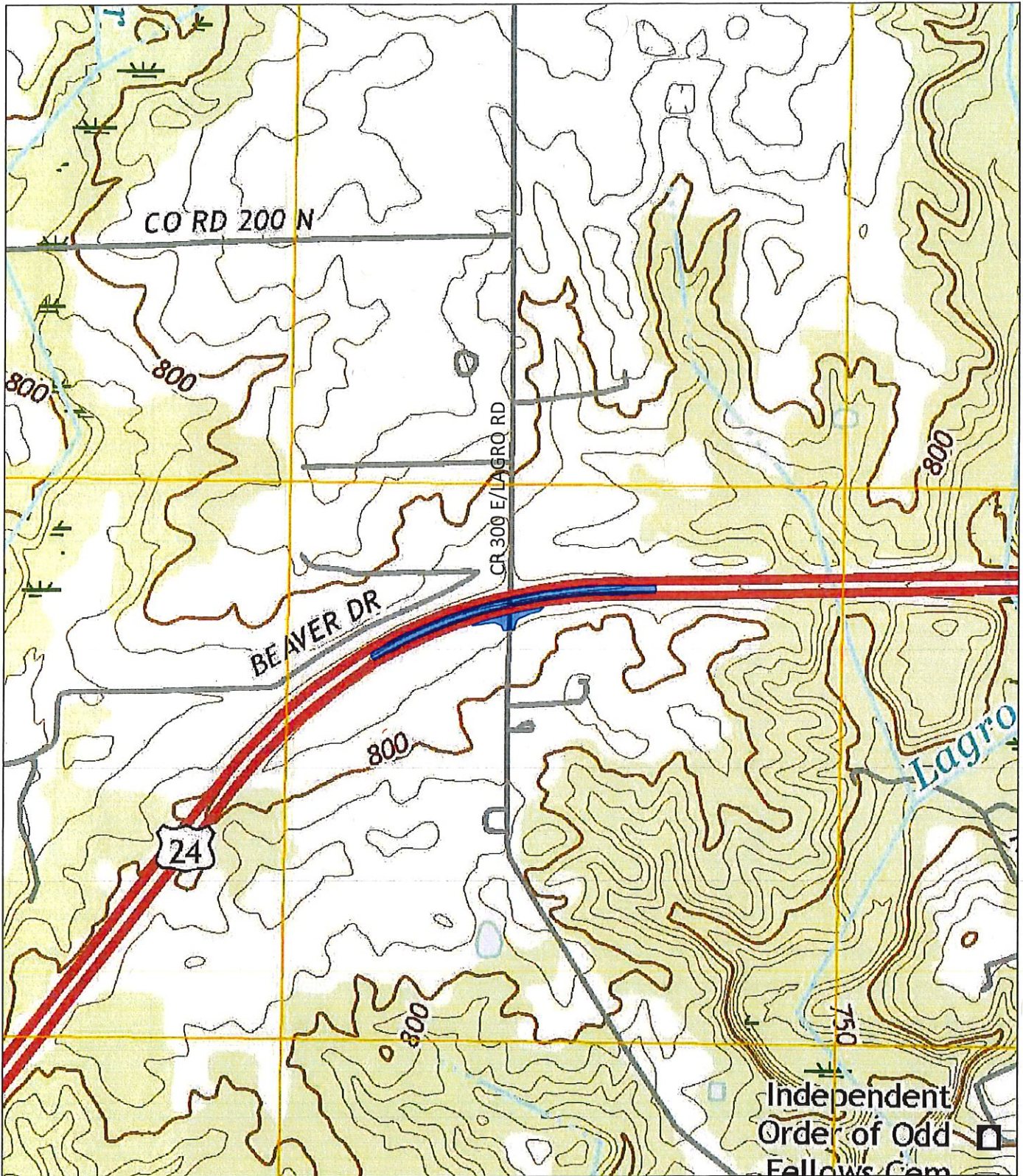


Exhibit 1 - Location Map
 U.S. 24 and N. C.R. 300 E./Lagro Road
 Intersection Improvement
 Lagro Township, Wabash County, Indiana
 Des. No. 1383236
 Metric Project No. 16-0108-12




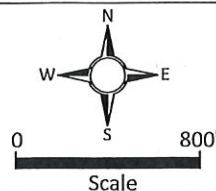


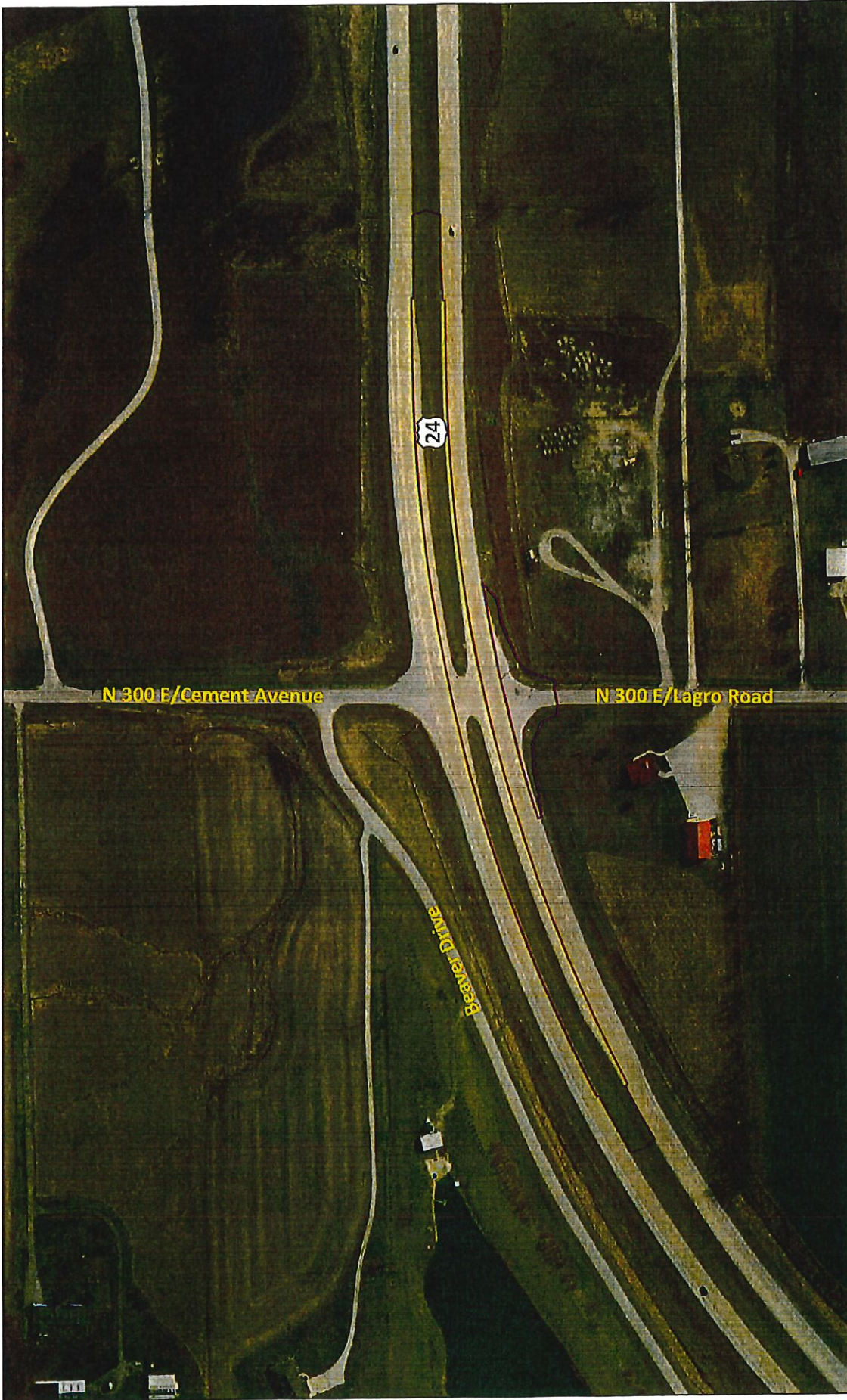
Source: https://geonames.usgs.gov/apex/f?p=262:18:0::NO:RP:P18_STATE%2CP18_SCALE%2CP18_MAP_NAME%2CP18_MAP_TYPE:IN%2C24000%2C%5CWestfield%5C%2CUS+Topo

USGS Topographic Map
U.S. 24 and C.R. 300 E/Lagro Road
Intersection Improvement
Wabash County, Indiana
Des. No. 1383236

Note: All locations are approximate

Base map:
2016 Lagro, IN
7.5 Minute Quadrangle
 Project Location



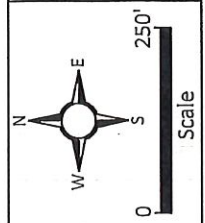


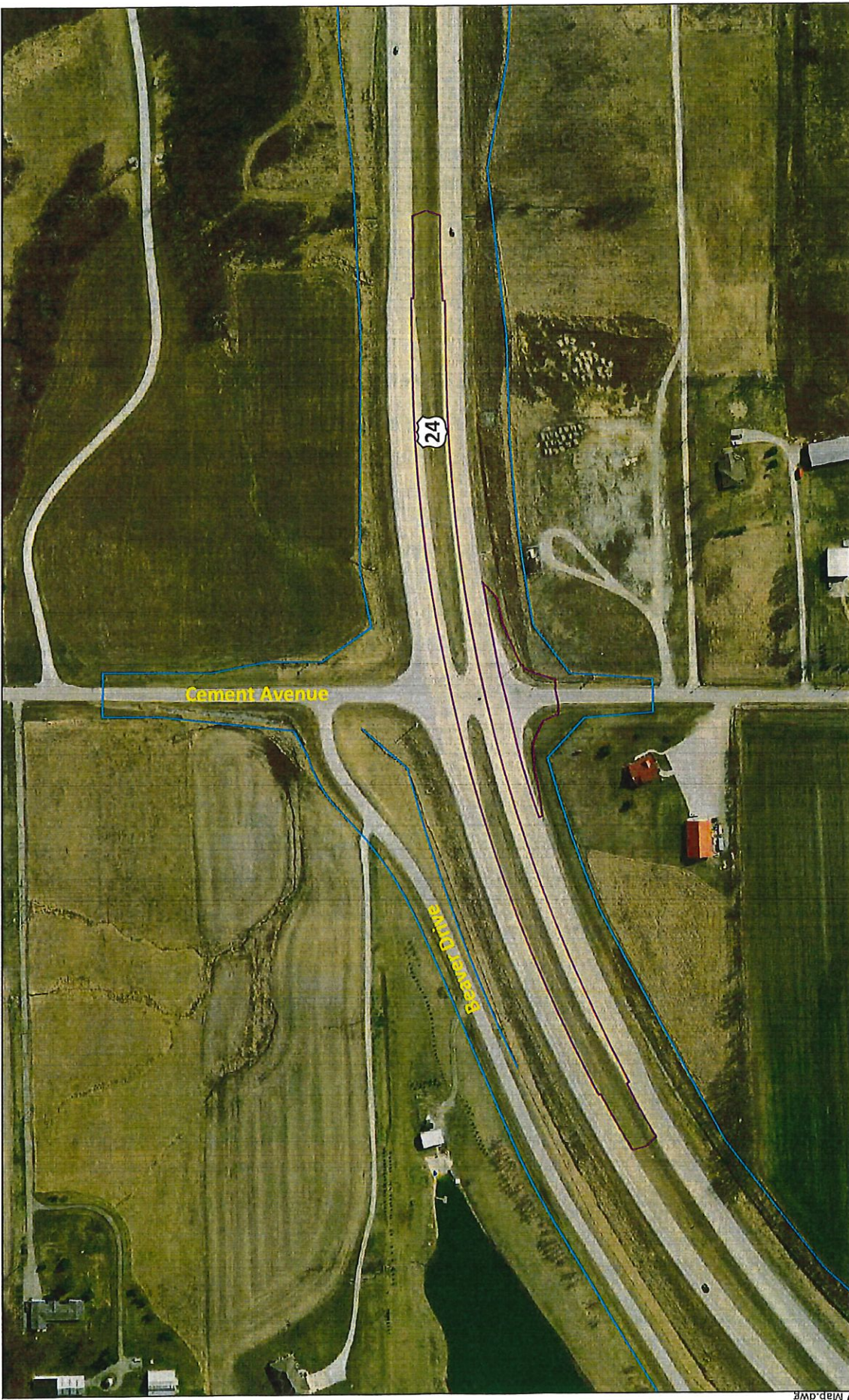
Source: <http://maps.indiana.edu/>

Note: All locations are approximate

— Construction Limits

2011 Aerial Photograph
 U.S. 24 and C.R. 300 E/Lagro Road
 Intersection Improvement
 Wabash County, Indiana
 Des. No. 1383236



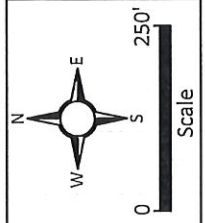


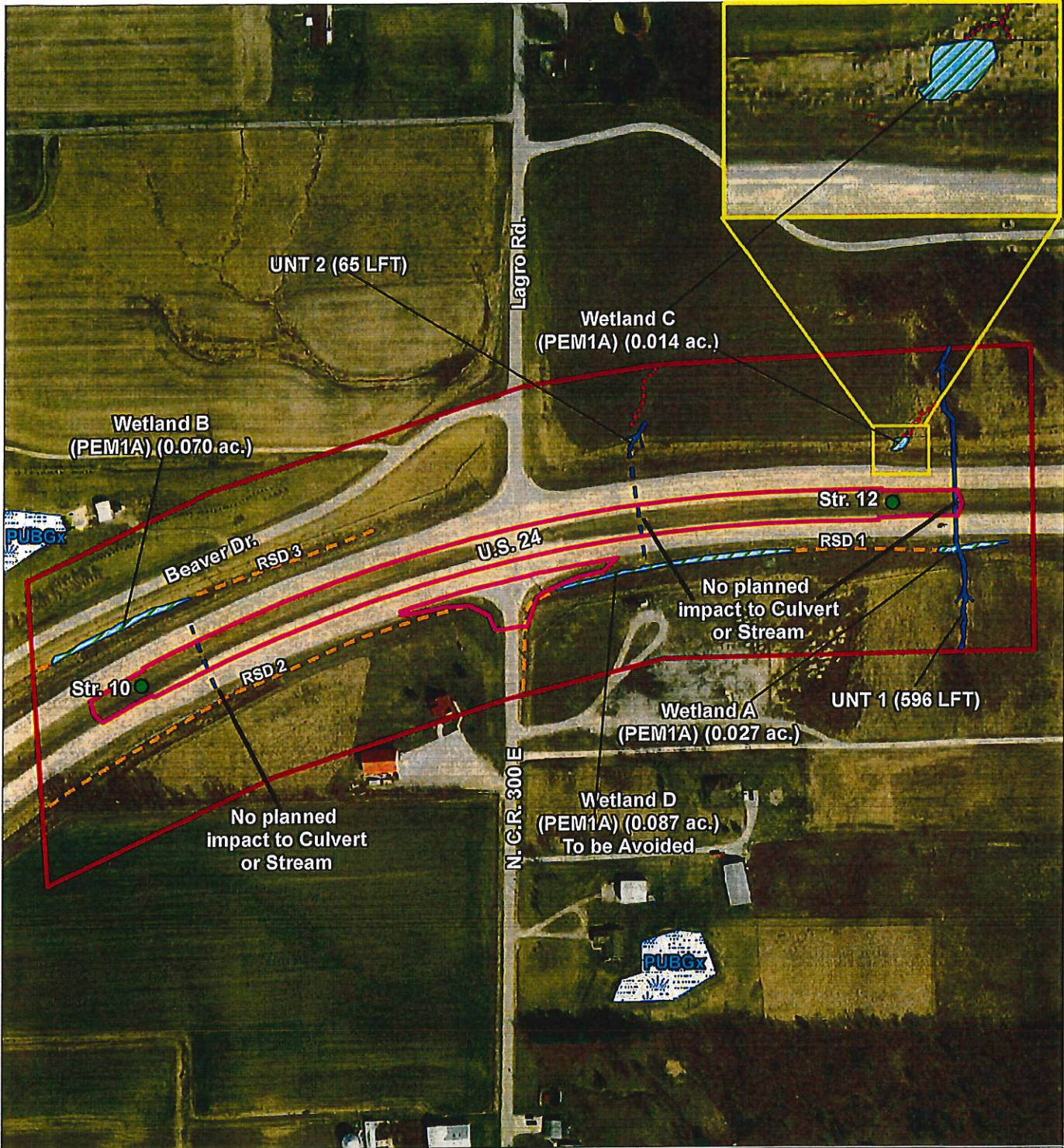
Source: <http://maps.indiana.edu/>

Right of Way Map
 U.S. 24 and C.R. 300 E/Lagro Road
 Intersection Improvement
 Wabash County, Indiana
 Des. No. 1383236

Note: All Locations are approximate

- Existing Right of Way
- Construction Limits

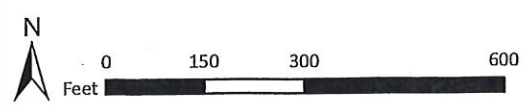


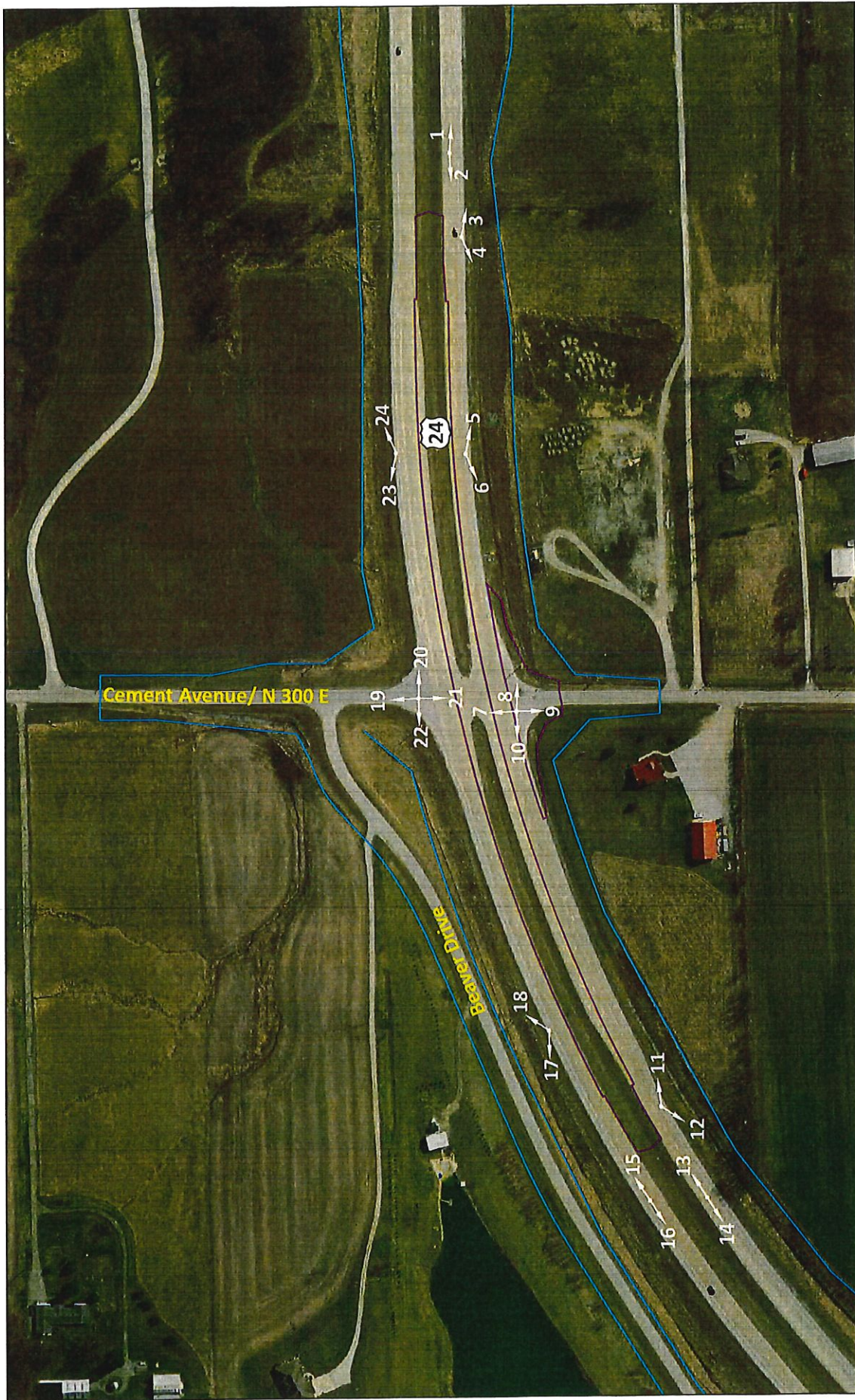


- Structure to be Replaced
- Culvert
- ▨ Wetland PEM1A
- Project Study Limits
- NHD Streams
- Construction Limits
- Stream
- ⋯ Erosional Feature
- - - Roadside Ditch (RSD)
- ▨ NWI Wetlands

U.S. 24 and N. C.R. 300 E./Lagro Road
 Intersection Improvement
 Lagro Township, Wabash County, Indiana
 Des. No. 1383236
 Metric Project No. 16-0108-12
 Map Date: 12/03/18
 Map Author: Sam Snell

All locations approximate
 Source: Indiana Spatial Data Portal (2011)



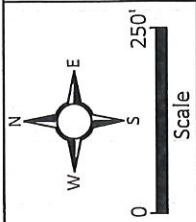


Source: <http://maps.indiana.edu/>

Photograph Location Map
 U.S. 24 and C.R. 300 E/Lagro Road
 Intersection Improvement
 Wabash County, Indiana
 Des. No. 1383236

Note: All Locations are approximate

- Existing Right of Way
- Construction Limits





1. View looking east, from the eastern project study limits at U.S. 24.



2. View looking west, from the eastern project study limits at U.S. 24.

Site Photographs - Taken 8-9-2017
U.S. 24 and C.R. 300 E/Lagro Road
Intersection Improvement
Lagro Township, Wabash County, Indiana
Des. No. 1383236
Metric Project No. 16-0108-12





3. View looking southeast at U.S. 24 right-of-way.



4. View looking southwest, at U.S. 24 right-of-way.

Site Photographs - Taken 8-9-2017
U.S. 24 and C.R. 300 E/Lagro Road
Intersection Improvement
Lagro Township, Wabash County, Indiana
Des. No. 1383236
Metric Project No. 16-0108-12





5. View looking northwest, at U.S. 24 right-of-way.



6. View looking southwest, at U.S. 24 right-of-way.

Site Photographs - Taken 8-9-2017
U.S. 24 and C.R. 300 E/Lagro Road
Intersection Improvement
Lagro Township, Wabash County, Indiana
Des. No. 1383236
Metric Project No. 16-0108-12





7. View looking north into the intersection of U.S. 24 and Cement Avenue.



8. View from the intersection of U.S. 24 and Cement Avenue, looking east at the U.S. 24 right-of-way.

Site Photographs - Taken 8-9-2017
U.S. 24 and C.R. 300 E/Lagro Road
Intersection Improvement
Lagro Township, Wabash County, Indiana
Des. No. 1383236
Metric Project No. 16-0108-12





9. View from the intersection of U.S. 24 and Cement Avenue, looking south, at Cement Avenue.



10. View from the intersection of U.S. 24 and Cement Avenue, looking west, at U.S. 24 right-of-way.

Site Photographs - Taken 8-9-2017
U.S. 24 and C.R. 300 E/Lagro Road
Intersection Improvement
Lagro Township, Wabash County, Indiana
Des. No. 1383236
Metric Project No. 16-0108-12





11. View looking southeast, at U.S. 24.



12. View looking southwest, at U.S. 24 right-of-way.

Site Photographs - Taken 8-9-2017
U.S. 24 and C.R. 300 E/Lagro Road
Intersection Improvement
Lagro Township, Wabash County, Indiana
Des. No. 1383236
Metric Project No. 16-0108-12





13. View looking southwest, from the western project study limits at U.S. 24 eastbound.



14. View looking southwest, from the western project study limits, at U.S. 24 eastbound.

Site Photographs - Taken 8-9-2017
U.S. 24 and C.R. 300 E/Lagro Road
Intersection Improvement
Lagro Township, Wabash County, Indiana
Des. No. 1383236
Metric Project No. 16-0108-12





15. View from the southern project study limits, looking south along U.S. 24 westbound.



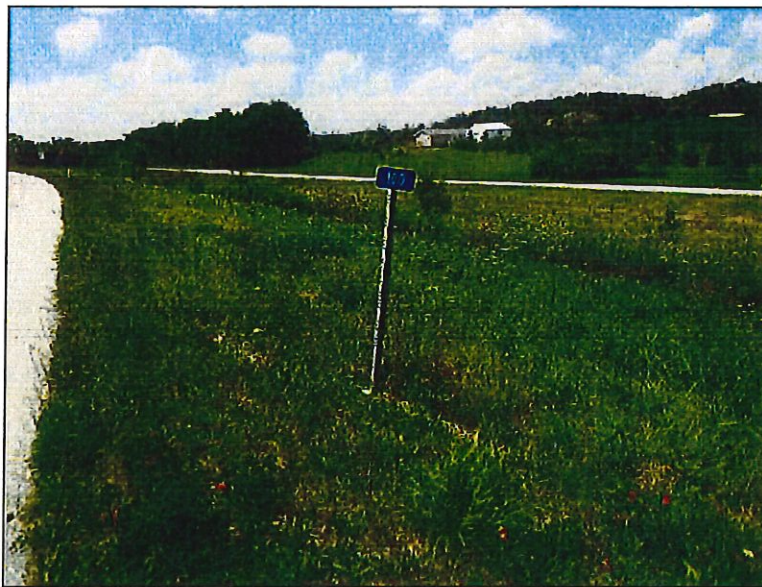
16. View looking southwest, from the western project study limits at U.S. 24 westbound.

Site Photographs - Taken 8-9-2017
U.S. 24 and C.R. 300 E/Lagro Road
Intersection Improvement
Lagro Township, Wabash County, Indiana
Des. No. 1383236
Metric Project No. 16-0108-12





17. View looking northeast, at U.S. 24 right-of-way.



18. View looking northeast, at U.S. 24, right-of-way.

Site Photographs - Taken 8-9-2017
U.S. 24 and C.R. 300 E/Lagro Road
Intersection Improvement
Lagro Township, Wabash County, Indiana
Des. No. 1383236
Metric Project No. 16-0108-12





19. View from the intersection of U.S. 24 and Cement Avenue, looking north at Cement Avenue.



20. View from the intersection of U.S. 24 and Cement Avenue, looking east at U.S. 24 right-of-way.

Site Photographs - Taken 8-9-2017
U.S. 24 and C.R. 300 E/Lagro Road
Intersection Improvement
Lagro Township, Wabash County, Indiana
Des. No. 1383236
Metric Project No. 16-0108-12





21. View looking south into the intersection of U.S. 24 and Cement Avenue.



22. View from the intersection of U.S. 24 and Cement Avenue, looking west at the U.S. 24 right-of-way.

Site Photographs - Taken 8-9-2017
U.S. 24 and C.R. 300 E/Lagro Road
Intersection Improvement
Lagro Township, Wabash County, Indiana
Des. No. 1383236
Metric Project No. 16-0108-12





23. View looking northwest, at U.S. 24 right-of-way.



24. View looking northeast, at the U.S. 24 right-of-way.

Site Photographs - Taken 8-9-2017
U.S. 24 and C.R. 300 E/Lagro Road
Intersection Improvement
Lagro Township, Wabash County, Indiana
Des. No. 1383236
Metric Project No. 16-0108-12

