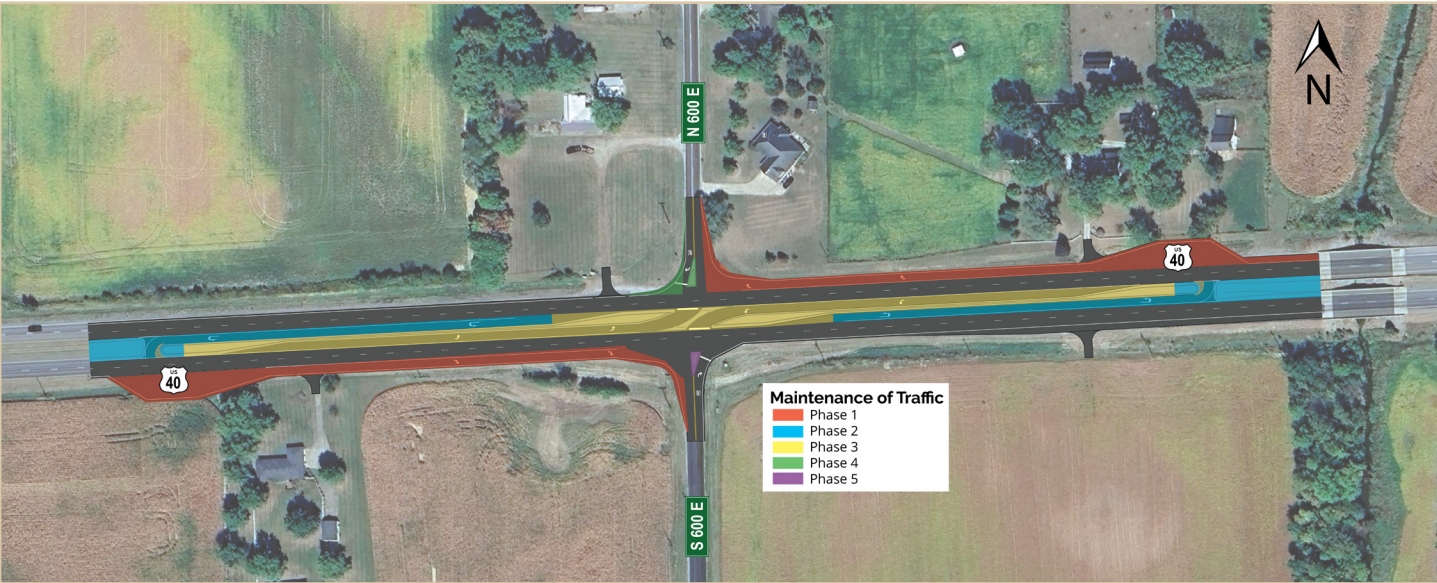


Maintenance of Traffic

Construction will be staged to keep U.S. 40 open to traffic. Short-term lane closures may be required, but one lane in each direction will remain open at all times. Access to properties and C.R. 600 East will be maintained throughout construction.



- Lane restrictions will be clearly marked with signs.**
- Driveway and property access will be maintained.**
- Temporary closures may occur during paving or median installation but will be communicated in advance.**

FAQ

Q: Why not a traffic signal?

A: RCIs reduce approximately 80% of serious injury crashes, while traffic signals reduce about 40% of those same types of crashes. RCIs are twice as effective at reducing serious injury crashes, at relatively the same cost as a signal. A signal would be unexpected on U.S. 40. Long stretches of high-speed roadway and a sudden signal can lead to t-bone crashes caused by redlight runners and rear-end collisions with stopped cars at the redlight. Four out of every five serious injury crashes would be reduced with an RCI. A traffic signal would only reduce 2 out of every five serious injury crashes.

Q: Is this the same “Jturn/Michigan left” project as was proposed before?

A: This design allows left turns from US 40 to CR 600 E. They are channelized to avoid multiple cars stacking up in the median as they do now. Wait times go down since all drivers have to turn right and nobody turning left or crossing is holding traffic up for several minutes.

How to Comment

You can drop your comment in a comment box this evening.



Project team:
812-228-9744



Eastcentral.indot.in.gov



Project team:
Nicole.Minton@lochgroup.com

Project Materials: bit.ly/US40RCI



U.S. 40 & C.R. 600 East
Intersection Improvement Project

Public Hearing | Greenfield, IN | September 23, 2025



About This Evening

Thank you for attending the Public Information Meeting for the U.S. 40 and C.R. 600 East Intersection Improvement Project. Tonight, we are sharing information on the proposed improvements at the intersection of U.S. 40 and C.R. 600 East in Hancock County (Des. No. 2301078).

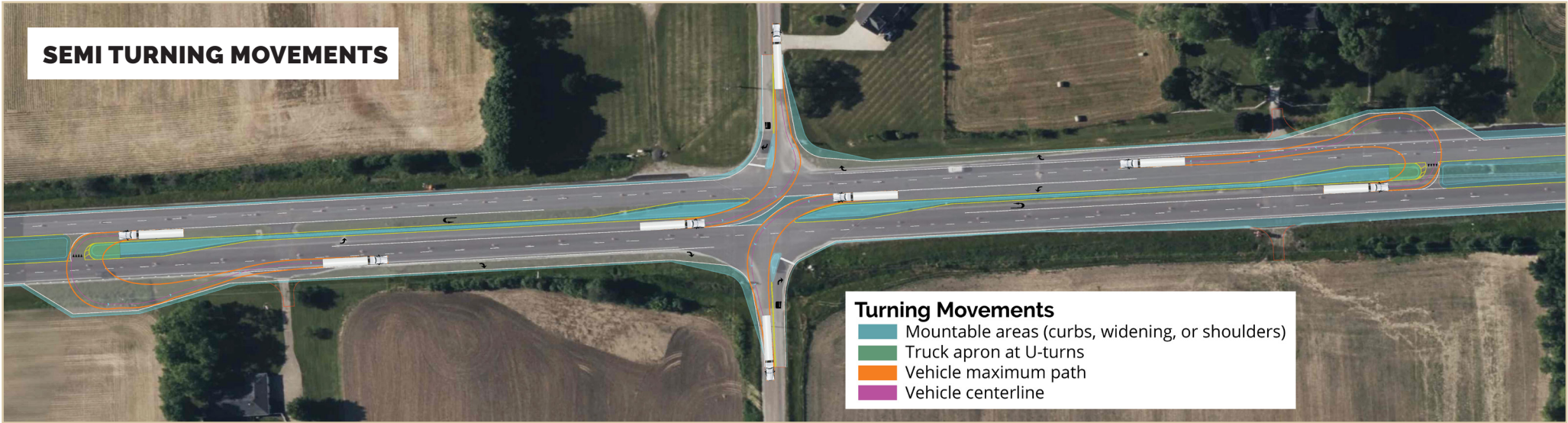
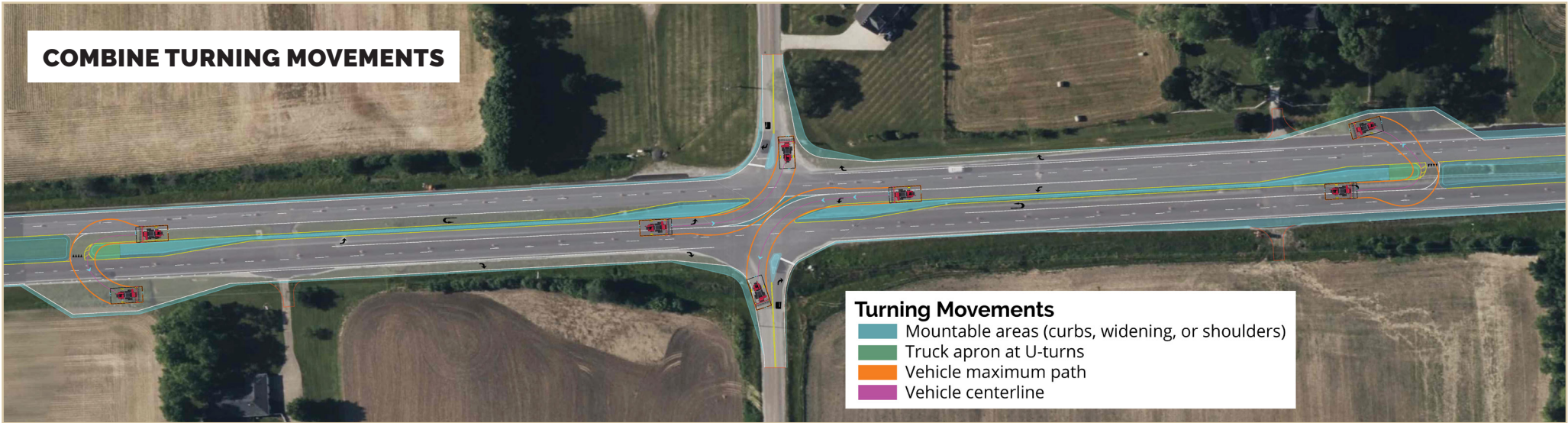
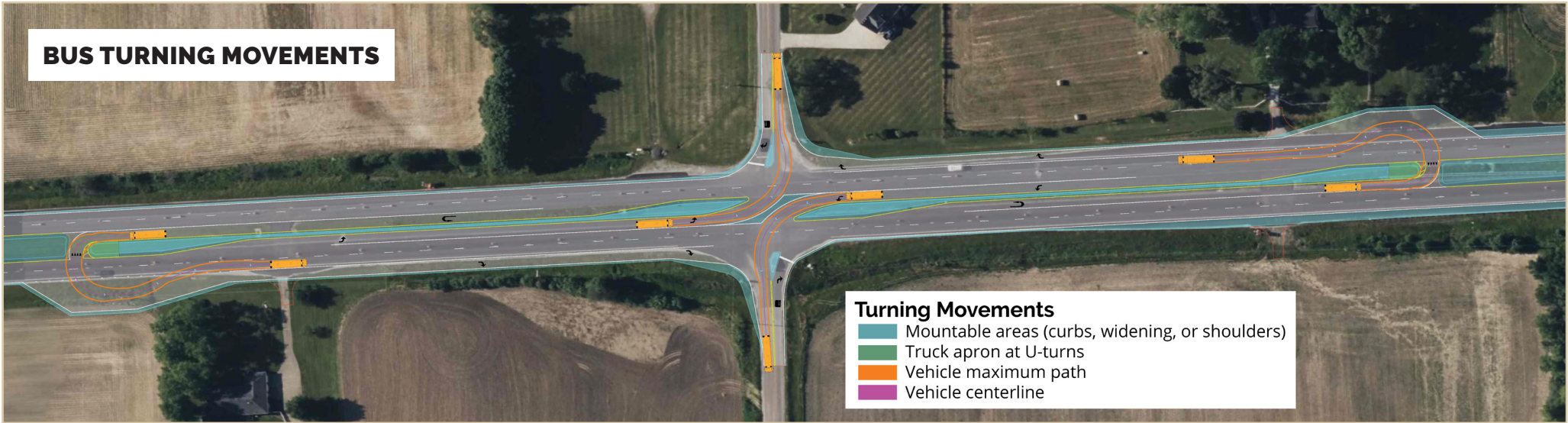
Please take time to look at the displays and ask questions. We will have a brief presentation at 6:00 p.m., followed by additional time at the displays. Please complete a comment form and return it to the project team or place it in the comment box at the sign-in table.

Purpose & Need

The project aims to address a high number of right-angle (T-bone) crashes and reduce traffic congestion on C.R. 600 East during peak travel times. Between 2019 and 2021, 18 of 26 crashes reported at this intersection were right-angle crashes. Additionally, traffic volumes on the north and south approaches of C.R. 600 East have exceeded capacity, leading to long delays and safety concerns. To address these issues, the project proposes constructing a Reduced Conflict Intersection, which is proven to reduce crashes and improve traffic operation on busy highways.



Turning Movements



What is a Reduced Conflict Intersection (RCI)?

A Reduced Conflict Intersection (RCI) is a safer alternative to a traditional intersection on a four-lane highway. Instead of crossing fast-moving traffic to reach the opposite lanes, drivers from C.R. 600 East will first turn right onto U.S. 40. If they need to go the other direction, they simply merge into the left lane and make a designated U-turn to continue on their way.

The main purpose of an RCI is to reduce – and in many cases eliminate – the serious right-angle crashes that often occur when vehicles cross over busy highways.

- Left turns from U.S. 40 onto C.R. 600 East will remain.
- Through movements from C.R. 600 East will be restricted.
- Special U-turn “loons” (expanded pavement areas) will be built to accommodate large vehicles, such as farm equipment and trucks.
- A new concrete center curb and medians will help guide traffic safely.

Project Schedule

- HEARING: NOVEMBER 2025
- ROW ACQUISITION: SPRING/FALL 2026
- BIDDING: JULY 2026
- UTILITY RELOCATIONS: FALL/WINTER 2026
- CONSTRUCTION: SUMMER 2027

