

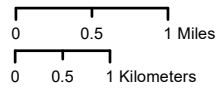
# CAMP ATTERBURY

JOINT MANEUVER TRAINING CENTER

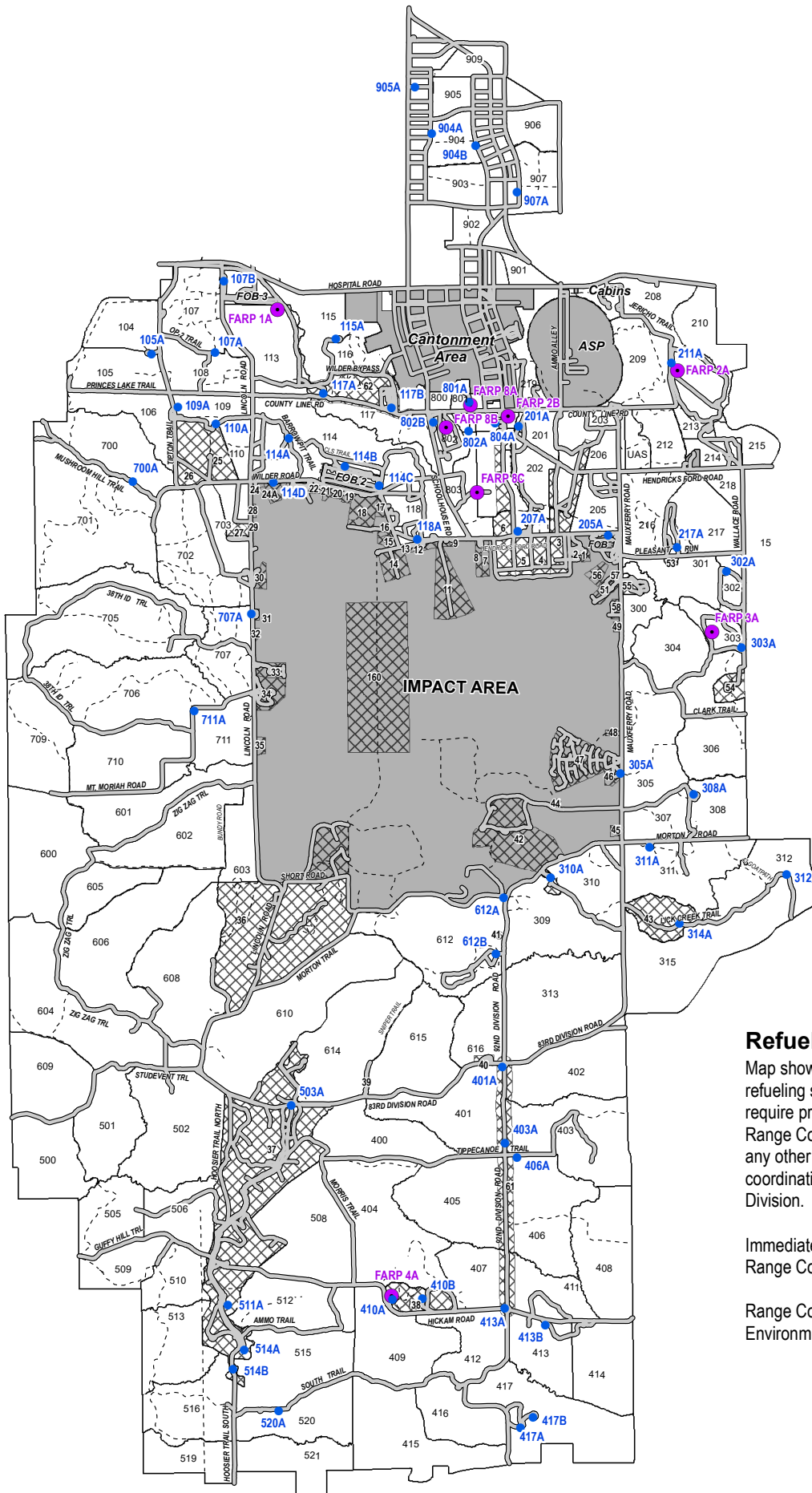
## Refueling Operations

- REFUELING POINT
- FARP
- ▨ MILITARY RANGE
- OFF LIMITS

Map scale - 1:80,000



Map Updated: 3 AUG 2021



## Refueling Information

Map shows locations of designated refueling sites. All refueling ops require prior coordination with Range Control. Refueling at any other location requires prior coordination with the Environmental Division.

Immediately report all spills to Range Control.

Range Control: 812-526-1351  
Environmental: 812-526-1499 x61255