



## Project DELTA Monthly Brief

Indiana Department of Correction

# A quick look at what you need to know



After receiving recent feedback in our post go-live survey, we have made a few changes to our communications. We are focusing on the top things you want to know: the **latest fixes in DELTA, upcoming fixes & features**, as well as **key reminders and troubleshooting tips**.

If you have other suggestions about how to improve our communications, please reach out to us at [ProjectDELTA@idoc.in.gov](mailto:ProjectDELTA@idoc.in.gov).

---

## In this edition:

- Critical fixes available in DELTA now
- Recent bug fixes that have been made
- What's coming in the next Sprint
- A way to fix slowness issues: clear your cache
- Coming soon: DELTA intranet update

---

Critical fixes  
in DELTA



## Critical fixes

Our Module Owners, SMEs, Help Desk, and vendor partners have developed the **following critical fixes that are available in DELTA now**:

- **Case Management:**
  - Can now **add multiple Release Review Templates** for a single episode

- Users can now recommend or not recommend the **system security level**
  - **Parole & Parole Board:**
    - Users will now receive an **email notification** when **the offender is released to Parole**
    - Within the Parole Module, users can now **edit Parole End Dates on the Parole Intake Checklist** screen
    - Within the Parole Board Module, a **Notification Letters** button has **been added** to notify departments of the saved Parole Board Action
  - **Visitation:**
    - Users, in the Visitation module, can **grant or deny a visitor's restriction appeal**
  - **Classification:**
    - Within the Classification Module, users can **assess the violation to determine if a reclassification is required**
    - Users can now **approve or deny a CHR request in the Classification Module** with the **removal of the Central Office Review panel**
  - **Movement:**
    - Within the Movement Module, **code 45** has been created, allowing users to **identify an offender as having lifetime parole**
    - Users, in the Movement Module, can now **identify any conflicts that might impact the bed assignments** with an updated violations list and field arrangement
    - Central Office Movement staff can edit movement dates and times to align with the actual movements
  - **Sentencing:**
    - In the Sentencing Module, users can now **verify the calculations of CPCT credits available for Technical Parole Violators**
    - Users, in the Sentencing Module, can now **verify the calculation of CPCT Credits available** is accurate for offenders who opted in to CPCT
    - Users will be able to describe an escape more accurately with **additional Escape From types and Escape From lookups** when entering information on the Arrest & Escape history screen
-

Bug updates  
in DELTA



## Bug updates

Our Module Owners, SMEs, Help Desk, and vendor partners have also been working hard to address issues with DELTA. The **following bugs fixes have been made and are available:**

- **Error Code 8977825 has been corrected** and will not appear when selecting the target date icon on the **Transportation Queue**
- You can now **view the dropdown options** in the **Approved Facility Option** dropdown on the Work/Study Rel-RCA History
- You can now view the **current job assignment on the Bed Assignments** screen
- You can now **complete the Work/Study Release** process without seeing a generated text file
- The Visitor Restriction screen is now editable
- Denial reasons on the **Visitor Information Page**, displayed in the application history is **now fully viewable**
- User will review **one email** when trying to **move an offender from Active to Parole**
- You can now view the **comments column in the hearing results** grid
- Users can select **Continue Hearing** and save without the 'based upon' checkbox automatically being selected
- The **Bed Change column** on the count letter has been **removed**

What's  
coming in the  
next sprint?



---

## Next Sprint

Our Module Owners, SMEs, Help Desk, and vendor partners are currently working on DELTA Sprint 40, set to be delivered in September. **In Sprint 40, you can expect the following updates:**

### User Stories:

1. A print button is being added to the Parole Boarding Hearing Results screen for Adult Offenders
2. A "Warrant – Detainer" Indicator is being added to the Offender Flags panel
3. An Error Message is being created when a user tries to Deprive more credits than what has been Earned to Date (CAD Screen)
4. An Error Message is being created when the User tries to Rescind more credits than what has been Restored (CAD Screen)
5. The ability to upload, store, view, and print documents on the CHR Request screen will be added

6. A new column, Adjusted TC GTC, is being added in the Action Grid on the CAD Screen to be utilized for all EDCT/CPCT Actions (Time Cuts, Deprivations, Restorations, Recissions)
7. The ability to lock in a calculation when a Case-Count is Discharged on a Release or Parole Action (Parole Violators) is coming to DELTA
8. The "Paroling Crime" field under Transmittals Panel is getting an 'Other' value
9. Triggers for the annual reviews are being updated to trigger on the 1<sup>st</sup> day of the month they are due, instead of the day they are due
10. The ability to Delete Action Queue items is coming to DELTA
11. Role permissions are being created to delete Action Queue
12. The Centurion Outbound File Data Change Request is being developed
13. The Nightly File to Union Supply is being worked on
14. SSN Value Convention is being developed for DELTA

### **Bug Fixes:**

1. Legal users will be able to update ROC
2. The error message appearing after saving external movement will be updated
3. Vice chair and Board Member names will be removed from Issue Warrant and Warrant Dashboard
4. Reporting Employee will be able to update/edit ROC while in the PASS status
5. Users will be able to submit Adult Release Checklist
6. The Inmate Status Code field will be updated
7. The offender type in external movement code will be updated
8. The error in creating new offenders and new Parole offenders will be updated
9. Lifetime Parole radio button will be enabled in parole intake list when lifetime is selected in the dropdown
10. Users will be able to save personal characteristics when there is a secondary emergency contact
11. Adding religious affiliation will enable the save button on personal characteristics
12. Action queue will generate for Class A conduct

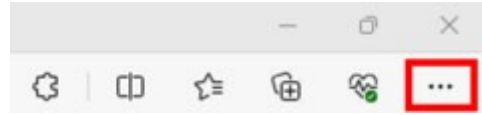


## **System slowness**

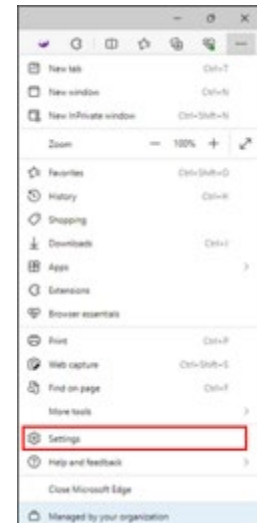
The Project DELTA team is aware that some staff are experiencing slowness with the DELTA system. The IOT and TSD Help Desk teams are continuing to investigate and monitor these reports.

**If you are experiencing system slowness, please follow the steps below to clear your cache:**

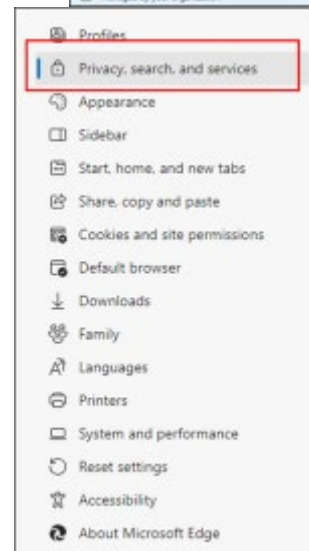
**1.** In Microsoft Edge, navigate to the “...” button in the top, right-hand corner of your browser (below the “X”) and select it.



**2.** Select “Settings” from the drop-down



**3.** Locate and click on “Privacy, search, and services” tab

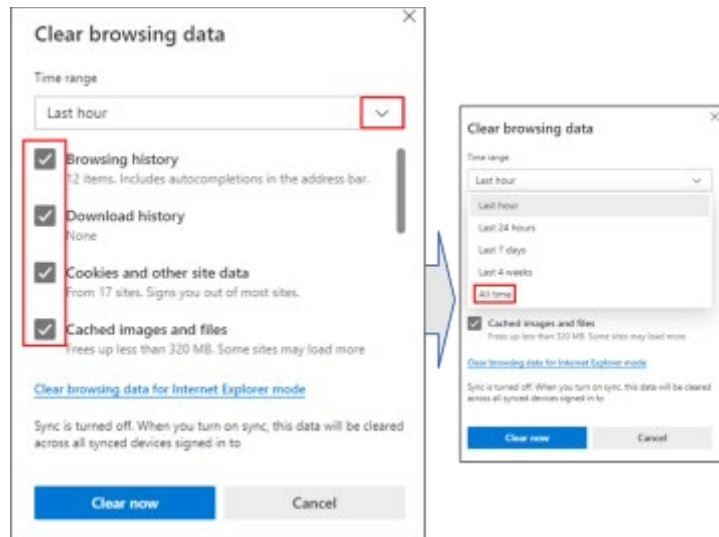


**4.** Scroll down and click on “Choose what to clear” option under the “Clear browsing data” section



5. Select what you want to clear (such as browsing history, cookies, and other site data, cached images, and files, etc.) or simply select “All time” with the drop-down menu

6. Click “Clear now” and the dialog box will disappear. You have successfully cleared your cache on Microsoft Edge.



If you are experiencing extremely high screen loading times, please submit a **Troubleshooting ticket** [here](#). We ask for your patience and understanding as we continue to investigate this.

Coming Soon!  
DELTA Intranet  
Site Update



## Intranet update

To make information on DELTA easier to access and to provide greater visibility into the updates being made, **the DELTA Intranet site is getting updated.**

Over the next month, all information related to each module, including *upcoming bug fixes, critical fixes & new features, as well as support resources, Quick Reference Guides, OJT task sheets, and videos* will be added to the DELTA Intranet site and organized by module.

*Note: Links contained within this communication may only be accessed while on the state network or when accessing via VPN. GEO Group colleagues from **Heritage Trail** can access resources [here](#) and those at **New Castle** can access resources [here](#). Should you have any questions or need additional resources, please reach out to [ProjectDELTA@idoc.in.gov](mailto:ProjectDELTA@idoc.in.gov).*