

Indiana Department of Correction
October 2019

Offender Population Report

Prepared for the Justice Reinvestment Advisory Council
and State Budget Committee

Robert Carter, Commissioner



TABLE OF CONTENTS

DOC Monthly Admissions - Adult Offenders	1
Current Adult Offenders, by County of Commit	4
Population Trend Graphs	6
DOC Adult Offenders – Facility Breakdowns, by highest Felony Classification	8
DOC Adult Offenders – Most Serious Offense, Alphabetical by highest Felony Classification	10
DOC Adult Offenders – Most Serious Offense, Ranked by highest Felony Classification	14
Appendix – DOC Facilities – Felony Breakdowns	18



INDIANA DEPARTMENT OF CORRECTION

September 2019 Admissions

by Most Serious Offense

Most Serious Offense	F1	F2	F3	F4	F5	F6	FA	FB	FC	FD	Murder	N
Accident Fail To Stop Resulting in Serious Injury or Death	1	1
Aggravated Battery	.	.	13	3	.	.	.	16
Aiding Inducing/Causing An Offense	.	.	1	2	.	.	.	1	.	.	.	4
Arson	.	.	.	4	4
Assisting A Criminal	4	4
Attempt To Commit Felony	1	1	1	1	3	.	.	1	.	.	.	8
Auto Theft, Receiving Stolen Auto Parts	1	.	.	2	1	.	4
Battery	.	.	1	.	36	2	.	.	4	.	.	43
Burglary	.	3	.	28	23	.	.	27	6	.	.	87
Carjacking	1	.	.	.	1
Child Exploitation	.	.	.	1	3	4
Child Molesting	8	.	2	13	.	.	5	5	3	.	.	36
Child Solicitation	1	1
Conspiracy	.	1	1	.	1	.	1	1	1	.	.	6
Corrupt Business Influence	2	.	.	.	1	.	.	3
Criminal Confinement	.	.	3	.	3	.	.	1	.	.	.	7
Criminal Deviate Conduct	1	1	.	.	.	2
Criminal Recklessness	3	3	.	.	.	1	.	7
Dangerous Control Of Firearm By A Child	2	2
Deal Sub Represented To Be Controlled Sub	1	1
Dealing In Cocaine Or Narcotic Drug	.	3	7	6	10	.	1	8	.	.	.	35
Dealing In Marijuana, Hash, or Hash Oil	1	1	.	.	1	.	.	3
Dealing In Methamphetamine	.	29	22	26	15	.	.	14	.	.	.	106
Dealing In a Schedule I, II, or III Controlled Substance	.	.	.	1	3	.	2	4	.	.	.	10
Dealing Possessing Look-Alike Substance	3	3
Domestic Battery	3	3
Domestic Battery With Previous Battery Conviction	14	14
Escape	4	10	14
Failure To Register As A Sex Offender	6	1	7
Firearm Within 1 Mile School Property Without License	1	.	.	1
Fleeing Scene of Accident	1	1
Forgery,Counterfeiting,Application Fraud	1	.	.	1	.	.	2
Fraud	1	1
Fraud On A Financial Institution	5	5
Gang Activity	1	1
Habitual Offender	.	.	.	1	1

Note: 2 current admissions have missing sentencing data due to processing or because of safekeeper status.

INDIANA DEPARTMENT OF CORRECTION

September 2019 Admissions

by Most Serious Offense

Most Serious Offense	F1	F2	F3	F4	F5	F6	FA	FB	FC	FD	Murder	N
Handgun Violation (Felony Within 15 Yrs)	29	29
Identity Deception	1	1
Incest	1	.	.	.	1
Intimidation	5	3	.	.	1	1	.	10
Invasion Of Privacy	1	1
Murder	9	9
Neglect Of A Dependent	1	1
Neglect Of A Dependent Resulting in Serious Injury	.	.	6	6
Neglect Of Dependent Resulting In Death	2	2
Non Support Of Dependent Child	1	1	.	.	2	3	.	7
Obliterating Handgun I.D.	1	1
Official Misconduct	1	1
Operate Vehicle After Suspended For Life	20	20
Operating Vehicle Intoxicated Resulting in Death	.	.	.	1	1	2
Operating Vehicle Intoxicated Resulting in Serious Bodily Injury	2	2	4
Operating Vehicle While Intoxicated - Prior Conviction	6	6
Operating Vehicle While Intoxicated-Previous Conviction	2	.	.	.	2	.	4
Operating Vehicle-Habit Traffic Violator	3	3
Possession Of A Controlled Substance	1	.	.	.	1	.	2
Possession Of A Destructive Device	1	1
Possession Of Child Pornography	1	1
Possession Of Cocaine Or Narcotic Drug	.	.	2	1	7	5	.	.	1	.	.	16
Possession Of Methamphetamine	.	.	10	14	20	18	.	.	1	.	.	63
Possession Of Syringes Or Needles	2	10	12
Rape	1	.	6	.	.	.	1	1	.	.	.	9
Reckless Homicide	1	.	.	1
Resisting Law Enforcement	3	.	.	.	1	.	4
Robbery	.	.	28	.	18	.	.	16	3	.	.	65
Sexual Misconduct With A Minor	.	.	.	3	3	.	.	4	1	.	.	11
Stalking	3	3
Strangulation	1	1
Synthetic Identity Deception	1	1
Theft,Receiving Stolen Property	5	13	.	.	1	4	.	23
Trafficking With An Inmate	1	.	.	.	1	.	.	2
Unlawful Firearm Poss By Serious Felon	.	.	.	28	.	.	.	5	.	.	.	33
Voluntary Manslaughter	.	2	2
	12	39	103	130	264	98	11	94	32	14	9	806

Note: 2 current admissions have missing sentencing data due to processing or because of safekeeper status.

INDIANA DEPARTMENT OF CORRECTION
ADULT OFFENDERS
by County of Commitment
for October 2019
Snapshot date: 10/01/2019

County of Commit	Department of Correction	**Community Corrections Programs	Local Jail Holds		COUNTY TOTALS
			DOC Contract	Felony Level 6 Diversions	
Adams	122	220	8	25	375
Allen	1,625	518	20	183	2,346
Bartholomew	290	137	0	48	475
Benton*	22	0	0	15	37
Blackford	58	50	1	5	114
Boone	143	388	4	18	553
Brown	38	22	0	22	82
Carroll	70	0	2	7	79
Cass	262	97	5	36	400
Clark	221	154	8	12	395
Clay	73	189	2	40	304
Clinton	169	71	7	25	272
Crawford	22	97	0	7	126
Daviess	102	128	1	3	234
Dearborn	405	87	8	34	534
Decatur	223	99	3	18	343
DeKalb	193	70	1	33	297
Delaware	388	698	4	8	1,098
Dubois	107	206	3	2	318
Elkhart	1,477	406	20	48	1,951
Fayette	185	143	3	20	351
Floyd	205	67	2	36	310
Fountain	44	69	0	12	125
Franklin*	80	0	5	8	93
Fulton	82	121	1	12	216
Gibson	132	49	2	16	199
Grant	383	115	3	7	508
Greene	143	43	1	20	207
Hamilton	318	301	0	45	664
Hancock	148	227	6	130	511
Harrison	140	81	0	14	235
Hendricks	253	141	2	75	471
Henry	250	53	0	14	317
Howard	355	382	4	62	803
Huntington	354	55	0	50	459
Jackson	239	85	3	25	352
Jasper	98	60	3	4	165
Jay	191	14	0	8	213
Jefferson	195	710	3	6	914
Jennings	107	50	2	32	191
Johnson	409	157	7	62	635
Knox	57	149	0	7	213
Kosciusko	280	134	2	88	504
LaGrange	62	20	2	29	113
Lake	1,057	348	11	62	1,478
LaPorte	371	369	2	0	742
Lawrence	226	110	1	8	345
Madison	1,314	304	11	9	1,638
Marion	5,378	5534	20	315	11,247
Marshall	214	118	10	27	369
Martin	42	30	0	6	78
Miami	68	42	9	0	119
Monroe	326	685	1	15	1,027
Montgomery	186	33	0	13	232
Morgan	206	63	2	50	321
Newton*	40	0	1	7	48
Noble	132	122	2	25	281
Ohio	51	4	1	0	56
Orange	146	12	4	5	167
Owen	56	402	2	0	460
Parke	53	5	4	6	68
Perry	86	74	0	5	165
Pike	58	38	0	9	105
Porter	232	79	2	14	327
Posey	81	37	2	10	130
Pulaski	33	18	1	9	61
Putnam	78	44	1	8	131
Randolph	49	26	0	9	84
Ripley	185	52	4	25	266
Rush	79	70	1	10	160
St Joseph	1,069	93	3	19	1,184

*Counties that are not participating in Community Corrections

** Community Corrections data as of 10/07/19

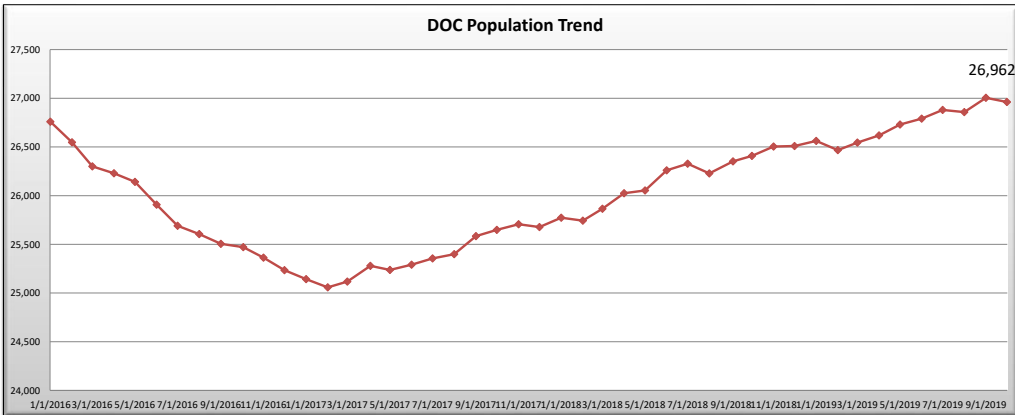
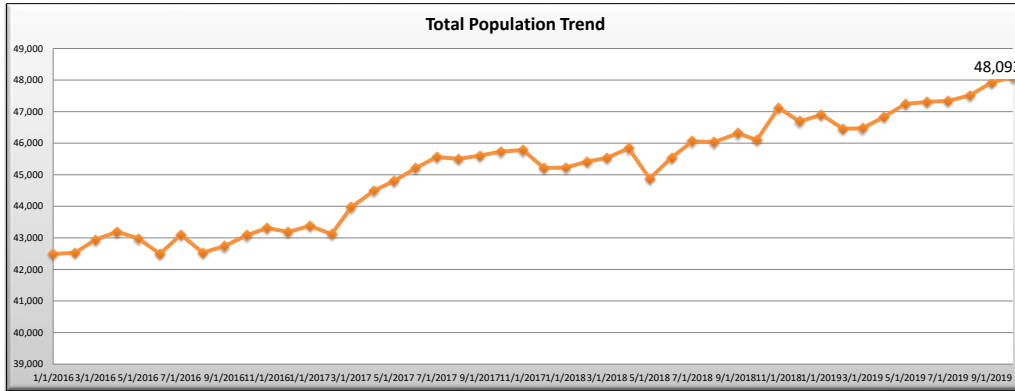
INDIANA DEPARTMENT OF CORRECTION
ADULT OFFENDERS
by County of Commitment
for October 2019
Snapshot date: 10/01/2019

County of Commit	Department of Correction	**Community Corrections Programs	Local Jail Holds		COUNTY TOTALS
			DOC Contract	Felony Level 6 Diversions	
Scott	191	145	5	21	362
Shelby	295	72	0	3	370
Spencer	40	250	5	64	359
Starke	72	56	2	1	131
Steuben	103	77	2	21	203
Sullivan	61	27	1	17	106
Switzerland	33	6	3	3	45
Tippecanoe	780	521	14	36	1,351
Tipton	15	259	0	2	276
Union	25	35	0	8	68
Vanderburgh	986	260	13	154	1,413
Vermillion	81	41	2	11	135
Vigo	441	301	2	4	748
Wabash	192	69	8	45	314
Warren	16	7	0	20	43
Warrick	80	25	0	16	121
Washington	140	126	1	17	284
Wayne	444	48	3	52	547
Wells	196	40	3	9	248
White	66	31	0	20	117
Whitley	141	283	0	9	433
Missing	28	0	0	0	28
TOTALS	26,962	18,254	307	2,570	48,093
			2,877		

*Counties that are not participating in Community Corrections
** Community Corrections data as of 10/07/19

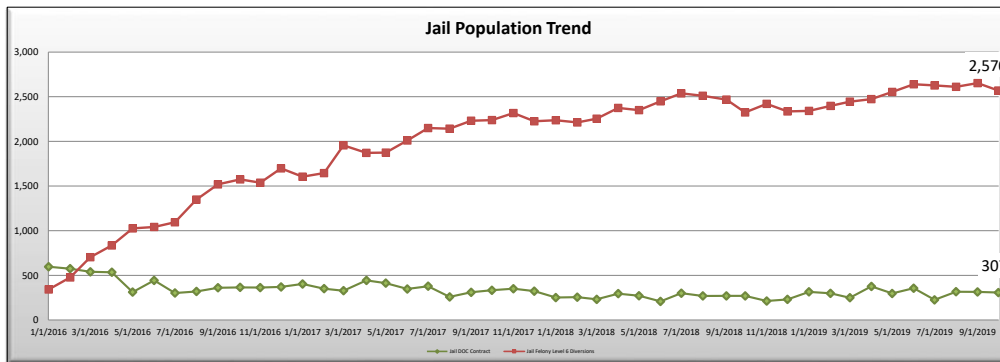
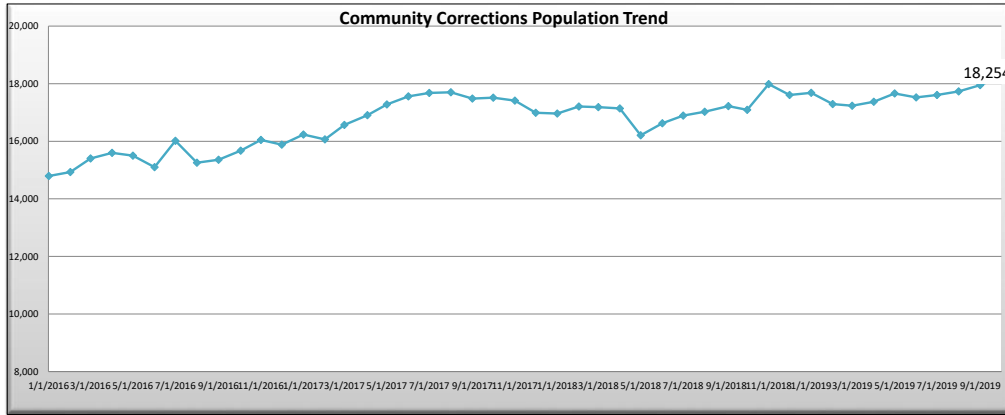
INDIANA DEPARTMENT OF CORRECTION
 ADULT OFFENDERS
 Population Trend Summary
 for October 2019
 Snapshot date: 10/01/2019

Date	DOC Adult	Community Corrections	Jail DOC Contract	Jail Felony Level 6 Diversions	Total
2/1/2018	25,743	17,207	255	2,213	45,418
3/1/2018	25,865	17,187	231	2,254	43,708
4/1/2018	26,025	17,143	295	2,374	42,976
5/1/2018	26,054	16,205	271	2,350	44,880
6/1/2018	26,260	16,623	208	2,449	45,540
7/1/2018	26,328	16,894	300	2,538	46,060
8/1/2018	26,228	17,026	269	2,510	46,033
9/1/2018	26,352	17,223	270	2,467	46,312
10/1/2018	26,409	17,093	270	2,325	46,097
11/1/2018	26,505	17,984	212	2,420	47,121
12/1/2018	26,510	17,609	230	2,336	46,685
1/1/2019	26,562	17,685	315	2,341	46,903
2/1/2019	26,468	17,291	298	2,398	46,455
3/1/2019	26,545	17,235	249	2,445	46,474
4/1/2019	26,619	17,373	376	2,473	46,841
5/1/2019	26,731	17,659	297	2,554	47,241
6/1/2019	26,791	17,521	356	2,640	47,308
7/1/2019	26,881	17,606	225	2,627	47,339
8/1/2019	26,858	17,730	316	2,611	47,515
9/1/2019	27,005	17,950	314	2,653	47,922
10/1/2019	26,962	18,254	307	2,570	48,093



INDIANA DEPARTMENT OF CORRECTION
 ADULT OFFENDERS
 Population Trend Summary
 for October 2019
 Snapshot date: 10/01/2019

Date	DOC Adult	Community Corrections	Jail DOC Contract	Jail Felony Level 6 Diversions	Total
2/1/2018	25,743	17,207	255	2,213	45,418
3/1/2018	25,865	17,187	231	2,254	43,708
4/1/2018	26,025	17,143	295	2,374	42,976
5/1/2018	26,054	16,205	271	2,350	44,880
6/1/2018	26,260	16,623	208	2,449	45,540
7/1/2018	26,328	16,894	300	2,538	46,060
8/1/2018	26,228	17,026	269	2,510	46,033
9/1/2018	26,352	17,223	270	2,467	46,312
10/1/2018	26,409	17,093	270	2,325	46,097
11/1/2018	26,505	17,984	212	2,420	47,121
12/1/2018	26,510	17,609	230	2,336	46,685
1/1/2019	26,562	17,685	315	2,341	46,903
2/1/2019	26,468	17,291	298	2,398	46,455
3/1/2019	26,545	17,235	249	2,445	46,474
4/1/2019	26,619	17,373	376	2,473	46,841
5/1/2019	26,731	17,659	297	2,554	47,241
6/1/2019	26,791	17,521	356	2,640	47,308
7/1/2019	26,881	17,606	225	2,627	47,339
8/1/2019	26,858	17,730	316	2,611	47,515
9/1/2019	27,005	17,950	314	2,653	47,922
10/1/2019	26,962	18,254	307	2,570	48,093



INDIANA DEPARTMENT OF CORRECTION
by Facility and Highest Felony Classification
for October 2019
Snapshot date: 10/01/2019

Minimum Security - Adult MALE																
Facility Name	Beds	Offenders	% Capacity	Murder	FA	FB	FC	FD	F1	F2	F3	F4	F5	F6	HO	
Chain O'Lakes	102	99	97.1%	0	10	19	2	2	0	1	5	10	40	10	0	
Edinburgh	344	338	98.3%	0	19	42	7	4	0	6	12	74	129	45	0	
Miami - MCA	204	201	98.5%	16	27	47	5	3	0	4	5	28	52	14	0	
New Castle - NCA	204	203	99.5%	0	12	32	9	1	0	7	5	32	83	22	0	
Pendleton - IRO	220	216	98.2%	22	35	33	2	1	0	3	14	28	59	19	0	
Westville - WCA	379	349	92.1%	8	27	58	14	4	0	8	25	60	113	31	1	
Wabash Valley - WVA	198	192	97.0%	0	4	20	5	2	0	8	11	54	73	15	0	
Sub-Total	1,651	1,598	96.8%	46	134	251	44	17	0	37	77	286	549	156	1	

Re-Entry & Work Release - Adult MALE																
Facility Name	Beds	Offenders	% Capacity	Murder	FA	FB	FC	FD	F1	F2	F3	F4	F5	F6	HO	
Bartholomew Co. Re-Entry	20	1	5.0%	0	0	0	0	0	0	0	0	0	1	0	0	
Chain O'Lakes Re-Entry	38	36	94.7%	0	2	3	1	1	0	0	2	6	20	1	0	
Duval Center Re-Entry	40	2	5.0%	0	1	1	0	0	0	0	0	0	0	0	0	
Lake Co. Re-Entry	10	5	50.0%	0	1	1	0	0	0	0	0	0	3	0	0	
South Bend Re-Entry	193	179	92.7%	13	34	36	7	1	0	0	12	23	37	16	0	
VOA/Hope Hall Re-Entry	25	18	72.0%	0	1	6	1	0	0	0	1	5	3	1	0	
Starke Co. PI - TC	48	36	75.0%	0	1	4	1	0	0	0	4	5	16	5	0	
Sub-Total	374	277	74.1%	13	40	51	10	2	0	0	19	39	80	23	0	

Medium Security - Adult MALE																
Facility Name	Beds	Offenders	% Capacity	Murder	FA	FB	FC	FD	F1	F2	F3	F4	F5	F6	HO	
Branchville	1,485	1,451	97.7%	18	60	233	42	8	0	82	194	284	401	129	0	
Correctional Industrial	1,495	1,458	97.5%	73	232	336	42	4	11	132	202	145	215	66	0	
Indiana State Prison ISO	385	380	98.7%	30	65	55	15	3	0	4	40	46	102	20	0	
Plainfield	1,696	1,500	88.4%	65	130	315	65	11	0	52	165	217	371	108	1	
Putnamville	2,510	2,155	85.9%	55	118	413	75	9	0	86	241	363	623	172	0	
Heritage Trail	868	858	98.8%	1	7	75	29	8	0	23	101	148	369	97	0	
Westville	2,941	2,514	85.5%	62	225	413	115	11	1	59	297	391	763	176	1	
New Castle	2,431	2,392	98.4%	13	730	627	152	4	21	9	209	417	202	8	0	
Sub-Total	13811	12708	92.0%	317	1,567	2,467	535	58	33	447	1,449	2,011	3,046	776	2	

Note: 31 Offenders have missing sentencing data due to processing, misdemeanor, or because of safekeeper status.

INDIANA DEPARTMENT OF CORRECTION
by Facility and Highest Felony Classification
for October 2019
Snapshot date: 10/01/2019

Maximum Security - Adult MALE															
Facility Name	Beds	Offenders	% Capacity	Murder	FA	FB	FC	FD	F1	F2	F3	F4	F5	F6	HO
Miami	2,984	2,922	97.9%	231	464	604	53	3	163	414	467	244	240	39	0
Indiana State Prison	2,067	1,999	96.7%	693	609	260	20	3	126	93	69	56	58	12	0
Pendleton	1,449	1,417	97.8%	464	443	171	13	0	87	63	76	37	53	10	0
Pendleton Treatment Unit	214	168	78.5%	30	39	42	7	0	6	4	10	9	18	3	0
ISR Secure Housing Unit	69	51	73.9%	17	7	17	1	0	1	1	3	2	1	1	0
New Castle Annex	486	417	85.8%	45	108	113	16	0	4	13	42	30	38	8	0
New Castle Mental Health	128	116	90.6%	16	22	28	5	1	3	2	10	7	21	1	0
WCU Secure Housing Unit	110	92	83.6%	14	22	24	3	0	0	1	8	5	11	4	0
Wabash Valley	1,785	1,711	95.9%	533	587	219	14	2	97	56	79	51	62	11	0
WVS Secure Housing Unit	216	195	90.3%	34	33	54	6	0	4	7	16	17	21	3	0
Sub-Total	9,508	9,088	95.6%	2,077	2,334	1,532	138	9	491	654	780	458	523	92	0

Intake Facility - Adult MALE															
Reception Diag. Center	695	625	89.9%	9	7	49	12	12	12	33	84	92	238	77	0
Sub-Total	695	625	89.9%	9	7	49	12	12	12	33	84	92	238	77	0

Minimum Security & Re-Entry - Adult FEMALE															
Facility Name	Beds	Offenders	% Capacity	Murder	FA	FB	FC	FD	F1	F2	F3	F4	F5	F6	HO
Madison	740	689	93.1%	4	24	73	19	2	0	44	90	157	204	72	0
Jefferson Co. Re-Entry	72	69	95.8%	1	5	14	1	1	0	1	8	13	21	4	0
Crane House	45	22	48.9%	0	0	2	1	0	0	0	1	9	5	4	0
Sub-Total	857	780	91.0%	5	29	89	21	3	0	45	99	179	230	80	0

Medium Security - Adult FEMALE															
Facility Name	Beds	Offenders	% Capacity	Murder	FA	FB	FC	FD	F1	F2	F3	F4	F5	F6	HO
Rockville	1,041	976	93.8%	51	103	104	23	6	23	103	145	126	203	89	0
Sub-Total	1,041	976	93.8%	51	103	104	23	6	23	103	145	126	203	89	0

Maximum Security - Adult FEMALE															
Women's Prison	727	690	94.9%	70	64	73	15	6	15	56	82	87	147	75	0
Rockville Intake	212	189	89.2%	1	2	14	2	1	2	17	23	30	56	41	0
Sub-Total	939	879	93.6%	71	66	87	17	7	17	73	105	117	203	116	0

TOTAL	28,876	26,931	93.3%	2,589	4,280	4,630	800	114	576	1,392	2,758	3,308	5,072	1,409	3
--------------	---------------	---------------	--------------	--------------	--------------	--------------	------------	------------	------------	--------------	--------------	--------------	--------------	--------------	----------

INDIANA DEPARTMENT OF CORRECTION
ADULT OFFENDERS
by Most Serious Offense, Alphabetical
for October 2019
Snapshot date: 10/01/2019

Most Serious Offense	Murder	FA	FB	FC	FD	F1	F2	F3	F4	F5	F6	HO	Total
Accident Fail To Stop Resulting in Serious Injury or Death	.	.	1	1	21	.	.	23
Aggravated Battery	.	.	159	.	.	9	.	344	512
Aiding Inducing/Causing An Offense	.	49	60	4	.	11	24	58	33	49	4	.	292
Arson	.	14	48	.	.	.	3	2	76	.	1	.	144
Assisting A Criminal	.	.	.	4	14	1	.	19
Assisting Suicide	.	.	.	1	1
Attempt To Commit Felony	.	475	112	7	.	112	41	90	23	74	6	.	940
Attempted Murder	1	1
Auto Theft, Receiving Stolen Auto Parts	.	.	.	8	3	24	56	.	91
Battery	.	24	37	62	1	.	8	39	4	636	54	.	865
Battery By Bodily Waste	.	.	1	.	2	3
Battery To A Child Causing Death	.	4	4
Bribery	5	.	.	5
Burglary	.	252	872	135	.	30	142	48	965	593	.	.	3,037
Carjacking	.	.	31	31
Carrying Handgun Without License	.	.	.	6	6
Causing Suicide	.	.	1	1
Check Deception	1	1	.	2
Check Fraud	.	.	.	1	3	1	2	.	7
Child Exploitation	.	.	.	10	1	.	.	.	12	34	.	.	57
Child Molesting	.	1,394	368	109	.	310	5	135	293	.	.	.	2,614
Child Possession of Firearm	2	.	.	2
Child Seduction	.	.	.	2	7	.	.	9
Child Solicitation	.	.	1	4	1	.	.	.	16	33	.	.	55
Conspiracy	.	97	74	6	.	8	64	58	34	53	2	.	396
Contributing To The Delinquency Of Minor	1	.	1
Controlled Substance Registration	.	.	.	1	1	3	.	5
Conversion	5	.	.	5
Corrupt Business Influence	.	.	.	11	42	.	.	53
Criminal Confinement	.	.	118	12	2	.	10	111	.	107	7	.	367
Criminal Deviate Conduct	.	135	73	208
Criminal Gang Enhancement	1	1
Criminal Recklessness	.	.	.	9	4	49	12	.	74
Dangerous Control Of A Handgun	1	.	.	1
Deal Sub Represented To Be Controlled Sub	2	.	2
Dealing In Cocaine Or Narcotic Drug	.	639	465	.	.	.	318	203	271	231	.	.	2,127
Dealing In Marijuana, Hash, or Hash Oil	.	.	.	2	19	6	.	27
Dealing In Methamphetamine	.	193	438	.	.	.	541	364	521	360	.	.	2,417
Dealing In Schedule I, II, or III Controlled Substance	.	72	265	.	.	.	20	21	26	26	.	.	430
Dealing In Schedule IV Controlled Substance	.	.	6	7	.	.	.	8	2	4	.	.	27
Dealing Possessing Look-Alike Substance	.	.	.	3	1	27	20	.	51
Dealing Substance Represented To Be Controlled Substance	1	1
Disarming A Law Enforcement Officer	.	.	.	1	.	.	.	2	.	14	.	.	17

Note: 31 offenders have missing sentencing data due to processing or because of safekeeper status.

INDIANA DEPARTMENT OF CORRECTION
ADULT OFFENDERS
by Most Serious Offense, Alphabetical
for October 2019
Snapshot date: 10/01/2019

Most Serious Offense	Murder	FA	FB	FC	FD	F1	F2	F3	F4	F5	F6	HO	Total
Dissemination Of Matter Harmful To Minor	1	.	1
Domestic Battery	1	239	50	.	290
Domestic Battery Resulting in Death Under 14	1	1
Domestic Battery with Serious Bodily Injury Under Age 14	4	4
Driving After Forfeiture	.	.	.	1	1
Driving Whl/Suspended Resulting In Death	1	.	.	1
Escape	4	108	136	.	248
Fail To Return To Accident Resulting in Serious Injury	23	23
Fail To Stop After Accident - Operating Vehicle Intoxicated	.	.	5	5
Failure Of Sex Offender To Possess Id	1	1
Failure To Appear	3	.	3
Failure To Register As A Sex Offender	.	.	.	8	160	9	.	177
Failure To Return Lawful Detention/Escape	.	.	8	9	2	19
Felon Fraud in Offer	1	.	.	.	1
Firearm Within 1 Mile School Property Without License	.	.	.	8	8
Fleeing Scene of Accident	1	.	1
Forgery,Counterfeiting,Application Fraud	.	.	.	91	28	.	119
Fraud	1	16	.	17
Fraud On A Financial Institution	.	.	.	10	82	.	.	92
Gang Activity	1	.	1
Habitual Offender	1	.	1
Habitual Offender Substance Abuse	1	1
Habitual Substance Offender	2	2
Habitual Vehicular Subst Offender	1	1
Handgun Violation	.	.	.	5	348	.	.	353
Home Improvement Fraud Offenses	.	.	.	2	2	.	.	4
Human Sexual Trafficking	.	.	4	.	.	.	1	2	1	.	.	.	8
Identity Deception	1	1	9	.	11
Incest	.	.	21	4	5	5	.	.	35
Inmate Fraud	1	.	.	1
Insurance Fraud	1	.	.	1
Intimidation	.	.	.	11	3	118	25	.	157
Invasion Of Privacy	9	.	9
Involuntary Manslaughter	5	.	.	5
Kidnapping	.	82	9	19	.	10	1	.	121
Maintaining Common Nuisance	2	20	.	22
Make False Sales Doc	1	.	1
Manufacture Methamphetamine	4	16	.	.	.	20
Manufacturing Methamphetamine	1	1
Mischief	1	.	1
Murder	2,589	2,589
Neglect Of A Dependent	.	.	25	5	30	8	.	68
Neglect Of A Dependent Resulting in Serious Injury	75	75

Note: 31 offenders have missing sentencing data due to processing or because of safekeeper status.

INDIANA DEPARTMENT OF CORRECTION
ADULT OFFENDERS
by Most Serious Offense, Alphabetical
for October 2019
Snapshot date: 10/01/2019

Most Serious Offense	Murder	FA	FB	FC	FD	F1	F2	F3	F4	F5	F6	HO	Total
Neglect Of Dependent Resulting In Death	.	57	.	.	.	40	97
Non Support Of Dependent Child	.	.	.	59	11	22	12	.	104
Obliterating Handgun I.D.	14	.	.	14
Obstruction Of Justice	1	9	5	.	15
Official Misconduct	1	.	1
Operate Vehicle After Suspended For Life	.	.	.	20	386	.	.	406
Operating Vehicle Intoxicated	3	.	.	3
Operating Vehicle Intoxicated Resulting in Death	.	.	29	3	63	25	.	.	120
Operating Vehicle Intoxicated Resulting in Serious Bodily Injury	.	.	.	2	1	15	7	.	25
Operating Vehicle Intoxicated w/ Previous Conviction	.	.	.	1	1
Operating Vehicle Intoxicated-Prior Conviction	8	26	.	34
Operating Vehicle While Intoxicated - Endangering Person	2	2
Operating Vehicle With Schedule I in Body - Causing Death	.	.	.	1	1
Operating Vehicle With Schedule I,II in Body - Causing Death	1	.	.	.	1
Operating Vehicle-Habit Traffic Violator	5	28	.	33
Opererating Vehicle While Intoxicated - Prior Conviction	66	.	66
Perjury	1	.	1
Pharmacy Robbery	3	.	.	.	3
Possess Chemical Reagents Or Precursors	.	.	.	8	8
Possess Destructive Device Or Explosive	.	1	7	.	.	2	.	.	10
Possess Of Precursors	2	2	.	4
Possess of Precursors	1	.	.	1
Possession Of A Controlled Substance	.	.	1	5	9	2	.	17
Possession Of A Machine Gun Or Bomb	1	.	.	1
Possession Of Child Pornography	22	1	.	23
Possession Of Cocaine Or Narcotic Drug	.	39	38	12	5	.	.	43	57	130	91	.	415
Possession Of Dangerous Device	8	8	.	.	16
Possession Of Marijuana, Hash, Hash Oil	2	.	2
Possession Of Methamphetamine	.	3	40	11	1	.	.	137	176	356	246	.	970
Possession Of Syringes Or Needles	14	96	.	110
Possession Or Use Of Legend Drug	.	.	.	1	5	12	.	18
Prisoner Poss. Dangerous Device/Material	.	.	9	9
Promoting Prostitution	.	.	.	2	6	.	.	8
Promoting Prostitution Under Age 18	.	.	4	1	.	.	.	5
Rape	.	242	128	.	.	55	.	120	545
Reckless Homicide	.	.	.	7	31	.	.	38
Removing, Damaging, Or Altering a VIN	.	.	.	1	1
Residential Entry	1	28	.	29

Note: 31 offenders have missing sentencing data due to processing or because of safekeeper status.

INDIANA DEPARTMENT OF CORRECTION
ADULT OFFENDERS
by Most Serious Offense, Alphabetical
for October 2019
Snapshot date: 10/01/2019

Most Serious Offense	Murder	FA	FB	FC	FD	F1	F2	F3	F4	F5	F6	HO	Total
Resisting Law Enforcement	.	.	4	1	1	.	1	11	.	10	66	.	94
Robbery	.	222	742	56	.	.	102	835	.	259	.	.	2,216
Sale Of Unregistered Security	.	.	.	2	2
Sex Predator Unlawful Job Near Children	1	.	.	1
Sexual Battery	.	.	.	1	4	.	.	.	10	.	.	.	15
Sexual Misconduct With A Minor	.	3	185	29	1	.	.	.	142	74	.	.	434
Sexual Misconduct w/ Service Provider	1	.	.	1
Stalking	.	.	4	4	6	40	3	.	57
Strangulation	1	3	14	.	18
Synthetic Identity Deception	7	.	7
Terroristic Mischief	1	.	.	1
Theft,Receiving Stolen Property	.	.	.	2	26	35	195	.	258
Trafficking With An Inmate	.	.	.	8	53	.	.	61
Unlawful Firearm Poss By Serious Felon	.	.	214	533	.	.	.	747
Vicarious Sexual Gratification	.	.	2	1	4	1	.	.	8
Viol/Failure Of Carriers Duty To Warn	1	1
Voluntary Manslaughter	.	283	37	.	.	.	94	414
Welfare Fraud	.	.	.	5	3	8
	2,589	4,280	4,630	800	114	576	1,392	2,758	3,308	5,072	1,409	3	26,931

Note: 31 offenders have missing sentencing data due to processing or because of safekeeper status.

INDIANA DEPARTMENT OF CORRECTION
ADULT OFFENDERS
by Most Serious Offense, Ranked
for September 2019
Snapshot date: 09/01/2019

Most Serious Offense	Murder	FA	FB	FC	FD	F1	F2	F3	F4	F5	F6	HO	Total
Burglary	.	252	872	135	.	30	142	48	965	593	.	.	3,037
Child Molesting	.	1,394	368	109	.	310	5	135	293	.	.	.	2,614
Murder	2,589	2,589
Dealing In Methamphetamine	.	193	438	.	.	.	541	364	521	360	.	.	2,417
Robbery	.	222	742	56	.	.	102	835	.	259	.	.	2,216
Dealing In Cocaine Or Narcotic Drug	.	639	465	.	.	.	318	203	271	231	.	.	2,127
Possession Of Methamphetamine	.	3	40	11	1	.	.	137	176	356	246	.	970
Attempt To Commit Felony	.	475	112	7	.	112	41	90	23	74	6	.	940
Battery	.	24	37	62	1	.	8	39	4	636	54	.	865
Unlawful Firearm Poss By Serious Felon	.	.	214	533	.	.	.	747
Rape	.	242	128	.	.	55	.	120	545
Aggravated Battery	.	.	159	.	.	9	.	344	512
Sexual Misconduct With A Minor	.	3	185	29	1	.	.	.	142	74	.	.	434
Dealing In Schedule I, II, or III Controlled Substance	.	72	265	.	.	.	20	21	26	26	.	.	430
Possession Of Cocaine Or Narcotic Drug	.	39	38	12	5	.	.	43	57	130	91	.	415
Voluntary Manslaughter	.	283	37	.	.	.	94	414
Operate Vehicle After Suspended For Life	.	.	.	20	386	.	.	406
Conspiracy	.	97	74	6	.	8	64	58	34	53	2	.	396
Criminal Confinement	.	.	118	12	2	.	10	111	.	107	7	.	367
Handgun Violation	.	.	.	5	348	.	.	353
Aiding Inducing/Causing An Offense	.	49	60	4	.	11	24	58	33	49	4	.	292
Domestic Battery	1	239	50	.	290
Theft,Receiving Stolen Property	.	.	.	2	26	35	195	.	258
Escape	4	108	136	.	248
Criminal Deviate Conduct	.	135	73	208
Failure To Register As A Sex Offender	.	.	.	8	160	9	.	177
Intimidation	.	.	.	11	3	118	25	.	157
Arson	.	14	48	.	.	.	3	2	76	.	1	.	144
Kidnapping	.	82	9	19	.	10	1	.	121
Operating Vehicle Intoxicated Resulting in Death	.	.	29	3	63	25	.	.	120
Forgery,Counterfeiting,Application Fraud	.	.	.	91	28	.	119
Possession Of Syringes Or Needles	14	96	.	110
Non Support Of Dependent Child	.	.	.	59	11	22	12	.	104
Neglect Of Dependent Resulting In Death	.	57	.	.	.	40	97
Resisting Law Enforcement	.	.	4	1	1	.	1	11	.	10	66	.	94
Fraud On A Financial Institution	.	.	.	10	82	.	.	92
Auto Theft, Receiving Stolen Auto Parts	.	.	.	8	3	24	56	.	91
Neglect Of A Dependent Resulting in Serious Injury	75	75
Criminal Recklessness	.	.	.	9	4	49	12	.	74
Neglect Of A Dependent	.	.	25	5	30	8	.	68
Opererating Vehicle While Intoxicated - Prior Conviction	66	.	66

Note: 31 offenders have missing sentencing data due to processing or because of safekeeper status.

INDIANA DEPARTMENT OF CORRECTION
ADULT OFFENDERS
by Most Serious Offense, Ranked
for September 2019
Snapshot date: 09/01/2019

Most Serious Offense	Murder	FA	FB	FC	FD	F1	F2	F3	F4	F5	F6	HO	Total
Trafficking With An Inmate	.	.	.	8	53	.	.	61
Child Exploitation	.	.	.	10	1	.	.	.	12	34	.	.	57
Stalking	.	.	4	4	6	40	3	.	57
Child Solicitation	.	.	1	4	1	.	.	.	16	33	.	.	55
Corrupt Business Influence	.	.	.	11	42	.	.	53
Dealing Possessing Look-Alike Substance	.	.	.	3	1	27	20	.	51
Reckless Homicide	.	.	.	7	31	.	.	38
Incest	.	.	21	4	5	5	.	.	35
Operating Vehicle Intoxicated-Prior Conviction	8	26	.	34
Operating Vehicle-Habit Traffic Violator	5	28	.	33
Carjacking	.	.	31	31
Residential Entry	1	28	.	29
Dealing In Marijuana, Hash, or Hash Oil	.	.	.	2	19	6	.	27
Dealing In Schedule IV Controlled Substance	.	.	6	7	.	.	.	8	2	4	.	.	27
Operating Vehicle Intoxicated Resulting in Serious Bodily Injury	.	.	.	2	1	15	7	.	25
Accident Fail To Stop Resulting in Serious Injury or Death	.	.	1	1	21	.	.	23
Fail To Return To Accident Resulting in Serious Injury	23	23
Possession Of Child Pornography	22	1	.	23
Maintaining Common Nuisance	2	20	.	22
Manufacture Methamphetamine	4	16	.	.	.	20
Assisting A Criminal	.	.	.	4	14	1	.	19
Failure To Return Lawful Detention/Escape	.	.	8	9	2	19
Possession Or Use Of Legend Drug	.	.	.	1	5	12	.	18
Strangulation	1	3	14	.	18
Disarming A Law Enforcement Officer	.	.	.	1	.	.	.	2	.	14	.	.	17
Fraud	1	16	.	17
Possession Of A Controlled Substance	.	.	1	5	9	2	.	17
Possession Of Dangerous Device	8	8	.	.	16
Obstruction Of Justice	1	9	5	.	15
Sexual Battery	.	.	.	1	4	.	.	.	10	.	.	.	15
Obliterating Handgun I.D.	14	.	.	14
Identity Deception	1	1	9	.	11
Possess Destructive Device Or Explosive	.	1	7	.	.	2	.	.	10
Child Seduction	.	.	.	2	7	.	.	9
Invasion Of Privacy	9	.	9
Prisoner Poss. Dangerous Device/Material	.	.	9	9
Firearm Within 1 Mile School Property Without License	.	.	.	8	8

Note: 31 offenders have missing sentencing data due to processing or because of safekeeper status.

INDIANA DEPARTMENT OF CORRECTION
ADULT OFFENDERS
by Most Serious Offense, Ranked
for September 2019
Snapshot date: 09/01/2019

Most Serious Offense	Murder	FA	FB	FC	FD	F1	F2	F3	F4	F5	F6	HO	Total
Human Sexual Trafficking	.	.	4	.	.	.	1	2	1	.	.	.	8
Possess Chemical Reagents Or Precursors	.	.	.	8	8
Promoting Prostitution	.	.	.	2	6	.	.	8
Vicarious Sexual Gratification	.	.	2	1	4	1	.	.	8
Welfare Fraud	.	.	.	5	3	8
Check Fraud	.	.	.	1	3	1	2	.	7
Synthetic Identity Deception	7	.	7
Carrying Handgun Without License	.	.	.	6	6
Bribery	5	.	.	5
Controlled Substance Registration	.	.	.	1	1	3	.	5
Conversion	5	.	.	5
Fail To Stop After Accident - Operating Vehicle Intoxicated	.	.	5	5
Involuntary Manslaughter	5	.	.	5
Promoting Prostitution Under Age 18	.	.	4	1	.	.	.	5
Battery To A Child Causing Death	.	4	4
Domestic Battery with Serious Bodily Injury Under Age 14	4	4
Home Improvement Fraud Offenses	.	.	.	2	2	.	.	4
Possess Of Precursors	2	2	.	4
Battery By Bodily Waste	.	.	1	.	2	3
Failure To Appear	3	.	3
Operating Vehicle Intoxicated	3	.	.	3
Pharmacy Robbery	3	.	.	.	3
Check Deception	1	1	.	2
Child Possession of Firearm	2	.	.	2
Deal Sub Represented To Be Controlled Sub	2	.	2
Habitual Substance Offender	2	2
Operating Vehicle While Intoxicated - Endangering Person	2	2
Possession Of Marijuana, Hash, Hash Oil	2	.	2
Sale Of Unregistered Security	.	.	.	2	2
Assisting Suicide	.	.	.	1	1
Attempted Murder	1	1
Causing Suicide	.	.	1	1
Contributing To The Delinquency Of Minor	1	.	1
Criminal Gang Enhancement	1	1
Dangerous Control Of A Handgun	1	.	.	1
Dealing Substance Represented To Be Controlled Substance	1	1
Dissemination Of Matter Harmful To Minor	1	.	1
Domestic Battery Resulting in Death Under 14	1	1
Driving After Forfeiture	.	.	.	1	1
Driving Whl/Suspended Resulting In Death	1	.	.	1
Failure Of Sex Offender To Possess Id	1	1

Note: 31 offenders have missing sentencing data due to processing or because of safekeeper status.

INDIANA DEPARTMENT OF CORRECTION
ADULT OFFENDERS
by Most Serious Offense, Ranked
for September 2019
Snapshot date: 09/01/2019

Most Serious Offense	Murder	FA	FB	FC	FD	F1	F2	F3	F4	F5	F6	HO	Total
Felon Fraud in Offer	1	.	.	.	1
Fleeing Scene of Accident	1	.	1
Gang Activity	1	.	1
Habitual Offender	1	.	1
Habitual Offender Substance Abuse	1	1
Habitual Vehicular Subst Offender	1	1
Inmate Fraud	1	.	.	1
Insurance Fraud	1	.	.	1
Make False Sales Doc	1	.	1
Manufacturing Methamphetamine	1	1
Mischief	1	.	1
Official Misconduct	1	.	1
Operating Vehicle Intoxicated w/ Previous Conviction	.	.	.	1	1
Operating Vehicle With Schedule I in Body - Causing Death	.	.	.	1	1
Operating Vehicle With Schedule I,II in Body - Causing Death	1	.	.	.	1
Perjury	1	.	1
Possess of Precursors	1	.	.	1
Possession Of A Machine Gun Or Bomb	1	.	.	1
Removing, Damaging, Or Altering a VIN	.	.	.	1	1
Sex Predator Unlawful Job Near Children	1	.	.	1
Sexual Misconduct w/ Service Provider	1	.	.	1
Terroristic Mischief	1	.	.	1
Viol/Failure Of Carriers Duty To Warn	1	1

Felony Levels By Facility
For Most Serious Offense
October 2019
Snapshot Date: October 1st, 2019

INDIANA DEPARTMENT OF CORRECTION
ADULT OFFENDERS
by Most Serious Offense

Branchville Correctional Facility												
Most Serious Offense	Murder	FA	FB	FC	FD	F1	F2	F3	F4	F5	F6	Total
Aggravated Battery	.	.	6	10	.	.	.	16
Aiding Inducing/Causing An Offense	.	1	3	.	.	.	1	1	2	1	.	9
Arson	.	1	3	3	.	.	7
Assisting A Criminal	1	.	1
Attempt To Commit Felony	.	9	4	.	.	.	4	5	1	4	.	27
Auto Theft, Receiving Stolen Auto Parts	1	4	5	10
Battery	.	.	1	4	.	.	1	4	.	48	9	67
Battery By Bodily Waste	1	1
Burglary	.	4	62	8	.	.	5	5	85	55	.	224
Carjacking	.	.	1	1
Check Fraud	1	1
Child Molesting	.	2	2	1	1	.	.	6
Conspiracy	.	5	8	1	.	.	4	9	8	4	1	40
Conversion	1	.	1
Corrupt Business Influence	2	.	2
Criminal Confinement	.	.	5	.	1	.	.	10	.	14	1	31
Criminal Deviate Conduct	.	1	1
Criminal Recklessness	.	.	.	1	5	.	6
Dealing In Cocaine Or Narcotic Drug	.	15	23	.	.	.	18	16	17	20	.	109
Dealing In Marijuana, Hash, or Hash Oil	1	.	1
Dealing In Methamphetamine	.	7	49	.	.	.	45	63	63	22	.	249
Dealing In Schedule I, II, or III Controlled Substance	.	1	18	.	.	.	1	.	2	.	.	22
Dealing In Schedule IV Controlled Substance	2	.	2
Dealing Possessing Look-Alike Substance	2	4	6
Disarming A Law Enforcement Officer	.	.	.	1	1
Domestic Battery	22	6	28
Escape	8	16	24
Failure To Register As A Sex Offender	10	1	11
Forgery,Counterfeiting,Application Fraud	.	.	.	3	2	5
Fraud	1	1
Fraud On A Financial Institution	.	.	.	1	7	.	8
Handgun Violation	.	.	.	1	25	.	26
Intimidation	.	.	.	1	9	2	12
Involuntary Manslaughter	1	.	1
Maintaining Common Nuisance	2	2

INDIANA DEPARTMENT OF CORRECTION
ADULT OFFENDERS
by Most Serious Offense

Branchville Correctional Facility												
Most Serious Offense	Murder	FA	FB	FC	FD	F1	F2	F3	F4	F5	F6	Total
Manufacture Methamphetamine	1	2	.	.	3
Murder	18	18
Neglect Of A Dependent	.	.	1	1	.	2
Neglect Of A Dependent Resulting in Serious Injury	1	.	.	.	1
Neglect Of Dependent Resulting In Death	.	2	2
Non Support Of Dependent Child	.	.	.	6	1	1	8
Obliterating Handgun I.D.	6	.	6
Obstruction Of Justice	1	1	2
Operate Vehicle After Suspended For Life	.	.	.	2	39	.	41
Operating Vehicle Intoxicated	1	.	1
Operating Vehicle Intoxicated Resulting in Death	.	.	2	7	1	.	10
Operating Vehicle Intoxicated Resulting in Serious Bodily Injury	.	.	.	1	1	2
Operating Vehicle Intoxicated-Prior Conviction	1	1	2
Operating Vehicle-Habit Traffic Violator	4	4
Opererating Vehicle While Intoxicated - Prior Conviction	2	2
Possess Chemical Reagents Or Precursors	.	.	.	1	1
Possess Destructive Device Or Explosive	1	1
Possession Of A Controlled Substance	.	.	.	1	1	2
Possession Of Cocaine Or Narcotic Drug	.	1	2	2	5	12	5	27
Possession Of Dangerous Device	1	.	1
Possession Of Methamphetamine	.	.	3	1	.	.	.	20	26	36	18	104
Possession Of Syringes Or Needles	1	13	14
Possession Or Use Of Legend Drug	1	1
Promoting Prostitution	.	.	.	1	1
Rape	.	1	1	2
Reckless Homicide	2	.	2
Residential Entry	6	6
Resisting Law Enforcement	3	8	11
Robbery	.	3	24	4	.	.	1	47	.	18	.	97
Sexual Battery	1	1
Sexual Misconduct With A Minor	.	.	1	1	1	.	.	3
Stalking	.	.	.	2	5	.	7
Strangulation	1	1
Theft,Receiving Stolen Property	2	18	20
Trafficking With An Inmate	3	.	3
Unlawful Firearm Poss By Serious Felon	.	.	13	61	.	.	74
Voluntary Manslaughter	.	7	1	.	.	.	1	9
Total	18	60	233	42	8	0	82	194	284	401	129	1451

INDIANA DEPARTMENT OF CORRECTION
ADULT OFFENDERS
by Most Serious Offense

Correctional Industrial Facility (CIC)												
Most Serious Offense	Murder	FA	FB	FC	FD	F1	F2	F3	F4	F5	F6	Total
Aggravated Battery	.	.	17	.	.	1	.	40	.	.	.	58
Aiding Inducing/Causing An Offense	.	5	8	.	.	.	2	6	2	1	.	24
Arson	.	1	3	2	.	.	6
Assisting Suicide	.	.	.	1	1
Attempt To Commit Felony	.	29	8	.	.	2	2	1	1	5	.	48
Auto Theft, Receiving Stolen Auto Parts	.	.	.	2	4	6
Battery	.	1	1	5	.	.	1	1	.	36	3	48
Burglary	.	25	72	8	.	.	16	2	55	28	.	206
Carjacking	.	.	2	2
Carrying Handgun Without License	.	.	.	2	2
Check Fraud	1	1
Child Molesting	.	20	5	3	.	5	.	3	2	.	.	38
Conspiracy	.	12	5	.	.	1	3	6	2	2	.	31
Corrupt Business Influence	1	.	1
Criminal Confinement	.	.	11	2	.	.	.	7	.	5	1	26
Criminal Deviate Conduct	.	2	1	3
Criminal Recklessness	3	.	3
Dealing In Cocaine Or Narcotic Drug	.	62	41	.	.	.	35	10	10	10	.	168
Dealing In Methamphetamine	.	24	30	.	.	.	56	24	25	15	.	174
Dealing In Schedule I, II, or III Controlled Substance	.	5	18	1	1	.	25
Dealing In Schedule IV Controlled Substance	.	.	2	1	.	1	.	4
Dealing Possessing Look-Alike Substance	3	2	5
Disarming A Law Enforcement Officer	1	.	1	.	2
Domestic Battery	12	4	16
Escape	5	8	13
Fail To Return To Accident Resulting in Serious Injury	3	.	.	.	3
Failure To Register As A Sex Offender	.	.	.	1	9	1	11
Failure To Return Lawful Detention/Escape	.	.	1	1	2
Forgery,Counterfeiting,Application Fraud	.	.	.	8	1	9
Fraud On A Financial Institution	5	.	5
Habitual Offender Substance Abuse	1	1
Handgun Violation	15	.	15
Identity Deception	2	2
Intimidation	5	1	6
Kidnapping	.	7	3	.	.	.	10
Manufacture Methamphetamine	1	.	.	1

INDIANA DEPARTMENT OF CORRECTION
ADULT OFFENDERS
by Most Serious Offense

Correctional Industrial Facility (CIC)												
Most Serious Offense	Murder	FA	FB	FC	FD	F1	F2	F3	F4	F5	F6	Total
Manufacturing Methamphetamine	1	1
Murder	73	73
Neglect Of A Dependent	.	.	2	1	1	4
Neglect Of A Dependent Resulting in Serious Injury	9	.	.	.	9
Neglect Of Dependent Resulting In Death	.	1	.	.	.	1	2
Non Support Of Dependent Child	.	.	.	3	2	5
Obliterating Handgun I.D.	2	.	2
Obstruction Of Justice	1	1
Operate Vehicle After Suspended For Life	.	.	.	1	14	.	15
Operating Vehicle Intoxicated Resulting in Death	.	.	3	1	.	4
Operating Vehicle Intoxicated-Prior Conviction	1	2	3
Operating Vehicle-Habit Traffic Violator	1	1
Possess Destructive Device Or Explosive	.	1	1	2
Possession Of Cocaine Or Narcotic Drug	.	4	5	2	9	3	5	28
Possession Of Methamphetamine	.	.	3	7	5	8	6	29
Possession Of Syringes Or Needles	2	8	10
Prisoner Poss. Dangerous Device/Material	.	.	1	1
Promoting Prostitution	1	.	1
Rape	.	1	3	.	.	1	.	4	.	.	.	9
Reckless Homicide	.	.	.	1	2	.	3
Residential Entry	1	1
Resisting Law Enforcement	6	6
Robbery	.	12	67	4	.	.	8	72	.	15	.	178
Sexual Misconduct With A Minor	.	.	3	1	.	.	4
Stalking	1	1	2
Strangulation	1	1
Theft,Receiving Stolen Property	5	5
Trafficking With An Inmate	2	.	2
Unlawful Firearm Poss By Serious Felon	.	.	21	29	.	.	50
Vicarious Sexual Gratification	.	.	1	1
Voluntary Manslaughter	.	20	2	.	.	.	7	29
Total	73	232	336	42	4	11	132	202	145	215	66	1458

INDIANA DEPARTMENT OF CORRECTION
ADULT OFFENDERS
by Most Serious Offense

Chain O'Lakes Correctional Facility (COL)											
Most Serious Offense	FA	FB	FC	FD	F1	F2	F3	F4	F5	F6	Total
Accident Fail To Stop Resulting in Serious Injury or Death	1	.	1
Aiding Inducing/Causing An Offense	2	.	2
Battery	3	.	3
Burglary	.	4	.	.	.	1	1	4	8	.	18
Corrupt Business Influence	3	.	3
Criminal Confinement	1	.	1
Criminal Recklessness	1	1
Dealing In Cocaine Or Narcotic Drug	3	5	2	6	3	.	19
Dealing In Marijuana, Hash, or Hash Oil	2	.	2
Dealing In Methamphetamine	4	7	1	1	7	.	20
Dealing In Schedule I, II, or III Controlled Substance	2	1	1	.	1	.	5
Domestic Battery	2	.	2
Handgun Violation	4	.	4
Identity Deception	1	1
Intimidation	1	.	1
Manufacture Methamphetamine	1	.	.	1
Non Support Of Dependent Child	.	.	.	1	2	.	3
Operate Vehicle After Suspended For Life	12	.	12
Operating Vehicle Intoxicated Resulting in Death	1	.	1
Operating Vehicle Intoxicated-Prior Conviction	.	.	.	1	1
Operating Vehicle-Habit Traffic Violator	1	1
Possession Of A Controlled Substance	.	.	1	1
Possession Of Cocaine Or Narcotic Drug	2	1	1	4
Possession Of Methamphetamine	1	1	1	2	4	4	13
Resisting Law Enforcement	1	1
Robbery	.	3	2	.	.	.	1	.	2	.	8
Theft,Receiving Stolen Property	.	.	.	1	2	3
Trafficking With An Inmate	1	.	1
Unlawful Firearm Poss By Serious Felon	2	.	.	2
Total	12	22	3	3	0	1	7	16	60	11	135

INDIANA DEPARTMENT OF CORRECTION
ADULT OFFENDERS
by Most Serious Offense

Edinburgh Correctional Facility (JCU)												
Most Serious Offense	FA	FB	FC	FD	F1	F2	F3	F4	F5	F6	HO	Total
Aiding Inducing/Causing An Offense	1	.	.	.	1	.	2
Attempt To Commit Felony	1	.	1	.	.	2
Battery	2	.	.	2
Burglary	.	9	3	.	.	.	1	28	19	.	.	60
Child Possession of Firearm	1	.	.	1
Conspiracy	.	1	.	.	.	1	.	1	1	.	.	4
Criminal Confinement	1	.	.	1
Criminal Recklessness	.	.	.	1	1	.	.	2
Dealing In Cocaine Or Narcotic Drug	11	13	.	.	.	2	.	10	7	.	.	43
Dealing In Marijuana, Hash, or Hash Oil	1	1	.	2
Dealing In Methamphetamine	5	10	.	.	.	2	3	15	20	.	.	55
Dealing In Schedule I, II, or III Controlled Substance	2	6	2	4	.	.	14
Dealing In Schedule IV Controlled Substance	.	.	1	1
Dealing Possessing Look-Alike Substance	1	1	.	2
Domestic Battery	1	.	1
Fail To Return To Accident Resulting in Serious Injury	1	1
Felon Fraud in Offer	1	.	.	.	1
Forgery,Counterfeiting,Application Fraud	1	.	1
Fraud On A Financial Institution	2	.	.	2
Handgun Violation	11	.	.	11
Home Improvement Fraud Offenses	.	.	1	1	.	.	2
Intimidation	.	.	.	1	1
Maintaining Common Nuisance	2	.	2
Neglect Of A Dependent	1	.	.	1
Non Support Of Dependent Child	.	.	2	1	3	2	.	8
Operate Vehicle After Suspended For Life	26	.	.	26
Operating Vehicle Intoxicated Resulting in Death	3	2	.	.	5
Operating Vehicle Intoxicated Resulting in Serious Bodily Injury	1	1	.	2
Operating Vehicle-Habit Traffic Violator	1	.	1
Opererating Vehicle While Intoxicated - Prior Conviction	7	.	7
Pharmacy Robbery	1	.	.	.	1
Possession Of A Controlled Substance	.	.	.	1	1
Possession Of Cocaine Or Narcotic Drug	1	1	.	4	3	.	9
Possession Of Marijuana, Hash, Hash Oil	1	.	1
Possession Of Methamphetamine	2	6	13	17	.	38
Possession Of Syringes Or Needles	1	3	.	4
Resisting Law Enforcement	2	.	2
Robbery	.	3	3	.	1	.	.	7
Theft,Receiving Stolen Property	1	1	.	2
Trafficking With An Inmate	3	.	.	3
Unlawful Firearm Poss By Serious Felon	7	.	.	.	7
Total	19	42	7	4	0	6	12	74	129	45	0	338

INDIANA DEPARTMENT OF CORRECTION
ADULT OFFENDERS
by Most Serious Offense

Heritage Trail Correctional Facility (STP)													
Most Serious Offense	Murder	FA	FB	FC	FD	F1	F2	F3	F4	F5	F6	HO	Total
Accident Fail To Stop Resulting in Serious Injury or Death	2	.	.	2
Aggravated Battery	.	.	2	9	11
Aiding Inducing/Causing An Offense	.	.	1	4	1	.	1	.	7
Arson	.	.	1	3	.	1	.	5
Assisting A Criminal	1	.	.	1
Attempt To Commit Felony	.	1	1	.	.	.	1	1	.	3	2	.	9
Auto Theft, Receiving Stolen Auto Parts	2	5	.	7
Battery	.	.	.	4	.	.	.	1	.	59	3	.	67
Burglary	.	.	18	2	.	.	1	2	46	33	.	.	102
Conspiracy	.	.	3	.	.	.	3	2	3	3	.	.	14
Corrupt Business Influence	.	.	.	1	3	.	.	4
Criminal Confinement	6	.	9	.	.	15
Criminal Gang Enhancement	1	1
Criminal Recklessness	5	1	.	6
Dealing In Cocaine Or Narcotic Drug	.	3	15	.	.	.	10	18	17	14	.	.	77
Dealing In Marijuana, Hash, or Hash Oil	1	.	.	1
Dealing In Methamphetamine	.	.	14	.	.	.	5	16	26	15	.	.	76
Dealing In Schedule I, II, or III Controlled Substance	.	1	9	1	1	.	.	12
Dealing In Schedule IV Controlled Substance	1	1
Dealing Possessing Look-Alike Substance	2	.	.	2
Disarming A Law Enforcement Officer	2	.	.	2
Domestic Battery	1	43	4	.	48
Domestic Battery with Serious Bodily Injury Under Age 14	1	1
Escape	1	3	13	.	17
Fail To Return To Accident Resulting in Serious Injury	2	2
Failure To Return Lawful Detention/Escape	1	1
Forgery,Counterfeiting,Application Fraud	.	.	.	3	4	.	7
Fraud On A Financial Institution	3	.	.	3
Handgun Violation	.	.	.	1	48	.	.	49
Identity Deception	1	.	1
Intimidation	.	.	.	2	8	4	.	14
Invasion Of Privacy	2	.	2
Involuntary Manslaughter	2	.	.	2
Kidnapping	.	1	1
Manufacture Methamphetamine	1	.	.	.	1
Murder	1	1
Neglect Of A Dependent Resulting in Serious Injury	1	1
Non Support Of Dependent Child	.	.	.	9	2	1	.	.	12
Obliterating Handgun I.D.	2	.	.	2

INDIANA DEPARTMENT OF CORRECTION
ADULT OFFENDERS
by Most Serious Offense

Heritage Trail Correctional Facility (STP)													
Most Serious Offense	Murder	FA	FB	FC	FD	F1	F2	F3	F4	F5	F6	HO	Total
Obstruction Of Justice	1	.	.	1
Operate Vehicle After Suspended For Life	.	.	.	1	39	.	.	40
Operating Vehicle Intoxicated Resulting in Death	1	3	.	.	4
Operating Vehicle Intoxicated Resulting in Serious Bodily Injury	2	1	.	3
Operating Vehicle Intoxicated-Prior Conviction	2	.	2
Opererating Vehicle While Intoxicated - Prior Conviction	5	.	5
Possession Of Cocaine Or Narcotic Drug	.	.	1	2	.	.	.	1	2	9	5	.	20
Possession Of Methamphetamine	.	.	.	2	.	.	.	5	8	23	13	.	51
Possession Of Syringes Or Needles	5	.	5
Possession Or Use Of Legend Drug	1	1	.	2
Reckless Homicide	5	.	.	5
Residential Entry	3	.	3
Resisting Law Enforcement	1	6	.	7
Robbery	.	.	8	2	.	.	3	30	.	10	.	.	53
Stalking	5	.	.	5
Strangulation	1	1	3	.	5
Synthetic Identity Deception	1	.	1
Theft,Receiving Stolen Property	1	3	11	.	15
Trafficking With An Inmate	2	.	.	2
Unlawful Firearm Poss By Serious Felon	.	.	2	38	.	.	.	40
Voluntary Manslaughter	.	1	1
Welfare Fraud	1	1
Total	1	7	75	29	8	0	23	101	148	369	97	0	858

INDIANA DEPARTMENT OF CORRECTION
ADULT OFFENDERS
by Most Serious Offense

Indiana State Prison (ISP)												
Most Serious Offense	Murder	FA	FB	FC	FD	F1	F2	F3	F4	F5	F6	Total
Accident Fail To Stop Resulting in Serious Injury or Death	1	1	.	2
Aggravated Battery	.	.	21	22	.	.	.	43
Aiding Inducing/Causing An Offense	.	5	6	1	.	1	3	4	1	.	.	21
Arson	.	.	1	.	.	.	1	.	2	.	.	4
Attempt To Commit Felony	.	80	13	.	.	26	2	5	.	1	.	127
Auto Theft, Receiving Stolen Auto Parts	1	2	3
Battery	.	5	4	6	.	.	1	1	.	22	.	39
Bribery	1	.	1
Burglary	.	49	59	10	.	8	9	1	28	21	.	185
Carjacking	.	.	4	4
Child Molesting	.	203	13	1	.	71	.	2	4	.	.	294
Conspiracy	.	10	4	.	.	1	5	2	2	2	.	26
Corrupt Business Influence	.	.	.	1	2	.	3
Criminal Confinement	.	.	10	.	1	.	3	4	.	5	.	23
Criminal Deviate Conduct	.	19	3	22
Criminal Recklessness	1	2	.	3
Dealing In Cocaine Or Narcotic Drug	.	102	30	.	.	.	24	6	13	5	.	180
Dealing In Methamphetamine	.	22	16	.	.	.	31	6	14	6	.	95
Dealing In Schedule I, II, or III Controlled Substance	.	4	9	.	.	.	1	.	.	1	.	15
Dealing Possessing Look-Alike Substance	1	1	2
Domestic Battery	10	2	12
Escape	5	6	11
Fail To Return To Accident Resulting in Serious Injury	3	.	.	.	3
Failure To Register As A Sex Offender	1	.	1
Failure To Return Lawful Detention/Escape	.	.	2	.	1	3
Forgery,Counterfeiting,Application Fraud	.	.	.	2	2
Fraud On A Financial Institution	3	.	3
Handgun Violation	.	.	.	1	17	.	18
Human Sexual Trafficking	.	.	1	1
Intimidation	4	.	4
Kidnapping	.	16	1	17
Maintaining Common Nuisance	2	2
Murder	723	723
Neglect Of A Dependent	.	.	2	1	.	3
Neglect Of Dependent Resulting In Death	.	8	.	.	.	8	16

INDIANA DEPARTMENT OF CORRECTION
ADULT OFFENDERS
by Most Serious Offense

Indiana State Prison (ISP)												
Most Serious Offense	Murder	FA	FB	FC	FD	F1	F2	F3	F4	F5	F6	Total
Non Support Of Dependent Child	.	.	.	1	1	.	2
Obstruction Of Justice	1	.	1
Operate Vehicle After Suspended For Life	.	.	.	2	14	.	16
Operating Vehicle Intoxicated Resulting in Death	.	.	2	1	1	1	.	5
Operating Vehicle Intoxicated Resulting in Serious Bodily Injury	1	.	1
Operating Vehicle With Schedule I in Body - Causing Death	.	.	.	1	1
Operating Vehicle-Habit Traffic Violator	1	2	3
Opererating Vehicle While Intoxicated - Prior Conviction	1	1
Possess Of Precursors	1	1
Possession Of A Controlled Substance	.	.	1	1
Possession Of Child Pornography	1	.	1
Possession Of Cocaine Or Narcotic Drug	.	6	1	1	3	3	2	16
Possession Of Dangerous Device	1	.	1
Possession Of Methamphetamine	.	.	.	1	.	.	.	2	5	9	5	22
Possession Of Syringes Or Needles	1	1
Prisoner Poss. Dangerous Device/Material	.	.	1	1
Rape	.	54	10	.	.	11	.	2	.	.	.	77
Reckless Homicide	.	.	.	2	1	.	3
Residential Entry	1	1
Resisting Law Enforcement	2	.	1	1	4
Robbery	.	38	70	4	.	.	8	46	.	11	.	177
Sexual Misconduct With A Minor	.	1	10	1	2	.	.	14
Stalking	1	.	1
Strangulation	1	1
Synthetic Identity Deception	1	1
Theft,Receiving Stolen Property	1	4	5
Trafficking With An Inmate	2	.	2
Unlawful Firearm Poss By Serious Felon	.	.	18	26	.	.	44
Voluntary Manslaughter	.	52	4	.	.	.	8	64
Total	723	674	315	35	6	126	97	109	102	160	32	2379

INDIANA DEPARTMENT OF CORRECTION
ADULT OFFENDERS
by Most Serious Offense

Indiana Women's Prison (IWP)												
Most Serious Offense	Murder	FA	FB	FC	FD	F1	F2	F3	F4	F5	F6	Total
Accident Fail To Stop Resulting in Serious Injury or Death	1	.	1
Aggravated Battery	.	.	2	9	.	.	.	11
Aiding Inducing/Causing An Offense	.	5	3	.	.	1	1	4	1	3	.	18
Arson	.	1	2	.	.	.	1	.	3	.	.	7
Attempt To Commit Felony	.	6	1	.	.	2	4	1	1	6	.	21
Auto Theft, Receiving Stolen Auto Parts	1	1
Battery	.	2	.	2	23	3	30
Battery To A Child Causing Death	.	1	1
Burglary	.	1	7	1	.	2	.	.	26	13	.	50
Child Molesting	.	.	1	.	.	1	2
Conspiracy	.	3	6	.	.	1	4	3	1	1	.	19
Controlled Substance Registration	1	1
Conversion	1	.	1
Corrupt Business Influence	2	.	2
Criminal Confinement	.	.	1	3	.	.	.	4
Criminal Recklessness	2	.	2
Dealing In Cocaine Or Narcotic Drug	.	8	11	.	.	.	5	3	7	10	.	44
Dealing In Methamphetamine	.	9	13	.	.	.	28	20	27	9	.	106
Dealing In Schedule I, II, or III Controlled Substance	.	4	9	.	.	.	1	2	3	2	.	21
Dealing In Schedule IV Controlled Substance	.	.	.	1	1
Dealing Possessing Look-Alike Substance	2	.	2
Domestic Battery	4	1	5
Escape	7	16	23
Forgery,Counterfeiting,Application Fraud	.	.	.	6	6
Fraud	2	2
Fraud On A Financial Institution	5	.	5
Handgun Violation	4	.	4
Identity Deception	1	1
Incest	.	.	1	1
Insurance Fraud	1	.	1
Intimidation	1	.	1
Kidnapping	1	.	1	.	2
Maintaining Common Nuisance	1	1	2
Murder	70	70

INDIANA DEPARTMENT OF CORRECTION
ADULT OFFENDERS
by Most Serious Offense

Indiana Women's Prison (IWP)												
Most Serious Offense	Murder	FA	FB	FC	FD	F1	F2	F3	F4	F5	F6	Total
Neglect Of A Dependent	.	.	2	2	1	5
Neglect Of A Dependent Resulting In Serious Injury	10	.	.	.	10
Neglect Of Dependent Resulting In Death	.	11	.	.	.	8	19
Non Support Of Dependent Child	.	.	.	2	1	.	3
Operate Vehicle After Suspended For Life	5	.	5
Operating Vehicle Intoxicated Resulting In Death	.	.	1	4	1	.	6
Operating Vehicle Intoxicated Resulting In Serious Bodily Injury	1	.	1
Operating Vehicle Intoxicated-Prior Conviction	1	2	3
Opererating Vehicle While Intoxicated - Prior Conviction	3	3
Possess Chemical Reagents Or Precursors	.	.	.	1	1
Possession Of A Controlled Substance	1	1	2
Possession Of Cocaine Or Narcotic Drug	.	.	2	.	1	.	.	1	.	3	5	12
Possession Of Methamphetamine	.	.	1	2	10	15	20	48
Possession Of Syringes Or Needles	2	3	5
Possession Or Use Of Legend Drug	.	.	.	1	1	2
Promoting Prostitution Under Age 18	.	.	1	1
Reckless Homicide	2	.	2
Resisting Law Enforcement	2	2
Robbery	.	4	7	1	.	.	7	23	.	9	.	51
Sexual Misconduct With A Minor	1	.	1
Stalking	1	.	1
Theft,Receiving Stolen Property	2	11	13
Trafficking With An Inmate	6	.	6
Unlawful Firearm Poss By Serious Felon	.	.	1	4	.	.	5
Voluntary Manslaughter	.	9	1	.	.	.	5	15
Total	70	64	73	15	6	15	56	82	87	147	75	690

INDIANA DEPARTMENT OF CORRECTION
ADULT OFFENDERS
by Most Serious Offense

Madison Correctional Facility (MCU)													
Most Serious Offense	Murder	FA	FB	FC	FD	F1	F2	F3	F4	F5	F6	HO	Total
Aggravated Battery	.	.	1	1	2
Aiding Inducing/Causing An Offense	.	1	2	4	4	9	.	.	20
Arson	4	.	.	.	4
Attempt To Commit Felony	.	4	.	1	.	.	.	1	3	3	.	.	12
Battery	.	.	1	1	.	15	1	.	18
Burglary	.	1	11	4	.	.	1	.	42	13	.	.	72
Check Fraud	1	1	.	2
Conspiracy	.	1	6	1	.	.	4	4	3	4	.	.	23
Corrupt Business Influence	.	.	.	1	5	.	.	6
Dealing In Cocaine Or Narcotic Drug	.	5	9	.	.	.	7	16	27	27	.	.	91
Dealing In Methamphetamine	.	9	19	.	.	.	30	37	54	37	.	.	186
Dealing In Schedule I, II, or III Controlled Substance	.	5	29	.	.	.	2	5	5	4	.	.	50
Dealing In Schedule IV Controlled Substance	.	.	.	1	1	.	.	2
Dealing Possessing Look-Alike Substance	1	.	.	1
Disarming A Law Enforcement Officer	1	.	.	1
Fail To Return To Accident Resulting in Serious Injury	1	1
Forgery,Counterfeiting,Application Fraud	.	.	.	6	3	.	9
Fraud	1	.	1
Fraud On A Financial Institution	9	.	.	9
Handgun Violation	1	.	.	1
Identity Deception	1	.	.	1
Intimidation	1	.	.	1
Invasion Of Privacy	1	.	1
Maintaining Common Nuisance	2	.	2
Manufacture Methamphetamine	1	1	.	.	.	2
Murder	5	5
Neglect Of A Dependent	.	.	4	6	2	.	12
Neglect Of A Dependent Resulting in Serious Injury	3	3
Non Support Of Dependent Child	1	1	.	.	2
Obstruction Of Justice	1	.	1
Operate Vehicle After Suspended For Life	.	.	.	1	11	.	.	12
Operating Vehicle Intoxicated Resulting in Death	.	.	2	6	1	.	.	9
Operating Vehicle Intoxicated Resulting in Serious Bodily Injury	1	.	.	1
Operating Vehicle Intoxicated w/ Previous Conviction	.	.	.	1	1
Operating Vehicle Intoxicated-Prior Conviction	2	.	2
Operating Vehicle-Habit Traffic Violator	1	.	1
Opererating Vehicle While Intoxicated - Prior Conviction	4	.	4

INDIANA DEPARTMENT OF CORRECTION
ADULT OFFENDERS
by Most Serious Offense

Madison Correctional Facility (MCU)													
Most Serious Offense	Murder	FA	FB	FC	FD	F1	F2	F3	F4	F5	F6	HO	Total
Possess of Precursors	1	.	.	1
Possession Of Cocaine Or Narcotic Drug	.	.	.	2	.	.	.	3	3	16	8	.	32
Possession Of Methamphetamine	.	.	1	13	17	36	18	.	85
Possession Of Syringes Or Needles	13	.	13
Possession Or Use Of Legend Drug	3	2	.	5
Reckless Homicide	1	.	.	1
Robbery	.	1	2	.	.	.	1	8	.	5	.	.	17
Synthetic Identity Deception	1	.	1
Theft,Receiving Stolen Property	1	4	15	.	20
Trafficking With An Inmate	7	.	.	7
Unlawful Firearm Poss By Serious Felon	1	.	.	.	1
Voluntary Manslaughter	.	2	2
Welfare Fraud	.	.	.	2	2
	5	29	87	20	3	0	45	98	170	225	76	0	758

INDIANA DEPARTMENT OF CORRECTION
ADULT OFFENDERS
by Most Serious Offense

Miami Correctional Facility (MCF)												
Most Serious Offense	Murder	FA	FB	FC	FD	F1	F2	F3	F4	F5	F6	Total
Accident Fail To Stop Resulting in Serious Injury or Death	.	.	1	3	.	4
Aggravated Battery	.	.	40	.	.	2	.	91	.	.	.	133
Aiding Inducing/Causing An Offense	.	6	5	.	.	3	7	12	2	2	.	37
Arson	.	3	8	15	.	.	26
Assisting A Criminal	1	.	1
Attempt To Commit Felony	.	52	17	.	.	37	10	21	1	4	.	142
Auto Theft, Receiving Stolen Auto Parts	.	.	.	2	2	10	14
Battery	.	3	7	8	.	.	.	4	3	57	5	87
Battery By Bodily Waste	.	.	1	1
Burglary	.	42	153	16	.	6	51	12	93	38	.	411
Carjacking	.	.	6	6
Causing Suicide	.	.	1	1
Child Exploitation	.	.	.	1	1
Child Molesting	.	80	17	3	.	87	1	7	17	.	.	212
Child Seduction	1	.	1
Conspiracy	.	14	12	.	.	1	16	6	.	4	.	53
Conversion	1	.	1
Corrupt Business Influence	.	.	.	1	3	.	4
Criminal Confinement	.	.	18	2	.	.	4	34	.	6	.	64
Criminal Deviate Conduct	.	4	2	6
Criminal Recklessness	.	.	.	1	5	1	7
Dealing In Cocaine Or Narcotic Drug	.	124	57	.	.	.	101	20	17	11	.	330
Dealing In Marijuana, Hash, or Hash Oil	2	.	2
Dealing In Methamphetamine	.	38	50	.	.	.	155	31	35	14	.	323
Dealing In Schedule I, II, or III Controlled Substance	.	16	37	.	.	.	6	.	.	1	.	60
Dealing In Schedule IV Controlled Substance	.	.	.	1	1
Dealing Possessing Look-Alike Substance	.	.	.	1	1
Domestic Battery	12	2	14
Domestic Battery Resulting in Death Under 14	1	1
Domestic Battery with Serious Bodily Injury Under Age 14	1	.	.	.	1
Escape	1	11	3	15
Fail To Return To Accident Resulting in Serious Injury	2	.	.	.	2
Fail To Stop After Accident - Operating Vehicle Intoxicated	.	.	1	1
Failure To Register As A Sex Offender	.	.	.	1	9	.	10
Failure To Return Lawful Detention/Escape	.	.	2	3	5

INDIANA DEPARTMENT OF CORRECTION
ADULT OFFENDERS
by Most Serious Offense

Miami Correctional Facility (MCF)												
Most Serious Offense	Murder	FA	FB	FC	FD	F1	F2	F3	F4	F5	F6	Total
Forgery,Counterfeiting,Application Fraud	.	.	.	6	1	7
Fraud	1	1
Fraud On A Financial Institution	5	.	5
Handgun Violation	26	.	26
Identity Deception	1	1	2
Incest	.	.	1	1
Intimidation	.	.	.	1	5	.	6
Kidnapping	.	10	5	6	.	1	.	22
Murder	247	247
Neglect Of A Dependent	.	.	3	1	.	4
Neglect Of A Dependent Resulting in Serious Injury	9	.	.	.	9
Neglect Of Dependent Resulting In Death	.	5	.	.	.	9	14
Non Support Of Dependent Child	.	.	.	1	3	1	5
Obliterating Handgun I.D.	1	.	1
Operate Vehicle After Suspended For Life	.	.	.	1	16	.	17
Operating Vehicle Intoxicated Resulting in Death	.	.	5	1	5	1	.	12
Operating Vehicle Intoxicated-Prior Conviction	1	1
Operating Vehicle-Habit Traffic Violator	2	2
Opererating Vehicle While Intoxicated - Prior Conviction	3	3
Pharmacy Robbery	1	.	.	1
Possess Chemical Reagents Or Precursors	.	.	.	1	1
Possess Destructive Device Or Explosive	3	3
Possess Of Precursors	1	1
Possession Of A Controlled Substance	1	1
Possession Of Cocaine Or Narcotic Drug	.	8	6	1	.	.	.	9	4	3	3	34
Possession Of Dangerous Device	2	2	.	4
Possession Of Methamphetamine	.	.	6	10	14	11	7	48
Possession Of Syringes Or Needles	1	2	3
Possession Or Use Of Legend Drug	1	1
Prisoner Poss. Dangerous Device/Material	.	.	1	1
Rape	.	12	2	.	.	18	.	8	.	.	.	40
Reckless Homicide	5	.	5
Resisting Law Enforcement	.	.	2	3	.	1	4	10
Robbery	.	36	141	5	.	.	28	186	.	15	.	411
Sexual Misconduct With A Minor	.	.	5	5	2	.	12

INDIANA DEPARTMENT OF CORRECTION
ADULT OFFENDERS
by Most Serious Offense

Miami Correctional Facility (MCF)												
Most Serious Offense	Murder	FA	FB	FC	FD	F1	F2	F3	F4	F5	F6	Total
Stalking	.	.	1	1	1	.	3
Theft,Receiving Stolen Property	2	1	5	8
Trafficking With An Inmate	4	.	4
Unlawful Firearm Poss By Serious Felon	.	.	39	56	.	.	95
Vicarious Sexual Gratification	1	.	.	1
Voluntary Manslaughter	.	38	4	.	.	.	30	72
Welfare Fraud	1	1
Total	247	491	651	58	6	163	418	472	272	292	53	3123

INDIANA DEPARTMENT OF CORRECTION
ADULT OFFENDERS
by Most Serious Offense

New Castle Correctional Facility (NCF)												
Most Serious Offense	Murder	FA	FB	FC	FD	F1	F2	F3	F4	F5	F6	Total
Accident Fail To Stop Resulting in Serious Injury or Death	2	.	2
Aggravated Battery	.	.	4	.	.	1	.	9	.	.	.	14
Aiding Inducing/Causing An Offense	.	3	4	.	.	.	1	.	1	1	.	10
Arson	.	1	5	6	.	.	12
Assisting A Criminal	1	.	1
Attempt To Commit Felony	.	47	29	2	.	3	1	9	7	5	.	103
Auto Theft, Receiving Stolen Auto Parts	1	2	3
Battery	.	3	4	6	24	1	38
Burglary	.	18	46	6	.	.	9	2	35	18	.	134
Carjacking	.	.	1	1
Check Fraud	.	.	.	1	1
Child Exploitation	.	.	.	8	10	29	.	47
Child Molesting	.	613	275	96	.	22	4	108	251	.	.	1369
Child Seduction	.	.	.	2	6	.	8
Child Solicitation	.	.	1	3	1	.	.	.	16	26	.	47
Conspiracy	.	5	4	1	.	.	.	4	.	4	.	18
Corrupt Business Influence	.	.	.	1	2	.	3
Criminal Confinement	.	.	12	2	.	.	.	5	.	11	.	30
Criminal Deviate Conduct	.	48	53	101
Criminal Recklessness	.	.	.	1	3	.	4
Dangerous Control Of A Handgun	1	.	1
Dealing In Cocaine Or Narcotic Drug	.	25	14	.	.	.	4	2	15	8	.	68
Dealing In Methamphetamine	.	2	19	.	.	.	5	2	8	23	.	59
Dealing In Schedule I, II, or III Controlled Substance	.	5	11	2	.	.	.	18
Dealing Possessing Look-Alike Substance	.	.	.	1	2	.	3
Disarming A Law Enforcement Officer	1	.	1
Dissemination Of Matter Harmful To Minor	1	1
Domestic Battery	1	1	2
Escape	2	3	5
Fail To Return To Accident Resulting in Serious Injury	1	.	.	.	1
Failure To Register As A Sex Offender	.	.	.	1	16	1	18
Forgery,Counterfeiting,Application Fraud	.	.	.	8	1	9
Fraud On A Financial Institution	1	.	1

INDIANA DEPARTMENT OF CORRECTION
ADULT OFFENDERS
by Most Serious Offense

New Castle Correctional Facility (NCF)												
Most Serious Offense	Murder	FA	FB	FC	FD	F1	F2	F3	F4	F5	F6	Total
Handgun Violation	13	.	13
Home Improvement Fraud Offenses	.	.	.	1	1
Human Sexual Trafficking	1	1	.	.	2
Incest	.	.	17	4	3	4	.	28
Intimidation	.	.	.	3	1	4
Kidnapping	.	10	1	1	.	3	.	15
Manufacture Methamphetamine	1	.	.	1
Murder	74	74
Neglect Of A Dependent	.	.	.	1	1	.	2
Neglect Of A Dependent Resulting in Serious Injury	1	.	.	.	1
Non Support Of Dependent Child	.	.	.	2	1	1	4
Operate Vehicle After Suspended For Life	.	.	.	1	12	.	13
Operating Vehicle Intoxicated	0
Operating Vehicle Intoxicated Resulting in Death	.	.	1	1	2	.	4
Operating Vehicle Intoxicated-Prior Conviction	1	1
Opererating Vehicle While Intoxicated - Prior Conviction	3	3
Possession Of A Machine Gun Or Bomb	1	.	1
Possession Of Child Pornography	18	1	19
Possession Of Cocaine Or Narcotic Drug	.	.	3	7	3	13
Possession Of Methamphetamine	.	.	1	1	1	15	5	23
Possession Of Syringes Or Needles	3	3
Promoting Prostitution Under Age 18	.	.	2	2
Rape	.	73	93	.	.	2	.	88	.	.	.	256
Reckless Homicide	.	.	.	1	1
Residential Entry	1	1
Robbery	.	12	47	3	.	.	5	29	.	13	.	109
Sexual Battery	.	.	.	1	2	.	.	.	10	.	.	13
Sexual Misconduct With A Minor	.	1	139	26	1	.	.	.	107	64	.	338
Sexual Misconduct w/ Service Provider	1	.	1
Stalking	1	1
Theft,Receiving Stolen Property	11	11
Unlawful Firearm Poss By Serious Felon	.	.	13	10	.	.	23
Vicarious Sexual Gratification	.	.	1	1	3	1	.	6

INDIANA DEPARTMENT OF CORRECTION
ADULT OFFENDERS
by Most Serious Offense

New Castle Correctional Facility (NCF)												
Most Serious Offense	Murder	FA	FB	FC	FD	F1	F2	F3	F4	F5	F6	Total
Voluntary Manslaughter	.	6	1	.	.	.	1	8
Total	74	872	800	182	6	28	31	266	486	344	39	3128

INDIANA DEPARTMENT OF CORRECTION
ADULT OFFENDERS
by Most Serious Offense

Pendleton Correctional Facility (ISR)												
Most Serious Offense	Murder	FA	FB	FC	FD	F1	F2	F3	F4	F5	F6	Total
Accident Fail To Stop Resulting in Serious Injury or Death	2	.	2
Aggravated Battery	.	.	12	20	.	.	.	32
Aiding Inducing/Causing An Offense	.	3	1	.	.	2	.	1	.	2	.	9
Arson	.	3	4	3	.	.	10
Assisting A Criminal	1	.	1
Attempt To Commit Felony	.	64	8	1	.	22	2	3	.	3	.	103
Auto Theft, Receiving Stolen Auto Parts	1	1	2
Battery	.	1	2	4	.	.	1	2	.	19	2	31
Burglary	.	30	64	8	.	6	9	3	27	15	.	162
Carjacking	.	.	3	3
Check Deception	1	.	1
Child Molesting	.	198	8	.	.	48	.	3	2	.	.	259
Conspiracy	.	7	1	.	.	1	2	1	.	.	.	12
Criminal Confinement	.	.	15	1	.	.	1	6	.	4	.	27
Criminal Deviate Conduct	.	32	32
Criminal Recklessness	.	.	.	1	1	2	4
Dealing In Cocaine Or Narcotic Drug	.	50	14	.	.	.	15	4	7	4	.	94
Dealing In Marijuana, Hash, or Hash Oil	1	.	1
Dealing In Methamphetamine	.	16	14	.	.	.	12	4	10	6	.	62
Dealing In Schedule I, II, or III Controlled Substance	.	3	10	1	.	.	14
Dealing In Schedule IV Controlled Substance	1	.	.	.	1
Dealing Possessing Look-Alike Substance	1	.	1
Disarming A Law Enforcement Officer	1	.	1
Domestic Battery	4	.	4
Escape	3	2	5
Failure To Appear	1	1
Failure To Register As A Sex Offender	5	.	5
Forgery,Counterfeiting,Application Fraud	.	.	.	2	1	3
Fraud	1	1
Fraud On A Financial Institution	.	.	.	1	2	.	3
Handgun Violation	.	.	.	1	11	.	12
Human Sexual Trafficking	1	1
Incest	1	.	.	1

INDIANA DEPARTMENT OF CORRECTION
ADULT OFFENDERS
by Most Serious Offense

Pendleton Correctional Facility (ISR)												
Most Serious Offense	Murder	FA	FB	FC	FD	F1	F2	F3	F4	F5	F6	Total
Intimidation	9	.	9
Kidnapping	.	11	1	1	.	.	.	13
Maintaining Common Nuisance	2	2
Manufacture Methamphetamine	1	1	.	.	2
Mischief	1	1
Murder	533	533
Neglect Of A Dependent	.	.	2	2
Neglect Of A Dependent Resulting in Serious Injury	2	.	.	.	2
Neglect Of Dependent Resulting In Death	.	4	.	.	.	4	8
Obliterating Handgun I.D.	1	.	1
Operate Vehicle After Suspended For Life	12	.	12
Operating Vehicle Intoxicated Resulting in Death	.	.	1	3	.	.	4
Operating Vehicle-Habit Traffic Violator	1	1
Opererating Vehicle While Intoxicated - Prior Conviction	1	1
Perjury	1	1
Possession Of Cocaine Or Narcotic Drug	.	.	2	2	1	4	3	12
Possession Of Dangerous Device	2	1	.	3
Possession Of Methamphetamine	.	.	5	1	.	.	.	3	2	5	7	23
Possession Of Syringes Or Needles	1	1	2
Prisoner Poss. Dangerous Device/Material	.	.	1	1
Rape	.	41	5	.	.	11	.	5	.	.	.	62
Resisting Law Enforcement	.	.	1	.	.	.	1	1	.	.	1	4
Robbery	.	28	62	1	.	.	17	40	.	5	.	153
Sexual Misconduct With A Minor	.	.	8	8
Stalking	2	1	.	3
Strangulation	1	1
Theft,Receiving Stolen Property	.	.	.	1	1	2	4	8
Trafficking With An Inmate	.	.	.	1	3	.	4
Unlawful Firearm Poss By Serious Felon	.	.	17	14	.	.	31
Voluntary Manslaughter	.	33	3	.	.	.	9	45
Total	533	524	263	23	1	94	71	103	76	131	33	1852

INDIANA DEPARTMENT OF CORRECTION
ADULT OFFENDERS
by Most Serious Offense

Plainfield Correctional Facility (IYC)													
Most Serious Offense	Murder	FA	FB	FC	FD	F1	F2	F3	F4	F5	F6	HO	Total
Accident Fail To Stop Resulting in Serious Injury or Death	3	.	.	3
Aggravated Battery	.	.	9	19	28
Aiding Inducing/Causing An Offense	.	3	5	3	.	4	.	.	15
Arson	.	1	2	4	.	.	.	7
Assisting A Criminal	2	1	.	3
Attempt To Commit Felony	.	24	5	8	3	2	1	.	43
Auto Theft, Receiving Stolen Auto Parts	3	4	.	7
Battery	.	1	5	8	.	.	.	4	1	47	2	.	68
Bribery	1	.	.	1
Burglary	.	8	68	10	.	.	7	4	68	48	.	.	213
Carjacking	.	.	3	3
Check Deception	1	.	1
Check Fraud	1	.	.	1
Child Exploitation	.	.	.	1	1	2
Child Molesting	.	6	5	3	.	.	.	14
Child Solicitation	1	.	.	1
Conspiracy	.	10	2	.	.	.	2	3	2	6	1	.	26
Corrupt Business Influence	.	.	.	2	1	.	.	3
Criminal Confinement	.	.	13	1	.	.	.	5	.	12	3	.	34
Criminal Deviate Conduct	.	2	3	5
Criminal Recklessness	.	.	.	1	3	.	.	4
Dealing In Cocaine Or Narcotic Drug	.	37	42	.	.	.	20	16	16	14	.	.	145
Dealing In Marijuana, Hash, or Hash Oil	1	1	.	2
Dealing In Methamphetamine	.	4	35	.	.	.	16	11	27	22	.	.	115
Dealing In Schedule I, II, or III Controlled Substance	.	1	27	.	.	.	1	3	2	1	.	.	35
Dealing In Schedule IV Controlled Substance	.	.	1	1	2
Dealing Possessing Look-Alike Substance	1	2	.	3
Dealing Substance Represented To Be Controlled Substance	1	1
Domestic Battery	24	7	.	31
Domestic Battery with Serious Bodily Injury Under Age 14	1	1
Driving After Forfeiture	.	.	.	1	1
Escape	11	11	.	22

INDIANA DEPARTMENT OF CORRECTION
ADULT OFFENDERS
by Most Serious Offense

Plainfield Correctional Facility (IYC)													
Most Serious Offense	Murder	FA	FB	FC	FD	F1	F2	F3	F4	F5	F6	HO	Total
Fail To Return To Accident Resulting in Serious Injury	1	1
Fail To Stop After Accident - Operating Vehicle Intoxicated	.	.	1	1
Failure To Register As A Sex Offender	.	.	.	2	13	2	.	17
Failure To Return Lawful Detention/Escape	.	.	.	1	1
Forgery,Counterfeiting,Application Fraud	.	.	.	8	1	.	9
Fraud	2	.	2
Fraud On A Financial Institution	.	.	.	5	5	.	.	10
Habitual Vehicular Subst Offender	1	1
Handgun Violation	.	.	.	1	27	.	.	28
Incest	.	.	1	1
Intimidation	.	.	.	2	14	5	.	21
Kidnapping	.	2	2
Maintaining Common Nuisance	1	.	1
Murder	65	65
Neglect Of A Dependent	.	.	1	1
Neglect Of A Dependent Resulting in Serious Injury	3	3
Neglect Of Dependent Resulting In Death	.	1	1
Non Support Of Dependent Child	.	.	.	6	1	1	.	8
Obstruction Of Justice	1	.	.	1
Operate Vehicle After Suspended For Life	.	.	.	2	24	.	.	26
Operating Vehicle Intoxicated Resulting in Death	2	.	.	.	2
Operating Vehicle Intoxicated Resulting in Serious Bodily Injury	3	.	.	3
Operating Vehicle Intoxicated-Prior Conviction	1	1	.	2
Operating Vehicle With Schedule I,II in Body - Causing Death	1	.	.	.	1
Operating Vehicle-Habit Traffic Violator	1	2	.	3
Opererating Vehicle While Intoxicated - Prior Conviction	4	.	4
Possess Destructive Device Or Explosive	1	1
Possession Of A Controlled Substance	.	.	.	1	1
Possession Of Cocaine Or Narcotic Drug	.	3	4	1	2	.	.	5	5	14	5	.	39
Possession Of Dangerous Device	2	.	.	.	2
Possession Of Methamphetamine	.	1	4	2	.	.	.	14	14	18	18	.	71
Possession Of Syringes Or Needles	8	.	8

INDIANA DEPARTMENT OF CORRECTION
ADULT OFFENDERS
by Most Serious Offense

Plainfield Correctional Facility (IYC)													
Most Serious Offense	Murder	FA	FB	FC	FD	F1	F2	F3	F4	F5	F6	HO	Total
Possession Or Use Of Legend Drug	1	.	.	1
Prisoner Poss. Dangerous Device/Material	.	.	1	1
Promoting Prostitution	1	.	.	1
Rape	.	4	2	6
Reckless Homicide	4	.	.	4
Residential Entry	2	.	2
Resisting Law Enforcement	.	.	.	1	.	.	.	2	.	.	7	.	10
Robbery	.	6	50	7	.	.	3	62	.	24	.	.	152
Sexual Misconduct With A Minor	.	1	2	2	1	.	.	6
Stalking	.	.	2	7	1	.	10
Theft,Receiving Stolen Property	4	4	14	.	22
Trafficking With An Inmate	.	.	.	2	1	.	.	3
Unlawful Firearm Poss By Serious Felon	.	.	20	65	.	.	.	85
Viol/Failure Of Carriers Duty To Warn	1	1
Voluntary Manslaughter	.	15	2	.	.	.	2	19
Total	65	130	315	65	11	0	52	165	217	371	108	1	1500

INDIANA DEPARTMENT OF CORRECTION
ADULT OFFENDERS
by Most Serious Offense

Putnamville Correctional Facility (ISF)												
Most Serious Offense	Murder	FA	FB	FC	FD	F1	F2	F3	F4	F5	F6	Total
Aggravated Battery	.	.	8	31	.	.	.	39
Aiding Inducing/Causing An Offense	.	1	4	1	.	.	2	1	1	3	.	13
Arson	.	.	3	1	11	.	.	15
Assisting A Criminal	.	.	.	1	2	.	3
Attempt To Commit Felony	.	18	7	1	.	.	.	8	.	8	1	43
Auto Theft, Receiving Stolen Auto Parts	.	.	.	1	4	9	14
Battery	.	.	2	2	.	.	.	4	.	80	7	95
Battery To A Child Causing Death	.	1	1
Bribery	1	.	1
Burglary	.	16	92	17	.	.	8	5	129	93	.	360
Carjacking	.	.	4	4
Carrying Handgun Without License	.	.	.	1	1
Child Exploitation	1	.	1
Child Molesting	.	2	10	1	.	.	.	1	.	.	.	14
Conspiracy	.	6	9	.	.	.	6	4	4	6	.	35
Controlled Substance Registration	.	.	.	1	2	3
Conversion	1	.	1
Corrupt Business Influence	3	.	3
Criminal Confinement	.	.	11	2	.	.	.	11	.	14	1	39
Criminal Deviate Conduct	.	1	1	2
Criminal Recklessness	.	.	.	2	1	4	3	10
Dealing In Cocaine Or Narcotic Drug	.	27	63	.	.	.	36	26	29	25	.	206
Dealing In Marijuana, Hash, or Hash Oil	.	.	.	2	2	.	4
Dealing In Methamphetamine	.	7	37	.	.	.	26	45	49	39	.	203
Dealing In Schedule I, II, or III Controlled Substance	.	4	31	.	.	.	1	.	3	2	.	41
Dealing In Schedule IV Controlled Substance	.	.	.	1	.	.	.	1	1	.	.	3
Dealing Possessing Look-Alike Substance	2	2	4
Disarming A Law Enforcement Officer	1	.	1	.	2
Domestic Battery	28	7	35
Escape	1	20	25	46
Fail To Return To Accident Resulting in Serious Injury	3	.	.	.	3
Fail To Stop After Accident - Operating Vehicle Intoxicated	.	.	2	2
Failure To Register As A Sex Offender	32	2	34
Firearm Within 1 Mile School Property Without License	.	.	.	2	2
Forgery,Counterfeiting,Application Fraud	.	.	.	10	4	14

INDIANA DEPARTMENT OF CORRECTION
ADULT OFFENDERS
by Most Serious Offense

Putnamville Correctional Facility (ISF)												
Most Serious Offense	Murder	FA	FB	FC	FD	F1	F2	F3	F4	F5	F6	Total
Fraud	1	1
Fraud On A Financial Institution	12	.	12
Handgun Violation	38	.	38
Human Sexual Trafficking	.	.	1	1
Identity Deception	1	1
Intimidation	.	.	.	1	1	23	4	29
Invasion Of Privacy	1	1
Involuntary Manslaughter	1	.	1
Kidnapping	.	3	3	.	3	1	10
Maintaining Common Nuisance	5	5
Manufacture Methamphetamine	1	.	.	1
Murder	55	55
Neglect Of A Dependent	.	.	1	1	4	1	7
Neglect Of A Dependent Resulting in Serious Injury	4	.	.	.	4
Neglect Of Dependent Resulting In Death	.	2	2
Non Support Of Dependent Child	.	.	.	8	1	1	2	12
Obliterating Handgun I.D.	1	.	1
Obstruction Of Justice	2	1	3
Operate Vehicle After Suspended For Life	.	.	.	3	48	.	51
Operating Vehicle Intoxicated	1	.	1
Operating Vehicle Intoxicated Resulting in Death	.	.	4	8	5	.	17
Operating Vehicle Intoxicated Resulting in Serious Bodily Injury	.	.	.	1	3	.	4
Operating Vehicle Intoxicated-Prior Conviction	4	4
Operating Vehicle While Intoxicated - Endangering Person	1	1
Operating Vehicle-Habit Traffic Violator	1	1
Opererating Vehicle While Intoxicated - Prior Conviction	10	10
Possess Chemical Reagents Or Precursors	.	.	.	3	3
Possess Destructive Device Or Explosive	1	.	1
Possess Of Precursors	1	1
Possession Of A Controlled Substance	.	.	.	1	1	2
Possession Of Cocaine Or Narcotic Drug	.	.	3	1	1	.	.	2	9	18	6	40
Possession Of Marijuana, Hash, Hash Oil	1	1
Possession Of Methamphetamine	.	1	7	15	14	38	26	101
Possession Of Syringes Or Needles	5	5
Possession Or Use Of Legend Drug	3	3

INDIANA DEPARTMENT OF CORRECTION
ADULT OFFENDERS
by Most Serious Offense

Putnamville Correctional Facility (ISF)												
Most Serious Offense	Murder	FA	FB	FC	FD	F1	F2	F3	F4	F5	F6	Total
Promoting Prostitution	.	.	.	1	2	.	3
Rape	.	2	1	3
Reckless Homicide	.	.	.	1	3	.	4
Residential Entry	5	5
Resisting Law Enforcement	1	.	2	8	11
Robbery	.	11	75	5	.	.	3	74	.	23	.	191
Sale Of Unregistered Security	.	.	.	1	1
Sex Predator Unlawful Job Near Children	1	.	1
Sexual Battery	1	1
Sexual Misconduct With A Minor	4	.	.	4
Stalking	2	7	.	9
Strangulation	1	3	4
Synthetic Identity Deception	1	1
Terroristic Mischief	1	.	1
Theft,Receiving Stolen Property	2	7	18	27
Trafficking With An Inmate	.	.	.	3	6	.	9
Unlawful Firearm Poss By Serious Felon	.	.	30	97	.	.	127
Voluntary Manslaughter	.	16	7	.	.	.	4	27
Total	55	118	413	75	9	0	86	241	363	623	172	2155

INDIANA DEPARTMENT OF CORRECTION
ADULT OFFENDERS
by Most Serious Offense

Reception Diagnostic Center (RDC)												
Most Serious Offense	Murder	FA	FB	FC	FD	F1	F2	F3	F4	F5	F6	Total
Accident Fail To Stop Resulting in Serious Injury or Death	1	.	1
Aggravated Battery	.	.	1	14	.	.	.	15
Aiding Inducing/Causing An Offense	1	2	2	.	5
Arson	.	.	1	1	.	.	2
Attempt To Commit Felony	2	2	.	.	1	.	5
Attempted Murder	1	1
Auto Theft, Receiving Stolen Auto Parts	.	.	.	1	1	1	3
Battery	33	2	35
Burglary	.	1	14	4	.	.	2	.	22	29	.	72
Child Exploitation	1	3	.	4
Child Molesting	.	4	4	.	.	9	.	4	8	.	.	29
Conspiracy	.	.	.	1	.	.	2	.	.	1	.	4
Conversion	1	.	1
Criminal Confinement	.	.	3	4	.	6	.	13
Criminal Recklessness	1	3	3	7
Deal Sub Represented To Be Controlled Sub	1	1
Dealing In Cocaine Or Narcotic Drug	.	.	5	.	.	.	3	5	7	9	.	29
Dealing In Marijuana, Hash, or Hash Oil	1	1
Dealing In Methamphetamine	.	1	2	.	.	.	18	11	18	18	.	68
Dealing In Schedule I, II, or III Controlled Substance	.	.	3	.	.	.	1	1	.	2	.	7
Dealing Possessing Look-Alike Substance	2	2
Domestic Battery	14	2	16
Escape	3	4	7
Failure To Appear	1	1
Failure To Register As A Sex Offender	8	.	8
Fleeing Scene of Accident	1	1
Forgery, Counterfeiting, Application Fraud	.	.	.	1	1	2
Fraud On A Financial Institution	1	.	1
Gang Activity	1	1
Handgun Violation	28	.	28
Intimidation	4	2	6
Invasion Of Privacy	2	2
Kidnapping	1	.	.	.	1
Murder	9	9
Neglect Of A Dependent	2	.	2
Neglect Of A Dependent Resulting in Serious Injury	2	.	.	.	2
Non Support Of Dependent Child	.	.	.	2	4	2	.	8
Official Misconduct	1	1

INDIANA DEPARTMENT OF CORRECTION
ADULT OFFENDERS
by Most Serious Offense

Reception Diagnostic Center (RDC)												
Most Serious Offense	Murder	FA	FB	FC	FD	F1	F2	F3	F4	F5	F6	Total
Operate Vehicle After Suspended For Life	16	.	16
Operating Vehicle Intoxicated Resulting in Death	.	.	.	1	2	1	.	4
Operating Vehicle Intoxicated Resulting in Serious Bodily Injury	1	2	3
Operating Vehicle Intoxicated-Prior Conviction	1	2	3
Operating Vehicle-Habit Traffic Violator	3	3
Opererating Vehicle While Intoxicated - Prior Conviction	3	3
Possess Destructive Device Or Explosive	1	.	1
Possess Of Precursors	1	1
Possession Of Child Pornography	2	.	2
Possession Of Cocaine Or Narcotic Drug	3	1	5	3	12
Possession Of Dangerous Device	1	.	1
Possession Of Methamphetamine	7	6	18	13	44
Possession Of Syringes Or Needles	2	5	7
Possession Or Use Of Legend Drug	1	1
Rape	.	1	2	4	.	.	.	7
Residential Entry	4	4
Resisting Law Enforcement	3	3
Robbery	.	.	9	2	.	.	1	27	.	12	.	51
Sexual Misconduct With A Minor	.	.	1	2	2	.	5
Stalking	3	.	3
Strangulation	1	1	2
Theft,Receiving Stolen Property	4	2	12	18
Unlawful Firearm Poss By Serious Felon	.	.	4	22	.	.	26
Voluntary Manslaughter	4	4
Total	9	7	49	12	12	12	33	84	92	238	77	625

INDIANA DEPARTMENT OF CORRECTION
ADULT OFFENDERS
by Most Serious Offense

Rockville Correctional Facility (RTC)												
Most Serious Offense	Murder	FA	FB	FC	FD	F1	F2	F3	F4	F5	F6	Total
Aggravated Battery	.	.	3	.	.	1	.	12	.	.	.	16
Aiding Inducing/Causing An Offense	.	4	6	1	.	2	6	3	5	4	.	31
Arson	.	1	1	1	4	.	.	7
Assisting A Criminal	4	.	4
Attempt To Commit Felony	.	10	1	.	.	3	7	3	1	8	.	33
Auto Theft, Receiving Stolen Auto Parts	4	4
Battery	.	1	.	.	1	.	2	5	.	35	2	46
Bribery	1	.	1
Burglary	.	3	15	2	.	1	4	3	41	22	.	91
Carjacking	.	.	2	2
Child Exploitation	1	.	1
Child Molesting	.	25	5	1	.	7	.	5	2	.	.	45
Child Solicitation	4	.	4
Conspiracy	.	7	5	.	.	1	8	6	2	9	.	38
Controlled Substance Registration	1	.	1
Corrupt Business Influence	.	.	.	1	3	.	4
Criminal Confinement	1	4	.	.	.	5
Criminal Deviate Conduct	.	3	1	4
Criminal Recklessness	1	.	1
Dealing In Cocaine Or Narcotic Drug	.	12	14	.	.	.	12	11	14	15	.	78
Dealing In Marijuana, Hash, or Hash Oil	1	1
Dealing In Methamphetamine	.	12	19	.	.	.	58	32	41	24	.	186
Dealing In Schedule I, II, or III Controlled Substance	.	6	19	.	.	.	1	4	2	3	.	35
Dealing In Schedule IV Controlled Substance	.	.	2	1	3
Dealing Possessing Look-Alike Substance	1	3	.	4
Domestic Battery	5	1	6
Escape	10	14	24
Fail To Return To Accident Resulting in Serious Injury	1	.	.	.	1
Failure To Appear	1	1
Failure To Register As A Sex Offender	4	1	5
Failure To Return Lawful Detention/Escape	.	.	.	1	1
Firearm Within 1 Mile School Property Without License	.	.	.	1	1
Forgery,Counterfeiting,Application Fraud	.	.	.	8	6	14
Fraud	3	3

INDIANA DEPARTMENT OF CORRECTION
ADULT OFFENDERS
by Most Serious Offense

Rockville Correctional Facility (RTC)												
Most Serious Offense	Murder	FA	FB	FC	FD	F1	F2	F3	F4	F5	F6	Total
Fraud On A Financial Institution	7	.	7
Habitual Offender	1	1
Handgun Violation	7	.	7
Human Sexual Trafficking	.	.	2	1	.	.	.	3
Identity Deception	2	2
Incest	.	.	1	1	1	.	3
Inmate Fraud	1	.	1
Intimidation	3	.	3
Kidnapping	1	.	1	.	2
Maintaining Common Nuisance	1	2	3
Make False Sales Doc	1	1
Manufacture Methamphetamine	1	.	.	1
Murder	52	52
Neglect Of A Dependent	.	.	4	2	5	.	11
Neglect Of A Dependent Resulting in Serious Injury	21	.	.	.	21
Neglect Of Dependent Resulting In Death	.	10	.	.	.	10	20
Non Support Of Dependent Child	1	.	1
Operate Vehicle After Suspended For Life	5	.	5
Operating Vehicle Intoxicated Resulting in Death	.	.	1	2	.	.	3
Operating Vehicle Intoxicated-Prior Conviction	1	2	3
Operating Vehicle-Habit Traffic Violator	1	1
Opererating Vehicle While Intoxicated - Prior Conviction	5	5
Pharmacy Robbery	1	.	.	1
Possession Of A Controlled Substance	.	.	.	1	1
Possession Of Child Pornography	1	.	1
Possession Of Cocaine Or Narcotic Drug	.	.	1	2	1	7	11	22
Possession Of Methamphetamine	.	.	2	2	1	.	.	18	19	28	33	103
Possession Of Syringes Or Needles	4	14	18
Promoting Prostitution Under Age 18	.	.	1	1	.	.	
Rape	2	.	.	.	2
Reckless Homicide	2	.	2
Residential Entry	3	3
Resisting Law Enforcement	1	.	.	.	1
Robbery	.	3	7	2	.	.	8	32	.	11	.	63
Sexual Misconduct With A Minor	.	.	4	13	3	.	20

INDIANA DEPARTMENT OF CORRECTION
ADULT OFFENDERS
by Most Serious Offense

Rockville Correctional Facility (RTC)												
Most Serious Offense	Murder	FA	FB	FC	FD	F1	F2	F3	F4	F5	F6	Total
Strangulation	1	1
Synthetic Identity Deception	1	1
Theft,Receiving Stolen Property	1	4	21	26
Trafficking With An Inmate	11	.	11
Unlawful Firearm Poss By Serious Felon	.	.	2	5	.	.	7
Voluntary Manslaughter	.	8	1	.	.	.	12	21
Welfare Fraud	.	.	.	2	2
Total	52	105	118	25	7	25	120	168	156	259	130	1165

INDIANA DEPARTMENT OF CORRECTION
ADULT OFFENDERS
by Most Serious Offense

South Bend Community Re-Entry Center (SBW)												
Most Serious Offense	Murder	FA	FB	FC	FD	F1	F2	F3	F4	F5	F6	Total
Aggravated Battery	.	.	2	4	.	.	.	6
Aiding Inducing/Causing An Offense	.	.	3	2	1	.	6
Attempt To Commit Felony	.	5	2	1	.	.	.	8
Auto Theft, Receiving Stolen Auto Parts	2	2
Battery	.	.	1	1	.	2	.	4
Battery To A Child Causing Death	.	1	1
Burglary	.	2	4	2	10	2	.	20
Conspiracy	.	4	1	1	.	6
Corrupt Business Influence	1	.	1
Criminal Recklessness	1	.	1
Dealing In Cocaine Or Narcotic Drug	.	11	7	2	3	5	.	28
Dealing In Marijuana, Hash, or Hash Oil	1	.	1
Dealing In Methamphetamine	.	1	4	4	5	.	14
Dealing In Schedule I, II, or III Controlled Substance	.	1	1	2
Dealing Possessing Look-Alike Substance	1	.	1
Domestic Battery	1	.	1
Fail To Return To Accident Resulting in Serious Injury	1	.	.	.	1
Handgun Violation	4	.	4
Intimidation	1	.	1
Maintaining Common Nuisance	1	1
Murder	13	13
Non Support Of Dependent Child	.	.	.	2	2
Operate Vehicle After Suspended For Life	7	.	7
Operating Vehicle Intoxicated Resulting in Serious Bodily Injury	1	1
Opererating Vehicle While Intoxicated - Prior Conviction	2	2
Possession Of A Controlled Substance	1	1
Possession Of Cocaine Or Narcotic Drug	.	3	2	.	1	6
Possession Of Methamphetamine	1	2	3
Resisting Law Enforcement	1	1
Robbery	.	1	7	1	.	.	.	3	.	3	.	15
Sale Of Unregistered Security	.	.	.	1	1
Synthetic Identity Deception	2	2
Theft,Receiving Stolen Property	4	4
Unlawful Firearm Poss By Serious Felon	.	.	3	2	.	.	5
Voluntary Manslaughter	.	5	1	6
Welfare Fraud	.	.	.	1	1
Total	13	34	36	7	1	0	0	12	23	37	16	179

INDIANA DEPARTMENT OF CORRECTION
ADULT OFFENDERS
by Most Serious Offense

Wabash Valley Correctional Facility (WVF)													
Most Serious Offense	Murder	FA	FB	FC	FD	F1	F2	F3	F4	F5	F6	HO*	Total
Accident Fail To Stop Resulting in Serious Injury or Death	1	.	.	1
Aggravated Battery	.	.	15	.	.	4	.	17	36
Aiding Inducing/Causing An Offense	.	9	1	.	.	2	.	2	2	1	.	.	17
Arson	.	.	8	3	.	.	.	11
Attempt To Commit Felony	.	82	6	.	.	14	2	6	2	5	.	.	117
Auto Theft, Receiving Stolen Auto Parts	1	2	.	3
Battery	.	5	2	5	.	.	2	.	.	25	2	.	41
Battery By Bodily Waste	1	1
Burglary	.	40	59	9	.	7	11	3	51	20	.	.	200
Carjacking	.	.	3	3
Child Exploitation	1	.	.	.	1
Child Molesting	.	236	16	.	.	60	.	1	1	.	.	.	314
Child Solicitation	.	.	.	1	1	.	.	2
Conspiracy	.	7	4	1	.	2	4	3	2	.	.	.	23
Contributing To The Delinquency Of Minor	1	.	1
Criminal Confinement	.	.	10	.	.	.	1	2	.	1	.	.	14
Criminal Deviate Conduct	.	20	7	27
Criminal Recklessness	2	.	.	2
Dealing In Cocaine Or Narcotic Drug	.	48	24	.	.	.	9	5	9	7	.	.	102
Dealing In Marijuana, Hash, or Hash Oil	2	1	.	3
Dealing In Methamphetamine	.	13	22	.	.	.	22	11	17	19	.	.	104
Dealing In Schedule I, II, or III Controlled Substance	.	5	7	.	.	.	2	.	1	1	.	.	16
Dealing Possessing Look-Alike Substance	1	.	.	1
Domestic Battery	3	.	.	3
Driving Whl/Suspended Resulting In Death	1	.	.	1
Escape	1	1	.	.	2
Failure To Register As A Sex Offender	3	.	.	3
Failure To Return Lawful Detention/Escape	.	.	1	1	2
Firearm Within 1 Mile School Property Without License	.	.	.	1	1
Forgery,Counterfeiting,Application Fraud	.	.	.	2	2
Fraud On A Financial Institution	3	.	.	3
Handgun Violation	14	.	.	14
Intimidation	4	1	.	5
Kidnapping	.	19	1	20
Manufacture Methamphetamine	1	.	.	.	1
Murder	567	567

INDIANA DEPARTMENT OF CORRECTION
ADULT OFFENDERS
by Most Serious Offense

Wabash Valley Correctional Facility (WVF)													
Most Serious Offense	Murder	FA	FB	FC	FD	F1	F2	F3	F4	F5	F6	HO*	Total
Neglect Of A Dependent	.	.	.	1	1
Neglect Of A Dependent Resulting in Serious Injury	4	4
Neglect Of Dependent Resulting In Death	.	9	9
Non Support Of Dependent Child	.	.	.	1	1
Obstruction Of Justice	1	.	.	1
Operate Vehicle After Suspended For Life	6	.	.	6
Operating Vehicle Intoxicated	1	.	.	1
Operating Vehicle Intoxicated Resulting in Death	.	.	4	4	2	.	.	10
Operating Vehicle Intoxicated Resulting in Serious Bodily Injury	1	.	1
Operating Vehicle While Intoxicated - Endangering Person	1	1
Opererating Vehicle While Intoxicated - Prior Conviction	2	.	2
Possess Destructive Device Or Explosive	1	1
Possession Of Cocaine Or Narcotic Drug	.	3	1	1	1	4	4	.	14
Possession Of Dangerous Device	1	2	.	.	3
Possession Of Methamphetamine	.	.	2	1	4	9	6	.	22
Prisoner Poss. Dangerous Device/Material	.	.	1	1
Rape	.	48	9	.	.	12	.	7	76
Reckless Homicide	.	.	.	1	1	.	.	2
Removing, Damaging, Or Altering a VIN	.	.	.	1	1
Resisting Law Enforcement	.	.	1	2	.	3
Robbery	.	43	64	1	.	.	6	43	.	13	.	.	170
Sexual Misconduct With A Minor	.	.	9	2	.	.	.	11
Theft,Receiving Stolen Property	1	1	7	.	9
Unlawful Firearm Poss By Serious Felon	.	.	15	19	.	.	.	34
Voluntary Manslaughter	.	37	2	.	.	.	10	49
Welfare Fraud	1	1
Total	567	624	293	25	4	101	71	106	122	156	29	0	2098

INDIANA DEPARTMENT OF CORRECTION
ADULT OFFENDERS
by Most Serious Offense

Westville Correctional Facility (WCC)													
Most Serious Offense	Murder	FA	FB	FC	FD	F1	F2	F3	F4	F5	F6	HO*	Total
Accident Fail To Stop Resulting in Serious Injury or Death	4	.	.	4
Aggravated Battery	.	.	15	36	51
Aiding Inducing/Causing An Offense	.	3	8	1	.	.	.	12	6	13	2	.	45
Arson	.	2	7	12	.	.	.	21
Assisting A Criminal	.	.	.	3	1	.	.	4
Attempt To Commit Felony	.	43	10	2	.	1	4	16	3	15	2	.	96
Auto Theft, Receiving Stolen Auto Parts	.	.	.	2	1	5	3	.	11
Battery	.	2	7	8	.	.	.	11	.	106	12	.	146
Battery To A Child Causing Death	.	1	1
Bribery	1	.	.	1
Burglary	.	12	114	24	.	.	8	4	169	117	.	.	448
Carjacking	.	.	2	2
Carrying Handgun Without License	.	.	.	3	3
Check Fraud	1	.	1
Child Molesting	.	5	7	3	.	.	.	1	2	.	.	.	18
Child Possession of Firearm	1	.	.	1
Child Solicitation	1	.	.	1
Conspiracy	.	6	3	1	.	.	.	5	4	5	.	.	24
Corrupt Business Influence	.	.	.	3	11	.	.	14
Criminal Confinement	.	.	8	2	.	.	.	10	.	18	1	.	39
Criminal Deviate Conduct	.	3	2	5
Criminal Recklessness	.	.	.	2	8	1	.	11
Deal Sub Represented To Be Controlled Sub	1	.	1
Dealing In Cocaine Or Narcotic Drug	.	94	78	.	.	.	17	41	45	36	.	.	311
Dealing In Marijuana, Hash, or Hash Oil	5	1	.	6
Dealing In Methamphetamine	.	19	76	.	.	.	32	45	83	58	.	.	313
Dealing In Schedule I, II, or III Controlled Substance	.	7	17	.	.	.	3	3	3	1	.	.	34
Dealing In Schedule IV Controlled Substance	.	.	1	1	.	.	.	3	1	.	.	.	6
Dealing Possessing Look-Alike Substance	.	.	.	1	4	6	.	11
Disarming A Law Enforcement Officer	7	.	.	7
Domestic Battery	54	12	.	66
Domestic Battery with Serious Bodily Injury Under Age 14	1	1
Escape	19	15	.	34
Fail To Return To Accident Resulting in Serious Injury	4	4
Fail To Stop After Accident - Operating Vehicle Intoxicated	.	.	1	1

INDIANA DEPARTMENT OF CORRECTION
ADULT OFFENDERS
by Most Serious Offense

Westville Correctional Facility (WCC)													
Most Serious Offense	Murder	FA	FB	FC	FD	F1	F2	F3	F4	F5	F6	HO*	Total
Failure Of Sex Offender To Possess Id	1	1
Failure To Register As A Sex Offender	.	.	.	3	50	1	.	54
Failure To Return Lawful Detention/Escape	.	.	2	2	4
Firearm Within 1 Mile School Property Without License	.	.	.	4	4
Forgery,Counterfeiting,Application Fraud	.	.	.	18	2	.	20
Fraud	4	.	4
Fraud On A Financial Institution	.	.	.	3	11	.	.	14
Habitual Substance Offender	2	0
Handgun Violation	54	.	.	54
Home Improvement Fraud Offenses	1	.	.	1
Intimidation	.	.	.	1	26	6	.	33
Invasion Of Privacy	3	.	3
Involuntary Manslaughter	1	.	.	1
Kidnapping	.	3	2	.	1	.	.	6
Manufacture Methamphetamine	1	5	.	.	.	6
Murder	84	84
Neglect Of A Dependent	.	.	3	5	2	.	10
Neglect Of A Dependent Resulting in Serious Injury	5	5
Neglect Of Dependent Resulting In Death	.	4	4
Non Support Of Dependent Child	.	.	.	14	1	3	2	.	20
Obliterating Handgun I.D.	1	.	.	1
Obstruction Of Justice	1	2	1	.	4
Operate Vehicle After Suspended For Life	.	.	.	6	77	.	.	83
Operating Vehicle Intoxicated Resulting in Death	.	.	3	14	3	.	.	20
Operating Vehicle Intoxicated Resulting in Serious Bodily Injury	2	1	.	3
Operating Vehicle Intoxicated-Prior Conviction	1	6	.	7
Operating Vehicle-Habit Traffic Violator	1	10	.	11
Opererating Vehicle While Intoxicated - Prior Conviction	10	.	10
Possess Chemical Reagents Or Precursors	.	.	.	1	1
Possession Of A Controlled Substance	3	1	.	4
Possession Of Cocaine Or Narcotic Drug	.	8	6	5	1	.	.	8	11	18	18	.	75
Possession Of Dangerous Device	1	.	.	.	1
Possession Of Methamphetamine	.	.	4	2	.	.	.	16	22	68	28	.	140
Possession Of Syringes Or Needles	12	.	12
Possession Or Use Of Legend Drug	2	.	2

INDIANA DEPARTMENT OF CORRECTION
ADULT OFFENDERS
by Most Serious Offense

Westville Correctional Facility (WCC)													
Most Serious Offense	Murder	FA	FB	FC	FD	F1	F2	F3	F4	F5	F6	HO*	Total
Prisoner Poss. Dangerous Device/Material	.	.	3	3
Promoting Prostitution	2	.	.	2
Rape	.	5	5
Reckless Homicide	.	.	.	1	3	.	.	4
Residential Entry	3	.	3
Resisting Law Enforcement	1	.	3	14	.	18
Robbery	.	24	95	12	.	.	3	109	.	69	.	.	312
Sexual Misconduct With A Minor	.	.	3	1	3	1	.	.	8
Stalking	.	.	1	1	2	8	.	.	12
Strangulation	2	.	2
Theft,Receiving Stolen Property	.	.	.	1	5	2	31	.	39
Trafficking With An Inmate	.	.	.	2	2	.	.	4
Unlawful Firearm Poss By Serious Felon	.	.	16	75	.	.	.	91
Voluntary Manslaughter	.	34	7	.	.	.	1	42
Total	84	275	499	133	15	1	68	334	461	903	216	2	2991