

Indiana Department of Correction
October 2016

Offender Population Report

Prepared for the Justice Reinvestment Advisory Council
and State Budget Committee

Bruce Lemmon, Commissioner



TABLE OF CONTENTS

DOC Monthly Admissions - Adult Offenders	1
Current Adult Offenders, by County of Commit	4
Population Trend Graphs	6
DOC Adult Offenders – Facility Breakdowns, by highest Felony Classification	8
DOC Adult Offenders – Most Serious Offense, Alphabetical by highest Felony Classification	10
DOC Adult Offenders – Most Serious Offense, Ranked by highest Felony Classification	14
Appendix – DOC Facilities – Felony Breakdowns	18



INDIANA DEPARTMENT OF CORRECTION

for October 2016

September 2016 Admissions

by Most Serious Offense

Most Serious Offense	Murder	FA	FB	FC	FD	F1	F2	F3	F4	F5	F6	Total
Accident Fail To Stop Resulting in Serious Injury or Death	.	.	.	1	1
Aggravated Battery	.	.	7	10	.	.	.	17
Aiding Inducing/Causing An Offense	.	.	5	1	1	3	.	10
Aiding in Manufacture of Sch II Controlled Substance	1	1
Arson	.	1	1	6	.	.	8
Assisting A Criminal	1	.	1
Attempt To Commit Felony	.	.	1	1	.	2	1	4	1	2	.	12
Auto Theft, Receiving Stolen Auto Parts	.	.	.	4	5	3	12
Battery	.	.	.	16	3	32	3	54
Battery On Law Enforcement	1	1
Burglary	.	.	50	29	.	1	2	2	35	27	.	146
Carjacking	.	.	2	2
Carrying Handgun Without License	.	.	.	1	1
Check Deception	1	1
Check Fraud	1	1
Child Exploitation	1	.	1
Child Molesting	.	8	6	16	.	3	.	9	10	.	.	52
Child Solicitation	.	.	.	1	1	2	.	4
Conspiracy	.	.	3	1	.	.	.	1	.	1	.	6
Controlled Substance Registration	.	.	.	2	2
Corrupt Business Influence	.	.	.	1	4	.	5
Criminal Confinement	.	.	4	3	1	3	.	11
Criminal Deviate Conduct	.	.	4	4
Criminal Recklessness	.	.	.	1	1	3	1	6
Deal Sub Represented To Be Controlled Sub	2	2
Dealing In Cocaine Or Narcotic Drug	.	5	25	.	.	.	8	7	7	16	.	68
Dealing In Marijuana, Hash, or Hash Oil	.	.	.	2	3	.	5
Dealing In Methamphetamine	.	3	25	.	.	.	6	5	8	16	.	63
Dealing In Schedule IV Controlled Substance	.	.	1	1	2
Dealing In Schedule IV Controlled Substance	1	.	.	.	1
Dealing In a Schedule I, II, or III Controlled Substance	.	2	15	.	.	.	1	.	3	3	.	24
Dealing Possessing Look-Alike Substance	.	.	.	1	1	.	2
Disarming A Law Enforcement Officer	1	.	1	.	2
Domestic Battery	8	2	10

Note: 8 current admissions have missing sentencing data due to processing or safekeepers. 1

INDIANA DEPARTMENT OF CORRECTION

for October 2016

September 2016 Admissions

by Most Serious Offense

Most Serious Offense	Murder	FA	FB	FC	FD	F1	F2	F3	F4	F5	F6	Total
Escape	4	2	6
Failure To Register As A Sex Offender	.	.	.	2	7	.	9
Failure To Return Lawful Detention/Escape	.	.	.	4	3	7
Firearm Within 1 Mile School Property Without License	.	.	.	3	3
Forgery,Counterfeiting,Application Fraud	.	.	.	20	3	23
Fraud	2	2
Fraud On A Financial Institution	.	.	.	2	6	.	8
Handgun Violation (Felony Within 15 Yrs)	13	.	13
Human Sexual Trafficking	1	.	.	.	1
Identity Deception	1	1
Illegal Possession Of Firearm By Felon	.	.	.	1	1
Incest	.	.	.	2	1	.	.	3
Insurance Fraud	.	.	.	1	1
Intimidation	.	.	.	1	3	4	1	9
Invasion Of Privacy	1	1
Kidnapping	.	1	1
Maintaining Common Nuisance	4	4
Murder	4	4
Neglect Of A Dependent	.	.	1	.	1	1	.	3
Neglect Of A Dependent Resulting in Serious Injury	3	.	.	.	3
Neglect Of Dependent Resulting In Death	1	1
Non Support Of Dependent Child	.	.	.	9	3	1	13
Operate Vehicle After Suspended For Life	.	.	.	5	9	.	14
Operating Vehicle Intoxicated Resulting in Death	.	.	.	1	2	.	.	3
Operating Vehicle Intoxicated Resulting in Serious Bodily Injury	.	.	.	2	2
Operating Vehicle While Intoxicated - Endangering Person	4	4
Operating Vehicle While Intoxicated - Prior Conviction	2	2
Operating Vehicle While Intoxicated-Previous Conviction	7	1	8
Operating Vehicle-Habit Traffic Violator	.	.	.	1	8	9
Possess Chemical Reagents Or Precursors	.	.	.	1	1
Possess Of Precursors	1	1
Possession Of A Controlled Substance	3	3
Possession Of Cocaine Or Narcotic Drug	.	1	4	7	4	.	.	1	.	5	4	26
Possession Of Marijuana, Hash, Hash Oil	3	3

Note: 8 current admissions have missing sentencing data due to processing or safekeepers. 2

INDIANA DEPARTMENT OF CORRECTION

for October 2016

September 2016 Admissions

by Most Serious Offense

Most Serious Offense	Murder	FA	FB	FC	FD	F1	F2	F3	F4	F5	F6	Total
Possession Of Methamphetamine	.	.	.	2	4	.	.	4	2	13	7	32
Possession Of Paraphernalia	1	1
Possession Of Syringes Or Needles	5	1	6
Possession Or Use Of Legend Drug	1	1	2
Promoting Prostitution	.	.	.	2	2
Rape	.	1	5	2	.	.	.	8
Reckless Homicide	.	.	.	1	1
Residential Entry	1	1
Resisting Law Enforcement	.	.	.	1	1	.	.	1	.	1	.	4
Robbery	.	2	29	14	.	.	5	22	.	14	.	86
Sexual Battery	1	.	.	.	1	.	.	2
Sexual Misconduct With A Minor	.	.	11	5	1	.	.	.	2	.	.	19
Stalking	3	.	3
Strangulation	1	1	2
Theft,Receiving Stolen Property	33	1	20	54
Trafficking With An Inmate	1	.	1
Unlawful Firearm Poss By Serious Felon	.	.	4	11	.	.	15
Voluntary Manslaughter	1	1
Voyeurism	1	1
Welfare Fraud	.	.	.	1	1	2
Total	4	24	203	170	119	7	24	74	90	201	58	974

INDIANA DEPARTMENT OF CORRECTION
ADULT OFFENDERS
by County of Commitment
for October 2016
snapshot date: 10/03/2016

County of Commit	Department of Correction	**Community Corrections Programs	Local Jail Holds		COUNTY TOTALS
			DOC Contract	Statutorily Mandated	
Adams	152	126	1	0	279
Allen	1,483	775	22	82	2,362
Bartholomew	269	307	4	29	609
Benton*	19	0	1	1	21
Blackford	62	104	3	8	177
Boone	137	65	2	6	210
Brown	39	23	0	0	62
Carroll*	49	0	1	2	52
Cass	174	122	4	0	300
Clark	235	90	2	4	331
Clay	51	107	9	4	171
Clinton	137	59	2	18	216
Crawford	30	45	0	2	77
Daviess	90	228	4	1	323
Dearborn	400	158	12	34	604
Decatur	131	324	1	6	462
DeKalb	127	129	1	16	273
Delaware	402	600	5	2	1,009
Dubois	86	236	1	0	323
Elkhart	1,552	380	10	38	1,980
Fayette	181	115	2	8	306
Floyd	217	106	8	51	382
Fountain	36	46	0	2	84
Franklin*	83	0	4	9	96
Fulton	96	20	2	3	121
Gibson	106	41	4	32	183
Grant	403	157	5	27	592
Greene	118	78	0	0	196
Hamilton	326	252	5	81	664
Hancock	144	242	0	45	431
Harrison	118	76	1	5	200
Hendricks	220	99	4	81	404
Henry	244	81	2	19	346
Howard	311	446	3	36	796
Huntington	325	59	2	48	434
Jackson	207	94	3	22	326
Jasper	71	98	1	2	172
Jay	208	34	5	0	247
Jefferson	215	292	6	8	521
Jennings	143	24	2	16	185
Johnson	322	281	8	51	662
Knox	50	199	4	0	253
Kosciusko	211	19	1	0	231
LaGrange	57	84	1	9	151
Lake	1,157	265	12	0	1,434
LaPorte	384	195	11	7	597
Lawrence	171	262	2	13	448
Madison	1,102	333	4	16	1,455
Marion	5,382	2,678	28	147	8,235
Marshall	133	74	4	14	225

*Counties that are not participating in Community Corrections

** Community Corrections data as of 10/04/16

INDIANA DEPARTMENT OF CORRECTION
ADULT OFFENDERS
by County of Commitment
for October 2016
snapshot date: 10/03/2016

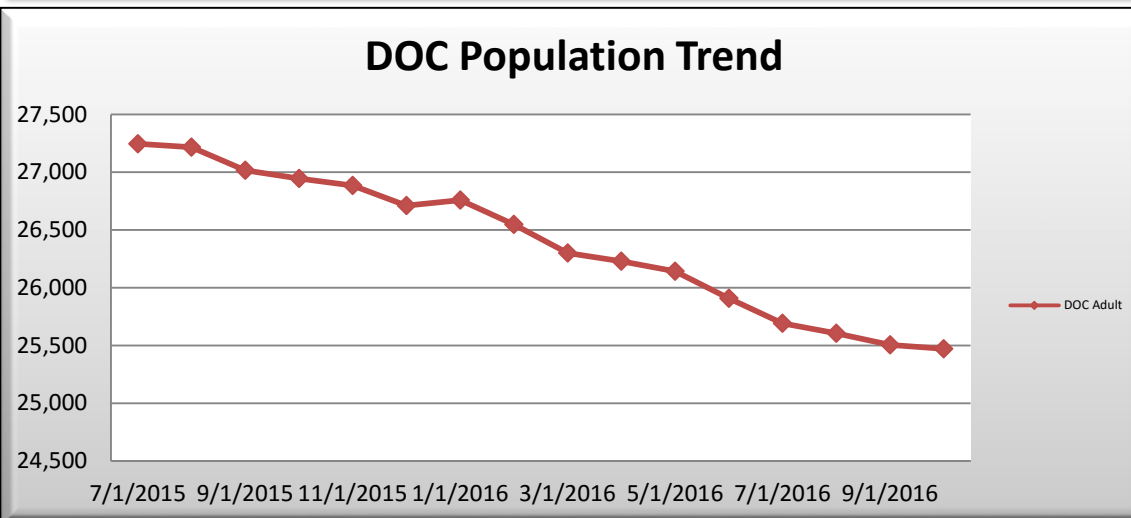
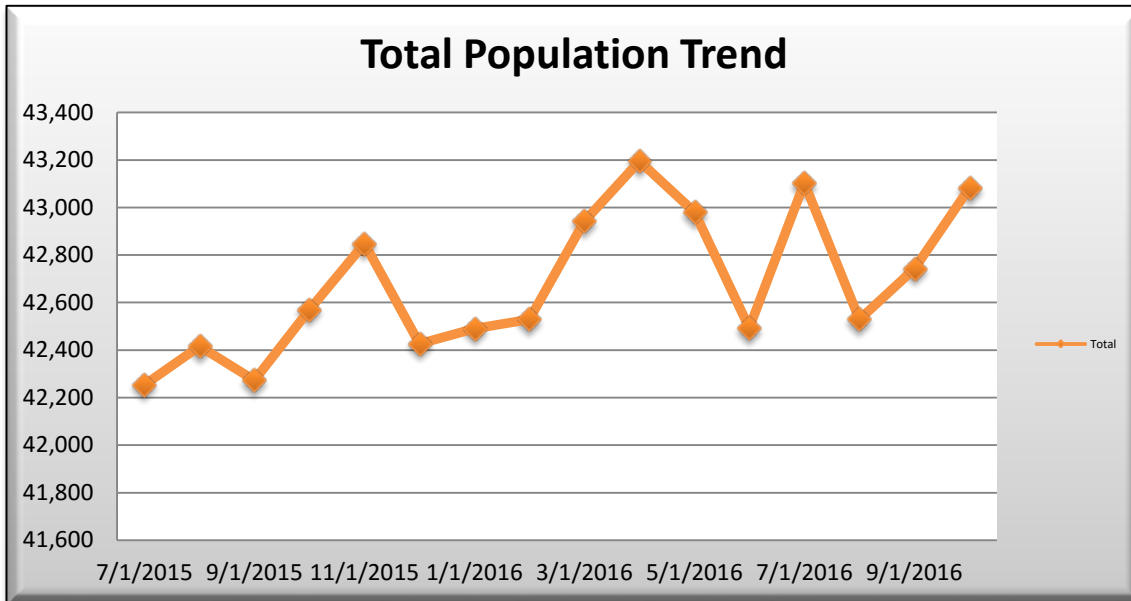
County of Commit	Department of Correction	**Community Corrections Programs	Local Jail Holds		COUNTY TOTALS
			DOC Contract	Statutorily Mandated	
Martin	46	82	2	2	132
Miami	72	39	13	0	124
Monroe	323	480	1	11	815
Montgomery	177	58	1	16	252
Morgan	188	130	3	49	370
Newton*	53	0	0	6	59
Noble	133	527	3	5	668
Ohio	43	13	2	0	58
Orange	51	131	0	0	182
Owen	44	186	1	7	238
Parke	40	14	0	2	56
Perry	53	52	0	6	111
Pike	67	80	0	0	147
Porter	262	142	7	16	427
Posey	98	34	1	11	144
Pulaski	34	7	1	0	42
Putnam	90	68	3	12	173
Randolph	54	70	1	0	125
Ripley	104	70	4	20	198
Rush	78	44	9	0	131
St Joseph	1,051	215	37	61	1,364
Scott	168	111	2	23	304
Shelby	317	156	3	32	508
Spencer	31	105	0	2	138
Starke	102	48	1	8	159
Steuben	114	129	2	0	245
Sullivan	43	22	0	8	73
Switzerland	19	12	1	6	38
Tippecanoe	744	318	2	35	1,099
Tipton	11	8	0	0	19
Union	26	15	0	3	44
Vanderburgh	846	477	14	76	1,413
Vermillion	64	37	2	7	110
Vigo	397	427	4	0	828
Wabash	174	47	5	30	256
Warren	16	18	1	18	53
Warrick	59	20	0	13	92
Washington	114	156	1	0	271
Wayne	478	65	13	37	593
Wells	137	44	1	12	194
White	74	77	2	24	177
Whitley	93	310	3	11	417
Missing	17	0	0	0	17
TOTALS	25,471	15,672	365	1,574	43,082
			1,939		

*Counties that are not participating in Community Corrections

** Community Corrections data as of 10/04/16

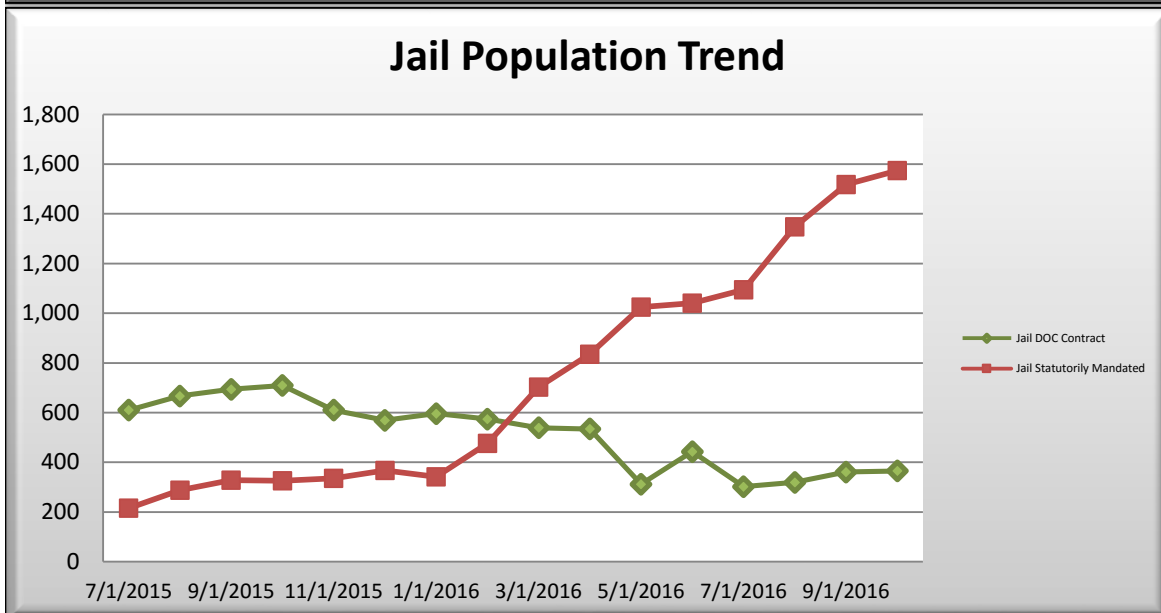
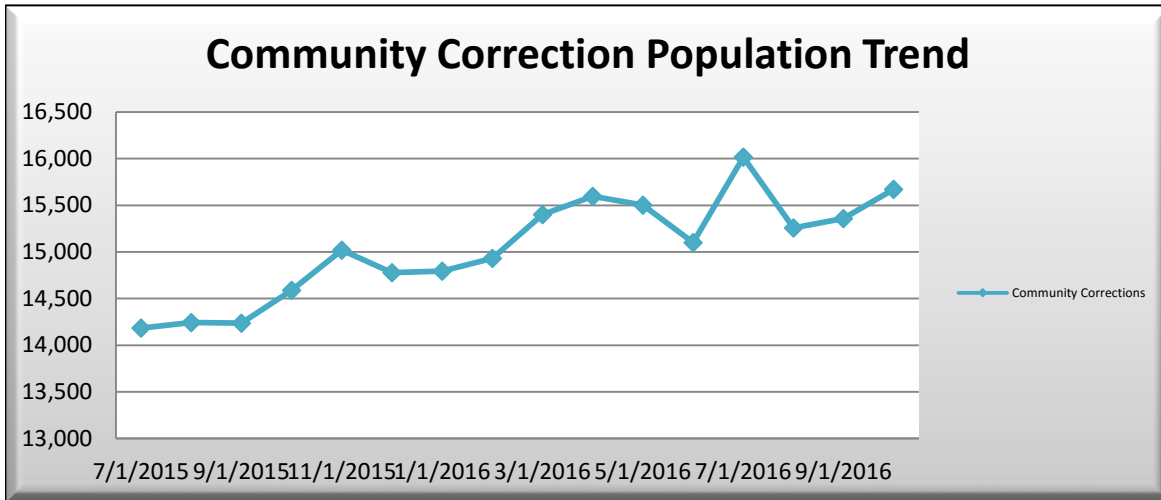
INDIANA DEPARTMENT OF CORRECTION
ADULT OFFENDERS
Population Trend Summary
for October 2016
snapshot date: 10/03/2016

Date	DOC Adult	Community Corrections	Jail DOC Contract	Jail Statutorily Mandated	Total
7/1/2015	27,246	14,183	610	215	42,254
8/1/2015	27,217	14,244	667	288	42,416
9/1/2015	27,015	14,236	694	328	42,273
10/1/2015	26,946	14,589	709	326	42,570
11/1/2015	26,885	15,019	610	335	42,849
12/1/2015	26,711	14,779	569	367	42,426
1/1/2016	26,759	14,793	596	342	42,490
2/1/2016	26,548	14,931	574	476	42,529
3/1/2016	26,301	15,402	539	703	42,942
4/1/2016	26,230	15,596	534	835	43,195
5/1/2016	26,142	15,501	312	1,025	42,980
6/1/2016	25,908	15,101	443	1,041	42,493
7/1/2016	25,691	16,016	302	1,094	43,103
8/1/2016	25,605	15,257	319	1,348	42,529
9/1/2016	25,506	15,357	361	1,518	42,742
10/3/2016	↓ 25,471	↑ 15,672	↑ 365	↑ 1,574	↑ 43,082



INDIANA DEPARTMENT OF CORRECTION
ADULT OFFENDERS
Population Trend Summary
for October 2016
snapshot date: 10/03/2016

Date	DOC Adult	Community Corrections	Jail DOC Contract	Jail Statutorily Mandated	Total
7/1/2015	27,246	14,183	610	215	42,254
8/1/2015	27,217	14,244	667	288	42,416
9/1/2015	27,015	14,236	694	328	42,273
10/1/2015	26,946	14,589	709	326	42,570
11/1/2015	26,885	15,019	610	335	42,849
12/1/2015	26,711	14,779	569	367	42,426
1/1/2016	26,759	14,793	596	342	42,490
2/1/2016	26,548	14,931	574	476	42,529
3/1/2016	26,301	15,402	539	703	42,942
4/1/2016	26,230	15,596	534	835	43,195
5/1/2016	26,142	15,501	312	1,025	42,980
6/1/2016	25,908	15,101	443	1,041	42,493
7/1/2016	25,691	16,016	302	1,094	43,103
8/1/2016	25,605	15,257	319	1,348	42,529
9/1/2016	25,506	15,357	361	1,518	42,742
10/3/2016	↓ 25,471	↑ 15,672	↑ 365	↑ 1,574	↑ 43,082



INDIANA DEPARTMENT OF CORRECTION
by highest felony classification
for October 2016
snapshot date: 10/03/2016

Minimum Security - Adult MALE															
Facility Name	Beds	Offenders	% Capacity	Murder	FA	FB	FC	FD	F1	F2	F3	F4	F5	F6	HO
Chain O'Lakes	129	115	89.1%	.	10	51	12	6	.	1	3	5	23	3	1
Edinburgh	344	327	95.1%	.	23	129	43	27	.	1	2	24	69	9	.
Miami - MCA	204	183	89.7%	8	33	54	22	10	.	.	1	10	37	8	.
New Castle - NCA	204	196	96.1%	.	5	65	19	24	.	.	1	13	62	7	.
Pendleton - IRO	220	182	82.7%	19	27	67	26	9	.	.	.	5	23	6	.
Westville - WCA	379	361	95.3%	.	15	103	38	17	.	1	7	33	114	33	.
Wabash Valley - WVA	198	153	77.3%	.	9	59	18	10	.	1	1	13	36	5	1
Indianapolis Re-Entry	420	272	64.8%	12	61	152	29	.	.	.	2	4	12	.	.
Sub-Total	2,098	1,789	85.3%	39	183	680	207	103	0	4	17	107	376	71	2

Re-Entry & Work Release - Adult MALE															
Facility Name	Beds	Offenders	% Capacity	Murder	FA	FB	FC	FD	F1	F2	F3	F4	F5	F6	HO
Bartholomew Co. Re-Entry	8	8	100.0%	.	1	5	2
Chain O'Lakes Re-Entry	7	3	42.9%	.	1	1	1	.	.
Clark Co. Re-Entry	0	0	100.0%
Duvall Center Re-Entry	20	20	100.0%	2	2	6	7	1	1	1	.
Elkhart Co. Re-Entry	1	1	100.0%	.	.	1
Lake Co. Re-Entry	7	7	100.0%	.	2	4	1
South Bend Re-Entry	172	142	82.6%	2	18	71	23	10	.	.	1	3	9	5	.
VOA/Hope Hall Re-Entry	29	29	100.0%	1	2	15	.	4	.	.	.	1	6	.	.
Starke Co. PI - TC	39	39	100.0%	.	.	6	1	2	.	.	.	12	15	3	.
Sub-Total	283	249	88.0%	5	26	109	34	17	0	0	1	16	32	9	0

Medium Security - Adult MALE															
Facility Name	Beds	Offenders	% Capacity	Murder	FA	FB	FC	FD	F1	F2	F3	F4	F5	F6	HO
Branchville	1,485	1,261	84.9%	9	48	494	156	57	.	20	74	137	207	59	.
Correctional Industrial	1,449	1,419	97.9%	99	423	611	95	23	4	44	55	23	30	12	.
Indiana State Prison ISO	385	256	66.5%	22	62	91	31	7	.	1	4	6	26	6	.
Plainfield	1,696	1,484	87.5%	38	119	559	221	72	.	11	63	113	221	67	.
Putnamville	2,510	2,019	80.4%	29	127	802	278	81	.	37	140	146	295	83	.
Heritage Trail	868	774	89.2%	1	4	232	123	82	.	4	38	54	194	41	1
Westville	2,941	2,341	79.6%	33	160	835	330	131	.	19	124	171	419	118	1
New Castle	2,431	2,406	99.0%	16	696	1003	332	34	2	1	67	116	120	19	.
Sub-Total	13,765	11,960	86.9%	247	1,639	4,627	1,566	487	6	137	565	766	1,512	405	2

Maximum Security - Adult MALE															
Miami	2,984	2,908	97.5%	172	840	1216	196	33	56	85	129	59	95	24	.

INDIANA DEPARTMENT OF CORRECTION
by highest felony classification
for October 2016
snapshot date: 10/03/2016

Indiana State Prison	2,067	1,931	93.4%	706	765	354	36	6	27	9	15	4	6	2	.
Pendleton	1,353	1,314	97.1%	444	542	230	35	5	14	10	10	8	8	6	0
Pendleton Treatment Unit	298	169	56.7%	38	42	53	11	4	3	1	6	2	6	2	.
ISR Secure Housing Unit	69	39	56.5%	11	10	15	2	1	.	.
New Castle Annex	486	439	90.3%	59	124	188	44	3	.	.	4	5	8	4	.
New Castle Mental Health	128	112	87.5%	14	31	34	15	2	.	.	2	3	6	2	.
WCU Secure Housing Unit	110	107	97.3%	16	19	47	11	3	.	.	5	1	4	1	.
Wabash Valley	1,784	1,676	93.9%	549	677	300	48	7	33	7	17	10	20	5	0
WVS Secure Housing Unit	216	139	64.4%	33	24	61	10	1	.	.	1	2	5	2	.
Sub-Total	9,495	8,834	93.0%	2,042	3,074	2,498	408	64	133	112	189	94	159	48	0

Intake Facility - Adult MALE															
Reception Diag. Center	695	417	60.0%	1	8	72	62	39	2	12	35	47	111	25	.
Sub-Total	695	417	60.0%	1	8	72	62	39	2	12	35	47	111	25	0

Minimum Security & Re-Entry - Adult FEMALE															
Facility Name	Beds	Offenders	% Capacity	Murder	FA	FB	FC	FD	F1	F2	F3	F4	F5	F6	HO
Madison	662	518	78.2%	3	25	192	65	39	.	7	17	53	90	27	.
Brandon Hall Re-Entry	26	26	100.0%	.	1	5	10	6	.	.	.	1	2	1	.
Crane House	19	19	100.0%	.	1	4	3	6	.	.	.	1	2	2	.
Jefferson Co. Re-Entry	58	32	55.2%	1	2	17	3	3	.	.	.	1	4	1	.
Theodora House	8	8	100.0%	.	1	5	.	1	1	.	.
VOA/Evansville/Female	2	2	100.0%	.	.	1	1
Sub-Total	775	605	78.1%	4	30	224	82	55	0	7	17	56	99	31	0

Medium Security - Adult FEMALE															
Facility Name	Beds	Offenders	% Capacity	Murder	FA	FB	FC	FD	F1	F2	F3	F4	F5	F6	HO
Rockville	981	922	94.0%	50	154	292	91	54	3	17	53	50	111	46	0
Sub-Total	981	922	94.0%	50	154	292	91	54	3	17	53	50	111	46	0

Maximum Security - Adult FEMALE															
Women's Prison	631	605	95.9%	72	87	160	78	46	3	10	24	26	68	31	.
Rockville Intake	288	90	31.3%	.	.	12	10	20	1	4	5	7	21	10	.
Sub-Total	919	695	75.6%	72	87	172	88	66	4	14	29	33	89	41	0

TOTAL	29,011	25,471	87.8%	2,460	5,201	8,674	2,538	885	148	303	906	1,169	2,489	676	4
--------------	---------------	---------------	--------------	--------------	--------------	--------------	--------------	------------	------------	------------	------------	--------------	--------------	------------	----------

INDIANA DEPARTMENT OF CORRECTION
ADULT OFFENDERS
by Most Serious Offense, Alphabetical
for October 2016
snapshot date: 10/03/2016

Most Serious Offense	Murder	FA	FB	FC	FD	F1	F2	F3	F4	F5	F6	HO	Total
Accident Fail To Stop Resulting in Serious Injury or Death	.	.	5	2	1	11	.	.	19
Aggravated Battery	.	.	291	.	.	1	.	104	396
Aiding Inducing/Causing An Offense	.	52	97	14	1	2	5	16	16	32	.	.	235
Aiding in Manufacture of Sch II Controlled Substance	1	.	1
Animal Fighting Contest	1	1
Arson	.	20	73	2	26	.	.	.	121
Assisting A Criminal	.	.	.	9	1	3	2	.	15
Assisting Suicide	.	.	.	1	1
Attempt To Commit Felony	.	571	177	26	5	36	8	22	9	43	3	.	900
Auto Theft, Receiving Stolen Auto Parts	.	.	.	34	22	1	52	.	109
Battery	.	25	64	249	23	.	2	20	1	377	35	.	796
Battery By Bodily Waste	.	.	.	3	7	10
Battery On Law Enforcement	1	1
Battery To A Child Causing Death	.	7	7
Bribery	2	.	.	2
Burglary	.	288	1,686	427	.	11	44	10	466	304	.	.	3,236
Carjacking	.	.	64	64
Carrying Handgun Without License	.	.	.	34	34
Causing Suicide	.	.	1	1
Check Fraud	.	.	.	9	4	1	.	14
Child Exploitation	.	.	.	12	2	8	.	.	22
Child Molesting	.	1,456	515	218	.	64	.	45	73	.	.	.	2,371
Child Seduction	.	.	.	3	1	3	.	.	7
Child Solicitation	.	.	.	11	4	.	.	.	5	19	.	.	39
Conspiracy	.	128	138	20	1	2	15	19	14	30	.	.	367
Controlled Substance Registration	.	.	.	5	5	1	1	.	12
Conversion	2	1	.	3
Corrupt Business Influence	.	.	.	33	28	.	.	61
Criminal Confinement	.	.	191	38	8	.	2	43	.	42	3	.	327
Criminal Deviate Conduct	.	144	110	254
Criminal Gang Activity	1	1
Criminal Recklessness	.	.	.	25	15	29	5	.	74
Criminal Trespass	1	1	.	2
Dangerous Control Of A Handgun	2	.	.	2
Deal Sub Represented To Be Controlled Sub	3	.	3
Deal Substance Represented To Be Controlled Substance	2	2
Dealing In A Schedule V Controlled Substance	.	.	2	2

INDIANA DEPARTMENT OF CORRECTION
ADULT OFFENDERS
by Most Serious Offense, Alphabetical
for October 2016
snapshot date: 10/03/2016

Most Serious Offense	Murder	FA	FB	FC	FD	F1	F2	F3	F4	F5	F6	HO	Total
Dealing In Cocaine Or Narcotic Drug	.	1,004	1,111	1	.	.	92	69	121	186	.	.	2,584
Dealing In Marijuana, Hash, or Hash Oil	.	.	.	15	6	10	2	.	33
Dealing In Methamphetamine	.	268	964	.	.	.	74	76	167	259	.	.	1,808
Dealing In Sched Iv Controlled Substance	4	1	.	.	.	5
Dealing In Sched V Controlled Substance	1	.	.	1
Dealing In Schedule IV Controlled Substance	.	.	23	22	5	.	.	50
Dealing Possessing Look-Alike Substance	.	.	.	9	11	2	.	22
Dealng A Sched I, Ii, Iii Control Subst	9	4	11	.	.	.	24
Dealng In a Schedule I, II, or III Controlled Substance	.	109	576	14	2	.	701
Disarming A Law Enforcement Officer	.	.	.	6	6	.	.	12
Distribute Destructive Device To Minor	.	.	1	1
Domestic Battery	33	23	.	56
Driving While Intoxicated	1	1
Escape	2	50	47	.	99
Fail To Return To Accident Resulting in Serious Injury	8	8
Fail To Stop After Accident - Operating Vehicle Intoxicated	.	.	5	5
Fail To Stop At An Accident/Sbi/Prior	1	1
Failure Of Sex Offender To Possess Id	2	2
Failure To Appear	1	.	1
Failure To Register As A Sex Offender	.	.	.	53	6	99	7	.	165
Failure To Return Lawful Detention/Escape	.	.	13	47	19	79
Firearm Within 1 Mile School Property Without License	.	.	.	32	32
Forgery,Counterfeiting,Application Fraud	.	.	.	315	6	14	.	335
Fraud	10	8	.	18
Fraud On A Financial Institution	.	.	.	29	41	.	.	70
Habitual Offender	1	1
Habitual Offender Substance Abuse	3	2	5
Handgun Violation	.	.	.	2	2
Handgun Violation (Felony Within 15 Yrs)	.	.	.	17	172	.	.	189
Home Improvement Fraud Enhancement	.	.	.	5	5
Home Improvement Fraud Offenses	3	3
Human Sexual Trafficking	.	.	3	2	1	.	.	.	6
Identity Deception	4	2	.	6
Illegal Possession Of Firearm By Felon	.	.	.	1	1
Impersonating A Public Servant	1	.	1
Incest	.	.	24	16	2	3	.	.	45
Intimidation	.	.	.	31	18	55	12	.	116

INDIANA DEPARTMENT OF CORRECTION
ADULT OFFENDERS
by Most Serious Offense, Alphabetical
for October 2016
snapshot date: 10/03/2016

Most Serious Offense	Murder	FA	FB	FC	FD	F1	F2	F3	F4	F5	F6	HO	Total
Invasion Of Privacy	5	5	.	10
Involuntary Manslaughter	.	.	.	3	3
Kidnapping	.	89	3	4	.	2	.	.	98
Maintaining Common Nuisance	18	14	.	32
Mischief	.	.	.	1	1
Murder	2,460	2,460
Neglect Of A Dependent	.	.	54	18	10	9	5	.	96
Neglect Of A Dependent Resulting in Serious Injury	32	32
Neglect Of Dependent Resulting In Death	.	65	.	.	.	8	73
Non Support Of Dependent Child	.	.	.	92	27	3	.	.	122
Obliterating Handgun I.D.	.	.	.	3	4	.	.	7
Obstruction Of Justice	2	5	.	7
Operate Vehicle After Suspended For Life	.	.	.	144	225	.	.	369
Operating Vehicle Intoxicated Resulting in Death	.	.	60	9	23	15	.	.	107
Operating Vehicle Intoxicated Resulting in Serious Bodily Injury	.	.	.	8	5	9	2	.	24
Operating Vehicle While Intoxicated-Previous Conviction	70	2	32	.	104
Operating Vehicle With Schedule I in Body - Causing Death	.	.	.	1	1
Operating Vehicle-Habit Traffic Violator	.	.	.	3	32	18	.	53
Opererating Vehicle - Schedule I Or II Control Substance	3	3
Opererating Vehicle While Intoxicated - Endangering Person	12	12
Opererating Vehicle While Intoxicated - Prior Conviction	.	.	.	1	22	.	23
Permitting Child To Possess Firearm	.	.	.	1	1
Pointing A Firearm	1	1
Possess Chemical Reagents Or Precursors	.	.	.	24	6	.	.	30
Possess Destructive Device Or Explosive	.	1	1
Possess Methamphetamine Without Pay Tax	1	1
Possess Of Precursors	14	12	.	26
Possession Of A Controlled Substance	.	.	1	40	49	1	.	91
Possession Of Child Pornography	5	.	5
Possession Of Cocaine Or Narcotic Drug	.	74	105	55	34	.	.	9	24	48	38	.	387
Possession Of Dangerous Device	6	1	.	.	7
Possession Of Marijuana, Hash, Hash Oil	33	1	.	34
Possession Of Methamphetamine	.	7	85	31	41	.	.	21	18	57	40	.	300
Possession Of Paraphernalia	4	3	.	7
Possession Of Syringes Or Needles	.	.	.	4	14	10	13	.	41
Possession Or Use Of Legend Drug	.	.	.	1	4	3	.	8
Prisoner Poss. Dangerous Device/Material	.	.	11	3	14

INDIANA DEPARTMENT OF CORRECTION
ADULT OFFENDERS
by Most Serious Offense, Alphabetical
for October 2016
snapshot date: 10/03/2016

Most Serious Offense	Murder	FA	FB	FC	FD	F1	F2	F3	F4	F5	F6	HO	Total
Promoting Prostitution	.	.	.	4	4
Promoting Prostitution Under Age 18	.	.	7	7
Prostitution	1	1	.	2
Public Indecency	2	.	2
Rape	.	276	164	.	.	24	.	30	494
Reckless Homicide	.	.	.	24	15	.	.	39
Reckless Vehicle Work Zone Causing Death	.	.	.	1	1
Removing, Damaging, Or Altering a VIN	.	.	.	1	1
Residential Entry	9	15	.	24
Resisting Law Enforcement	.	.	7	4	19	.	.	4	.	5	24	.	63
Robbery	.	261	1,259	178	.	.	28	362	.	153	.	.	2,241
Sale Of Unregistered Security	.	.	.	2	2
Security Fraud	.	.	.	1	1
Sexual Battery	7	.	.	.	3	.	6	.	16
Sexual Misconduct Gov Employe W/Detainee	.	.	.	1	1
Sexual Misconduct With A Minor	.	3	285	57	2	.	.	.	41	31	.	.	419
Stalking	.	.	3	12	5	17	1	.	38
Strangulation	15	14	.	29
Theft,Receiving Stolen Property	.	.	.	9	231	5	165	.	410
Trafficking With An Inmate	.	.	.	14	22	.	.	36
Unlawful Firearm Poss By Serious Felon	.	.	447	132	.	.	.	579
Unlawful Transfer of Handgun Ownership	1	.	.	1
Vicarious Sexual Gratification	.	.	3	3	1	.	.	.	7
Viol/Failure Of Carriers Duty To Warn	1	1
Violation Of Custody Order	1	1
Voluntary Manslaughter	.	353	49	.	.	.	20	422
Voyeurism	2	2
Welfare Fraud	.	.	.	11	1	12
Total	2,460	5,201	8,674	2,538	885	148	302	906	1,169	2,489	676	3	25,451

INDIANA DEPARTMENT OF CORRECTION
ADULT OFFENDERS
by Most Serious Offense, Ranked
for October 2016
snapshot date: 10/03/2016

Most Serious Offense	Murder	FA	FB	FC	FD	F1	F2	F3	F4	F5	F6	HO	Total
Burglary	.	288	1,686	427	.	11	44	10	466	304	.	.	3,236
Dealing In Cocaine Or Narcotic Drug	.	1,004	1,111	1	.	.	92	69	121	186	.	.	2,584
Murder	2,460	2,460
Child Molesting	.	1,456	515	218	.	64	.	45	73	.	.	.	2,371
Robbery	.	261	1,259	178	.	.	28	362	.	153	.	.	2,241
Dealing In Methamphetamine	.	268	964	.	.	.	74	76	167	259	.	.	1,808
Attempt To Commit Felony	.	571	177	26	5	36	8	22	9	43	3	.	900
Battery	.	25	64	249	23	.	2	20	1	377	35	.	796
Dealing In a Schedule I, II, or III Controlled Substance	.	109	576	14	2	.	701
Unlawful Firearm Poss By Serious Felon	.	.	447	132	.	.	.	579
Rape	.	276	164	.	.	24	.	30	494
Voluntary Manslaughter	.	353	49	.	.	.	20	422
Sexual Misconduct With A Minor	.	3	285	57	2	.	.	.	41	31	.	.	419
Theft,Receiving Stolen Property	.	.	.	9	231	5	165	.	410
Aggravated Battery	.	.	291	.	.	1	.	104	396
Possession Of Cocaine Or Narcotic Drug	.	74	105	55	34	.	.	9	24	48	38	.	387
Operate Vehicle After Suspended For Life	.	.	.	144	225	.	.	369
Conspiracy	.	128	138	20	1	2	15	19	14	30	.	.	367
Forgery,Counterfeiting,Application Fraud	.	.	.	315	6	14	.	335
Criminal Confinement	.	.	191	38	8	.	2	43	.	42	3	.	327
Possession Of Methamphetamine	.	7	85	31	41	.	.	21	18	57	40	.	300
Criminal Deviate Conduct	.	144	110	254
Aiding Inducing/Causing An Offense	.	52	97	14	1	2	5	16	16	32	.	.	235
Handgun Violation (Felony Within 15 Yrs)	.	.	.	17	172	.	.	189
Failure To Register As A Sex Offender	.	.	.	53	6	99	7	.	165
Non Support Of Dependent Child	.	.	.	92	27	3	.	.	122
Arson	.	20	73	2	26	.	.	.	121
Intimidation	.	.	.	31	18	55	12	.	116
Auto Theft, Receiving Stolen Auto Parts	.	.	.	34	22	1	52	.	109
Operating Vehicle Intoxicated Resulting in Death	.	.	60	9	23	15	.	.	107
Operating Vehicle While Intoxicated-Previous Conviction	70	2	32	.	104
Escape	2	50	47	.	99
Kidnapping	.	89	3	4	.	2	.	.	98
Neglect Of A Dependent	.	.	54	18	10	9	5	.	96
Possession Of A Controlled Substance	.	.	1	40	49	1	.	91
Failure To Return Lawful Detention/Escape	.	.	13	47	19	79
Criminal Recklessness	.	.	.	25	15	29	5	.	74

INDIANA DEPARTMENT OF CORRECTION
ADULT OFFENDERS
by Most Serious Offense, Ranked
for October 2016
snapshot date: 10/03/2016

Most Serious Offense	Murder	FA	FB	FC	FD	F1	F2	F3	F4	F5	F6	HO	Total
Neglect Of Dependent Resulting In Death	.	65	.	.	.	8	73
Fraud On A Financial Institution	.	.	.	29	41	.	.	70
Carjacking	.	.	64	64
Resisting Law Enforcement	.	.	7	4	19	.	.	4	.	5	24	.	63
Corrupt Business Influence	.	.	.	33	28	.	.	61
Domestic Battery	33	23	.	56
Operating Vehicle-Habit Traffic Violator	.	.	.	3	32	18	.	53
Dealing In Schedule IV Controlled Substance	.	.	23	22	5	.	.	50
Incest	.	.	24	16	2	3	.	.	45
Possession Of Syringes Or Needles	.	.	.	4	14	10	13	.	41
Child Solicitation	.	.	.	11	4	.	.	.	5	19	.	.	39
Reckless Homicide	.	.	.	24	15	.	.	39
Stalking	.	.	3	12	5	17	1	.	38
Trafficking With An Inmate	.	.	.	14	22	.	.	36
Carrying Handgun Without License	.	.	.	34	34
Possession Of Marijuana, Hash, Hash Oil	33	1	.	34
Dealing In Marijuana, Hash, or Hash Oil	.	.	.	15	6	10	2	.	33
Firearm Within 1 Mile School Property Without License	.	.	.	32	32
Maintaining Common Nuisance	18	14	.	32
Neglect Of A Dependent Resulting in Serious Injury	32	32
Possess Chemical Reagents Or Precursors	.	.	.	24	6	.	.	30
Strangulation	15	14	.	29
Possess Of Precursors	14	12	.	26
Dealng A Sched I, Ii, Iii Control Subst	9	4	11	.	.	.	24
Operating Vehicle Intoxicated Resulting in Serious Bodily Injury	.	.	.	8	5	9	2	.	24
Residential Entry	9	15	.	24
Opererating Vehicle While Intoxicated - Prior Conviction	.	.	.	1	22	.	23
Child Exploitation	.	.	.	12	2	8	.	.	22
Dealing Possessing Look-Alike Substance	.	.	.	9	11	2	.	22
Accident Fail To Stop Reulting in Serious Injury or Death	.	.	5	2	1	11	.	.	19
Fraud	10	8	.	18
Sexual Battery	7	.	.	.	3	.	6	.	16
Assisting A Criminal	.	.	.	9	1	3	2	.	15
Check Fraud	.	.	.	9	4	1	.	14
Prisoner Poss. Dangerous Device/Material	.	.	11	3	14
Controlled Substance Registration	.	.	.	5	5	1	1	.	12
Disarming A Law Enforcement Officer	.	.	.	6	6	.	.	12

INDIANA DEPARTMENT OF CORRECTION
ADULT OFFENDERS
by Most Serious Offense, Ranked
for October 2016
snapshot date: 10/03/2016

Most Serious Offense	Murder	FA	FB	FC	FD	F1	F2	F3	F4	F5	F6	HO	Total
Opererating Vehicle While Intoxicated - Endangering Person	12	12
Welfare Fraud	.	.	.	11	1	12
Battery By Bodily Waste	.	.	.	3	7	10
Invasion Of Privacy	5	5	.	10
Fail To Return To Accident Resulting in Serious Injury	8	8
Possession Or Use Of Legend Drug	.	.	.	1	4	3	.	8
Battery To A Child Causing Death	.	7	7
Child Seduction	.	.	.	3	1	3	.	.	7
Obliterating Handgun I.D.	.	.	.	3	4	.	.	7
Obstruction Of Justice	2	5	.	7
Possession Of Dangerous Device	6	1	.	.	7
Possession Of Paraphernalia	4	3	.	7
Promoting Prostitution Under Age 18	.	.	7	7
Vicarious Sexual Gratification	.	.	3	3	1	.	.	.	7
Human Sexual Trafficking	.	.	3	2	1	.	.	.	6
Identity Deception	4	2	.	6
Dealing In Sched Iv Controlled Substance	4	1	.	.	.	5
Fail To Stop After Accident - Operating Vehicle Intoxicated	.	.	5	5
Habitual Offender Substance Abuse	3	2	5
Home Improvement Fraud Enhancement	.	.	.	5	5
Possession Of Child Pornography	5	.	5
Promoting Prostitution	.	.	.	4	4
Conversion	2	1	.	3
Deal Sub Represented To Be Controlled Sub	3	.	3
Home Improvement Fraud Offenses	3	3
Involuntary Manslaughter	.	.	.	3	3
Opererating Vehicle - Schedule I Or II Control Substance	3	3
Bribery	2	.	.	2
Criminal Trespass	1	1	.	2
Dangerous Control Of A Handgun	2	.	.	2
Deal Substance Represented To Be Controlled Substance	2	2
Dealing In A Schedule V Controlled Substance	.	.	2	2
Failure Of Sex Offender To Possess Id	2	2
Handgun Violation	.	.	.	2	2
Prostitution	1	1	.	2
Public Indecency	2	.	2
Sale Of Unregistered Security	.	.	.	2	2

INDIANA DEPARTMENT OF CORRECTION
ADULT OFFENDERS
by Most Serious Offense, Ranked
for October 2016
snapshot date: 10/03/2016

Most Serious Offense	Murder	FA	FB	FC	FD	F1	F2	F3	F4	F5	F6	HO	Total
Voyeurism	2	2
Aiding in Manufacture of Sch II Controlled Substance	1	.	1
Animal Fighting Contest	1	1
Assisting Suicide	.	.	.	1	1
Battery On Law Enforcement	1	1
Causing Suicide	.	.	1	1
Criminal Gang Activity	1	1
Dealing In Sched V Controlled Substance	1	.	.	1
Distribute Destructive Device To Minor	.	.	1	1
Driving While Intoxicated	1	1
Fail To Stop At An Accident/Sbi/Prior	1	1
Failure To Appear	1	.	1
Habitual Offender	1	1
Illegal Possession Of Firearm By Felon	.	.	.	1	1
Impersonating A Public Servant	1	.	1
Mischief	.	.	.	1	1
Operating Vehicle With Schedule I in Body - Causing Death	.	.	.	1	1
Permitting Child To Possess Firearm	.	.	.	1	1
Pointing A Firearm	1	1
Possess Destructive Device Or Explosive	.	1	1
Possess Methamphetamine Without Pay Tax	1	1
Reckless Vehicle Work Zone Causing Death	.	.	.	1	1
Removing, Damaging, Or Altering a VIN	.	.	.	1	1
Security Fraud	.	.	.	1	1
Sexual Misconduct Gov Employee W/Detainee	.	.	.	1	1
Unlawful Transfer of Handgun Ownership	1	.	.	1
Viol/Failure Of Carriers Duty To Warn	1	1
Violation Of Custody Order	1	1
Total	2,460	5,201	8,674	2,538	885	148	302	906	1,169	2,489	676	3	25,451

INDIANA DEPARTMENT OF CORRECTION
ADULT OFFENDERS
by Most Serious Offense
for October 2016
snapshot date: 10/03/2016

Branchville Correctional Facility												
Most Serious Offense	Murder	FA	FB	FC	FD	F1	F2	F3	F4	F5	F6	Total
Accident Fail To Stop Resulting in Serious Injury or Death	1	.	1
Aggravated Battery	.	.	7	6	.	.	.	13
Aiding Inducing/Causing An Offense	.	.	7	1	.	.	1	1	1	2	.	13
Arson	.	.	3	3
Attempt To Commit Felony	.	8	10	1	.	.	1	1	2	4	.	27
Auto Theft, Receiving Stolen Auto Parts	.	.	.	1	2	3	6
Battery	.	.	2	25	.	.	.	2	.	31	5	65
Battery On Law Enforcement	1	1
Burglary	.	4	114	32	.	.	1	1	57	33	.	242
Carrying Handgun Without License	.	.	.	1	1
Conspiracy	.	2	13	3	.	.	1	4	1	4	.	28
Controlled Substance Registration	1	.	1
Corrupt Business Influence	1	.	1
Criminal Confinement	.	.	7	1	1	.	.	5	.	3	1	18
Criminal Recklessness	.	.	.	2	1	2	3	8
Criminal Trespass	1	1
Dealing In Cocaine Or Narcotic Drug	.	15	77	.	.	.	5	8	10	9	.	124
Dealing In Marijuana, Hash, or Hash Oil	.	.	.	2	2	.	4
Dealing In Methamphetamine	.	9	101	.	.	.	9	15	35	18	.	187
Dealing In Sched Iv Controlled Substance	2	.	.	.	2
Dealng A Sched I, Ii, Iii Control Subst	2	2
Dealng In a Schedule I, II, or III Controlled Substance	.	4	49	1	.	54
Disarming A Law Enforcement Officer	.	.	.	1	1
Domestic Battery	2	2	4
Escape	1	9	4	14
Failure Of Sex Offender To Possess Id	1	1
Failure To Register As A Sex Offender	.	.	.	2	11	.	13
Failure To Return Lawful Detention/Escape	.	.	1	3	1	5
Forgery,Counterfeiting,Application Fraud	.	.	.	20	1	21
Fraud	1	1	2
Fraud On A Financial Institution	5	.	5
Habitual Offender Substance Abuse	1	1
Handgun Violation (Felony Within 15 Yrs)	.	.	.	1	13	.	14
Home Improvement Fraud Enhancement	.	.	.	1	1
Intimidation	.	.	.	3	1	3	3	10
Invasion Of Privacy	1	1
Kidnapping	1	.	1

INDIANA DEPARTMENT OF CORRECTION
ADULT OFFENDERS
by Most Serious Offense
for October 2016
snapshot date: 10/03/2016

Branchville Correctional Facility												
Most Serious Offense	Murder	FA	FB	FC	FD	F1	F2	F3	F4	F5	F6	Total
Maintaining Common Nuisance	1	1
Murder	9	9
Neglect Of A Dependent	.	.	2	1	1	4
Non Support Of Dependent Child	.	.	.	12	3	15
Operate Vehicle After Suspended For Life	.	.	.	14	24	.	38
Operating Vehicle Intoxicated Resulting in Death	.	.	6	1	.	.	7
Operating Vehicle Intoxicated Resulting in Serious Bodily Injury	.	.	.	1	1	2
Operating Vehicle While Intoxicated-Previous Conviction	6	1	7
Operating Vehicle-Habit Traffic Violator	.	.	.	1	2	1	4
Opererating Vehicle While Intoxicated - Endangering Person	1	1
Opererating Vehicle While Intoxicated - Prior Conviction	2	2
Possess Chemical Reagents Or Precursors	.	.	.	4	4
Possess Of Precursors	1	1	2
Possession Of A Controlled Substance	.	.	.	3	1	4
Possession Of Cocaine Or Narcotic Drug	.	1	9	3	4	.	.	.	4	4	2	27
Possession Of Dangerous Device	1	.	.	1
Possession Of Marijuana, Hash, Hash Oil	2	2
Possession Of Methamphetamine	.	.	13	3	4	.	.	3	6	6	7	42
Possession Of Syringes Or Needles	1	2	.	3
Reckless Homicide	.	.	.	3	1	.	4
Reckless Vehicle Work Zone Causing Death	.	.	.	1	1
Residential Entry	1	1
Resisting Law Enforcement	.	.	.	1	2	.	.	1	.	.	2	6
Robbery	.	1	46	7	.	.	.	25	.	14	.	93
Sexual Misconduct With A Minor	.	.	1	1
Stalking	.	.	.	1	1	1	3
Strangulation	3	3
Theft,Receiving Stolen Property	13	14	27
Trafficking With An Inmate	1	.	1
Unlawful Firearm Poss By Serious Felon	.	.	24	18	.	.	42
Viol/Failure Of Carriers Duty To Warn	1	1
Voluntary Manslaughter	.	4	2	6
Welfare Fraud	.	.	.	1	1
Total	9	48	494	156	57	.	20	74	137	207	59	1,261

INDIANA DEPARTMENT OF CORRECTION
ADULT OFFENDERS
by Most Serious Offense
for October 2016
snapshot date: 10/03/2016

Correctional Industrial Facility												
Most Serious Offense	Murder	FA	FB	FC	FD	F1	F2	F3	F4	F5	F6	Total
Accident Fail To Stop Reulting in Serious Injury or Death	.	.	1	1
Aggravated Battery	.	.	31	9	.	.	.	40
Aiding Inducing/Causing An Offense	.	6	8	14
Arson	.	4	7	1	.	.	12
Assisting A Criminal	.	.	.	1	1
Attempt To Commit Felony	.	35	13	1	.	.	.	49
Auto Theft, Receiving Stolen Auto Parts	.	.	.	2	1	1	4
Battery	.	1	12	14	1	.	.	1	.	6	1	36
Burglary	.	30	152	15	.	.	11	.	14	1	.	223
Carjacking	.	.	7	7
Child Molesting	.	54	9	4	.	1	.	3	2	.	.	73
Conspiracy	.	20	11	.	.	.	2	1	.	1	.	35
Criminal Confinement	.	.	23	.	.	.	1	5	.	1	.	30
Criminal Deviate Conduct	.	3	3	6
Criminal Gang Activity	1	1
Criminal Recklessness	.	.	.	1	1	2
Dealing In Cocaine Or Narcotic Drug	.	135	67	.	.	.	13	4	1	2	.	222
Dealing In Methamphetamine	.	45	54	.	.	.	12	2	1	.	.	114
Dealing In Sched Iv Controlled Substance	1	.	.	.	1
Dealing In Schedule IV Controlled Substance	.	.	2	2
Dealing Possessing Look-Alike Substance	.	.	.	1	1
Dealng In a Schedule I, II, or III Controlled Substance	.	8	27	35
Domestic Battery	1	1
Escape	2	2	4
Fail To Return To Accident Resulting in Serious Injury	2	.	.	.	2
Failure To Register As A Sex Offender	.	.	.	4	1	5
Failure To Return Lawful Detention/Escape	.	.	2	4	1	7
Firearm Within 1 Mile School Property Without License	.	.	.	1	1
Forgery,Counterfeiting,Application Fraud	.	.	.	12	1	13
Fraud	1	1
Fraud On A Financial Institution	.	.	.	1	1
Habitual Offender Substance Abuse	1	1

INDIANA DEPARTMENT OF CORRECTION
ADULT OFFENDERS
by Most Serious Offense
for October 2016
snapshot date: 10/03/2016

Correctional Industrial Facility												
Most Serious Offense	Murder	FA	FB	FC	FD	F1	F2	F3	F4	F5	F6	Total
Handgun Violation (Felony Within 15 Yrs)	.	.	.	1	5	.	6
Home Improvement Fraud Enhancement	.	.	.	1	1
Human Sexual Trafficking	.	.	1	1
Incest	.	.	1	1
Intimidation	.	.	.	3	3	.	6
Kidnapping	.	9	9
Murder	99	99
Neglect Of A Dependent	.	.	2	2
Neglect Of A Dependent Resulting In Serious Injury	1	.	.	.	1
Neglect Of Dependent Resulting In Death	.	3	.	.	.	2	5
Non Support Of Dependent Child	.	.	.	1	1
Obliterating Handgun I.D.	1	.	1
Obstruction Of Justice	1	1
Operate Vehicle After Suspended For Life	.	.	.	4	3	.	7
Operating Vehicle Intoxicated Resulting in Death	.	.	1	1	.	.	2
Operating Vehicle While Intoxicated-Previous Conviction	1	1	2
Possess Chemical Reagents Or Precursors	.	.	.	1	1
Possess Destructive Device Or Explosive	.	1	1
Possess Of Precursors	1	1
Possession Of A Controlled Substance	.	.	1	2	2	5
Possession Of Cocaine Or Narcotic Drug	.	7	6	.	1	.	.	.	1	.	1	16
Possession Of Marijuana, Hash, Hash Oil	1	1
Possession Of Methamphetamine	.	.	4	2	.	.	.	2	1	.	.	9
Prisoner Poss. Dangerous Device/Material	.	.	1	1
Promoting Prostitution	.	.	.	1	1
Rape	.	2	6	.	.	1	9
Reckless Homicide	.	.	.	2	2
Residential Entry	1	1
Resisting Law Enforcement	1	.	.	1	.	.	.	2
Robbery	.	24	110	15	.	.	2	22	.	2	.	175
Sexual Misconduct With A Minor	.	.	8	8
Stalking	1	.	1

INDIANA DEPARTMENT OF CORRECTION
 ADULT OFFENDERS
 by Most Serious Offense
 for October 2016
 snapshot date: 10/03/2016

Correctional Industrial Facility												
Most Serious Offense	Murder	FA	FB	FC	FD	F1	F2	F3	F4	F5	F6	Total
Strangulation	1	1
Theft,Receiving Stolen Property	.	.	.	1	8	1	10
Trafficking With An Inmate	.	.	.	1	2	.	3
Unlawful Firearm Poss By Serious Felon	.	.	38	1	.	.	39
Voluntary Manslaughter	.	36	3	.	.	.	3	42
Total	99	423	611	95	23	4	44	55	23	30	12	1,419

INDIANA DEPARTMENT OF CORRECTION
ADULT OFFENDERS
by Most Serious Offense
for October 2016
snapshot date: 10/03/2016

Chain O'Lakes Correctional Facility													
Most Serious Offense	Murder	FA	FB	FC	FD	F1	F2	F3	F4	F5	F6	HO	Total
Aiding Inducing/Causing An Offense	1	1
Attempt To Commit Felony	.	.	2	1	.	1	.	.	4
Burglary	.	.	9	5	3	7	.	.	24
Corrupt Business Influence	1	.	.	1
Dealing In Cocaine Or Narcotic Drug	.	7	6	1	.	.	.	14
Dealing In Methamphetamine	.	2	18	.	.	.	1	.	1	9	.	.	31
Dealing Possessing Look-Alike Substance	1	.	.	1
Dealng In a Schedule I, II, or III Controlled Substance	.	1	4	5
Domestic Battery	1	1
Firearm Within 1 Mile School Property Without License	.	.	.	2	2
Habitual Offender Substance Abuse	1	1
Handgun Violation (Felony Within 15 Yrs)	1	.	.	1
Intimidation	1	1
Neglect Of A Dependent	.	.	1	1
Non Support Of Dependent Child	.	.	.	1	1
Operate Vehicle After Suspended For Life	.	.	.	3	3	.	.	6
Operating Vehicle Intoxicated Resulting in Death	.	.	1	1	.	.	2
Operating Vehicle While Intoxicated-Previous Conviction	1	1	.	2
Operating Vehicle-Habit Traffic Violator	1	1
Possession Of A Controlled Substance	1	1
Possession Of Cocaine Or Narcotic Drug	.	1	1
Possession Of Methamphetamine	.	.	1	1
Robbery	.	.	8	1	9
Theft,Receiving Stolen Property	.	.	.	1	1	2	.	4
Unlawful Firearm Poss By Serious Felon	.	.	2	2
Total	.	11	52	12	6	.	1	3	5	24	3	1	118

INDIANA DEPARTMENT OF CORRECTION
ADULT OFFENDERS
by Most Serious Offense
for October 2016
snapshot date: 10/03/2016

Edinburgh Correctional Facility												
Most Serious Offense	Murder	FA	FB	FC	FD	F1	F2	F3	F4	F5	F6	Total
Accident Fail To Stop Resulting in Serious Injury or Death	1	.	1
Aiding Inducing/Causing An Offense	.	.	4	1	1	.	6
Arson	.	.	1	1	.	.	2
Assisting A Criminal	.	.	.	1	1
Attempt To Commit Felony	.	1	1	1	2	.	5
Auto Theft, Receiving Stolen Auto Parts	.	.	.	1	3	4
Battery	1	.	1
Bribery	1	.	1
Burglary	.	.	22	13	14	16	.	65
Conspiracy	.	1	2	1	.	4
Criminal Recklessness	1	1
Dealing In Cocaine Or Narcotic Drug	.	13	28	.	.	.	1	.	5	3	.	50
Dealing In Marijuana, Hash, or Hash Oil	.	.	.	1	1
Dealing In Methamphetamine	.	5	33	1	3	5	.	47
Dealing In Schedule IV Controlled Substance	.	.	1	1
Dealing In a Schedule I, II, or III Controlled Substance	.	1	19	1	21
Firearm Within 1 Mile School Property Without License	.	.	.	1	1
Forgery,Counterfeiting,Application Fraud	.	.	.	11	1	12
Fraud On A Financial Institution	1	.	1
Habitual Offender Substance Abuse	1	1
Handgun Violation (Felony Within 15 Yrs)	9	.	9
Intimidation	1	1
Invasion Of Privacy	1	1
Non Support Of Dependent Child	.	.	.	4	3	7
Obliterating Handgun I.D.	1	.	1
Operate Vehicle After Suspended For Life	.	.	.	5	12	.	17
Operating Vehicle Intoxicated Resulting in Death	.	.	6	1	.	7
Operating Vehicle While Intoxicated-Previous Conviction	4	1	5
Operating Vehicle-Habit Traffic Violator	1	1	2
Opererating Vehicle While Intoxicated - Endangering Person	1	1
Possess Of Precursors	1	1
Possession Of A Controlled Substance	.	.	.	1	1	2

INDIANA DEPARTMENT OF CORRECTION
 ADULT OFFENDERS
 by Most Serious Offense
 for October 2016
 snapshot date: 10/03/2016

Edinburgh Correctional Facility												
Most Serious Offense	Murder	FA	FB	FC	FD	F1	F2	F3	F4	F5	F6	Total
Possession Of Cocaine Or Narcotic Drug	.	1	.	1	1	2	.	5
Possession Of Methamphetamine	.	1	2	1	1	4	.	9
Possession Of Syringes Or Needles	2	1	3
Robbery	.	.	6	2	.	.	.	1	.	3	.	12
Theft,Receiving Stolen Property	9	2	2	13
Trafficking With An Inmate	1	.	1
Unlawful Firearm Poss By Serious Felon	.	.	4	4
Total	.	23	129	43	27	.	1	2	24	69	9	327

INDIANA DEPARTMENT OF CORRECTION
ADULT OFFENDERS
by Most Serious Offense
for October 2016
snapshot date: 10/03/2016

Heritage Trail Correctional Facility												
Most Serious Offense	Murder	FA	FB	FC	FD	F1	F2	F3	F4	F5	F6	Total
Accident Fail To Stop Reulting in Serious Injury or Death	.	.	.	1	1
Aggravated Battery	.	.	2	2	.	.	.	4
Aiding Inducing/Causing An Offense	.	.	1	1	.	.	.	1	1	2	.	6
Arson	.	.	2	1	.	.	3
Assisting A Criminal	1	.	1
Attempt To Commit Felony	.	.	1	2	.	.	.	1	.	3	.	7
Auto Theft, Receiving Stolen Auto Parts	.	.	.	1	1	5	7
Battery	.	.	1	16	6	.	.	1	.	59	4	87
Burglary	.	.	75	23	24	22	.	144
Carjacking	.	.	4	4
Carrying Handgun Without License	.	.	.	3	3
Check Fraud	1	1
Conspiracy	.	.	3	2	1	3	.	9
Corrupt Business Influence	.	.	.	2	2	.	4
Criminal Confinement	.	.	.	1	.	.	.	2	.	4	.	7
Criminal Recklessness	.	.	.	3	3	3	.	9
Dealing In Cocaine Or Narcotic Drug	.	2	42	.	.	.	2	4	8	8	.	66
Dealing In Marijuana, Hash, or Hash Oil	1	1	.	2
Dealing In Methamphetamine	.	2	36	.	.	.	2	1	2	9	.	52
Dealing In Schedule IV Controlled Substance	.	.	2	2	4
Dealng A Sched I, Ii, Iii Control Subst	1	.	.	.	1
Dealng In a Schedule I, II, or III Controlled Substance	.	.	29	29
Disarming A Law Enforcement Officer	.	.	.	2	2
Domestic Battery	11	3	14
Escape	1	1	2
Failure To Return Lawful Detention/Escape	.	.	.	2	3	5
Forgery,Counterfeiting,Application Fraud	.	.	.	11	1	12
Fraud	1	1
Fraud On A Financial Institution	.	.	.	1	1
Handgun Violation (Felony Within 15 Yrs)	19	.	19
Intimidation	.	.	.	1	1	7	1	10
Invasion Of Privacy	1	1	2
Maintaining Common Nuisance	1	1	2

INDIANA DEPARTMENT OF CORRECTION
ADULT OFFENDERS
by Most Serious Offense
for October 2016
snapshot date: 10/03/2016

Heritage Trail Correctional Facility												
Most Serious Offense	Murder	FA	FB	FC	FD	F1	F2	F3	F4	F5	F6	Total
Murder	1	1
Neglect Of A Dependent	.	.	2	1	1	2	.	6
Neglect Of A Dependent Resulting in Serious Injury	1	.	.	.	1
Non Support Of Dependent Child	.	.	.	21	5	26
Operate Vehicle After Suspended For Life	.	.	.	5	14	.	19
Operating Vehicle Intoxicated Resulting in Serious Bodily Injury	.	.	.	1	1	2
Operating Vehicle While Intoxicated-Previous Conviction	7	1	8
Operating Vehicle-Habit Traffic Violator	5	1	6
Opererating Vehicle - Schedule I Or II Control Substance	1	1
Opererating Vehicle While Intoxicated - Prior Conviction	1	1
Possess Chemical Reagents Or Precursors	.	.	.	1	1
Possess Of Precursors	1	1
Possession Of A Controlled Substance	.	.	.	1	3	4
Possession Of Cocaine Or Narcotic Drug	.	.	5	9	1	.	.	.	2	5	2	24
Possession Of Dangerous Device	1	.	.	1
Possession Of Marijuana, Hash, Hash Oil	4	4
Possession Of Methamphetamine	.	.	2	2	2	6	4	16
Possession Of Syringes Or Needles	.	.	.	1	1	1	1	4
Possession Or Use Of Legend Drug	2	2
Reckless Homicide	3	.	3
Residential Entry	1	1
Resisting Law Enforcement	1	2	3
Robbery	.	.	17	8	.	.	.	22	.	16	.	63
Stalking	.	.	.	1	1	.	2
Strangulation	1	1	2
Theft,Receiving Stolen Property	15	11	26
Trafficking With An Inmate	1	.	1
Unlawful Firearm Poss By Serious Felon	.	.	8	14	.	.	22
Unlawful Transfer of Handgun Ownership	1	.	1
Total	1	4	232	123	82	.	4	38	54	194	41	773

INDIANA DEPARTMENT OF CORRECTION
ADULT OFFENDERS
by Most Serious Offense
for October 2016
snapshot date: 10/03/2016

Indianapolis Re-Entry Facility												
Most Serious Offense	Murder	FA	FB	FC	FD	F1	F2	F3	F4	F5	F6	Total
Aggravated Battery	.	.	3	3
Aiding Inducing/Causing An Offense	.	.	1	1
Arson	.	1	1
Attempt To Commit Felony	.	8	3	11
Auto Theft, Receiving Stolen Auto Parts	.	.	.	1	1
Battery	.	.	2	2	4
Burglary	.	4	20	6	2	2	.	34
Conspiracy	.	3	3	1	.	7
Criminal Confinement	.	.	3	3
Criminal Recklessness	.	.	.	1	1
Dealing In Cocaine Or Narcotic Drug	.	24	31	1	.	1	.	57
Dealing In Marijuana, Hash, or Hash Oil	.	.	.	1	1
Dealing In Methamphetamine	.	4	22	1	3	.	30
Dealng In a Schedule I, II, or III Controlled Substance	.	2	23	25
Firearm Within 1 Mile School Property Without License	.	.	.	1	1
Forgery,Counterfeiting,Application Fraud	.	.	.	3	3
Handgun Violation (Felony Within 15 Yrs)	1	.	1
Home Improvement Fraud Enhancement	.	.	.	1	1
Murder	12	12
Non Support Of Dependent Child	1	.	1
Operate Vehicle After Suspended For Life	.	.	.	1	2	.	3
Operating Vehicle Intoxicated Resulting in Death	.	.	3	1	4
Operating Vehicle Intoxicated Resulting in Serious Bodily Injury	1	.	1
Opererating Vehicle While Intoxicated - Prior Conviction	.	.	.	1	1
Permitting Child To Possess Firearm	.	.	.	1	1
Possession Of Cocaine Or Narcotic Drug	.	.	.	1	1
Possession Of Methamphetamine	.	.	3	3
Reckless Homicide	.	.	.	1	1
Robbery	.	5	22	6	.	.	.	1	.	.	.	34
Theft,Receiving Stolen Property	.	.	.	1	1
Unlawful Firearm Poss By Serious Felon	.	.	11	1	.	.	12
Voluntary Manslaughter	.	10	2	12
Total	12	61	152	29	.	.	.	2	4	12	.	272

INDIANA DEPARTMENT OF CORRECTION
ADULT OFFENDERS
by Most Serious Offense
for October 2016
snapshot date: 10/03/2016

Indiana State Prison												
Most Serious Offense	Murder	FA	FB	FC	FD	F1	F2	F3	F4	F5	F6	Total
Aggravated Battery	.	.	24	5	.	.	.	29
Aiding Inducing/Causing An Offense	.	4	8	2	14
Arson	.	1	1	2
Assisting A Criminal	1	.	1
Attempt To Commit Felony	.	104	14	.	.	8	1	.	.	2	.	129
Auto Theft, Receiving Stolen Auto Parts	.	.	.	1	1
Battery	.	7	5	11	1	8	2	34
Burglary	.	49	87	12	.	3	3	.	3	4	.	161
Check Fraud	.	.	.	1	1
Child Molesting	.	227	18	1	.	11	.	1	1	.	.	259
Conspiracy	.	17	3	20
Corrupt Business Influence	.	.	.	2	2
Criminal Confinement	.	.	17	1	.	18
Criminal Deviate Conduct	.	27	5	32
Criminal Recklessness	.	.	.	1	1	2
Dealing In Cocaine Or Narcotic Drug	.	138	54	.	.	.	3	2	2	2	.	201
Dealing In Marijuana, Hash, or Hash Oil	.	.	.	1	1
Dealing In Methamphetamine	.	23	19	.	.	.	1	.	1	2	.	46
Dealing Possessing Look-Alike Substance	.	.	.	1	1
Dealng In a Schedule I, II, or III Controlled Substance	.	5	15	20
Domestic Battery	1	1
Escape	1	.	1
Failure To Appear	1	1
Failure To Register As A Sex Offender	.	.	.	2	2
Failure To Return Lawful Detention/Escape	.	.	2	2	4
Forgery,Counterfeiting,Application Fraud	.	.	.	6	6
Fraud On A Financial Institution	.	.	.	1	1
Handgun Violation (Felony Within 15 Yrs)	1	.	1
Human Sexual Trafficking	.	.	1	1
Incest	.	.	1	1
Intimidation	.	.	.	2	1	3
Kidnapping	.	20	20
Maintaining Common Nuisance	1	1

INDIANA DEPARTMENT OF CORRECTION
ADULT OFFENDERS
by Most Serious Offense
for October 2016
snapshot date: 10/03/2016

Indiana State Prison												
Most Serious Offense	Murder	FA	FB	FC	FD	F1	F2	F3	F4	F5	F6	Total
Murder	728	728
Neglect Of A Dependent	.	.	4	1	5
Neglect Of Dependent Resulting In Death	.	10	.	.	.	1	11
Operate Vehicle After Suspended For Life	.	.	.	6	5	.	11
Operating Vehicle Intoxicated Resulting in Death	.	.	4	4
Operating Vehicle While Intoxicated-Previous Conviction	1	1
Operating Vehicle-Habit Traffic Violator	1	1
Possess Chemical Reagents Or Precursors	.	.	.	2	2
Possession Of A Controlled Substance	1	1
Possession Of Cocaine Or Narcotic Drug	.	12	2	2	16
Possession Of Marijuana, Hash, Hash Oil	1	1
Possession Of Methamphetamine	.	.	1	1	2
Possession Of Paraphernalia	1	1
Prisoner Poss. Dangerous Device/Material	.	.	2	2
Rape	.	67	9	.	.	4	.	2	.	.	.	82
Reckless Homicide	.	.	.	1	1
Resisting Law Enforcement	.	.	3	.	1	4
Robbery	.	46	106	9	.	.	1	9	.	3	.	174
Sexual Misconduct With A Minor	.	1	8	9
Stalking	2	.	2
Theft,Receiving Stolen Property	5	1	6
Unlawful Firearm Poss By Serious Felon	.	.	27	3	.	.	30
Voluntary Manslaughter	.	69	5	.	.	.	1	75
Total	728	827	445	67	13	27	10	19	10	32	8	2,186

INDIANA DEPARTMENT OF CORRECTION
ADULT OFFENDERS
by Most Serious Offense
for October 2016
snapshot date: 10/03/2016

Indiana Women's Prison												
Most Serious Offense	Murder	FA	FB	FC	FD	F1	F2	F3	F4	F5	F6	Total
Aggravated Battery	.	.	4	5	.	.	.	9
Aiding Inducing/Causing An Offense	.	5	2	7
Arson	.	1	4	3	.	.	8
Assisting A Criminal	.	.	.	1	1	2
Attempt To Commit Felony	.	13	1	.	1	15
Auto Theft, Receiving Stolen Auto Parts	.	.	.	1	1	2	4
Battery	.	2	2	3	2	.	.	1	.	21	.	31
Battery By Bodily Waste	1	1
Battery To A Child Causing Death	.	1	1
Burglary	.	2	16	2	11	5	.	36
Check Fraud	.	.	.	1	1
Child Molesting	.	.	2	1	.	.	3
Conspiracy	.	4	5	1	.	.	1	2	.	2	.	15
Controlled Substance Registration	.	.	.	1	1	2
Corrupt Business Influence	.	.	.	1	1
Criminal Confinement	.	.	2	1	1	.	4
Criminal Recklessness	.	.	.	1	1	.	2
Dealing In Cocaine Or Narcotic Drug	.	11	22	.	.	.	3	.	4	7	.	47
Dealing In Methamphetamine	.	16	25	.	.	.	3	3	4	10	.	61
Dealing In Schedule IV Controlled Substance	.	.	2	2	4
Dealing Possessing Look-Alike Substance	.	.	.	1	1
Dealng A Sched I, Ii, Iii Control Subst	1	.	1	.	.	2
Dealng In a Schedule I, II, or III Controlled Substance	.	7	29	1	.	37
Escape	2	3	5
Fail To Return To Accident Resulting in Serious Injury	1	.	.	.	1
Failure To Return Lawful Detention/Escape	.	.	.	1	2	3
Forgery,Counterfeiting,Application Fraud	.	.	.	31	3	34
Fraud	2	1	3
Fraud On A Financial Institution	.	.	.	2	2
Handgun Violation	.	.	.	1	1
Identity Deception	2	2
Intimidation	3	.	3
Maintaining Common Nuisance	1	1	2

INDIANA DEPARTMENT OF CORRECTION
ADULT OFFENDERS
by Most Serious Offense
for October 2016
snapshot date: 10/03/2016

Indiana Women's Prison												
Most Serious Offense	Murder	FA	FB	FC	FD	F1	F2	F3	F4	F5	F6	Total
Murder	72	72
Neglect Of A Dependent	.	.	9	2	1	1	13
Neglect Of A Dependent Resulting in Serious Injury	3	.	.	.	3
Neglect Of Dependent Resulting In Death	.	12	.	.	.	3	15
Operate Vehicle After Suspended For Life	.	.	.	2	2
Operating Vehicle Intoxicated Resulting in Death	.	.	3	1	1	1	.	6
Operating Vehicle Intoxicated Resulting in Serious Bodily Injury	1	.	1
Operating Vehicle While Intoxicated-Previous Conviction	3	3
Opererating Vehicle While Intoxicated - Prior Conviction	1	1
Possess Chemical Reagents Or Precursors	.	.	.	2	2
Possess Of Precursors	1	1
Possession Of A Controlled Substance	.	.	.	4	2	6
Possession Of Cocaine Or Narcotic Drug	.	1	3	2	1	2	.	9
Possession Of Marijuana, Hash, Hash Oil	1	1
Possession Of Methamphetamine	.	.	4	3	3	.	.	1	.	2	3	16
Possession Of Paraphernalia	1	1
Possession Of Syringes Or Needles	.	.	.	1	1	1	.	3
Promoting Prostitution	.	.	.	1	1
Promoting Prostitution Under Age 18	.	.	2	2
Reckless Homicide	.	.	.	2	1	.	3
Resisting Law Enforcement	2	2
Robbery	.	5	20	2	.	.	2	8	.	4	.	41
Sexual Misconduct With A Minor	1	.	1
Theft,Receiving Stolen Property	20	12	32
Trafficking With An Inmate	.	.	.	3	2	.	5
Unlawful Firearm Poss By Serious Felon	.	.	2	2
Violation Of Custody Order	1	1
Voluntary Manslaughter	.	7	1	8
Welfare Fraud	.	.	.	2	2
Total	72	87	160	78	46	3	10	24	26	68	31	605

INDIANA DEPARTMENT OF CORRECTION
ADULT OFFENDERS
by Most Serious Offense
for October 2016
snapshot date: 10/03/2016

Madison Correctional Facility												
Most Serious Offense	Murder	FA	FB	FC	FD	F1	F2	F3	F4	F5	F6	Total
Accident Fail To Stop Resulting in Serious Injury or Death	1	1	.	2
Aiding Inducing/Causing An Offense	.	.	5	1	3	.	9
Arson	1	.	.	.	1
Attempt To Commit Felony	1	1	.	2
Auto Theft, Receiving Stolen Auto Parts	1	1	2
Battery	4	.	4
Burglary	.	1	22	9	19	5	.	56
Conspiracy	.	3	7	2	.	.	1	2	3	5	.	23
Controlled Substance Registration	.	.	.	1	1
Corrupt Business Influence	.	.	.	4	3	.	7
Dealing In Cocaine Or Narcotic Drug	.	6	43	.	.	.	4	5	13	22	.	93
Dealing In Methamphetamine	.	7	66	.	.	.	2	5	15	18	.	113
Dealing In Schedule IV Controlled Substance	.	.	4	2	6
Dealing Possessing Look-Alike Substance	4	.	4
Dealing A Sched I, II, III Control Subst	1	.	.	1
Dealing In a Schedule I, II, or III Controlled Substance	.	6	46	4	1	57
Domestic Battery	1	1	2
Forgery,Counterfeiting,Application Fraud	.	.	.	23	1	24
Fraud	1	1	2
Fraud On A Financial Institution	.	.	.	4	1	.	5
Identity Deception	1	1
Maintaining Common Nuisance	2	1	3
Murder	4	4
Neglect Of A Dependent	.	.	2	3	1	6
Neglect Of Dependent Resulting In Death	.	1	1
Operate Vehicle After Suspended For Life	.	.	.	2	6	.	8
Operating Vehicle Intoxicated Resulting in Death	.	.	1	1
Operating Vehicle Intoxicated Resulting in Serious Bodily Injury	.	.	.	1	1
Operating Vehicle While Intoxicated-Previous Conviction	2	1	3	6
Operating Vehicle-Habit Traffic Violator	2	2
Possess Chemical Reagents Or Precursors	.	.	.	3	3
Possess Of Precursors	1	1
Possession Of A Controlled Substance	.	.	.	3	8	11

INDIANA DEPARTMENT OF CORRECTION
ADULT OFFENDERS
by Most Serious Offense
for October 2016
snapshot date: 10/03/2016

Madison Correctional Facility												
Most Serious Offense	Murder	FA	FB	FC	FD	F1	F2	F3	F4	F5	F6	Total
Possession Of Cocaine Or Narcotic Drug	.	2	2	.	4	.	.	.	1	6	2	17
Possession Of Marijuana, Hash, Hash Oil	1	1
Possession Of Methamphetamine	.	.	7	2	3	.	.	1	1	1	1	16
Possession Of Syringes Or Needles	1	3	4
Possession Or Use Of Legend Drug	1	1
Prostitution	1	1
Residential Entry	1	1
Robbery	.	.	3	2	.	.	.	3	.	4	.	12
Theft,Receiving Stolen Property	.	.	.	1	13	9	23
Trafficking With An Inmate	.	.	.	2	5	.	7
Unlawful Firearm Poss By Serious Felon	.	.	1	1
Voluntary Manslaughter	.	1	1
Welfare Fraud	.	.	.	3	3
Total	4	27	209	68	42	.	7	17	54	94	28	550

INDIANA DEPARTMENT OF CORRECTION
ADULT OFFENDERS
by Most Serious Offense
for October 2016
snapshot date: 10/03/2016

Miami Correctional Facility												
Most Serious Offense	Murder	FA	FB	FC	FD	F1	F2	F3	F4	F5	F6	Total
Accident Fail To Stop Resulting in Serious Injury or Death	.	.	3	1	.	4
Aggravated Battery	.	.	83	27	.	.	.	110
Aiding Inducing/Causing An Offense	.	11	18	1	.	.	4	2	1	.	.	37
Arson	.	3	10	2	.	.	15
Assisting A Criminal	.	.	.	1	1	2
Attempt To Commit Felony	.	95	27	5	.	17	1	5	.	2	.	152
Auto Theft, Receiving Stolen Auto Parts	.	.	.	4	4
Battery	.	4	15	25	3	.	.	2	.	21	1	71
Battery To A Child Causing Death	.	2	2
Burglary	.	55	296	53	.	1	13	.	30	13	.	461
Carjacking	.	.	16	16
Carrying Handgun Without License	.	.	.	6	6
Causing Suicide	.	.	1	1
Check Fraud	1	1	2
Child Molesting	.	103	27	2	.	28	.	4	1	.	.	165
Conspiracy	.	26	19	1	.	1	5	1	1	2	.	56
Controlled Substance Registration	.	.	.	1	1
Corrupt Business Influence	.	.	.	5	1	.	6
Criminal Confinement	.	.	34	3	1	.	.	11	.	2	.	51
Criminal Deviate Conduct	.	5	3	8
Criminal Recklessness	.	.	.	4	1	4	.	9
Criminal Trespass	1	1
Deal Sub Represented To Be Controlled Sub	1	1
Deal Substance Represented To Be Controlled Substance	1	1
Dealing In Cocaine Or Narcotic Drug	.	292	118	.	.	.	26	2	3	11	.	452
Dealing In Marijuana, Hash, or Hash Oil	.	.	.	1	1	.	2
Dealing In Methamphetamine	.	70	101	.	.	.	17	6	11	15	.	220
Dealing In Schedule IV Controlled Substance	.	.	1	3	4
Dealing Possessing Look-Alike Substance	.	.	.	1	1
Dealing In a Schedule I, II, or III Controlled Substance	.	26	48	1	.	75
Domestic Battery	2	2	4
Escape	5	3	8
Fail To Stop After Accident - Operating Vehicle Intoxicated	.	.	1	1

INDIANA DEPARTMENT OF CORRECTION
ADULT OFFENDERS
by Most Serious Offense
for October 2016
snapshot date: 10/03/2016

Miami Correctional Facility												
Most Serious Offense	Murder	FA	FB	FC	FD	F1	F2	F3	F4	F5	F6	Total
Failure To Register As A Sex Offender	2	.	2
Failure To Return Lawful Detention/Escape	.	.	3	13	1	17
Firearm Within 1 Mile School Property Without License	.	.	.	2	2
Forgery,Counterfeiting,Application Fraud	.	.	.	22	22
Fraud On A Financial Institution	.	.	.	1	2	.	3
Handgun Violation (Felony Within 15 Yrs)	.	.	.	1	17	.	18
Identity Deception	1	1	2
Incest	.	.	2	2
Intimidation	.	.	.	3	1	1	.	5
Kidnapping	.	9	3	1	.	.	.	13
Maintaining Common Nuisance	1	1
Murder	180	180
Neglect Of A Dependent	.	.	8	8
Neglect Of A Dependent Resulting in Serious Injury	5	.	.	.	5
Neglect Of Dependent Resulting In Death	.	7	.	.	.	1	8
Non Support Of Dependent Child	.	.	.	3	3	6
Obliterating Handgun I.D.	.	.	.	1	1
Obstruction Of Justice	1	1
Operate Vehicle After Suspended For Life	.	.	.	7	14	.	21
Operating Vehicle Intoxicated Resulting in Death	.	.	7	1	1	2	.	11
Operating Vehicle Intoxicated Resulting in Serious Bodily Injury	.	.	.	1	1	2
Operating Vehicle While Intoxicated-Previous Conviction	2	2
Operating Vehicle-Habit Traffic Violator	1	2	3
Opererating Vehicle While Intoxicated - Endangering Person	1	1
Possess Chemical Reagents Or Precursors	.	.	.	2	2
Possess Methamphetamine Without Pay Tax	1	1
Possess Of Precursors	1	1
Possession Of A Controlled Substance	.	.	.	6	1	7
Possession Of Cocaine Or Narcotic Drug	.	21	15	4	3	.	.	1	1	2	2	49
Possession Of Dangerous Device	2	.	.	2
Possession Of Marijuana, Hash, Hash Oil	2	2
Possession Of Methamphetamine	.	3	11	1	2	.	.	.	1	1	3	22
Possession Of Syringes Or Needles	1	1	2

INDIANA DEPARTMENT OF CORRECTION
ADULT OFFENDERS
by Most Serious Offense
for October 2016
snapshot date: 10/03/2016

Miami Correctional Facility												
Most Serious Offense	Murder	FA	FB	FC	FD	F1	F2	F3	F4	F5	F6	Total
Prisoner Poss. Dangerous Device/Material	.	.	2	2
Rape	.	14	4	.	.	8	.	2	.	.	.	28
Reckless Homicide	.	.	.	1	1	.	2
Residential Entry	1	1	2
Resisting Law Enforcement	.	.	2	1	1	1	1	6
Robbery	.	48	278	28	.	.	10	61	.	6	.	431
Sexual Misconduct With A Minor	.	1	6	7
Stalking	.	.	2	3	1	.	6
Strangulation	1	1	2
Theft,Receiving Stolen Property	11	7	18
Trafficking With An Inmate	.	.	.	1	2	.	3
Unlawful Firearm Poss By Serious Felon	.	.	100	15	.	.	115
Voluntary Manslaughter	.	78	9	.	.	.	6	93
Total	180	873	1,270	218	43	56	85	130	69	132	32	3,088

INDIANA DEPARTMENT OF CORRECTION
ADULT OFFENDERS
by Most Serious Offense
for October 2016
snapshot date: 10/03/2016

New Castle Correctional Facility												
Most Serious Offense	Murder	FA	FB	FC	FD	F1	F2	F3	F4	F5	F6	Total
Accident Fail To Stop Resulting in Serious Injury or Death	1	.	1
Aggravated Battery	.	.	16	2	.	.	.	18
Aiding Inducing/Causing An Offense	.	1	4	1	1	4	.	11
Arson	.	.	7	7
Attempt To Commit Felony	.	52	33	2	1	.	.	6	3	5	.	102
Auto Theft, Receiving Stolen Auto Parts	.	.	.	4	2	6
Battery	.	2	5	12	1	.	.	1	.	14	1	36
Battery By Bodily Waste	1	1
Burglary	.	25	99	27	.	.	1	1	17	12	.	182
Carjacking	.	.	5	5
Carrying Handgun Without License	.	.	.	1	1
Child Exploitation	.	.	.	12	2	8	.	22
Child Molesting	.	577	411	186	.	2	.	33	59	.	.	1,268
Child Seduction	.	.	.	3	1	3	.	7
Child Solicitation	.	.	.	11	3	.	.	.	5	17	.	36
Conspiracy	.	5	8	3	16
Corrupt Business Influence	.	.	.	1	2	.	3
Criminal Confinement	.	.	17	6	.	.	.	2	.	3	.	28
Criminal Deviate Conduct	.	44	89	133
Criminal Recklessness	.	.	.	2	2	.	4
Dangerous Control Of A Handgun	1	.	1
Dealing In Cocaine Or Narcotic Drug	.	18	31	1	3	22	.	75
Dealing In Marijuana, Hash, or Hash Oil	2	2
Dealing In Methamphetamine	.	3	40	4	14	.	61
Dealing In Sched Iv Controlled Substance	1	.	.	1
Dealing In Sched V Controlled Substance	1	.	1
Dealing In Schedule IV Controlled Substance	.	.	1	1	2
Dealing In a Schedule I, II, or III Controlled Substance	.	5	35	2	.	42
Disarming A Law Enforcement Officer	2	.	2
Distribute Destructive Device To Minor	.	.	1	1
Domestic Battery	2	2
Escape	1	1	2

INDIANA DEPARTMENT OF CORRECTION
ADULT OFFENDERS
by Most Serious Offense
for October 2016
snapshot date: 10/03/2016

New Castle Correctional Facility												
Most Serious Offense	Murder	FA	FB	FC	FD	F1	F2	F3	F4	F5	F6	Total
Fail To Return To Accident Resulting in Serious Injury	1	.	.	.	1
Failure To Register As A Sex Offender	.	.	.	12	2	17	1	32
Failure To Return Lawful Detention/Escape	.	.	.	1	2	3
Firearm Within 1 Mile School Property Without License	.	.	.	2	2
Forgery,Counterfeiting,Application Fraud	.	.	.	13	13
Fraud On A Financial Institution	.	.	.	1	2	.	3
Handgun Violation (Felony Within 15 Yrs)	.	.	.	1	9	.	10
Human Sexual Trafficking	1	1	.	.	2
Incest	.	.	18	16	1	3	.	38
Intimidation	.	.	.	3	3
Invasion Of Privacy	1	1
Kidnapping	.	10	10
Maintaining Common Nuisance	1	1
Murder	89	89
Neglect Of A Dependent	.	.	.	2	1	1	.	4
Neglect Of Dependent Resulting In Death	.	1	1
Non Support Of Dependent Child	.	.	.	4	3	7
Obstruction Of Justice	1	1
Operate Vehicle After Suspended For Life	.	.	.	8	8	.	16
Operating Vehicle Intoxicated Resulting in Death	.	.	4	4
Operating Vehicle Intoxicated Resulting in Serious Bodily Injury	1	.	1
Operating Vehicle While Intoxicated-Previous Conviction	6	1	7
Operating Vehicle-Habit Traffic Violator	3	2	5
Opererating Vehicle While Intoxicated - Endangering Person	1	1
Opererating Vehicle While Intoxicated - Prior Conviction	2	2
Possess Chemical Reagents Or Precursors	.	.	.	1	1
Possess Of Precursors	1	1
Possession Of A Controlled Substance	.	.	.	4	2	6
Possession Of Child Pornography	5	5
Possession Of Cocaine Or Narcotic Drug	.	1	6	.	1	1	1	10
Possession Of Dangerous Device	1	.	.	1
Possession Of Methamphetamine	.	.	2	1	3	1	.	7

INDIANA DEPARTMENT OF CORRECTION
ADULT OFFENDERS
by Most Serious Offense
for October 2016
snapshot date: 10/03/2016

New Castle Correctional Facility												
Most Serious Offense	Murder	FA	FB	FC	FD	F1	F2	F3	F4	F5	F6	Total
Possession Of Syringes Or Needles	.	.	.	1	1
Prisoner Poss. Dangerous Device/Material	.	.	3	3
Promoting Prostitution Under Age 18	.	.	4	4
Public Indecency	2	2
Rape	.	88	120	23	.	.	.	231
Residential Entry	2	1	3
Robbery	.	17	83	8	.	.	.	3	.	9	.	120
Sexual Battery	6	.	.	.	2	.	6	14
Sexual Misconduct Gov Employe W/Detainee	.	.	.	1	1
Sexual Misconduct With A Minor	.	.	227	54	1	.	.	.	36	29	.	347
Strangulation	1	1
Theft,Receiving Stolen Property	.	.	.	1	13	5	19
Trafficking With An Inmate	.	.	.	1	1	.	2
Unlawful Firearm Poss By Serious Felon	.	.	15	2	.	.	17
Vicarious Sexual Gratification	.	.	3	3	1	.	.	7
Voluntary Manslaughter	.	7	3	10
Voyeurism	1	1
Total	89	856	1,290	410	63	2	1	74	137	196	32	3,150

INDIANA DEPARTMENT OF CORRECTION
ADULT OFFENDERS
by Most Serious Offense
for October 2016
snapshot date: 10/03/2016

Pendleton Correctional Facility												
Most Serious Offense	Murder	FA	FB	FC	FD	F1	F2	F3	F4	F5	F6	Total
Aggravated Battery	.	.	18	2	.	.	.	20
Aiding Inducing/Causing An Offense	.	5	5	.	.	1	11
Arson	.	4	3	1	.	.	8
Attempt To Commit Felony	.	80	10	1	.	4	.	.	.	1	.	96
Auto Theft, Receiving Stolen Auto Parts	.	.	.	2	2	3	7
Battery	.	3	3	19	1	.	2	.	.	5	2	35
Battery To A Child Causing Death	.	2	2
Burglary	.	40	86	15	.	3	1	.	6	5	.	156
Carjacking	.	.	6	6
Check Fraud	.	.	.	1	1
Child Molesting	.	209	9	2	.	6	.	1	.	.	.	227
Conspiracy	.	8	4	1	13
Criminal Confinement	.	.	18	1	.	.	.	2	.	3	.	24
Criminal Deviate Conduct	.	35	3	38
Criminal Recklessness	1	1	.	2
Dealing In Cocaine Or Narcotic Drug	.	86	31	.	.	.	1	.	1	3	.	122
Dealing In Methamphetamine	.	10	21	.	.	.	1	1	2	2	.	37
Dealing In a Schedule I, II, or III Controlled Substance	.	5	5	10
Escape	1	1	2
Failure To Register As A Sex Offender	1	.	1
Failure To Return Lawful Detention/Escape	.	.	.	2	2
Firearm Within 1 Mile School Property Without License	.	.	.	1	1
Forgery,Counterfeiting,Application Fraud	.	.	.	11	11
Fraud On A Financial Institution	.	.	.	1	1
Handgun Violation (Felony Within 15 Yrs)	.	.	.	1	4	.	5
Incest	.	.	1	1	.	.	2
Intimidation	.	.	.	2	2
Kidnapping	.	12	12
Murder	512	512
Neglect Of A Dependent	.	.	1	1	2
Neglect Of Dependent Resulting In Death	.	4	4
Non Support Of Dependent Child	.	.	.	1	1

INDIANA DEPARTMENT OF CORRECTION
ADULT OFFENDERS
by Most Serious Offense
for October 2016
snapshot date: 10/03/2016

Pendleton Correctional Facility												
Most Serious Offense	Murder	FA	FB	FC	FD	F1	F2	F3	F4	F5	F6	Total
Obliterating Handgun I.D.	.	.	.	1	1
Operate Vehicle After Suspended For Life	.	.	.	3	7	.	10
Operating Vehicle Intoxicated Resulting in Death	.	.	1	1	.	.	2
Operating Vehicle Intoxicated Resulting in Serious Bodily Injury	1	1
Operating Vehicle While Intoxicated-Previous Conviction	1	1	2
Opererating Vehicle While Intoxicated - Prior Conviction	1	1
Possession Of A Controlled Substance	1	1
Possession Of Cocaine Or Narcotic Drug	.	5	2	.	3	1	11
Possession Of Methamphetamine	.	.	2	.	1	.	.	1	.	2	.	6
Possession Of Syringes Or Needles	1	1
Possession Or Use Of Legend Drug	1	1
Prisoner Poss. Dangerous Device/Material	.	.	1	1
Rape	.	45	8	.	.	3	.	1	.	.	.	57
Reckless Homicide	.	.	.	3	3
Residential Entry	1	1
Resisting Law Enforcement	.	.	1	1	.	2
Robbery	.	33	87	5	.	.	3	8	.	2	.	138
Sexual Misconduct With A Minor	.	.	9	9
Stalking	1	.	.	1
Theft,Receiving Stolen Property	5	4	9
Unlawful Firearm Poss By Serious Felon	.	.	25	2	.	.	27
Voluntary Manslaughter	.	35	5	.	.	.	3	43
Total	512	621	365	74	18	17	11	16	15	38	14	1,701

INDIANA DEPARTMENT OF CORRECTION
ADULT OFFENDERS
by Most Serious Offense
for October 2016
snapshot date: 10/03/2016

Plainfield Correctional Facility												
Most Serious Offense	Murder	FA	FB	FC	FD	F1	F2	F3	F4	F5	F6	Total
Accident Fail To Stop Reulting in Serious Injury or Death	2	.	2
Aggravated Battery	.	.	16	9	.	.	.	25
Aiding Inducing/Causing An Offense	.	2	5	1	2	1	.	11
Aiding in Manufacture of Sch II Controlled Substance	1	1
Animal Fighting Contest	1	1
Arson	.	.	6	2	.	.	8
Assisting A Criminal	.	.	.	2	2
Attempt To Commit Felony	.	20	11	2	.	.	.	2	.	3	.	38
Auto Theft, Receiving Stolen Auto Parts	.	.	.	4	2	7	13
Battery	.	.	4	25	1	.	.	1	1	31	5	68
Battery By Bodily Waste	1	1
Battery To A Child Causing Death	.	1	1
Burglary	.	9	123	37	.	.	4	.	54	32	.	259
Carjacking	.	.	4	4
Carrying Handgun Without License	.	.	.	5	5
Check Fraud	.	.	.	1	1
Child Molesting	.	8	1	3	1	.	.	13
Conspiracy	.	9	13	2	.	.	.	1	2	3	.	30
Corrupt Business Influence	.	.	.	4	1	.	5
Criminal Confinement	.	.	10	6	3	.	.	2	.	4	.	25
Criminal Deviate Conduct	.	.	1	1
Criminal Recklessness	.	.	.	3	1	2	.	6
Deal Sub Represented To Be Controlled Sub	1	1
Deal Substance Represented To Be Controlled Substance	1	1
Dealing In A Schedule V Controlled Substance	.	.	1	1
Dealing In Cocaine Or Narcotic Drug	.	43	103	.	.	.	6	3	16	11	.	182
Dealing In Marijuana, Hash, or Hash Oil	.	.	.	1	1	1	1	4
Dealing In Methamphetamine	.	2	66	4	12	16	.	100
Dealing In Schedule IV Controlled Substance	.	.	3	2	.	5
Dealing Possessing Look-Alike Substance	1	.	1
Dealng A Sched I, Ii, Iii Control Subst	1	1	2	.	.	4
Dealng In a Schedule I, II, or III Controlled Substance	.	4	54	58
Domestic Battery	2	1	3

INDIANA DEPARTMENT OF CORRECTION
ADULT OFFENDERS
by Most Serious Offense
for October 2016
snapshot date: 10/03/2016

Plainfield Correctional Facility												
Most Serious Offense	Murder	FA	FB	FC	FD	F1	F2	F3	F4	F5	F6	Total
Driving While Intoxicated	1	1
Escape	5	4	9
Fail To Stop After Accident - Operating Vehicle Intoxicated	.	.	1	1
Failure To Register As A Sex Offender	.	.	.	8	3	14	.	25
Failure To Return Lawful Detention/Escape	.	.	.	3	2	5
Firearm Within 1 Mile School Property Without License	.	.	.	1	1
Forgery,Counterfeiting,Application Fraud	.	.	.	18	1	2	21
Fraud	1	1
Fraud On A Financial Institution	.	.	.	4	6	.	10
Handgun Violation (Felony Within 15 Yrs)	.	.	.	1	20	.	21
Home Improvement Fraud Offenses	2	2
Impersonating A Public Servant	1	1
Intimidation	.	.	.	4	3	6	1	14
Kidnapping	.	2	1	.	.	.	3
Maintaining Common Nuisance	1	1
Murder	38	38
Neglect Of A Dependent	.	.	1	1	1	2	1	6
Neglect Of A Dependent Resulting in Serious Injury	3	.	.	.	3
Non Support Of Dependent Child	.	.	.	15	1	1	.	17
Obliterating Handgun I.D.	.	.	.	1	1
Operate Vehicle After Suspended For Life	.	.	.	21	21	.	42
Operating Vehicle Intoxicated Resulting in Death	.	.	4	2	.	.	6
Operating Vehicle Intoxicated Resulting in Serious Bodily Injury	2	1	3
Operating Vehicle While Intoxicated-Previous Conviction	3	4	7
Operating Vehicle With Schedule I in Body - Causing Death	.	.	.	1	1
Operating Vehicle-Habit Traffic Violator	.	.	.	1	1	1	3
Opererating Vehicle - Schedule I Or II Control Substance	1	1
Opererating Vehicle While Intoxicated - Endangering Person	1	1
Opererating Vehicle While Intoxicated - Prior Conviction	1	1
Possess Chemical Reagents Or Precursors	.	.	.	2	1	.	3
Possess Of Precursors	1	1	2
Possession Of A Controlled Substance	.	.	.	2	4	6
Possession Of Cocaine Or Narcotic Drug	.	3	18	7	3	.	.	.	1	5	6	43

INDIANA DEPARTMENT OF CORRECTION
ADULT OFFENDERS
by Most Serious Offense
for October 2016
snapshot date: 10/03/2016

Plainfield Correctional Facility												
Most Serious Offense	Murder	FA	FB	FC	FD	F1	F2	F3	F4	F5	F6	Total
Possession Of Dangerous Device	1	.	1
Possession Of Marijuana, Hash, Hash Oil	4	4
Possession Of Methamphetamine	.	.	2	5	2	.	.	5	5	5	2	26
Possession Of Syringes Or Needles	1	1	2
Prisoner Poss. Dangerous Device/Material	.	.	.	1	1
Rape	.	2	1	3
Reckless Homicide	.	.	.	2	2	.	4
Resisting Law Enforcement	.	.	.	1	4	4	9
Robbery	.	5	75	20	.	.	.	31	.	16	.	147
Sale Of Unregistered Security	.	.	.	1	1
Sexual Misconduct With A Minor	.	.	.	1	1
Stalking	.	.	.	3	1	2	.	6
Strangulation	2	3	5
Theft,Receiving Stolen Property	17	1	17	35
Trafficking With An Inmate	.	.	.	1	1	.	2
Unlawful Firearm Poss By Serious Felon	.	.	33	12	.	.	45
Voluntary Manslaughter	.	9	3	12
Total	38	119	559	221	72	.	11	63	113	221	67	1,484

INDIANA DEPARTMENT OF CORRECTION
ADULT OFFENDERS
by Most Serious Offense
for October 2016
snapshot date: 10/03/2016

Putnamville Correctional Facility												
Most Serious Offense	Murder	FA	FB	FC	FD	F1	F2	F3	F4	F5	F6	Total
Accident Fail To Stop Reulting in Serious Injury or Death	.	.	1	1	.	2
Aggravated Battery	.	.	21	12	.	.	.	33
Aiding Inducing/Causing An Offense	.	1	5	1	.	.	7
Arson	.	.	10	6	.	.	16
Assisting A Criminal	.	.	.	1	1
Assisting Suicide	.	.	.	1	1
Attempt To Commit Felony	.	23	11	3	1	.	1	1	.	6	2	48
Auto Theft, Receiving Stolen Auto Parts	.	.	.	7	6	1	10	24
Battery	.	.	4	29	2	.	.	4	.	59	4	102
Battery By Bodily Waste	.	.	.	1	1	2
Bribery	1	.	1
Burglary	.	13	189	56	.	.	4	4	68	38	.	372
Carjacking	.	.	8	8
Carrying Handgun Without License	.	.	.	6	6
Check Fraud	.	.	.	3	3
Child Molesting	.	1	4	5	10
Conspiracy	.	6	15	2	.	.	1	.	.	1	.	25
Controlled Substance Registration	1	1
Conversion	2	.	2
Corrupt Business Influence	.	.	.	1	5	.	6
Criminal Confinement	.	.	24	8	1	.	.	7	.	8	.	48
Criminal Recklessness	.	.	.	1	8	.	9
Deal Sub Represented To Be Controlled Sub	1	1
Dealing In Cocaine Or Narcotic Drug	.	44	148	.	.	.	12	11	15	9	.	239
Dealing In Marijuana, Hash, or Hash Oil	.	.	.	2	1	2	1	6
Dealing In Methamphetamine	.	5	99	.	.	.	10	16	12	11	.	153
Dealing In Schedule IV Controlled Substance	.	.	2	3	5
Dealing Possessing Look-Alike Substance	.	.	.	1	2	.	3
Dealng A Sched I, Ii, Iii Control Subst	1	1	.	.	.	2
Dealng In a Schedule I, II, or III Controlled Substance	.	5	31	36
Domestic Battery	2	2	4
Escape	1	6	6	13
Fail To Return To Accident Resulting in Serious Injury	1	.	.	.	1

INDIANA DEPARTMENT OF CORRECTION
ADULT OFFENDERS
by Most Serious Offense
for October 2016
snapshot date: 10/03/2016

Putnamville Correctional Facility												
Most Serious Offense	Murder	FA	FB	FC	FD	F1	F2	F3	F4	F5	F6	Total
Failure To Register As A Sex Offender	.	.	.	8	1	25	1	35
Failure To Return Lawful Detention/Escape	.	.	.	3	1	4
Firearm Within 1 Mile School Property Without License	.	.	.	11	11
Forgery,Counterfeiting,Application Fraud	.	.	.	38	2	40
Fraud	1	1	2
Fraud On A Financial Institution	.	.	.	2	7	.	9
Handgun Violation	.	.	.	1	1
Handgun Violation (Felony Within 15 Yrs)	.	.	.	2	18	.	20
Intimidation	.	.	.	4	1	6	1	12
Invasion Of Privacy	1	1
Involuntary Manslaughter	.	.	.	1	1
Kidnapping	.	4	4
Maintaining Common Nuisance	5	3	8
Murder	29	29
Neglect Of A Dependent	.	.	3	1	1	1	6
Neglect Of A Dependent Resulting in Serious Injury	2	.	.	.	2
Neglect Of Dependent Resulting In Death	.	1	1
Non Support Of Dependent Child	.	.	.	4	4	8
Obliterating Handgun I.D.	1	.	1
Obstruction Of Justice	1	1
Operate Vehicle After Suspended For Life	.	.	.	22	29	.	51
Operating Vehicle Intoxicated Resulting in Death	.	.	4	2	2	4	.	12
Operating Vehicle Intoxicated Resulting in Serious Bodily Injury	.	.	.	2	2	1	5
Operating Vehicle While Intoxicated-Previous Conviction	3	3
Operating Vehicle-Habit Traffic Violator	3	1	4
Opererating Vehicle While Intoxicated - Endangering Person	2	2
Opererating Vehicle While Intoxicated - Prior Conviction	5	5
Possess Chemical Reagents Or Precursors	.	.	.	3	1	.	4
Possess Of Precursors	1	1
Possession Of A Controlled Substance	.	.	.	3	5	1	9
Possession Of Cocaine Or Narcotic Drug	.	2	9	6	2	.	.	4	5	3	3	34
Possession Of Dangerous Device	1	.	.	1
Possession Of Marijuana, Hash, Hash Oil	4	4

INDIANA DEPARTMENT OF CORRECTION
ADULT OFFENDERS
by Most Serious Offense
for October 2016
snapshot date: 10/03/2016

Putnamville Correctional Facility												
Most Serious Offense	Murder	FA	FB	FC	FD	F1	F2	F3	F4	F5	F6	Total
Possession Of Methamphetamine	.	.	8	4	3	.	.	3	2	5	4	29
Possession Of Paraphernalia	1	1
Possession Of Syringes Or Needles	.	.	.	1	3	1	.	5
Possession Or Use Of Legend Drug	.	.	.	1	1
Prisoner Poss. Dangerous Device/Material	.	.	.	1	1
Rape	.	1	3	4
Reckless Homicide	.	.	.	2	1	.	3
Residential Entry	5	5
Resisting Law Enforcement	1	.	.	1	.	.	4	6
Robbery	.	4	120	20	.	.	4	73	.	27	.	248
Sale Of Unregistered Security	.	.	.	1	1
Sexual Misconduct With A Minor	.	.	1	2	.	.	3
Stalking	.	.	.	3	2	3	.	8
Strangulation	5	2	7
Theft,Receiving Stolen Property	20	1	20	41
Trafficking With An Inmate	.	.	.	2	2
Unlawful Firearm Poss By Serious Felon	.	.	79	29	.	.	108
Voluntary Manslaughter	.	17	3	.	.	.	4	24
Total	29	127	802	278	81	.	37	140	146	295	83	2,018

INDIANA DEPARTMENT OF CORRECTION
ADULT OFFENDERS
by Most Serious Offense
for October 2016
snapshot date: 10/03/2016

Reception Diagnostic Center												
Most Serious Offense	Murder	FA	FB	FC	FD	F1	F2	F3	F4	F5	F6	Total
Aggravated Battery	.	.	3	7	.	.	.	10
Aiding Inducing/Causing An Offense	.	.	1	1	.	.	.	1	1	5	.	9
Arson	.	1	1	2	.	.	4
Assisting A Criminal	1	.	1
Attempt To Commit Felony	.	.	2	1	.	.	1	3	1	1	.	9
Auto Theft, Receiving Stolen Auto Parts	2	2
Battery	.	.	.	7	1	12	1	21
Burglary	.	.	15	16	.	.	.	2	16	18	.	67
Check Fraud	1	1
Child Molesting	.	1	3	5	.	2	.	3	8	.	.	22
Child Solicitation	1	1	.	2
Conspiracy	.	.	1	1
Corrupt Business Influence	3	.	3
Criminal Confinement	.	.	1	.	1	2	.	4
Criminal Deviate Conduct	.	.	2	2
Criminal Recklessness	1	.	1
Dealing In Cocaine Or Narcotic Drug	.	3	8	.	.	.	5	3	1	7	.	27
Dealing In Marijuana, Hash, or Hash Oil	1	.	1
Dealing In Methamphetamine	.	1	6	.	.	.	2	2	3	15	.	29
Dealing In Sched Iv Controlled Substance	1	.	.	.	1
Dealng A Sched I, Ii, Iii Control Subst	1	1	1	.	.	3
Dealing In a Schedule I, II, or III Controlled Substance	.	.	6	6
Disarming A Law Enforcement Officer	2	.	2
Domestic Battery	2	2	4
Escape	3	1	4
Failure To Register As A Sex Offender	.	.	.	1	2	.	3
Failure To Return Lawful Detention/Escape	.	.	.	1	1
Firearm Within 1 Mile School Property Without License	.	.	.	1	1
Forgery,Counterfeiting,Application Fraud	.	.	.	6	1	7
Fraud On A Financial Institution	2	.	2
Handgun Violation (Felony Within 15 Yrs)	6	.	6
Human Sexual Trafficking	1	.	.	.	1
Illegal Possession Of Firearm By Felon	.	.	.	1	1

INDIANA DEPARTMENT OF CORRECTION
ADULT OFFENDERS
by Most Serious Offense
for October 2016
snapshot date: 10/03/2016

Reception Diagnostic Center												
Most Serious Offense	Murder	FA	FB	FC	FD	F1	F2	F3	F4	F5	F6	Total
Intimidation	5	.	5
Maintaining Common Nuisance	2	2
Murder	1	1
Neglect Of A Dependent Resulting in Serious Injury	1	.	.	.	1
Non Support Of Dependent Child	.	.	.	7	1	8
Operate Vehicle After Suspended For Life	.	.	.	2	7	.	9
Operating Vehicle Intoxicated Resulting in Death	3	1	.	4
Operating Vehicle While Intoxicated-Previous Conviction	6	1	7
Operating Vehicle-Habit Traffic Violator	6	6
Opererating Vehicle While Intoxicated - Endangering Person	1	1
Opererating Vehicle While Intoxicated - Prior Conviction	2	2
Possession Of A Controlled Substance	1	1
Possession Of Cocaine Or Narcotic Drug	.	.	2	3	1	1	2	9
Possession Of Marijuana, Hash, Hash Oil	1	1
Possession Of Methamphetamine	2	.	.	2	2	3	1	10
Possession Of Paraphernalia	1	1
Possession Of Syringes Or Needles	2	2
Possession Or Use Of Legend Drug	1	1
Promoting Prostitution	.	.	.	1	1
Rape	.	.	4	4
Resisting Law Enforcement	1	.	2	.	3
Robbery	.	2	7	8	.	.	1	7	.	7	.	32
Sexual Battery	1	.	.	.	1	.	.	2
Sexual Misconduct With A Minor	.	.	7	1	2	.	.	10
Stalking	1	2	.	3
Strangulation	1	1
Theft,Receiving Stolen Property	10	1	7	18
Unlawful Firearm Poss By Serious Felon	.	.	3	5	.	.	8
Voluntary Manslaughter	1	1
Voyeurism	1	1
Total	1	8	72	62	39	2	11	35	47	111	25	413

INDIANA DEPARTMENT OF CORRECTION
ADULT OFFENDERS
by Most Serious Offense
for October 2016
snapshot date: 10/03/2016

Rockville Correctional Facility												
Most Serious Offense	Murder	FA	FB	FC	FD	F1	F2	F3	F4	F5	F6	Total
Accident Fail To Stop Reulting in Serious Injury or Death	.	.	.	1	1
Aggravated Battery	.	.	7	3	.	.	.	10
Aiding Inducing/Causing An Offense	.	4	4	1	1	3	.	13
Arson	.	1	2	1	2	.	.	6
Assisting A Criminal	.	.	.	1	1
Attempt To Commit Felony	.	10	3	.	.	1	2	.	.	3	.	19
Auto Theft, Receiving Stolen Auto Parts	2	1	3
Battery	.	1	.	10	.	.	.	3	.	18	4	36
Battery By Bodily Waste	.	.	.	1	1	2
Burglary	.	3	50	8	.	1	1	1	19	9	.	92
Carjacking	.	.	2	2
Check Fraud	.	.	.	2	2
Child Molesting	.	25	12	2	.	1	40
Child Solicitation	1	.	1
Conspiracy	.	10	8	1	.	.	.	4	2	2	.	27
Controlled Substance Registration	.	.	.	1	2	3
Corrupt Business Influence	.	.	.	4	1	.	5
Criminal Confinement	.	.	2	3	.	.	.	5
Criminal Deviate Conduct	.	4	1	5
Criminal Recklessness	1	1
Dangerous Control Of A Handgun	1	.	1
Dealing In A Schedule V Controlled Substance	.	.	1	1
Dealing In Cocaine Or Narcotic Drug	.	27	41	.	.	.	6	5	9	21	.	109
Dealing In Marijuana, Hash, or Hash Oil	1	1
Dealing In Methamphetamine	.	21	57	.	.	.	8	7	12	24	.	129
Dealing In Schedule IV Controlled Substance	.	.	2	4	3	.	9
Dealng A Sched I, Ii, Iii Control Subst	2	.	4	.	.	6
Dealing In a Schedule I, II, or III Controlled Substance	.	13	50	63
Domestic Battery	2	1	3
Escape	4	6	10
Fail To Return To Accident Resulting in Serious Injury	1	.	.	.	1
Fail To Stop At An Accident/Sbi/Prior	1	1

INDIANA DEPARTMENT OF CORRECTION
ADULT OFFENDERS
by Most Serious Offense
for October 2016
snapshot date: 10/03/2016

Rockville Correctional Facility												
Most Serious Offense	Murder	FA	FB	FC	FD	F1	F2	F3	F4	F5	F6	Total
Failure To Register As A Sex Offender	.	.	.	2	1	1	4
Failure To Return Lawful Detention/Escape	.	.	.	3	3	6
Forgery,Counterfeiting,Application Fraud	.	.	.	35	1	1	37
Fraud	1	1
Fraud On A Financial Institution	.	.	.	1	4	.	5
Handgun Violation (Felony Within 15 Yrs)	2	.	2
Human Sexual Trafficking	.	.	1	1
Incest	.	.	1	1
Intimidation	2	1	3
Kidnapping	1	.	1	.	2
Maintaining Common Nuisance	4	2	6
Murder	50	50
Neglect Of A Dependent	.	.	12	2	3	17
Neglect Of A Dependent Resulting in Serious Injury	8	.	.	.	8
Neglect Of Dependent Resulting In Death	.	14	.	.	.	1	15
Non Support Of Dependent Child	.	.	.	1	1
Operate Vehicle After Suspended For Life	.	.	.	2	6	.	8
Operating Vehicle Intoxicated Resulting in Death	.	.	5	5	.	.	10
Operating Vehicle Intoxicated Resulting in Serious Bodily Injury	.	.	.	1	1	.	2
Operating Vehicle While Intoxicated-Previous Conviction	5	1	1	7
Operating Vehicle-Habit Traffic Violator	3	1	4
Opererating Vehicle - Schedule I Or II Control Substance	1	1
Opererating Vehicle While Intoxicated - Endangering Person	1	1
Possess Chemical Reagents Or Precursors	1	.	1
Possess Of Precursors	2	5	7
Possession Of A Controlled Substance	7	7
Possession Of Cocaine Or Narcotic Drug	.	1	5	4	2	.	.	2	2	5	3	24
Possession Of Marijuana, Hash, Hash Oil	1	1
Possession Of Methamphetamine	.	1	4	1	5	.	.	3	.	5	2	21
Possession Of Paraphernalia	1	1
Possession Of Syringes Or Needles	2	2	.	4
Possession Or Use Of Legend Drug	1	1

INDIANA DEPARTMENT OF CORRECTION
ADULT OFFENDERS
by Most Serious Offense
for October 2016
snapshot date: 10/03/2016

Rockville Correctional Facility												
Most Serious Offense	Murder	FA	FB	FC	FD	F1	F2	F3	F4	F5	F6	Total
Promoting Prostitution	.	.	.	1	1
Promoting Prostitution Under Age 18	.	.	1	1
Prostitution	1	1
Rape	1	.	.	.	1
Reckless Homicide	.	.	.	2	1	.	3
Residential Entry	1	2	3
Resisting Law Enforcement	1	1
Robbery	.	5	18	4	.	.	1	15	.	8	.	51
Sexual Misconduct With A Minor	.	.	9	.	1	.	.	.	1	1	.	12
Strangulation	1	1
Theft,Receiving Stolen Property	.	.	.	1	19	22	42
Trafficking With An Inmate	.	.	.	2	1	.	3
Unlawful Firearm Poss By Serious Felon	.	.	3	3
Voluntary Manslaughter	.	14	3	.	.	.	1	18
Welfare Fraud	.	.	.	3	3
Total	50	154	304	101	74	4	21	58	57	132	56	1,011

INDIANA DEPARTMENT OF CORRECTION
ADULT OFFENDERS
by Most Serious Offense
for October 2016
snapshot date: 10/03/2016

South Bend Community Re-Entry Center												
Most Serious Offense	Murder	FA	FB	FC	FD	F1	F2	F3	F4	F5	F6	Total
Aggravated Battery	.	.	2	2
Aiding Inducing/Causing An Offense	.	.	1	1
Attempt To Commit Felony	.	2	3	5
Battery	.	.	.	1	1	.	2
Burglary	.	2	12	3	1	.	.	18
Carrying Handgun Without License	.	.	.	1	1
Conspiracy	.	.	2	2
Criminal Confinement	.	.	1	1
Dealing In Cocaine Or Narcotic Drug	.	3	12	15
Dealing In Marijuana, Hash, or Hash Oil	.	.	.	2	2
Dealing In Methamphetamine	.	1	18	1	2	.	22
Dealing Possessing Look-Alike Substance	1	.	1
Dealing In a Schedule I, II, or III Controlled Substance	.	1	8	1	.	10
Firearm Within 1 Mile School Property Without License	.	.	.	1	1
Forgery,Counterfeiting,Application Fraud	.	.	.	6	6
Fraud	1	1
Intimidation	.	.	.	1	1	1	.	3
Invasion Of Privacy	1	1
Murder	2	2
Neglect Of A Dependent	.	.	.	1	1
Non Support Of Dependent Child	.	.	.	1	1
Operate Vehicle After Suspended For Life	.	.	.	2	3	.	5
Operating Vehicle Intoxicated Resulting in Death	.	.	2	2
Operating Vehicle Intoxicated Resulting in Serious Bodily Injury	1	1
Operating Vehicle While Intoxicated-Previous Conviction	3	1	4
Operating Vehicle-Habit Traffic Violator	1	1
Opererating Vehicle While Intoxicated - Endangering Person	2	2
Opererating Vehicle While Intoxicated - Prior Conviction	1	1
Possession Of A Controlled Substance	.	.	.	1	1
Possession Of Cocaine Or Narcotic Drug	.	4	1	.	1	6
Possession Of Methamphetamine	.	.	1	1
Residential Entry	1	1
Resisting Law Enforcement	.	.	.	1	1
Robbery	.	1	5	2	.	.	.	1	.	.	.	9
Theft,Receiving Stolen Property	1	1
Unlawful Firearm Poss By Serious Felon	.	.	3	1	.	.	4
Voluntary Manslaughter	.	4	4
Total	2	18	71	23	10	.	.	1	3	9	5	142

INDIANA DEPARTMENT OF CORRECTION
ADULT OFFENDERS
by Most Serious Offense
for October 2016
snapshot date: 10/03/2016

Wabash Valley Correctional Facility													
Most Serious Offense	Murder	FA	FB	FC	FD	F1	F2	F3	F4	F5	F6	HO	Total
Aggravated Battery	.	.	16	.	.	1	.	5	22
Aiding Inducing/Causing An Offense	.	12	3	.	.	1	.	.	.	1	.	.	17
Arson	.	2	4	1	.	.	.	7
Assisting A Criminal	1	.	1
Attempt To Commit Felony	.	101	15	1	.	6	.	.	.	1	.	.	124
Auto Theft, Receiving Stolen Auto Parts	.	.	.	2	2	.	4
Battery	.	4	2	12	1	10	1	.	30
Burglary	.	42	82	17	.	3	1	.	17	12	.	.	174
Carjacking	.	.	9	9
Carrying Handgun Without License	.	.	.	1	1
Check Fraud	1	1
Child Molesting	.	249	18	6	.	13	286
Conspiracy	.	8	8	1	.	1	2	20
Criminal Confinement	.	.	17	2	19
Criminal Deviate Conduct	.	24	2	26
Criminal Recklessness	.	.	.	4	1	1	.	.	6
Dealing In Cocaine Or Narcotic Drug	.	65	35	2	.	1	.	.	103
Dealing In Marijuana, Hash, or Hash Oil	.	.	.	2	2
Dealing In Methamphetamine	.	23	39	.	.	.	2	2	2	9	.	.	77
Dealing In Schedule IV Controlled Substance	.	.	1	1
Dealng A Sched I, Ii, Iii Control Subst	1	1
Dealng In a Schedule I, II, or III Controlled Substance	.	6	11	1	.	.	18
Disarming A Law Enforcement Officer	.	.	.	1	1
Escape	1	.	1
Failure To Register As A Sex Offender	3	.	.	3
Failure To Return Lawful Detention/Escape	.	.	2	2	4
Firearm Within 1 Mile School Property Without License	.	.	.	1	1
Forgery,Counterfeiting,Application Fraud	.	.	.	4	4
Habitual Offender Substance Abuse	1	1
Handgun Violation (Felony Within 15 Yrs)	.	.	.	1	5	.	.	6
Home Improvement Fraud Enhancement	.	.	.	1	1
Intimidation	2	.	.	2
Kidnapping	.	22	22
Maintaining Common Nuisance	1	.	1

INDIANA DEPARTMENT OF CORRECTION
ADULT OFFENDERS
by Most Serious Offense
for October 2016
snapshot date: 10/03/2016

Wabash Valley Correctional Facility													
Most Serious Offense	Murder	FA	FB	FC	FD	F1	F2	F3	F4	F5	F6	HO	Total
Murder	582	582
Neglect Of A Dependent Resulting in Serious Injury	2	2
Neglect Of Dependent Resulting In Death	.	12	12
Non Support Of Dependent Child	.	.	.	1	1	.	.	2
Operate Vehicle After Suspended For Life	.	.	.	5	7	.	.	12
Operating Vehicle Intoxicated Resulting in Death	.	.	5	1	1	.	.	.	7
Operating Vehicle While Intoxicated-Previous Conviction	2	1	.	3
Operating Vehicle-Habit Traffic Violator	1	.	1
Opererating Vehicle While Intoxicated - Prior Conviction	1	.	1
Possess Chemical Reagents Or Precursors	.	.	.	1	1
Possess Of Precursors	1	1
Possession Of Cocaine Or Narcotic Drug	.	3	3	.	1	1	.	.	8
Possession Of Marijuana, Hash, Hash Oil	2	2
Possession Of Methamphetamine	.	1	4	.	2	3	1	.	11
Possession Of Paraphernalia	1	1
Prisoner Poss. Dangerous Device/Material	.	.	2	2
Rape	.	52	8	.	.	8	.	1	69
Reckless Homicide	.	.	.	1	1
Removing, Damaging, Or Altering a VIN	.	.	.	1	1
Resisting Law Enforcement	.	.	1	.	1	2
Robbery	.	47	103	6	.	.	1	7	.	2	.	.	166
Sexual Misconduct With A Minor	.	1	8	9
Stalking	1	.	.	1
Strangulation	1	.	1
Theft,Receiving Stolen Property	.	.	.	2	5	1	.	8
Unlawful Firearm Poss By Serious Felon	.	.	20	4	.	.	.	24
Voluntary Manslaughter	.	36	2	.	.	.	1	39
Total	582	710	420	76	18	33	8	19	25	61	12	1	1,965

INDIANA DEPARTMENT OF CORRECTION
ADULT OFFENDERS
by Most Serious Offense
for October 2016
snapshot date: 10/03/2016

Westville Correctional Facility													
Most Serious Offense	Murder	FA	FB	FC	FD	F1	F2	F3	F4	F5	F6	HO	Total
Accident Fail To Stop Reulting in Serious Injury or Death	3	.	.	3
Aggravated Battery	.	.	35	10	45
Aiding Inducing/Causing An Offense	.	1	15	3	1	.	.	10	7	9	.	.	46
Arson	.	1	12	4	.	.	.	17
Assisting A Criminal	.	.	.	1	1
Attempt To Commit Felony	.	19	17	8	.	.	1	1	2	8	1	.	57
Auto Theft, Receiving Stolen Auto Parts	.	.	.	3	4	10	.	17
Battery	.	.	7	36	2	.	.	4	.	75	4	.	128
Battery By Bodily Waste	.	.	.	1	2	3
Battery To A Child Causing Death	.	1	1
Burglary	.	9	209	77	.	.	4	1	90	70	.	.	460
Carjacking	.	.	3	3
Carrying Handgun Without License	.	.	.	9	9
Child Molesting	.	2	1	2	5
Conspiracy	.	6	13	2	1	.	2	2	3	4	.	.	33
Controlled Substance Registration	.	.	.	1	1	2
Conversion	1	.	1
Corrupt Business Influence	.	.	.	9	8	.	.	17
Criminal Confinement	.	.	15	9	1	.	1	4	.	10	2	.	42
Criminal Deviate Conduct	.	2	1	3
Criminal Recklessness	.	.	.	2	3	4	2	.	11
Dealing In Cocaine Or Narcotic Drug	.	68	202	1	.	.	5	18	28	46	.	.	368
Dealing In Marijuana, Hash, or Hash Oil	.	.	.	2	2	.	.	4
Dealing In Methamphetamine	.	18	130	.	.	.	4	11	45	75	.	.	283
Dealing In Schedule IV Controlled Substance	.	.	2	4	6
Dealing Possessing Look-Alike Substance	.	.	.	4	2	1	.	7
Dealng A Sched I, Ii, Iii Control Subst	2	.	.	.	2
Dealng In a Schedule I, II, or III Controlled Substance	.	9	81	3	.	.	93
Disarming A Law Enforcement Officer	.	.	.	2	2	.	.	4
Domestic Battery	6	7	.	13
Escape	10	14	.	24
Fail To Return To Accident Resulting in Serious Injury	2	2
Fail To Stop After Accident - Operating Vehicle Intoxicated	.	.	3	3
Failure Of Sex Offender To Possess Id	1	1
Failure To Register As A Sex Offender	.	.	.	14	23	3	.	40

INDIANA DEPARTMENT OF CORRECTION
ADULT OFFENDERS
by Most Serious Offense
for October 2016
snapshot date: 10/03/2016

Westville Correctional Facility													
Most Serious Offense	Murder	FA	FB	FC	FD	F1	F2	F3	F4	F5	F6	HO	Total
Failure To Return Lawful Detention/Escape	.	.	3	7	3	13
Firearm Within 1 Mile School Property Without License	.	.	.	7	7
Forgery,Counterfeiting,Application Fraud	.	.	.	37	2	2	.	41
Fraud	2	2	.	4
Fraud On A Financial Institution	.	.	.	10	10	.	.	20
Habitual Offender	1	1
Handgun Violation (Felony Within 15 Yrs)	.	.	.	8	39	.	.	47
Home Improvement Fraud Enhancement	.	.	.	1	1
Home Improvement Fraud Offenses	1	1
Identity Deception	1	1
Intimidation	.	.	.	5	7	16	4	.	32
Invasion Of Privacy	1	2	.	3
Involuntary Manslaughter	.	.	.	2	2
Kidnapping	.	1	1	2
Maintaining Common Nuisance	1	1
Mischief	.	.	.	1	1
Murder	49	49
Neglect Of A Dependent	.	.	7	1	1	3	1	.	13
Neglect Of A Dependent Resulting in Serious Injury	6	6
Non Support Of Dependent Child	.	.	.	15	3	18
Obliterating Handgun I.D.	1	.	.	1
Obstruction Of Justice	1	1	.	2
Operate Vehicle After Suspended For Life	.	.	.	27	54	.	.	81
Operating Vehicle Intoxicated Resulting in Death	.	.	3	3	5	5	.	.	16
Operating Vehicle Intoxicated Resulting in Serious Bodily Injury	.	.	.	1	1	.	.	2
Operating Vehicle While Intoxicated-Previous Conviction	16	11	.	27
Operating Vehicle-Habit Traffic Violator	.	.	.	1	5	4	.	10
Opererating Vehicle While Intoxicated - Prior Conviction	5	.	5
Pointing A Firearm	1	1
Possess Chemical Reagents Or Precursors	.	.	.	1	3	.	.	4
Possess Of Precursors	4	2	.	6
Possession Of A Controlled Substance	.	.	.	10	8	18
Possession Of Cocaine Or Narcotic Drug	.	9	17	12	4	.	.	2	6	10	13	.	73
Possession Of Marijuana, Hash, Hash Oil	9	1	.	10
Possession Of Methamphetamine	.	1	14	5	8	13	12	.	53

INDIANA DEPARTMENT OF CORRECTION
ADULT OFFENDERS
by Most Serious Offense
for October 2016
snapshot date: 10/03/2016

Westville Correctional Facility													
Most Serious Offense	Murder	FA	FB	FC	FD	F1	F2	F3	F4	F5	F6	HO	Total
Possession Of Paraphernalia	1	1
Possession Of Syringes Or Needles	2	5	.	7
Possession Or Use Of Legend Drug	1	.	1
Prisoner Poss. Dangerous Device/Material	.	.	.	1	1
Rape	.	5	1	6
Reckless Homicide	.	.	.	4	5	.	.	9
Residential Entry	5	.	5
Resisting Law Enforcement	7	1	8	.	16
Robbery	.	18	142	26	.	.	3	64	.	30	.	.	283
Security Fraud	.	.	.	1	1
Sexual Misconduct With A Minor	.	.	1	1	2
Stalking	.	.	1	1	3	.	.	5
Strangulation	4	1	.	5
Theft,Receiving Stolen Property	.	.	.	1	38	30	.	69
Trafficking With An Inmate	.	.	.	1	4	.	.	5
Unlawful Firearm Poss By Serious Felon	.	.	48	25	.	.	.	73
Voluntary Manslaughter	.	24	8	32
Welfare Fraud	1	1
Total	49	194	991	380	153	.	20	136	217	552	155	1	2,848