

Indiana Department of Correction
July 2019

Offender Population Report

Prepared for the Justice Reinvestment Advisory Council
and State Budget Committee

Robert Carter, Commissioner



TABLE OF CONTENTS

DOC Monthly Admissions - Adult Offenders	1
Current Adult Offenders, by County of Commit	4
Population Trend Graphs	6
DOC Adult Offenders – Facility Breakdowns, by highest Felony Classification	8
DOC Adult Offenders – Most Serious Offense, Alphabetical by highest Felony Classification	10
DOC Adult Offenders – Most Serious Offense, Ranked by highest Felony Classification	14
Appendix – DOC Facilities – Felony Breakdowns	18



INDIANA DEPARTMENT OF CORRECTION

June 2019 Admissions

by Most Serious Offense

Most Serious Offense	F1	F2	F3	F4	F5	F6	FA	FB	FC	FD	Murder	N
Accident - Fail To Stop - Death	1	1
Aggravated Battery	.	.	7	3	.	.	.	1
Aiding Inducing/Causing An Offense	1	.	.	2	.	.	.	6
Arson	.	.	.	3	.	.	.	1	.	.	.	6
Attempt To Commit Felony	1	.	1	.	1	.	1	2	.	.	.	4
Auto Theft, Receiving Stolen Auto Parts	1	.	.	.	1	.	5
Battery	.	.	1	1	32	1	.	1	4	.	.	15
Burglary	.	4	.	27	34	.	.	36	5	.	.	6
Check Fraud	1	.	54
Child Exploitation	2	.	.	.	2	.	.	135
Child Molesting	9	.	2	9	.	.	7	10	5	.	.	1
Child Seduction	1	7
Child Solicitation	.	.	.	1	1	35
Conspiracy	.	2	1	1	1	.	.	3	.	.	.	2
Corrupt Business Influence	5	7
Criminal Confinement	8	.	.	2	2	1	.	1
Criminal Deviate Conduct	1	5	.	.	.	2
Criminal Recklessness	2	8
Dealing In Cocaine Or Narcotic Drug	.	9	12	7	11	.	4	15	.	.	.	1
Dealing In Marijuana, Hash, or Hash Oil	1	1	8
Dealing In Methamphetamine	.	18	11	16	23	.	.	12	.	.	.	1
Dealing In Schedule IV Controlled Substance	1	.	.	.	1	.	.	73
Dealing In Schedule IV Controlled Substance	.	.	1	112
Dealing In a Schedule I, II, or III Controlled Substance	.	.	1	1	2	.	2	9	.	.	.	1
Dealing Possessing Look-Alike Substance	1	2
Domestic Battery	7	18
Domestic Battery With Previous Battery Conviction	13	7
Escape	3	6	1
Fail To Stop At An Accident/Sbi/Prior	1	.	2
Failure To Register As A Sex Offender	5	1	.	.	1	.	.	12
Forgery,Counterfeiting,Application Fraud	2	.	.	7	.	.	1
Fraud	1	.	.	.	1	.	20
Fraud On A Financial Institution	6	.	.	.	1	.	.	1
Handgun Violation (Felony Within 15 Yrs)	21	2
Identity Deception	1	11
Insurance Fraud	1	1

Note: 8 current admissions have missing sentencing data due to processing or because of safekeeper status.

INDIANA DEPARTMENT OF CORRECTION

June 2019 Admissions

by Most Serious Offense

Most Serious Offense	F1	F2	F3	F4	F5	F6	FA	FB	FC	FD	Murder	N
Intimidation	7	3	2
Kidnapping	.	.	1	.	.	.	2	16
Maintaining Common Nuisance	2	.	.	.	1	.	2
Mischief	1	.	8
Murder	7	30
Neglect Of A Dependent	3	1	.	1	.	.	.	1
Neglect Of A Dependent Resulting in Serious Injury	.	.	1	1
Non Support Of Dependent Child	1	.	.	.	4	.	.	5
Obliterating Handgun I.D.	2	1
Operate Vehicle After Suspended For Life	19	1
Operating Vehicle Intoxicated Resulting in Death	.	.	.	1	3
Operating Vehicle While Intoxicated - Prior Conviction	4	1
Operating Vehicle While Intoxicated-Previous Conviction	3	1
Operating Vehicle-Habit Traffic Violator	3	.	.	.	1	.	11
Possession Of A Destructive Device	1	4
Possession Of Cocaine Or Narcotic Drug	.	.	1	2	13	6	.	.	.	3	.	3
Possession Of Methamphetamine	.	.	5	10	24	13	.	1	.	.	.	1
Possession Of Syringes Or Needles	8	9
Possession Or Use Of Legend Drug	1	1
Prisoner Poss. Dangerous Device/Material	1	.	.	.	1
Rape	2	.	2	.	.	.	1	5	.	.	.	18
Reckless Homicide	1	.	.	1
Resisting Law Enforcement	5	.	.	.	1	.	3
Robbery	.	2	21	.	13	.	.	15	3	.	.	4
Sexual Misconduct With A Minor	.	.	.	6	3	.	.	2	1	1	.	2
Stalking	.	.	.	1	3	6
Strangulation	1	1	1
Theft,Receiving Stolen Property	6	18	.	.	.	4	.	22
Trafficking With An Inmate	3	.	.	.	1	.	.	2
Unlawful Firearm Poss By Serious Felon	.	.	.	17	.	.	.	7	.	.	.	78
Voluntary Manslaughter	.	1	16
Welfare Fraud	2	.	.	9
	12	36	68	103	276	89	18	133	40	17	7	799

Note: 8 current admissions have missing sentencing data due to processing or because of safekeeper status.

INDIANA DEPARTMENT OF CORRECTION
ADULT OFFENDERS
by County of Commitment
for July 2019
Snapshot date: 07/01/2019

County of Commit	Department of Correction	**Community Corrections Programs	Local Jail Holds		COUNTY TOTALS
			DOC Contract	Felony Level 6 Diversions	
Adams	114	89	2	0	205
Allen	1,600	536	9	119	2,264
Bartholomew	285	157	1	44	487
Benton*	20	0	0	11	31
Blackford	62	42	3	13	120
Boone	144	328	2	13	487
Brown	40	25	0	13	78
Carroll	70	11	2	24	107
Cass	248	115	0	42	405
Clark	232	127	3	20	382
Clay	63	180	3	39	285
Clinton	174	55	0	25	254
Crawford	25	180	1	3	209
Daviess	100	127	1	6	234
Dearborn	395	98	9	42	544
Decatur	216	98	0	16	330
DeKalb	188	64	4	41	297
Delaware	380	737	4	6	1,127
Dubois	104	203	1	7	315
Elkhart	1,480	494	9	49	2,032
Fayette	180	121	1	39	341
Floyd	205	59	5	30	299
Fountain	34	85	2	5	126
Franklin*	78	0	0	13	91
Fulton	87	81	1	12	181
Gibson	132	50	0	28	210
Grant	385	102	4	12	503
Greene	151	40	1	23	215
Hamilton	327	268	3	64	662
Hancock	147	228	1	130	506
Harrison	143	80	0	6	229
Hendricks	255	136	2	49	442
Henry	246	79	3	0	328
Howard	359	243	2	53	657
Huntington	352	28	2	50	432
Jackson	237	79	1	25	342
Jasper	98	46	0	5	149
Jay	177	10	1	31	219
Jefferson	188	716	3	4	911
Jennings	106	53	1	38	198
Johnson	401	175	5	62	643
Knox	57	124	3	3	187
Kosciusko	287	132	1	83	503
LaGrange	57	26	0	23	106
Lake	1,043	311	7	47	1,408
LaPorte	371	368	4	0	743
Lawrence	207	77	5	10	299
Madison	1,321	284	2	16	1,623
Marion	5,417	5,258	13	362	11,050
Marshall	198	125	6	22	351
Martin	46	33	0	5	84
Miami	72	36	5	0	113
Monroe	317	606	1	16	940
Montgomery	180	36	1	16	233
Morgan	201	62	3	50	316
Newton*	46	0	0	8	54
Noble	148	92	2	17	259
Ohio	48	4	0	0	52
Orange	142	10	0	9	161
Owen	60	348	1	16	425
Parke	52	7	2	12	73
Perry	87	97	0	9	193
Pike	54	33	2	4	93
Porter	219	84	2	13	318
Posey	91	30	2	9	132
Pulaski	37	14	0	7	58
Putnam	81	50	3	10	144
Randolph	51	31	0	12	94
Ripley	183	56	3	27	269
Rush	79	79	1	0	159
St Joseph	1,070	240	4	15	1,329

*Counties that are not participating in Community Corrections

** Community Corrections data as of 07/03/19

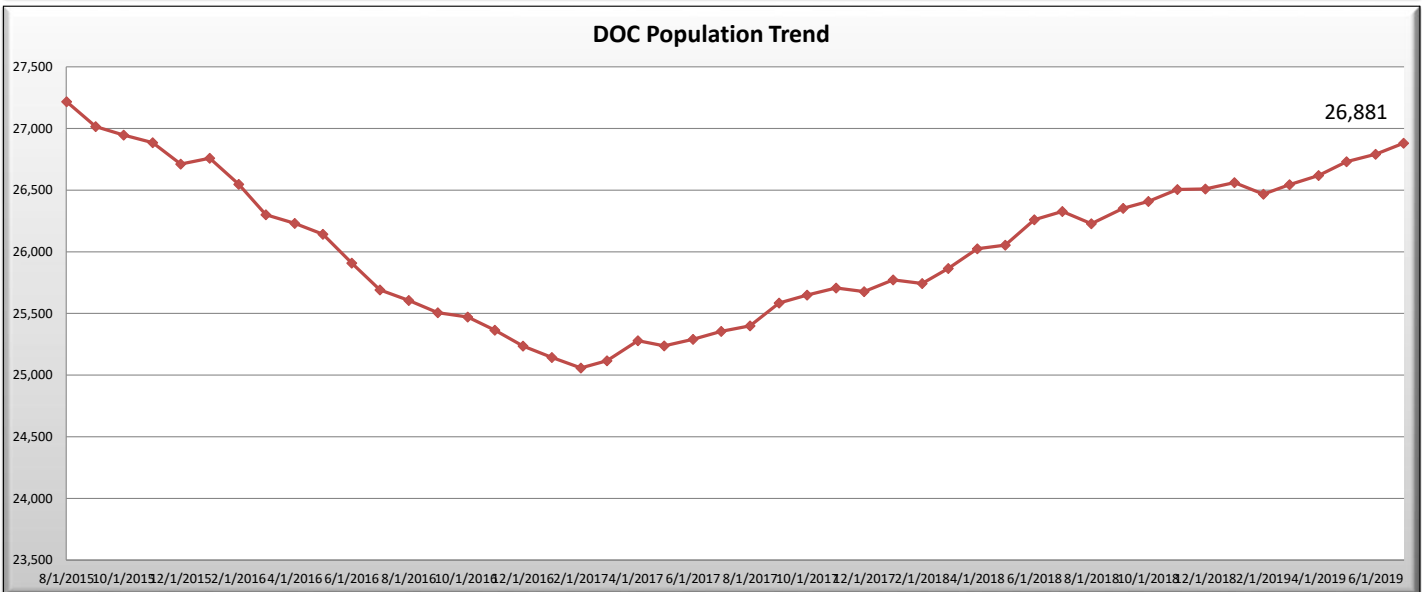
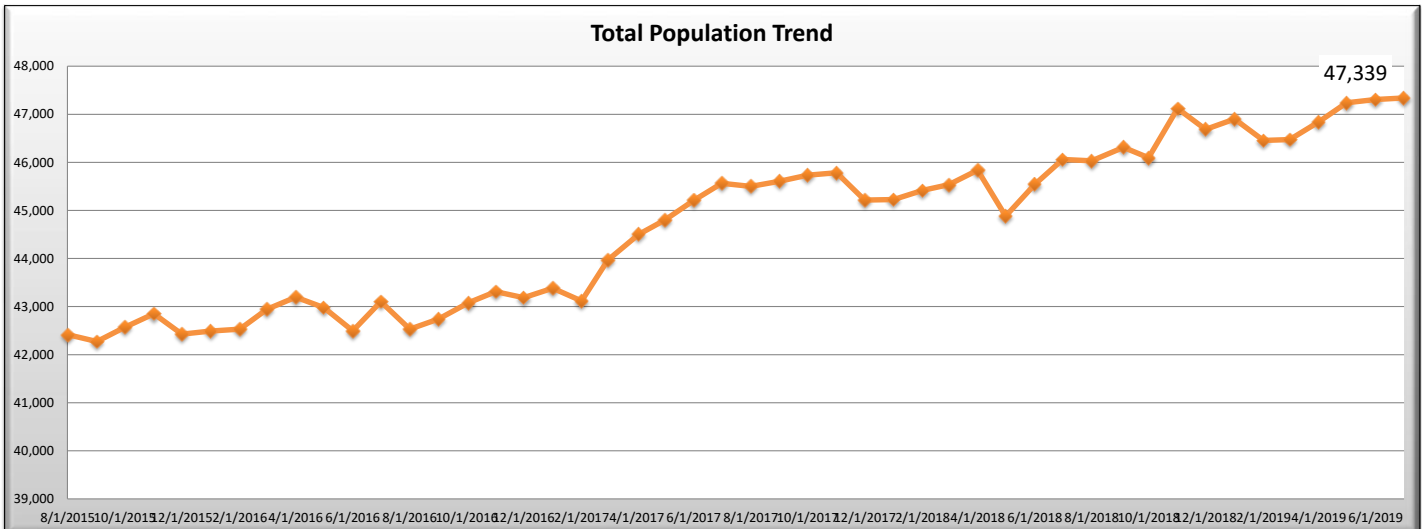
INDIANA DEPARTMENT OF CORRECTION
ADULT OFFENDERS
by County of Commitment
for July 2019
Snapshot date: 07/01/2019

County of Commit	Department of Correction	**Community Corrections Programs	Local Jail Holds		COUNTY TOTALS
			DOC Contract	Felony Level 6 Diversions	
Scott	181	82	6	23	292
Shelby	302	143	0	5	450
Spencer	40	51	10	77	178
Starke	75	74	0	0	149
Steuben	102	66	2	33	203
Sullivan	57	19	0	25	101
Switzerland	35	3	0	4	42
Tippecanoe	796	434	5	38	1,273
Tipton	17	273	0	0	290
Union	22	39	0	3	64
Vanderburgh	981	278	12	165	1,436
Vermillion	79	39	1	12	131
Vigo	439	284	11	5	739
Wabash	200	91	0	48	339
Warren	19	6	1	23	49
Warrick	77	25	0	7	109
Washington	125	274	1	31	431
Wayne	459	68	6	40	573
Wells	186	40	4	11	241
White	67	40	1	24	132
Whitley	143	279	0	20	442
Missing	29	0	0	0	29
TOTALS	26,881	17,606	225	2,627	47,339
			2,852		

*Counties that are not participating in Community Corrections
** Community Corrections data as of 07/03/19

INDIANA DEPARTMENT OF CORRECTION
 ADULT OFFENDERS
 Population Trend Summary
 for July 2019
 Snapshot date: 07/01/2019

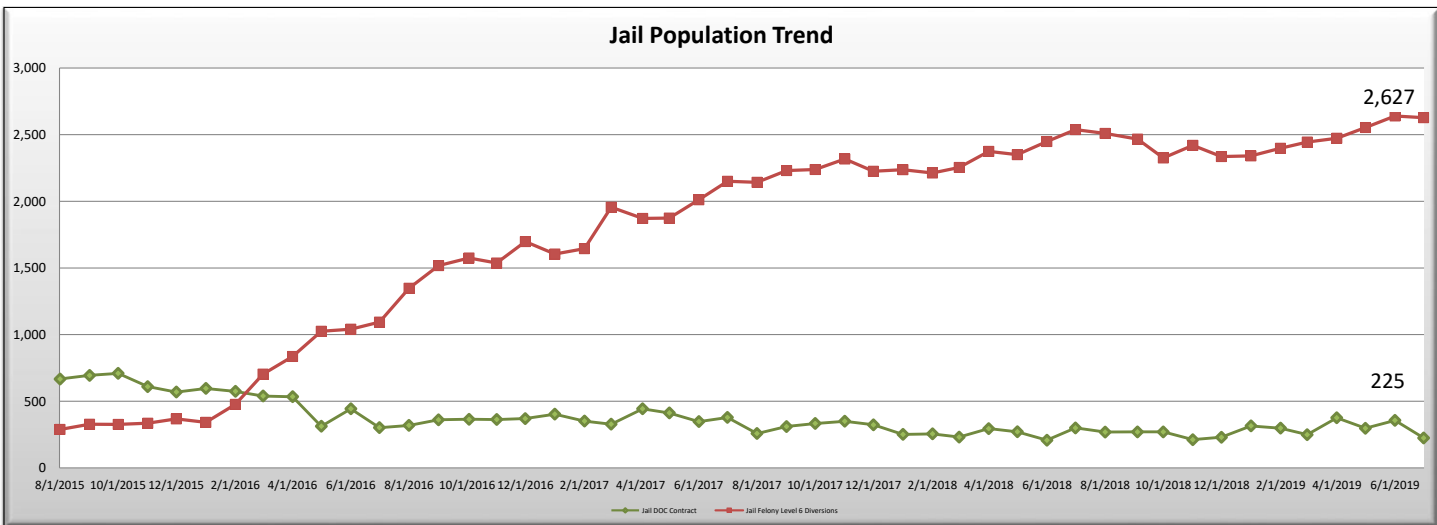
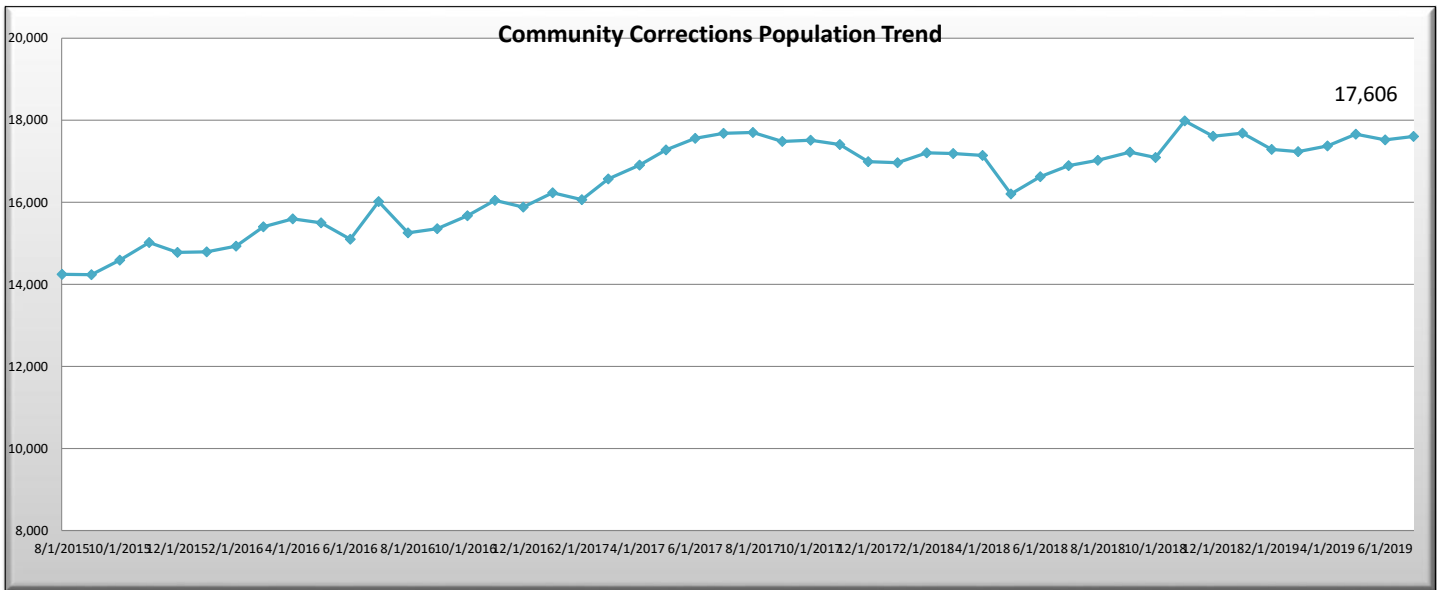
Date	DOC Adult	Community Corrections	Jail DOC Contract	Jail Felony Level 6 Diversions	Total
1/1/2018	25,773	16,964	251	2,237	45,225
2/1/2018	25,743	17,207	255	2,213	45,418
3/1/2018	25,865	17,187	231	2,254	43,708
4/1/2018	26,025	17,143	295	2,374	42,976
5/1/2018	26,054	16,205	271	2,350	44,880
6/1/2018	26,260	16,623	208	2,449	45,540
7/1/2018	26,328	16,894	300	2,538	46,060
8/1/2018	26,228	17,026	269	2,510	46,033
9/1/2018	26,352	17,223	270	2,467	46,312
10/1/2018	26,409	17,093	270	2,325	46,097
11/1/2018	26,505	17,984	212	2,420	47,121
12/1/2018	26,510	17,609	230	2,336	46,685
1/1/2019	26,562	17,685	315	2,341	46,903
2/1/2019	26,468	17,291	298	2,398	46,455
3/1/2019	26,545	17,235	249	2,445	46,474
4/1/2019	26,619	17,373	376	2,473	46,841
5/1/2019	26,731	17,659	297	2,554	47,241
6/1/2019	26,791	17,521	356	2,640	47,308
7/1/2019	↑ 26,881	↑ 17,606	↓ 225	↓ 2,627	↑ 47,339



Jail Felony Level 6 Diversions= F6 offenders that are housed in a county jail and serving time locally

INDIANA DEPARTMENT OF CORRECTION
ADULT OFFENDERS
Population Trend Summary
for July 2019
Snapshot date: 07/01/2019

Date	DOC Adult	Community Corrections	Jail DOC Contract	Jail Felony Level 6 Diversions	Total
1/1/2018	25,773	16,964	251	2,237	45,225
2/1/2018	25,743	17,207	255	2,213	45,418
3/1/2018	25,865	17,187	231	2,254	43,708
4/1/2018	26,025	17,143	295	2,374	42,976
5/1/2018	26,054	16,205	271	2,350	44,880
6/1/2018	26,260	16,623	208	2,449	45,540
7/1/2018	26,328	16,894	300	2,538	46,060
8/1/2018	26,228	17,026	269	2,510	46,033
9/1/2018	26,352	17,223	270	2,467	46,312
10/1/2018	26,409	17,093	270	2,325	46,097
11/1/2018	26,505	17,984	212	2,420	47,121
12/1/2018	26,510	17,609	230	2,336	46,685
1/1/2019	26,562	17,685	315	2,341	46,903
2/1/2019	26,468	17,291	298	2,398	46,455
3/1/2019	26,545	17,235	249	2,445	46,474
4/1/2019	26,619	17,373	376	2,473	46,841
5/1/2019	26,731	17,659	297	2,554	47,241
6/1/2019	26,791	17,521	356	2,640	47,308
7/1/2019	↑ 26,881	↑ 17,606	↓ 225	↓ 2,627	↑ 47,339



Jail Felony Level 6 Diversions= F6 offenders that are housed in a county jail and serving time locally

INDIANA DEPARTMENT OF CORRECTION
by Facility and Highest Felony Classification
for July 2019
Snapshot date: 07/01/2019

Minimum Security - Adult MALE															
Facility Name	Beds	Offenders	% Capacity	Murder	FA	FB	FC	FD	F1	F2	F3	F4	F5	F6	HO
Chain O'Lakes	102	97	95.1%	0	6	18	2	2	0	1	6	13	41	8	0
Edinburgh	344	338	98.3%	0	13	47	10	4	0	5	15	71	133	40	0
Miami - MCA	204	202	99.0%	18	29	59	5	1	0	1	6	30	47	6	0
New Castle - NCA	204	198	97.1%	0	9	35	8	2	0	5	3	27	90	18	0
Pendleton - IRO	220	213	96.8%	23	38	35	7	0	0	3	10	31	53	13	0
Westville - WCA	379	349	92.1%	8	31	60	18	4	0	6	21	51	119	30	1
Wabash Valley - WVA	198	196	99.0%	0	5	22	6	0	0	6	10	54	73	19	1
Sub-Total	1,651	1,593	96.5%	49	131	276	56	13	0	27	71	277	556	134	2

Re-Entry & Work Release - Adult MALE															
Facility Name	Beds	Offenders	% Capacity	Murder	FA	FB	FC	FD	F1	F2	F3	F4	F5	F6	HO
Bartholomew Co. Re-Entry	20	1	5.0%	0	0	0	0	0	0	0	0	0	1	0	0
Chain O'Lakes Re-Entry	38	38	100.0%	0	0	4	0	0	0	0	1	9	21	3	0
Duval Center Re-Entry	40	12	30.0%	0	3	5	0	0	0	0	0	1	2	1	0
Lake Co. Re-Entry	10	5	50.0%	0	0	2	0	0	0	0	0	0	3	0	0
South Bend Re-Entry	172	168	97.7%	11	27	36	7	2	0	0	10	20	45	10	0
VOA/Hope Hall Re-Entry	25	24	96.0%	0	3	8	1	0	0	1	0	4	6	1	0
Starke Co. PI - TC	36	36	100.0%	0	2	6	1	0	0	0	3	3	15	6	0
Sub-Total	341	284	83.3%	11	35	61	9	2	0	1	14	37	93	21	0

Medium Security - Adult MALE															
Facility Name	Beds	Offenders	% Capacity	Murder	FA	FB	FC	FD	F1	F2	F3	F4	F5	F6	HO
Branchville	1,485	1,432	96.4%	18	52	260	52	10	0	81	188	273	371	127	0
Correctional Industrial	1,495	1,461	97.7%	70	245	346	41	6	11	125	199	130	225	63	0
Indiana State Prison ISO	385	378	98.2%	30	72	56	19	3	0	2	41	44	91	20	0
Plainfield	1,696	1,500	88.4%	62	141	322	57	12	0	47	154	223	373	109	0
Putnamville	2,510	2,167	86.3%	47	106	445	82	14	0	89	235	368	606	175	0
Heritage Trail	868	856	98.6%	2	12	78	34	10	0	21	108	138	370	83	0
Westville	2,941	2,439	82.9%	62	215	437	116	14	1	51	266	358	746	171	2
New Castle	2,431	2,391	98.4%	14	725	653	168	5	20	7	204	396	189	10	0
Sub-Total	13811	12624	91.4%	305	1,568	2,597	569	74	32	423	1,395	1,930	2,971	758	2

Note: 31 offenders have missing sentencing data due to processing or because of safekeeper status.

INDIANA DEPARTMENT OF CORRECTION
by Facility and Highest Felony Classification
for July 2019
Snapshot date: 07/01/2019

Maximum Security - Adult MALE															
Facility Name	Beds	Offenders	% Capacity	Murder	FA	FB	FC	FD	F1	F2	F3	F4	F5	F6	HO
Miami	2,984	2,921	97.9%	203	487	640	72	7	138	394	459	235	242	39	0
Indiana State Prison	2,067	1,995	96.5%	696	620	269	22	2	115	86	65	53	59	9	0
Pendleton	1,449	1,413	97.5%	464	458	173	11	0	85	57	69	33	48	13	0
Pendleton Treatment Unit	214	189	88.3%	35	44	45	7	0	8	5	10	11	20	2	0
ISR Secure Housing Unit	69	51	73.9%	17	6	19	2	0	1	1	3	0	0	1	0
New Castle Annex	486	433	89.1%	50	116	129	18	0	4	12	34	25	35	9	0
New Castle Mental Health	128	112	87.5%	15	26	24	4	1	4	1	7	7	16	0	0
WCU Secure Housing Unit	110	77	70.0%	14	18	22	3	0	0	1	5	5	5	3	0
Wabash Valley	1,785	1,718	96.2%	545	598	216	12	2	95	50	73	51	62	9	0
WVS Secure Housing Unit	216	192	88.9%	34	32	51	4	0	4	6	15	17	25	2	0
Sub-Total	9,508	9,076	95.5%	2,073	2,405	1,588	155	12	454	613	740	437	512	87	0

Intake Facility - Adult MALE															
Reception Diag. Center	695	651	93.7%	6	16	69	29	11	13	31	56	105	248	67	0
Sub-Total	695	651	93.7%	6	16	69	29	11	13	31	56	105	248	67	0

Minimum Security & Re-Entry - Adult FEMALE															
Facility Name	Beds	Offenders	% Capacity	Murder	FA	FB	FC	FD	F1	F2	F3	F4	F5	F6	HO
Madison	706	640	90.7%	6	24	83	21	4	0	35	78	142	181	66	0
Jefferson Co. Re-Entry	72	71	98.6%	2	4	15	3	1	0	1	4	9	26	5	1
Crane House	45	26	57.8%	0	0	3	2	0	0	0	1	9	8	3	0
Sub-Total	823	737	89.6%	8	28	101	26	5	0	36	83	160	215	74	1

Medium Security - Adult FEMALE															
Facility Name	Beds	Offenders	% Capacity	Murder	FA	FB	FC	FD	F1	F2	F3	F4	F5	F6	HO
Rockville	1,041	983	94.4%	47	104	120	31	3	22	95	144	120	209	88	0
Sub-Total	1,041	983	94.4%	47	104	120	31	3	22	95	144	120	209	88	0

Maximum Security - Adult FEMALE															
Women's Prison	727	703	96.7%	72	65	80	20	4	14	51	75	91	154	77	0
Rockville Intake	212	199	93.9%	2	3	9	5	4	1	17	19	33	70	36	0
Sub-Total	939	902	96.1%	74	68	89	25	8	15	68	94	124	224	113	0

TOTAL	28,809	26,850	93.2%	2,573	4,355	4,901	900	128	536	1,294	2,597	3,190	5,028	1,342	5
--------------	---------------	---------------	--------------	--------------	--------------	--------------	------------	------------	------------	--------------	--------------	--------------	--------------	--------------	----------

Note: 31 offenders have missing sentencing data due to processing or because of safekeeper status.

INDIANA DEPARTMENT OF CORRECTION
ADULT OFFENDERS
by Most Serious Offense, Alphabetical
for July 2019
Snapshot date: 07/01/2019

Most Serious Offense	Murder	FA	FB	FC	FD	F1	F2	F3	F4	F5	F6	HO	Total
Accident Fail To Stop Resulting in Serious Injury or Death	.	.	1	1	20	.	.	22
Aggravated Battery	.	.	171	.	.	8	.	312	491
Aiding Inducing/Causing An Offense	.	49	64	5	.	10	25	56	30	50	2	.	291
Arson	.	14	51	.	.	.	3	2	70	.	.	.	140
Assisting A Criminal	.	.	.	4	13	1	.	18
Assisting Suicide	.	.	.	1	1
Attempt To Commit Felony	.	482	114	8	.	106	38	89	26	75	4	.	942
Auto Theft, Receiving Stolen Auto Parts	.	.	.	11	6	23	59	.	99
Battery	.	24	38	76	1	.	8	40	4	638	55	.	884
Battery By Bodily Waste	.	.	1	.	1	2
Battery To A Child Causing Death	.	4	4
Bribery	.	.	.	1	4	.	.	5
Burglary	.	257	932	154	.	29	139	46	956	585	.	.	3,098
Carjacking	.	.	34	34
Carrying Handgun Without License	.	.	.	5	5
Causing Suicide	.	.	1	1
Check Deception	1	1	.	2
Check Fraud	.	.	.	1	2	1	2	.	6
Child Exploitation	.	.	.	11	11	34	.	.	56
Child Molesting	.	1,394	378	112	.	284	4	130	274	.	.	.	2,576
Child Possession of Firearm	1	.	.	1
Child Seduction	.	.	.	2	5	.	.	7
Child Solicitation	.	.	1	4	1	.	.	.	15	35	.	.	56
Conspiracy	.	105	77	6	.	8	57	56	36	43	2	.	390
Contributing To The Delinquency Of Minor	1	.	1
Controlled Substance Registration	.	.	.	2	1	3	.	6
Conversion	4	.	.	4
Corrupt Business Influence	.	.	.	13	53	.	.	66
Criminal Confinement	.	.	126	16	2	.	7	106	.	110	11	.	378
Criminal Deviate Conduct	.	135	73	208
Criminal Gang Enhancement	1	1
Criminal Recklessness	.	.	.	11	3	51	16	.	81
Criminal Trespass	1	.	1
Dangerous Control Of A Handgun	1	.	.	1
Deal Sub Represented To Be Controlled Sub	1	.	1
Dealing In Cocaine Or Narcotic Drug	.	665	540	.	.	.	311	203	279	248	.	.	2,246
Dealing In Marijuana, Hash, or Hash Oil	.	.	.	3	22	3	.	28
Dealing In Methamphetamine	.	200	456	.	.	.	483	324	480	361	.	.	2,304
Dealing In Schedule I, II, or III Controlled Substance	.	76	281	.	.	.	18	16	28	24	1	.	444
Dealing In Schedule IV Controlled Substance	.	.	6	7	.	.	.	8	2	4	.	.	27
Dealing Possessing Look-Alike Substance	.	.	.	4	1	23	18	.	46
Dealing Substance Represented To Be Controlled Substance	1	1
Disarming A Law Enforcement Officer	.	.	.	1	.	.	.	1	.	15	.	.	17

Note: 32 offenders have missing sentencing data due to processing or because of safekeeper status.

INDIANA DEPARTMENT OF CORRECTION
ADULT OFFENDERS
by Most Serious Offense, Alphabetical
for July 2019
Snapshot date: 07/01/2019

Most Serious Offense	Murder	FA	FB	FC	FD	F1	F2	F3	F4	F5	F6	HO	Total
Dissemination Of Matter Harmful To Minor	1	.	1
Domestic Battery	1	221	49	.	271
Domestic Battery with Serious Bodily Injury Under Age 14	4	4
Driving Whl/Suspended Resulting In Death	1	.	.	1
Escape	4	112	130	.	246
Exploitation Of Endangered Adult	1	1
Fail To Return To Accident Resulting in Serious Injury	23	23
Fail To Stop After Accident - Operating Vehicle Intoxicated	.	.	5	5
Fail To Stop At An Accident/Sbi/Prior	1	1
Failure Of Sex Offender To Possess Id	1	1
Failure To Appear	2	.	2
Failure To Register As A Sex Offender	.	.	.	9	164	10	.	183
Failure To Return Lawful Detention/Escape	.	.	8	9	3	20
Felon Fraud in Offer	1	.	.	.	1
Firearm Within 1 Mile School Property Without License	.	.	.	8	8
Forgery,Counterfeiting,Application Fraud	.	.	.	100	31	.	131
Fraud	2	18	.	20
Fraud On A Financial Institution	.	.	.	17	84	.	.	101
Habitual Offender	1	2	.	3
Habitual Offender Substance Abuse	1	1
Habitual Substance Offender	4	4
Habitual Vehicular Subst Offender	1	1
Handgun Violation	.	.	.	5	344	.	.	349
Home Improvement Fraud Offenses	.	.	.	3	1	3	.	.	7
Human Sexual Trafficking	.	.	4	.	.	.	1	2	2	.	.	.	9
Identity Deception	1	10	.	11
Incest	.	.	21	5	5	6	.	.	37
Inmate Fraud	1	.	.	1
Insurance Fraud	1	.	.	1
Intimidation	.	.	.	9	1	120	19	.	149
Invasion Of Privacy	10	.	10
Involuntary Manslaughter	6	.	.	6
Kidnapping	.	84	9	19	.	10	1	.	123
Legend Drug Deception	1	.	1
Maintaining Common Nuisance	4	23	.	27
Manufacture Methamphetamine	4	4
Manufacture Methamphetamine	13	.	.	.	13
Mischief	2	1	.	3
Murder	2,573	2,573
Neglect Of A Dependent	.	.	25	6	29	7	.	67
Neglect Of A Dependent Resulting in Serious Injury	69	69
Neglect Of Dependent Resulting In Death	.	57	.	.	.	37	94
Non Support Of Dependent Child	.	.	.	64	9	18	12	.	103

Note: 32 offenders have missing sentencing data due to processing or because of safekeeper status.

INDIANA DEPARTMENT OF CORRECTION
ADULT OFFENDERS
by Most Serious Offense, Alphabetical
for July 2019
Snapshot date: 07/01/2019

Most Serious Offense	Murder	FA	FB	FC	FD	F1	F2	F3	F4	F5	F6	HO	Total
Obliterating Handgun I.D.	.	.	.	1	13	.	.	14
Obstruction Of Justice	1	8	5	.	14
Operate Vehicle After Suspended For Life	.	.	.	30	373	.	.	403
Operating Vehicle Intoxicated	4	.	.	4
Operating Vehicle Intoxicated Resulting in Death	.	.	29	2	56	25	.	.	112
Operating Vehicle Intoxicated Resulting in Serious Bodily Injury	.	.	.	3	3	16	4	.	26
Operating Vehicle Intoxicated w/ Previous Conviction	.	.	.	1	1
Operating Vehicle Intoxicated-Prior Conviction	6	26	.	32
Operating Vehicle While Intoxicated - Endangering Person	1	1
Operating Vehicle While Intoxicated - Prior Conviction	2	.	2
Operating Vehicle With Schedule I in Body - Causing Death	.	.	.	1	1
Operating Vehicle With Schedule I,II in Body - Causing Death	1	.	.	.	1
Operating Vehicle-Habit Traffic Violator	.	.	.	1	4	24	.	29
Opererating Vehicle While Intoxicated - Prior Conviction	61	.	61
Perjury	1	.	1
Pharmacy Robbery	3	.	.	.	3
Possess Chemical Reagents Or Precursors	.	.	.	8	8
Possess Destructive Device Or Explosive	.	1	7	.	.	1	.	.	9
Possess Of Precursors	2	3	.	5
Possess of Precursors	3	.	.	3
Possession Of A Controlled Substance	.	.	1	5	12	2	.	20
Possession Of A Machine Gun Or Bomb	1	.	.	1
Possession Of Child Pornography	19	1	.	20
Possession Of Cocaine Or Narcotic Drug	.	40	42	14	3	.	.	40	59	134	92	.	424
Possession Of Dangerous Device	7	7	.	.	14
Possession Of Marijuana, Hash, Hash Oil	1	1	.	2
Possession Of Methamphetamine	.	4	44	10	4	.	.	121	159	334	221	.	897
Possession Of Syringes Or Needles	15	83	.	98
Possession Or Use Of Legend Drug	.	.	.	1	6	11	.	18
Prisoner Poss. Dangerous Device/Material	.	.	11	11
Promoting Prostitution	.	.	.	2	6	.	.	8
Promoting Prostitution Under Age 18	.	.	3	3
Prostitution	1	.	1
Rape	.	246	127	.	.	54	.	105	532
Reckless Homicide	.	.	.	8	31	.	.	39
Removing, Damaging, Or Altering a VIN	.	.	.	1	1
Residential Entry	1	23	.	24
Resisting Law Enforcement	.	.	4	1	5	.	1	11	.	10	52	.	84

Note: 32 offenders have missing sentencing data due to processing or because of safekeeper status.

INDIANA DEPARTMENT OF CORRECTION
ADULT OFFENDERS
by Most Serious Offense, Alphabetical
for July 2019
Snapshot date: 07/01/2019

Most Serious Offense	Murder	FA	FB	FC	FD	F1	F2	F3	F4	F5	F6	HO	Total
Robbery	.	229	771	62	.	.	97	808	.	252	.	.	2,219
Sale Of Unregistered Security	.	.	.	2	2
Sex Predator Unlawful Job Near Children	1	.	.	1
Sexual Battery	.	.	.	1	5	.	.	.	10	.	1	.	17
Sexual Misconduct With A Minor	.	3	183	32	1	.	.	.	140	71	.	.	430
Sexual Misconduct w/ Service Provider	2	.	.	2
Stalking	.	.	4	5	1	.	.	.	6	36	1	.	53
Strangulation	1	2	11	.	14
Synthetic Identity Deception	6	.	6
Terroristic Mischief	1	.	.	1
Theft,Receiving Stolen Property	.	.	.	2	30	30	202	.	264
Trafficking With An Inmate	.	.	.	7	60	.	.	67
Unlawful Firearm Poss By Serious Felon	.	.	236	508	.	.	.	744
Vicarious Sexual Gratification	.	.	3	1	4	.	.	.	8
Voluntary Manslaughter	.	286	35	.	.	.	86	407
Welfare Fraud	.	.	.	7	2	9
	2,573	4,355	4,901	900	128	536	1,294	2,597	3,190	5,028	1,342	5	26,849

Note: 32 offenders have missing sentencing data due to processing or because of safekeeper status.

INDIANA DEPARTMENT OF CORRECTION
ADULT OFFENDERS
by Most Serious Offense, Ranked
for June 2019
Snapshot date: 06/01/2019

Most Serious Offense	Murder	FA	FB	FC	FD	F1	F2	F3	F4	F5	F6	HO	Total
Burglary	.	257	932	154	.	29	139	46	956	585	.	.	3,098
Child Molesting	.	1,394	378	112	.	284	4	130	274	.	.	.	2,576
Murder	2,573	2,573
Dealing In Methamphetamine	.	200	456	.	.	.	483	324	480	361	.	.	2,304
Dealing In Cocaine Or Narcotic Drug	.	665	540	.	.	.	311	203	279	248	.	.	2,246
Robbery	.	229	771	62	.	.	97	808	.	252	.	.	2,219
Attempt To Commit Felony	.	482	114	8	.	106	38	89	26	75	4	.	942
Possession Of Methamphetamine	.	4	44	10	4	.	.	121	159	334	221	.	897
Battery	.	24	38	76	1	.	8	40	4	638	55	.	884
Unlawful Firearm Poss By Serious Felon	.	.	236	508	.	.	.	744
Rape	.	246	127	.	.	54	.	105	532
Aggravated Battery	.	.	171	.	.	8	.	312	491
Dealing In Schedule I, II, or III Controlled Substance	.	76	281	.	.	.	18	16	28	24	1	.	444
Sexual Misconduct With A Minor	.	3	183	32	1	.	.	.	140	71	.	.	430
Possession Of Cocaine Or Narcotic Drug	.	40	42	14	3	.	.	40	59	134	92	.	424
Voluntary Manslaughter	.	286	35	.	.	.	86	407
Operate Vehicle After Suspended For Life	.	.	.	30	373	.	.	403
Conspiracy	.	105	77	6	.	8	57	56	36	43	2	.	390
Criminal Confinement	.	.	126	16	2	.	7	106	.	110	11	.	378
Handgun Violation	.	.	.	5	344	.	.	349
Aiding Inducing/Causing An Offense	.	49	64	5	.	10	25	56	30	50	2	.	291
Domestic Battery	1	221	49	.	271
Theft,Receiving Stolen Property	.	.	.	2	30	30	202	.	264
Escape	4	112	130	.	246
Criminal Deviate Conduct	.	135	73	208
Failure To Register As A Sex Offender	.	.	.	9	164	10	.	183
Intimidation	.	.	.	9	1	120	19	.	149
Arson	.	14	51	.	.	.	3	2	70	.	.	.	140
Forgery,Counterfeiting,Application Fraud	.	.	.	100	31	.	131
Kidnapping	.	84	9	19	.	10	1	.	123
Operating Vehicle Intoxicated Resulting in Death	.	.	29	2	56	25	.	.	112
Non Support Of Dependent Child	.	.	.	64	9	18	12	.	103
Fraud On A Financial Institution	.	.	.	17	84	.	.	101
Auto Theft, Receiving Stolen Auto Parts	.	.	.	11	6	23	59	.	99
Possession Of Syringes Or Needles	15	83	.	98
Neglect Of Dependent Resulting In Death	.	57	.	.	.	37	94
Resisting Law Enforcement	.	.	4	1	5	.	1	11	.	10	52	.	84
Criminal Recklessness	.	.	.	11	3	51	16	.	81
Neglect Of A Dependent Resulting in Serious Injury	69	69
Neglect Of A Dependent	.	.	25	6	29	7	.	67

Note: 32 offenders have missing sentencing data due to processing or because of safekeeper status.

INDIANA DEPARTMENT OF CORRECTION
ADULT OFFENDERS
by Most Serious Offense, Ranked
for June 2019
Snapshot date: 06/01/2019

Most Serious Offense	Murder	FA	FB	FC	FD	F1	F2	F3	F4	F5	F6	HO	Total
Trafficking With An Inmate	.	.	.	7	60	.	.	67
Corrupt Business Influence	.	.	.	13	53	.	.	66
Opererating Vehicle While Intoxicated - Prior Conviction	61	.	61
Child Exploitation	.	.	.	11	11	34	.	.	56
Child Solicitation	.	.	1	4	1	.	.	.	15	35	.	.	56
Stalking	.	.	4	5	1	.	.	.	6	36	1	.	53
Dealing Possessing Look-Alike Substance	.	.	.	4	1	23	18	.	46
Reckless Homicide	.	.	.	8	31	.	.	39
Incest	.	.	21	5	5	6	.	.	37
Carjacking	.	.	34	34
Operating Vehicle Intoxicated-Prior Conviction	6	26	.	32
Operating Vehicle-Habit Traffic Violator	.	.	.	1	4	24	.	29
Dealing In Marijuana, Hash, or Hash Oil	.	.	.	3	22	3	.	28
Dealing In Schedule IV Controlled Substance	.	.	6	7	.	.	.	8	2	4	.	.	27
Maintaining Common Nuisance	4	23	.	27
Operating Vehicle Intoxicated Resulting in Serious Bodily Injury	.	.	.	3	3	16	4	.	26
Residential Entry	1	23	.	24
Fail To Return To Accident Resulting in Serious Injury	23	23
Accident Fail To Stop Resulting in Serious Injury or Death	.	.	1	1	20	.	.	22
Failure To Return Lawful Detention/Escape	.	.	8	9	3	20
Fraud	2	18	.	20
Possession Of A Controlled Substance	.	.	1	5	12	2	.	20
Possession Of Child Pornography	19	1	.	20
Assisting A Criminal	.	.	.	4	13	1	.	18
Possession Or Use Of Legend Drug	.	.	.	1	6	11	.	18
Disarming A Law Enforcement Officer	.	.	.	1	.	.	.	1	.	15	.	.	17
Sexual Battery	.	.	.	1	5	.	.	.	10	.	1	.	17
Obliterating Handgun I.D.	.	.	.	1	13	.	.	14
Obstruction Of Justice	1	8	5	.	14
Possession Of Dangerous Device	7	7	.	.	14
Strangulation	1	2	11	.	14
Manufacture Methamphetamine	13	.	.	.	13
Identity Deception	1	10	.	11
Prisoner Poss. Dangerous Device/Material	.	.	11	11
Invasion Of Privacy	10	.	10
Human Sexual Trafficking	.	.	4	.	.	.	1	2	2	.	.	.	9
Possess Destructive Device Or Explosive	.	1	7	.	.	1	.	.	9
Welfare Fraud	.	.	.	7	2	9

Note: 32 offenders have missing sentencing data due to processing or because of safekeeper status.

INDIANA DEPARTMENT OF CORRECTION
ADULT OFFENDERS
by Most Serious Offense, Ranked
for June 2019
Snapshot date: 06/01/2019

Most Serious Offense	Murder	FA	FB	FC	FD	F1	F2	F3	F4	F5	F6	HO	Total
Firearm Within 1 Mile School Property Without License	.	.	.	8	8
Possess Chemical Reagents Or Precursors	.	.	.	8	8
Promoting Prostitution	.	.	.	2	6	.	.	8
Vicarious Sexual Gratification	.	.	3	1	4	.	.	.	8
Child Seduction	.	.	.	2	5	.	.	7
Home Improvement Fraud Offenses	.	.	.	3	1	3	.	.	7
Check Fraud	.	.	.	1	2	1	2	.	6
Controlled Substance Registration	.	.	.	2	1	3	.	6
Involuntary Manslaughter	6	.	.	6
Synthetic Identity Deception	6	.	6
Bribery	.	.	.	1	4	.	.	5
Carrying Handgun Without License	.	.	.	5	5
Fail To Stop After Accident - Operating Vehicle Intoxicated	.	.	5	5
Possess Of Precursors	2	3	.	5
Battery To A Child Causing Death	.	4	4
Conversion	4	.	.	4
Domestic Battery with Serious Bodily Injury Under Age 14	4	4
Habitual Substance Offender	4	4
Manufacture Methamphetamine	4	4
Operating Vehicle Intoxicated	4	.	.	4
Habitual Offender	1	2	.	3
Mischief	2	1	.	3
Pharmacy Robbery	3	.	.	.	3
Possess of Precursors	3	.	.	3
Promoting Prostitution Under Age 18	.	.	3	3
Battery By Bodily Waste	.	.	1	.	1	2
Check Deception	1	1	.	2
Failure To Appear	2	.	2
Operating Vehicle While Intoxicated - Prior Conviction	2	.	2
Possession Of Marijuana, Hash, Hash Oil	1	1	.	2
Sale Of Unregistered Security	.	.	.	2	2
Sexual Misconduct w/ Service Provider	2	.	.	2
Assisting Suicide	.	.	.	1	1
Causing Suicide	.	.	1	1
Child Possession of Firearm	1	.	.	1
Contributing To The Delinquency Of Minor	1	.	1
Criminal Gang Enhancement	1	1
Criminal Trespass	1	.	1

Note: 32 offenders have missing sentencing data due to processing or because of safekeeper status.

INDIANA DEPARTMENT OF CORRECTION
ADULT OFFENDERS
by Most Serious Offense, Ranked
for June 2019
Snapshot date: 06/01/2019

Most Serious Offense	Murder	FA	FB	FC	FD	F1	F2	F3	F4	F5	F6	HO	Total
Dangerous Control Of A Handgun	1	.	.	1
Deal Sub Represented To Be Controlled Sub	1	.	1
Dealing Substance Represented To Be Controlled Substance	1	1
Dissemination Of Matter Harmful To Minor	1	.	1
Driving Whl/Suspended Resulting In Death	1	.	.	1
Exploitation Of Endangered Adult	1	1
Fail To Stop At An Accident/Sbi/Prior	1	1
Failure Of Sex Offender To Possess Id	1	1
Felon Fraud in Offer	1	.	.	.	1
Habitual Offender Substance Abuse	1	1
Habitual Vehicular Subst Offender	1	1
Inmate Fraud	1	.	.	1
Insurance Fraud	1	.	.	1
Legend Drug Deception	1	.	1
Operating Vehicle Intoxicated w/ Previous Conviction	.	.	.	1	1
Operating Vehicle While Intoxicated - Endangering Person	1	1
Operating Vehicle With Schedule I in Body - Causing Death	.	.	.	1	1
Operating Vehicle With Schedule I,II in Body - Causing Death	1	.	.	.	1
Perjury	1	.	1
Possession Of A Machine Gun Or Bomb	1	.	.	1
Prostitution	1	.	1
Removing, Damaging, Or Altering a VIN	.	.	.	1	1
Sex Predator Unlawful Job Near Children	1	.	.	1
Terroristic Mischief	1	.	.	1
Total	2,573	4,355	4,901	900	128	536	1,294	2,597	3,190	5,028	1,342	5	26,849

Note: 32 offenders have missing sentencing data due to processing or because of safekeeper status.

Felony Levels By Facility
For Most Serious Offense
July 2019
Snapshot Date July 1st, 2019

INDIANA DEPARTMENT OF CORRECTION
ADULT OFFENDERS
by Most Serious Offense

Branchville Correctional Facility												
Most Serious Offense	Murder	FA	FB	FC	FD	F1	F2	F3	F4	F5	F6	Total
Aggravated Battery	.	.	4	11	.	.	.	15
Aiding Inducing/Causing An Offense	.	1	3	.	.	.	1	1	2	1	.	9
Arson	.	1	2	2	.	.	5
Assisting A Criminal	2	.	2
Attempt To Commit Felony	.	8	5	.	.	.	3	4	.	6	.	26
Auto Theft, Receiving Stolen Auto Parts	1	4	7	12
Battery	.	.	1	5	.	.	1	5	.	43	7	62
Burglary	.	5	60	5	.	.	5	5	81	55	.	216
Carjacking	.	.	3	3
Child Molesting	.	1	2	3
Conspiracy	.	5	6	1	.	.	5	10	6	2	1	36
Conversion	1	.	1
Corrupt Business Influence	1	.	1
Criminal Confinement	.	.	5	8	.	11	.	24
Criminal Recklessness	.	.	.	2	2	4	8
Dealing In Cocaine Or Narcotic Drug	.	13	29	.	.	.	19	15	19	15	.	110
Dealing In Methamphetamine	.	8	55	.	.	.	43	60	54	29	.	249
Dealing In Schedule I, II, or III Controlled Substance	.	.	23	.	.	.	1	.	2	.	.	26
Dealing In Schedule IV Controlled Substance	.	.	.	1	1
Dealing Possessing Look-Alike Substance	3	2	5
Disarming A Law Enforcement Officer	.	.	.	1	1
Domestic Battery	15	1	16
Escape	8	10	18
Failure To Register As A Sex Offender	.	.	.	1	12	1	14
Failure To Return Lawful Detention/Escape	.	.	.	2	2
Forgery,Counterfeiting,Application Fraud	.	.	.	4	2	6
Fraud On A Financial Institution	6	.	6
Handgun Violation	.	.	.	1	25	.	26
Home Improvement Fraud Offenses	1	.	1
Intimidation	8	2	10
Involuntary Manslaughter	2	.	2
Kidnapping	1	.	.	.	1
Maintaining Common Nuisance	1	2	3
Manufacture Methamphetamine	1	2	.	.	3
Mischief	1	1

INDIANA DEPARTMENT OF CORRECTION
ADULT OFFENDERS
by Most Serious Offense

Branchville Correctional Facility												
Most Serious Offense	Murder	FA	FB	FC	FD	F1	F2	F3	F4	F5	F6	Total
Murder	18	18
Neglect Of A Dependent	.	.	1	1	1	3
Neglect Of Dependent Resulting In Death	.	2	2
Non Support Of Dependent Child	.	.	.	5	1	6
Obliterating Handgun I.D.	4	.	4
Obstruction Of Justice	2	.	2
Operate Vehicle After Suspended For Life	.	.	.	3	30	.	33
Operating Vehicle Intoxicated	1	.	1
Operating Vehicle Intoxicated Resulting in Death	.	.	2	4	1	.	7
Operating Vehicle Intoxicated Resulting in Serious Bodily Injury	.	.	.	1	1	2
Operating Vehicle Intoxicated-Prior Conviction	1	1
Operating Vehicle-Habit Traffic Violator	3	3
Opererating Vehicle While Intoxicated - Prior Conviction	1	1
Possess Chemical Reagents Or Precursors	.	.	.	2	2
Possess Destructive Device Or Explosive	2	2
Possess Of Precursors	1	1
Possession Of A Controlled Substance	.	.	.	1	1	2
Possession Of Cocaine Or Narcotic Drug	.	2	3	2	3	10	9	29
Possession Of Dangerous Device	1	.	1
Possession Of Methamphetamine	.	.	5	2	.	.	.	18	25	31	26	107
Possession Of Syringes Or Needles	2	8	10
Possession Or Use Of Legend Drug	2	2
Promoting Prostitution	.	.	.	1	1
Rape	.	.	2	2
Reckless Homicide	2	.	2
Residential Entry	7	7
Resisting Law Enforcement	2	9	11
Robbery	.	2	20	7	.	.	2	45	.	16	.	92
Stalking	.	.	.	3	5	.	8
Strangulation	2	2
Theft,Receiving Stolen Property	3	17	20
Trafficking With An Inmate	.	.	.	1	3	.	4
Unlawful Firearm Poss By Serious Felon	.	.	20	62	.	.	82
Voluntary Manslaughter	.	4	1	5
Total	18	52	252	49	8	0	82	186	262	363	127	1399

INDIANA DEPARTMENT OF CORRECTION
ADULT OFFENDERS
by Most Serious Offense

Correctional Industrial Facility												
Most Serious Offense	Murder	FA	FB	FC	FD	F1	F2	F3	F4	F5	F6	Total
Accident Fail To Stop Resulting in Serious Injury or Death	1	.	1
Aggravated Battery	.	.	19	.	.	1	.	36	.	.	.	56
Aiding Inducing/Causing An Offense	.	6	6	.	.	.	2	5	2	.	.	21
Arson	.	1	3	2	.	.	6
Assisting A Criminal	1	.	1
Assisting Suicide	.	.	.	1	1
Attempt To Commit Felony	.	26	8	.	.	2	2	1	1	4	.	44
Auto Theft, Receiving Stolen Auto Parts	.	.	.	1	2	3
Battery	.	1	2	5	.	.	1	1	.	30	3	43
Burglary	.	26	75	10	.	.	17	3	47	35	.	213
Carjacking	.	.	4	4
Carrying Handgun Without License	.	.	.	1	1
Check Fraud	1	1
Child Molesting	.	21	4	1	.	5	.	3	3	.	.	37
Conspiracy	.	14	6	.	.	1	3	6	2	5	.	37
Corrupt Business Influence	1	.	1
Criminal Confinement	.	.	10	2	.	.	.	7	.	7	1	27
Criminal Deviate Conduct	.	2	3	5
Criminal Recklessness	3	1	4
Dealing In Cocaine Or Narcotic Drug	.	68	41	.	.	.	32	8	10	14	.	173
Dealing In Marijuana, Hash, or Hash Oil	1	.	1
Dealing In Methamphetamine	.	23	28	.	.	.	52	22	24	11	.	160
Dealing In Schedule I, II, or III Controlled Substance	.	5	19	1	.	25
Dealing In Schedule IV Controlled Substance	.	.	2	2	.	1	.	5
Dealing Possessing Look-Alike Substance	.	.	.	1	3	2	6
Disarming A Law Enforcement Officer	1	.	1	.	2
Domestic Battery	12	4	16
Escape	6	8	14
Fail To Return To Accident Resulting in Serious Injury	4	.	.	.	4
Failure To Register As A Sex Offender	.	.	.	1	9	2	12
Failure To Return Lawful Detention/Escape	.	.	.	1	1
Firearm Within 1 Mile School Property Without License	.	.	.	1	1
Forgery,Counterfeiting,Application Fraud	.	.	.	6	1	7
Fraud	1	1
Fraud On A Financial Institution	2	.	2
Handgun Violation	17	.	17

INDIANA DEPARTMENT OF CORRECTION
ADULT OFFENDERS
by Most Serious Offense

Correctional Industrial Facility												
Most Serious Offense	Murder	FA	FB	FC	FD	F1	F2	F3	F4	F5	F6	Total
Identity Deception	1	1
Intimidation	5	1	6
Kidnapping	.	8	2	.	.	.	10
Manufacture Methamphetamine	1	.	.	1
Mischief	1	1
Murder	70	70
Neglect Of A Dependent	.	.	2	1	1	4
Neglect Of A Dependent Resulting in Serious Injury	9	.	.	.	9
Neglect Of Dependent Resulting In Death	.	1	.	.	.	1	2
Non Support Of Dependent Child	.	.	.	2	2	4
Obliterating Handgun I.D.	2	.	2
Obstruction Of Justice	1	1
Operate Vehicle After Suspended For Life	.	.	.	2	15	.	17
Operating Vehicle Intoxicated Resulting in Death	.	.	3	1	.	4
Operating Vehicle Intoxicated-Prior Conviction	1	2	3
Operating Vehicle-Habit Traffic Violator	1	1
Opererating Vehicle While Intoxicated - Prior Conviction	1	1
Possess Destructive Device Or Explosive	.	1	1	2
Possess of Precursors	1	.	1
Possession Of A Controlled Substance	.	.	1	.	1	2
Possession Of Cocaine Or Narcotic Drug	.	5	5	1	.	.	.	3	8	4	3	29
Possession Of Methamphetamine	.	.	3	6	4	9	10	32
Possession Of Syringes Or Needles	2	6	8
Rape	.	2	1	.	.	1	.	4	.	.	.	8
Reckless Homicide	.	.	.	1	2	.	3
Residential Entry	1	1
Resisting Law Enforcement	2	2
Robbery	.	16	68	4	.	.	9	76	.	16	.	189
Sexual Misconduct With A Minor	.	.	3	1	.	.	4
Theft,Receiving Stolen Property	1	7	8
Trafficking With An Inmate	2	.	2
Unlawful Firearm Poss By Serious Felon	.	.	27	25	.	.	52
Vicarious Sexual Gratification	.	.	1	1
Voluntary Manslaughter	.	19	2	.	.	.	6	27
Total	70	245	346	41	6	11	125	199	130	225	63	1461

INDIANA DEPARTMENT OF CORRECTION
ADULT OFFENDERS
by Most Serious Offense

Chain O'Lakes Correctional Facility											
Most Serious Offense	FA	FB	FC	FD	F1	F2	F3	F4	F5	F6	Total
Accident Fail To Stop Resulting in Serious Injury or Death	1	.	1
Aggravated Battery	1	.	.	.	1
Aiding Inducing/Causing An Offense	1	1	.	2
Attempt To Commit Felony	.	1	1
Auto Theft, Receiving Stolen Auto Parts	1	.	1
Battery	3	.	3
Burglary	.	3	.	.	.	1	.	8	7	.	19
Conspiracy	1	.	1
Corrupt Business Influence	5	.	5
Criminal Confinement	1	.	1
Criminal Recklessness	1	1
Dealing In Cocaine Or Narcotic Drug	1	5	2	7	5	.	20
Dealing In Marijuana, Hash, or Hash Oil	2	.	2
Dealing In Methamphetamine	4	7	1	2	11	.	25
Dealing In Schedule I, II, or III Controlled Substance	.	2	1	.	.	.	3
Domestic Battery	1	.	1
Forgery,Counterfeiting,Application Fraud	.	.	1	1
Handgun Violation	5	.	5
Identity Deception	1	1
Manufacture Methamphetamine	1	.	.	1
Non Support Of Dependent Child	2	.	2
Operate Vehicle After Suspended For Life	11	.	11
Operating Vehicle Intoxicated-Prior Conviction	.	.	.	1	1	2
Operating Vehicle-Habit Traffic Violator	1	1
Possession Of Cocaine Or Narcotic Drug	1	1	2
Possession Of Methamphetamine	.	.	1	.	.	.	1	1	3	4	10
Robbery	.	3	1	.	1	.	5
Theft,Receiving Stolen Property	.	.	.	1	2	3
Trafficking With An Inmate	1	.	1
Unlawful Firearm Poss By Serious Felon	.	1	2	.	.	3
Total	6	22	2	2	0	1	7	22	62	11	135

INDIANA DEPARTMENT OF CORRECTION
ADULT OFFENDERS
by Most Serious Offense

Edinburgh Correctional Facility												
Most Serious Offense	FA	FB	FC	FD	F1	F2	F3	F4	F5	F6	HO	Total
Accident Fail To Stop Resulting in Serious Injury or Death	1	.	.	1
Aiding Inducing/Causing An Offense	1	1
Attempt To Commit Felony	1	.	2	.	.	3
Auto Theft, Receiving Stolen Auto Parts	.	.	.	1	1	1	.	3
Battery	3	.	.	3
Burglary	.	10	3	30	25	.	.	68
Conspiracy	.	1	1	1	.	.	3
Corrupt Business Influence	.	.	1	1
Criminal Confinement	1	.	.	1
Dealing In Cocaine Or Narcotic Drug	7	14	.	.	.	3	2	8	11	.	.	45
Dealing In Marijuana, Hash, or Hash Oil	1	.	.	1
Dealing In Methamphetamine	4	12	.	.	.	1	4	12	21	.	.	54
Dealing In Schedule I, II, or III Controlled Substance	2	4	3	2	.	.	11
Dealing Possessing Look-Alike Substance	1	.	.	1
Domestic Battery	1	.	1
Fail To Return To Accident Resulting in Serious Injury	1	1
Fail To Stop After Accident - Operating Vehicle Intoxicated	.	1	1
Felon Fraud in Offer	1	.	.	.	1
Forgery,Counterfeiting,Application Fraud	.	.	1	1
Fraud On A Financial Institution	.	.	1	3	.	.	4
Handgun Violation	11	.	.	11
Home Improvement Fraud Offenses	1	.	.	1
Neglect Of A Dependent	1	.	1
Non Support Of Dependent Child	.	.	2	1	3	2	.	8
Obliterating Handgun I.D.	.	.	1	1
Operate Vehicle After Suspended For Life	21	.	.	21
Operating Vehicle Intoxicated Resulting in Death	3	1	.	.	4
Operating Vehicle Intoxicated Resulting in Serious Bodily Injury	1	1	.	2
Opererating Vehicle While Intoxicated - Prior Conviction	5	.	5
Possess Of Precursors	1	.	1
Possession Of A Controlled Substance	.	.	.	1	1
Possession Of Cocaine Or Narcotic Drug	2	1	3	3	.	9
Possession Of Methamphetamine	.	1	4	5	12	16	.	38
Possession Of Syringes Or Needles	1	2	.	3
Possession Or Use Of Legend Drug	1	.	.	1
Resisting Law Enforcement	2	.	2
Robbery	.	4	1	.	.	.	1	.	1	.	.	7
Theft,Receiving Stolen Property	.	.	.	1	1	5	.	7
Trafficking With An Inmate	3	.	.	3
Unlawful Firearm Poss By Serious Felon	7	.	.	.	7
Total	13	47	10	4	0	5	15	71	133	40	0	338

INDIANA DEPARTMENT OF CORRECTION
ADULT OFFENDERS
by Most Serious Offense

Heritage Trail Correctional Facility													
Most Serious Offense	Murder	FA	FB	FC	FD	F1	F2	F3	F4	F5	F6	HO	Total
Accident Fail To Stop Resulting in Serious Injury or Death	1	.	.	1
Aggravated Battery	.	.	3	7	10
Aiding Inducing/Causing An Offense	.	.	1	5	1	.	.	.	7
Arson	.	.	1	3	.	.	.	4
Assisting A Criminal	2	.	.	2
Attempt To Commit Felony	.	.	1	.	.	.	1	1	.	2	.	.	5
Auto Theft, Receiving Stolen Auto Parts	2	4	.	6
Battery	.	.	.	5	1	.	.	1	.	60	3	.	70
Burglary	.	.	17	3	.	.	3	3	44	33	.	.	103
Conspiracy	.	.	3	.	.	.	3	.	3	1	.	.	10
Corrupt Business Influence	.	.	.	2	3	.	.	5
Criminal Confinement	6	.	13	1	.	20
Criminal Gang Enhancement	1	1
Criminal Recklessness	6	1	.	7
Dealing In Cocaine Or Narcotic Drug	.	6	18	.	.	.	6	21	18	16	.	.	85
Dealing In Marijuana, Hash, or Hash Oil	.	.	.	1	1	.	.	2
Dealing In Methamphetamine	.	1	15	.	.	.	5	17	21	15	.	.	74
Dealing In Schedule I, II, or III Controlled Substance	.	1	8	1	1	.	.	11
Dealing In Schedule IV Controlled Substance	1	1
Dealing Possessing Look-Alike Substance	3	.	.	3
Disarming A Law Enforcement Officer	2	.	.	2
Domestic Battery	1	34	6	.	41
Domestic Battery with Serious Bodily Injury Under Age 14	1	1
Escape	1	2	11	.	14
Fail To Return To Accident Resulting in Serious Injury	2	2
Failure To Return Lawful Detention/Escape	1	1
Forgery,Counterfeiting,Application Fraud	.	.	.	1	5	.	6
Fraud On A Financial Institution	.	.	.	1	2	.	.	3
Handgun Violation	.	.	.	1	46	.	.	47
Home Improvement Fraud Offenses	.	.	.	1	1
Intimidation	.	.	.	3	9	3	.	15
Invasion Of Privacy	2	.	2
Involuntary Manslaughter	2	.	.	2
Kidnapping	.	1	1
Manufacture Methamphetamine	1	.	.	.	1
Murder	2	2
Neglect Of A Dependent Resulting in Serious Injury	1	1
Non Support Of Dependent Child	.	.	.	10	1	1	.	.	12
Obliterating Handgun I.D.	1	.	.	1

INDIANA DEPARTMENT OF CORRECTION
 ADULT OFFENDERS
 by Most Serious Offense

Heritage Trail Correctional Facility													
Most Serious Offense	Murder	FA	FB	FC	FD	F1	F2	F3	F4	F5	F6	HO	Total
Operate Vehicle After Suspended For Life	.	.	.	1	42	.	.	43

INDIANA DEPARTMENT OF CORRECTION
ADULT OFFENDERS
by Most Serious Offense

Heritage Trail Correctional Facility													
Most Serious Offense	Murder	FA	FB	FC	FD	F1	F2	F3	F4	F5	F6	HO	Total
Operating Vehicle Intoxicated Resulting in Death	1	3	.	.	4
Operating Vehicle Intoxicated Resulting in Serious Bodily Injury	2	1	.	3
Operating Vehicle Intoxicated-Prior Conviction	2	.	2
Operating Vehicle-Habit Traffic Violator	1	.	1
Opererating Vehicle While Intoxicated - Prior Conviction	8	.	8
Possession Of A Controlled Substance	1	1
Possession Of Cocaine Or Narcotic Drug	.	1	1	2	.	.	.	1	2	9	2	.	18
Possession Of Methamphetamine	.	.	.	2	.	.	.	2	6	19	11	.	40
Possession Of Syringes Or Needles	3	.	3
Possession Or Use Of Legend Drug	1	1	.	2
Promoting Prostitution	1	.	.	1
Reckless Homicide	6	.	.	6
Residential Entry	2	.	2
Resisting Law Enforcement	1	3	.	4
Robbery	.	.	8	1	.	.	3	38	.	14	.	.	64
Stalking	5	.	.	5
Strangulation	1	1	2	.	4
Synthetic Identity Deception	1	.	1
Theft,Receiving Stolen Property	2	6	10	.	18
Trafficking With An Inmate	3	.	.	3
Unlawful Firearm Poss By Serious Felon	.	.	2	36	.	.	.	38
Voluntary Manslaughter	.	2	2
Welfare Fraud	1	1
Total	2	12	78	34	10	0	21	108	138	370	83	0	856

INDIANA DEPARTMENT OF CORRECTION
ADULT OFFENDERS
by Most Serious Offense

Indiana State Prison												
Most Serious Offense	Murder	FA	FB	FC	FD	F1	F2	F3	F4	F5	F6	Total
Accident Fail To Stop Resulting in Serious Injury or Death	1	1	.	2
Aggravated Battery	.	.	19	19	.	.	.	38
Aiding Inducing/Causing An Offense	.	4	6	1	.	1	3	3	.	1	.	19
Arson	.	.	1	.	.	.	1	.	1	.	.	3
Attempt To Commit Felony	.	83	13	.	.	23	1	6	.	1	.	127
Auto Theft, Receiving Stolen Auto Parts	1	1
Battery	.	5	4	7	.	.	1	1	.	23	.	41
Burglary	.	50	59	7	.	7	8	1	28	23	.	183
Carjacking	.	.	5	5
Child Molesting	.	207	14	1	.	65	.	2	5	.	.	294
Conspiracy	.	10	5	.	.	1	3	2	2	1	.	24
Corrupt Business Influence	.	.	.	1	1
Criminal Confinement	.	.	9	.	1	.	2	4	.	6	.	22
Criminal Deviate Conduct	.	21	3	24
Criminal Recklessness	1	2	.	3
Dealing In Cocaine Or Narcotic Drug	.	107	35	.	.	.	22	6	15	6	.	191
Dealing In Marijuana, Hash, or Hash Oil	1	.	1
Dealing In Methamphetamine	.	23	19	.	.	.	29	8	11	5	.	95
Dealing In Schedule I, II, or III Controlled Substance	.	5	12	.	.	.	1	.	.	1	1	20
Dealing Possessing Look-Alike Substance	1	1	2
Domestic Battery	10	1	11
Escape	5	6	11
Fail To Return To Accident Resulting in Serious Injury	2	.	.	.	2
Failure To Return Lawful Detention/Escape	.	.	2	.	1	3
Forgery,Counterfeiting,Application Fraud	.	.	.	3	3
Fraud On A Financial Institution	3	.	3
Handgun Violation	.	.	.	1	15	.	16
Human Sexual Trafficking	.	.	1	1
Intimidation	6	.	6
Kidnapping	.	15	1	16
Maintaining Common Nuisance	2	2
Murder	726	726
Neglect Of A Dependent	.	.	2	1	1	4
Neglect Of A Dependent Resulting in Serious Injury	1	.	.	.	1
Neglect Of Dependent Resulting In Death	.	8	.	.	.	8	16

INDIANA DEPARTMENT OF CORRECTION
ADULT OFFENDERS
by Most Serious Offense

Indiana State Prison												
Most Serious Offense	Murder	FA	FB	FC	FD	F1	F2	F3	F4	F5	F6	Total
Non Support Of Dependent Child	.	.	.	3	1	.	4
Obstruction Of Justice	1	.	1
Operate Vehicle After Suspended For Life	.	.	.	3	11	.	14
Operating Vehicle Intoxicated Resulting in Death	.	.	2	1	1	1	.	5
Operating Vehicle Intoxicated Resulting in Serious Bodily Injury	.	.	.	1	1
Operating Vehicle With Schedule I in Body - Causing Death	.	.	.	1	1
Operating Vehicle-Habit Traffic Violator	1	1	2
Opererating Vehicle While Intoxicated - Prior Conviction	1	1
Possession Of Child Pornography	1	.	1
Possession Of Cocaine Or Narcotic Drug	.	7	1	1	3	3	1	16
Possession Of Methamphetamine	.	.	.	1	.	.	.	3	3	6	4	17
Possession Of Syringes Or Needles	1	1
Prisoner Poss. Dangerous Device/Material	.	.	1	1
Rape	.	52	10	.	.	10	.	2	.	.	.	74
Reckless Homicide	.	.	.	2	2
Resisting Law Enforcement	2	.	1	1	4
Robbery	.	40	71	6	.	.	9	43	.	10	.	179
Sexual Misconduct With A Minor	.	1	9	1	3	.	.	14
Stalking	1	.	1
Synthetic Identity Deception	1	1
Theft,Receiving Stolen Property	1	6	7
Trafficking With An Inmate	2	.	2
Unlawful Firearm Poss By Serious Felon	.	.	18	24	.	.	42
Voluntary Manslaughter	.	54	4	.	.	.	7	65
Welfare Fraud	.	.	.	1	1
Total	726	692	325	41	5	115	88	106	97	150	29	2374

INDIANA DEPARTMENT OF CORRECTION
ADULT OFFENDERS
by Most Serious Offense

Indiana Women's Prison												
Most Serious Offense	Murder	FA	FB	FC	FD	F1	F2	F3	F4	F5	F6	Total
Accident Fail To Stop Resulting in Serious Injury or Death	1	.	1
Aggravated Battery	.	.	2	9	.	.	.	11
Aiding Inducing/Causing An Offense	.	5	3	.	.	1	1	4	1	5	.	20
Arson	.	1	2	.	.	.	1	.	3	.	.	7
Assisting A Criminal	1	.	1
Attempt To Commit Felony	.	7	1	.	.	2	4	2	1	6	.	23
Auto Theft, Receiving Stolen Auto Parts	1	1
Battery	.	2	.	2	22	4	30
Battery To A Child Causing Death	.	1	1
Burglary	.	1	7	1	.	2	1	.	30	10	.	52
Child Molesting	.	.	1	1
Conspiracy	.	3	5	.	.	1	3	2	.	2	.	16
Controlled Substance Registration	.	.	.	1	1
Conversion	1	.	1
Corrupt Business Influence	4	.	4
Criminal Confinement	.	.	2	1	.	.	.	3	.	.	.	6
Criminal Deviate Conduct	.	1	1
Criminal Recklessness	.	.	.	1	1	1	3
Dealing In Cocaine Or Narcotic Drug	.	7	15	.	.	.	4	3	10	11	.	50
Dealing In Methamphetamine	.	10	15	.	.	.	24	19	26	10	.	104
Dealing In Schedule I, II, or III Controlled Substance	.	3	10	.	.	.	1	2	4	1	.	21
Dealing In Schedule IV Controlled Substance	.	.	.	1	1	.	2
Dealing Possessing Look-Alike Substance	1	.	1
Domestic Battery	7	1	8
Escape	9	14	23
Failure To Appear	1	1
Forgery,Counterfeiting,Application Fraud	.	.	.	7	1	8
Fraud	1	1
Fraud On A Financial Institution	.	.	.	1	6	.	7
Handgun Violation	4	.	4
Identity Deception	1	1
Incest	.	.	1	1
Intimidation	1	.	1
Kidnapping	1	.	1	.	2

INDIANA DEPARTMENT OF CORRECTION
ADULT OFFENDERS
by Most Serious Offense

Indiana Women's Prison												
Most Serious Offense	Murder	FA	FB	FC	FD	F1	F2	F3	F4	F5	F6	Total
Maintaining Common Nuisance	2	2
Murder	72	72
Neglect Of A Dependent	.	.	1	3	.	4
Neglect Of A Dependent Resulting In Serious Injury	8	.	.	.	8
Neglect Of Dependent Resulting In Death	.	11	.	.	.	8	19
Non Support Of Dependent Child	.	.	.	3	1	.	4
Operate Vehicle After Suspended For Life	7	.	7
Operating Vehicle Intoxicated Resulting In Death	.	.	1	3	.	.	4
Operating Vehicle Intoxicated Resulting In Serious Bodily Injury	1	.	1
Operating Vehicle Intoxicated-Prior Conviction	1	2	3
Opererating Vehicle While Intoxicated - Prior Conviction	3	3
Possession Of A Controlled Substance	1	1	2
Possession Of Cocaine Or Narcotic Drug	.	.	2	1	.	4	6	13
Possession Of Methamphetamine	1	.	.	1	9	15	18	44
Possession Of Syringes Or Needles	1	4	5
Possession Or Use Of Legend Drug	.	.	.	1	1	2
Promoting Prostitution Under Age 18	.	.	1	1
Reckless Homicide	2	.	2
Resisting Law Enforcement	1	1
Robbery	.	4	8	1	.	.	7	20	.	11	.	51
Sexual Misconduct With A Minor	1	.	1
Theft,Receiving Stolen Property	1	14	15
Trafficking With An Inmate	3	.	3
Unlawful Firearm Poss By Serious Felon	.	.	2	4	.	.	6
Voluntary Manslaughter	.	9	1	.	.	.	5	15
Total	72	65	80	20	4	14	51	75	91	154	77	703

INDIANA DEPARTMENT OF CORRECTION
ADULT OFFENDERS
by Most Serious Offense

Madison Correctional Facility													
Most Serious Offense	Murder	FA	FB	FC	FD	F1	F2	F3	F4	F5	F6	HO	Total
Aggravated Battery	.	.	1	1	2
Aiding Inducing/Causing An Offense	.	1	2	3	4	8	.	.	18
Arson	.	.	1	4	.	.	.	5
Attempt To Commit Felony	.	4	1	1	3	4	.	.	13
Battery	.	.	1	1	.	12	1	.	15
Burglary	.	1	11	5	.	.	1	.	34	10	.	.	62
Conspiracy	.	.	5	1	.	.	3	4	4	3	.	.	20
Controlled Substance Registration	1	.	1
Corrupt Business Influence	.	.	.	1	7	.	.	8
Criminal Recklessness	1	.	.	1
Dealing In Cocaine Or Narcotic Drug	.	5	9	.	.	.	7	12	22	23	.	.	78
Dealing In Methamphetamine	.	9	23	.	.	.	22	33	50	31	.	.	168
Dealing In Schedule I, II, or III Controlled Substance	.	5	29	.	.	.	2	2	4	4	.	.	46
Dealing In Schedule IV Controlled Substance	.	.	1	1	2
Disarming A Law Enforcement Officer	1	.	.	1
Fail To Return To Accident Resulting in Serious Injury	1	1
Forgery,Counterfeiting,Application Fraud	.	.	.	9	3	.	12
Fraud	2	.	2
Fraud On A Financial Institution	9	.	.	9
Habitual Vehicular Subst Offender	1	1
Handgun Violation	2	.	.	2
Identity Deception	1	1	.	2
Intimidation	1	.	.	1
Invasion Of Privacy	1	.	1
Maintaining Common Nuisance	2	2	.	4
Manufacture Methamphetamine	1	1
Manufacture Methamphetamine	1	.	.	.	1
Mischief	1	1
Murder	8	8
Neglect Of A Dependent	.	.	3	6	1	.	10
Neglect Of A Dependent Resulting in Serious Injury	2	2
Non Support Of Dependent Child	1	1
Obstruction Of Justice	1	.	1
Operate Vehicle After Suspended For Life	.	.	.	2	9	.	.	11
Operating Vehicle Intoxicated Resulting in Death	.	.	2	5	3	.	.	10
Operating Vehicle Intoxicated Resulting in Serious Bodily Injury	2	.	.	2
Operating Vehicle Intoxicated w/ Previous Conviction	.	.	.	1	1

INDIANA DEPARTMENT OF CORRECTION
ADULT OFFENDERS
by Most Serious Offense

Madison Correctional Facility													
Most Serious Offense	Murder	FA	FB	FC	FD	F1	F2	F3	F4	F5	F6	HO	Total
Operating Vehicle Intoxicated-Prior Conviction	1	.	1
Operating Vehicle-Habit Traffic Violator	1	.	1
Opererating Vehicle While Intoxicated - Prior Conviction	2	.	2
Possess of Precursors	1	.	.	1
Possession Of Cocaine Or Narcotic Drug	.	.	1	2	.	.	.	2	2	18	7	.	32
Possession Of Dangerous Device	1	.	.	1
Possession Of Methamphetamine	.	.	2	11	17	33	19	.	82
Possession Of Syringes Or Needles	1	8	.	9
Possession Or Use Of Legend Drug	1	1	.	2
Prostitution	1	.	1
Reckless Homicide	1	.	.	1
Residential Entry	1	.	1
Robbery	.	1	4	.	.	.	1	8	.	6	.	.	20
Synthetic Identity Deception	1	.	1
Theft,Receiving Stolen Property	1	2	16	.	19
Trafficking With An Inmate	.	.	.	1	6	.	.	7
Unlawful Firearm Poss By Serious Felon	.	.	1	1	.	.	.	2
Voluntary Manslaughter	.	2	1	3
Welfare Fraud	.	.	.	1	1
	8	28	98	24	5	0	36	82	151	207	71	1	711

INDIANA DEPARTMENT OF CORRECTION
ADULT OFFENDERS
by Most Serious Offense

Miami Correctional Facility												
Most Serious Offense	Murder	FA	FB	FC	FD	F1	F2	F3	F4	F5	F6	Total
Accident Fail To Stop Resulting in Serious Injury or Death	.	.	1	2	.	3
Aggravated Battery	.	.	45	.	.	1	.	90	.	.	.	136
Aiding Inducing/Causing An Offense	.	5	6	.	.	2	6	12	1	2	.	34
Arson	.	3	10	11	.	.	24
Assisting A Criminal	1	.	1
Attempt To Commit Felony	.	61	16	.	.	32	10	22	4	4	.	149
Auto Theft, Receiving Stolen Auto Parts	.	.	.	4	1	2	7	14
Battery	.	3	8	14	.	.	.	5	2	59	5	96
Battery By Bodily Waste	.	.	1	1
Burglary	.	44	164	19	.	6	46	9	94	37	.	419
Carjacking	.	.	5	5
Causing Suicide	.	.	1	1
Child Exploitation	.	.	.	1	1
Child Molesting	.	75	17	3	.	71	1	7	10	.	.	184
Conspiracy	.	20	12	.	.	1	15	5	1	5	.	59
Conversion	1	.	1
Corrupt Business Influence	.	.	.	1	4	.	5
Criminal Confinement	.	.	19	2	.	.	2	33	.	6	.	62
Criminal Deviate Conduct	.	4	1	5
Criminal Recklessness	.	.	.	1	6	2	9
Dealing In Cocaine Or Narcotic Drug	.	137	69	.	.	.	102	20	18	13	.	359
Dealing In Marijuana, Hash, or Hash Oil	2	.	2
Dealing In Methamphetamine	.	38	58	.	.	.	142	29	32	17	.	316
Dealing In Schedule I, II, or III Controlled Substance	.	19	37	.	.	.	6	.	.	2	.	64
Dealing In Schedule IV Controlled Substance	.	.	.	1	1
Dealing Possessing Look-Alike Substance	.	.	.	1	1
Domestic Battery	13	2	15
Domestic Battery with Serious Bodily Injury Under Age 14	1	.	.	.	1
Escape	1	10	3	14
Fail To Return To Accident Resulting in Serious Injury	2	.	.	.	2
Fail To Stop After Accident - Operating Vehicle Intoxicated	.	.	1	1
Failure To Register As A Sex Offender	.	.	.	1	9	.	10
Failure To Return Lawful Detention/Escape	.	.	4	3	1	8
Forgery,Counterfeiting,Application Fraud	.	.	.	7	2	9
Fraud	1	1	2

INDIANA DEPARTMENT OF CORRECTION
ADULT OFFENDERS
by Most Serious Offense

Miami Correctional Facility												
Most Serious Offense	Murder	FA	FB	FC	FD	F1	F2	F3	F4	F5	F6	Total
Fraud On A Financial Institution	.	.	.	1	3	.	4
Handgun Violation	25	.	25
Identity Deception	1	1
Incest	.	.	1	1
Intimidation	.	.	.	2	5	.	7
Kidnapping	.	9	6	6	.	1	.	22
Murder	221	221
Neglect Of A Dependent	.	.	4	4
Neglect Of A Dependent Resulting in Serious Injury	8	.	.	.	8
Neglect Of Dependent Resulting In Death	.	5	.	.	.	8	13
Non Support Of Dependent Child	.	.	.	2	3	.	5
Obliterating Handgun I.D.	1	.	1
Operate Vehicle After Suspended For Life	.	.	.	1	15	.	16
Operating Vehicle Intoxicated Resulting in Death	.	.	3	1	3	1	.	8
Operating Vehicle Intoxicated-Prior Conviction	1	1	2
Operating Vehicle-Habit Traffic Violator	1	1
Opererating Vehicle While Intoxicated - Prior Conviction	1	1
Pharmacy Robbery	1	.	.	1
Possess Chemical Reagents Or Precursors	.	.	.	1	1
Possess Destructive Device Or Explosive	3	3
Possess Of Precursors	1	1
Possession Of A Controlled Substance	1	1
Possession Of Cocaine Or Narcotic Drug	.	8	6	1	.	.	.	9	6	2	3	35
Possession Of Dangerous Device	3	2	.	5
Possession Of Methamphetamine	.	1	5	11	9	9	4	39
Possession Of Syringes Or Needles	1	2	3
Possession Or Use Of Legend Drug	1	1
Prisoner Poss. Dangerous Device/Material	.	.	1	1
Rape	.	10	2	.	.	17	.	4	.	.	.	33
Reckless Homicide	3	.	3
Resisting Law Enforcement	.	.	2	1	1	.	.	3	.	.	4	11
Robbery	.	36	149	7	.	.	27	189	.	18	.	426
Sexual Misconduct With A Minor	.	.	3	6	2	.	11
Stalking	.	.	2	1	3
Theft,Receiving Stolen Property	1	5	6

INDIANA DEPARTMENT OF CORRECTION
ADULT OFFENDERS
by Most Serious Offense

Miami Correctional Facility												
Most Serious Offense	Murder	FA	FB	FC	FD	F1	F2	F3	F4	F5	F6	Total
Trafficking With An Inmate	.	.	.	1	3	.	4
Unlawful Firearm Poss By Serious Felon	.	.	43	62	.	.	105
Vicarious Sexual Gratification	1	.	.	1
Voluntary Manslaughter	.	38	3	.	.	.	29	70
Total	221	516	699	77	8	138	395	465	265	289	45	3118

INDIANA DEPARTMENT OF CORRECTION
ADULT OFFENDERS
by Most Serious Offense

New Castle Correctional Facility												
Most Serious Offense	Murder	FA	FB	FC	FD	F1	F2	F3	F4	F5	F6	Total
Accident Fail To Stop Resulting in Serious Injury or Death	3	.	3
Aggravated Battery	.	.	3	.	.	1	.	5	.	.	.	9
Aiding Inducing/Causing An Offense	.	2	4	1	2	2	.	11
Arson	.	.	3	5	.	.	8
Assisting A Criminal	1	.	1
Attempt To Commit Felony	.	47	26	2	.	4	1	8	6	5	.	99
Auto Theft, Receiving Stolen Auto Parts	.	.	.	1	1	2	4
Battery	.	3	5	6	19	1	34
Burglary	.	21	51	8	.	.	7	2	32	21	.	142
Carjacking	.	.	1	1
Check Fraud	.	.	.	1	1
Child Exploitation	.	.	.	9	10	32	.	51
Child Molesting	.	605	287	100	.	21	3	107	233	.	.	1356
Child Seduction	.	.	.	2	3	.	5
Child Solicitation	.	.	1	4	1	.	.	.	14	27	.	47
Conspiracy	.	6	5	1	.	.	.	4	1	2	.	19
Corrupt Business Influence	3	.	3
Criminal Confinement	.	.	12	4	.	.	.	4	.	5	1	26
Criminal Deviate Conduct	.	46	54	100
Criminal Recklessness	.	.	.	1	1	.	2
Dealing In Cocaine Or Narcotic Drug	.	28	19	.	.	.	4	3	12	8	.	74
Dealing In Marijuana, Hash, or Hash Oil	.	.	.	1	1
Dealing In Methamphetamine	.	3	25	.	.	.	5	1	7	19	.	60
Dealing In Schedule I, II, or III Controlled Substance	.	5	10	1	.	.	.	16
Dealing Possessing Look-Alike Substance	.	.	.	1	1	.	2
Disarming A Law Enforcement Officer	1	.	1
Dissemination Of Matter Harmful To Minor	1	1
Domestic Battery	1	1	2
Escape	2	2	4
Fail To Return To Accident Resulting in Serious Injury	1	.	.	.	1
Failure To Register As A Sex Offender	.	.	.	2	19	1	22
Forgery,Counterfeiting,Application Fraud	.	.	.	7	7
Fraud On A Financial Institution	2	.	2

INDIANA DEPARTMENT OF CORRECTION
ADULT OFFENDERS
by Most Serious Offense

New Castle Correctional Facility												
Most Serious Offense	Murder	FA	FB	FC	FD	F1	F2	F3	F4	F5	F6	Total
Habitual Offender Substance Abuse	1	1
Handgun Violation	13	.	13
Home Improvement Fraud Offenses	.	.	.	1	1
Human Sexual Trafficking	1	2	.	.	3
Incest	.	.	17	5	2	5	.	29
Intimidation	1	1
Kidnapping	.	11	1	.	3	.	15
Manufacture Methamphetamine	1	.	.	1
Murder	79	79
Neglect Of A Dependent	.	.	.	1	1	.	2
Neglect Of A Dependent Resulting in Serious Injury	1	.	.	.	1
Neglect Of Dependent Resulting In Death	.	1	1
Non Support Of Dependent Child	.	.	.	1	1	2	1	5
Operate Vehicle After Suspended For Life	.	.	.	2	14	.	16
Operating Vehicle Intoxicated	0
Operating Vehicle Intoxicated Resulting in Death	.	.	1	3	.	4
Operating Vehicle Intoxicated-Prior Conviction	1	1
Opererating Vehicle While Intoxicated - Prior Conviction	1	1
Possess Chemical Reagents Or Precursors	.	.	.	1	1
Possession Of A Machine Gun Or Bomb	1	.	1
Possession Of Child Pornography	18	1	19
Possession Of Cocaine Or Narcotic Drug	.	.	3	7	4	14
Possession Of Dangerous Device	1	.	1
Possession Of Methamphetamine	.	.	2	1	1	15	6	25
Possession Of Syringes Or Needles	3	3
Promoting Prostitution Under Age 18	.	.	2	2
Rape	.	76	92	.	.	2	.	82	.	.	.	252
Reckless Homicide	.	.	.	2	2
Residential Entry	1	1
Resisting Law Enforcement	1	.	.	.	1
Robbery	.	11	61	4	.	.	4	24	.	8	.	112
Sexual Battery	.	.	.	1	3	.	.	.	9	.	1	14
Sexual Misconduct With A Minor	.	1	143	29	108	59	.	340

INDIANA DEPARTMENT OF CORRECTION
ADULT OFFENDERS
by Most Serious Offense

New Castle Correctional Facility												
Most Serious Offense	Murder	FA	FB	FC	FD	F1	F2	F3	F4	F5	F6	Total
Sexual Misconduct w/ Service Provider	2	.	2
Theft,Receiving Stolen Property	10	10
Unlawful Firearm Poss By Serious Felon	.	.	11	7	.	.	18
Vicarious Sexual Gratification	.	.	2	1	3	.	.	6
Voluntary Manslaughter	.	10	1	.	.	.	1	12
Total	79	876	841	198	8	28	25	248	455	330	37	3125

INDIANA DEPARTMENT OF CORRECTION
ADULT OFFENDERS
by Most Serious Offense

Pendleton Correctional Facility												
Most Serious Offense	Murder	FA	FB	FC	FD	F1	F2	F3	F4	F5	F6	Total
Aggravated Battery	.	.	13	20	.	.	.	33
Aiding Inducing/Causing An Offense	.	4	.	.	.	2	.	1	.	1	.	8
Arson	.	3	6	4	.	.	13
Attempt To Commit Felony	.	70	8	1	.	22	2	3	1	2	.	109
Auto Theft, Receiving Stolen Auto Parts	1	3	4
Battery	.	1	2	7	.	.	1	3	.	17	2	33
Burglary	.	30	59	9	.	6	10	3	29	14	.	160
Carjacking	.	.	4	4
Check Deception	1	.	1
Child Molesting	.	200	10	.	.	48	.	2	3	.	.	263
Conspiracy	.	9	1	.	.	1	2	1	.	.	.	14
Corrupt Business Influence	1	.	1
Criminal Confinement	.	.	18	1	.	.	1	6	.	4	.	30
Criminal Deviate Conduct	.	33	33
Criminal Recklessness	.	.	.	1	1	1	3
Dealing In Cocaine Or Narcotic Drug	.	53	13	.	.	.	14	4	5	4	.	93
Dealing In Marijuana, Hash, or Hash Oil	2	.	2
Dealing In Methamphetamine	.	15	11	.	.	.	10	5	9	8	.	58
Dealing In Schedule I, II, or III Controlled Substance	.	4	10	1	.	.	15
Dealing In Schedule IV Controlled Substance	1	.	1	.	2
Disarming A Law Enforcement Officer	2	.	2
Domestic Battery	3	.	3
Escape	3	2	5
Failure To Register As A Sex Offender	5	.	5
Failure To Return Lawful Detention/Escape	.	.	.	1	1
Forgery,Counterfeiting,Application Fraud	.	.	.	2	1	3
Fraud	1	1
Fraud On A Financial Institution	1	.	1
Handgun Violation	.	.	.	1	11	.	12
Human Sexual Trafficking	1	1
Incest	.	.	1	1	.	.	2
Intimidation	8	.	8
Kidnapping	.	11	1	1	.	.	.	13

INDIANA DEPARTMENT OF CORRECTION
ADULT OFFENDERS
by Most Serious Offense

Pendleton Correctional Facility												
Most Serious Offense	Murder	FA	FB	FC	FD	F1	F2	F3	F4	F5	F6	Total
Maintaining Common Nuisance	2	2
Manufacture Methamphetamine	1	.	.	.	1
Murder	539	539
Neglect Of A Dependent	.	.	2	1	3
Neglect Of A Dependent Resulting in Serious Injury	2	.	.	.	2
Neglect Of Dependent Resulting In Death	.	5	.	.	.	4	9
Non Support Of Dependent Child	.	.	.	1	1
Obliterating Handgun I.D.	1	.	1
Operate Vehicle After Suspended For Life	10	.	10
Operating Vehicle Intoxicated Resulting in Death	.	.	1	3	.	.	4
Perjury	1	1
Possess Of Precursors	1	1
Possession Of Cocaine Or Narcotic Drug	.	.	2	1	3	2	8
Possession Of Dangerous Device	1	.	1
Possession Of Methamphetamine	.	.	4	1	.	.	.	3	3	3	4	18
Possession Of Syringes Or Needles	1	2	3
Prisoner Poss. Dangerous Device/Material	.	.	1	1
Rape	.	45	8	.	.	11	.	4	.	.	.	68
Resisting Law Enforcement	.	.	1	.	.	.	1	1	.	.	2	5
Robbery	.	28	72	1	.	.	15	31	.	7	.	154
Sexual Misconduct With A Minor	.	.	7	7
Stalking	2	1	.	3
Theft,Receiving Stolen Property	.	.	.	1	1	4	6
Trafficking With An Inmate	3	.	3
Unlawful Firearm Poss By Serious Felon	.	.	15	13	.	.	28
Voluntary Manslaughter	.	35	3	.	.	.	8	46
Total	539	546	272	27	0	94	66	92	75	121	29	1861

INDIANA DEPARTMENT OF CORRECTION
ADULT OFFENDERS
by Most Serious Offense

Plainfield Correctional Facility												
Most Serious Offense	Murder	FA	FB	FC	FD	F1	F2	F3	F4	F5	F6	Total
Accident Fail To Stop Resulting in Serious Injury or Death	3	.	3
Aggravated Battery	.	.	10	17	.	.	.	27
Aiding Inducing/Causing An Offense	.	2	8	.	.	.	1	3	.	3	.	17
Arson	.	1	1	3	.	.	5
Assisting A Criminal	2	1	3
Attempt To Commit Felony	.	32	8	8	3	4	1	56
Auto Theft, Receiving Stolen Auto Parts	3	6	9
Battery	.	1	3	7	.	.	.	4	1	46	3	65
Bribery	.	.	.	1	1	.	2
Burglary	.	9	78	15	.	.	6	2	72	49	.	231
Carjacking	.	.	2	2
Check Fraud	1	1	.	2
Child Molesting	.	5	4	1	2	.	.	12
Child Solicitation	1	.	1
Conspiracy	.	9	5	.	.	.	1	3	1	4	1	24
Corrupt Business Influence	.	.	.	2	1	.	3
Criminal Confinement	.	.	14	1	.	.	.	7	.	13	6	41
Criminal Deviate Conduct	.	2	1	3
Criminal Recklessness	.	.	.	2	1	6	.	9
Criminal Trespass	1	1
Dealing In Cocaine Or Narcotic Drug	.	41	51	.	.	.	18	15	20	15	.	160
Dealing In Methamphetamine	.	3	30	.	.	.	16	12	27	26	.	114
Dealing In Schedule I, II, or III Controlled Substance	.	3	25	.	.	.	1	2	2	1	.	34
Dealing Possessing Look-Alike Substance	2	2
Dealing Substance Represented To Be Controlled Substance	1	1
Domestic Battery	24	5	29
Domestic Battery with Serious Bodily Injury Under Age 14	1	.	.	.	1
Escape	13	11	24
Fail To Return To Accident Resulting in Serious Injury	1	.	.	.	1
Failure To Register As A Sex Offender	.	.	.	2	15	4	21
Failure To Return Lawful Detention/Escape	.	.	.	1	1
Forgery,Counterfeiting,Application Fraud	.	.	.	7	1	8
Fraud	2	2

INDIANA DEPARTMENT OF CORRECTION
ADULT OFFENDERS
by Most Serious Offense

Plainfield Correctional Facility												
Most Serious Offense	Murder	FA	FB	FC	FD	F1	F2	F3	F4	F5	F6	Total
Fraud On A Financial Institution	.	.	.	4	5	.	9
Handgun Violation	.	.	.	1	31	.	32
Intimidation	15	4	19
Kidnapping	.	2	2
Maintaining Common Nuisance	2	2
Murder	62	62
Neglect Of A Dependent	.	.	1	1
Neglect Of A Dependent Resulting in Serious Injury	3	.	.	.	3
Neglect Of Dependent Resulting In Death	.	1	1
Non Support Of Dependent Child	.	.	.	5	1	1	1	8
Operate Vehicle After Suspended For Life	.	.	.	1	28	.	29
Operating Vehicle Intoxicated Resulting in Death	3	.	.	3
Operating Vehicle Intoxicated Resulting in Serious Bodily Injury	2	.	2
Operating Vehicle Intoxicated-Prior Conviction	1	1	2
Operating Vehicle With Schedule I,II in Body - Causing Death	1	.	.	1
Operating Vehicle-Habit Traffic Violator	1	1
Opererating Vehicle While Intoxicated - Prior Conviction	4	4
Pharmacy Robbery	1	.	.	1
Possession Of A Controlled Substance	.	.	.	1	1
Possession Of Cocaine Or Narcotic Drug	.	3	5	1	.	.	.	5	3	12	6	35
Possession Of Dangerous Device	2	.	.	2
Possession Of Methamphetamine	.	1	3	1	1	.	.	14	15	14	12	61
Possession Of Syringes Or Needles	8	8
Possession Or Use Of Legend Drug	1	.	1
Prisoner Poss. Dangerous Device/Material	.	.	1	1
Promoting Prostitution	1	.	1
Rape	.	5	2	7
Reckless Homicide	2	.	2
Residential Entry	2	2
Resisting Law Enforcement	2	.	.	1	.	.	4	7
Robbery	.	7	49	4	.	.	2	56	.	17	.	135
Sexual Misconduct With A Minor	.	1	1	2	1	.	5
Stalking	.	.	1	6	1	8

INDIANA DEPARTMENT OF CORRECTION
ADULT OFFENDERS
by Most Serious Offense

Plainfield Correctional Facility												
Most Serious Offense	Murder	FA	FB	FC	FD	F1	F2	F3	F4	F5	F6	Total
Strangulation	3	3
Theft,Receiving Stolen Property	4	4	16	24
Trafficking With An Inmate	2	.	2
Unlawful Firearm Poss By Serious Felon	.	.	17	65	.	.	82
Voluntary Manslaughter	.	13	2	.	.	.	2	17
Total	62	141	322	57	12	0	47	154	223	373	109	1500

INDIANA DEPARTMENT OF CORRECTION
ADULT OFFENDERS
by Most Serious Offense

Putnamville Correctional Facility												
Most Serious Offense	Murder	FA	FB	FC	FD	F1	F2	F3	F4	F5	F6	Total
Accident Fail To Stop Resulting in Serious Injury or Death	2	.	2
Aggravated Battery	.	.	9	29	.	.	.	38
Aiding Inducing/Causing An Offense	.	2	4	.	.	.	3	1	1	3	.	14
Arson	.	.	5	1	10	.	.	16
Assisting A Criminal	1	.	1
Attempt To Commit Felony	.	12	4	1	.	.	.	10	1	7	1	36
Auto Theft, Receiving Stolen Auto Parts	.	.	.	1	1	10	12
Battery	.	.	2	4	.	.	.	3	.	78	8	95
Battery To A Child Causing Death	.	1	1
Bribery	1	.	1
Burglary	.	14	106	21	.	.	9	5	133	92	.	380
Carjacking	.	.	5	5
Carrying Handgun Without License	.	.	.	1	1
Child Exploitation	1	.	1
Child Molesting	.	2	7	1	.	.	.	1	.	.	.	11
Conspiracy	.	6	10	.	.	.	5	3	6	5	.	35
Contributing To The Delinquency Of Minor	1	1
Controlled Substance Registration	.	.	.	1	2	3
Conversion	1	.	1
Corrupt Business Influence	.	.	.	1	3	.	4
Criminal Confinement	.	.	11	1	.	.	.	11	.	11	1	35
Criminal Deviate Conduct	.	1	1
Criminal Recklessness	.	.	.	3	1	3	3	10
Dealing In Cocaine Or Narcotic Drug	.	22	73	.	.	.	36	21	31	26	.	209
Dealing In Marijuana, Hash, or Hash Oil	.	.	.	1	3	.	4
Dealing In Methamphetamine	.	7	40	.	.	.	26	38	54	36	.	201
Dealing In Schedule I, II, or III Controlled Substance	.	3	33	.	.	.	1	.	3	2	.	42
Dealing In Schedule IV Controlled Substance	.	.	.	1	.	.	.	1	1	.	.	3
Dealing Possessing Look-Alike Substance	1	3	4
Disarming A Law Enforcement Officer	1	.	1
Domestic Battery	29	7	36
Escape	20	26	46
Exploitation Of Endangered Adult	1	1
Fail To Return To Accident Resulting in Serious Injury	3	.	.	.	3
Fail To Stop After Accident - Operating Vehicle Intoxicated	.	.	2	2

INDIANA DEPARTMENT OF CORRECTION
ADULT OFFENDERS
by Most Serious Offense

Putnamville Correctional Facility												
Most Serious Offense	Murder	FA	FB	FC	FD	F1	F2	F3	F4	F5	F6	Total
Failure To Register As A Sex Offender	34	2	36
Failure To Return Lawful Detention/Escape	.	.	.	1	1
Firearm Within 1 Mile School Property Without License	.	.	.	1	1
Forgery,Counterfeiting,Application Fraud	.	.	.	10	5	15
Fraud	4	4
Fraud On A Financial Institution	.	.	.	3	12	.	15
Handgun Violation	34	.	34
Human Sexual Trafficking	.	.	1	1
Identity Deception	1	1
Intimidation	.	.	.	3	21	1	25
Invasion Of Privacy	3	3
Involuntary Manslaughter	1	.	1
Kidnapping	.	4	3	.	3	1	11
Legend Drug Deception	1	1
Maintaining Common Nuisance	4	4
Manufacture Methamphetamine	1	.	.	1
Murder	47	47
Neglect Of A Dependent	.	.	.	1	4	.	5
Neglect Of A Dependent Resulting in Serious Injury	4	.	.	.	4
Neglect Of Dependent Resulting In Death	.	2	2
Non Support Of Dependent Child	.	.	.	7	1	1	2	11
Obstruction Of Justice	2	2	4
Operate Vehicle After Suspended For Life	.	.	.	5	52	.	57
Operating Vehicle Intoxicated	2	.	2
Operating Vehicle Intoxicated Resulting in Death	.	.	6	8	7	.	21
Operating Vehicle Intoxicated Resulting in Serious Bodily Injury	.	.	.	1	1	3	.	5
Operating Vehicle Intoxicated-Prior Conviction	4	4
Operating Vehicle While Intoxicated - Endangering Person	1	1
Operating Vehicle-Habit Traffic Violator	1	1
Opererating Vehicle While Intoxicated - Prior Conviction	9	9
Possess Chemical Reagents Or Precursors	.	.	.	2	2
Possess Of Precursors	1	1
Possession Of A Controlled Substance	.	.	.	1	1	2
Possession Of Cocaine Or Narcotic Drug	.	.	4	1	.	.	.	3	10	20	6	44
Possession Of Marijuana, Hash, Hash Oil	1	1

INDIANA DEPARTMENT OF CORRECTION
ADULT OFFENDERS
by Most Serious Offense

Putnamville Correctional Facility												
Most Serious Offense	Murder	FA	FB	FC	FD	F1	F2	F3	F4	F5	F6	Total
Possession Of Methamphetamine	.	1	8	15	14	36	26	100
Possession Of Syringes Or Needles	2	8	10
Possession Or Use Of Legend Drug	3	3
Prisoner Poss. Dangerous Device/Material	.	.	1	1
Promoting Prostitution	2	.	2
Rape	.	2	2
Reckless Homicide	.	.	.	1	3	.	4
Residential Entry	3	3
Resisting Law Enforcement	1	.	2	5	8
Robbery	.	11	74	6	.	.	5	82	.	19	.	197
Sale Of Unregistered Security	.	.	.	1	1
Sex Predator Unlawful Job Near Children	1	.	1
Sexual Battery	2	2
Sexual Misconduct With A Minor	1	1	.	2
Stalking	1	.	.	.	2	6	.	9
Strangulation	2	2
Synthetic Identity Deception	1	1
Terroristic Mischief	1	.	1
Theft,Receiving Stolen Property	4	3	18	25
Trafficking With An Inmate	.	.	.	1	7	.	8
Unlawful Firearm Poss By Serious Felon	.	.	34	92	.	.	126
Voluntary Manslaughter	.	16	6	.	.	.	4	26
Total	47	106	445	82	14	0	89	235	368	606	175	2167

INDIANA DEPARTMENT OF CORRECTION
ADULT OFFENDERS
by Most Serious Offense

Reception Diagnostic Center												
Most Serious Offense	Murder	FA	FB	FC	FD	F1	F2	F3	F4	F5	F6	Total
Aggravated Battery	.	.	2	.	.	1	.	5	.	.	.	8
Aiding Inducing/Causing An Offense	1	.	.	2	.	3
Arson	.	.	1	3	.	.	4
Attempt To Commit Felony	.	.	2	.	.	2	1	1	1	3	1	11
Auto Theft, Receiving Stolen Auto Parts	1	1	2
Battery	.	.	1	3	1	31	.	36
Bribery	1	.	1
Burglary	.	.	20	1	.	.	3	.	23	25	.	72
Check Deception	1	1
Check Fraud	1	1
Child Exploitation	.	.	.	1	1	.	2
Child Molesting	.	8	3	3	.	9	.	2	13	.	.	38
Child Seduction	1	.	1
Child Solicitation	1	2	.	3
Conspiracy	.	.	1	.	.	.	1	2	.	.	.	4
Corrupt Business Influence	2	.	2
Criminal Confinement	.	.	2	2	1	.	1	1	.	10	.	17
Criminal Deviate Conduct	.	1	2	3
Criminal Recklessness	4	.	4
Dangerous Control Of A Handgun	1	.	1
Dealing In Cocaine Or Narcotic Drug	.	3	9	.	.	.	9	14	7	4	.	46
Dealing In Marijuana, Hash, or Hash Oil	1	1
Dealing In Methamphetamine	.	1	7	.	.	.	12	6	17	15	.	58
Dealing In Schedule I, II, or III Controlled Substance	.	1	3	1	.	.	5
Dealing In Schedule IV Controlled Substance	.	.	.	1	.	.	.	1	1	.	.	3
Dealing Possessing Look-Alike Substance	1	.	1
Domestic Battery	14	6	20
Escape	1	1	4	6
Failure To Register As A Sex Offender	.	.	.	1	5	.	6
Forgery,Counterfeiting,Application Fraud	.	.	.	7	2	9
Fraud	1	1
Fraud On A Financial Institution	4	.	4
Habitual Offender	1	.	1
Handgun Violation	22	.	22
Home Improvement Fraud Offenses	.	.	.	1	1
Identity Deception	1	1
Intimidation	8	2	10
Kidnapping	.	1	1	.	.	.	2

INDIANA DEPARTMENT OF CORRECTION
ADULT OFFENDERS
by Most Serious Offense

Reception Diagnostic Center												
Most Serious Offense	Murder	FA	FB	FC	FD	F1	F2	F3	F4	F5	F6	Total
Murder	6	6
Neglect Of A Dependent	2	1	3
Neglect Of A Dependent Resulting in Serious Injury	1	.	.	.	1
Non Support Of Dependent Child	.	.	.	5	5
Obliterating Handgun I.D.	1	.	1
Obstruction Of Justice	1	.	1
Operate Vehicle After Suspended For Life	16	.	16
Operating Vehicle Intoxicated Resulting in Death	1	.	.	1
Operating Vehicle Intoxicated-Prior Conviction	3	3
Operating Vehicle-Habit Traffic Violator	2	2
Opererating Vehicle While Intoxicated - Prior Conviction	3	3
Possess Destructive Device Or Explosive	1	.	1
Possession Of Cocaine Or Narcotic Drug	.	.	1	.	2	.	.	.	1	9	8	21
Possession Of Marijuana, Hash, Hash Oil	1	1
Possession Of Methamphetamine	.	.	1	3	7	28	9	48
Possession Of Syringes Or Needles	1	5	6
Prisoner Poss. Dangerous Device/Material	.	.	1	1
Rape	.	1	2	.	.	1	.	1	.	.	.	5
Reckless Homicide	1	.	1
Resisting Law Enforcement	1	1	2
Robbery	.	.	7	1	.	.	.	18	.	14	.	40
Sexual Misconduct With A Minor	.	.	1	1	1	.	.	.	4	5	.	12
Stalking	1	4	.	5
Strangulation	1	1	2
Theft,Receiving Stolen Property	2	3	14	19
Trafficking With An Inmate	.	.	.	2	3	.	5
Unlawful Firearm Poss By Serious Felon	.	.	3	22	.	.	25
Voluntary Manslaughter	3	3
Welfare Fraud	1	1
Total	6	16	69	29	11	13	31	56	105	248	67	651

INDIANA DEPARTMENT OF CORRECTION
ADULT OFFENDERS
by Most Serious Offense

Rockville Correctional Facility												
Most Serious Offense	Murder	FA	FB	FC	FD	F1	F2	F3	F4	F5	F6	Total
Aggravated Battery	.	.	3	.	.	1	.	11	.	.	.	15
Aiding Inducing/Causing An Offense	.	3	6	2	.	2	6	5	5	4	.	33
Arson	.	1	1	.	.	.	1	1	3	.	.	7
Assisting A Criminal	.	.	.	1	1	.	2
Attempt To Commit Felony	.	9	1	1	.	3	7	3	1	7	.	32
Auto Theft, Receiving Stolen Auto Parts	4	4
Battery	.	1	2	5	.	46	2	56
Burglary	.	3	19	4	.	1	4	3	40	24	.	98
Carjacking	.	.	2	2
Check Fraud	1	1
Child Molesting	.	25	8	1	.	7	.	5	3	.	.	49
Child Seduction	1	.	1
Child Solicitation	4	.	4
Conspiracy	.	8	6	.	.	1	9	6	3	6	.	39
Controlled Substance Registration	1	.	1
Corrupt Business Influence	.	.	.	1	4	.	5
Criminal Confinement	1	4	.	1	.	6
Criminal Deviate Conduct	.	3	1	4
Criminal Recklessness	1	.	1
Dealing In Cocaine Or Narcotic Drug	.	13	16	.	.	.	11	13	18	16	.	87
Dealing In Marijuana, Hash, or Hash Oil	1	1
Dealing In Methamphetamine	.	14	15	.	.	.	53	29	35	29	.	175
Dealing In Schedule I, II, or III Controlled Substance	.	6	21	.	.	.	1	5	5	5	.	43
Dealing In Schedule IV Controlled Substance	.	.	2	1	3
Dealing Possessing Look-Alike Substance	1	1	.	2
Domestic Battery	4	1	5
Escape	10	14	24
Fail To Return To Accident Resulting in Serious Injury	1	.	.	.	1
Fail To Stop At An Accident/Sbi/Prior	1	1
Failure To Appear	1	1
Failure To Register As A Sex Offender	4	.	4
Failure To Return Lawful Detention/Escape	.	.	.	1	1
Firearm Within 1 Mile School Property Without License	.	.	.	1	1
Forgery,Counterfeiting,Application Fraud	.	.	.	9	3	12

INDIANA DEPARTMENT OF CORRECTION
ADULT OFFENDERS
by Most Serious Offense

Rockville Correctional Facility												
Most Serious Offense	Murder	FA	FB	FC	FD	F1	F2	F3	F4	F5	F6	Total
Fraud	3	3
Fraud On A Financial Institution	8	.	8
Habitual Offender	2	2
Handgun Violation	10	.	10
Human Sexual Trafficking	.	.	2	1	.	.	.	3
Identity Deception	3	3
Incest	.	.	1	1	1	.	3
Inmate Fraud	1	.	1
Insurance Fraud	1	.	1
Intimidation	1	.	1
Kidnapping	1	.	1	.	2
Maintaining Common Nuisance	1	4	5
Murder	49	49
Neglect Of A Dependent	.	.	5	3	5	.	13
Neglect Of A Dependent Resulting in Serious Injury	19	.	.	.	19
Neglect Of Dependent Resulting In Death	.	10	.	.	.	8	18
Non Support Of Dependent Child	1	.	1
Operate Vehicle After Suspended For Life	.	.	.	1	4	.	5
Operating Vehicle Intoxicated Resulting in Death	.	.	1	3	.	.	4
Operating Vehicle Intoxicated Resulting in Serious Bodily Injury	1	.	1
Operating Vehicle Intoxicated-Prior Conviction	1	1
Operating Vehicle While Intoxicated - Prior Conviction	2	2
Operating Vehicle-Habit Traffic Violator	1	1
Opererating Vehicle While Intoxicated - Prior Conviction	3	3
Pharmacy Robbery	1	.	.	1
Possess of Precursors	1	.	1
Possession Of A Controlled Substance	.	.	.	1	1	2
Possession Of Cocaine Or Narcotic Drug	.	.	1	2	3	10	11	27
Possession Of Methamphetamine	.	.	2	1	1	.	.	12	16	25	31	88
Possession Of Syringes Or Needles	4	13	17
Possession Or Use Of Legend Drug	2	1	3
Promoting Prostitution	.	.	.	1	1
Rape	2	.	.	.	2
Reckless Homicide	2	.	2
Residential Entry	3	3

INDIANA DEPARTMENT OF CORRECTION
ADULT OFFENDERS
by Most Serious Offense

Rockville Correctional Facility												
Most Serious Offense	Murder	FA	FB	FC	FD	F1	F2	F3	F4	F5	F6	Total
Resisting Law Enforcement	1	.	.	1	2
Robbery	.	3	9	2	.	.	6	34	.	9	.	63
Sexual Misconduct With A Minor	.	.	4	12	2	.	18
Stalking	1	.	1
Theft,Receiving Stolen Property	1	6	19	26
Trafficking With An Inmate	14	.	14
Unlawful Firearm Poss By Serious Felon	.	.	2	4	.	.	6
Voluntary Manslaughter	.	8	1	.	.	.	11	20
Welfare Fraud	.	.	.	5	5
Total	49	107	129	36	7	23	112	163	153	279	124	1182

INDIANA DEPARTMENT OF CORRECTION
ADULT OFFENDERS
by Most Serious Offense

South Bend Community Re-Entry Center												
Most Serious Offense	Murder	FA	FB	FC	FD	F1	F2	F3	F4	F5	F6	Total
Aggravated Battery	.	.	2	2	.	.	.	4
Aiding Inducing/Causing An Offense	.	.	4	1	3	.	8
Attempt To Commit Felony	.	1	2	1	.	.	.	4
Auto Theft, Receiving Stolen Auto Parts	2	2
Battery	.	.	1	1	.	2	.	4
Battery To A Child Causing Death	.	1	1
Burglary	.	1	7	3	10	2	.	23
Conspiracy	.	3	1	1	.	5
Criminal Confinement	1	.	1
Dealing In Cocaine Or Narcotic Drug	.	10	7	2	2	6	.	27
Dealing In Marijuana, Hash, or Hash Oil	1	.	1
Dealing In Methamphetamine	.	2	6	5	5	.	18
Dealing In Schedule I, II, or III Controlled Substance	.	2	2
Dealing Possessing Look-Alike Substance	2	.	2
Domestic Battery	1	.	1
Fail To Return To Accident Resulting in Serious Injury	1	.	.	.	1
Forgery,Counterfeiting,Application Fraud	.	.	.	1	1
Handgun Violation	3	.	3
Intimidation	1	.	1
Murder	11	11
Non Support Of Dependent Child	.	.	.	2	1	3
Operate Vehicle After Suspended For Life	9	.	9
Operating Vehicle Intoxicated Resulting in Serious Bodily Injury	1	1
Opererating Vehicle While Intoxicated - Prior Conviction	1	1
Possession Of A Controlled Substance	1	1
Possession Of Cocaine Or Narcotic Drug	.	2	1	.	.	3
Possession Of Methamphetamine	2	1	3
Reckless Homicide	1	.	1
Resisting Law Enforcement	1	1
Robbery	.	1	3	1	.	.	.	3	.	5	.	13
Synthetic Identity Deception	2	2
Theft,Receiving Stolen Property	2	2
Unlawful Firearm Poss By Serious Felon	.	.	2	1	.	.	3
Voluntary Manslaughter	.	4	1	5
Total	11	27	36	7	2	0	0	10	20	45	10	168

INDIANA DEPARTMENT OF CORRECTION
ADULT OFFENDERS
by Most Serious Offense

Wabash Valley Correctional Facility													
Most Serious Offense	Murder	FA	FB	FC	FD	F1	F2	F3	F4	F5	F6	HO*	Total
Accident Fail To Stop Resulting in Serious Injury or Death	1	.	.	1
Aggravated Battery	.	.	16	.	.	3	.	16	35
Aiding Inducing/Causing An Offense	.	11	1	.	.	2	.	2	1	1	.	.	18
Arson	.	1	7	4	.	.	.	12
Attempt To Commit Felony	.	84	7	.	.	15	2	4	2	3	.	.	117
Auto Theft, Receiving Stolen Auto Parts	1	2	.	3
Battery	.	5	2	2	.	.	2	.	.	31	2	.	44
Battery By Bodily Waste	1	1
Burglary	.	40	60	9	.	7	9	4	47	19	.	.	195
Carjacking	.	.	1	1
Child Exploitation	1	.	.	.	1
Child Molesting	.	241	17	.	.	58	.	.	1	.	.	.	317
Child Solicitation	1	.	.	1
Conspiracy	.	7	3	1	.	2	3	3	1	.	.	.	20
Criminal Confinement	.	.	12	3	15
Criminal Deviate Conduct	.	19	6	25
Criminal Recklessness	2	.	.	2
Dealing In Cocaine Or Narcotic Drug	.	48	24	.	.	.	10	5	12	8	.	.	107
Dealing In Marijuana, Hash, or Hash Oil	3	1	.	4
Dealing In Methamphetamine	.	14	18	.	.	.	19	9	22	18	.	.	100
Dealing In Schedule I, II, or III Controlled Substance	.	4	9	.	.	.	2	1	1	1	.	.	18
Dealing Possessing Look-Alike Substance	1	.	.	1
Domestic Battery	3	1	.	4
Driving Whl/Suspended Resulting In Death	1	.	.	1
Escape	1	1	.	.	2
Failure To Register As A Sex Offender	2	.	.	2
Failure To Return Lawful Detention/Escape	.	.	1	1	2
Firearm Within 1 Mile School Property Without License	.	.	.	2	2
Forgery,Counterfeiting,Application Fraud	.	.	.	2	1	.	3
Fraud On A Financial Institution	3	.	.	3
Habitual Substance Offender	1	1
Handgun Violation	12	.	.	12
Incest	1	.	.	.	1
Intimidation	5	1	.	6
Kidnapping	.	20	1	21
Maintaining Common Nuisance	1	.	1

INDIANA DEPARTMENT OF CORRECTION
ADULT OFFENDERS
by Most Serious Offense

Wabash Valley Correctional Facility													
Most Serious Offense	Murder	FA	FB	FC	FD	F1	F2	F3	F4	F5	F6	HO*	Total
Manufacture Methamphetamine	1	.	.	.	1
Murder	579	579
Neglect Of A Dependent Resulting in Serious Injury	4	4
Neglect Of Dependent Resulting In Death	.	8	8
Obstruction Of Justice	1	.	.	1
Operate Vehicle After Suspended For Life	6	.	.	6
Operating Vehicle Intoxicated	1	.	.	1
Operating Vehicle Intoxicated Resulting in Death	.	.	4	4	2	.	.	10
Operating Vehicle Intoxicated Resulting in Serious Bodily Injury	1	.	1
Opererating Vehicle While Intoxicated - Prior Conviction	4	.	4
Possess Destructive Device Or Explosive	1	1
Possession Of Cocaine Or Narcotic Drug	.	3	1	1	1	5	3	.	14
Possession Of Dangerous Device	1	1	.	.	2
Possession Of Methamphetamine	.	.	2	2	3	9	5	.	21
Prisoner Poss. Dangerous Device/Material	.	.	1	1
Rape	.	49	7	.	.	12	.	5	73
Reckless Homicide	.	.	.	1	1	.	.	2
Removing, Damaging, Or Altering a VIN	.	.	.	1	1
Resisting Law Enforcement	.	.	1	2	.	3
Robbery	.	43	62	3	.	.	4	39	.	15	.	.	166
Sexual Misconduct With A Minor	.	.	9	1	.	.	.	10
Theft,Receiving Stolen Property	1	1	6	.	8
Trafficking With An Inmate	1	.	.	1
Unlawful Firearm Poss By Serious Felon	.	.	16	17	.	.	.	33
Voluntary Manslaughter	.	38	2	.	.	.	9	49
Total	579	635	289	22	2	99	62	98	122	160	30	1	2099

INDIANA DEPARTMENT OF CORRECTION
ADULT OFFENDERS
by Most Serious Offense

Westville Correctional Facility													
Most Serious Offense	Murder	FA	FB	FC	FD	F1	F2	F3	F4	F5	F6	HO*	Total
Accident Fail To Stop Resulting in Serious Injury or Death	3	.	.	3
Aggravated Battery	.	.	17	32	49
Aiding Inducing/Causing An Offense	.	2	9	1	.	.	.	11	7	13	2	.	45
Arson	.	2	7	11	.	.	.	20
Assisting A Criminal	.	.	.	3	2	.	.	5
Attempt To Commit Felony	.	37	10	3	.	1	4	12	2	15	1	.	85
Auto Theft, Receiving Stolen Auto Parts	.	.	.	4	1	6	5	.	16
Battery	.	2	6	9	.	.	.	11	.	108	11	.	147
Battery To A Child Causing Death	.	1	1
Bribery	1	.	.	1
Burglary	.	12	123	27	.	.	9	6	163	103	.	.	443
Carjacking	.	.	2	2
Carrying Handgun Without License	.	.	.	3	3
Child Molesting	.	4	4	1	.	.	.	1	1	.	.	.	11
Child Possession of Firearm	1	.	.	1
Conspiracy	.	5	2	2	.	.	.	5	4	3	.	.	21
Corrupt Business Influence	.	.	.	3	13	.	.	16
Criminal Confinement	.	.	11	2	.	.	.	10	.	19	1	.	43
Criminal Deviate Conduct	.	2	2	4
Criminal Recklessness	.	.	.	1	11	2	.	14
Deal Sub Represented To Be Controlled Sub	1	.	1
Dealing In Cocaine Or Narcotic Drug	.	93	88	.	.	.	14	36	45	47	.	.	323
Dealing In Marijuana, Hash, or Hash Oil	5	.	.	5
Dealing In Methamphetamine	.	21	67	.	.	.	24	34	65	55	.	.	266
Dealing In Schedule I, II, or III Controlled Substance	.	7	23	.	.	.	2	2	1	2	.	.	37
Dealing In Schedule IV Controlled Substance	.	.	1	2	.	1	.	.	4
Dealing Possessing Look-Alike Substance	.	.	.	1	4	7	.	12
Disarming A Law Enforcement Officer	7	.	.	7
Domestic Battery	49	12	.	61
Domestic Battery with Serious Bodily Injury Under Age 14	1	1
Escape	22	18	.	40
Fail To Return To Accident Resulting in Serious Injury	4	4
Fail To Stop After Accident - Operating Vehicle Intoxicated	.	.	1	1
Failure Of Sex Offender To Possess Id	1	1
Failure To Register As A Sex Offender	.	.	.	1	51	.	.	52

INDIANA DEPARTMENT OF CORRECTION
ADULT OFFENDERS
by Most Serious Offense

Westville Correctional Facility													
Most Serious Offense	Murder	FA	FB	FC	FD	F1	F2	F3	F4	F5	F6	HO*	Total
Failure To Return Lawful Detention/Escape	.	.	1	1
Firearm Within 1 Mile School Property Without License	.	.	.	3	3
Forgery,Counterfeiting,Application Fraud	.	.	.	16	4	.	20
Fraud	3	.	3
Fraud On A Financial Institution	.	.	.	5	13	.	.	18
Habitual Substance Offender	3	0
Handgun Violation	58	.	.	58
Home Improvement Fraud Offenses	1	1	.	.	2
Intimidation	.	.	.	1	25	5	.	31
Invasion Of Privacy	4	.	4
Involuntary Manslaughter	1	.	.	1
Kidnapping	.	2	2	.	1	.	.	5
Maintaining Common Nuisance	3	.	3
Manufacture Methamphetamine	1	1
Manufacture Methamphetamine	4	.	.	.	4
Murder	84	84
Neglect Of A Dependent	.	.	3	1	5	.	.	9
Neglect Of A Dependent Resulting in Serious Injury	5	5
Neglect Of Dependent Resulting In Death	.	3	3
Non Support Of Dependent Child	.	.	.	12	2	2	3	.	19
Obliterating Handgun I.D.	2	.	.	2
Obstruction Of Justice	1	2	.	.	3
Operate Vehicle After Suspended For Life	.	.	.	9	66	.	.	75
Operating Vehicle Intoxicated Resulting in Death	.	.	3	14	2	.	.	19
Operating Vehicle Intoxicated Resulting in Serious Bodily Injury	4	.	.	4
Operating Vehicle Intoxicated-Prior Conviction	6	.	6
Operating Vehicle-Habit Traffic Violator	.	.	.	1	1	11	.	13
Opererating Vehicle While Intoxicated - Prior Conviction	14	.	14
Possess Chemical Reagents Or Precursors	.	.	.	1	1
Possession Of A Controlled Substance	.	.	.	1	3	1	.	5
Possession Of Cocaine Or Narcotic Drug	.	8	6	6	1	.	.	8	13	15	16	.	73
Possession Of Dangerous Device	1	.	.	.	1
Possession Of Methamphetamine	.	1	6	1	1	.	.	12	19	64	21	.	125
Possession Of Syringes Or Needles	7	.	7
Possession Or Use Of Legend Drug	1	.	1

INDIANA DEPARTMENT OF CORRECTION
ADULT OFFENDERS
by Most Serious Offense

Westville Correctional Facility													
Most Serious Offense	Murder	FA	FB	FC	FD	F1	F2	F3	F4	F5	F6	HO*	Total
Prisoner Poss. Dangerous Device/Material	.	.	4	4
Promoting Prostitution	2	.	.	2
Rape	.	4	1	1	6
Reckless Homicide	.	.	.	1	4	.	.	5
Residential Entry	5	.	5
Resisting Law Enforcement	1	.	4	15	.	20
Robbery	.	26	96	14	.	.	4	98	.	63	.	.	301
Sale Of Unregistered Security	.	.	.	1	1
Sexual Battery	1	.	.	.	1
Sexual Misconduct With A Minor	.	.	2	1	2	.	.	.	5
Stalking	.	.	1	1	1	6	.	.	9
Strangulation	1	.	1
Theft,Receiving Stolen Property	.	.	.	1	6	1	30	.	38
Trafficking With An Inmate	.	.	.	1	3	.	.	4
Unlawful Firearm Poss By Serious Felon	.	.	23	63	.	.	.	86
Voluntary Manslaughter	.	34	6	.	.	.	1	41