

Indiana Department of Correction
August 2019

Offender Population Report

Prepared for the Justice Reinvestment Advisory Council
and State Budget Committee

Robert Carter, Commissioner



TABLE OF CONTENTS

DOC Monthly Admissions - Adult Offenders	1
Current Adult Offenders, by County of Commit	4
Population Trend Graphs	6
DOC Adult Offenders – Facility Breakdowns, by highest Felony Classification	8
DOC Adult Offenders – Most Serious Offense, Alphabetical by highest Felony Classification	10
DOC Adult Offenders – Most Serious Offense, Ranked by highest Felony Classification	14
Appendix – DOC Facilities – Felony Breakdowns	18



INDIANA DEPARTMENT OF CORRECTION

July 2019 Admissions

by Most Serious Offense

Most Serious Offense	F1	F2	F3	F4	F5	F6	FA	FB	FC	FD	Murder	N
Accident - Fail To Stop - Death	1	1
Aggravated Battery	.	.	12	1	.	.	.	13
Aiding Inducing/Causing An Offense	.	.	.	1	4	.	.	1	.	.	.	6
Arson	.	.	.	6	.	.	.	2	.	.	.	8
Arson - Pecuniary Loss Gt \$250 Lt \$5,000	1	1
Assisting A Criminal	1	1
Attempt To Commit Felony	3	1	.	.	5	.	2	2	.	.	.	13
Auto Theft, Receiving Stolen Auto Parts	1	4	5
Battery	.	.	1	.	39	3	.	.	3	1	.	47
Burglary	.	1	3	37	31	.	.	25	9	.	.	106
Carrying Handgun Without License	2	.	.	2
Check Fraud	1	1
Child Molesting	12	1	5	14	.	.	3	6	9	.	.	50
Child Solicitation	2	2
Conspiracy	.	1	2	1	2	1	.	1	.	.	.	8
Criminal Confinement	.	.	5	.	8	13
Criminal Deviate Conduct	1	.	.	.	1
Criminal Recklessness	2	1	3
Dangerous Control Of Firearm By A Child	1	1
Dealing In Cocaine Or Narcotic Drug	.	7	9	9	13	.	6	14	.	.	.	58
Dealing In Marijuana, Hash, or Hash Oil	4	2	6
Dealing In Methamphetamine	.	19	17	28	19	.	1	19	.	.	.	103
Dealing In Schedule IV Controlled Substance	1	.	.	.	1
Dealing In a Schedule I, II, or III Controlled Substance	.	.	2	.	2	.	.	6	.	.	.	10
Dealing Possessing Look-Alike Substance	4	1	5
Defacing Vehicle Identification Number	1	1
Disarming A Law Enforcement Officer	1	1
Domestic Battery	5	5
Domestic Battery Resulting in Death Under 14	.	1	1
Domestic Battery With Previous Battery Conviction	14	14
Escape	4	10	14
Fail To Stop At An Accident/Sbi/Prior	.	.	1	1
Failure To Appear	1	1
Failure To Register As A Sex Offender	18	18
Firearm Within 1 Mile School Property Without License	1	.	.	1
Forgery,Counterfeiting,Application Fraud	3	.	.	5	.	.	8

Note: 3 current admissions have missing sentencing data due to processing or because of safekeeper status.

INDIANA DEPARTMENT OF CORRECTION

July 2019 Admissions

by Most Serious Offense

Most Serious Offense	F1	F2	F3	F4	F5	F6	FA	FB	FC	FD	Murder	N
Fraud	3	3
Fraud On A Financial Institution	5	5
Handgun Violation (Felony Within 15 Yrs)	29	29
Identity Deception	1	.	.	.	1	.	2
Incest	1	.	.	1
Intimidation	7	3	.	.	2	2	.	14
Maintaining Common Nuisance	5	.	.	.	1	.	6
Manufacture Methamphetamine	.	.	.	1	1
Murder	13	13
Neglect Of A Dependent	3	2	5
Neglect Of A Dependent Resulting in Serious Injury	.	.	2	2
Neglect Of Dependent Resulting In Death	1	1
Non Support Of Dependent Child	2	.	.	.	7	.	.	9
OPER VEH .15 OR MORE - PRIOR CONVICTION	1	1
Obliterating Handgun I.D.	2	2
Operate Vehicle After Suspended For Life	20	20
Operating Vehicle Intoxicated Resulting in Death	.	.	.	4	2	6
Operating Vehicle Intoxicated Resulting in Serious Bodily Injury	1	1	2
Operating Vehicle While Intoxicated - Endangering Person	1	.	1
Operating Vehicle While Intoxicated - Prior Conviction	5	5
Operating Vehicle-Habit Traffic Violator	2	.	.	.	1	.	3
Pharmacy Robbery	.	.	.	1	1
Possess Chemical Reagents Or Precursors	1	.	.	1
Possess Of Precursors	1	.	.	.	1	.	2
Possession Of Cocaine Or Narcotic Drug	.	.	1	2	8	7	.	.	.	4	.	22
Possession Of Dangerous Device	1	1
Possession Of Marijuana, Hash, Hash Oil	1	1
Possession Of Methamphetamine	.	.	7	7	21	33	.	2	2	.	.	72
Possession Of Syringes Or Needles	2	9	11
Possession Or Use Of Legend Drug	1	1
Promoting Prostitution	1	.	.	1
Promoting Prostitution Under Age 18	1	.	.	.	1
Rape	1	.	5	.	.	.	1	2	.	.	.	9
Reckless Homicide	1	1
Residential Entry	6	6
Resisting Law Enforcement	8	.	.	.	2	.	10

Note: 3 current admissions have missing sentencing data due to processing or because of safekeeper status.

INDIANA DEPARTMENT OF CORRECTION

July 2019 Admissions

by Most Serious Offense

Most Serious Offense	F1	F2	F3	F4	F5	F6	FA	FB	FC	FD	Murder	N
Robbery	.	2	36	.	15	.	.	14	5	.	.	72
Sexual Battery	1	.	1
Sexual Misconduct With A Minor	1	.	.	4	7	.	.	7	2	.	.	21
Stalking	1	1
Strangulation	2	2
Theft,Receiving Stolen Property	2	16	.	.	.	4	.	22
Trafficking With An Inmate	2	.	.	2
Unlawful Firearm Poss By Serious Felon	.	.	.	25	.	.	.	8	.	.	.	33
Vicarious Sexual Gratification	1	1
Voluntary Manslaughter	2	1	.	.	.	3
Welfare Fraud	1	.	.	1
	18	33	108	140	307	140	15	114	53	19	13	960

Note: 3 current admissions have missing sentencing data due to processing or because of safekeeper status.

INDIANA DEPARTMENT OF CORRECTION
ADULT OFFENDERS
by County of Commitment
for August 2019
Snapshot date: 08/01/2019

County of Commit	Department of Correction	**Community Corrections Programs	Local Jail Holds		COUNTY TOTALS
			DOC Contract	Felony Level 6 Diversions	
Adams	115	106	0	0	221
Allen	1,606	557	14	112	2,289
Bartholomew	287	153	3	51	494
Benton*	19	0	0	9	28
Blackford	60	35	5	6	106
Boone	141	336	1	15	493
Brown	39	30	0	15	84
Carroll	73	11	1	21	106
Cass	243	102	8	39	392
Clark	225	141	2	19	387
Clay	70	195	2	43	310
Clinton	171	72	4	31	278
Crawford	24	100	0	5	129
Daviess	101	130	2	6	239
Dearborn	391	92	5	35	523
Decatur	218	89	7	16	330
DeKalb	188	88	2	43	321
Delaware	386	695	1	5	1,087
Dubois	107	182	0	6	295
Elkhart	1,486	464	22	46	2,018
Fayette	176	135	4	34	349
Floyd	206	63	2	41	312
Fountain	35	79	1	7	122
Franklin*	77	0	2	10	89
Fulton	85	103	2	12	202
Gibson	133	45	4	23	205
Grant	385	113	4	12	514
Greene	145	35	1	21	202
Hamilton	328	278	5	58	669
Hancock	147	231	1	118	497
Harrison	142	89	2	8	241
Hendricks	254	150	3	53	460
Henry	248	82	0	6	336
Howard	356	315	9	64	744
Huntington	353	31	5	51	440
Jackson	236	69	4	24	333
Jasper	100	49	1	5	155
Jay	172	9	2	30	213
Jefferson	188	748	2	10	948
Jennings	105	47	0	29	181
Johnson	403	167	4	71	645
Knox	56	125	0	3	184
Kosciusko	277	122	7	96	502
LaGrange	61	25	2	24	112
Lake	1,023	336	16	50	1,425
LaPorte	371	292	3	0	666
Lawrence	211	81	0	8	300
Madison	1,312	296	6	12	1,626
Marion	5,408	5,196	29	339	10,972
Marshall	206	119	6	25	356
Martin	45	35	0	5	85
Miami	69	34	5	0	108
Monroe	322	637	3	12	974
Montgomery	181	34	0	18	233
Morgan	207	61	5	52	325
Newton*	47	0	0	6	53
Noble	141	119	3	14	277
Ohio	50	6	0	0	56
Orange	142	3	4	9	158
Owen	61	398	5	15	479
Parke	53	8	2	8	71
Perry	86	95	0	5	186
Pike	55	26	1	6	88
Porter	222	82	2	18	324
Posey	86	37	0	9	132
Pulaski	34	13	0	7	54
Putnam	80	48	2	10	140
Randolph	51	24	0	13	88
Ripley	184	55	5	23	267
Rush	80	81	1	4	166
St Joseph	1,069	81	4	16	1,170

*Counties that are not participating in Community Corrections

** Community Corrections data as of 08/08/19

INDIANA DEPARTMENT OF CORRECTION
ADULT OFFENDERS
by County of Commitment
for August 2019
Snapshot date: 08/01/2019

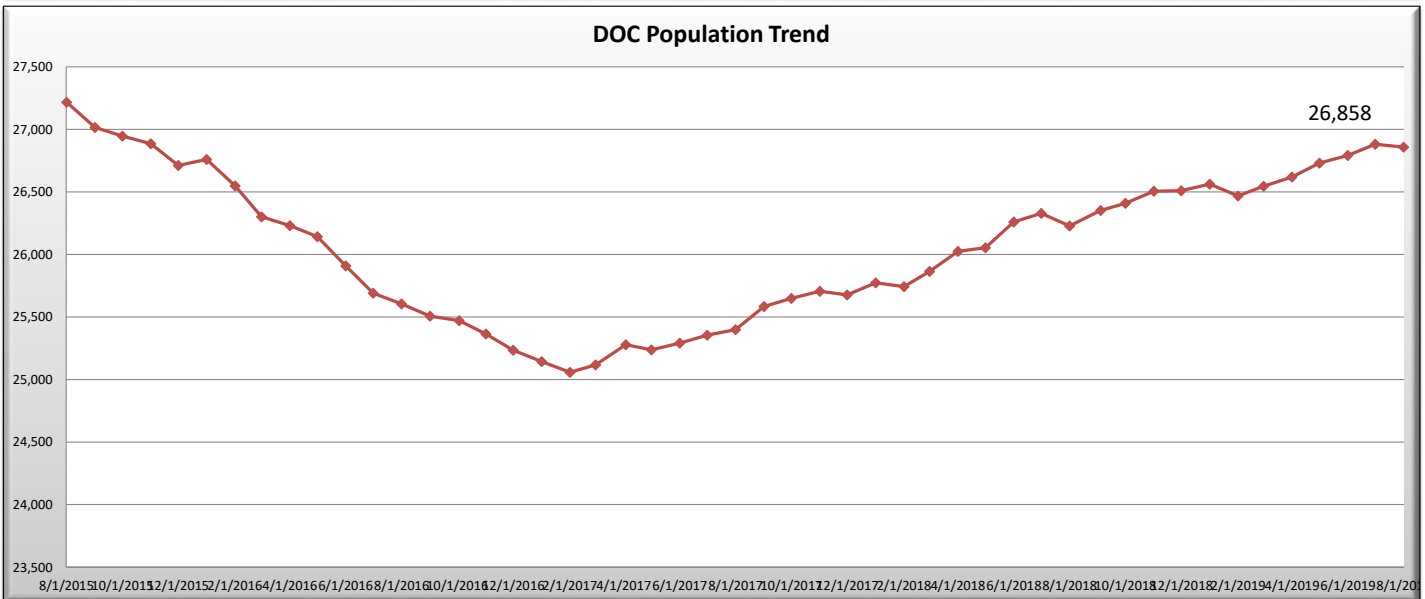
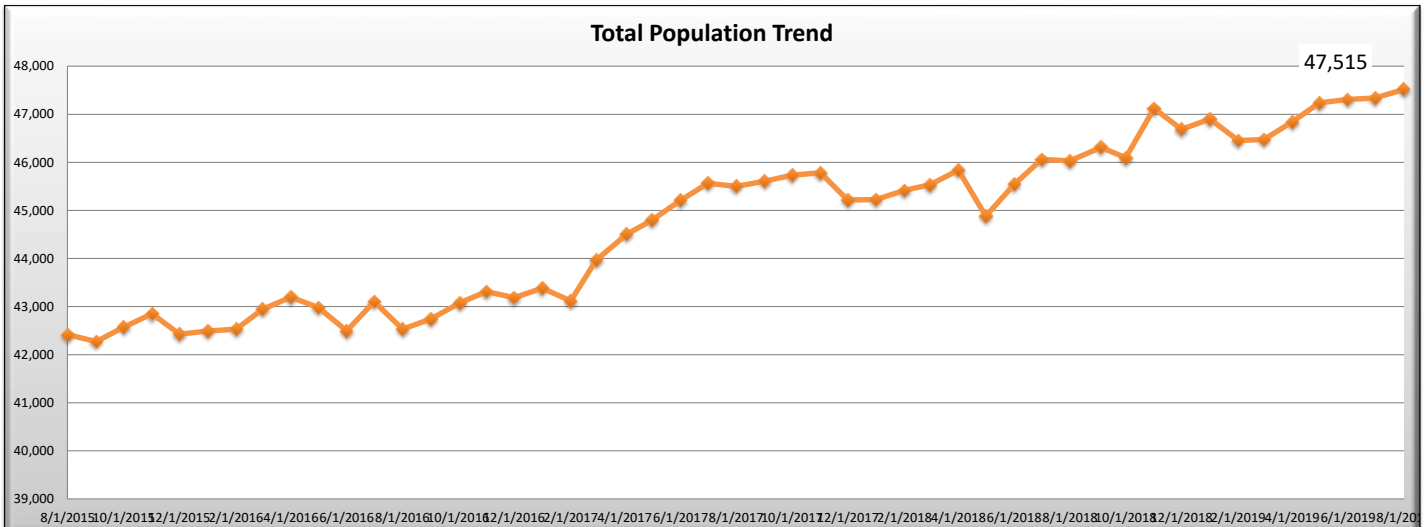
County of Commit	Department of Correction	**Community Corrections Programs	Local Jail Holds		COUNTY TOTALS
			DOC Contract	Felony Level 6 Diversions	
Scott	186	152	3	17	358
Shelby	295	76	5	5	381
Spencer	43	254	4	81	382
Starke	73	65	1	11	150
Steuben	106	67	1	20	194
Sullivan	57	29	2	19	107
Switzerland	35	3	0	2	40
Tippecanoe	790	497	7	31	1,325
Tipton	16	398	0	2	416
Union	24	40	1	4	69
Vanderburgh	990	274	21	170	1,455
Vermillion	80	35	1	16	132
Vigo	445	284	3	4	736
Wabash	196	86	4	47	333
Warren	20	9	0	21	50
Warrick	77	26	0	9	112
Washington	130	115	4	27	276
Wayne	452	67	5	46	570
Wells	192	45	2	10	249
White	66	42	3	23	134
Whitley	143	281	1	29	454
Missing	28	0	0	0	28
TOTALS	26,858	17,730	316	2,611	47,515
			2,927		

*Counties that are not participating in Community Corrections

** Community Corrections data as of 08/08/19

INDIANA DEPARTMENT OF CORRECTION
 ADULT OFFENDERS
 Population Trend Summary
 for August 2019
 Snapshot date: 08/01/2019

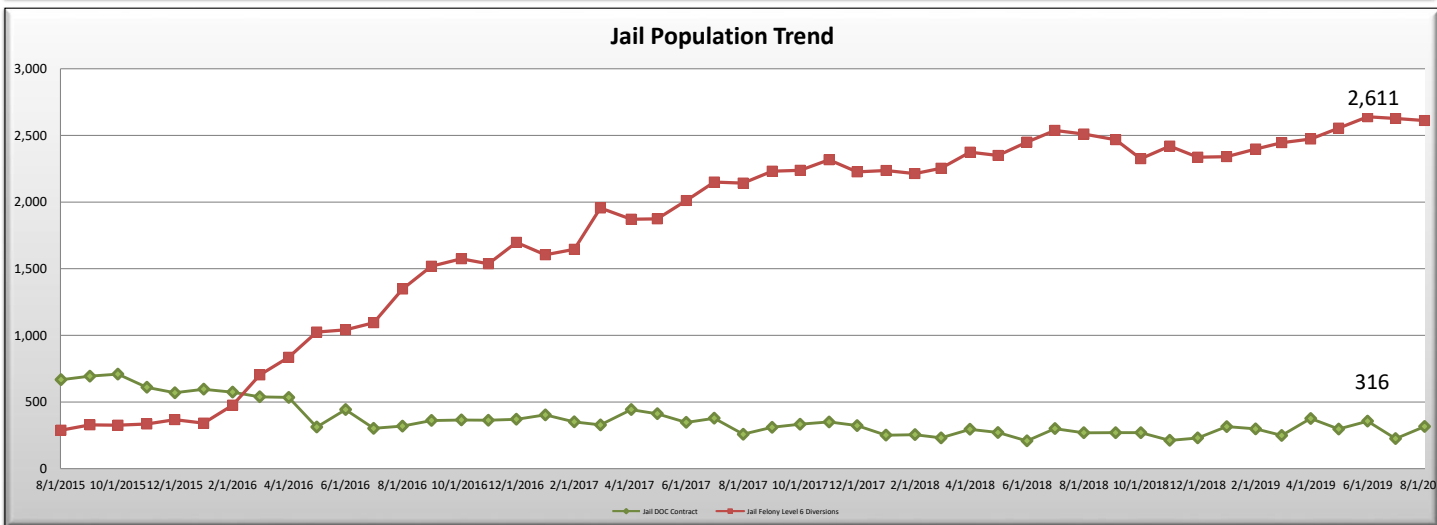
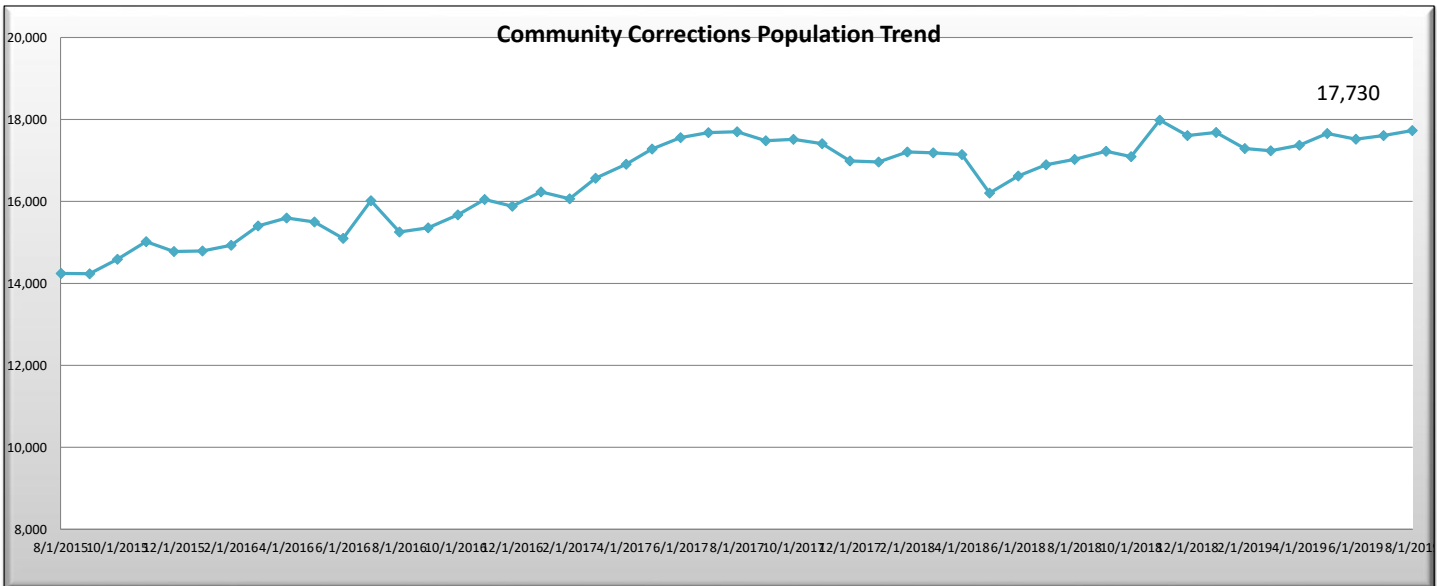
Date	DOC Adult	Community Corrections	Jail DOC Contract	Jail Felony Level 6 Diversions	Total
1/1/2018	25,773	16,964	251	2,237	45,225
2/1/2018	25,743	17,207	255	2,213	45,418
3/1/2018	25,865	17,187	231	2,254	43,708
4/1/2018	26,025	17,143	295	2,374	42,976
5/1/2018	26,054	16,205	271	2,350	44,880
6/1/2018	26,260	16,623	208	2,449	45,540
7/1/2018	26,328	16,894	300	2,538	46,060
8/1/2018	26,228	17,026	269	2,510	46,033
9/1/2018	26,352	17,223	270	2,467	46,312
10/1/2018	26,409	17,093	270	2,325	46,097
11/1/2018	26,505	17,984	212	2,420	47,121
12/1/2018	26,510	17,609	230	2,336	46,685
1/1/2019	26,562	17,685	315	2,341	46,903
2/1/2019	26,468	17,291	298	2,398	46,455
3/1/2019	26,545	17,235	249	2,445	46,474
4/1/2019	26,619	17,373	376	2,473	46,841
5/1/2019	26,731	17,659	297	2,554	47,241
6/1/2019	26,791	17,521	356	2,640	47,308
7/1/2019	26,881	17,606	225	2,627	47,339
8/1/2019	↓ 26,858	↑ 17,730	↑ 316	↓ 2,611	↑ 47,515



Jail Felony Level 6 Diversions= F6 offenders that are housed in a county jail and serving time locally

INDIANA DEPARTMENT OF CORRECTION
 ADULT OFFENDERS
 Population Trend Summary
 for August 2019
 Snapshot date: 08/01/2019

Date	DOC Adult	Community Corrections	Jail DOC Contract	Jail Felony Level 6 Diversions	Total
1/1/2018	25,773	16,964	251	2,237	45,225
2/1/2018	25,743	17,207	255	2,213	45,418
3/1/2018	25,865	17,187	231	2,254	43,708
4/1/2018	26,025	17,143	295	2,374	42,976
5/1/2018	26,054	16,205	271	2,350	44,880
6/1/2018	26,260	16,623	208	2,449	45,540
7/1/2018	26,328	16,894	300	2,538	46,060
8/1/2018	26,228	17,026	269	2,510	46,033
9/1/2018	26,352	17,223	270	2,467	46,312
10/1/2018	26,409	17,093	270	2,325	46,097
11/1/2018	26,505	17,984	212	2,420	47,121
12/1/2018	26,510	17,609	230	2,336	46,685
1/1/2019	26,562	17,685	315	2,341	46,903
2/1/2019	26,468	17,291	298	2,398	46,455
3/1/2019	26,545	17,235	249	2,445	46,474
4/1/2019	26,619	17,373	376	2,473	46,841
5/1/2019	26,731	17,659	297	2,554	47,241
6/1/2019	26,791	17,521	356	2,640	47,308
7/1/2019	26,881	17,606	225	2,627	47,339
8/1/2019	↓ 26,858	↑ 17,730	↑ 316	↓ 2,611	↑ 47,515



Jail Felony Level 6 Diversions= F6 offenders that are housed in a county jail and serving time locally

INDIANA DEPARTMENT OF CORRECTION
by Facility and Highest Felony Classification
for August 2019
Snapshot date: 08/01/2019

Minimum Security - Adult MALE																
Facility Name	Beds	Offenders	% Capacity	Murder	FA	FB	FC	FD	F1	F2	F3	F4	F5	F6	HO	
Chain O'Lakes	102	97	95.1%	0	6	16	2	2	0	1	7	12	42	9	0	
Edinburgh	344	343	99.7%	0	15	42	10	3	0	6	16	70	141	40	0	
Miami - MCA	204	198	97.1%	17	25	55	4	2	0	2	6	29	50	8	0	
New Castle - NCA	204	197	96.6%	0	10	33	9	2	0	7	4	28	84	20	0	
Pendleton - IRO	220	211	95.9%	24	41	33	5	0	0	2	11	32	49	14	0	
Westville - WCA	379	349	92.1%	8	31	64	13	5	0	7	23	50	115	32	1	
Wabash Valley - WVA	198	196	99.0%	0	4	21	6	1	0	5	10	57	73	18	1	
Sub-Total	1,651	1,591	96.4%	49	132	264	49	15	0	30	77	278	554	141	2	

Re-Entry & Work Release - Adult MALE																
Facility Name	Beds	Offenders	% Capacity	Murder	FA	FB	FC	FD	F1	F2	F3	F4	F5	F6	HO	
Bartholomew Co. Re-Entry	20	1	5.0%	0	0	0	0	0	0	0	0	0	1	0	0	
Chain O'Lakes Re-Entry	38	37	97.4%	0	0	4	1	0	0	0	1	8	21	2	0	
Duval Center Re-Entry	40	6	15.0%	0	1	3	0	0	0	0	0	0	1	1	0	
Lake Co. Re-Entry	10	6	60.0%	0	1	2	0	0	0	0	0	0	3	0	0	
South Bend Re-Entry	172	175	101.7%	13	30	38	8	2	0	0	10	24	37	13	0	
VOA/Hope Hall Re-Entry	25	23	92.0%	0	3	7	1	0	0	1	1	5	4	1	0	
Starke Co. PI - TC	37	37	100.0%	0	2	6	1	0	0	0	3	3	16	6	0	
Sub-Total	342	285	83.3%	13	37	60	11	2	0	1	15	40	83	23	0	

Medium Security - Adult MALE																
Facility Name	Beds	Offenders	% Capacity	Murder	FA	FB	FC	FD	F1	F2	F3	F4	F5	F6	HO	
Branchville	1,485	1,424	95.9%	19	50	254	46	12	0	82	189	272	378	122	0	
Correctional Industrial	1,495	1,461	97.7%	69	237	343	43	4	11	131	203	129	225	66	0	
Indiana State Prison ISO	385	377	97.9%	28	69	60	18	2	0	2	42	43	95	18	0	
Plainfield	1,696	1,507	88.9%	63	137	315	61	10	0	47	157	224	380	113	0	
Putnamville	2,510	2,163	86.2%	50	110	424	81	11	0	91	232	367	624	173	0	
Heritage Trail	868	860	99.1%	1	8	70	29	8	0	21	108	139	378	98	0	
Westville	2,941	2,438	82.9%	60	222	427	112	15	1	52	275	373	732	168	1	
New Castle	2,431	2,405	98.9%	14	729	642	169	5	21	8	201	405	200	11	0	
Sub-Total	13811	12635	91.5%	304	1,562	2,535	559	67	33	434	1,407	1,952	3,012	769	1	

Note: 31 Offenders have missing sentencing data due to processing, misdemeanor, or because of safekeeper status.

INDIANA DEPARTMENT OF CORRECTION
by Facility and Highest Felony Classification
for August 2019
Snapshot date: 08/01/2019

Maximum Security - Adult MALE																
Facility Name	Beds	Offenders	% Capacity	Murder	FA	FB	FC	FD	F1	F2	F3	F4	F5	F6	HO	
Miami	2,984	2,914	97.7%	209	476	625	65	5	148	401	456	244	243	42	0	
Indiana State Prison	2,067	1,989	96.2%	697	614	268	20	3	118	84	65	55	56	9	0	
Pendleton	1,449	1,397	96.4%	464	450	172	11	1	86	57	68	34	43	11	0	
Pendleton Treatment Unit	214	180	84.1%	34	43	42	8	0	8	4	9	10	19	3	0	
ISR Secure Housing Unit	69	48	69.6%	16	4	19	2	0	1	1	3	0	1	1	0	
New Castle Annex	486	419	86.2%	46	113	121	17	0	4	11	38	25	35	9	0	
New Castle Mental Health	128	108	84.4%	16	24	26	5	1	3	2	7	8	16	0	0	
WCU Secure Housing Unit	110	98	89.1%	17	22	23	3	0	0	2	8	7	12	4	0	
Wabash Valley	1,785	1,722	96.5%	541	600	217	11	2	97	55	76	50	63	10	0	
WVS Secure Housing Unit	216	188	87.0%	33	32	51	4	0	4	5	16	18	23	2	0	
Sub-Total	9,508	9,063	95.3%	2,073	2,378	1,564	146	12	469	622	746	451	511	91	0	

Intake Facility - Adult MALE																
Reception Diag. Center	695	654	94.1%	7	13	68	27	9	14	25	70	95	237	89	0	
Sub-Total	695	654	94.1%	7	13	68	27	9	14	25	70	95	237	89	0	

Minimum Security & Re-Entry - Adult FEMALE																
Facility Name	Beds	Offenders	% Capacity	Murder	FA	FB	FC	FD	F1	F2	F3	F4	F5	F6	HO	
Madison	706	684	96.9%	6	25	84	20	3	0	39	78	160	200	69	0	
Jefferson Co. Re-Entry	72	72	100.0%	1	4	15	3	1	0	1	8	10	23	6	0	
Crane House	45	25	55.6%	0	0	2	3	0	0	0	1	10	7	2	0	
Sub-Total	823	781	94.9%	7	29	101	26	4	0	40	87	180	230	77	0	

Medium Security - Adult FEMALE																
Facility Name	Beds	Offenders	% Capacity	Murder	FA	FB	FC	FD	F1	F2	F3	F4	F5	F6	HO	
Rockville	1,041	978	93.9%	50	104	108	27	3	23	97	146	119	208	93	0	
Sub-Total	1,041	978	93.9%	50	104	108	27	3	23	97	146	119	208	93	0	

Maximum Security - Adult FEMALE																
Women's Prison	727	692	95.2%	70	66	73	19	5	15	54	78	86	149	77	0	
Rockville Intake	212	148	69.8%	2	0	7	1	5	0	9	18	29	50	27	0	
Sub-Total	939	840	89.5%	72	66	80	20	10	15	63	96	115	199	104	0	

TOTAL	28,810	26,827	93.1%	2,575	4,321	4,780	865	122	554	1,312	2,644	3,230	5,034	1,387	3
--------------	---------------	---------------	--------------	--------------	--------------	--------------	------------	------------	------------	--------------	--------------	--------------	--------------	--------------	----------

Note: 31 Offenders have missing sentencing data due to processing, misdemeanor, or because of safekeeper status.

INDIANA DEPARTMENT OF CORRECTION
ADULT OFFENDERS
by Most Serious Offense, Alphabetical
for August 2019
Snapshot date: 08/01/2019

Most Serious Offense	Murder	FA	FB	FC	FD	F1	F2	F3	F4	F5	F6	HO	Total
Accident Fail To Stop Resulting in Serious Injury or Death	.	.	1	1	19	.	.	21
Aggravated Battery	.	.	165	.	.	8	.	320	493
Aiding Inducing/Causing An Offense	.	49	62	5	.	11	24	54	29	52	2	.	288
Arson	.	14	50	.	.	.	3	2	74	.	.	.	143
Assisting A Criminal	.	.	.	3	14	2	.	19
Assisting Suicide	.	.	.	1	1
Attempt To Commit Felony	.	479	114	8	.	108	38	90	25	73	5	.	940
Auto Theft, Receiving Stolen Auto Parts	.	.	.	11	4	22	56	.	93
Battery	.	24	37	73	1	.	8	40	4	637	54	.	878
Battery By Bodily Waste	.	.	1	.	1	2
Battery To A Child Causing Death	.	4	4
Bribery	4	.	.	4
Burglary	.	254	900	146	.	30	139	49	962	593	.	.	3,073
Carjacking	.	.	32	32
Carrying Handgun Without License	.	.	.	6	6
Causing Suicide	.	.	1	1
Check Deception	1	1	.	2
Check Fraud	.	.	.	1	3	1	2	.	7
Child Exploitation	.	.	.	10	11	34	.	.	55
Child Molesting	.	1,389	376	118	.	295	4	130	288	.	.	.	2,600
Child Possession of Firearm	2	.	.	2
Child Seduction	.	.	.	2	5	.	.	7
Child Solicitation	.	.	1	4	1	.	.	.	16	34	.	.	56
Conspiracy	.	101	75	4	.	8	62	59	36	49	2	.	396
Contributing To The Delinquency Of Minor	1	.	1
Controlled Substance Registration	.	.	.	2	1	3	.	6
Conversion	4	.	.	4
Corrupt Business Influence	.	.	.	12	51	.	.	63
Criminal Confinement	.	.	121	15	2	.	7	103	.	110	7	.	365
Criminal Deviate Conduct	.	137	72	209
Criminal Gang Enhancement	1	1
Criminal Recklessness	.	.	.	11	2	48	16	.	77
Criminal Trespass	1	.	1
Dangerous Control Of A Handgun	1	.	.	1
Deal Sub Represented To Be Controlled Sub	1	.	1
Dealing In Cocaine Or Narcotic Drug	.	656	511	.	.	.	313	203	274	235	.	.	2,192
Dealing In Marijuana, Hash, or Hash Oil	.	.	.	1	18	5	.	24
Dealing In Methamphetamine	.	197	450	.	.	.	491	333	489	354	.	.	2,314
Dealing In Schedule I, II, or III Controlled Substance	.	74	273	.	.	.	17	19	28	23	.	.	434
Dealing In Schedule IV Controlled Substance	.	.	6	7	.	.	.	9	2	4	.	.	28
Dealing Possessing Look-Alike Substance	.	.	.	4	1	26	18	.	49
Dealing Substance Represented To Be Controlled Substance	1	1
Disarming A Law Enforcement Officer	.	.	.	1	.	.	.	1	.	14	.	.	16

Note: 31 offenders have missing sentencing data due to processing or because of safekeeper status.

INDIANA DEPARTMENT OF CORRECTION
ADULT OFFENDERS
by Most Serious Offense, Alphabetical
for August 2019
Snapshot date: 08/01/2019

Most Serious Offense	Murder	FA	FB	FC	FD	F1	F2	F3	F4	F5	F6	HO	Total
Dissemination Of Matter Harmful To Minor	1	.	1
Domestic Battery	1	230	51	.	282
Domestic Battery Resulting in Death Under 14	1	1
Domestic Battery with Serious Bodily Injury Under Age 14	4	4
Driving Whl/Suspended Resulting In Death	1	.	.	1
Escape	4	106	126	.	236
Fail To Return To Accident Resulting in Serious Injury	24	24
Fail To Stop After Accident - Operating Vehicle Intoxicated	.	.	4	4
Failure Of Sex Offender To Possess Id	1	1
Failure To Appear	2	.	2
Failure To Register As A Sex Offender	.	.	.	8	169	11	.	188
Failure To Return Lawful Detention/Escape	.	.	8	9	3	20
Felon Fraud in Offer	1	.	.	.	1
Firearm Within 1 Mile School Property Without License	.	.	.	9	9
Forgery,Counterfeiting,Application Fraud	.	.	.	94	33	.	127
Fraud	1	18	.	19
Fraud On A Financial Institution	.	.	.	14	88	.	.	102
Habitual Offender	1	.	1
Habitual Offender Substance Abuse	1	1
Habitual Substance Offender	3	3
Handgun Violation	.	.	.	5	338	.	.	343
Home Improvement Fraud Offenses	.	.	.	3	1	2	.	.	6
Human Sexual Trafficking	.	.	4	.	.	.	1	2	2	.	.	.	9
Identity Deception	1	9	.	10
Incest	.	.	20	6	5	5	.	.	36
Inmate Fraud	1	.	.	1
Insurance Fraud	1	.	.	1
Intimidation	.	.	.	10	2	127	22	.	161
Invasion Of Privacy	9	.	9
Involuntary Manslaughter	6	.	.	6
Kidnapping	.	84	9	19	.	9	1	.	122
Maintaining Common Nuisance	4	21	.	25
Manufacture Methamphetamine	4	13	.	.	.	17
Manufacturing Methamphetamine	1	1
Mischief	1	1	.	2
Murder	2,575	2,575
Neglect Of A Dependent	.	.	25	5	32	8	.	70
Neglect Of A Dependent Resulting in Serious Injury	71	71
Neglect Of Dependent Resulting In Death	.	57	.	.	.	38	95
Non Support Of Dependent Child	.	.	.	60	7	19	12	.	98
Obliterating Handgun I.D.	.	.	.	1	16	.	.	17
Obstruction Of Justice	1	8	5	.	14
Operate Vehicle After Suspended For Life	.	.	.	25	371	.	.	396

Note: 31 offenders have missing sentencing data due to processing or because of safekeeper status.

INDIANA DEPARTMENT OF CORRECTION
ADULT OFFENDERS
by Most Serious Offense, Alphabetical
for August 2019
Snapshot date: 08/01/2019

Most Serious Offense	Murder	FA	FB	FC	FD	F1	F2	F3	F4	F5	F6	HO	Total
Operating Vehicle Intoxicated	3	.	.	3
Operating Vehicle Intoxicated Resulting in Death	.	.	29	2	57	26	.	.	114
Operating Vehicle Intoxicated Resulting in Serious Bodily Injury	.	.	.	3	3	15	5	.	26
Operating Vehicle Intoxicated w/ Previous Conviction	.	.	.	1	1
Operating Vehicle Intoxicated-Prior Conviction	6	25	.	31
Operating Vehicle While Intoxicated - Endangering Person	2	2
Operating Vehicle With Schedule I in Body - Causing Death	.	.	.	1	1
Operating Vehicle With Schedule I,II in Body - Causing Death	1	.	.	.	1
Operating Vehicle with BAC Equal or Greater than .15	0
Operating Vehicle-Habit Traffic Violator	.	.	.	1	4	27	.	32
Opererating Vehicle While Intoxicated - Prior Conviction	67	.	67
Perjury	1	.	1
Pharmacy Robbery	3	.	.	.	3
Possess Chemical Reagents Or Precursors	.	.	.	9	9
Possess Destructive Device Or Explosive	.	1	7	.	.	1	.	.	9
Possess Of Precursors	1	3	.	4
Possess of Precursors	1	.	.	1
Possession Of A Controlled Substance	.	.	1	5	11	1	.	18
Possession Of A Machine Gun Or Bomb	1	.	.	1
Possession Of Child Pornography	19	1	.	20
Possession Of Cocaine Or Narcotic Drug	.	39	41	12	6	.	.	42	58	134	92	.	424
Possession Of Dangerous Device	7	8	.	.	15
Possession Of Marijuana, Hash, Hash Oil	1	1	.	2
Possession Of Methamphetamine	.	4	42	9	3	.	.	124	163	343	239	.	927
Possession Of Syringes Or Needles	15	90	.	105
Possession Or Use Of Legend Drug	.	.	.	1	6	12	.	19
Prisoner Poss. Dangerous Device/Material	.	.	10	10
Promoting Prostitution	.	.	.	3	6	.	.	9
Promoting Prostitution Under Age 18	.	.	4	4
Prostitution	1	.	1
Rape	.	246	128	.	.	56	.	111	541
Reckless Homicide	.	.	.	9	31	.	.	40
Removing, Damaging, Or Altering a VIN	.	.	.	1	1
Residential Entry	1	26	.	27
Resisting Law Enforcement	.	.	4	1	6	.	1	11	.	10	64	.	97
Robbery	.	227	756	59	.	.	100	818	.	245	.	.	2,205
Sale Of Unregistered Security	.	.	.	2	2
Sex Predator Unlawful Job Near Children	1	.	.	1

Note: 31 offenders have missing sentencing data due to processing or because of safekeeper status.

INDIANA DEPARTMENT OF CORRECTION
ADULT OFFENDERS
by Most Serious Offense, Alphabetical
for August 2019
Snapshot date: 08/01/2019

Most Serious Offense	Murder	FA	FB	FC	FD	F1	F2	F3	F4	F5	F6	HO	Total
Sexual Battery	.	.	.	1	4	.	.	.	10	.	1	.	16
Sexual Misconduct With A Minor	.	3	186	30	1	.	.	.	142	78	.	.	440
Sexual Misconduct w/ Service Provider	2	.	.	2
Stalking	.	.	4	5	1	.	.	.	6	38	2	.	56
Strangulation	1	2	13	.	16
Synthetic Identity Deception	6	.	6
Terroristic Mischief	1	.	.	1
Theft,Receiving Stolen Property	.	.	.	2	29	30	203	.	264
Trafficking With An Inmate	.	.	.	8	58	.	.	66
Unlawful Firearm Poss By Serious Felon	.	.	229	515	.	.	.	744
Vicarious Sexual Gratification	.	.	2	1	4	1	.	.	8
Voluntary Manslaughter	.	282	35	.	.	.	86	403
Welfare Fraud	.	.	.	6	3	9
	2,575	4,321	4,780	865	122	554	1,312	2,644	3,230	5,034	1,387	3	26,827

Note: 31 offenders have missing sentencing data due to processing or because of safekeeper status.

INDIANA DEPARTMENT OF CORRECTION
ADULT OFFENDERS
by Most Serious Offense, Ranked
for August 2019
Snapshot date: 08/01/2019

Most Serious Offense	Murder	FA	FB	FC	FD	F1	F2	F3	F4	F5	F6	HO	Total
Burglary	.	254	900	146	.	30	139	49	962	593	.	.	3,073
Child Molesting	.	1,389	376	118	.	295	4	130	288	.	.	.	2,600
Murder	2,575	2,575
Dealing In Methamphetamine	.	197	450	.	.	.	491	333	489	354	.	.	2,314
Robbery	.	227	756	59	.	.	100	818	.	245	.	.	2,205
Dealing In Cocaine Or Narcotic Drug	.	656	511	.	.	.	313	203	274	235	.	.	2,192
Attempt To Commit Felony	.	479	114	8	.	108	38	90	25	73	5	.	940
Possession Of Methamphetamine	.	4	42	9	3	.	.	124	163	343	239	.	927
Battery	.	24	37	73	1	.	8	40	4	637	54	.	878
Unlawful Firearm Poss By Serious Felon	.	.	229	515	.	.	.	744
Rape	.	246	128	.	.	56	.	111	541
Aggravated Battery	.	.	165	.	.	8	.	320	493
Sexual Misconduct With A Minor	.	3	186	30	1	.	.	.	142	78	.	.	440
Dealing In Schedule I, II, or III Controlled Substance	.	74	273	.	.	.	17	19	28	23	.	.	434
Possession Of Cocaine Or Narcotic Drug	.	39	41	12	6	.	.	42	58	134	92	.	424
Voluntary Manslaughter	.	282	35	.	.	.	86	403
Conspiracy	.	101	75	4	.	8	62	59	36	49	2	.	396
Operate Vehicle After Suspended For Life	.	.	.	25	371	.	.	396
Criminal Confinement	.	.	121	15	2	.	7	103	.	110	7	.	365
Handgun Violation	.	.	.	5	338	.	.	343
Aiding Inducing/Causing An Offense	.	49	62	5	.	11	24	54	29	52	2	.	288
Domestic Battery	1	230	51	.	282
Theft,Receiving Stolen Property	.	.	.	2	29	30	203	.	264
Escape	4	106	126	.	236
Criminal Deviate Conduct	.	137	72	209
Failure To Register As A Sex Offender	.	.	.	8	169	11	.	188
Intimidation	.	.	.	10	2	127	22	.	161
Arson	.	14	50	.	.	.	3	2	74	.	.	.	143
Forgery,Counterfeiting,Application Fraud	.	.	.	94	33	.	127
Kidnapping	.	84	9	19	.	9	1	.	122
Operating Vehicle Intoxicated Resulting in Death	.	.	29	2	57	26	.	.	114
Possession Of Syringes Or Needles	15	90	.	105
Fraud On A Financial Institution	.	.	.	14	88	.	.	102
Non Support Of Dependent Child	.	.	.	60	7	19	12	.	98
Resisting Law Enforcement	.	.	4	1	6	.	1	11	.	10	64	.	97
Neglect Of Dependent Resulting In Death	.	57	.	.	.	38	95
Auto Theft, Receiving Stolen Auto Parts	.	.	.	11	4	22	56	.	93
Criminal Recklessness	.	.	.	11	2	48	16	.	77
Neglect Of A Dependent Resulting in Serious Injury	71	71
Neglect Of A Dependent	.	.	25	5	32	8	.	70

Note: 31 offenders have missing sentencing data due to processing or because of safekeeper status.

INDIANA DEPARTMENT OF CORRECTION
ADULT OFFENDERS
by Most Serious Offense, Ranked
for August 2019
Snapshot date: 08/01/2019

Most Serious Offense	Murder	FA	FB	FC	FD	F1	F2	F3	F4	F5	F6	HO	Total
Opererating Vehicle While Intoxicated - Prior Conviction	67	.	67
Trafficking With An Inmate	.	.	.	8	58	.	.	66
Corrupt Business Influence	.	.	.	12	51	.	.	63
Child Solicitation	.	.	1	4	1	.	.	.	16	34	.	.	56
Stalking	.	.	4	5	1	.	.	.	6	38	2	.	56
Child Exploitation	.	.	.	10	11	34	.	.	55
Dealing Possessing Look-Alike Substance	.	.	.	4	1	26	18	.	49
Reckless Homicide	.	.	.	9	31	.	.	40
Incest	.	.	20	6	5	5	.	.	36
Carjacking	.	.	32	32
Operating Vehicle-Habit Traffic Violator	.	.	.	1	4	27	.	32
Operating Vehicle Intoxicated-Prior Conviction	6	25	.	31
Dealing In Schedule IV Controlled Substance	.	.	6	7	.	.	.	9	2	4	.	.	28
Residential Entry	1	26	.	27
Operating Vehicle Intoxicated Resulting in Serious Bodily Injury	.	.	.	3	3	15	5	.	26
Maintaining Common Nuisance	4	21	.	25
Dealing In Marijuana, Hash, or Hash Oil	.	.	.	1	18	5	.	24
Fail To Return To Accident Resulting in Serious Injury	24	24
Accident Fail To Stop Resulting in Serious Injury or Death	.	.	1	1	19	.	.	21
Failure To Return Lawful Detention/Escape	.	.	8	9	3	20
Possession Of Child Pornography	19	1	.	20
Assisting A Criminal	.	.	.	3	14	2	.	19
Fraud	1	18	.	19
Possession Or Use Of Legend Drug	.	.	.	1	6	12	.	19
Possession Of A Controlled Substance	.	.	1	5	11	1	.	18
Manufacture Methamphetamine	4	13	.	.	.	17
Obliterating Handgun I.D.	.	.	.	1	16	.	.	17
Disarming A Law Enforcement Officer	.	.	.	1	.	.	.	1	.	14	.	.	16
Sexual Battery	.	.	.	1	4	.	.	.	10	.	1	.	16
Strangulation	1	2	13	.	16
Possession Of Dangerous Device	7	8	.	.	15
Obstruction Of Justice	1	8	5	.	14
Identity Deception	1	9	.	10
Prisoner Poss. Dangerous Device/Material	.	.	10	10
Firearm Within 1 Mile School Property Without License	.	.	.	9	9
Human Sexual Trafficking	.	.	4	.	.	.	1	2	2	.	.	.	9
Invasion Of Privacy	9	.	9
Possess Chemical Reagents Or Precursors	.	.	.	9	9

Note: 31 offenders have missing sentencing data due to processing or because of safekeeper status.

INDIANA DEPARTMENT OF CORRECTION
ADULT OFFENDERS
by Most Serious Offense, Ranked
for August 2019
Snapshot date: 08/01/2019

Most Serious Offense	Murder	FA	FB	FC	FD	F1	F2	F3	F4	F5	F6	HO	Total
Possess Destructive Device Or Explosive	.	1	7	.	.	1	.	.	9
Promoting Prostitution	.	.	.	3	6	.	.	9
Welfare Fraud	.	.	.	6	3	9
Vicarious Sexual Gratification	.	.	2	1	4	1	.	.	8
Check Fraud	.	.	.	1	3	1	2	.	7
Child Seduction	.	.	.	2	5	.	.	7
Carrying Handgun Without License	.	.	.	6	6
Controlled Substance Registration	.	.	.	2	1	3	.	6
Home Improvement Fraud Offenses	.	.	.	3	1	2	.	.	6
Involuntary Manslaughter	6	.	.	6
Synthetic Identity Deception	6	.	6
Battery To A Child Causing Death	.	4	4
Bribery	4	.	.	4
Conversion	4	.	.	4
Domestic Battery with Serious Bodily Injury Under Age 14	4	4
Fail To Stop After Accident - Operating Vehicle Intoxicated	.	.	4	4
Possess Of Precursors	1	3	.	4
Promoting Prostitution Under Age 18	.	.	4	4
Habitual Substance Offender	3	3
Operating Vehicle Intoxicated	3	.	.	3
Pharmacy Robbery	3	.	.	.	3
Battery By Bodily Waste	.	.	1	.	1	2
Check Deception	1	1	.	2
Child Possession of Firearm	2	.	.	2
Failure To Appear	2	.	2
Mischief	1	1	.	2
Operating Vehicle While Intoxicated - Endangering Person	2	2
Possession Of Marijuana, Hash, Hash Oil	1	1	.	2
Sale Of Unregistered Security	.	.	.	2	2
Sexual Misconduct w/ Service Provider	2	.	.	2
Assisting Suicide	.	.	.	1	1
Causing Suicide	.	.	1	1
Contributing To The Delinquency Of Minor	1	.	1
Criminal Gang Enhancement	1	1
Criminal Trespass	1	.	1
Dangerous Control Of A Handgun	1	.	.	1
Deal Sub Represented To Be Controlled Sub	1	.	1
Dealing Substance Represented To Be Controlled Substance	1	1

Note: 31 offenders have missing sentencing data due to processing or because of safekeeper status.

INDIANA DEPARTMENT OF CORRECTION
ADULT OFFENDERS
by Most Serious Offense, Ranked
for August 2019
Snapshot date: 08/01/2019

Most Serious Offense	Murder	FA	FB	FC	FD	F1	F2	F3	F4	F5	F6	HO	Total
Dissemination Of Matter Harmful To Minor	1	.	1
Domestic Battery Resulting in Death Under 14	1	1
Driving Whl/Suspended Resulting In Death	1	.	.	1
Failure Of Sex Offender To Possess Id	1	1
Felon Fraud in Offer	1	.	.	.	1
Habitual Offender	1	.	1
Habitual Offender Substance Abuse	1	1
Inmate Fraud	1	.	.	1
Insurance Fraud	1	.	.	1
Manufacturing Methamphetamine	1	1
Operating Vehicle Intoxicated w/ Previous Conviction	.	.	.	1	1
Operating Vehicle With Schedule I in Body - Causing Death	.	.	.	1	1
Operating Vehicle With Schedule I,II in Body - Causing Death	1	.	.	.	1
Perjury	1	.	1
Possess of Precursors	1	.	.	1
Possession Of A Machine Gun Or Bomb	1	.	.	1
Prostitution	1	.	1
Removing, Damaging, Or Altering a VIN	.	.	.	1	1
Sex Predator Unlawful Job Near Children	1	.	.	1
Terroristic Mischief	1	.	.	1
Total	2,575	4,321	4,780	865	122	554	1,312	2,644	3,230	5,034	1,387	3	26,827

Note: 31 offenders have missing sentencing data due to processing or because of safekeeper status.

Felony Levels By Facility
For Most Serious Offense
August 2019
Snapshot Date August 1st, 2019

INDIANA DEPARTMENT OF CORRECTION
ADULT OFFENDERS
by Most Serious Offense

Branchville Correctional Facility												
Most Serious Offense	Murder	FA	FB	FC	FD	F1	F2	F3	F4	F5	F6	Total
Aggravated Battery	.	.	6	12	.	.	.	18
Aiding Inducing/Causing An Offense	.	1	4	.	.	.	1	1	2	1	.	10
Arson	.	1	2	3	.	.	6
Assisting A Criminal	1	.	1
Attempt To Commit Felony	.	8	5	.	.	.	4	5	1	5	.	28
Auto Theft, Receiving Stolen Auto Parts	1	4	5	10
Battery	.	.	1	4	.	.	1	4	.	47	10	67
Burglary	.	4	63	9	.	.	4	5	79	53	.	217
Carjacking	.	.	2	2
Check Fraud	1	1
Child Molesting	.	1	2	1	.	.	4
Conspiracy	.	5	6	1	.	.	5	10	8	3	.	38
Conversion	1	.	1
Corrupt Business Influence	2	.	2
Criminal Confinement	.	.	5	.	1	.	.	8	.	13	.	27
Criminal Recklessness	.	.	.	1	3	3	7
Dealing In Cocaine Or Narcotic Drug	.	13	26	.	.	.	18	15	17	15	.	104
Dealing In Marijuana, Hash, or Hash Oil	1	.	1
Dealing In Methamphetamine	.	7	56	.	.	.	44	56	59	25	.	247
Dealing In Schedule I, II, or III Controlled Substance	.	.	22	.	.	.	1	.	2	.	.	25
Dealing In Schedule IV Controlled Substance	1	.	1
Dealing Possessing Look-Alike Substance	3	3	6
Disarming A Law Enforcement Officer	.	.	.	1	1
Domestic Battery	19	3	22
Escape	7	12	19
Failure To Register As A Sex Offender	12	.	12
Forgery,Counterfeiting,Application Fraud	.	.	.	4	2	6
Fraud On A Financial Institution	.	.	.	1	7	.	8
Handgun Violation	.	.	.	1	24	.	25
Intimidation	9	2	11
Involuntary Manslaughter	2	.	2
Kidnapping	1	.	.	.	1
Maintaining Common Nuisance	1	1	2
Manufacture Methamphetamine	1	2	.	.	3
Mischief	1	1

INDIANA DEPARTMENT OF CORRECTION
ADULT OFFENDERS
by Most Serious Offense

Branchville Correctional Facility												
Most Serious Offense	Murder	FA	FB	FC	FD	F1	F2	F3	F4	F5	F6	Total
Murder	19	19
Neglect Of A Dependent	.	.	2	1	.	3
Neglect Of A Dependent Resulting In Serious Injury	1	.	.	.	1
Neglect Of Dependent Resulting In Death	.	2	2
Non Support Of Dependent Child	.	.	.	7	1	8
Obliterating Handgun I.D.	5	.	5
Obstruction Of Justice	1	1	2
Operate Vehicle After Suspended For Life	.	.	.	3	34	.	37
Operating Vehicle Intoxicated	1	.	1
Operating Vehicle Intoxicated Resulting in Death	.	.	2	4	1	.	7
Operating Vehicle Intoxicated Resulting In Serious Bodily Injury	.	.	.	1	2	3
Operating Vehicle Intoxicated-Prior Conviction	1	1	2
Operating Vehicle-Habit Traffic Violator	4	4
Opererating Vehicle While Intoxicated - Prior Conviction	1	1
Possess Chemical Reagents Or Precursors	.	.	.	2	2
Possess Destructive Device Or Explosive	2	2
Possess Of Precursors	1	1
Possession Of A Controlled Substance	.	.	.	1	1	2
Possession Of Cocaine Or Narcotic Drug	.	2	2	2	4	9	9	28
Possession Of Dangerous Device	1	.	1
Possession Of Marijuana, Hash, Hash Oil	1	1
Possession Of Methamphetamine	.	.	4	1	.	.	.	20	27	29	17	98
Possession Of Syringes Or Needles	2	10	12
Possession Or Use Of Legend Drug	1	1
Promoting Prostitution	.	.	.	1	1
Rape	.	.	2	2
Reckless Homicide	3	.	3
Residential Entry	5	5
Resisting Law Enforcement	3	8	11
Robbery	.	2	22	5	.	.	1	48	.	20	.	98
Sexual Misconduct With A Minor	.	.	1	1	.	.	2
Stalking	.	.	.	3	6	.	9
Strangulation	2	2
Theft,Receiving Stolen Property	3	1	19	22
Trafficking With An Inmate	3	.	3
Unlawful Firearm Poss By Serious Felon	.	.	18	62	.	.	80
Voluntary Manslaughter	.	4	1	.	.	.	1	6
Total	19	50	254	46	12	0	82	189	272	378	122	1424

INDIANA DEPARTMENT OF CORRECTION
ADULT OFFENDERS
by Most Serious Offense

Correctional Industrial Facility												
Most Serious Offense	Murder	FA	FB	FC	FD	F1	F2	F3	F4	F5	F6	Total
Accident Fail To Stop Resulting in Serious Injury or Death	1	.	1
Aggravated Battery	.	.	18	.	.	1	.	38	.	.	.	57
Aiding Inducing/Causing An Offense	.	6	6	.	.	.	2	5	2	.	.	21
Arson	.	1	3	2	.	.	6
Assisting A Criminal	1	.	1
Assisting Suicide	.	.	.	1	1
Attempt To Commit Felony	.	27	8	.	.	2	2	1	1	5	.	46
Auto Theft, Receiving Stolen Auto Parts	.	.	.	1	3	4
Battery	.	1	1	5	.	.	1	1	.	33	3	45
Burglary	.	26	73	9	.	.	17	3	43	33	.	204
Carjacking	.	.	3	3
Carrying Handgun Without License	.	.	.	2	2
Check Fraud	1	1
Child Molesting	.	19	4	1	.	5	.	3	2	.	.	34
Conspiracy	.	14	6	.	.	1	3	7	2	3	.	36
Corrupt Business Influence	1	.	1
Criminal Confinement	.	.	12	2	.	.	.	7	.	5	1	27
Criminal Deviate Conduct	.	2	3	5
Criminal Recklessness	3	.	3
Dealing In Cocaine Or Narcotic Drug	.	63	39	.	.	.	34	8	11	12	.	167
Dealing In Methamphetamine	.	24	28	.	.	.	54	22	24	13	.	165
Dealing In Schedule I, II, or III Controlled Substance	.	5	19	1	1	.	26
Dealing In Schedule IV Controlled Substance	.	.	2	2	.	1	.	5
Dealing Possessing Look-Alike Substance	.	.	.	1	3	2	6
Disarming A Law Enforcement Officer	1	.	1	.	2
Domestic Battery	13	3	16
Escape	6	8	14
Fail To Return To Accident Resulting in Serious Injury	4	.	.	.	4
Failure To Register As A Sex Offender	.	.	.	1	9	2	12
Failure To Return Lawful Detention/Escape	.	.	.	1	1
Firearm Within 1 Mile School Property Without License	.	.	.	1	1
Forgery,Counterfeiting,Application Fraud	.	.	.	7	1	8
Fraud	1	1
Fraud On A Financial Institution	4	.	4
Handgun Violation	16	.	16
Identity Deception	1	1

INDIANA DEPARTMENT OF CORRECTION
ADULT OFFENDERS
by Most Serious Offense

Correctional Industrial Facility												
Most Serious Offense	Murder	FA	FB	FC	FD	F1	F2	F3	F4	F5	F6	Total
Intimidation	5	1	6
Kidnapping	.	7	2	.	.	.	9
Manufacture Methamphetamine	1	.	.	1
Manufacturing Methamphetamine	1	1
Murder	69	69
Neglect Of A Dependent	.	.	2	1	1	4
Neglect Of A Dependent Resulting in Serious Injury	9	.	.	.	9
Neglect Of Dependent Resulting In Death	.	1	.	.	.	1	2
Non Support Of Dependent Child	.	.	.	3	2	5
Obliterating Handgun I.D.	2	.	2
Obstruction Of Justice	1	1
Operate Vehicle After Suspended For Life	.	.	.	2	14	.	16
Operating Vehicle Intoxicated Resulting in Death	.	.	3	1	.	4
Operating Vehicle Intoxicated-Prior Conviction	1	3	4
Operating Vehicle-Habit Traffic Violator	1	1
Opererating Vehicle While Intoxicated - Prior Conviction	1	1
Possess Destructive Device Or Explosive	.	1	1	2
Possession Of Cocaine Or Narcotic Drug	.	5	5	3	8	4	4	29
Possession Of Methamphetamine	.	.	3	6	4	10	9	32
Possession Of Syringes Or Needles	2	6	8
Prisoner Poss. Dangerous Device/Material	.	.	1	1
Promoting Prostitution	1	.	1
Rape	.	2	1	.	.	1	.	5	.	.	.	9
Reckless Homicide	.	.	.	1	2	.	3
Residential Entry	1	1
Resisting Law Enforcement	3	3
Robbery	.	14	68	5	.	.	10	76	.	16	.	189
Sexual Misconduct With A Minor	.	.	4	1	.	.	5
Stalking	1	1	2
Theft,Receiving Stolen Property	1	8	9
Trafficking With An Inmate	2	.	2
Unlawful Firearm Poss By Serious Felon	.	.	28	27	.	.	55
Vicarious Sexual Gratification	.	.	1	1
Voluntary Manslaughter	.	19	2	.	.	.	6	27
Total	69	237	343	43	4	11	131	203	129	225	66	1461

INDIANA DEPARTMENT OF CORRECTION
ADULT OFFENDERS
by Most Serious Offense

Chain O'Lakes Correctional Facility											
Most Serious Offense	FA	FB	FC	FD	F1	F2	F3	F4	F5	F6	Total
Accident Fail To Stop Resulting in Serious Injury or Death	1	.	1
Aggravated Battery	1	.	.	.	1
Aiding Inducing/Causing An Offense	1	1	.	2
Attempt To Commit Felony	.	1	1
Battery	4	.	4
Burglary	.	3	.	.	.	1	1	7	8	.	20
Conspiracy	1	.	1
Corrupt Business Influence	4	.	4
Criminal Confinement	1	.	1
Criminal Recklessness	1	1
Dealing In Cocaine Or Narcotic Drug	2	4	2	7	4	.	19
Dealing In Marijuana, Hash, or Hash Oil	2	.	2
Dealing In Methamphetamine	4	6	1	.	9	.	20
Dealing In Schedule I, II, or III Controlled Substance	.	2	1	.	1	.	4
Domestic Battery	1	.	1
Handgun Violation	5	.	5
Identity Deception	1	1
Manufacture Methamphetamine	1	.	.	1
Non Support Of Dependent Child	2	.	2
Operate Vehicle After Suspended For Life	13	.	13
Operating Vehicle Intoxicated-Prior Conviction	.	.	.	1	1
Operating Vehicle-Habit Traffic Violator	1	1
Possession Of A Controlled Substance	.	.	1	1
Possession Of Cocaine Or Narcotic Drug	.	1	1	2
Possession Of Methamphetamine	.	.	1	.	.	.	1	2	3	4	11
Robbery	.	3	1	.	.	.	1	.	2	.	7
Theft,Receiving Stolen Property	.	.	.	1	3	4
Trafficking With An Inmate	1	.	1
Unlawful Firearm Poss By Serious Felon	2	.	.	2
Total	6	20	3	2	0	1	8	20	63	11	134

INDIANA DEPARTMENT OF CORRECTION
ADULT OFFENDERS
by Most Serious Offense

Edinburgh Correctional Facility												
Most Serious Offense	FA	FB	FC	FD	F1	F2	F3	F4	F5	F6	HO	Total
Aiding Inducing/Causing An Offense	1	1
Attempt To Commit Felony	1	.	2	.	.	3
Auto Theft, Receiving Stolen Auto Parts	.	.	.	1	1	1	.	3
Battery	3	.	.	3
Burglary	.	9	3	.	.	.	1	29	25	.	.	67
Conspiracy	.	1	1	2	.	.	4
Criminal Confinement	1	.	.	1
Dealing In Cocaine Or Narcotic Drug	9	11	.	.	.	3	2	8	11	.	.	44
Dealing In Marijuana, Hash, or Hash Oil	1	1	.	2
Dealing In Methamphetamine	4	12	.	.	.	2	3	12	21	.	.	54
Dealing In Schedule I, II, or III Controlled Substance	2	5	2	2	.	.	11
Dealing In Schedule IV Controlled Substance	.	.	1	1
Dealing Possessing Look-Alike Substance	1	.	.	1
Domestic Battery	1	.	1
Fail To Return To Accident Resulting in Serious Injury	1	1
Felon Fraud in Offer	1	.	.	.	1
Fraud On A Financial Institution	.	.	1	2	.	.	3
Handgun Violation	13	.	.	13
Home Improvement Fraud Offenses	.	.	1	1	.	.	2
Neglect Of A Dependent	1	1	.	2
Non Support Of Dependent Child	.	.	2	1	3	2	.	8
Obliterating Handgun I.D.	.	.	1	1
Operate Vehicle After Suspended For Life	22	.	.	22
Operating Vehicle Intoxicated Resulting in Death	3	1	.	.	4
Operating Vehicle Intoxicated Resulting in Serious Bodily Injury	1	1	.	2
Opererating Vehicle While Intoxicated - Prior Conviction	6	.	6
Pharmacy Robbery	1	.	.	.	1
Possess Of Precursors	1	.	1
Possession Of A Controlled Substance	.	.	.	1	1
Possession Of Cocaine Or Narcotic Drug	1	1	4	2	.	8
Possession Of Methamphetamine	4	5	16	15	.	40
Possession Of Syringes Or Needles	1	3	.	4
Possession Or Use Of Legend Drug	1	.	.	1
Resisting Law Enforcement	2	.	2
Robbery	.	4	1	.	.	.	3	.	1	.	.	9
Theft,Receiving Stolen Property	1	4	.	5
Trafficking With An Inmate	3	.	.	3
Unlawful Firearm Poss By Serious Felon	7	.	.	.	7
Total	15	42	10	3	0	6	16	70	141	40	0	343

INDIANA DEPARTMENT OF CORRECTION
ADULT OFFENDERS
by Most Serious Offense

Heritage Trail Correctional Facility													
Most Serious Offense	Murder	FA	FB	FC	FD	F1	F2	F3	F4	F5	F6	HO	Total
Accident Fail To Stop Resulting in Serious Injury or Death	1	.	.	1
Aggravated Battery	.	.	3	9	12
Aiding Inducing/Causing An Offense	.	.	1	5	1	.	.	.	7
Arson	.	.	1	3	.	.	.	4
Assisting A Criminal	2	.	.	2
Attempt To Commit Felony	.	.	1	.	.	.	1	1	.	2	1	.	6
Auto Theft, Receiving Stolen Auto Parts	2	4	.	6
Battery	.	.	.	5	.	.	.	1	.	63	3	.	72
Burglary	.	.	14	2	.	.	2	3	46	36	.	.	103
Conspiracy	.	.	3	.	.	.	3	1	3	1	.	.	11
Corrupt Business Influence	.	.	.	2	3	.	.	5
Criminal Confinement	6	.	11	.	.	17
Criminal Gang Enhancement	1	1
Criminal Recklessness	5	1	.	6
Dealing In Cocaine Or Narcotic Drug	.	4	15	.	.	.	7	20	18	14	.	.	78
Dealing In Marijuana, Hash, or Hash Oil	1	.	.	1
Dealing In Methamphetamine	.	.	14	.	.	.	5	16	20	17	.	.	72
Dealing In Schedule I, II, or III Controlled Substance	.	1	8	1	1	.	.	11
Dealing In Schedule IV Controlled Substance	1	1
Dealing Possessing Look-Alike Substance	3	.	.	3
Disarming A Law Enforcement Officer	2	.	.	2
Domestic Battery	1	37	9	.	47
Domestic Battery with Serious Bodily Injury Under Age 14	1	1
Escape	1	2	12	.	15
Fail To Return To Accident Resulting in Serious Injury	2	2
Failure To Return Lawful Detention/Escape	1	1
Forgery,Counterfeiting,Application Fraud	.	.	.	2	5	.	7
Fraud On A Financial Institution	4	.	.	4
Handgun Violation	.	.	.	1	44	.	.	45
Home Improvement Fraud Offenses	.	.	.	1	1
Identity Deception	1	.	1
Intimidation	.	.	.	2	10	4	.	16
Invasion Of Privacy	2	.	2
Involuntary Manslaughter	2	.	.	2
Kidnapping	.	1	1
Manufacture Methamphetamine	1	.	.	.	1
Murder	1	1
Neglect Of A Dependent Resulting in Serious Injury	1	1
Non Support Of Dependent Child	.	.	.	8	1	1	.	.	10

INDIANA DEPARTMENT OF CORRECTION
 ADULT OFFENDERS
 by Most Serious Offense

Heritage Trail Correctional Facility													
Most Serious Offense	Murder	FA	FB	FC	FD	F1	F2	F3	F4	F5	F6	HO	Total
Obliterating Handgun I.D.	1	.	.	1

INDIANA DEPARTMENT OF CORRECTION
ADULT OFFENDERS
by Most Serious Offense

Heritage Trail Correctional Facility													
Most Serious Offense	Murder	FA	FB	FC	FD	F1	F2	F3	F4	F5	F6	HO	Total
Operate Vehicle After Suspended For Life	.	.	.	1	41	.	.	42
Operating Vehicle Intoxicated Resulting in Death	1	3	.	.	4
Operating Vehicle Intoxicated Resulting in Serious Bodily Injury	2	1	.	3
Operating Vehicle Intoxicated-Prior Conviction	2	.	2
Operating Vehicle-Habit Traffic Violator	1	.	1
Opererating Vehicle While Intoxicated - Prior Conviction	7	.	7
Possession Of A Controlled Substance	1	1
Possession Of Cocaine Or Narcotic Drug	.	1	1	2	.	.	.	1	1	11	4	.	21
Possession Of Methamphetamine	.	.	.	2	.	.	.	3	6	22	11	.	44
Possession Of Syringes Or Needles	4	.	4
Possession Or Use Of Legend Drug	1	1	.	2
Reckless Homicide	6	.	.	6
Residential Entry	2	.	2
Resisting Law Enforcement	1	4	.	5
Robbery	.	.	7	1	.	.	3	36	.	13	.	.	60
Stalking	5	.	.	5
Strangulation	1	1	4	.	6
Synthetic Identity Deception	1	.	1
Theft,Receiving Stolen Property	1	6	14	.	21
Trafficking With An Inmate	2	.	.	2
Unlawful Firearm Poss By Serious Felon	.	.	2	37	.	.	.	39
Voluntary Manslaughter	.	1	1
Welfare Fraud	1	1
Total	1	8	70	29	8	0	21	108	139	378	98	0	860

INDIANA DEPARTMENT OF CORRECTION
ADULT OFFENDERS
by Most Serious Offense

Indiana State Prison												
Most Serious Offense	Murder	FA	FB	FC	FD	F1	F2	F3	F4	F5	F6	Total
Accident Fail To Stop Resulting in Serious Injury or Death	1	1	.	2
Aggravated Battery	.	.	21	20	.	.	.	41
Aiding Inducing/Causing An Offense	.	5	6	1	.	1	3	3	1	.	.	20
Arson	.	.	1	.	.	.	1	.	2	.	.	4
Attempt To Commit Felony	.	80	13	.	.	24	1	6	.	1	.	125
Auto Theft, Receiving Stolen Auto Parts	1	1
Battery	.	5	4	6	.	.	1	1	.	23	.	40
Bribery	1	.	1
Burglary	.	50	62	6	.	7	8	1	28	21	.	183
Carjacking	.	.	5	5
Child Molesting	.	204	12	1	.	67	.	2	4	.	.	290
Conspiracy	.	10	4	.	.	1	3	2	2	1	.	23
Corrupt Business Influence	.	.	.	1	2	.	3
Criminal Confinement	.	.	10	.	1	.	2	4	.	7	.	24
Criminal Deviate Conduct	.	22	3	25
Criminal Recklessness	1	2	.	3
Dealing In Cocaine Or Narcotic Drug	.	104	35	.	.	.	21	6	15	5	.	186
Dealing In Marijuana, Hash, or Hash Oil	1	.	1
Dealing In Methamphetamine	.	22	18	.	.	.	29	8	10	6	.	93
Dealing In Schedule I, II, or III Controlled Substance	.	4	12	.	.	.	1	.	.	1	.	18
Dealing Possessing Look-Alike Substance	1	1	2
Domestic Battery	10	1	11
Escape	5	6	11
Fail To Return To Accident Resulting in Serious Injury	2	.	.	.	2
Failure To Return Lawful Detention/Escape	.	.	2	.	1	3
Forgery,Counterfeiting,Application Fraud	.	.	.	3	3
Fraud On A Financial Institution	3	.	3
Handgun Violation	.	.	.	1	16	.	17
Human Sexual Trafficking	.	.	1	1
Intimidation	5	.	5
Kidnapping	.	16	1	17
Maintaining Common Nuisance	2	2
Murder	725	725
Neglect Of A Dependent	.	.	2	1	1	4
Neglect Of A Dependent Resulting in Serious Injury	1	.	.	.	1

INDIANA DEPARTMENT OF CORRECTION
ADULT OFFENDERS
by Most Serious Offense

Indiana State Prison												
Most Serious Offense	Murder	FA	FB	FC	FD	F1	F2	F3	F4	F5	F6	Total
Neglect Of Dependent Resulting In Death	.	8	.	.	.	8	16
Non Support Of Dependent Child	.	.	.	3	1	.	4
Obstruction Of Justice	1	.	1
Operate Vehicle After Suspended For Life	.	.	.	2	10	.	12
Operating Vehicle Intoxicated Resulting in Death	.	.	2	1	1	1	.	5
Operating Vehicle Intoxicated Resulting in Serious Bodily Injury	.	.	.	1	1	.	2
Operating Vehicle With Schedule I in Body - Causing Death	.	.	.	1	1
Operating Vehicle-Habit Traffic Violator	1	1	2
Opererating Vehicle While Intoxicated - Prior Conviction	1	1
Possession Of A Controlled Substance	.	.	1	1
Possession Of Child Pornography	1	.	1
Possession Of Cocaine Or Narcotic Drug	.	6	1	2	3	3	1	16
Possession Of Methamphetamine	.	.	.	1	.	.	.	3	3	6	4	17
Possession Of Syringes Or Needles	1	1
Prisoner Poss. Dangerous Device/Material	.	.	1	1
Rape	.	53	10	.	.	10	.	2	.	.	.	75
Reckless Homicide	.	.	.	2	1	.	3
Resisting Law Enforcement	2	.	1	1	4
Robbery	.	40	70	6	.	.	8	42	.	9	.	175
Sexual Misconduct With A Minor	.	1	9	1	3	.	.	14
Stalking	1	.	1
Synthetic Identity Deception	1	1
Theft,Receiving Stolen Property	1	5	6
Trafficking With An Inmate	2	.	2
Unlawful Firearm Poss By Serious Felon	.	.	19	25	.	.	44
Voluntary Manslaughter	.	53	4	.	.	.	7	64
Welfare Fraud	.	.	.	1	1
Total	725	683	328	38	5	118	86	107	98	151	27	2366

INDIANA DEPARTMENT OF CORRECTION
ADULT OFFENDERS
by Most Serious Offense

Indiana Women's Prison												
Most Serious Offense	Murder	FA	FB	FC	FD	F1	F2	F3	F4	F5	F6	Total
Accident Fail To Stop Resulting in Serious Injury or Death	1	.	1
Aggravated Battery	.	.	2	9	.	.	.	11
Aiding Inducing/Causing An Offense	.	5	3	.	.	1	1	4	1	5	.	20
Arson	.	1	2	.	.	.	1	.	3	.	.	7
Assisting A Criminal	1	.	1
Attempt To Commit Felony	.	7	1	.	.	2	4	2	1	6	.	23
Auto Theft, Receiving Stolen Auto Parts	1	1
Battery	.	2	.	1	24	4	31
Battery To A Child Causing Death	.	1	1
Burglary	.	1	6	1	.	2	1	.	28	11	.	50
Child Molesting	.	.	1	.	.	1	2
Conspiracy	.	3	6	.	.	1	4	3	.	2	.	19
Controlled Substance Registration	.	.	.	1	1	2
Conversion	1	.	1
Corrupt Business Influence	3	.	3
Criminal Confinement	.	.	1	1	.	.	.	3	.	.	.	5
Criminal Deviate Conduct	.	1	1
Criminal Recklessness	.	.	.	1	2	1	4
Dealing In Cocaine Or Narcotic Drug	.	8	11	.	.	.	5	3	8	9	.	44
Dealing In Methamphetamine	.	10	15	.	.	.	25	19	25	9	.	103
Dealing In Schedule I, II, or III Controlled Substance	.	3	8	.	.	.	1	2	4	.	.	18
Dealing In Schedule IV Controlled Substance	.	.	.	1	1	.	2
Dealing Possessing Look-Alike Substance	1	.	1
Domestic Battery	7	1	8
Escape	8	13	21
Forgery,Counterfeiting,Application Fraud	.	.	.	7	7
Fraud	1	1
Fraud On A Financial Institution	.	.	.	1	6	.	7
Handgun Violation	2	.	2
Identity Deception	1	1
Incest	.	.	1	1
Intimidation	1	.	1
Kidnapping	1	.	1	.	2
Maintaining Common Nuisance	1	1

INDIANA DEPARTMENT OF CORRECTION
ADULT OFFENDERS
by Most Serious Offense

Indiana Women's Prison												
Most Serious Offense	Murder	FA	FB	FC	FD	F1	F2	F3	F4	F5	F6	Total
Murder	70	70
Neglect Of A Dependent	.	.	1	4	.	5
Neglect Of A Dependent Resulting In Serious Injury	8	.	.	.	8
Neglect Of Dependent Resulting In Death	.	11	.	.	.	8	19
Non Support Of Dependent Child	.	.	.	2	1	.	3
Operate Vehicle After Suspended For Life	7	.	7
Operating Vehicle Intoxicated Resulting In Death	.	.	1	3	.	.	4
Operating Vehicle Intoxicated Resulting In Serious Bodily Injury	1	.	1
Operating Vehicle Intoxicated-Prior Conviction	1	2	3
Opererating Vehicle While Intoxicated - Prior Conviction	4	4
Possess Chemical Reagents Or Precursors	.	.	.	1	1
Possession Of A Controlled Substance	1	1
Possession Of Cocaine Or Narcotic Drug	.	.	2	.	2	.	.	1	.	3	5	13
Possession Of Methamphetamine	2	9	15	19	45
Possession Of Syringes Or Needles	2	6	8
Possession Or Use Of Legend Drug	.	.	.	1	1	2
Promoting Prostitution Under Age 18	.	.	1	1
Reckless Homicide	2	.	2
Resisting Law Enforcement	2	2
Robbery	.	4	8	1	.	.	7	21	.	8	.	49
Sexual Misconduct With A Minor	1	.	1
Theft,Receiving Stolen Property	1	14	15
Trafficking With An Inmate	4	.	4
Unlawful Firearm Poss By Serious Felon	.	.	2	4	.	.	6
Voluntary Manslaughter	.	9	1	.	.	.	5	
Total	70	66	73	19	5	15	54	78	86	149	77	692

INDIANA DEPARTMENT OF CORRECTION
ADULT OFFENDERS
by Most Serious Offense

Madison Correctional Facility													
Most Serious Offense	Murder	FA	FB	FC	FD	F1	F2	F3	F4	F5	F6	HO	Total
Aggravated Battery	.	.	1	1	2
Aiding Inducing/Causing An Offense	.	1	2	4	4	8	.	.	19
Arson	.	.	1	4	.	.	.	5
Attempt To Commit Felony	.	4	1	1	.	.	.	1	3	4	.	.	14
Battery	.	.	1	1	.	12	1	.	15
Burglary	.	1	12	5	.	.	1	.	38	10	.	.	67
Conspiracy	.	1	6	.	.	.	3	4	3	4	.	.	21
Corrupt Business Influence	.	.	.	1	7	.	.	8
Dealing In Cocaine Or Narcotic Drug	.	5	9	.	.	.	7	12	27	27	.	.	87
Dealing In Methamphetamine	.	9	23	.	.	.	26	35	56	33	.	.	182
Dealing In Schedule I, II, or III Controlled Substance	.	5	30	.	.	.	2	3	5	4	.	.	49
Dealing In Schedule IV Controlled Substance	.	.	.	1	1
Disarming A Law Enforcement Officer	1	.	.	1
Fail To Return To Accident Resulting in Serious Injury	1	1
Forgery,Counterfeiting,Application Fraud	.	.	.	7	3	.	10
Fraud	1	.	1
Fraud On A Financial Institution	9	.	.	9
Handgun Violation	3	.	.	3
Identity Deception	1	1	.	2
Intimidation	1	.	.	1
Invasion Of Privacy	1	.	1
Maintaining Common Nuisance	1	2	.	3
Manufacture Methamphetamine	1	1	.	.	.	2
Mischief	1	1
Murder	7	7
Neglect Of A Dependent	.	.	4	6	1	.	11
Neglect Of A Dependent Resulting in Serious Injury	2	2
Non Support Of Dependent Child	1	1	.	.	2
Obstruction Of Justice	1	.	1
Operate Vehicle After Suspended For Life	.	.	.	2	9	.	.	11
Operating Vehicle Intoxicated Resulting in Death	.	.	2	6	3	.	.	11
Operating Vehicle Intoxicated Resulting in Serious Bodily Injury	1	.	.	1
Operating Vehicle Intoxicated w/ Previous Conviction	.	.	.	1	1
Operating Vehicle Intoxicated-Prior Conviction	1	.	1
Operating Vehicle-Habit Traffic Violator	1	.	1
Opererating Vehicle While Intoxicated - Prior Conviction	3	.	3
Possess of Precursors	1	.	.	1

INDIANA DEPARTMENT OF CORRECTION
ADULT OFFENDERS
by Most Serious Offense

Madison Correctional Facility													
Most Serious Offense	Murder	FA	FB	FC	FD	F1	F2	F3	F4	F5	F6	HO	Total
Possession Of Cocaine Or Narcotic Drug	.	.	1	2	.	.	.	2	4	20	7	.	36
Possession Of Dangerous Device	1	.	.	1
Possession Of Methamphetamine	.	.	1	10	18	36	24	.	89
Possession Of Syringes Or Needles	10	.	10
Possession Or Use Of Legend Drug	3	3	.	6
Prostitution	1	.	1
Reckless Homicide	1	.	.	1
Robbery	.	1	4	.	.	.	1	9	.	6	.	.	21
Synthetic Identity Deception	1	.	1
Theft,Receiving Stolen Property	1	4	13	.	18
Trafficking With An Inmate	.	.	.	1	7	.	.	8
Unlawful Firearm Poss By Serious Felon	.	.	1	1	.	.	.	2
Voluntary Manslaughter	.	2	2
Welfare Fraud	.	.	.	2	2
	7	29	99	23	4	0	40	86	170	223	75	0	756

INDIANA DEPARTMENT OF CORRECTION
ADULT OFFENDERS
by Most Serious Offense

Miami Correctional Facility												
Most Serious Offense	Murder	FA	FB	FC	FD	F1	F2	F3	F4	F5	F6	Total
Accident Fail To Stop Resulting in Serious Injury or Death	.	.	1	2	.	3
Aggravated Battery	.	.	44	.	.	2	.	87	.	.	.	133
Aiding Inducing/Causing An Offense	.	5	5	.	.	2	6	12	1	2	.	33
Arson	.	3	9	12	.	.	24
Assisting A Criminal	1	.	1
Attempt To Commit Felony	.	58	16	.	.	34	10	21	2	4	.	145
Auto Theft, Receiving Stolen Auto Parts	.	.	.	4	2	8	14
Battery	.	3	7	13	.	.	.	5	3	62	5	98
Battery By Bodily Waste	.	.	1	1
Burglary	.	43	162	17	.	6	47	10	97	38	.	420
Carjacking	.	.	5	5
Causing Suicide	.	.	1	1
Child Exploitation	.	.	.	1	1
Child Molesting	.	78	17	3	.	77	1	7	13	.	.	196
Conspiracy	.	18	12	.	.	1	14	5	1	4	.	55
Conversion	1	.	1
Corrupt Business Influence	.	.	.	1	4	.	5
Criminal Confinement	.	.	17	2	.	.	2	33	.	6	.	60
Criminal Deviate Conduct	.	4	1	5
Criminal Recklessness	.	.	.	1	7	2	10
Dealing In Cocaine Or Narcotic Drug	.	128	64	.	.	.	102	21	18	13	.	346
Dealing In Marijuana, Hash, or Hash Oil	2	.	2
Dealing In Methamphetamine	.	36	53	.	.	.	148	29	35	15	.	316
Dealing In Schedule I, II, or III Controlled Substance	.	19	36	.	.	.	5	.	.	1	.	61
Dealing In Schedule IV Controlled Substance	.	.	.	1	1
Dealing Possessing Look-Alike Substance	.	.	.	1	1
Domestic Battery	12	2	14
Domestic Battery Resulting in Death Under 14	1	1
Domestic Battery with Serious Bodily Injury Under Age 14	1	.	.	.	1
Escape	1	11	3	15
Fail To Return To Accident Resulting in Serious Injury	2	.	.	.	2
Fail To Stop After Accident - Operating Vehicle Intoxicated	.	.	1	1
Failure To Register As A Sex Offender	.	.	.	1	9	.	10
Failure To Return Lawful Detention/Escape	.	.	3	3	1	7
Forgery,Counterfeiting,Application Fraud	.	.	.	6	2	8

INDIANA DEPARTMENT OF CORRECTION
ADULT OFFENDERS
by Most Serious Offense

Miami Correctional Facility												
Most Serious Offense	Murder	FA	FB	FC	FD	F1	F2	F3	F4	F5	F6	Total
Fraud	1	1	2
Fraud On A Financial Institution	.	.	.	1	4	.	5
Handgun Violation	24	.	24
Identity Deception	1	1
Incest	.	.	1	1
Intimidation	.	.	.	2	6	.	8
Kidnapping	.	9	6	6	.	1	.	22
Murder	226	226
Neglect Of A Dependent	.	.	4	1	.	5
Neglect Of A Dependent Resulting In Serious Injury	8	.	.	.	8
Neglect Of Dependent Resulting In Death	.	5	.	.	.	8	13
Non Support Of Dependent Child	.	.	.	1	3	.	4
Obliterating Handgun I.D.	1	.	1
Operate Vehicle After Suspended For Life	.	.	.	1	16	.	17
Operating Vehicle Intoxicated Resulting In Death	.	.	4	1	4	1	.	10
Operating Vehicle Intoxicated-Prior Conviction	1	1	2
Operating Vehicle-Habit Traffic Violator	1	1
Opererating Vehicle While Intoxicated - Prior Conviction	3	3
Pharmacy Robbery	1	.	.	1
Possess Chemical Reagents Or Precursors	.	.	.	1	1
Possess Destructive Device Or Explosive	3	3
Possession Of A Controlled Substance	1	1
Possession Of Cocaine Or Narcotic Drug	.	8	6	1	.	.	.	9	5	2	3	34
Possession Of Dangerous Device	3	2	.	5
Possession Of Methamphetamine	.	1	6	11	9	9	5	41
Possession Of Syringes Or Needles	1	2	3
Possession Or Use Of Legend Drug	1	1
Prisoner Poss. Dangerous Device/Material	.	.	1	1
Rape	.	10	2	.	.	18	.	5	.	.	.	35
Reckless Homicide	3	.	3
Resisting Law Enforcement	.	.	2	.	1	.	.	3	.	1	5	12
Robbery	.	35	148	5	.	.	28	187	.	17	.	420
Sexual Misconduct With A Minor	.	.	3	6	2	.	11
Stalking	.	.	2	1	3
Theft,Receiving Stolen Property	1	5	6

INDIANA DEPARTMENT OF CORRECTION
ADULT OFFENDERS
by Most Serious Offense

Miami Correctional Facility												
Most Serious Offense	Murder	FA	FB	FC	FD	F1	F2	F3	F4	F5	F6	Total
Trafficking With An Inmate	.	.	.	1	3	.	4
Unlawful Firearm Poss By Serious Felon	.	.	43	61	.	.	104
Vicarious Sexual Gratification	1	.	.	1
Voluntary Manslaughter	.	38	3	.	.	.	30	
Welfare Fraud	1	
Total	226	501	680	69	7	148	403	462	273	293	50	3112

INDIANA DEPARTMENT OF CORRECTION
ADULT OFFENDERS
by Most Serious Offense

New Castle Correctional Facility												
Most Serious Offense	Murder	FA	FB	FC	FD	F1	F2	F3	F4	F5	F6	Total
Accident Fail To Stop Resulting in Serious Injury or Death	2	.	2
Aggravated Battery	.	.	4	.	.	1	.	5	.	.	.	10
Aiding Inducing/Causing An Offense	.	2	4	.	.	.	1	.	1	2	.	10
Arson	.	.	4	5	.	.	9
Assisting A Criminal	1	.	1
Attempt To Commit Felony	.	48	26	2	.	3	1	9	6	6	.	101
Auto Theft, Receiving Stolen Auto Parts	.	.	.	1	1	2	4
Battery	.	3	5	6	20	1	35
Burglary	.	20	49	8	.	.	8	2	32	20	.	139
Carjacking	.	.	1	1
Check Fraud	.	.	.	1	1
Child Exploitation	.	.	.	8	10	32	.	50
Child Molesting	.	603	284	104	.	22	3	105	242	.	.	1363
Child Seduction	.	.	.	2	5	.	7
Child Solicitation	.	.	1	3	1	.	.	.	16	28	.	49
Conspiracy	.	5	6	1	.	.	.	4	1	3	.	20
Corrupt Business Influence	3	.	3
Criminal Confinement	.	.	11	3	.	.	.	4	.	8	.	26
Criminal Deviate Conduct	.	47	52	99
Criminal Recklessness	.	.	.	1	2	.	3
Dangerous Control Of A Handgun	1	.	1
Dealing In Cocaine Or Narcotic Drug	.	29	19	.	.	.	4	2	13	7	.	74
Dealing In Methamphetamine	.	3	25	.	.	.	5	1	8	18	.	60
Dealing In Schedule I, II, or III Controlled Substance	.	5	9	1	.	.	.	15
Dealing Possessing Look-Alike Substance	.	.	.	1	1	.	2
Disarming A Law Enforcement Officer	1	.	1
Dissemination Of Matter Harmful To Minor	1	1
Domestic Battery	1	1	2
Escape	2	2	4
Fail To Return To Accident Resulting in Serious Injury	1	.	.	.	1
Failure To Register As A Sex Offender	.	.	.	2	17	1	20
Forgery,Counterfeiting,Application Fraud	.	.	.	8	1	9
Fraud On A Financial Institution	1	.	1

INDIANA DEPARTMENT OF CORRECTION
ADULT OFFENDERS
by Most Serious Offense

New Castle Correctional Facility												
Most Serious Offense	Murder	FA	FB	FC	FD	F1	F2	F3	F4	F5	F6	Total
Habitual Offender Substance Abuse	1	1
Handgun Violation	11	.	11
Home Improvement Fraud Offenses	.	.	.	1	1
Human Sexual Trafficking	1	2	.	.	3
Incest	.	.	16	6	2	4	.	28
Intimidation	.	.	.	2	1	3
Kidnapping	.	11	1	.	3	.	15
Manufacture Methamphetamine	1	.	.	1
Murder	76	76
Neglect Of A Dependent	.	.	.	1	1	.	2
Neglect Of A Dependent Resulting in Serious Injury	1	.	.	.	1
Non Support Of Dependent Child	.	.	.	1	1	2	1	5
Operate Vehicle After Suspended For Life	.	.	.	2	14	.	16
Operating Vehicle Intoxicated	0
Operating Vehicle Intoxicated Resulting in Death	.	.	1	3	.	4
Operating Vehicle Intoxicated-Prior Conviction	1	1
Opererating Vehicle While Intoxicated - Prior Conviction	2	2
Possess Chemical Reagents Or Precursors	.	.	.	1	1
Possession Of A Machine Gun Or Bomb	1	.	1
Possession Of Child Pornography	18	1	19
Possession Of Cocaine Or Narcotic Drug	.	.	3	6	4	13
Possession Of Methamphetamine	.	.	1	1	1	16	7	26
Possession Of Syringes Or Needles	4	4
Promoting Prostitution Under Age 18	.	.	2	2
Rape	.	78	92	.	.	2	.	82	.	.	.	254
Reckless Homicide	.	.	.	2	2
Residential Entry	1	1
Resisting Law Enforcement	1	.	.	.	1
Robbery	.	12	56	4	.	.	5	28	.	7	.	112
Sexual Battery	.	.	.	1	2	.	.	.	9	.	1	13
Sexual Misconduct With A Minor	.	1	139	28	1	.	.	.	106	64	.	339
Sexual Misconduct w/ Service Provider	2	.	2
Theft,Receiving Stolen Property	10	10

INDIANA DEPARTMENT OF CORRECTION
ADULT OFFENDERS
by Most Serious Offense

New Castle Correctional Facility												
Most Serious Offense	Murder	FA	FB	FC	FD	F1	F2	F3	F4	F5	F6	Total
Unlawful Firearm Poss By Serious Felon	.	.	10	8	.	.	18
Vicarious Sexual Gratification	.	.	1	1	3	1	.	6
Voluntary Manslaughter	.	9	1	.	.	.	1	11
Total	76	876	822	200	8	28	28	250	466	335	40	3129

INDIANA DEPARTMENT OF CORRECTION
ADULT OFFENDERS
by Most Serious Offense

Pendleton Correctional Facility												
Most Serious Offense	Murder	FA	FB	FC	FD	F1	F2	F3	F4	F5	F6	Total
Aggravated Battery	.	.	13	19	.	.	.	32
Aiding Inducing/Causing An Offense	.	3	.	.	.	3	.	1	.	1	.	8
Arson	.	3	5	4	.	.	12
Attempt To Commit Felony	.	66	8	1	.	22	2	3	1	1	.	104
Auto Theft, Receiving Stolen Auto Parts	1	2	3
Battery	.	1	2	5	.	.	1	3	.	17	2	31
Burglary	.	30	60	10	.	6	10	3	29	12	.	160
Carjacking	.	.	4	4
Check Deception	1	.	1
Child Molesting	.	200	8	.	.	48	.	2	3	.	.	261
Conspiracy	.	8	1	.	.	1	2	1	.	.	.	13
Corrupt Business Influence	1	.	1
Criminal Confinement	.	.	18	1	.	.	1	5	.	3	.	28
Criminal Deviate Conduct	.	33	33
Criminal Recklessness	.	.	.	1	1	2	4
Dealing In Cocaine Or Narcotic Drug	.	53	13	.	.	.	13	4	5	3	.	91
Dealing In Marijuana, Hash, or Hash Oil	1	.	1
Dealing In Methamphetamine	.	16	12	.	.	.	9	5	10	7	.	59
Dealing In Schedule I, II, or III Controlled Substance	.	3	11	1	.	.	15
Dealing In Schedule IV Controlled Substance	1	.	.	.	1
Disarming A Law Enforcement Officer	2	.	2
Domestic Battery	4	.	4
Escape	2	2	4
Failure To Register As A Sex Offender	5	.	5
Failure To Return Lawful Detention/Escape	.	.	.	1	1
Forgery,Counterfeiting,Application Fraud	.	.	.	2	1	3
Fraud	1	1
Fraud On A Financial Institution	2	.	2
Handgun Violation	.	.	.	1	10	.	11
Human Sexual Trafficking	1	1
Incest	.	.	1	1	.	.	2
Intimidation	8	.	8
Kidnapping	.	12	1	1	.	.	.	14

INDIANA DEPARTMENT OF CORRECTION
ADULT OFFENDERS
by Most Serious Offense

Pendleton Correctional Facility												
Most Serious Offense	Murder	FA	FB	FC	FD	F1	F2	F3	F4	F5	F6	Total
Maintaining Common Nuisance	2	2
Manufacture Methamphetamine	1	.	.	.	1
Murder	538	538
Neglect Of A Dependent	.	.	2	1	3
Neglect Of A Dependent Resulting in Serious Injury	3	.	.	.	3
Neglect Of Dependent Resulting In Death	.	5	.	.	.	4	9
Non Support Of Dependent Child	.	.	.	1	1
Obliterating Handgun I.D.	1	.	1
Operate Vehicle After Suspended For Life	9	.	9
Operating Vehicle Intoxicated Resulting in Death	.	.	1	3	.	.	4
Opererating Vehicle While Intoxicated - Prior Conviction	1	1
Perjury	1	1
Possess Of Precursors	1	1
Possession Of Cocaine Or Narcotic Drug	.	.	2	1	4	1	8
Possession Of Dangerous Device	1	.	1
Possession Of Methamphetamine	.	.	4	1	.	.	.	3	3	3	5	19
Possession Of Syringes Or Needles	1	1	2
Prisoner Poss. Dangerous Device/Material	.	.	1	1
Rape	.	44	7	.	.	11	.	4	.	.	.	66
Resisting Law Enforcement	.	.	1	.	.	.	1	1	.	.	2	5
Robbery	.	27	67	1	.	.	15	31	.	6	.	147
Sexual Misconduct With A Minor	.	.	7	7
Stalking	2	1	.	3
Strangulation	1	1
Theft,Receiving Stolen Property	.	.	.	1	1	1	3	6
Trafficking With An Inmate	3	.	
Unlawful Firearm Poss By Serious Felon	.	.	15	13	.	.	
Voluntary Manslaughter	.	34	3	.	.	.	8	
Total	538	538	266	26	1	95	64	91	76	112	29	1836

INDIANA DEPARTMENT OF CORRECTION
ADULT OFFENDERS
by Most Serious Offense

Plainfield Correctional Facility												
Most Serious Offense	Murder	FA	FB	FC	FD	F1	F2	F3	F4	F5	F6	Total
Accident Fail To Stop Resulting in Serious Injury or Death	3	.	3
Aggravated Battery	.	.	9	18	.	.	.	27
Aiding Inducing/Causing An Offense	.	3	7	3	.	4	.	17
Arson	.	1	1	4	.	.	6
Assisting A Criminal	2	1	3
Attempt To Commit Felony	.	31	8	7	3	3	1	53
Auto Theft, Receiving Stolen Auto Parts	3	7	10
Battery	.	1	4	10	.	.	.	4	1	46	3	69
Bribery	1	.	1
Burglary	.	7	77	12	.	.	7	2	71	52	.	228
Carjacking	.	.	2	2
Check Deception	1	1
Check Fraud	1	.	1
Child Exploitation	.	.	.	1	1
Child Molesting	.	5	3	1	3	.	.	12
Child Solicitation	1	.	1
Conspiracy	.	7	4	.	.	.	1	3	1	5	1	22
Corrupt Business Influence	.	.	.	3	1	.	4
Criminal Confinement	.	.	16	2	.	.	.	5	.	13	4	40
Criminal Deviate Conduct	.	2	2	4
Criminal Recklessness	.	.	.	2	5	1	8
Criminal Trespass	1	1
Dealing In Cocaine Or Narcotic Drug	.	39	46	.	.	.	19	17	18	15	.	154
Dealing In Methamphetamine	.	4	29	.	.	.	15	12	25	24	.	109
Dealing In Schedule I, II, or III Controlled Substance	.	3	23	.	.	.	1	2	2	1	.	32
Dealing In Schedule IV Controlled Substance	1	.	.	.	1
Dealing Possessing Look-Alike Substance	2	2
Dealing Substance Represented To Be Controlled Substance	1	1
Domestic Battery	23	5	28
Domestic Battery with Serious Bodily Injury Under Age 14	1	.	.	.	1
Escape	12	10	22
Fail To Return To Accident Resulting in Serious Injury	1	.	.	.	1
Failure To Register As A Sex Offender	.	.	.	2	14	4	20

INDIANA DEPARTMENT OF CORRECTION
ADULT OFFENDERS
by Most Serious Offense

Plainfield Correctional Facility												
Most Serious Offense	Murder	FA	FB	FC	FD	F1	F2	F3	F4	F5	F6	Total
Failure To Return Lawful Detention/Escape	.	.	.	1	1
Forgery,Counterfeiting,Application Fraud	.	.	.	7	1	8
Fraud	2	2
Fraud On A Financial Institution	.	.	.	5	5	.	10
Handgun Violation	.	.	.	1	30	.	31
Intimidation	16	5	21
Kidnapping	.	2	2
Maintaining Common Nuisance	1	1
Murder	63	63
Neglect Of A Dependent	.	.	1	1
Neglect Of A Dependent Resulting in Serious Injury	3	.	.	.	3
Neglect Of Dependent Resulting In Death	.	1	1
Non Support Of Dependent Child	.	.	.	4	1	1	6
Obstruction Of Justice	1	.	1
Operate Vehicle After Suspended For Life	.	.	.	1	26	.	27
Operating Vehicle Intoxicated Resulting in Death	3	.	.	3
Operating Vehicle Intoxicated Resulting in Serious Bodily Injury	2	.	2
Operating Vehicle Intoxicated-Prior Conviction	1	1	2
Operating Vehicle With Schedule I,II in Body - Causing Death	1	.	.	1
Operating Vehicle-Habit Traffic Violator	1	1
Opererating Vehicle While Intoxicated - Prior Conviction	4	4
Possession Of A Controlled Substance	.	.	.	1	1
Possession Of Cocaine Or Narcotic Drug	.	3	5	1	2	.	.	5	5	14	7	42
Possession Of Dangerous Device	2	.	.	2
Possession Of Methamphetamine	.	1	5	1	1	.	.	14	16	17	12	67
Possession Of Syringes Or Needles	9	9
Possession Or Use Of Legend Drug	1	.	1
Prisoner Poss. Dangerous Device/Material	.	.	1	1
Promoting Prostitution	1	.	1
Rape	.	5	2	7
Reckless Homicide	2	.	2
Residential Entry	3	3
Resisting Law Enforcement	.	.	.	1	1	.	.	1	.	.	4	7

INDIANA DEPARTMENT OF CORRECTION
ADULT OFFENDERS
by Most Serious Offense

Plainfield Correctional Facility												
Most Serious Offense	Murder	FA	FB	FC	FD	F1	F2	F3	F4	F5	F6	Total
Robbery	.	7	49	4	.	.	2	58	.	20	.	140
Sexual Misconduct With A Minor	.	1	1	2	1	.	5
Stalking	.	.	1	7	1	9
Strangulation	2	
Theft,Receiving Stolen Property	4	4	18	
Trafficking With An Inmate	.	.	.	1	3	.	
Unlawful Firearm Poss By Serious Felon	.	.	17	67	.	.	84
Voluntary Manslaughter	.	14	2	.	.	.	2	18
Total	63	137	315	61	10	0	47	157	224	380	113	1507

INDIANA DEPARTMENT OF CORRECTION
ADULT OFFENDERS
by Most Serious Offense

Putnamville Correctional Facility												
Most Serious Offense	Murder	FA	FB	FC	FD	F1	F2	F3	F4	F5	F6	Total
Accident Fail To Stop Resulting in Serious Injury or Death	2	.	2
Aggravated Battery	.	.	8	29	.	.	.	37
Aiding Inducing/Causing An Offense	.	2	4	1	.	.	3	1	1	3	.	15
Arson	.	.	4	1	10	.	.	15
Assisting A Criminal	1	.	1
Attempt To Commit Felony	.	13	5	1	.	.	.	10	2	7	1	39
Auto Theft, Receiving Stolen Auto Parts	.	.	.	1	1	10	12
Battery	.	.	2	4	.	.	.	3	.	78	6	93
Battery To A Child Causing Death	.	1	1
Bribery	1	.	1
Burglary	.	15	100	20	.	.	8	5	133	92	.	373
Carjacking	.	.	5	5
Carrying Handgun Without License	.	.	.	1	1
Child Exploitation	1	.	1
Child Molesting	.	2	7	2	.	.	.	1	.	.	.	12
Conspiracy	.	6	10	.	.	.	6	4	6	5	.	37
Contributing To The Delinquency Of Minor	1	1
Controlled Substance Registration	.	.	.	1	2	3
Conversion	1	.	1
Corrupt Business Influence	4	.	4
Criminal Confinement	.	.	10	2	.	.	.	11	.	12	1	36
Criminal Deviate Conduct	.	1	1
Criminal Recklessness	.	.	.	3	1	4	3	11
Dealing In Cocaine Or Narcotic Drug	.	25	67	.	.	.	37	24	33	26	.	212
Dealing In Marijuana, Hash, or Hash Oil	.	.	.	1	2	.	3
Dealing In Methamphetamine	.	8	39	.	.	.	28	38	50	39	.	202
Dealing In Schedule I, II, or III Controlled Substance	.	3	33	.	.	.	1	.	3	2	.	42
Dealing In Schedule IV Controlled Substance	.	.	.	1	.	.	.	1	1	.	.	3
Dealing Possessing Look-Alike Substance	1	3	4
Domestic Battery	33	5	38
Escape	1	17	26	44
Fail To Return To Accident Resulting in Serious Injury	3	.	.	.	3
Fail To Stop After Accident - Operating Vehicle Intoxicated	.	.	2	2
Failure To Register As A Sex Offender	35	2	37
Failure To Return Lawful Detention/Escape	.	.	.	1	1

INDIANA DEPARTMENT OF CORRECTION
ADULT OFFENDERS
by Most Serious Offense

Putnamville Correctional Facility												
Most Serious Offense	Murder	FA	FB	FC	FD	F1	F2	F3	F4	F5	F6	Total
Firearm Within 1 Mile School Property Without License	.	.	.	1	1
Forgery,Counterfeiting,Application Fraud	.	.	.	10	4	14
Fraud	3	3
Fraud On A Financial Institution	.	.	.	1	12	.	13
Handgun Violation	34	.	34
Human Sexual Trafficking	.	.	1	1
Identity Deception	1	1
Intimidation	.	.	.	2	24	2	28
Invasion Of Privacy	2	2
Involuntary Manslaughter	1	.	1
Kidnapping	.	4	3	.	3	1	11
Maintaining Common Nuisance	4	4
Manufacture Methamphetamine	1	.	.	1
Murder	50	50
Neglect Of A Dependent	.	.	.	1	5	1	7
Neglect Of A Dependent Resulting in Serious Injury	4	.	.	.	4
Neglect Of Dependent Resulting In Death	.	2	2
Non Support Of Dependent Child	.	.	.	8	1	2	2	13
Obliterating Handgun I.D.	1	.	1
Obstruction Of Justice	2	2	4
Operate Vehicle After Suspended For Life	.	.	.	3	53	.	56
Operating Vehicle Intoxicated	1	.	1
Operating Vehicle Intoxicated Resulting in Death	.	.	5	7	7	.	19
Operating Vehicle Intoxicated Resulting in Serious Bodily Injury	.	.	.	1	1	3	.	5
Operating Vehicle Intoxicated-Prior Conviction	4	4
Operating Vehicle While Intoxicated - Endangering Person	1	1
Operating Vehicle-Habit Traffic Violator	1	1
Opererating Vehicle While Intoxicated - Prior Conviction	9	9
Possess Chemical Reagents Or Precursors	.	.	.	2	2
Possess Destructive Device Or Explosive	1	.	1
Possession Of A Controlled Substance	.	.	.	1	1	2
Possession Of Cocaine Or Narcotic Drug	.	.	3	1	.	.	.	3	8	19	8	42
Possession Of Marijuana, Hash, Hash Oil	1	1
Possession Of Methamphetamine	.	1	8	14	14	41	26	104
Possession Of Syringes Or Needles	2	8	10

INDIANA DEPARTMENT OF CORRECTION
ADULT OFFENDERS
by Most Serious Offense

Putnamville Correctional Facility												
Most Serious Offense	Murder	FA	FB	FC	FD	F1	F2	F3	F4	F5	F6	Total
Possession Or Use Of Legend Drug	3	3
Promoting Prostitution	2	.	2
Rape	.	2	1	3
Reckless Homicide	.	.	.	2	3	.	5
Residential Entry	3	3
Resisting Law Enforcement	1	.	2	5	8
Robbery	.	10	71	5	.	.	4	76	.	19	.	185
Sale Of Unregistered Security	.	.	.	1	1
Sex Predator Unlawful Job Near Children	1	.	1
Sexual Battery	2	2
Sexual Misconduct With A Minor	3	1	.	4
Stalking	1	.	.	.	2	6	.	9
Strangulation	1	2	3
Synthetic Identity Deception	1	1
Terroristic Mischief	1	.	1
Theft,Receiving Stolen Property	3	3	20	26
Trafficking With An Inmate	.	.	.	3	7	.	10
Unlawful Firearm Poss By Serious Felon	.	.	32	92	.	.	124
Voluntary Manslaughter	.	15	7	.	.	.	4	26
Total	50	110	424	81	11	0	91	232	367	624	173	2163

INDIANA DEPARTMENT OF CORRECTION
ADULT OFFENDERS
by Most Serious Offense

Reception Diagnostic Center												
Most Serious Offense	Murder	FA	FB	FC	FD	F1	F2	F3	F4	F5	F6	Total
Accident Fail To Stop Resulting in Serious Injury or Death	1	.	1
Aggravated Battery	.	.	1	4	.	.	.	5
Aiding Inducing/Causing An Offense	.	.	2	1	3	.	6
Arson	.	.	1	5	.	.	6
Assisting A Criminal	1	.	1
Attempt To Commit Felony	.	1	1	.	.	2	.	2	.	2	.	8
Auto Theft, Receiving Stolen Auto Parts	1	1
Battery	.	.	.	3	.	.	.	1	.	35	2	41
Burglary	.	.	7	6	.	1	2	2	24	24	.	66
Child Molesting	.	5	11	4	.	8	.	3	14	.	.	45
Child Possession of Firearm	1	.	1
Conspiracy	.	.	1	.	.	.	4	1	.	3	1	10
Criminal Confinement	1	1	.	7	.	9
Criminal Deviate Conduct	.	.	1	1
Criminal Recklessness	2	1	3
Dealing In Cocaine Or Narcotic Drug	.	4	8	.	.	.	7	4	3	6	.	32
Dealing In Marijuana, Hash, or Hash Oil	2	2
Dealing In Methamphetamine	.	1	9	.	.	.	10	13	15	11	.	59
Dealing In Schedule I, II, or III Controlled Substance	.	.	3	2	.	2	.	7
Dealing In Schedule IV Controlled Substance	.	.	1	1
Dealing Possessing Look-Alike Substance	1	1	2
Disarming A Law Enforcement Officer	1	.	1
Domestic Battery	12	5	17
Escape	2	2	4
Fail To Return To Accident Resulting in Serious Injury	1	.	.	.	1
Failure To Appear	1	1
Failure To Register As A Sex Offender	14	2	16
Firearm Within 1 Mile School Property Without License	.	.	.	1	1
Forgery,Counterfeiting,Application Fraud	.	.	.	4	4	8
Fraud	1	1
Fraud On A Financial Institution	3	.	3
Handgun Violation	27	.	27
Intimidation	.	.	.	1	1	7	1	10
Kidnapping	1	.	.	.	1
Maintaining Common Nuisance	1	1
Murder	7	7
Neglect Of A Dependent	1	1	2
Neglect Of A Dependent Resulting in Serious Injury	1	.	.	.	1

INDIANA DEPARTMENT OF CORRECTION
ADULT OFFENDERS
by Most Serious Offense

Reception Diagnostic Center												
Most Serious Offense	Murder	FA	FB	FC	FD	F1	F2	F3	F4	F5	F6	Total
Neglect Of Dependent Resulting In Death	1	1
Non Support Of Dependent Child	.	.	.	4	4
Obliterating Handgun I.D.	2	.	2
Operate Vehicle After Suspended For Life	17	.	17
Operating Vehicle Intoxicated Resulting in Death	2	1	.	3
Operating Vehicle Intoxicated Resulting in Serious Bodily Injury	1	.	1
Operating Vehicle While Intoxicated - Endangering Person	1	1
Operating Vehicle-Habit Traffic Violator	1	5	6
Opererating Vehicle While Intoxicated - Prior Conviction	3	3
Possess Of Precursors	1	1
Possession Of Cocaine Or Narcotic Drug	2	2	5	2	11
Possession Of Dangerous Device	1	.	1
Possession Of Methamphetamine	5	6	19	23	53
Possession Of Syringes Or Needles	1	6	7
Possession Or Use Of Legend Drug	1	1
Promoting Prostitution	.	.	.	1	1
Rape	.	1	2	.	.	2	.	5	.	.	.	10
Residential Entry	3	3
Resisting Law Enforcement	2	9	11
Robbery	.	.	9	2	.	.	1	22	.	12	.	46
Sexual Misconduct With A Minor	.	.	6	4	5	.	15
Stalking	3	.	3
Theft,Receiving Stolen Property	3	3	11	17
Trafficking With An Inmate	.	.	.	1	1	.	2
Unlawful Firearm Poss By Serious Felon	.	.	5	19	.	.	24
Voluntary Manslaughter	.	1	1
Total	7	13	68	27	9	14	25	70	95	237	89	654

INDIANA DEPARTMENT OF CORRECTION
ADULT OFFENDERS
by Most Serious Offense

Rockville Correctional Facility												
Most Serious Offense	Murder	FA	FB	FC	FD	F1	F2	F3	F4	F5	F6	Total
Aggravated Battery	.	.	3	.	.	1	.	12	.	.	.	16
Aiding Inducing/Causing An Offense	.	3	6	2	.	2	6	3	5	5	.	32
Arson	.	1	1	1	3	.	.	6
Assisting A Criminal	1	1	2
Attempt To Commit Felony	.	8	1	.	.	3	7	3	1	7	.	30
Auto Theft, Receiving Stolen Auto Parts	4	4
Battery	.	1	.	.	1	.	2	5	.	42	1	52
Burglary	.	3	17	3	.	1	4	3	42	24	.	97
Carjacking	.	.	2	2
Check Fraud	1	1	2
Child Exploitation	1	.	1
Child Molesting	.	25	6	1	.	7	.	5	3	.	.	47
Child Solicitation	4	.	4
Conspiracy	.	8	3	.	.	1	9	6	2	6	.	35
Controlled Substance Registration	1	.	1
Corrupt Business Influence	.	.	.	1	3	.	4
Criminal Confinement	1	4	.	.	.	5
Criminal Deviate Conduct	.	3	1	4
Criminal Recklessness	1	.	1
Dealing In Cocaine Or Narcotic Drug	.	12	16	.	.	.	11	14	13	13	.	79
Dealing In Marijuana, Hash, or Hash Oil	1	1
Dealing In Methamphetamine	.	13	13	.	.	.	46	28	37	26	.	163
Dealing In Schedule I, II, or III Controlled Substance	.	6	18	.	.	.	1	5	4	4	.	38
Dealing In Schedule IV Controlled Substance	.	.	2	1	3
Dealing Possessing Look-Alike Substance	1	3	.	4
Domestic Battery	4	1	5
Escape	10	13	23
Fail To Return To Accident Resulting in Serious Injury	1	.	.	.	1
Failure To Appear	1	1
Failure To Register As A Sex Offender	4	.	4
Failure To Return Lawful Detention/Escape	.	.	.	1	1
Firearm Within 1 Mile School Property Without License	.	.	.	1	1
Forgery,Counterfeiting,Application Fraud	.	.	.	8	5	13
Fraud	3	3

INDIANA DEPARTMENT OF CORRECTION
ADULT OFFENDERS
by Most Serious Offense

Rockville Correctional Facility												
Most Serious Offense	Murder	FA	FB	FC	FD	F1	F2	F3	F4	F5	F6	Total
Fraud On A Financial Institution	9	.	9
Habitual Offender	1	1
Handgun Violation	8	.	8
Human Sexual Trafficking	.	.	2	1	.	.	.	3
Identity Deception	2	2
Incest	.	.	1	1	1	.	3
Inmate Fraud	1	.	1
Insurance Fraud	1	.	1
Intimidation	2	.	2
Kidnapping	1	.	.	.	1
Maintaining Common Nuisance	2	4	6
Murder	52	52
Neglect Of A Dependent	.	.	4	2	6	.	12
Neglect Of A Dependent Resulting in Serious Injury	20	.	.	.	20
Neglect Of Dependent Resulting In Death	.	10	.	.	.	8	18
Operate Vehicle After Suspended For Life	.	.	.	1	3	.	4
Operating Vehicle Intoxicated Resulting in Death	.	.	1	2	.	.	3
Operating Vehicle Intoxicated Resulting in Serious Bodily Injury	1	.	1
Operating Vehicle Intoxicated-Prior Conviction	2	2
Operating Vehicle-Habit Traffic Violator	1	1
Opererating Vehicle While Intoxicated - Prior Conviction	4	4
Pharmacy Robbery	1	.	.	1
Possession Of A Controlled Substance	.	.	.	1	1
Possession Of Cocaine Or Narcotic Drug	.	.	1	3	1	9	10	24
Possession Of Methamphetamine	.	.	3	1	1	.	.	12	15	24	31	87
Possession Of Syringes Or Needles	3	12	15
Promoting Prostitution	.	.	.	1	1
Promoting Prostitution Under Age 18	.	.	1	1
Rape	2	.	.	.	2
Reckless Homicide	2	.	2
Residential Entry	4	4
Resisting Law Enforcement	1	.	.	.	1
Robbery	.	3	7	1	.	.	7	34	.	9	.	61
Sexual Misconduct With A Minor	.	.	4	13	3	.	20
Stalking	1	.	1

INDIANA DEPARTMENT OF CORRECTION
ADULT OFFENDERS
by Most Serious Offense

Rockville Correctional Facility												
Most Serious Offense	Murder	FA	FB	FC	FD	F1	F2	F3	F4	F5	F6	Total
Theft,Receiving Stolen Property	1	4	19	24
Trafficking With An Inmate	12	.	12
Unlawful Firearm Poss By Serious Felon	.	.	2	5	.	.	7
Voluntary Manslaughter	.	8	1	.	.	.	11	20
Welfare Fraud	.	.	.	3	3
Total	52	104	115	28	8	23	106	164	148	258	120	1126

INDIANA DEPARTMENT OF CORRECTION
ADULT OFFENDERS
by Most Serious Offense

South Bend Community Re-Entry Center												
Most Serious Offense	Murder	FA	FB	FC	FD	F1	F2	F3	F4	F5	F6	Total
Aggravated Battery	.	.	2	2	.	.	.	4
Aiding Inducing/Causing An Offense	.	.	3	2	2	.	7
Attempt To Commit Felony	.	4	2	1	.	.	.	7
Auto Theft, Receiving Stolen Auto Parts	2	2
Battery	.	.	1	1	.	2	.	4
Battery To A Child Causing Death	.	1	1
Burglary	.	1	7	2	11	3	.	24
Conspiracy	.	4	1	1	.	6
Dealing In Cocaine Or Narcotic Drug	.	10	7	2	2	6	.	27
Dealing In Marijuana, Hash, or Hash Oil	1	.	1
Dealing In Methamphetamine	.	2	6	5	4	.	17
Dealing In Schedule I, II, or III Controlled Substance	.	1	1
Dealing Possessing Look-Alike Substance	2	.	2
Domestic Battery	1	.	1
Fail To Return To Accident Resulting in Serious Injury	1	.	.	.	1
Forgery,Counterfeiting,Application Fraud	.	.	.	1	1
Handgun Violation	3	.	3
Intimidation	1	.	1
Maintaining Common Nuisance	1	1
Murder	13	13
Non Support Of Dependent Child	.	.	.	3	1	4
Operate Vehicle After Suspended For Life	6	.	6
Operating Vehicle Intoxicated Resulting in Serious Bodily Injury	1	1
Opererating Vehicle While Intoxicated - Prior Conviction	1	1
Possession Of A Controlled Substance	1	1
Possession Of Cocaine Or Narcotic Drug	.	2	2	.	.	4
Possession Of Methamphetamine	1	1
Reckless Homicide	1	.	1
Resisting Law Enforcement	1	1
Robbery	.	1	5	1	.	.	.	3	.	4	.	14
Sale Of Unregistered Security	.	.	.	1	1
Synthetic Identity Deception	2	2
Theft,Receiving Stolen Property	4	4
Unlawful Firearm Poss By Serious Felon	.	.	3	2	.	.	5
Voluntary Manslaughter	.	4	1	5
Total	13	30	38	8	2	0	0	10	24	37	13	175

INDIANA DEPARTMENT OF CORRECTION
ADULT OFFENDERS
by Most Serious Offense

Wabash Valley Correctional Facility													
Most Serious Offense	Murder	FA	FB	FC	FD	F1	F2	F3	F4	F5	F6	HO*	Total
Accident Fail To Stop Resulting in Serious Injury or Death	1	.	.	1
Aggravated Battery	.	.	15	.	.	3	.	17	35
Aiding Inducing/Causing An Offense	.	11	1	.	.	2	.	2	1	1	.	.	18
Arson	.	1	7	3	.	.	.	11
Attempt To Commit Felony	.	84	7	.	.	15	2	4	2	4	.	.	118
Auto Theft, Receiving Stolen Auto Parts	1	2	.	3
Battery	.	5	2	2	.	.	2	.	.	28	2	.	41
Battery By Bodily Waste	1	1
Burglary	.	40	58	8	.	7	10	4	50	21	.	.	198
Carjacking	.	.	1	1
Child Exploitation	1	.	.	.	1
Child Molesting	.	240	15	.	.	60	.	1	1	.	.	.	317
Child Solicitation	.	.	.	1	1	.	.	2
Conspiracy	.	7	3	1	.	2	4	3	2	.	.	.	22
Criminal Confinement	.	.	10	3	.	1	.	.	14
Criminal Deviate Conduct	.	20	7	27
Criminal Recklessness	2	.	.	2
Dealing In Cocaine Or Narcotic Drug	.	49	26	.	.	.	8	5	11	8	.	.	107
Dealing In Marijuana, Hash, or Hash Oil	2	1	.	3
Dealing In Methamphetamine	.	13	18	.	.	.	20	9	22	19	.	.	101
Dealing In Schedule I, II, or III Controlled Substance	.	5	9	.	.	.	2	1	1	1	.	.	19
Dealing Possessing Look-Alike Substance	1	.	.	1
Domestic Battery	3	1	.	4
Driving Whl/Suspended Resulting In Death	1	.	.	1
Escape	1	1	.	.	2
Failure To Register As A Sex Offender	2	.	.	2
Failure To Return Lawful Detention/Escape	.	.	1	1	2
Firearm Within 1 Mile School Property Without License	.	.	.	2	2
Forgery,Counterfeiting,Application Fraud	.	.	.	2	2
Fraud On A Financial Institution	3	.	.	3
Habitual Substance Offender	1	1
Handgun Violation	12	.	.	12
Incest	1	.	.	.	1
Intimidation	5	1	.	6
Kidnapping	.	20	1	21
Maintaining Common Nuisance	1	.	1

INDIANA DEPARTMENT OF CORRECTION
ADULT OFFENDERS
by Most Serious Offense

Wabash Valley Correctional Facility													
Most Serious Offense	Murder	FA	FB	FC	FD	F1	F2	F3	F4	F5	F6	HO*	Total
Manufacture Methamphetamine	1	.	.	.	1
Murder	574	574
Neglect Of A Dependent Resulting in Serious Injury	4	4
Neglect Of Dependent Resulting In Death	.	9	9
Obstruction Of Justice	1	.	.	1
Operate Vehicle After Suspended For Life	5	.	.	5
Operating Vehicle Intoxicated	1	.	.	1
Operating Vehicle Intoxicated Resulting in Death	.	.	4	4	2	.	.	10
Operating Vehicle Intoxicated Resulting in Serious Bodily Injury	1	.	1
Operating Vehicle with BAC Equal or Greater than .15	0
Opererating Vehicle While Intoxicated - Prior Conviction	4	.	4
Possess Destructive Device Or Explosive	1	1
Possession Of Cocaine Or Narcotic Drug	.	3	1	1	1	5	4	.	15
Possession Of Dangerous Device	1	2	.	.	3
Possession Of Methamphetamine	.	.	1	2	4	9	5	.	21
Prisoner Poss. Dangerous Device/Material	.	.	1	1
Rape	.	47	9	.	.	12	.	6	74
Reckless Homicide	.	.	.	1	1	.	.	2
Removing, Damaging, Or Altering a VIN	.	.	.	1	1
Resisting Law Enforcement	.	.	1	2	.	3
Robbery	.	45	65	2	.	.	5	40	.	13	.	.	170
Sexual Misconduct With A Minor	.	.	9	1	.	.	.	10
Theft,Receiving Stolen Property	1	1	6	.	8
Trafficking With An Inmate	1	.	.	1
Unlawful Firearm Poss By Serious Felon	.	.	16	17	.	.	.	
Voluntary Manslaughter	.	37	2	.	.	.	10	
Welfare Fraud	1	1
Total	574	636	289	21	3	101	65	102	125	159	30	1	2106

INDIANA DEPARTMENT OF CORRECTION
ADULT OFFENDERS
by Most Serious Offense

Westville Correctional Facility													
Most Serious Offense	Murder	FA	FB	FC	FD	F1	F2	F3	F4	F5	F6	HO*	Total
Accident Fail To Stop Resulting in Serious Injury or Death	3	.	.	3
Aggravated Battery	.	.	13	37	50
Aiding Inducing/Causing An Offense	.	2	8	1	.	.	.	10	4	14	2	.	41
Arson	.	2	9	11	.	.	.	22
Assisting A Criminal	.	.	.	3	2	.	.	5
Attempt To Commit Felony	.	39	10	3	.	1	4	13	2	14	2	.	88
Auto Theft, Receiving Stolen Auto Parts	.	.	.	4	2	6	2	.	14
Battery	.	2	7	9	.	.	.	10	.	97	11	.	136
Battery To A Child Causing Death	.	1	1
Bribery	1	.	.	1
Burglary	.	13	120	24	.	.	9	4	167	108	.	.	445
Carjacking	.	.	2	2
Carrying Handgun Without License	.	.	.	3	3
Check Fraud	1	.	1
Child Molesting	.	7	6	1	.	.	.	1	2	.	.	.	17
Child Possession of Firearm	1	.	.	1
Conspiracy	.	5	2	1	.	.	.	5	4	5	.	.	22
Corrupt Business Influence	.	.	.	3	13	.	.	16
Criminal Confinement	.	.	10	2	.	.	.	9	.	22	1	.	44
Criminal Deviate Conduct	.	2	2	4
Criminal Recklessness	.	.	.	1	9	1	.	11
Deal Sub Represented To Be Controlled Sub	1	.	1
Dealing In Cocaine Or Narcotic Drug	.	96	91	.	.	.	17	42	45	40	.	.	331
Dealing In Marijuana, Hash, or Hash Oil	4	.	.	4
Dealing In Methamphetamine	.	21	72	.	.	.	25	36	73	56	.	.	283
Dealing In Schedule I, II, or III Controlled Substance	.	8	23	.	.	.	2	2	2	1	.	.	38
Dealing In Schedule IV Controlled Substance	.	.	1	1	.	.	.	3	1	1	.	.	7
Dealing Possessing Look-Alike Substance	.	.	.	1	5	6	.	12
Disarming A Law Enforcement Officer	6	.	.	6
Domestic Battery	50	13	.	63
Domestic Battery with Serious Bodily Injury Under Age 14	1	1
Escape	21	17	.	38
Fail To Return To Accident Resulting in Serious Injury	4	4
Fail To Stop After Accident - Operating Vehicle Intoxicated	.	.	1	1
Failure Of Sex Offender To Possess Id	1	1

INDIANA DEPARTMENT OF CORRECTION
ADULT OFFENDERS
by Most Serious Offense

Westville Correctional Facility													
Most Serious Offense	Murder	FA	FB	FC	FD	F1	F2	F3	F4	F5	F6	HO*	Total
Failure To Register As A Sex Offender	.	.	.	2	48	.	.	50
Failure To Return Lawful Detention/Escape	.	.	2	2
Firearm Within 1 Mile School Property Without License	.	.	.	3	3
Forgery,Counterfeiting,Application Fraud	.	.	.	15	4	.	19
Fraud	3	.	3
Fraud On A Financial Institution	.	.	.	4	13	.	.	17
Habitual Substance Offender	2	0
Handgun Violation	55	.	.	55
Home Improvement Fraud Offenses	1	1	.	.	2
Intimidation	.	.	.	1	27	6	.	34
Invasion Of Privacy	4	.	4
Involuntary Manslaughter	1	.	.	1
Kidnapping	.	2	2	.	1	.	.	5
Maintaining Common Nuisance	1	.	1
Manufacture Methamphetamine	1	4	.	.	.	5
Murder	85	85
Neglect Of A Dependent	.	.	3	1	4	.	.	8
Neglect Of A Dependent Resulting in Serious Injury	5	5
Neglect Of Dependent Resulting In Death	.	3	3
Non Support Of Dependent Child	.	.	.	12	1	2	3	.	18
Obliterating Handgun I.D.	3	.	.	3
Obstruction Of Justice	1	2	.	.	3
Operate Vehicle After Suspended For Life	.	.	.	7	68	.	.	75
Operating Vehicle Intoxicated Resulting in Death	.	.	3	14	2	.	.	19
Operating Vehicle Intoxicated Resulting in Serious Bodily Injury	2	1	.	3
Operating Vehicle Intoxicated-Prior Conviction	7	.	7
Operating Vehicle-Habit Traffic Violator	.	.	.	1	11	.	12
Opererating Vehicle While Intoxicated - Prior Conviction	13	.	13
Possess Chemical Reagents Or Precursors	.	.	.	1	1
Possession Of A Controlled Substance	4	1	.	5
Possession Of Cocaine Or Narcotic Drug	.	9	6	5	2	.	.	7	12	16	19	.	76
Possession Of Dangerous Device	1	.	.	.	1
Possession Of Methamphetamine	.	1	6	1	1	.	.	13	20	67	21	.	130
Possession Of Syringes Or Needles	8	.	8
Possession Or Use Of Legend Drug	1	.	1

INDIANA DEPARTMENT OF CORRECTION
ADULT OFFENDERS
by Most Serious Offense

Westville Correctional Facility													
Most Serious Offense	Murder	FA	FB	FC	FD	F1	F2	F3	F4	F5	F6	HO*	Total
Prisoner Poss. Dangerous Device/Material	.	.	4	4
Promoting Prostitution	2	.	.	2
Rape	.	4	4
Reckless Homicide	.	.	.	1	4	.	.	5
Residential Entry	5	.	5
Resisting Law Enforcement	1	.	.	1	.	3	16	.	21
Robbery	.	26	93	14	.	.	3	103	.	63	.	.	302
Sexual Battery	1	.	.	.	1
Sexual Misconduct With A Minor	.	.	3	1	2	1	.	.	7
Stalking	.	.	1	1	2	7	.	.	11
Strangulation	2	.	2
Theft,Receiving Stolen Property	.	.	.	1	6	1	27	.	35
Trafficking With An Inmate	.	.	.	1	3	.	.	4
Unlawful Firearm Poss By Serious Felon	.	.	16	66	.	.	.	82
Voluntary Manslaughter	.	34	6	.	.	.	1	41