

Surface Supply Air+ SPEC SHEET - *the only alternates able to be considered for this purchase must have identical placements*

ITEM #1: Interspiro Divator DP1 Surface Panel Kit psi

Quantity : 3

SKU: NIP-96710-53

Technical specification:

Approval : 89/686/EEC

Standard : EN 15333

Connection : 2 x G 5/8 (supply)

Connection (2) : 1 x G 5/8 (outlet)

Warning level : 55 bar / 800 psi

Dimensions : 420 x 400 x 200 mm / 16.5 x 15.7 x 7.9 inch

Dimensions with packaging : 420 x 400 x 200 mm / 16.5 x 15.7 x 7.9 inch

Product description

The DP1 is the world's first high pressure surface supply system. The unique design, with a light weight hose that also serves as a safety line, gives the diver excellent maneuverability while still providing the security of surface supply diving.

With the hose weighing in at just 10 % of a traditional low pressure hose, it's much easier for the diver to handle and less subject to currents. And since the regulator is incorporated with the diver's equipment, there's no need for the attendant to manually adjust the pressure – letting the whole team focus on the mission at hand.

The Divator DP1 supply panel has two high-pressure connections, each to be connected to a high pressure supply cylinder or cylinder pack. A shuttle valve makes it possible to change supply cylinders during the operation. The shuttle valve also includes a non-return valve for the supply hose.

No need for manual adjustment for various depths.

Simple user interface so the attendant can focus on the safety of the diver.

Light and compact design allows rapid deployment in remote or difficult terrain.

The DP1 supply panel is delivered with safety belt, pressure relief handle and "OPEN" sign. All Divator regulators can be used as a bailout apparatus to the DP1 system. The bail out regulator is intended to be used when a direct warning of the surface supply failure is needed, so that full cylinders are available for decompression and/or extended time ascent.



- Automatic shuttle valve
- Primary pressure gauge
- Automatic audible alarm – Alarm sounds when pressure is down to 55 bar / 800 psi
- Sealed transport box – For dry stowage and easy transportation
- Regulator with quick coupling

ITEM #2: Interspiro DP1 Supply Hose W COMM 200ft RS4-P+REGULATOR

Quantity : 6

SKU : NIP-96725-6010

The supply hose itself is very strong but lightweight. At only 10mm (0.39 inch) In diameter, 60 meters (200 feet) of hose weighs less than 5 kilograms (11 lbs) resulting in less storage space, lower carry weight and far less drag in swift water. With communication cable fully compatible with Ocean Technology Systems MK-7 Buddy-Line-portable two diver intercom surface communication and the Ocean Technology Systems Male Marsh Marine Connector.

Weight 4.90 kg / 10.8 lbs **Supply hose Diameter** 10.0 mm / 0.394 inch

- Back pressure valve for supply hose
- 2 x high pressure hoses for connection of air supplies
- Bleed valves
- Supply hose with anchoring device
- Supply hose approved for 9 000 N / 900 kg / 2000 lbs
- Belt and carabiner hook
- "OPEN" sign

Description:

Four Cat 5e 22 AWG symmetric quad stranded (19x34) tinned copper conductors, polyolefin insulation, FRPE bedding, Beldfoil® shield (100% coverage) plus tinned copper braid (85% coverage), industrial grade oil- and UV-resistant TPE jacket, PROFINET Type C, 5 million flex cycles.

ITEM #3: Interspiro Holdall DP1 Hose Bag with winding post, red

Quantity : 6

SKU: NIP-336950317

Holdall DP1 Hose Bag with winding post, red
DP1-BAG-D Holdall for DP1 hose with winding posts. Fits up to a 60-meter DP1 hose. Red in color w/black trim.

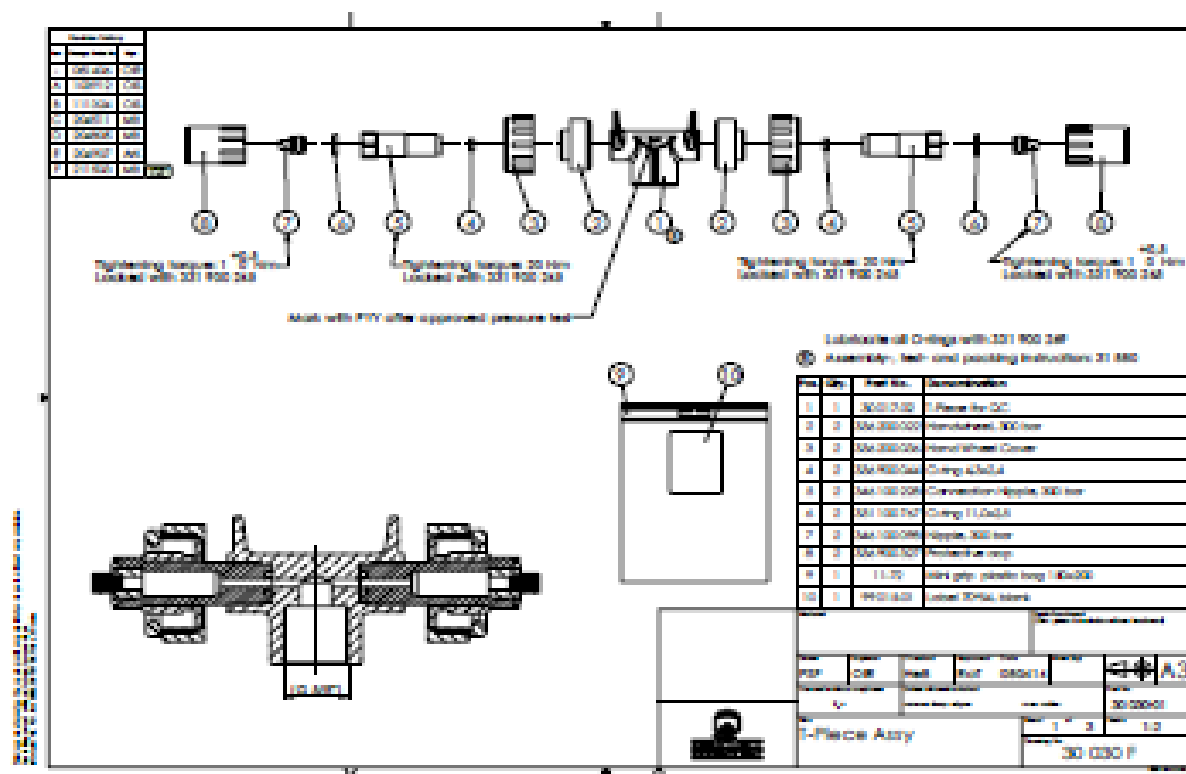


SKU: NIP-32970-22

RS4 Regulator -
4-port SCUBA + DP1
Delivered with DP1 surface supply connection
and basic pressure gauge (some models). 32970-22 Yoke
cylinder connection, No
pressure gauge.



SKU: NIP-30030-51



SKU : NIP-31622-01