

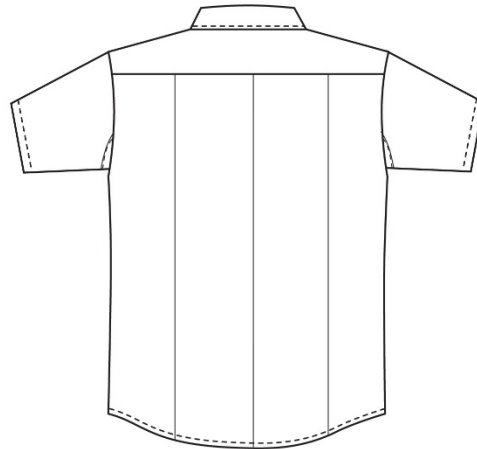
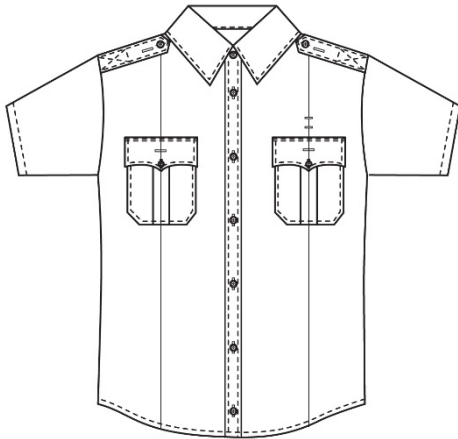
CAPITOL POLICE
WOMEN'S SHIRT SPECIFICATIONS
Flying Cross by Fechheimer Item: F1 PS1000W

FABRIC:

Content: 96% Polyester / 4% Spandex
Weight: 5.2 oz. / square yard

COLORS:

NAVY (86)
BLACK (10)



PATTERN:

Female

STYLE:

To be Flying Cross Model F1 PS1000W. Dress style, top center placket front, knit underarm gussets, convertible collar, short sleeves and dress shirrtail. Two front hidden document pockets with Velcro closure and two pleated breast pockets with topstitched scalloped flaps. Topstitched shoulder straps. Full badge reinforcement. Wire Pass-through openings. Matching inside yoke and banana band of high luster Poly/Twill. Work wear industrial style shirt construction is unacceptable and shall be cause for rejection.

COLLAR:

Convertible collar shall be one piece. Collar points to measure 3" long with ultrasonically fused-in Mylar stays. Collar stays are positioned along the leading edge of the collar. There shall also be a round embroidered eyelet 1" in from front edges to accommodate collar insignia. Collar to have woven fusible interlining. Stays to be 2 1/4" long, 3/8" minimum width. Collar is 1/4" topstitched.

FRONT:

Each front shall have a facing approximately 3" in width. The left front shall have a top center placket 1-1/2" wide with two rows of stitching 7/8" apart. Stitching on top center is not to be visible on the turn-back facing. The shirt will have 7 buttons and buttonholes on the front; spacing between each will be 3-3/4" except the spacing between the neck button and the first button on the front, which will be approximately 2 1/2". Top center placket to have woven fusible interlining. Non-woven interlining unacceptable and shall be cause for rejection. The fronts shall be joined to the yoke so that both raw edges of the yoke are turned under, with the front sandwiched between, and then all three are stitched down with a 1/16" raised stitch. Safety stitch joining unacceptable. A 15" nylon zipper, to be set below the second button and buttonhole, shall accomplish front closure. The top, second and bottom buttons to be attached to the right front, the balance to be sewn over the buttonholes on the left front.

SHOULDER STRAPS:

Shoulder straps to be two-piece pointed, 1/4" topstitched and to be set on yoke with leading topstitch conforming with front joining seam. To measure 2" at sleeve tapering to 1-3/8" and set not more than 1/2" from collar set seam. Cross-stitched approximately 2" from sleeve seam. Shoulder strap to have functional buttonhole to attach to sewn button on shoulder of shirt. Edge stitched shoulder strap construction unacceptable.

BADGE REINFORCEMENT:

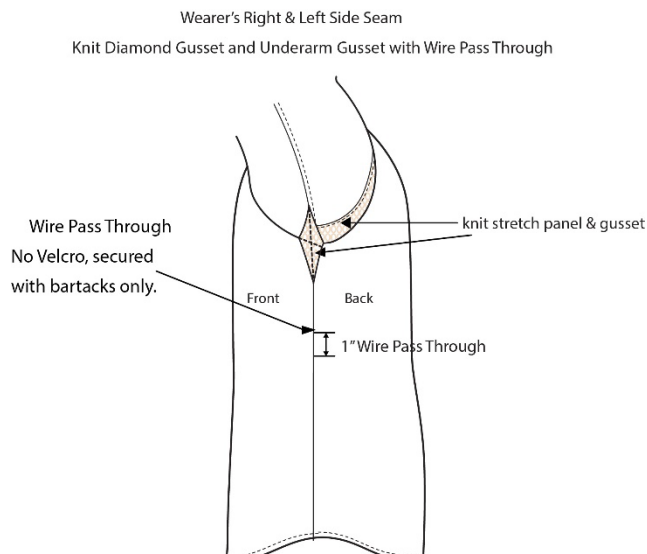
Two-ply sling 1" wide centered over left pocket and stitched to shoulder seam and flap setting stitch. It shall have 2 (two) buttonhole eyelets 1-1/4" from top of pocket flap spaced 1-1/4" apart and centered on sling.

WIRE PASS THROUGH OPENINGS:

Each front shall have an 11/16" horizontal buttonhole to be centered vertically and horizontally between the top of the pocket and the bottom of the open flap.

Each shoulder shall have an 11/16" horizontal buttonhole to be centered under the shoulder straps and sewn through the shoulder of the shirt.

WIRE



UNDERARM GUSSET WITH PASS THROUGH:

HIDDEN DOCUMENT POCKETS:

Each front shall be constructed with a document pocket design which is sewn to the inside of each front with Velcro opening on each pocket near the top center placket.

POCKETS:

Two breast patch pockets with mitered corners and 1-1/2" stitched pleats. Pleats shall be stitched top and bottom and full length of pleat to prevent spreading. Pocket to measure: sizes 15.0 and smaller to finish 5" wide, 6 1/2" deep; sizes 15.5 and larger to finish 6" wide, 6 1/2" deep. Each pocket to have hook Velcro, 3/4" long by 1/2" wide, positioned on both edges of pocket to correspond with outer scalloped flap points as specified.

FLAPS:

Two piece deep scalloped design to measure: sizes 15.0 and smaller to finish 5 1/4" wide, 2 3/4" deep at center, 2 1/4" deep at sides; sizes 15.5 and larger to finish 6 1/4" wide, 2 3/4" deep at center, 2 1/4" deep at sides. Secured to shirtfront approximately 3/8" above pocket. Each flap to have invisible pencil opening 1-1/2" wide. (Stop & start stitching for pencil opening unacceptable and shall be cause for rejection.) Flaps to be 1/4" topstitched. Flaps to have woven fusible interlining. Creased and edge stitched pocket flap construction unacceptable. Under side of the flap to have looped Velcro 3/4" long by 1/2" wide stitched all sides, positioned on outer points of both pocket flaps to secure with corresponding Velcro strips on shirt pocket. Each flap shall have a button centered on an uncut sewn buttonhole.

SLEEVES:

Sleeves are to be straight and whole and to have a 3/4" hem and to finish at a minimum of 9 1/2" long from shoulder seam. Capitol Police shoulder emblems shall be sewn onto each sleeve, with the top border of the emblem meeting the shoulder seam.

"See Attachment "Z" Figure 1 for emblems to be attached to each sleeve, which are supplied by the bidder."

BUTTONS:

First grade 20-ligne melamine.

SEWING:

Collar, shoulder straps, and pocket flaps to be 1/4" topstitched. Sleeve inserting and side close felling seams are to be safety stitched.

THREAD:

All sewing threads to be color fast polyester wrap to match.

INTERLININGS:

Collar, Pocket flaps, Shoulder straps and top center to be interlined with fusible interlining.

MILITARY CREASES:

There shall be five sharp silicone military creases on all shirts. One crease on each front to be centered vertically. Front creases shall be through pockets and flaps. Spacing for three military creases across shirt back to be proportionate to the size of the shirt.

CONSTRUCTION:

Collar, flaps and shoulder straps are made with conventional construction. Top ply, bottom ply and interlining are first stitched together, then turned right side out and finally topstitched.

STOCK SIZES:

Shirts must be available in the following sizes:

Bust Sizes 26-54