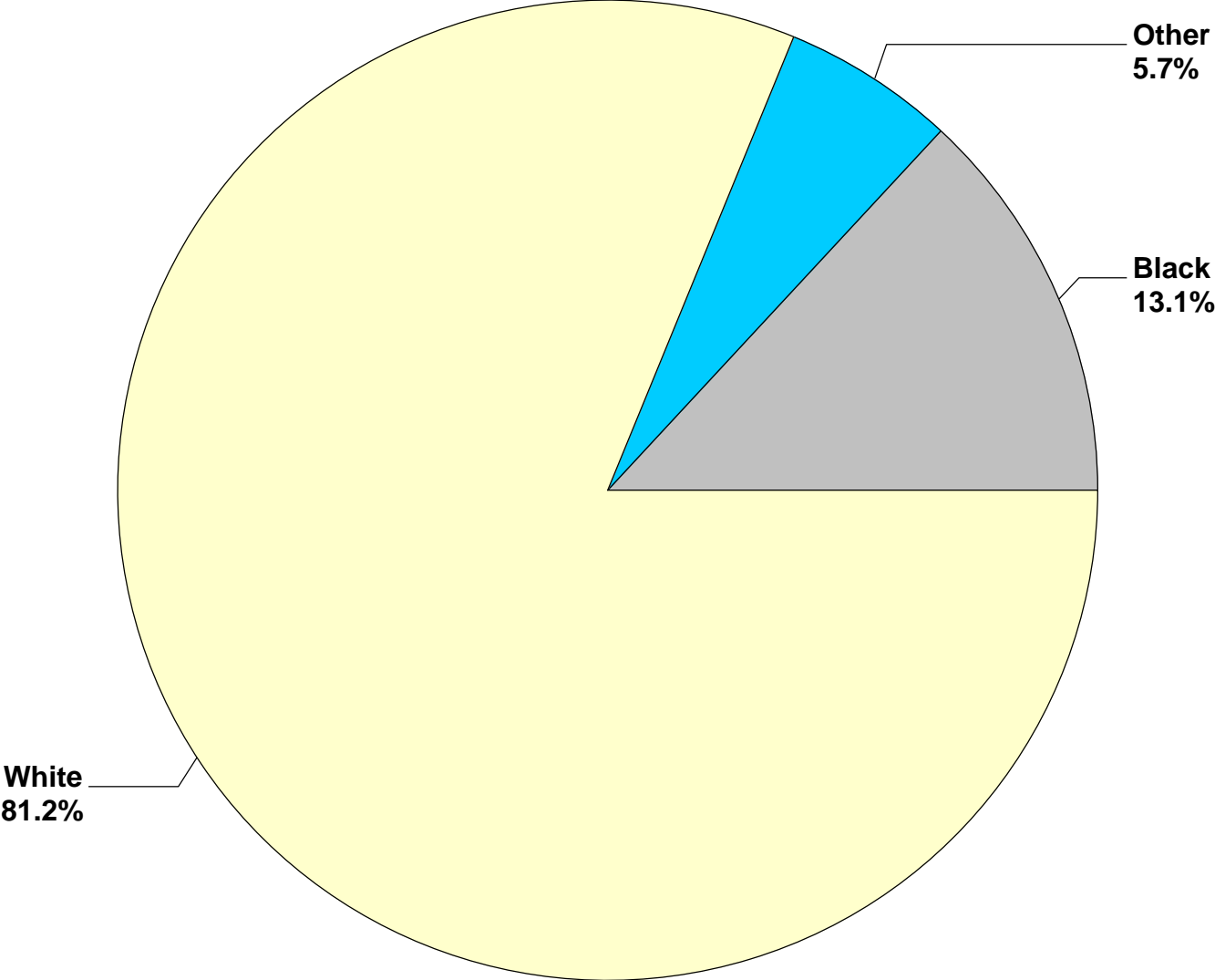


Figure 1

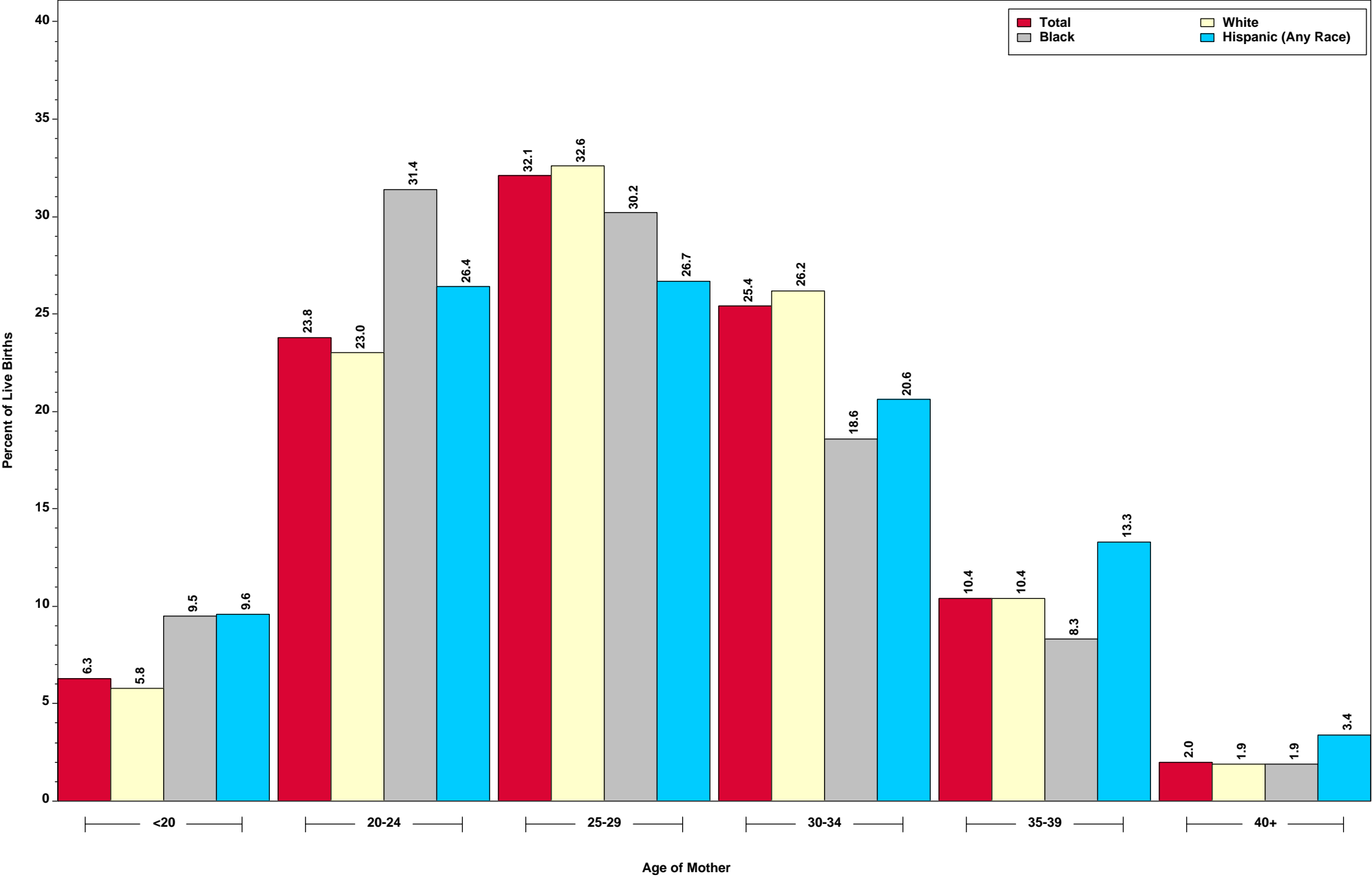
Percent of Live Births by Race of Mother: Indiana Residents, 2017



This figure was run on November 2, 2018.
Source: ISDH, ERC, DAT; Table 1.

Figure 2

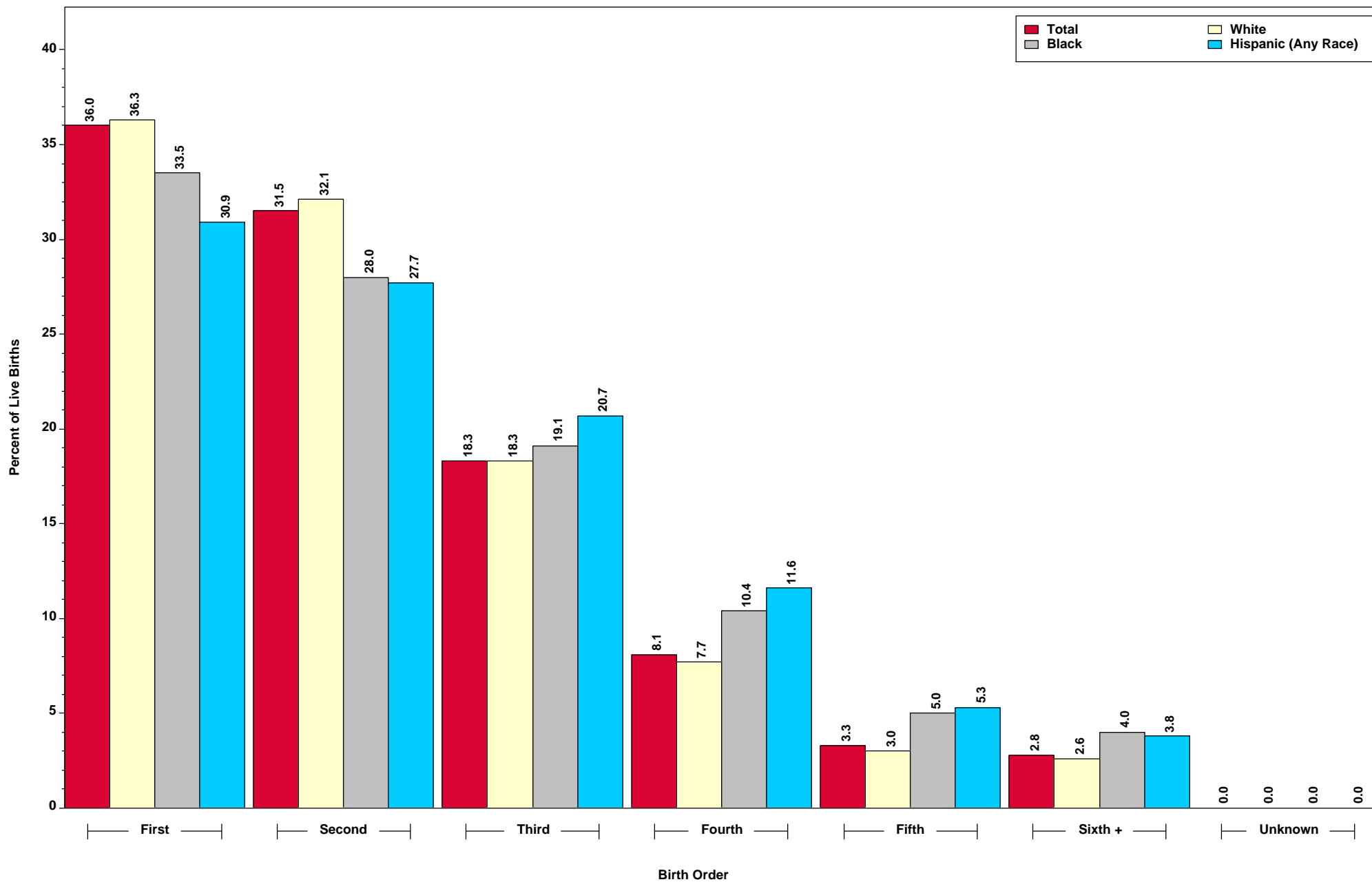
Percent of Live Births by Age and Race/Ethnicity of Mother: Indiana Residents, 2017



This figure was run on November 2, 2018.
Source: ISDH, ERC, DAT; Table 3

Figure 3

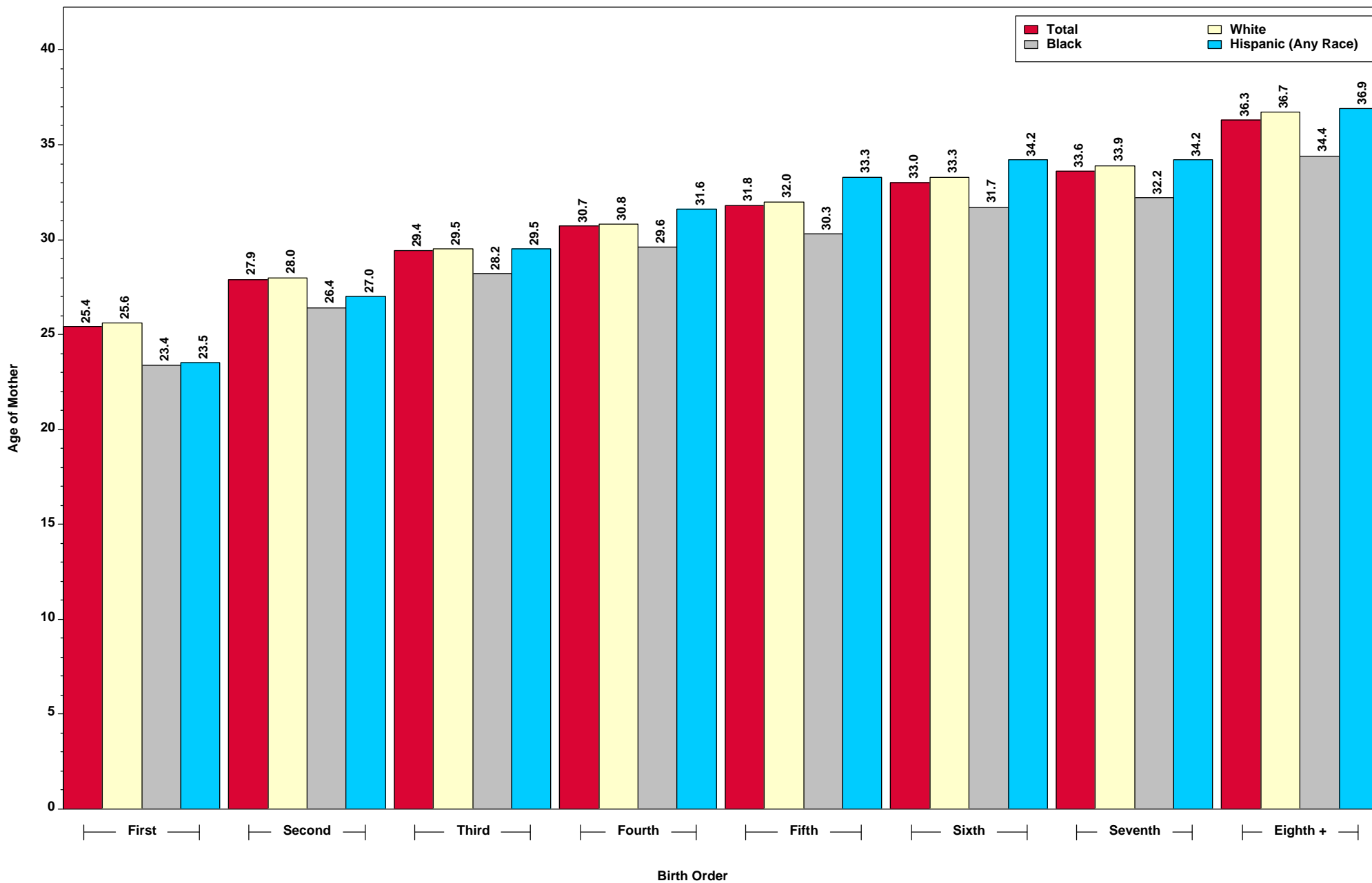
Percent of Live Births by Birth Order and Race/Ethnicity of Mother: Indiana Residents, 2017



This figure was run on November 2, 2018.
Source: ISDH, ERC, DAT; Table 7

Figure 4

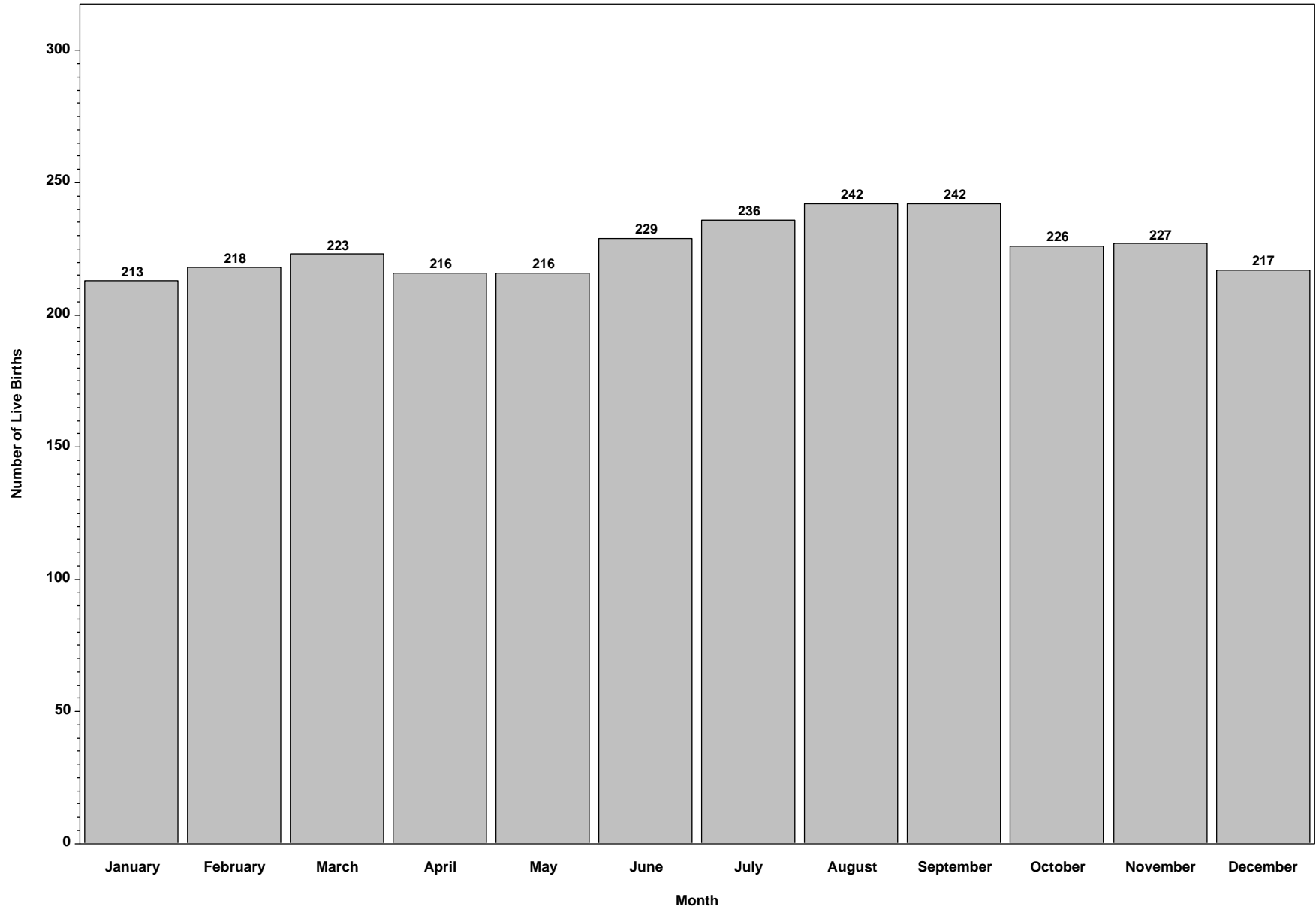
Average Age of Mother by Live Birth Order and Race/Ethnicity of Mother: Indiana Residents, 2017



This figure was run on November 2, 2018.
Source: ISDH, ERC, DAT

Figure 5

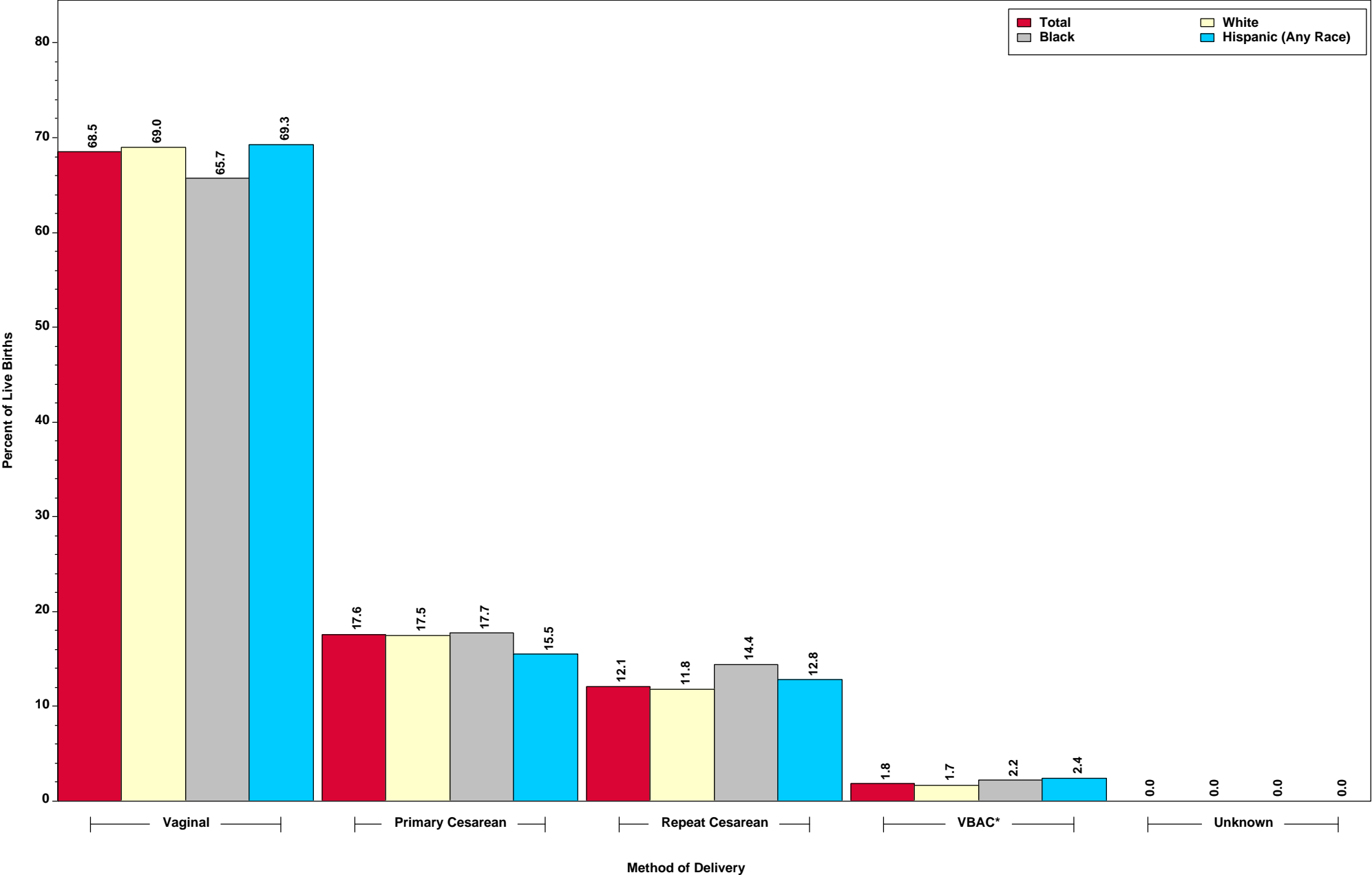
Average Number of Live Births per Day by Month: Indiana Residents, 2017



This figure was run on November 2, 2018.
Source: ISDH, ERC, DAT; Table 4

Figure 6

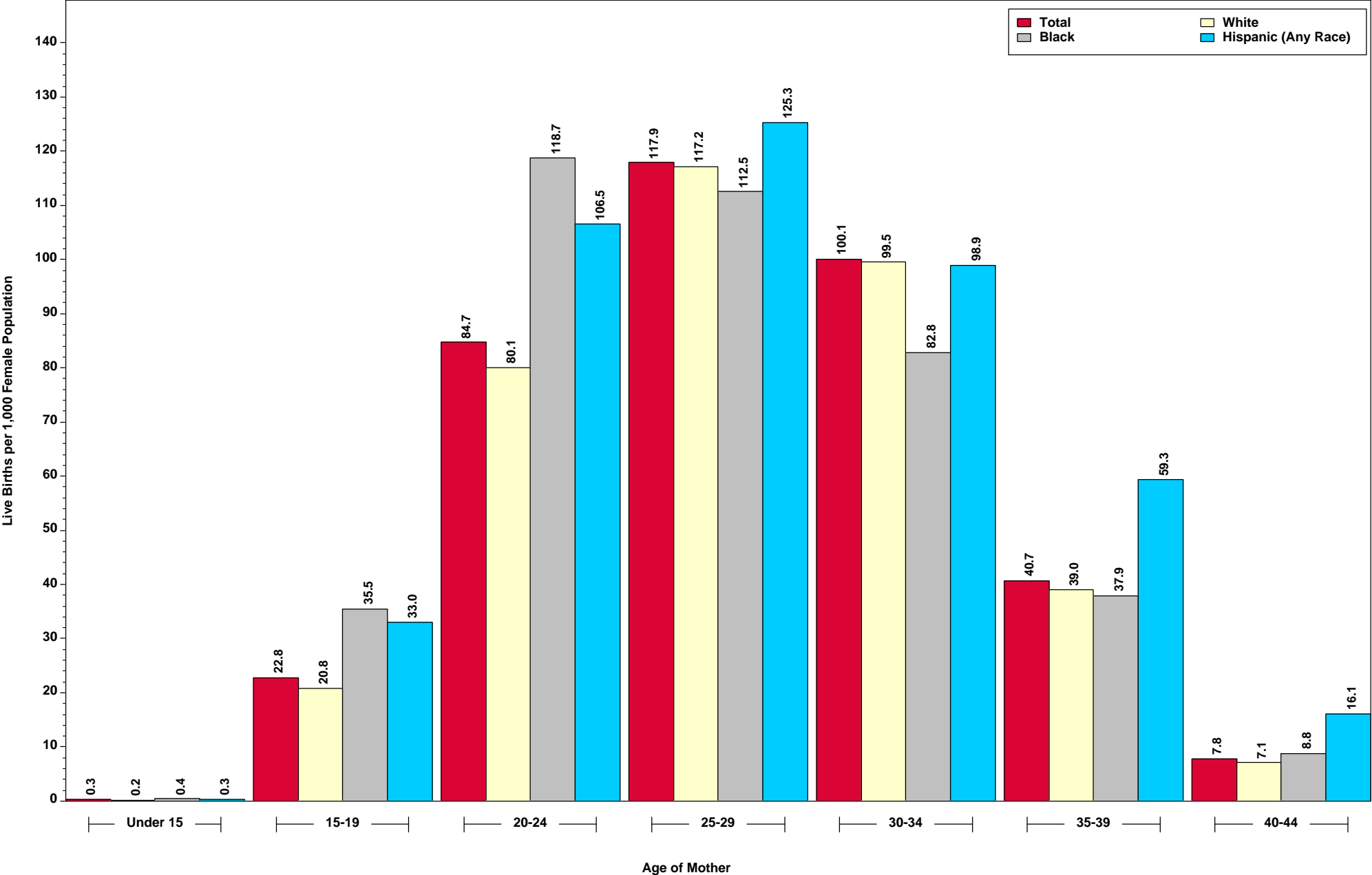
Percent of Live Births by Method of Delivery and Race/Ethnicity of Mother: Indiana Residents, 2017



This figure was run on November 2, 2018.
Source: ISDH, ERC, DAT; Table 27a

Figure 7

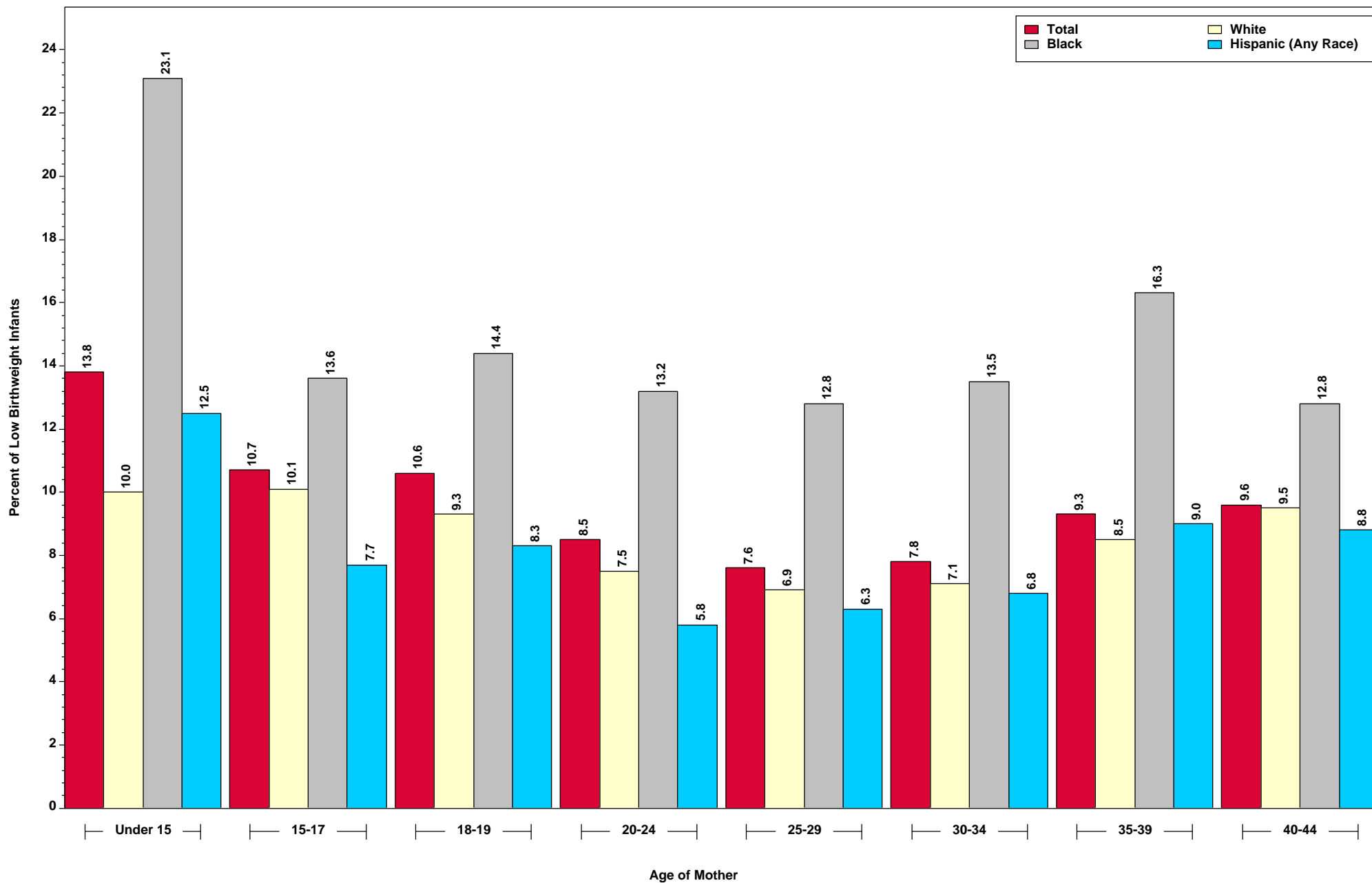
Age-Specific Birth Rates by Race/Ethnicity of Mother: Indiana Residents, 2017



This figure was run on November 2, 2018.
Source: ISDH, ERC, DAT; Table 13

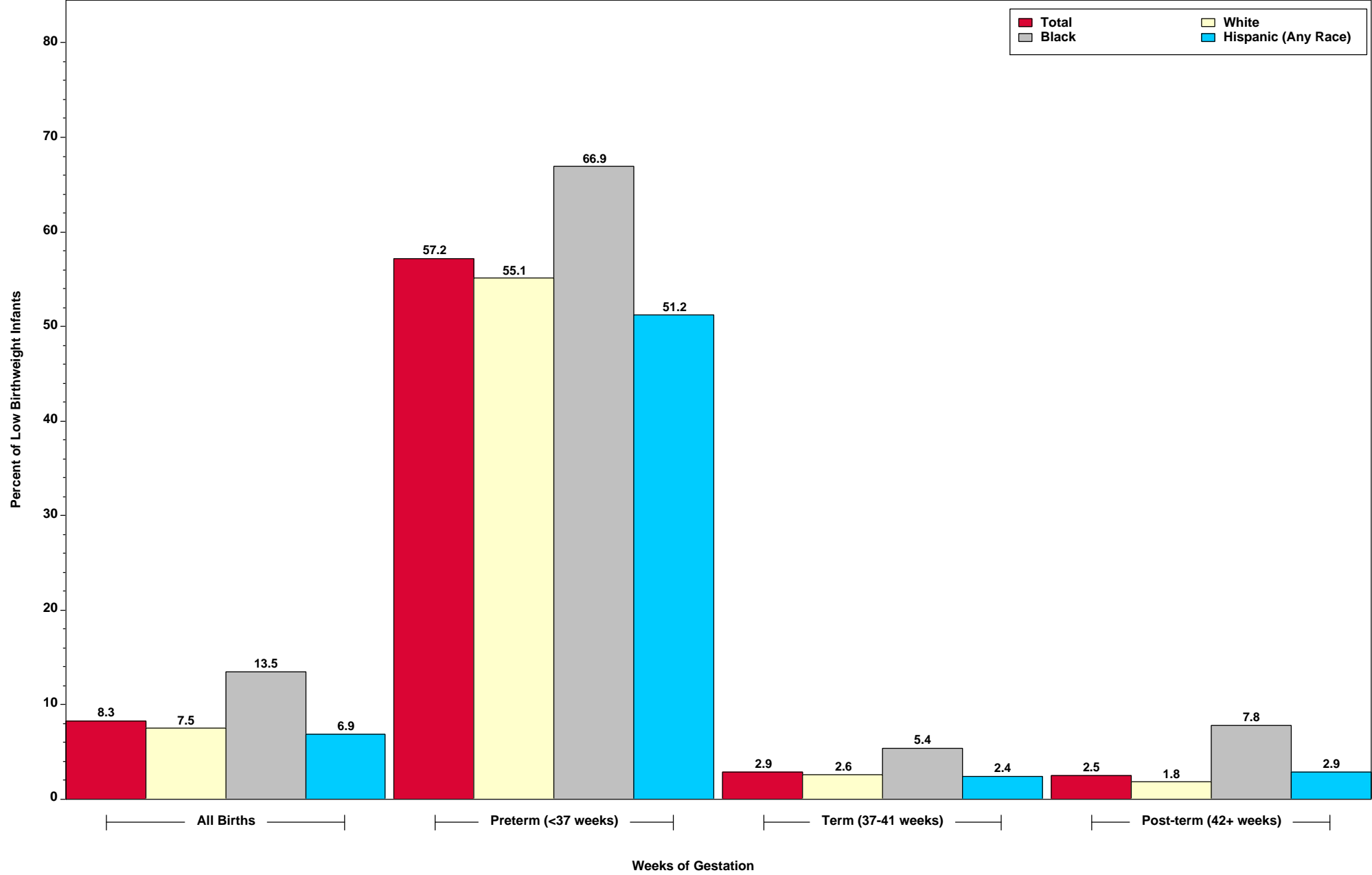
Figure 8

Percent of Live Births with Low Birthweight by Age and Race/Ethnicity of Mother: Indiana Residents, 2017



This figure was run on November 2, 2018.
Source: ISDH, ERC, DAT; Table 14

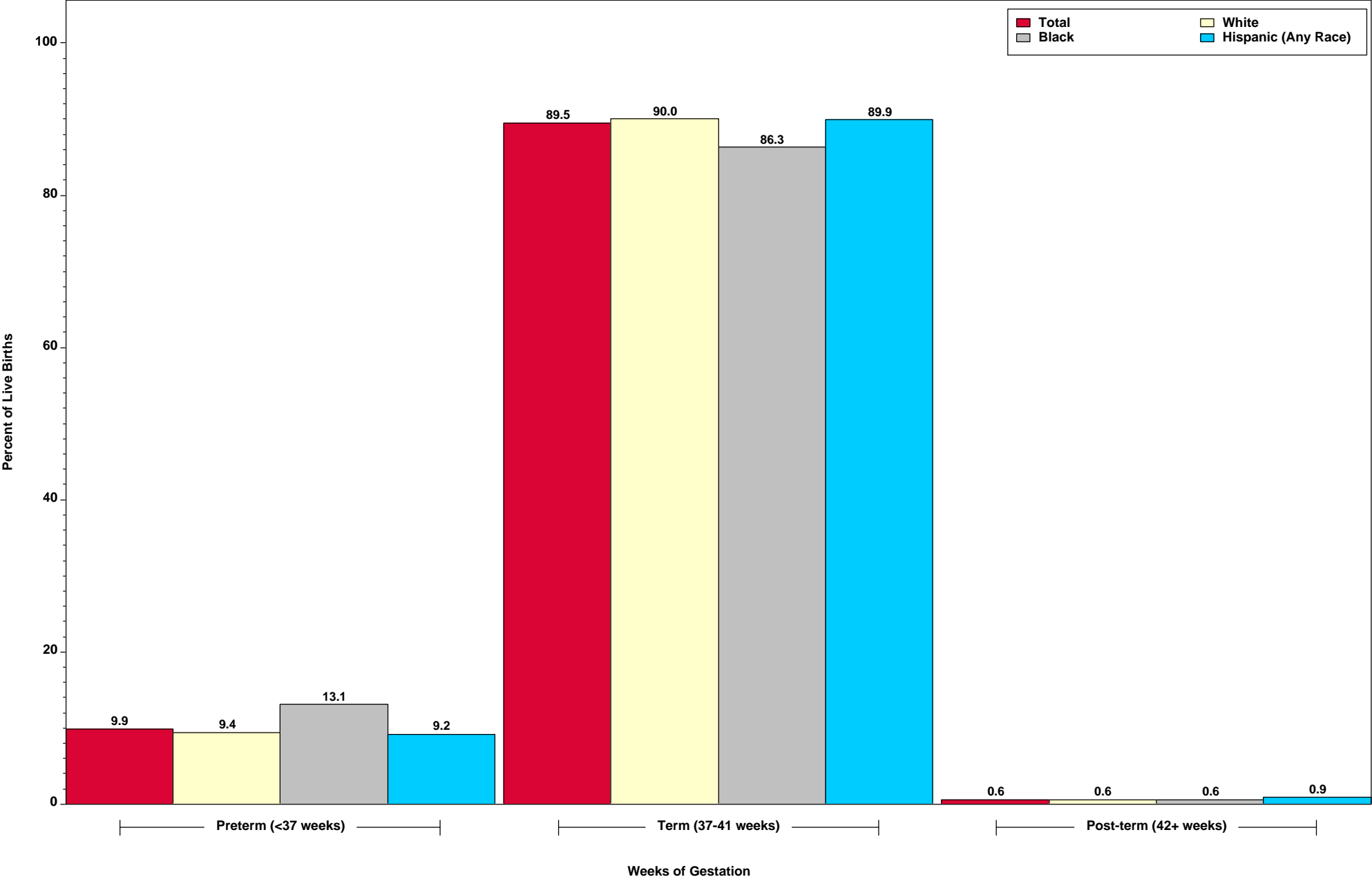
Figure 9
Percent of Live Births with Low Birthweight by Weeks of Gestation and Race/Ethnicity of Mother:
Indiana Residents, 2017



This figure was run on November 2, 2018.
 Source: ISDH, ERC, DAT

Figure 10

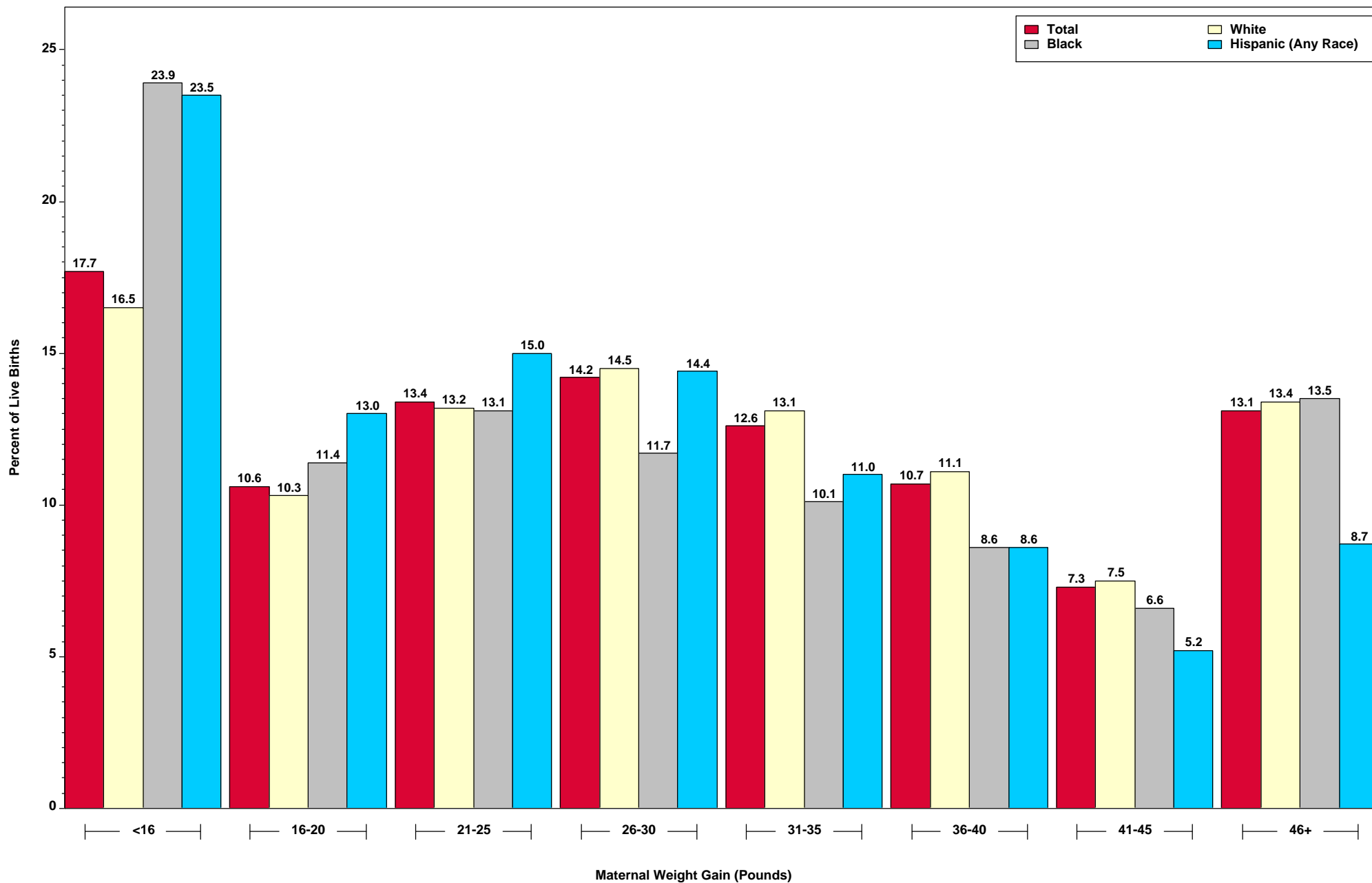
Percent of Live Births by Weeks of Gestation and Race/Ethnicity of Mother: Indiana Residents, 2017



This figure was run on November 2, 2018.
Source: ISDH, ERC, DAT; Table 18

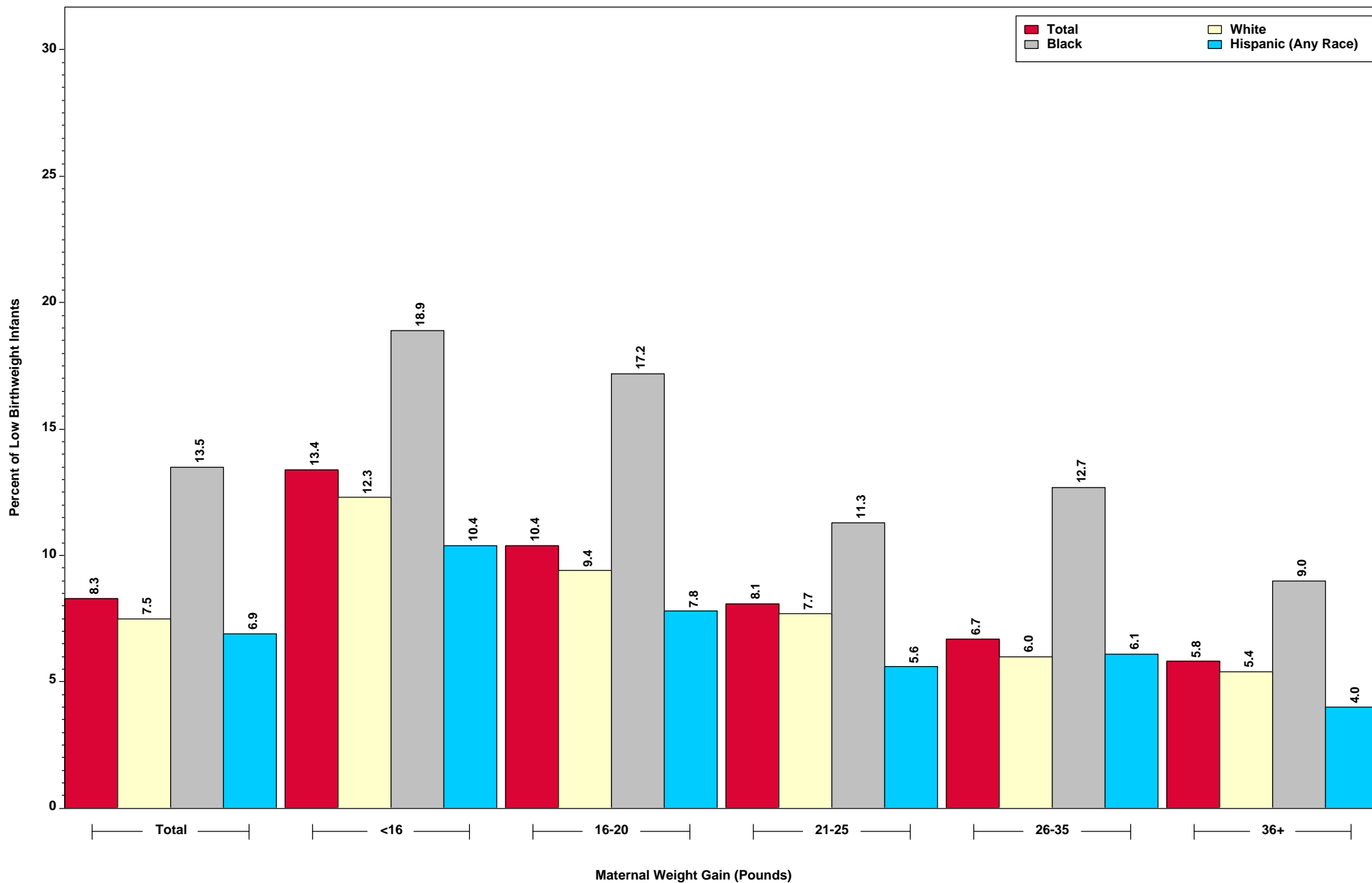
Figure 11

Percent of Live Births by Maternal Weight Gain and Race/Ethnicity of Mother: Indiana Residents, 2017



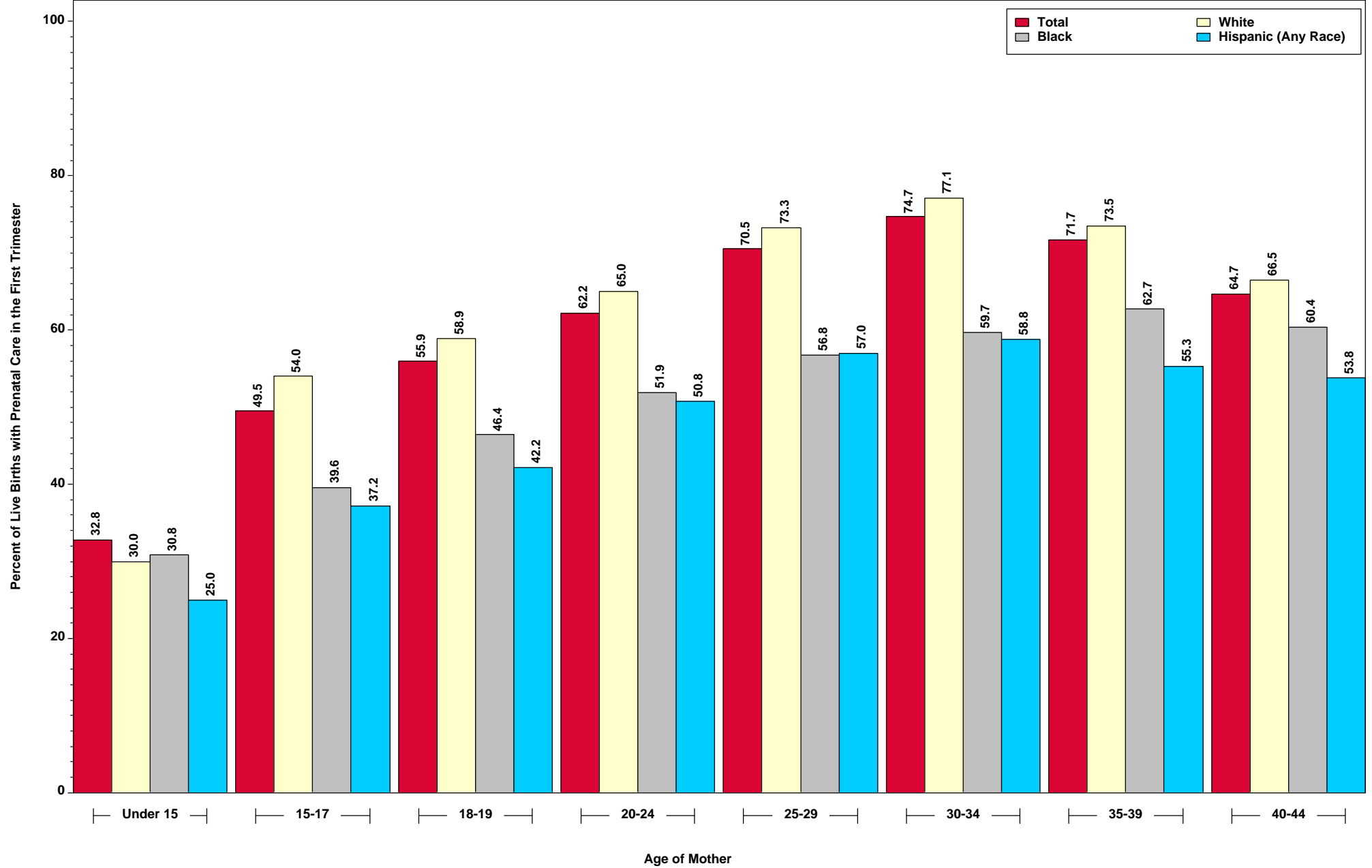
This figure was run on November 2, 2018.
Source: ISDH, ERC, DAT

Figure 12
Percent of Live Births with Low Birthweight by Maternal Weight Gain and Race/Ethnicity of Mother:
Indiana Residents, 2017



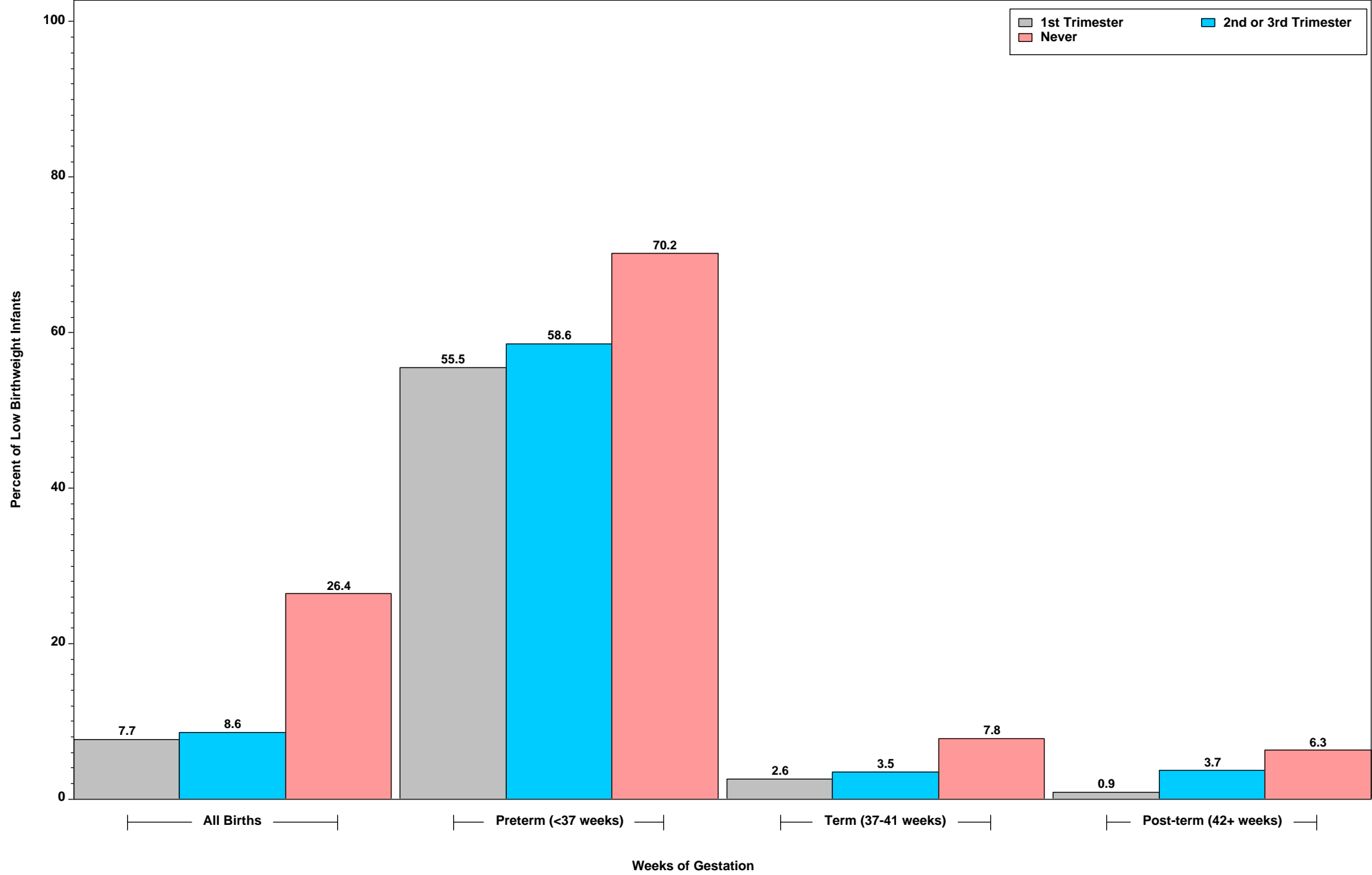
This figure was run on November 2, 2018.
 Source: ISDH, ERC, DAT

Figure 13
Percent of Live Births with Prenatal Care in the First Trimester by Age and Race/Ethnicity of Mother:
Indiana Residents, 2017



This figure was run on November 2, 2018.
 Source: ISDH, ERC, DAT; Table 24

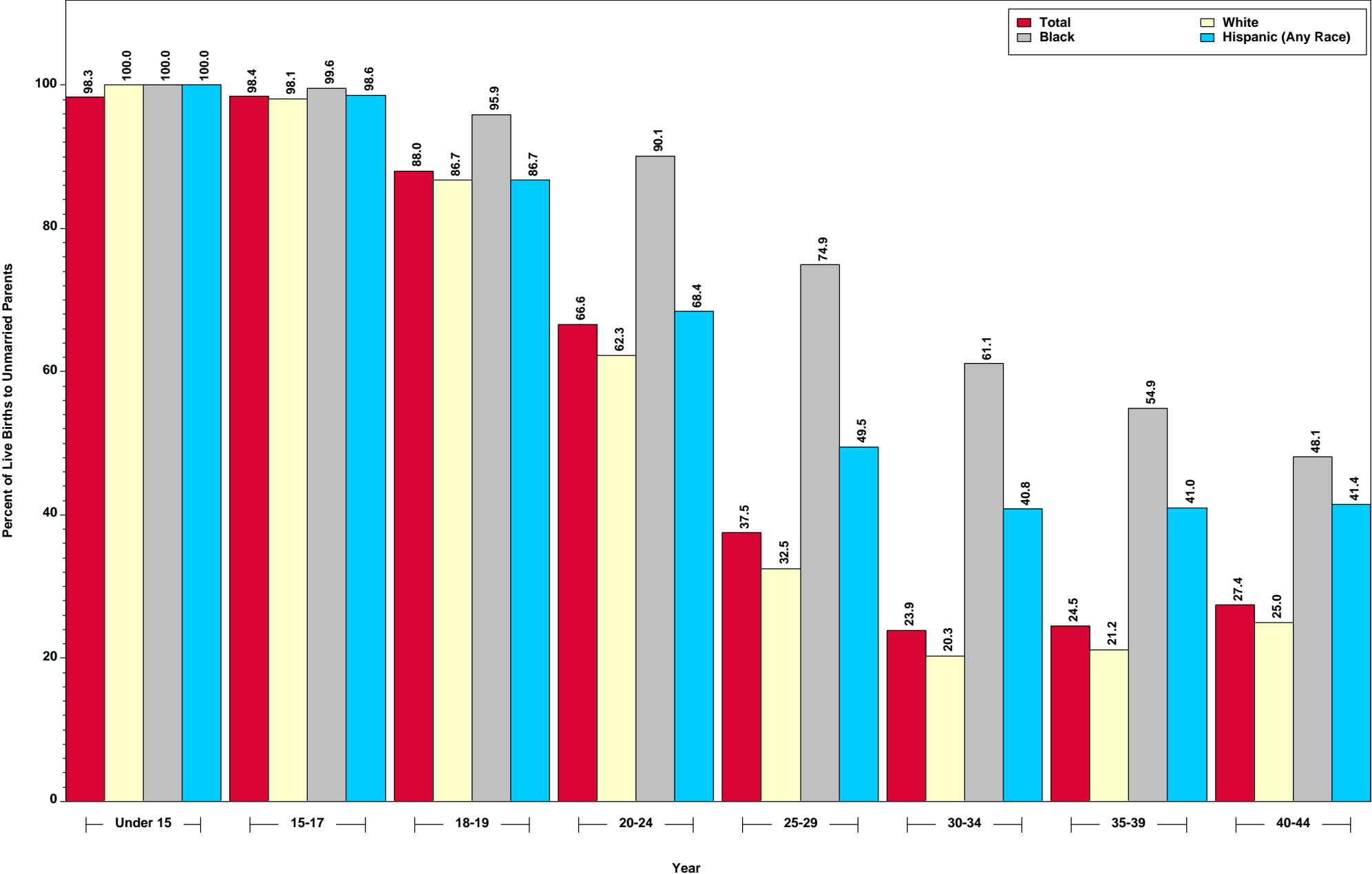
Figure 14
Percent of Live Births with Low Birthweight by Gestation and Trimester Prenatal Care Began:
Indiana Residents, 2017



This figure was run on November 2, 2018.
 Source: ISDH, ERC, DAT

Figure 15

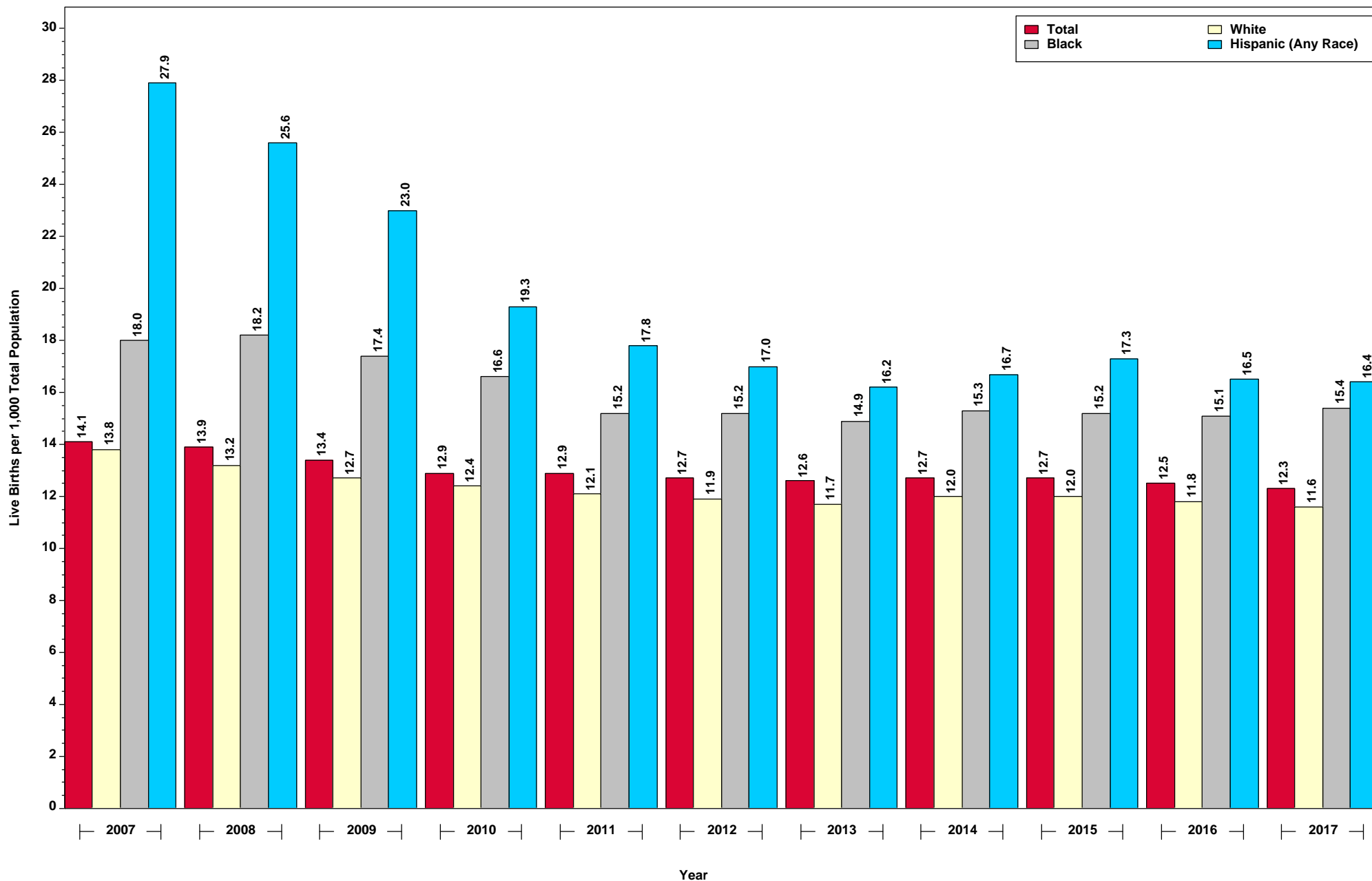
Percent of Live Births to Unmarried Parents by Age and Race/Ethnicity of Mother: Indiana Residents, 2017



This figure was run on November 2, 2018.
Source: ISDH, ERC, DAT; Table 25

Figure 16

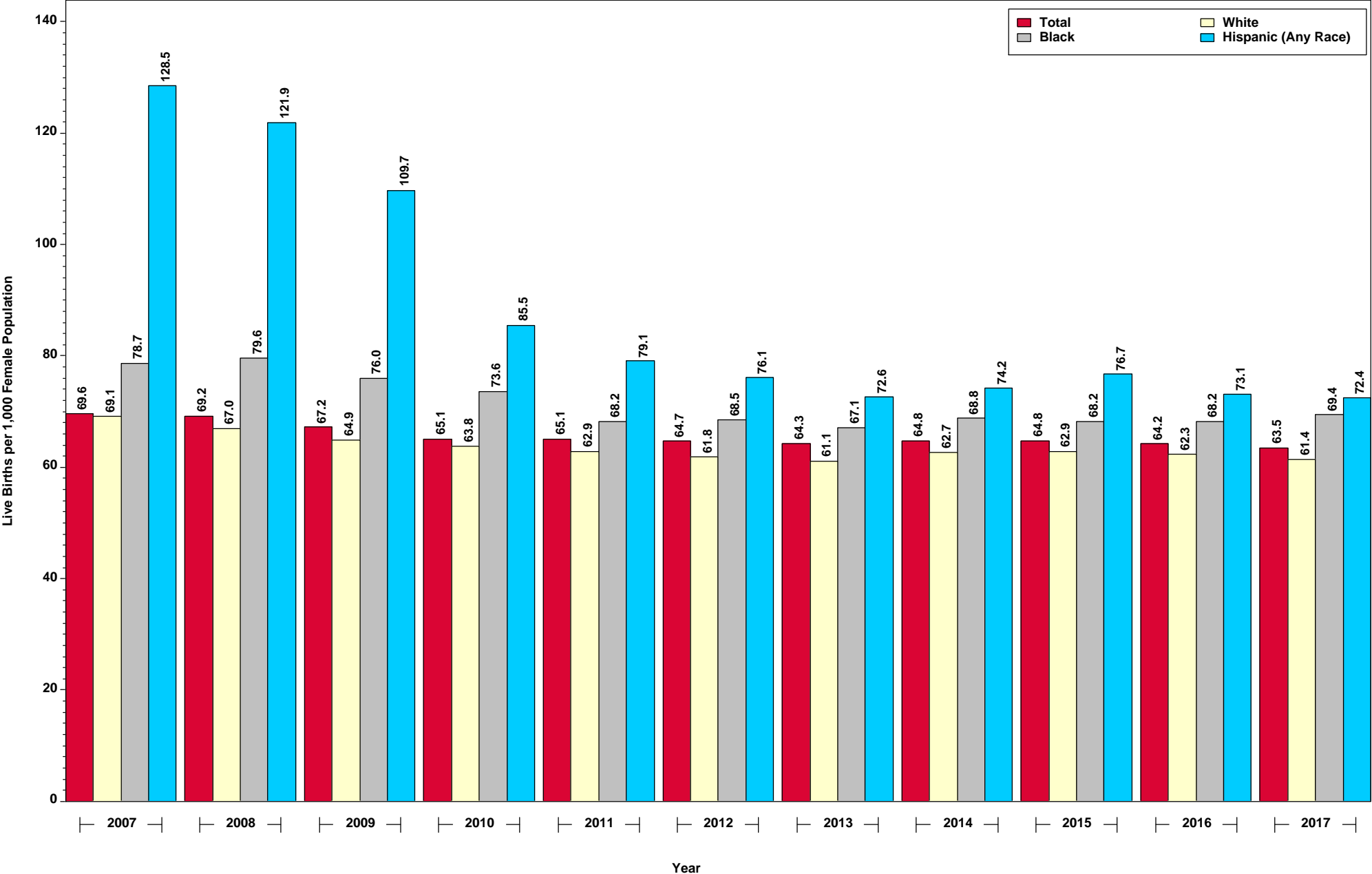
Crude Birth Rates by Year and Race/Ethnicity of Mother: Indiana Residents, 2007 to 2017



This figure was run on November 2, 2018.
Source: ISDH, ERC, DAT; Table 28 (2017)

Figure 17

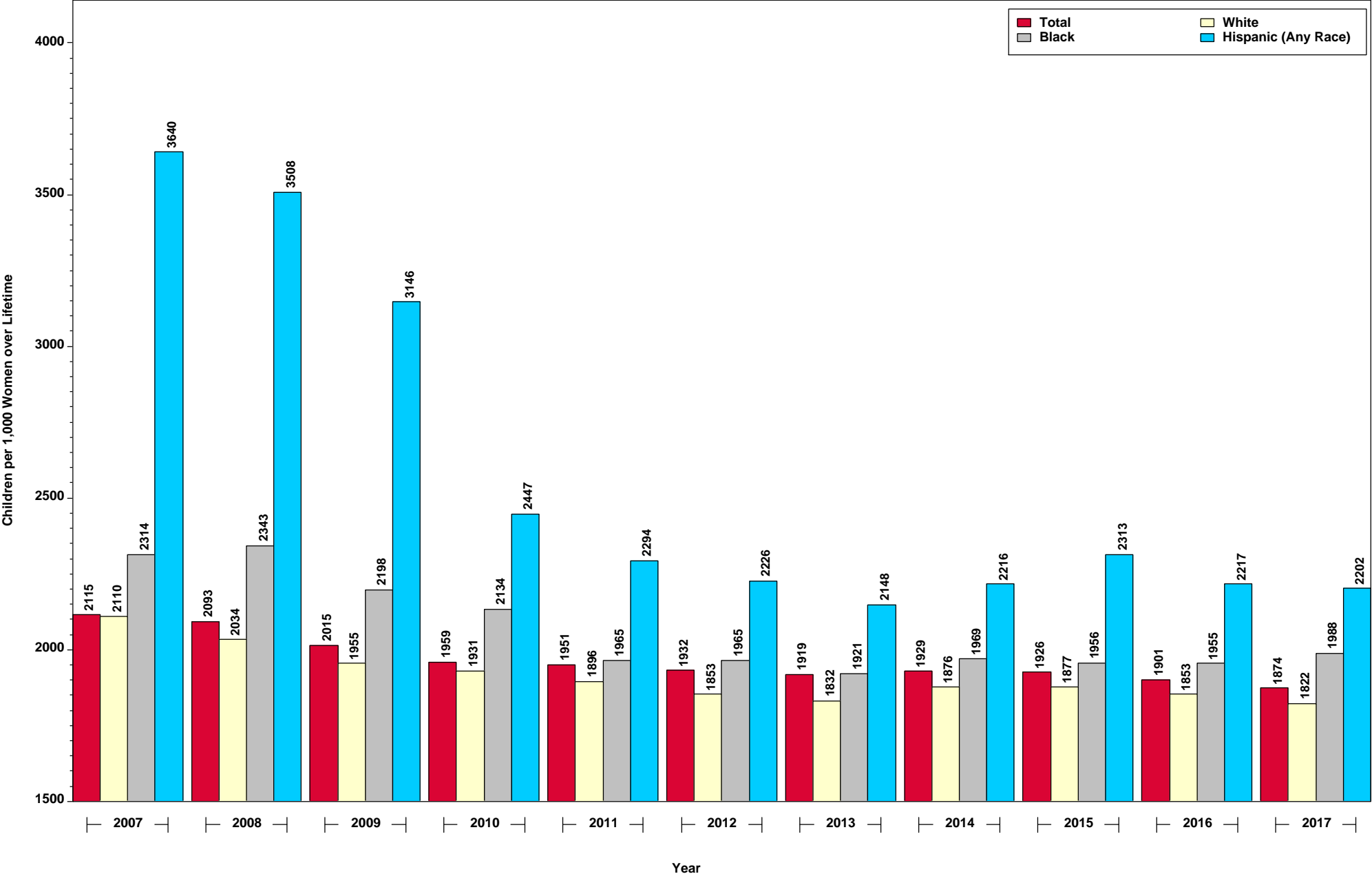
General Fertility Rates by Year and Race/Ethnicity of Mother: Indiana Residents, 2007 to 2017



This figure was run on November 2, 2018.
Source: ISDH, ERC, DAT; Table 13 (2017)

Figure 18

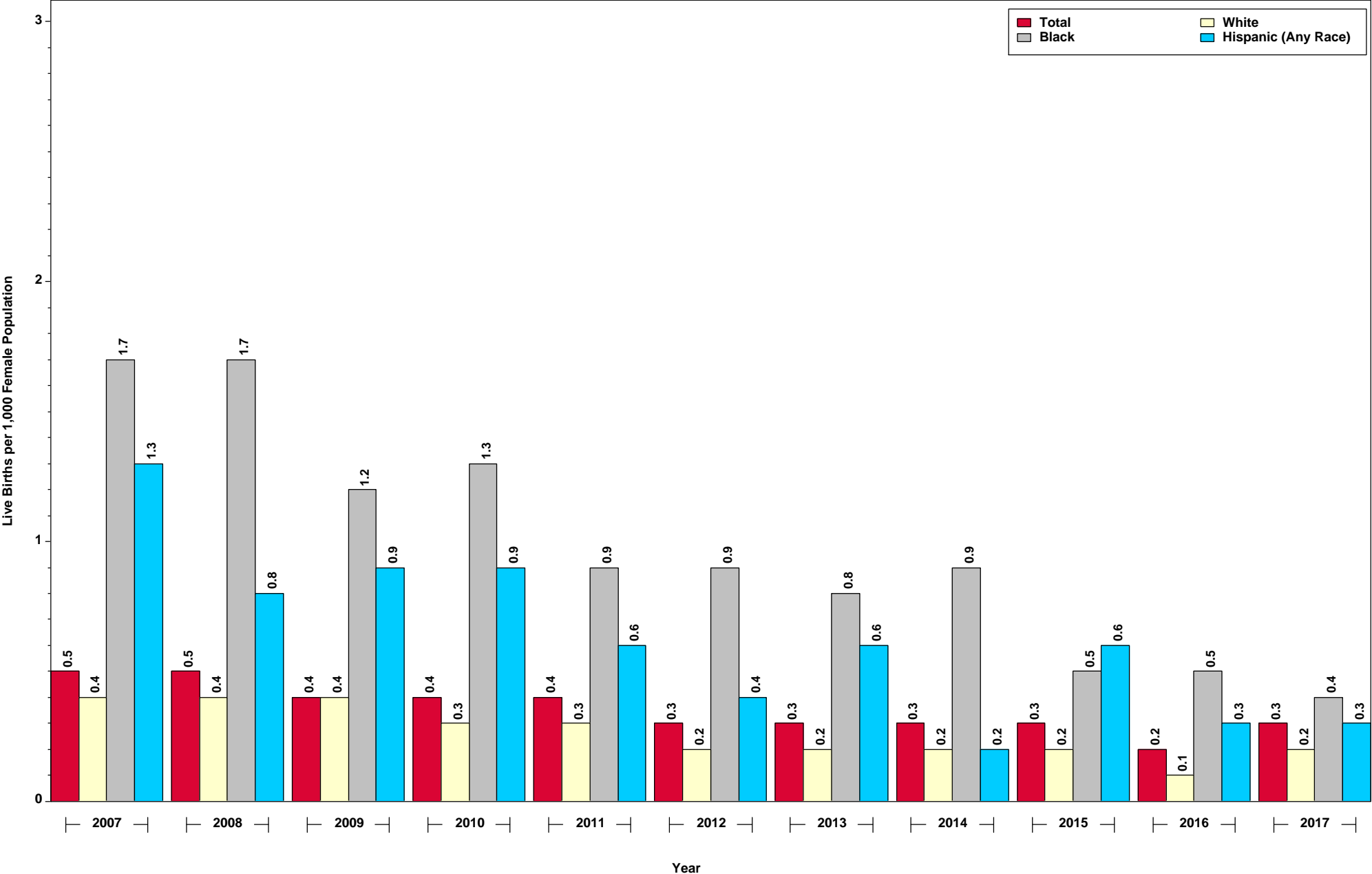
Total Fertility Rates by Year and Race/Ethnicity of Mother: Indiana Residents, 2007 to 2017



This figure was run on November 2, 2018.
Source: ISDH, ERC, DAT; Table 13 (2017)

Figure 19

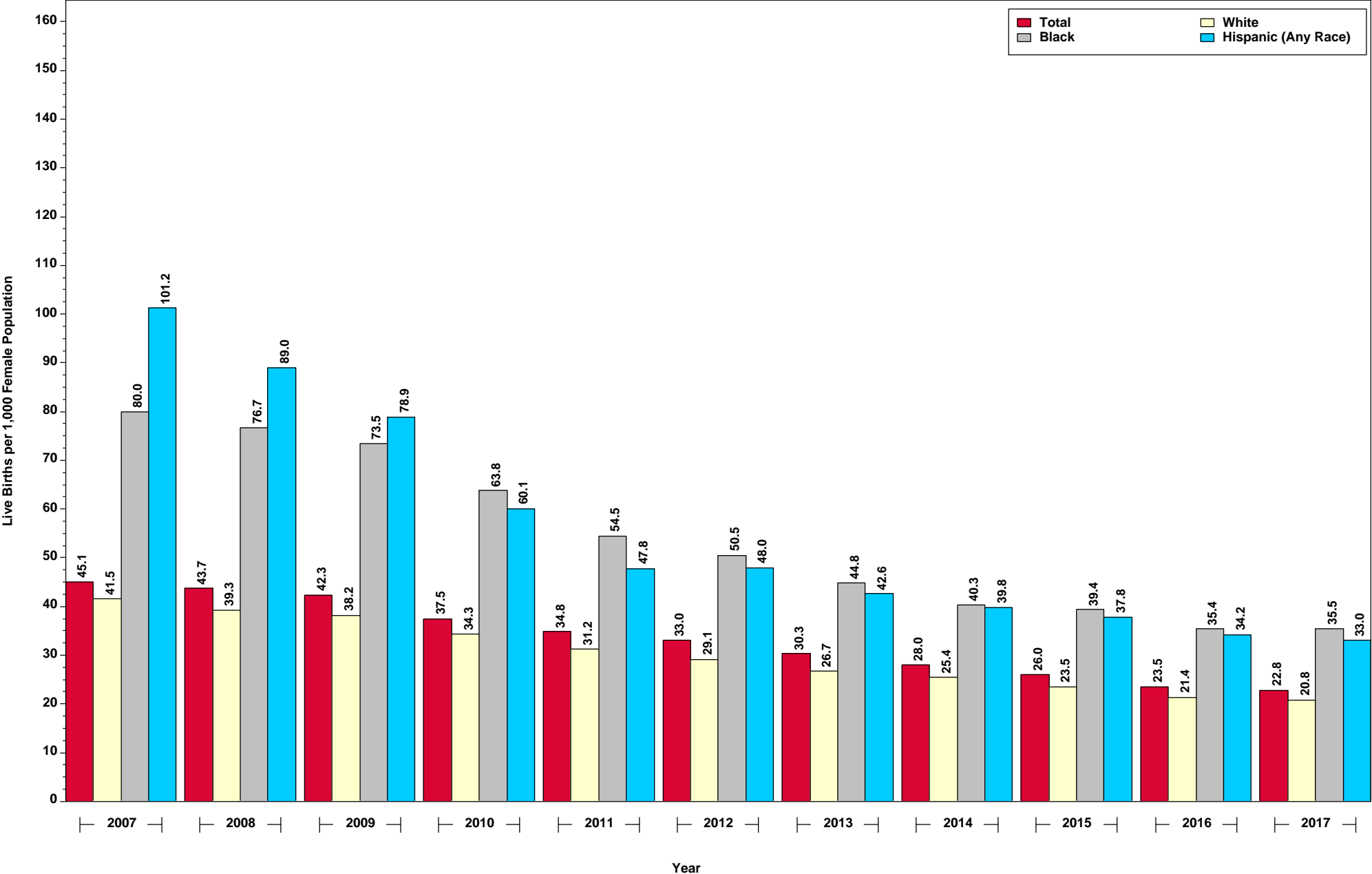
Birth Rates for Ages Under 15 by Race/Ethnicity of Mother: Indiana Residents, 2007 to 2017



This figure was run on November 2, 2018.
Source: ISDH, ERC, DAT; Table 13 (2017)

Figure 20

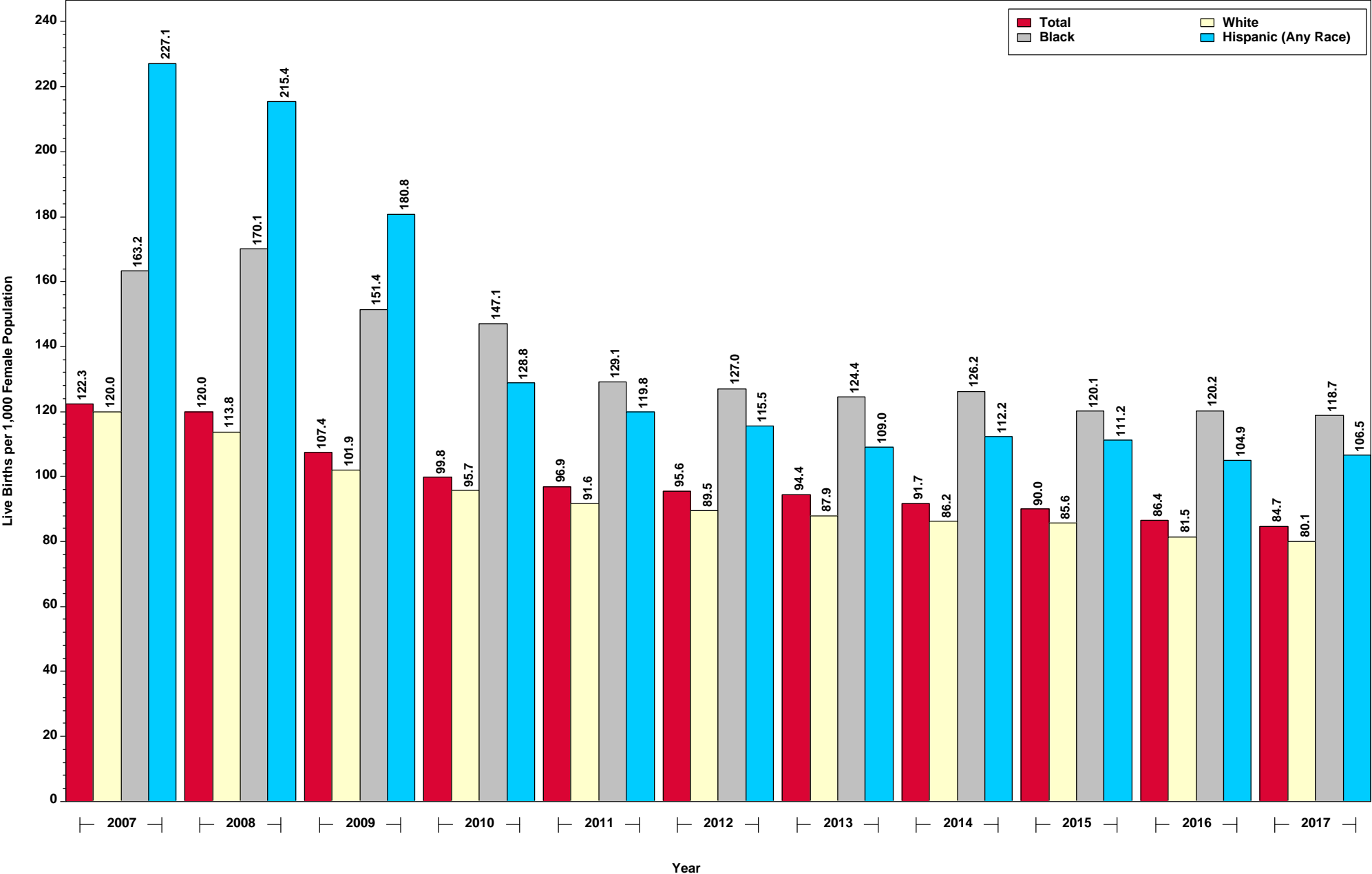
Birth Rates for Ages 15 to 19 by Race/Ethnicity of Mother: Indiana Residents, 2007 to 2017



This figure was run on November 2, 2018.
Source: ISDH, ERC, DAT; Table 13 (2017)

Figure 21

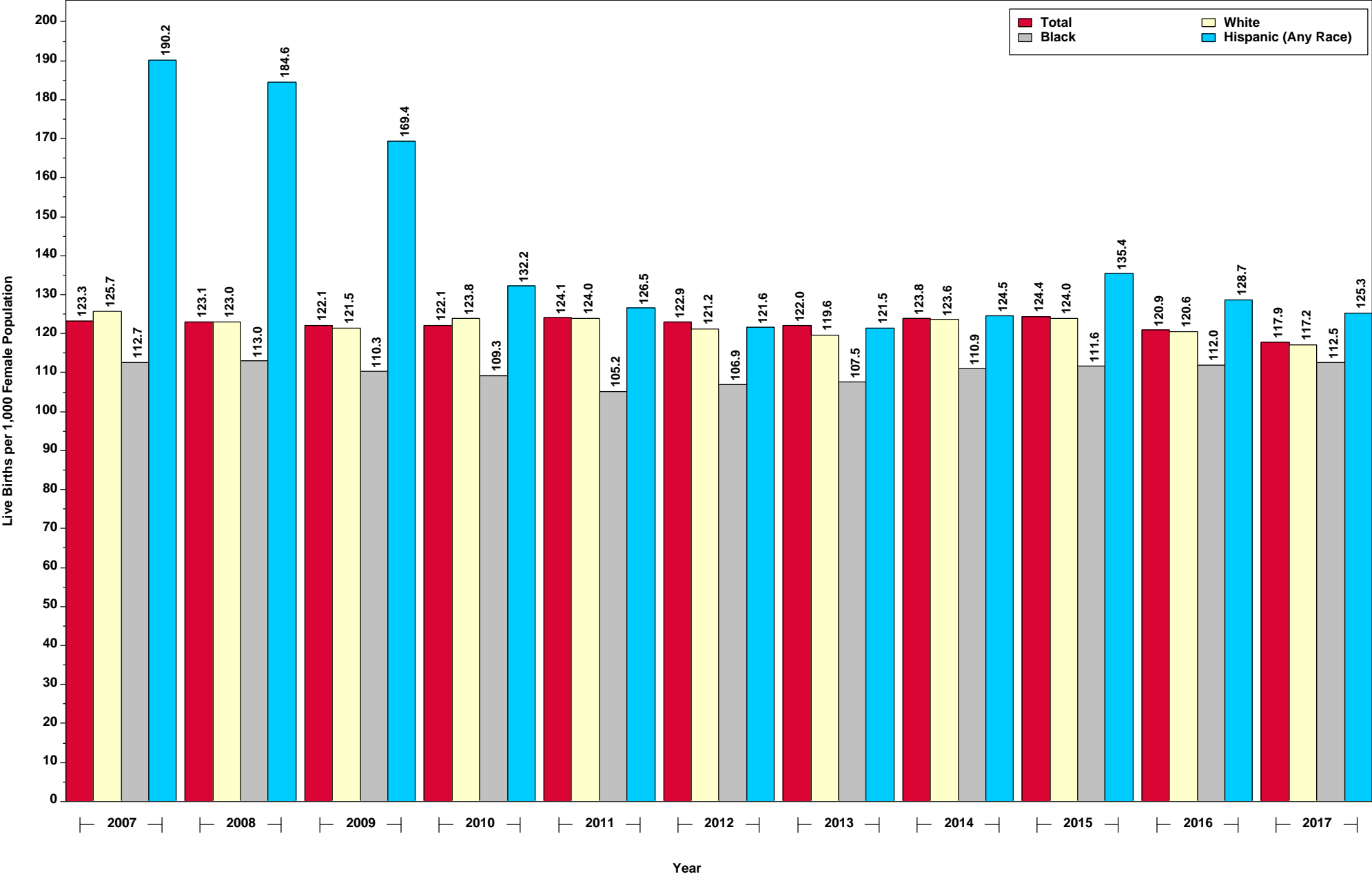
Birth Rates for Ages 20 to 24 by Race/Ethnicity of Mother: Indiana Residents, 2007 to 2017



This figure was run on November 2, 2018.
Source: ISDH, ERC, DAT; Table 13 (2017)

Figure 22

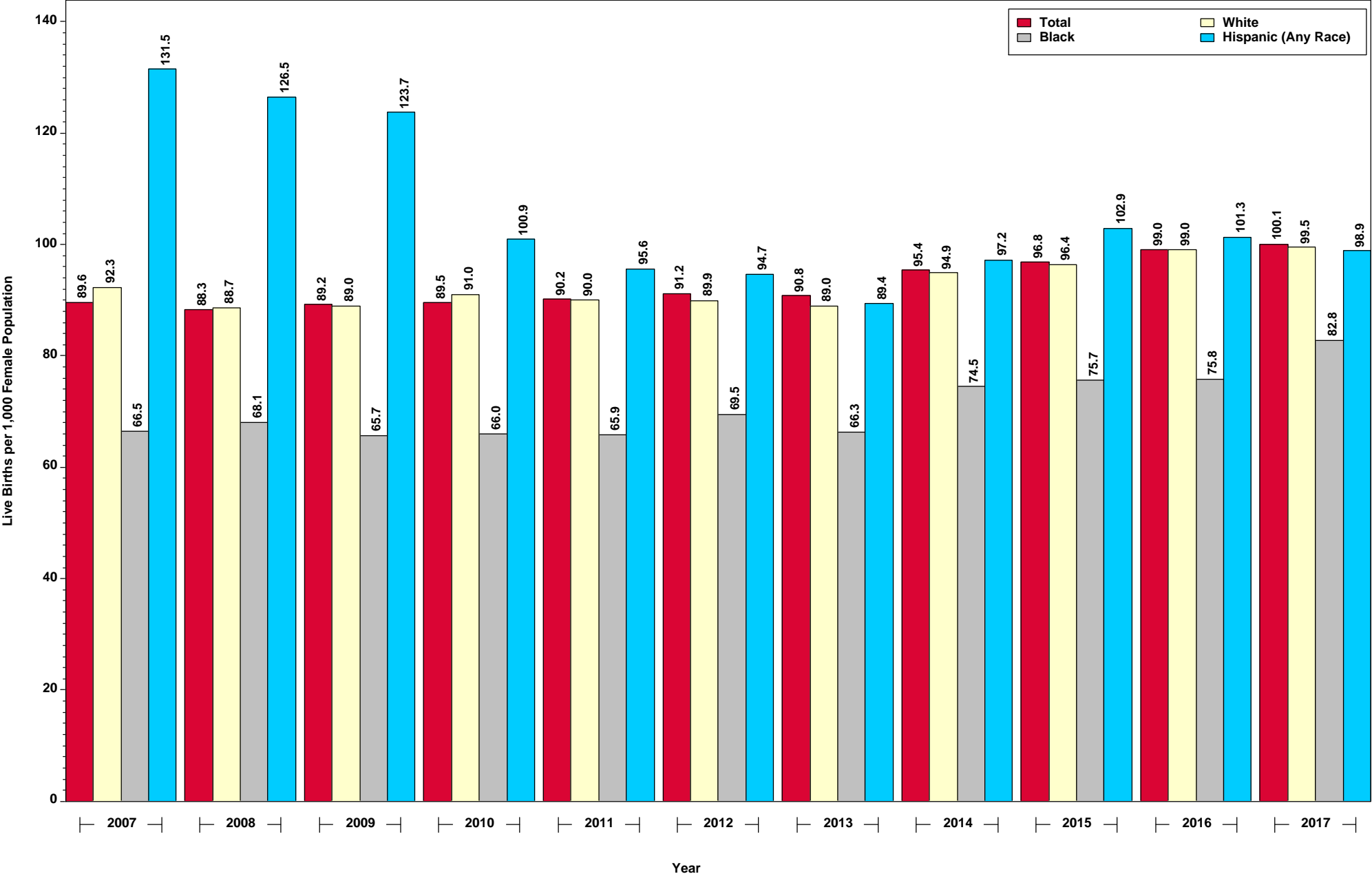
Birth Rates for Ages 25 to 29 by Race/Ethnicity of Mother: Indiana Residents, 2007 to 2017



This figure was run on November 2, 2018.
Source: ISDH, ERC, DAT; Table 13 (2017)

Figure 23

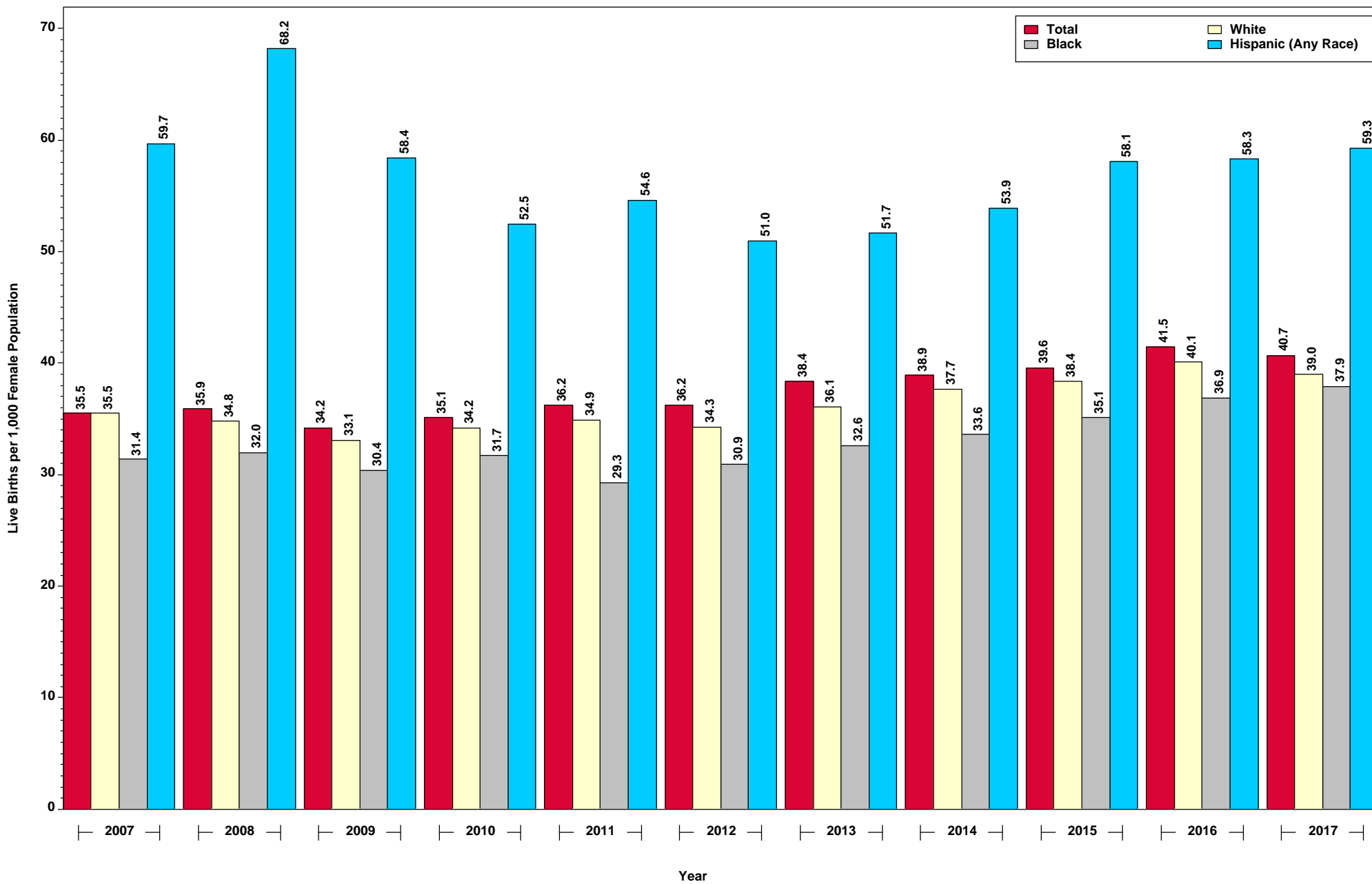
Birth Rates for Ages 30 to 34 by Race/Ethnicity of Mother: Indiana Residents, 2007 to 2017



This figure was run on November 2, 2018.
Source: ISDH, ERC, DAT; Table 13 (2017)

Figure 24

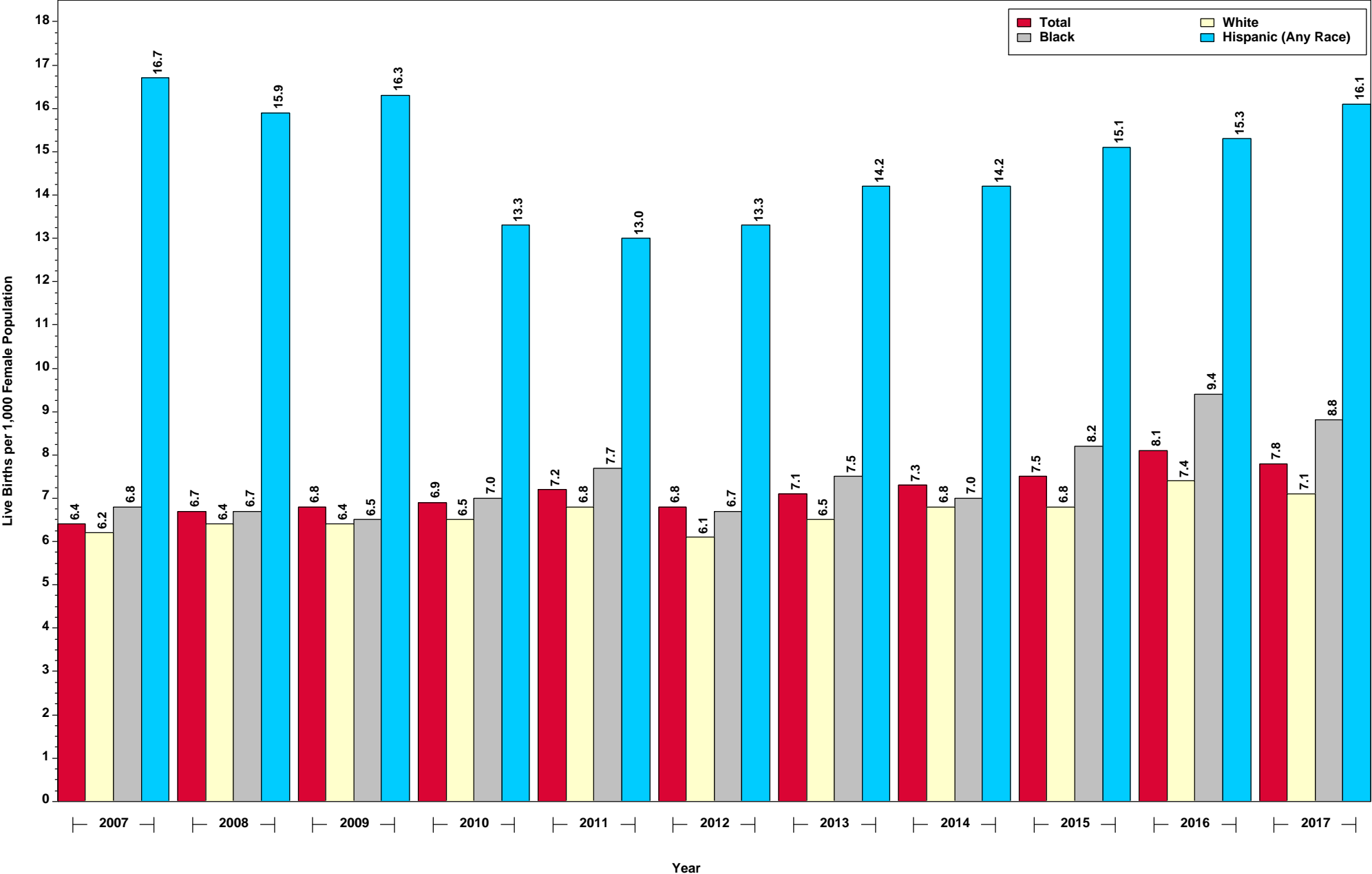
Birth Rates for Ages 35 to 39 by Race/Ethnicity of Mother: Indiana Residents, 2007 to 2017



This figure was run on November 2, 2018.
Source: ISDH, ERC, DAT; Table 13 (2017)

Figure 25

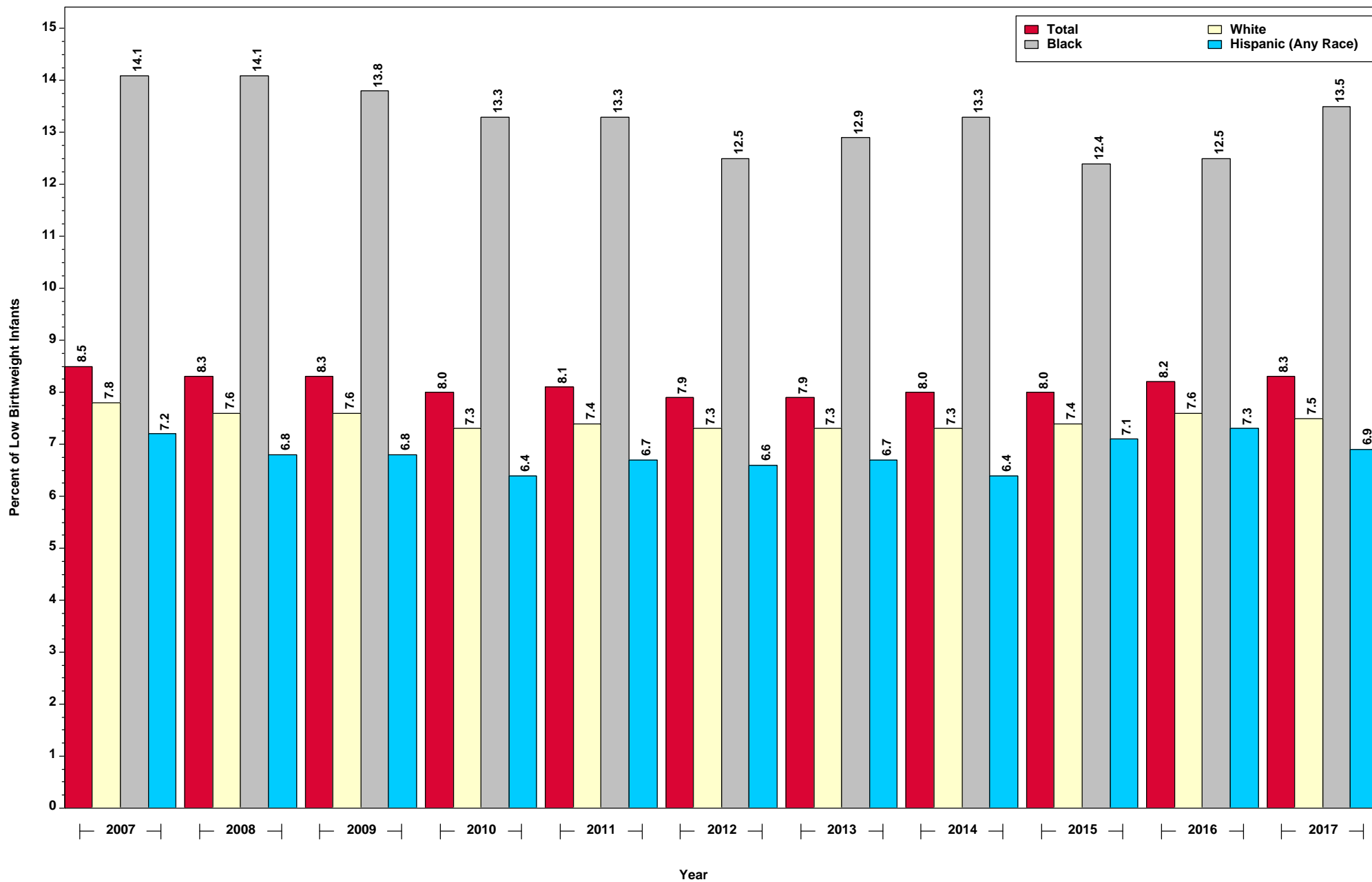
Birth Rates for Ages 40 to 44 by Race/Ethnicity of Mother: Indiana Residents, 2007 to 2017



This figure was run on November 2, 2018.
Source: ISDH, ERC, DAT; Table 13 (2017)

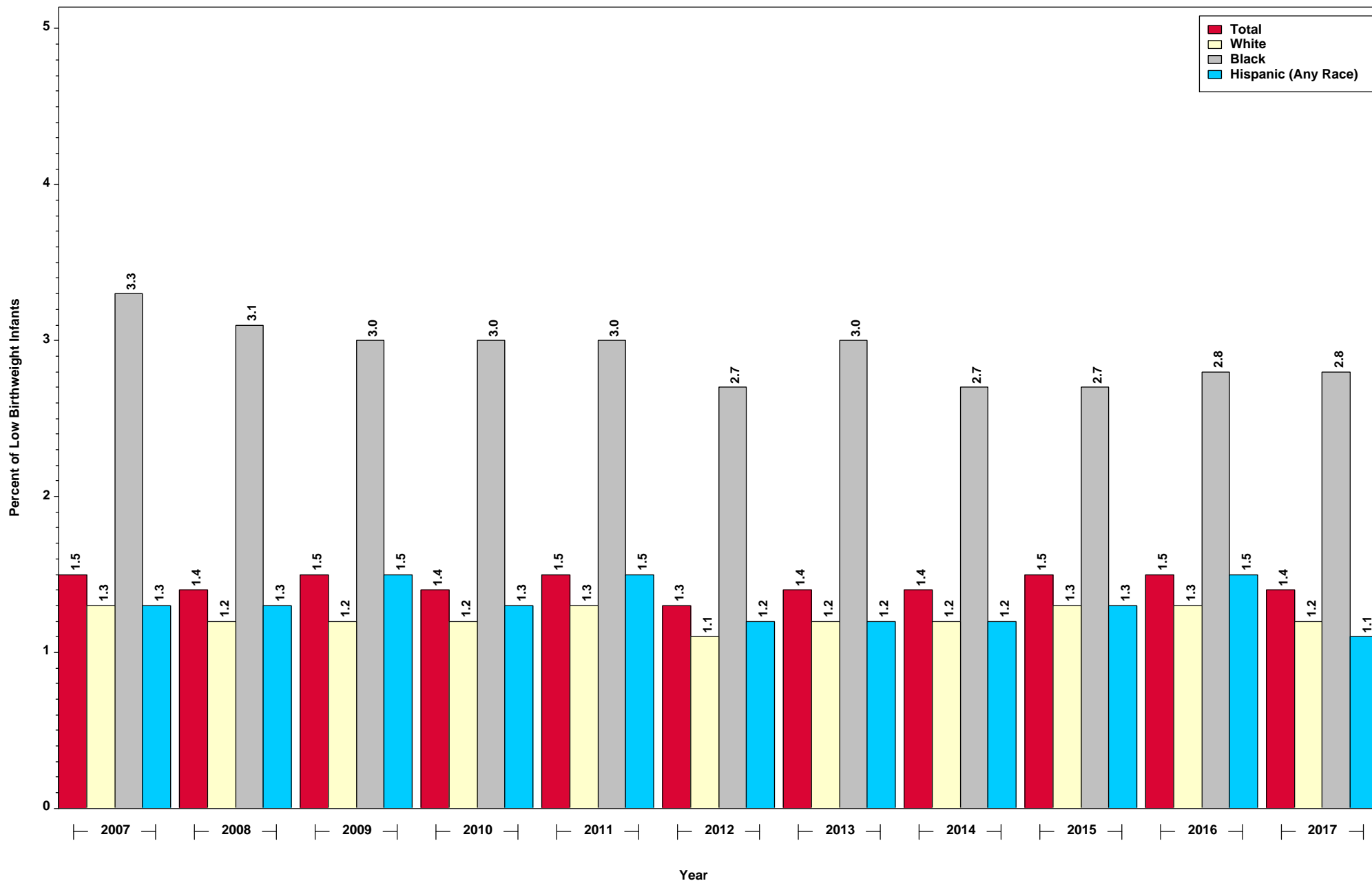
Figure 26

Percent of Live Births with Low Birthweight by Year and Race/Ethnicity of Mother: Indiana Residents, 2007 to 2017



This figure was run on November 2, 2018.
Source: ISDH, ERC, DAT; Table 5

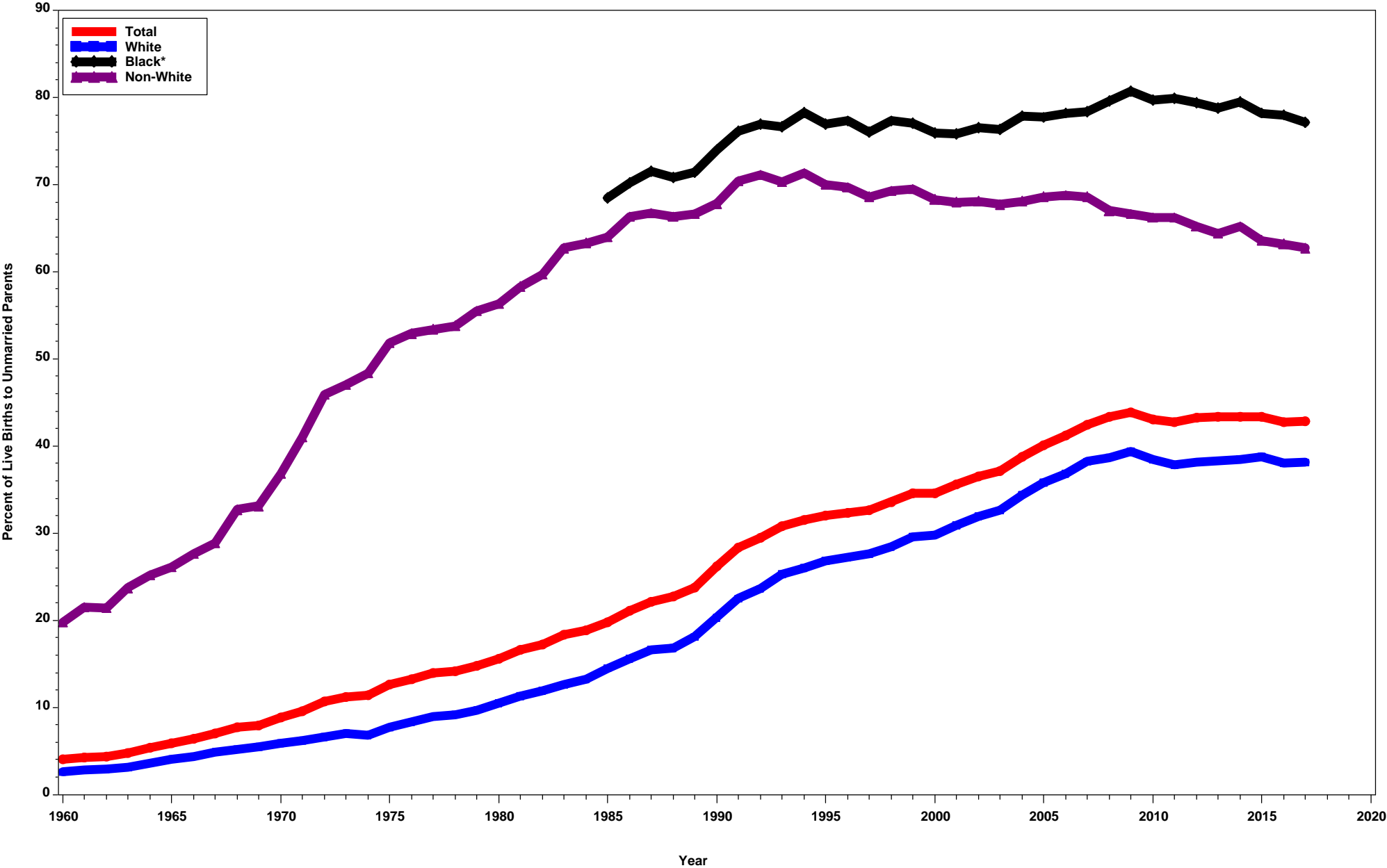
Figure 27
Percent of Live Births with Very Low Birthweight by Year and Race/Ethnicity of Mother:
Indiana Residents, 2007 to 2017



This figure was run on November 2, 2018.
 Source: ISDH, ERC, DAT; Table 6

Figure 28

Percent of Live Births to Unmarried Parents by Race of Mother: Indiana Residents, 1960-2017



This figure was run on November 2, 2018.
*Information not available prior to 1985. These births were reported as non-white.
Source: ISDH, ERC, DAT; Table 25