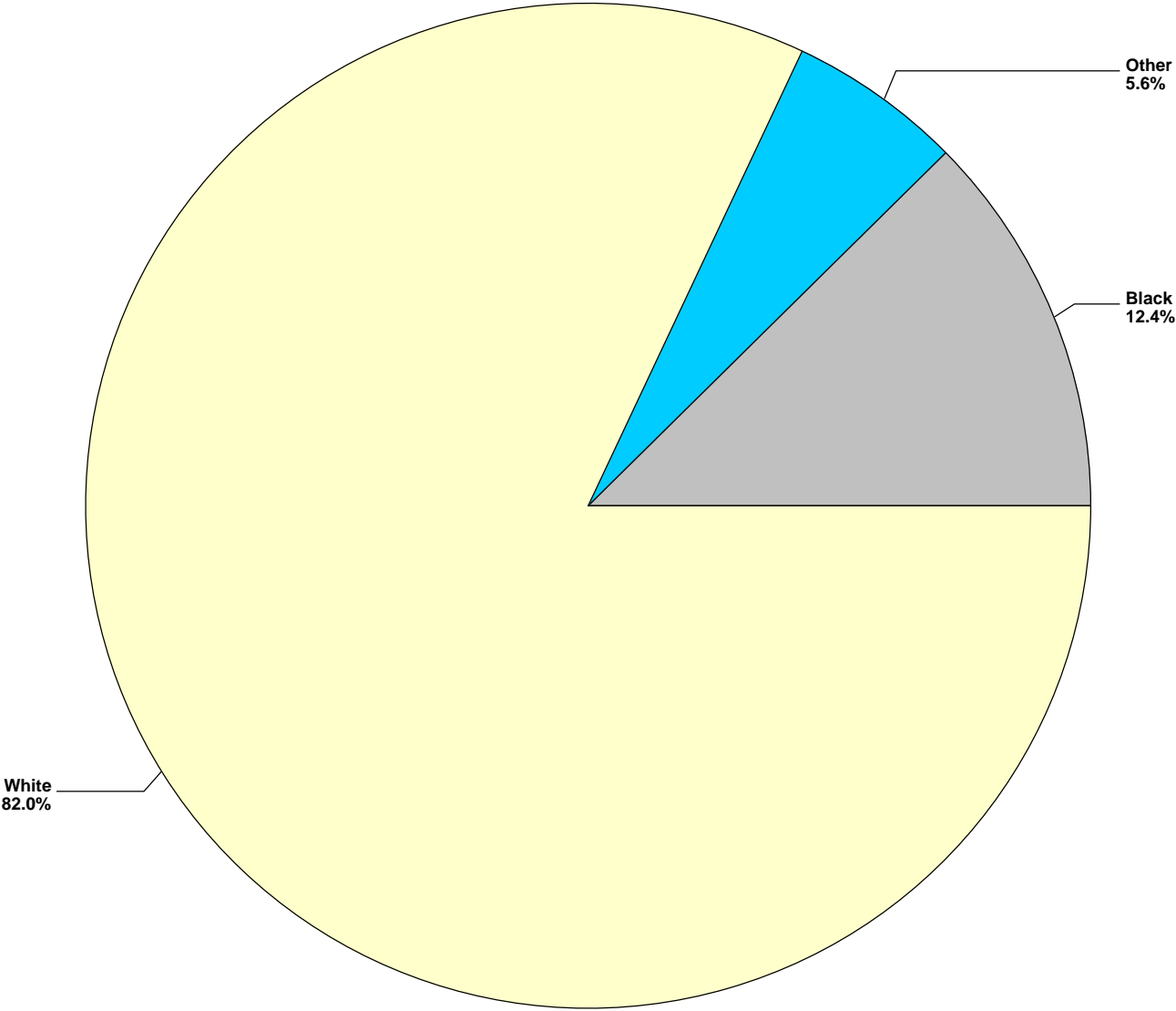


Figure 1

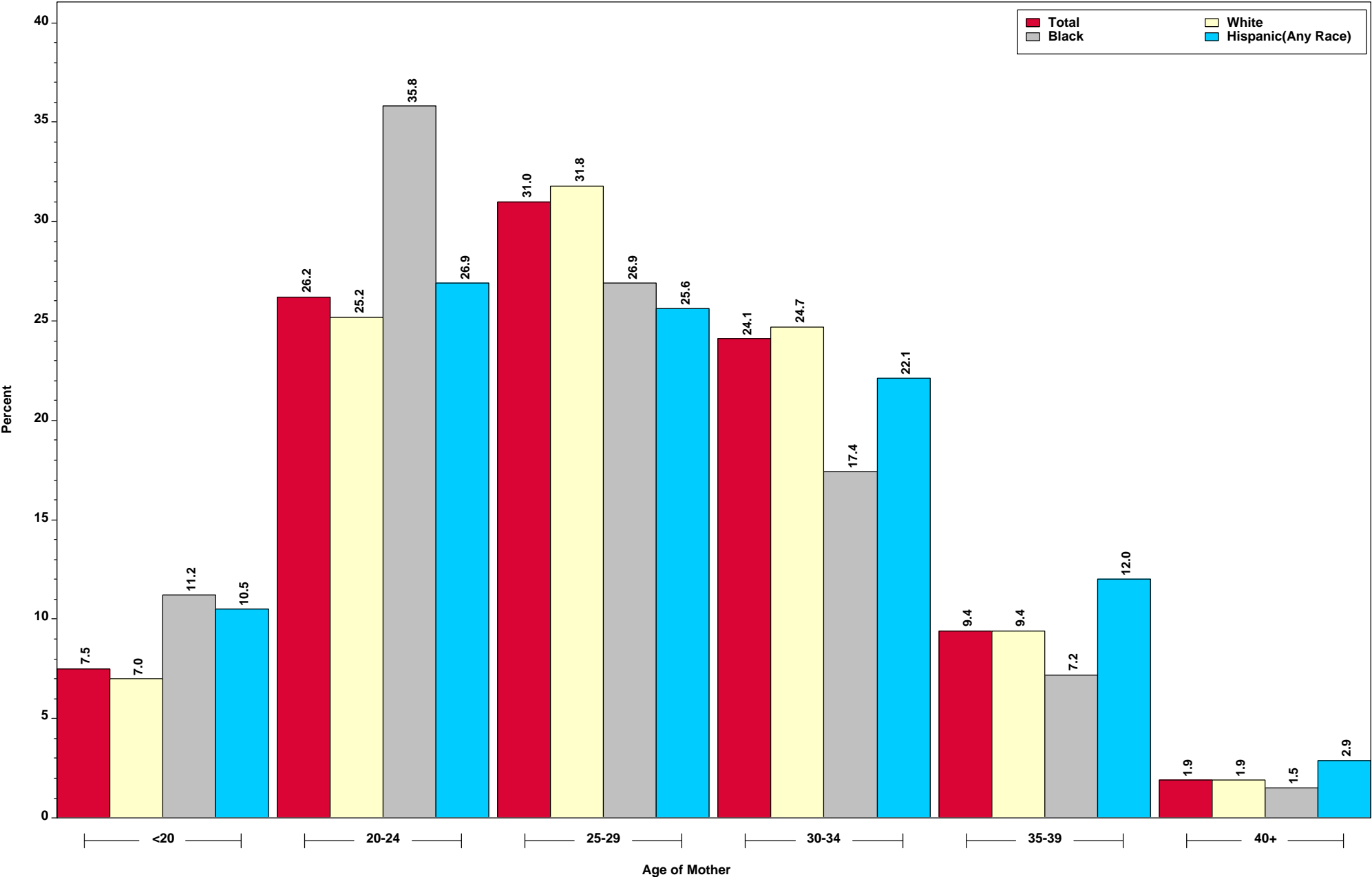
### Percent of Live Births by Race of Mother: Indiana Residents, 2014



This figure was run on November 30, 2015.  
Source: ISDH, ERC, DAT; Table 1.

Figure 2

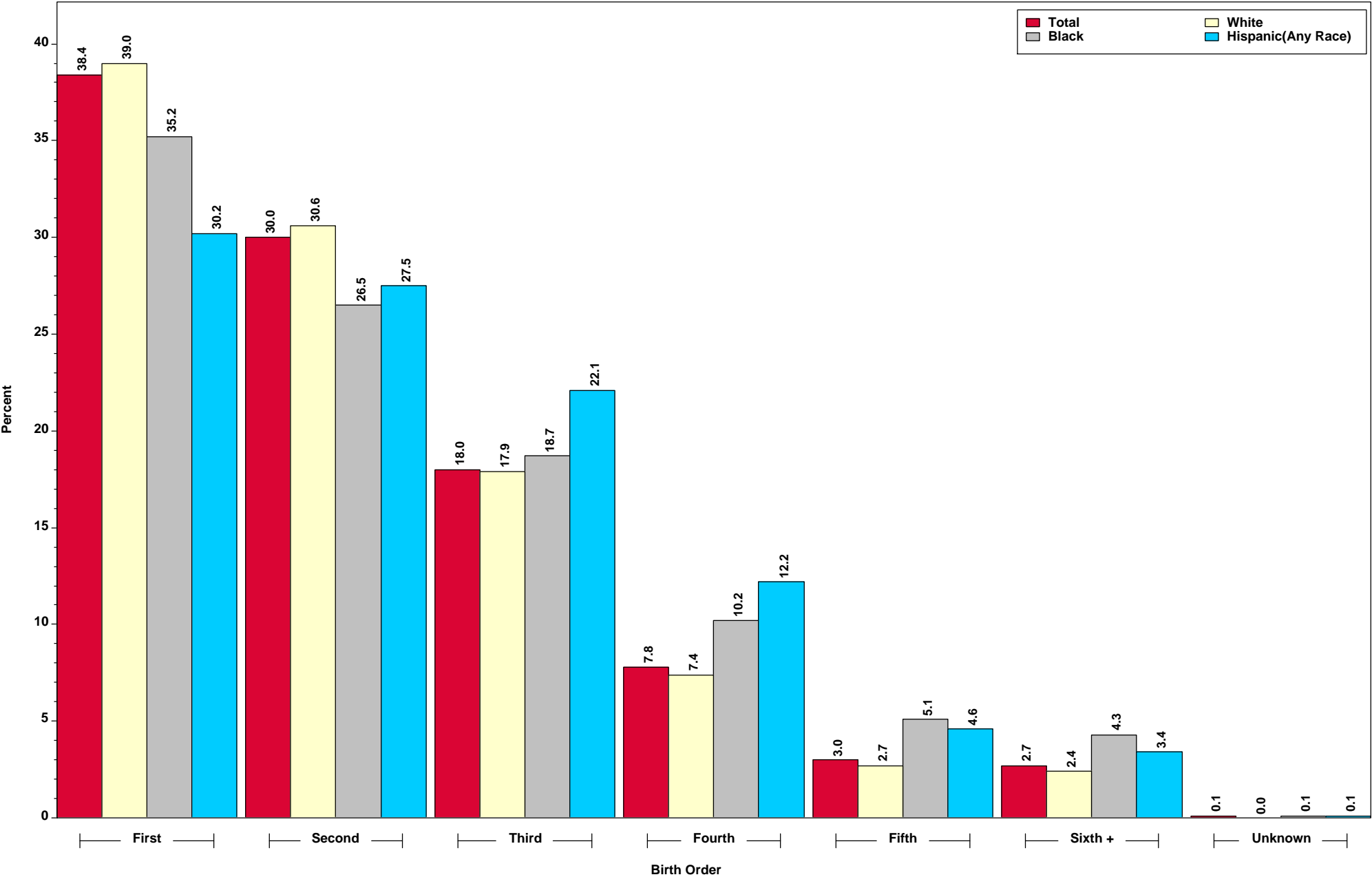
### Percent of Live Births by Age and Race/Ethnicity of Mother: Indiana Residents, 2014



This figure was run on November 30, 2015.  
Source: ISDH, ERC, DAT; Table 3

Figure 3

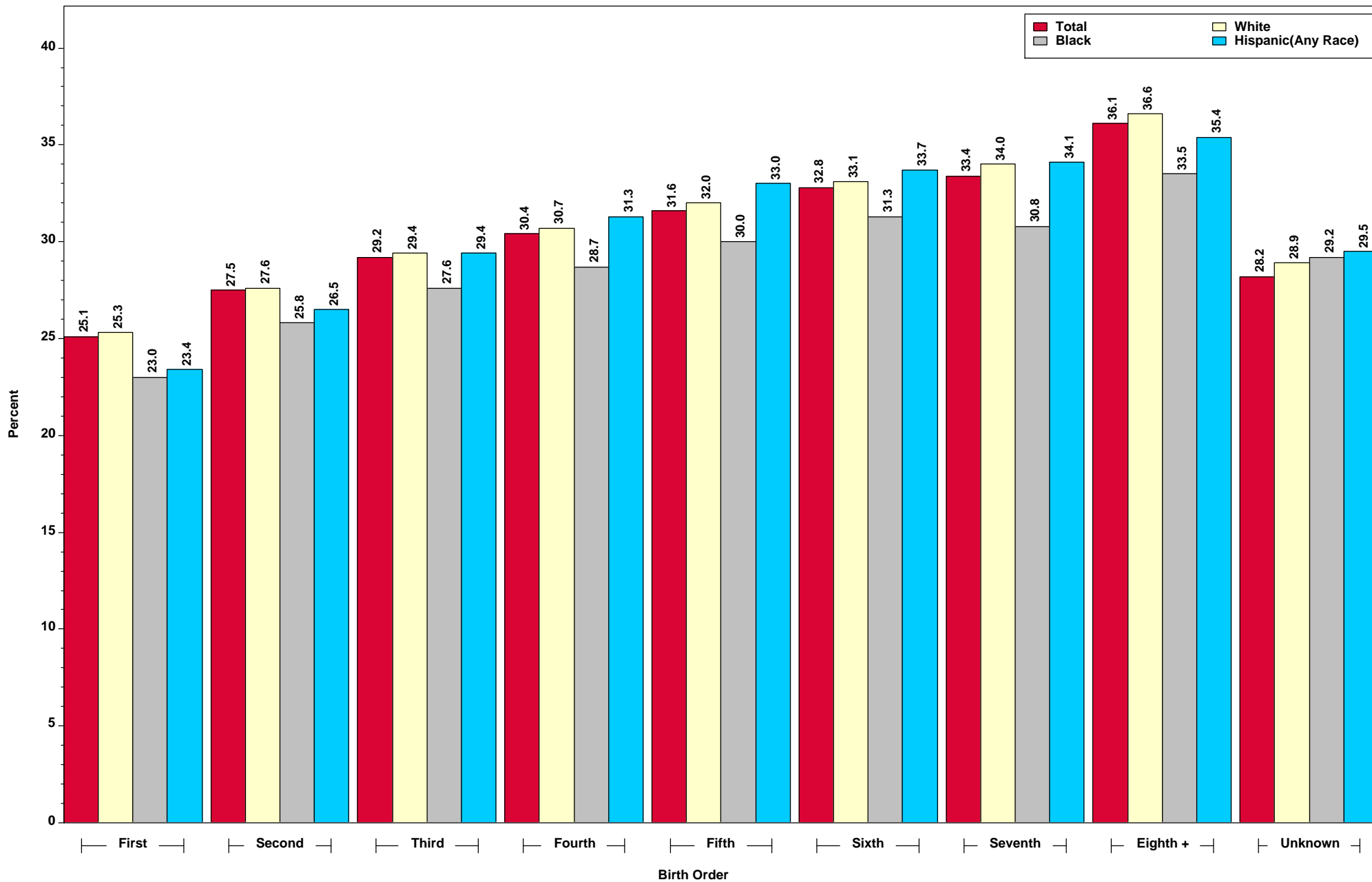
### Percent of Live Births by Birth Order and Race/Ethnicity of Mother: Indiana Residents, 2014



This figure was run on November 30, 2015.  
Source: ISDH, ERC, DAT; Table 7

Figure 4

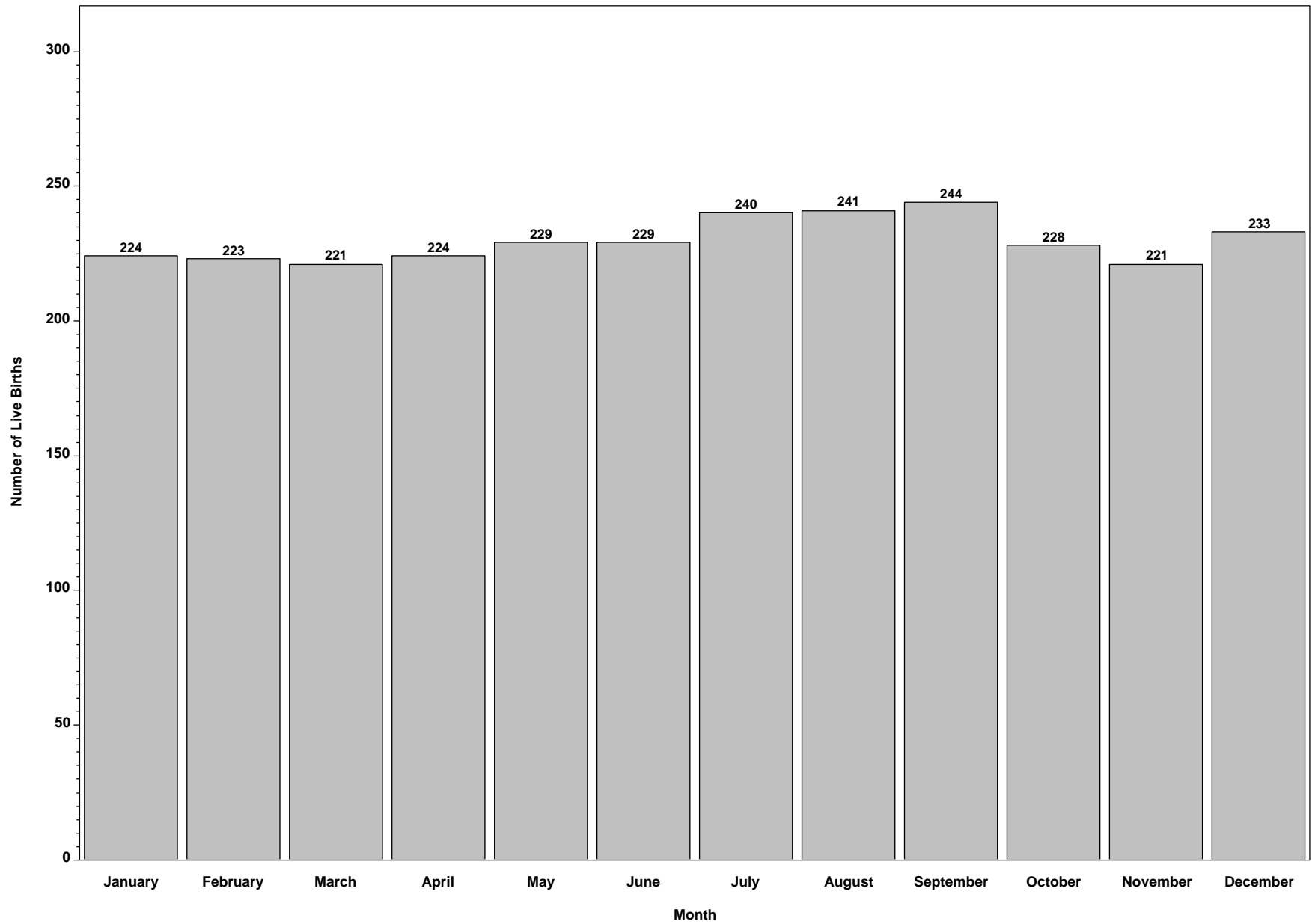
### Average Age of Mother by Live Birth Order and Race/Ethnicity of Mother: Indiana Residents, 2014



This figure was run on November 30, 2015.  
Source: ISDH, ERC, DAT

Figure 5

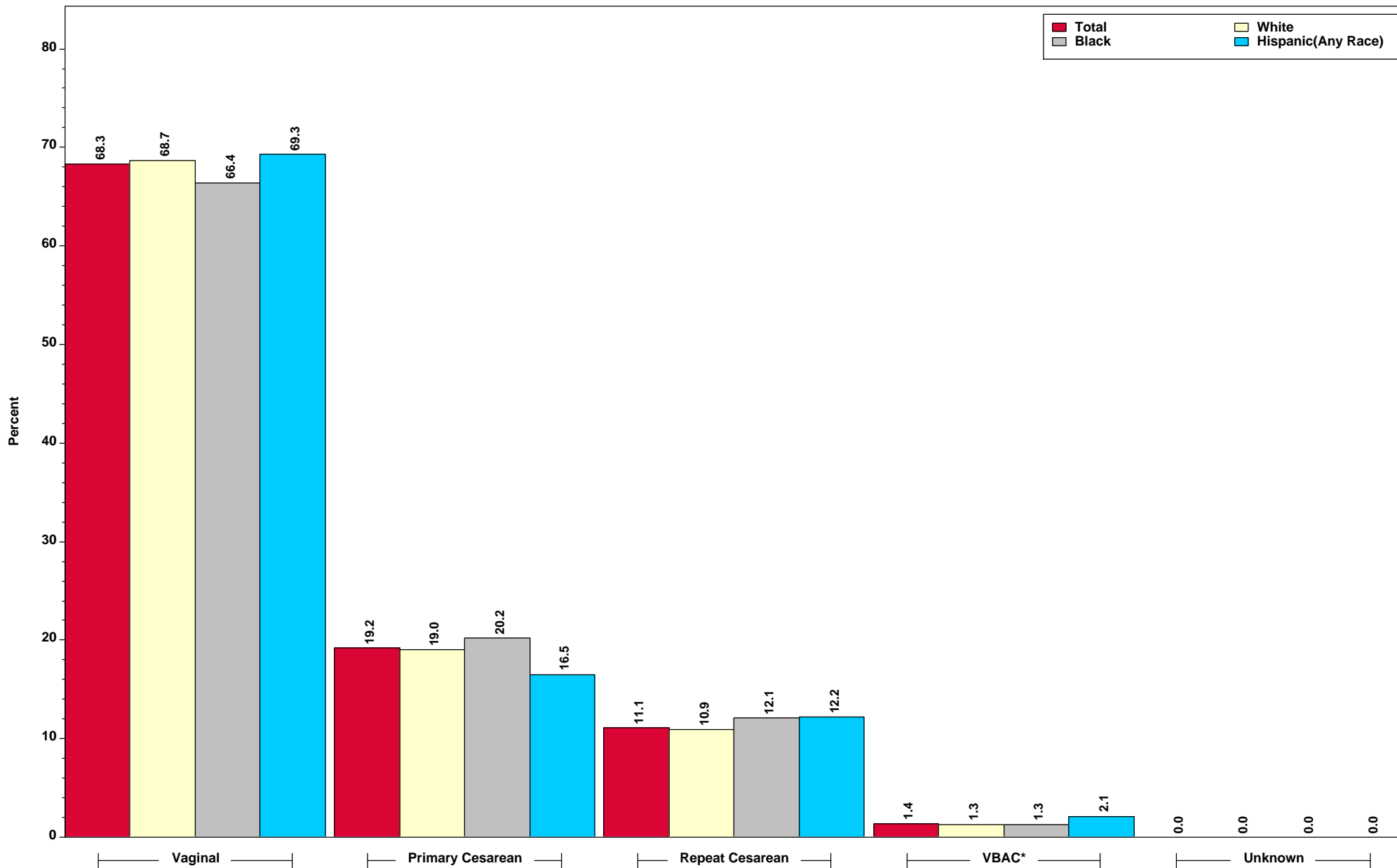
### Average Number of Live Births per Day by Month: Indiana Residents, 2014



This figure was run on November 30, 2015.  
Source: ISDH, ERC, DAT; Table 4

Figure 6

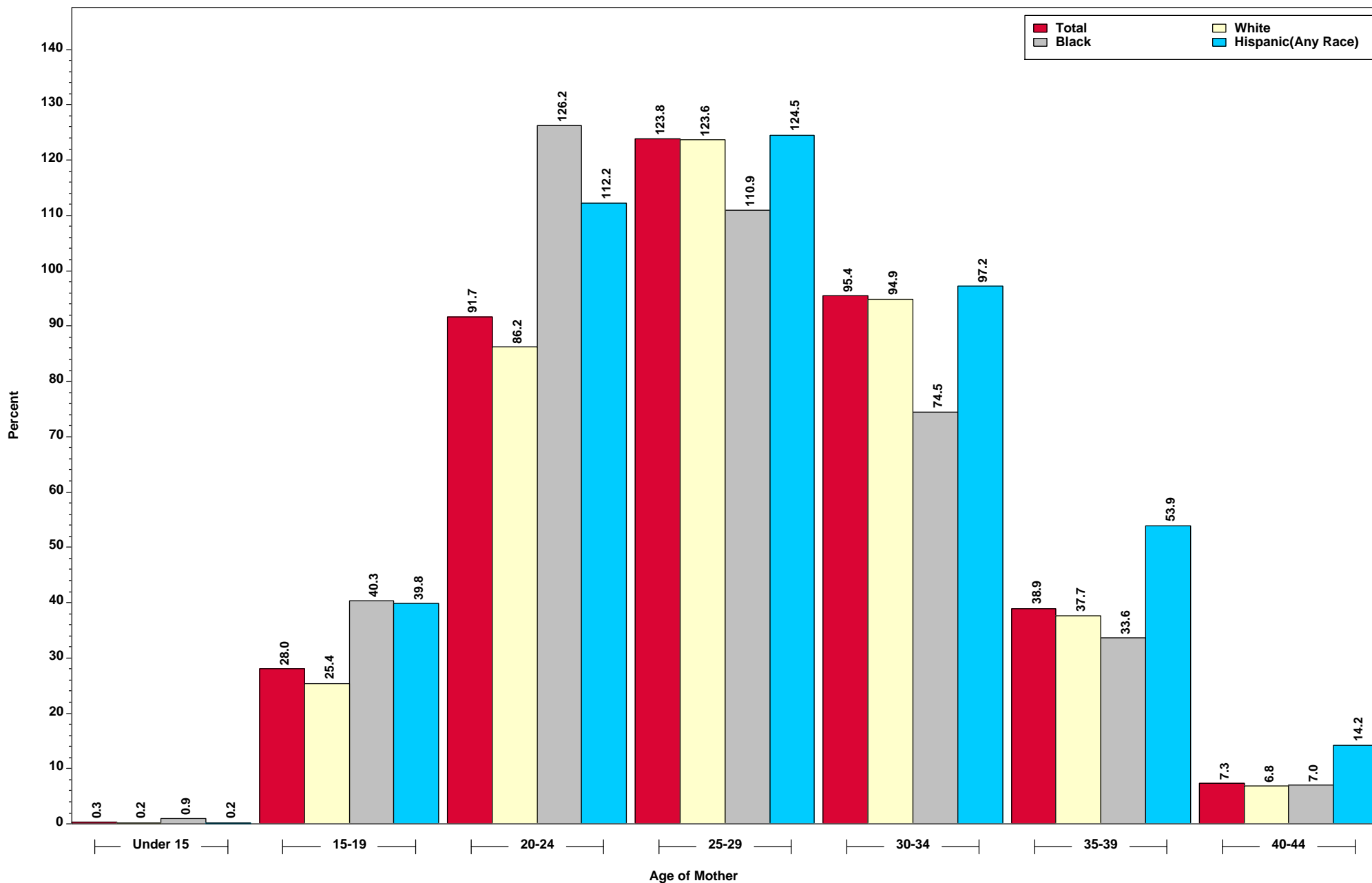
### Percent of Live Births by Method of Delivery and Race/Ethnicity of Mother: Indiana Residents, 2014



This figure was run on November 30, 2015.  
Source: ISDH, ERC, DAT; Table 27a

Figure 7

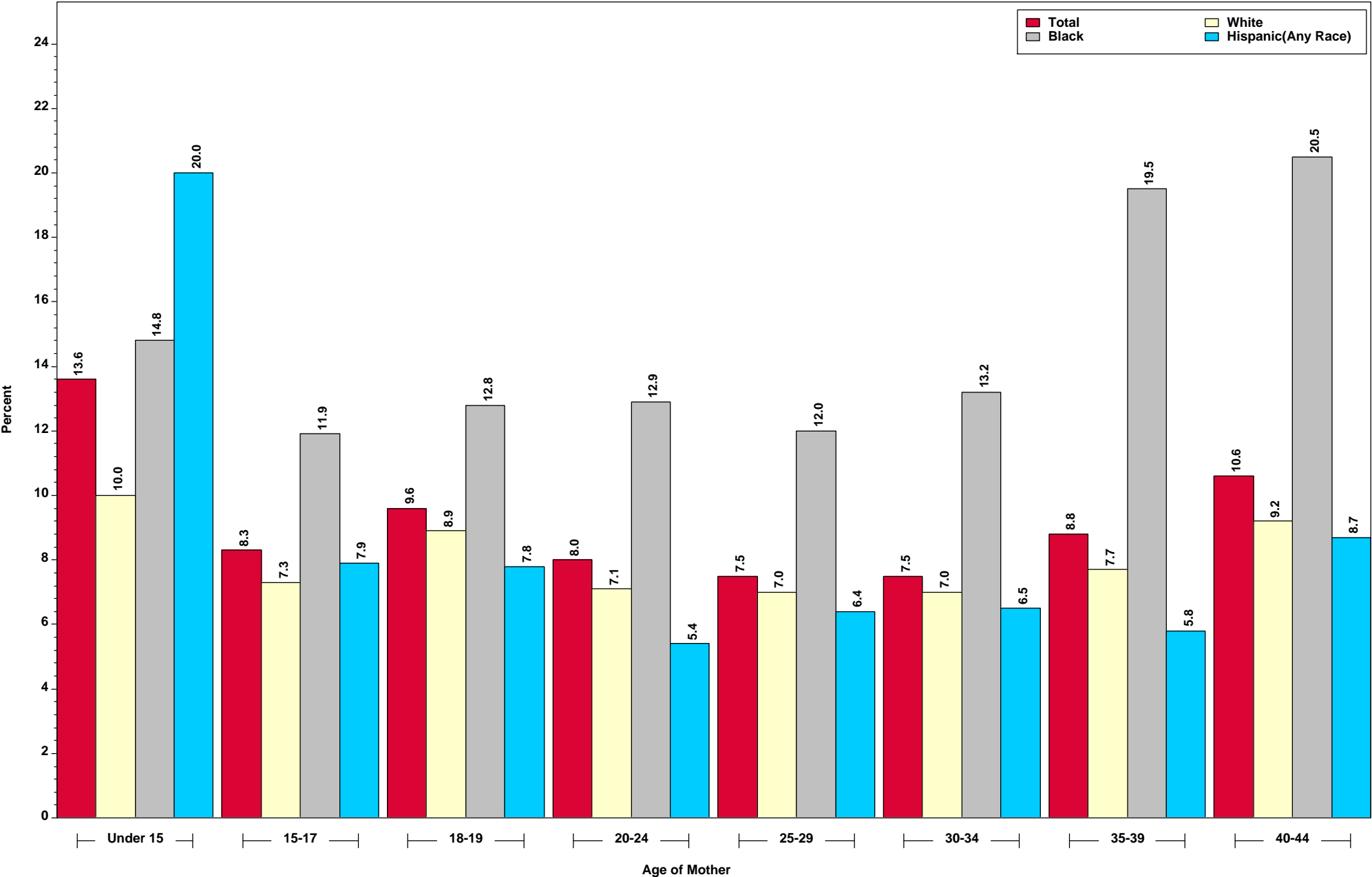
## Age-Specific Birth Rates by Race/Ethnicity of Mother: Indiana Residents, 2014



This figure was run on November 30, 2015.  
Source: ISDH, ERC, DAT; Table 13

Figure 8

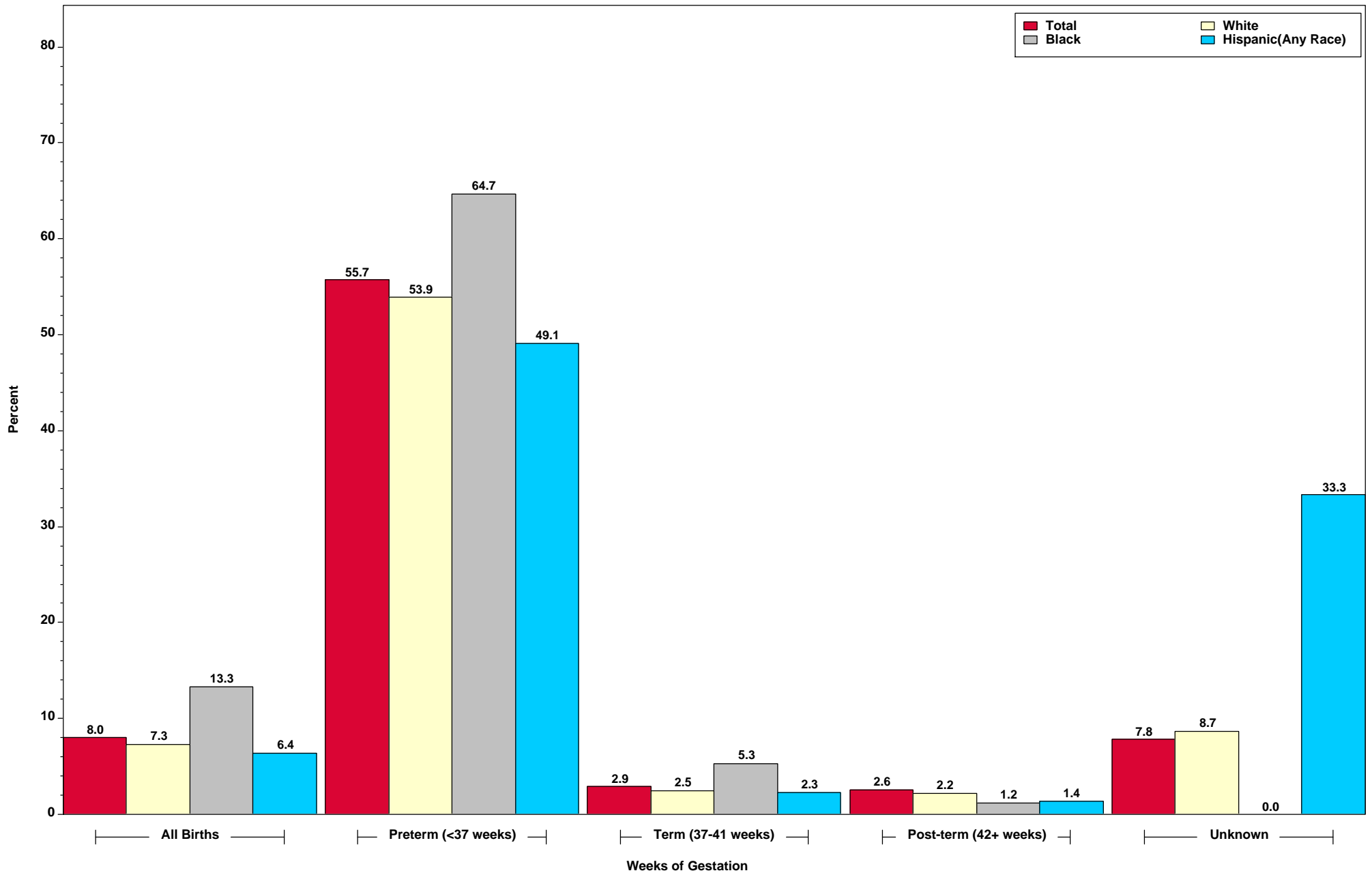
### Percent of Low Birthweight Infants by Age and Race/Ethnicity of Mother: Indiana Residents, 2014



This figure was run on November 30, 2015.  
Source: ISDH, ERC, DAT; Table 14



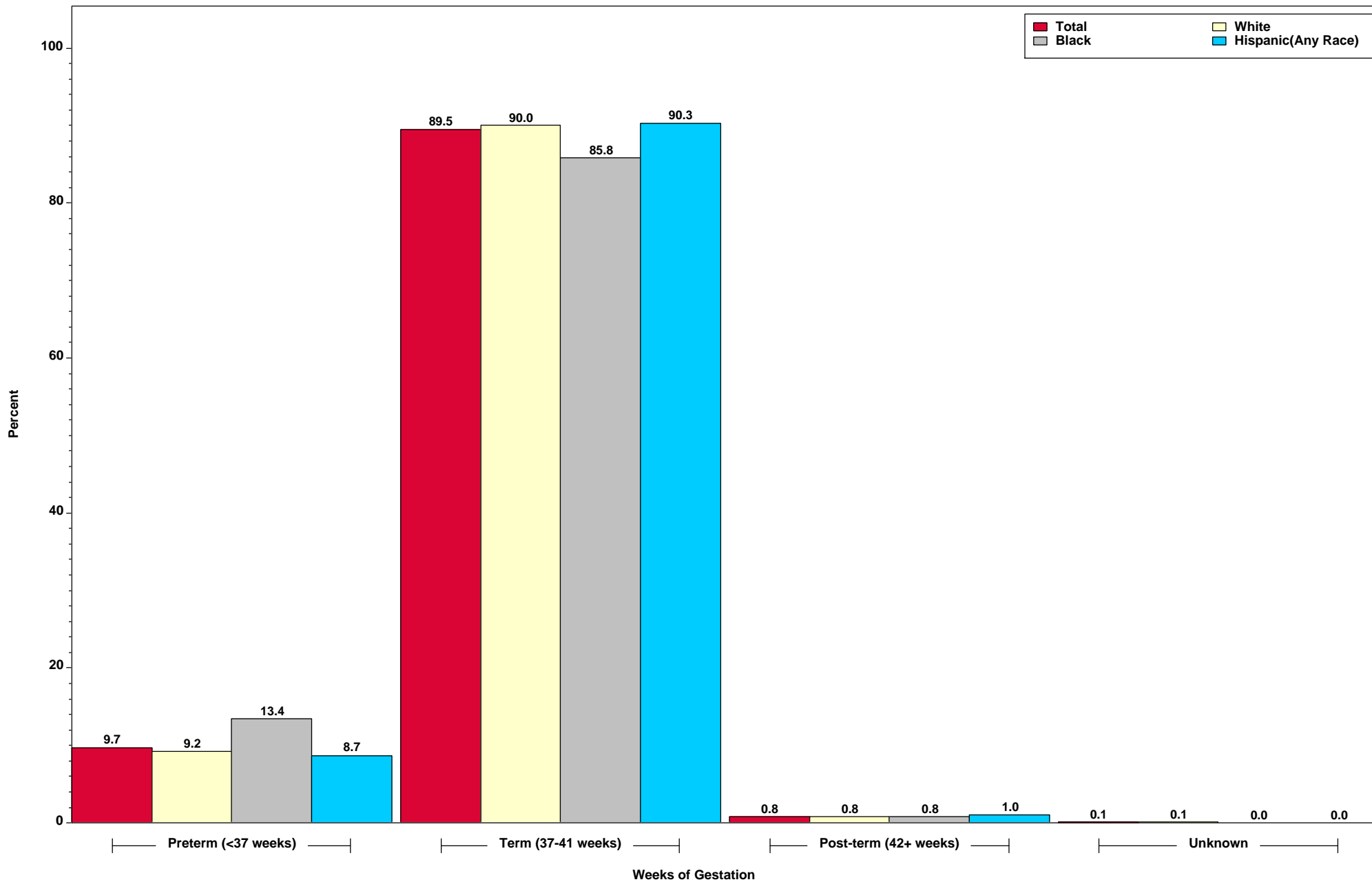
**Figure 9**  
**Percent of Low Birthweight Infants by Weeks of Gestation and Race/Ethnicity of Mother:**  
**Indiana Residents, 2014**



This figure was run on November 30, 2015.  
 Source: ISDH, ERC, DAT

Figure 10

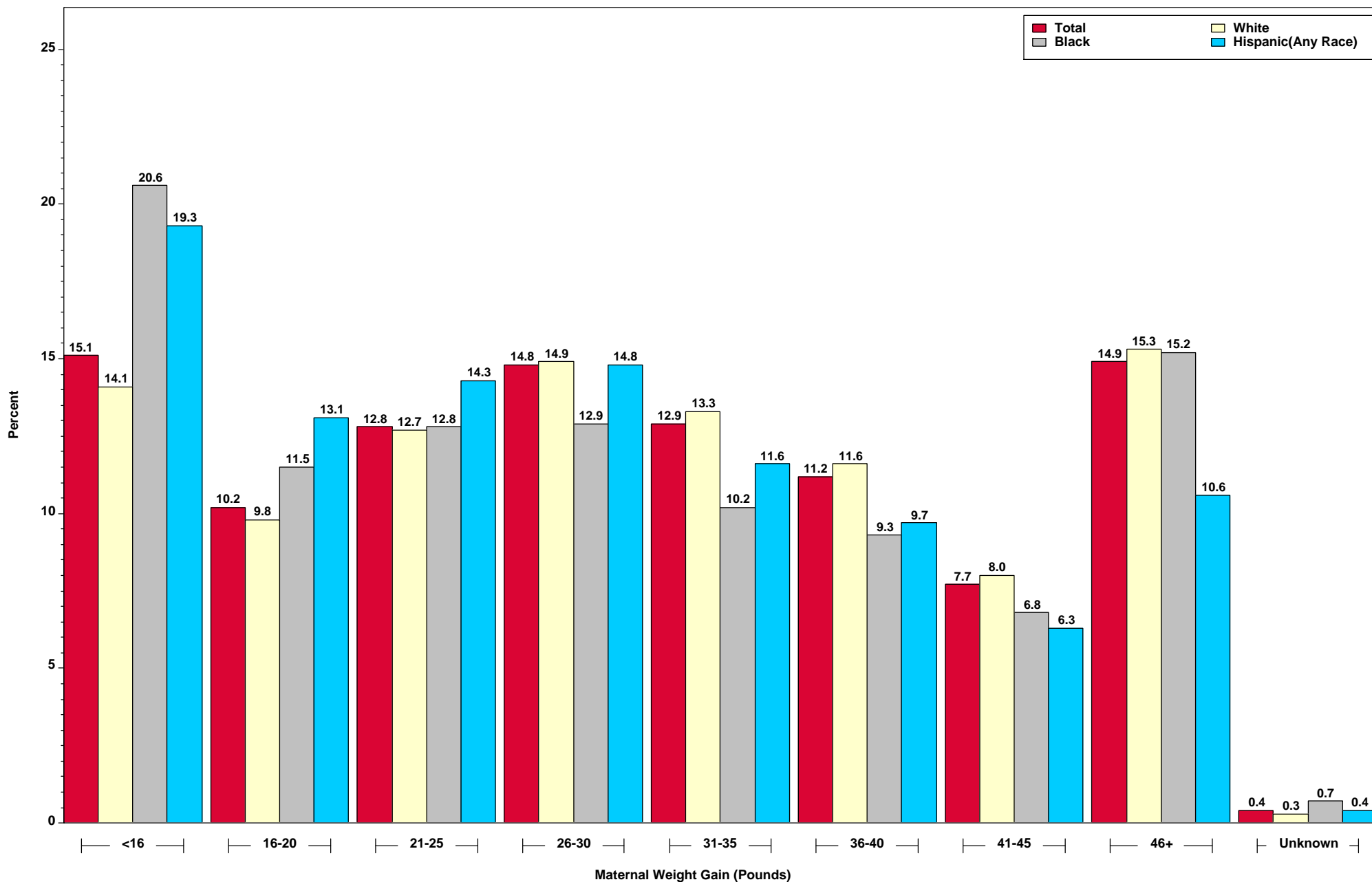
### Percent of Live Births by Weeks of Gestation and Race/Ethnicity of Mother: Indiana Residents, 2014



This figure was run on November 30, 2015.  
Source: ISDH, ERC, DAT; Table 18

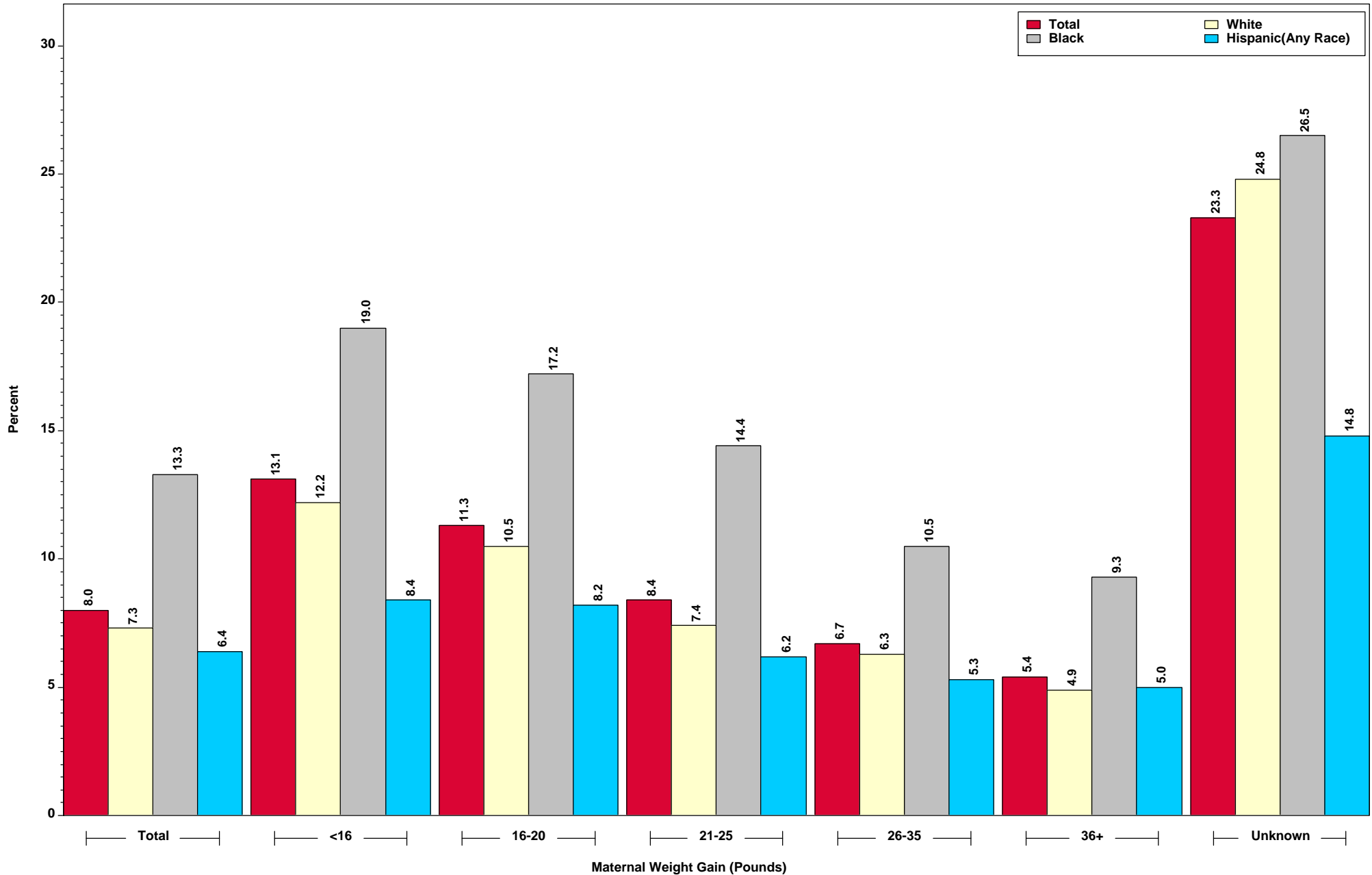
Figure 11

## Percent of Live Births by Maternal Weight Gain and Race/Ethnicity of Mother: Indiana Residents, 2014



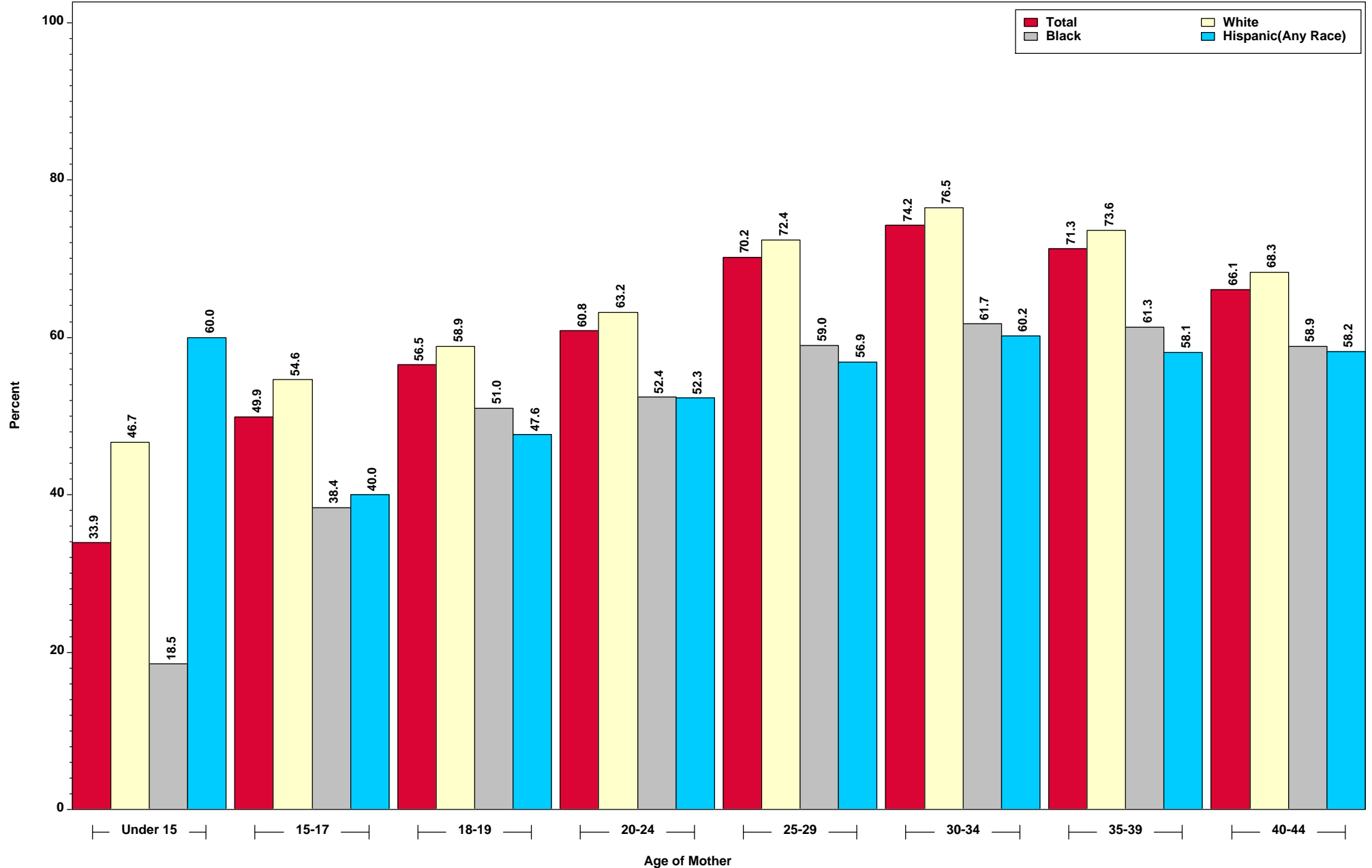
This figure was run on November 30, 2015.  
Source: ISDH, ERC, DAT

**Figure 12**  
**Percent of Low Birthweight Infants by Maternal Weight Gain and Race/Ethnicity of Mother:**  
**Indiana Residents, 2014**



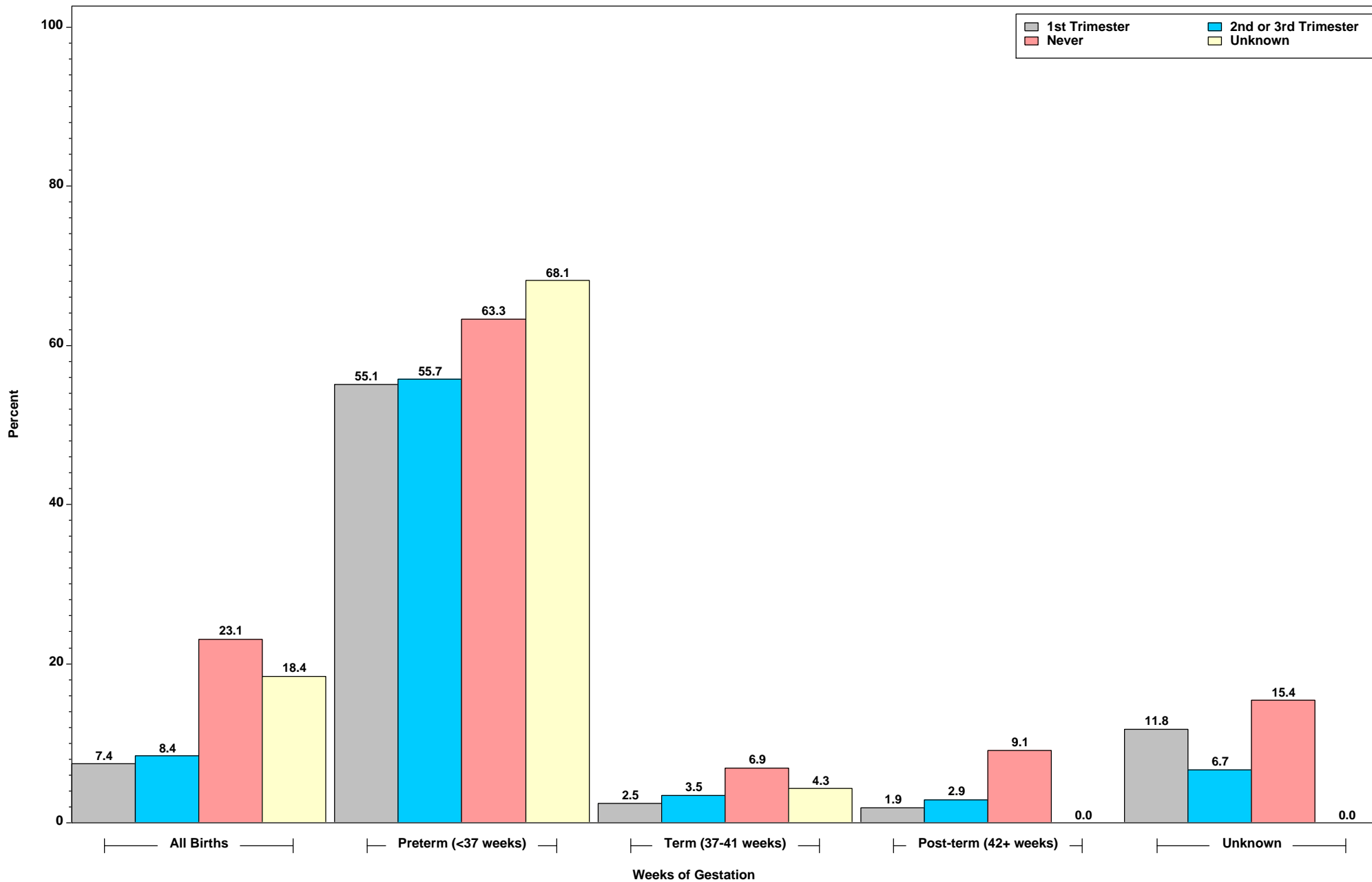
This figure was run on November 30, 2015.  
 Source: ISDH, ERC, DAT

**Figure 13**  
**Percent of Live Births with Prenatal Care in the First Trimester by Age and Race/Ethnicity of Mother:**  
**Indiana Residents, 2014**



This figure was run on November 30, 2015.  
 Source: ISDH, ERC, DAT; Table 24

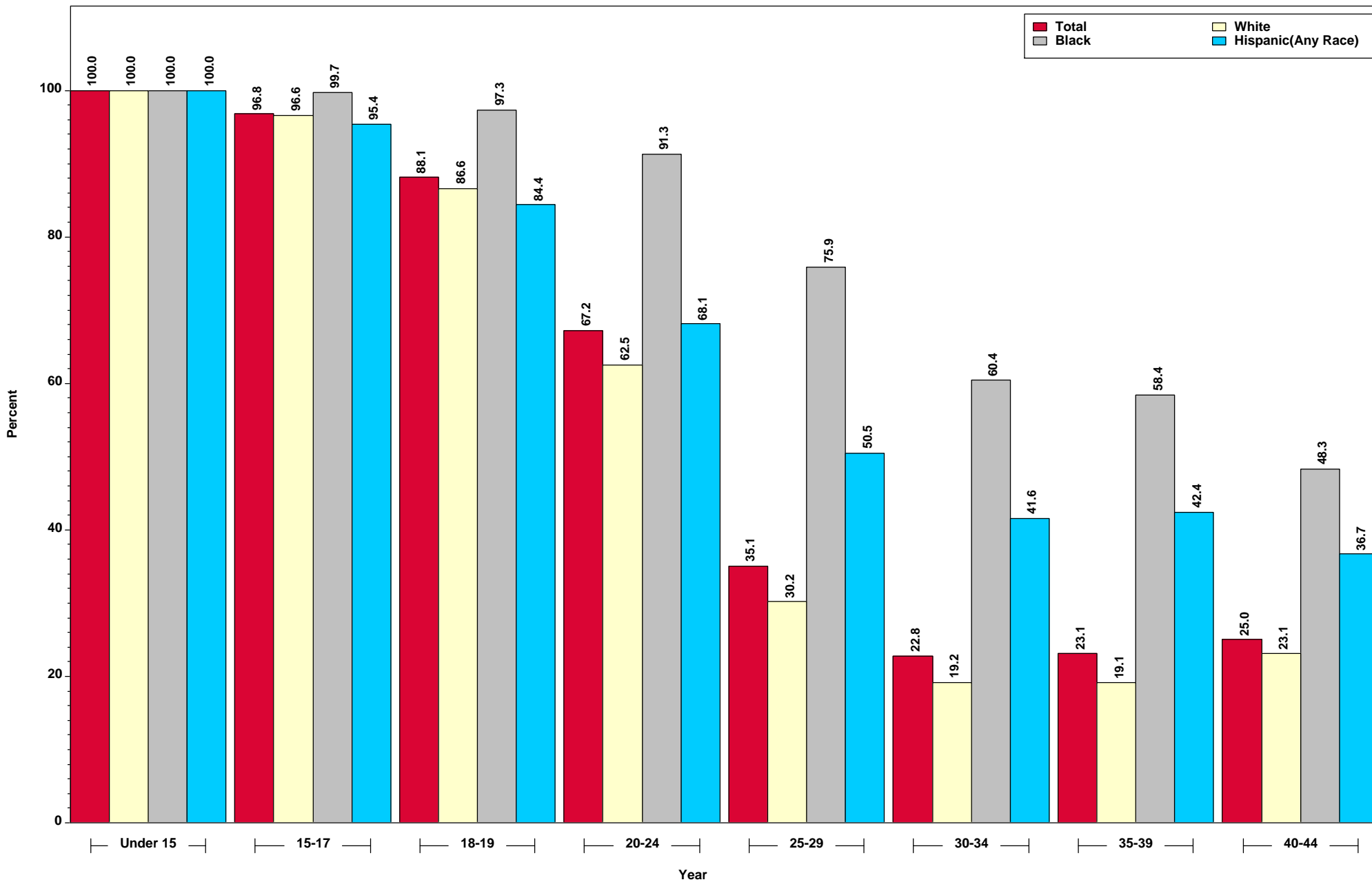
**Figure 14**  
**Percent of Low Birthweight Infants by Gestation and Trimester Prenatal Care Began:**  
**Indiana Residents, 2014**



This figure was run on November 30, 2015.  
 Source: ISDH, ERC, DAT

Figure 15

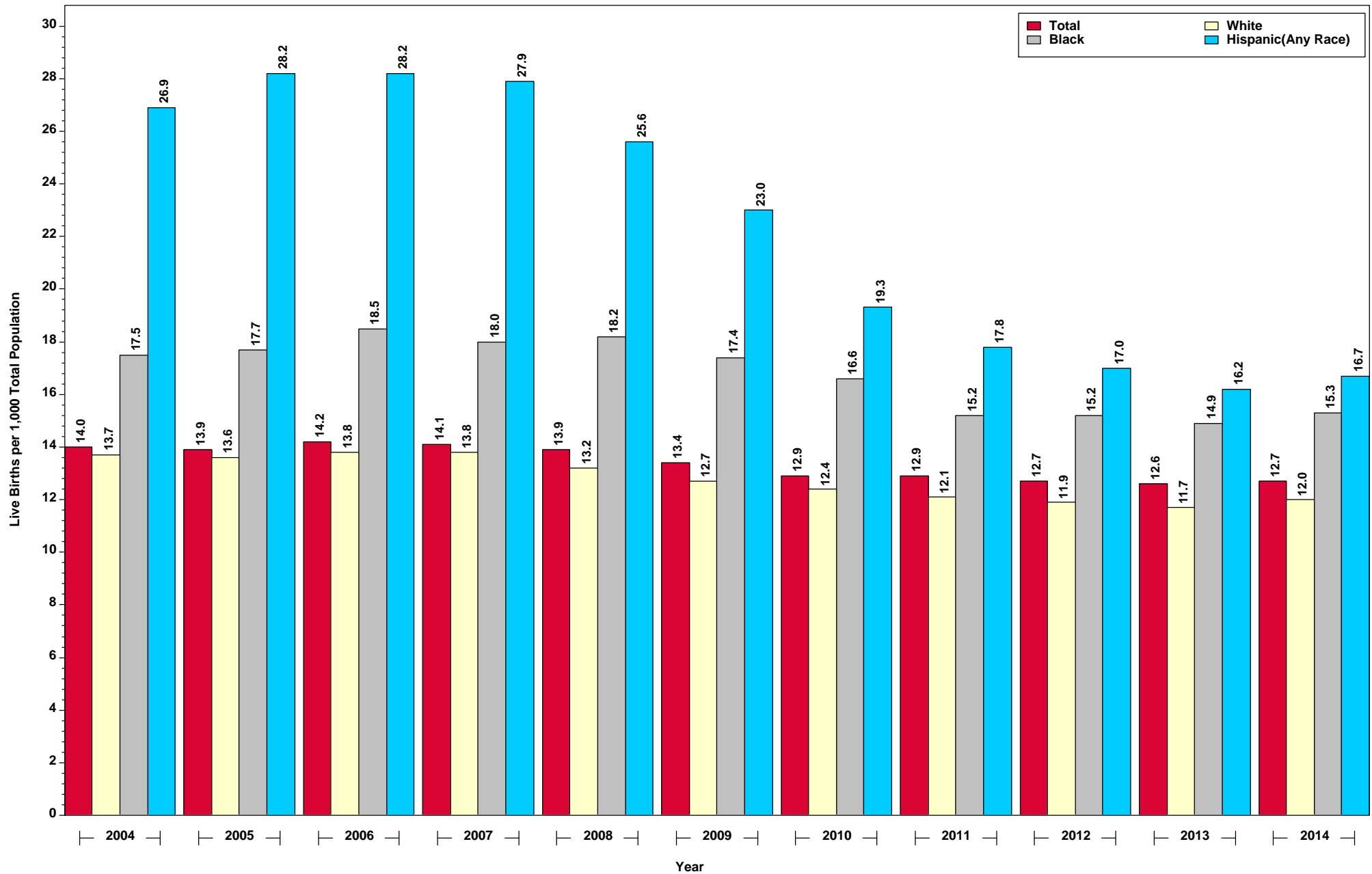
## Percent of Live Births to Unmarried Parents by Age and Race/Ethnicity of Mother: Indiana Residents, 2014



This figure was run on November 30, 2015.  
Source: ISDH, ERC, DAT; Table 25

Figure 16

### Crude Birth Rates by Year and Race/Ethnicity of Mother: Indiana Residents, 2004 to 2014

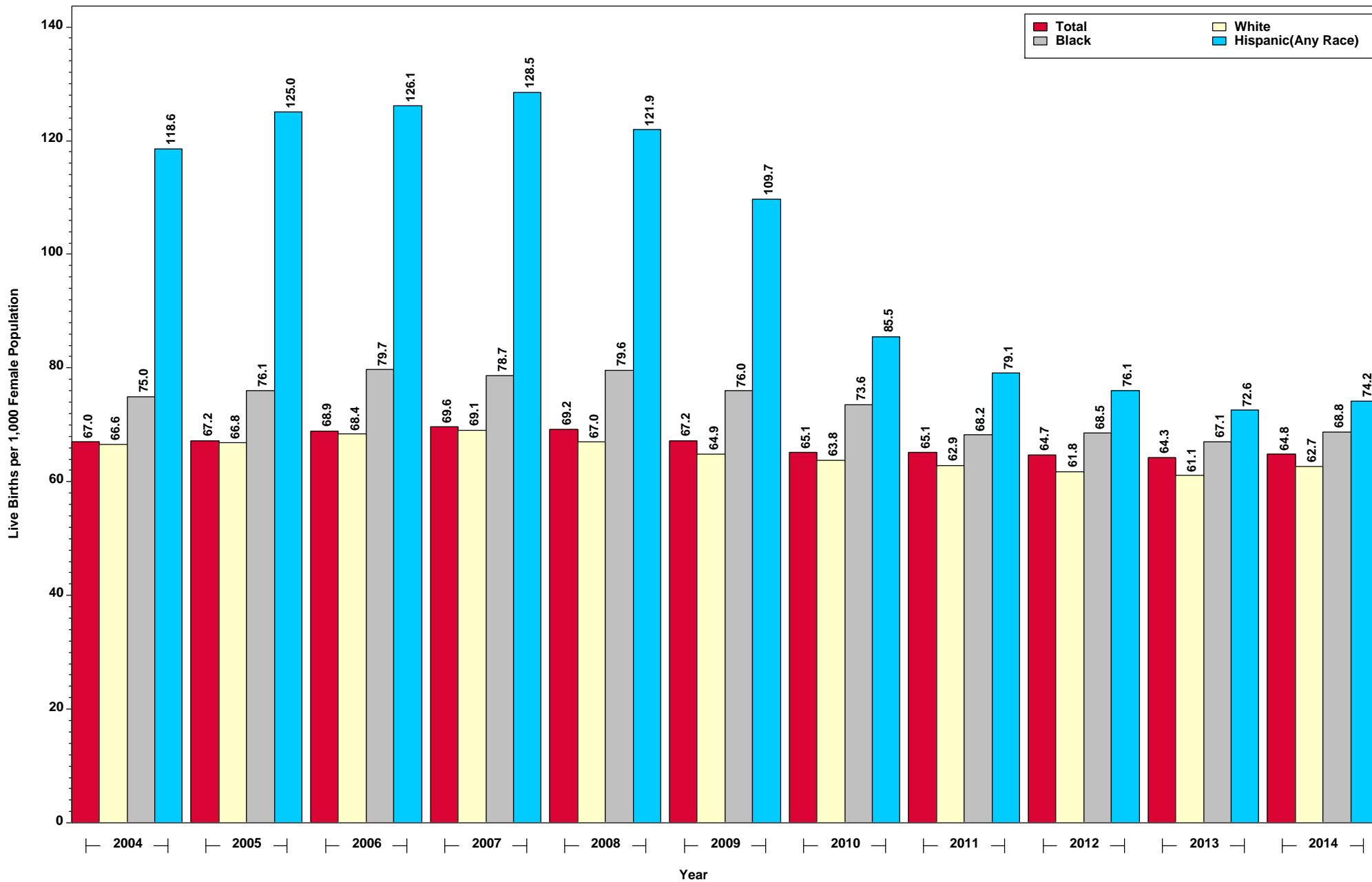


This figure was run on November 30, 2015.  
Source: ISDH, ERC, DAT; Table 28 (2014)



Figure 17

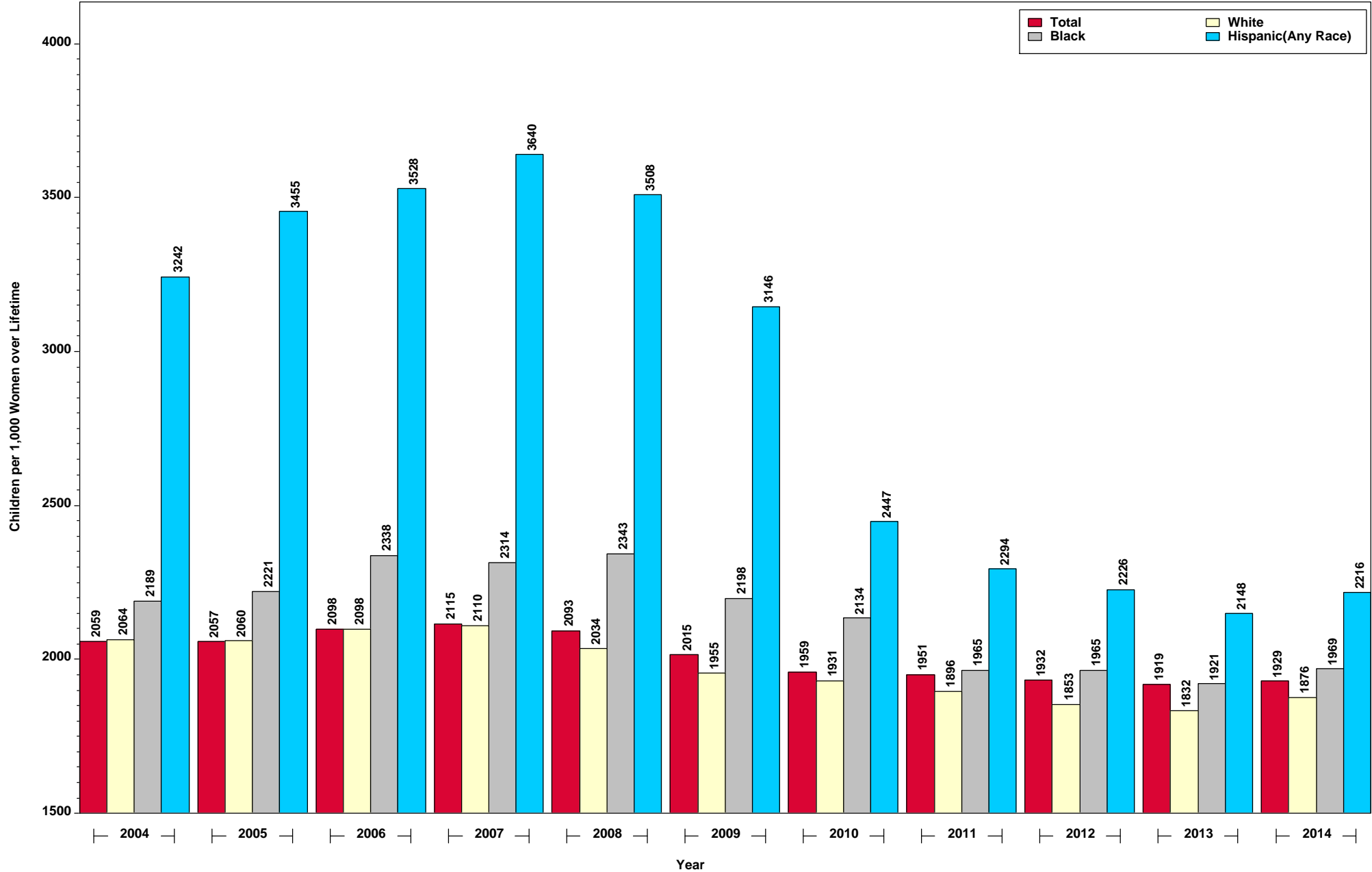
## General Fertility Rates by Year and Race/Ethnicity of Mother: Indiana Residents, 2004 to 2014



This figure was run on November 30, 2015.  
Source: ISDH, ERC, DAT; Table 13 (2014)

Figure 18

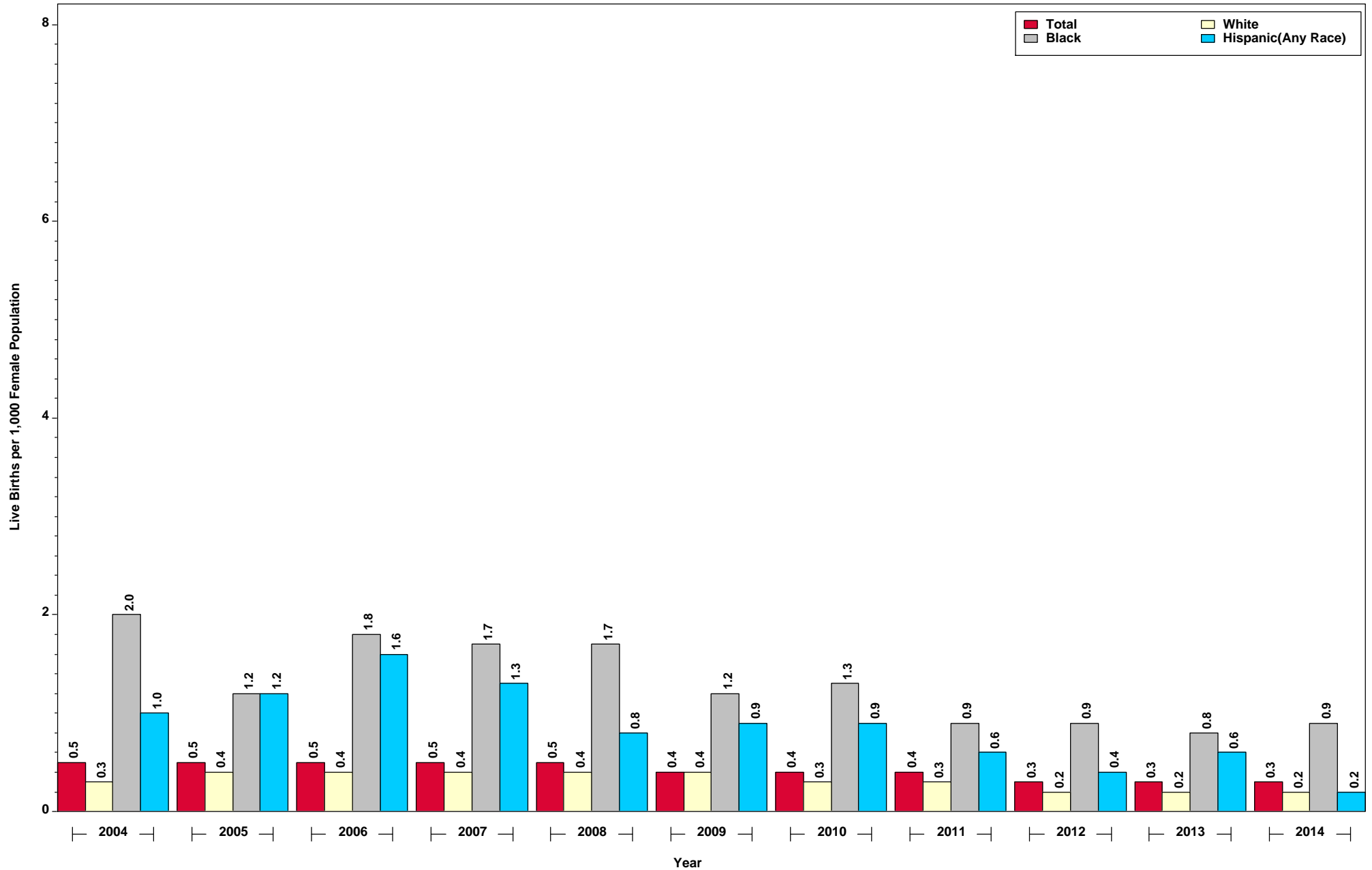
### Total Fertility Rates by Year and Race/Ethnicity of Mother: Indiana Residents, 2004 to 2014



This figure was run on November 30, 2015.  
Source: ISDH, ERC, DAT; Table 13 (2014)

Figure 19

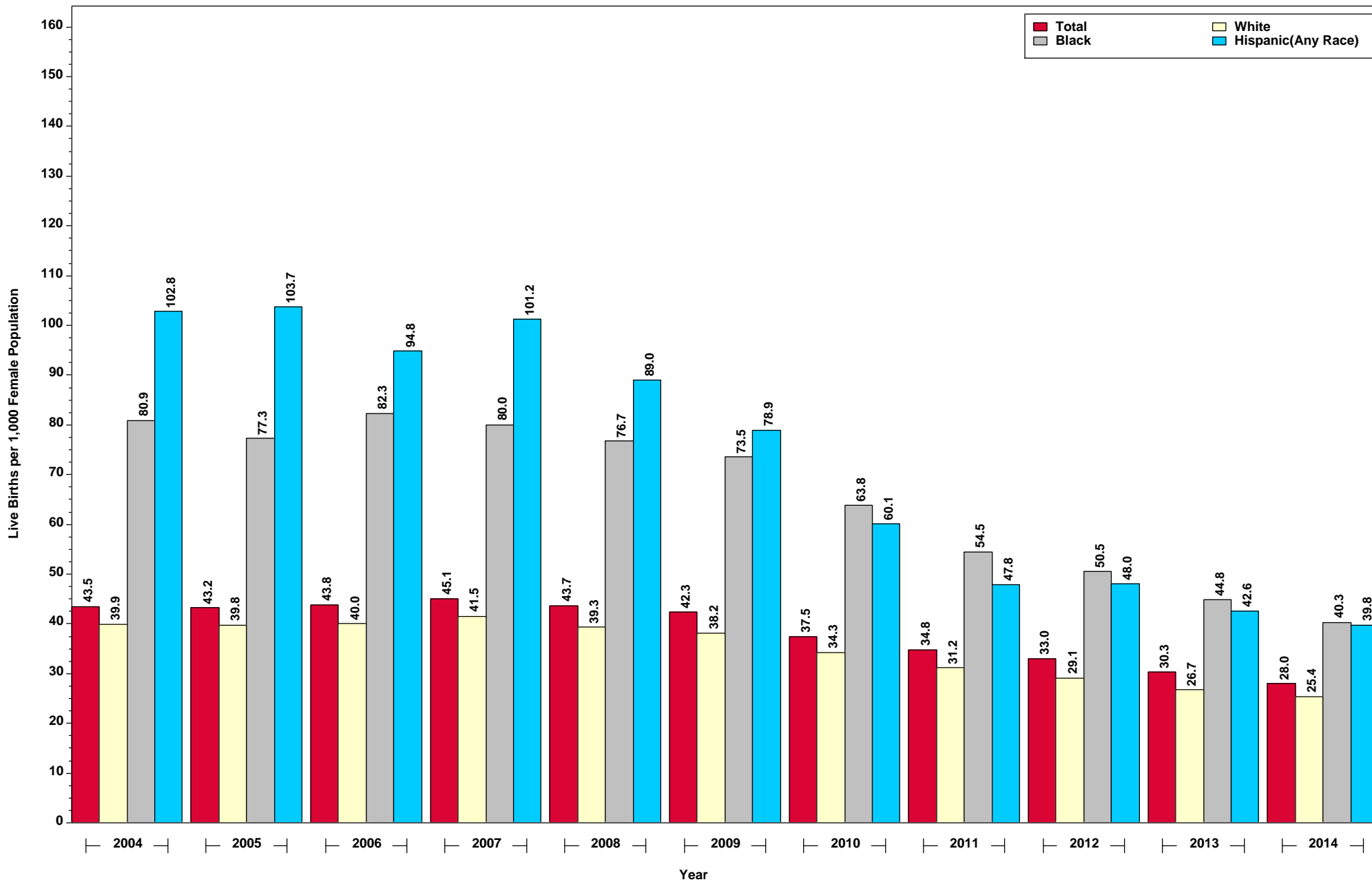
### Birth Rates for Ages Under 15 by Race/Ethnicity of Mother: Indiana Residents, 2004 to 2014



This figure was run on November 30, 2015.  
Source: ISDH, ERC, DAT; Table 13 (2014)

Figure 20

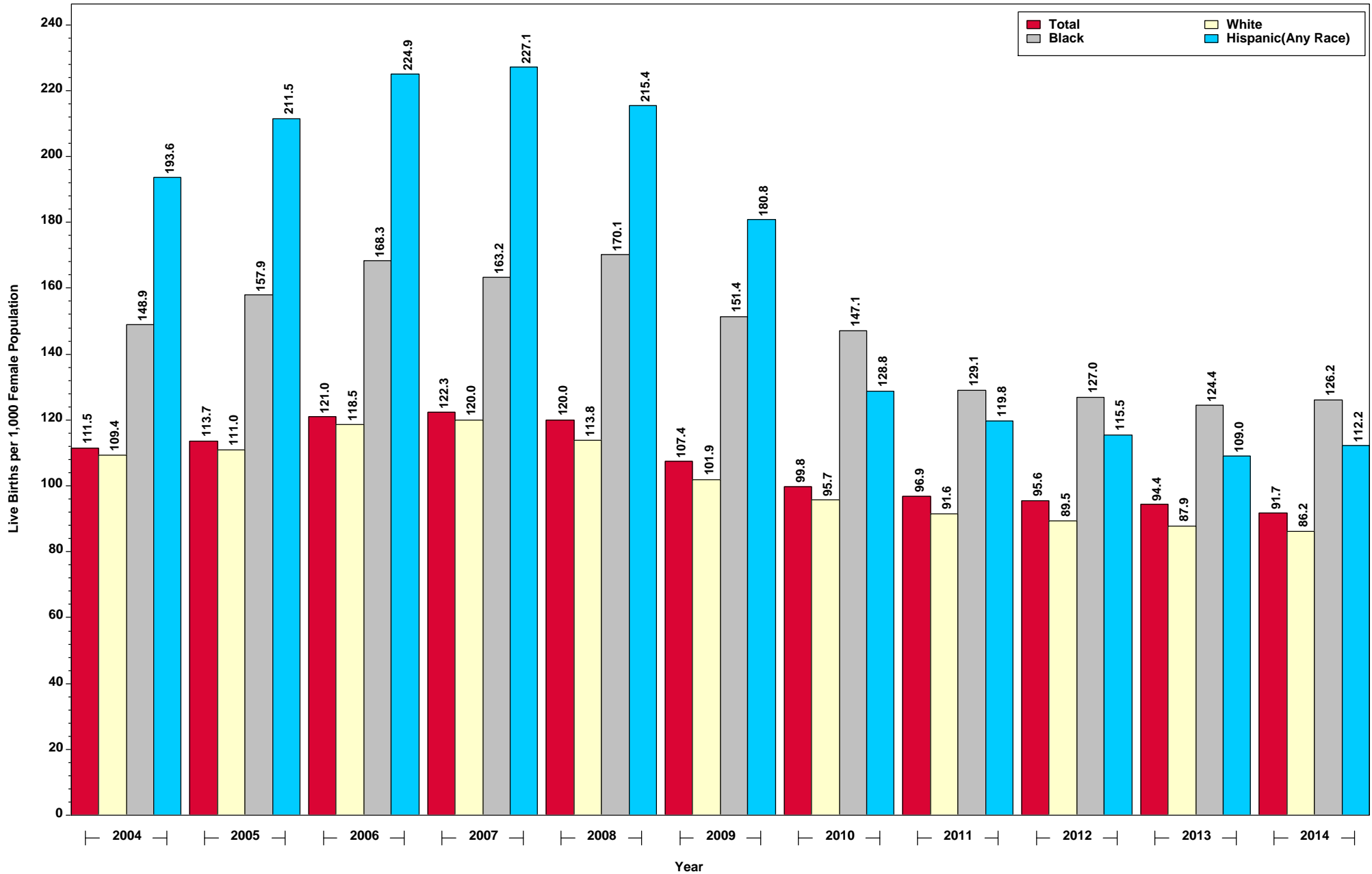
## Birth Rates for Ages 15 to 19 by Race/Ethnicity of Mother: Indiana Residents, 2004 to 2014



This figure was run on November 30, 2015.  
Source: ISDH, ERC, DAT; Table 13 (2014)

Figure 21

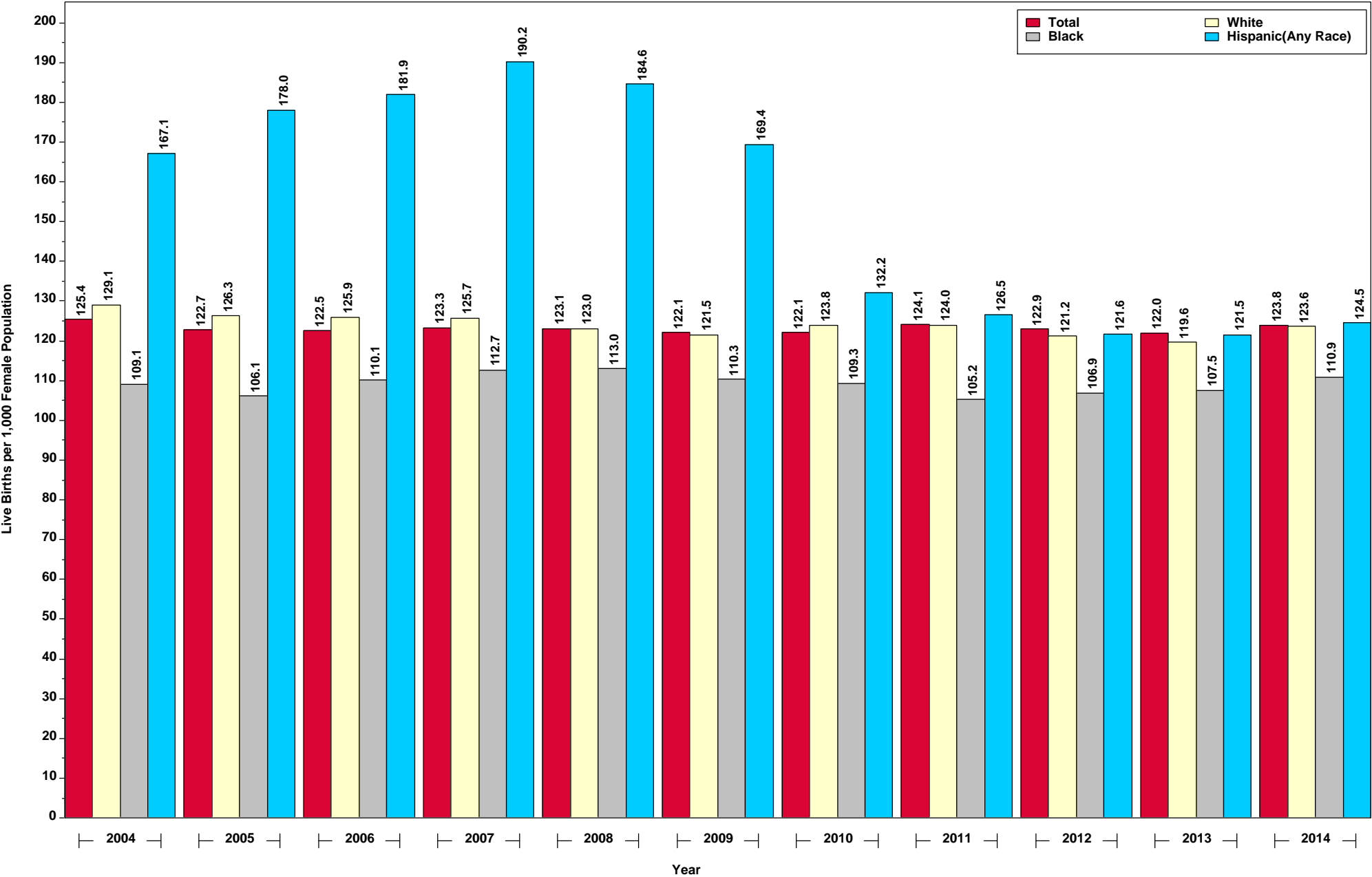
## Birth Rates for Ages 20 to 24 by Race/Ethnicity of Mother: Indiana Residents, 2004 to 2014



This figure was run on November 30, 2015.  
Source: ISDH, ERC, DAT; Table 13 (2014)

Figure 22

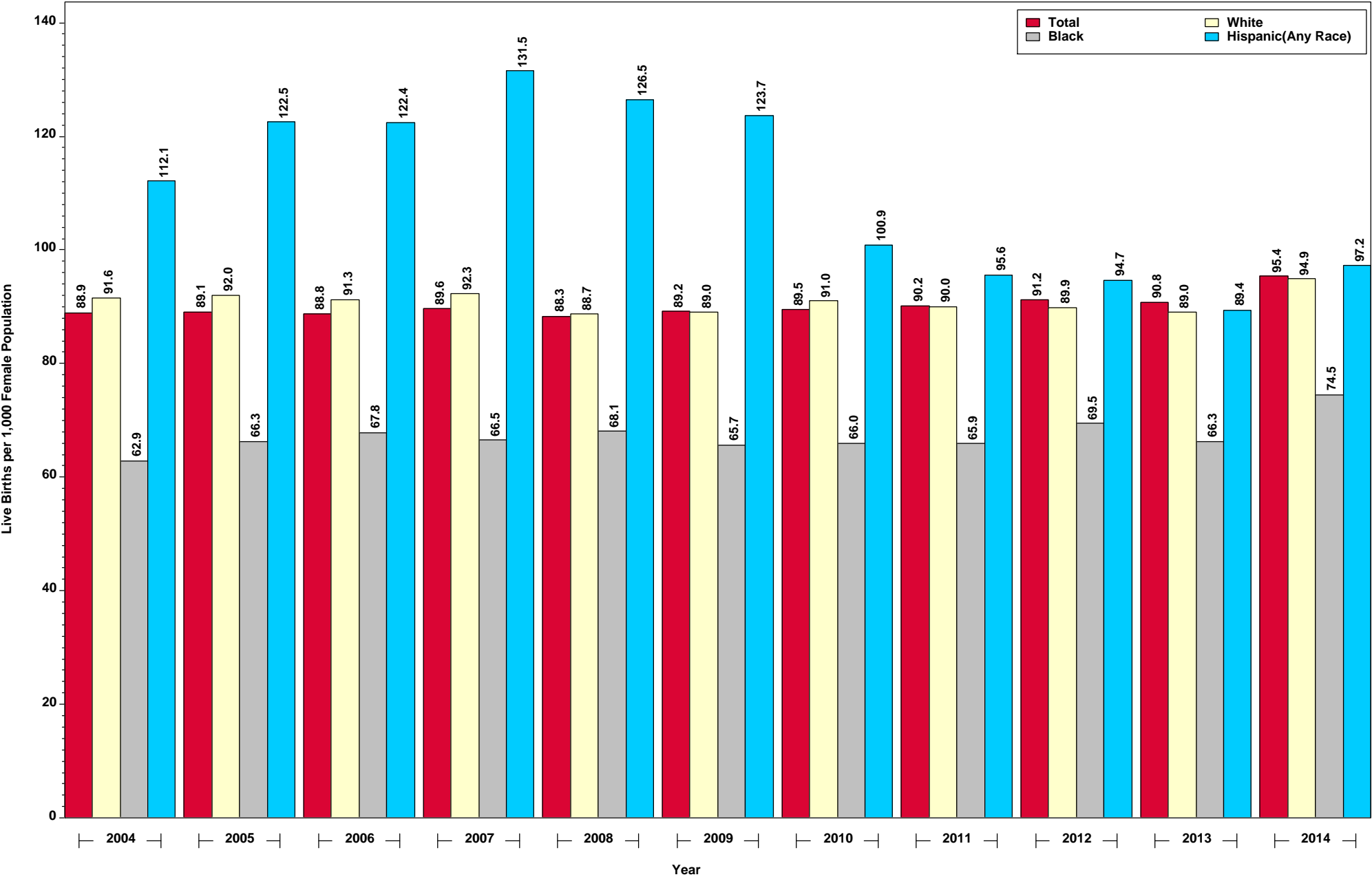
### Birth Rates for Ages 25 to 29 by Race/Ethnicity of Mother: Indiana Residents, 2004 to 2014



This figure was run on November 30, 2015.  
Source: ISDH, ERC, DAT; Table 13 (2014)

Figure 23

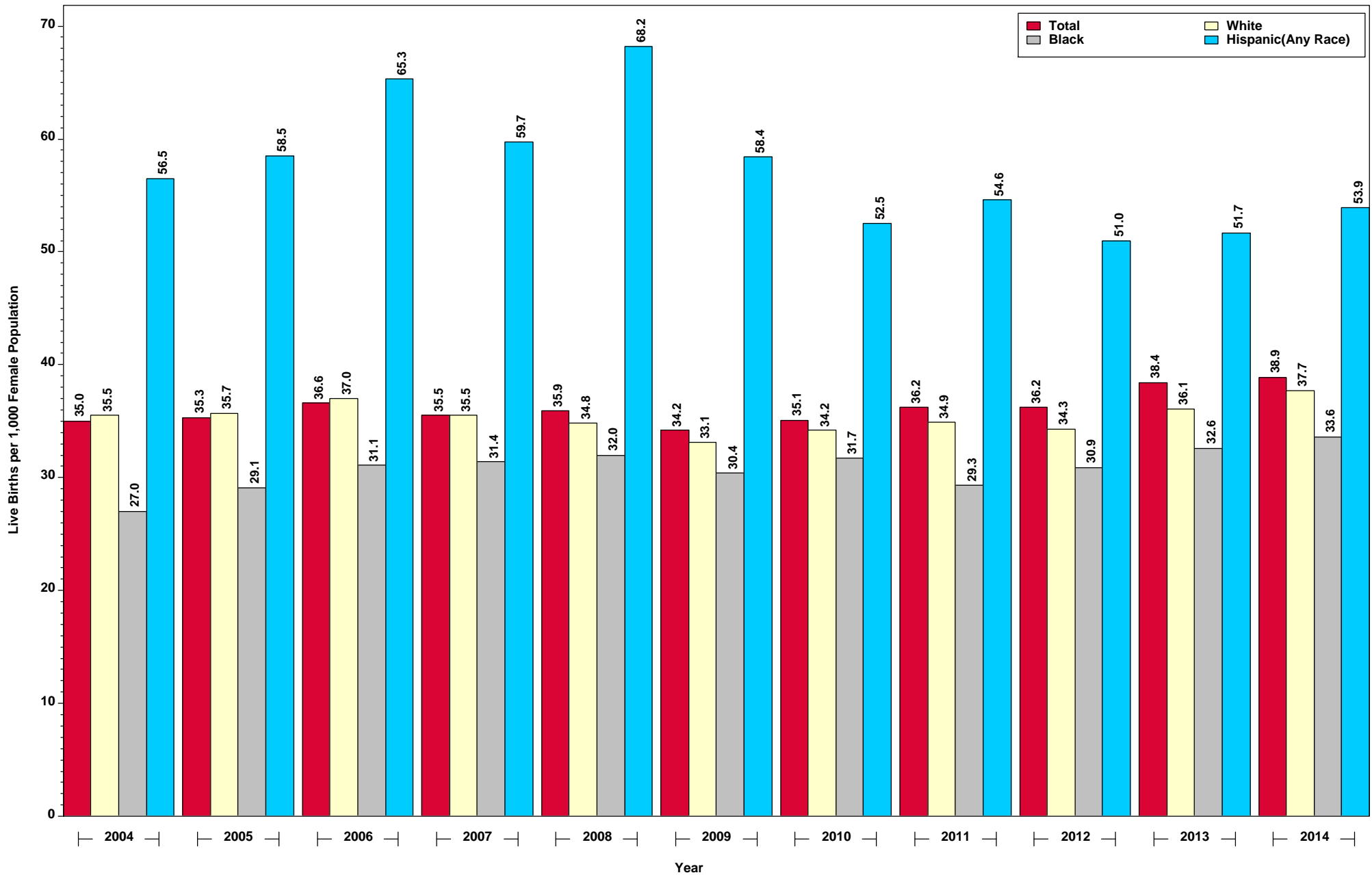
### Birth Rates for Ages 30 to 34 by Race/Ethnicity of Mother: Indiana Residents, 2004 to 2014



This figure was run on November 30, 2015.  
Source: ISDH, ERC, DAT; Table 13 (2014)

Figure 24

## Birth Rates for Ages 35 to 39 by Race/Ethnicity of Mother: Indiana Residents, 2004 to 2014

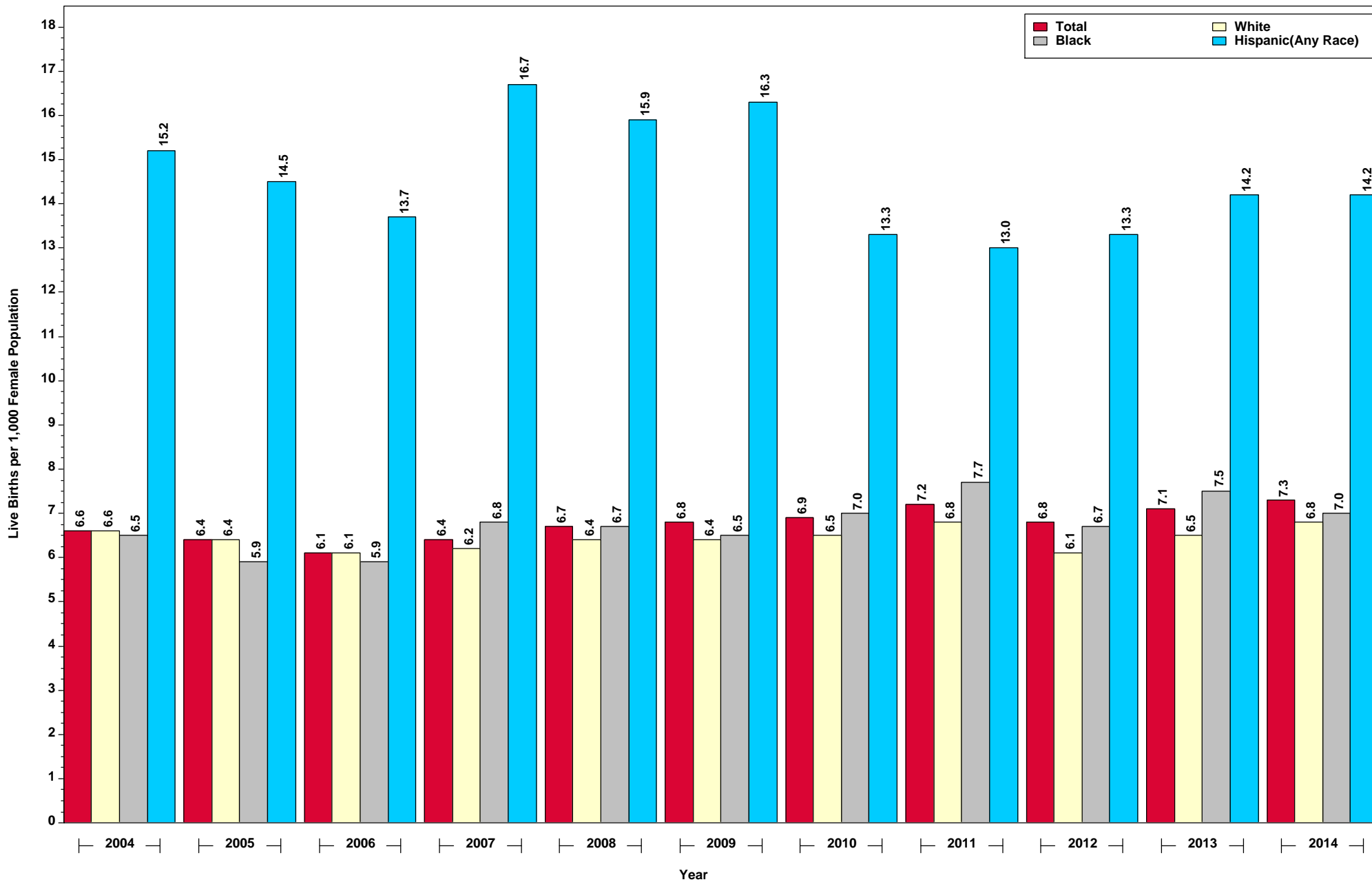


This figure was run on November 30, 2015.  
Source: ISDH, ERC, DAT; Table 13 (2014)



Figure 25

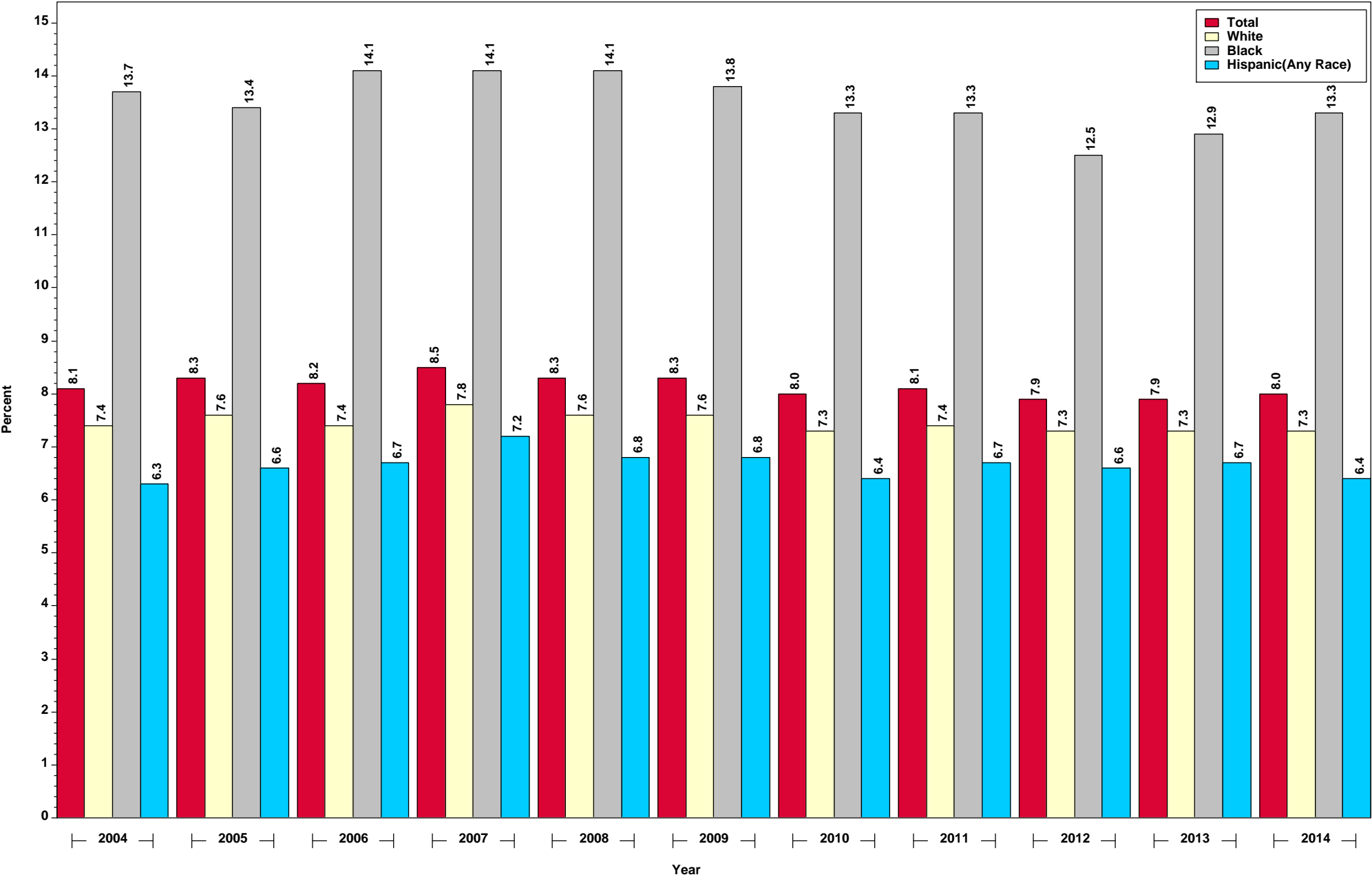
### Birth Rates for Ages 40 to 44 by Race/Ethnicity of Mother: Indiana Residents, 2004 to 2014



This figure was run on November 30, 2015.  
Source: ISDH, ERC, DAT; Table 13 (2014)

Figure 26

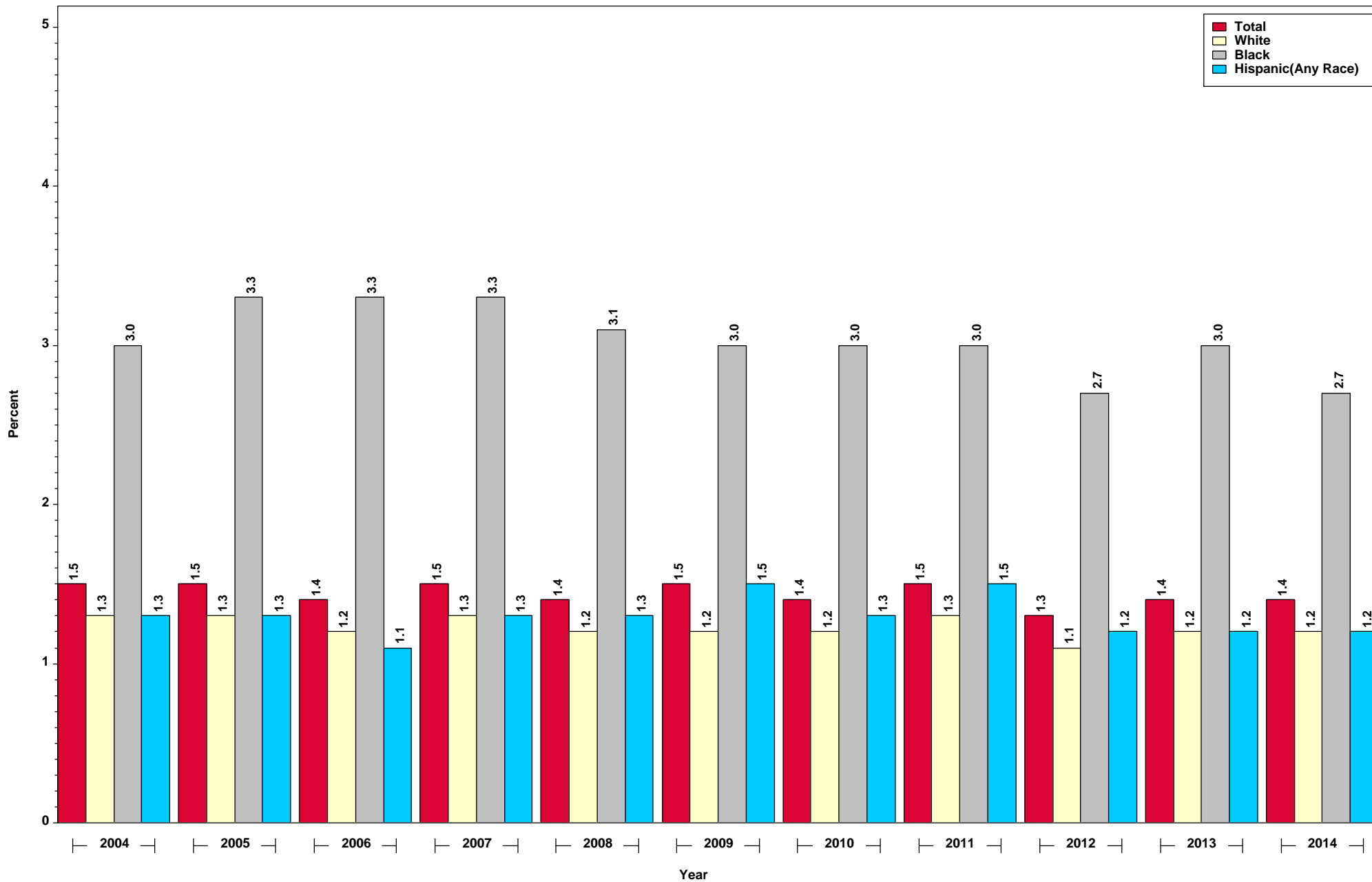
### Percent of Low Birthweight Infants by Year and Race/Ethnicity of Mother: Indiana Residents, 2004 to 2014



This figure was run on November 30, 2015.  
Source: ISDH, ERC, DAT; Table 5

Figure 27

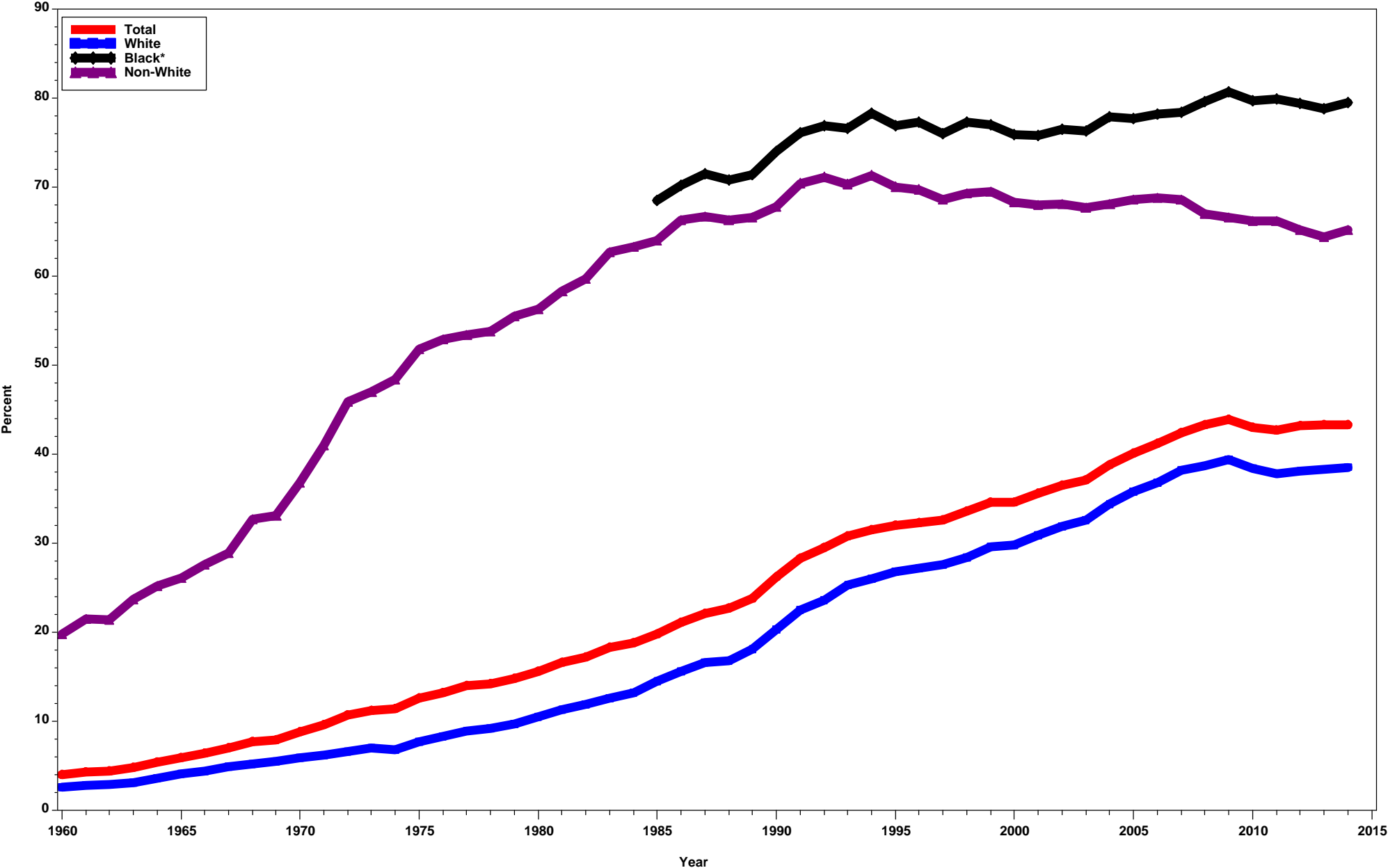
### Percent of Very Low Birthweight Infants by Year and Race/Ethnicity of Mother: Indiana Residents, 2004 to 2014



This figure was run on November 30, 2015.  
Source: ISDH, ERC, DAT; Table 6

Figure 28

### Percent of Live Births to Unmarried Parents by Race of Mother: Indiana Residents, 1960-2014



This figure was run on November 30, 2015.  
\*Information not available prior to 1985. These births were reported as non-white.  
Source: ISDH, ERC, DAT; Table 25