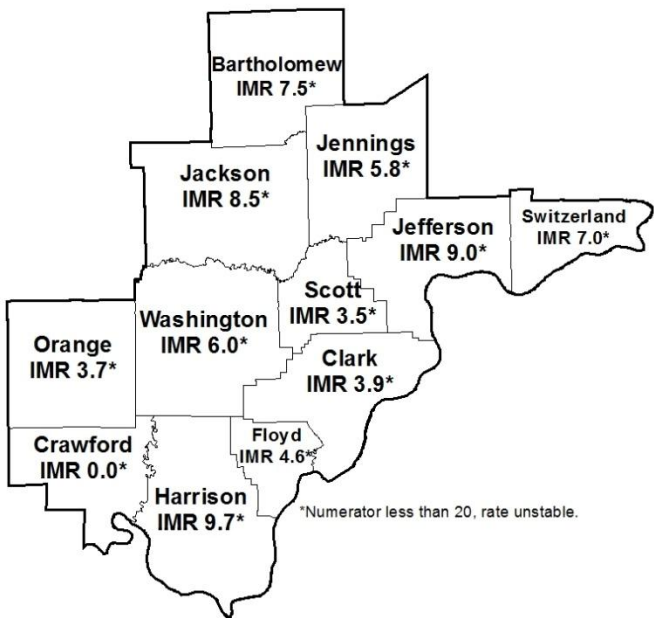


INFANT MORTALITY

Southern Hospital Region 2013

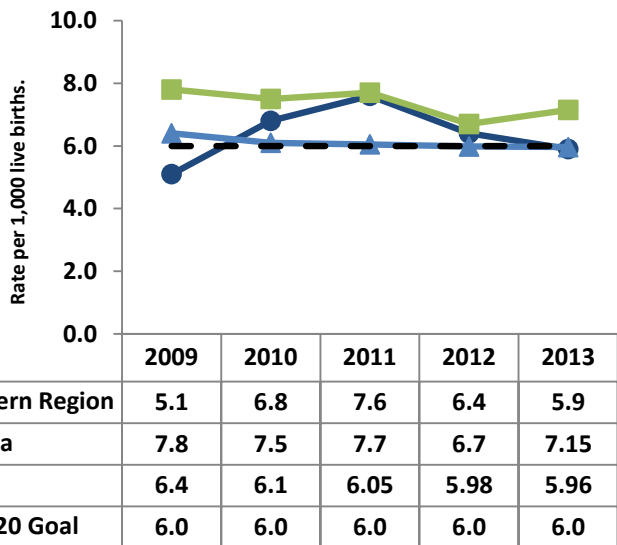
For more information on infant mortality in your area, please see the Indiana State Department of Health Mortality Report, Tables 2 and 8 (<http://www.in.gov/isdh/reports/mortality/2013/toc.htm>)



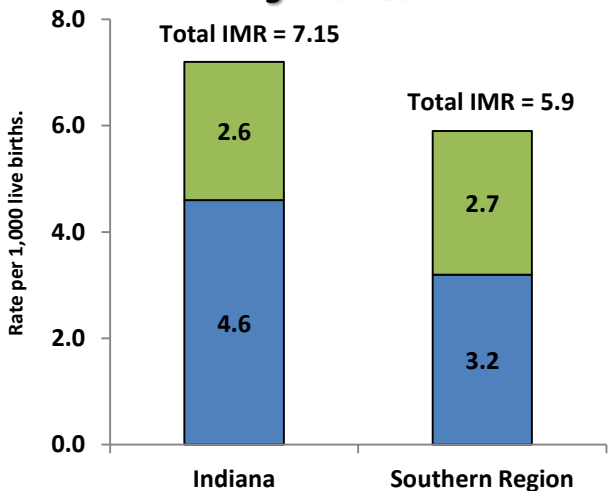
INFANT MORTALITY FACTS

- Infant mortality is defined as the death of a baby before his or her first birthday
- The infant mortality rate (IMR) is the number of babies who die in the first year of life, per 1,000 live births
- Of the 594 Indiana infant deaths in 2013, 37 occurred in the Southern Hospital Region
- Black infants are 2.6 times more likely to die than white infants in Indiana
- Neonatal Infant Death = 0 – 27 Days
- Post-Neonatal Infant Death = 28 – 364 Days

Infant Mortality Rates 2009 - 2013



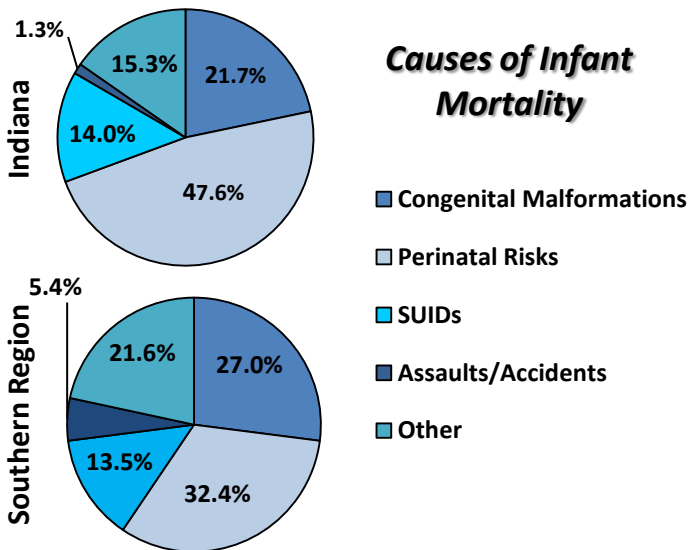
Infant Mortality Rates by Age at Death



PRACTICES TO REDUCE INFANT MORTALITY

- Improve overall health for women of child-bearing age
- Promote early & adequate prenatal care
- Decrease early elective deliveries before 39 weeks
- Decrease prenatal smoking & substance abuse
- Increase breastfeeding duration & exclusivity
- Support birth spacing & interconception wellness

Causes of Infant Mortality



BIRTH OUTCOME INDICATORS

Southern Hospital Region 2013

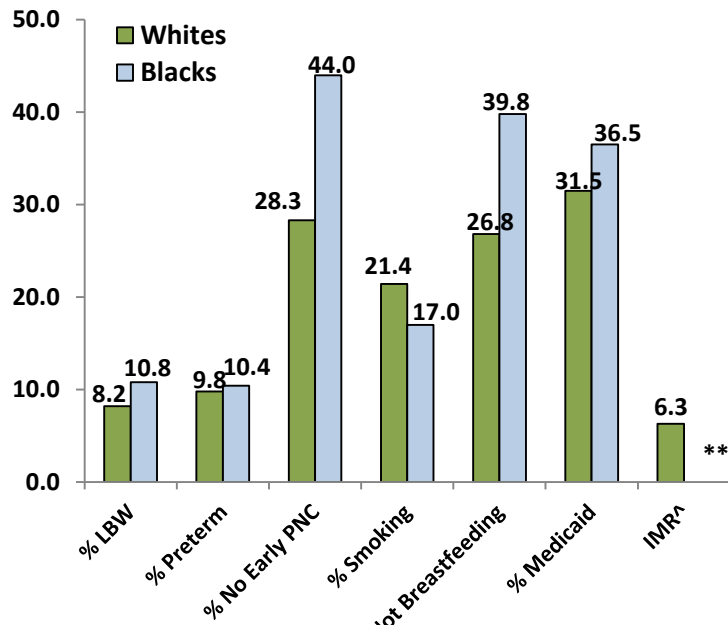
For more information on birth outcomes in your area, please see the Indiana State Department of Health Natality Report, Table 32 (<http://www.in.gov/isdh/reports/natality/2013/toc.htm>)

INDIANA QUICK FACTS

- Smoking rates among pregnant women are always one of the nation's worst
- Almost 1/3 of pregnant women do not receive early PNC
- Black women in Indiana are more likely to have a LBW or preterm baby & not get early PNC
- White women in Indiana are more likely to smoke during pregnancy

SOUTHERN REGION QUICK FACTS

- Higher percentage of LBW and preterm births compared to Indiana
- Higher percentage of women receiving PNC in the first trimester
- Higher percentage of women smoking during pregnancy
- Lower percentage of women breastfeeding at hospital discharge



^ = Rate per 1,000 live births

* Numerator less than 20, rate unstable.

** Numerator less than 5, rate suppressed.

LBW = Low Birthweight PNC = Prenatal Care IMR = Infant Mortality Rate

	% LBW (< 2,500 G)	% PRETERM (< 37 WKS GESTATION)	% NO EARLY PNC (1 ST TRIMESTER)	% SMOKING	% NOT BREASTFEEDING	% MOTHER ON MEDICAID
BARTHOLOMEW	6.8 13.9% Lower	7.5 21.9% Lower	31.9 2.4% Lower	17.6 12.1% Higher	22.0 3.1% Lower	33.1 24.9% Lower
CLARK	7.6 3.8% Lower	9.9 3.1% Higher	29.2 10.7% Lower	15.3 2.5% Lower	26.1 15.0% Higher	14.4 67.3% Lower
CRAWFORD	8.3*	10.2*	34.3 4.9% Higher	32.4 106.4% Higher	28.7 26.4% Higher	41.7 5.4% Lower
FLOYD	9.6 21.5% Higher	12.0 25.0% Higher	29.6 9.5% Lower	13.5 14.0% Lower	22.9 0.9% Higher	32.3 26.8% Lower
HARRISON	10.9 38.0% Higher	12.6 31.3% Higher	27.5 15.9% Lower	20.5 30.6% Higher	26.6 17.2% Higher	36.2 17.9% Lower
JACKSON	6.9 12.7% Lower	8.6 10.4% Lower	26.4 19.3% Lower	21.8 38.9% Higher	30.3 33.5% Higher	44.5 0.9% Higher
JEFFERSON	5.7*	8.4 12.5% Lower	21.5 34.3% Lower	25.4 61.8% Higher	29.0 27.8% Higher	39.7 10.0% Lower
JENNINGS	10.4 31.6% Higher	9.2 4.2% Lower	30.5 6.7% Lower	28.2 79.6% Higher	28.2 24.2% Higher	48.1 9.1% Higher
ORANGE	9.7 22.8% Higher	10.1 5.2% Higher	28.0 14.4% Lower	28.4 80.9% Higher	22.8 0.4% Higher	50.7 15.0% Higher
SCOTT	14.3 81.0% Higher	11.5 19.8% Higher	39.2 19.9% Higher	32.5 107.0% Higher	49.0 115.9% Higher	43.0 2.5% Lower
SWITZERLAND	7.7*	9.9*	33.8 3.4% Higher	27.5 75.2% Higher	30.3 33.5% Higher	43.0 2.5% Lower
WASHINGTON	5.1*	7.9 17.7% Lower	33.5 2.4% Higher	21.8 38.9% Higher	24.5 7.9% Higher	36.3 17.7% Lower
SOUTHERN REGION	8.2 3.8% Higher	9.7 1.0% Higher	29.8 8.9% Lower	19.9 26.8% Higher	26.6 17.2% Higher	32.6 26.1% Lower
INDIANA	7.9	9.6	32.7	15.7	22.7	44.1

* = Unstable rate due to fewer than 20 birth outcomes.

• Bottom number is percent difference from State.