

# INDIANA LABORATORY SYSTEM MONTHLY PARTNER WEBCAST

Thank you for joining us.  
The webcast will begin shortly.

7/10/2025





**Indiana**  
**Department**  
**of**  
**Health**

# INDIANA LABORATORY SYSTEM MONTHLY PARTNER WEBCAST

**MARK GLAZIER**  
DEPUTY LABORATORY DIRECTOR

7/10/2025

# Agenda

---

1. **Welcome and laboratory updates** – Mark Glazier, deputy laboratory director
2. **April 2025 Measles Cases** – Chris Tarrand, Field Epidemiology director
3. **STAT courier/clinical shipping updates** – Brian Pope, Virology and Biological Preparedness Division director
4. **Serology lab updates** – Lauren Franco, PhD, Clinical Microbiology Division director
5. **Q & A** – IDOHL webcast team



# Updates and reminders



**Indiana**  
Department  
of  
**Health**

# IDOH Laboratory

Four ways to stay in the know:

1. Email us at [IDOH-Lab-Info@health.in.gov](mailto:IDOH-Lab-Info@health.in.gov)
2. Sign up for IHAN – Indiana Health Alert Network  
<https://ihan-in.org/>
3. [Sign up](#) for laboratory communications and updates
4. Update your laboratory's contact information [here](#)



# APHL Infectious Diseases Webinars

---

The Association of Public Health Laboratories (APHL) is excited to announce its upcoming infectious diseases webinar lineup. P.A.C.E.® credits will be offered for the webinars (most are eligible for one contact hour).

## **Back with a Vengeance: Laboratory Readiness for Detection of the Re-Emerging New World Screwworm**

July 30, 3 p.m. ET

[Registration](#) | [Course Flyer](#)

## **Tiny Midges, Big Trouble: Building Diagnostic Capacity For Oropouche Virus**

Aug. 26, 3 p.m. ET

[Registration](#) | [Course Flyer](#)

## **Tough Skin, Tougher Fungi: Emerging Resistant Dermatophytes**

Sept. 30, 2 p.m. ET

[Registration](#) | [Course Flyer](#)

# Sentinel Level Clinical Laboratory Guideline Update

---

APHL continues to collaborate with the American Society for Microbiology (ASM) to review and update the Sentinel Level Clinical Laboratory Guidelines. Please visit ASM's website to view the most recent updated guideline, **Brucellosis-Causing *Brucella* Species (BBS)**. [Brucellosis-Causing \*Brucella\* Species \(BBS\) | ASM.org](https://www.asmmicrobiology.org/brucellosis-causing-brucella-species-bbs).

## Summary of Major Changes:

- Background updated with recent taxonomic changes to genus *Brucella* and further defined clinically significant *Brucella* species.
- Emphasis for sentinel level laboratories is shifted from performing presumptive identification to rule-out of previous select agent *Brucella* spp, now referred to as Brucellosis-causing *Brucella* species (BBS).
- Case definition of brucellosis updated to reflect the 2025 CSTE Case Definition.
- Additional specifications added to specimen collection information, including discontinuation of Isolator lysis-centrifugation system.
- Recognition of gram-variable staining of *Brucella* spp.
- As of Dec. 17th, 2024, *Brucella* was removed as a select agent. Guidance updated on biosecurity and other public health requirements for rule-out BBS cases after removal of BBS as select agent.

# 2025 ILS webcast updates

---

- ILS webcasts will be held from 10:30-11 a.m. ET on the second **Thursday** each month
- Webcasts will require registration via the links provided:
  - August 14 – [August ILS Webcast Registration Link](#)
  - Sept. 11 – [September ILS Webcast Registration Link](#)
- Recordings will be sent to the email provided during registration following the conclusion of the webcast





**Indiana**  
**Department**  
**of**  
**Health**

# APRIL 2025 MEASLES CASES IN INDIANA

**CHRIS TARRAND**

FIELD EPIDEMIOLOGY DIRECTOR

7/10/2025

# April 2025 Measles Cases in Indiana

---

- The Indiana Department of Health (IDOH) confirmed 8 cases of measles in Indiana in April 2025
- That outbreak was officially over as of 5/28/2025
- No broad zero dose recommendations
- All eight cases are connected to each other but at this time there are no known links to [outbreaks in other states](#).
- Over 300+ associated healthcare exposures
- Nearby school exposure

# Notification and Reporting

---

- Measles should be reported to IDOH **immediately upon suspicion**
  - This means, once measles hits your differential, you should be calling
  - This is required of physicians, hospitals, and labs
- Authorization is **required** for measles testing at IDOHL:
  - Consultation with an epidemiologist available 24/7
    - Business and after-hours: 317-233-1325

# Measles Testing Facilitation

---

- Authorization is required for all specimens at IDOHL even in outbreak scenarios
  - Information challenges
  - Ensures appropriate testing
  - Supply constrains
- All calls routed to single triage line
- MMR vaccination and measles PCR
- Reference lab road bumps highlight importance of risk assessment

# Public Health Response

---

- Risk assessment of the situation is a constant conversation, especially in the early stages
- During an investigation, IDOH will recommend a 21-day quarantine for exposed contacts without proof of immunity
  - Post Exposure-Prophylaxis(PEP) a viable option for close contacts of confirmed case, but short time window creates challenges
- Susceptible contacts may receive the MMR/MMRV vaccine within 72 hours of exposure, or IG within 6 days of exposure if eligible
- IDOH will notify local health departments of a confirmed case so that they can notify partners to remain vigilant for patients presenting with compatible symptoms or relevant exposure

# Response development

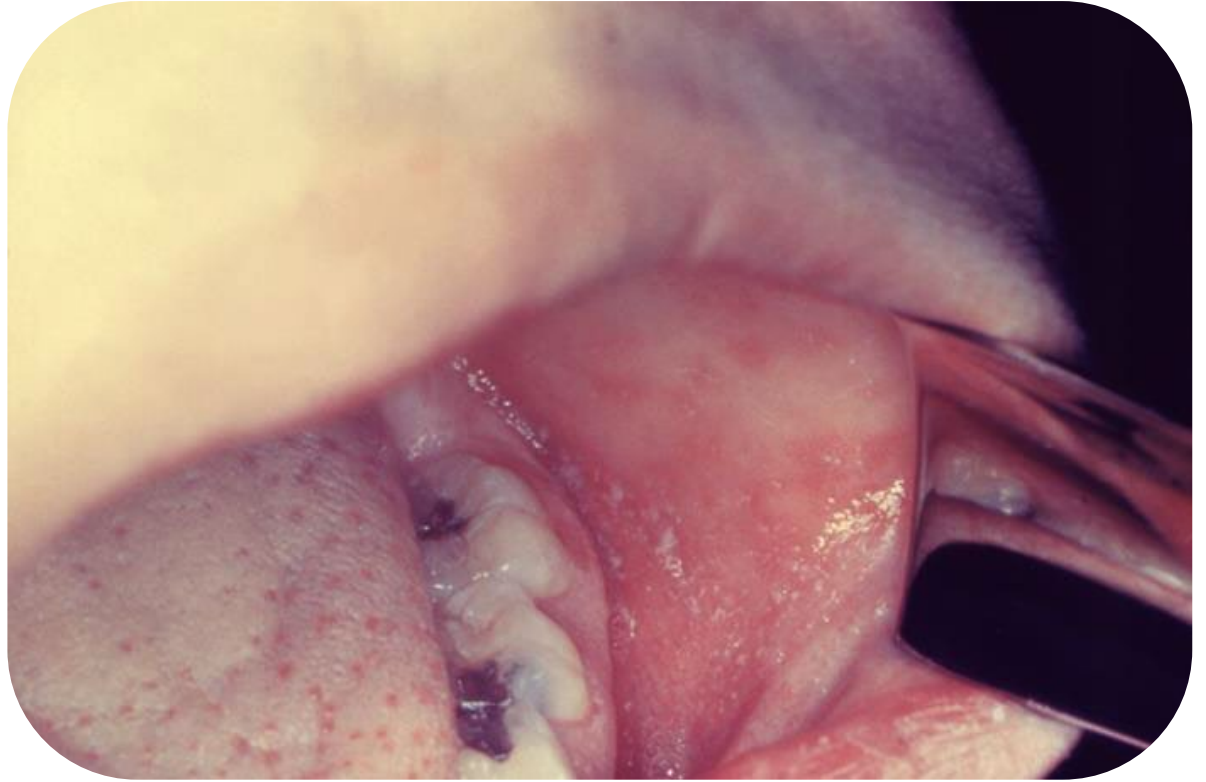
---

- Secondary cases
- Local stakeholder expansion
- Press releases
- Hospital communications
- Increased vigilance periods
- Dashboard development

# Screening Questions We Need for Suspect Measles Cases

---

- Rash description and where did the rash start?
- Other symptoms:  
Cough, coryza, conjunctivitis, fever, kolpik spots
- Onset dates of symptoms
- Vaccination history
- School/organizational affiliation
- What else is on the differential?
- Travel and exposure history, recent MMR vaccination, recent antibiotic usage



Source: CDC Public Health Image Library



**Indiana**  
**Department**  
**of**  
**Health**

# IDOH STAT COURIER AND CLINICAL SHIPPING UPDATE

**BRIAN POPE**

VIROLOGY & BIOLOGICAL PREPAREDNESS  
DIVISION DIRECTOR

7/10/2025



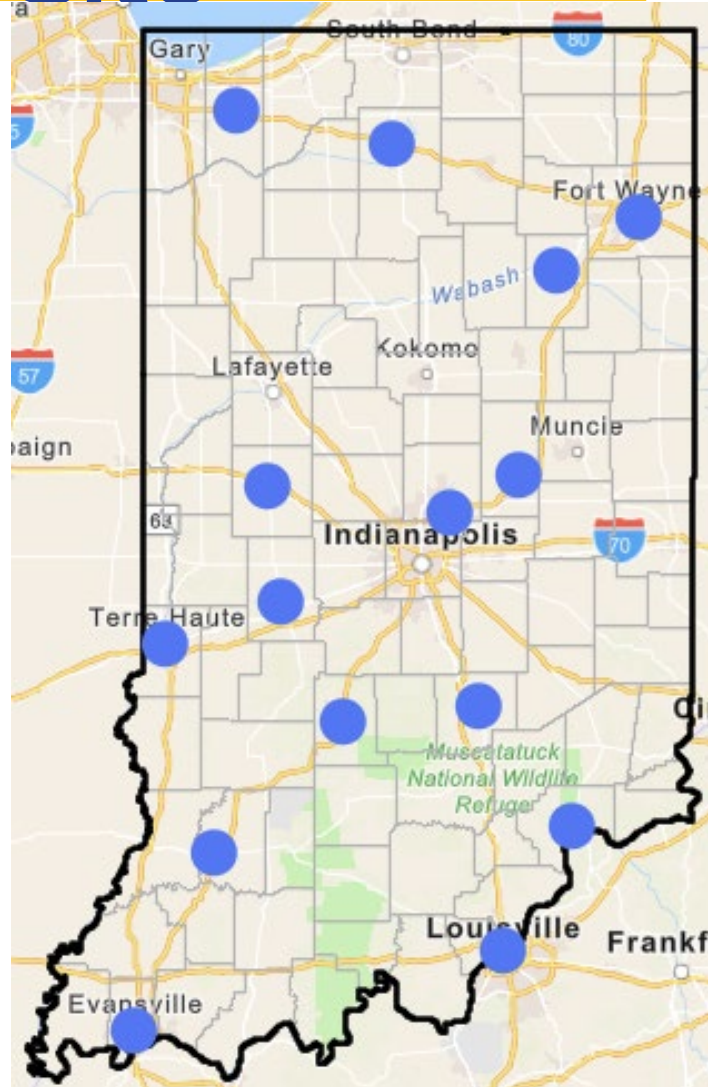
# Submitting Packages to the IDOHL via Regional Courier Site

Sites who accept specimens from sites within and outside of their county are known as Regional Courier Sites.

The most up to date list can be found at the following link:

<https://www.in.gov/health/laboratories/new!-indiana-courier-system/>

Clicking on an individual blue dot will pull up the site's available hours, address and phone number. We encourage submitters to call sites prior to dropping off specimens to ensure there are no issues.



## Example:

Bartholomew County Health Department

2625 Foxpointe Drive  
Columbus, IN 47203

Phone: 812-379-1555, Fax: 812-379-1559

### Drop Off Hours:

- Monday: 8:00am-5:00pm
- Tuesday: 8:00am-5:00pm
- Wednesday: 8:00am-5:00pm
- Thursday: 8:00am-5:00pm
- Friday: 8:00am-5:00pm

### After-hours Drop Off? No

**Drop Off Instructions:** Please drop off specimens before 4:45pm. Enter main entrance and ask to speak to a nurse regarding specimen drop off and to make sure paperwork completed.

### Primary Point of Contact:

Can call 812-379-1555 option 1 and ask for a public health nurse

E-mail:

Office: 812-379-1555 Option 1 and ask to speak to a public health nurse, Mobile:

# NEW Clinical Shipping Requirements

---

The sample timing and temperature requirements are on the IDOHL website:

<https://www.in.gov/health/laboratories/testing/>

Options for shipping samples to IDOHL:

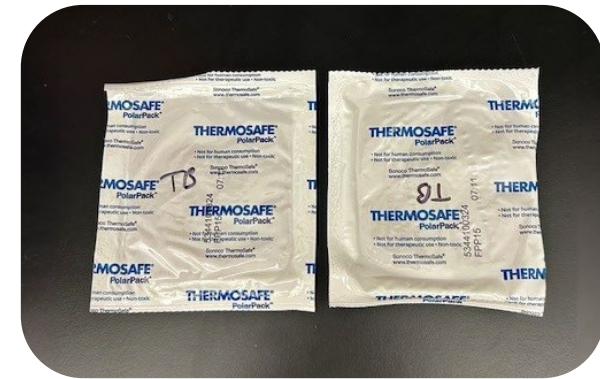
**Use STAT Courier, no matter the temperature**

- <https://www.in.gov/health/laboratories/new!-indiana-courier-system/>

# Refrigerated samples without using STAT Courier in accepted shipper

Refrigerated samples (2-8°C) - Use the following shipping container with **two** of the specific ice packs listed.

If the container is received at the IDOHL within 24 hours of shipping, the temperature will be deemed automatically acceptable.



# Refrigerated samples without using STAT Courier in accepted shipper

A shipping container that matches VWR item 15713-700  
(Multi-purpose dome style foam container assembled in corrugated carton)

- Interior dimensions: 8L×5⅞W×4¼"H
- Exterior dimensions: 11L×9W×7¼"H
- Thickness = 1.5"



# Refrigerated samples without using STAT Courier in accepted shipper

Use **two** frozen ice packs in the shipping container above that match VWR item 89049-980

- External Dimensions:  
11.4×10.1×3.8 cm (4½×4×1½")
- Weight: 425 g (15 oz.)
- Interior dimensions: 8L×5⅞W×4¼"H
- Foam Brick



# Refrigerated samples without using STAT Courier in another shipper

---

Any other method/mode of shipping will require IDOHL personnel to check the temperature of the sample/package upon receipt and reject any samples that are outside of the published requirements (<https://www.in.gov/health/laboratories/testing/>).

# Questions on clinical shipping requirements?

Please contact the IDOHL  
[ido-h-lab-info@health.in.gov](mailto:ido-h-lab-info@health.in.gov)

317-921-5500





# Questions?

**Brian Pope**

Director, Virology &  
Biological Preparedness

(317) 921-5555

[bpope1@health.in.gov](mailto:bpope1@health.in.gov)







**Indiana**  
**Department**  
**of**  
**Health**

# IDOHL SEROLOGY LABORATORY SECTION UPDATES

**Lauren Franco, PhD**

Clinical Microbiology Division Director

07/10/2025

# Serology Lab Updates


---

- Collection method guidance for chlamydia and gonorrhea testing
- Test menu changes
- Shipping guidance to meet temperature requirements

# Chlamydia and Gonorrhea Collection Method Guidance

Acceptable specimens and collection methods:

- Patient-collected: urine, vaginal swabs
- Clinician-collected: **rectal swabs**, endocervical swabs, male urethral swabs

Specimen Information	
*Collection Date: <input type="text"/> 	Specimen Condition: <input checked="" type="radio"/> None <input type="radio"/> Refrigerated <input type="radio"/> Frozen
*Specimen Collection Method: <input checked="" type="radio"/> Patient-collected <input type="radio"/> Clinician-collected	
*Source of Specimen: <input type="radio"/> Cervix <input type="radio"/> Penile Urethra <input type="radio"/> Urine <input type="radio"/> Rectal <input type="radio"/> Vaginal	*Reason for Test: <input type="checkbox"/> Priority Age <input type="checkbox"/> Positive ct/gc past 6 months <input type="checkbox"/> Symptomatic <input type="checkbox"/> Test of Cure <input type="checkbox"/> Contact to Known Case <input type="checkbox"/> MSM <input type="checkbox"/> Anal Risk <input type="checkbox"/> HIV positive <input type="checkbox"/> Prenatal <input type="checkbox"/> PrEP <input type="checkbox"/> Submitter-funded testing

# Chlamydia and Gonorrhea Collection Method Guidance

HOLOGIC®

Aptima®

## Instructions for Using the Aptima® Multitest Swab Specimen Collection Kit for Patient-Collected Specimens

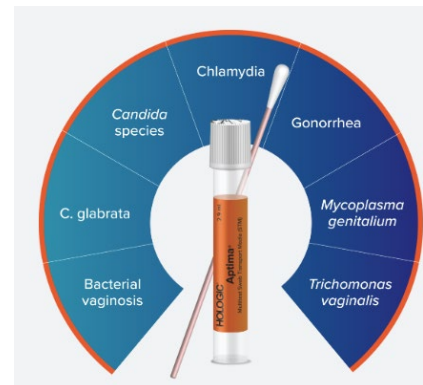
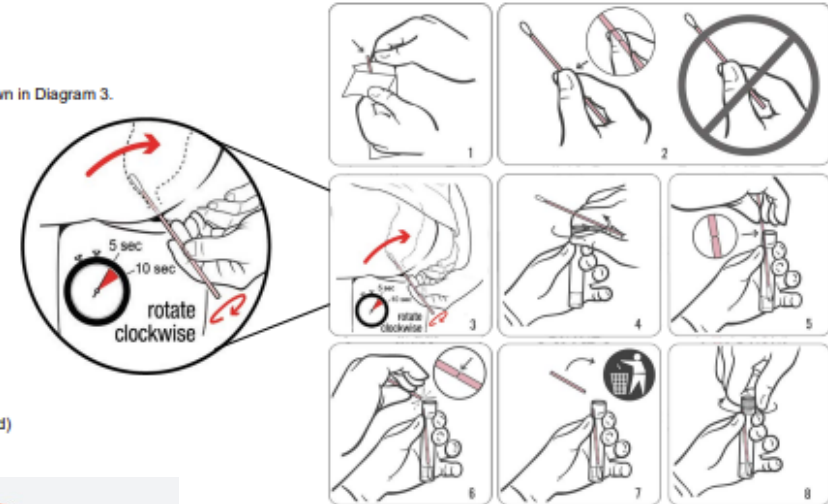
### RECTAL SWAB SPECIMEN COLLECTION

1. **Before proceeding, read the patient information and general instructions on page 1.**
2. Partially peel open the swab package as shown in Diagram 1. Remove the swab.  
*Do not touch the soft tip or lay the swab down.*  
*If the soft tip is touched, the swab is laid down, or the swab is dropped, request a new Aptima Multitest Swab Specimen Collection Kit.*
3. Hold the swab as shown in Diagram 2, placing your thumb and forefinger in the middle of the swab shaft covering the score line. Do not hold the swab shaft below the score line.
4. Carefully insert the swab into your rectum about 1-2 inches (3-5 cm) past the anal margin (the outside of the anus) and **gently rotate the swab clockwise** for 5 to 10 seconds as shown in Diagram 3. Withdraw the swab without touching your skin.
5. While holding the swab in the same hand, unscrew the cap from the tube as shown in Diagram 4. Do not spill the contents of the tube.  
*If the contents of the tube are spilled, use a new Aptima Multitest Swab Specimen Collection Kit.*
6. Immediately place the swab into the transport tube so that the score line is at the top of the tube as shown in Diagram 5.
7. Carefully break the swab shaft at the score line against the side of the tube as shown in Diagram 6.
8. Immediately discard the top portion of the swab shaft as shown in Diagram 7.
9. Tightly screw the cap onto the tube as shown in Diagram 8. Return the tube as instructed by your health-care provider.

### THROAT SWAB SPECIMEN COLLECTION

1. **Before proceeding, read the patient information and general instructions on page 1.**
2. Partially peel open the swab package as shown in Diagram 1. Remove the swab.  
*Do not touch the soft tip or lay the swab down.*  
*If the soft tip is touched, the swab is laid down, or the swab is dropped, request a new Aptima Multitest Swab Specimen Collection Kit.*
3. Hold the swab as shown in Diagram 2, placing your thumb and forefinger in the middle of the swab shaft covering the score line. Do not hold the swab shaft below the score line.
4. Carefully insert the swab into your mouth as shown in Diagram 3, ensuring contact with bilateral tonsils (the tonsils on both sides of your mouth, unless your tonsils have been removed) and the back of your throat, then withdraw the swab without touching the inside of your cheeks or tongue.
5. While holding the swab in the same hand, unscrew the cap from the tube as shown in Diagram 4. Do not spill the contents of the tube.  
*If the contents of the tube are spilled, use a new Aptima Multitest Swab Specimen Collection Kit.*
6. Immediately place the swab into the transport tube so that the score line is at the top of the tube as shown in Diagram 5.
7. Carefully break the swab shaft at the score line against the side of the tube as shown in Diagram 6.

### Rectal Swab Specimen Collection



# Chlamydia and Gonorrhea Collection Method Guidance

---

## FAQs

- Who is considered a “clinician”?
  - CMS: Clinicians may be physicians, nurses, pharmacists, or other allied health professionals (CNAs, etc.).
- Will you be validating patient-collected rectal swabs in the future?
  - We plan to but will need to receive IRB approval for study and partner with sites to collect paired clinician- and patient-collected specimens.

# Chlamydia and Gonorrhea Collection Method Guidance

---

## FAQs

- Should I be concerned about results I received from a test performed on a rectal specimen that was patient-collected?
  - There is a risk of false-negative results for patient-collected rectal swab specimens due to inadequate specimen collection by the patient compared to a clinician-collected specimen. We believe this risk to be low after reviewing published literature demonstrating adequate sensitivity of patient-collected specimens compared to clinician-collected. However, IDOH Laboratory has not validated the performance of patient-collected rectal specimens on the Hologic Aptima Combo 2<sup>®</sup> assay and therefore cannot guarantee the accuracy of these results.

# Chlamydia and Gonorrhea Collection Method Guidance

## FAQs

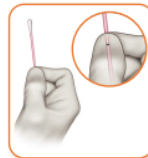
- Is there any training available for clinicians collecting rectal swabs?
  - There is a document providing instructions from the manufacturer: [Clinician Collection Procedure Guide for Rectal Swab Specimens](#)
  - There is a video with step-by-step training: [Clinician-collected Rectal Specimen Collection Guide](#)

### Aptima® Multitest Swab Specimen Collection Kit

Clinician collection procedure guide

For rectal swab specimens

HOLOGIC®



Partially open swab package and remove swab. Do not touch the soft tip or lay the swab down. If the soft tip is touched, laid down, or dropped, discard and get a new Aptima Multitest Swab Specimen Collection Kit. **Hold swab, placing thumb and forefinger in the middle of shaft covering black score line.** Do not hold shaft below score line.



Carefully insert swab into the rectum about 1-2 inches (3-5 cm) past the anal margin (the outside of the anus) and **gently rotate swab clockwise for 5-10 seconds.** Withdraw swab without touching skin.

# Updates to Test Menu

---

Due to low specimen volume and funding restrictions, IDOH Laboratory will no longer be offering:

- Hepatitis B serology as of 6/30/2025
- Hepatitis C nucleic acid amplification testing (NAAT) as of 8/25/25
  - Specimens that meet certain criteria may be sent out for HCV NAAT



# Serology Temperature Guidelines

---

- To ensure specimen integrity and meet manufacturers guidelines, specimen temperatures will be taken upon receipt to the IDOH laboratory.
- Specimens that do not meet temperature requirements, will be cancelled as "*Specimen does not meet transit temperature requirement*".
- Extreme temperatures can be amplified in the back of a UPS/FEDEX/USPS truck, please take climate into consideration when you are shipping.

# Temperatures and Transit Times

Sample Type	Assay	Temperature/transit time requirements
<b>Serology - Serum specimens ONLY</b>		
<b>HIV</b>	HIV Ag/Ab combo	$\leq 7$ days at 15-30°C $\leq 7$ days at 2°-8°C $\leq -20^\circ\text{C}$ for longer
<b>Hep C</b>	Anti- HCV	$\leq 7$ days at 15-30°C $\leq 7$ days at 2°-8°C $\leq -20^\circ\text{C}$ for longer
	HCV RNA	$\leq 24$ hours at 2-30°C $\leq 5$ days at 2°-8°C $-70^\circ\text{C}$ to $-20^\circ\text{C}$ for up to 60 days
<b>Hep B</b>	Anti- HBc (CORE)	$\leq 7$ days at 2°-8°C $\leq -20^\circ\text{C}$ for longer
	Anti-HBc Igm (CORE-IgM)	
	Anti-HBs (AUSAB)	
	HBsAg	$\leq 24$ hours at 15-30°C $\leq 6$ days at 2°-8°C $\leq -20^\circ\text{C}$ for longer
	HBsAg Confirmatory	

Sample Type	Assay	Temperature/transit time requirements
<b>Hep A</b>	HAVAB-M	$\leq 3$ days at 2°-30°C $\leq 7$ days at 2°-8°C $\leq -20^\circ\text{C}$ for longer
<b>Syphilis</b>	RPR/EIA	$\leq 5$ days at 15-30°C $\leq 5$ days at 2°-8°C $\leq -20^\circ\text{C}$ for longer
<b>Mumps (Must be pre-approved by IDOH Epidemiology)</b>	Wampole Mumps IgG ELISA II	$\leq 48$ hours at 2°-8°C $\leq -20^\circ\text{C}$ for longer
<b>Measles (Must be pre-approved by IDOH Epidemiology)</b>	Measles IgM or IgG	$\leq 2$ days at 2°-8°C $\leq -20^\circ\text{C}$ for longer
<b>WNV, EEE, SLE, etc.</b>	Arbovirus IgM or IgG Indirect Immunofluorescence Antibody	$\leq 5$ days at 2°-8°C $\leq -20^\circ\text{C}$ for longer
	West Nile Virus IgG or IgM ELISA	$\leq 48$ hours at 2°-8°C $\leq -20^\circ\text{C}$ for longer
<b>Chlamydia/Gonorrhea</b>		
<b>CT/GC</b>	CT/GC	4°-30°C

# Shipping Specimens

---

- Recent funding reductions have impacted STAT courier availability.
- As of July 1, most facilities will have returned to using UPS/FEDEX/USPS.
- Please use LIMSNET to order shipping canisters for serum and CTGC specimens when shipping via UPS/FEDEX/USPS.
  - To ensure the safety of those handling packages, and the integrity of specimens, please do NOT ship specimens without appropriate shipping canisters.

# Shipping containers

---

## Serology

shipping canister

HIV/hepatitis/syphilis for SST



## CT/GC

shipping canister

with individual sleeves on each specimen



# Refrigerated shipping

- IDOHL will not be providing Styrofoam shipping containers or ice packs for specimens for serology specimens.
- If you have a specimen that requires refrigeration, you will need to purchase and provide shipping boxes and ice packs.
  - [Insulated Foam Shipping Kit - 8 x 6 x 4 1/4" S-9903 - Uline](#)



- Use two (2) frozen ice packs in the shipping container above that match VWR item 89049-980
- Dimensions: 11.4×10.1×3.8 cm (4½×4×1½")
- Weight: 425 g (15 oz.)



# Transit Times

---

- As many transition back to shipping via UPS/USPS, please be conscious of weekends and timing of specimen arrival at the laboratory.
  - IDOHL is not open on weekends or holidays, and no one is at the lab to receive the specimens.
- The more time the lab has to test the specimen, the better. If a specimen arrives near the end of the transit time, this will narrow the range for handling specimen issues or testing concerns and can impact the ability to conduct testing.
  - If the specimen arrives on the 7<sup>th</sup> day in the afternoon, we may not have enough time to conduct testing before it falls outside of the transit time.
  - If a specimen has ID issues and we are waiting to hear back a response from a submitter it may go past the acceptable transit time and be cancelled.
- Transit times are located on the [IDOHL website](#)

# Questions?

## **Serology Receiving Desk**

317-921-5557

### **Stephanie Sweets**

Serology and CTGC Supervisor

317-921-5535

[ssweets@health.in.gov](mailto:ssweets@health.in.gov)

### **Lauren Franco, PhD**

Clinical Microbiology Division Director

317-233-1610

[lfranco@health.in.gov](mailto:lfranco@health.in.gov)







# Question & Answer Session



**Indiana**  
Department  
of  
**Health**



# Questions?

**IDOH Laboratory**

317-921-5500

[IDOH-lab-info@health.in.gov](mailto:IDOH-lab-info@health.in.gov)



# Next webcast

The next Indiana Laboratory System webcast is scheduled for:

**Date:** Thursday, Aug. 14

**Time:** 10:30 – 11 a.m. EDT





**Indiana**  
**Department**  
**of**  
**Health**



**THANK YOU FOR JOINING  
THE WEBCAST!**

*- IDOH Laboratory Team*