



Indiana
Department
of
Health

REFLECTIONS ON THE COVID-19 PANDEMIC

KRIS BOX, M.D., FACOG

STATE HEALTH COMMISSIONER

INDIANA HEALTHCARE LEADERSHIP
CONFERENCE

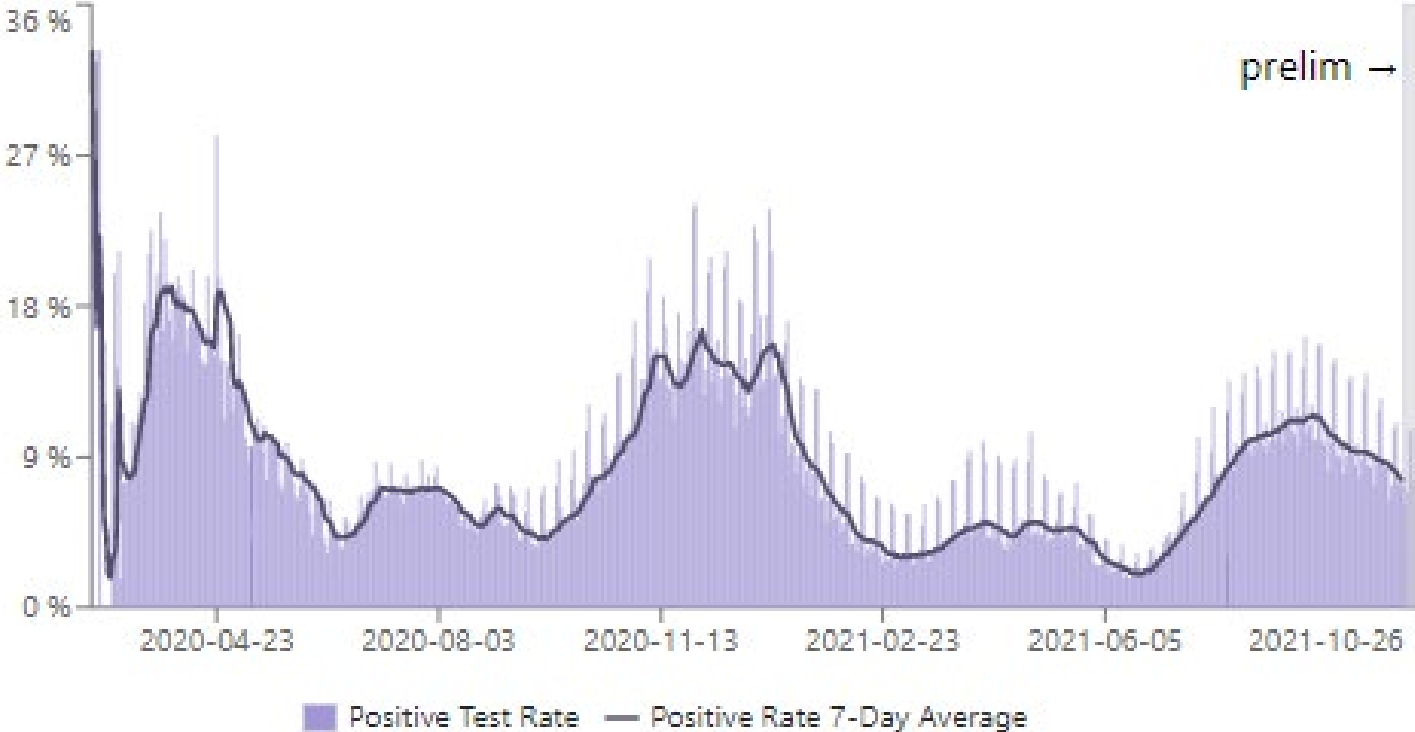
11/2/2021



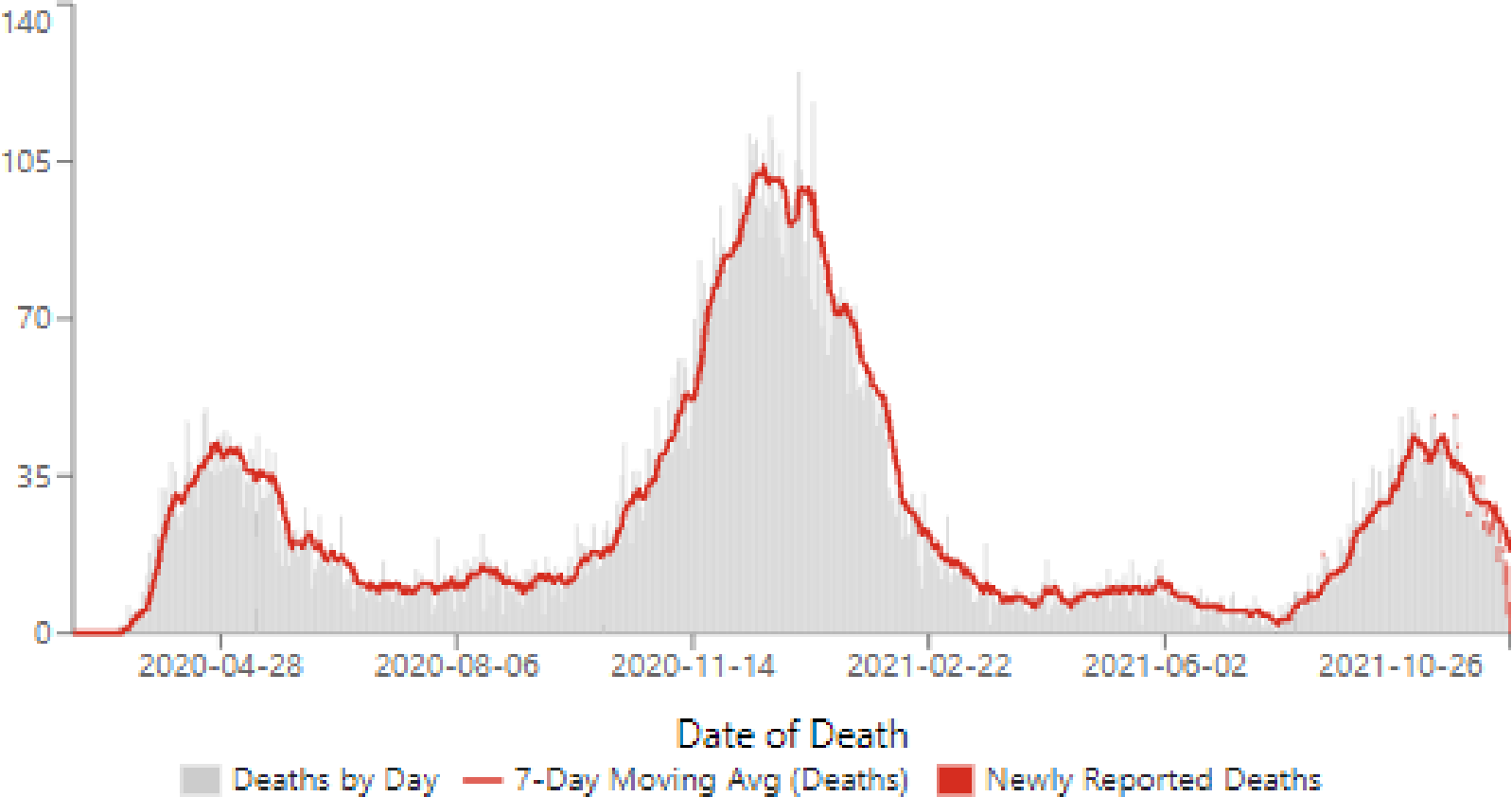
COVID-1: Pivoting

- IDOH surveyors stepped away from their regular duties to support the response and help the healthcare entities that we regulate.
- Surveyors went into long-term care facilities to assist during outbreaks – worked on LTC Strike Teams, helped facilities set up COVID units and cohort residents
- Provided infection control assistance and training, PPE education
- Other surveyors working at the call center, testing sites and drive thru clinics, helping with industrial outbreaks, delivering and picking up test samples
- Surveyors pitched in and did whatever was asked. To see the teamwork across all areas and all departments at IDOH was amazing.
- Hospitals took care of the sickest patients, and our healthcare professionals often stood in for families when patients were dying, holding hands and providing comfort

Indiana COVID-19 cases

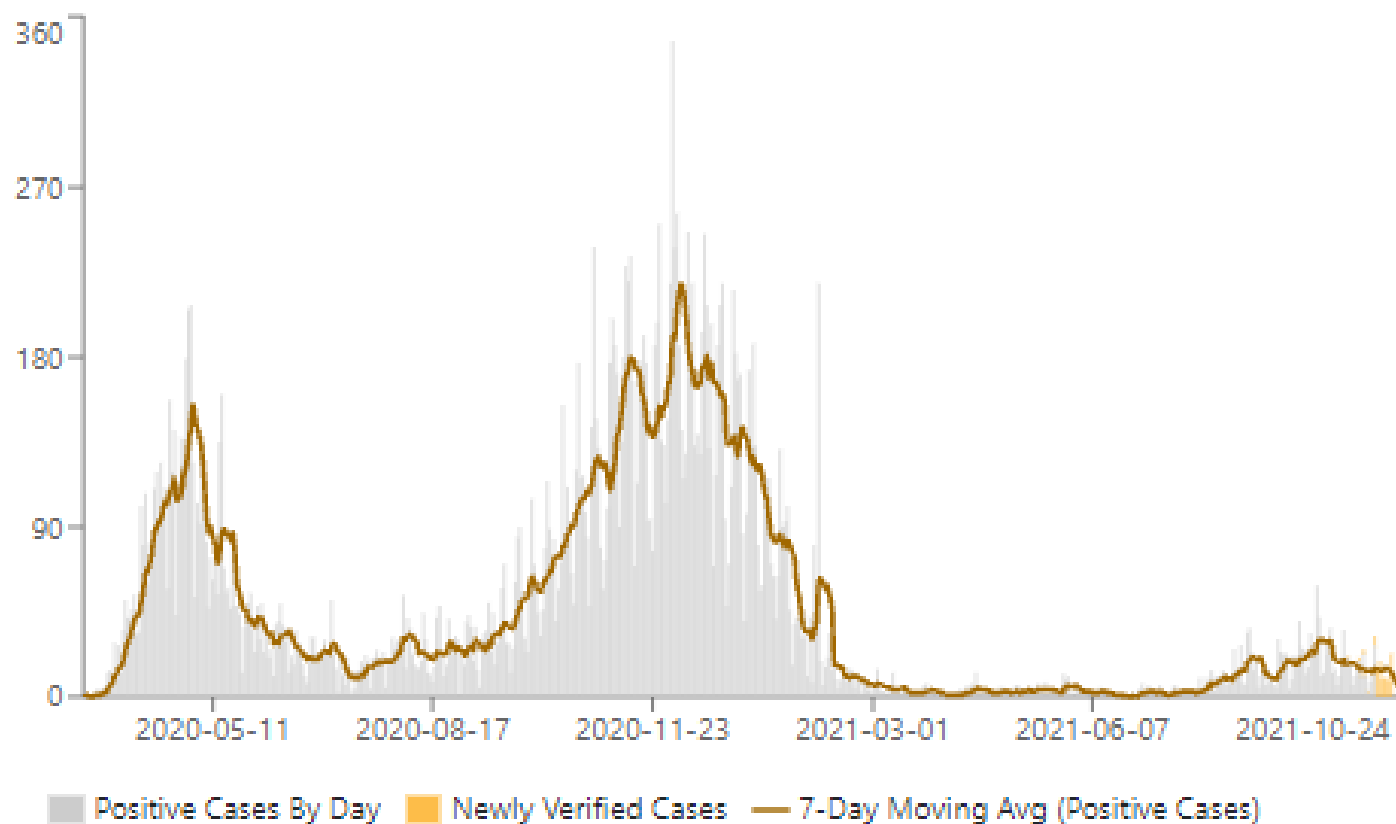


Indiana COVID-19 deaths



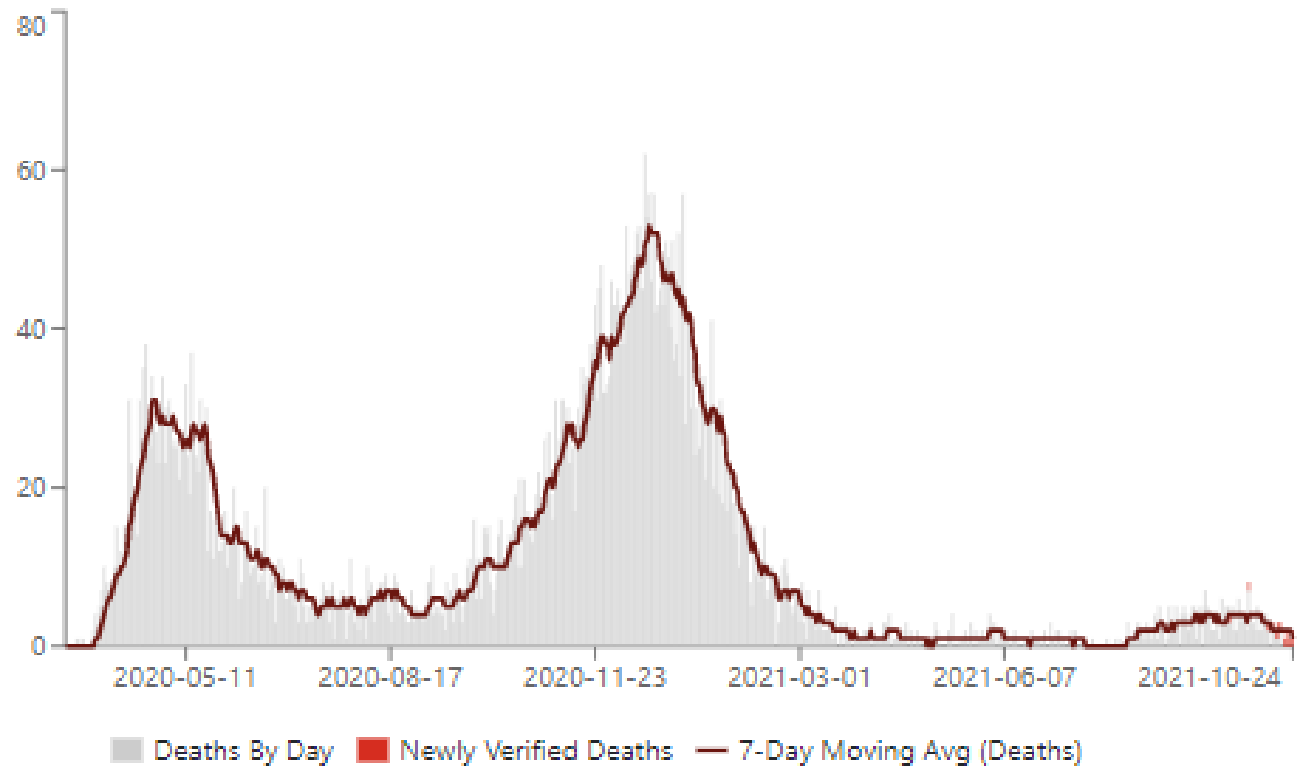
COVID-19 cases in LTC facilities

Statewide Verified Positive Cases by Day



COVID-19 deaths in LTC facilities

Statewide Verified Deaths by Day



COVID-19 vaccines

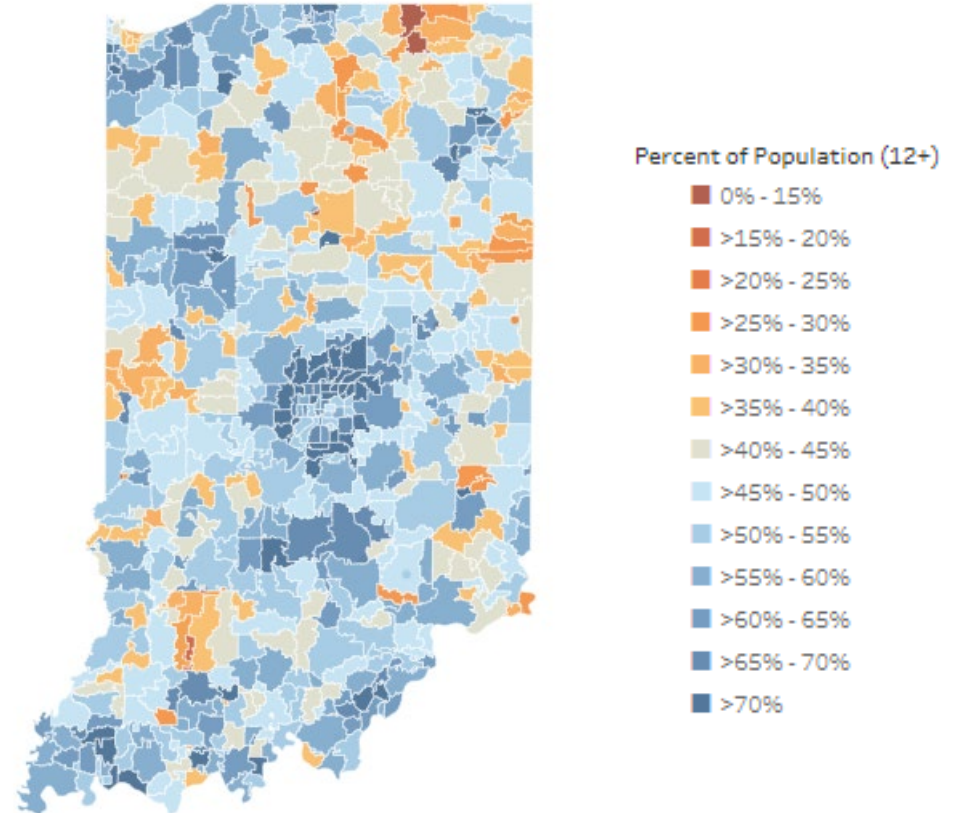
Progress:

- Nearly 3.4 million Hoosiers fully vaccinated (nearly 59% of eligible population)
- More than 7 million doses administered
- Booster doses now approved for all three vaccines in certain populations, including residents of long-term care facilities
- Positivity coming back down/models show downward trend of Delta surge
- Ages 5-11 expected to be approved this week

COVID-19

Ongoing challenges:

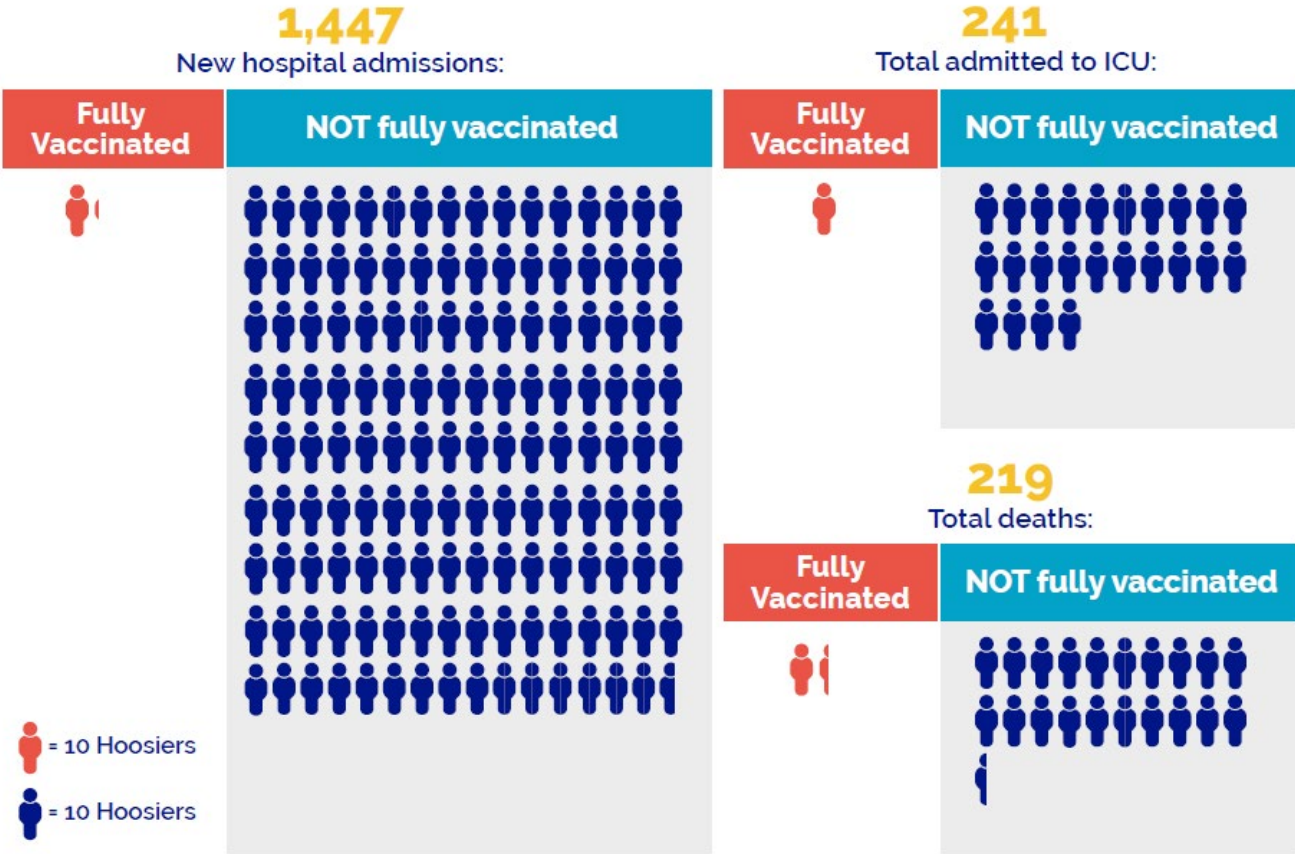
- Still low vaccination uptake in many areas, indicated by red and orange on the map
- Younger age groups in particular remain a concern
- Flu season is here – worried about “twindemic”
- Ongoing stress, negative views aimed at those involved with pandemic response, politicization of the pandemic



Impact of vaccinations

- Each individual in the graphic represents 10 Hoosiers
- The red are fully vaccinated
- The blue are not vaccinated
- These are real data as of 9/30

COVID-19 in Indiana
For the week of Sept. 30, 2021

Long-term care boosters

- Residents in long-term care facilities remain among those most at risk for COVID-19
- Letter going to facilities to make sure they have what they need to administer boosters
- IDOH expects all LTC to offer and administer booster doses by Nov. 30
- Probari will reach out LTC facilities soon to confirm plan for administering booster doses to ensure residents have immediate access to the COVID-19 vaccine booster
- Flyer to promote booster for seniors

Lasting impact

- Frontline healthcare workers and “first responders” (includes IDOH staff working on the response).
- Shared trauma
- Importance of taking care of your mental health
- We need to get back to giving each other grace and treating others with respect and understanding
- Must take the lessons learned and use them to improve the delivery of healthcare, public health in our state so that we are better prepared for the next public health emergency

Governor's Public Health Commission

- Executive Order 21-21 established a 15-member commission to study public health, hear testimony, and make recommendations.
- Dr. Judy Monroe and Sen. Luke Kenley are co-chairs, Congresswoman Susan Brooks serves as citizen advisor, and Dr. Box serves as secretary
- Our mandate is to generate a report by late next summer that:
 1. Analyzes Indiana's current public health system, including strengths and weaknesses;
 2. Makes recommendations to improve the delivery of public health services, address funding challenges, promote health equity, and ensure the sustainability of our local health departments;
 3. Analyzes the performance of state and LHDs during the 2019 Coronavirus Pandemic and make recommendations to ensure Indiana is well positioned for future emergencies; and,
 4. Proposes draft bill language for future legislation to address these recommendations for 2023 sessions.

GPHC Members

Virginia Caine, MD

Director and CMO, Marion County Public Health Department

David J. Welsh, MD, MBA

Ripley County Health Officer

Mindy Waldron, REHS

Allen County Public Health Administrator

Paul K. Halverson, DrPH, FACHE

Founding Dean, Indiana University Fairbanks School of Public Health

Hannah L. Maxey, PhD, MPH, RDH

Associate Professor and Director of Bowen Center for Health Workforce Research & Policy

Brian C. Tabor

President of Indiana Hospital Association

Carl Ellison

President and Chief Executive Officer of Indiana Minority Health Coalition

Cara Veale, DHS, OTR, FACHE

Chief Executive Officer at Indiana Rural Health Association

Kim Irwin, MPH

Administrator of Indiana Public Health Association

Mark Bardsley

Grant County Commissioner

Bob Courtney, CPA

City of Madison Mayor

Dennis Dawes, MHA

Hendricks County Commissioner



Designated Policy Advisors

- The designated policy advisors will do research on assigned topics and bring that back to the Governor's Public Health Commission.
- This may include soliciting feedback from groups of individuals in working sessions.
- The DPAs will report to Shane Hatchett, our chief of staff, who will be the IDOH designated lead for the Commission.

Designated Policy Advisors (cont'd)

The workstreams and advisors are:

- Emergency preparedness (DHS Executive Director Stephen Cox)
- Governance/structure (IDOH Deputy State Health Commissioner Pam Pontones)
- Funding (IDOH Chief of Staff Shane Hatchett)
- Data and information integration (IDOH Chief Medical Officer Dr. Lindsay Weaver)
- Healthcare and public health workforce (Bowen Center)
- Childhood and adolescent health integration (FSSA Chief Medical Officer Dr. Maria Finnell)

Questions?

Click in the upper-right corner of the livestream window to submit your questions.

