



Indiana
Department
of
Health

INDIANA DEAF EDUCATION AND ASSESSMENTS OF LANGUAGE (IDEAL) ANNUAL REPORT (FY25)

CENTER FOR DEAF AND HARD OF
HEARING EDUCATION



*Center for Deaf
and Hard of Hearing
Education*

OUR MISSION:

To Promote positive outcomes for all deaf and hard of hearing children through information, services and education.

OUR VISION:

Deaf and hard of hearing children will have the resources and support to reach their full potential.



IDEAL- code and resources

IC-20-35-12

IDEAL Overview Flyer

Tools & Assessment List

Assessment Reporting Portal

Assessment Portal How-To; Tips

Technical Assistance Flyers &

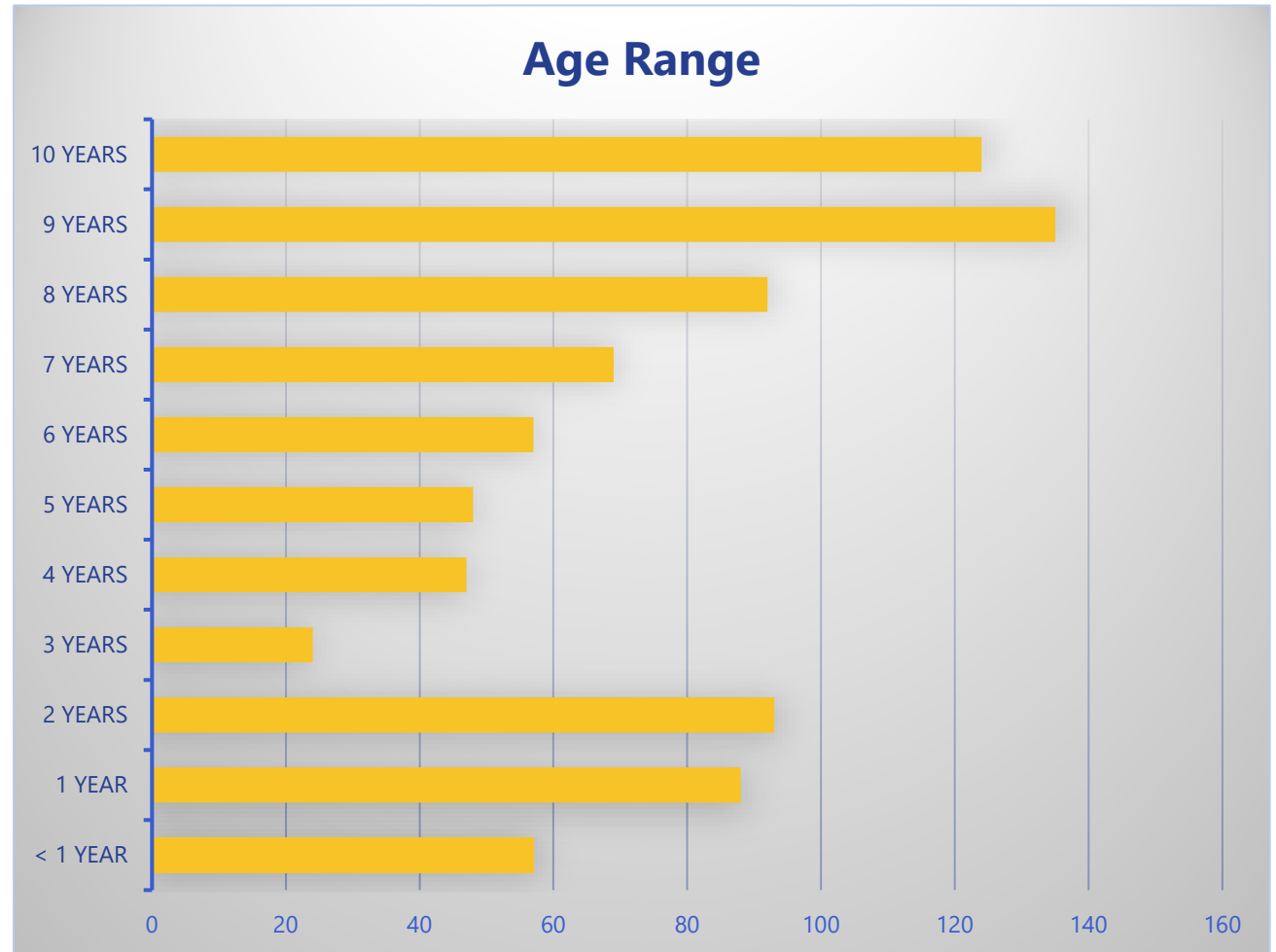
Videos

Parent Document

The word "IDEAL" in a stylized, multi-colored font. Each letter is a different color: I (orange), D (blue), E (purple), A (red), and L (green). Above the letter 'A' is a small, multi-colored star logo.

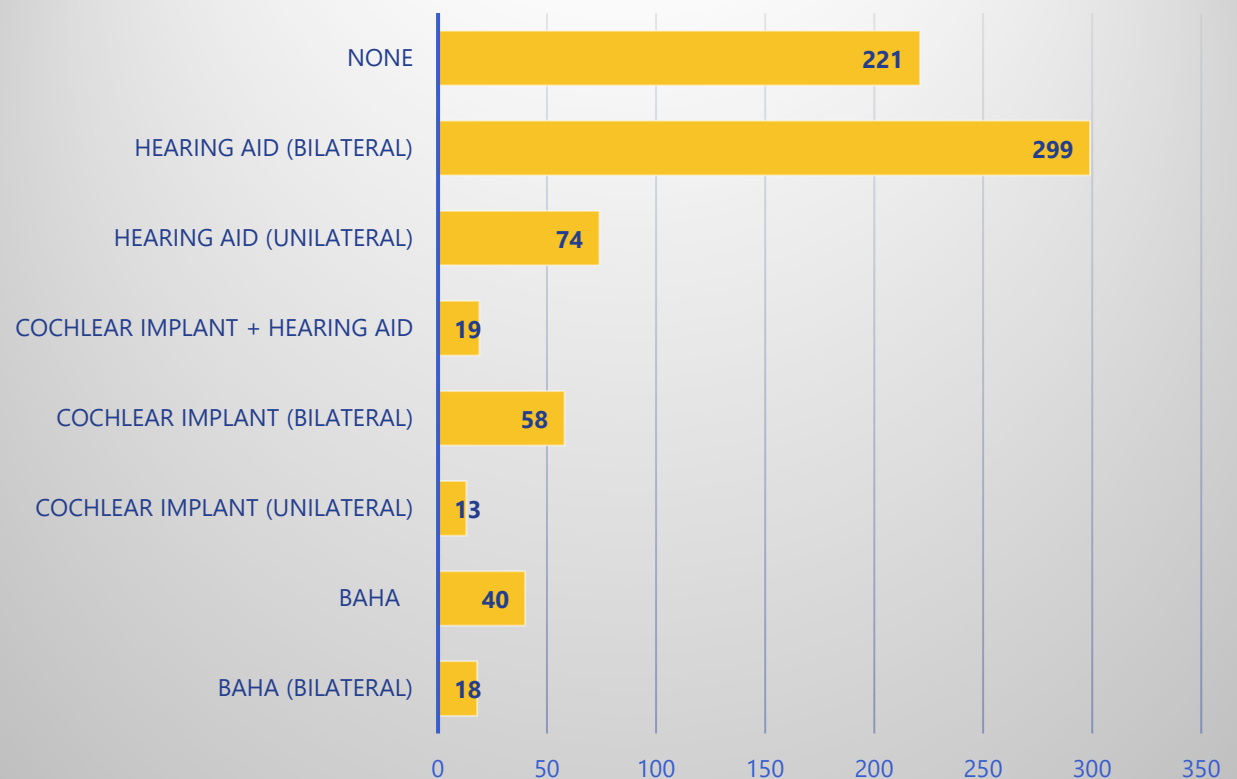
Overall demographics

- Total data points: 769
- Age range: 1 months to 10 yrs, 11 months
- Sex: male - 236, female - 181 (not provided: 352)
- Data of children in 64 school districts, nine First Steps clusters (not provided: 352)
- Programming: IFSP - 226, IEP - 436, 504 Plan - 11, none - 22 (not provided: 141)

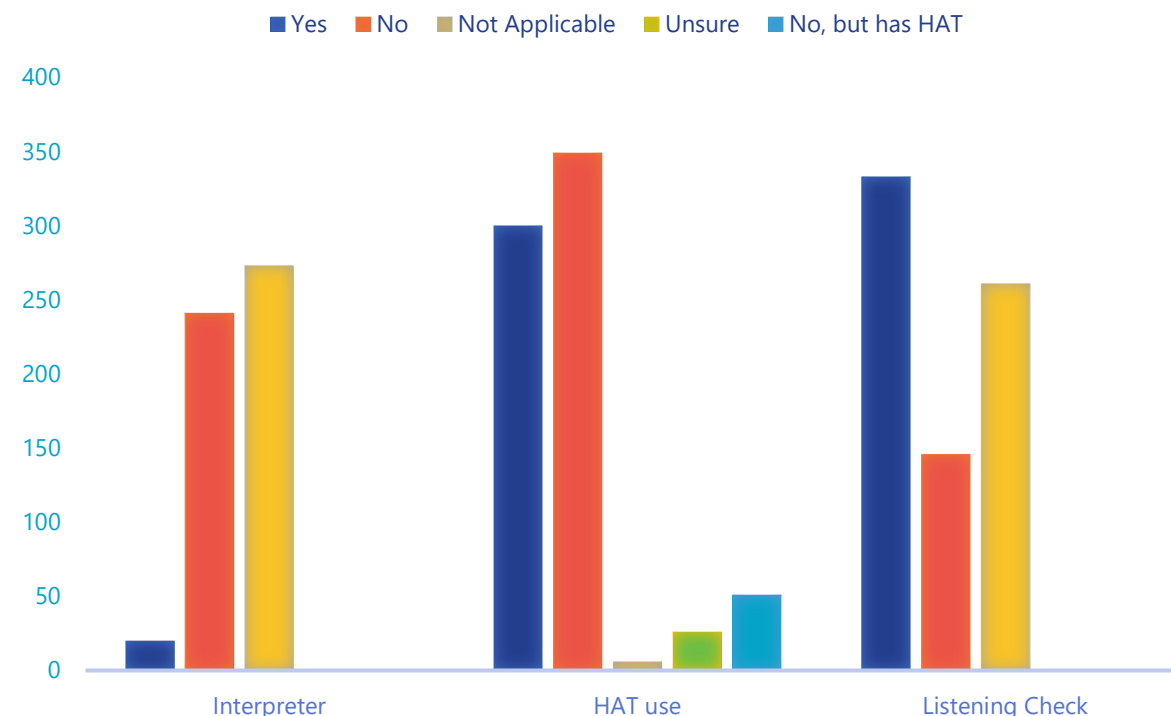


Overall demographics

Amplification Used by Students

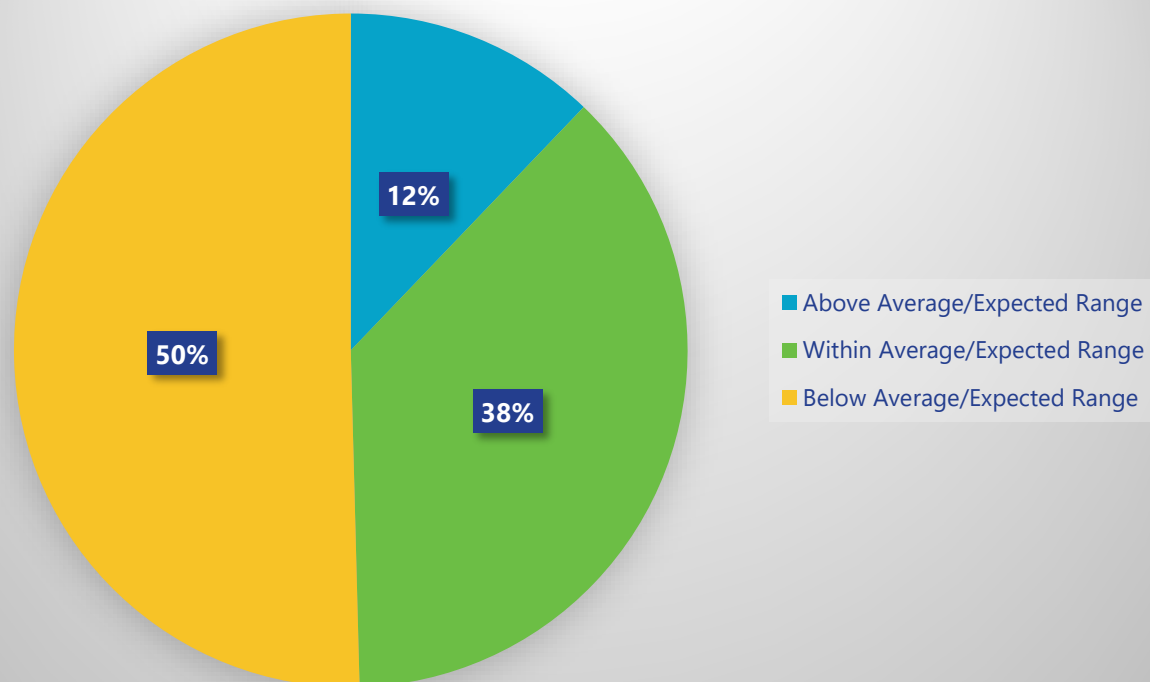


ACCOMMODATIONS USED BY STUDENTS



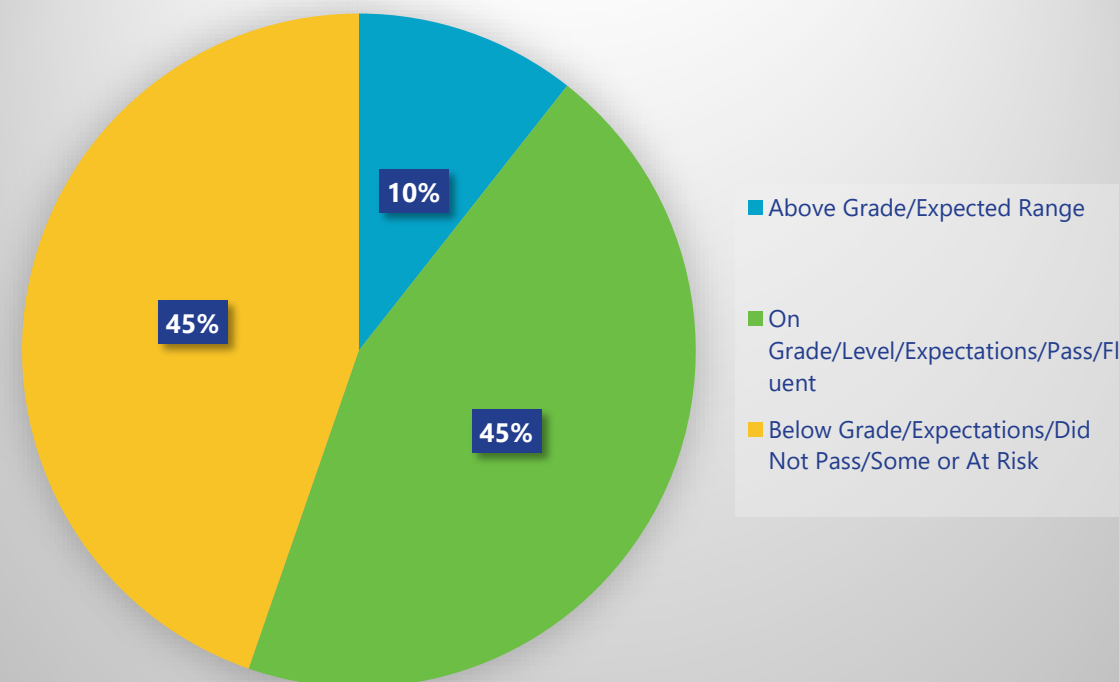
Overall assessment results

Language Assessment Results



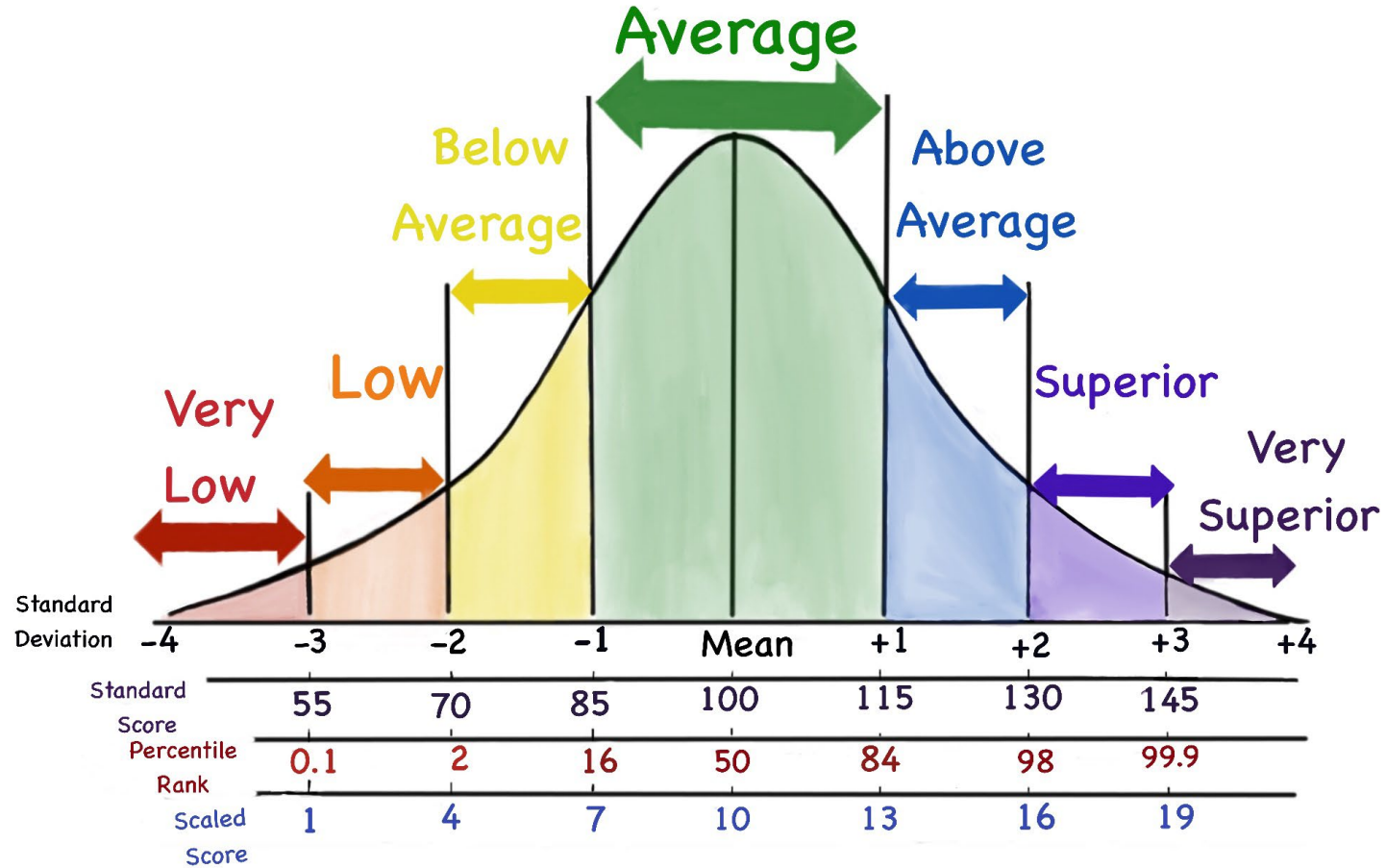
***Based on 839 data points of core/composite/overall language scores on the following measures: AEPS (Communication), CASL, CELF-5, CELF-5 Meta, CELF-P3, CCC-2, DAYC2, EFCU, ILEARN, ISPROUT, LDS, LUI, OWLS-II, PLS-5, TACL-4, TEXTL, TOLDP-4, VCSL, WIDA) See [IDEAL List of Tools and Assessments](#) for more information on included measures

Literacy Assessment Results



***Based on 537 data points of reading/writing/English Language Arts scores on the following measures: DIBELS, F&P, IAM, ILEARN, IREAD, ISPROUT, NWEA-MAP, Star, WIDA) See [IDEAL List of Tools and Assessments](#) for more information on included measures

Reference for score ranges



Reference for score ranges

Scaled Score	Three-Category Descriptors	Five-Category Descriptors	Standard Scores
16-19	Above Average	Superior	≥ 130
13-15		Above Average	115-129
8-12	Average	Average	86-114
5-7	Below Average	Below Average	71-85
1-4		Far Below Average	≤ 70



*Center for **Deaf**
and **Hard of Hearing**
Education*

CONTACT:

Center for Deaf and Hard of Hearing Education

cdhhe@health.in.gov

www.in.gov/health/cdhhe/ideal/

