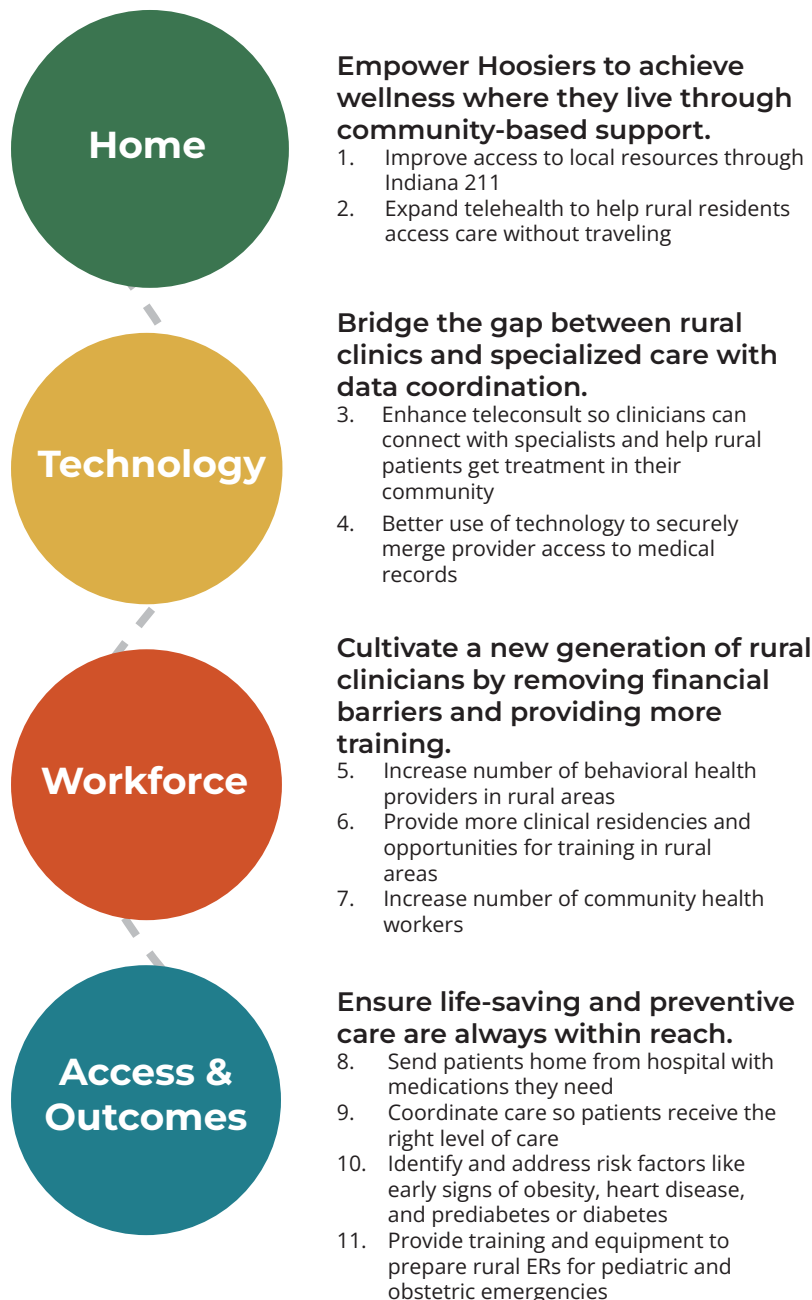




On Dec. 29, CMS awarded Indiana a grant of nearly **\$207 million** for the first year of the five-year Rural Health Transformation Program (RHTP) to address health outcomes in the state's rural communities.

11 Statewide Initiatives Overview



1 out of 5

Hoosiers live
in a rural county

Goals



Make rural America Healthy again



Improve the rural health workforce



Provide sustainable access

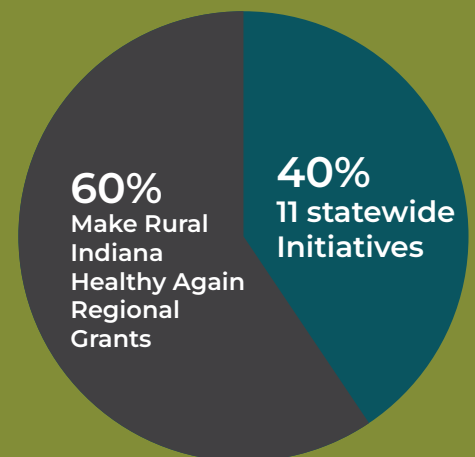


Implement new ways to provide care



Leverage technology

Funding Distribution



Explore GROW



growruralhealth@health.in.gov



www.growruralhealth.in.gov



Indiana
Department
of
Health



Indiana Family
and Social Services
Administration

12. Regional Grants

The Make Rural Indiana Healthy Again initiative brings the federal RHTP program to the state level.

- Indiana understands that rural communities know their own needs best and are well-positioned to create effective local solutions.
- The state has a strong track record of helping communities use data to identify their biggest opportunities and leverage local resources and partnerships to address them.

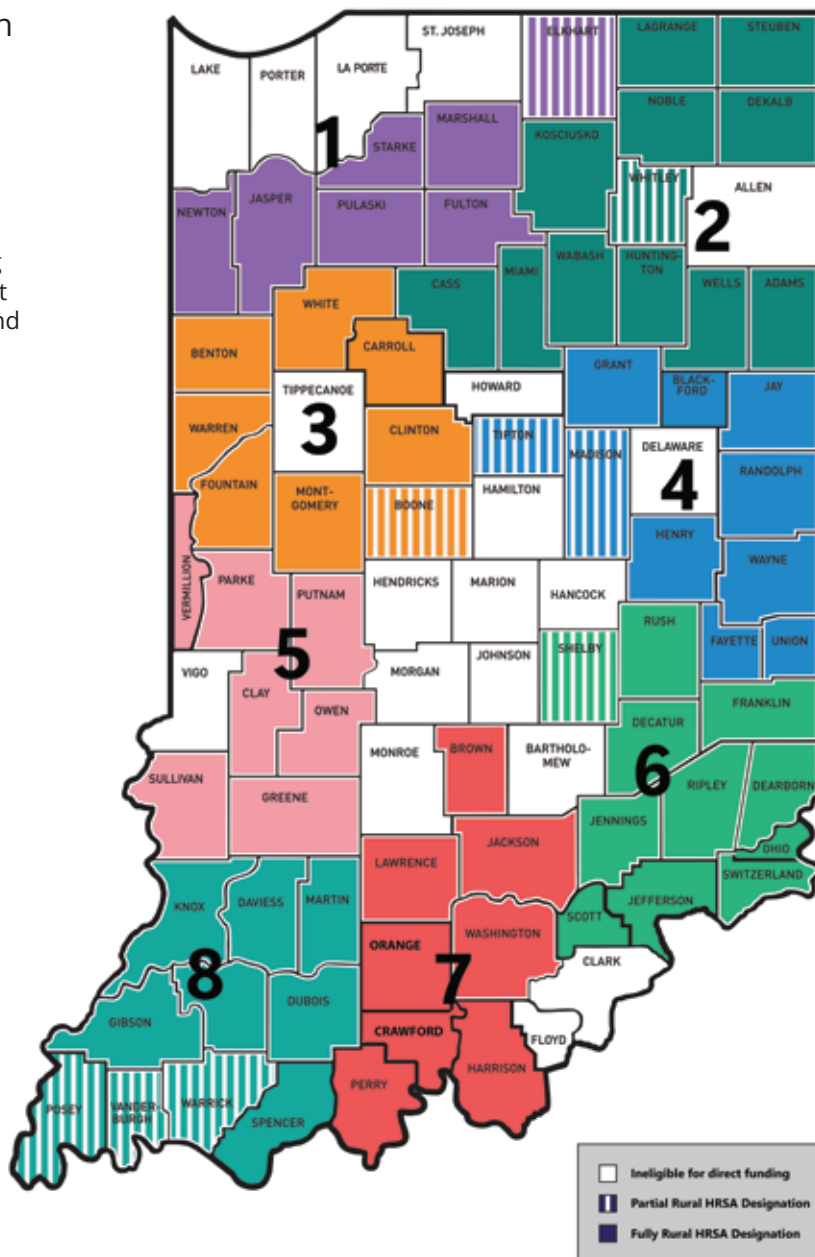
Goals:

- Increased access to prenatal care
- Increased access to chronic disease prevention programs
- Increased access to oral health providers
- Improved patient quality and safety
- Improved community health worker workforce expansion and interoperability
- Improved transportation access
- Increased telehealth and community paramedicine utilization to reduce preventable ED visits
- Increased regional collaboration
- Improved sustainability

Regional Committees

Regional oversight committees will consist of stakeholders within the individual region and have 11 regional members, approved by the State Executive Oversight body. Each Committee must include:

- 1 Member of the Indiana General Assembly
- 1 Provider Representative
- 1 Non-Provider Medical Workers Representative
- 1 Patient Representative
- 1 Pharmacy Representative
- 2 Regional Business Community Representatives
- 2 Community-based Organizations Representatives
- 1 Local Health Department Representative
- 1 Medicaid Managed Care Representative
- 1 Rural Hospital



If you're interested in learning more about GROW,

scan the QR code or visit www.growruralhealth.in.gov.

